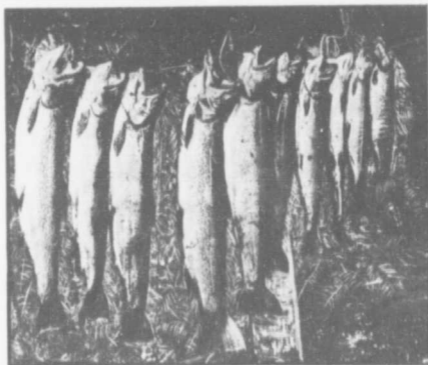
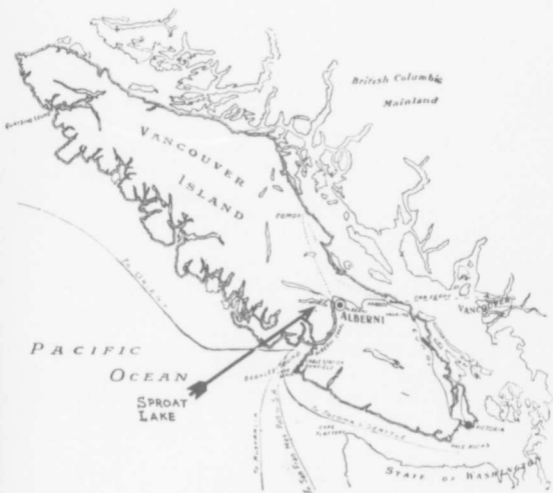


Nwp
971.1Sp
S771
c.2



SPROAT LAKE





Sproat Lake

ALBERNI, V. I.

(Extract from Provincial Government Bulletin (No. 24) on the Alberni District).

"This beautiful lake may well be called the Lucerne of Vancouver Island—it resembles the Swiss lake in many ways.

"The great majority of the lakes in British Columbia occupy depressions or excavations in a single line of valley. This is not the case with Sproat Lake, which branches from a central point, sending out four arms, like a star-fish, occupying four distinct valleys, exactly as does Lake Lucerne; portions of the latter lake are in four cantons, whilst Sproat Lake is partly in Clayoquot and partly in Alberni Districts. The western arms are bounded by rocky and often precipitous shores, rising up to high mountains, on which the snow stays till late in summer. Some of them are purple with heather towards their summits, whilst others are red with the rust of decomposing mineral."

.

"The view of the lake was a scene not readily forgotten. Looking through the trees, this sheet of water appeared as a mirror reflecting the dark hills behind, to which the fleecy morning mists added another element to the charm of the scenery. Then, behind, one could hear the roar of the falls as the lake found outlet in a series of dashing cascades to the Somass River below."

Kleetsa Park

Is situated on the main arm of the lake and faces due south, commanding magnificent views in every direction—eastward the lake winds past Dorothy's Isle to the smaller arms with Mount Arrowsmith forming a rugged background, while to the south and west the snow-capped Mount Kleetsa (from which the park derives its name) and the various unnamed peaks of the interior, present a superb picture, specially in the summer evenings when the setting sun tints not only the hills, but the whole valley, and the reflections on the lake's clear surface duplicate the grandeur of the scene.

Kleetsa Beach

Has been well known for over forty years; it extends almost unbroken for more than a mile and a quarter with the ground sloping gently from the lake to the foot of the mountains behind—a striking contrast to the rest of the main arm on which the shore rises in rocky bluffs from the water's edge.

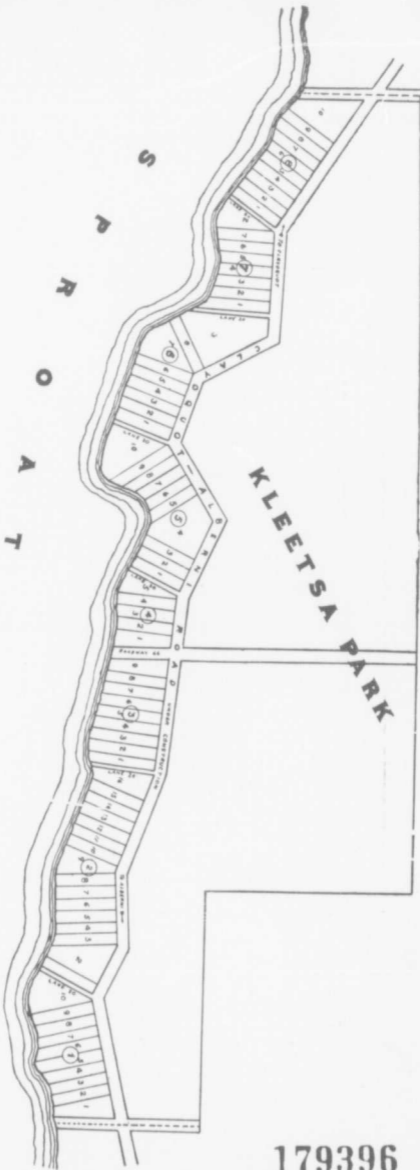
Sport

Sproat Lake and its hinterland have many charms for the sportsman; wild geese and duck frequent its marshes; blue and willow grouse are plentiful; there are great numbers of black tailed deer, whilst wapiti, panther and black bear roam the vast forest recesses to the northwest.

Speckled trout abound in the lake and rivers and many a delightful evening can be spent loading up a basket with shining beauties. There are, of course, stretches which are better than others and a photo of a catch is shown, taken in an hour and a quarter with the fly, the largest fish weighing three pounds, three ounces.

L
A
K
E

S
P
R
O
A
T



179396

Hotels and Residences

A first class hotel and store is being built a short way up the main arm and will be open this season. The proprietor especially pur-

Bathing

It is ideal.

Boating

A daily stage service is being instituted to



poses catering for residents and intends to supply fresh milk, eggs and poultry.

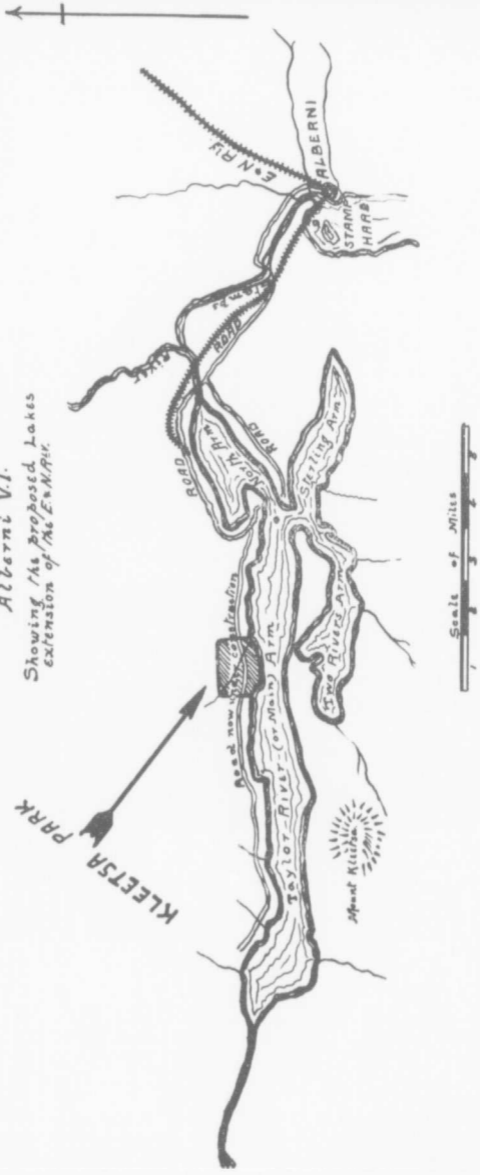
A number of the prominent citizens of Vancouver and Victoria have already purchased property on the shores of the lake and will erect houses this spring.

and from Alberni and Peterboro canoes, boats and launches will be available for hire, thus affording access to every part of the lake. The boating forms a premier attraction and a straight run of some sixteen miles can be made from Stirling Arm to the mouth of Tay-

MAP OF SPROAT LAKE

Alberni V.I.

Showing the proposed Lakes
extension of the E & N Riv.



Scale of Miles
1 2 3

"The Lucerne of British Columbia"

lor river; the prevailing breeze in the morning being from the east, dropping to a calm at midday and veering round to the west towards sunset.

Autos

The trunk road from Nanaimo to Alberni offers a fine run for autos and a view of the giant timbers to the west of Cameron Lake will well repay the ride. The road winds through a narrow valley thickly planted with firs eight and twelve feet in diameter. These charmingly symmetrical trees, in their efforts to get to the light, have pushed their crowns



often 300 feet high. This road is being specially adapted for motor traffic as a continuation of the new road from Victoria to Nanaimo via Saanich Arm, and though it is only open at present as far as the Sproat Lake Hotel for vehicular traffic, the extension along the main arm to Taylor river is in active construction and now forms a good bridle path as far as Kleetsa Park.

There are over 500 miles of motor roads on Vancouver Island; all can be reached from Sproat Lake. Where else in British Columbia can you find such a mileage accessible for motoring?

"The Lucerne of British Columbia"

The Esquimalt and Nanaimo Railway Company has surveyed a branch line to the lake, which, when completed, will bring it within five hours of Vancouver or Victoria.

Alberni can also be reached by the weekly steamer from Victoria, a most delightful run of about sixteen hours up the West Coast.

An album of views of the Lake and District can be seen at the office of

H. W. WINDLE

**4 MACKECHNIE BLOCK, 532 GRANVILLE STREET
VANCOUVER, B.C.**

from whom full information regarding prices, etc., can be obtained.

Extract from "Victoria Daily Times," Friday, January 21st, 1910:

Mr. Marpole announced that all the land fronting on Sproat Lake has been bought up by people in Vancouver and Victoria, who purpose erecting summer cottages.

He said that it was by the merest chance that he himself had been enabled to get a site for a summer home.

On learning that he had better hurry before all the land was taken up, he looked into the matter and found that only two and a half acres remained, which he immediately secured.

A large number of the leading people of Vancouver are intending to erect cottages there at once. Among these are J. H. Senkler, K. C., and E. P. Davis, K. C.

Mr. Marpole is of the opinion that Sproat Lake will become one of the most popular summer resort points on the Coast.

SATURDAY SUNSET  PRESSES LIMITED