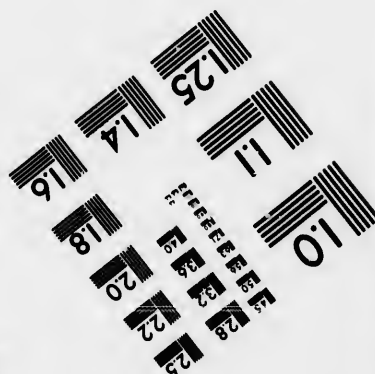
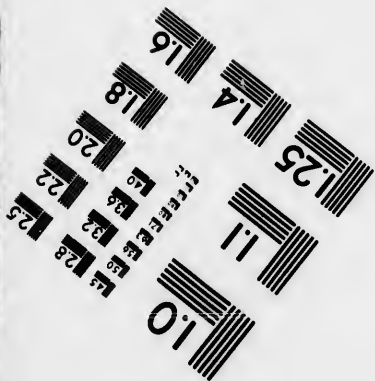
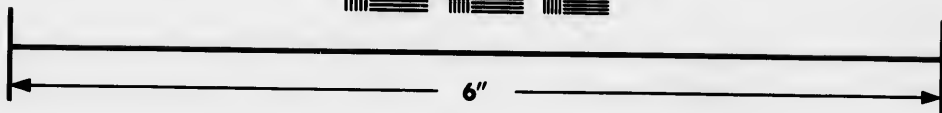
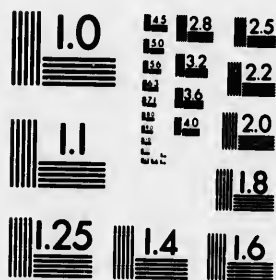


**IMAGE EVALUATION
TEST TARGET (MT-3)**



**Photographic
Sciences
Corporation**

23 WEST MAIN STREET
WEBSTER, N.Y. 14580
(716) 872-4503

**CIHM
Microfiche
Series
(Monographs)**

**ICMH
Collection de
microfiches
(monographies)**



Canadian Institute for Historical Microreproductions / Institut canadien de microreproductions historiques

© 1993

Technical and Bibliographic Notes / Notes techniques et bibliographiques

The Institute has attempted to obtain the best original copy available for filming. Features of this copy which may be bibliographically unique, which may alter any of the images in the reproduction, or which may significantly change the usual method of filming, are checked below.

L'Institut a microfilmé le meilleur exemplaire qu'il lui a été possible de se procurer. Les détails de cet exemplaire qui sont peut-être uniques du point de vue bibliographique, qui peuvent modifier une image reproduite, ou qui peuvent exiger une modification dans la méthode normale de filmage sont indiqués ci-dessous.

Coloured covers/
Couverture de couleur

Coloured pages/
Pages de couleur

Covers damaged/
Couverture endommagée

Pages damaged/
Pages endommagées

Covers restored and/or laminated/
Couverture restaurée et/ou pelliculée

Pages restored and/or laminated/
Pages restaurées et/ou pelliculées

Cover title missing/
Le titre de couverture manque

Pages discoloured, stained or foxed/
Pages décolorées, tachetées ou piquées

Coloured maps/
Cartes géographiques en couleur

Pages detached/
Pages détachées

Coloured ink (i.e. other than blue or black)/
Encre de couleur (i.e. autre que bleue ou noire)

Showthrough/
Transparence

Coloured plates and/or illustrations/
Planches et/ou illustrations en couleur

Quality of print varies/
Qualité inégale de l'impression

Bound with other material/
Relié avec d'autres documents

Continuous pagination/
Pagination continue

Tight binding may cause shadows or distortion along interior margin/
La reliure serrée peut causer de l'ombre ou de la distorsion le long de la marge intérieure

Includes index(es)/
Comprend un (des) index

Title on header taken from:/
Le titre de l'en-tête provient:

Blank leaves added during restoration may appear within the text. Whenever possible, these have been omitted from filming/
Il se peut que certaines pages blanches ajoutées lors d'une restauration apparaissent dans le texte, mais, lorsque cela était possible, ces pages n'ont pas été filmées.

Title page of issue/
Page de titre de la livraison

Caption of issue/
Titre de départ de la livraison

Masthead/
Générique (périodiques) de la livraison

Additional comments:/
Commentaires supplémentaires:

This item is filmed at the reduction ratio checked below/
Ce document est filmé au taux de réduction indiqué ci-dessous.

10X	14X	18X	22X	26X	30X
<input type="checkbox"/>	<input type="checkbox"/>	<input type="checkbox"/>	<input checked="" type="checkbox"/>	<input type="checkbox"/>	<input type="checkbox"/>
12X	16X	20X	24X	28X	32X

The copy filmed here has been reproduced thanks to the generosity of:

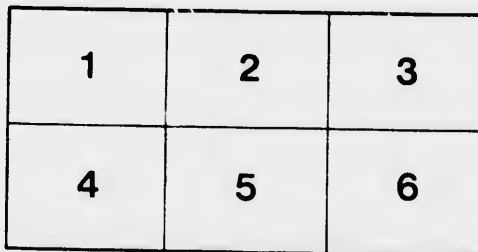
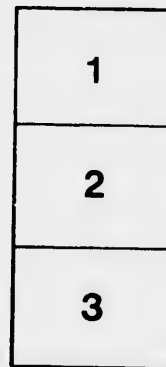
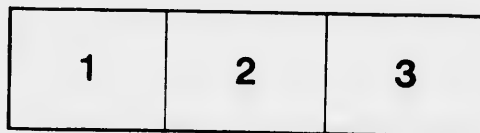
Nova Scotia Public Archives

The images appearing here are the best quality possible considering the condition and legibility of the original copy and in keeping with the filming contract specifications.

Original copies in printed paper covers are filmed beginning with the front cover and ending on the last page with a printed or illustrated impression, or the back cover when appropriate. All other original copies are filmed beginning on the first page with a printed or illustrated impression, and ending on the last page with a printed or illustrated impression.

The last recorded frame on each microfiche shall contain the symbol \rightarrow (meaning "CONTINUED"), or the symbol ∇ (meaning "END"), whichever applies.

Maps, plates, charts, etc., may be filmed at different reduction ratios. Those too large to be entirely included in one exposure are filmed beginning in the upper left hand corner, left to right and top to bottom, as many frames as required. The following diagrams illustrate the method:



L'exemplaire filmé fut reproduit grâce à la générosité de:

Nova Scotia Public Archives

Les images suivantes ont été reproduites avec le plus grand soin, compte tenu de la condition et de la netteté de l'exemplaire filmé, et en conformité avec les conditions du contrat de filmage.

Les exemplaires originaux dont la couverture en papier est imprimée sont filmés en commençant par le premier plat et en terminant soit par la dernière page qui comporte une empreinte d'impression ou d'illustration, soit par le second plat, selon le cas. Tous les autres exemplaires originaux sont filmés en commençant par la première page qui comporte une empreinte d'impression ou d'illustration et en terminant par la dernière page qui comporte une telle empreinte.

Un des symboles suivants apparaîtra sur la dernière image de chaque microfiche, selon le cas: le symbole \rightarrow signifie "A SUIVRE", le symbole ∇ signifie "FIN".

Les cartes, planches, tableaux, etc., peuvent être filmés à des taux de réduction différents. Lorsque le document est trop grand pour être reproduit en un seul cliché, il est filmé à partir de l'angle supérieur gauche, de gauche à droite, et de haut en bas, en prenant le nombre d'images nécessaire. Les diagrammes suivants illustrent la méthode.

qu'il
cet
de vue
je
tion
és



32x



STATEMENTS

Explanatory of the Financial Position of Canada, and a comparison thereof with the position of the other British North American Colonies.

(Issued by the Department of the Minister of Finance, Canada.)

STATEMENT respecting the Funded Debt of Canada, and the Sinking Funds held for its redemption.

	Funded Debt.	Sinking Funds held for its redemption.	Not Funded Debt.
	\$	\$	\$
1861.....	65,626,478	7,453,458	58,173,020
1862.....	67,567,408	7,620,434	59,946,974
1863.....	65,236,649	4,883,177	60,355,472
1864.....	61,624,307	1,536,792	60,287,575

Those figures are from the "Statements of Affairs of the Province," being Table I, in the Public Accounts of each year, signed by Wm. Dickinson, Esq., Deputy Inspector General.

STATEMENT respecting Imports into Canada, and Duty paid thereon, in each year since 1861.

	Imports.	Duty.	Percentage of Duty on Total Imports.
	\$	\$	
1861.....	43,054,336	4,768,193	11.1
1862.....	48,600,633	4,652,749	9.6
1863.....	45,964,493	5,169,173	11.2
1864.....	52,498,066	6,637,603	12.6

The figures relating to the Imports and Duty for 1861, 1862 and 1863 are from the Trade and Navigation Returns, prepared each year under the Superintendence of R. S. M. Bouchette, Esq., Commissioner of Customs and Excise. Those for 1864 are from MSS. tables.

AK
HJ
CIGD

STATEMENT respecting the Population of Canada at the periods under mentioned.

POPULATION BY THE CENSUS OF JANUARY, 1852.

Upper Canada.	Lower Canada.	Total.
952,004	890,261	1,842,265

POPULATION BY THE CENSUS OF JANUARY, 1861.

Upper Canada.	Lower Canada.	Total.
1,396,091	1,111,666	2,507,657

POPULATION, ASSUMING THE SAME RATE OF INCREASE, IN JANUARY OF EACH SUCCEEDING YEAR.

	Upper Canada.	Lower Canada.	Total.
1862	1,456,800	1,137,400	2,593,200
1863	1,520,100	1,167,800	2,687,900
1864	1,586,130	1,196,949	2,783,079
1865	1,655,100	1,226,800	2,881,900

The figures for 1852 and 1861, are from the Official Reports of the Census.

CALCULATION as to the Duty paid *per head* of the population of Canada, during the last four years; also as to the Debt, Ordinary Revenue* and Ordinary Expenditure,* *per head*.

	Duty per head.	Debt per head.	Revenue per head.	Expenditure per head.
	\$ cts.	\$ cts.	\$ cts.	\$ cts.
1861	1 83	22 31	3 35	4 27
1862	1 73	22 30	3 10	4 03
1863	1 85	21 69	3 48	3 75
1864	2 30	20 92	3 79	3 52

* For the amount of the Revenue and Expenditure, see next page.

COMPARATIVE STATEMENT of the entire Payments and Revenues of the Province of
Payments and

P A Y M E N T S .	1861.	1862.	1863.	1864.
	\$	\$	\$	\$
1. Interest on Public Debt, Charges of Management, &c.....	3,962,588	4,021,219	3,995,257	4,126,317
2. Redemption of Public Debt.....	2,738,872	279,831	4,166,375	3,957,740
3. Civil Government, including Pensions.....	471,795	529,093	470,988	473,198
4. Administration of Justice, including Prison Inspection, &c.	849,829	851,479	878,338	840,516
5. Legislation	463,125	432,048	627,378	379,950
6. Education, Grants to Literary Societies & Geological Survey	545,009	567,770	566,380	492,392
7. Hospitals and Charities	272,942	307,637	250,942	299,331
8. Militia and Enrolled Force	84,688	98,445	481,116	317,061
9. Agricultural Societies, Grants to.....	102,620	108,349	105,696	110,019
10. Public Works and Buildings, Rents and Repairs, Roads } and Bridges, Steam and Coast Service..... }	1,799,966	1,389,144	1,247,668	1,393,107
11. Redemption of Seigniorial Rights.....	224,133	379,840	222,668	199,699
12. Advances and Payments to Subsidiary Lines.....	751,689	304,052	89,519	12,290
13. Municipalities Fund	445,314	313,385	142,354	104,119
14. Indian Fund and Indian Annuities.....	136,146	139,439	175,760	168,420
15. Minor Payments	389,075	249,354	260,090	262,621
16. Collection of Revenue.....	1,597,463	1,424,770	1,228,735	1,408,093
Redemption of Public Debt (to be deducted).....	14,742,834	11,395,923	14,909,182	14,644,862
	2,738,872	279,831	4,166,375	3,957,740
Expenditure.....	12,003,962	11,116,092	10,742,507	10,637,142
From this may also be deducted the following exceptional expenditure:—				
Cost of the Ottawa Buildings	655,149	17,739	248,348	458,077
Subsidiary Lines.....	340,306	80,500
Extraordinary Advances.....	364,945	199,012	45,000
Reception of H.R.H. the Prince of Wales.....	63,225
	1,423,319	297,341	296,348	453,077
Leaving as the Total Expenditure, less exceptional items.	10,480,643	10,818,751	10,446,159	10,129,065

This Statement is taken from the Table prefixed to the Public Accounts of 1861, 1862 and 1863, by

Statements relating to the Area, acres surveyed and acres disposed of in the Five Eastern Colonies of British North America, 1863.

	Area in Square Miles.	Acres Surveyed, to Dec. 31st, 1863.	Acres disposed of by Sale or Grant, to Dec. 31st, 1863.
Newfoundland.....	40,200		*100,000
Nova Scotia.....	18,660		*5,748,823
New Brunswick.....	27,163	7,850,000	7,551,909
Prince Edward Island.....	2,100		*1,365,400
Canada.....	331,280	49,084,587	39,331,791
Total.....	410,345		54,097,993

The figures marked with an asterisk (*) are not taken from official sources, but are believed to be approximately correct.

There would thus remain 214,232,317 acres in the hands of the Crown.

Population and its rate of increase.

	Population by the last Census.	Date of that Census.	Rate of annual increase since previous Census—per cent.	Estimated population, January, 1864, assuming the same rate of increase.
Newfoundland*.....	124,288	1857		137,000
Nova Scotia.....	330,857	1861	1.50	349,300
New Brunswick.....	252,047	1861	1.82	272,780
Prince Edward Island.....	80,857	1861	2.60	85,092
Canada.....	2,507,657	1861	2.07	2,788,079
Total.....	3,296,700		2.48	3,628,151

The population is calculated to the end of 1863, (or beginning of 1864,) in order to arrive at a correct estimate of the Debt, Revenue, &c., of the several Provinces per head, for which see next page.

* Including the Labrador Shore.

Revenue, Expenditure, Debt, Imports, Duty and Exports, in 1863.

	Revenue, 1863.	Expenditure, 1863.	Funded Debt, 1863, less Sinking Fund, held for its redemption.	Imports, 1863.		Exports, 1863.
				Total Value.	Total Duty.	
	\$	\$	\$	\$	\$	\$
Newfoundland.....	480,000	479,420	946,000	5,242,724	433,640	5,002,212
Nova Scotia.....	1,185,629	1,072,274	4,858,547	10,201,391	861,989	9,420,968
New Brunswick.....	899,991	864,613	5,702,991	7,764,824	*767,354	8,964,794
Prince Edward Island...	197,384	171,718	240,573	1,428,028	145,372	1,627,540
Canada.....	9,760,316	10,742,807	60,355,472	45,964,493	5,169,173	41,831,532
Total, 1863.....	12,523,320	13,350,832	72,103,583	70,601,480	7,427,528	66,847,036
Canada, 1864.....	10,018,337	10,537,142	60,287,375	52,498,066	6,637,603	38,665,446

*There is also a duty on Exports (Lumber) of \$68,634.

Calculations as to the Revenue, Expenditure, Debt, Imports, &c., per head of the population in each province.

	Population to the square mile.	Revenue per head of the population.	Expenditure per head of the population.	Debt per head of the population.	Imports per head of the population.	Duty per head of the population.	Exports per head of the population.
		\$ cts.	\$ cts.	\$ cts.	\$ cts.	\$ cts.	\$ cts.
Newfoundland.....	3.41	3 50	3 49	6 90	38 27	3 53	43 81
Nova Scotia.....	18.72	3 39	3 10	13 91	29 20	2 46	24 11
New Brunswick.....	10.06	3 29	3 24	20 91	28 46	2 81	32 86
Prince Edward Island.....	40.95	2 29	2 00	2 70	17 61	1 69	18 93
Canada.....	8.40	3 51	3 86	21 69	16 51	1 85	15 03
Average.....	8.32	3 45	3 68	19 83	19 18	2 04	18 42
Canada, 1864.....	8.69	3.79	3.67	20.93	18.23	2.30	13.42

The following calculation shows how the debt at which Canada is to enter the Confederation was arrived at. The figures are somewhat different from those on the balance sheet on page 3, chiefly because a large amount of debt has been paid off by the Sinking Funds, and from changes incident to the transactions of the year 1864.

THE AUDITOR'S STATEMENT OF THE LIABILITIES OF CANADA, IN 1863.

Debtenture Debt, direct and indirect.....	\$65,238,649 21
Miscellaneous liabilities.....	64,426 14
Common School Fund.....	1,181,958 85
Indian Fund.....	1,577,862 46
Banking Accounts.....	3,306,982 81
Seigniorial Tenure:	
Capital to Seigniors.....	\$2,896,711 09
Chargeable on Municipalities' Fund.....	196,719 66
On account of Jesuits' Estates.....	140,271 87
Indemnity to the Townships.....	891,500 00
	4,118,202 62
Less—Sinking Funds.....	75,678,022 09
Cash and Bank Accounts.....	\$4,883,177 11
Common School Fund.....	2,248,691 87
	1,181,958 85
	8,314,027 83
Leaving as Net Liabilities.....	\$87,263,994 26

STATEMENTS

EXPLANATORY OF THE FINANCIAL POSITION OF CANADA, AND A COMPARISON THEREOF WITH THE POSITION OF THE OTHER BRITISH NORTH AMERICAN COLONIES.

*Issued by the Department of the Minister of Finance,
Canada.*

Hurter, Ross & Co., Printers.

File-Tex
Single Copy Pamphlet Cover

Grade V

Made in All States

THE UNIVERSITY MICROFILMS COMPANY

ANN ARBOR, MICH. 48106

