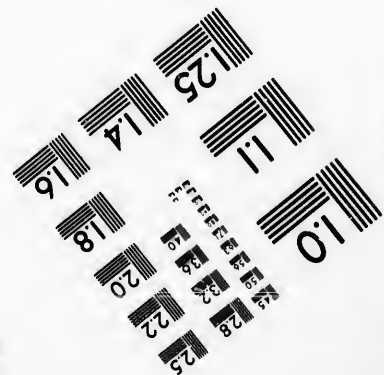
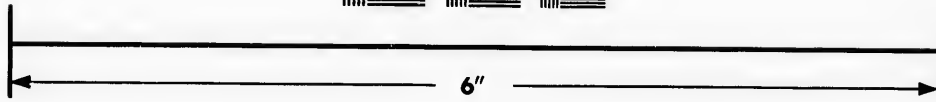
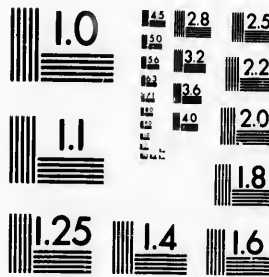


**IMAGE EVALUATION  
TEST TARGET (MT-3)**



**Photographic  
Sciences  
Corporation**

23 WEST MAIN STREET  
WEBSTER, N.Y. 14580  
(716) 872-4503

**CIHM  
Microfiche  
Series  
(Monographs)**

**ICMH  
Collection de  
microfiches  
(monographies)**



Canadian Institute for Historical Microreproductions / Institut canadien de microreproductions historiques

**© 1993**

Technical and Bibliographic Notes / Notes techniques et bibliographiques

The Institute has attempted to obtain the best original copy available for filming. Features of this copy which may be bibliographically unique, which may alter any of the images in the reproduction, or which may significantly change the usual method of filming, are checked below.

L'Institut a microfilmé le meilleur exemplaire qu'il lui a été possible de se procurer. Les détails de cet exemplaire qui sont peut-être uniques du point de vue bibliographique, qui peuvent modifier une image reproduite, ou qui peuvent exiger une modification dans la méthode normale de filmage sont indiqués ci-dessous.

Coloured covers/  
Couverture de couleur

Coloured pages/  
Pages de couleur

Covers damaged/  
Couverture endommagée

Pages damaged/  
Pages endommagées

Covers restored and/or laminated/  
Couverture restaurée et/ou pelliculée

Pages restored and/or laminated/  
Pages restaurées et/ou pelliculées

Cover title missing/  
Le titre de couverture manque

Pages discoloured, stained or foxed/  
Pages décolorées, tachetées ou piquées

Coloured maps/  
Cartes géographiques en couleur

Pages detached/  
Pages détachées

Coloured ink (i.e. other than blue or black)/  
Encre de couleur (i.e. autre que bleue ou noire)

Showthrough/  
Transparence

Coloured plates and/or illustrations/  
Planches et/ou illustrations en couleur

Quality of print varies/  
Qualité inégale de l'impression

Bound with other material/  
Relié avec d'autres documents

Continuous pagination/  
Pagination continue

Tight binding may cause shadows or distortion along interior margin/  
La reliure serrée peut causer de l'ombre ou de la distorsion le long de la marge intérieure

Includes index(es)/  
Comprend un (des) index

Blank leaves added during restoration may appear within the text. Whenever possible, these have been omitted from filming/  
Il se peut que certaines pages blanches ajoutées lors d'une restauration apparaissent dans le texte, mais, lorsque cela était possible, ces pages n'ont pas été filmées.

Title on header taken from: /  
Le titre de l'en-tête provient:

Title page of issue/  
Page de titre de la livraison

Caption of issue/  
Titre de départ de la livraison

Masthead/  
Générique (périodiques) de la livraison

Additional comments: /  
Commentaires supplémentaires:

There are some creases in the middle of the pages. Copy has manuscript annotations.

This item is filmed at the reduction ratio checked below /  
Ce document est filmé au taux de réduction indiqué ci-dessous.

10X	14X	18X	22X	26X	30X
<input type="checkbox"/>	<input type="checkbox"/>	<input type="checkbox"/>	<input checked="" type="checkbox"/>	<input type="checkbox"/>	<input type="checkbox"/>
12X	16X	20X	24X	28X	32X

The copy filmed here has been reproduced thanks to the generosity of:

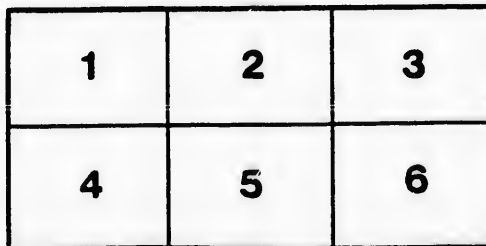
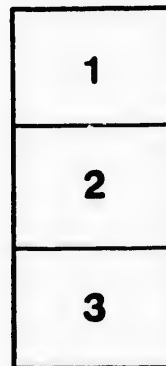
Manuscript Division,  
National Archives of Canada

The images appearing here are the best quality possible considering the condition and legibility of the original copy and in keeping with the filming contract specifications.

Original copies in printed paper covers are filmed beginning with the front cover and ending on the last page with a printed or illustrated impression, or the back cover when appropriate. All other original copies are filmed beginning on the first page with a printed or illustrated impression, and ending on the last page with a printed or illustrated impression.

The last recorded frame on each microfiche shall contain the symbol  $\rightarrow$  (meaning "CONTINUED"), or the symbol  $\nabla$  (meaning "END"), whichever applies.

Maps, plates, charts, etc., may be filmed at different reduction ratios. Those too large to be entirely included in one exposure are filmed beginning in the upper left hand corner, left to right and top to bottom, as many frames as required. The following diagrams illustrate the method:



L'exemplaire filmé fut reproduit grâce à la générosité de:

Division des manuscrits,  
Archives nationales du Canada

Les images suivantes ont été reproduites avec le plus grand soin, compte tenu de la condition et de la netteté de l'exemplaire filmé, et en conformité avec les conditions du contrat de filmage.

Les exemplaires originaux dont la couverture en papier est imprimée sont filmés en commençant par le premier plat et en terminant soit par la dernière page qui comporte une empreinte d'impression ou d'illustration, soit par le second plat, selon le cas. Tous les autres exemplaires originaux sont filmés en commençant par la première page qui comporte une empreinte d'impression ou d'illustration et en terminant par la dernière page qui comporte une telle empreinte.

Un des symboles suivants apparaîtra sur la dernière image de chaque microfiche, selon le cas: le symbole  $\rightarrow$  signifie "A SUIVRE", le symbole  $\nabla$  signifie "FIN".

Les cartes, planches, tableaux, etc., peuvent être filmés à des taux de réduction différents. Lorsque le document est trop grand pour être reproduit en un seul cliché, il est filmé à partir de l'angle supérieur gauche, de gauche à droite, et de haut en bas, en prenant le nombre d'images nécessaire. Les diagrammes suivants illustrent la méthode.

qu'il  
cet  
de vue  
ge  
ation  
ués

ript



32x

MONTREAL, April 29th, 1819.

544

I TAKE the earliest opportunity of presenting you with the following extracts from a law of this Province, regulating its intercourse with the United States, and which places the trade on a much more liberal footing.

"II. And be it further enacted by the authority aforesaid, that the following articles or any of them may during the continuance of this Act be freely imported into this Province from the United States of America, by Land or Inland Navigation without payment of any Duty whatsoever; that is to say: Gold and Silver coin or bullion, masts, yards, bowsprits, spars, planks, boards, knees, futtocks or ship timber of any kind, pitch, tar, turpentine, rosin, hemp, and flax, hoops, shingles, clapboards, trees, lath-wood, staves, timber, square and round, and timber of any kind, seeds, wheat, rye, oats, barley, potatoes, Indian corn, beans, peas, rice or grain of any kind, fresh or salted beef or pork, and provision of all descriptions, fresh fish, horses, neat cattle, sheep, hogs, poultry, or other live stock or other live provisions of any kind, pot and pearl ashes, butter, cheese, honey, furs and skins, undressed hides or skins, pig Iron, tallow, flour of wheat, Indian corn, rye, oats, barley or other grain of any kind and wampum, any Law or Ordinance to the contrary in any wise notwithstanding."

"III. And be it further enacted by the authority aforesaid, that from and after the passing of this Act, the importation of the following articles of the manufacture and produce of the United States of America, shall upon payment of the following Duties, or Security therefor, be permitted, that is to say: leather of all descriptions, leaf tobacco, snuff or flour or powder of tobacco, tobacco manufactured in any other way than into snuff or flour or powder of tobacco, spirits of turpentine and hops, and upon all or any of the above last enumerated articles which shall be imported and brought into this Province from the said United States of America there shall be raised, levied, collected and paid, by the person or persons owning or importing the same, the several Rates and Duties following, that is to say, Five Pounds current money of this Province per centum *ad valorem* upon leather, including all hides and skins tanned or otherwise dressed. Two-pence current money aforesaid, upon every pound Avoirdupoise of leaf tobacco, Five-pence, current money aforesaid, upon every pound Avoirdupoise weight of snuff or flour or powder of tobacco, Four-pence, current money aforesaid, upon every pound of Avoirdupoise weight of Tobacco manufactured in any other way than into Snuff or Flour or Powder of Tobacco; one Shilling current money aforesaid, upon every gallon English wine measure of Spirits of Turpentine; two-pence current money aforesaid, upon every pound Avoirdupoise weight of Hops; and after those rates for any greater or less quantity of such articles respectively."

"IV. And be it further enacted by the authority aforesaid, that the importation, by land or by inland navigation, into this Province from the United States of America of Rum, Spirits, Copper Coin, and of all other Goods, Wares and Merchandise, not enumerated as aforesaid, shall be and the same is hereby prohibited, and such articles, if imported into this Province as aforesaid, shall be seized and forfeited."

Household Furniture for families moving, farming utensils and travellers baggage, admitted free—Goods of all descriptions, including furs, peltry and other produce of the country are exported free of duty.

THE navigation of the St. Lawrence is now free from ice both above and below this, and arrivals from sea and the lakes are daily expected.

THE great decline in price in the European market for all the leading articles of export from this country must necessarily be followed by a reduction in the price here—We may however look for pretty brisk sales, at the annexed quotations.

Your Obedient Servt.

JABEZ COLT.

*Montreal Prices Current—April 28th, 1819.*

Ashes Pots,	39s. to 40s. per cwt.	Brandy,	6s. to 9s. per gall.
Pearl,	45s. do	Gin,	6s. to 6s. 6d.
Pork Prime,	18. to 20. D. per bbl.	Skin Tea,	4s. per lb.
Mess,	26. to 28. do	English Iron,	15s. to 17s. per cwt.
Butter,	1s. per lb.	Swedish do	25s. to 27s. 6d. do
Lard,	10d. do	(L.) Steel,	7½d. per lb
Cheese,	6d. do	Tin I C.	60s. to 62s. 6d.
Plour superfine,	40s. to 42. 6d.	Tin X.	65s.
Fine,	35s. to 37s. 6d.	Codfish,	20s. per cwt.
Leaf Tobacco,	6d. to 7d. 6d.	Salmon,	D.14 per bbl.
Oak timber,	1s. 3d. per foot.	Loaf Sugar,	10½d.
Pine,	4d. do	Muscovado,	65s. to 70s.
Staves,	£10 per M.	Salt Rock,	2s. 3d. per minut.
Leather, sde.	1s. 6d. to 1s. 7d.	Liverpool,	1s. 6d. to 1s. 8d.
Jamaica Spirits	5s. 3d. to 5s. 6d. per gall.	Plyster Paris.	35s. to 40s.

*P.S. May 1<sup>st</sup> 1819* By the fast sailing Ship Triton  
*English* in 18 days from Liverpool to Boston we have  
 dated to the 3<sup>rd</sup> April. Markets farther depressed  
 & asked are quoted 41/ a 42/- Flour 38/ a 40/  
 Staves & timbers no sale.

*J. G. M.*

Tristan  
have  
ped  
40/

