

**CIHM  
Microfiche  
Series  
(Monographs)**

**ICMH  
Collection de  
microfiches  
(monographies)**



**Canadian Institute for Historical Microreproductions / Institut canadien de microreproductions historiques**

**© 2000**

## Technical and Bibliographic Notes / Notes techniques et bibliographiques

The Institute has attempted to obtain the best original copy available for filming. Features of this copy which may be bibliographically unique, which may alter any of the images in the reproduction, or which may significantly change the usual method of filming are checked below.

- ☐ Coloured covers / Couverture de couleur
- ☒ Covers damaged / Couverture endommagée
- ☐ Covers restored and/or laminated / Couverture restaurée et/ou pelliculée
- ☐ Cover title missing / Le titre de couverture manque
- ☐ Coloured maps / Cartes géographiques en couleur
- ☒ Coloured ink (i.e. other than blue or black) / Encre de couleur (i.e. autre que bleue ou noire)
- ☐ Coloured plates and/or illustrations / Planches et/ou illustrations en couleur
- ☐ Bound with other material / Relié avec d'autres documents
- ☐ Only edition available / Seule édition disponible
- ☐ Tight binding may cause shadows or distortion along interior margin / La reliure serrée peut causer de l'ombre ou de la distorsion le long de la marge intérieure.
- ☐ Blank leaves added during restorations may appear within the text. Whenever possible, these have been omitted from filming / Il se peut que certaines pages blanches ajoutées lors d'une restauration apparaissent dans le texte, mais, lorsque cela était possible, ces pages n'ont pas été filmées.
- ☐ Additional comments / Commentaires supplémentaires:

L'Institut a microfilmé le meilleur exemplaire qu'il lui a été possible de se procurer. Les détails de cet exemplaire qui sont peut-être uniques du point de vue bibliographique, qui peuvent modifier une image reproduite, ou qui peuvent exiger une modification dans la méthode normale de filmage sont indiqués ci-dessous.

- ☐ Coloured pages / Pages de couleur
- ☒ Pages damaged / Pages endommagées
- ☐ Pages restored and/or laminated / Pages restaurées et/ou pelliculées
- ☒ Pages discoloured, stained or foxed / Pages décolorées, tachetées ou piquées
- ☐ Pages detached / Pages détachées
- ☐ Showthrough / Transparence
- ☒ Quality of print varies / Qualité inégale de l'impression
- ☐ Includes supplementary material / Comprend du matériel supplémentaire
- ☐ Pages wholly or partially obscured by errata slips, tissues, etc., have been refilmed to ensure the best possible image / Les pages totalement ou partiellement obscurcies par un feuillet d'errata, une pelure, etc., ont été filmées à nouveau de façon à obtenir la meilleure image possible.
- ☐ Opposing pages with varying colouration or discolourations are filmed twice to ensure the best possible image / Les pages s'opposant ayant des colorations variables ou des décolorations sont filmées deux fois afin d'obtenir la meilleure image possible.

This item is filmed at the reduction ratio checked below / Ce document est filmé au taux de réduction indiqué ci-dessous.

10x	12x	14x	16x	18x	20x	22x	24x	26x	28x	30x	32x
						<input checked="" type="checkbox"/>					

The copy filmed here has been reproduced thanks to the generosity of:

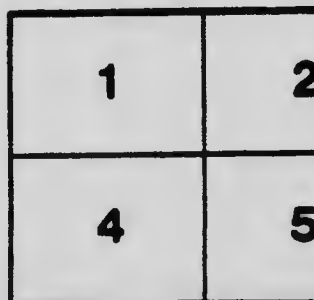
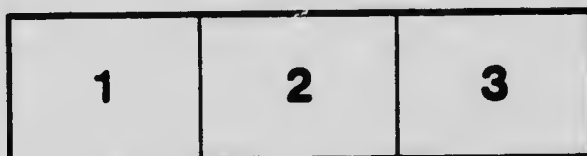
Archives of Ontario  
Toronto

The images appearing here are the best quality possible considering the condition and legibility of the original copy and in keeping with the filming contract specifications.

Original copies in printed paper covers are filmed beginning with the front cover and ending on the last page with a printed or illustrated impression, or the back cover when appropriate. All other original copies are filmed beginning on the first page with a printed or illustrated impression, and ending on the last page with a printed or illustrated impression.

The last recorded frame on each microfiche shall contain the symbol ➡ (meaning "CONTINUED"), or the symbol ▼ (meaning "END"), whichever applies.

Maps, plates, charts, etc., may be filmed at different reduction ratios. Those too large to be entirely included in one exposure are filmed beginning in the upper left hand corner, left to right and top to bottom, as many frames as required. The following diagrams illustrate the method:



L'exemplaire filmé fut reproduit grâce à la  
générosité de:

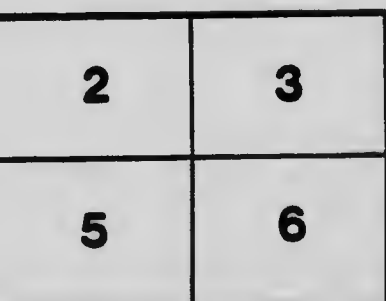
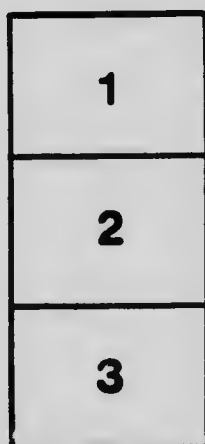
Archives publiques de l'Ontario  
Toronto

Les images suivantes ont été reproduites avec le  
plus grand soin, compte tenu de la condition et  
de la netteté de l'exemplaire filmé, et en  
conformité avec les conditions du contrat de  
filmage.

Les exemplaires originaux dont la couverture en  
papier est imprimée sont filmés en commençant  
par la première page et en terminant soit par la  
dernière page qui comporte une empreinte  
d'impression ou d'illustration, soit par la seconde  
page, selon le cas. Tous les autres exemplaires  
originaux sont filmés en commençant par la  
première page qui comporte une empreinte  
d'impression ou d'illustration et en terminant par  
la dernière page qui comporte une telle  
empreinte.

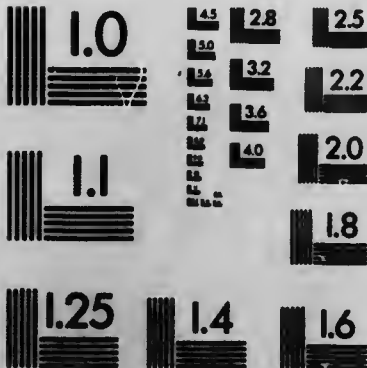
Un des symboles suivants apparaîtra sur la  
dernière image de chaque microfiche, selon le  
cas: le symbole → signifie "A SUIVRE", le  
symbole ▽ signifie "FIN".

Les cartes, planches, tableaux, etc., peuvent être  
filmés à des taux de réduction différents.  
Lorsque le document est trop grand pour être  
reproduit en un seul cliché, il est filmé à partir  
de l'angle supérieur gauche, de gauche à droite,  
et de haut en bas, en prenant le nombre  
d'images nécessaire. Les diagrammes suivants  
illustrent la méthode.



# MICROCOPY RESOLUTION TEST CHART

(ANSI and ISO TEST CHART No. 2)



**APPLIED IMAGE Inc**

1653 East Main Street  
Rochester, New York 14609 USA  
(716) 482-0300 - Phone  
(716) 286-5806 - Fax

# FORT WILLIAM

THE GATEWAY  
OF THE  
GOLDEN WEST

CANADA'S GREAT NATIONAL  
HARBOR ON LAKE  
SUPERIOR



100,000 H.P. with  
178 feet of head

Now supplying Manufacturers with  
Electrical Power



## Reached by

Canadian Pacific Railway  
Grand Trunk Pacific Railway  
Canadian Northern Railway  
Canadian Pacific Steamers  
Northern Navigation Company  
White Line and Booth Line from  
Duluth, etc.

# Rutledge & Jackson, Limited

THE BIG RETAIL STORE FOR

—MEN'S ORDERED CLOTHING—

Men's and Boy's Ready-to-Wear Clothing

Hats, Caps, Furs  
Fine Furnishings

A Complete Stock of Boots and Shoes

A Specialty of Trunks and Valises

Victoria Avenue

FORT WILLIAM



## Robert Strachan JEWELER

C.P.R. Official Time Inspector

DIAMONDS

SOUVENIRS IN LARGE VARIETY

NATIVE SPECIMENS

ARTISTIC NOVELTIES, CUT GLASS, Etc.

Fort William

## MACDONALD & KEYS

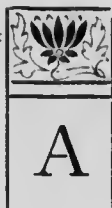
High Class  
Merchant Tailors

BELL WARP SERGES

Direct Importers

Fort William, Ont.

# Fort William



APTLY called the Golden Gateway of the West, located on the Kaministikwia River, a few miles from its mouth, it is the terminal for the Canadian Pacific Line of fine steel steamers that ply between here and Owen Sound— one of the most pleasant trips imaginable.

It is a vital point on the main line of the Canadian Pacific Railway. It will be the Lake Terminal of the Grand Trunk Pacific, and is also on the line of the Canadian Northern Railway.

Fort William is Canada's National Harbor on Lake Superior.

The Kaministikwia is navigable for some miles by the largest vessels now afloat on the Great Lakes, and with the McKellar and Mission branches, affords 26 miles of river frontage.

It was selected in 1878 by the Dominion Government as the best lake terminal for the Transconti-



Port of Fort William

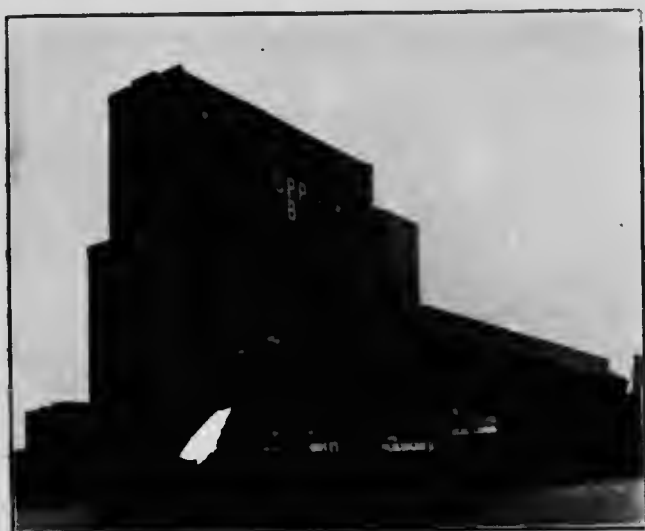


mental Railway, now the Canadian Pacific, and again in 1905 by the Grand Trunk Pacific as its lake terminal.

The river, with its broad, deep stream, affords extraordinary advantages for lake traffic.

At Fort William change is made from Eastern to Central time. Passengers should see that their watches are set accordingly.

From the beauty of situation, accessibility and the opportunities for sport in the neighborhood, Fort William has become a favorite resort for tourists. A long promontory of basaltic rock on the opposite



C.P.R. Elevator B.

side of the bay, called the "Sleeping Giant," whose Indian legend takes one back to aboriginal days, terminates in Thunder Cape, behind which lies the once famous Silver Islet, which has yielded almost fabulous wealth, though now the mines becoming flooded have been abandoned. Pie Island, another mountain of columnar basalt, divides the entrance to the bay, which is flanked on the west by Mackay Mountain, overlooking Fort William. Looking west, between Pie Island and Thunder Cape, Isle Royale (now becoming a popular summer resort) may be seen in the distance.

Fort William was formerly a very important Hudson's Bay Company's post, and was the great

rendezvous of the hunters, voyageurs and chief factors of the Company. The fur house of the old fort is now used as an engine house for the great coal docks ; and some of the largest grain elevators in the world overshadow all.

There are railway workshops and the usual buildings and sidings incident to a divisional point. The Kaministiquia Hotel is a favorite resort for travellers at all seasons. The Kakabeka Falls, where the Kaministiquia leaps from a height rivaling that of Niagara, are but 16 miles from Fort William, and are reached by railway. Below the



Mount McKay

falls, through a narrow gorge, the waters race for half-a-mile to the quieter stretches below. Here not only are a series of views for the tourist, but a power in the future for Fort William.

The available water power is an element in Fort William's future greatness. There will be ready for delivery at once 30,000 horse power from Kakebeka Falls. For upwards of a mile above the falls the river rushes down over a series of rocky declines, forming the Ecarte Rapids. From above the rapids an immense circular flume has been laid at an elevation which adds 40 feet, which with the Falls, 120 feet and the lower rapids below where the turbines are placed, another 20 feet, giving in all a total head

of 180 feet—being but little short of Niagara. The aqueduct is of concrete, strengthened by hoops of steel and bars running across, forming a net work of six inch steel mesh—the flume or aqueduct is 10 feet in diameter, inside measurement.

The reservoir into which it discharges is a solid structure of concrete and steel from which the turbines are fed, the machinery being installed is capable of developing 28,000 horse power, and there is ample reserve for as much more, and probably greater.

The amount of water diverted from the falls will have but little appreciable effect, and will not mar their beauty.

The effect of this development on Fort William will stamp the city as a centre for industries, seeking the rapidly increasing markets of the West.

Raw materials can be delivered cheaply, while the railway haul is short as compared to the East.

There is little doubt that the immense water power, the splendid stretch of navigable water, at all times available, combined with the geographical situation of the city will tend to make it a central point.

The great future of the city seems to be absolutely assured. A new system of water works is being installed, the water being remarkably pure, and is



Forebay of Kaministiquia Power House



Part of Fort Whelan Harb.



C.P.R. Elevator D

drawn from a considerable height, 350 ft. above Fort William, thus giving as well a splendid fire protection system. The class of buildings is exceptionally good. Many of the stores are of a class not generally met with, and the hotel accommodation is good.

Within a short distance are some of the world's famous trout streams—on the north shore of Lake Superior—the best known being the Nipigon, the trout fishing in this and its tributary streams being pronounced the best in the world. The fish caught here are noted for their size, six-pounders being not uncommon.

One hears many stories of large catches; and many remarkable ones have been verified. It is a great pleasure to the sportsman to find that, for once at least, he has found what he has searched for.

The surrounding scenery is grand and of a character rarely equalled. Silver Islet has become a camping ground, many families spending the summer months here. Many other desirable points might be mentioned.

The fact that this is the divisional point on the Canadian Pacific Railway, and that stop-over is allowed, will naturally make this the point from which campers, cottagers and tourists will draw for supplies.

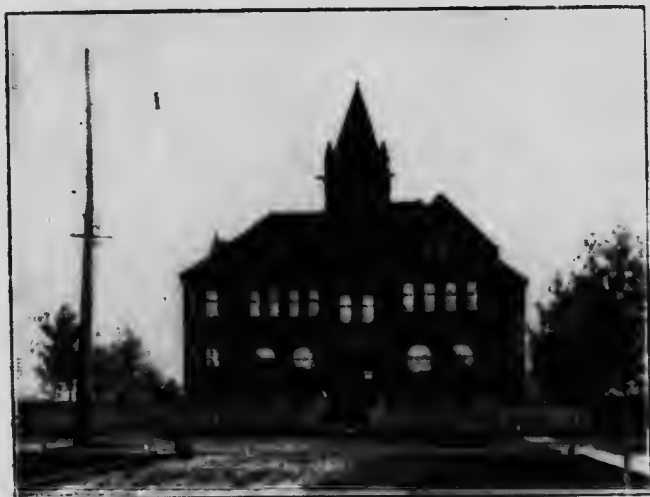
Nearby also are haunts of the big game, the combined attractions bringing thousands of tourists,

including many well-known American and European sportsmen. As the resorts south of this fill up, the surrounding section must become more and more popular every year. The pleasure seeker realizes that in this district he finds just what he wants—a family resort, or rather choice of them, and also good fishing and shooting for himself.

Fort William is the natural source of supply for all who contemplate summering on Thunder Bay, one of Canada's great coming resorts. Of large area, diversified scenery, dotted with picturesque islands and easy of access it cannot fail.

The elevator capacity of the city is enormous and ranks well up to 12,000,000 bushels. There are five large C. P. R. elevators, the Empire and the Ogilvie, and another private Elevator now in course of construction, right on the Kaministiquia. Of the total shipments from Manitoba and the North-West, which was 33,000,000 bushels, Fort William handled 29,000,000, the bulk of which went to Great Britain and Europe. One can hardly realize the extent of this until he sees the elevators, the steamships and the enormous trackage of the railroads.

There is available here in the neighborhood of 100,000 horse-power of water drawn from the immediate vicinity, much of which is now being developed, which affords the present as well as the coming manufacturer a magnificent field of operation.



Central School

Few places combine the advantages of Fort William, which well deserve the closest investigation. There was handled during the season of navigation in 1905 merchandise to the amount of 1,240,505 tons.

Duties collected during same year were \$412,340.00, which places Fort William fourteenth on the list of Canadian Ports of Entry.

The Canadian Pacific, the Grand Trunk Pacific and the Canadian Northern railways all converge at Fort William, and this, combined with the harbor facilities, cheap electric power, and water transpor-



Kaministiquia Power House

tation for all raw materials, has already attracted large manufacturing concerns to locate in Fort William, the latest of which is the Canada Iron and Foundry Company of Montreal, who are establishing large Iron Foundries, Iron Pipe Works, Car Wheel and Car Factories and Coke Ovens, to be followed by Blast Furnaces, where the power from the Kakabeka Falls will be used for electrical smelting.

The Ogilvie Flour Mills Co., have built the most complete milling plant on the Continent. The buildings and machinery are all of the most perfect pattern, the combination forming a model of efficiency and capacity. The elevator has a capacity of 500,000, and the mill, which is a full roller one,



Ogilvie Flour Mills



can turn out 3,000 barrels of flour per day. The water frontage is a little over 1100 feet, 600 of which is wharfage. The power used is electric, and is drawn from the Kakebeka Falls. Due credit should be given to Mr. F. W. Thompson, Vice President and General Manager of the Company, for the perfection of arrangements.

The Railroad and Steamboat connections are :—  
The Canadian Pacific Railway—East and West—Halifax and Eastern points to the Pacific Coast. Connections at Quebec for Liverpool; and at Vancouver for China, Australia, etc. At Fort William with the Canadian Pacific Steamship Line from Owen Sound; The Canadian Northern Ry. from Winnipeg, Brandon, Edmonton, etc.; and making connection at Port Arthur and Fort William with The Northern Navigation Co. from Sarnia and Collingwood, and Grand Trunk Ry. at these points for the east; the White Line of Steamers from Duluth; The Booth Line from Duluth, etc.; the Montreal and Lake Superior Line from Toronto, Montreal, etc., making connection with Ocean Steamers to Liverpool, and in the near future, The Grand Trunk Pacific Railway.

The hotel accommodations are good. In addition to the Kaministiquia already mentioned, the



C.P.R. Steamship



The Empire, Winnipeg

Empire and the Avenue hotels are excellent in every respect.

The Empire Hotel, of Winnipeg, is one of the best to be found north and west of Toronto—modern in every respect—well furnished and equipped with the newest appliances, well managed and noted for its table. This hotel will be found satisfactory to the traveller and the tourist. For further particulars apply to McLaren Bros.

Tourists will be interested in the following notes:

The cuts used in this folder are made from photographs taken by Evans, the proprietor of Evans' Art Studio, one of the show places of Fort William.

Close to the railway station will be found the drug store of M. J. Neville, where souvenirs can be found in large variety, toilet articles, smoker's requisites, stationery, etc.

J. M. & T. Piper are well known Hardware men.

The Banking House of Ray, Street & Co. were the pioneers in this line; their business was established in 1890.



Melville's Store

Macdonald & Keys, cater especially to high-grade, made-to-order clothing.

We show an interior view of G. H. Hyndman's grocery store.



G. H. Hyndman's Store

The progressive character of Fort William's business houses will be thoroughly appreciated. Generally speaking no City in Canada of its size can show a class of stores more in keeping with the general air

of progress that pervades Canada to-day.

## THE BON TON

Headquarters for

**Souvenirs, Jewelry, Fine China, Stationery,  
Fishing Tackle, Confectionery,  
— Fancy and Oriental Goods —**

## CREAM PARLORS

Fort William

Fashionable Goods

Convincing Prices

## "The Hub"

BOLL & CLEMENTS

FINE  
TAILORING  
HATS, CAPS

CLOTHING,  
GENT'S  
FURNISHINGS

Near Montreal Banks

Fort William, Ont.

# "The Dry Goods House"

Always the Best  
of the New Things

DRY GOODS - MILLINERY - DRESSMAKING

## E. C. CURRIE CO.

Victoria Block

Victoria Avenue

ESTABLISHED 1878

### Archie McGillis

The store that has always what you are looking for.



Clothing,  
Hats,  
Furnishings,  
Footwear,  
Trunks & Valises

Port Arthur  
Cumberland St

Fort William  
Strap-n-St

## McLaurin & Dow

Groceries, Provisions, Table Delicacies, Etc.

We are prepared to fill in a  
proper manner orders for  
Campers, Cottagers, Steam-  
boats, Hotels, Etc.

Orders Promptly and Carefully Handled. We are Properly  
Equipped for This Business

## FORT WILLIAM

# W. F. HOGARTH

GROCERIES, PROVISIONS,  
TABLE DELICACIES, ETC.

We are prepared to handle  
this business in a  
proper manner

Supplies for Cottagers,  
Campers, Hotels and  
Steamers

FORT WILLIAM

---

## CORWIN & CO.

Dry Goods      Fancy Goods

---

THE LADIES' HEADQUARTERS

An Extensive Stock of High Grade Goods, Novelties, New Designs. Etc.  
— DIRECT IMPORTATIONS —

Dressmaking  
a Specialty

Fort William

---

## FORT WILLIAM

The great Manufacturing and Distributing  
point for the CANADIAN NORTH-WEST,  
one of the coming Industrial Centres of  
Canada.

Unlimited Water Power and exceptional  
Transportation facilities by Rail and Water.

The place where Fortunes will be made in  
Real Estate transactions.

## YOUNG & LILLIE

REAL ESTATE, INSURANCE & LOAN AGENTS

Have the Choicest Warehouse, Business,  
Residential and Factory Sites for Sale.

Correspondence Solicited. Plans and Particulars furnished on application.

# RAY, STREET & CO.

**Bankers, Brokers, and  
Financial Agents**

**FORT WILLIAM AND PORT ARTHUR**

**Fire and Marine Insurance.**

**Real Estate**

**Do you Want to Advertise**

The Commercial Advan-  
tages of your City

**Do you Want to Advertise**

The Products of your  
Farms

**Do you Want to Advertise**

The Extent of your  
Factories



**IF SO** We can in the course of two  
hours erect our Aerial Cam-  
era and make a 9 x 38 inch photograph,  
which is admitted to be the best Adver-  
tising medium you can use.

For further particulars write—

**The Aerial  
Photograph Co.**

Western Office:  
**Rutledge Evan's Block  
FORT WILLIAM, Ont.**

## **THE ONTARIO BANK**

**Head Office**

**TORONTO**

**Capital Paid Up, \$1,500,000.00    Assets, \$650,000.00**

### **Directors**

George R. R. Cockburn, Esq., President  
Donald Mackay, Esq., Vice-President  
R. D. Perry Esq.    R. Grass, Esq.    Hon. R. Harcourt  
T. Walmsley, Esq.    John Flett, Esq.  
Charles McGill, General Manager    R. B. Caldwell, Inspector

### **Branches**

Alliston	King City	Peterboro (Branch)
Aurora	Kingston	Port Arthur
Bowmanville	Lindsay	Port Hope
Buckingham, Que.	Millbrook, Ont.	Sudbury
Collingwood	Montreal, Que.	Trenton
Cornwall	Mount Forest	Tweed
Fort William	Newmarket	Warsaw, Ont.
Holstein	Ottawa	Waterford
	Peterboro	

### **TORONTO—**

Scott and Wellington Streets    Yonge and Richmond Streets  
Queen and Portland Streets    Yonge and Carlton Streets

**Agents:** New York—Fourth National Bank and the Agents Bank of  
Montreal, Boston—Eliot National Bank. London, Eng.—Parr's  
Bank, Limited. France and Europe—Credit Lyonnais.

**W. J. RAPSEY, Manager Fort William Branch**

# THE MAPLE LEAF STORE

HIGH CLASS GROCERIES.  
FLOUR, FEED, Etc.

G. H. HYNDMAN

May Street,  
Second Door to Post Office.

Fort William, Ont.

E. R. Gavin

FOOTWEAR

*Trunks and Valises*

J. & T. M. PIPER .

HARDWARE

GUNS, AMMUNITION  
and FISHING TACKLE.

POCKET and  
TABLE CUTLERY

FORT WILLIAM, - - ONTARIO

**DIAMONDS**

— WE HAVE THEM FROM \$10.00 TO \$250.00. —

**SOUVENIRS**

Of all kinds in Sterling Silver.

**PROMPTNESS**

is a feature of our business.

Many repairs can be done while you wait and all can be done on short notice.

**MACEACHERN, Jeweler**

Cor. Victoria and Syndicate.

Fort William

## The Fort William Hardware Co.

Heating and  
Plumbing  
A Specialty

Contractors and Builder's Supplies  
Fishing Tackle, Guns, Ammunition  
Etc.

SHELF AND HEAVY HARDWARE, PAINTS  
OILS, GLASS, Etc.

Fort William - - - Ontario

## The T. H. Kelly Co. Wines, Liquors and Cigars Schlitz & Budweiser Beers



Tel. 95

Fort William

## The Electrical Supply Co.

DEALERS  
AND  
CONTRACTORS

■ MOTORS ■

All kinds of INSIDE WIRING for  
Lights, Bells, Annunciators, etc.

We furnish and instal all kinds of  
ELECTRICAL FIXTURES.

Correspondence solicited. Estimates furnished

Office and Store  
MAY STREET

FORT WILLIAM



W. S. JOHNSTON & CO'Y  
Printers  
34 Adelaide St. W., Toronto





