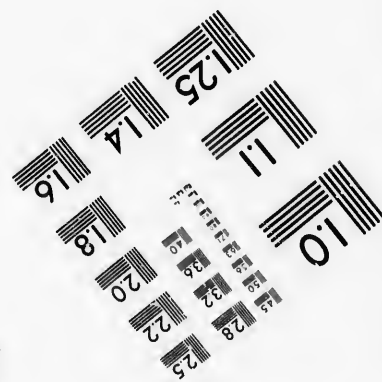
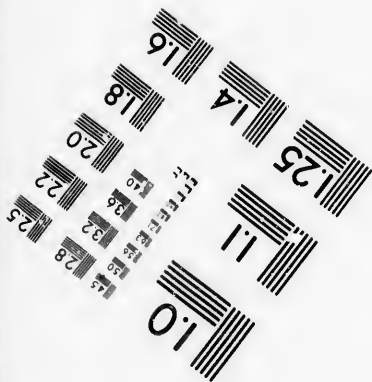
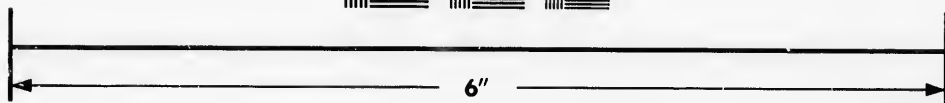
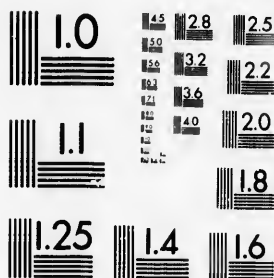


**IMAGE EVALUATION
TEST TARGET (MT-3)**



**Photographic
Sciences
Corporation**

23 WEST MAIN STREET
WEBSTER, N.Y. 14580
(716) 872-4503



**CIHM/ICMH
Microfiche
Series.**

**CIHM/ICMH
Collection de
microfiches.**



Canadian Institute for Historical Microreproductions / Institut canadien de microreproductions historiques



© 1986

Technical and Bibliographic Notes/Notes techniques et bibliographiques

The Institute has attempted to obtain the best original copy available for filming. Features of this copy which may be bibliographically unique, which may alter any of the images in the reproduction, or which may significantly change the usual method of filming, are checked below.

L'institut a microfilmé le meilleur exemplaire qu'il lui a été possible de se procurer. Les détails de cet exemplaire qui sont peut-être uniques du point de vue bibliographique, qui peuvent modifier une image reproduite, ou qui peuvent exiger une modification dans la méthode normale de filmage sont indiqués ci-dessous.

- | | |
|--|--|
| <input type="checkbox"/> Coloured covers/
Couverture de couleur | <input type="checkbox"/> Coloured pages/
Pages de couleur |
| <input type="checkbox"/> Covers damaged/
Couverture endommagée | <input type="checkbox"/> Pages damaged/
Pages endommagées |
| <input type="checkbox"/> Covers restored and/or laminated/
Couverture restaurée et/ou pelliculée | <input type="checkbox"/> Pages restored and/or laminated/
Pages restaurées et/ou pelliculées |
| <input type="checkbox"/> Cover title missing/
Le titre de couverture manque | <input type="checkbox"/> Pages discoloured, stained or foxed/
Pages décolorées, tachetées ou piquées |
| <input type="checkbox"/> Coloured maps/
Cartes géographiques en couleur | <input type="checkbox"/> Pages detached/
Pages détachées |
| <input type="checkbox"/> Coloured ink (i.e. other than blue or black)/
Encre de couleur (i.e. autre que bleue ou noire) | <input type="checkbox"/> Showthrough/
Transparence |
| <input type="checkbox"/> Coloured plates and/or illustrations/
Planches et/ou illustrations en couleur | <input type="checkbox"/> Quality of print varies/
Qualité inégale de l'impression |
| <input type="checkbox"/> Bound with other material/
Relié avec d'autres documents | <input type="checkbox"/> Includes supplementary material/
Comprend du matériel supplémentaire |
| <input type="checkbox"/> Tight binding may cause shadows or distortion
along interior margin/
La reliure serrée peut causer de l'ombre ou de la
distorsion le long de la marge intérieure | <input type="checkbox"/> Only edition available/
Seule édition disponible |
| <input type="checkbox"/> Blank leaves added during restoration may
appear within the text. Whenever possible, these
have been omitted from filming/
Il se peut que certaines pages blanches ajoutées
lors d'une restauration apparaissent dans le texte,
mais, lorsque cela était possible, ces pages n'ont
pas été filmées. | <input type="checkbox"/> Pages wholly or partially obscured by errata
slips, tissues, etc., have been refilmed to
ensure the best possible image/
Les pages totalement ou partiellement
obscurcies par un feuillet d'errata, une pelure,
etc., ont été filmées à nouveau de façon à
obtenir la meilleure image possible. |
| <input checked="" type="checkbox"/> Additional comments: /
Commentaires supplémentaires: | [Printed ephemera] 1 sheet (verso blank) |

This item is filmed at the reduction ratio checked below/
Ce document est filmé au taux de réduction indiqué ci-dessous.

10X	14X	18X	22X	26X	30X
<input type="checkbox"/>	<input type="checkbox"/>	<input type="checkbox"/>	<input type="checkbox"/>	<input checked="" type="checkbox"/>	<input type="checkbox"/>
12X	16X	20X	24X	28X	32X

The copy filmed here has been reproduced thanks to the generosity of:

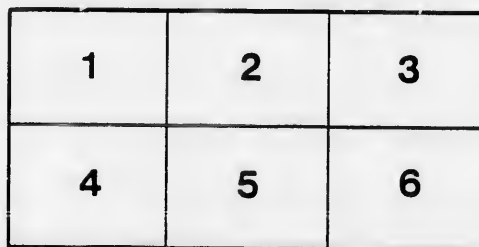
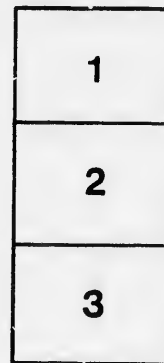
D. B. Weldon Library
University of Western Ontario
(Regional History Room)

The images appearing here are the best quality possible considering the condition and legibility of the original copy and in keeping with the filming contract specifications.

Original copies in printed paper covers are filmed beginning with the front cover and ending on the last page with a printed or illustrated impression, or the back cover when appropriate. All other original copies are filmed beginning on the first page with a printed or illustrated impression, and ending on the last page with a printed or illustrated impression.

The last recorded frame on each microfiche shall contain the symbol \rightarrow (meaning "CONTINUED"), or the symbol ∇ (meaning "END"), whichever applies.

Maps, plates, charts, etc., may be filmed at different reduction ratios. Those too large to be entirely included in one exposure are filmed beginning in the upper left hand corner, left to right and top to bottom, as many frames as required. The following diagrams illustrate the method:



L'exemplaire filmé fut reproduit grâce à la générosité de:

D. B. Weldon Library
University of Western Ontario
(Regional History Room)

Les images suivantes ont été reproduites avec le plus grand soin, compte tenu de la condition et de la netteté de l'exemplaire filmé, et en conformité avec les conditions du contrat de filmage.

Les exemplaires originaux dont la couverture en papier est imprimée sont filmés en commençant par le premier plat et en terminant soit par la dernière page qui comporte une empreinte d'impression ou d'illustration, soit par le second plat, selon le cas. Tous les autres exemplaires originaux sont filmés en commençant par la première page qui comporte une empreinte d'impression ou d'illustration et en terminant par la dernière page qui comporte une telle empreinte.

Un des symboles suivants apparaîtra sur la dernière image de chaque microfiche, selon le cas: le symbole \rightarrow signifie "A SUIVRE", le symbole ∇ signifie "FIN".

Les cartes, planches, tableaux, etc., peuvent être filmés à des taux de réduction différents. Lorsque le document est trop grand pour être reproduit en un seul cliché, il est filmé à partir de l'angle supérieur gauche, de gauche à droite, et de haut en bas, en prenant le nombre d'images nécessaire. Les diagrammes suivants illustrent la méthode.

TENDERS

The Subscribers will attend at H

IN EL

AT TWO P. M., ON MONDAY

purpose of receiving

GRAVELLING portions of the

as may be pointed out, and situate between

Section 1.---From or about the farm of Felix McGi

Section 2.---From or about Hirst's Hotel, to a poin

Section 3.---From opposite the residence of William
near the Toll-gate kept by Mr. John McLeod, and between the

Section 4.---From said side line in Pilkington to the

The Tenders must state the price per lineal chain
depth. The gravelling will be done upon such portio
the subscribers, and measured upon the completion of
greater depth than 6 inches the extra depth will be p

GRAVELLING portions of the

WANTED!

at **Hamilton's Hotel,**

ELORA,

MONDAY MAY 12th, 1862, for the

of receiving Tenders for

the Guelph and Elora ROAD,

between the points described as follows:—

of **Felix McGinn, Esq.,** to that of **Henry Hudson, Esq.**

to a point opposite to the residence of **William Darby, Esq.**

of **William Darby, Esq.,** to the side line in **Pilkington**
between the farms occupied by **Messrs. Haig and Mackenzie.**

from **Pilkington** to the termination of the road at **Elora.**

to be laid out on a **metal chain** for gravelling **9 feet** in width, and **6 inches** in
such portions of the road only as may be pointed out by
completion of the work. Where gravelling is ordered at **\$**
it will be paid for at the same proportionate rate as the

the **Guelph and Elora ROAD**

GRAVELLING portions of the G

as may be pointed out, and situate between the

Section 1.---From or about the farm of Felix McGinn,

Section 2.---From or about Hirst's Hotel, to a point of

Section 3.---From opposite the residence of William I
near the Toll-gate kept by Mr. John McLeod, and between the farm

Section 4.---From said side line in Pilkington to the te

The Tenders must state the price per lineal chain for depth. The gravelling will be done upon such portions the subscribers, and measured upon the completion of the greater depth than 6 inches the extra depth will be paid rest of the work. Contractors will furnish gravel, but of a quality gravelling in each section must be finished on or before the 14th day of June subscribers do not bind themselves to accept the lowest tender.

Elora, April 23, 1862.

(Observer P

The Guelph and Elora ROAD,

between the points described as follows:—

from that of **McGinn, Esq.**, to that of **Henry Hudson, Esq.**

to a point opposite to the residence of **William Darby, Esq.**

to **William Darby, Esq.**, to the side line in **Pilkington** between the farms occupied by **Messrs. Haig and Mackenzie.**

to the termination of the road at **Elora.**

to be laid out in a chain for gravelling **9 feet** in width, and **6 inches** in depth in such portions of the road only as may be pointed out by the surveyors in the execution of the work. Where gravelling is ordered at any place, the same shall be paid for at the same proportionate rate as the cost of a quality to be approved by the subscribers. The whole of the work shall be completed on or before the **4th day of July**, when the work will be measured and paid for. The

er.

JOHN SMITH,

CHARLES CLARKE,

ROAD COMMISSIONERS.

server Print.)

