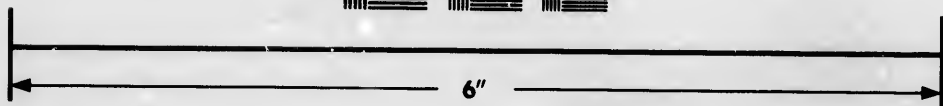
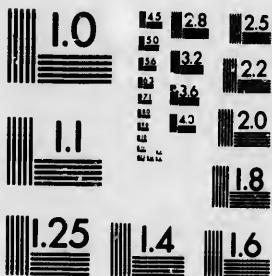


**IMAGE EVALUATION
TEST TARGET (MT-3)**



**Photographic
Sciences
Corporation**

23 WEST MAIN STREET
WEBSTER, N.Y. 14580
(716) 872-4503

**CIHM/ICMH
Microfiche
Series.**

**CIHM/ICMH
Collection de
microfiches.**



Canadian Institute for Historical Microreproductions / Institut canadien de microreproductions historiques

© 1986

Technical and Bibliographic Notes/Notes techniques et bibliographiques

The Institute has attempted to obtain the best original copy available for filming. Features of this copy which may be bibliographically unique, which may alter any of the images in the reproduction, or which may significantly change the usual method of filming, are checked below.

L'Institut a microfilmé le meilleur exemplaire qu'il lui a été possible de se procurer. Les détails de cet exemplaire qui sont peut-être uniques du point de vue bibliographique, qui peuvent modifier une image reproduite, ou qui peuvent exiger une modification dans la méthode normale de filmage sont indiqués ci-dessous.

- | | |
|---|---|
| <input type="checkbox"/> Coloured covers/
Couverture de couleur | <input type="checkbox"/> Coloured pages/
Pages de couleur |
| <input type="checkbox"/> Covers damaged/
Couverture endommagée | <input checked="" type="checkbox"/> Pages damaged/
Pages endommagées |
| <input type="checkbox"/> Covers restored and/or laminated/
Couverture restaurée et/ou pelliculée | <input type="checkbox"/> Pages restored and/or laminated/
Pages restaurées et/ou pelliculées |
| <input type="checkbox"/> Cover title missing/
Le titre de couverture manque | <input checked="" type="checkbox"/> Pages discoloured, stained or foxed/
Pages décolorées, tachetées ou piquées |
| <input type="checkbox"/> Coloured maps/
Cartes géographiques en couleur | <input type="checkbox"/> Pages detached/
Pages détachées |
| <input type="checkbox"/> Coloured ink (i.e. other than blue or black)/
Encre de couleur (i.e. autre que bleue ou noire) | <input checked="" type="checkbox"/> Showthrough/
Transparence |
| <input type="checkbox"/> Coloured plates and/or illustrations/
Planches et/ou illustrations en couleur | <input type="checkbox"/> Quality of print varies/
Qualité inégale de l'impression |
| <input type="checkbox"/> Bound with other material/
Relié avec d'autres documents | <input type="checkbox"/> Includes supplementary material/
Comprend du matériel supplémentaire |
| <input type="checkbox"/> Tight binding may cause shadows or distortion along interior margin/
La reliure serrée peut causer de l'ombre ou de la distorsion le long de la marge intérieure | <input type="checkbox"/> Only edition available/
Seule édition disponible |
| <input type="checkbox"/> Blank leaves added during restoration may appear within the text. Whenever possible, these have been omitted from filming/
Il se peut que certaines pages blanches ajoutées lors d'une restauration apparaissent dans le texte, mais, lorsque cela était possible, ces pages n'ont pas été filmées. | <input type="checkbox"/> Pages wholly or partially obscured by errata slips, tissues, etc., have been refilmed to ensure the best possible image/
Les pages totalement ou partiellement obscurcies par un feuillet d'errata, une pelure, etc., ont été filmées à nouveau de façon à obtenir la meilleure image possible. |
| <input type="checkbox"/> Additional comments:
Commentaires supplémentaires: | |

This item is filmed at the reduction ratio checked below/
Ce document est filmé au taux de réduction indiqué ci-dessous.

10X	14X	18X	22X	26X	30X
<input type="checkbox"/>	<input type="checkbox"/>	<input type="checkbox"/>	<input checked="" type="checkbox"/>	<input type="checkbox"/>	<input type="checkbox"/>
12X	16X	20X	24X	28X	32X

The copy filmed here has been reproduced thanks to the generosity of:

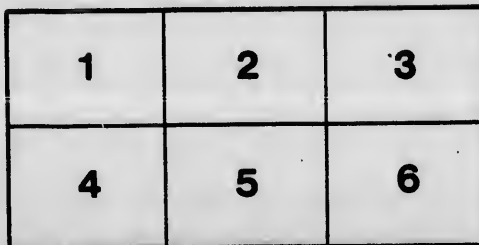
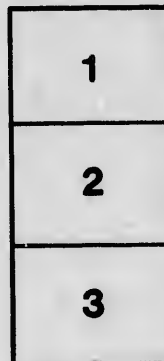
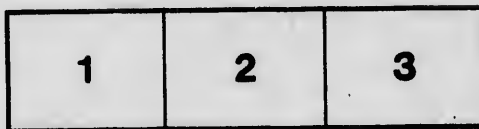
New Brunswick Museum
Saint John

The images appearing here are the best quality possible considering the condition and legibility of the original copy and in keeping with the filming contract specifications.

Original copies in printed paper covers are filmed beginning with the front cover and ending on the last page with a printed or illustrated impression, or the back cover when appropriate. All other original copies are filmed beginning on the first page with a printed or illustrated impression, and ending on the last page with a printed or illustrated impression.

The last recorded frame on each microfiche shall contain the symbol \rightarrow (meaning "CONTINUED"), or the symbol ∇ (meaning "END"), whichever applies.

Maps, plates, charts, etc., may be filmed at different reduction ratios. Those too large to be entirely included in one exposure are filmed beginning in the upper left hand corner, left to right and top to bottom, as many frames as required. The following diagrams illustrate the method:



L'exemplaire filmé fut reproduit grâce à la générosité de:

New Brunswick Museum
Saint John

Les images suivantes ont été reproduites avec le plus grand soin, compte tenu de la condition et de la netteté de l'exemplaire filmé, et en conformité avec les conditions du contrat de filmage.

Les exemplaires originaux dont la couverture en papier est imprimée sont filmés en commençant par le premier plat et en terminant soit par la dernière page qui comporte une empreinte d'impression ou d'illustration, soit par le second plat, selon le cas. Tous les autres exemplaires originaux sont filmés en commençant par la première page qui comporte une empreinte d'impression ou d'illustration et en terminant par la dernière page qui comporte une telle empreinte.

Un des symboles suivants apparaîtra sur la dernière image de chaque microfiche, selon le cas: le symbole \rightarrow signifie "A SUIVRE", le symbole ∇ signifie "FIN".

Les cartes, planches, tableaux, etc., peuvent être filmés à des taux de réduction différents. Lorsque le document est trop grand pour être reproduit en un seul cliché, il est filmé à partir de l'angle supérieur gauche, de gauche à droite, et de haut en bas, en prenant le nombre d'images nécessaire. Les diagrammes suivants illustrent la méthode.

etails
e du
odifier
une
image

errata
to

pelure,
on à



32X

BOUNDARIES OF SCHOOL DISTRICTS,

County of Westmorland, N. B.

The Board of Education, under the Authority of the Act 34 Vic. Cap. XXI, has established the following School Districts in the County of Westmorland.

Theodore H. Rand,
Chief Superintendent of Education.

EDUCATION OFFICE, FREDERICTON,
December 9th, 1874.

PARISH OF BOTSFORD

WOODSIDE.—School District No. 1, in the Parishes of Botsford and Westmorland, County of Westmorland.

This district extends along Great Shemogue Road from Oxley Brook to David Niles' North Line, and along the Davis Road from its junction with the Shemogue Road to Joseph Davis's N. East line, and along the Woodside Road one mile west of the Westmorland boundary, embracing all the farms or lands on these roads, on either side, including that of Jessie Tingley, together with any intervening lands.

BAYSIDE.—School District No. 2, in the Parish of Botsford, in the County of Westmorland.

This District embraces the front tier of lots on the Bay Shore from Timber River to John Rayworth's western line.

UPPER CAPE.—School District No. 3, in the Parish of Botsford, in the County of Westmorland.

This District embraces the front tier of lots on the Bay Shore from John Rayworth's west line to the Abideau on John Allan's marsh.

EMIGRANT ROAD.—School District No. 4, (A) in the Parish of Botsford, in the County of Westmorland.

Beginning at the south-east corner of Mrs. Murphy's farm and following the rear line thereof, and said line produced westerly to Daniel Mahoney's west line, thence direct to Benjamin Allen's bridge

on Cove road, thence due west to Timber River, thence north crossing the main road to a point cutting Daniel McCarthy's rear line produced, thence easterly to the northwest corner of Patrick Reiley's farm, embracing the settlers on the Tina Savage Road, with their farms, thence southerly to the place of beginning.

EMIGRANT ROAD.—School District No. 5, (B) in the Parish of Botsford, in the County of Westmorland.

This District embraces one tier of lots on each side of the Emigrant Road, from District No. 4 to William Barry's east line on the one side of said road and James Spence's west line on the other side.

EMIGRANT ROAD.—School District No. 6, (C) in the Parish of Botsford, in the County of Westmorland.

This District embraces one tier of lots on each side of the Emigrant Road, between District No. 5 and the eastern extremity of said road.

LOWER CAPE.—School District No. 7, in the Parish of Botsford, in the County of Westmorland.

This District embraces the front tier of lots along the Bay shore from District No. 3 to John McKay's westerly line.

THE BAY SHORE.—School District No. 8, in the Parish of Botsford, in the County of Westmorland.

This District extends from John McKay's westerly line to Richard Allan's northerly line, embracing the front tier of

lots on the Bay shore within said lines or bounds.

BAYFIELD.—*School District No. 9, in the Parish of Botsford, in the County of Westmorland.*

Bounded south by Richard Allan's north line produced to the Emigrant Road; east and north by the shore as far as to William Spence's south-westerly line; thence by said line prolonged to the rear of the Emigrant lots; thence by said rear running easterly to Daniel Lean's east line; thence by said east line till it strikes the Emigrant road.

SPENCE.—*School District No. 10, in the Parish of Botsford, in the County of Westmorland.*

This District extends westerly along the North Shore road from William Spence's south-westerly line, to the west boundary of lands occupied by James Spence, embracing all the farms on said road between said lines, together with the lands between these and the Emigrant lots.

MURRAY'S CORNER.—*School District No. 11, in the Parish of Botsford, in the County of Westmorland.*

This District extends westerly along the Shore road from James Spence's west boundary to Amos Murray's west boundary, and southerly along the Murray road, from the Shore road to the west lines of James Stevens and of Joseph Murray, embracing all the farms on said roads, within said limits or bounds.

CHAPMAN.—*School District No. 12, in the Parish of Botsford, in the County of Westmorland.*

This District extends along the Shore road from Amos Murray's west boundary to Kelley's Creek, embracing all the Shore lots between said limits.

MURRAY ROAD.—*School District No. 13, in the Parish of Botsford, in the County of Westmorland.*

This District extends along the Murray road from District No. 11 to the east lines of William Duncan and John Amos, embracing two tiers of lots on each side of said road to that extent.

MOUNT PLEASANT.—*School District No. 14, in the Parish of Botsford, in the County of Westmorland.*

This District extends along the Murray road from the east lines of William Duncan and John Amos to Oulton's corner, and along the Oulton road from District No. 4 to said corner, and thence westerly along Little Shemogue road to William

Blackloc's south line, embracing all the lands on said roads within said bounds.

CHAPMAN.—*School District No. 15, in the Parish of Botsford, in the County of Westmorland.*

Bounded as follows:—South by Wm. Blacklock's south line to Little Shemogue river; thence north easterly by the rear of the Simpson Grant to Kelly's Creek; thence by the Shore round Shemogue Head and up Fox Creek to George Amos's at the Big Shemogue road; thence by a direct imaginary line to the south-west corner of lands occupied by John Murray; thence by his south line, and said line prolonged to William Taylor's east line; thence directly to the western extremity of first-named line.

BRISTOL.—*School District No. 16, in the Parish of Botsford, in the County of Westmorland.*

This District extends along the Shemogue road from Fox Creek to the north line of Geo. Grant, and along the following roads from their junction with the Shemogue road, namely: the Midgie road to the Parish line, the Little Cape road to Nelson Trene's east line, the road to Downing's Point to its extremity, and the road to Long Lake as far as it is settled, embracing all the farms and lands on both sides, and on all of said roads.

BOTSFORD PORTAGE.—*School District No. 17, in the Parish of Botsford, in the County of Westmorland.*

This District extends along the Portage road from Geo. Grant's north line to Thaddi O'Brien's north line, embracing all the farms and lands on said road within the said bounds, together with the lands of Amos Goquin.

LITTLE CAPE (SOUTH.)—*School District No. 18, in the Parish of Botsford, in the County of Westmorland.*

This District extends westerly along the Shore road from Nelson Trene's east line to Philippe Melancon's west line, embracing the Shore lots within said bounds.

LITTLE CAPE (NORTH.)—*School District No. 19, in the Parish of Botsford, in the County of Westmorland.*

This District extends westerly along the Little Cape road from Philippe Melancon's west line to Thaddi Burk's westerly line, embracing all the residents and farms on said road within said bounds.

CAPE BALD.—*School District No. 20, in the Parish of Botsford, in the County of Westmorland.*

This District extends westerly from the

east
along
Abie
and
CHA
P
C
B
along
north
land
Man
with
and
betw
said
thei
erly

CAP
of
lan
B
She
erly
the
mer
ish
the
line.
Don
P
W
B
tric
north
Tur
to s
line,
Mit
ME
P
W
B
No.
land
proc
five
of G
east
lots.
W
P
th
B
the

eastern extremity of Cape Bald settlement along the line of the Shore road to Tedish Abideau, and embraces all the residents and their lands within said bounds.

CHAPEL.—*School District No. 21, in the Parishes of Botsford and Shediac, in the County of Westmorland.*

Bounded as follows:—Extends westerly along the Post road from Thaddi O'Brien's northerly line to the westerly line of the lands occupied by Pasifique LeBlanc and Martin LeBlanc, embracing all the lands within the said bounds, also the residents and their farms on the Little Cape road between Thaddi Burk's westerly line and said Post road, and the residents and their lands between Gregory Burk's easterly line and the Post road at the Chapel.

PARISH OF DORCHESTER.

CAPE.—*School District No. 1, in the Parish of Dorchester, in the County of Westmorland.*

Bounded as follows:—Westerly by Shepody Bay and Dorchester River; northerly by Palmer's Creek, but not to include the possessions of Captain Ebenezer Palmer; south-easterly by the Sackville Parish line, delected to include the lands of the families named "Cook," near said line.

DORCHESTER.—*School District No. 2, in the Parish of Dorchester, in the County of Westmorland.*

Bounded as follows:—Southerly by District No. 1; west by Dorchester River; north by the line dividing the lands of Turner and Weldon, prolonged westerly to said river; easterly by Sackville parish line, but not to include the lands of the Mitten family.

MIDDLETON.—*School District No. 3, in the Parish of Dorchester, in the County of Westmorland.*

Bounded as follows:—South by District No. 2, that is by the line dividing the lands of J. C. Turner and Thomas Weldon, produced to Dorchester river; west by said river; north by the line dividing the lands of George F. Black and W. K. Chapman; east by the rear line of the front tier of lots.

WOODVILLE.—*School District No. 4, in the Parishes of Dorchester and Sackville, in the County of Westmorland.*

Bounded as follows:—South-westerly by the line dividing the lands of William

Chapman and George Fillmore; westerly by the base line of the front tier of lots on Dorchester road, and by the eastern boundaries of the lands of Elijah Ayer and James Anderson; north by James Anderson's south line and Elijah Ayer's south line; east by an imaginary line including all the lands in the Woodville settlement.

CENTREVILLE.—*School District No. 5, in the Parish of Dorchester, in the County of Westmorland.*

Bounded as follows:—South by the line dividing the lands of Geo. F. Black and W. H. Chapman, prolonged to Dorchester river; west by said river; north by the north line of Geo. Bishop, prolonged westerly to said river, and easterly to the rear of the front tier of lots; easterly by the rear of the front tier of lots, that is, the lots on the main road, and by the eastern boundaries of the lands of Elijah Ayer and James Anderson.

THE LAKE.—*School District No. 6, in the Parish of Dorchester, in the County of Westmorland.*

Bounded as follows:—South by the north line of the lands of George Bishop, prolonged west to Dorchester river, and east to the rear of the front tier of lots; west by said river; north by the south line of William Bissett, prolonged to said river; east by the base line of the front tier of lots.

BONHOMME.—*School District No. 7, in the Parish of Dorchester, in the County of Westmorland.*

Bounded as follows:—South by the south line of lands occupied by Yves Dupuis; west by the rear line of the front tier of lots situated on Dorchester road; north by the north line of the lands of Teakles and Kinnear; east by the rear line of the second tier of lots from Dorchester road.

DUNGIVEN.—*School District No. 9, in the Parish of Dorchester, in the County of Westmorland.*

Bounded as follows:—South by the north lines of the lands of William Lawrence and Sauvere Belliveau; west by lands known as the Des Barres Grant; north by the north lines of the lands of Matthew Tait and Samuel Tait, and said lines prolonged easterly one mile beyond the parish line; east by an imaginary line drawn thence southerly to the north-east angle of Patrick Powell's land; thence by the north line of his land till it strikes Dorchester river; thence by said river down till it

meets the north line of William Lawrence.

MCGINLEY.—*School District No. 10, in the Parish of Dorchester, in the County of Westmorland.*

Bounded as follows:—Beginning at Dorchester river at the point cut by the prolongation of the northerly line of the land occupied by Philip Cormier, thence following said line so prolonged to his rear line; thence southerly along said rear line to the north line of the lands of the late Laurant B. LeBlanc; thence westerly along last-named line and crossing Moncton road to and along the north line of David LeBlanc's land to Jerome Legere's Mill Brook; thence down said brook to said river; thence northerly up stream to the point of beginning.

DOVER ROAD CORNER.—*School District No. 11, in the Parish of Dorchester, in the County of Westmorland.*

Bounded as follows:—Easterly on District No. 10; northerly by the Petitcodiac Lake Brook; westerly by the boundary of the Des Barres Grant till it meets the west line of Joseph P. Cormier's land; thence by said line, and the west line of the late Raphile LeBlanc; southerly by the rear line or lines of the lots on the south side of the Dover road as far easterly as to the Mountain road; thence by a direct imaginary line drawn to the north line of David B. LeBlanc at Jerome Legere's Mill Brook.

THE MOUNTAIN.—*School District No. 12, in the Parish of Dorchester, in the County of Westmorland.*

Bounded as follows:—Northerly on Districts Nos. 10 and 11; westerly by the base line between the Dorchester river lots and those of Petitcodiac river; southerly by the south line of the lands of the late Joseph Melancon, prolonged to the Dorchester river; easterly by said river.

CHAPEL.—*School District No. 13, in the Parish of Dorchester, in the County of Westmorland.*

Bounded as follows:—North by the South line of the lands of the late Joseph Melancon, prolonged to Dorchester river; west by the base line of the lots on Memramcook road; south by the south line of Belloni Burk's lands; east by Dorchester river.

ROCKLAND.—*School District No. 14, in the Parish of Dorchester, in the County of Westmorland.*

Bounded as follows:—North by District No. 22, south by District No. 21, east by Memramcook river, west by District No. 15.

BUDREAU.—*School District No. 15, in the Parish of Dorchester, in the County of Westmorland.*

Bounded as follows:—East on District No. 14; south by the prolongation of Robert A. Chapman's south line to the Petitcodiac river; west by said river; north by Dock Creek, so called, running from said river easterly to the base line of the lots on the main road.

BELLIVEAU.—*School District No. 16, in the Parish of Dorchester, in the County of Westmorland.*

Bounded as follows:—South by Dock Creek, so called; west by Petitcodiac river; north by the south line of the lands or lot of the late Thomas Belliveau, but including in this district the lands of Thomas C. White, at the east end of said Belliveau lot, last named line being prolonged west to said river; east by the base line of the lots within said bounds.

GOTHRO.—*School District No. 17, in the Parish of Dorchester, in the County of Westmorland.*

Bounded as follows:—South by District No. 16; west by Petitcodiac river; north by James Powell's south line; east by the base line of the river lots.

LOWER DOVER.—*School District No. 18, in the Parish of Dorchester, in the County of Westmorland.*

Bounded as follows:—South by James Powell's south line; west by Petitcodiac river; north by William Steeves' north line; east by the Des Barres Grant, so called.

MOUTH OF DOVER ROAD.—*School District No. 19, in the Parish of Dorchester, in the County of Westmorland.*

Bounded as follows:—West by Petitcodiac river; north by Moncton Parish line from said river as far easterly as to the rear of the fourth tier of lots from said river; easterly by a direct imaginary line drawn thence to Robert Ballard's west line; thence by said west line to its southern extremity; thence by an imaginary line drawn to the south-east corner of Andrew Govang's land; thence by said Govang's south line; thence by his west line to the north-east corner of the lands of James O'Neill; south by the north line of said O'Neill, running to the river aforesaid.

UPPER DOVER.—*School District No. 20, in the Parish of Dorchester, in the County of Westmorland.*

Bounded as follows:—South by William

Ste
rive
east
Sou
of
B
Dry
mat
Pet
ram
TAY
2
C
B
pro
clud
Bur
Cor
John
own
Wa
we
Vill
Dist
Loc
t
o
B
She
the
lan
sou
Gar
dra
pro
lan
on
lon
froy
line
HA
t
E
dist
bou
Mo
Kir
the
gra
line
Fe
t
o
E

Steeves' north line; west by Petitcodiac river; north by James O'Neil's north line; east by the DesBarres Grant, so called.

SOUTH ROCKLAND.—*School District No. 21 in the Parish of Dorchester, in the County of Westmorland.*

Bounded:—North by lands of James Drysdale; west by rear line of R. A. Chapman's land and continuation of same to Petitcodiac river; south and east by Memramcook river.

TAYLOR'S VILLAGE.—*School District No. 22, in the Parish of Dorchester, in the County of Westmorland.*

Bounded:—North by the north line of property owned by David Taylor, but excluding the properties owned by Beloni Burk, Vetal Burk, John Landry and Fred. Cormea; south by the north line of the John Lamb property, so called, now owned by George Cochrane and James Wallace; east by the Memramcook river; west by the rear line dividing Taylor's Village from Budreau and Billiveau School Districts, Nos. 15 and 16.

PARISH OF MONCTON.

LOCKHART.—*School District No. 1, in the Parish of Moncton, in the County of Westmorland.*

Bounded as follows:—On the east by Shediac parish line running southerly to the south east of William Hemsworth's lands; thence by an imaginary line drawn south easterly to the south east of Robert Garishe's lands, on the south by a line drawn thence next to meet the southern prolongation of the west line of the lot of land on which Rev. William Allan resides; on the west by the said west line so prolonged; on the north by a line drawn east from the north extremity of last named line to the parish line aforesaid.

HARRISVILLE.—*School District No. 2, in the Parish of Moncton, in the County of Westmorland.*

Bounded as follows:—On the east by district No. 1; on the south by the south bounds of the lots on the road leading from Mouton to Shediac; on the west by Hasen Kinnear's west line, and a line running thence to the north west of the Gould grant, so called; on the north by the rear line of the French grants.

FOX CREEK.—*School District No. 3, in the Parish of Moncton, in the County of Westmorland.*

Bounded as follows:—On the south by

the Parish line; on the west by the Petitcodiac river; on the north by the north line of the late Charles White, prolonged easterly to the rear of the second tier of lots from said river; on the east by said rear line till it strikes the parish line aforesaid.

CHARTERS.—*School District No. 4, in the Parish of Moncton, in the County of Westmorland.*

Bounded as follows:—On the south by the north line of the late Charles White; on the west by the Petitcodiac river; on the north by the north line of the lands of Frank Thibedo running west to the foot of the upland, thence along the marsh border towards the river to an old dyke between the French marsh and the David Wilbur's marsh, thence following said dyke to the river aforesaid; on the east by the rear line of the front lots.

TOWN OF MONCTON.—*School District No. 5, in the Parish of Moncton, in the County of Westmorland.*

District No. 5, embraces the area formerly comprising "The Municipality of Moncton," together with the lands on the post road extending from the border of said Municipality as far west as Andrew Somer's east line, and the lands as far north of said Municipality as to the south bounds of the school districts on Lutz Mountain road, and not included in other districts.

IRISHTOWN ROAD.—*School District No. 6, in the Parish of Moncton, in the County of Westmorland.*

Bounded as follows:—North by Cocaigne river and R. C. Scovil's land, produced to the line easterly by William Johnson's west line; south by the rear line of the lots of the McDougall settlement; west by James O'Donnel's west line prolonged to the river aforesaid.

IRISHTOWN.—*School District No. 7, in the Parish of Moncton, in the County of Westmorland.*

Bounded as follows:—North by Cocaigne river; east by district No. 6, by Caledonia district and the eastern boundary of lots on the Irishtown road; south by the south line of the Fitzgerald lot, so called, and said line prolonged westerly to a point equally distant from Irishtown road and the McLaughlan road; west by an imaginary line drawn thence northerly, parallel to last named road, to the Cocaigne river aforesaid.

RITCHIE.—*School District No. 8, in the Parish of Moncton, in the County of Westmorland.*

Bounded as follows:—North by district No. 7, and by the Budd district hereafter described; east by the eastern bounds of the lots on Irishtown road; south by Louther Somers' north line prolonged west to the McLaughlin road; west by last named road.

THE MILL.—*School District No. 9, in the Parish of Moncton, in the County of Westmorland.*

Bounded as follows:—North by the Ritchie district and the Groundwater district, hereafter described; east by the Harrisville district; south by the Shediac line of road prolonged to the Irishtown road, thence by last named road prolonged to Hall's Creek, thence by said Creek up stream to the western boundary of Stephen Humphrey's lands; west by said western boundary prolonged to the Groundwater district aforesaid. Excluding from this district the Abner Jones farm.

LOUISVILLE.—*School District No. 10, in the Parish of Moncton, in the County of Westmorland.*

Bounded as follows:—North by the Mill district; east by the Harrisville district, and the Charter's district; south by the Petitcodiac river and Hall's creek; west by the Mill district and Hall's creek. Including in this district the Abner Jones' farm.

WILSON.—*School District No. 11, in the Parish of Moncton, in the County of Westmorland.*

Bounded as follows:—East by Andrew Somers' east line; south by the Petitcodiac river; west by Malcolm Somers' east line; north by the rear boundaries of the River lots.

STEEVES.—*School District No. 12, in the Parish of Moncton, in the County of Westmorland.*

Bounded as follows:—East by the east line of Malcolm Somers; west by William Nichol's east line; north by the rear line of the river lots; south by the Petitcodiac river.

BOUNDARY CREEK.—*School District No. 13, in the Parish of Moncton, in the County of Westmorland.*

Bounded as follows:—East by William Nichol's east line; south by the Petitcodiac river; west by Frederick Wortman's west line, or the district at Salisbury Corner; north by the rear bounds of the front or river lots. Including in this District the

property now owned by Warren Taylor.

STEEVES MOUNTAIN.—*School District No. 14, in the Parish of Moncton, in the County of Westmorland.*

Bounded as follows:—West by Salisbury parish line; north by Kent County line; east by Archibald Steeves' east line prolonged to said County line; south by the rear line of the river lots, including the lands owned by Job Steeves the second, Alexander Brown and James Brown.

R. R. CROSSING.—*School District No. 15, in the Parish of Moncton, in the County of Westmorland.*

Bounded as follows:—West by Steeves' Mountain District; north by the County line; west by Charles Gammon's east line prolonged north to said County line, and south to the Petitcodiac river lots; south by the rear bounds of said river lots.

LUTZ MOUNTAIN.—*School District No. 16, in the Parish of Moncton, in the County of Westmorland.*

Bounded as follows:—West by District No. 15; thence as follows: beginning at the border of said district on the road leading to the Matthew's Settlement, and running thence east along said road to the road leading to David Rogers; thence along last named road to the north line of the lots on the road leading past Malcolm Steeves'; thence easterly along said north line or lines to Levi Steeves' east line; thence south along last named line to the north-east of Alexander Clark Lutz's farm; thence south along his east line prolonged to its intersection with the prolongation of the south line of the lands of Steeves, purchased from Jonas Cutler; thence westerly along last named line to his south-west; thence along an imaginary line to the south-east of District No. 15 first named.

GROUNDWATER.—*School District No. 17, in the Parish of Moncton in the County of Westmorland.*

Bounded as follows:—West on Lutz Mountain District as far north as Horsman's mill, and running thence north on Alexander Clarke Lutz's east line to Matthew Wilson's south line; thence along his south line to his east line; thence north to his north-east; thence along an imaginary line directly to Sam Somers' north-west; thence due east to the McLaughlin road; east by said road running thence south one mile south of the Lutz Mountain road; southerly by an imaginary line drawn thence directly to the south-east of Lutz Mountain district aforesaid.

INDIAN MOUNTAIN.—*School District No. 18, in the Parish of Moncton, in the County of Westmorland.*

Bounded as follows:—West on R. R. Crossing District; north by Kent County line; east by the west line of Ornon Somers, prolonged north to said County line and south to the border of Lutz Mountain district; south by said border running thence west to the R. R. Crossing district first named.

STILES.—*School District No. 19, in the Parish of Moncton, in the County of Westmorland.*

Bounded as follows:—West on Indian Mountain District; north by Kent County line; east by the east line of the lands of Philip Kelly, prolonged north to said County line, and by a line drawn from the south extremity of said east line directly to David McFeater's north-east corner; thence southerly by said McFeater's east line running to the border of Groundwater district; thence by said border westerly to Alexander Clark Lutz's north-east line; thence directly to the border of Indian Mountain District first named.

BUDD.—*School District No. 20, in the Parish of Moncton, in the County of Westmorland.*

Bounded as follows:—West on the Stiles District; north by the southern boundary of the lots on the Cross Road leading from John McQuade's, and said boundary prolonged to the west boundary of the Stiles District; easterly by the west line of lots of land on the McLaughlan road running southerly to a point in range with the communication road; thence by a direct line running east to last named road, and by said road to the boundary of Irishtown district; thence by said boundary running southerly to the prolongation of the north boundary of the Groundwater district; south by the last named district.

MCLAUGHLAN ROAD.—*School District No. 21, in the Parish of Moncton, in the County of Westmorland.*

District No. 21 extends along the McLaughlan road, nearly three miles southerly from Cocaigne river, to the north boundary of the Budd district near the communication road, embracing all the farms on said road within said bounds, together with all the lands on the Hibernia road, so called, or in the Hibernia settlement.

NEW SCOTLAND.—*School District No. 22, in the Parish of Moncton, in the County of Westmorland.*

Bounded as follows:—North by Kent County line; east by Samuel West's east line; south by the southern bounds of the lots on the New Scotland road; west by districts Nos. 19 and 21.

CALEDONIA.—*School District No. 23, in the Parish of Moncton, in the County of Westmorland.*

Bounded as follows:—Beginning at the mouth of McLean's brook on Shediac river and running south across said river to the road leading to the Cape Breton settlement; thence westerly along said road to Donald McDonald's eastern boundary; thence along said boundary to the south-east corner of his lot; thence west along the rear or base line of the block prolonged to intersect the prolongation of John Robert's west line; thence north along said west line, so prolonged, to the road leading to Irishtown; thence along the west boundary of other lots of same block to the north-west corner of land owned by J. & C. Harris; thence along the north boundary of last named land to the Hennigan Road; thence along said road to the north-west corner of land formerly owned by the late William Chandler; thence running east by an imaginary line to the north-west corner of Allan Murray's lot; thence south to the south-west corner of lot of land owned by Donald Duff; thence east following south line of said lot to its south-east corner; thence north to the north-west corner of lands owned by John McLean; thence east to the north-east corner of said land; thence south to John McLean's south-east corner of said land; thence south easterly to the place of beginning.

PARISH OF SACKVILLE.

SECOND WESTCOCK.—*School District No. 1, in the Parish of Sackville, in the County of Westmorland.*

Bounded as follows:—South westerly by Grandane District No. 4, north westerly by Shepody Bay and Dorchester parish line deflected so as not to include the lands of the families named Cook near said parish line; north easterly by the Intercolonial railroad, south easterly by the rear line of the Second Westcock Hill lots.

LOWER ROCKPORT.—*School District No. 2, in the Parish of Sackville, in the County of Westmorland.*

Bounded as follows:—District No. 2 embraces the peninsula from Cape Maranguin to the Paint Road, so called, between lots 43, Letter A, and 10 letter B division,

by the Milledge plan, and leading from Peck's Cove to the south-east corner of lot No. 3; thence south-westerly along the rear line of last named lot, prolonged to the shore of Shepody Bay.

UPPER ROCKPORT.—*School District No. 3, in the Parish of Sackville, in the County of Westmorland.*

Bounded as follows:—South-westerly by District No. 2; south-easterly by the Bay of Fundy, north-easterly by the division line between Letter B and Letter C, 44 acre lots at Green Creek, north-westerly by the rear line of lot No. 48 of the second tier of said lots and said rear line, prolonged south-west to District No. 2.

GRANDANSE.—*School District No. 4, in the Parish of Sackville, in the County of Westmorland.*

Bounded as follows:—South-westerly by District No. 2, north-westerly by Shepody Bay; north-easterly by the north-east line of lot No. 43 of the 44 acre lots in Letter C division by the Milledge plan, and said line prolonged north-westerly to the Bay shore, south-easterly by District No. 2.

WOOD POWER.—*School District No. 5, in the Parish of Sackville, in the County of Westmorland.*

Bounded as follows:—On the south-west by the line below Allan's Creek, dividing the 44 acre lots from the 100 acre lots; on the south-east by Cumberland Bay up to Wood Creek; thence up said creek to the Abotdeau; thence running northerly along the road from the Abotdeau to the line of land owned by the late Edward Barnes; thence south-west along said line to the south corner of said land; thence north-westerly along the south-west line of said land to the upland; thence south-westerly following the line between the land of Robert L. Hazen and land occupied by Sanford Barnes till it strikes the road leading from Westcock to Woodpoint. (all of Hazen's land in this body to go into No. 5) thence following said road southerly to the line between John Boultenhouse and Chipman Chase; thence following last named line and the line between said Boultenhouse and the Snowden property northerly and westerly to lands owned or occupied by the Church Road settlers. This District is bounded on the north-west by the rear line of the said 100 acre lots, and by the lands of the residents of the Church road settlement.

WASSTON.—*School District No. 6, in the Parish of Sackville, in the County of Westmorland.*

Bounded as follows:—On the south-west by Wood Point district and Second Westcock Hill district; on the south-east by Cumberland Bay; on the north-east by the Tantramar river running up to Mill Creek; thence up said creek to the line between Rufus Bulmer and Weldon Richardson; thence running north-westerly along said line to the south-west line of the land of John Richardson and along last named line to the main road; thence north-easterly along said road to the south-west line of lands occupied by Oliver Wry; thence north-westerly along last named line till it meets the prolongation of the south-east line of the Christopher Humphrey grant; thence for the north-west boundary of the district, we run south-westerly along said south-east line of said grant and its prolongation to the Intercolonial Railway.

FAIRFIELD.—*School District No. 7, in the Parish of Sackville, in the County of Westmorland.*

Bounded as follows:—On the southwest by the main road leading from Sackville to Dorchester and by Dorchester Parish line, but including all the residents of the Mitten settlement; on the north-west by said parish line and the new road from Dorchester corner to Beech Hill; on the north-east by the south-west tier line of lots Nos. 28, 27; and 26, prolonged north-westerly to said road; on the south-east by the north-west line of the wood lots in Letter B division, Nos 20 and 21, owned by John and Robert Fawcett; thence by an imaginary line drawn southerly from the west angle of said lot, No. 20, at the Fairfield road to the north angle of Westcock district; thence south-westerly along the boundary of said district to road first named.

COLES ISLAND.—*School District No. 8, in the Parish of Sackville, in the County of Westmorland.*

Bounded as follows:—Beginning at the mouth of Sackville river and running up said river to the mouth of the Jolicure canal; thence up said canal to the old cross dyke, so called; thence following said dyke and its prolongation to the Aulac river; thence down Aulac river to place of beginning.

SACKVILLE.—*School District No. 9, in the Parish of Sackville, in the County of Westmorland.*

Bounded as follows:—On the south-west by the north-east boundary of Westcock District from Sackville river to the intersection of Oliver Wry's south-west line

with
the s
Hum
the F
trict,
longa
line v
said l
the s
south
leadin
weste
point
line b
gley;
named
to the
the F
West
said
then
Long
road
river
of N
BEA
10
Co
Be
the r
calle
lines
in L
ville
28 in
south
the
ly b
the
dary
broc
a di
occu
than
Bab
lot
wes
ter
nor
said
UPP
1
C
B
hou
Fee
the
Phi
Ma
the
the

with the north-easterly prolongation of the south-east line of the Christopher Humphrey grant; on the north-west by the Fairfield district and Beech-hill district, running north-easterly to the prolongation of Philip Palmer's north-east line which is the division line between the said P. Palmer and Zechariah Tingley; on the north-east by the said line running south-easterly till it strikes the main road leading through Sackville, thence south-westerly following the main road to a point in a direct line with the division line between P. Palmer and Josiah Tingley; thence south easterly following last named division line and its prolongation to the Mill Creek; thence up said creek to the Bridge on the road leading to the West Marsh, thence south-easterly along said road to the Out Creek Aboideau, thence continuing along said road to the Long Creek Aboideau, thence along said road and its prolongation to the Sackville river; on the south-east by the boundary of No. 8.

BEACH HILL.—*School District No. 10, in the Parish of Sackville, in the County of Westmorland.*

Bounded as follows:—North easterly by the north-west line of the Lander farm, so called; north-westerly by the north-west lines of the Wood Lots Nos. 22, 23 and 25 in Letter O Division of the town of Sackville, and by Wood Lots Nos. 61, 44 and 28 in Letter B Division in said township; south-westerly by the south-west line of the lands of Eliphalee Read; south-easterly by lots Nos. 25 and 38, by a section of the mill pond, and by the south-east boundary of lands occupied by Asa Easterbrooks, thence running north-easterly in a direct line to the west corner of lands occupied by Caleb Babcock and Sons, thence along the north-west line of said Babcock's lands and its prolongation to lot No. 61; bounded thence by the north-west lines of lots Nos. 61, 4 and 36 in letter C Division to the prolongation of the north-east line of the Lander farm aforesaid.

UPPER SACKVILLE.—*School District No. 11, in the Parish of Sackville, in the County of Westmorland.*

Bounded as follows:—North by the south line of lands occupied by Dan McFee, and by an imaginary line drawn thence touching the north extremity of Phinney Island and extending to the Main stream of floating Canal; thence by the south boundary of the Midgie District; thence bounded easterly by the Parish

line as far as the old Marsh road; thence southerly and easterly by Cole's Island district; on the south-west by the north-east boundary of No. 9; on the north-west by the south-east boundary of Beech Hill district and its prolongation northerly till it meets the southline of Daniel McFee or its prolongation.

COOKVILLE.—*School District No. 12, in the Parish of Sackville, in the County of Westmorland.*

Bounded as follows:—North by James Distant's north line prolonged to Westmorland Parish line; west by the base line of the lots on the Cookville road, running southerly; south by Thompson Easterbrooks' south line prolonged till it strikes the main stream running from Cookville; east by the said main stream running northerly to Hazen Easterbrooks south line, thence easterly along said line to the Westmorland Parish line, thence along said parish line to the south-west corner of the Mill lot, so called, thence northeasterly to the east corner thereof, thence north-westerly to the parish line again.

MIDGIC.—*School District No. 13, in the Parishes of Sackville and Westmorland, in the County of Westmorland.*

Bounded as follows:—Beginning on the road leading from Midgie to Centreville at Daniel Fillmore's north line, following said line to Fillmore's north-east corner; thence by an imaginary line in a southerly direction to Miles Finney's north corner; thence along said Finney's north-east line to his east corner; thence by an imaginary line to the Big Canal where it flows from Long Lake; thence following said Canal to a point in a direct line to the Dixon Ditch; thence by said line and said ditch and the road, to the main Canal leading from Obokville; thence along said main Canal or stream northerly to a point in a direct line with Hazen Easterbrooks' south line; thence along said line to his south-east corner; thence by an imaginary line to Daniel Fillmore's north line on the Centreville road, the place of beginning.

ABOUJAGAN ROAD.—*School District No. 14, in the Parish of Sackville, in the County of Westmorland.*

Bounded as follows:—North by the northern boundary of Robert Towse's meadow; east by the base line of the Cookville lots running southerly to the point cut by the west prolongation of Joseph Patterson's north line; south by Robert Main's north line; west by the base line of the lots on the Aboujagan road.

CHERRYDALE.—*School District No. 15, in the Parish of Sackville, in the County of Westmorland.*

Bounded as follows:—North by Robert Main's north line and said line, produced easterly to the Main stream leading from Cookville; east by said stream, running thence to a point opposite to Phinney Island; south by an imaginary line drawn thence to Daniel McFee's south line and by said McFee's south line; west by the rear line of lots on the Abonjagan road, including also the farms of Robert Amos, Wilson Thompson and Alexander Amerson.

ORDERED, December 18th, 1873, that all dyked marsh lands in the Parish of Westmorland owned by residents respectively of School Districts Nos. 8, 9, and 11, in the Parish of Sackville be attached to and included in the District in which such resident lives.

PARISH OF SALISBURY.

PETITCODIAC.—*School District No. 1, in the Parish of Salisbury, in the County of Westmorland.*

Bounded as follows:—Beginning on the Petitcodiac river, at the south extremity of James Taylor's east line, and running along said line to his rear; thence westerly along his rear line and its prolongation to the North river; thence westerly by an imaginary line, excluding Uz Bleakney's farm, to the north-west line of James Price's land on the Anagance; thence southerly along his western line prolonged to the south line of lot 59, granted to John D. McLean; thence easterly along the southern line thereof, prolonged to the north boundary of range of lots granted to G. W. Roberts and others; thence east along said north boundary to the north east line of lot 55, granted to R. Seely; thence along an imaginary line, running north-easterly to the intersection of the north-west line of lot 24 granted to P. R. Inchea, with the road leading from Petitcodiac station to Pollett river; thence directly to the south-east line of Samuel Stover's lands; thence northerly along his eastern line to the river first named; thence up stream to the place of beginning.

CENTRETS.—*School District No. 2, in the Parish of Salisbury, in the County of Westmorland.*

Bounded as follows:—North by the southern boundary of District No. 1, running easterly from the south corner of lot 59 granted to John McLean, to the intersection of the north-west line of lots Nos. 24 and 25 granted to P. R. Inchea, with the road leading from Petitcodiac station to Pollett river; thence running north-easterly along said line of said lots to the north corner of lot 25 aforesaid; thence south-easterly along the end line of the same prolonged to the north-west corner of the Glebe lot No. 8; thence easterly along the northern line of said Glebe to the north-east angle thereof; thence south-easterly on a direct line to the south-west angle of the 25 acres lot granted to James Baunister; thence east along the south line thereof prolonged to Albert County line; thence along said County line, first southerly, then westerly till it strikes the west line of lot 21, granted to Robert Ferguson; thence north-easterly along a direct imaginary line to the south angle of lot 59 to the place of beginning.

JONES.—*School District No. 3, in the Parish of Salisbury, in the County of Westmorland.*

Bounded as follows:—Beginning at the southern extremity of James Taylor's east line on the Petitcodiac river; and following said line to his rear; thence north-easterly along the rear of the David Bleakney grant to the north-east angle thereof; thence a direct imaginary line to the most southern corner of lands granted to Allat Godard; thence following an imaginary line north-easterly to the south-east corner of lands granted to George Jones; thence northerly along his west line to the south-west angle of Samuel Crosthwaite's lands; thence south-easterly along an imaginary line to the north-east corner of Daniel Holme's lands; thence southerly along his east side line to the south side line of the Martin Gay grant; thence south-westerly along last named line to the south corner of the same; thence along a direct imaginary line to the south-east corner of Samuel St-eyes' lands at the boundary of District No. 1; thence northerly along said boundary to the Petitcodiac river; thence up stream to the place of beginning.

CENTRAL POLLETT RIVER.—*School District No. 4, in the Parish of Salisbury, in the County of Westmorland.*

Bounded as follows:—Beginning at the north corner of lot 25, granted to Peter R. Inchea on the border of District No. 2; and running south-easterly along said border to Albert County line; thence norther-

by the
No. 1, run-
ner of lot
the inter-
lots Nos.
thes with
the station
north-east-
the north-
ce south-
the same
er of the
along the
ne north-
h-easterly
t angle of
Baunis-
line there-
; thence
outherly,
west line
erguson;
irect lim-
lot 59 to
3, in the
ounty of
g at the
lor's east
follow
orth-east-
Bleakney
thereof;
to the
anted to
an in-
he south-
George
his west
Santiel
e-easterly
orth-east
; thence
to the
y grant;
t named
e same;
line to
St-eves'
ct No. 1;
adary to
stream to
ool Dis-
albury,
g, at the
Peter R.
No. 2;
said bor-
norther-

ly along said County line to a point in range with the north line of lots Nos. 134, 136, 138, and others on the Bannister road; thence west in a direct course to and along the north line of said lots and along the northern bounds of other lots on said road to the eastern line of lot No. 2, granted to Frederick Steeves; thence southerly to the north-east corner of lands granted to Charles Cain; thence along the north boundary of last named lands to the Martin Gay grant; thence south-westerly along the southern side line thereof to its south corner; thence directly on an imaginary line to the north corner of the Peter R. Inches grant to the place of beginning.

LOWER POLLETT RIVER.—*School District No. 5, in the Parish of Salisbury, in the County of Westmorland.*

Bounded as follows:—Beginning at the Albert County line at the point of its intersection with the north boundary of District No. 4, and running westerly along said boundary to the north-east corner of lot No. 3 granted to Charles Cain; at the southern boundary of the Martin Gay grant; thence north-easterly along said boundary to Pollett River; thence down stream to the Petiteodiat river, but diverging therefrom to include the lands of the late Jacob Jones, jr.; thence down last named river to Duncan McFee's upper line; thence south-easterly along said line or its prolongation to the Albert County line; thence southerly along said County line to the place of beginning.

PRIDE OF THE PLAINS.—*School District No. 7, in the Parish of Salisbury, in the County of Westmorland.*

Bounded as follows:—Beginning at the intersection of the most northern line of lot H, granted to St. Andrew's Church, with the eastern line of the grant to Robert Russell, on the border of District No. 5, and following said border easterly to the Moncton parish line; thence northerly along said Parish line to Kent County line; thence westerly along said County line till it meets the north prolongation of the line of the lands on which George A. [redacted] resides; thence south along last named line so prolonged to its south extremity; thence along a direct line south-easterly to the north angle of land granted to George Cochran; thence south-easterly along said Cochran's north-eastern side line to the north boundary of the North River lots; thence north-easterly along said boundary till it strikes the western line of lands granted to William and George Taylor; thence southerly along last named

line to the south-west angle of same lands; thence north-easterly along their southern boundary to the south-east angle thereof; thence following east an imaginary line to the north-west corner of lands granted to Robert Russell; thence north-easterly to the north-east angle of the same; thence southerly along the east line thereof to the place of beginning.

FREDERICTON ROAD.—*School District No. 8, in the Parish of Salisbury, in the County of Westmorland.*

Bounded as follows:—Beginning on the Fredericton road, at the south extremity of George A. Cochran's west line, and following said line prolonged north to Kent County line; thence westerly along said County line till it meets the north prolongation of the west line of Lot 15 on Fredericton road, granted to James Malone; thence south along said prolongation and said line, prolonged also south to the rear of the first tier of lots on said road; thence east along said rear to the north-east corner of James O'Neil's lands, thence south along the east side line of the same to the rear of the second tier of lots; thence east along said rear boundary to the south-east corner of the lands of John Keenan; thence north to the rear line of the first tier of lots south of said road; thence easterly along the southern bounds of last named lots to the north angle of the lands of the late George Cochran; thence north-westerly, in a direct line to the place of beginning.

HAREWOOD.—*School District No. 9, in the Parish of Salisbury, in the County of Westmorland.*

Bounded as follows:—Beginning at the north extremity of the west line of land granted to James Quailey and running north along its prolongation to Kent County line; thence westerly along said County line to Queen's County line; thence southerly along last named line till it strikes the west angle of lot 37, granted to William C. Steeves; thence north-easterly along said Steeves' northern line to his north angle; thence following a direct line to the south-west angle of lot 150 south of Fredericton road, granted to Lewis Rivers; thence east along the southern bounds of the first tier of lots south of the Fredericton road to the place of beginning. *Ordered, April 4th, 1874, that the foregoing boundary be changed as follows:—The properties of all the residents on the north side of Canaan River, also the properties of Oliver Brown and Edwin Hagarty, be excluded from District No. 9.*

4
SCOTCH. — *School District No. 10, in the Parish of Salisbury, in the County of Westmorland.*

Bounded as follows:—Beginning at the point of intersection of the east line of the grant to Robert Russell, in the boundary of Districts No. 7, and following the various courses of said boundary westerly to the south-east corner of lot 15 granted to Alexander Kennedy; thence westerly in a direct line to North River Bridge, at Jehiel Hoar's; thence southerly in a direct line to John Gay's north-east corner; thence southerly along the various courses of his eastern boundary, and along the eastern boundary of the grant to S. L. Tilley, to the south-east corner thereof; thence following in a direct imaginary line to the south-east corner of the grant to William E. Ross, on the border of the Martin Gay grant; thence north-easterly to the west line of Martin Beck, jr., on the boundary of District No. 7; thence along said boundary to the place of beginning.

PLATFORM.—*School District No. 11, in the Parish of Salisbury in the County of Westmorland.*

Bounded as follows:—Beginning at Martin Beck's west line, on the bank of the Peticoodiac river, and running up stream to the Pollet River; thence up the Pollet river to Edward Haesty's south-west line; thence following an imaginary line to exclude the lands of the late Jacob Jones, jr., and strike the road leading from the Platform to Pollet river on the southern boundary of John Negus' lands; thence running south 56° west, or parallel to the south west line of the Martin Gay grant to Daniel Holme's east line; thence along his east line to his rear line; thence in a direct line to the south-west corner of Samuel Crosthwaite's land; thence northerly along his western line prolonged to the north-west corner of Thomas Crosthwaite's land; thence along an imaginary line to the west corner of lands granted to S. L. Tilley; thence north-easterly along the northern boundary of said Tilley grant to the north corner thereof, the boundary of District No. 10; thence following the various courses of said boundary, first southerly, then easterly to the west line of Martin Beck, junr.; thence southerly along the said line to the place of beginning.

WHEATON SETTLEMENT.—*School District No. 12, in the Parish of Salisbury, in the County of Westmorland.*

Bounded as follows:—Beginning at the south-east corner of lands occupied by

John Gay, and running thence northerly along his eastern line and prolonged to the bridge across the North River near J. Hoar's; thence westerly in a direct line to the north corner of lands granted to W. D. Murray; thence westerly by an imaginary line to the north-west corner of Jas. Morton's grant; thence southerly along Morton's western line and its prolongation to south-west corner of lands granted to A. E. Killam; thence easterly in a direct line to the north-east corner of Thos. Crosthwaite's land on the boundary of District No. 11; thence easterly along the said boundary to the south-east corner of John Gay's land, the place of beginning.

LEWIS MOUNTAIN.—*School District No. 13, in the Parish of Salisbury, in the County of Westmorland.*

Bounded as follows:—Beginning at the north-west line of lot 1 on the North River granted to Daniel Wheaton, and running thence easterly along the various courses of the boundary of District No. 12 to the bridge across the North river near J. Hoar's; thence on a direct line to the south-east line of lands granted to Alexander Kennedy; thence north-easterly along the western line thereof to his north-east line; thence south-westerly along the northern line of the same prolonged to the south-east line of lands granted to George Cochran; thence north-westerly to his north line; thence westerly along the southern bounds of the lots south of and fronting on the Fredericton road to the west side line of land granted to John Keenan; thence southerly on a direct line to the south-east line of lot 35 granted to Daniel Rogers; thence southerly in a direct course to the north-west line of lot 1 aforesaid, the place of beginning.

CONSTANTINE.—*School District No. 14 in the Parish of Salisbury in the County of Westmorland.*

Bounded as follows:—Beginning at north-west line of lot K, fronting on the North River and granted to James Morton, and running thence easterly along an imaginary line to the north-west line of lot No. 1, granted to Daniel Wheaton, boundary of District No. 13, and following said boundary northerly to the north-east angle of lot 23, granted to Daniel Rogers; thence west to the south-east angle of lot 14, granted to James O'Neill; thence north to the rear of the first tier of lots south of the Fredericton road; thence west along said rear to the north-east angle of lands granted to Benjamin Alward; thence to his south-east corner; thence south-east along an imaginary line to the south-west

angle of
McA
ary li
granted
easterl
east an
imagin
STREVI
18,
Cour
Boun
north-
Killam
and ra
the nor
erly al
north
along
corner
thence
longed
thence
corner
Fee, o
Samue
north-
his sou
an ite
of lot
bound
the va
the pla
Fawc
in th
of
Bun
North
Morton
No. 15
wester
thence
S. H
south
dary;
of Tho
ary li
the no
to Joh
from
thence
line of
rear
along
and it
ner of
thence
land t
line to
of the
North
the s
place

angle or corners of lands granted to Hugh McAdam; thence easterly along an imaginary line to the north-east angle of lot 31, granted to Allan Killam; thence south-easterly along his eastern line to his south-east angle; thence south-easterly along an imaginary line to the place of beginning.

STEVES SETTLEMENT.—*School District No. 18, in the Parish of Salisbury, in the County of Westmorland.*

Bounded as follows:—Beginning at the north-east corner of lot 9, granted to Allan Killam, on the road to Butternut Ridge, and running westerly along said road to the north-west corner thereof; thence southerly along his western side line to the north line of block 17; thence westerly along last named line to the north-west corner of lot 34, granted to Amos Hicks; thence southerly along his west line prolonged to Hiram Wilson's south corner; thence north-easterly to the north-eastern corner of lot 26, granted to Angus McFee, on the south line of lands granted to Samuel Holstead, in block 17; thence north-east along Holstead's south line to his south-east corner; thence easterly along an imaginary line to the north-west corner of lot K, granted to James Morton, on the boundary of District No. 14; thence along the various courses of said boundary to the place of beginning.

FAWCEY HILL.—*School District No. 17, in the Parish of Salisbury, in the County of Westmorland.*

Bounded as follows:—Beginning at the North River on south-west corner of J. Morton's grant, on boundary of District No. 12, and running northerly along his western line to his north-west corner; thence in a direct line to eastern corner of S. Holstead's grant; thence along his southern boundary to his western boundary; thence in a direct line to the corner of Thos. Hope's land, thence by an imaginary line to a point sixty rods westerly from the north-westerly corner of lands granted to John G. Humphreys, on road leading from North River to Butternut Ridge; thence southerly and parallel to the side line of the John J. Burnham grant to the rear line of the same; thence easterly along the southern boundary of said grant and its prolongation to the south-east corner of land owned by Hiram Humphreys; thence along the eastern side line of said land to the Ridge road; thence in a direct line to a point where the western side line of the John Garland grant crosses the North River; thence northerly following the several courses of said river to the place of beginning.

INTERVALE.—*School District No. 19, in the Parish of Salisbury, in the County of Westmorland.*

Bounded as follows:—Beginning at the south corner of lands granted to Amasa E. Killam, on boundary of District No. 12; thence northerly along his western line to the North River; thence southerly along said river on the boundary of No. 17 to the south-east corner of land owned by Hiram Humphreys; thence in a direct line to the south corner of the David Bleakney grant; thence easterly along the base line of said grant on the boundary of District No. 3, and its several courses to the southern corner of lands granted to Allan Godard; thence north-easterly in a direct line to the south-east corner of the grant to George Jones; thence northerly along the eastern line of said lot and its prolongation to the north-west corner of S. Crosswithe's land; thence in a direct line to the south corner of lands granted to A. B. Killam, the place of beginning.

KINNEAR SETTLEMENT.—*School District No. 19, in the Parishes of Salisbury and Havelock, in the Counties of Westmorland and Kings.*

Bounded as follows:—Beginning at the north-west line of Lot 17, granted to Amos Hicks, and following thence his south-western side line prolonged southerly to the most eastern angle of Lot 23, granted to Timothy Murray on the border of District No. 18; thence following said border in its various courses southerly to the south-east line of Lot 2, granted to John J. Burnham; thence west along the south line of said Lot No. 2, prolonged to the east side line of Lot 31 granted to Daniel L. Keith; thence south to the south-east line of the same; thence south-westerly along an imaginary line to the north-east line of Lot 20, granted to C. W. Stockton; thence along the northern line of last named lot to the south-west line of Lot 3, granted to John Alward, in Havelock; thence north on a direct line to the north-west line of Lot 80, granted to Alfred Wears; thence north-east along the northern boundary of said lot No. 80 to the north-east line of the same; thence north-easterly along an imaginary line directly to the King's County line on the road leading to Butternut Ridge; thence northerly along said County line to the south end line of Lot 4, granted to James Price; thence easterly along last named line prolonged to place of beginning.

The families in King's County embraced within above bounds are excluded from No. 19.

GLENVALE.—*School District No. 20, in the Parish of Salisbury, in the County of Westmorland.*

Bounded:—Beginning on King's County line at the south end of the Stockton grant and running east along said grant to the west line of a lot of land occupied by the Rev. D. Bleakney; thence south to the extremity of said lot; thence east to the Plaster rock; thence along said rock to the west line of a lot of land claimed by Hugh Davidson, thence south two hundred rods; thence east to the division line between the Dunlop farm, so called, and Uz Bleakney, and along said division line to the south-east corner of the Dunlop farm; thence north along the east line of said farm to its north-east corner; thence westerly along the boundary of District No. 19 to the King's County line; thence south along said County line to the place of beginning.

ALWARD.—*School District No. 21, in the Parish of Salisbury, in the County of Westmorland.*

Bounded:—Beginning at the north-east corner of land occupied by George Russell on the boundary of District No. 14 and running southerly along said boundary to the north-west line of land granted to Hugh McAdam on the road leading to Butternut Ridge; thence westerly along said road to the north-east line of land granted to Joseph Chapman; thence southerly along the eastern line thereof to the south-east line of the same; thence along said southern line and along the northern line of block 17 to the southwest corner of Daniel Keith's farm, including the property of George E. Keith; thence northerly along the said Daniel Keith's western line to the boundary of District No. 15; thence easterly along said boundary line to the place of beginning.

SALISBURY.—*School District No. 24, in the Parishes of Salisbury, Moncton and Coverdale, in the Counties of Westmorland and Albert.*

Bounded:—Beginning on the Albert County line at the point of its intersection with the north boundary of District No. 5, and running thence north-westerly to the Petitcodiac river; thence up stream to the upper line of the lands of Martin Beck, jr.; thence northerly to his rear; thence north-westerly along a direct imaginary line to the point of intersection of the most north-eastern line of lands granted to St. Andrew's Church, with the eastern line of lands granted to Robert Russell, and running thence easterly along the north-east boundary of said Church

grant, prolonged to the west line of W. B. Killam's grant; thence southerly along said west line to the south line thereof; thence easterly along last named line prolonged to meet the eastern side line (or its north prolongation) of the lands of the late Jacob Wortman; thence southerly along last named line to the Petitcodiac river; thence up stream to the mouth of Coverdale river; thence up last named river to the line between the lands of the late Ralph Mitten, and John Leeman; thence along said line or its prolongation to the Albert County line; thence along said County line to the place of beginning.

Border Districts.

HICKS.—*School District No. 15, in the Parishes of Salisbury and Havelock, in the Counties of Westmorland and Kings.*

Bounded as follows:—Beginning at the south-east corner of lot M. granted to Benjamin Alward on the boundary of District No. 14, and running southerly along said boundary to the north-east corner of a lot of land occupied by George Russell; thence westerly by an imaginary line between the Butternut Ridge and Hick's settlement roads to the easterly line of land owned by Amos Hicks; thence southerly along said line to the south-east corner of said land; thence westerly along the south line of said land to the south-west corner of the same; thence northerly along a road leading to the Hick's settlement to the south-east corner of land owned by Elias Keith; thence westerly, crossing the King's County line to the south-west corner of said land; thence northerly along Elias Keith's and Rufus Hick's westerly line to the north-west corner of land owned by the said Rufus Hicks; thence easterly along the said Rufus Hick's north line to the King's and Westmorland County line; thence northerly along said County line to the north-west line of lot 37 granted to William C. Steeves; thence easterly along the north line of lot 37 to the north-east line thereof; thence easterly by a direct imaginary line to the south-west corner of lot M. granted to Benjamin Alward; thence along said Benjamin Alward's southern line to the place of beginning.

ROCKLAND.—*School District No. 22, in the Parishes of Salisbury and Havelock, in the Counties of Westmorland and Kings.*

Bounded:—Beginning on King's County line at the south end of the Stockton grant and running east along said grant to the west line of a lot of land occupied by the

Rev. I
tremit
Plaste
west l
David
thence
the D
ney, a
north
thenc
his so
an im
of Jar
thenc
line o
longa
H. S
last
corn
therl
same
boun
thenc
the

ELM

P

B

la

B

trp

grat

the

lot

nor

40

the

lian

to J

ner

the

east

line

on

ed

lan

sou

to

W

th

gi

S

H

B

Rev. D. Bleakney; thence south to the extremity of said lot; thence east to the Plaster rock; thence along said rock to the west line of a lot of land claimed by Hugh Davidson; thence south two hundred rods; thence east to the division line between the Dunlop farm, so called, and Uz Bleakney, and along said division line to the north-east corner of Uz Bleakney's farm; thence south along Bleakney's east line to his south-east corner; thence westerly by an imaginary line to the north-west angle of James Price's land on the Anagance; thence southerly along the western side line of said Price's land to the eastern prolongation of the southern line of the Geo. H. Smith Grant; thence westerly along last mentioned line to the south-west corner of the said Smith grant; thence northerly to the north-west corner of the same; thence easterly along the north boundary of said grant to the County line; thence northerly along the County line to the place of beginning.

ELMWOOD—*School District No. 23, in the Parishes of Salisbury, Havelock and Brunswick, in the Counties of Westmorland, Kings and Queen's.*

Bounded as follows:—Beginning at the south extremity of the west line of Lot No. 39, granted to John Price; thence east along the base line to the south-east corner of lot No. 40 granted to Seth Bryant; thence north along the side line of said lot No. 40 to west angle of lot 5; thence east along the base lines of lot W. granted to William Hughson, and of lot No. 44 granted to James A. Keith to the south-east corner of last named lot; thence north along the east side line of said lot to its north-east corner and prolonged to Kent County line; thence westerly along said County line to Queen's County line; thence south on said line to the base line of land granted to Ebenezer Ryder; thence west to lands owned by S. S. Stockton; thence south to the Canaan River; thence west to the line between Charles Keith and Wm. Perry; thence south to the base line; thence prolonged east to the place of beginning.

PARISH OF SHEDIAC.

ST. ANDREWS (A).—*School District No. 1, in the Parish of Shediac, in the County of Westmorland.*

Bounded as follows:—Extends from Hippolyte Burk's easterly line to Simon Burk's west line, embracing all the St.

Andrews lots within said bounds; also all the lots along the Joe Burk road from D. Melancon's south line; also, the second tier of lots extending from the Botsford parish line to the old St. Andrews road.

ST. ANDREWS (B).—*School District No. 2, in the Parish of Shediac, in the County of Westmorland.*

Bounded as follows:—Extends westerly along the road from Simon Burk's west line to the Kinnear road, and embraces all the lands along said road, within said bounds; together with the lots or lands between Peter Belliveau's east line and said road.

TEDISH.—*School District No. 3, in the Parish of Shediac, in the County of Westmorland.*

Bounded as follows:—Extends westerly along the Shore road from the west line of the lands occupied by Pacific and Martin Le Blanc, to Andre Gould's east line, embracing all the shore lots within said bounds.

KOUCHIBOUQUAC.—*School District No. 4, in the Parish of Shediac, in the County of Westmorland.*

Bounded as follows:—Extends westerly along the shore road from Andre Gould's east line to the north-east corner of the lands of Calixte Legere, jr., embracing all the shore lots so far; and also, southerly along the Kinnear road to Doithe Legere's south line, embracing the farms to that extent on last named road also.

ABOUJAGAN SOUTH.—*School District No. 5, in the Parish of Shediac, in the County of Westmorland.*

Bounded as follows:—Extends northerly along the Aboujagan road from Thomas Godet's south line, and said line produced to the rear of range of lots west of and bordering on the Aboujagan river to the north lines of David Cormier and Hippolyte Legere on said road, and to Calixte LeBlanc's north-west line on the west side of said river. The district embracing all the farms on said road, and on said river, within said bounds.

ABOUJAGAN NORTH.—*School District No. 6, in the Parish of Shediac, in the County of Westmorland.*

District No. 6 extends northerly along the Aboujagan roads, embracing all the farms or lands on said road from District No. 5 to the north lines of the lands of Thomas Gothro, and Charles Legere. No. 6 extends also easterly along the Kinnear

road from its junction with the main Aboujagan road to Thaddi Hebert's easterly line, embracing the farms to that extent on said Kinnear road.

BARACHOIS.—*School District No. 7, in the Parish of Shediac, in the County of Westmorland.*

District No. 7 extends northerly along the Aboujagan road, from District No. 6 to the shore road, embracing all the lands on said road, within said bounds, together with the farms of Damien Theriault, Dominique Cormier, John Roberts, Thomas Cormier, Thaddi Wallett, and Ted Richard, on second tier of lots. No. 7 extends also westerly along the shore road from the north-east angle of the land of Calixte Legere, jr., to the westerly line of lands owned by Thomas E. Smith and Sons, at the fishing road, so called, embracing the first and second tier of lots from the shore within said bounds.

BARACHOIS WEST.—*School District No. 8, in the Parish of Shediac, in the County of Westmorland.*

Bounded as follows:—Extends westerly along the shore road from District No. 7 to the east boundary of No. 19.

SHEDIAC STATION.—*School District No. 10, in the Parish of Shediac, in the County of Westmorland.*

Bounded:—Northerly by Shediac Bay; easterly by the east line of Glebe land commencing at the harbor and following said line southerly till it strikes the Barachois Road; thence along said road westerly to the west line of Church lands; thence southerly to rear of said lands; thence westerly along the rear line to the Scoudouc river; thence northerly along said river to the mouth of the Scott Brook; thence following said brook to a point half a mile west of the road leading to Dorchester; thence northerly to the north line of Philip Chapman's land; thence easterly along said line to the harbor.

SHEDIAC.—*School District No. 11, in the Parish of Shediac, in the County of Westmorland.*

Bounded as follows:—Beginning at the point where Aime Richard's south line meets the bay shore, and running westerly along said line prolonged to the east line of the Grant to Isaac Hache and others; thence southerly along said east line to the south side of lot No. 8 of said grant; thence directly to the east boundary of Edward Casey on the Moneton road; thence southerly along said east line to the north line

of Charles Dickey's land purchased from Hon. D. Hannington; thence easterly along the boundary of District No. 10 to the harbor; thence northerly along the bay shore to the place of beginning.

DORCHESTER ROAD.—*School District No. 12, in the Parish of Shediac, in the County of Westmorland.*

Bounded as follows:—Beginning at Johnson's bridge, so called, and thence following the brook to the Scoudouc river, and up said river, passing Bevere's mill, to the late Thomas Elliot's south line, or said line produced; thence westerly along said line, and (crossing Dorchester road) to the rear of range of lots situated on said road; thence northerly along said rear to the north-west corner of Charles Dickey's land, purchased from Hon. D. Hannington; thence easterly along said Dickey's north line to the place of beginning.

SCOUODOC NORTH.—*School District No. 13, in the Parish of Shediac, in the County of Westmorland.*

Bounded as follows:—North by the late Thos. Elliott's south line produced to Scoudouc river; east by an imaginary line drawn thence directly to intersect the prolongation of Simon Burk's north line, at a point three miles east of the Dorchester road; south by said Simon Burk's north line so produced, and produced also westerly to the rear of the second tier of lots west of said road; west by the rear boundaries of said second tier of lots running northerly and intersecting the west prolongation of the south line of the late Thomas Elliott aforesaid.

SCOUODOC SOUTH.—*School District No. 14, in the Parish of Shediac, in the County of Westmorland.*

Bounded as follows:—North by District No. 13; east by an imaginary line drawn directly from the south-east angle of District No. 13, to a point in Moses Leger's south line (produced easterly) three miles from the Dorchester road, including the Malakoff settlement, so called; south by said Moses Leger's south line, produced also westerly, to the rear of the meadow lots; west by the rear line of said meadow lots running northerly to Simon Burk's north line produced.

PAINSEC (A).—*School District No. 15, in the Parish of Shediac, in the County of Westmorland.*

Bounded as follows:—District No. 15, A, extends westerly along the Painsec road, from the east boundary of Daniel

Pel
bra
bou
rou
nor
sou
call
Mo
C
B
exte
from
duce
dary
side
SHE
17
-C
Bo
Bay
Rev.
ning
to th
prola
ern l
ern l
trem
line o
er's
east
and a
line;
rear
direct
Richa
of sai
along
ning.
SHE
13,
Co
Bou
embra
the S
from
Renbe
side f
line to
cludin
north
far we
Casim
Storo
No.
the
Bou
McLea
erly fo

Pelerin to Fred Gould's westerly line, embracing, within said bounds and said bounds produced, all the lands on said road; together with one tier of lots lying north of these, and two tiers of lots lying south, to include the Lake settlement, so called.

MONCTON ROAD.—*School District No. 16, in the Parish of Shediac, in the County of Westmorland.*

Bounded as follows:—District No. 16 extends westerly along the Moncton road from Edward Casey's easterly line (produced northerly) to Moncton Parish boundary, embracing one tier of lots on each side of said road, within said bounds.

SHEDIAC BORDER.—*School District No. 17, in the Parish of Shediac, in the County of Westmorland.*

Bounded as follows:—Beginning on the Bay shore at the eastern extremity of Rev. Cyrille Bussard's south line, and running westerly along said line, prolonged to the point of its intersection with the prolongation of Charles Babeneau's western line; thence southerly along said western line (so prolonged) to its southern extremity; thence easterly along the rear line of the block to Joseph Paschal Poirier's east line; thence southerly along said east line to the Shediac River; thence up and across said river to Mark Poirier's east line; thence along last named line to his rear line; thence along an imaginary line directly to the south-west corner of Aime Richard's lot; thence along the south line of said lot to the Bay shore; thence north along the Bay shore to the place of beginning.

SHEDIAC RIVER.—*School District No. 18, in the Parish of Shediac, in the County of Westmorland.*

Bounded as follows:—District No. 18 embraces one tier of lots on each side of the Shediac River. On the south side from Mark Poirier's east line upwards to Reuben Gallant's west line; on the north side from Joseph Paschal Poirier's east line to the widow Tidd's west line, including also the second tier of lots on the north side along the McDougall road, as far westerly as to include the lands of Casimer Fountain on this latter road.

SCOTH SETTLEMENT.—*School District No. 20, in the Parish of Shediac, in the County of Westmorland.*

Bounded:—Beginning at the mouth of McLean's Brook, and running north-westerly following the boundary line, of Cale-

donia District, No. 23, in its various courses to the north-west corner of land owned by Allen D. Murray; thence by an imaginary line to the north-west corner of land owned by Donald Duff; thence east to the north-east corner of land owned by John McDougall, Senior; thence south following John McDougall's east line and its prolongation to Coll McDougall's south line prolonged; thence south-westerly by an imaginary line including lands belonging to John McDougall and Duncan McDougall to the place of beginning.

PARISH OF WESTMORLAND.

PORT ELGIN.—*School District No. 1, in the Parishes of Westmorland and Botsford, in the County of Westmorland.*

Bounded:—East by Timber River; south by Bay Verte shore and the old Fort Moncton road as far westerly as the north-eastern line of Cyrus Chappell's lands; thence north-westerly by said line and said line produced two miles; thence north-easterly by an imaginary line drawn to Oxley Brook at the Post road; thence by an imaginary line drawn to the head of the west branch of Timber river aforesaid.

BAIE VERTE.—*School District No. 2, in the Parish of Westmorland, in the County of Westmorland.*

Bounded:—North-easterly by District No. 1, south-easterly by Baie Verte shore and the south-east line of lands occupied by James Scott to its intersection with the Tidnish road; thence south-westerly by said road as far as to the south-east line of the lands of Joshua Chappel; thence by last named line produced to the south-west line of lands occupied by John Lanchester; thence by last named line produced to the distance of two miles beyond Bay Verte road which it crosses; thence by an imaginary line drawn north-easterly to include the lands of James Brown on Coburg road; thence by an imaginary line drawn directly to the west angle of District No. 1.

TIDNISH.—*School District No. 3, in the Parish of Westmorland, in the County of Westmorland.*

Bounded:—North-westerly by District No. 2; easterly by Bay Verte shore; south-easterly by the Province boundary, embracing within these bounds, all the residents and farms on both sides of the Tidnish and Uniack roads.

BAIE VERTE ROAD.—*School District No. 4 in the Parish of Westmorland, in the County of Westmorland.*

Bounded:—Easterly by Districts Nos. 2 and 3, and the Province boundary; south-westerly by the north-east line of the estate of Charles Dobson's land, and said line produced north-westerly to the rear of the third tier of lots from the Bay Verte road; thence northerly by an imaginary line drawn directly to the west angle of District No. 2.

JOLICURE.—*School District No. 5, in the Parish of Westmorland, in the County of Westmorland.*

Bounded:—Northerly by the north-east lines of Charles Dobson's land and said lines prolonged; easterly by the Nova Scotia boundary; southerly by Alfred Tingley's upper line till it strikes the Point de Butte road, thence by said road to Busby Oulton's southern boundary, thence by said boundary to the An Lac Creek, thence by said Creek down to John Smith's upper line, thence by last named line prolonged to Sackville parish line; thence by an imaginary line drawn directly to the late Martin Oulton's west corner; thence along said Oulton's south west line to the road, and along the road southerly to the south corner of land owned by Ralph Oulton, thence along the south-east line of said land and its prolongation to the Brooklyn road, so called, thence by an imaginary line running directly to the west corner of District No. 4.

WELLS.—*School District No. 6, in the Parish of Westmorland, in the County of Westmorland.*

Bounded:—Northerly by District No. 5 easterly by the Missisquash (Province line) as far down as Weston Jones' lower line, southerly by said line and its prolongation north-westerly (including Joseph Parson's property) to the Point de Butte road, thence by a line running northerly and westerly following Joseph H. Dixon's line to David Mitten's north-east corner, and thence in a direct line north-westerly to the Aboudeau on the An Lac Creek; thence westerly by said creek upwards to District No. 5.

TRENHOLM'S CORNER.—*School District No. 7, in the Parish of Westmorland, in the County of Westmorland.*

Bounded:—Northerly by Districts 5 and 6; easterly by the Province boundary; southerly by Richard Carter's lower boundary prolonged to Sackville parish line; westerly by last named line till it

meets the prolongation of John Smith's upper (north-easterly) line.

WESTMORLAND POINT.—*School District No. 8, in the Parish of Westmorland, in the County of Westmorland.*

Bounded:—Northerly by District No. 7, i. e., Richard Carter's lower line prolonged to Sackville parish line; easterly by the Province line; south by Cumberland Basin, and westerly by the An Lac Creek.

MIDGIC ROAD.—*School District No. 9, in the Parish of Westmorland, in the County of Westmorland.*

Bounded:—Beginning at Benjamin Tingley's south-west corner on the Midgic Road, and following his south line to the rear of his lot; thence in a northerly direction along the Sackville parish line to the north corner of land owned by Lorang Niles; thence easterly following the northern bound of said Niles' land and the northern bound of John Wells' land to the Midgic road; thence crossing Midgic road to a point where the Botsford Parish line strikes said road; thence easterly along the Botsford Parish line to the east corner of land owned by Pollett Leahere; thence by an imaginary line embracing the land owned by the said Pollett Leahere and lands of estate of the late William Lowder to the south corner of Stephen Peacock's land; thence along said Peacock's south-west boundary to the Midgic road, the place of beginning.

CENTREVILLE.—*School District No. 10, in the Parish of Westmorland, in the County of Westmorland.*

This District extends along the Midgic road from Benjamin's Tingley's southerly line to the northerly line of Daniel Fillmore, embracing one tier of lots on both sides of said road.

BROOKLYN.—*School District No. 11, in the Parish of Westmorland, in the County of Westmorland.*

Bounded:—Beginning at Daniel Fillmore's north-east corner and running south-easterly by an imaginary line to Miles Finney's north corner; thence following said Finney's north-east line to the Big Lake, so called; thence following said lake in a south-westerly direction to the late Martin Oulton's west corner; thence along said Oulton's south-west line to the road leading from Jolicure; thence along said road southerly to the south corner of land owned by Ralph Oulton; thence along the south-east line of said Oulton's land and

its prolongation to the Brooklyn road; thence along said road northerly to Wheaton's Mill: thence by an imaginary line to Daniel Fillmore's north-east corner, the place of beginning.

all dyked marsh lands in the Parish of Sackville, owned by residents respectively of School Districts Nos. 5, 6, 7, and 8, in the Parish of Westmorland be attached to, and included in, the District in which such resident lives.

ORDERED, December 18th, 1873, that

John Smith's
District No
land, in the

District No. 7,
be prolonged
erly by the
rland Basin,
reek.

No. 9, in
the County

Benjamin
the Midgie
line to the
ertherly di-
ish line to
by Lorang
g the north-
d and the
land to the
Midgie road
Parish line
erly along
east corner
ere; thence
g the land
eshere and
am Lowder
Peacock's
k's south-
road, the

No. 10, in
the County

the Midgie
southerly
aniel Fill-
on both

11, in the
County of

aniel Fill-
running
y line to
nce follow-
to the Big
g said lake
the late
ence along
the road
long said
er of land
along the
land and

