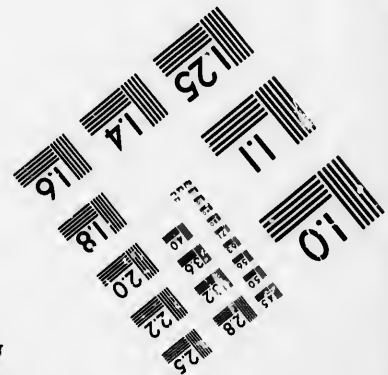
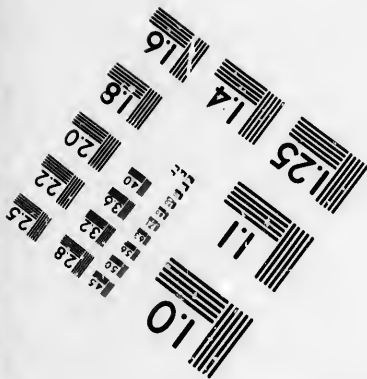
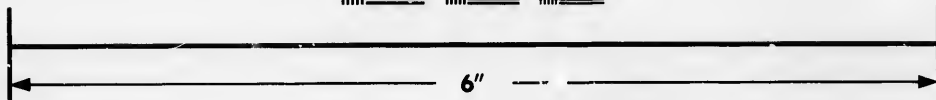
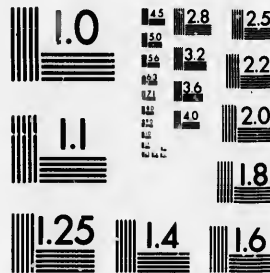


**IMAGE EVALUATION
TEST TARGET (MT-3)**



**Photographic
Sciences
Corporation**

23 WEST MAIN STREET
WEBSTER, N.Y. 14588
(716) 872-4503

**CIHM/ICMH
Microfiche
Series.**

**CIHM/ICMH
Collection de
microfiches.**



Canadian Institute for Historical Microreproductions / Institut canadien de microreproductions historiques

© 1985

Technical and Bibliographic Notes/Notes techniques et bibliographiques

The Institute has attempted to obtain the best original copy available for filming. Features of this copy which may be bibliographically unique, which may alter any of the images in the reproduction, or which may significantly change the usual method of filming, are checked below.

L'Institut a microfilmé le meilleur exemplaire qu'il lui a été possible de se procurer. Les détails de cet exemplaire qui sont peut-être uniques du point de vue bibliographique, qui peuvent modifier une image reproduite, ou qui peuvent exiger une modification dans la méthode normale de filmage sont indiqués ci-dessous.

- Coloured covers/
Couverture de couleur
- Covers damaged/
Couverture endommagée
- Covers restored and/or laminated/
Couverture restaurée et/ou pelliculée
- Cover title missing/
Le titre de couverture manque
- Coloured maps/
Cartes géographiques en couleur
- Coloured ink (i.e. other than blue or black)/
Encre de couleur (i.e. autre que bleue ou noire)
- Coloured plates and/or illustrations/
Planches et/ou illustrations en couleur
- Bound with other material/
Relié avec d'autres documents
- Tight binding may cause shadows or distortion along interior margin/
La reliure serrée peut causer de l'ombre ou de la distorsion le long de la marge intérieure
- Blank leaves added during restoration may appear within the text. Whenever possible, these have been omitted from filming/
Il se peut que certaines pages blanches ajoutées lors d'une restauration apparaissent dans le texte, mais, lorsque cela était possible, ces pages n'ont pas été filmées.
- Additional comments:/
Commentaires supplémentaires:

- Coloured pages/
Pages de couleur
- Pages damaged/
Pages endommagées
- Pages restored and/or laminated/
Pages restaurées et/ou pelliculées
- Pages discoloured, stained or foxed/
Pages décolorées, tachetées ou piquées
- Pages detached/
Pages détachées
- Showthrough/
Transparence
- Quality of print varies/
Qualité inégale de l'impression
- Includes supplementary material/
Comprend du matériel supplémentaire
- Only edition available/
Seule édition disponible
- Pages wholly or partially obscured by errata slips, tissues, etc., have been refilmed to ensure the best possible image/
Les pages totalement ou partiellement obscurcies par un feuillet d'errata, une pelure, etc., ont été filmées à nouveau de façon à obtenir la meilleure image possible.

This item is filmed at the reduction ratio checked below/
Ce document est filmé au taux de réduction indiqué ci-dessous.

10X	14X	18X	22X	26X	30X
<input type="checkbox"/>	<input type="checkbox"/>	<input type="checkbox"/>	<input checked="" type="checkbox"/>	<input type="checkbox"/>	<input type="checkbox"/>
12X	16X	20X	24X	28X	32X

The copy filmed here has been reproduced thanks to the generosity of:

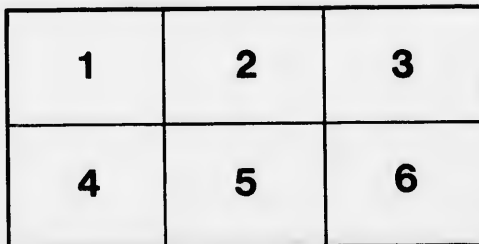
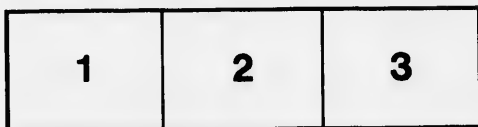
Douglas Library
Queen's University

The images appearing here are the best quality possible considering the condition and legibility of the original copy and in keeping with the filming contract specifications.

Original copies in printed paper covers are filmed beginning with the front cover and ending on the last page with a printed or illustrated impression, or the back cover when appropriate. All other original copies are filmed beginning on the first page with a printed or illustrated impression, and ending on the last page with a printed or illustrated impression.

The last recorded frame on each microfiche shall contain the symbol \rightarrow (meaning "CONTINUED"), or the symbol ∇ (meaning "END"), whichever applies.

Maps, plates, charts, etc., may be filmed at different reduction ratios. Those too large to be entirely included in one exposure are filmed beginning in the upper left hand corner, left to right and top to bottom, as many frames as required. The following diagrams illustrate the method:



L'exemplaire filmé fut reproduit grâce à la générosité de:

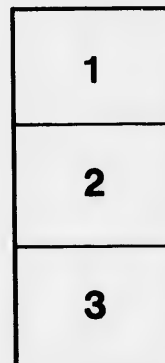
Douglas Library
Queen's University

Les images suivantes ont été reproduites avec le plus grand soin, compte tenu de la condition et de la netteté de l'exemplaire filmé, et en conformité avec les conditions du contrat de filmage.

Les exemplaires originaux dont la couverture en papier est imprimée sont filmés en commençant par le premier plat et en terminant soit par la dernière page qui comporte une empreinte d'impression ou d'illustration, soit par le second plat, selon le cas. Tous les autres exemplaires originaux sont filmés en commençant par la première page qui comporte une empreinte d'impression ou d'illustration et en terminant par la dernière page qui comporte une telle empreinte.

Un des symboles suivants apparaîtra sur la dernière image de chaque microfiche, selon le cas: le symbole \rightarrow signifie "A SUIVRE", le symbole ∇ signifie "FIN".

Les cartes, planches, tableaux, etc., peuvent être filmés à des taux de réduction différents. Lorsque le document est trop grand pour être reproduit en un seul cliché, il est filmé à partir de l'angle supérieur gauche, de gauche à droite, et de haut en bas, en prenant le nombre d'images nécessaire. Les diagrammes suivants illustrent la méthode.



100

P. C. ALLAN, Wholesale and Retail Bookseller, STATIONER, &C.,

POST OFFICE, CHATHAM, C. W.

TAKES this opportunity of informing the Public that he has just imported from England a Large and Finely Selected Stock of **STANDARD BOOKS**, among which will be found the valuable Publications of John Cassells, including his celebrated Family Bible, Family Prayers, Pilgrim's Progress, Bible Dictionary, &c., &c., unsurpassed for the number and beauty of the Illustrations; Henry's Commentary, Clarke's Commentary; all of George Routledge & Co's Books; the Scientific and Mechanical works published by John Weale. This list will be found to include the writings of the Rev. Robert McCheyne; the Rev. R. McDuff; Rev. James Hamilton; Rev. Horatio Bonar; Rev. Dr. Guthrie, &c. Also cheap editions of the works of Dickens, Lever, Marryatt, James, Grant, Bulwer, Cooper, D'Israeli, Sir Walter Scott, &c., &c.

He has also imported **Several Thousand Juvenile Books**, beautifully Illustrated, from 12½ cents to \$1.00, got up on purpose for Sunday School Libraries, Sunday and Day School Reward Books, Christmas and New Year Presents, &c., being the finest and cheapest selection of such Books ever brought into Chatham.



GREAT BARGAINS!

Besides the above, he has purchased at the Fall Trade Sales, New York, over 6,000 Vols. of Miscellaneous Books—the most popular works of the day—all of which will be sold at less than half the value, and over the half at less than quarter price, viz: you can have the choice of any four Books, for **One Dollar!** Each of which sells anywhere else at \$1.00 to \$1.50,

The public will find this a splendid opportunity for replenishing their Private, Public, Sunday School and Day School Libraries, for purchasing **CHEAP & STANDARD BOOKS** for themselves and their children; as never before was seen in this part of Canada, such a variety of Books, and at prices that defy competition.

Come One! Come All! and Judge for Yourselfes!

Remember the Post Office Book Store, the Emporium for everything in the shape of Literature.

P. C. ALLAN.

CHATHAM, NOVEMBER 1, 1865.

1865a
1

LIST OF PERIODICALS FOR SALE BY

P. C. ALLAN, POST OFFICE BOOKSTORE, CHATHAM, C. W.

ENGLISH MONTHLIES,

WEEKLY PAPERS.

	PRICE PER NO. CENTS.		PRICE PER NO. CENTS.
London Society,	80	New York Ledger,	6
The Cornhill,	30	New York Weekly,	6
The Shilling Magazine,	30	New York Mercury,	6
Once a Week,	30	New York Weekly Tribune,	5
Temple Bar,	30	New York Weekly Herald,	6
St. James Magazine,	30	New York Weekly World,	6
The English Woman's Domestic Magazine	30	The Waverly Magazine,	12½
The Young English Woman's Magazine,	20	Harper's Weekly,	10
The Family Herald, in parts,	20	Leslie's Illustrated Paper,	10
The London Journal, in parts,	20	Leslie's Chimney Corner,	10
Reynold's Miscellany, in parts,	20	The Scottish American,	6
Cassell's Family Paper, in parts,	20	The Boston Pilot,	6
Leisure Hour, in parts,	15	The Police Gazette,	8
Sunday at Home, in parts,	15	Wilkes' Spirit of the Times,	12½
Sunday Magazine,	15	New York Clipper,	10
Good Words,	12½	Toronto Weekly Globe,	5
Cuamber's Journal,	17	Toronto Weekly Leader,	5
AMERICAN MONTHLIES.		Montreal Saturday Reader,	5
Harper's Magazine,	30	Chatham Weekly Planet,	5
Godeys' Ladys' Book,	25	Chatham Weekly Banner,	5
Leslie's Family Magazine,	30		
Atlantic Monthly,	30	DAILY PAPERS.	
Madame Demcrest's Mirror of Fashions,	25	Detroit Daily Papers,	
Ballou's Magazine,	12½	Toronto Daily Papers,	
Leslie's New Monthly Magazine,	12½	New York Daily Papers,	
Peterson's Ladies' Magazine,	20		

☞ Subscriptions taken for the above, which will be mailed punctually to any part of Canada.

Any Periodical, Magazine or News Paper published in any part of the world, can be had by leaving the order with

P. C. ALLAN.

ALMANACS FOR SALE BY P. C. ALLAN:

Canadian Almanac	12½	Greeley's Tribune Almanac	
County of Kent Farmers' Almanac,	5	Family Christian Almanac,	
Illustrated London Almanac,	30	German Almanac,	
Cassell's Family Almanac,	20	French Almanac,	
Punch Almanac,	12½	The Annual Register of Rural Affairs,	
Cruikshank's Comic Almanac,	12½	Leslie's Illustrated Almanac,	
Hannay's Royal London Almanac,	25	Leslie's Ladies' Almanac,	
Rimmel's Perfumed Almanac.			

5/1/18
 Bazaar Hall Antiques
 1/1/18

