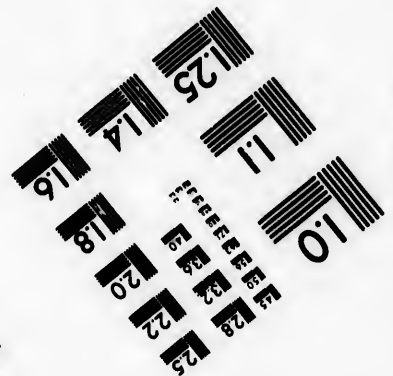


Photographic  
Sciences  
Corporation

23 WEST MAIN STREET  
WEBSTER, N.Y. 14580  
(716) 872-4503





Canadian Institute for Historical Microreproductions / Institut canadien de microreproductions historiques

© 1986

10  
11  
12  
13  
14  
15  
16  
17  
18  
19  
20  
21  
22  
23  
24  
25  
26  
27  
28  
29  
30  
31  
32

- |  |  |
|--|--|
| <input type="checkbox"/> Cover title missing/<br>Le titre de couverture manque   | <input checked="" type="checkbox"/> Pages discoloured, stained or foxed/<br>Pages décolorées, tachetées ou piquées   |
| <input type="checkbox"/> Coloured maps/<br>Cartes géographiques en couleur   | <input type="checkbox"/> Pages detached/<br>Pages détachées  |
| <input type="checkbox"/> Coloured ink (i.e. other than blue or black)/<br>Encre de couleur (i.e. autre que bleue ou noire)   | <input checked="" type="checkbox"/> Showthrough/<br>Transparence   |
| <input type="checkbox"/> Coloured plates and/or illustrations/<br>Planches et/ou illustrations en couleur  | <input type="checkbox"/> Quality of print varies/<br>Qualité inégale de l'impression   |
| <input type="checkbox"/> Bound with other material/<br>Relié avec d'autres documents   | <input type="checkbox"/> Includes supplementary material/<br>Comprend du matériel supplémentaire   |
| <input type="checkbox"/> Tight binding may cause shadows or distortion<br>along interior margin/<br>La reliure serrée peut causer de l'ombre ou de la<br>distorsion le long de la marge intérieure   | <input type="checkbox"/> Only edition available/<br>Seule édition disponible   |
| <input type="checkbox"/> Blank leaves added during restoration may<br>appear within the text. Whenever possible, these<br>have been omitted from filming/<br>Il se peut que certaines pages blanches ajoutées<br>lors d'une restauration apparaissent dans le texte,<br>mais, lorsque cela était possible, ces pages n'ont<br>pas été filmées. | <input type="checkbox"/> Pages wholly or partially obscured by errata<br>slips, tissues, etc., have been refilmed to<br>ensure the best possible image/<br>Les pages totalement ou partiellement<br>obscurcies par un feuillet d'errata, une pelure,<br>etc., ont été filmées à nouveau de façon à<br>obtenir la meilleure image possible. |
| <input checked="" type="checkbox"/> Additional comments: /<br>Commentaires supplémentaires:  | [Printed ephemera] 1 sheet (verso blank)   |

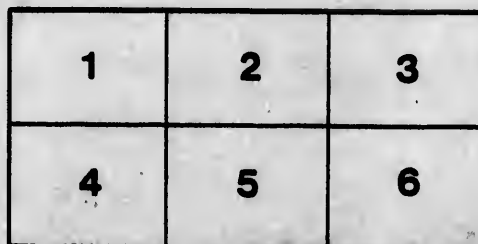
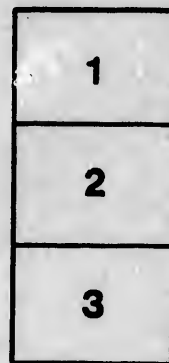
This item is filmed at the reduction ratio checked below/  
Ce document est filmé au taux de réduction indiqué ci-dessous.

10X	14X	18X	22X	28X	30X
<input type="checkbox"/>	<input type="checkbox"/>	<input type="checkbox"/>	<input type="checkbox"/>	<input type="checkbox"/>	<input checked="" type="checkbox"/>
12X	16X	20X	24X	28X	32X

start, and ending on the next page with a printed or illustrated impression.

The last recorded frame on each microfiche shall contain the symbol  $\rightarrow$  (meaning "CONTINUED"), or the symbol  $\nabla$  (meaning "END"), whichever applies.

Maps, plates, charts, etc., may be filmed at different reduction ratios. Those too large to be entirely included in one exposure are filmed beginning in the upper left hand corner, left to right and top to bottom, as many frames as required. The following diagrams illustrate the method:



originaux sont filmés en commençant par la première page qui comporte une empreinte d'impression ou d'illustration et en terminant par la dernière page qui comporte une telle empreinte.

Un des symboles suivants apparaîtra sur la dernière image de chaque microfiche, selon le cas: le symbole  $\rightarrow$  signifie "A SUIVRE", le symbole  $\nabla$  signifie "FIN".

Les cartes, planches, tableaux, etc., peuvent être filmés à des taux de réduction différents. Lorsque le document est trop grand pour être reproduit en un seul cliché, il est filmé à partir de l'angle supérieur gauche, de gauche à droite, et de haut en bas, en prenant le nombre d'images nécessaire. Les diagrammes suivants illustrent la méthode.

---

**CITY OF HAMILTON**

---

**PUBLIC NOTICE**

**THE CITY OF HAMILTON**

**IS HEREBY**

**TO THE ELECTORS OF THE**

That in pursuance of her Majesty's Writ of Election  
opened in each ward of the City, for recording

**WEDNESDAY &**

The 16th and 17th inst., opening each day at 9 o'clock

---

**FOR ST. GEORGE'S WARD, the polling place**  
**FOR ST. PATRICK'S WARD, in Mr. MULLINS**  
Catherine Street.

**FOR ST. LAWRENCE WARD, in the ENGINE**

MILLIN, TO WH.

# NOTICE!

## NOTICE!

REBY GIVEN,

OF THE CITY OF HAMILTON

rit of Election to me directed, a Polling place will  
ity, for recording the votes of the Electors, on

# WEDNESDAY & THURSDAY

day at 9 o'Clock, a. m., and closing at 5 o'Clock p. m.

ng place will be in the COURT HOUSE.

MULLINS' Office, Main Street, between John  
e Street.

# WEDNESDAY

The 16th and 17th inst., opening each day at 9

**FOR ST. GEORGE'S WARD, the polling place**  
**FOR ST. PATRICK'S WARD, in Mr. MULLI**  
**Catherine Street.**  
**FOR ST. LAWRENCE WARD, in the ENGINE**



**CITY OF HAMILTON**

**PUBLIC NOTICE**

**NOTICE**



**ALL WEDNESDAY**

each day at 9 o'Clock, a. m., and closing at 5 o'Clock p. m.

polling place will be in the **COURT HOUSE**.  
**Mr. MULLINS' Office, Main Street, between John  
erine Street.**  
**the ENGINE HOUSE, East Market Street.**



**R.**

**AMILTON, TO WIT:**

**G NOTICE!**



# WEDNESDAY &

The 16th and 17th inst., opening each day at 9 o'Clock

---

**FOR ST. GEORGE'S WARD, the polling place will be at the**  
**FOR ST. PATRICK'S WARD, in Mr. MULLINS' Shop, in**  
**Catherine Street.**

**FOR ST. LAWRENCE WARD, in the ENGINE HOUSE, in the**  
**FOR ST. ANDREW'S WARD, in the FRAME BUILDING, in the**  
**FOR ST. MARY'S WARD, in a Store in the McKinnon Street.**

Of all which every person concerned is hereby required to attend.

Given under my hand, this 9th day of December 1857.

Hamilton, December 8, 1857.

---

"Spectator" Steam Press. H

# WEDNESDAY & THURSDAY

Open day at 9 o'Clock, a. m., and closing at 5 o'Clock p. m.

---

Meeting place will be in the COURT HOUSE.

MULLINS' Office, Main Street, between John and  
George Street.

ENGINE HOUSE, East Market Street.

FRAME BUILDING, Market Block.

Meeting in the McKinstry Block, King Street, West.

He is hereby required to take notice, and govern himself accordingly  
on this 9th day of DECEMBER, 1857.

W. CRAIGIE,

**Returning Officer**

---

Printed at the Steam Press, Hamilton

