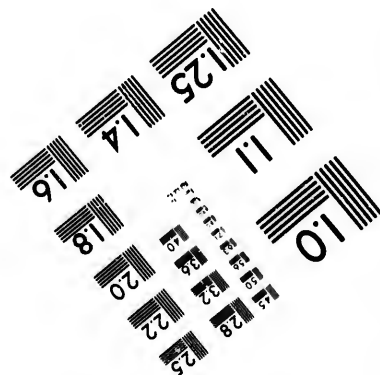
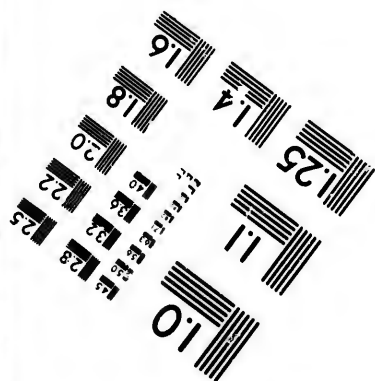
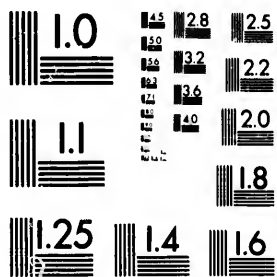


**IMAGE EVALUATION  
TEST TARGET (MT-3)**



**CIHM/ICMH  
Microfiche  
Series.**

**CIHM/ICMH  
Collection de  
microfiches.**



Canadian Institute for Historical Microreproductions

Institut canadien de microreproductions historiques

**1980**

Technical Notes / Notes techniques

The Institute has attempted to obtain the best original copy available for filming. Physical features of this copy which may alter any of the images in the reproduction are checked below.

L'Institut a microfilmé le meilleur exemplaire qu'il lui a été possible de se procurer. Certains défauts susceptibles de nuire à la qualité de la reproduction sont notés ci-dessous.

Coloured covers/  
Couvertures de couleur

Coloured pages/  
Pages de couleur

Coloured maps/  
Cartes géographiques en couleur

Coloured plates/  
Planches en couleur

Pages discoloured, stained or foxed/  
Pages décolorées, tachetées ou piquées

Show through/  
Transparence

Tight binding (may cause shadows or distortion along interior margin)/  
Reliure serré (peut causer de l'ombre ou de la distortion le long de la marge intérieure)

Pages damaged/  
Pages endommagées

Additional comments/  
Commentaires supplémentaires

---

Bibliographic Notes / Notes bibliographiques

Only edition available/  
Seule édition disponible

Pagination incorrect/  
Erreurs de pagination

Bound with other material/  
Relié avec d'autres documents

Pages missing/  
Des pages manquent

Cover title missing/  
Le titre de couverture manque

Maps missing/  
Des cartes géographiques manquent

Plates missing/  
Des planches manquent

Additional comments/  
Commentaires supplémentaires

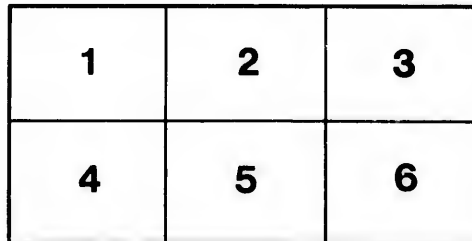
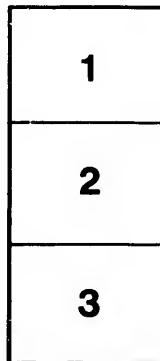
The images appearing here are the best quality possible considering the condition and legibility of the original copy and in keeping with the filming contract specifications.

The last recorded frame on each microfiche shall contain the symbol  $\rightarrow$  (meaning "CONTINUED"), or the symbol  $\nabla$  (meaning "END"), whichever applies.

The original copy was borrowed from, and filmed with, the kind consent of the following institution:

Library of the Public  
Archives of Canada

Maps or plates too large to be entirely included in one exposure are filmed beginning in the upper left hand corner, left to right and top to bottom, as many frames as required. The following diagrams illustrate the method:



Les images suivantes ont été reproduites avec le plus grand soin, compte tenu de la condition et de la netteté de l'exemplaire filmé, et en conformité avec les conditions du contrat de filmage.

Un des symboles suivants apparaîtra sur la dernière image de chaque microfiche, selon le cas: le symbole  $\rightarrow$  signifie "A SUIVRE", le symbole  $\nabla$  signifie "FIN".

L'exemplaire filmé fut reproduit grâce à la générosité de l'établissement prêteur suivant :

La bibliothèque des Archives  
publiques du Canada

Les cartes ou les planches trop grandes pour être reproduites en un seul cliché sont filmées à partir de l'angle supérieure gauche, de gauche à droite et de haut en bas, en prenant le nombre d'images nécessaire. Le diagramme suivant illustre la méthode :





A Full **Description**

OF THE TWO

# **Historical Paintings**

OF THE

Funeral of the late

## **Sir John S. D. Thompson**

K.M.G., M.P., Q.C., P.C., &c.

.. BY ..

**F. M. BELL-SMITH, R. C. A.**



785



A FULL DESCRIPTION

OF THE TWO

# Historical Paintings

... OF THE ...

FUNERAL OF THE LATE

SIR JOHN S. D. THOMPSON,

K.M.G., M.P., Q.C., P.C., &c.

... BY ...

F. M. BELL-SMITH, R.C.A.

1895





F  
J  
a  
d  
t  
B  
C  
a  
te  
B  
E  
ho  
T  
(t  
H  
F  
is

## Queen Victoria's Tribute to Her Dead Canadian Premier

---

For this Picture the Artist was honored with Personal Sitings  
from the Queen and H.R.H. Princess Beatrice  
at Windsor Castle.

---

This picture represents the QUEEN in the act of placing a laurel wreath upon the coffin of the late SIR JOHN S. D. THOMPSON, K.M.G., Q.C., M.P., P.C., etc., at Windsor Castle, Dec. 13, 1894.

Immediately behind the QUEEN stands her youngest daughter, PRINCESS BEATRICE, recently called to mourn the death of her husband, PRINCE HENRY OF BATTENBERG. On the extreme left of the picture stands SIR CHARLES TUPPER, High Commissioner for Canada, and at his side MRS. SANFORD, who, with her two daughters, represented the immediate friends of the deceased. Beside MISS SANFORD, and close to the pillar is LORD EDWARD PELHAM-CLINTON (Master of the Royal Household), he is the second son of the DUKE OF NEWCASTLE. The other side of the pillar is LADY SOUTHAMPTON (the lady in waiting). Beyond are the two Maids of Honor, the HON. JUDITH HARBORD and the HON. FRANCES DRUMMOND. On the other side of the PRINCESS is seen MISS McNEIL (woman of the bed-chamber, now

Duchess of Argyle. The Hindoo with the yellow clothing and white turban is one of Her Majesty's Indian Attendants; Her Highland Gillie, who died last year, is indistinctly seen outside in the porch-way.

The Indian Official standing on the opposite side of the entrance is the Munshi, HAFIZ ABDUL KARIM, C. E. I., the QUEEN'S Indian Secretary, and said to possess great influence. At his side stands GEN. SIR HENRY PONSONBY, P. C., G. C. B., who for many years was the QUEEN'S Private Secretary; he was 6 ft. 2 in. in height. Beyond him is seen in the shadow of the archway, GEN. SIR JOHN McNEIL, (Equerry) who accompanied the PRINCE OF WALES to this Country in 1861.

The tall gentleman next the pillar is LORD HAWKESBURY, (Lord in Waiting) and over his shoulder the head of the Librarian, LIEUT.-COL. HOLMES is just visible. On this side of the pillar are the Doctor, SIR JAMES REID, and LIEUT.-COL. SIR FLEETWOOD EDWARDS (Assistant Keeper of the Privy Purse). FATHER G. LONGINOTTO, Rector of St. Edward's is easily distinguished as the clean-shaven man with the strong, handsome, expressive face. Beyond him the tall, fine, military-looking man with white hair and moustache is LIEUT.-COL. CLERK, Private Secretary to H. R. H. PRINCESS BEATRICE; and at his side is LIEUT.-COL. THE HON. WM. CARRINGTON (Equerry).

The German Secretary, MR. MUTHER, stands just behind the priest, and beyond are seen the Inspector and Deputy-Inspector of the Castle, MR. LEONARD COLLMANN and MR. MILES.

The scene occurred on the 13th December, 1894,

*State*

in the ~~Grand~~ Entrance to Windsor Castle. This is one of the oldest parts of this historic structure built by Edward III early in the 14th century. The view presented through the entrance carries the eye across the Quadrangle and through George IV's Gateway in the South Wing a view of the Long Walk stretching away for three miles to Snow Hill in the distance is obtained.

It will be remembered that SIR JOHN THOMPSON had gone to Windsor on the 12th December, to be sworn in as a member of Her Majesty's Most Honorable Privy Council. After the ceremony he, in company with the Lords and Ladies of the Household, adjourned to luncheon in the Octagon dining room in the Brunswick Tower. Complaining of faintness while at the table he was assisted to the State dining room almost adjoining. Here he recovered himself sufficiently to return to the table, at which he had only been seated for a few moments, when he fell over and immediately expired. On the following day the body was taken to London, and it was just before the funeral cortege left the Castle that the QUEEN performed the graceful act which forms the subject of this picture.



t  
r  
i  
c  
C  
o  
P  
P  
b  
"  
s  
b  
G  
M  
sh  
"  
st  
an  
S  
H  
T  
th  
so

## Arrival of the "Blenheim" at Halifax

---

Captain Poe's orders when leaving England were to be in Halifax at 12 noon on the 1st of January, 1895. This he fulfilled to the letter, dropping anchor in the Harbor at 11.50 a.m. on that day. At two o'clock in the afternoon the casket, covered with the Canadian Ensign, and born by eight sailors was brought on deck, and while all present, in defiance of the down-pour of rain and sleet, bared their heads, and accompanied by the strains of the "Dead March in Saul" by the Marine Band, and salutes fired from the "Blenheim," the Citadel, and George's Island, was slowly lowered into the tender "Lily" which, manned by an escort of Marines, was lying alongside. The GOVERNOR GENERAL and LADY ABERDEEN, with GENERAL MONTGOMERY MOORE and staff received the body on shore, and are therefore not shown on the deck of the "Blenheim." The representatives of the Government stand together in a line on the right of the picture, and are the LON. J. J. CURRAN (Solicitor-General), HON. SIR CHARLES HIBBERT TUPPER (Minister of Justice), HON. SIR FRANK SMITH, HON. W. B. IVES (Minister of Trade and Commerce), HON. T. M. DALY (Minister of the Interior). Just behind the coffin are the two sons of SIK JOHN THOMPSON, and at their side the

HON. SENATOR SANFORD, who accompanied the body in its passage across from England. MR. LOUIS COSTE, who had charge of the funeral arrangements at Halifax stands just behind JUDGE CURRAN on the extreme right. The two men carrying the wreaths are petty officers of the ship. CAPTAIN FOE, (fair, and nearly side view), COMMANDER KINGSMILL (dark and bearded), and COMMANDER ROBINSON (shorter and fair) stand together in the background, and the other officers behind them. The sole Press Representative was MR. CHAMBERS (*Montreal Star*), who is seen taking notes. The line of sailors on the left are told off to lower the coffin, which was done by ropes from the davits, into the tender which is just seen down on the left.

The mass of men on the bridges of the ship are all sailors, the whole ship's company, to the number of nearly 900 being assembled on this occasion. The day was not only very wet, raining hard, but dark and foggy.

the body  
COSTE,  
Halifax  
the right.  
Officers of  
(view),  
and Com-  
mander in  
them.  
MEMBERS  
the line  
the coffin,  
into the

ship are  
number  
n. The  
at dark





