

R376.8
W516
1876.177

Copy 1

VICTORIA UNIVERSITY
LIBRARY

HAMILTON COLLECTION

1876-1877.

ANNUAL CATALOGUE

OF THE

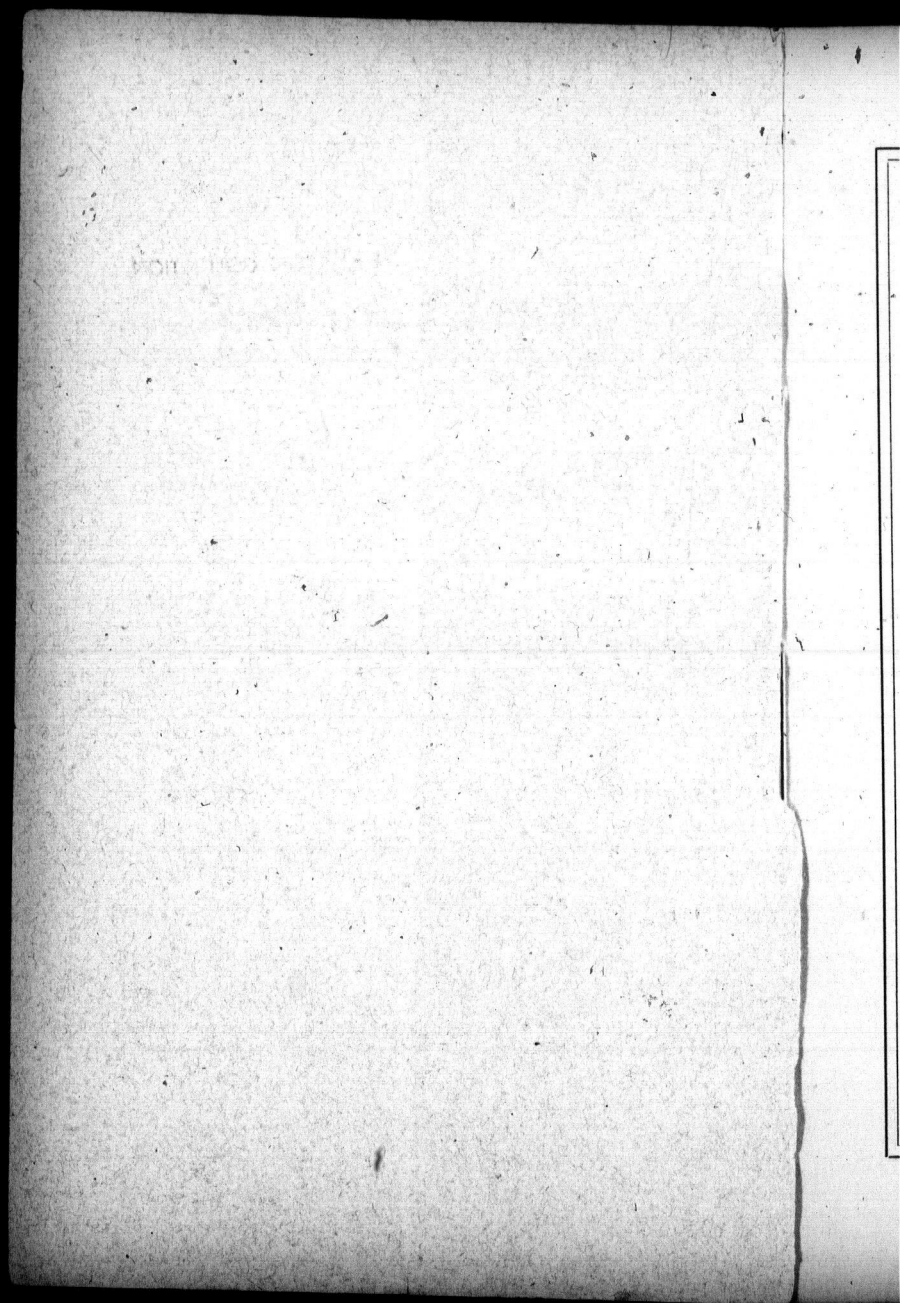
Wesleyan

Female

College,

HAMILTON, ONT.

Incorporated 1851



SIXTEENTH
ANNUAL CATALOGUE

OF THE

WESLEYAN FEMALE COLLEGE,

HAMILTON, ONT.,

FOR THE

COLLEGIATE YEAR 1876-1877.

Incorporated by Act of Parliament.

HAMILTON:

PRINTED BY THE TIMES PRINTING COMPANY.

1877.



CIRCULAR

HAMILTON as a residence is unsurpassed for healthfulness and beauty of location.

The building will accommodate 250 Boarders.

The rooms for Boarders are lofty, and have glass ventilators, connecting them with unusually lofty and spacious halls.

Each Sitting-Room is carpeted, and furnished with everything necessary to convenience and comfort.

The Institution Drawing-Room (25 by 60 ft.) is well furnished, and looks out upon a beautiful fountain.

The Dining-Hall (36 by 70 ft.) is airy, light, and, finished in fresco, with panelled walls and emblematic designs beautifully executed.

There are cold, hot, and shower baths, accessible at all proper times.

A spacious Play-ground, enclosed, with covered walks, will afford ample room for out-door exercise in all varieties of weather, and prove an inducement to healthful physical action.

There are three large School Rooms (30 by 60 ft.) furnished with chairs and tables suited to the comfort of the Student.

The Recitation-Rooms are large and airy. In no cases will classes be crowded together, and obliged to breathe fetid and unwholesome air.



BOARD OF DIRECTORS.

JOSEPH LISTER, Esq.	C. McQUESTEN, Esq., M.D.
J. W. ROSEBRUGH, Esq., M.D.	REV. S. S. NELLES, D.D., LL.D.
REV. E. WOOD, D.D., <i>Toronto.</i>	WM. ANGLIN, Esq., <i>Kingston.</i>
S. F. LAZIER, Esq., LL.B.	D. MOORE, Esq.
REV. S. ROSE, <i>Toronto.</i>	GEORGE ROACH, Esq.
JOHN BREDEN, Esq., <i>Kingston.</i>	REV. S. D. RICE, D.D.
REV. J. A. WILLIAMS, <i>St. Tho's.</i>	W. E. SANFORD, Esq.
REV. R. JONES, <i>Cobourg.</i>	WM. A. ROBINSON, Esq.
A. MACALLUM, Esq., M.A.	REV. G. R. SANDERSON, D.D.

EDWARD GURNEY, Esq.

Officers of the Board.

C. McQUESTEN, M.D.,	PRESIDENT.
DENIS MOORE, Esq.,	VICE-PRESIDENT.
JOSEPH LISTER, Esq.,	TREASURER.
REV. S. D. RICE, D.D.	SECRETARY.

Governor.

REV. S. D. RICE, D. D.

FACULTY OF INSTRUCTION.

Collegiate Department.

REV. S. D. RICE, D. D.,

Principal and Prof. of Mental Science and Evidences.

REV. W. P. WRIGHT, M. A., B. D.,

Professor of Natural Sciences.

MISS MARIA O. ALLEN, M. E. L.,

Literary Criticism.

MISS L. O'LOANE, M. E. L.,

Mathematics.

MISS M. PATERSON, M. E. L.,

Moral Science, &c.

MISS ISABELLA WALTON, M. E. L.,

Rhetoric, &c.

FACULTY OF INSTRUCTION.

Academic Department.

MRS. M. A. WRIGHT.
MISS CARRIE A. ROBERTSON.
MISS E. O. WERDEN.

Modern Languages.

MADemoISELLE GABUS,
French and German.

Fine Arts.

MRS. M. A. MACCARTHY,
Drawing and Painting.

Music.

R. S. AMBROSE, ESQ.,
Prof. of Music.
MISS ANNIE E. BOOTH.
MISS ANNETTE REESOR.

MRS. CALDWELL,
Vocal Music.

GRADUATES.

CLASS OF 1863.

Martha P. Grover, - M.L.A., - Hamilton.

CLASS OF 1864.

Mary F. Cromwell, - M.L.A., - Hamilton.
 Hester A. Fifield, - " - Orange, Vermont.
 Eliza Starr Rice, - " - Hamilton.
 Clara W. Farr, - M.E.L., - Hamilton.
 Ellen Hardie, - " - Bobcaygeon.
 Addie Knowles, - " - Cookstown.
 Elizabeth F. McGillivray, - " - Whitby.
 Frankie M. Palmer, - " - Thurlow.
 Elizabeth A. Sharp, - " - Cavanville.

CLASS OF 1865.

*Mary Allison, - M.L.A., - Sackville, N.B.
 Elizabeth A. Sharp, - " - Cavanville.
 Margaret Proctor, - " - Sarnia.
 Isabel M. Bray, - M.E.L., - Oakville.
 Arletta D. Massey, - " - Newcastle.

CLASS OF 1866.

Hattie A. Cook, - M.E.L., - Chicago, Ill.
 Jennie F. Greener, - " - Waterdown.
 Lucy McCullough, - " - Bradford.
 Emily Myles, - " - Hamilton.
 *Annie L. Stedman, - " - Dixon, Ill.
 Mollie F. Wood, - " - Dixon, Ill.
 Emma Watkins, - " - Hamilton.
 Charlotte Watkins, - " - Hamilton.

CLASS OF 1867.

*Maggie A. Jackes, - M.E.L., - Eglington.
 Jennie E. Huffman, - " - Bath.
 Adelia V. Patterson, - " - Belleville.
 Lizzie O'Loane, - " - Glanford.

* DECEASED.

CLASS OF 1868.

Emma J. Douse,	M.L.A.,	Paris.
Maria O. Allen,	M.E.L.,	Hamilton.
Jane Breden,	"	Kingston.
Julia A. Caldwell,	"	Montreal.
Helen Ford,	"	Kingston.
Rachel R. Freshman,	"	Lindsay.
Mary J. Keagey,	"	Dundas.
Alice M. M. Lister,	"	Hamilton.
M. Eliza Lapum,	"	Centerville.
Mary E. Moore,	"	Hamilton.
Ellen McHenry,	"	Napanee.
Mary J. Peat,	"	Hamilton.
Marietta Stinson,	"	Hamilton.
Emma F. Vail,	"	Hamilton.
Mary J. Walker,	"	Whitby.

CLASS OF 1869.

Mary E. Moore,	M.L.A.	Hamilton.
Emma F. Vail,	"	Hamilton.
Mary E. White,	"	Hamilton.
Jennie P. Allison,	M.E.L.,	Pictou.
H. M. Lincoln,	"	Waltham, Mass.
Mary J. Nisbet,	"	Hamilton.
Nellie E. Sawyer,	"	Hamilton.
Mary A. Winn,	"	Newmarket.
Mary E. White,	"	Bronte.

CLASS OF 1870.

Maggie E. Amos,	M.E.L.,	Hamilton.
Maria Bowman,	"	Blair.
Mary Y. Duff,	"	Hamilton.
Maria A. Hurlburt,	"	Point Abino.
Sarah Mulholland,	"	Yorkville.

CLASS OF 1871.

Fannie R. Lincoln,	M.L.A.,	Waltham, Mass.
Mary A. Bean,	M.E.L.,	Oshawa.
Anna I. Duncan,	"	Bayfield.
Annie Lister,	"	Hamilton.
Alice E. Lukes,	"	Newmarket.
Catharine C. Morton,	"	Matilda.

Matilda Meharry,	- - - -	M.E.L.,	-	Springville.
Eliza R. McMullen,	- - - -	"	-	Pictou.
Mary E. Tyrrell,	- - - -	"	-	Weston.

CLASS OF 1872.

Lillie Lister,	- - - -	M.L.A.,	-	Hamilton.
Emma F. Aikins,	- - - -	"	-	Toronto.
Alice R. Hurlburt,	- - - -	M.E.L.,	-	Manitoulin Island
Eliza Lucas,	- - - -	"	-	Champlain, N.Y.
Elvira M. Manning,	- - - -	"	-	Bradford.
Ida M. Sawyer,	- - - -	"	-	Muscatine, Iowa.

CLASS OF 1873.

Sarah A. Baker,	- - - -	M.E.L.,	-	Amherst, N. S.
Miriam A. Clark,	- - - -	"	-	Conway.
Sarah E. Hagar,	- - - -	"	-	Welland.
Lizzie M. Haskell,	- - - -	"	-	Waterloo, Que.
Annie Leary,	- - - -	"	-	Britannia.
Mary D. McIlwraith,	- - - -	"	-	Hamilton.
Mary J. Paterson,	- - - -	"	-	Dunsford.
Agnes Randall,	- - - -	"	-	Newmarket.
Maggie E. Stanley,	- - - -	"	-	London.
Georgie J. Stinson,	- - - -	"	-	Hamilton.
Isabella Walton,	- - - -	"	-	Pakenham.
Ophelia E. Webster,	- - - -	"	-	Bracebridge.

CLASS OF 1874.

Florence H. Brown,	- - - -	M.E.L.,	-	Hamilton.
Alice M. Constable,	- - - -	"	-	Spencerville.
M. E. France,	- - - -	"	-	Brooklyn, N. Y.
Agnes Porteous,	- - - -	"	-	Paisley.
Marian M. Rogers,	- - - -	"	-	Wallaceburg.

CLASS OF 1875.

Katie E. Kerr,	- - - -	M.L.A.,	-	Perth.
Susie F. Wilson,	- - - -	"	-	Hamilton.
Sarah Davey,	- - - -	M.E.L.,	-	Liskeard.
Clara L. Francé,	- - - -	"	-	Hamilton.
Clara J. Haskell,	- - - -	"	-	Waterloo, Que.
Henrietta Lake,	- - - -	"	-	Pictou.
Janette A. Mitchell,	- - - -	"	-	Drummondville.
Mary J. McCarthy,	- - - -	"	-	St. Catharines.
Martha M. Robertson,	- - - -	"	-	Harriston.
Nettie Upper,	- - - -	"	-	St. Anns.

CLASS OF 1876.

Frances Bryson,	- - - -	M.L.A.,	-	Montreal.
Leetta L. Gilbert,	- - - -	"	-	Philadelphia, Pa.
Jennie N. McIlwraith,	- - - -	"	-	Hamilton.
Bessie R. Starr,	- - - -	"	-	Yarmouth, N. S.
Maggie D. Webster,	- - - -	"	-	Quebec.
Gertrude H. A. Buck,	- - - -	M.E.L.	-	Palermo.
Gertrude E. Condy,	- - - -	"	-	Toronto.
Laura A. McEvers,	- - - -	"	-	Cobourg.
Louisa M. Robertson,	- - - -	"	-	Harriston.
Ina Sutherland,	- - - -	"	-	Fingal.
Sophia J. White,	- - - -	"	-	Hamilton.
Ida Wilkens,	- - - -	"	-	Quebec.

CLASS OF 1877.

Georgina Beynon,	- - - -	M.L.A.	-	Yorkville.
Nellie Flack,	- - - -	"	-	Banda.
Evelina O. Werden,	- - - -	"	-	Gilbert's Mills.
Rose Adam,	- - - -	M.E.L.	-	Lindsay.
Laura Brush,	- - - -	"	-	Austin, Texas.
Mary E. W. Bowes,	- - - -	"	-	Hamilton.
Jessie Benton Crawford,	- - - -	"	-	Franklin, Pa.
Mary Janette Collier,	- - - -	"	-	St. Catharines.
May R. Dickson,	- - - -	"	-	Sarnia.
Lucy H. Hurlburt,	- - - -	"	-	Manitowaning
Lizzie C. McCalmont,	- - - -	"	-	Franklin, Pa.
Anna O'Loane,	- - - -	"	-	Renton Station
Mary Randall,	- - - -	"	-	Newmarket.
Lucinda A. J. Wigle,	- - - -	"	-	Ruthven.
Louie M. Wright,	- - - -	"	-	Hamilton.

Total Number, 122.



LIST OF STUDENTS' NAMES.

Adam, Rose	-	-	-	Lindsay,	-	-	-	Ont.
Abraham, Minnie	-	-	-	Hamilton,	-	-	-	"
Abraham, Ella	-	-	-	Hamilton,	-	-	-	"
Aikman, Laura	-	-	-	Palermo,	-	-	-	"
Ashbaugh, Josephine	-	-	-	Hamilton,	-	-	-	"
Bredin, Caroline	-	-	-	Barrie,	-	-	-	"
Bowes, Mary E. W.	-	-	-	Hamilton,	-	-	-	"
Brown, Jennie	-	-	-	Paris,	-	-	-	"
Beatty, Hattie	-	-	-	Thorold,	-	-	-	"
Bowslaugh, Ada	-	-	-	Grimsby,	-	-	-	"
Beynon, Georgie	-	-	-	Yorkville,	-	-	-	"
Boardman, Mary G.	-	-	-	Austin,	-	-	-	Texas.
Buggin, Leila	-	-	-	Seaforth,	-	-	-	Ont.
Brush, Laura	-	-	-	Austin,	-	-	-	Texas.
Brush, Pinkie	-	-	-	Austin,	-	-	-	"
Brush, Annie	-	-	-	Austin,	-	-	-	"
Bogart, Bella	-	-	-	Hamilton,	-	-	-	Ont.
Bradley, Emma	-	-	-	Hamilton,	-	-	-	"
Blaicher, Clara	-	-	-	Hamilton,	-	-	-	"
Boulbee, Minnie	-	-	-	Hamilton,	-	-	-	"
Baker, Fannie	-	-	-	Kilbride,	-	-	-	"
Clark, Mary J.	-	-	-	Sheridan,	-	-	-	Ont.
Carpenter, Bessie	-	-	-	Simeoe,	-	-	-	"
Carpenter, Ada B.	-	-	-	Winona,	-	-	-	"
Currie, Mary	-	-	-	Dresden,	-	-	-	"
Coatsworth, Nettie	-	-	-	Toronto,	-	-	-	"
Collier, Mary J.	-	-	-	St. Catharines,	-	-	-	"
Crawford, Jessie B.	-	-	-	Franklin,	-	-	-	Pa.
Coulson, Mary A.	-	-	-	Colborne,	-	-	-	Ont.
Cosford, Ella	-	-	-	Muncey,	-	-	-	"
Clappison, Annie C.	-	-	-	Glanford,	-	-	-	"
Clare, Alvina	-	-	-	Preston,	-	-	-	"

Chilman, Emily	- - -	Hamilton,	- - -	Ont.
Cope, Alida	- - -	Beverly,	- - -	"
Cochrane, Jessie	- - -	Hamilton,	- - -	"
Cochrane, Bella	- - -	Hamilton,	- - -	"
Carr, Clara	- - -	Hamilton,	- - -	"
Crisp, Alice	- - -	Hamilton,	- - -	"
Dickson, May R.	- - -	Sarnia,	- - -	Ont.
Dobbyn, Minnie	- - -	Shetland,	- - -	"
Dobbyn, Annie	- - -	Shetland,	- - -	"
Davis, Jennie	- - -	Hamilton,	- - -	"
Davis, Mattie	- - -	Napanee,	- - -	"
Erb, Minnie	- - -	Preston,	- - -	"
Eckerson, Clara	- - -	Hamilton,	- - -	"
Evans, Alice	- - -	Hamilton,	- - -	"
Eager, Hannah	- - -	Hamilton,	- - -	"
Foster, Florence	- - -	Waterford,	- - -	"
Flack, Ellen	- - -	Banda,	- - -	"
Forsyth, Adele	- - -	Quebec,	- - -	Que.
Fraser, Jessie	- - -	Westmeath,	- - -	Ont.
Fenton, Aggie	- - -	Hamilton,	- - -	"
Frickelton, Mattie	- - -	Wardsville,	- - -	"
Graham, Lottie	- - -	Wingham,	- - -	"
Graham, Ida	- - -	Toronto,	- - -	"
Graham, Ada	- - -	Toronto,	- - -	"
Gage, Laura	- - -	Hamilton,	- - -	"
Galloway, Maggie	- - -	Hamilton,	- - -	"
Grover, Clara	- - -	Hamilton,	- - -	"
Galbraith, Clara	- - -	Hamilton,	- - -	"
Hurd, Libbie	- - -	Meaford,	- - -	"
Howell, Ella A.	- - -	Jerseyville,	- - -	"
Herndon, Mary F.	- - -	Tyler,	- - -	Texas.
Hillyard, Sophia M.	- - -	St. Mary's,	- - -	Ont.
Harrison, Gussie	- - -	Milton,	- - -	"
Hilker, Hannah	- - -	Port Elgin,	- - -	"
Hurlburt, Lucy	- - -	Manitowaning,	- - -	"
Huxley, Mary	- - -	Brampton,	- - -	"
Hyde, Fannie	- - -	New Haven,	- - -	Conn.
Healy, Serena	- - -	Cainsville,	- - -	Ont.
Hutchinson, Susie	- - -	Hamilton,	- - -	"
Hoodless, Jennie	- - -	Hamilton,	- - -	"

Hayward, Emma	- - -	Bayfield,	- - -	Ont.
Hudson, Lillie	- - -	Hamilton,	- - -	"
Hurd, Minnie	- - -	Hamilton,	- - -	"
Holton, Maude	- - -	Hamilton,	- - -	"
Hartshorne, Mary	- - -	Hamilton,	- - -	"
Hopkinson, Lovina	- - -	Waterdown,	- - -	"
Langdon, Anna	- - -	Buffalo,	- - -	N. Y.
Lawrason, Victoria	- - -	St. George,	- - -	Ont.
Lord, Jessie B.	- - -	Bay City,	- - -	Mich.
Lister, Lilly	- - -	Hamilton,	- - -	Ont.
Lister, Frances	- - -	Hamilton,	- - -	"
Lister, May	- - -	Hamilton,	- - -	"
Lister, Louisa	- - -	Hamilton,	- - -	"
Laing, Lilly	- - -	Hamilton,	- - -	"
Lanton, Nellie M.	- - -	Hamilton,	- - -	"
Livingston, Alice	- - -	Hamilton,	- - -	"
Marlatt, Delia A.	- - -	Port Nelson,	- - -	"
Marlatt, Katie	- - -	Hamilton,	- - -	"
Merrill, Jennie	- - -	Norwich,	- - -	"
Merrill, Minnie	- - -	New Durham,	- - -	"
Miles, Florence	- - -	Belleville,	- - -	"
Murton, Jessie	- - -	York,	- - -	"
Mulholland, Angeline	- - -	Yorkville,	- - -	"
Munro, Aggie	- - -	St. Thomas,	- - -	"
Moore, Carrie	- - -	Hamilton,	- - -	"
Moore, Mary	- - -	Hamilton,	- - -	"
Moore, Tillie	- - -	Hamilton,	- - -	"
Middlewood, Libbie	- - -	Hamilton,	- - -	"
Martin, Emily	- - -	Hamilton,	- - -	"
Martin, Louisa	- - -	Hamilton,	- - -	"
Macaulay, Kate	- - -	Penfield,	- - -	N. Y.
Macaulay, Esther,	- - -	Penfield,	- - -	"
McMillan, Clarinda	- - -	Erin,	- - -	Ont.
McMillan, Ella	- - -	Erin,	- - -	"
McGough, Kate	- - -	Parker's Landing,	- - -	Pa.
McCalmont, Lizzie	- - -	Franklin,	- - -	"
McCrea, Lizzie	- - -	Sault Ste Marie	- - -	Ont.
McQuesten, Lutie	- - -	Hamilton,	- - -	"
Mackay, Eugenie	- - -	Hamilton,	- - -	"
Nolan, Lena	- - -	Toronto,	- - -	"
Nottle, Louisa	- - -	Hamilton,	- - -	"

Nottle, Susie	Hamilton,	Ont.
Noble, Martha M.	Hamilton,	"
Northey, Hattie	Hamilton,	"
O'Loane, Anna	Renton Station,	"
Overend, Mary	Hamilton,	"
Perine, Annie	Conestoga,	"
Poston, Ella	Quebec,	Que.
Pears, Annie	Toronto,	Ont.
Pears, Mary	Toronto,	"
Paterson, May	Quebec,	Que.
Plunkett, Alice	Meaford,	Ont.
Pennington, Annie	Hamilton,	"
Roberts, Katie	St. John,	N. B.
Roberts, May	St. John,	"
Rouse, Freddilena	Bay City,	Mich.
Rosebrugh, Ida	Hamilton,	Ont.
Randall, Mary	Newmarket,	"
Rogers, Gussie	Toronto,	"
Ruger, Sarah E.	Buffalo,	N. Y.
Root, Hattie S.	Perth,	Ont.
Russell, R. A.	Hamilton,	"
Rutledge, Maggie	Bayfield,	"
Roach, Louisa	Hamilton,	"
Roach, Bella	Hamilton,	"
Rice, Emma	Hamilton,	"
Rice, Hattie	Hamilton,	"
Rodgers, Maggie	Hamilton,	"
Sutherland, Lizzie	Fingal,	Ont.
Scott, Minnie	Brockville,	"
Sait, Nellie	Montreal,	Que.
Sait, Katie	Montreal,	"
Soules, Hester	Queensville,	Ont.
Stonehouse, Martha	Armadales,	"
Swain, Louisa	Hamilton,	"
Sharkey, Annie	Hamilton,	"
Simpson, Miss	Hamilton,	"
Springer, Charlotte	Hamilton,	"
Springer, Emma	Hamilton,	"
Sawyer, Mary	Hamilton,	"
Secord, Laura	Hamilton,	"
Titus, Bella	Otterville,	"

Totten, Mary	- - -	Tottenham,	- - -	Ont.
Thompson, Etta	- - -	Montreal,	- - -	Que.
Taylor, Annie	- - -	Guelph,	- - -	Ont.
Thomas, Lizzie	- - -	Hamilton,	- - -	"
Thomas, Carrie	- - -	Hamilton,	- - -	"
Thomas, Katie	- - -	Hamilton,	- - -	"
Van Slyke, Myra G.	- - -	Hamilton,	- - -	"
Wright, Louie	- - -	Hamilton,	- - -	"
Whittaker, Carrie A.	- - -	St. John,	- - -	N. B.
Wood, Julia C.	- - -	Cleveland,	- - -	Ohio.
Wilson, Clara M.	- - -	Picton,	- - -	Ont.
Werden, Evelina Q.	- - -	Gilbert's Mills,	- - -	"
Wilson, Annie	- - -	Ingersoll,	- - -	"
Wigle, Lucinda A. J.	- - -	Ruthven,	- - -	"
Webster, Sarah R.	- - -	Quebec,	- - -	Que.
Wood, Gussie	- - -	St. Thomas,	- - -	Ont.
White, Sarah	- - -	Milton,	- - -	"
White, Emily	- - -	Hamilton,	- - -	"
Waddell, Clara	- - -	Hamilton,	- - -	"
Watkins, Lillie	- - -	Hamilton,	- - -	"
Watkins, Ella	- - -	Hamilton,	- - -	"
Work, Rachel	- - -	Hamilton,	- - -	"
Whipple, Clara	- - -	Hamilton,	- - -	"
Willoughby, Miss	- - -	Seneca,	- - -	"
Yeomans, Lottie	- - -	Belleville,	- - -	"

Total Number, 180.



Alumna Association.

"Vita sine literis mors est."

THIS Association was established in June, 1868. The objects in view are the intellectual improvement of the members and the advancement of the interests of the Institution with which it is identified.

During the winter of 1876-7, the Finance Committee of the Association arranged for a course of entertainments, consisting of readings by MARTIN FARQUHAR TUPPER, an Amateur Concert, and two Lectures by the REV. CHARLES CLARK. These were so successful that the season closed with \$100 in the Treasury. The Public Exercises at the close of the Collegiate year were also most interesting. They included a Lecture and an Address by the REV. J. T. DURYEA, D.D., of Brooklyn, and music by the best talent procurable.

At the Business meeting held May 26th, the Association voted \$10 as a prize for the best Essay on the subject, "Poetry of Common Life," the competition to be open to the school.

They also offer \$20 to be competed for by the Alumnae. The Subject for this year is not yet decided but will be announced in due time.

At the recent Closing Exercises, Miss Annie Lister received the latter prize and Miss Werden the former for the year just closed. Miss Lillie Lister received the prize of \$30.00 given by the Board of Directors.

The next annual meeting will be held in May, 1878, and will probably be quite as interesting as the last. A full attendance of Alumnae is requested.

Any graduate becomes a member of the Association by the payment of the annual fee of \$1.00.

Any member changing either name or address is requested to make the same known to the Secretary, Miss M. D. McLwraith, Hamilton.

The following are the Officers and members for the year ending May, 1878:—

President,	- - -	Mrs. BIRGE, M.L.A.
		Miss ALLEN, M.E.L.
Vice-Presidents,	- - -	Miss WALTON, M.E.L.
Corresponding Sec'y.	-	Miss M. D. McILWRAITH, M.E.L.
Recording Sec.-Treas.,	- -	Miss J. N. McILWRAITH, M.L.A.

Miss Palmer (Mudell).
 " Freshman (Marshall).
 " Winn (Morton).
 " O'Loane.
 " Bray.
 " M. E. White.
 " Cadwell.
 " Ford (Holton).
 " Douse (Crosby).
 " Keagey.
 " Lapum.
 " Watkins (Reasner).
 " Cromwell (Gurney).
 " Watkins (Tovell).
 " McCullough (Chambers).
 " Mulholland (Morden).
 " Hurlburt (King).
 " Sawyer (Hills).
 " Nisbet.
 " Meharry.
 " McMullen.
 " Duncan (Ross).
 " Morton.
 " A. Lister.
 " Aikens.
 " Manning (Ross).
 " Lincoln.
 " Sharpe (Neville).
 " Randall (Fisher).
 " Walton.
 " L. Lister.
 " Porteous (Saunders).
 " France.
 " Constable.
 " Upper.
 " Knowles (Colling).
 " Kerr.
 " Leary.
 " M. Webster.
 " Buck.
 " Starr (Keefer).
 " Robertson.
 " Coady.
 " Brush.
 " Collier.
 " Adam.
 " Crawford.
 " Dickson.
 " Beynon.
 " Wilkens.

Miss Greener (Foley).
 " Grover (Seeley).
 " Bredin.
 " Allison (Roblin).
 " Cook.
 " Amos (Galbreath).
 " Duff.
 " Allen.
 " Rice (Cunningham).
 " Lister (Lazier).
 " Moore.
 " Stinson (Kenny).
 " Peat (King).
 " Farr (Metcalfe).
 " Bowman (Gerrie).
 " McHenry.
 " Massey (Watt).
 " White (Campbell).
 " Tyrrell.
 " Lukes.
 " Davey.
 " Proctor (Burwash).
 " Bean.
 " Sawyer.
 " Lincoln (Devereaux).
 " Hurlburt (Abrey).
 " O. Webster.
 " Paterson.
 " McIlwraith.
 " Brown (Birely).
 " Rogers.
 " Haskell.
 " Mitchell.
 " McCarthy.
 " Robertson (Gross).
 " Wilson.
 " Gilbert.
 " J. McIlwraith.
 " Sutherland.
 " McEvers.
 " Bryson.
 " Hurlburt.
 " McCalmont.
 " Flack.
 " A. O'Loane.
 " Wigle.
 " Wright.
 " Werden.
 " M. Randall.
 " Bowes.

COURSE OF STUDY.

N.B.—Students can pursue an elective course, embracing any study in either the Academic or Collegiate course, and receive a corresponding certificate.

The student is graded at first on her own statement of progress without a detailed examination; any changes necessary are made in the course of the first month.

Those who intend to take a full course, will find it indicated below.

Preparatory Department.

FIRST CLASS.

English Dictionary,	- - - -	Nuttall.
Reading 4th book,	- - - -	Canadian Series.
Orthography,	- - - -	Authorized.
Composition,	- - - -	Easy Lessons.
Penmanship, Nos. 1, 2, 3,	- - - -	Payson & Dunton.
Geography,	- - - -	Hodgins' Easy Lessons.
Arithmetic,	- - - -	Small Authorized.
Grammar,	- - - -	Towers' Elements.
English History,	- - - -	Arthur's England.

SECOND CLASS.

Reading, 5th book,	- - - -	Canadian Series.
Geography,	- - - -	Lovell's.
Arithmetic,	- - - -	Authorized.
Grammar,	- - - -	Authorized.
Composition,	- - - -	
English History,	- - - -	Collier.
Physiology,	- - - -	Cutter's Small.
Orthography,	- - - -	Authorized.
Penmanship, Nos. 6 and 9,	- - - -	Payson & Dunton.

Academic Department.

Reading,	- - - - -	Wilson's Rhetorical.
"	- - - - -	Carpenter.
Geography (completed),	- - - - -	Lovell's.
Arithmetic,	- - - - -	Authorized.
Orthography,	- - - - -	Authorized.
General History,	- - - - -	Swinton.
Composition,	- - - - -	
Penmanship, Nos. 13, 14 and 15,	- - - - -	Payson and Dunton.
Natural History,	- - - - -	Davidson's.
Algebra (commenced),	- - - - -	Colenso.
Book-keeping,	- - - - -	Eastman.
Natural Philosophy (commenced),	- - - - -	Peck's Ganot.

Collegiate Department.

FIRST YEAR.

Introductory Latin Book,	- - - - -	Harkness.
Latin Grammar,	- - - - -	Harkness.
French,	- - - - -	De Jardin's Course.
" Conversation,	- - - - -	French Phrase Book.
" French Reader,	- - - - -	
" Dictionary,	- - - - -	Surenne's Standard.
Algebra (completed),	- - - - -	Colenso.
Natural Philosophy (completed),	- - - - -	Peck's Ganot.
Physical Geography,	- - - - -	Warren,
Grammatical Analysis,	- - - - -	Paradise Lost.
Universal History,	- - - - -	
English Literature,	- - - - -	Collier.
Classical Reading,	- - - - -	Bell.
Geometry,	- - - - -	Pott's Euclid.

SECOND YEAR.

Latin Reader,	- - - - -	Harkness.
Latin, Cæsar, Book I,	- - - - -	Anthon.
French,	- - - - -	De Jardin (completed).
Corinne,	- - - - -	De Stael.
Geometry,	- - - - -	Pott's Euclid.
Rhetoric and Composition,	- - - - -	Hart.
Evidences of Christianity,	- - - - -	Paley.

Natural Theology,	- - - - -	Paley.
Botany,	- - - - -	Wood's Botanist.
English Classical Reading,	- - - - -	Taine.
Physiology,	- - - - -	Dalton.

THIRD YEAR.

Latin, Virgil, Books I. and II.	- - - - -	Anthon.
French Grammar,	- - - - -	Poitevin.
" Tragedies,	- - - - -	Racine.
" Composition and Conversation.	- - - - -	
Trigonometry,	- - - - -	Davies' Legendre.
Astronomy,	- - - - -	Lectures.
Chemistry,	- - - - -	Steele.
Logic,	- - - - -	Atwater.

FOURTH YEAR.

Latin, Horace, Odes—Books I. and II.	- - - - -	Anthon.
French Literature,	- - - - -	Magill's Prose and Poetry.
" Composition and Conversation,	- - - - -	
Geology,	- - - - -	Steele.
Mental Philosophy,	- - - - -	Haven.
Moral Science,	- - - - -	Wayland.
English Classical Reading,	- - - - -	Selections.
" Composition,	- - - - -	

The English Course, omitting the Latin and French Languages, will embrace three years.

Spanish, German, and Italian Languages will be systematically studied when classes desire it.

GERMAN COURSE.—1st Year—Ahn's German Grammar, Adler's German Reader. 2nd Year—Tiark's Grammar, Adler's Progressive Reader. 3rd Year—Adler's Handbook of German Literature, History of German Literature. 4th Year—Schiller (Marie Stuart.) Goethe (Iphigenie.) History of German Literature.

ITALIAN.—Elementary Course—Fontana's Italian Grammar, Graglia's Italian Dictionary, Silvio Pellico, Italian Conversations. For full course, application may be made to teacher.

These Courses will correspond to the Collegiate, and either of these languages will be considered as equivalent for the Latin.

REMARKS ON COURSE OF STUDY.

PENMANSHIP.

Daily exercises in Penmanship are required, until good execution is attained.

READING AND SPELLING.

Particular attention is given to perfecting students in these branches.

COMPOSITION.

Composition is made a specialty, and will be required throughout the entire course, in forms varying with the advancement of the student. At the proper stage it will be connected with the principles and practice of literary criticism.

MUSIC.

Prominence is given to *Vocal Music*, in which the students receive instruction.

It is designed to afford the best facilities in the departments both of Vocal and Instrumental Music. The selection of music will be under constant supervision, and only that will be allowed which is conducive to the cultivation of the most pure and elevated taste, as well as the most rapid progress of the pupil in the acquisition of this delightful accomplishment. Students may bring the instruction book they have used at home.

Beyond this general training, those who desire it are instructed in selected classes, and in private lessons.

WAX FRUIT AND FLOWERS.

An accomplished teacher will instruct in this beautiful art, if required.

DRAWING AND PAINTING.

The course of study in this art is systematic, comprehensive and artistic, laying a foundation in the laws of perspective, and proceeding so progressively as to lead the student pleasantly on from elementary penciling from model to original sketching, and coloring in oil, in water, or in pastel.

MISCELLANY.

LECTURES.

Frequent informal Lectures will be given upon topics connected with health, manners, etc. Courses of Lectures will be delivered on Astronomy, Chemistry, Natural Philosophy, History and Aesthetics.

LIBRARY.

The Institution is furnished with a Library of nearly five hundred newly selected volumes of general reading and for reference, also a Reading-room.

A cabinet of Geological and Botanical specimens, and of Historical and General Curiosities and Illustrations of Natural History has been commenced, and will be carried on as rapidly as circumstances will allow. More than a thousand Geological Specimens are in the cabinet, containing an assortment of the fossils of all the strata, both of this continent and of Europe. Additions are constantly being made to this collection under the supervision of Prof. Wright. Contributions and exchanges are invited.

APPARATUS, MAPS, ETC.

The Institution is furnished with a fine set of Maps, Globes, Physiological Charts, a Microscope, and Philosophical and Chemical Apparatus. The sets for Geology and Botany are very complete and beautifully colored.

LITERARY SOCIETY.

"As ye sow so shall ye reap."

This Society, called the "Reapers," is confined to students of the third and fourth years, and is presided over by a member of the Faculty. Its object is Literary Improvement. Weekly meetings are held, at which original articles, and selections from the best authors are read, varied with music, etc. Its paper is called the "Sheaf," and is read at stated times during the year, before a select audience.

PRIZES TO THE LITERARY SOCIETY.—Denis Moore, Esq., offers for the coming year two prizes as heretofore, to be competed for by members

of this Society, the first of \$25.00, the second of \$15.00. The subject of the Essay is to be, "Heaven, a place of recognition and activity." The prize for the past year (the subject being "Botany"), was taken by Miss Anna O'Loane.

There is another Society called the "Press," whose paper is the "Echo."

MERIT ROLL.

A record of standing, literary and moral, is daily kept; and cards corresponding to this record are given to the Students once a week, and should be transmitted to parents for information. An Honor Card is received by pupils entitled to it at the end of each term.

HONORS OF THE INSTITUTION.

Two courses of study have been established, a Classical and an English; and Diplomas will be given to those who have satisfactorily completed either of them. The title of M.L.A., or Mistress of Liberal Arts, is given to the former, and M.E.L., or Mistress of English Literature, to the latter. Certificates may be had by those who have passed examination in a partial course.

A good moral standing is necessary in order to obtain either Certificate or Diploma.

BOARDING, ETC.

The Institution, as a home, is designed to be the abode of comfort and pleasant associations.

Rooms are carpeted and furnished throughout, so that the pupil requires nothing in addition. Napkins are not provided.

The provision for the table is wholesome and abundant.

GOVERNMENT.

It is intended that the government of the Institution shall be firm without being arbitrary; that it shall be founded upon confidence in the pupils, and that its tendency shall be to teach them self-control, obedience to principles, and a conscientious regard for right.

No young lady will be allowed to retain her connection with the school, whose example tends to encourage indolence or insubordination, or whose influence in other respects is injurious.

PRINCIPLES.

Truthfulness in opposition to pretence, patriotism, love of home, devotion to parents, simplicity, inartificiality, avoidance of heartlessness and display.

DRESS, ETC.

Every young lady must be provided with thick boots, umbrella and overshoes.

School-room dresses should be simple and inexpensive, with high necks and long sleeves.

Every article belonging to a Student should be marked with her full name before leaving home.

Very little jewelry or spending money should be at her disposal.


Carelessness and the possibility of dishonesty in servants, etc., make it proper that all funds should be deposited with the officer appointed for that purpose.

STUDENTS' CORRESPONDENCE.

Students are allowed to correspond with the home circle without any supervision; but correspondence beyond the home circle is not allowed without special permission, and letters not having this permission may be opened by the Principal or forwarded to the parents as he may judge best.

On entering, a list of correspondents is to be given in, signed by the parent or guardian.

Some Students have had too large a correspondence, occupying too much time, and diverting attention from school duties. This will, in future, be controlled.

 Candies, cakes, and eatables generally, sent from home, cause the receiver one or two days' sickness, and are a most pernicious kindness.

SESSION HOURS.

For recitation and study, from 15 minutes to 9 to 1.30 P.M. · Study hours 6.45 to 7.30 A.M.; 4.30 to 5.30 P.M.; and 7.30 to 8.30 P.M.

It is understood to be necessary that Day Students should spend at least two hours in study at home. Parents may be assured that something is wrong unless this is done.

Punctuality in the attendance of Day Students is of the utmost consequence. Tardiness results not only in loss to themselves, but is injurious to classes, and tends to general disorder. Tardiness and unexcused absence will stand against deportment on the Cards. All excuses must be signed by the name of Parent or Guardian.

VISITING AND RECEIVING VISITS.

STUDENTS' RECEPTION DAY.—Saturday afternoon.

All persons except immediate relatives, wishing to visit Students, are expected to present a letter from Parents or Guardians, or to be otherwise *suitably* introduced. Visits without this preliminary must be declined.

Students are allowed, at proper times, to visit such families as the Parents or Guardians may name to the Governor or Principal, but not to remain out over night, or over the Sabbath, except at the house of some near relative. The last Friday or Saturday in each month is the time appropriated to these visits. Friends who are invited must call for the young ladies and return with them.

When Students visit friends in the city, they will not be allowed to go except in charge of some one fully responsible. They will not visit any but the families, nor be allowed to visit from the house, make calls, walk about the streets, or visit shops and stores. Where this rule is violated Students cannot be allowed to visit.

Young ladies are not allowed to *receive* invitations until they have been submitted to the Principal or Governor.

It is hoped that persons *entitled* to call upon Students will adapt themselves to the hours of the Institution. Officers would not like to do oblige, but must refuse permission to Students to see their friends except in *special cases*.

SHOPPING.

It is desired that students should be supplied, if possible, with all necessary things before leaving home. To provide, however, for necessities that may occur, Students will be permitted to do shopping once a quarter, always accompanied by a teacher.

RELIGIOUS INSTRUCTION.

Bible-class every Sunday evening under the care of the Governor, in addition to family worship and the usual religious exercises at the daily opening and close of the school.

Earnest efforts will be made to produce a strong conviction of the paramount importance of personal religion.

ATTENDING DIFFERENT CHURCHES.

The Students attend those Churches selected for them by their Parents or Guardians; and all Students are required to attend on each Sabbath, unless excused.

If Students desire during the year to change their place of worship, permission will be given only under very unusual circumstances. If desired for any whim or subordinate reason it will in no case be granted.

The religious opinions of Students will be carefully guarded.

EXPENSES.

Board and Washing, per year,	\$140 00
Preparatory Department, per year,	20 00
Academic " " " " " "	24 00
Collegiate " " " " " "	32 00

Two dollars per year is charged to defray the expenses of care of School Rooms.

Two dollars per year will be charged each boarder to meet cost of attendance and expenses incurred not otherwise provided for.

EXTRA.

Instrumental Music (Piano, etc.,) per year,	\$32 00
Use of Instrument (one hour per day), " " " "	8 00
Drawing, " " " "	20 00
Painting in Water Colors, " " " "	24 00
" Oil " " " "	32 00
French, " " " "	16 00
German, " " " "	16 00
Latin, " " " "	8 00
Private Vocal Lessons, " " " "	32 00
Vocal Lessons in Class, " " " "	12 00

TABULAR STATEMENT.

Fees for Boarders per Year.	Before Christmas	After Christmas	Total.
No. 1.—Board \$140.00; Academic, \$24.00; School Rooms, \$2.00; fees for incidentals, \$2.00,	\$75.50	\$92.50	\$168.00
No. 2.—Same as No. 1, with Music, \$32.00; and use of instrument, \$8.00,	93.50	114.50	208.00
No. 3.—No. 1, with Drawing, \$20.00,	84.50	109.50	188.00
No. 4.—No. 2, with Drawing, \$20.00,	102.50	125.50	228.00
No. 5.—No. 2, with French, \$16.00 (or German (\$16.00).),	100.50	123.50	224.00
No. 6.—No. 2, with Painting, \$32.00,	108.00	132.00	240.00
No. 7.—No. 2, with Vocal Music (private lessons), \$32.00,	108.00	132.00	240.00
No. 8.—No. 2, with Vocal Music (in class), \$12.00.	99.00	121.00	220.00

By examining the foregoing table a student can determine which of the eight lines contains the list she intends to take. Use of Piano is charged according to number of hours per day, the table being for one hour. Lessons from Professor of Music are \$8.00 per year extra. Students taking Latin are charged Collegiate price. The above table is made out at the Academic rate. If Preparatory is taken, each total will be \$4.00 less, and if Collegiate, each total will be \$8.00 more, per year.

As shown by the above table, the expenses are graduated according to the number of extra branches taken during the year.

Half of the amount due before Christmas is to be paid on entering the school, and the other half in November. Half of the amount after Christmas is to be paid at New Year's, and the other half in April.

Students on entering should be provided with about \$5.00 to pay for text books, etc., and other text books and sheet music obtained afterwards will be paid for when purchased. Meals taken to Students' rooms are charged extra. The Fee for the Graduation Diploma is \$5.00.

20 per cent. discount is made to daughters of Clergymen of all denominations.

CALENDAR.

The Collegiate year consists of two sessions, the first closing at Christmas, and the other on the second day of June.

College opens,	- - -	Wednesday, Aug. 21.
Christmas Holidays begin,	- - -	Friday, Dec. 20.
College re-opens,	- - -	Friday, Jan. 4.
Year closes,	- - -	Monday, June 2.

There is no Easter vacation.

ADMISSION OF STUDENTS.

Pupils are admitted at any time, and are charged for their board in proportion to the time of their connection with the School, except at the close of the Session. No deduction will be made for absence during term. It is earnestly desired that Students should be present at the organization of the School, both at the beginning of the year and after the Christmas Holidays. No change in the classes can be made to accommodate those who are tardy in their return after the holidays. Tuition is received in four payments for the year. Pupils from a distance are required to board in the Institution, except in the case of those who have near relatives in town.

Whenever a pupil is entered in College, the Faculty consider that an implied contract is made between themselves and the patron, by which the latter is as much bound to continue the pupil in College until the close of the session as the Faculty are bound to instruct her for that time. Those who take away their daughters for a few days, without weighty reasons for such absence, not only impair the scholarship of their daughters, but impose unnecessary trouble upon the Faculty, and introduce a restlessness in the minds of all, very unfavorable to study.

LEAVING THE COLLEGE.

It is requested that definite and particular arrangements be made by Parents and Guardians, and indicated to the Governor of the Institution, respecting the leaving of Students at the close of the session, the time of their leaving, and the company with whom they shall leave.

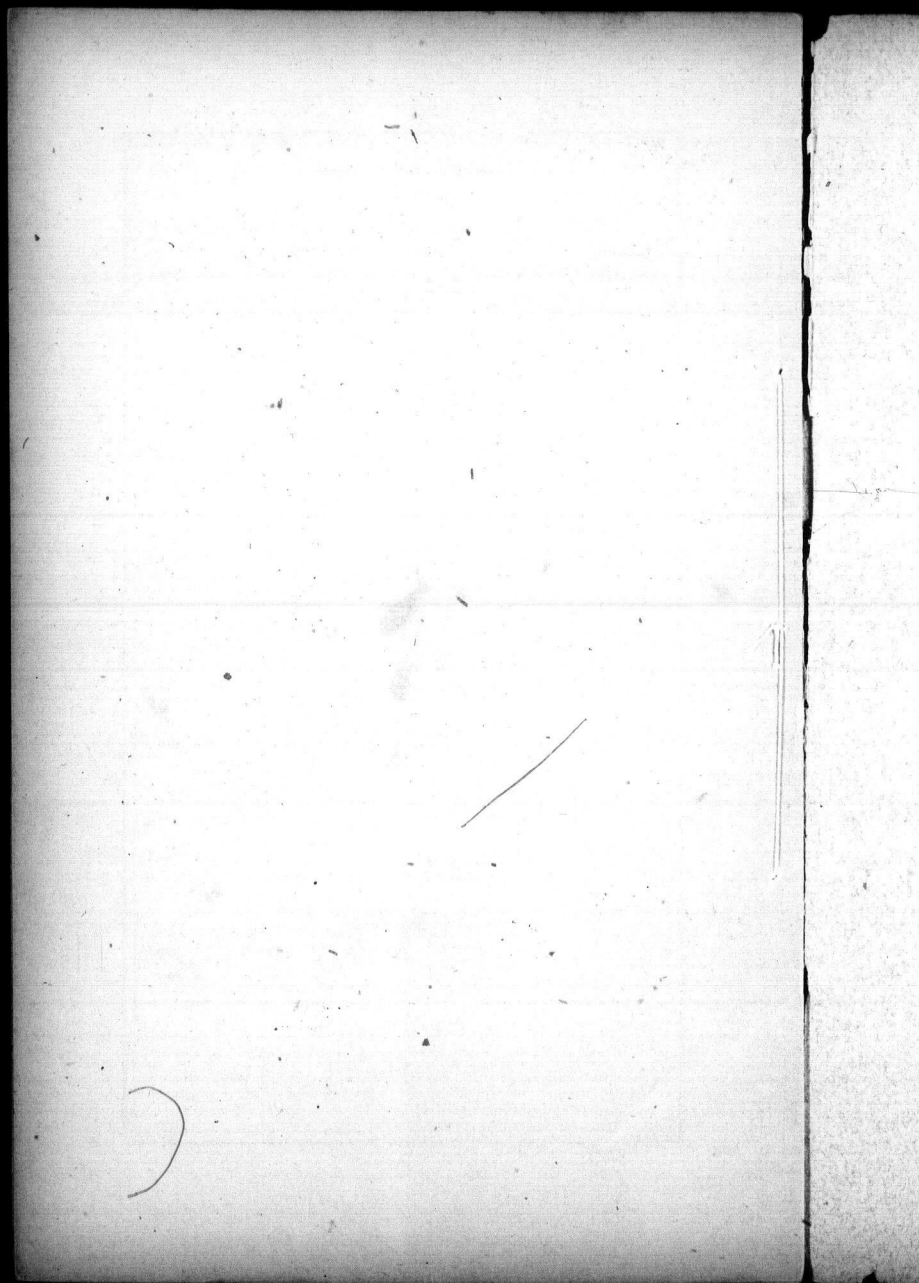
All payments of money due the College must be made before the Student leaves.

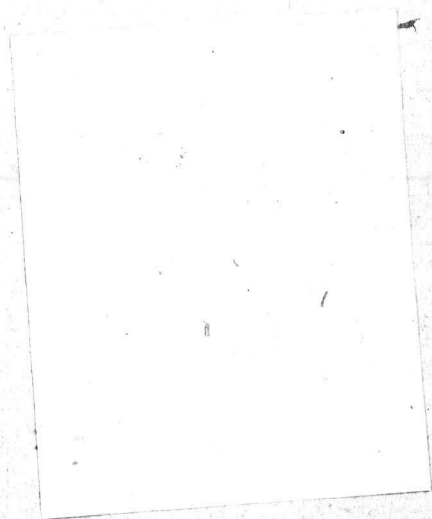
Notice of half a term must be given to the Governor before the removal of a Student.

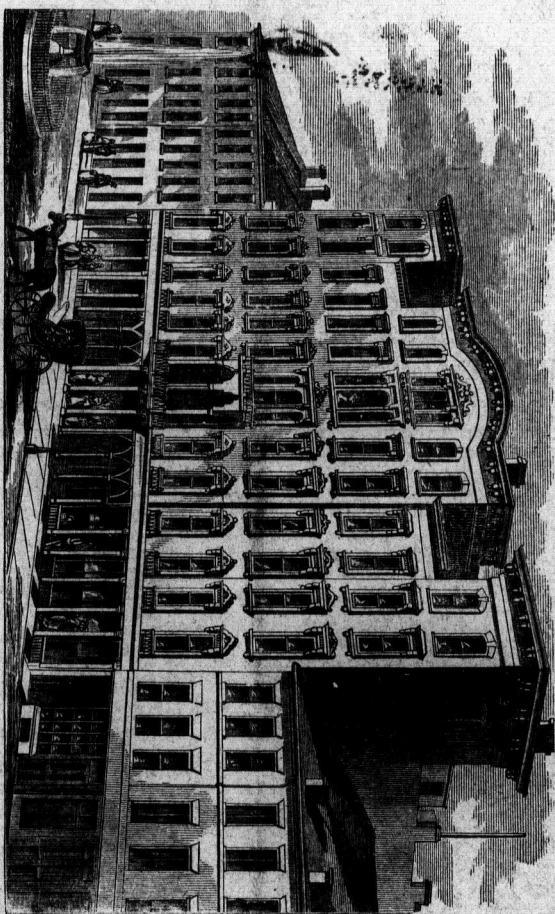
CORRESPONDENCE.

Letters respecting any of the departments of Instruction, the admission or dismissal of Students, their studies, etc., should be addressed to the Principal, Rev. S. D. RICE, D. D., directly, and not through the Student. Letters pertaining to the finances of the College, and applications for Circulars, to the Financial Secretary, Rev. W. P. WRIGHT, M. A.









WESLEYAN FEMALE COLLEGE, HAMILTON, ONT.