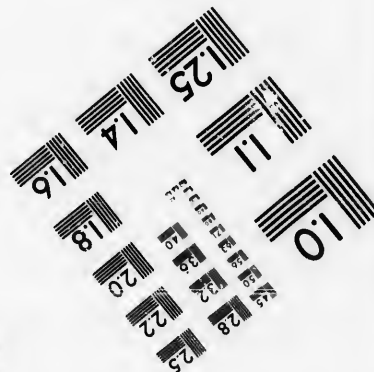
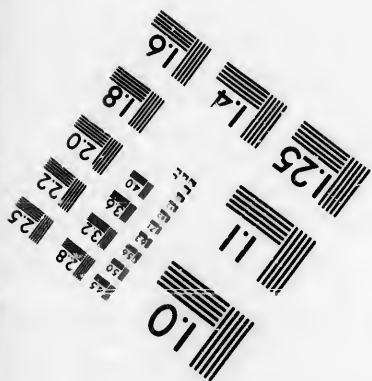
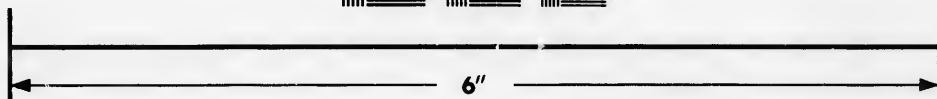
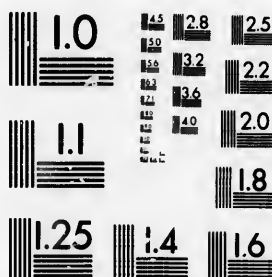


IMAGE EVALUATION TEST TARGET (MT-3)



Photographic Sciences Corporation

**23 WEST MAIN STREET
WEBSTER, N.Y. 14580
(716) 872-4503**

**CIHM/ICMH
Microfiche
Series.**

**CIHM/ICMH
Collection de
microfiches.**



Canadian Institute for Historical Microreproductions / Institut canadien de microreproductions historiques

© 1986

Technical and Bibliographic Notes/Notes techniques et bibliographiques

The Institute has attempted to obtain the best original copy available for filming. Features of this copy which may be bibliographically unique, which may alter any of the images in the reproduction, or which may significantly change the usual method of filming, are checked below.

L'Institut a microfilmé le meilleur exemplaire qu'il lui a été possible de se procurer. Les détails de cet exemplaire qui sont peut-être uniques du point de vue bibliographique, qui peuvent modifier une image reproduite, ou qui peuvent exiger une modification dans la méthode normale de filmage sont indiqués ci-dessous.

- ☒ Coloured covers/
Couverture de couleur
- ☐ Covers damaged/
Couverture endommagée
- ☐ Covers restored and/or laminated/
Couverture restaurée et/ou pelliculée
- ☐ Cover title missing/
Le titre de couverture manque
- ☐ Coloured maps/
Cartes géographiques en couleur
- ☒ Coloured ink (i.e. other than blue or black)/
Encre de couleur (i.e. autre que bleue ou noire)
- ☒ Coloured plates and/or illustrations/
Planches et/ou illustrations en couleur
- ☐ Bound with other material/
Relié avec d'autres documents
- ☐ Tight binding may cause shadows or distortion
along interior margin/
La reliure serrée peut causer de l'ombre ou de la
distorsion le long de la marge intérieure
- ☐ Blank leaves added during restoration may
appear within the text. Whenever possible, these
have been omitted from filming/
Il se peut que certaines pages blanches ajoutées
lors d'une restauration apparaissent dans le texte,
mais, lorsque cela était possible, ces pages n'ont
pas été filmées.
- ☒ Additional comments:
Commentaires supplémentaires:

- ☐ Coloured pages/
Pages de couleur
- ☐ Pages damaged/
Pages endommagées
- ☐ Pages restored and/or laminated/
Pages restaurées et/ou pelliculées
- ☒ Pages discoloured, stained or foxed/
Pages décolorées, tachetées ou piquées
- ☐ Pages detached/
Pages détachées
- ☒ Showthrough/
Transparence
- ☐ Quality of print varies/
Qualité inégale de l'impression
- ☐ Includes supplementary material/
Comprend du matériel supplémentaire
- ☐ Only edition available/
Seule édition disponible
- ☐ Pages wholly or partially obscured by errata
slips, tissues, etc., have been refilmed to
ensure the best possible image/
Les pages totalement ou partiellement
obscurcies par un feuillet d'errata, une pelure,
etc., ont été filmées à nouveau de façon à
obtenir la meilleure image possible.

Irregular pagination : [1] - 62, 65 - 66, 63 - 64, 69 - [70], 67 - 93 p.

This item is filmed at the reduction ratio checked below/
Ce document est filmé au taux de réduction indiqué ci-dessous.

10X	14X	18X	22X	26X	30X
<input type="checkbox"/>	<input type="checkbox"/>	<input type="checkbox"/>	<input checked="" type="checkbox"/>	<input type="checkbox"/>	<input type="checkbox"/>
12X	16X	20X	24X	28X	32X

The copy filmed here has been reproduced thanks to the generosity of:

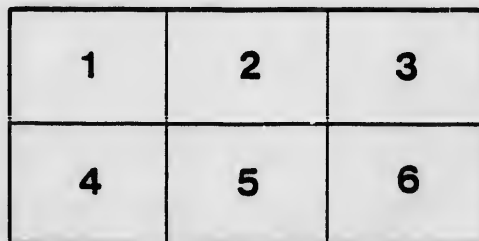
Seminary of Quebec
Library

The images appearing here are the best quality possible considering the condition and legibility of the original copy and in keeping with the filming contract specifications.

Original copies in printed paper covers are filmed beginning with the front cover and ending on the last page with a printed or illustrated impression, or the back cover when appropriate. All other original copies are filmed beginning on the first page with a printed or illustrated impression, and ending on the last page with a printed or illustrated impression.

The last recorded frame on each microfiche shall contain the symbol \longrightarrow (meaning "CONTINUED"), or the symbol ∇ (meaning "END"), whichever applies.

Maps, plates, charts, etc., may be filmed at different reduction ratios. Those too large to be entirely included in one exposure are filmed beginning in the upper left hand corner, left to right and top to bottom, as many frames as required. The following diagram illustrates the method:



L'exemplaire filmé fut reproduit grâce à la générosité de:

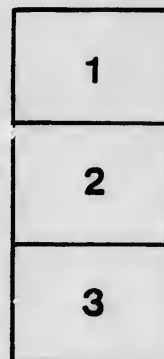
Séminaire de Québec
Bibliothèque

Les images suivantes ont été reproduites avec le plus grand soin, compte tenu de la condition et de la netteté de l'exemplaire filmé, et en conformité avec les conditions du contrat de filmage.

Les exemplaires originaux dont la couverture en papier est imprimée sont filmés en commençant par le premier plat et en terminant soit par la dernière page qui comporte une empreinte d'impression ou d'illustration, soit par le second plat, selon le cas. Tous les autres exemplaires originaux sont filmés en commençant par la première page qui comporte une empreinte d'impression ou d'illustration et en terminant par la dernière page qui comporte une telle empreinte.

Un des symboles suivants apparaîtra sur la dernière image de chaque microfiche, selon le cas: le symbole \longrightarrow signifie "A SUIVRE", le symbole ∇ signifie "FIN".

Les cartes, planches, tableaux, etc., peuvent être filmés à des taux de réduction différents. Lorsque le document est trop grand pour être reproduit en un seul cliché, il est filmé à partir de l'angle supérieur gauche, de gauche à droite, et de haut en bas, en prenant le nombre d'images nécessaire. Les diagrammes suivants illustrent la méthode.





Montreal Exposition



DIAMOND JUBILEE
YEAR

PRIZE LIST

AUGUST

19TH TO 28TH

1897





MONTREAL EXPOSITION COMPANY



❁ PRIZE LIST ❁

RULES AND REGULATIONS



SIXTH
ANNUAL EXHIBITION



OPENS

THURSDAY, 19TH

AND CLOSES

SATURDAY, 28TH AUGUST

... 1897 ...

PETER LYALL,
PRESIDENT.

S. C. STEVENSON,
MANAGER AND SECRETARY.

218 ST. LAWRENCE ST.

Montreal Exposition Company.



PATRON

His Excellency THE EARL OF ABERDEEN,

Governor General of Canada.

Officers for 1897.

President.—P. LYALL

First Vice-President.—H. PREVOST

Second Vice-President.—T. A. TRENHOLME

Hon. Treasurer.—W. EWING

Manager and Secretary.—S. C. STEVENSON

Board of Directors.

P. LYALL

H. PREVOST

T. A. TRENHOLME

W. EWING

R. AUZIAS-TURENNE

G. W. SADLER

S. J. DORAN

R. PREFONTAINE, M. P.

S. H. C. MINER

Directors Representing the Provincial Government,

HON. P. E. LEBLANC

D. PARIZEAU, M.P.P.

Members Ex-Officio.

The Hon. Commissioner of Agriculture of the Province of Quebec.

President of the Council of Agriculture of the Province of Quebec.

President of the Council of Arts and Manufactures of the Province of Quebec.

Montreal Exposition Company.



.. 1897 ..

COMMITTEES.

- Finance**—R. PREFONTAINE, M. P., Chairman, W. EWING, H. PREVOST, T. A. TRENHOLME, D. PARIZEAU, M. P. P., G. W. SADLER.
- Buildings and Grounds**—PETER LYALL, Chairman, G. W. Sadler, S. J. DORAN, R. AUZIAS-TURENNE, T. A. TRENHOLME, D. PARIZEAU, M. P. P.
- Horse**—S. J. DORAN, Chairman, JAMES A. COCHRANE, R. AUZIAS-TURENNE, COLIN MCARTHUR, L. MASSUE, D. McLACHLAN, A. L. WILLIAMS.
- Cattle**—T. A. TRENHOLME, Chairman, NAP. LACHAPELLE, JAMES JOHNSTON, JEREMIE DECARIE, HON. JOHN MCINTOSH, THOS. DRYSDALE, ARSENE DENIS, DANIEL DRUMMOND.
- Sheep and Swine**—D. PARIZEAU, M. P. P., Chairman, B. BEAUCHAMP, M. P. P., THOS. IRVING, DANIEL BRIMS, FRs. ROBERT, E. C. BROSEAU, ADOLPHE OUIMET, T. D. MCCALLUM, J. G. MAIR, PETER LAING.
- Poultry**—H. PREVOST, Chairman, THOS. HALL, F. ROLLAND, J. R. LUMSDEN, J. H. CAYFORD, D. SEUTENS.
- Dairy**—R. AUZIAS-TURENNE, Chairman, J. A. VAILLANCOURT, MILTON McDONALD, M. P. P., JOS. BEAUBIEN, A. A. AYER.
- Agriculture and Horticulture**—WM. EWING, Chairman, MATHIAS MOODY, ARTHUR VINCENT, JOS. DESLAURIERS, JOHN NEWMAN, JR., J. O. PERRAS, A. MCLAURIN, JOS. DELORME, JOHN MCINTOSH.
- Agricultural Implements**—G. W. SADLER, Chairman, WM. EWING, J. H. STANTON, H. MOODY, L. BESSETTE, R. J. LATIMER.
- Industrial**—L. I. BOVIN, Chairman, H. PREVOST, S. H. C. MINER, G. W. SADLER, HON. J. D. ROLLAND, COLIN MCARTHUR.
- Reception**—HON. P. E. LEBLANC, Chairman, R. PREFONTAINE, M. P., R. AUZIAS-TURENNE, G. W. SADLER, H. PREVOST.

Montreal Exposition Company

PROVINCIAL EXHIBITION

..1897..

OPENS 19th AND CLOSES 28th AUGUST.

...INTRODUCTION...

The Directors of the Montreal Exposition Company have decided to hold their *Sixth Provincial Exhibition* in Montreal from *Thursday*, the 19th, to *Saturday*, the 28th, August next.

In the latter part of July 1896 a disastrous fire occurred on the Grounds which destroyed the Crystal Palace, (which was originally erected on the occasion of the visit of H. R. H. the Prince of Wales, to Canada in 1860), the Machinery Hall and other buildings to the number of ten in all. Notwithstanding the serious loss and inconvenience to which the Company was thus put, a new and commodious Industrial Building was at once erected and the Exhibition was held on the date originally fixed. It is the intention of the Company to erect such other buildings as may be required in the future on the most improved and modern plans.

This being the Diamond Jubilee year, the Directors confidently trust that manufacturers and the public generally, will lend their hearty assistance in contributing towards the success of the Exhibition and thus aid making it an event worthy of the occasion.

It will be noted that the date of the Exhibition has been somewhat advanced, and this change has been made with a view of affording greater convenience to exhibitors and in the hope of securing more favorable weather.

The large number of visitors who come to the Exhibition, presents a strong inducement for leading firms to make an elaborate display of their manufactures.

Even if no pecuniary advantage be gained, the Directors earnestly trust that for the credit of the City and the Province that our important industries will be worthily represented.

The Directors confidently hope that all will assist in making the Montreal Exhibition a permanent and progressive institution.

The Directors will be pleased to receive any special prizes or contributions towards increasing the Premium List, as well as any suggestions that may tend to increase the importance and usefulness of the Exhibition.

General Arrangements.

The Exhibition will be open to the public on Thursday 19th August, at 7 a. m., and continue open each day and evening, except Sunday 22nd, to 10 p.m.

The Exhibition will be closed on Saturday, 28th August, at noon.

The Grounds and Buildings will be open for Exhibitors and their assistants from Monday, 2nd August, to Wednesday the 18th August, from 7 a. m. to 6 p. m., to make preparations and to place their exhibits in position.

A number of special attractions, in addition to the regular Exhibition, of which particulars will be subsequently given, will be provided for the enjoyment of visitors.

Every facility will be afforded and every courtesy extended to exhibitors, but no responsibility for transportation, damages, accidents or loss of any kind will be assumed by the Company.

No removals of any kind will be allowed before the close of the Exhibition except by special permission.

The Superintendents will give all information required in their respective Departments.


All officers will be designated by proper badges.

Special Prizes.

Special Prizes are mentioned in connection with the Departments to which they belong.

General Rules and Regulations.

Intending exhibitors and visitors are particularly requested to note carefully the following Rules and Regulations governing the Exhibition, which will be, in all cases, strictly enforced.

 When you have done with this book, please pass it around among your neighbors.

Rates of Admission.

1. The gates will be open at 7 a. m. each day.

Adults \$.25 cents.

Children, under 12 years of age.15 "

Children, " " " (2) . . .25 "

Exhibitor's ticket. 1.00

Vehicles, 50c. each occupant in addition .25 "


 Tickets can be obtained at the entrance to the Grounds.

Entry Cards will be furnished for each animal or article, which will admit the attendant bringing them to the Grounds for exhibition. Afterwards such attendants must be provided with the proper passes.

Exhibitors paying entrance fees of \$10 or upwards, will receive one exhibitor's ticket free.

Other exhibitors may purchase at the Manager's Office an "*Exhibitors*" ticket for \$1.00 admitting him twice each day.

Exhibitors may obtain the Necessary Special Passes on applying to the Superintendents on the Grounds. Each pass will bear the name of the person to whom it is issued and if presented by any other person will be forfeited.

 No attendant's ticket will be issued to any exhibitor whose entrance fees amount to less than one dollar.

Entries.

Exhibitors will confer a great favor by making their entries at AS EARLY A DATE AS POSSIBLE.

All entries must be made on printed forms, which may be obtained, free of charge from the Secretary, from whom also copies of the Prize List can be had. These forms are to be filled up and signed by the exhibitor and sent to the Secretary on or before Monday 16th August. Any entries that may be accepted after this date *will be charged double fees.*

Exhibitors will also take notice that it is *absolutely required* that the entries be made on or before the date above mentioned, in order to afford sufficient time to examine the entry papers, apportion space, forward entry tickets, and to correspond with parties, when necessary.

The entry fee must, in all cases, be forwarded with the entry. No entry will be accepted unless this is done. Fees should be sent by express or post office order or bills in registered letter. *Postage stamps are not desirable*, but if sent should not be above the denomination of 3 cents.

Entry Fee must be paid for each and every section in which an animal is entered for competition, except where otherwise provided.

No changes will be allowed any exhibitor after 16th. August.

No entries will be accepted after the opening of the Exhibition.

When entries are made, great care should be observed to have the name of the exhibitor and the *Post Office* address *in full*, with the street and number if in the city.

After entering each animal or article, exhibitors will be supplied with a card specifying the class, section and number of entry, *which card must remain attached to the animal or article during the Exhibition.*

No person shall be allowed to enter for exhibition more than one specimen in any one section of a class, except by special permission. This rule not to apply to animals, but to all kinds of grain, vegetable products, etc., in which each additional article would necessarily be similar to the first.

In the *Live Stock* Classes the entries must, in every instance, be made in the name of the *bona fide* owner. If any person shall exhibit an animal of which he is not the *bona fide* owner, he shall forfeit any premium which may be awarded him.

In all the other Classes the entries must be made in the names of the producers themselves or their duly authorized agents.

Exhibitors intending to compete for "specials prizes" offered, must enter in regular form.

In all cases the right is reserved to reject entirely or accept conditionally, any entry or application ;

Exhibitors must make themselves acquainted with the Prize List and Regulations, and be sure to which classes and sections their entries properly belong.

Parties desiring the privilege to sell must make special arrangements with the Manager.

EXTRA ENTRIES:—Every article must be entered under some one of the sections in the regular Premium list, when possible ; but if any article is not enumerated, it may then be entered in the class with which it most nearly corresponds, under the heading *extra*.

Entry Fees.

The charges for exhibiting are as follows :

LIVE STOCK.

HORSES —Entry Fee :	\$1.00 per head	Stalls free.
CATTLE —	" 50c. "	" "
SHEEP —	" 25c. "	Herd \$1.00.
SWINE —	" 25c. "	" "
POULTRY —	" 25c.	Pens \$1.00.
PIGEONS —	" 15c.	" "

DAIRY DEPARTMENT—Entry Fee : 25c. per section.

AGRICULTURAL PRODUCTS—Ten entries and under, 50c ; ten to fifteen entries, \$1.00 ; over fifteen entries, \$2.00.

NATURAL HISTORY SPECIMENS—Free.

INDUSTRIAL DEPARTMENT.

AGRICULTURAL IMPLEMENTS, 25c. each article.

STOVES, 25c. for each up to five, over five 10c. each.

CARRIAGES, 25c. each vehicle.

PIANOS AND ORGANS, 25c. each instrument.

LADIES' WORK AND DOMESTIC MANUFACTURES—Five entries and under, 50c. five to 15 entries \$1, over 15 entries \$2.

For **Manufactures** and all other Classes than those above mentioned the fee for each class will be \$1.

Fees must in all cases accompany the entry.

Application for Space.

Applications for space required in all Departments must be made in accordance with the Regulations.

Plans of exhibiting space can be seen at the office of the manager.

Parties desirous of obtaining prominent locations should make early application.

Space is given free, but the Company reserves the right to sell such space as considered advisable. If a creditable display is not maintained in any space that may be sold or allotted, the space may be declared forfeited.

The leaving of a sign or stand does not entitle exhibitors to occupy the same space on future occasions.

Particular attention is called to the importance of having the entries made in proper time, otherwise no promise of space can be given.

Exhibitors' Duties and Privileges.

All exhibits, except Live Stock and Poultry, *must be in position by 6 p. m. on Wednesday 18th August*, and the latter must be on the Grounds by 10 a. m. on Monday, 23rd August.

Exhibitors on arriving with their exhibits will apply to the Superintendent of the Department, by whom they will be informed where these are to be placed.

Arrangements have been made with the Grand Trunk and Canadian Pacific Railways, by which all exhibits will be returned *free of charge* to the Stations from which they were shipped, provided they have not changed ownership and that the charges have been prepaid to Montreal.

Exhibitors in all cases must provide for the delivery of their exhibits on the Grounds.

Articles not accompanied by their owners may be addressed to the Superintendent of the Department on the Grounds; all charges on these must be prepaid.

Exhibitors are expected, at all times, to give the necessary attention to their exhibits, and at the close take entire charge of the same.

All exhibits must remain uncovered while the Exhibition is open to the public.

Every facility will be afforded for the sale of goods, but no articles can be removed during the Exhibition except by special arrangement.

No persons shall be allowed to see, or be informed of the number or kinds of entries made, except the proper officers.

All Signs, Stands or structures of any kind erected by exhibitors must be taken away on or before the 1st. of October, 1897, otherwise they become the property of the Exposition Company.

All cases and packing materials must be cleared away before the opening.

Judges and Judging.

The Judges will be appointed by the Board of Directors.

Judges, when reporting to the Superintendent of Department, will receive badges. Superintendents will point out to the Judges the articles or animals to be inspected, and cause the same to be displayed in their proper places and at the proper time.

No person will be allowed to act as Judge who is in any way known to be interested in the animals or articles to be examined.

Judges are not to award prizes other than those mentioned in the Prize list, but may distinguish exhibits deserving of notice which have not received prizes, by a special commendation in the Judges' Book. This will not entitle the exhibitor to any money payment.

In the absence of competition in any section, or if the exhibits be of inferior quality, the Judges will award only such premium as they think advisable, and they may exercise their discretion as to whether they will award the first, second, third, or *any* premium.

Each award must be plainly written on the blank space opposite the number of the entry.

The Judges will sign and hand in their awards to the Superintendents as soon as possible. The reports should be concise and full, and should contain any suggestions or recommendations that experience or circumstances may suggest.

It is desired that all the Judges of each class go *together*, and not singly, to hand in their Report, in order that cases of error or doubt may be jointly considered and promptly rectified.

Any person who shall attempt to interfere with the Judges while in the discharge of their duties, or who shall afterwards on the Exhibition Grounds use any contemptuous or abusive language to any Judge, referee or other person engaged in an official manner, shall forfeit the right to any premium to which he might otherwise be entitled. Judges are particularly requested to immediately report any breach of this rule.

In case of Fraud, the Directors have the power to withhold any prizes awarded.

No person shall be permitted in the Horse or Cattle Rings during the time of judging except the Judges, persons in charge of the animals, members of the Committee and members of the Press.

Protests.

Protests must be made in *writing*, and must state the class and section of the entry referred to, and must give definitely and concisely the ground of protest.

The envelope containing protest must be endorsed with the number of class and section to which it refers. The Directors will decide in all such cases, *and their decision will be final*.

All protest must be made *within twenty-four hours of the Judges' award*, after which no protest will on any account be received.

No protest will be entertained unless accompanied by a deposit of \$5, which will be forfeited if the protest is not sustained.

Miscellaneous.

The Directors reserve the right to prescribe and regulate all matters pertaining to the harmony and attractiveness of the Exhibition.

Each Department will be under the control of a special Committee presided over by one of the Directors.

All signs will be under the control of the management; those which obstruct the view and light will not be permitted.

Exhibits which cause any obstruction must be re-arranged when so ordered.

The wholesale distribution of hand-bills or other advertising matter that may cause a nuisance will not be allowed. Neat cards or folders are more effective and apt to be carried away by visitors.


All Prize cards which have been awarded must remain attached to the exhibit during the Exhibition, otherwise the premium will be forfeited.

The Contractors for refreshments, fodder and all other articles must furnish their supplies before 8.30 a.m. each day. After this hour all must pay 50c. each vehicle for each admission.

Lessees of booths and stands will be protected as far as possible, but will forfeit their claims and rights when abusing them.

Pedlars or salesmen of any articles, not entered and placed on exhibition, must first procure *permits* from the Manager, and shall present them when required.


The officials in charge shall enforce these Rules, and also prevent all kinds of gambling or mountebank performances, and regulate or prevent huckstering or trafficking in fruits, goods, wares or merchandise on the Exhibition Grounds.

 All questions not covered or provided by these Rules shall be referred to the Manager.

Fire and Police Protection.

Every precaution will be taken to guard against fire, and with the care taken, it is believed that the danger is reduced to a minimum, but exhibitors requiring insurance must give the matter their *personal* attention.

An ample police force will be on duty night and day during the Exhibition, but exhibitors are expected to exercise proper supervision over their several exhibits. Small and valuable articles should be securely locked up.

 The Company will not be responsible for any loss or damage by fire, theft or any other casualty.

It is understood that all parties exhibiting do so after having taken cognizance of and assenting to all the foregoing Regulations and arrangements.

Railways, Steamboats and Customs.

Favorable arrangements have been made with the leading Railway Companies for the conveyance of passengers and exhibits to and from the City at reduced rates.

Arrangements have also been made with the Customs Department for the admission of articles from foreign countries for exhibition, free of duty, on giving the customary bond.

Express, Telegraph and Post Offices.

The Telegraph and Express Companies will have offices on the Grounds. A Post Office for the delivery and despatch of letters will be provided.

LIVE STOCK DEPARTMENT.

All Live Stock must be on the Grounds by 10 a. m. on Monday 23rd August.

The ages of all cattle will be calculated for the present year from the 1st August. Exhibitors will please take notice that in future exhibitions, ages will be calculated from the 1st January.

Good accommodation is provided for Live Stock. Straw for bedding of animals and feed for Poultry, will be provided free of charge.

Hay and provender will be for sale on the Grounds at city prices. Any complaints of excessive charges will immediately be attended to. Exhibitors who bring their own provender must have it tightly done up in bundles.

Animals not ready to be shown at the proper time and place will forfeit the right of competition.

Smoking will not be allowed in any stall or stable.

See also page for Horses.

“ “ for Cattle.

“ “ for Sheep and Swine.

“ “ for Poultry.

Payment of Prizes.

1. **PRIZE COLORS.**—The award of premiums will be designated as follows: First Premium, by a red ribbon or card; Second Premium, by a blue ribbon or card; Third Premium, by a green ribbon or card; Fourth Premium, by a yellow ribbon or card; Fifth Premium, by a salmon ribbon or card; Sixth Premium, by a rose ribbon or card.

The Treasurer will be prepared to commence paying the premiums on the grounds, for all classes of exhibits, on Friday, the 27th August at 1 p. m., after the 30th August, at the office No. 218 St. Lawrence Street, Montreal.

All persons to whom prizes are awarded must apply for them to the Secretary on or before 15th November, 1897, or the prize money will be forfeited.

Enquiries.

Communications and enquiries pertaining to the Exhibition should be addressed to the Manager and Secretary, S. C. Stevenson, 218 St. Lawrence Street, Montreal. During the Exhibition, enquiries should be made at the Bureau of Information or of the different Superintendents. Any officer applied to will either give the information required or refer the applicant to the proper official. The officers will be known by their respective badges.

If your neighbours express a desire for a copy of the Prize List, send their address at once on a postal card, and copy will be mailed.

The Press.

Members of the Press are cordially invited to the Exhibition. Ample accommodation will be provided for them, and all necessary information promptly furnished. Editors are requested to notify the Manager three weeks previous to the Exhibition if they intend to visit the Exhibition, in order that tickets for them may be forwarded.

How to reach the Grounds, Accommodation, etc.

The Grounds are most beautifully located on Mount Royal Avenue, in the northern portion of the city, affording a splendid view of Mount Royal and the surrounding country. Visitors wishing to ascend the Mountain can do so by means of the Park Incline Railway.

The Exhibition is easy of access, being an agreeable walk from the city, or can be reached in a few minutes by the several lines of Electric railway.

Visitors will find on the Grounds everything necessary for the convenience and comfort of young or old.

Ample Restaurants and Lunch Rooms, managed by experienced caterers and under the supervision of the Directors, will provide meals and refreshments during the Exhibition.

Wash-rooms and parcel-rooms for the deposit of satchels, cloaks, etc., and in charge of responsible parties, are conveniently located on the Grounds for the accommodation of visitors.

The Hotels of the city, ample for any occasion, will not exceed their regular rates; and the civic authorities will co-operate with the officers of the Company in every practical manner to ensure the safety and comfort of visitors.

Working Dairy.

An important feature of the Exhibition will be the *Working Dairy*, in which the most recent and improved Dairy Utensils will be shown and their various uses explained and illustrated.

Horticultural Show.

Arrangements have been made with the Montreal Horticultural Society and Fruit Growers' Association of the Province of Quebec for a Grand Floral and Fruit Display, which will doubtless prove one of the most attractive features of the Exhibition, competition is opened to the world.

War Ships.

The reply received from the Minister of Marine and Fisheries renders it highly probable that one or more of H. M. war vessels will be in Port and free to visitors during the Exhibition.

Secretary's Special Requests.

Please read the foregoing rules carefully.

Make out entry papers in accordance therewith.

Be particular to send entries as early as possible. Do not be later than 16th. August, but rather before, as there may be corrections required which may necessitate our writing you.

Be particular to give Post Office address as complete as possible.

Be sure and enclose entry fees.

If your neighbors express a desire for a copy of the Prize List, send their address at once on a post card, and copy will be mailed.

If you have no use for this Prize List, pass it around your friends.

Remember the Fair Dates, 19th to 28th August.



PREMIUM LIST

OPEN TO THE WORLD

LIVE STOCK DEPARTMENT



...HORSES...

COMMITTEE:

S. J. DORAN, *Chairman.*

MESSRS. R. AUZIAS-TURENNE COLIN MCARTHUR, A. L. WILLIAMS, Longueuil.
JAS. A. COCHRANE, Hillhurst. Dn. McLACHLAN, Petite Côte. L. MASSUE, Varennes.

ENTRIES CLOSE MONDAY, 16th AUGUST.

Entrance Fee, \$1.00 per Head, Stalls Free. Matched Pairs, \$2.00.



All horses must be on the Grounds by 10 a. m. on MONDAY, 23rd August.

The ages of all horses will be calculated from the 1st of January.

Entry Fee must be paid for each and every section in which an animal is entered for competition, except for medal.

In making entries, the owners' name and address in full, *the name of animal* (if named), and the age, must be given.

No entries will be accepted after the opening of the Exhibition.

Entries positively close 16th August

In all Thoroughbreds classes, full pedigree, properly certified, must be produced on the Grounds if required, and the number of registration in the Stud Book must be given on the entry form. No animals will be allowed to compete as pure bred unless they possess regular stud pedigrees. Judges on the Grounds will have the right to demand certificates of registration.

An animal may be exhibited in as many classes as the owner may choose, where the same may be eligible, but for every time the same is re-entered the regular entrance fee will be charged.

A Canadian bred horse shall be understood to be a horse that is foaled in Canada.

All animals must be entered in the names of their *bona fide* owners; should doubts arise, the Judges may require affidavits of ownership from the exhibitor.

Special rules governing the exhibit of Horses in the Horse Ring will be made at the time of Exhibition, and all exhibitors will be required to conform to the same.

Great care must be taken to enter each horse in its proper class, as no alterations can be made after the entries close.

In each section where there is only one exhibitor, not more than one prize will be awarded.

All horses on exhibition MUST be brought out for inspection, whenever called out by the official appointed to attend to that duty.

In the absence of competition in any section, or if the exhibit be of inferior quality, the Judges will award only such premiums as they think advisable, and they may exercise their discretion as to whether they will award *any* premium.

Stalls will not be allotted until horses arrive on the Grounds.

Each stall will be amply provided with straw at the opening of the exhibition.

All stalls must be cleaned out before 7 a. m., so that refuse can be cleared away before arrival of visitors.

Smoking will not be allowed in any stall.

Stalls must be open from 9 a.m. to 6 p.m.

Exhibitors will not be allowed to use stalls for storing forage, and the Company shall at all times have the right of making use of stalls thus occupied.

Judging will commence on MONDAY, 23rd August.

Exhibitors, if required, must produce a certificate from a Public Weighing Office, giving the weight of any horse exhibited at any time during the Exhibition.

Horses must be shown when, and in such a manner as the Judges may require or allow.

Exhibitors who may desire to take their horses home at night will be allowed to do so on depositing \$5 with the Superintendent as a guarantee for the return of the animal next morning. If the horse be not returned and permit renewed by ten o'clock the next morning, the amount deposited will be forfeited to the Company.

Non-compliance with any of these rules, or the general rules of the Company, on the part of any exhibitor or his employee, may incur the forfeiture of any premium awarded.

All Live Stock will be permitted to leave the grounds after 4 p.m. on Friday, 28th August.

Entries positively close 16th August

The management may call for the production of any or all animals for review or other purposes at any time during the Exhibition. Any exhibitor refusing to comply with such order will forfeit his right to compete for or receive any premium which may be awarded.

A GRAND PARADE OF LIVE STOCK

WILL TAKE PLACE DAILY AT 2 P. M.

See also General Rules at front of Prize List, page 10.


JUDGING WILL COMMENCE ON MONDAY, 23RD AUGUST.

Class 1.—Thoroughbred Horses.

(Pedigree to be produced.)

SEC.		1st.	2nd.	3rd.
1.	Stallion, 4 years old and upwards, best calculated to improve the breed of horses in Canada	\$25	\$18	\$10
2.	Stallion, 3 years old	10	7	5
3.	Stallion, 2 years old.	8	6	4
4.	Yearling Colt, entire	7	5	3
5.	Stallion, any age	Medal.		
6.	Mare or Gelding, 4 years old and upwards	10	7	5
7.	Filly, 3 years old	8	6	4
8.	Filly, 2 years old	7	5	3
9.	Yearling Filly or Gelding	6	4	2
10.	Brood Mare with Foal by her side.	25	18	10
11.	Foal of 1897.	7	5	3
12.	Best Mare, any age	Medal.		

Class 2.—Roadster Horses.

 In entering for this class, where the height is specified, exhibitors should be particularly careful to see that their horses are entered in the right sections.

SEC.		1st.	2nd.	3rd.
1.	Stallion, 4 years old and upwards, not less than 15½ hands.	\$18	\$10	\$7
2.	Stallion, 3 years old.	10	7	5
3.	Stallion, 2 years old.	8	6	4
4.	Yearling Colt, entire	7	5	3
5.	Stallion, any age	Medal.		
6.	Gelding, 3 years old.	10	7	5
7.	Filly, 3 years old	8	6	4
8.	Gelding, 2 years old.	7	5	3
9.	Filly, 2 years old	7	5	3
10.	Yearling Filly or Gelding	6	4	2
11.	Brood Mare with Foal by her side.	18	10	7
12.	Foal of 1897.	7	5	3

Entries positively close 16th August

SEC.	1st.	2nd.	3rd.
18. Pair matched horses (Gelding or Mare) in harness, 15½ hands and over	20	12	8
14. Single horse (Gelding or Mare) in harness, 15½ hands and over.	12	8	6
15. Best Mare or Gelding, any age	Medal.		

Class 3.—Carriage Horses.

SEC.	1st.	2nd.	3rd.
1. Stallion, 4 years old and upwards, 16½ hands and over . . .	\$20	\$12	\$8
2. Stallion, 3 years old.	15	10	7
3. Stallion, 2 years old.	12	8	6
4. Yearling Colt, entire	10	7	5
5. Stallion, any age	Medal.		
6. Pair of Carriage Horses Matched or Cross-Matched (Mares or Geldings) 15½ hands and over.	20	12	8
7. Gelding, 3 years old.	15	10	7
8. Filly, 3 years old	12	8	6
9. Gelding, 2 years old.	10	7	5
10. Filly, 2 years old	10	7	5
11. Yearling, Filly or Gelding	8	6	4
12. Foal of 1897.	7	5	3
13. Single Carriage Horse (Gelding or Mare), in harness, not less than 15½ hands	15	10	7
14. Best Mare, any age	Medal.		

Class 4.—Hunter and Saddle Horses.

SEC.	1st.	2nd.	3rd.
1. Saddle Horse (Gelding or Mare)	\$20	\$12	\$8
2. Hunter (heavy weight), up to 11 stone	20	12	8
3. Hunter (light weight), up to 11 stone	20	12	8
4. Ladies' Saddle Horse.	20	12	8
5. Best Saddle, Hunter or Ladies' Horse	Medal.		

Class 5.—Draught Horses (under 1350 lbs.)

SEC.	1st.	2nd.	3rd.
1. Mare or Gelding, 4 years old and upwards	\$20	\$12	\$8
2. Filly or Gelding, 3 years old	12	8	6
3. Filly or Gelding, 2 years old	10	7	5
4. Yearling, Filly or Gelding	10	7	5
5. Brood Mare, with Foal of the same breed by her side. . . .	18	10	
6. Matched Team (Geldings or Mares), in harness	18	10	7
7. Best Mare or Gelding, any age	Medal.		

Entries positively close 16th August

Class 6.—Heavy Draught Horses (1350 lbs. and over.)

SEC.		Exclusive of Pure bred Horses.		
		1st.	2nd.	3rd.
1.	Heavy Draught Stallion, 4 years old and upwards	\$20	\$12	\$8
2.	Stallion, 3 years old.	12	8	6
3.	Stallion, 2 years old.	8	6	4
4.	Heavy Draught Stallion, any age	Medal		
5.	Filly, 3 years old.	8	6	4
6.	Filly, 2 years old.	7	5	3
7.	Span, Mares or Geldings.	18	10	7
8.	Brood Mare with Foal by her side.	18	10	7
9.	Single Mare or Gelding in harness.	10	7	5

Class 7.—French Coach Horses.

Must be registered in the French Coach Stud Book of America, or in Stud Book of France.

SEC.		1st.	2nd.	3rd.
1.	Stallion, 4 years old and upwards	\$20	\$12	\$8
2.	Stallion, 3 years old.	18	10	7
3.	Stallion, 2 years old.	12	8	6
4.	Yearling Stallion	10	7	5
5.	Filly, 3 years old.	18	10	7
6.	Filly, 2 years old.	12	8	6
7.	Yearling, Filly or Gelding	10	7	5
8.	Brood Mare, with Foal of same breed by her side	20	12	8
9.	Foal of 1897	8	6	4
10.	Best Mare, any age	Medal.		

Class 8.—Clydesdales—(Imported or Canadian Bred.)

SEC.		(Pedigree to be produced.)			
		1st.	2nd.	3rd	4th.
1.	Stallion, 4 years old and upwards	\$20	\$18	\$10	\$7
2.	Stallion, 3 years old	18	10	7	5
3.	Stallion, 2 years old	12	8	6	4
4.	Yearling Colt, entire	10	7	5	3
5.	Stallion, any age	Medal.			
6.	Filly, 3 years old	12	8	6	4
7.	Filly, 2 years old	10	2	5	3
8.	Yearling, Filly or Gelding	8	6	4	2
9.	Brood Mare, with Foal of same breed by her side	18	10	7	5
10.	Foal of 1897	8	6	4	2
11.	Span of Clydesdales (Geldings or Mares)	20	18	10	7
12.	Best Mare, any age	Medal.			
13.	Best Canadian Bred Clydesdale Stallion, any age, recorded in the Clydesdale Stud Book of Canada	20	12	8	
14.	Mare, with two of her progeny, all to be <i>bona fide</i> the property of the exhibitor	Medal.			

Entries positively close 16th August

Class 9.—Percherons—(Imported or Canadian Bred.)

(Pedigree to be produced.)

SEC.		1st	2nd.	3rd.	4th.
1.	Stallion, 4 years old and upwards	\$20	\$18	\$10	\$7
2.	Stallion, 3 years old	Gold Medal.			
	(Recorded in the Percheron Stud Book of Canada.)				
	(Gold Medal presented by Canadian Produce Company, Montreal.)				
3.	Stallion, 2 years old	12	8	6	4
4.	Yearling Colt, entire	10	7	5	3
5.	Stallion, any age	Medal.			
6.	Filly, 3 years old	12	8	6	4
7.	Filly, 2 years old	10	7	5	3
8.	Yearling, Filly or Gelding	8	6	4	2
9.	Brood Mare, with Foal of some breed by her side . .	18	10	7	5
10.	Foal of 1897	8	6	4	2
11.	Span of Percheron Horses (Geldings or Mares) . . .	20	18	10	7
12.	Best Mare, any age	Medal.			
13.	Mare, with two of her progeny, all to be <i>bona fide</i> the property of the exhibitor	Medal.			

Class 10.—Canadian Horses.

Must be entered in the Canadian Stud Book or no prize will be awarded.

This class includes that hardy breed of horses known under the name of "Canadian Horses," whose principal features are an Arab head, a long mane, good action of the knees, round quarters, and generally a hardy constitution, and descendent from the early importations from Brittany and Normandy.

SEC.		1st.	2nd.	3rd.
1.	Stallion, 4 years old and upwards	\$20	\$15	\$10
2.	Stallion, 3 years old	18	20	7
3.	Stallion, 2 years old	12	8	6
4.	Yearling Stallion	10	7	5
5.	Filly, 3 years old	18	10	7
6.	Filly, 2 years old	12	8	6
7.	Yearling, Filly or Gelding	10	7	5
8.	Brood Mare, with Foal of same breed by her side	20	12	8
9.	Foal of 1897	8	6	4
10.	Best Mare, any age	Medal.		

Class 11.—English Shire Horses.

(Pedigree to be produced.)

SEC.		1st.	2nd.	3rd.
1.	Stallion, 4 years old and upwards	\$20	\$12	\$8
2.	Stallion, 3 years old.	18	10	7
3.	Stallion, 2 years old.	12	8	6
4.	Yearling Colt, entire.	10	7	5
5.	Stallion, any age	Medal.		

Entries positively close 16th August

SEC.

	1st.	2nd.	3rd.
6. Filly, 3 years old	18	10	7
7. Filly, 2 years old	12	8	6
8. Yearling, Filly or Gelding	10	7	5
9. Brood Mare, with Foal of same breed by her side	20	12	8
10. Foal of 1897	8	6	4
11. Span (Geldings or Mares)	20	12	8
12. Best Mare, any age	Medal.		

Class 12.—Sutfolk Punch Horses.*(Pedigree to be produced.)*

SEC.

	1st.	2nd.	3rd.
1. Stallion, 3 years old and upwards	\$20	\$18	\$8
2. Stallion, 2 years old	18	10	7
3. Yearling Colt	10	7	5
4. Stallion, any age	Medal.		
5. Mare, 5 years old and upwards	20	12	8
6. Filly, 2 years old	12	8	6
7. Yearling, Filly or Gelding	10	7	5
8. Brood Mare, with Foal of same breed by her side	20	12	8
9. Foal of 1897	8	6	4
10. Matched team (Geldings or Mares), in harness	20	12	8
11. Best Mare, any age	Medal.		

Class 13.—Standard Bred Horses—Trotters.*(Pedigree to be produced.)*

SEC.

	1st.	2nd.	3rd.
1. Stallion, 4 years old and upwards	\$20	\$12	\$8
2. Stallion, 3 years old	12	8	6
3. Stallion, 2 years old	10	7	5
4. Mare or Gelding, 4 years old and upwards	12	8	6
5. Filly, 3 years old	10	7	5
6. Filly, 2 years old	8	6	4
7. Yearling, Filly or Gelding	7	5	3
8. Brood Mare, with Foal of same breed by her side	20	12	8
9. Foal of 1897	7	5	3
10. Best Mare, any age	Medal.		

Class 14.—Hackney Horses.*(Pedigree to be produced.)*

SEC.

	1st.	2nd.	3rd.
1. Stallion, 4 years old and upwards	\$20	\$12	\$8
2. Stallion, 3 years old	18	10	7
3. Stallion, 2 years old	12	8	6

Entries positively close 16th August

SEC.	1st.	2nd.	3rd.
4. Yearling Colt, entire.	10	7	5
5. Stallion, any age	Medal.		
6. Gelding, 8 years old.	12	8	6
7. Filly, 3 years old	12	8	6
8. Gelding, 2 years old.	10	7	5
9. Filly, 2 years old	10	7	5
10. Yearling, Filly or Gelding	8	6	4
11. Brood Mare with Foal of same breed by her side	20	12	8
12. Foal of 1897	8	6	4
13. Best Mare, any age	Medal.		

Special Prize of TWO SILVER MEDALS offered by the **Hackney Horse Society** of London, England.

SEC.

14. B. (1.) For the best Hackney Mare or Filly, by an imported sire and out of an imported dam, both registered in the English Hackney Stud Book.
15. D. (1.) For the best Hackney Stallion or Entire Colt, by an imported sire and out of an imported dam, both registered in the English Hackney Stud Book.

Class 15.—Dog Cart Horses and Cobs.

SEC.	1st.	2nd.	3rd.
1. Dog Cart Horse (Mare or Gelding), style and action, 4 years and over, not under 15½ hands, to be shown in harness	\$18	\$10	\$7
2. Cob in harness (Mare or Gelding), 4 years and over, not under 14 hands, and not exceeding 15 hands, must be stoutly built and have style and good action	18	10	7
3. Pair of Cobs, 4 years and over, not under 14 hands, and not exceeding 15 hands, must be stoutly built and have style and good action	18	10	7

Class 16.—Ponies.

SEC.	1st.	2nd.
1. Shetland Stallion, 3 years old and upward.	\$5	\$3
2. Shetland Mare, in foal, or with foal at foot	5	3
3. Welch Stallion, 3 years old and over	5	3
4. Welch Mare, in foal, or with foal at foot	5	3
5. Exmoor Stallion, 3 years old and over	5	3
6. Exmoor Mare, in foal, or with foal at foot	5	3
7. Stallion, Mare or Gelding 12 hands or under, in harness	5	3
8. Pair, Mare or Gelding 12 hands or under, in harness	5	3
9. Stallion, Mare or Gelding 12 to 14 hands, harness	5	3
10. Pair, Stallion, Mare or Gelding 12 to 14 hands, in harness	5	3
11. Best boy rider under 15 years of age, on Pony not over 14 hands	6	4

Entries positively close 16th August

Class 17.—Tandems.

Sec.	1st.	2nd.	3rd.
1. For the best tandem and turnout, the property of the exhibitor, style and skill in handling, etc.	\$20	\$12	\$8

Class 18.—High Jumping Contest.

RULES.—The fences for the jumping classes will be such as the Horse Committee shall select, but for the high jumping contest the following rules will be enforced :

The fence to be raised 4 inches at a time until 5 feet is reached, then it will be raised 8 inches at a time until 6 feet 8 inches is reached, which will be the maximum height required to be jumped.

Each horse will be allowed three trials.

Knocking the top bar off, or falling, will count against a horse the same as an absolute refusal. The top bar will be held in place in such manner as the Horse Committee may deem advisable.

The Judges, in making their awards, will especially consider the form in which the horses take their leaps.

1st.—\$25.00.

2nd.—\$15.00.

3rd.—\$10.00.

SPECIAL PRIZE—SILVER CUP

PRESENTED BY THE

CANADIAN PRODUCE COMPANY OF MONTREAL,

FOR THE BEST JUMPER.

CONDITIONS—High jump limited to 6 feet, minimum weight 145 lbs. Trial to begin at 4 feet. In case of a tie, Judges will consider the form in which the horses have taken their jumps.

Class 19.—Fast Walking Horse.

SPECIAL PRIZE, presented by ROBERT WISEMAN, Esq., MILE END HOTEL, for FAST WALKING HORSE—attached to Cart or dray. \$10.00 \$5.00



Entries positively close 16th August

1831

The

1897

Cultivator and Country Gentleman

THE BEST OF THE
AGRICULTURAL WEEKLIES

... DEVOTED TO ...

Farm Crops and Processes, Horticulture and Fruit-Growing,
Live-Stock and Dairying.

WHILE it also includes all minor departments of Rural interest, such as the Poultry Yard, Entomology, Bee-Keeping, Greenhouse and Grapery, Veterinary Replies, Farm Questions and Answers, Fireside Reading, Domestic Economy, and a summary of the News of the Week. Its MARKET REPORTS are unusually complete, and much attention is paid to the Prospects of the Crops, as throwing light upon one of the most important of all questions—*When to Buy and When to Sell*. It is liberally Illustrated, and contains more reading matter than ever before.

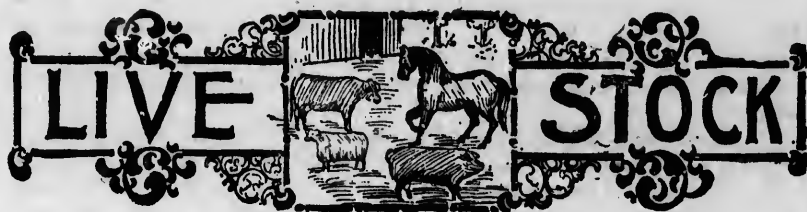
The subscription Price is \$2.50 per year,
but we offer a SPECIAL REDUCTION in our

CLUC RATES:

Two Subscriptions,	in one remittance	\$4
Six Subscriptions,	do do	10
Ten Subscriptions,	do do	15

Specimen Copies Free. Address

Luther Tucker & Son,
PUBLISHERS,
ALBANY, - - - - N.Y.



CATTLE

CATTLE COMMITTEE.—T. A. Trenholme, Esq., Chairman ; Messrs. Arsène Denis, St. Norbert ; James Johnston, Jérémie Décarie, Notre Dame de Grâces ; Daniel Drummond, Petite Côte ; Mica. John McIntosh, Sherbrooke ; Thos. Drysdale, Allan's Corners ; Nap. Lachapelle, St. Paul l'Hermite.

*Entrance Fee, 50c. per Head a.r. \$1.00 for each Herd Competition.
Stalls Free.*

Entries Close MONDAY, 16th. AUGUST.

All cattle must be on the Grounds by 10 a.m. Monday, 22nd August.

In making entries, the owner's name and address in full and the age of the animal, with registration number, must be given, and certificates produced if required.

Entry Fee must be paid for each and every section in which an animal is entered for competition, except for Sweepstakes.

No entries will be accepted after the opening of the Exhibition.

Each stall will be amply supplied with straw at the opening of the Exhibition. If more is required it must be provided by the Exhibitor.

Judging will commence on Monday, 23rd August.

The ages of all cattle will be calculated for the present year, from the 1st August. Exhibitors will please take notice that in future exhibitions, ages will be calculated from the 1st January.

Cows must be either milking or in calf at time of Exhibition.

All cows exhibited in the Dairy Classes must be milked dry not earlier than seven o'clock in the evening previous to the day of judging. The Superintendent will see that this is done.

In all Thoroughbred Classes, animals must be registered, and exhibitors, if required, must produce pedigrees at time of exhibition.

Entries positively close 16th August

No animal can compete in more than one class or section, except for the prize for best Male or Female or for Herd Prizes. All animals will be shown when required, and exhibitors must be ready to bring them out when called for by the Superintendent.

In any section where there is only one exhibitor, not more than one prize will be awarded.

Exhibitors competing in the Breeders' Young Herd must furnish on the Grounds, if required, certificates that the animals shown are bred and owned by them.

In the absence of competition in any section, or if the exhibits be of inferior quality, the Judges will award only such premiums as they think advisable, and they may exercise their discretion as to whether they will award any premium.

The Directors, in the case of any Breed that has an extra large number of competitors, may, if they see fit, increase the number of prizes. Special prizes may also be awarded for special breeds not enumerated in the list but placed on exhibition.

All Live Stock will be permitted to leave the Grounds after 4 p.m. on Friday, 27th August.

A GRAND PARADE OF LIVE STOCK

WILL TAKE PLACE DAILY AT 2 P.M.

Class 20.—Durhams or Short Horns.

(Pedigree to be produced.)

SEC.	1st.	2nd.	3rd.
1. Bull, 8 years old and upwards	\$25	\$15	\$10
2. Bull, 2 years old and under 8	20	12	8
3. Bull, 1 year old	12	8	6
4. Bull Calf, under 1 year	8	6	4
5. Cow, 8 years old or over	18	10	6
6. Heifer, 2 years old and under 8	12	8	5
7. Heifer, 1 year old and under 2	8	5	4
8. Heifer Calf, under 1 year	7	5	3

Class 21.—Exhibitor's Herd.

	1st.	2nd.	3rd.
Herd to consist of one bull and four females	\$25	\$15	\$12

Class 22.—Breeder's Young Herd.

The whole, except the Bull, to be bred and owned by exhibitor.

SEC.	1st.	2nd.	3rd.
1. Herd to consist of one bull under 2 years, two heifers 1 year and under 2, and two heifer calves under 1 year	\$20	\$15	\$10

Entries positively close 16th August

SPECIAL PRIZE

PRESENTED BY

THE DOMINION SHORT HORN BREEDER'S ASSOCIATION

Young herd, consisting of one bull and four heifers, under two years of age, owned by exhibitor and to be recorded in the Dominion Short

Horn Herd Book, Toronto, Ont. \$15 \$10

Class 23.—Sweepstakes.

(*Entry free.*)

Sec. Not less than two entries required in this class.

- | | | |
|-------------------------------|--|--------|
| 1. Bull, of any age | | Medal. |
| 2. Cow, of any age | | Medal. |

Class 24.—Herefords.

(*Pedigree to be produced.*)

Sec.	1st.	2nd.	3rd.
1. Bull, 3 years old and upwards	\$25	\$15	\$10
2. Bull, 2 years old	18	10	6
3. Bull, 1 year old	10	7	5
4. Bull Calf, under 1 year	7	5	3
5. Cow, 3 years old or over	18	10	7
6. Heifer, 2 years old and under 3	10	7	5
7. Heifer, 1 year old and under 2	7	5	3
8. Heifer Calf, under 1 year	5	3	2

Class 25.—Exhibitor's Herd.

Herd to consist of one bull and four females \$25 \$15 \$12

Class 26.—Breeder's Young Herd.

The whole, except the Bull, to be bred and owned by exhibitor.

Herd to consist of one bull under 2 years, two heifers 1 year and under 2, and two heifer calves under 1 year \$18 \$15 \$10

Class 27.—Sweepstakes.

(*Entry free.*)

Not less than two entries required in this class.

- | | | |
|-------------------------------|--|--------|
| 1. Bull, of any age | | Medal. |
| 2. Cow, of any age | | Medal. |

Entries positively close 16th August

Class 28.—Polled Angus, or Aberdeens.

(Pedigree to be produced.)

SEC.	1st.	2nd.	3rd.
1. Bull, 3 years old and upwards.	\$25	\$15	\$10
2. Bull, 2 years old	20	12	8
3. Bull, 1 year old	12	8	6
4. Bull Calf, under 1 year	8	6	4
5. Cow, 4 years old and over	20	12	8
6. Cow, 3 years old, under 4	18	10	6
7. Heifer, 2 years old and under 3	12	8	5
8. Heifer, 1 year old and under 2	8	6	4
9. Heifer Calf, under 1 year	7	5	3

Class 29.—Exhibitor's Herd.

Herd to consist of one bull and four females	\$25	\$18	\$12
--	------	------	------

Class 30.—Breeder's Young Herd.

The whole, except the bull, to be bred and owned by exhibitor.

Herd to consist of one bull under 2 years, two heifers 1 year and under 2, and two heifer calves under 1 year	\$20	\$15	\$10
---	------	------	------

Class 31.—Sweepstakes.

(Entry free.)

Not less than two entries required in this class.

1. Bull, of any age	Medal.
2. Cow, of any age	Medal.

Class 32.—Galloways.

(Pedigree to be produced.)

SEC.	1st.	2nd.	3rd.
1. Bull, 2 years old and upwards.	\$20	\$12	\$8
2. Bull, 1 year old	12	8	6
3. Bull Calf, under 1 year	8	6	4
4. Cow, 3 years old or over	18	10	7
5. Heifer, 2 years old and under 3	12	8	6
6. Heifer, 1 year old and under 2	8	6	4
7. Heifer Calf, under 1 year.	7	5	3

Class 33.—Exhibitor's Herd.

Herd to consist of one bull and four females	1st. \$20	2nd. \$15	3rd. \$12
--	-----------	-----------	-----------

Entries positively close 16th August

Class 34.—Breeder's Young Herd.

The whole, except the bull, to be bred and owned by exhibitor.

	1st.	2nd.	3rd.
Herd to consist of one bull under two years, two heifers 1 year and under 2, and two heifer calves under 1 year	\$18	\$12	\$10

Class 35.—Sweepstakes.

(Entry free)

SEC. Not less than two entries required in this class.

- | | |
|-------------------------------|--------|
| 1. Bull, of any age | Medal. |
| 2. Cow, of any age | Medal. |

Class 36.—Ayrshires.

(Pedigree to be produced.)

SEC.	1st.	2nd.	3rd.	4th.	5th.
1. Bull, 3 years old and upwards	\$25	\$20	\$15	\$10	\$7
2. Bull, 2 years old	20	15	10	7	5
3. Bull, 1 year old	12	8	6	4	2
4. Bull Calf, under 1 year	8	6	4	2	1
5. Bull Calf, under 6 months	4	3	2	1	
6. Cow, 4 years old and over	20	15	10	7	5
7. Cow, 3 years old and under 4	18	12	8	6	4
8. Heifer, 2 years old and under 3	12	8	6	4	2
9. Heifer, 1 year old and under 2	8	6	4	2	1
10. Heifer Calf, under 1 year and over 6 months.	6	5	3	2	1
11. Heifer Calf, 6 months and under	4	3	2	1	

12—Special Prize—Gold Medal.

Presented by the AYRSHIRE IMPORTERS' & BREEDERS' ASSOCIATION OF CANADA.

For the best four animals, the progeny of one Sire, bred and owned by exhibitor, the Sire not necessarily to be the property of exhibitor.

The animals competing for this prize must be registered in the C. A. H. R., prior to 16th August.

Class 37.—Exhibitor's Herd.

	1st.	2nd.	3rd.
Herd to consist of one bull and four females	\$*100	\$18	\$12

*First Prize of \$100.00 presented by W. W. OGILVIE, Esq., Montreal.

Entries positively close 16th August

Class 38.—Breeder's Young Herd.

The whole, except the bull, to be bred and owned by exhibitor.

	1st.	2nd.	3rd.
Herd to consist of one bull under 2 years, two heifers 1 year and under 2, and two heifer calves under 1 year	\$20	\$15	\$10

Class 39.—Sweepstakes.

(Entry free.)

Not less than two entries required in this class.

SEC.

1. Bull, of any age	Medal.
2. Cow, of any age	Medal.

Class 40.—Jerseys or Alderneys.

(Pedigree to be produced.)

SEC.

	1st.	2nd.	3rd.
1. Bull, 3 years old and upwards	\$25	\$15	\$10
2. Bull, 2 years old	15	10	7
3. Bull, 1 year old	10	7	5
4. Bull Calf, under 1 year	7	5	3
5. Cow, 4 years old and over	20	12	8
6. Cow, 3 years old and under 4	12	8	6
7. Heifer, 2 years old and under 3	10	7	5
8. Heifer, 1 year old and under 2	7	5	3
9. Heifer Calf, under 1 year	4	3	1

Class 41.—Exhibitor's Herd.

Herd to consist of 1 bull and four females	\$25	\$18	\$12
--	------	------	------

Class 42.—Breeder's Young Herd.

The whole, except the Bull, to be bred and owned by exhibitor.

Herd to consist of 1 bull under 2 years, two heifers 1 year and under 2, and two heifer calves under 1 year	\$20	\$15	\$10
---	------	------	------

Class 43.—Sweepstakes.

(Entry free.)

Not less than two entries required in this class.

SEC.

1. Bull, of any age	Medal.
2. Cow, of any age	Medal.

Entries positively close 16th August

Class 44.—Guernseys.

(Pedigree to be produced.)

SEC.	1st.	2nd.	3rd.
1. Bull, 3 years old and upwards	\$25	\$15	\$10
2. Bull, 2 years old	20	12	8
3. Bull, 1 year old	12	8	6
4. Bull Calf, under 1 year	8	6	4
5. Cow, 3 years old or over	18	10	6
6. Heifer, 2 years old and under 3	12	8	5
7. Heifer, 1 year old and under 2	8	6	4
8. Heifer Calf, under 1 year	7	5	3

Class 45.—Exhibitor's Herd.

Herd to consist of one bull and four females \$25 \$15 \$12

Class 46.—Breeder's Young Herd.

The whole except the bull, to be bred and owned by exhibitor.

Herd to consist of one bull under 2 years, two heifers 1 year and under 2, and two heifer calves under 1 year \$20 \$15 \$10

Class 47.—Sweepstakes.

(ENTRY FREE.)

Not less than two entries required in this class.

SEC.	
1. Bull, of any age	Medal.
2. Cow, of any age	Medal.

Class 48.—Holsteins.

(Pedigree to be produced.)

SEC.	1st.	2nd.	3rd.
1. Bull, 3 years old and upwards	\$25	\$15	\$10
2. Bull, 2 years old	15	10	7
3. Bull, 1 year old	12	7	5
4. Bull Calf, under 1 year	7	5	3
5. Cow, 4 years old and over	20	12	8
6. Cow, 3 years old and under 4	12	8	6
7. Heifer, 2 years old and under 3	10	7	5
8. Heifer, 1 year old and under 2	7	5	3
9. Heifer Calf, under 1 year	6	4	2

Class 49.—Exhibitor's Herd.

Herd to consist of one bull and four females \$25 \$18 \$12

Entries positively close 16th August

Class 50.—Breeder's Young Herd.

The whole, except the bull, to be bred and owned by the exhibitor.

Herd to consist of one bull under 2 years, two heifers 1 year and under 2, and two heifer calves under one year \$20 \$15 \$10

Class 51.—Sweepstakes.

(Entry free.)

Not less than two entries required in this class.

SEC.

- | | |
|-------------------------------|--------|
| 1. Bull, of any age | Medal. |
| 2. Cow, of any age | Medal. |

Class 52.—Canadian Cattle.

To compete in this class, animals must be registered in the "Herd Book," opened by the Provincial Government and kept by Prof. Couture, of Quebec, to whom all demands for registration should be addressed.

SEC.	1st.	2nd.	3rd.	4th.
1. Bull, 3 years old and upwards	\$20	\$15	\$8	\$7
2. Bull, 2 years old	15	10	7	5
3. Bull, 1 year old.	12	8	6	4
4. Bull Calf, 6 months and under 1 year	8	6	4	2
5. Cow, 4 years old and over * GOLD MEDAL	15	10	8	
6. Cow, 3 years old and under 4.	15	10	8	6
7. Heifer, 2 years old and under 3	12	8	6	5
8. Heifer, 1 year old and under 2	10	7	5	3
9. Heifer Calf, 6 months and under 1 year	8	6	4	2
10. Heifer Calf, under 6 months	4	3	2	1

* Presented by H. Laporte, Esq., Montreal.

Class 53.—Exhibitor's Herd.

Herd to consist of one bull and four females \$20 \$15 \$10 \$6

Class 54.—Breeder's Young Herd.

The whole, except bull, to be bred and owned by exhibitor.

Herd to consist of one bull under 2 years, two heifers 1 year and under 2, and two heifer calves under 1 year. \$18 \$15 \$7 \$5

Entries positively close 16th August

Class 55.—Sweepstakes.

(Entry free.)

Not less than two entries required in this class.

SEC.

- | | |
|-------------------------------|--------|
| 1. Bull, of any age | Medal. |
| 2. Cow, of any age | Medal. |

Class 56.—Grade Cattle, for Dairy Purposes.

SEC.

- | | 1st. | 2nd. | 3rd. | 4th. |
|--|------|------|--------|------|
| 1. Cow, 4 years old and upwards | \$20 | \$15 | \$10 | \$6 |
| 2. Cow, 8 years old | 15 | 10 | 7 | 5 |
| 3. Heifer, 2 years old | 8 | 6 | 4 | 2 |
| 4. Heifer, 1 year old | 6 | 4 | 3 | 2 |
| 5. Heifer Calf, under 1 year | 5 | 3 | 2 | 1 |
| 6. Four Females over 1 year, owned by exhibitor. | 15 | 10 | 7 | 5 |
| 7. Female of any age | | | Medal. | |

Class 57.—Fat Cattle, any Breed.

SEC.

- | | 1st. | 2nd. | 3rd. |
|--|------|------|------|
| 1. Steer, 3 years old | \$15 | \$10 | \$6 |
| 2. Steer, 2 years old | 12 | 8 | 6 |
| 3. Steer, 1 year old | 10 | 6 | 4 |
| 4. Best three Steers for shipping purposes, not to compete for any other prize | 20 | 15 | 10 |
| 5. Best Fatted Cow or Heifer | 12 | 8 | 6 |



Entries positively close 16th August



SHEEP

COMMITTEE.—D. Parizeau, M.P.P., (Chairman); Messrs. B. Beauchamp, M.P.P., St. Hermas; Thos. Irving, Petite Cote; Frs. Robert, St. Hubert; D. Brims, Athelstan; A. Charlier, St. Paul l'Hermite.

Entries positively close, MONDAY, 16th AUGUST.

Entrance Fee, 25c. per Head. Pens Sections \$1.00.

All sheep must be on the Grounds by 10 a.m. Monday, 23rd August.

In making entries, owner's name and address in full, must be given.

Entry Fee must be paid for each section in which an animal is entered for competition.

Entries Fees must be paid on all Sheep occupying pens.

Each pen will be amply supplied with straw at the opening of the exhibition.

Ewes, two shears and over, must have raised lambs the present season.

All pure-bred sheep must be registered, and certificate of same presented to the Judges.

If required, exhibitors must take a statutory declaration that the animals are of the ages stated by them. Judges will exclude from competition animals which are wrongly entered as to ages etc., etc.

The proper numbers must be placed on the sheep when they arrive on the grounds.

Judging will commence on Monday, 23rd August.

In the absence of competition in any section, or if the exhibits be of inferior quality, the Judges will award only such premiums as they think advisable, and they may exercise their discretion as to whether they will award *any* premium.

Exhibitors will be required to have their sheep in the judging ring for 5 minutes after the Judges' Awards have been made.

All Live Stock will be permitted to leave the Grounds after 4 p.m., Friday, 29th August.

Class 58.—Cotswolds.

SEC.	1st.	2nd.	3rd.
1. Ram, 2 shears and over.	\$10	\$8	\$4
2. Shearling ram	10	8	4
3. Ram lamb	8	6	3
4. Two ewes, 2 shears and over	10	8	4
5. Two shearling ewes	10	8	4
6. Two ewe lambs	8	6	3
7. Pen of Cotswolds, 1 ram, 2 ewes and 2 ewe lambs	10	7	4
8. Pen of Cotswolds, 1 ram and 2 ewes (bred and owned in the Province of Quebec)	10	7	4

Entries positively close 16th August

Class 58.—Leicesters.

SEC.	1st.	2nd.	3rd.
1. Ram, 2 shears and over.	\$10	\$8	\$4
2. Shearling Ram	10	8	4
3. Ram lamb	8	5	3
4. Two ewes, 2 shears and over	10	8	4
5. Two shearling ewes	10	8	4
6. Two ewe lambs	8	5	3
7. Pen of Leicesters, 1 ram, 2 ewes and 2 ewe lambs	10	7	4
8. Pen of Leicesters, 1 ram and 2 ewes (bred and owned in the Province of Quebec)	10	7	4

Class 59.—Lincolns.

SEC.	1st.	2nd.	3rd.
1. Ram, 2 shears and over.	\$10	\$8	\$4
2. Shearling ram.	10	8	4
3. Ram lamb	8	5	3
4. Two ewes, 2 shears and over	10	8	4
5. Two shearling ewes	10	8	4
6. Two ewe lambs	8	5	3
7. Pen of Lincolns, 1 ram, 2 ewes and 2 ewe lambs	10	7	4
8. Pen of Lincolns, 1 ram and 2 ewes (bred and owned in the Province of Quebec)	10	7	4

Class 60.—Shropshires.

SEC.	1st.	2nd.	3rd.
1. Ram, 2 shears and over.	\$10	\$8	\$4
2. Shearling ram.	10	8	4
3. Ram lamb	8	5	3
4. Two ewes, 2 shears and over	10	8	4
5. Two shearling ewes	10	8	4
6. Two ewe lambs	8	5	3
7. Pen of Shropshires, 1 ram, 2 ewes and 2 ewe lambs	10	7	4
8. Pen of Shropshires, 1 ram and 2 ewes (bred and owned in the Province of Quebec)	10	7	4

Class 61.—Oxfords.

SEC.	1st.	2nd.	3rd.
1. Ram, 2 shears and over	\$8	\$6	\$4
2. Shearling Ram	8	6	4
3. Ram lamb	7	5	3
4. Two ewes, 2 shears and over	8	6	4
5. Two shearling ewes	8	6	4
6. Two ewe lambs	7	5	3
7. Pen of Oxfords, 1 ram, 2 ewes and 2 ewe lambs	8	6	4

Entries positively close 16th August

SPECIAL PRIZES FOR OXFORD DOWN SHEEP.

8. Best yearling ram	\$10	5
9. Best yearling ewe	10	5
10. Best Pen of four lambs of either sex	12	8

These prizes are given by the American Oxford Down Sheep Record Association. All sheep competing for these prizes to be bred and owned by exhibitors in the Province of Quebec, and to be registered in the American Oxford Down Record, with A.O.D.R.A. ear tag inserted in the ear and certificate of registry, under seal of Association presented at time of exhibition. Where there is but one exhibitor only one prize will be paid.

Class 62.—Hampshire Downs

SEC.	1st.	2nd.	3rd.
1. Ram, 2 shears and over	\$7	\$5	\$3
2. Shearling ram	7	5	3
3. Ram lamb	6	4	2
4. Two ewes, 2 shears and over	7	5	3
5. Two shearling ewes	7	5	3
6. Two ewe lambs	6	4	2
7. Pen of Hampshire Downs, 1 ram, 2 ewes and 2 ewe lambs.	8	6	4

Class 63.—Southdowns.

SEC.	1st.	2nd.	3rd.
1. Ram, 2 shears and over.	\$10	\$8	\$4
2. Shearling Ram	10	8	4
3. Ram lamb	8	6	3
4. Two ewes, 2 shears and over	10	8	4
5. Two shearling ewes	10	8	4
6. Two ewe lambs	8	6	3
7. Pen of Southdowns, 1 ram, 2 ewes and 2 ewe lambs	10	7	5
8. Pen of Southdowns, 1 ram and 2 ewes (bred and owned in the Province of Quebec)	10	7	4

Class 64.—Merinos.

SEC.	1st.	2nd.
1. Ram, 2 shears and over.	\$7	\$5
2. Shearling lamb	7	5
3. Ram lamb	6	4
4. Two ewes, 2 shears and over	7	5
5. Two shearling ewes	7	5
6. Two ewe lambs	6	4
7. Pen of Merinos, 1 ram, 2 ewes, and 2 ewe lambs	8	6

Entries positively close 16th August

5
5
8
ssociation.
Province of
O.D.R.A.
presented
aid.

nd. 3rd.
\$5 \$3
5 3
4 2
5 3
5 3
4 2
6 4

d. 3rd.
\$8 \$4
8 4
6 3
8 4
8 4
6 3
7 5
7 4

1.
6
5
4
5
5
4
3

Class 65.—Dorset Horn Sheep.

SEC.

	1st.	2nd.
1. Ram, 2 shears and over.	\$7	\$5
2. Shearling ram.	7	5
3. Ram lamb	6	4
4. Two ewes, 2 shears and over	7	5
5. Two shearling ewes	7	5
6. Two ewe lambs	6	4
7. Pen of Dorset sheep, 1 ram, 2 ewes and 2 ewe lambs	8	6

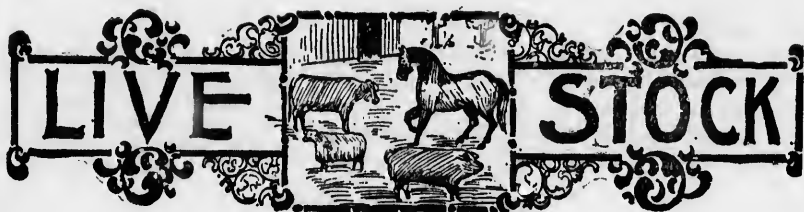
Class 66.—Fat Sheep.

SEC.

	1st.	2nd.	3rd.
1. One Fat Wether, 2 shears and over.	\$8	\$4	\$2
2. One Fat Ewe, 2 shears and over	8	4	2
3. One Fat Shearling, Ewe or Wether.	8	4	2
4. Best Five Fat Sheep for shipping purposes	Medal.		



Entries positively close 16th August



SWINE

COMMITTEE.—D. Parizeau, M.P.P., (Chairman); Messrs. E. C. Brosseau, Laprairie; T. D. McMillan, Danville, J. G. Mair, Howick, Peter Laing, F. Delage, Longueuil.

Entries positively close, MONDAY, 16th AUGUST.

Entrance fee, 25c. per Head per Section. Pen Section \$1.00.

Entry Fee must be paid for each and every section in which an animal is entered for competition.

The owner's name and address in full, must be given, when making entries.

No entries will be accepted after the opening of the Exhibition.

Any animal entered in any section different from its age, will not be allowed to compete.

Each pen will be amply supplied with straw at the opening of the Exhibition.

Judging will commence on Monday, 23rd August.

Exhibitors **must** make a statutory declaration that their animals are of the ages stated by them. Judges will exclude from competition animals which are wrongly entered as to ages, etc., etc.

All Berkshires, Suffolks, Poland Chinas, Chester Whites, Duroc Jerseys, Tamworths and improved Yorkshires must be registered in the Canadian Swine Herd Books, and Certificates produced when required.

In the absence of competition in any section, or if the exhibits be of inferior quality, the Judges will award only such premiums as they think advisable, and they may exercise their discretion as to whether they will award *any* premium.

All Live Stock will be permitted to leave the Grounds after 4 p.m., Friday, 27th August.

Entries positively close 16th August



seau, Laprai-
ge, Longueuil.

is entered for

tries.

be allowed to

ition.

ne ages stated
ly entered as

s, Tamworths
d Books, and

ferior quality,
may exercise

Friday, 27th

st

Class 67.—Berkshires.

SEC.	1st.	2nd.	3rd.
1. Boar, 2 years and over	\$12	\$8	\$5
2. Boar, 1 year and under 2	10	7	4
3. Boar, 6 months and under 12	8	5	3
4. Boar, under 6 months.	7	4	2
5. Sow, 2 years and over	12	8	5
6. Sow, 1 year and under 2	10	7	4
7. Sow, 6 months and under 12	8	5	3
8. Sow, under 6 months.	7	4	2
9. Best Berkshire boar and 2 sows, any age.	12	8	5
10. Best sow and 8 of her get (bred and owned by exhibitor in the Province of Quebec)	12	8	4

Class 68.—Improved Yorkshires.

SEC.	1st.	2nd.	3rd.
1. Boar, 2 years and over	\$12	\$8	\$5
2. Boar, 1 year and under 2	10	7	4
3. Boar, 6 months and under 12	8	5	3
4. Boar, under 6 months	7	4	2
5. Sow, 2 years and over	12	8	5
6. Sow, 1 year and under 2	10	7	4
7. Sow, 6 months and under 12	8	5	3
8. Sow, under 6 months.	7	4	2
9. Best improved Yorkshire boar and 2 sows, of any age	14	8	
10. Best sow and 8 of her get (bred and owned by exhibitor in the Province of Quebec)	10	7	4
11. SPECIAL PRIZE presented by JOSEPH FEATHERSTON, M. P., Streetsville, Ont., for the best IMPROVED YORKSHIRE BOAR, any age, imported from England since EXHIBITION of 1896, and providing he takes First Prize in his section			\$20.00

Class 69.—Suffolks.

SEC.	1st.	2nd.	3rd.
1. Boar, 2 years and over	\$8	\$6	\$8
2. Boar, 1 year and under 2	8	6	3
3. Boar, 6 months and under 12	7	5	2
4. Boar, under 12 months	5	3	1
5. Sow, 2 years and over	8	6	3
6. Sow, 1 year and under 2	7	5	2
7. Sow, 6 months and under 12.	7	5	2
8. Sow, under 6 months.	5	3	1
9. Best Suffolk boar and 2 sows, any age.	10	7	
10. Best sow and 8 of her get (bred and owned by exhibitor in the Province of Quebec)	12	8	4

Entries positively close 16th August

Class 70.—Tamworths

SEC.

	1st.	2nd.	3rd.
1. Boar, 1 year old and over	\$10	\$7	\$5
2. Boar, 6 months and under 1 year.	8	6	3
3. Boar, under 6 months.	6	4	2
4. Sow, 1 year old and over	10	7	4
5. Sow, 6 months and under 1 year	5	3	2
6. Sow, under 6 months.	5	3	2
7. Best Tamworth boar and 2 sows, any age	10	5	2

Class 71.—Poland Chinas.

SEC.

	1st.	2nd.	3rd.
1. Boar, 2 years and over	\$8	\$6	\$3
2. Boar, 1 year and under 2	7	5	3
3. Boar, 6 months and under 12	6	4	2
4. Boar, under 6 months.	4	3	1
5. Sow, 2 years and over	8	6	3
6. Sow, 1 year and under 2	7	5	2
7. Sow, 6 months and under 12	6	4	2
8. Sow, under 6 months.	4	3	1
9. Best Poland China boar and 2 sows, of any age.	10	5	

Class 72.—Chester Whites.

SEC.

	1st.	2nd.	3rd.
1. Boar, 2 years and over	\$12	\$8	\$5
2. Boar, 1 year and under 2	10	7	4
3. Boar, 6 months and under 12	8	5	3
4. Boar, under 6 months	7	4	2
5. Sow, 2 years and over	12	8	5
6. Sow, over 1 year and under 2	10	7	4
7. Sow, 6 months and under 12	8	5	3
8. Sow, under 6 months.	7	4	2
9. Best Chester White boar and 2 sows, of any age.	12	8	
10. Best sow and 3 of her get (bred and owned by exhibitor in the Province of Quebec)	10	7	4

Entries positively close 16th August

2nd.	3rd.
\$7	\$5
6	3
4	2
7	4
3	2
3	2
5	2

2nd.	3rd.
\$6	\$3
5	3
4	2
3	1
6	3
5	2
4	2
3	1
5	

2nd.	3rd.
\$8	\$5
7	4
5	3
4	2
8	5
7	4
5	3
4	2
8	
7	4

Class 73.—Large Yorkshires, Victorias, and other Large Breeds.

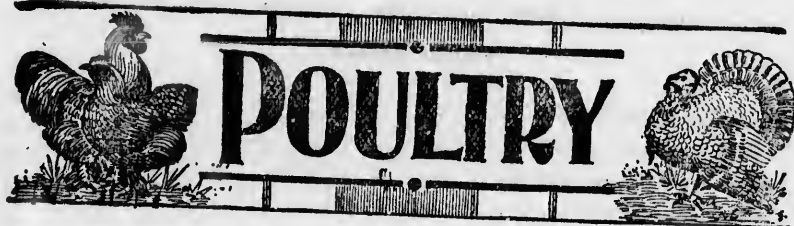
SEC.	1st.	2nd.	3rd.
1. Boar, 2 years and over	\$8	\$6	\$3
2. Boar, 1 year and under 2	8	6	3
3. Boar, 6 months and under 12	7	5	2
4. Boar, under 6 months.	5	3	1
5. Sow, 2 years and over	8	6	3
6. Sow, 1 year and under 2	7	5	2
7. Sow, 6 months and under 12	7	5	2
8. Sow, under 6 months.	5	3	1
9. Best boar and 2 sows, of any age.	10	7	4
10. Best sow and 3 of her get (bred and owned by exhibitor in the Province of Quebec)	10	7	4

Class 74.—Duroc Jerseys.

SEC.	1st.	2nd.	3rd.
1. Boar, 2 years and over	\$8	\$6	\$3
2. Boar, 1 year and under 2	7	5	2
3. Boar, under 12 months	6	4	2
4. Sow, 2 years and over	8	6	3
5. Sow, 1 year and under 2	7	5	2
6. Sow, 6 months and under 12	6	4	2
7. Sow, under 6 months.	4	3	1
8. Best boar and 2 sows, any age	8	6	



Entries positively close 16th August



COMMITTEE.—H. Prevost, Esq., (Chairman); Messrs. Maj.-Gen'l Cameron, J. J. Gareau, T. C. Huot, Thomas Hall, F. W. Moleon, W. H. Ulley, E. L. Gneadinger, A. J. Morton, Victor Fortier, D. Seutens.

Entries positively close 16th August.

(Entrance Fee, 25c. each section. Pigeons, 15c. each section.)

In making entries, exhibitors must be careful to state the number of the class in which they are to be entered, as fowls or chickens.

Entry Fee must be paid for each section in which each bird is entered for competition.

Exhibitors in this Department whose entry fees amount to three dollars and over will be granted free admission to the grounds during the second week.

All specimens, except Games and Game Bantams, must be exhibited in their natural condition.

A card will be placed upon each coop, cage or specimen, giving the number and variety of the exhibit, but no other card will be allowed until the Judges have completed their awards.

Coops, except in the Ornamental Class, will be provided, and the Poultry fed at the expense of the Montreal Exposition Company.

The Poultry Show will commence on Monday, 23rd August, and all poultry to be exhibited must be in place, on the Grounds, before 10 a.m. on that day.

No birds will be allowed in the building except those entered for exhibition.

In sections for *any other variety*, not mentioned in the Prize List, the birds must be pure bred.

Class 75.—FOWLS.

	1st.	2nd.	3rd.
1. Brahmas, dark cock	\$2	\$1	50c.
2. Brahmas, dark hen.	2	1	50
3. Brahmas, light cock	2	1	50
4. Brahmas, light hen.	2	1	50
5. Cochins, buff cock	2	1	50
6. Cochins, buff hen	2	1	50
7. Cochins, partridge cock.	2	1	50

Entries positively close 16th August



meron, J. J.
Gneadinger,

ass in which

competition.
and over will

their natural

number and
completed

fed at the

oultry to be

n.
ds must be

d. 3rd.
l 50c.
l 50
l 50
l 50
l 50
l 50
l 50

	1st.	2nd.	3rd.
8. Cochins, partridge hen	\$2	\$1	50c.
9. Cochins, white cock	2	1	50
10. Cochins, white hen	2	1	50
11. Cochins, black cock	2	1	50
12. Cochins, black hen	2	1	50
13. Langshans, cock.	2	1	50
14. Langshans, hen	2	1	50
15. Dorkings, colored cock	2	1	50
16. Dorkings, colored hen	2	1	50
17. Dorkings, silver grey cock.	2	1	50
18. Dorkings, silver grey hen	2	1	50
19. Dorkings, white cock.	2	1	50
20. Dorkings, white hen	2	1	50
21. Houdans, cock	2	1	50
22. Houdans, hen.	2	1	50
23. Lefleche, cock	2	1	50
24. Lefleche, hen	2	1	50
25. Creve coeurs, cock	2	1	50
26. Creve coeurs, hen	2	1	50
27. Wyandottes, black cock.	2	1	50
28. Wyandottes, black hen	2	1	50
29. Wyandottes, white cock	2	1	50
30. Wyandottes, white hen	2	1	50
31. Wyandottes, buff cock	2	1	50
32. Wyandottes, buff hen	2	1	50
33. Wyandottes, golden laced cock.	2	1	50
34. Wyandottes, golden laced hen	2	1	50
35. Wyandottes, silver laced cock	2	1	50
36. Wyandottes, silver laced hen	2	1	50
37. Plymouth Rocks, cock	2	1	50
38. Plymouth Rocks, hen.	2	1	50
39. Plymouth Rocks, white cock.	2	1	50
40. Plymouth Rocks, white hen	2	1	50
41. Plymouth Rocks, buff cock	2	1	50
42. Plymouth Rocks, buff hen.	2	1	50
43. Dominique, cock.	2	1	50
44. Dominique, hen	2	1	50
45. Game, white cock	2	1	50
46. Game, white hen	2	1	50
47. Game, brown red cock	2	1	50
48. Game, brown red hen	2	1	50
49. Game, black sumatra cock.	2	1	50
50. Game, black sumatra hen	2	1	50
51. Game, duckwing cock	2	1	50

Entries positively close 16th August

	1st.	2nd.	3rd.
52. Game, duckwing hen.	\$2	\$1	50c.
53. Game, pile cock.	2	1	50
54. Game, pile hen	2	1	50
55. Game, Indian cock	2	1	50
56. Game, Indian hen	2	1	50
57. Game, black red cock	2	1	50
58. Game, black red hen	2	1	50
59. Game, any other variety cock	2	1	50
60. Game, any other variety hen.	2	1	50
61. Hamburgs, black cock	2	1	50
62. Hamburgs, black hen.	2	1	50
63. Hamburgs, golden pencilled cock	2	1	50
64. Hamburgs, golden pencilled hen	2	1	50
65. Hamburgs, silver pencilled cock	2	1	50
66. Hamburgs, silver pencilled hen	2	1	50
67. Hamburgs, golden spangled cock	2	1	50
68. Hamburgs, golden spangled hen	2	1	50
69. Hamburgs, silver spangled cock	2	1	50
70. Hamburgs, silver spangled hen.	2	1	50
71. Red Caps, cock	2	1	50
72. Red Caps, hen	2	1	50
73. Javas, black cock	2	1	50
74. Javas, black hen.	2	1	50
75. Javas, any other variety, cock	2	1	50
76. Javas, any other variety, hen.	2	1	50
77. Leghorns, white cock.	2	1	50
78. Leghorns, white hen	2	1	50
79. Leghorns, brown cock	2	1	50
80. Leghorns, brown hen.	2	1	50
81. Leghorns, rose comb brown cock	2	1	50
82. Leghorns, rose comb brown hen.	2	1	50
83. Leghorns, rose comb white cock	2	1	50
84. Leghorns, rose comb white hen	2	1	50
85. Leghorns, black cock.	2	1	50
86. Leghorns, black hen	2	1	50
87. Leghorns, buff cock	2	1	50
88. Leghorns, buff hen	2	1	50
89. Spanish, cock	2	1	50
90. Spanish, hen	2	1	50
91. Andalusians, cock	2	1	50
92. Andalusians, hen	2	1	50
93. Minorcas, black cock	2	1	50
94. Minorcas, black hen	2	1	50
95. Minorcas, white cock	2	1	50

Entries positively close 16th August

[illegible]

	1st.	2nd.	3rd.
96. Minorcas, white hen	\$2	\$1	50c.
97. Polands, white crested, black cock	2	1	50
98. Polands, white crested, black hen.	2	1	50
99. Polands, white cock	2	1	50
100. Polands, white hen	2	1	50
101. Polands, silver cock.	2	1	50
102. Polands, silver hen	2	1	50
103. Polands, golden cock	2	1	50
104. Polands, golden hen.	2	1	50
105. Polands, buff laced cock	2	1	50
106. Polands, buff laced hen	2	1	50
107. Polands, any color, unbearded except white cock.	2	1	50
108. Polands, any color, unbearded except white hen	2	1	50
109. Any other variety fowl, cock	2	1	50
110. Any other variety fowl, hen	2	1	50
111. Game Bantams, black red cock	2	1	50
112. Game Bantams, black red hen	2	1	50
113. Game Bantams, brown red cock.	2	1	50
114. Game Bantams, brown red hen	2	1	50
115. Game Bantams, duckwing cock	2	1	50
116. Game Bantams, duckwing hen	2	1	50
117. Game Bantams, pile cock	2	1	50
118. Game Bantams, pile hen	2	1	50
119. Bantams, Cochín, black cock	2	1	50
120. Bantams, Cochín, black hen	2	1	50
121. Bantams, rose comb black cock	2	1	50
122. Bantams, rose comb black hen.	2	1	50
123. Bantams, rose comb white cock	2	1	50
124. Bantams, rose comb white hen	2	1	50
125. Bantams, golden sebright cock	2	1	50
126. Bantams, golden sebright hen.	2	1	50
127. Bantams, silver sebright cock	2	1	50
128. Bantams, silver sebright hen	2	1	50
129. Bantams, Japanese cock	2	1	50
130. Bantams, Japanese hen	2	1	50
131. Bantams, Cochín cock	2	1	50
132. Bantams, Cochín hen	2	1	50
133. Bantams, Polish cock	2	1	50
134. Bantams, Polish hen.	2	1	50
135. Bantams, any other variety, cock	2	1	50
136. Bantams, any other variety, hen	2	1	50

Entries positively close 16th August

Class 76.—CHICKENS.

	1st.	2nd.	1 d.
1. Brahmas, dark cockerel	\$2	\$1	50c.
2. Brahmas, dark pullet	2	1	50
3. Brahmas, light cockerel	2	1	50
4. Brahmas, light pullet	2	1	50
5. Cochins, buff cockerel	2	1	50
6. Cochins, buff pullet	2	1	50
7. Cochins, partridge cockerel	2	1	50
8. Cochins, partridge pullet	2	1	50
9. Cochins, white cockerel	2	1	50
10. Cochins, white pullet	2	1	50
11. Cochins, black cockerel	2	1	50
12. Cochins, black pullet	2	1	50
13. Langshans, cockerel	2	1	50
14. Langshans, pullet	2	1	50
15. Dorkings, colored cockerel	2	1	50
16. Dorkings, colored pullet	2	1	50
17. Dorkings, silver grey cockerel	2	1	50
18. Dorkings, silver grey pullet	2	1	50
19. Dorkings, white cockerel	2	1	50
20. Dorkings, white pullet	2	1	50
21. Houdans, cockerel	2	1	50
22. Houdans, pullet	2	1	50
23. Lefleche, cockerel	2	1	50
24. Lefleche, pullet	2	1	50
25. Creve cœurs, cockerel	2	1	50
26. Creve cœurs, pullet	2	1	50
27. Wyandottes, black cockerel	2	1	50
28. Wyandottes, black pullet	2	1	50
29. Wyandottes, white cockerel	2	1	50
30. Wyandottes, white pullet	2	1	50
31. Wyandottes, buff cockerel	2	1	50
32. Wyandottes, buff pullet	2	1	50
33. Wyandottes, silver laced cockerel	2	1	50
34. Wyandottes, silver laced pullet	2	1	50
35. Wyandottes, golden laced cockerel	2	1	50
36. Wyandottes, golden laced pullet	2	1	50
37. Plymouth rocks, cockerel	2	1	50
38. Plymouth rocks, pullet	2	1	50
39. Plymouth rocks, white cockerel	2	1	50
40. Plymouth rocks, white pullet	2	1	50
41. Plymouth rocks, buff cockerel	2	1	50
42. Plymouth rocks, buff pullet	2	1	50
43. Dominique, cockerel	2	1	50

Entries positively close 16th August

	1st.	2nd.	3rd.
44. Dominique, pullet	\$2	\$1	50c.
45. Game, black red cockerel	2	1	50
46. Game, black red pullet	2	1	50
47. Game, brown red cockerel	2	1	50
48. Game, brown red pullet	2	1	50
49. Game, black sumatra cockerel	2	1	50
50. Game, black sumatra pullet	2	1	50
51. Game, duckwing cockerel	2	1	50
52. Game, duckwing pullet	2	1	50
53. Game, pile cockerel	2	1	50
54. Game, pile pullet	2	1	50
55. Game, Indian cockerel	2	1	50
56. Game, Indian pullet	2	1	50
57. Game, white Indian cockerel	2	1	50
58. Game, white Indian pullet	2	1	50
59. Game, any other variety, cockerel	2	1	50
60. Game, any other variety, pullet,	2	1	50
61. Hamburgs, black cockerel	2	1	50
62. Hamburgs, black pullet	2	1	50
63. Hamburgs, golden pencilled cockerel	2	1	50
64. Hamburgs, golden pencilled pullet	2	1	50
65. Hamburgs, silver pencilled cockerel	2	1	50
66. Hamburgs, silver pencilled pullet,	2	1	50
67. Hamburgs, golden spangled cockerel	2	1	50
68. Hamburgs, golden spangled pullet	2	1	50
69. Hamburgs, silver spangled cockerel,	2	1	50
70. Hamburgs, silver spangled pullet	2	1	50
71. Red Caps, cockerel	2	1	50
72. Red Caps, pullet	2	1	50
73. Javas, black cockerel	2	1	50
74. Javas, black pullet	2	1	50
75. Javas, any other variety, cockerel,	2	1	50
76. Javas, any other variety, pullet	2	1	50
77. Leghorns, white cockerel	2	1	50
78. Leghorns, white pullet	2	1	50
79. Leghorns, brown cockerel,	2	1	50
80. Leghorns, brown pullet	2	1	50
81. Leghorns, rose comb brown cockerel	2	1	50
82. Leghorns, rose comb brown pullet	2	1	50
83. Leghorns, rose comb white cockerel	2	1	50
84. Leghorns, rose comb white pullet,	2	1	50
85. Leghorns, black cockerel	2	1	50
86. Leghorns, black pullet	2	1	50
87. Leghorns, buff cockerel,	2	1	50

Entries positively close 16th August

	1st.	2nd.	3rd.
88. Leghorns, buff pullet	\$2	\$1	50c.
89. Spanish, cockerel	2	1	50
90. Spanish, pullet	2	1	50
91. Andalusians, cockerel	2	1	50
92. Andalusians, pullet	2	1	50
93. Minorcas, black cockerel	2	1	50
94. Minorcas, black pullet	2	1	50
95. Minorcas, white cockerel	2	1	50
96. Minorcas, white pullet	2	1	50
97. Polands, white crested black cockerel	2	1	50
98. Polands, white crested black pullet	2	1	50
99. Polands, white cockerel	2	1	50
100. Polands, white pullet	2	1	50
101. Polands, silver cockerel	2	1	50
102. Polands, silver pullet	2	1	50
103. Polands, golden cockerel	2	1	50
104. Polands, golden pullet	2	1	50
105. Polands, buff laced cockerel	2	1	50
106. Polands, buff laced pullet	2	1	50
107. Polands, any color, unbearded except white cockerel	2	1	50
108. Polands, any color, unbearded except white pullet	2	1	50
109. Any other variety, chicken cockerel	2	1	50
110. Any other variety, chicken, pullet	2	1	50
111. Bantams Game, black red cockerel	2	1	50
112. Bantams Game, black red pullet	2	1	50
113. Bantams Game, brown cockerel	2	1	50
114. Bantams Game, brown pullet	2	1	50
115. Bantams Game, duckwing cockerel	2	1	50
116. Bantams Game, duckwing pullet	2	1	50
117. Bantams Game, pile cockerel	2	1	50
118. Bantams Game, pile pullet	2	1	50
119. Bantams Cochin, black cockerel	2	1	50
120. Bantams Cochin, black pullet	2	1	50
121. Bantams, rose comb black cockerel	2	1	50
122. Bantams, rose comb black pullet	2	1	50
123. Bantams, rose comb white cockerel	2	1	50
124. Bantams, rose comb white pullet	2	1	50
125. Bantams, golden sebright cockerel	2	1	50
126. Bantams, golden sebright pullet	2	1	50
127. Bantams, silver sebright cockerel	2	1	50
128. Bantams, silver sebright pullet	2	1	50
129. Bantams, Japanese cockerel	2	1	50
130. Bantams, Japanese pullet	2	1	50
131. Bantams, Cochin cockerel	2	1	50

Entries positively close 16th August

47

	1st.	2nd.	3rd.
5. Turkeys, any other variety male	\$2	\$1	50c.
6. Turkeys, any other variety female	2	1	50
7. Geese, Bremen or Embden male	2	1	50
8. Geese, Bremen or Embden female	2	1	50
9. Geese, Toulouse male	2	1	50
10. Geese, Toulouse female	2	1	50
11. Geese, white or brown China male	2	1	50
12. Geese, white or brown China female	2	1	50
13. Geese, any other variety male	2	1	50
14. Geese, any other variety female	2	1	50
15. Ducks, Rouen male	2	1	50
16. Ducks, Rouen female	2	1	50
17. Ducks, Aylesbury male	2	1	50
18. Ducks, Aylesbury female	2	1	50
19. Ducks, Pekin male	2	1	50
20. Ducks, Pekin female	2	1	50
21. Ducks, Cayuga male	2	1	50
22. Ducks, Cayuga female	2	1	50
23. Ducks, white crested male	2	1	50
24. Ducks, white crested female	2	1	50
25. Ducks, any other variety male	2	1	50
26. Ducks, any other variety female	2	1	50

Class 79.—ORNAMENTAL.

1. Pair Guinea fowls	\$2	\$1	50c.
2. Pair Pheasants, English	2	1	50
3. Pair Pheasants, Golden	2	1	50
4. Pair Pheasants, Silver	2	1	50
5. Pair Pheasants, Albino	2	1	50
6. Pair Pheasants, Ring neck	2	1	50
7. Pair Pheasants, Himalayan	2	1	50
8. Pair Pheasants, Lady Amherst	2	1	50
9. Pair Pheasants, Reeves	2	1	50
10. Pair Mandarin ducks	2	1	50
11. Pair Carolina or wood ducks	2	1	50
12. Pair Common, native quail	2	1	50
13. Pair California quail	2	1	50
14. Pair Partridge	2	1	50
15. Pair Prairie chickens	2	1	50
16. White Pea fowl	2	1	50
17. Common Pea fowl	2	1	50
18. White Swan	2	1	50
19. Black Swan	2	1	50

Entries positively close 16th August

50c.
50
50
50
50
50
50
50
50
50 -
50
50
50
50
50
50
50
50

49

	1st.	2nd.	3rd.
8. Pouters, White pied hen.	\$1	\$50	\$25
9. English carrier Black or dun cock	1	50	25
10. " " " " hen.	1	50	25
11. " " any other standard color cock	1	50	25
12. " " " " hen.	1	50	25
13. Dragoons Blue Black, blue or silver checkered cock	1	50	25
14. " " " " " hen	1	50	25
15. " Any other standard color cock	1	50	25
16. " " " " " hen.	1	50	25
17. Barbs Black, red or dun cock	1	50	25
18. " " " " hen	1	50	25
19. " Any other standard color cock	1	50	25
20. " " " " hen.	1	50	25
21. Tumblers shortfaced almond cock	1	50	25
22. " " " hen.	1	50	25
23. " " any other standard color cock	1	50	25
24. " " " " hen	1	50	25
25. " Any other variety Bold or beard cock	1	50	25
26. " " " " hen	1	50	25
27. " " standard color cock	1	50	25
28. " " " " hen.	1	50	25
29. Fantails Blue or black cock	1	50	25
30. " " hen	1	50	25
31. " White cock	1	50	25
32. " " hen	1	50	25
33. " Any other standard color cock	1	50	25
34. " " " " hen.	1	50	25
35. Jacobins Red or yellow cock.	1	50	25
36. " " hen	1	50	25
37. " White cock	1	50	25
38. " " hen	1	50	25
39. " Any other color cock	1	50	25
40. " " " " hen.	1	50	25
41. Antwerps Shortfaced Blue or silver dun cock	1	50	25
42. " " " " hen	1	50	25
43. " Any standard color cock.	1	50	25
44. " " " " hen	1	50	25
45. " Longfaced blue, blue or red checkered, or silver dun cock	1	50	25
46. " " " " " hen	1	50	25
47. " Any other standard color cock.	1	50	25
48. " " " " hen	1	50	25
49. Show Homer, blue, blue or red checkered, or silver dun cock	1	50	25
50. " " " " " hen	1	50	25
51. " Any other color, cock	1	50	25

Entries positively close 16th August

SEC.	CLASS 53.—DRESSED POULTRY.	1st.	2nd.	3rd.
1.	Best pair of Fowls, dressed.	\$3	\$2	\$1
2.	Chickens	3	2	1
3.	Geese	3	2	1
4.	Turkeys	3	2	1
5.	Ducks	3	2	1

Special Prize of Ten Dollars.—Presented by **J. J. Gareau, Esq.,** St. Roch l'Acchigan, P. Q. for the best collection of hens eggs, of different varieties, collection to consist of 12 eggs of each variety. The eggs shown *must* be from hens owned by the exhibitor.

1st.	2nd.	3rd.
\$5	\$3	\$2

51

Office: 512 LAGAUCHETIERE STREET



MONTREAL

Bell Telephone

6867

Lumber
Merchant

D. PARIZEAU

Bell Telephone

8303

Yard: LACHINE CANAL, BASIN No. 3

Opposite OTTAWA STREET

FRS. MARTINEAU...

Dealer in Paints, Hardware, Oils, Varnishes, Coal Oil,
Glass, Wall Paper, Plumbers' Supplies

Iron Pipe from 1-4 to 4 in.

Cast Iron Pipe " 2 to 6 in.

Drain Pipe " 4 to 24 in.

Lead Pipe " 1-2 to 2 in.

Crown and Richelieu Closets

Hoppers and Cisterns

Galvanized and Black Sheet Iron

Portland Cement, Plaster, Etc.

1379, 1381, 1383, 1385 ST. CATHERINE ST.

Bell Telephone 6042
Merch. " 79

... MONTREAL

READ "LE MONDE"

The Great Liberal-Conservative Paper of Montreal.

The best informed newspaper upon the
burning political issues of the day.

Advertise in "LE MONDE"

"LE MONDE" reaches all well-inspired classes, and by reason of the
superiority of its class of readers is a

FIRST-CLASS ADVERTISING MEDIUM



BUSINESS AND
PRINTING OFFICE

75 ST. JAMES STREET

Have you seen the . . .

Latest Models?

THE . . .
**REMINGTON
TYPE-WRITER**



THE . . .
**REMINGTON
TYPE-WRITER**

CALL AND SEE THEM AT

119 ST. FRANCOIS XAVIER,

45 ADELAIDE ST. EAST,

MONTREAL.

. . . OR . . .

TORONTO.

SPACKMAN & ARCHBALD



Nearly an Accident

This Farmer was driving along with his friend and almost threw him out as he stopped short at "LATIMER'S" Farm Department and Carriage Warehouse, 592 ST. PAUL ST., where he found all classes and kinds of Farm Implements, Farm Waggon, Carts, Carriages, so good and cheap he has not ceased since to tell every person of it, and having used some of "VICTOR" Fertilizer's on his farm and garden, he recommends all farmers and gardeners to use it. If you call in and bring this *adv.* you can have his card as he does not care to have his name given here on print.

Jas. Slessor.

Jas. Johnston.



Jas. Johnston & Co.

...Importers of

English & foreign Dry Goods

Dealers in Canadian and American Manufactures

...Wholesale...

26 St. Helen Street,
Corner Recollet

...Montreal

F. E. PHELAN,

2331 St. Catherine St.

MONTREAL.

*We will send you, Post Paid, anyone of the following
Books on receipt of 12 CENTS.*

—STAR SERIES—

- | | | | |
|-----------------------------------|--------------------------|--|-----------------------------------|
| The Haunted Chamber | by The Duchess | My Guardian | by Ada Cambridge |
| Mount Eden | by Florence Marryat | Modern Ulysses | by Jos. Hatton . . |
| Heart and Science | by Wilkie Collins | Taken Alive | by E. P. Roe |
| Ruffins | by Oneida | Hedri or Blind Justice | by Helen Mathers |
| Cur Bessie | by Rose E. Carey | Hester Hepworth | by Kate Sannatt Woods |
| Averil | " | The Earl's Secret | by Henshaw |
| Her Martyrdom | by Charlotte M. Brame | Little Brownie's | by Mrs. A. McVeigh Miller |
| Her Mother's Sin | " | The Wing of Azrael | by Mono Caird |
| Lasca, The Beautiful | By Ellen Corwin Pierce | The Fatal Phryne | by L. C. Phillips |
| Two Fortunes | " | An I. D. Ben, South Africa | by Louisa [Viscelus Sheldon.] |
| Those Westerton Girls | by Florence Warden | Comedy of a Country House | by Julian Sturgis |
| Heart of Gold | by T. I. Meade | For the Defence | by E. L. Fargeon |
| A Life for a Love | " | Famous or Infamous | by Bertha Thomas |
| The witness of the Sun | by Amelis Revis | The Rock or the Rye | by S. C. DeLéon |
| Jezabel's Friends | by Dora Russell | Crowded Out | by Seronns |
| Other Bond | " | One Traveller Returns by D. Murry & H. Herman | |
| That Other Woman | by Annie Thomas | The Doctor's Daughter by Vera | |
| Maisie Derrick | by Catherine S. Macquoid | A Naughty Girl's Diary | by Author of a Bad [Boy's Diary.] |
| Well Out of it | by H. Halberton | Three Months Among the Moose. A Winter's | |
| Mr. and Mrs. Herries | by May Crommelin | Tale of the Northern Wilds of Canada | by A Military Chaplain |
| Fell among Thieves | by David Christie Murray | | |
| Plum Hollow | by S. W. H. Laritt | | |
| Modern Dick Whittington | by James Fayn | | |



Island City Pure Prepared House Paint

38 different Shades

“ “ Ready Mixed Floor Paint

“ “ Pure White Lead

“ “ Fine Coach Varnishes

P. D. DODS & CO.

MANUFACTURERS

188-190 McGill Street,

MONTREAL

Motto—"THE BEST"

GURD'S

GINGER ALE,
SODA WATER,
APPLE NECTAR,
CREAM SODA, &c.

To be obtained from all first-class grocers, hotels and restaurants.

2 Gold, 3 Silver, 5 Bronze Medals and 16 Diplomas
awarded for Superior Excellence.

Charles Gurd & Co.

MONTREAL.

J. & G. ESPLIN,

Box Manufacturers

— and Lumber Merchants

Orders for Butter Boxes will be promptly attended to

Office : 126 Duke Street,

— **MONTREAL**



COMMITTEE.—R. Auzias-Turenne, (Chairman), Messrs. J. A. Vaillancourt, Milton McDonald, M.P.P., J. Beaubien, A. A. Ayer, H. S. Foster.

(Entrance Fee, 25c. each section.)

Exhibitors of cheese and creamery butter *must* state on the entry forms the name of the factory where the same was made

A written declaration may be required from each prize taker that the cheese shown was made in the factory named.

Any exhibitor misrepresenting as to dates or otherwise will forfeit any prize that may be awarded.

Any factory or manufacturer can compete in all sections, but they cannot compete in the same section under different names.

All cheese and butter competing must be salted with some improved dairy salt. In order to secure a uniform salting of the butter exhibited, it is recommended that three-quarters of an ounce of salt be used to each pound of butter.

The cheese will be judged by a scale of points as follows :—Flavor, 35 ; Quality, 25 ; Texture, 15 ; Color, 15 ; Finish 10 ; Total 100.

The butter will also be judged by a scale of points as follows :—Flavor, 40 ; Grain, 30 ; Color 10 ; Salting, 15 ; Finish, 5 ; Total 100. The judges will attach to each lot of butter exhibited the card of points awarded by them.

No brands or other distinguishing marks will be allowed on any of the tubs or crocks in which butter is exhibited, other than the entry ticket.

The butter will be kept in large glass refrigerators constructed especially for the purpose, well supplied with ice.

The cheese and butter exhibited at the Montreal Exhibition can always be sold on the spot at good prices.

Exhibitors who do not come with their exhibits can address them to the Superintendent of the Dairy Department, Exhibition Grounds, Montreal, from whom they will receive every care and attention. Instructions can be given to the Superintendent as to the disposal of exhibits at the close, and these will be carefully carried out.

All exhibits in this Department *must* be delivered and placed by 6 p.m. Wednesday, the 18th August.

Entries positively close 16th August

Class 84.—Cheese, Butter, Dairy Utensils.

SEC.	1st.	2nd.	3rd.	4th.	5th.
1. Cheese, best 2, factory (colored), not less than 40 lbs, each, made on any day between the 15th and 25th July, 1897	\$30	\$20	\$15	\$10	\$5
2. Cheese, best 2, factory (white), not less than 40 lbs., each, made on any day between 15th and 25th July, 1897	25	15	10	7	
8. Cheese, best half dozen cream	8	6	4		
4. Cheese, best Stilton, 3 of 1896 make and 3 of 1897 make	8	6	4		
5. Best collection of at least 3 different makes of cheese, made in Canada, other than preceding	10	8	5	2	
6. Cheese, Gruyere, made in Canada	8	6	4	2	
7. Butter, best 2 tubs or firkins, not less than 40 lbs each, made at any butter factory or creamery .	25	20	15	10	
8. Butter, best 2 firkins or tubs, not less than 40 lbs each, made at any farm dairy	20	15	10		
9. Butter, best basket or box, prints or rolls, the product of farm dairy.	12	10	7	4	
10. Butter, best basket or box, prints or rolls, the product of creamery	12	10	7	4	
11. Best assortment for shipping purposes, of tubs, firkins, boxes and small packages			Medal.		
12. Cheese boxes, 2 best, for shipping purposes . .			Diploma.		
13. Churn			Medal.		
14. Butter Worker.			Medal.		
15. Utensils, best assortment of, for the manufacture of Cheese			Medal.		
16. Utensils, best assortment of, for the manufacture of Butter			Medal.		
17. Best exhibit of utensils for separating cream from milk by any plan or system			Medal.		



Entries positively close 16th August

SPECIAL PRIZES FOR BUTTER.

Presented by WELLS, RICHARDSON & CO.

M'nfr's WELLS, RICHARDSON & CO'S., Improved Butter Color.

COMPETITION OPEN TO ALL CANADIAN BUTTERMAKERS.

ELEGANT GOLD AND SILVER MEDALS.



Class 85.

Best Tub of Creamery Butter, not less than 20 lbs.

First Prize,	- -	Gold Medal, size of cut
Second "	- -	Silver Medal "
Third "	- -	One large bottle of W. R. & Co's "Improved Butter Color."

Best Package of Dairy Butter, not less than 10 lbs.

First Prize,	- -	Gold Medal, size of cut
Second "	- -	Silver Medal "
Third "	- -	One large Bottle of W. R. & Co's "Improved Butter Color."

CONDITIONS.—All Creamery and Dairy made Butter entered for this competition must be colored with Wells, Richardson & Co's "Improved Butter Color."

Entries positively close 16th August

ADVERTISERS . . .



What "Printers Ink," the authority of the World on advertising says: (April 21, 1897.)

"LA PRESSE has undoubtedly the largest Circulation in Canada. It is the organ of the French Speaking Canadians who form Eighty per cent. of the Province of Quebec."



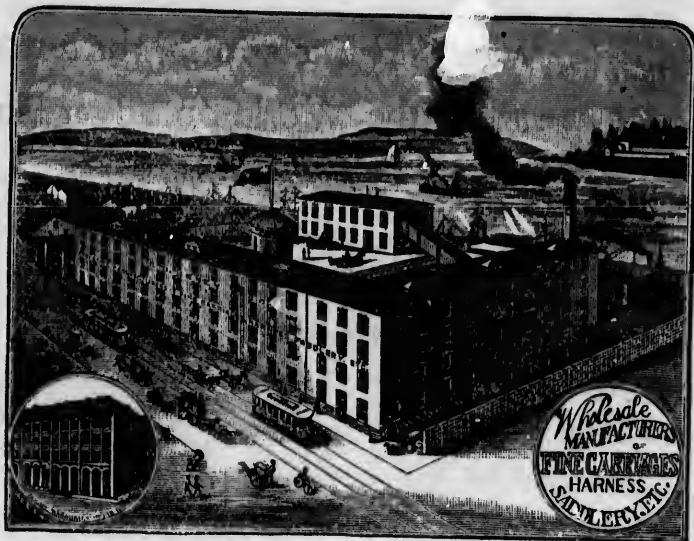
Without exception the largest daily circulation in Canada. Advertising brings returns in

LA PRESSE

Over 55,000 daily.

Carriages, Sleighs ^{AND} Harness

FOR HOME AND EXPORT TRADE.



Largest Manufacturers in Canada.

Illustrated Catalogues Supplied to
Dealers on Application

E. N. HENEY & CO.,

337 ST. PAUL STREET,

MONTREAL

NAP. RHEAUME & BRO.

... MANUFACTURERS OF ...

Mouldings, Picture Frames, Mirrors,
MANTELS AND OVER-MANTELS, CURTAIN POLES

Engravings, Chromos and Arthogravures
CARVING AND GILDING

No. 75 St. Lawrence Street

FACTORY: 46, 48, 50 ST. DOMINIQUE ST.

BELL TEL. 910.

...MONTREAL.

ESS



plied to
.....

REAL

RO.

s,

ures

EAL.

AGRICULTURAL PRODUCTS.

COMMITTEE.—W. Ewing, (Chairman), Messrs. A. Vincent, Longueuil, John McIntosh, Cote St. Michel, Jos. Delorme, Cote St. Michel, M. Moody, Terrebonne, Jos. Deslauriers, St. Laurent, A. McLaurin, Charlemagne, John Newman, Jr., Lachine, J. O. Ferras.

*Entrance Fee, 10 entries and under, 50c.; 10 to 15 entries, \$1.00;
over 15 entries \$2.00.*

All Grains, Seeds, and other agricultural products in Class 86 must be the growth of 1897.

The names of the different varieties of wheat and other grain and seeds must be inserted by each exhibitor in his list of entries.

The roots must be certified as of field culture and the production of the party exhibiting. Roots for exhibition must be topped and cleaned by exhibitors before being placed.

All exhibits are required to be in the building by 6 p.m. on Wednesday 18th August and must remain on exhibition till noon on Saturday 28th August, after which hour exhibitors will be allowed to remove their exhibits.

No cards other than those of the Exhibition Company will be allowed on any roots or vegetables entered for competition.

Class 86.—Field Grains, etc.

SEC.		1st.	2nd.	3rd.
1.	Wheat, Winter, 2 bushels, any variety.	\$5	\$3	\$2
2.	“ Spring, Fife, 2 bushels any variety.	5	3	2
3.	“ Spring, White Russian, 2 bushels	5	3	2
4.	“ Spring, Bearded, 2 bushels, any variety.	5	3	2
5.	Barley, 2 rowed, 2 bushels	5	3	2
6.	“ 4 or 6 rowed, 2 bushels	5	3	2
7.	Rye, Spring, 2 bushels	4	2	1
8.	Oats, White, 2 bushels, any variety	7 6 5	4 3	2
9.	“ American Banner, 2 bushels	5 4	3	2
10.	“ Black, 2 bushels	5	4	2
11.	Tares, 2 bushels	4	3	2
12.	Buckwheat, Black, 2 bushels	4	3	2
13.	Peas, Small Field, White, 2 bushels	4	3	2
14.	“ Small, Blue, 2 bushels	4	3	2
15.	“ Marrowfat, White, 2 bushels	4	3	2
16.	“ “ Black-eye, 2 bushels	4	3	2
17.	Beans, Small, White Field, 1 bushel	3	2	1
18.	“ Large, White Field, 1 bushel	4	2	1
19.	“ Horse, 1 bushel.	4	2	1
20.	Corn, Indian (in the ear), 1 trace white	3	2	1
21.	“ “ “ 1 trace yellow.	3	2	1

Entries positively close 16th August

Class 87.—Field Seeds.

SEC.	1st.	2nd.	3rd.
1. Timothy Seed, 2 bushels	\$5	\$4	\$2
2. Flax Seed, 2 bushels	3	2	1


Class 88.—Field Roots, etc.

Sec.			1st.	2nd.	3rd.
1.	Potatoes,	Early Freeman, 1 bushel basket	\$3	\$2	\$1
2.	"	Early Gem, " "	3	2	1
3.	"	Early Puritan, " "	3	2	1
4.	"	Beauty of Hebron, " "	5 4 3	2	1
5.	"	Early Rose, " "	5 4 3	2	1
6.	"	Maggie Murphy, " "	3	2	1
7.	"	Rural New Yorker, No 2 " "	3	2	1
8.	"	Lee's Favorite, " "	3	2	1
9.	"	Garnet Chili, " "	3	2	1
10.	"	Any other sort, named " "	3	2	1
11.	Swede Turnips,	6 roots, purple top	4 3	2	1
12.	"	" 6 roots, green top	3	2	1
13.	Turnips,	6 roots, White Globe	3	2	1
14.	"	6 roots, Aberdeen Yellow, green top	3	2	1
15.	Carrots,	12 roots, red long.	3	2	1
16.	"	12 " red half long	4 3	2	1
17.	"	12 " White Belgian	3	2	1
18.	"	12 " White Intermediate or Vosges.	3	2	1
19.	Mangel Wurzel,	6 roots, Long red	4 3	2	1
20.	"	" 6 " Red Globe.	3	2	1
21.	"	" 6 " Yellow Globe	3	2	1
22.	"	" 6 " Long Yellow.	3	2	1
23.	"	" 6 " Intermediate Yellow	3	2	1
24.	"	" 6 " Golden Tankard	3	2	1
25.	Kohl Rabi,	6 roots	3	2	1
26.	Beets,	6 roots, white sugar, red or green top	3	2	1
27.	2 Mammoth Squash or Pumpkin,	for cattle.	3	2	1
28.	Pumpkin,	3 common yellow field	3	2	1
29.	For the best 6 stalks of Corn,	suitable for ensilage.	4	3	2
30.	Best collection of Ensilage Corn,	5 varieties, correctly named, 5 stalks each	6 5	4	3
31.	Best Sheaf of Wheat	{ Butts of Sheaves to be not less than 15 inches in diam- eter. }	3	2	1
32.	" " Barley		3	2	1
33.	" " Oats		3	2	1
34.	" " Black Oats		3	2	1
35.	Onions, red,	1 bushel basket.	4 3	2	1
36.	"	yellow, 1 bushel basket	4 3	2	1
37.	Tomatoes,	1 bushel basket.	4 3	2	1

Entries positively close 16th August

Class 89.—TOBACCO.


SEC.	1st.	2nd.	3rd.
1. Best Leaf Tobacco, Connecticut variety, 25 lbs	\$6	\$8	\$2
2. Best Tobacco in rolls, not less than 10 lbs	4	3	2
3. Best collection of Leaf Tobacco, correctly named	4	3	2

 Tobacco must be Canadian Growth.

HONEY AND APIARY SUPPLIES.

Entries close Monday 16th August.

(Entrance Fee, 25c. each Section.)

 All Honey exhibited must be the production of the exhibitor's Apiary.

The quantity specified in the various sections is the amount of Honey on which the award of the prizes is to be made.

Exhibitors selling Honey during the Exhibition (for which right a small fee will be charged) will not be allowed to make any removal from their exhibits, but may have a special supply at hand, from which the Honey sold may be taken.

Exhibitors must have their exhibits arranged before the opening of the Exhibition.

A breach of these rules will forfeit any prize that may be awarded.

Class 90.—Open to all Bee-Keepers.


SEC.	1st.	2nd.	3rd.
1. Best display of 50 lbs. of extracted granulated Honey in glass.	\$8	\$6	\$4
2. Best display of 250 lbs. of liquid extracted Honey, of which not less than 100 lbs. must be in glass, quality to be considered.	8	6	4
3. Best display of 250 lbs. of Comb Honey in sections, quality to be considered	8	6	4
4. Best display of 20 lbs. of Comb Honey in sections, quality to be considered, that is to say, clean sections and best filled	5	3	2
5. Best display of extracted Linden Honey, 50 lbs. in glass, quality to be considered	5	3	2
6. Best display of 50 lbs. extracted liquid clover Honey, in glass, quality to be considered.	5	3	2
7. Best Beeswax, not less than 10 lbs. (manufacturers of comb foundations excluded)	5	3	2
8. Best foundation for brood chamber	Medal.		
9. " " sections	"		
10. Best Apiarian supplies	Medal and Diploma.		
11. Style and assortment of glass for retailing extracted Honey	Medal.		
12. The most practical new invention for the Apiarist	Medal.	5	

Entries positively close 16th August

- | | 1st. | 2nd | 3rd. |
|--|--------|-----|------|
| 13. The greatest variety of uses to which honey may be put, illustrated by individual samples of the different things into which it enters as a component, for example, say one or 2 samples each in canned fruits, cakes, pastry, meats, vinegars, etc. . . | 6 | 4 | 2 |
| 14. For the most useful Queen nursery cage | Medal. | | |

NATURAL HISTORY DEPARTMENT.

Class 91.—Economic Minerals and Ores of Canada.

 Societies, Museums, Colleges, &c., may exhibit, but not in competition for money prizes.

At least one-fourth of the specimens in every entry in this class must not have been exhibited here before.

The Judges will not give any award unless the exhibits come up to the required standard of excellence.

Exhibitors must mention the locality where the specimens are found.

SEC.

1. Birds	Medal.
2. Insects	"
3. Fish	"
4. Plants	"
5. Ores	"
6. Economic minerals.	"
7. Extra entries	"

AGRICULTURAL IMPLEMENTS.

COMMITTEE:—G. W. Sadler, Esq. (Chairman), Messrs. W. Ewing, J. H. Stanton, L. Bessette, R. J. Latimer, H. Moody.

Entries positively close on **MONDAY, 16th August.**

Entry Fee 25c. each article. No charge is made for space.

Motive Power

The Agricultural Implements Department has ample accommodation. The buildings are reserved for machinery in motion, and exhibitors can arrange to supply their own motive power.

Exhibitors who prefer exhibiting in the open air can obtain the requisite space.

Class 92.—Agricultural Implements.

Grain and Seed Drills, Mowing and Reaping Machines, Threshers, Crushers, Fanning and Grist Mills, Grinders, Cutters, Ploughs, Cultivators, Harrows, Planters, Portable and Traction Engines, and all other Machines and Implements used for Agricultural purposes.

MISCELLANEOUS

INDUSTRIAL DEPARTMENT.

COMMITTEE:—L. I. Boivin, Esq., (chairman) Messrs. S. H. C. Miner, Hon. J. D. Rolland, P. Galibert, G. W. Sadler, Colin McArthur.

Entries positively close on Monday, 16th August.

(Entrance Fee, \$1.00 each Entry.)

Space is provided free, but if special locations are desired, the right is reserved to make a charge for the same.

It is recommended that the entries should embrace a full assortment of each kind of articles exhibited, and that the goods be artistically and attractively arranged for exhibition.

Class 93.—Fire Escapes, Diving Apparatus, Life Preservers, Yachts, Boats and Appliances, etc.

Class 94.—Safes and Scales, etc.


Class 95.—Hardware, Tools and Cutlery, etc.

Class 96.—Gates and Fencing, etc.

Class 97.—Gas and Electric Fixtures and Wire Work, etc.

Class 98.—Goldsmiths' and Silversmiths' Work, Jewellery, etc.

Class 99.—Skilled Mechanical Work.

 A Medal will be given in each section of class 99, if exhibit is worthy.

Sec.

1. Specimen of workmanship by mechanics.
2. " " by apprentices.
3. " " by non-mechanics.

Class 100.—House Furnishings, Refrigerators, etc.

Class 101.—Tents, Bunting, etc.

Class 102.—Leather, Boots, Shoes, Shoemakers' Tools, etc.

Class 103.—Harness and Saddlery, etc.

Class 104.—Engine Hose and Rubber Goods, etc.

Class 105.—Trunks, Valises, etc.

Class 106.—Furniture and Upholstery, etc.

Entries positively close 16th August

- Class 107.—Glassware, Earthenware, etc.
Class 108.—Bookbinding, Printing and Stationery, etc.
Class 109.—Paperhangings, Shades, Blinds, etc.
Class 110.—Groceries, Provisions, Wines, Liquors, etc.
Class 111.—Building Work and Materials.
Class 112.—Knitting and Sewing Machines.
Class 113.—Musical Instruments.
-

TEXTILE FABRICS.

- Class 114.—Woollen Goods.
Class 115.—Knitted Goods.
Class 116.—Cotton Goods.
Class 117.—Carpets, Mats, etc.
Class 118.—Wearing Apparel.
Class 119.—Flax and Hemp Goods.
Class 120.—Fur, Hats, Caps, etc.
Class 121.—Chemical Manufactures, etc.
Class 122.—Philosophical and Surgical Instruments and Appliances.
-

STOVE DEPARTMENT.

(Entrance Fee, 25c. each up to five—over five 10c. each.)

- Class 123.—Stoves, Ranges, Furnaces, Oil Stoves, etc.
Class 124.—Castings, Holloware, etc.
-

CARRIAGE DEPARTMENT.

S. H. C. Miner, Esq. (Chairman).

(Entrance Fee, 25c. each vehicle.)

- Class 125.—Carriages, Sleighs, Waggon and Materials, etc.

Landaus, Victorias, Phaetons, Waggon, Carriages, Sleighs, Buggies, and all kinds of vehicular materials.

- Class 126.—Bicycles, Tricycles, etc.
-

Entries positively close 16th August

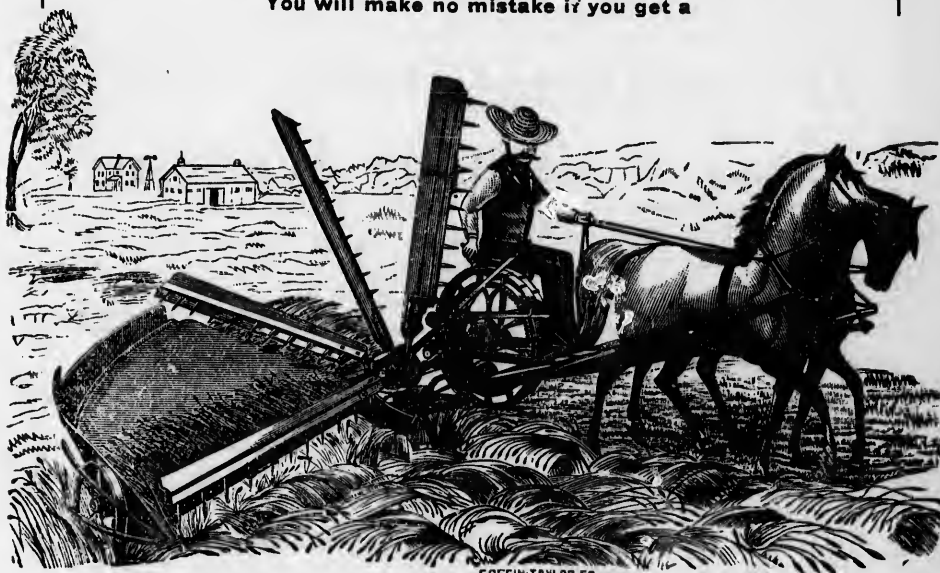
WHEN YOU WANT A

... FARM IMPLEMENT ...

... FOR ...

SPRING, SUMMER, AUTUMN OR WINTER

You will make no mistake if you get a



COFFIN-TAYLOR & CO

MASSEY-HARRIS MACHINE

ROLLER BEARINGS

BALL BEARINGS...

Cause Fast Running Machines to work easy.

EVERYTHING UP-TO-DATE AND BEYOND.

See our Agent in your locality
or write direct to

Massey Harris Co. Ltd,

and Catalogue for the asking.

340 ST. PAUL ST., Montreal.

Billiards

TELEPHONES :
BELL 6067
MERCHANTS 213.

E. L. ETHIER & CO.,

88 ST. DENIS ST., Montreal.

Manufacturers of Billiard, Pool Tables and Bowling Alleys, Importers of Billiard Cloth, Balls, Tips, etc., etc., etc. Our Columbus Electric Cushions are known to be the best in use.

The National Dress Cutting Academy

ESTABLISHED
In 1890.

This Institution is
the most spacious
and important in
the Dominion.

88 St. Denis Street

MRS. E. L. ETHIER,
Director.

...Montreal

Don't go Home

Until you visit our beautiful exhibit
of WALL PAPER in complete Com-
binations.



To the left of the Main entrance on
West side will be seen the most artis-
tic designs & colorings ever produced.

Goods all manufactured
... by ...

COLIN McARTHUR & CO.

1030 Notre Dame St., Montreal.



LADIES' AND CHILDREN'S DEPARTMENT.

(Entry Fee, 5 entries and under 50c., 5 to 15 entries \$1.00.,
over 15 entries \$2.00.)

It is desired that this Department should be made most interesting and attractive.

Exhibitors who do not desire to come themselves may mail their entries and send their work by express or parcel-post, and can rely upon their work being displayed to the best advantage, and carefully repacked and returned, within three days after the exhibition closes. Address :—Superintendent Ladies' Dept., Exhibition Grounds, Montreal.

By this means it is hoped that all mistakes will be avoided and that exhibits will be arranged to the best advantage.

Suitable glass cases have been provided, so that the most delicate articles may be exhibited without injury.

All entries in this Department may be made on the Grounds, and exhibitors should bring the articles with them in order that they may be correctly classified.

For this purpose the Superintendent will be on duty in the Ladies' Department, Main Building, from noon on Tuesday, the 17th August and following days.

Articles exhibited in collections cannot compete in other sections.

Work entered and handed in, after the opening, may be exhibited, but cannot compete for a prize.

In all cases the Judges will have the right to withhold any prize, where the work is not of sufficient merit, even if there be competition.

All articles competing in this Department must be the work of the exhibitor, strictly the work of ladies or children, and entered in the name of such.

As attempts have frequently been made to obtain prizes on old articles, which have been previously exhibited, exhibitors are particularly requested to note that articles, which have been awarded prizes at former Montreal Exhibitions, cannot be entered for competition.

Any exhibitor may be required to make a statutory declaration that the work exhibited by her is of her own make and has not been awarded a prize at any previous Montreal Exhibition.

The Company will take reasonable precautions to ensure the safety of articles sent for

exhibition, but the owners themselves must take the risk of exhibiting them ; and should any article be accidentally injured, lost or stolen, the Exposition Company will give all the assistance in their power towards the recovery of the same, but WILL NOT MAKE ANY PAYMENT for the value thereof.

Removal of goods:—Exhibits may be removed at noon on Saturday, 28th August.

The Prize List has been remodelled, and the classification re-arranged as follows :

Class 127.—China Painting and Decorative Work (open to Amateurs only.)

Class 128.—Professionals and those who sell work.

Class 129.—Needle-Work, Embroidery, Lace, &c.

Class 130.—For Ladies 60 Years and over.

Class 131.—House-Keeper's Department & Domestic Manufactures.

Class 132.—Children's Department.

**Class 127.—China Painting and Decorative Work
(open to Amateurs only.)**

SEC.	1st.	2nd.
1. Best collection in this class, all the work of one exhibitor [at least 5 articles]	\$8	\$4
2. Five o'clock tea set	4	2
3. Ice cream set	4	2
4. Fish set	4	2
5. After dinner coffee set	4	2
6. Asparagus dish	4	2
7. Game set	4	2
8. Rose bowl	4	2
9. Bon-bon dish	4	2
10. Cheese dish.	4	2
11. Cake plate	2	1
12. Cup and saucer	4	2
13. Royal Worcester decoration	4	2
14. " Derby "	4	2
15. Doulton decoration	4	2
16. Painted mirror	4	2
17. Painted screen	4	2
18. Painted table	4	2
19. Umbrella stand	4	2
20. Painted fan	4	2
21. Plaque on panel	4	2
22. Painting on satin	4	2

The Largest
Manufacturers

...OF FINE FURS

In
Canada
Are



Chas. Desjardins & Co.

1537
1539 St. Catherine St.
1541

Visitors are respectfully
invited to inspect the
COMMODIOUS
SHOW-ROOMS

... MONTREAL



A Prosperous Farmer

will always have an air of success about himself and his farm. Nothing will give such an air of prosperity to your houses, barns, wagons, buggies, tools, etc., as the careful use of paint. There is economy in paint. A barn that is painted, and kept painted, will not wear out half as fast as one that is allowed to become weather beaten. That is true of everything paintable

THE SHERWIN-WILLIAMS CREOSOTE PAINT

is exactly suited to the coarse-grained woods generally used in barns, fences, etc. It contains creosote. Creosote is a disinfectant and prevents decay.

Our booklet, "Paint Points," tells why it is economical to use paint. It tells what to paint, and how to paint. It is a handy book to have about the house. Send for it to-day—it is free. For booklet, address
21 St. Antoine Street, Montreal.

THE SHERWIN-WILLIAMS CO.

CLEVELAND
CHICAGO
NEW YORK
MONTREAL

xx

The Brantford, Redbird,

... Canada's Best

BICYCLE

... AND ...

Electric Puncture proof tires
with a record of 5,800 miles
without a puncture



Is the Combination you want
on your 1897 Mount.

THE GOULD BICYCLE CO'Y,

No. 2417
ST. CATHERINE STREET.

	1st.	2nd.
37. Crocheting, (silk).	\$2	\$1
38. Knitted lace (cotton)	2	1
39. " " (silk)	2	1
40. Embroidered screen	3	2
41. Jewell embroidery	2	1
42. Set of table mats.	\$2	\$1
43. Infant's bib.	1	50c.
44. Table centre	3	2
45. Baby's pillow	2	1
46. Pudding dish cover.	1	50c.
47. Paper lamp shades	2	1
48. " flowers	2	1
49. Lamp-shade [silk or lace].	2	1
50. Pressed ferns	2	1
51. Novelty not named, if considered worthy	3	2
52. Best display of Kindergarten work	3	2
53. Art work, made on sewing machine.	3	2
54. Burnt Poker Work.	2	1
55. Honiton Lace	3	2
56. Netting.	2	1
57. Home made shirt	2	1
58. Apron trimmed	1	50c.
59. Best invention for household or domestic purposes (not apparel) if worthy.	3	2
60. Extra entries		

Class 130.—Class for Ladies 60 years and over.

Sec.	1st.	2nd.
1. Knitted stocking.	\$2	\$1
2. Knitted mittens	2	1
3. Knitted socks	2	1
4. Knitted lace	2	1
5. Pieced quilt in silk.	2	1
6. Pieced quilt in print	2	1
7. Wool quilt, (knitted or crochet)	2	1
8. Plain needle work	2	1
9. Patching	2	1
10. Darning	2	1
11. Cushion	2	1
12. Knitting bag	2	1
13. Fancy article, any kind.	2	1
14. Trimmed basket	2	1
15. Best collection, six articles	2	1
16. Extra entries	2	1

DOMESTIC MANUFACTURES.

Class 131.—House Keeper's Department.

HOME MADE PRESERVES, PICKLES, BREAD, ETC.

SEC.		1st.	2nd
1.	Preserved fruit [collection]	\$3	\$1.50
2.	Pickles ["]	3	1.50
3.	Sweet pickles ["]	3	1.50
4.	Jelly.	2	1
5.	Tomato catsup.	2	1
6.	Chili sauce	2	1
7.	Maple sugar.	2	1
8.	Maple syrup.	2	1
9.	Marmalade	2	1
10.	Fancy jelly-cake.	2	1
11.	Fruit cake	2	1
12.	Pies	2	1
13.	Home-made wine	2	1
14.	" vinegar	2	1
15.	" candy.	2	1
16.	" bread.	2	1
17.	" Graham.	2	1
18.	Biscuits, yeast.	2	1
19.	Biscuits, Baking powder	2	1
20.	Home-made soap	2	1
21.	Toilet soap	2	1
<hr/>			
		1st.	2nd.
22.	Farmer's Bread	2	1
23.	" Pickles	2	1
24.	" Cake	2	1
25.	" Buns	2	1
26.	" Wine.	2	1
27.	" Vinegar.	2	1
28.	" Candy	2	1

In this class, the articles entered to be received on Monday 23rd August, up to 10 a.m.

	1st.	2nd
23. Painting on bolting cloth	\$4	\$2
24. " on tapestry	4	2
25. " on glass	4	2
26. " on wood	2	1
27. Portfolio	4	2
28. Sofa pillow	4	2
29. Portière	4	2

Oil Paintings, Pictures, (original)

30. Landscape	4	2
31. Figures	4	2
32. Flowers and fruit	4	2
33. Water Colors, original, landscape or marine	4	2
34. India ink drawing	4	2
35. Crayon, black and white	4	2
36. Pastels, any subject	4	2
37. Drawing from life	4	2
38. Pencil drawing	4	2
39. Best collection of originals in oils	4	2
40. Extra entries	4	2

Class 128.—For Professionals and those who Sell Work, including Ladies' Repositories, etc.

The term "Professional" as distinguished from "Amateur" is intended to apply to professional teachers of ladies' work and those who make work for sale, or who are accustomed to sell their work.

Entrance fee for Repository Collections \$5 00

Entrance fee for other sections 1 00

Exhibitors paying the fee of \$5 will have the privilege of taking orders and selling their goods.

Sec.	1st.	2nd.
1. Best collection of ladies' work, domestic	Medal and Diploma	
2. Best collection of painting on silk	"	"
3. Best collection of painting on satin	"	"
4. Best collection of painting on china	"	"
5. Best collection of tapestry	"	"
6. Collection of needle-work	"	"
7. Collection of machine-work	"	"
8. Badges and Regalias	"	"
9. Ecclesiastical embroidery	2	1
10. Bullion embroidery	2	1
11. Appliqué on various materials	2	1
12. Infant's trousseau, complete	2	1
13. Infant's jackets	2	1

	1st.	2nd.
14. Bootees	\$2	\$1
15. Infant's caps and bonnets	2	1
16. Novelties in lace (domestic)	2	1
17. Extra entries	2	1

Class 129.—Needle-work, Lace, Drawn-work, Embroidery, Etc.

SEC.	1st.	2nd.
1. Best collection of work, all the work of one exhibitor	\$7	\$4
2. Ideal Honiton.	3	2
3. Point lace, Battenburg	3	2
4. Iridescent or rainbow embroidery.	3	2
5. Tea cloth and cosey	3	2
6. 1 doz. finger bowl doilies	3	2
7. Drawn work	3	2
8. Sofa cushion	3	2
9. Table scarf	3	2
10. Piano scarf	3	2
11. Embroidery on bolting cloth	3	2
12. " " satin	3	2
13. " " linen	3	2
14. " " satin sheeting	3	2
15. " " felt	3	2
16. Toilet set	2	1
17. Pair slippers	2	1
18. Tidy.	2	1
19. Handkerchief case	2	1
20. Veil vase.	2	1
21. Bedspread	3	2
22. Pillow shams	2	1
23. Mould work.	3	2
24. Embroidery photo-frame	2	1
25. Kensington embroidery	3	2
26. Mantel drapery	3	2
27. Lunch cloth and six doilies	3	2
28. Outline work	2	1
29. Braiding display	2	1
30. Baby's carriage cover	2	1
31. " jacket (in silk)	2	1
32. " shawl (in silk)	2	1
33. Sideboard cover	2	1
34. Embroidered ottoman (mounted)	3	2
35. Tatting.	2	1
36. Crocheting (cotton)	2	1



The New Williams

Is the right Sewing Machine to buy if you want to get satisfaction for your money. It is thoroughly reliable and up-to-date in every respect. Has all the modern improvements and does all kinds of family work and light manufacturing with equal facility.



**EASY TO LEARN.
EASY TO PAY FOR.**



**EASY TO RUN.
TERMS TO SUIT ALL.**

COME AND SEE US.

We also manufacture and sell
The Celebrated



Empire . . . Type=Writer

Which needs merely
to be seen, to be
appreciated.

Owing to its Simplicity and Low Price this new writing machine is rapidly superseding all the old fashioned high priced writers.

PRICE ONLY \$55.00.

**The Williams
Manufact'r'g Co. Ltd.**



246 St. Lawrence St.

... MONTREAL

Wearing Apparel, Quilts, Etc.

Sec.	1st.	2nd.
29. Two pair of woollen stockings	\$2	\$1
30. " " socks, hand knit.	2	1
31. " " gloves, " "	2	1
32. " " mittens " "	2	1
33. Two lbs. stocking yarn	2	1
34. Pair of woollen blankets.	3	2
35. 12 yards of woollen cloth	3	2
36. Piece étoffe du pays	3	2
37. Piece woollen flannel	3	2
38. Piece woollen carpet	2	1
39. Hearth rug	2	1
40. Piece rag carpet (catalonne)	3	2
41. Rag mat	2	1
42. Woollen coverlet.	2	1
43. Piece check for cloaking, 6 yards.	2	1
44. Counterpane	2	1
45. Piece diaper, 12 yards	2	1
46. Piece linen, 12 yards	3	2
47. Linen thread, half pound	2	1
48. Horse blankets, 2	2	1
49. Ceinture Fléchée.	2	1
50. Best muff and cap, imitation of Persian lamb	3	2
51. Pieced quilt, silk	2	1
52. Pieced quilt, cotton.	2	1
53. Cushion	2	1
54. Woollen shawl or cape	2	1
55. Carriage rug	2	1
56. Knitted lace	2	1
57. Crochet lace	2	1
58. Sofa and chair tidy.	2	1
59. Pillow shams	2	1
60. Apron	2	1
61. Samples of domestic dyeing	2	1
62. Two linen table cloths	3	2
63. Two suits of men's underwear	2	1
64. Wool slippers	3	2
65. Best collection of ladies and children's wear	4	3
66. Extra entries	2	1

CHILDREN'S DEPARTMENT

Class 132.

All must be the work of children under 15.

(5 entries and under, 25c. ; 5 to 15 entries, 50c. ; over 15 entries \$1.00.

SEC.	1st.	2nd.
1. Best display of sewing	\$3	\$2
2. Best display of mechanical work	3	2
3. Hem-stitching.	1	.50
4. Neatest apron	1	.50
5. Darning	1	.50
6. Silk embroidery	1	.50
7. Feather stitching	1	.50
8. Embroidered hat band	1	.50
9. Drawn down thread work.	1	.50
10. Tatting	1	.50
11. Map drawing	1	.50
12. Printing	1	.50
13. Pencil drawing	1	.50
14. Flowers, oil painted on any material	1	.50
15. Landscape	1	.50
16. Amateur photography.	1	.50
17. Christmas card, oil or water color.	2	1
18. Painting (in oil)	2	1
19. Collection of postage stamps	2	1
20. Collection of insects	2	1
21. Collection of shells.	2	1
22. Specimen of kindergarten work, children under 7 years	2	1
23. Doll and trousseau	2	1
24. Crochet work of any kind	1	.50
25. Pincushion	1	.50
26. Doll's bed, furnished	1	.50
27. Shoulder cape.	1	.50
28. Tam o'Shanter	1	.50
29. Table centre	1	.50
30. Tray cloth	1	.50
31. Carver's cloth	1	.50
32. Stocking bag	1	.50
33. Portfolio or blotter	1	.50
34. Handkerchief case	1	.50
35. Shaving case	1	.50

FEATHERSTON



PIANOS



ARE

HIGHEST GRADE

SOLD AT MODERATE PRICES

Manufactured
by

The Featherston Piano Co. Ltd.

443 ST. JAMES STREET, MONTREAL.

THOMAS SONNE,

193 COMMISSIONERS STREET,

Corner St. Sulpice Street.
BELL TELEPHONE 1161.



MONTREAL

MANUFACTURERS OF

Awnings, Tents, Sails and Flags of all Nations



Have in Stock
Large Marquees
for Refreshments
and Shows.

All kinds of Tents
for Hire.

Waggon Covers.

Horse Covers.

Tarpaulin and
Oilskin Clothing.

Montreal Provincial Exhibition

19th to 28th AUGUST, 1897.

MONTREAL HORTICULTURAL SOCIETY

... AND ...

Fruit Growers' Association of the Province of Quebec.

Hon. President, W. W. OGILVIE.
President, W. M. RAMSAY.

Hon. Vice-President, ROBERT MACKAY.
Vice-President, C. P. NEWMAN.

OPEN TO THE WORLD.

Rules and Regulations

To Which the Careful Attention of the Judges is Requested.

1. All specimens placed in competition for premiums must be *bona fide* GROWN BY THE COMPETITOR OR EMPLOYER ; and if proved not to be such, the competitor will be disqualified from receiving any premium whatever at the Exhibition. Each competitor will be required to sign a declaration on his Entry Form to the foregoing effect, which, however, does not cover "made up" work.
2. All plants, flowers, fruits and vegetables should be carefully labelled with their proper names. Botanical names to be added as far as possible.
3. In awarding premiums on plants in pots, special reference will be had to the beauty of the specimens, profusion of bloom, and evidence of superior cultivation.
4. Any deviation, more or less, from the exact quantities or numbers specified in the schedule will disqualify an exhibit.
5. Cards corresponding with the entries will be furnished the exhibitors on the morning of the opening day of the Exhibition. Exhibitors alone will be responsible for the placing of them and are requested to satisfy themselves that the cards correctly describe the objects exhibited. The Society cannot be responsible for any mistake arising from the non observance of this or any other rule.

No entries will be received later than 14th August 1897.
(See Rule 6.)

6. Entries must be made in writing, on forms which will be supplied by the Secretary, and must contain the declaration of good faith required by Art. I., signed by the competitor; and in order to allocate the space required in each section, all entries must reach the Secretary, P. O., box 778, Montreal, on or before 14th August, 1897, **after which date no entries will be received.**

7. Members of the Horticultural Society will enter their exhibits free of charge. To non-members the following charges will be made, viz: over 10 entries, \$1.00; 10 entries and under 50 cents. Fees must, in all cases, accompany the entries.

8. All articles to be exhibited for premiums must be in the building by noon on the day of the opening of the exhibition. One hour will be given thereafter for exhibitors to finish placing and ticketing their articles, at the close of which time they must be prepared to leave the building, in order that the Judges may make their awards. Exhibitors are requested to second the efforts of the Association in enforcing this rule by bringing their exhibits early.

9. The Judges shall have the discretionary power of withholding premiums, if, in their opinion, the articles exhibited do not merit them; and they will be particularly requested to keep this rule in mind.

10. Exhibitors are requested to bring for exhibition any new or rare fruits, flowers, plants, or other objects of particular interest for which no premium is offered in the prize list; and premiums will be awarded by the Judges if deemed worthy.

11. The Judges shall not be competitors in any class for which they are to award premiums.

12. On recommendation of the Judges, or of a committee appointed by the Society, the Directors may award a diploma for exceptional excellence, if in their opinion it is deemed advisable.

13. The decision of the Judge or Judges, as regards the premiums, shall be final, and no protest will be entertained except in case of error or when the awards or exhibits are not made in conformity with the rules of the society. Every protest must be accompanied with a deposit of \$5, which will be forfeited unless protest is sustained, and must be made within 24 hours after prizes have been awarded.

14. No individual, except the Judges, shall be allowed to touch or handle any fruit, flower, plant, or other article exhibited, and any exhibitor proved guilty of having tampered with any article on exhibition, or section card, shall be deprived of all premiums he may have been awarded.

15. Committees may be appointed by the Society to assist in naming fruits and plants about which exhibitors may be doubtful, but the Society does not assume any responsibility in the matter.

16. The Society will not be responsible for damage done to plants or other exhibits during or after the Exhibition, but all reasonable care will be taken of them.

17. No exhibitor will be allowed to compete for more than one prize in the same

No entries will be received later than 14th August 1897.
(See Rule 6.)

section, and no article that has already been awarded a prize will be entitled to another, excepting special prizes offered for aggregation of points.

18. The Society, will, under no circumstances, pay charges on plants or fruits, etc., sent for competition.

19. All articles exhibited shall remain in the building until 1 p.m. on the last day of the Exhibition, when they will be delivered to the exhibitors, unless otherwise directed. Permission may be had from the Committee of Management to remove any plant which might be likely to suffer by remaining during the whole of the Exhibition, but all such plants must be replaced by others to the satisfaction of the committee.

20. Any person residing in the Island of Montreal may become a member of the Society on payment of an annual membership of Two Dollars, and any person residing in the Province of Quebec, outside the Island of Montreal may become a member on payment of One Dollar. All members will receive tickets of admission to the Exhibition for their own use. They will also receive a copy of any Reports published by the Society, and will be permitted the use of any of the books of reference in the Society's Library. Members paying an annual subscription of \$2.00 will receive *The Canadian Horticultural Magazine*, published monthly by the Society.

21. Prize lists and all other information may be obtained by applying to the undersigned; and all persons interested in Horticulture are invited to contribute articles for Exhibition.

W. ORMISTON ROY,

Secretary-Treasurer,

Montreal Horticultural Society,

P. O. Box 778, MONTREAL.

S. C. STEVENSON,

Manager and Secretary,

Montreal Exposition Co.



No entries will be received later than 14th August 1897.
(See Rule 6.)

SPECIAL NOTICE

THE JUVENILE MEMBERSHIP

Montreal Horticultural Society.

The Juvenile Members are again invited to participate in the forthcoming Exhibition, and each member will be furnished by the Society as heretofore with *two plants*, the better ONE of which is to be placed in competition:

Every Juvenile Member will be admitted to the whole Exhibition, on presenting his ticket of membership.

The Juvenile Members last year numbered over one thousand. The Executive of the Society will welcome a large accession to the membership this year, and every member should endeavor by assiduous care and intelligent treatment so to cultivate the plants given them, that, while only those which excel can receive first honors, every plant may merit a place in the Exhibition, and be creditable alike to the exhibitor and to the Exhibition.

PRIZES will as hitherto be awarded by the Society to the successful exhibitors, according to the number and degree of merit of the exhibits from each School.

MEMENTOES of their success will also be presented to the three Schools whose aggregate exhibits attain the highest degree of merit.

It is especially enjoined that the cultivation of the plants, and the shifting of them into larger pots as necessity arises, must be accomplished by the children's hands alone.

COTTAGE GARDEN COMPETITION.

Entries close 30th June 1897.

CITY COTTAGE GARDENS.	1st Prize.	2nd Prize.
Cottage Gardens within the limits of the City of Montreal	Gold Medal offered by E. R. Watson, Westmount.	Silver Medal offered by Jules Betrix, Gardener.
Cottage Gardens within the limits of the City of Montreal, size of building lot not to exceed 3,000 feet.	Gold Medal offered by a	Silver Medal offered by a Friend.
SUBURBAN COTTAGE GARDENS.	Gold Medal offered by D. Williamson, Westmount.	Silver Medal offered by The Society.
Cottage Gardens beyond the limits of the City of Montreal		

CLASS A, (OPEN.)

SEC.	ARTICLES TO BE EXHIBITED.	1st Prize.	2nd Prize.	3rd Prize.	4th Prize.
1.	Collection of Decorative and Flowering Plants. 100 sq. feet	\$35 00	\$30 00	\$25 00	\$20 00
2.	Collection of Decorative and Flowering Plants. 50 sq. feet	20 00	18 00	15 00	12 00
3.	3 Adiantums, distinct varieties.	4 00	3 00	2 00	
4.	Adiantum Farleyense, specimen	2 00	1 00		
5.	Anthurium, specimen in bloom	3 00	2 00	1 00	
6.	American Aloe, specimen	3 00	2 00	1 00	
7.	6 Begonias, foliage, distinct varieties	3 00	2 00	1 00	
8.	6 Begonias, tuberous, single, distinct varieties	4 00	3 00	2 00	
9.	3 Begonias, tuberous, double, distinct varieties	3 00	2 00	1 00	
10.	4 Caladiums, distinct varieties.	4 00	3 00	2 00	
11.	2 " " "	3 00	2 00	1 00	
12.	4 Crotons, distinct varieties	4 00	3 00	2 00	
13.	2 " " "	3 00	2 00	1 00	
14.	Cycas, specimen	4 00	3 00	2 00	
15.	3 Dracaenas, distinct varieties.	3 00	2 00	1 00	
16.	Dracaena, specimen	3 00	2 00	1 00	
17.	4 Ferns, distinct species, tree ferns excluded.	4 00	3 00	2 00	
18.	2 " " " " " "	3 00	3 00	1 00	
19.	Fern, specimen. " tree fern "	2 00	1 50	1 00	
20.	Tree Fern, specimen	4 00	3 00	2 00	
21.	3 Fuchsias, distinct varieties, in bloom	3 00	2 00	1 00	
22.	Fuchsia, specimen	2 00	1 50	1 00	
23.	3 Geraniums, Zonal, single, distinct varieties, in bloom	3 00	2 00	1 00	
24.	3 Geraniums, Zonal, double, distinct varieties, in bloom	3 00	2 00	1 00	
25.	3 Geraniums, 1 Tricolor, 1 Bronze and 1 silver variegated.	3 00	2 00	1 00	
26.	Gloxinias, 6 in bloom, distinct varieties.	3 00	2 00	1 00	
27.	Ficus Elastica, specimen	3 00	2 00	1 00	
28.	Ficus Elastica, variegata, specimen	3 00	2 00	1 00	
29.	Hanging Basket of Plants	2 00	1 50	1 00	
30.	Hanging Basket of Ferns.	2 00	1 50	1 00	

75

Doors of Exhibition Building close at noon, sharp. Exhibits to be staged and Exhibitors ready to leave the building at 1 p.m. (See Rule 8.)

SEC.	ARTICLES TO BE EXHIBITED.	1st Prize.	2nd Prize.	3rd Prize.	4th Prize.	5th Prize.
PLANTS—Continued.						
31.	Lygodium Scandens, specimen	\$3 00	\$2 00	\$1 00		
32.	3 Marantas, distinct varieties'	3 00	2 00	1 00		
33.	Maranta, specimen	2 00	1 00			
34.	2 Nepenthes, distinct varieties.	3 00	2 00	1 00		
35.	Nepenthes, specimen	2 00	1 00			
36.	3 Orchids, in bloom.	3 00	2 00	1 00		
37.	Orchid, in bloom, specimen.	2 00	1 50	1 00		
38.	6 Palms, distinct varieties	6 00	5 00	4 00	3 00	
39.	3 Palms, distinct varieties	4 00	3 00	2 00	1 00	
40.	6 Palms, distinct varieties, in pots not larger than 6 inches.	4 00	3 00	2 00	1 00	
41.	Palm, specimen.	4 00	3 00	2 00	1 00	
42.	Vase of Plants	3 00	2 00	1 00		
43.	6 Plants for Table Decoration, distinct va- rieties, size of pots not to exceed 6 inches.	4 00	3 50	3 00	2 50	2 00
44.	Selaginellas, 6 pans, distinct varieties.	3 00	2 00	1 00		
45.	Stove or Greenhouse Flowering Plant, speci- men, in bloom.	3 00	2 00	1 00		
46.	6 Stove or Greenhouse Foliage Plants, dis- tinct varieties, palms and ferns excluded	4 00	3 00	2 00		
47.	Stove or Greenhouse Foliage Plant, speci- men, (palms and ferns excluded)	3 00	2 00	1 00		
48.	3 French Cannas, distinct varieties.	4 00	3 00	2 00	1 00	
49.	French Canna, specimen	3 00	2 00	1 00		
50.	2 Hydrangeas	4 00	3 00	2 00		
51.	Hydrangea, specimen	3 00	2 00	1 00		
52.	Stove or Greenhouse Climbing Foliage Plant, specimen, not otherwise included in prize list.	3 00	2 00	1 00		
53.	Stove or Greenhouse Climbing Plant, in bloom, specimen, not otherwise included in prize list	3 00	2 00	1 00		
54.	3 Coleus, distinct varieties, size of pots not to exceed 8 inches	3 00	2 00	1 00		
55.	Coleus, specimen, size of pot not to exceed 8 inches	2 00	1 50	1 00		
56.	Liliums, 3 pots	3 00	2 00	1 00		
57.	Asparagus Plumosus, specimen	2 00	1 50	1 00		
58.	Collection of Cacti and Succulents, not more than one plant of any one variety	4 00	3 00	2 00		

No entries will be received later than 14th August 1897.
(See Rule 6.)



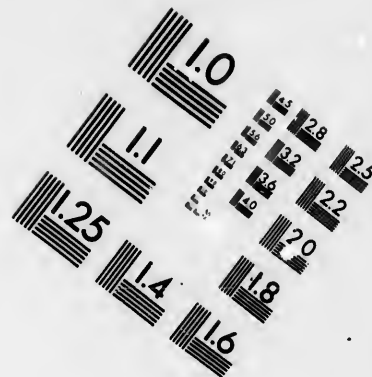
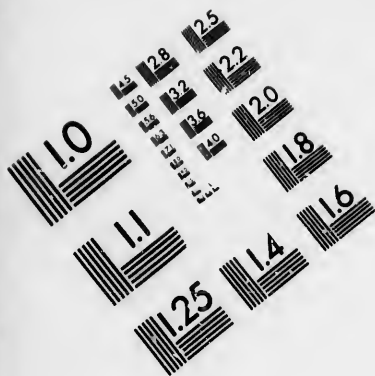
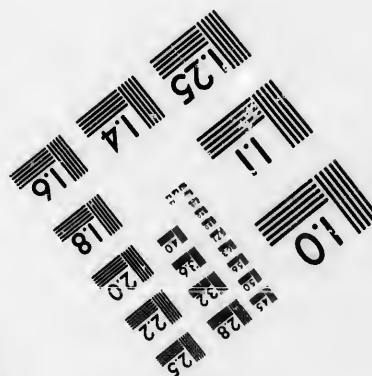
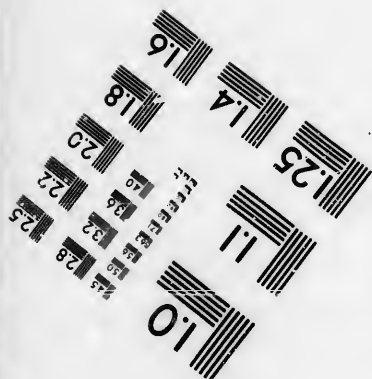
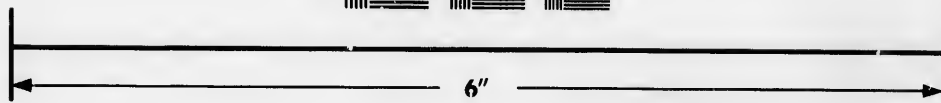
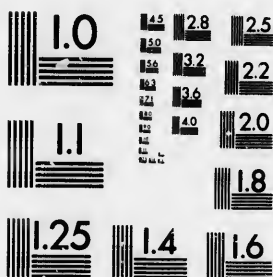


IMAGE EVALUATION TEST TARGET (MT-3)



Photographic
Sciences
Corporation

23 WEST MAIN STREET
WEBSTER, N.Y. 14580
(716) 872-4503

18 20 22 25 28
15 16 17 18 19 20 21 22 23 24 25 26 27 28 29 30 31 32 33 34 35 36 37 38 39 40 41 42 43 44 45 46 47 48 49 50 51 52 53 54 55 56 57 58 59 60 61 62 63 64 65 66 67 68 69 70 71 72 73 74 75 76 77 78 79 80 81 82 83 84 85 86 87 88 89 90 91 92 93 94 95 96 97 98 99 100

10 11 12 13 14 15 16 17 18 19 20 21 22 23 24 25 26 27 28 29 30 31 32 33 34 35 36 37 38 39 40 41 42 43 44 45 46 47 48 49 50 51 52 53 54 55 56 57 58 59 60 61 62 63 64 65 66 67 68 69 70 71 72 73 74 75 76 77 78 79 80 81 82 83 84 85 86 87 88 89 90 91 92 93 94 95 96 97 98 99 100

Doors of Exhibition Building close at Noon, sharp. Exhibits to be staged and Exhibitor ready to leave the building at 1 p.m. [See Rule 8.]

CLASS C. (OPEN.)

FRUITS.

A Committee may be appointed by the Society to assist in naming Fruits about which Exhibitors may be doubtful, but the Society does not assume any responsibility in the matter.

Exhibitors are especially cautioned against exhibiting more than one plate of the same variety in any collection, and each must be named. All apples only locally known should, as far as possible, have a statement of their probable origin written on the card with the name. Crab Apples will not be admitted in collections of Apples.

SEC.	ARTICLES TO BE EXHIBITED.	1st Prize.	2nd Prize.	3rd Prize.	4th Prize.	5th Prize.
90.	Collection of Apples, not to exceed 25 varieties, must be exhibited by grower; 5 specimens of each variety	\$15 00	\$10 00	\$5 00		
91.	Apples, collection of 15 varieties, 5 specimens of each, grown in the Province of Quebec	15 00	10 00	5 00		
92.	Apples, collection of Newer Russians, 6 varieties.	4 00	3 00	2 00		
93.	Apples, 1 variety New Seedling, (never exhibited before in Montreal), 5 specimens . .	3 00	2 00	1 00		
94.	Apples, 12 varieties, 3 Summer, 3 Fall, 3 Early Winter, 3 Late Winter, 5 of each named	8 00	6 00	4 00	2 00	
95.	Apples, 6 varieties, 5 of each, named, for commercial purposes	5 00	4 00	3 00	2 00	
96.	Apples, Fameuse 5 specimens	4 00	3 00	2 00	1 00	
97.	" St. Lawrence. "	4 00	3 00	2 00	1 00	
98.	" Duchess. "	4 00	3 00	2 00	1 00	
99.	" Wealthy. "	4 00	3 00	2 00	1 00	
100.	" Winter St. Lawrence, as described in M. H. S. Report "	3 00	2 00	1 00		
101.	" Alexander "	2 00	1 50	1 00		
102.	" Bethel. "	2 00	1 50	1 00		
103.	" Bourassa. "	2 00	1 50	1 00		
104.	" Blue Pearmain "	2 00	1 50	1 00		
105.	" Canada Baldwin "	2 00	1 50	1 00		
106.	" Golden Russet "	2 00	1 50	1 00		
107.	" Peach, Montreal "	2 00	1 50	1 00		
108.	" Pewaukee "	2 00	1 50	1 00		
109.	" Pomme Grise "	2 00	1 50	1 00		
110.	" Roxbury Russet "	2 00	1 50	1 00		
111.	" Strawberry Montreal. "	2 00	1 50	1 00		
112.	" Yellow Transparent "	2 00	1 50	1 00		
113.	" McIntosh Red "	2 00	1 50	1 00		
114.	" Red Astrachan "	2 00	1 50	1 00		
115.	" Switzer "	2 00	1 50	1 00		
116.	Crab Apples, 5 varieties, 10 of each, named	1 50	1 00			
117.	" " 1 variety, 10 specimens . . .	1 50	1 00			

**No entries will be received later than 14th August 1897.
(See Rule 6.)**

Doors of Exhibition Building close at Noon, sharp. Exhibits to be staged and Exhibitors ready to leave the building at 1 p.m. [See Rule 8.]

SEC.	ARTICLES TO BE EXHIBITED.	1st Prize.	2nd Prize.	3rd Prize.	4th Prize.	5th Prize.
FRUITS—Continued.						
118.	Pears, 6 varieties, 5 of each named	\$5 00	\$4 00	\$3 00		
119.	" 3 " 5 " "	3 00	2 00	1 00		
120.	" Flemish Beauty, 5 specimens	2 00	1 50	1 00		
121.	" Any other variety, 5 "	2 00	1 50	1 00		
122.	Plums, 6 varieties, 10 specimens of each. .	4 00	3 00	2 00	1 00	
123.	" 3 " 10 " "	2 00	1 50	1 00		
124.	" Plate of 1 variety only, 10 specimens	2 00	1 50	1 00		
125.	" Wild, of P. Q., 10 specimens. . . .	2 50	1 50	1 00		
126.	" " of North Western States, 10 specimens	1 50	1 00			

BASKETS OF FRUIT.

127.	For the best and most tastefully arranged Basket of Fruit for dessert, size of Basket not to be less than one foot, and not to exceed two feet in any part.	5 00	4 00	3 00	2 00	
128.	For the best and most tastefully arranged Basket of Out-door Grown Fruits, size of Basket to be not less than one foot and not to exceed two feet in any part	4 00	3 00	2 00	1 00	

OUT-DOOR GRAPES.

Grapes to be exhibited with a portion of the cane attached to each bunch, and also when practicable one or more leaves.

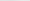
129.	Grapes, 8 varieties, collection, named, two bunches of each	3 00	6 00	5 00	4 00	2 00
130.	Grapes, 4 varieties, collection, named, two bunches of each	5 00	4 00	2 00	1 00	
131.	Grapes, 2 varieties, White, one bunch of each	3 00	2 00	1 00		
132.	Grapes, 2 varieties, Black, one bunch of each	3 00	2 00	1 00		
133.	Grapes, 2 varieties, Red, one bunch of each	3 00	2 00	1 00		
134.	Grapes, heaviest single bunch, any variety .	1 50	1 00			
135.	" " " Black	1 50	1 00			
136.	" " " Red	1 50	1 00			
137.	" " " White	1 50	1 00			

**No entries will be received later than 14th August 1897.
(See Rule 6.)**

Doors of Exhibition Building close at Noon, sharp. Exhibits to be staged and exhibitors ready to leave the Building at 1 p.m. [See Rule 8.]

GRAPES GROWN UNDER GLASS.

Must be correctly named and fully ripened.

 The varieties known as the White Nice and Assyrian are excluded from all competition.

SEC.	ARTICLES TO BE EXHIBITED.	1st Prize.	2nd Prize.	3rd Prize.	4th Prize.
138.	Grapes, 6 varieties, 1 bunch of each. . . .	\$10 00	\$7 00	\$5 00	\$3 00
139.	" 4 " " " "	6 00	4 00	3 00	
140.	" 2 " White.	3 00	2 00	1 00	
141.	" 2 bunches Black Hamburg.	3 00	2 00	1 00	
142.	" Best bunch any variety.	3 00	2 00	1 00	

NECTARINES AND OTHER FRUITS.

143.	Nectarines, 3 varieties, 5 of each	2 00	1 00	
144.	Peaches, 6 varieties, 3 of each	5 00	3 00	2 00
145.	" best plate of	3 00	2 00	1 00
146.	Melon, Water.	2 00	1 50	1 00
147.	" Musk	5 00	4 00	3 00
		4th 2 00	5th 1 00	
148.	" best new variety, Musk	3 00	2 00	1 00
149.	Blackberries, plate of	2 00	1 50	1 00

CLASS D. (OPEN.)

VEGETABLES.

150.	Artichokes, Jerusalem, best plate	1 00	75		
151.	Beets, Turnip, Blood, 6, for table.	2 00	1 50	1 00	
152.	" Long, " 6, " 	2 00	1 50	1 00	
153.	Beans, Lima, best plate.	2 00	1 50	1 00	
154.	" Kidney, yellow podded, best plate	2 00	1 50	1 00	
155.	" " green " " 	2 00	1 50	1 00	
156.	Borecole, (Kale), 2 stalks	1 50	1 00		
157.	Brussels Sprouts 2 "	1 50	1 00		
158.	Cabbage, Winter, 2 heads	1 50	1 00		
159.	" Red, 2 "	1 50	1 00		
160.	" Savoy, 2 "	1 50	1 00		
161.	Carrots, half long, bunch of six	2 00	1 50	1 00	
162.	Cauliflower, 3 heads	4 00	3 00	2 00	1 00
163.	" best head	2 00	1 50	1 00	50

**No entries will be received later than 14th August 1897.
(See Rule 6.)**

Doors of Exhibition Building close at Noon, sharp. Exhibits to be staged and Exhibitors ready to leave the building at 1 p.m. [See Rule 8.]

SEC.	ARTICLES TO BE EXHIBITED.	1st Prize.	2nd Prize.	3rd Prize.	4th Prize.
VEGETABLES—Continued.					
164.	Cucumber, best 2	\$1 00	50		
165.	Celery, white, 6 heads	3 00	2 00	1 50	1 00
166.	" red, 6 heads	3 00	2 00	1 50	1 00
167.	" yellow, 6 heads	3 00	2 00	1 50	1 00
168.	Corn, sweet, 6 ears, 1 var., fit for table use, named	3 00	2 00	1 00	
169.	Corn, sweet, collection, 6 var., 3 of each, named	3 00	2 00	1 00	
170.	Egg Plants, 3, purple	1 50	1 00		
171.	" 3, white	1 50	1 00		
172.	Leeks, bunch of 6	2 00	1 50	1 00	
173.	Mushrooms, box of growing	2 00	1 50	1 00	
174.	Onions, 6 varieties, 5 of each	3 00	2 00	1 00	
175.	" red, 1 var. 20 specimens	5 00	3 00	2 00	1 00
176.	" yellow, 1 " 20 "	5 00	3 00	2 00	1 00
177.	" white, 1 " 20 "	5 00	3 00	2 00	1 00
178.	Parsnips, 6, for table	2 00	1 50	1 00	1 00
179.	Peas, 1 plate, named	2 50	2 00	1 50	1 00
180.	Peppers, collection, 6 var., 6 of each	3 00	2 00	1 00	
181.	Potatoes, collection, 6 of each, 6 var.	5 00	4 00	3 00	2 00
182.	" 3 varieties, 6 of each	2 00	1 50	1 00	
183.	Pot Herbs, collection, 1 bunch of each.	3 00	2 00	1 00	
184.	Radishes, bunch of 6, Winter	2 00	1 50	1 00	
185.	" Summer, bunch of 12	2 00	1 50	1 00	
186.	Horse Radishes, 6 stalks	2 00	1 50	1 00	
187.	Lettuce, 6 heads Cabbage	2 00	1 50	1 00	
188.	" 6 heads Curly	2 50	1 50	1 00	
189.	Parsley, growing in pot	1 50	1 00		
190.	Salsify, 12 roots	2 00	1 50	1 00	
191.	Tomatoes, 3 var., 6 specimens of each.	3 00	2 00	1 00	
192.	" red, 5 specimens, 1 var	1 50	1 00		
193.	" yellow, 5 specimens, 1 var.	1 50	1 00		
194.	Turnips, white, 6 for table.	2 00	1 50	1 00	
195.	" yellow, 6 "	1 00	1 50	1 00	
196.	Vegetable Marrow, 2 specimens	1 50	1 00		
197.	Squash, Hubbard, 2 specimens.	1 50	1 00		
198.	" Best Table, any other variety, 2 specimens.	1 50	1 00		
199.	Vegetables, best collection, named, displayed on a space of not less than 36 feet area	10 00	8 00	6 00	4 00

**No entries will be received later than 14th August 1897.
(See Rule 6.)**

All prizes awarded must be claimed not later than 30th October, 1897,
otherwise they will be forfeited.

CLASS E.

OPEN TO AMATEURS ONLY.

PLANTS.

Rules for Flowers and Plants.

Competitors for the following Prizes must be actual growers, as well as owners, of the flowers shown in competition, and must not be growers of flowers for selling purposes. In the event of any dispute as to the interpretation of the rule, the matter is to be referred to the Board of Directors, whose decision shall be final.

SEC.	ARTICLES TO BE EXHIBITED.	1st Prize.	2nd Prize.	3rd Prize.	4th Prize.
200.	6 Plants, distinct varieties, in Bloom . . .	\$4 00	\$3 00	\$2 00	
201.	3 " " " " " " . . .	3 00	2 00	1 00	
202.	Specimen plant, in bloom	2 00	1 50	1 00	
203.	One Pot Mignonette	2 00	1 50	1 00	
204.	" Musk	2 00	1 50	1 00	
205.	" Abutilon	2 00	1 50	1 00	
206.	" Hydrangea	2 00	1 50	1 00	
207.	" Balsam	2 00	1 50	1 00	
208.	" Aster	2 00	1 50	1 00	
209.	" Begonia Rex	2 00	1 50	1 00	
210.	" Heliotrope	2 00	1 50	1 00	
211.	" Petunia, Double	2 00	1 50	1 00	
212.	" Petunia, Single	2 00	1 50	1 00	
213.	" Cockscomb	2 00	1 50	1 00	
214.	" Oleander	2 00	1 50	1 00	
215.	" French Canna	2 00	1 50	1 00	
216.	" Stock	2 00	1 50	1 00	
217.	" Fuchsia	2 00	1 50	1 00	
218.	" Geranium	2 00	1 50	1 00	
219.	" Tuberous Begonia, Single	2 00	1 50	1 00	
220.	" Tuberous Begonia, Double.	2 00	1 50	1 00	
221.	6 Foliage Plants, distinct varieties.	4 00	3 00	2 00	
222.	3 " " " " " "	4 00	2 00	1 00	
223.	Specimen Foliage Plant	2 00	1 50	1 00	
224.	One Pot Coleus	2 00	1 50	1 00	
225.	" Fern	2 00	1 50	1 00	
226.	" Ivy	2 00	1 50	1 00	
227.	" Palm	2 00	1 50	1 00	
228.	" Rubber Plant	2 00	1 50	1 00	
229.	Window Box with growing plants	5 00	4 00	3 00	2 00
230.	Rustic Stand of Plants	5th 1 00 3 00	2 00	1 00	

No entries will be received later than 14th August 1897.
(See Rule 6.)

Doors of Exhibition Building close at Noon, sharp. Exhibits to be staged and Exhibitors ready to leave the building at 1 p.m.. [See Rule 8.]

CUT BLOOM, BOUQUETS. &c.

Competitors for the following prizes, inclusive of the bouquet, basket and vase or epergne must be *bona fide* growers of the flowers, otherwise the exhibits will be disqualified.

Either Vials or Vases may be employed in staging exhibits and exhibitors may use decorative foliage.

Prizes winners will be obliged as far as possible to renew their flowers every second day. All Cut Bloom to be exhibited with long stems as far as possible.

Sec.	ARTICLES TO BE EXHIBITED.	1st Prize.	2nd Prize.	3rd Prize.	4th Prize.
*231.	Collection of Annuals <i>only</i> , 18 varieties. .	\$4 00	\$3 00	\$2 00	\$1 00
*232.	Col. of Perennials & Biennials <i>only</i> , 18 var.	4 00	3 00	2 00	1 00
233.	Asters, collection of 18 blooms.	2 00	1 50	1 00	
234.	Dahlias, double, 6 blooms, distinct varieties.	2 00	1 50	1 00	
235.	Dahlias, single, 6 blooms, distinct varieties.	2 00	1 50	1 00	
236.	Gladioli, 6 spikes, distinct varieties	3 00	2 00	1 00	
237.	Pansies, 18 blooms, distinct varieties	2 50	2 00	1 00	
238.	" 9 " " "	2 00	1 50	1 00	
239.	Dianthus, 12 " " "	2 00	1 50	1 00	
240.	Stocks, 6 spikes, " "	2 00	1 50	1 00	
241.	Verbenas, 12 blooms, " "	2 00	1 50	1 00	
242.	Hanging Basket	2 00	1 50	1 00	
243.	Petunias, double, 6 blooms, distinct varieties	2 00	1 50	1 00	
244.	Petunias, single, 12 blooms, distinct varieties	2 00	1 50	1 00	
245.	Phlox Drummondi, 12 varieties, 1 bunch of each	2 00	1 50	1 00	
246.	Zinnias, 12 blooms, distinct varieties	2 00	1 50	1 00	
247.	Bouquet, or bunch of flowers.	3 00	2 00	1 00	
248.	Basket of Cut Flowers, (basket not to exceed 12 inches diameter)	3 00	2 00	1 00	
249.	Vase or Epergne of Cut Flowers	3 00	2 00	1 00	
250.	Vase of Sweet Peas	2 00	1 50	1 00	
251.	Vase of Poppies	2 00	1 50	1 00	

*The Judges are specially directed to disqualify all exhibits in these sections which do not comply strictly with the requirements.

No entries will be received later than 14th August 1897.
(See Rule 6.)

Doors of Exhibition Building close at Noon, sharp. Exhibits to be staged and Exhibitors ready to leave the building at 1 p.m. [See Rule 8.]

FRUITS AND VEGETABLES.

Rules for Fruits and Vegetables

Competitors for the following prizes must be small growers, exclusively for their own household use, and be engaged in other occupation for their living. Farmers who have regular orchards, persons engaged in fruit growing for commercial purposes, market gardeners, etc., are excluded from competing. In the event of any dispute as to the interpretation of this rule, the matter is to be referred to the Board of Directors, whose decision on all points shall be final.

SEC.	ARTICLES TO BE EXHIBITED.	1st Prize.	2nd Prize.	3rd Prize.
252.	Apples, 3 varieties, dessert, 5 of each	\$3 00	\$2 00	\$1 00
253.	" best plate, 1 variety, 5 specimens.	2 00	1 50	1 00
254.	Grapes, out-door, 5 varieties, 1 bunch of each . .	3 00	2 00	1 00
255.	" " bunch any variety	2 00	1 50	1 00
	<i>Grapes to be exhibited with a portion of the cane attached to each bunch, and also, when practicable, one or more leaves.</i>			
256.	Melon, Musk, green or red fleshed	3 00	2 00	1 00
257.	Pears, plate of 5 specimens, 1 variety	3 00	2 00	1 00
258.	Plums, plate of 6 specimens, 1 variety	3 00	2 00	1 00
259.	Blackberries, plate	2 50	1 50	1 00
260.	Corn, sweet, 6 ears, 1 variety	1 50	1 00	
261.	Potatoes, plate of 6 specimens, 1 variety	1 50	1 00	
262.	Tomatoes, plate of 6 specimens named, 1 variety .	1 50	1 00	
263.	Onions, 3 varieties, 5 of each	2 00	1 50	1 00
264.	Carrots, bunch of 6	1 50	1 00	
265.	Beets, bunch of 6	1 50	1 00	
266.	Celery, 3 heads	1 50	1 00	
267.	Parsnips, bunch of 6	1 50	1 00	
268.	Lettuce, 3 cabbage	1 50	1 00	
269.	Lettuce, 3 curly	1 50	1 00	
270.	Beans, plate	1 50	1 00	
271.	Salsify, bunch of 6	1 50	1 00	
272.	Cauliflower, specimen	2 00	1 50	1 00
273.	Peas, green, 25 pods	1 50	1 00	

No entries will be received later than 14th August 1897.
(See Rule 6.)

SPECIAL PRIZES

HORSE DEPARTMENT.

Class 9.—Section 2.

GOLD MEDAL. Presented by THE CANADIAN PRODUCE COMPANY of Montreal, for the best Percheron Stallion, 3 years old, registered in the Percheron Stud Book of Canada.

Class 14.—Sections 14 and 15.

TWO SILVER MEDALS, presented by the **Hackney Horse Society**, of London, England.

SEC.

14. R. (1.) For the best Hackney Mare or Filly, by an imported sire and out of an imported dam, both registered in the English Hackney Stud Book.
15. D. (1.) For the best Hackney Stallion or Entire Colt, by an imported sire and out of an imported dam, both registered in the English Hackney Stud Book.

Class 18.—Section 2.

SILVER CUP presented by the CANADIAN PRODUCE COMPANY, of Montreal, for the best jumper.

CONDITIONS.—High jump limited to 6 feet, minimum weight 145 lbs. Trial to begin at 4 feet. In case of a tie, Judges will consider the form in which the horses have taken their jumps.

Class 19.—Section 1.

FIFTEEN DOLLARS.—Presented by ROBERT WISEMAN, Esq., Mile End Hotel, for Fast Walking Horse, attached to Cart or dray.



CATTLE DEPARTMENT

Class 22.—Section 2.

PRESENTED BY

THE DOMINION SHORT HORN BREEDER'S ASSOCIATION.

Young Herd, consisting of one bull and four heifers, under two years of age, owned by exhibitor and to be recorded in the Dominion Short Horn Herd Book, Toronto, Ont \$15 \$10

Class 36.—Section 12.—Gold Medal

PRESENTED BY

THE AYRSHIRE IMPORTERS' AND BREEDERS' ASSOCIATION OF CANADA.

For the best four animals, the progeny of one Sire, bred and owned by exhibitor, the sire not necessarily to be the property of exhibitor.

Class 37 —Section 1.—One Hundred Dollars

PRESENTED BY

W. W. OGILVIE, ESQ., MONTREAL.

First prize for EXHIBITOR'S HERD of Ayrshire Cattle.

Class 51.—Section 5.—Gold Medal

PRESENTED BY

H. LAPORTE, ESQ., MONTREAL.

First prize for Canadian cow four years old and over.

SHEEP DEPARTMENT

Special Prizes for Oxford Down Sheep

8. Best yearling ram	\$10	\$5
9. Best yearling ewe	10	5
10. Best Pen of four lambs of either sex	12	8

These prizes are given by the American Oxford Down Sheep Record Association. All sheep competing for these prizes to be bred and owned by exhibitors in the Province of Quebec, and to be registered in the American Oxford Down Record, with A.O.D.R.A. ear tag inserted in the ear and certificate of registry, under seal of Association presented at time of exhibition, where there is but one exhibitor only one prize will be paid.

SWINE DEPARTMENT.

Class 18.—Section 11,—Twenty Dollars

PRESENTED BY

JOSEPH FEATHERSTON, M. P., STREETSVILLE, ONT.

For the best IMPROVED YORSHIRE BOAR, any age, imported from England since Exhibition of 1896, and providing he takes First Prize in his section.

POULTRY DEPARTMENT

Class 83.—Ten Dollars.

PRESENTED BY

J. J. GAREAU, Esq., ST. ROCH L'ACHIGAN

For the best collection of hens eggs, of different varieties. Collection to consist of 12 eggs of each variety

1st.	2nd.	3rd.
\$5	\$3	\$2

LIVE STOCK

A Handsome Silver Cup

PRESENTED BY

MESSRS. BRUNEAU, CURRIE & CO., PRODUCE MERCHANTS, MONTREAL

For the exhibitor of the Province of Quebec, who wins the greatest number of prizes in the LIVE STOCK Department, exclusive of Poultry. The competition will be decided by points which will take in all the classes, inclusive of sweepstakes, in which a prize is awarded.



Messenger Pigeons

GRAND RACE FROM KINGSTON TO MONTREAL

DISTANCE 175 MILES

FOR OLD BIRDS.

Entrance 25 Cents

\$20.00 IN PRIZES.

1. Prize with Diploma	\$8 00
2. Prize with Diploma	6 00
3. Prize with Diploma	4 00
4. Prize with Diploma	2 00
5. Diploma	
6. Diploma	
7. Diploma	
8. Diploma	
9. Diploma	
10. Diploma	

GRAND RACE FROM BROCKVILLE TO MONTREAL

DISTANCE 125 MILES

FOR YOUNG BIRDS HATCHED IN 1857.

Entrance 25 cents

\$30.00 IN PRIZES.

1. Prize with Diploma	\$10 00
2. Prize with Diploma	8 00
3. Prize with Diploma	6 00
4. Prize with Diploma	4 00
5. Prize with Diploma	2 00
6. Diploma	
7. Diploma	
8. Diploma	
9. Diploma	
10. Diploma	

The races will be open to amateurs of the City of Montreal and its immediate neighbourhood.

The laws of the Montreal Homing Pigeon Association shall govern the races.

The entries shall be made with the Secretary of the Montreal Homing Pigeon Association before 17th August 1897.

The races will take place on Tuesday, August 24th.

Owners of competing birds must deliver them to the appointed judge at the Poultry Building on the grounds of the Montreal Exhibition Company at 4 p.m. on the 23rd August, 1897.

For further particulars, apply to

MR. P. BRAEM, *Secretary*,
Montreal Homing Pigeon Association,
38 Delorimier Avenue,
Montreal.

BISHOP



169 ST. JAMES ST.
...MONTREAL

ENGRAVER.

LITHOGRAPHER

PLATE-PRINTER



BOOK AND JOB PRINTER

BOOK BINDER.

STATIONER.



List of Principal Fairs to be Held in Canada, 1897.

ASSOCIATION.	PLACE OF FAIR.	DATE.	SECRETARY	ADDRESS.
Montreal Provincial Exhibition.	Montreal	Aug. 19th to 28th	S. C. Stevenson	Montreal, Que.
Winnipeg Exhibition	Winnipeg.	July 19th to 24th.	F. W. Heubach	Winnipeg, Man.
Stanstead Fair	Stanstead,	Aug. 18th and 19th.	E. P. Ball.	Ro' Island, Que.
Victorian Era Exposition and Industrial Fair	Toronto.	Aug. 30th to Sep. 11th.	H. J. Hill.	Toronto, Ont.
Eastern Exhibition Association	Sherbrooke,	Aug. 30th to Sept. 4th.	H. R. Frazer	Sherbrooke, Que.
Dundas Co. Agricultural Society	Morrisburg	Sept. 7th to 9th.	Geo. F. Bradfield.	Morrisburg, Ont.
Western Fair	London.	Sept. 9th to 18th.	Thos. A. Browne.	London, Ont.
North Grey Agricultural Society	Owen Sound.	Sept. 14th to 16th.	A. G. McKay	Owen Sound, Ont.
Central Fair	Guelph	Sept. 15th and 16th.	Wm. Laidlaw	Guelph, Ont.
Bay of Quinte District Fair.	Belleville	Sept. 14th to 17th.	J. M. Hurley	Belleville, Ont.
South Lanark Fair	Perth.	Sept. 8th to 10th.	J. G. Campbell.	Perth, Ont.
South Renfrew Exhibition	Renfrew	Sept. 16th and 17th.	Robert McLaren	Renfrew, Ont.
West Durham & Darlington Agricultural Society.	Bowmanville.	Sept. 16th and 17th.	R. Windatt	Bowmanville, Ont.
Central Canada Exhibition	Ottawa	Sept. 17th to 25th	E. McMahon	Ottawa, Ont.
Central Exhibition	Peterborough	Sept. 21st to 23rd.	W. J. Green.	Peterborough, Ont.
South Grenville Fair	Prescott.	Sept. 21st to 23rd.	T. R. Melville.	Prescott, Ont.
Great North Western Exhibition	Goderich	Sept. 21st to 23rd.	Jas. Mitchell.	Goderich, Ont.
G. N. E. Collingwood Fair	Collingwood.	Sept. 21st to 23rd.	J. W. Archer	Collingwood, Ont.
Ontario and Durham Exhibition.	Whitby	Sept. 27th to 30th.	Joseph White	Whitby, Ont.
North Lanark Fair	Almonte	Sept. 28th to 30th	W. P. McEwen	Almonte, Ont.
East Riding of York Agricultural Society.	Markham	Oct. 6th to 8th.	W. H. Hall.	Markham, Ont.
North Perth Agricultural Society	Stratford	Sept. 23rd and 24th.	John Brown	Stratford, Ont.
North Brant Agricultural Exhibition.	Paris.	Oct. 6th and 6th.	H. C. O'Neal	Paris, Ont.
Three Rivers Fair	Three Rivers	Sept. 2nd to 11th.	I. A. Frigon.	Three Rivers, Que.
Live Stock Association	Cookshire.	Sept. 7th and 18th.	R. E. Shicknesse	Cookshire.
Halifax Exhibition	Halifax	Sept. 28th to 5th Oct.	Secretary	Halifax, N. S.

List of Important Fairs to be Held in the United States, 1897.

ASSOCIATION.	PLACE OF FAIR.	DATES.	SECRETARY.	ADDRESS.
Central Ohio Tri-County Fair.	Westerville, Ohio.	Aug. 16th to 20th.	Burr Lonnabary	Westerville, Ohio.
Rhode Island State Fair.	Providence, R. I.	Sept. 6th to 10th.	W. W. Dexter	Providence, R. I.
Dowagiac Union Fair.	Dowagiac, Mich.	Sept. 28th to Oct. 1st	Samuel Johnson	Dowagiac, Mich.
Great Inter-State Fair.	Trenton, N. J.	Sept. 27th to Oct. 1st	Jas. G. Muirheid	Trenton, N. J.
Hillsdale Fair.	Hillsdale, Mich.	Sept. 27th to Oct. 1st	C. W. Terwilliger	Hillsdale, Mich.
Hadley District Agricultural Society.	Hadley, Mich.	Sept. 28th to 30th.	F. A. Smith	Hadley, Mich.
Frederick Fair.	Frederick, Md.	Oct. 19th to 22nd.	Harry C. Heefer	Frederick, Md.
South-Eastern Dis. Agricultural Society	Cape Girardeau, Mo.	Oct. 12th to 16th.	E. H. Engelmann	Cape Girardeau, Mo.
St. Louis Fair Association.	St. Louis, Mo.	Oct. 4th to 9th.	Rt. Aull	St. Louis, Mo.

PRIZE LIST



INDEX

	PAGE
Agricultural Implements.	58
Agricultural Products	55
Carriage Department	60
Cattle.	23
Children's Department.	68
Committees	3
Dairy Products and Utensils	52
Domestic Manufactures	66
General Arrangements	5
Honey and Apiary Supplies	57
Horses	13
Horticultural Department	70
Introduction.	4
List of Officers	2
Miscellaneous.	59
Natural History	58
Officers	2
Poultry	40
Rules and Regulations	5
Sheep	32
Stove Department	60
Swine.	36
Special Prizes	85
Textile Fabrics	60
Woman's Work	61

Turkish Bath Hotel..

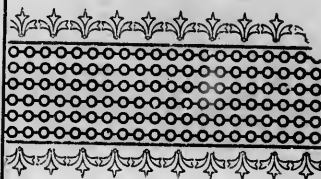
One block from
Windsor Hotel



... 140 to 144 ...

ST. MONIQUE STREET

Comfort, Civility, Cleanliness



... Every modern convenience of an up to date Hotel,
including Electric Bells in every room, Electric Elevator,
Handsome Dining Room and Parlors, etc.

... Magnificent Marble Trimming Bath, and
Hot and Cold Showers in Bathing Department
FREE TO GUESTS.



**TURKISH BATH DEPARTMENT
OPEN ALL NIGHT.**

Estate J. R. ALEXANDER, M.D. Proprietor.

Rates \$1.75 to \$2.50 per day.

A. S. NEWMAN,
Assistant Manager.



VIN MARIANI

(MARIANI WINE)



THE IDEAL TONIC...

FOR BODY, BRAIN,
AND NERVES.

Recommended by the Medical Profession in all cases of nervous exhaustion or overwork; endorsed by the Clergy, the Stage and the Press.

"I can certainly add my testimony to the virtues of Vin Mariani, which I have found excellent, and am well convinced of its quality."

(SIR) HENRY IRVING

Lawrence A. Wilson & Co.,

SOLE AGENTS
FOR CANADA.

MONTREAL.

CAVERHILL, LEARMONT & CO.,

Office and Sample Room :

Metal Warehouse :

ST. PETER ST. COLBORNE ST.

MONTREAL.

Metals,

Fire Arms,

Glass,

Cuttlery,

Hardware,

Bicycles,

Etc.

Etc.

ERRATA



Page 16—Class 5—Section 5—3rd prize should be \$7.00.

Page 17—Class 8—Section 7—2nd prize should be \$7.00.

Page 18—Class 10—Section 2—2nd prize should be \$10.00.

Page 19—Class 12—Section 1—2nd prize should be \$12.00.

Page 33—Leicesters—Number of class should be 58 A.

