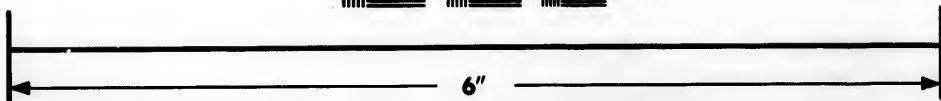
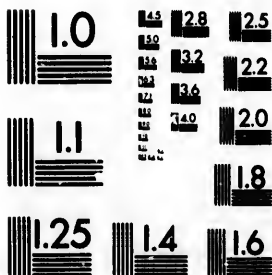


**IMAGE EVALUATION  
TEST TARGET (MT-3)**



**Photographic  
Sciences  
Corporation**

23 WEST MAIN STREET  
WEBSTER, N.Y. 14580  
(716) 872-4503

18  
20  
22  
25

**CIHM/ICMH  
Microfiche  
Series.**

**CIHM/ICMH  
Collection de  
microfiches.**



**Canadian Institute for Historical Microreproductions / Institut canadien de microreproductions historiques**

10  
11

**© 1984**

Technical and Bibliographic Notes/Notes techniques et bibliographiques

The Institute has attempted to obtain the best original copy available for filming. Features of this copy which may be bibliographically unique, which may alter any of the images in the reproduction, or which may significantly change the usual method of filming, are checked below.

L'Institut a microfilmé le meilleur exemplaire qu'il lui a été possible de se procurer. Les détails de cet exemplaire qui sont peut-être uniques du point de vue bibliographique, qui peuvent modifier une image reproduite, ou qui peuvent exiger une modification dans la méthode normale de filmage sont indiqués ci-dessous.

- Coloured covers/  
Couverture de couleur
- Covers damaged/  
Couverture endommagée
- Covers restored and/or laminated/  
Couverture restaurée et/ou pelliculée
- Cover title missing/  
Le titre de couverture manque
- Coloured maps/  
Cartes géographiques en couleur
- Coloured ink (i.e. other than blue or black)/  
Encre de couleur (i.e. autre que bleue ou noire)
- Coloured plates and/or illustrations/  
Planches et/ou illustrations en couleur
- Bound with other material/  
Relié avec d'autres documents
- Tight binding may cause shadows or distortion  
along interior margin/  
La reliure serrée peut causer de l'ombre ou de la  
distortion le long de la marge intérieure
- Blank leaves added during restoration may  
appear within the text. Whenever possible, these  
have been omitted from filming/  
Il se peut que certaines pages blanches ajoutées  
lors d'une restauration apparaissent dans le texte,  
mais, lorsque cela était possible, ces pages n'ont  
pas été filmées.
- Additional comments:/  
Commentaires supplémentaires:

- Coloured pages/  
Pages de couleur
- Pages damaged/  
Pages endommagées
- Pages restored and/or laminated/  
Pages restaurées et/ou pelliculées
- Pages discoloured, stained or foxed/  
Pages décolorées, tachetées ou piquées
- Pages detached/  
Pages détachées
- Showthrough/  
Transparence
- Quality of print varies/  
Qualité inégale de l'impression
- Includes supplementary material/  
Comprend du matériel supplémentaire
- Only edition available/  
Seule édition disponible
- Pages wholly or partially obscured by errata  
slips, tissues, etc., have been refilmed to  
ensure the best possible image/  
Les pages totalement ou partiellement  
obscurcies par un feuillet d'errata, une pelure,  
etc., ont été filmées à nouveau de façon à  
obtenir la meilleure image possible.

This item is filmed at the reduction ratio checked below/  
Ce document est filmé au taux de réduction indiqué ci-dessous.

10X	14X	18X	22X	26X	30X
<input type="checkbox"/>	<input type="checkbox"/>	<input type="checkbox"/>	<input type="checkbox"/>	<input type="checkbox"/>	<input type="checkbox"/>
12X	16X	20X	24X	28X	32X
<input type="checkbox"/>	<input type="checkbox"/>	<input type="checkbox"/>	<input type="checkbox"/>	<input type="checkbox"/>	<input checked="" type="checkbox"/>

The copy filmed here has been reproduced thanks to the generosity of:

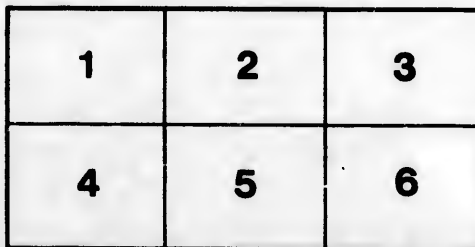
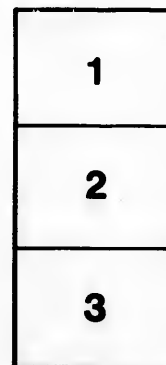
Library of the Public  
Archives of Canada

The images appearing here are the best quality possible considering the condition and legibility of the original copy and in keeping with the filming contract specifications.

Original copies in printed paper covers are filmed beginning with the front cover and ending on the last page with a printed or illustrated impression, or the back cover when appropriate. All other original copies are filmed beginning on the first page with a printed or illustrated impression, and ending on the last page with a printed or illustrated impression.

The last recorded frame on each microfiche shall contain the symbol  $\rightarrow$  (meaning "CONTINUED"), or the symbol  $\nabla$  (meaning "END"), whichever applies.

Maps, plates, charts, etc., may be filmed at different reduction ratios. Those too large to be entirely included in one exposure are filmed beginning in the upper left hand corner, left to right and top to bottom, as many frames as required. The following diagrams illustrate the method:



L'exemplaire filmé fut reproduit grâce à la générosité de:

La bibliothèque des Archives  
publiques du Canada

Les images suivantes ont été reproduites avec le plus grand soin, compte tenu de la condition et de la netteté de l'exemplaire filmé, et en conformité avec les conditions du contrat de filmage.

Les exemplaires originaux dont la couverture en papier est imprimée sont filmés en commençant par le premier plat et en terminant soit par la dernière page qui comporte une empreinte d'impression ou d'illustration, soit par le second plat, selon le cas. Tous les autres exemplaires originaux sont filmés en commençant par la première page qui comporte une empreinte d'impression ou d'illustration et en terminant par la dernière page qui comporte une telle empreinte.

Un des symboles suivants apparaîtra sur la dernière image de chaque microfiche, selon le cas: le symbole  $\rightarrow$  signifie "A SUIVRE", le symbole  $\nabla$  signifie "FIN".

Les cartes, planches, tableaux, etc., peuvent être filmés à des taux de réduction différents. Lorsque le document est trop grand pour être reproduit en un seul cliché, il est filmé à partir de l'angle supérieur gauche, de gauche à droite, et de haut en bas, en prenant le nombre d'images nécessaire. Les diagrammes suivants illustrent la méthode.

aire  
détails  
ues du  
modifier  
ger une  
filmage

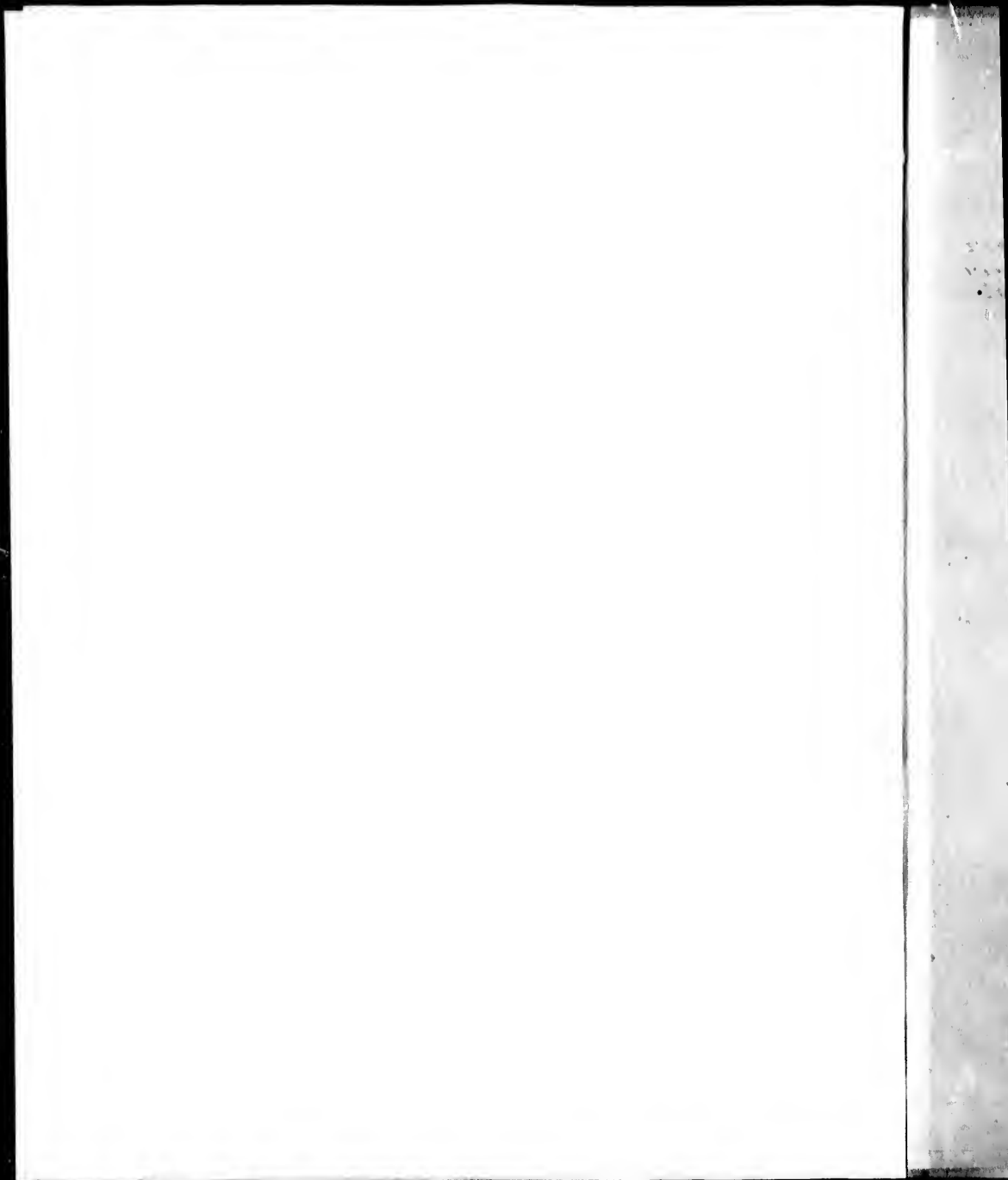
ées

e

y errata  
d to

nt  
ne pelure,  
çon à





ABSTRACT  
OF THE  
**C E N S U S**  
OF  
THE POPULATION,  
AND OTHER  
STATISTICAL RETURNS  
OF  
PRINCE EDWARD ISLAND.  
TAKEN IN THE YEAR  
1861.

ABSTRACT OF THE RETURNS OF THE POPULATION OF P. E. ISLAND, 1861.

ELECTORAL DISTRICTS, &c.	MALES										FEMALES										Total number in each family, including servants and apprentices.	Deaths last year.	Births last year.	Total number in each family, including servants and apprentices.	INDIANS																																																																																																																																																																																																		
	From 5 to 9.					From 10 to 21.					From 21 to 45.					From 45 to 60.									Blind.	Not vaccinated nor had the Small Pox.	Married.	Single.	Widowed.	Males.	Females.																																																																																																																																																																																												
	Under 5 years.	From 5 to 9.	From 10 to 21.	From 21 to 45.	From 45 to 60.	Under 5 years.	From 5 to 9.	From 10 to 21.	From 21 to 45.	From 45 to 60.	Under 5 years.	From 5 to 9.	From 10 to 21.	From 21 to 45.	From 45 to 60.	From 60 to 75.	From 75 to 90.	From 90 to 105.	From 105 to 120.	From 120 to 135.												From 135 to 150.	From 150 to 165.	From 165 to 180.	From 180 to 200.	From 200 to 250.	From 250 to 300.	From 300 to 350.	From 350 to 400.	From 400 to 450.	From 450 to 500.	From 500 to 550.	From 550 to 600.	From 600 to 650.	From 650 to 700.	From 700 to 750.	From 750 to 800.	From 800 to 850.	From 850 to 900.	From 900 to 950.	From 950 to 1000.	From 1000 to 1050.	From 1050 to 1100.	From 1100 to 1150.	From 1150 to 1200.	From 1200 to 1250.	From 1250 to 1300.	From 1300 to 1350.	From 1350 to 1400.	From 1400 to 1450.	From 1450 to 1500.	From 1500 to 1550.	From 1550 to 1600.	From 1600 to 1650.	From 1650 to 1700.	From 1700 to 1750.	From 1750 to 1800.	From 1800 to 1850.	From 1850 to 1900.	From 1900 to 1950.	From 1950 to 2000.	From 2000 to 2050.	From 2050 to 2100.	From 2100 to 2150.	From 2150 to 2200.	From 2200 to 2250.	From 2250 to 2300.	From 2300 to 2350.	From 2350 to 2400.	From 2400 to 2450.	From 2450 to 2500.	From 2500 to 2550.	From 2550 to 2600.	From 2600 to 2650.	From 2650 to 2700.	From 2700 to 2750.	From 2750 to 2800.	From 2800 to 2850.	From 2850 to 2900.	From 2900 to 2950.	From 2950 to 3000.	From 3000 to 3050.	From 3050 to 3100.	From 3100 to 3150.	From 3150 to 3200.	From 3200 to 3250.	From 3250 to 3300.	From 3300 to 3350.	From 3350 to 3400.	From 3400 to 3450.	From 3450 to 3500.	From 3500 to 3550.	From 3550 to 3600.	From 3600 to 3650.	From 3650 to 3700.	From 3700 to 3750.	From 3750 to 3800.	From 3800 to 3850.	From 3850 to 3900.	From 3900 to 3950.	From 3950 to 4000.	From 4000 to 4050.	From 4050 to 4100.	From 4100 to 4150.	From 4150 to 4200.	From 4200 to 4250.	From 4250 to 4300.	From 4300 to 4350.	From 4350 to 4400.	From 4400 to 4450.	From 4450 to 4500.	From 4500 to 4550.	From 4550 to 4600.	From 4600 to 4650.	From 4650 to 4700.	From 4700 to 4750.	From 4750 to 4800.	From 4800 to 4850.	From 4850 to 4900.	From 4900 to 4950.	From 4950 to 5000.	From 5000 to 5050.	From 5050 to 5100.	From 5100 to 5150.	From 5150 to 5200.	From 5200 to 5250.	From 5250 to 5300.	From 5300 to 5350.	From 5350 to 5400.	From 5400 to 5450.	From 5450 to 5500.	From 5500 to 5550.	From 5550 to 5600.	From 5600 to 5650.	From 5650 to 5700.	From 5700 to 5750.	From 5750 to 5800.	From 5800 to 5850.	From 5850 to 5900.	From 5900 to 5950.	From 5950 to 6000.	From 6000 to 6050.	From 6050 to 6100.	From 6100 to 6150.	From 6150 to 6200.	From 6200 to 6250.	From 6250 to 6300.	From 6300 to 6350.	From 6350 to 6400.	From 6400 to 6450.	From 6450 to 6500.	From 6500 to 6550.	From 6550 to 6600.	From 6600 to 6650.	From 6650 to 6700.	From 6700 to 6750.	From 6750 to 6800.	From 6800 to 6850.	From 6850 to 6900.	From 6900 to 6950.	From 6950 to 7000.	From 7000 to 7050.	From 7050 to 7100.	From 7100 to 7150.	From 7150 to 7200.	From 7200 to 7250.	From 7250 to 7300.	From 7300 to 7350.	From 7350 to 7400.	From 7400 to 7450.	From 7450 to 7500.	From 7500 to 7550.	From 7550 to 7600.	From 7600 to 7650.	From 7650 to 7700.	From 7700 to 7750.	From 7750 to 7800.	From 7800 to 7850.	From 7850 to 7900.	From 7900 to 7950.	From 7950 to 8000.	From 8000 to 8050.	From 8050 to 8100.	From 8100 to 8150.	From 8150 to 8200.	From 8200 to 8250.	From 8250 to 8300.	From 8300 to 8350.	From 8350 to 8400.	From 8400 to 8450.	From 8450 to 8500.	From 8500 to 8550.	From 8550 to 8600.	From 8600 to 8650.	From 8650 to 8700.	From 8700 to 8750.	From 8750 to 8800.	From 8800 to 8850.	From 8850 to 8900.	From 8900 to 8950.	From 8950 to 9000.	From 9000 to 9050.	From 9050 to 9100.	From 9100 to 9150.	From 9150 to 9200.	From 9200 to 9250.	From 9250 to 9300.	From 9300 to 9350.	From 9350 to 9400.
Prin <sup>ce</sup> George's County.	532	782	308	789	225	115	470	726	316	759	207	102	1	2	3683	1639	3752	5	31	97	181	5391	14	9	981	Members of the Church of England.																																																																																																																																																																																																	
First District.	325	696	337	751	202	157	324	629	410	807	219	113	1	1	1552	1396	3065	7	61	52	195	5091	14	7	77																																																																																																																																																																																																		
Second District.	338	570	310	679	271	156	396	670	314	675	195	121	3	3	1545	1198	3510	13	62	52	192	4768	15	11	109																																																																																																																																																																																																		
Third District.	315	703	275	615	188	131	324	623	369	641	166	96	4	4	2188	1277	3215	4	37	54	161	4465	15	11	164																																																																																																																																																																																																		
Fourth District.	406	701	243	608	242	126	435	702	325	645	172	48	2	2	2583	1383	3376	5	44	71	157	4759	7	6	139																																																																																																																																																																																																		
G. Town & Royalty.	63	96	66	125	29	30	62	112	68	116	43	18	1	1	228	289	611	9	16	27	831	6	5	138																																																																																																																																																																																																			
Total.	1367	2822	1231	2768	662	603	1451	2736	1329	2890	825	446	7	7	8266	5474	13410	29	213	245	596	19884	29	18	687																																																																																																																																																																																																		
King's County.	452	696	337	751	202	157	324	629	410	807	219	113	1	1	1552	1396	3065	7	61	52	195	5091	14	9	981																																																																																																																																																																																																		
First District.	225	441	171	466	119	50	262	443	205	419	103	36	3	3	1062	828	2216	9	45	45	134	3661	26	67	511																																																																																																																																																																																																		
Second District.	408	713	265	718	205	141	365	560	265	703	169	113	6	6	2166	1368	3580	9	51	54	159	4063	1	8	331																																																																																																																																																																																																		
Third District.	496	843	376	856	246	207	541	862	382	882	214	143	3	3	2846	1867	4468	1	10	11	26	2663	6	5	644																																																																																																																																																																																																		
Fourth District.	170	271	99	242	51	40	199	291	124	310	62	42	1	1	561	569	1408	1	10	11	26	2663	6	5	644																																																																																																																																																																																																		
Total.	1886	3919	1239	3071	876	622	1817	2912	1322	3073	751	449	20	20	11345	6123	15067	24	147	280	713	21220	91	90	2169																																																																																																																																																																																																		
Queen's County.	728	1316	484	1110	334	275	665	1065	570	1101	318	188	9	9	5317	2927	5896	29	74	83	236	8223	29	10	1006																																																																																																																																																																																																		
First District.	657	1322	536	1021	409	360	669	1222	585	1167	320	208	15	15	5381	3316	6312	16	46	100	226	5628	12	10	810																																																																																																																																																																																																		
Second District.	616	1077	533	1071	354	257	561	851	451	1071	285	216	4	4	4941	3146	5564	7	59	71	214	7786	25	25	406																																																																																																																																																																																																		
Third District.	603	1208	514	1147	350	274	650	1142	576	1210	385	201	10	10	5345	3244	6040	16	46	63	187	8201	8	9	267																																																																																																																																																																																																		
Fourth District.	480	906	426	889	310	156	470	968	500	1291	266	128	3	3	1563	2091	4615	32	18	59	143	6716	6	5	1140																																																																																																																																																																																																		
Total.	3084	5859	2511	5302	1597	1222	3013	5188	2740	8510	1613	961	42	42	21221	11221	28227	65	225	413	1069	30419	40	37	3629																																																																																																																																																																																																		
Total P. E. Island.	6537	11,740	4961	11,144	3672	2417	6363	11,136	5197	11,773	3219	1850	68	68	47,350	22,618	57,734	148	688	936	2320	80,552	160	145	6756																																																																																																																																																																																																		

1861  
177  
174  
171

216  
116  
72

ABSTRACT OF THE RETURNS OF THE POPULATION OF P. E. ISLAND, 1861, (continued).

ELECTORAL DISTRICTS, &c.	Presbyterian Church of Lower Provinces.	Kirk of Scotland.	Roman Catholics.	Methodists.	Baptists.	Fible Christians.	Quakers.	Universalists.	Other Denominations.	Religious profession not stated.	NATIVES OF							Total number of Males.	Total number of Females.	Total number of Inhabitants.	Population in 1848.	Population in 1855.	Increase since 1855.	Decrease since 1855.			
											England.	Scotland.	Ireland.	British Provinces.	Prince Edward Island.	Other countries.	Countries not stated.										
First District.	847	33	3816	237	59	3	7	97	104	300	365	4626	14	13	2600	2619	5419	5942	4164	12555							
Second District.	720	24	1129	357	28	15	13	461	78	121	86	5715	21	23	1654	1551	3205	1988	3443	7629							
Third District.	1210	46	2825	104	54	2	22	91	99	99	91	3110	42	55	2457	2203	4600	3660	4071	6399							
Fourth District.	1372	488	1777	1370	615	16	14	7	179	193	523	181	4826	13	114	2851	3025	6039	5202	5863	734	58					
Fifth District.	359	46	764	96	88	—	22	30	94	42	54	960	1763	5	1011	1037	3048	1824	1511	537							
Total.	4506	651	10,414	3199	816	75	20	71	76	622	3,010	1097	717	17,050	95,206	17,357	10,468	21,401	15,017	7,537	3817	168					
First District.	306	32	4151	11	386	5	—	21	12	37	580	157	159	4327	11	28	2562	2537	5699	4840	4716	383					
Second District.	1214	27	3252	30	26	10	6	43	231	265	192	3009	10	104	2439	2295	4734	3853	4085	666							
Third District.	620	597	2472	90	448	112	2	25	7	52	529	246	190	3138	9	31	5320	3175	4465	3236	3523	642					
Fourth District.	1854	526	1017	247	155	541	16	13	16	133	739	216	345	3373	5	58	3391	2351	4772	3345	3927	559					
G. Town & Royalty.	14	181	445	18	19	1	—	10	29	51	30	86	610	5	—	412	419	831	678	708	63						
Total.	4165	1632	11,337	387	1043	620	18	59	45	284	1750	934	962	15,757	43,221	10,124	9807	15,431	15,471	7,342	2554						
First District.	3076	1054	2522	412	219	28	—	35	27	200	1122	736	179	5914	56	26	4266	3907	6233	6430	7955	964					
Second District.	1588	142	2917	345	612	265	1	1222	6	410	645	237	109	6916	31	52	4310	4240	5550	7090	7886	664					
Third District.	897	975	4330	706	341	306	—	49	282	200	799	984	6301	31	77	3985	3845	7830	6650	7236	664	100					
Fourth District.	1176	854	2919	360	291	213	—	48	62	1058	314	169	6491	40	69	4039	4167	5206	7190	7762	684	100					
Ch. Town & Royalty.	331	687	2550	1350	187	112	2	23	46	637	252	734	524	4457	68	54	3223	3453	6706	4717	6513	193					
Total.	6978	7987	14,101	3225	1591	957	3	284	174	1304	3357	2910	1139	30,109	256,278	19,228	19,702	38,526	32,017	36,092	3102	179					
Total P. E. Island.	16,591	10,271	35,522	5804	3450	2061	—	41	113	285	2600	5653	4971	3751	62	846	364	707	40	880	39	977	80,857	62,599	71,496	9606	247

222  
116  
286





ABSTRACT OF THE STATISTICAL RETURNS OF P. E. ISLAND, 1861, (continued).

ELECTORAL DISTRICTS, &c.	Pounds of Butter made last year.	No. of Threshing Machines	Horses.	Neat Cattle.	Sheep.	Hogs.	Churches.	School-houses.	Brewing and Distilling establishments.	Tanneries and Limberies.	Pounds of leather manufactured last year.	Tobacco Manufactories.	Number of persons fishing last year.	Number of barrels of Blackened or Alewives cured last year.	Number of barrels of Herrings or Alewives cured last year.	Number of quintals of Codfish or Flake cured last year.	Number of gallons of Fish Oil made last year.	Number of Boats owned for fishing purposes.	MILLS.					Bricks manufactured last year.	Number of Carriage and Sleighs manufactured last year.		
																			Grain Mills.	Saw Mills.	Carriage Mills.	Fulling and Dressing Mills.	Lime Kilns.			Number made last year.	Brick Kilns.
Prince County.	38,329	21	1281	8840	7019	9721	2	42	2	2	1673	17	339	1563	386	7010	4694	184	1	1	1	23	1	700,000	57		
First District.	35,088	36	750	3066	1715	7380	1	8	1	1	1618	17	317	40	979	405	215	55	8	10	1	23	1	200,000	64		
Second District.	30,207	70	1260	4233	1704	616	3	16	3	1	1631	19	190	530	1834	684	305	67	5	4	4	583	1	300,000	80		
Third District.	94,901	176	2077	6372	11,697	2817	12	25	3	5	12,056	15	5	120	70	70	51	12	10	4	3	2	300	1	300,000	197	
Fourth District.	14,381	22	419	1340	1223	716	7	3	3	3	9250	—	—	—	—	—	—	—	2	1	3	2	1600	—	30,000	31	
Total.	229,896	319	6800	18,951	38,338	10,962	41	77	513	25,225	19	739	2140	5861	888	888	3177	315	41	16	56	4	11	7746	3	990,000	329
King's County.	46,675	43	1617	4495	7440	3846	7	22	1	2	2656	35	315	429	1673	10,735	5601	243	8	2	13	2	130	—	—	19	
First District.	41,682	59	1182	3107	6831	3281	6	20	1	5	4307	7	211	292	1527	1713	681	114	11	2	11	1	2	—	—	32	
Second District.	30,131	23	925	3310	6449	2739	19	—	—	—	800	53	202	161	629	389	36	9	4	19	1	2	341	—	—	1	
Third District.	22,620	31	893	3291	5478	2311	10	20	3	3	3715	5	201	111	888	3559	2253	183	9	2	14	1	6	880	—	—	
Fourth District.	5263	4	97	274	381	188	4	3	4	10	800	2	41	304	1427	78	78	—	—	—	—	—	—	250	—	—	35
Total.	117,013	107	3284	15,701	29,679	12,365	35	54	216	22,371	55	851	1361	3366	7,851	9956	569	40	10	57	213	1531	—	—	—	85	
Queen's County.	67,375	97	3012	6171	10,670	5692	19	22	2	4	7696	9	132	315	953	67	270	63	20	5	19	—	6	1274	—	—	37
First District.	51,672	97	2342	6311	12,652	3782	15	33	1	1	1160	9	216	3650	3150	1700	1187	120	6	10	—	6	1274	—	—	112	
Second District.	11,197	18	2961	6767	12,609	3519	21	34	3	6	7690	4	143	369	2129	105	213	70	13	5	14	1	326	5	401,000	23	
Third District.	66,264	49	1748	5551	12,248	3848	11	52	4	8	7070	1	188	1	803	903	570	93	13	2	24	1	3	5	401,000	23	
Fourth District.	4160	8	418	691	708	435	8	17	1	1	71,388	3	1	1	1	1	1	1	1	1	1	1	1	1	401,000	23	
Total.	337,663	177	851	35,391	65,245	23,235	89	111	1021	94,901	315	674	372	10,243	3751	2480	332	60	20	69	324	13,541	6	401,000	684		
Queen's County.	711,858	886	18,765	60,012	107,345	51,635	150	302	2053	143,863	315	59	331	5103	22,416	36,776	17,609	259	141	146	948	22,221	9	91,233	6000	1151	
Total P. E. Island.	770	11,500	52,150	98,019	32,297	127,262	1730	237	—	—	—	—	—	—	—	—	—	—	—	—	—	—	—	—	—	—	
Increase.	—	—	—	—	—	—	—	—	—	—	—	—	—	—	—	—	—	—	—	—	—	—	—	—	—	—	—
Decrease.	—	—	—	—	—	—	—	—	—	—	—	—	—	—	—	—	—	—	—	—	—	—	—	—	—	—	—

In the column where "increase" and "decrease" both appear blank, no return were made and above heads in the column of former years.



First Electoral District of Prince County, (continued.)

NUMBER OF TOWNSHIP.	MEMBERS OF THE CHURCH OF ENGLAND.										Members of the Church of Lower Provinces.	Kirk of Scotland.	Roman Catholics.	Methodists.	Baptists.	Bible Christians.	Quakers.	Universals.	Other Denominations.	Religious profession not stated.	NATIVES OF						Total number of Males.	Total number of Females.	Total number of Inhabitants.	Population in 1845.	Population in 1855.	Increase since 1855.
	England.	Scotland.	Ireland.	British Provinces.	Prince Edward Island.	Other countries.	Country not stated.																									
No. 1.	281	547	28	38,105	217	27	33	3	1	1	17	6	9	2	284	108	106	596	5819	5419	29,763	41,664	11,885									
No. 2.	46	33	11	184	12	41	10	10	1	19	3	16	18	584	345	300	490	367	297	2801	2801	172	163	109								
No. 3.	323	356	—	317	31	10	10	3	3	22	16	58	49	614	434	372	523	372	306	689	689	417	601	184								
No. 4.	10	14	—	217	31	10	10	10	10	5	12	20	29	49	614	372	372	306	490	367	297	417	601	184								
No. 5.	66	66	—	186	19	10	2	2	2	16	58	49	712	738	738	416	416	986	5819	5819	3081	3081	693	526								
No. 6.	43	57	47	713	41	9	9	9	1	4	40	45	27	738	416	416	986	5819	5819	3081	3081	693	526									
Total.	281	547	28	38,105	217	27	33	3	1	1	17	6	9	2	284	108	106	596	5819	5419	29,763	41,664	11,885									

**FIRST ELECTORAL DISTRICT OF PRINCE COUNTY. (continued).**

NUMBER OF TOWNSHIP	No. of persons holding Land of			No. OF ACRES HELD.				CROPS RAISED IN 1860										Pounds of Cheese made last year.	
	First quality.	Second quality.	Third quality.	In fee simple.	Under Lease or agreement for Lease.	By verbal agreement	Occupants being neither freeholders nor tenants	No. of acres of arable Land.	Bushels of Wheat.	Bushels of Barley.	Bushels of Oats.	Bushels of Potatoes.	Bushels of Turneps.	Pounds of Cloven Sheep.	Tons of Hay.	No. of yards of filled Cloth manufactured last year.	No. of yards of Cloth not filled manufactured last year.		Pounds of Cheese made last year.
No. 1.	155	68	10	184	17,169	1721	1895	6523	18,767	4458	13,683	72,623	3290	569	3289	9633	9633		
2.	7	132	—	139	6869	365	911	3560	14,438	1934	6515	51	39,226	553	160	1793	3510	—	
3.	—	74	22	924	2210	113	779	3511	6597	2984	11,480	319	29,774	2669	482	244	1776	4603	75
4.	—	113	3	80	5481	851	16	2465	4254	1792	5997	312	18,770	7038	32	208	883	3224	372
5.	5	77	16	80	5151	439	—	2452	3683	1136	8018	56	14,330	1418	111	111	700	2587	—
6.	4	39	—	310	3132	996	150	1438	2168	626	9979	101	9330	1883	31	91	499	1691	53
Total.	230	463	51	10,095	30,543	4317	6744	19,960	50,027	12,951	37,042	809	171,247	17,389	599	1366	5912	22,521	362

FIRST ELECTORAL DISTRICT OF PRINCE COUNTY. (continued).

NUMBER OF TOWNSHIP	Pounds of Butter made last year.		No. of Thrashing Machines.		Horses.	Neat Cattle.	Sheep.	Hogs.	Churches.	School-houses.	Brewing and Distilling estab- lishments.	Tanneries.	Pounds of Leather manufac- tured last year.	Tobacco Manufacturers.	Fishing establishments.	Number of persons fishing last year.	Number of barrels of Mackerel cured last year.	Number of barrels of Herrings or Alewives cured last year.	Number of quintals of Fish or Lake cured last year.	Number of gallons of Fish Oil made last year.	Number of Hours owned for fishing purposes.	Grain Mills.	MILLS.				Number of barrels of Lime made last year.	Trick Kilns.	Picks manufactured last year.	Sleighs manufactured last year.			
	No. 1.	No. 2.	No. 3.	No. 4.	No. 5.	No. 6.	No. 7.	No. 8.	No. 9.	No. 10.	No. 11.	No. 12.	No. 13.	No. 14.	No. 15.	No. 16.	No. 17.	No. 18.	No. 19.	No. 20.	No. 21.	No. 22.	No. 23.	No. 24.	No. 25.	No. 26.	No. 27.	No. 28.	No. 29.	No. 30.			
	552	5	325	1160	3171	1129	10	1	17	126	1343	1528	275	3715	124	4	4	1	1	1	1	1	1	1	1	1	1	1	1	1	700,000		
	4028	4	184	186	1005	427	1	3	103	70	231	131	716	21	4	1	1	1	1	1	1	1	1	1	1	1	1	1	1				
	2627	5	221	706	1047	465	1	3	1300	16	107	207	519	759	13	4	1	1	1	1	1	1	1	1	1	1	1	1	1				
	7201	5	131	391	783	331	2	2	235	35	16	108	27	1	1	1	1	1	1	1	1	1	1	1	1	1	1	1	1				
	4923	1	405	624	260	1	1	1	145	31	269	606	124	47	14	1	1	1	1	1	1	1	1	1	1	1	1	1	1	1			
	3614	2	261	262	419	169	1	1	1673	17	320	1365	2532	7019	4692	154	13	3	13	1	1	1	1	1	1	1	1	1	1	1	231	700,000	
Total.	8829	21	1261	3241	7043	2721	7	22	3	1673	17	320	1365	2532	7019	4692	154	13	3	13	1	1	1	1	1	1	1	1	1	1	231	700,000	

SECOND ELECTORAL DISTRICT OF PRINCE COUNTY.

NUMBER OF TOWNSHIP.	MALES.						FEMALES.						Total number in each family, including prentices and apprentices.	Males.	Females.							
	Under 5 years.		From 5 to 16.		From 16 to 21.		From 21 to 45.		From 45 to 60.		Upwards of 60.					No. not vaccinated nor had Small Pox.	Married.	Single.	Insane.	Married last year.	Deaths last year.	Births last year.
	From 5 to 16.	From 16 to 21.	From 5 to 16.	From 16 to 21.	From 21 to 45.	From 45 to 60.	Upwards of 60.	Upwards of 60.	Upwards of 60.	Upwards of 60.	Blind.	Deaf and dumb.										
No. 7.	63	40	58	20	15	38	57	16	31	376	432	509	509	173	432	3	7	9	56	509		
8.	50	87	70	18	13	40	57	16	11	376	432	509	509	183	432	3	9	56	509	509		
9.	32	34	36	10	3	26	13	9	4	232	300	350	350	71	300	1	1	10	232	350		
10.	16	25	9	5	2	12	10	9	5	72	40	130	170	40	130	1	1	8	170	170		
11.	16	25	21	19	13	37	40	66	16	302	143	354	354	143	354	2	12	9	302	354		
12.	25	30	48	9	11	35	42	43	11	252	95	206	206	95	206	3	9	2	252	301		
13.	75	84	38	33	25	72	62	80	25	436	313	584	584	313	584	3	2	15	436	584		
Total.	310	441	171	466	119	262	443	305	419	103	56	3	1962	565	2215	9	35	45	131	3064	58	

SECOND ELECTORAL DISTRICT OF PRINCE COUNTY, (continued.)

NUMBER OF TOWNSHIP	MEMBERS OF THE CHURCH OF ENGLAND												Total number of Inhabitants	Total number of Males	Total number of Females	Population in 1848	Population in 1855	Increase since 1855.						
	Members of the Church of England	Presbyterian Church of Lower Provinces	Kirk of Scotland	Roman Catholics	Methodists	Baptists	Bible Christians	Quakers	Unitarians	Other Denominations	Religious profession not stated	NATIVES OF												
	England	Lower Provinces	Scotland									England	Scotland	Ireland	British Provinces	Prince Edward Island	Other countries	Country not stated						
No. 7,	34	60	1	214	119	7	149	7	54	14	1	27	9	30	14	511	5	1	310	288	595	397	423	175
8,	22	114	11	145	130	64	54	12	17	37	2	17	17	26	419	419	3	5	272	237	509	343	434	105
9,	10	69	—	171	—	—	12	—	12	11	1	12	11	4	237	237	3	—	130	132	262	114	150	112
10,	19	—	—	75	6	—	56	—	10	6	1	10	10	3	134	134	4	7	86	85	170	72	132	38
11,	143	83	—	253	12	7	3	—	12	5	66	10	4	4	414	414	—	—	260	251	511	350	440	71
12,	121	93	—	30	12	70	—	—	23	4	2	8	2	2	259	259	—	—	159	167	335	197	265	61
13,	162	291	12	231	120	2	40	—	63	12	15	17	701	5	10	438	391	529	438	391	829	496	624	200
Total,	511	730	24	1122	357	28	386	—	115	12	161	75	121	86	2715	2715	21	23	1654	1551	3205	1965	2443	762



SECOND ELECTORAL DISTRICT OF PRINCE COUNTY, (continued).

NUMBER OF TOWNSHIP	No. of persons holding Land of			No. OF ACRES HELD				CROPS RAISED IN 1860								No. of yards of Cloth not fulled manufactured last year.	Pounds of Cheese made last year.		
	First quality.	Second quality.	Third quality.	In the sample.	Under Lease or agreement for Lease.	By verbal agreement.	Occupants being neither freeholders nor tenants.	No. of acres of arable Land.	Bushels of Wheat.	Bushels of Barley.	Bushels of Oats.	Bushels of Buckwheat.	Bushels of Potatoes.	Bushels of Turneps.	Pounds of Cloven Seep.			Tons of Hay.	No. of yards of fulled Cloth manufactured last year.
No. 7.	83			3001	4261	300	2586	5323	1100	13,276	434	13,030	3070	585	88	259	1026	3125	140
8.	41	27		861	468	400	2453	805	3661	1802	58	11,465	585	88	259	781	2529	562	2529
9.		31	12	136	169	612	607	667	3661	1802	58	4782	277	461	265	461	265	743	200
10.		21		495	262	150	647	761	246	1579	21	3115	866	50	69	909	691	20	691
11.	49	17	10	8912	196	103	3674	4339	657	6990	78	20,950	1458	6	219	729	2584	234	2584
12.	22	20		1765	2790	294	1392	1351	532	4111	151	8238	600	12	76	437	1562	92	1562
13.	90	20	11	13,000	6453	979	592	7433	5674	1948	431	33,367	3161	50	408	1272	3193	1000	3193
Total.	288	186	33	36,297	17,915	2538	2533	15,592	21,013	9380	11,443	1485	95,177	14,971	176	1419	4736	14,756	2045

SECOND ELECTORAL DISTRICT OF PRINCE COUNTY, (continued).

NUMBER OF TOWNSHIP	Pounds of Butter made last year		No. of Thrashing Machines		Horses.	Neat Cattle	Sheep.	Logs.	Churches	School-houses.	Brewing and Distilling estab-lishments.	Tanneries	Pounds of Leather manufac-tured last year.	Tobacco Manufactories.	Fishing establishments.	Number of persons fishing last year.	Number of barrels of Mackerel cured last year.	Number of barrels of Herrings or Alewives cured last year.	Number of quintals of Codfish or Hake cured last year.	Number of gallons of Fish Oil made last year.	Number of Boats owned for fishing purposes.	MILLS:						Lime Kilns.	Number of barrels of Lime made last year.	Brick Kilns.	Bricks manufactured last year.	Number of Carriages and Sticks manufactured last year.			
	No.	Year	No.	Year																		Grist Mills.	Carding Mills.	Saw Mills.	Fulling and Dressing Mills.										
No. 7.	6481	5	142	559	930	350	3	1	1000	70	34	111	102	137	14	42	3	1	1	1	1	1	1	1	1	1	1	1	1	1	1	1			
8.	5437	5	105	555	709	270	3	1	1440	45	45	982	12	12	5	1	1	1	1	1	1	1	1	1	1	1	1	1	1	1	1	1	1		
9.	2914	2	38	155	273	109	1	1	74	23	23	91	6	6	1	1	1	1	1	1	1	1	1	1	1	1	1	1	1	1	1	1	1		
10.	1760	2	31	139	137	58	1	1	140	8	8	32	5	5	1	1	1	1	1	1	1	1	1	1	1	1	1	1	1	1	1	1	1	1	
11.	7916	9	142	559	885	316	1	1	215	47	47	6	111	86	56	8	1	1	1	1	1	1	1	1	1	1	1	1	1	1	1	1	1	1	
12.	2922	7	78	216	386	158	1	1	120	25	25	119	37	10	4	1	1	1	1	1	1	1	1	1	1	1	1	1	1	1	1	1	1	1	1
13.	8895	12	251	850	1375	580	2	1	120	62	62	32	233	120	27	1	1	1	1	1	1	1	1	1	1	1	1	1	1	1	1	1	1	1	
Total.	35,088	30	33	3366	4715	1750	7	6	1015	237	40	979	405	215	52	6	3	10	25000	1	15000	1	1	1	1	1	1	1	1	1	1	1	1	1	1

THIRD ELECTORAL DISTRICT OF PRINCE COUNTY.

NUMBER OF TOWNSHIP.	MALES.						FEMALES.						Blind.	Deaf and dumb.	No. not vaccinated nor had Small Pox.	Married.	Single.	Inmate.	Married last year.	Deaths last year.	Births last year.	Total number in each family, including servants and apprentices.	INDIANS.					
	From 5 to 16.		From 16 to 21.		From 21 to 45.		From 45 to 60.		From 5 to 16.		From 16 to 21.												From 21 to 45.		From 45 to 60.		Males.	Females.
	Under 5 years.	From 5 to 16.	From 16 to 21.	From 21 to 45.	From 45 to 60.	Under 5 years.	From 5 to 16.	From 16 to 21.	From 21 to 45.	From 45 to 60.	Under 5 years.	From 5 to 16.											From 16 to 21.	From 21 to 45.	From 45 to 60.	From 5 to 16.	From 16 to 21.	From 21 to 45.
No. 14,	68	160	62	145	42	17	86	143	65	149	30	15	8	573	275	733	-	7	22	39	1011	-	-					
15,	129	201	88	253	44	45	111	169	92	245	37	22	6	950	458	928	4	5	19	1386	-	-						
16,	71	161	68	154	32	23	62	112	55	105	36	12	6	543	217	696	2	7	9	13	543	3	4					
17,	64	60	66	150	46	34	85	150	64	185	47	32	5	584	302	775	1	15	17	46	1045	3	4					
P. Town & Royalty.	22	31	21	63	21	17	29	46	22	79	17	17	4	50	135	360	-	3	5	6	385	4	6					
Total,	408	713	256	715	205	141	365	590	265	703	168	101	13	6	3010	1380	5273	7	37	58	1223	4673	7	10				

THIRD ELECTORAL DISTRICT OF PRINCE COUNTY, (continued.)

NUMBER OF TOWNSHIP.	Members of the Church of England.	Presbyterian Church of Lower Province.	Kirk of Scotland.	Roman Catholics.	Methodists.	Baptists.	Hible Christians.	Quakers.	Universalists.	Other Denominations.	Religious profession not stated.	NATIVES OF										Total number of Inhabitants.	Population in 1848.	Population in 1855.	Increase since 1855.	Increase since 1856.				
												England.	Scotland.	Ireland.	British Provinces.	Prince Edward Island.	Other countries.	Country not stated.	Total number of Males.	Total number of Females.										
No 14.	34	129	—	839	—	5	—	—	—	1	1	34	20	14	14	14	14	14	14	14	929	—	10	325	486	1011	692	808	—	303
15.	14	19	36	1201	62	24	12	—	1	10	17	19	5	5	20	233	35	36	760	635	1386	780	1076	—	310	760	1076	—	310	
16.	—	—	15	464	35	23	—	—	5	5	5	27	30	29	17	744	1	—	472	378	850	807	798	—	52	850	807	798	—	52
18.	—	—	—	396	3	6	4	—	1	5	—	18	38	36	30	946	—	—	651	497	1048	934	984	—	64	1048	934	984	—	64
19.	—	—	2	35	9	—	—	—	—	—	—	3	6	15	10	318	—	—	179	216	395	447	405	—	10	395	447	405	—	10
P. Town & Royalty.	—	—	—	—	—	—	—	—	—	—	—	91	96	96	91	3110	42	58	2487	2203	4680	3660	4071	—	10	4680	3660	4071	—	609
Total.	—	—	46	2335	102	58	16	—	222	20	91	96	96	91	3110	42	58	2487	2203	4680	3660	4071	—	10	609	4680	3660	4071	—	609

THIRD ELECTORAL DISTRICT OF PRINCE COUNTY. (continued).

NUMBER OF TOWNSHIP.	No. of persons holding Land of			No. OF ACRES HELD				No. of acres of arable Land.	CROPS RAISED IN 1-69								Pounds of Cheese made last year.		
	First quality.	Second quality.	Third quality.	In fee simple.	Under Lease or agreement for Lease.	By verbal agreement.	Occupants being neither		Bushels of Wheat.	Bushels of Barley.	Bushels of Oats.	Bushels of Beckwheat.	Bushels of Potatoes.	Bushels of Turneps.	Pounds of Cloven Seed.	Tons of Hay.		No of yards of filled Cloth manufactured last year.	No. of yards of Cloth not filled manufactured last year.
No. 14.	50	70	80	10,385	3507	1028	178	3508	2483	3591	21,755	906	810	1737	137	346,284	3532	1071	3532
15.	192	—	—	14,467	180	1513	2520	4772	6869	4638	52,989	705	34,618	2761	32	383,2133	3170	10	3170
16.	—	100	80	1786	9891	378	525	3680	3028	3104	33,739	1167	25,392	2592	154	513,1720	4159	1773	4159
18.	60	63	31	9231	5103	1483	—	8628	4917	6947	47,743	1120	38,617	5634	327	546,2429	5387	1716	5387
P. Town & Royalty.	40	10	—	5345	555	—	—	3226	3147	2728	30,365	312	16,135	3755	96	255,1074	2103	620	2103
Total.	342	243	91	41,217	15,534	4,002	3527	22,815	19,646	20,618	186,621	4319	143,852	16,179	796	2,113,9665	15,351	5197	15,351

THIRD ELECTORAL DISTRICT OF PRINCE COUNTY. (continued).

NUMBER OF TOWNSHIP	Pounds of Butter made last year.	No. of Trussing Machines.	Horses.	Neat Cattle.	Sheep.	Logs.	Churches.	School-houses.	Brewing and Distilling establishments.	Tanneries.	Pounds of Leather manufactured last year.	Tobacco Manufactories.	Fishing establishments.	Number of persons fishing last year.	Number of barrels of Mackerele cured last year.	Number of barrels of Herrings or Alewives cured last year.	Number of quintals of Codfish or Hake cured last year.	Number of gallons of Fish Oil made last year.	Number of Boats owned for fishing purposes.	MILLS					Bricks manufactured last year.	Number of Carriages and Sleighs manufactured last year.			
																				Grain Mills.	(Sawing) Mills.	Saw Mills.	Pulping and Dressing Mills.	Lime Kilns.			Number of barrels of Lime made last year.	Brick Kilns.	
No. 14.	6128	8	223	821	1374	673	1	1	1	1	512	2	58	12	407	147	78	10	12	1	1	1	1	1	60	1	200,000		
15.	6439	19	272	933	1664	589	1	1	1	1	35	9	99	20	16	4	2	1	1	1	1	1	1	1	1	1			
16.	7344	14	316	921	1432	624	1	1	1	1	463	1	51	7	310	242	96	15	1	1	1	1	1	1	1	53		42	
17.	12	506	22	315	1141	1930	2	3	1	1	386	1	42	15	236	289	124	15	1	1	1	1	1	1	1	2	470		384
P. Town & Royalty.	3546	7	136	417	849	287	1	1	1	1	360	1	190	530	1824	694	305	57	5	5	4	4	4	4	582	1	200,000	80	
Total.	39,207	70	1530	4253	7107	3888	6	16	3	3	1931	2	100	530	1824	694	305	57	5	5	4	4	4	4	582	1	200,000	80	

FOURTH ELECTORAL DISTRICT OF PRINCE COUNTY.

NUMBER OF TOWNSHIP.	MALES.								FEMALES.								Blind		Total number in each family, including servants and apprentices.	INDIANS																																																																																																																																																																																		
	Under 5 years.				Upwards of 50.				From 5 to 15.				From 16 to 21.				From 21 to 45.				From 45 to 60.				Upwards of 60.				Total number in each family, including servants and apprentices.	Males	Females																																																																																																																																																																							
	From 5 to 10.	From 10 to 15.	From 15 to 20.	From 20 to 25.	From 25 to 30.	From 30 to 35.	From 35 to 40.	From 40 to 45.	From 45 to 50.	From 50 to 55.	From 55 to 60.	From 60 to 65.	From 65 to 70.	From 70 to 75.	From 75 to 80.	From 80 to 85.	From 85 to 90.	From 90 to 95.		From 95 to 100.	From 100 to 105.	From 105 to 110.	From 110 to 115.	From 115 to 120.	From 120 to 125.	From 125 to 130.	From 130 to 135.	From 135 to 140.				From 140 to 145.	From 145 to 150.	From 150 to 155.	From 155 to 160.	From 160 to 165.	From 165 to 170.	From 170 to 175.	From 175 to 180.	From 180 to 185.	From 185 to 190.	From 190 to 195.	From 195 to 200.	From 200 to 205.	From 205 to 210.	From 210 to 215.	From 215 to 220.	From 220 to 225.	From 225 to 230.	From 230 to 235.	From 235 to 240.	From 240 to 245.	From 245 to 250.	From 250 to 255.	From 255 to 260.	From 260 to 265.	From 265 to 270.	From 270 to 275.	From 275 to 280.	From 280 to 285.	From 285 to 290.	From 290 to 295.	From 295 to 300.	From 300 to 305.	From 305 to 310.	From 310 to 315.	From 315 to 320.	From 320 to 325.	From 325 to 330.	From 330 to 335.	From 335 to 340.	From 340 to 345.	From 345 to 350.	From 350 to 355.	From 355 to 360.	From 360 to 365.	From 365 to 370.	From 370 to 375.	From 375 to 380.	From 380 to 385.	From 385 to 390.	From 390 to 395.	From 395 to 400.	From 400 to 405.	From 405 to 410.	From 410 to 415.	From 415 to 420.	From 420 to 425.	From 425 to 430.	From 430 to 435.	From 435 to 440.	From 440 to 445.	From 445 to 450.	From 450 to 455.	From 455 to 460.	From 460 to 465.	From 465 to 470.	From 470 to 475.	From 475 to 480.	From 480 to 485.	From 485 to 490.	From 490 to 495.	From 495 to 500.	From 500 to 505.	From 505 to 510.	From 510 to 515.	From 515 to 520.	From 520 to 525.	From 525 to 530.	From 530 to 535.	From 535 to 540.	From 540 to 545.	From 545 to 550.	From 550 to 555.	From 555 to 560.	From 560 to 565.	From 565 to 570.	From 570 to 575.	From 575 to 580.	From 580 to 585.	From 585 to 590.	From 590 to 595.	From 595 to 600.	From 600 to 605.	From 605 to 610.	From 610 to 615.	From 615 to 620.	From 620 to 625.	From 625 to 630.	From 630 to 635.	From 635 to 640.	From 640 to 645.	From 645 to 650.	From 650 to 655.	From 655 to 660.	From 660 to 665.	From 665 to 670.	From 670 to 675.	From 675 to 680.	From 680 to 685.	From 685 to 690.	From 690 to 695.	From 695 to 700.	From 700 to 705.	From 705 to 710.	From 710 to 715.	From 715 to 720.	From 720 to 725.	From 725 to 730.	From 730 to 735.	From 735 to 740.	From 740 to 745.	From 745 to 750.	From 750 to 755.	From 755 to 760.	From 760 to 765.	From 765 to 770.	From 770 to 775.	From 775 to 780.	From 780 to 785.	From 785 to 790.	From 790 to 795.	From 795 to 800.	From 800 to 805.	From 805 to 810.	From 810 to 815.	From 815 to 820.	From 820 to 825.	From 825 to 830.	From 830 to 835.	From 835 to 840.	From 840 to 845.	From 845 to 850.	From 850 to 855.	From 855 to 860.	From 860 to 865.	From 865 to 870.	From 870 to 875.	From 875 to 880.	From 880 to 885.	From 885 to 890.	From 890 to 895.	From 895 to 900.	From 900 to 905.	From 905 to 910.	From 910 to 915.	From 915 to 920.	From 920 to 925.	From 925 to 930.	From 930 to 935.	From 935 to 940.	From 940 to 945.	From 945 to 950.	From 950 to 955.	From 955 to 960.	From 960 to 965.	From 965 to 970.	From 970 to 975.
No. 19.	48	174	74	185	63	38	95	192	81	197	56	31	610	349	935	1	4	16	49	1284	1	1																																																																																																																																																																																
25.	69	127	46	135	33	31	75	121	49	141	27	27	269	247	637	—	—	—	—	884	—	—																																																																																																																																																																																
26.	74	176	58	159	44	37	118	148	80	154	33	23	166	296	818	1	3	14	39	1114	1	3																																																																																																																																																																																
27.	97	165	75	174	48	49	121	204	79	175	64	30	575	316	938	1	5	32	41	1284	—	—																																																																																																																																																																																
28.	128	200	113	263	58	52	132	194	90	202	60	37	676	429	1040	—	18	45	53	1469	—	—																																																																																																																																																																																
Total.	460	842	366	856	246	207	511	862	382	882	210	148	3	2286	1667	4368	3	84	123	197	6035	1	3																																																																																																																																																																															

FOURTH ELECTORAL DISTRICT OF PRINCE COUNTY, (continued.)

NUMBER OF TOWNSHIP.	MEMBERS OF THE CHURCH OF ENGLAND.										NATIVES OF										Total number of Males.	Total number of Females.	Total number of Inhabitants.	Population in 1878.	Population in 1855.	Increase since 1855.	Increase since 1865.
	Members of the Church of England.	Presbyterian Church of Lower Province.	Rirk of Scotland.	Roman Catholics.	Methodists.	Baptists.	Bible Christians.	Quakers.	Unitarians.	Other Denominations.	Religious profession not stated.	England.	Scotland.	Ireland.	British Province.	Prince Edward Island.	Other countries.	Country not stated.									
No. 19.	191	333	42	488	189	27	10	4	—	—	66	65	52	16	104	2	39	659	655	1284	1333	1342	58	—	—		
25.	47	342	46	157	121	141	10	11	7	2	32	59	37	33	721	2	—	441	413	881	713	752	132	—	—		
26.	55	249	38	395	281	136	—	—	1	3	21	13	156	40	801	1	27	549	569	1115	518	586	592	—	—		
27.	47	292	46	619	323	56	—	—	1	1	10	18	238	41	921	3	48	608	670	1284	1031	1080	204	—	—		
28.	51	159	316	118	517	263	—	—	5	1	50	38	40	45	1290	3	—	751	715	1469	1307	1303	166	—	—		
Total.	361	1372	488	1772	1370	615	20	1514	7	179	193	523	151	4286	13	114	2981	3035	6039	5202	5263	58	58	724	—	—	



FOURTH ELECTORAL DISTRICT OF PRINCE COUNTY, (continued).

NUMBER OF TOWNSHIP	No. of persons holding land of			No. OF ACRES HELD				No of acres of arable land.	CROPS RAISED IN 1900								No. of yards of cloth manufactured last year.	No. of yards of cloth not filled manufactured last year.	Pounds of Cheese made last year.
	First quality.	Second quality.	Third quality.	In fee simple.	Under lease or agreement for lease.	By verbal agreement.	Occupants being neither freeholders nor tenants.		Bushels of Wheat.	Bushels of Barley.	Bushels of Oats.	Bushels of Buckwheat.	Bushels of Potatoes.	Bushels of Turneps.	Pounds of Cloven Seed.	Tons of Hay.			
No. 19.	20	147	6	5,100	13,426	250	25	9,116	3216	4544	62,530	2265	49,360	4440	916	506	3,969	7023	627
20.	100	36	—	15,454	926	186	250	9154	3769	2026	72,674	3150	35,280	3371	718	516	3146	5451	1637
26.	100	60	—	13,631	5905	1141	852	6658	4883	2703	45,598	3100	38,541	5778	212	937	3655	5536	1140
27.	192	—	—	4836	10,400	360	4730	5153	3783	3749	37,541	4359	20,197	2835	401	549	2532	6468	454
28.	180	24	—	10,362	9628	—	—	10,097	7988	7112	68,174	6670	38,784	9185	1000	1269	4923	6706	756
Total.	662	267	6	49,675	43,015	1946	8553	43,408	23,029	20,131	319,957	19,513	221,462	28,609	7173	3837	16005	32,154	6204

FOURTH ELECTORAL DISTRICT OF PRINCE COUNTY, (continued).

NUMBER OF TOWNSHIP	Pounds of Rubber made last year.		No. of Thrashing Machines.		Horses.	Neat Cattle.	Sheep.	Hogs.	Churches.	School-houses.	Brewing and Distilling estab.	Tanneries.	Pounds of Leather manufac-tured last year.	Tobacco Manufacturers.	Fishing establishments.	Number of persons fishing last year.	Number of barrels of Stacker cured last year.	Number of barrels of Herrings or Alewives cured last year.	Number of quintals of Codfish or Lake cured last year.	Number of Gallons of Fish Oil made last year.	Number of Houts owned for faling purposes.	MILLS.					Number of barrels of Lime made last year.	Brick Kilns.	Bricks manufactured last year.	Number of Carriages and Sleighs manufactured last year.				
	No. 19.	25.	No. 19.	25.	No. 19.	25.	No. 19.	25.	No. 19.	25.	No. 19.	25.	No. 19.	25.	No. 19.	25.	No. 19.	25.	No. 19.	25.	No. 19.	25.	No. 19.	25.	No. 19.	25.	No. 19.	25.	No. 19.	25.				
	16,746	98	415,1552	2341	725	2	5	1	4300	13	5	103	70	51	11	3	1	1	1	1	1	1	1	1	1	1	1	1	1	1	1			
	17,340	32	363,1148	2128	510	2	5	1	409	1	1	12	12	1	1	1	1	1	1	1	1	1	1	1	1	1	1	1	1	1	1			
	16,929	23	367,1142	2174	562	2	5	1	3450	1	1	1	1	1	1	1	1	1	1	1	1	1	1	1	1	1	1	1	1	1	1	1		
	15,919	21	384,1229	2085	501	1	4	1	1000	1	1	1	1	1	1	1	1	1	1	1	1	1	1	1	1	1	1	1	1	1	1	1	1	
	20,846	22	551,1671	2246	546	6	6	1	1000	1	1	1	1	1	1	1	1	1	1	1	1	1	1	1	1	1	1	1	1	1	1	1	1	1
Total.	69,801	176	2077,5552	11961	2847	13	25	2	5	12,656	17	5	120	70	51	12	10	4	20	3	2	300	1	30,000	157	133	13	50	130,000	197	50			

FIFTH ELECTORAL DISTRICT OF PRINCE COUNTY.

NUMBER OF TOWNSHIP	MALES						FEMALES						Deaf and dumb.	Blind.	No. not vaccinated nor had Small Pox.	Married.	Single.	Inmate.	Married last year.	Deaths last year.	Births last year.	Total number in each family, including servants and apprentices.	Sexes.	
	Under 5 years.	From 5 to 10.	From 10 to 21.	From 21 to 45.	From 45 to 60.	Upwards of 60.	Under 5 years.	From 5 to 16.	From 16 to 21.	From 21 to 45.	From 45 to 60.	Upwards of 60.												
No. 1.	170	271	99	242	51	40	199	291	124	310	62	27	1	1	591	569	1963	1	10	14	78	2007	6	5

FIFTH ELECTORAL DISTRICT OF PRINCE COUNTY. (continued.)

NUMBER OF TOWNSHIP	NATIVES OF											Total number of Males.	Total number of Females.	Total number of Inhabitants	Population in 1849.	Population in 1856.	Increase since 1856.	Increase since 1865.	537													
	Members of the Church of England.	Presbyterian Church of Lower Province.	Kirk of Scotland.	Roman Catholics.	Methodists.	Baptists.	Irish Christians.	Quakers.	Unitarians.	Other Denominations.	Religious profession not stated.									England.	Scotland.	Ireland.	British Provinces.	Prince Edward Island.	Other counties.	Country not stated.						
No. 17.	641	354	45	764	96	8				22	30	91	42	54	90	1763	5	1	1011	1037	3045	1224	1311	—	—	—	—	—	—	—	—	—

FIFTH ELECTORAL DISTRICT OF PRINCE COUNTY. (continued).

NUMBER OF TOWNSHIP	No. of persons holding Land of			No. OF ACRES HELD				CROPS RAISED IN 1860								Founds of Cheese made last year.	No. of yards of Cloth not full manufactured last year.	No. of yards of Cloth manufactured last year.	
	First quality.	Second quality.	Third quality.	In fee simple.	Under Lease or agreement for Lease.	By verbal agreement.	Occupants being neither freeholders nor tenants.	No. of acres of arable Land.	Bushels of Wheat.	Bushels of Barley.	Bushels of Oats.	Bushels of Ruckwheat.	Bushels of Potatoes.	Bushels of Turnips.	Pounds of Clover Seed.				Tons of Hay.
No. 17,	160	30	—	14,365	2452	30	710	12,633	6503	6212	48,125	3075	43,563	6882	310	772	2913	6366	420

FIFTH ELECTORAL DISTRICT OF PRINCE COUNTY. (continued).

NUMBER OF TOWNSHIP	Pounds of Butter made last year.		No. of Threshing Machines	Horses.	Neat Cattle.	Sheep.	Hogs.	Churches.	School-houses.	Brewing and Distilling establishments.	Tanneries.	Pounds of Leather manufactured last year.	Tobacco Manufactories.	Fishing establishments.	Number of persons fishing last year.	Number of barrels of Mackerel cured last year.	Number of barrels of Herrings or Alewives cured last year.	Number of quarts of Codfish or Lake cured last year.	Number of gallons of Fish Oil made last year.	Number of boats owned for fishing purposes.	MILLS					Number of Carriages and Sleighs manufactured last year.	Bricks manufactured last year.	
	14-8-1	1893																			Carding Mills.	Saw Mills.	Fuling and Dressing Mills.	Lime Kilns.	Number of barrels of Lime made last year.			Brick Kilns.
No. 17.	-	-	22	419	1240	1623	716	7	5	3	3	9250										2	1	3	2	1600	-	31

FIRST ELECTORAL DISTRICT OF QUEEN'S COUNTY.

NUMBER OF TOWNSHIP	MALES						FEMALES											Total number in each family including apprentices and apprentices.	Males.	Females.													
	From 5 years.			From 10 to 21.			From 16 to 21.			From 21 to 45.			From 45 to 60.			Teat and dumb.					Blind.	No. not vaccinated nor had Small Pox.	Married.	Single.	Insane.	Married last year.	Deaths last year.	Births last year.					
	Under 5 years.	From 5 to 10.	From 10 to 15.	From 15 to 20.	From 20 to 25.	From 25 to 30.	From 30 to 35.	From 35 to 40.	From 40 to 45.	From 45 to 50.	From 50 to 55.	From 55 to 60.	From 60 to 65.	From 65 to 70.	From 70 to 75.	From 75 to 80.	From 80 to 85.												From 85 to 90.				
No. 30.	82	175	71	165	48	39	61	152	96	167	59	82	1	1	1022	295	545	10	7	9	30	143											
21.	129	189	70	222	57	48	115	173	87	217	66	36	5	4	1022	427	960	3	15	18	33	1407											
32.	108	354	73	196	64	41	163	253	93	199	61	37			1120	415	1047	1	9	13	43	1465											
28.	174	339	163	211	78	65	177	196	169	213	88	41	1	1	513	473	1331	5	10	26	61	1724											
30.	131	253	88	170	61	41	111	153	104	165	59	22	3	3	360	321	940	1	4	16	27	1361											
67.	104	178	7	145	46	38	95	148	51	140	65	24			960	300	583	2	29	8	39	1133											
Total.	725	1316	483	1110	351	275	663	1095	570	1101	348	188	9	9	6317	2337	5866	22	74	93	239	8253											

**FIRST ELECTORAL DISTRICT OF QUEEN'S COUNTY, (continued.)**

NUMBER OF TOWNSHIP	Members of the Church of England	Presbyterian Church of Lower Provinces	Kirk of Scotland	Roman Catholics	Methodists	Baptists	Bible Christians	Quakers	Unitarians	Other Denominations	Religious profession not stated.	NATIVES OF							Total number of Males.	Total number of Females.	Total number of Inhabitants	Population in 1848	Population in 1855.	Increase since 1855.
												England	Scotland	Ireland	British Provinces	Prince Edward Island.	Other countries.	Country not stated.						
No. 30.	283	518	2	245	31	—	—	—	—	—	24	41	94	45	26	922	5	10	498	563	1143	1032	1189	4
21.	277	533	2	151	68	50	11	—	—	—	1	46	236	46	34	1025	4	16	713	694	1407	886	1097	310
22.	80	652	55	609	26	31	—	—	—	—	1	12	225	153	23	1049	3	739	726	1465	1169	1369	96	
23.	231	147	386	398	277	51	—	31	—	—	—	96	120	211	61	1200	39	—	930	794	1724	1481	1610	114
24.	27	148	633	601	33	19	—	—	—	—	—	—	149	211	19	975	4	—	714	647	1361	991	1076	365
25.	89	728	72	157	12	5	17	—	—	—	—	11	298	61	16	743	1	—	590	543	1133	861	974	159
67.	—	—	—	—	—	—	—	—	—	—	—	—	—	—	—	—	—	—	—	—	—	—	—	—
Total.	1006	3076	1050	2452	412	219	38	—	35	25	206	1122	736	179	6914	56	26	4286	3967	8283	6430	7863	7965	965



**FIRST ELECTORAL DISTRICT OF QUEEN'S COUNTY, (continued).**

NUMBER OF TOWNSHIP.	No. of persons holding Land of			No. OF ACRES HELD				CROPS RAISED IN 1860										Tons of Cheese made last year.	No. of yards of Cloth not failed manufactured last year.	No. of yards of felled Cloth manufactured last year.
	First quality.	Second quality.	Third quality.	In fee simple.	Under Lease or agreement for Lease.	By verbal agreement.	Occupants being neither freeholders nor tenants.	No. of acres of arable Land.	Bushels of Wheat.	Bushels of Barley.	Bushels of Oats.	Bushels of Beans.	Bushels of Peas.	Bushels of Potatoes.	Bushels of Turneps.	Bushels of Clover Seed.	Tons of Hay.			
No. 20.	10	85	71	5996	12,457	—	—	6553	5479	3606	43,766	1067	40,428	3280	—	660	3705	5935	1131	
21.	59	86	74	4389	10,675	—	—	5190	6259	4397	40,060	1172	48,051	5301	330	662	5540	6149	2560	
22.	181	40	10	1273	16,960	50	494	5161	4855	1911	43,972	540	42,505	6642	—	438	1562	5884	710	
29.	45	146	30	190	13,851	228	—	9716	31,746	5879	53,111	829	60,111	2684	3050	613	3243	6169	11384	
30.	11	202	—	4792	7396	354	4385	3636	2711	2972	28,578	1250	46,365	1012	—	21	286	1381	4558	
67.	113	51	—	9872	6225	9260	50	6758	2923	1141	47,297	1789	36,456	7036	—	417	2454	4681	108	
<b>Total.</b>	<b>414</b>	<b>623</b>	<b>175</b>	<b>23,212</b>	<b>69,470</b>	<b>1888</b>	<b>4929</b>	<b>37,026</b>	<b>31,634</b>	<b>19,296</b>	<b>292,397</b>	<b>6656</b>	<b>274,443</b>	<b>25,985</b>	<b>2391</b>	<b>3066</b>	<b>13855</b>	<b>33,316</b>	<b>69874</b>	

**FIRST ELECTORAL DISTRICT OF QUEEN'S COUNTY, (continued).**

NUMBER OF TOWNSHIP	MILLS																												
	No. of Threshing Machines.	Trucks.	Horses.	Wool Cutters.	Sheep.	Hogs.	Churches.	School-houses.	Brewing and Distilling estab-lishments.	Tanneries.	Pounds of Leather manufac-tured last year.	Tobacco Manufactories.	Fishing establishments.	Number of persons fishing last year.	Number of barrels of Stackered cured last year.	Number of barrels of Herrings or Alewives cured last year.	Number of quinds of Codfish or Lake cured last year.	Number of gallons of Fish Oil made last year.	Number of Boats owned for fishing purposes.	Grist Mills.	Carding Mills.	Saw Mills.	Rolling and Dressing Mills.	Lime Kilns.	Number of barrels of Lime made last year.	Brick Kilns.	Trucks manufactured last year.	Number of Carriages and Sleighs manufactured last year.	
No. 20	885	19	320	904	1186	514	2	5	1	500	23	39	75	174	458	364	139	41	6	4	2	2	1	1	44				
21	11,064	13	341	10,759	2,002	722	4	1	1												5	1	5	3	50				
22	10,906	4	357	10,391	1,662	539	3	7	1												3	1	7	1	500				
23	19,732	23	437	11,115	2,194	671	6	1	2	206	25	355	45	16	5	2	1	1	1	3	5	2	1	1	1,080				
24	5,204	4	263	878	1,134	590	1	2	1	600	9	80									3	1	1	1					
25	11,745	12	294	11,139	1,753	563	3	1	2	4,706	2	132	213	954	639	370	63	20	5	19	4	1	1		61,374				
Total.	67,923	75	2,012	6,171	1,075	4,592	19	22	2	4,706	2	132	213	954	639	370	63	20	5	19	4	1	1		61,374				

SECOND ELECTORAL DISTRICT OF QUEEN'S COUNTY.

NUMBER OF TOWNSHIP.	MALES						FEMALES										Totals					
	Under 5 years.		From 5 to 16.		From 16 to 21.		From 21 to 43.		From 43 to 60.		Under 5 years.		From 5 to 16.		From 16 to 21.		From 21 to 46.		From 45 to 60.		Totals	
No. 23.	149	269	101	960	73	54	157	286	130	265	66	56	7	1146	517	1339	43	16	40	70	1856	1856
24.	204	364	147	290	110	67	193	304	164	324	89	68	2	1747	570	1739	3	11	29	56	2329	2329
31.	69	230	85	141	67	41	108	201	89	173	65	33	1	840	413	916	—	1	36	35	1329	1329
32.	59	189	103	175	65	38	65	139	48	158	61	37	2	1057	358	844	1	3	4	14	1202	1202
65.	146	280	119	219	93	61	145	290	114	217	75	44	3	1057	458	1351	2	4	6	51	1812	1812
Total.	637	1322	576	1001	409	260	689	1242	585	1167	330	228	15	5880	2316	6212	18	46	100	226	8528	8528

SECOND ELECTORAL DISTRICT OF QUEEN'S COUNTY, (continued.)

NUMBER OF TOWNSHIP.	MEMBERS OF THE CHURCH OF ENGLAND.													Total number of Inhabitants	Population in 1848	Population in 1855.	Increase since 1855.											
	Members of the Church of England.	Præbiterian Church of Lower Provinces.	Kirk of Scotland.	Roman Catholics.	Methodists.	Baptists.	Bible Christians.	Quakers.	Unitarians.	Other Denominations.	Religious profession not stated.	NATIVES OF																
												England.	Scotland.	Ireland.	British Protestants.	Prince Edward Island.	Other countries.	Country not stated.	Total number of Males.	Total number of Females.								
No. 29.	96	454	62	786	31	69	195	—	—	—	—	151	4	108	160	95	15	15	31	9	16	905	951	1856	1855	1753	103	
30.	252	270	313	1286	24	65	52	—	—	—	—	130	79	118	43	30	9017	11	—	1157	1132	2930	1938	2912	1835	1938	2912	117
31.	101	306	195	255	316	141	—	—	—	—	—	112	2	163	184	93	88	975	—	657	672	1920	1754	1941	1848	1941	65	
32.	282	220	184	163	146	165	15	—	—	—	—	7	5	10	78	950	—	31	631	571	1302	1461	1451	1834	1461	1451	51	
65.	79	336	670	476	131	112	—	—	—	—	—	43	151	123	27	1447	11	6	800	904	1834	1459	1506	1834	1459	1506	328	
Total.	510	1585	1421	2947	348	612	392	—	—	—	—	1222	6	410	645	327	169	6916	31	4310	4240	8556	7990	7886	664	7886	664	

SECOND ELECTORAL DISTRICT OF QUEEN'S COUNTY: (continued).

NUMBER OF TOWNSHIP.	No. of persons holding Land of			No. OF ACRES HELD				CROPS RAISED IN 1860								No. of yards of Cloth manufactured last year.	No. of yards of Cloth not fully manufactured last year.	Pounds of Cheese made last year.	
	First quality.	Second quality.	Third quality.	In fee simple.	Under Lease or agreement for Lease.	By verbal agreement.	Occupants being neither freeholders nor tenants.	No. of acres of arable Land.	Bushels of Wheat.	Bushels of Barley.	Bushels of Oats.	Bushels of Beckweheat.	Bushels of Potatoes.	B. els of Turneps.	Pounds of Cloven Seed.				Tons of Hay.
No. 23.	76	190	16	4788	14,002	90	9031	12,149	3465	63,285	1127	63,311	22,241	1840	801	3923	4945	12,594	
24.	4	270	—	5124	14,389	2062	394	9822	12,186	7885	76,813	937	82,917	11,215	459	803	4137	10,584	1790
31.	133	57	—	9119	7979	176	7043	7289	2738	45,670	1270	59,777	4020	35	842	5931	3969	1690	
32.	37	105	12	7880	6176	345	9962	8375	6159	41,426	581	64,196	21,813	—	967	3564	3669	6572	
65.	165	127	12	4773	14,545	1	8496	9698	4483	46,350	736	89,544	8552	—	614	2378	7807	478	
Total.	393	758	31	31,661	57,975	2250	1318	41,688	29,597	24,670	223,527	4645	359,729	68,841	1337	14,689	17,433	37,389	22,721

SECOND ELECTORAL DISTRICT OF QUEEN'S COUNTY. (continued).

No. 23,	NUMBER OF TOWNSHIPS.		Houses.	No of Thrashing Machines.	Hinds of Cattle.	Sheep.	Hogs.	Churches.	School-houses.	Brewing and Distilling estab- lishments.	Tanneries.	Hinds of Leather manufac- tured last year.	Factories, manufactories, Pressing establishments.	Number of persons having last year.	Number of barrels of Shakered or Alewives cured last year.	Number of barrels of Herrings cured last year.	Number of quanta of Godfish or Alewives cured last year.	Number of gallons of Fish Oil made last year.	Number of Banks owned for fishing purposes.	MILLS.					Bricks manufactured last year.	Number of Carriages and Sleighs manufactured last year.	
	Boiler made last year.	Tram Mills.																		Tanning Mills.	Saw Mills.	Falling and Dressing Mills.	Lime Kilns.	Number of barrels of Lime made last year.			Brick Kilns.
24,	2, 3, 17	32	143, 647	558	763	5	6	1	1, 150	4	20	130	57	39	34	5	3	1	3	5	3	1	3		95	15	
31,	13, 4, 6	27	607	1, 583	3, 210	11	3	9																			
32,	16, 2, 3	6	379	1, 140	2, 116	7	3	6																			
65,	11, 5, 10	18	3, 7	97	2, 136	15	3	7																			
	11, 0, 88	11	1, 26	1, 160	2, 531	7	9	9																			
Total.	81, 0, 72	97	22, 2	6, 511	12, 562	37	2	1	33	1	1	1, 150	8	216	3, 659	31, 50	17, 06	1, 437	123	19	3	10	1	1	1	1	13

THIRD ELECTORAL DISTRICT OF QUEEN'S COUNTY.

NUMBER OF TOWNSHIP.	MALES.										FEMALES.										Total.										
	Under 5 years.					From 5 to 16.					From 16 to 21.					From 21 to 45.						From 45 to 60.					Upwards of 60.				
	From 5 to 16.	From 16 to 21.	From 21 to 45.	From 45 to 60.	Upwards of 60.	Under 5 years.	From 5 to 16.	From 16 to 21.	From 21 to 45.	From 45 to 60.	Upwards of 60.	From 5 to 16.	From 16 to 21.	From 21 to 45.	From 45 to 60.	Upwards of 60.	From 5 to 16.	From 16 to 21.	From 21 to 45.	From 45 to 60.		Upwards of 60.	From 5 to 16.	From 16 to 21.	From 21 to 45.	From 45 to 60.	Upwards of 60.				
No. 33.	106	166	68	121	48	79	177	73	108	40	36	530	388	814	1002	2	23	21	45	1402	1104	7	16	38	1104	1104					
No. 34.	96	194	84	130	73	61	93	168	97	222	67	64	1	400	1002	2	23	21	45	1402	1104	7	16	38	1104	1104					
No. 35.	57	177	100	146	57	40	80	191	94	141	49	24	2	337	836	5	15	30	30	1195	1195	5	15	30	1195	1195					
No. 36.	103	156	108	152	63	51	96	133	124	143	53	22	1	335	955	15	17	25	25	1290	1290	15	17	25	1290	1290					
No. 37.	102	135	55	211	41	30	97	160	51	190	33	36	1	324	826	4	2	27	27	1150	1150	4	2	27	1150	1150					
No. 45.	122	219	108	185	68	23	72	119	207	49	31	4	30	410	1199	4	2	27	27	1549	1549	4	2	27	1549	1549					
Total.	616	1077	533	1071	354	257	361	1121	558	1071	263	216	4	2441	5594	6	52	71	71	71214	7790	25	25	25	25	25					

THIRD ELECTORAL DISTRICT OF QUEEN'S COUNTY, (continued.)

NUMBER OF TOWNSHIP	MEMBERS OF THE CHURCH OF ENGLAND													Total number of Inhabitants	Population in 1848	Population in 1855	Increase since 1850	Increase since 1856							
	Members of the Church of England	Presbyterian Church of Lower Provinces	Kirk of Scotland	Roman Catholics	Methodists	Baptists	Bible Christians	Quakers	Unitarians	Other Denominations	Religious profession not stated	NATIVES OF													
												England	Scotland	Ireland	British Provinces	Prince Edward Island	Other countries	Country not stated							
No. 33	126	955	986	57	147	6	303	—	—	—	138	59	20	51	950	620	574	1184	1019	1091	103	100			
34	86	307	341	367	281	55	6	—	—	—	76	69	100	13	1139	651	731	1302	1177	1502	103	100			
35	32	21	97	971	45	14	6	—	—	15	6	41	155	13	965	616	579	1195	1103	1194	1	1			
36	23	10	10	1232	9	6	—	—	—	4	32	272	12	908	61	697	583	1290	1190	1126	164	164			
37	52	158	—	905	1	—	—	—	—	21	16	104	22	979	5	580	570	1150	770	933	217	217			
45	52	448	239	643	220	232	—	—	—	344	35	74	147	204	1380	621	778	1669	1162	1300	269	269			
Total	406	507	975	3233	706	344	309	—	—	49	282	300	799	95	6201	31	377	3855	7520	6550	7236	684	100		



THIRD ELECTORAL DISTRICT OF QUEEN'S COUNTY, (continued).

NUMBER OF TOWNSHIP.	No. of persons holding Land of			No. OF ACRES HELD						CROPS RAISED IN 1860								No. of yards of Cloth not filled manufactured last year.	No. of yards of filled Cloth manufactured last year.	Pounds of Cheese made last year.		
	First quality.	Second quality.	Third quality.	In fee simple.	Under Lease or agreement for Lease.	By verbal agreement.	Occupants being neither freeholders nor tenants.	No. of acres of arable Land.	Bushels of Wheat.	Bushels of Barley.	Bushels of Oats.	Bushels of Buckwheat.	Bushels of Potatoes.	Bushels of Turneps.	Pounds of Clovers, &c.	Tons of Hay.	No. of yards of filled Cloth manufactured last year.				No. of yards of Cloth not filled manufactured last year.	Pounds of Cheese made last year.
No. 33.	25	152	15	7723	11,622	724	252	11,844	9172	6226	71,739	577	50,353	35,016	2457	1114	3180	4320	5901			
34.	56	110	55	4513	15,385	278	—	12,245	8479	5973	75,125	555	73,492	14,704	1759	588	4301	629	4204			
35.	12	103	6	609	14,269	31	—	6157	3852	2183	37,526	100	38,659	5690	20	388	1664	3697	3796			
36.	10	74	103	455	12,302	460	658	4382	3840	1543	26,576	667	31,953	1249	86	817	2450	430	430			
37.	3	56	53	10,081	5304	725	1356	4312	4312	2021	26,477	97	41,136	6028	85	761	1586	3828	557			
48.	62	77	50	3354	13,792	482	—	7666	9922	1802	55,817	197	88,024	4650	—	645	2456	5901	2596			
Total.	197	572	314	26,755	72,064	2221	2723	46,596	30,577	19,401	295,260	2203	322,497	65,536	4331	1886	12853	20,620	27,320			

THIRD ELECTORAL DISTRICT OF QUEEN'S COUNTY, (continued).

NUMBER OF TOWNSHIP.	MILLS.													Number of Carriages and Sleighs manufactured last year.														
	Pounds of Butter made last year.	No. of Threshing Machines.	Horses.	Neat Cattle.	Sheep.	Hogs.	Churches.	School-houses.	Brewing and Distilling establishments.	Tanneries.	Pounds of Leather manufactured last year.	Tobacco Manufactories.	Fishing establishments.		Number of barrels of Mackerel cured last year.	Number of barrels of Herrings or Alewives cured last year.	Number of quintals of Codfish or Flake cured last year.	Number of gallons of Fish Oil made last year.	Number of Boats owned for fishing purposes.	Crest Mills.	Carding Mills.	Raw Mills.	Felling and Dressing Mills.	Lime Kilns.	Number of barrels of Lime made last year.	Brick Kilns.	Bricks manufactured last year.	
No. 23.	21,903	47	463	1,449	9,679	655	3	3	1	100			5	51	118	591	175	90	21	3	3	3	1	1,330			127	
34.	30,365	60	540	1479	2840	768	5	7	1	7506			5	27	46	248	149	57	16	1	1	1	1				87	
35.	12,740	16	319	980	1683	600	6	6	1	300				20	60	33	13	4	4	1	1							
36.	4903	4	281	765	1218	535	3	4					8	20	60	33	13	4	4	1	1							
37.	38,837	3	282	964	1490	694	3	5		50			2	75	178	1000	152	66	29	4	4	4	1			5401000	3	
48.	19,930	18	376	1102	3554	467	4	7	2					4	143	359	172	495	213	70	16	5	14	1	4	329	5401000	33
Total.	118197	148	2261	6767	19496	4549	21	34	3	6	7690		4	143	359	172	495	213	70	16	5	14	1	4	329	5401000	33	





FOURTH ELECTORAL DISTRICT OF QUEEN'S COUNTY. (continued).

NUMBER OF TOWNSHIP.	No. of persons holding Land of			No. OF ACRES HELD				CROPS RAISED IN 1860.										No. of yards of Cloth not failed manufactured last year.	Pounds of Cheese made last year.
	First quality.	Second quality.	Third quality.	In fee simple.	Under Lease or agreement for Lease.	By verbal agreement.	Occupants being neither freeholders nor tenants	No of acres of arable Land.	Bushels of Wheat.	Bushels of Barley.	Bushels of Oats.	Bushels of Buckwheat.	Bushels of Potatoes.	Bushels of Turnips.	Pounds of Clover Seed.	Tons of Hay.	No. of yards of failed Cloth manufactured last year.		
No. 49.	70	110	27	6146	9507	1002	157	8945	1874	70,800	537	60,176	977	—	—	951	2157	6993	6993
50.	140	66	96	6717	7444	80	355	5768	4021	67,324	504	74,575	3690	—	—	21,164	3589	5781	4778
57.	148	198	—	19,501	1656	100	—	9959	7269	59,894	863	68,157	768	30	660	3353	9779	2615	—
68.	41	111	37	13,456	1005	200	—	3778	2618	946	24,767	20	27,714	120	—	216	1021	4257	1336
60.	3	40	85	10,496	1207	833	—	3046	1604	15,217	12	13,586	—	—	—	96	1308	2562	730
62.	21	64	75	14,549	—	43	89	4506	3199	1811	23,252	272	17,700	615	13	203	2289	5063	860
Total.	423	627	233	74,895	21,151	2359	601	36,322	30,184	12,696	261,364	2228	261,918	6470	64,3292	13317	37,435	13,128	—

FOURTH ELECTORAL DISTRICT OF QUEEN'S COUNTY. (continued).

No. of Townships	NUMBER OF TOWNSHIP										Total																			
	Pounds of Hutter made last year.	No. of Threshing Machines.	Horses.	Neat Cattle.	Sheep.	Logs.	Churches.	School-houses.	Brewing and Distilling establishments.	Tanneries.		Pounds of Leather manufactured last year.	Tobacco Manufactories.	Fishing establishments.	Number of persons fishing last year.	Number of barrels of Mackerel cured last year.	Number of barrels of Herrings or Allowives cured last year.	Number of quintals of Codfish or Lake cured last year.	Number of gallons of Fish Oil made last year.	Number of boats owned for fishing purposes.	Crest Mills.	Carding Mills.	Saw Mills.	Rolling and Dressing Mills.	Lime Kilns.	Number of barrels of Lime made last year.	Brick Kilns.	Bricks manufactured last year.	Number of Carriages and Sleighs manufactured last year.	
49.	17,208	61	1,297	12,463	2,962	2,639	459	9	1	4,950	5	1	2	51	51	38	69	36	61	1	1	1	1	1	1	1	1	1	1	
50.	13,132	12	409	13,119	2,918	631	30	7	1	10,000	30	5	57	1	1	36	38	55	17	1	1	1	1	1	1	1	1	1	1	
51.	14,671	9	429	608	3,138	959	45	5	—	—	57	1	375	76	35	35	36	36	36	1	1	1	1	1	1	1	1	1	1	
52.	17,208	12	1,297	12,463	2,962	2,639	459	9	1	4,950	5	1	2	51	51	38	69	36	61	1	1	1	1	1	1	1	1	1	1	
53.	14,671	9	429	608	3,138	959	45	5	—	—	57	1	375	76	35	35	36	36	36	1	1	1	1	1	1	1	1	1	1	1
54.	17,208	12	1,297	12,463	2,962	2,639	459	9	1	4,950	5	1	2	51	51	38	69	36	61	1	1	1	1	1	1	1	1	1	1	1
55.	14,671	9	429	608	3,138	959	45	5	—	—	57	1	375	76	35	35	36	36	36	1	1	1	1	1	1	1	1	1	1	1
56.	17,208	12	1,297	12,463	2,962	2,639	459	9	1	4,950	5	1	2	51	51	38	69	36	61	1	1	1	1	1	1	1	1	1	1	1
57.	14,671	9	429	608	3,138	959	45	5	—	—	57	1	375	76	35	35	36	36	36	1	1	1	1	1	1	1	1	1	1	1
58.	17,208	12	1,297	12,463	2,962	2,639	459	9	1	4,950	5	1	2	51	51	38	69	36	61	1	1	1	1	1	1	1	1	1	1	1
59.	14,671	9	429	608	3,138	959	45	5	—	—	57	1	375	76	35	35	36	36	36	1	1	1	1	1	1	1	1	1	1	1
60.	17,208	12	1,297	12,463	2,962	2,639	459	9	1	4,950	5	1	2	51	51	38	69	36	61	1	1	1	1	1	1	1	1	1	1	1
61.	14,671	9	429	608	3,138	959	45	5	—	—	57	1	375	76	35	35	36	36	36	1	1	1	1	1	1	1	1	1	1	1
62.	17,208	12	1,297	12,463	2,962	2,639	459	9	1	4,950	5	1	2	51	51	38	69	36	61	1	1	1	1	1	1	1	1	1	1	1
Total.	66,204	49	17,458	63,811	12,241	3,543	14	35	6	7,070	183	1	1,955	3,063	570	96	13	5	34	1	1	1	1	1	1	1	1	1	1	1

CITY OF CHARLOTTETOWN AND ROYALTY.

MALES.		FEMALES.					Deaf and dumb.	Blind.	No. not vaccinated nor had Small Pox.	Married.	Single.	Losses.	Married last year.	Deaths last year.	Births last year.	Total number in each family, including servants and apprentices.	Males.	Females.
Under 5 years.	From 5 to 16.	From 16 to 21.	From 21 to 45.	From 45 to 60.	Upwards of 60.													
480	906	425	686	340	156	470	9	1505	2061	4615	22	13	86	143	676	1	1	
Under 5 years.	From 5 to 16.	From 16 to 21.	From 21 to 45.	From 45 to 60.	Upwards of 60.	Under 5 years.												
480	906	425	686	340	156	470	9	1505	2061	4615	22	13	86	143	676	1	1	
Under 5 years.	From 5 to 16.	From 16 to 21.	From 21 to 45.	From 45 to 60.	Upwards of 60.	Under 5 years.												

**CITY OF CHARLOTTETOWN AND ROYALTY, (continued.)**

Members of the Church of England.	1440	
Presbyterian Church of Lower Provinces.	331	687
Kirk of Scotland.	687	2560
Roman Catholics.	2560	1330
Methodists.	1330	186
Baptists.	186	112
Bible Christians.	112	—
Quakers.	—	—
Universalists.	2	46
Other Denominations.	23	
Religious profession not stated.	46	
NATIVES OF		
England.	637	523
Scotland.	252	734
Ireland.	734	524
British Provinces.	524	4157
Prince Edward Island.	4157	68
Other countries.	68	54
Country not stated.	54	
Total number of Males.	3223	3483
Total number of Females.	3483	6706
Total number of Inhabitants.	6706	4717
Population in 1848.	4717	6513
Population in 1865.	6513	193
Increase since 1855.	193	



CITY OF CHARLOTTETOWN AND ROYALTY, (continued).

No. of persons holding Land of		No. OF ACRES HELD			No. of acres of arable Land.	CROPS RAISED IN 1880.								No. of yards of fullod Cloth manufactured last year.	No. of yards of Cloth not fullod manufactured last year.	Pounds of Cheese made last year.	
First quality.	Second quality.	Third quality.	In fee simple.	Under Lease or agreement for Lease.		By verbal agreement.	Occupants being neither freeholders nor tenants.	Bushels of Wheat.	Bushels of Barley.	Bushels of Oats.	Bushels of RICKWHEAT.	Bushels of POTATOES.	Bushels of Turnips.				Pounds of Clover Seed.
115	11	5	38244	18804	77	—	4715	7180	20,349	398	21,218	55,516	50	5774	369	636	550

CITY OF CHARLOTTETOWN AND ROYALTY, (continued).

Pounds of Butter made last year.	4100	
No. of Thrashing Machines.	5	
Horses.	415	
Neat Cattle.	661	
Sheep.	705	
Hogs.	455	
Churches.	5	
School-houses.	17	
Brewing and Distilling establishments.	4	
Tanneries.	5	
Pounds of Leather manufactured last year.	571,388	
Tobacco Manufactories.	3	
Fishing establishments.	1	
Number of persons fishing last year.	—	
Number of barrels of Mackerel cured last year.	3000	
Number of barrels of Herrings or Alewives cured last year.	—	
Number of quintals of Codfish or Lake cured last year.	—	
Number of gallons of Fish Oil made last year.	—	
Number of Boats owned for fishing purposes.	3	
MILLS.	Grist Mills.	3
	Carding Mills.	12
	Saw Mills.	22
	Pulling and Dressing Mills.	1
	Lime Kilns.	10
Number of barrels of Lime made last year.	11,950	
Brick Kilns.	—	
Bricks manufactured last year.	—	
Number of Carriages and Sleighs manufactured last year.	370	

**FIRST ELECTORAL DISTRICT OF KING'S COUNTY.**

NUMBER OF TOWNSHIP.	MALES.								FEMALES.								Total.						
	Under 5 years.		From 5 to 16.		From 16 to 21.		From 21 to 45.		From 45 to 60.		From 60 to 75.		From 75 to 90.		From 90 to 100.								
	Under 5 years.	From 5 to 16.	From 16 to 21.	From 21 to 45.	From 45 to 60.	From 60 to 75.	From 75 to 90.	From 90 to 100.	Under 5 years.	From 5 to 16.	From 16 to 21.	From 21 to 45.	From 45 to 60.	From 60 to 75.	From 75 to 90.	From 90 to 100.							
No. 43.	59	117	66	144	40	26	61	169	64	146	39	15	310	278	614	7	14	15	25	592	7	1	
44.	76	133	62	131	47	27	69	131	94	167	46	1	534	317	705	—	10	9	21	1023	—	—	
45.	103	174	83	215	60	45	83	173	96	196	64	26	530	236	1094	—	5	13	30	1324	—	—	
46.	58	120	42	107	40	15	58	88	72	119	35	13	196	221	646	—	5	10	30	767	—	—	
47.	59	152	84	131	75	44	53	128	54	179	65	32	382	350	736	—	27	5	30	1036	—	—	
<b>Total.</b>	<b>355</b>	<b>686</b>	<b>337</b>	<b>751</b>	<b>262</b>	<b>137</b>	<b>324</b>	<b>630</b>	<b>410</b>	<b>807</b>	<b>249</b>	<b>113</b>	<b>1</b>	<b>1952</b>	<b>1386</b>	<b>3695</b>	<b>7</b>	<b>61</b>	<b>52</b>	<b>128</b>	<b>5091</b>	<b>7</b>	<b>1</b>

**FIRST ELECTORAL DISTRICT OF KING'S COUNTY, (continued.)**

NUMBER OF TOWNSHIP.	MEMBERS OF THE CHURCH OF													Total number of Inhabitants.	Total number of Males.	Total number of Females.	Population in 1848.	Population in 1855.	Increase since 1855.				
	England.	Presbyterian Church of Lower Provinces.	Kirk of Scotland.	Roman Catholics.	Methodists.	Baptists.	Bible Christians.	Quakers.	Universalists.	Other Denominations.	Religious profession not stated.	England.	Scotland.							Ireland.	British Provinces.	Prince Edward Island.	Other countries.
No. 43.	31	567	14	686		8	5					6	13	15	35	519	4	5	440	775	567	76	
44.	15	43	6	951		17				15	11	20	66	35	597	503	1	1	527	1605	1001	606	
45.	12	20	6	1220	14					1	5	77	46	62	1133	680	4	19	644	1324	1014	310	
46.	15	9	9	661		73					1	62	32	37	616	383	3	19	382	707	606	101	
47.	4		3	743		297				5	12	4	56	28	965	645	3	11	511	1056	1047	109	
Total.	77	389	32	4151	14	385	5			21	12	27	230	157	159	4427	11	25	2537	5069	4340	4716	383

FIRST ELECTORAL DISTRICT OF KING'S COUNTY, (continued).

NUMBER OF TOWNSHIP.	No. of persons holding Land of			No. OF ACRES HELD						CROPS RAISED IN 1860								No. of yards of Cloth manufactured last year.	No. of yards of full-d Cloth manufactured last year.	Pounds of Cheese made last year.
	First quality.	Second quality.	Third quality.	To fee simple.	Under Lease or agreement for Lease.	By verbal agreement.	Occupants being neither freeholders nor tenants.	No of acres of arable Land.	Bushels of Wheat.	Bushels of Barley.	Bushels of Oats.	Bushels of Ruckwheat.	Bushels of Potatoes.	Bushels of Turneps.	Pounds of Cloven Sheep.	Tons of Hay.				
No. 43,	60	60	—	7279	9990	50	906	3732	2969	5004	25,910	160	32,249	4375	69	300	3108	2095		
44,	76	80	—	6121	3614	50	350	3330	2913	4455	23,436	16	33,347	5872	305	305	2177	1573		
45,	80	79	12	6783	1618	50	537	4591	3675	5795	37,644	7	39,493	2694	5	473	1483	4162	1696	
46,	73	35	7	3864	2085	90	367	2690	2035	2925	19,597	2	23,705	763	6	261	734	3930	1797	
47,	100	50	13	6666	2071	100	1598	5165	5161	5224	44,085	—	45,915	2013	—	615	1002	2655	5495	
Total.	392	313	32	28,093	11,451	610	1083	19,220	16,633	23,936	150,825	157	176,648	15,717	70	1954	4913	20,844	12,649	

First Electoral District of King's County, (continued).

NUMBER OF TOWNSHIP	Pounds of Butter made last year.	No. of Thrashing Machines.	Horses.	Neat Cattle.	Sheep.	Hogs.	Churches.	School-houses.	Brewing and Distilling estab-lishments.	Tanneries.	Pounds of Leather manufac-tured last year.	Tobacco Manufactories.	Fishing establishments.	Number of persons fishing last year.	Number of barrels of Pickled or Cured last year.	Number of quintals of Codfish or Flake cured last year.	Number of gallons of Fish Oil made last year.	Number of Boats owned for fishing purposes.	MILLS.						Tricks manufactured last year.	Number of Carriages and Sleighs manufactured last year.
																			Grain Mills.	Cutting Mills.	Saw Mills.	Fulling and Dressing Mills.	Lime Kilns.	Number of barrels of Lime made last year.		
No. 43.	9153	5	218	741	967	645	1	3	1	1363	3	10	69	56	988	165	16	3	3	1	130	6	6			
44.	5972	7	302	740	991	709	5	5	5	5	49	234	611	820	21	2	3	3	3	1	1	1	1			
45.	9150	9	299	1074	1911	983	1	5	1	75	6	109	1023388	402	3506	103	1	1	1	1	1	1	1			
46.	6370	4	162	616	1587	586	4	1	1	24	51	7	78	763	558	41	3	3	3	1	1	1	1			
47.	13,033	15	336	1327	1991	919	3	5	1	1221	96	27	510	1767	752	62	15	15	15	15	15	15	15			
Total.	46,676	43	1217	4498	7440	3846	7	22	1	2	2659	38	315	439	1673	10,726	5801	243	8	2	13	8	2	19		

SECOND ELECTORAL DISTRICT of KING'S COUNTY.

NUMBER OF TOWNSHIP.	MALES.										FEMALES.										Total number in each family, including servants and up-births last year.	Males.	Females.			
	Under 5 years.					Upwards of 5 years.					Upwards of 60.					Upwards of 60.								Total number in each family, including servants and up-births last year.	Males.	Females.
	From 5 to 10.	From 10 to 21.	From 21 to 45.	From 45 to 60.	Upwards of 60.	Under 5 years.	From 5 to 15.	From 15 to 21.	From 21 to 45.	From 45 to 60.	Upwards of 60.	Upwards of 60.	Upwards of 60.	Upwards of 60.	Upwards of 60.	Upwards of 60.	Upwards of 60.									
No. 38,	66	71	38	124	31	22	44	106	57	119	33	14	2	267	183	542	1	10	9	25	725	706	11	6		
39,	57	14	41	90	37	26	56	96	37	102	25	19	5	251	185	515	6	6	3	22	700	700	11	6		
40,	45	109	50	105	47	24	39	115	17	95	33	11	1	232	176	547	8	3	12	725	725	12	3	12		
41,	71	169	67	156	43	44	73	152	76	165	40	27	1	363	295	779	5	17	23	35	1074	1074	17	3	17	
42,	30	83	62	121	63	21	44	69	40	85	27	25	1	265	131	552	13	3	6	696	696	4	3	6		
56,	69	133	62	83	53	19	50	112	57	106	37	22	1	227	225	575	4	8	14	24	600	600	4	3	4	
Total.	338	570	310	678	271	156	306	670	314	678	195	131	3	1545	1195	3510	13	62	29	122	4705	4705	15	11	15	

SECOND ELECTORAL DISTRICT OF KING'S COUNTY, (continued.)

NUMBER OF TOWNSHIP	Members of the Church of England.	Presbyterian Church of Lower Provinces.	Kirk of Scotland	Roman Catholics	Methodists.	Baptists.	Able Christians.	Quakers.	Unsettled.	Other Denominations.	Religious profession not stated.	NATIVES OF							Total number of Inhabitants.	Population in 1849.	Population in 1855.	Increase since 1855.		
												England.	Scotland.	Ireland.	British Provinces.	Prince Edward Island.	Other countries.	Country not stated.					Total number of Males.	Total number of Females.
No. 38.	51	171	11	492	10	11	—	—	—	—	6	5	19	42	18	635	—	—	352	313	795	483	504	126
39.	—	133	14	551	—	—	—	—	—	—	4	5	9	69	46	961	—	—	356	343	719	440	599	167
40.	37	338	—	336	—	6	5	—	—	—	—	10	10	74	37	583	—	—	369	343	793	455	707	16
41.	12	309	—	738	3	3	—	—	—	—	6	6	143	19	37	366	—	—	371	333	1073	586	979	99
42.	—	12	—	681	—	—	—	—	—	—	4	2	22	32	7	634	—	—	371	319	693	586	598	41
56.	69	251	3	444	17	7	4	—	—	—	6	4	46	28	27	682	—	—	416	354	800	783	788	73
Total.	169	1214	27	3252	30	26	10	—	—	—	6	43	321	265	192	3069	10	104	2439	2295	4734	3883	4008	612



SECOND ELECTORAL DISTRICT OF KING'S COUNTY. (continued).

NUMBER OF TOWNSHIP.	No. of persons holding Land of			No. OF ACRES HELD				CROPS RAISED IN 1890										Pounds of Cheese made last year.	
	First quality.	Second quality.	Third quality.	In fee simple.	Under Lease or agreement for Lease.	By verbal agreement.	Occupants being neither freeholders nor tenants	No. of acres of arable Land.	Bushels of Wheat.	Bushels of Barley.	Bushels of Oats.	Bushels of Buckwheat.	Bushels of Potatoes.	Bushels of Turnips.	Pounds of Clover Seed.	Tons of Hay.	No. of yards of felled Cloth manufactured last year.		No. of yards of Cloth not felled manufactured last year.
No. 38.	65	56	2,136	47	1,661	1	27	2,913	3,451	1,771	20,032	93	35,457	5,417	45	378	1,120	27,953	827
39.	24	72	10,514	61	3,19	100	2,066	3,447	1,763	22,985	127	23,752	2,513	15	246	709	1,851	1,200	1,200
40.	58	51	22,600	610	138	260	3,253	6,542	2,714	26,170	71	30,097	2738	72	363	1,232	2,264	1,664	1,664
41.	10	90	32,082	165	—	—	1,004	4,700	4,353	35,061	193	34,537	15,16	—	—	192	1,134	42,19	1,271
42.	21	64	13,530	165	700	1,800	2,910	2,734	4,572	20,331	37	22,621	160	6	221	669	1,940	3,600	3,600
56.	37	63	10,300	800	560	—	2,846	2,649	2,472	23,495	—	25,968	3872	90	491	817	2,278	2,278	2,278
Total.	210	389	100,514	11,545	11,663	2,227	23,204	22,525	17,675	141,094	511	165,762	16,016	228	1,796	5,294	15,675	11,365	11,365

SECOND ELECTORAL DISTRICT OF KING'S COUNTY. (continued).

NUMBER OF TOWNSHIP.																																				
No. 38.	6632	9	190	636	1057	660	1	1000	3	43	19	133	88	Number of quintals of Godfish or Lake cured last year.	13	25	1	2	1	1	2							24	2							
39.	5457	13	162	556	985	505	1	600	38	7	1020	176	35	8	1	1	2																			
40.	7477	10	192	694	1013	571	1	100	1	15	6	21	31	110	10	8	1	1	2																	
41.	7366	4	243	872	1429	676	1	2012		48	80	379	133	14	1	3																				
42.	9365	6	186	651	1023	473	3	1	1	451	51	31	67	212	198	14	1	1	1	1	1															
56.	8373	17	207	766	944	496	1	244	3	43	207	206	547	215	43	7	2	2																		
Total.	44,652	59	1152	4197	6831	3231	6	4307	7	241	292	1527	1713	694	114	14	2	11																		

### THIRD ELECTORAL DISTRICT OF KING'S COUNTY.

NUMBER OF TOWNSHIP.	MALES												FEMALES												Total.
	Under 5 years.			From 5 to 16.			From 16 to 21.			From 21 to 45.			From 45 to 60.			From 60 to 80.			Total number in each family, including servants and apprentices.	Males.	Females.				
	Under 5 years.	From 5 to 16.	From 16 to 21.	From 21 to 45.	From 45 to 60.	From 60 to 80.	Under 5 years.	From 5 to 16.	From 16 to 21.	From 21 to 45.	From 45 to 60.	From 60 to 80.													
No. 61.	101	161	52	134	40	34	75	156	70	141	46	27	641	295	769	3	18	3				398	1054	-	-
62.	85	136	50	138	40	32	53	113	62	147	45	21	500	297	625	-	16	23	30	922	-	-			
63.	75	137	50	110	35	24	62	110	48	127	29	13	2	306	350	570	-	3	11	21	630	-	-		
64.	58	106	33	79	22	15	54	85	49	81	6	3	278	174	427	-	2	7	21	601	-	-			
65.	56	160	90	144	51	29	52	169	50	145	40	25	413	271	627	-	2	10	56	1095	-	-			
Total.	405	703	275	615	158	131	294	623	209	641	105	96	4	2185	1377	3215	4	37	64	164	4495	-	-		

THIRD ELECTORAL DISTRICT OF KING'S COUNTY, (continued.)

NUMBER OF TOWNSHIP	Members of the Church of England.	Presbyterian Church of Lower Provinces.	Kirk of Scotland.	Roman Catholics.	Methodists.	Baptists.	Bible Christians.	Quakers.	Universals.	Other Denominations.	Religious profession not stated.	NATIVES OF							Total number of Males.	Total number of Females.	Total number of Inhabitants.	Population in 1848.	Population in 1856.	Increase since 1855.
												England.	Scotland.	Ireland.	British Provinces.	Prince Edward Island.	Other countries.	Country not stated.						
No. 51.	38	93	174	547	8	186	34	1	119	123	189	33	781	5	535	519	1054	831	948	106				
52.	23	181	221	310	19	149	19	—	—	13	183	25	31	700	481	922	695	763	150					
53.	67	91	81	460	4	97	12	5	—	17	76	54	81	573	3	451	382	701	110					
54.	13	45	43	474	13	7	4	1	1	5	90	4	21	451	213	601	316	493	181					
55.	23	210	45	681	46	89	53	1	—	17	87	4	24	950	1	560	1098	856	1021	77				
Total.	164	620	567	2472	90	448	112	2	22	52	529	246	190	3438	9	2920	2175	4495	3286	3853	642			

THIRD ELECTORAL DISTRICT OF KING'S COUNTY, (continued).

NUMBER OF TOWNSHIP.	No. of persons holding Land of			No. OF ACRES HELD				CROPS RAISED IN 1860.								No. of yards of Cloth not filled manufactured last year.	No. of yards of filled Cloth manufactured last year.	Tons of Hay.	Pounds of Clover Seed.	Bushels of Turneps.	Bushels of Potatoes.	Bushels of Buckwheat.	Bushels of Oats.	Bushels of Barley.	Bushels of Wheat.	No. of acres of arable Land.	No. of persons holding Land of	First quality.	Second quality.	Third quality.
	First quality.	Second quality.	Third quality.	In fee simple.	Under Lease or agreement for Lease.	By verbal agreement.	Occupants being neither Freeholders nor tenants.	Bushels of Wheat.	Bushels of Barley.	Bushels of Oats.	Bushels of Buckwheat.	Bushels of Potatoes.	Bushels of Turneps.	Pounds of Clover Seed.	Tons of Hay.															
No. 51.	82	65	30	4953	9584	566	78	5955	3675	27991	34,943	365	43,457	1573	213	359	1416	5140	925											
52.	50	96	5	9063	1240	330	4825	4135	3715	2566	23,157	517	38,756	916	175	500	1567	3069	567											
53.	15	80	32	1967	1427	575	6077	2673	2302	1863	17,453	635	29,312	1856	—	193	605	3068	530											
54.	—	86	—	4096	457	200	4684	1750	1072	1379	3534	71	17,412	360	—	101	560	1458	366											
55.	68	53	15	15,452	656	53	405	4350	2784	4530	30,065	192	37,110	639	137	337	1290	4673	1886											
Total.	215	410	82	25,451	13,684	1596	16272	18,203	13,569	132771	115,005	1736	167,077	5724	528	1456	6595	17,319	4196											

**THIRD ELECTORAL DISTRICT OF KING'S COUNTY, (continued).**

No. of TOWNSHIP.	Pounds of Butter made last year.	No. of Threshing Machines.	Horses.	Neat Cattle.	Sheep.	Hogs.	Churches.	School-houses.	Brewing and Distilling establishments.	Tanneries.	Pounds of Leather manufactured last year.	Tobacco Manufactories.	Fishing establishments.	Number of persons fishing last year.	Number of barrels of Mackerel cured last year.	Number of barrels of Herrings or Alewives cured last year.	Number of quintals of Codfish or Hake cured last year.	Number of gallons of Fish Oil made last year.	Number of Boats owned for fishing purposes.	MILLS.					Brick Kilns.	Bricks manufactured last year.	Number of Carriages and Sleighs manufactured last year.	
																				Grain Mills.	Carding Mills.	Saw Mills.	Rolling and Dressing Mills.	Lime Kilns.				
No. 51.	7623	9	255	807	1394	674	-	5	-	1	3	-	-	-	-	-	-	-	-	-	2	1	4	-	-	-	-	
52.	6595	3	104	627	1120	665	9	3	-	-	210	-	-	-	-	-	-	-	-	-	-	-	-	-	-	-	-	
53.	5413	3	144	547	785	481	9	3	-	-	-	-	-	1	2	-	-	38	10	-	-	-	1	1	-	-	-	
54.	2834	1	54	351	575	340	2	2	-	-	-	-	-	27	28	93	-	-	-	-	-	-	-	-	1	341	-	
55.	7666	7	242	978	1475	679	3	6	-	1	350	-	-	25	175	65	-	545	342	96	-	1	1	1	1	1	1	
Total.	30,131	24	925	3314	5449	2739	8	19	2	2	500	-	-	63	303	161	639	380	36	9	4	19	1	1	1	2	341	1

FOURTH ELECTORAL DISTRICT OF KING'S COUNTY.

NUMBER OF TOWNSHIP.	MALES.						FEMALES.						Blind.	Deaf and dumb.	No. not vaccinated nor had Small Pox.	Married.	Single.	Iraane.	Married last year.	Deaths last year.	Births last year.	Total number in each family, including servants and apprentices.	Sexes.	
	MALES.			FEMALES.			MALES.			FEMALES.													Males.	Females.
	Under 6 years.	From 6 to 16.	From 16 to 21.	From 21 to 45.	From 45 to 60.	Upwards of 60.	Under 6 years.	From 6 to 16.	From 16 to 21.	From 21 to 45.	From 45 to 60.	Upwards of 60.												
No. 59.	125	225	66	160	91	30	137	154	81	152	46	27	758	386	968	1	7	6	41	1354	4	3		
61.	76	155	48	95	43	30	86	146	67	117	31	16	457	253	647	—	13	23	30	910	—	3		
63.	53	105	34	103	25	15	65	95	50	100	25	12	303	190	510	—	2	17	16	680	—	—		
64.	117	231	70	174	66	39	106	215	95	196	54	34	858	444	985	1	19	24	50	1359	—	—		
66.	30	48	35	66	17	12	41	59	32	51	16	9	250	110	296	3	3	1	30	36	—	—		
Total.	406	764	243	595	241	126	435	702	325	648	172	95	2	1358	3376	5	44	71	1157	4759	7	6		

FOURTH ELECTORAL DISTRICT OF KING'S COUNTY, (continued.)

NUMBER OF TOWNSHIP.	MEMBERS OF THE CHURCH OF ENGLAND.										NATIVES OF										Total number of Inhabitants.	Population in 1848.	Population in 1855.	Increase since 1855.
	Members of the Church of England.	Presbyterian Church of Lower Provinces.	Kirk of Scotland.	Roman Catholics.	Methodists.	Baptists.	Bible Christians.	Quakers.	Universalists.	Other Denominations.	Religious profession not stated.	England.	Scotland.	Ireland.	British Provinces.	Prince Edward Island.	Other countries.	Country not stated.	Total number of Males.	Total number of Females.				
No. 59.	57	765	172	56	77	115	65	12	1	1	21	369	5	23	941	2	2	701	660	1361	858	1057	204	
61.	26	163	118	468	14	125	2	2	14	119	95	38	642	2	642	2	—	447	468	910	492	642	204	
63.	18	361	171	139	1	4	—	—	9	75	23	76	503	8	503	8	—	343	353	686	409	615	81	
64.	44	497	329	35	136	22	307	4	10	16	59	126	9	107	1018	3	47	702	697	1359	473	1285	114	
66.	—	66	37	299	—	12	—	—	—	—	—	37	55	—	269	1	3	195	205	406	356	355	69	
Total.	139	1554	826	1017	228	155	501	16	13	16	133	729	216	245	3273	9	55	2981	2281	4772	3345	3637	835	



FOURTH ELECTORAL DISTRICT OF KING'S COUNTY. (continued).

NUMBER OF TOWNSHIP.	No. of persons holding Land of			No. of ACRES HELD				CROPS RAISED IN 1860.								No. of yards of full-dressed Cloth manufactured last year.	No. of yards of Cloth not full-dressed manufactured last year.	Pounds of Cheese made last year.
	First quality.	Second quality.	Third quality.	In fee simple.	Under Lease or agreement for Lease.	By verbal agreement.	Occupants being neither freeholders nor tenants.	No. of acres of arable Land.	Bushels of Wheat.	Bushels of Barley.	Bushels of Oats.	Bushels of Buckwheat.	Bushels of Potatoes.	Bushels of Turnips.	Pounds of Clovers Seed.			
No. 59.	6	177	17	7253	9210	200	4453	4162	3252	30,091	452	30,436	2412	162	266	1206	6212	752
60.	2	26	114	900	7930	2408	1200	1867	2159	10,655	606	20,928	1648	78	96	435	2296	604
61.	5	34	62	1670	5092	246	2214	2119	3613	13,163	354	23,065	640	—	134	355	2941	594
62.	21	95	82	3647	3659	1222	4791	4576	5112	19,443	615	22,514	590	—	366	1553	5541	445
63.	16	36	12	1517	—	—	2172	779	1285	15,655	80	16,222	900	—	110	623	1459	63
Total.	50	306	257	16,047	24,306	5690	15,677	13,602	15,353	89,597	2107	126,223	5450	240	993	4107	18,425	2757

FOURTH ELECTORAL DISTRICT OF KING'S COUNTY. (continued).

NUMBER OF TOWNSHIP.	MILLS.																										
	Pounds of Butter made last year.	No. of Thrashing Machines.	Horses.	Neat Cattle.	Sheep.	Hogs.	Churches.	School-houses.	Brewing and Distilling establishments.	Tanneries.	Pounds of Leather manufactured last year.	Factories, Manufactories, and other establishments.	Number of persons having last year.	Number of barrels of Stacker cured last year.	Number of barrels of Herrings or Alewives cured last year.	Number of quintals of Codfish of Lake cured last year.	Number of gallons of Fish Oil made last year.	Number of boats owned for fishing purposes.	Grist Mills.	Carding Mills.	Saw Mills.	Felling and Dressing Mills.	Lime Kilns.	Number of barrels of Lime made last year.	Brick Kilns.	Bricks manufactured last year.	Number of Carriages and Sleighs manufactured last year.
No. 59.	7115	8	255	686	1699	699	3	6	2	159	6	1	6	59	160	630	620	9	3	1	5	5	5	690			
61.	4381	3	118	516	899	484	3	3	1	66	1	1	27	10	22	150	650	61	3	1	4	1					
63.	4301	3	127	472	791	360	3	2	1	197	1	1	36	35	263	1951	17	1	1	1	1	1					
64.	6408	17	231	601	1764	641	7	1	1	206	6	113	113	47	472	377	1521	111	3	3	3	1					
66.	1084	5	91	317	612	251	1	1	1	68	1	1	1	1	1	1	1	1	1	1	1	1					
Total.	22 636	31	543	2291	5678	2311	16	30	—	3	3715	8	301	114	888	3336	22951	153	9	2	14	6	6	820			

GEORGETOWN, RESERVED LANDS AND ROYALTY.

MALES.		FEMALES.							Deaf and dumb.	Blind.	No. not vaccinated nor had Small Pox.	Married.	Single.	Inano.	Married last year.	Deaths last year.	Births last year.	Total number in each family, including servants and apprentices.	Indian.			
From 5 to 16.	From 16 to 21.	From 21 to 45.	From 45 to 60.	From 6 to 16.	From 16 to 21.	From 21 to 45.	From 45 to 60.	Upwards of 60.											Males.	Females.		
83	90	125	29	30	62	112	68	116	43	15	1	—	226	220	611	—	9	16	27	603	—	—



**GEORGETOWN, RESERVED LANDS AND ROYALTY, (continued).**

No. of persons holding Land of	No. OF ACRES HELD			No of acres of arable Land	CROPS RAISED IN 1860.								No. of yards of filled Cloth manufactured last year.	No. of yards of Cloth not filled manufactured last year.	Pounds of Cheese made last year.			
	In fee simple.	Under Lease or agreement for Lease.	By verbal agreement.		Occupants being neither freeholders nor tenants	Bushels of Wheat.	Bushels of Barley.	Bushels of Oats.	Bushels of Beckwheat.	Bushels of Potatoes.	Bushels of Turneps.	Pounds of Cloven Sheep.				Tons of Hay.		
40	51	5	3826	606	21	—	1488	1334	1136	6082	92	15,521	1289	—	122	635	1736	370

GEORGETOWN, RESERVED LANDS AND ROYALTY, (continued).

2203	Pounds of Butter made last year.	4	
4	No. of Thrashing Machines.	97	
97	Horses.	274	
	Neat Cattle.	551	
	Swine.	186	
	Hogs.	4	
	Churches.	3	
	School-houses.		
	Brewing and Distilling establishments.	4	
	Tanneries.	10500	
	Pounds of leather manufactured last year.		
	Tobacco Manufacturers.		
	Fishing establishments.	9	41
	Number of persons fishing last year.		
	Number of barrels of Shad cured last year.	301	309
	Number of barrels of Herrings cured last year.		
	Number of quirts of Codfish or Hahn cured last year.	786	23
	Number of gallons of Fish Oil made last year.		
	Number of Boats owned for fishing purposes.	1	
	First Mills.		
	Carding Mills.		
	Saw Mills.		
	Rolling and Pressing Mills.		
	Lime Kilns.	1	250
	Number of barrels of Lime made last year.		
	Brick Kilns.		
	Bricks manufactured last year.		
	Number of Carriages and Bleighs manufactured last year.	35	

### Abstract of Returns of Tenures of

No.	NUMBER OF TOWNSHIP.	NUMBER OF PERSONS HOLDING.				No. OF TERMS OF LEASE OR AGREEMENT.			RENT PER ACRE STERLING.	RENT PER ACRE CURRENCY.	RENT PER ACRE.							
		In fee simple.	Under Lease or agreement for Lease.	By verbal agreement.	Occupants being neither freeholders nor tenants for 999 years.	From 100 to 999 years.	50 years and under 100.	30 years and under 50.	Under 30 years.	Sixpence and under.	One shilling and above sixpence.	Two shillings and above one shilling.	Sixpence and under.	One shilling and above sixpence.	Two shillings and above one shilling.	Over two shillings and not above 0s.	Over three shillings.	
																		STERLING.
1.		3	192	31	31				24									
2.		1	114	8	14													
3.		68	32	1	37				13	9								
4.		3	87	16	1					10	63						13	
5.		1	74	11	2						74							
6.		2	42	14	2						42							
7.		46	51	3	1						46							
8.		59	6	5	14						6			3				
9.		3	26	10	5		10				16			26				
10.		2	21	1	1						21				21			
11.		70	3	3	1						3				3			
12.		19	33	4	1						33							
13.		37	68	14	13			24		7	44				40		3	
14.		74	53	22	6						53							
15.		159	2	33	42						2							
16.		16	107	6	7		50			1	107							
17.		142	30	1	3			11			2				10		26	
18.		96	69	30	1						58			2				
19.		48	135	4	2						105				30			
20.		31	149	1	1		50		1		149							
21.		59	171	1	7						171							
22.		13	234	1	15		217				234							
23.		62	213	1	1		63	80			185				56		2	
24.		90	182	41	13		160	24			182							
25.		121	18	4	1		13											
26.		54	91	14	10		88				91							
27.		48	138	13	25		138				67			5	60			
28.		108	114	1	1		114			42	59							
29.		3	194	34	1		188	6			188			6				
30.		43	112	7	66		110				62						2	
31.		96	113	4	5		35	55		34	23				73		2	
32.		84	75	1	7		75											
33.		69	128	10	4		128				125			3			13	
34.		52	176	9	1		176			9	164				75		3	
35.		8	161	3	1		107	54							51	107	3	
36.		5	172	3	8		121	51							117	49	6	
37.		82	65	8	20		60								65			
38.		161	27	1	3		25								23			
Forward,		1963	3701	377	368	2655	595	82	3	70	79	2571	103	10	506	221	4	68

NUM

1.																		
2.																		
3.																		
4.																		
5.																		
6.																		
7.																		
8.																		
9.																		
10.																		
11.																		
12.																		
13.																		
14.																		
15.																		
16.																		
17.																		
18.																		
19.																		
20.																		
21.																		
22.																		
23.																		
24.																		
25.																		
26.																		
27.																		
28.																		
29.																		
30.																		
31.																		
32.																		
33.																		
34.																		
35.																		
36.																		
37.																		
38.																		

Total  
Change  
Print  
Total  
Return  
Incr  
Dec

ures of

Lands, Rents, &c., P. E. Island.—1861.

ACRE RENT PER CY. ACRE.	PER ACRE.	NUMBER OF TOWNSHIP.	NUMBER OF PERSONS HOLDING				No. of TERMS OF LEASE OR AGREEMENT.			RENT PER ACRE IN STERLING.		RENT PER ACRE IN CURRENCY.		PER ACRE.						
			In fee simple.	Under Lease or agreement for Lease.	By verbal agreement.	Occupants being neither freeholders nor tenants for 999 years.	From 100 to 999 years.	50 years and under 100	30 years and under 50.	Under 30 years.	Sixpence and under.	One shilling and above sixpence.	Two shillings and above one shilling.		Sixpence and under.	One shilling and above sixpence.	Two shillings and above one shilling.			
		Forward,	1963	3701	377	368	2655	595												
		No. 39,	102	10	1	1	10													
		40,	97	102	4	5	9	4												
		41,	112	1			4													
		42,	66		10	21														
		43,	97	32	1	2	30													
		44,	104	66	1	6	66													
		45,	86	31	2	75	16													
		46,	49	31	5	39	31													
		47,	121	22	2	21	22													
		48,	29	156		9	156													
		49,	92	105	3	3	105													
		50,	109	121	4	7	121													
		51,	49	121	3	1	121													
		52,	79	17	3	59	17													
		53,	23	15	6	22	13													
		54,	33	6	5	62														
		55,	135	13	6	7	13													
		56,	22	92	7	7	51													
		57,	251	29	1		16													
		58,	179	14	4		14													
		59,	82	120	3	4	120													
		60,	113	17	16		1													
		61,	14	92	33	11	92													
		62,	116		2	1														
		63,	27	69	4	11	63													
		64,	58	107	22	27	107													
		65,	52	206	2	5	209													
		66,	13	11		50														
		67,	81	69	17	1	69													
		Total Townships,	4421	5282	673	870	4431	508	115	52	76	81	3432	575	12	650	388	99	95	
		Charlottetown and Royalty,	77	44	2															42
		Georgetown and Royalty,	77	17	2		6													3
		Princentown and Royalty,	51	14			10													3
		Total P. E. Island,	4626	5377	577	879	4450	508	115	52	135	81	3332	580	12	651	398	99	143	
		Retros 1855,	3241	4820	665	654	3718	412	415	77	116	113	3251	424	81	685	447	31	185	
		Increase,	1385	557		225	732	136			19	81	156							65
		Decrease,			88				300	25		32			72	34	39			78



**GRAND TOTAL.—ABSTRACT OF POPULATION RETURNS OF P. E. ISLAND, 1861.**

MALES		FEMALES		INDIANS	
Under 5 years	11,740	From 6 to 10	11,740	Males	160
From 10 to 21	4981	From 10 to 21	4981	Females	146
From 21 to 45	11,144	From 21 to 45	11,144	Members of the Church of England	7285
From 45 to 60	3075	From 45 to 60	3075	Presbyterian Church of Lower Provinces	15,691
Upwards of 60	2447	Upwards of 60	2447	Kirk of Scotland	10,271
Under 5 years	6803	Under 5 years	6803	Roman Catholics	35,882
From 5 to 16	11,136	From 5 to 16	11,136	Methodists	5804
From 16 to 21	4197	From 16 to 21	4197	Baptists	3130
From 21 to 45	17,773	From 21 to 45	17,773	Hible Christians	2061
From 45 to 60	3219	From 45 to 60	3219	Quakers	—
Upwards of 60	1891	Upwards of 60	1891	Unitarians	41
Deaf and dumb	188	Deaf and dumb	188	Religious profession not stated	206
Blind	43	Blind	43	Other denominations	413
Na. not vaccinated nor hind Small Pox.	37,980	Na. not vaccinated nor hind Small Pox.	37,980	Unmarried	41
Married	22,818	Married	22,818	Quakers	—
Single	57,294	Single	57,294	Other countries	364
Female	148	Female	148	Prince Edward Island	62,546
Married last year	685	Married last year	685	British Provinces	2764
Deaths last year	935	Deaths last year	935	Ireland	4971
Births last year	2320	Births last year	2320	Scotland	5663
Total number	60,552	Total number	60,552	England	2500
NATIVES OF		NATIVES OF		NATIVES OF	
England	2500	England	2500	England	2500
Scotland	5663	Scotland	5663	Scotland	5663
Ireland	4971	Ireland	4971	Ireland	4971
British Provinces	2764	British Provinces	2764	British Provinces	2764
Prince Edward Island	62,546	Prince Edward Island	62,546	Prince Edward Island	62,546
Other countries	364	Other countries	364	Other countries	364
Country not stated	707	Country not stated	707	Country not stated	707
Total number of Males	40,880	Total number of Males	40,880	Total number of Males	40,880
Total number of Females	39,977	Total number of Females	39,977	Total number of Females	39,977
Total number of Inhabitants in 1861	80,857	Total number of Inhabitants in 1861	80,857	Total number of Inhabitants in 1861	80,857
Population in 1848	62,728	Population in 1848	62,728	Population in 1848	62,728
Population in 1856	71,996	Population in 1856	71,996	Population in 1856	71,996
Increase since 1855	9068	Increase since 1855	9068	Increase since 1855	9068
Decrease in some Districts since 1865	247	Decrease in some Districts since 1865	247	Decrease in some Districts since 1865	247

1857 23,266  
 1858 22,292  
 1859 22,496  
 1860 22,496  
 1861 22,496  
 1862 22,496  
 1863 22,496  
 1864 22,496  
 1865 22,496  
 1866 22,496  
 1867 22,496  
 1868 22,496  
 1869 22,496  
 1870 22,496  
 1871 22,496  
 1872 22,496  
 1873 22,496  
 1874 22,496  
 1875 22,496  
 1876 22,496  
 1877 22,496  
 1878 22,496  
 1879 22,496  
 1880 22,496  
 1881 22,496  
 1882 22,496  
 1883 22,496  
 1884 22,496  
 1885 22,496  
 1886 22,496  
 1887 22,496  
 1888 22,496  
 1889 22,496  
 1890 22,496  
 1891 22,496  
 1892 22,496  
 1893 22,496  
 1894 22,496  
 1895 22,496  
 1896 22,496  
 1897 22,496  
 1898 22,496  
 1899 22,496  
 1900 22,496  
 1901 22,496  
 1902 22,496  
 1903 22,496  
 1904 22,496  
 1905 22,496  
 1906 22,496  
 1907 22,496  
 1908 22,496  
 1909 22,496  
 1910 22,496  
 1911 22,496  
 1912 22,496  
 1913 22,496  
 1914 22,496  
 1915 22,496  
 1916 22,496  
 1917 22,496  
 1918 22,496  
 1919 22,496  
 1920 22,496  
 1921 22,496  
 1922 22,496  
 1923 22,496  
 1924 22,496  
 1925 22,496  
 1926 22,496  
 1927 22,496  
 1928 22,496  
 1929 22,496  
 1930 22,496  
 1931 22,496  
 1932 22,496  
 1933 22,496  
 1934 22,496  
 1935 22,496  
 1936 22,496  
 1937 22,496  
 1938 22,496  
 1939 22,496  
 1940 22,496  
 1941 22,496  
 1942 22,496  
 1943 22,496  
 1944 22,496  
 1945 22,496  
 1946 22,496  
 1947 22,496  
 1948 22,496  
 1949 22,496  
 1950 22,496  
 1951 22,496  
 1952 22,496  
 1953 22,496  
 1954 22,496  
 1955 22,496  
 1956 22,496  
 1957 22,496  
 1958 22,496  
 1959 22,496  
 1960 22,496  
 1961 22,496  
 1962 22,496  
 1963 22,496  
 1964 22,496  
 1965 22,496  
 1966 22,496  
 1967 22,496  
 1968 22,496  
 1969 22,496  
 1970 22,496  
 1971 22,496  
 1972 22,496  
 1973 22,496  
 1974 22,496  
 1975 22,496  
 1976 22,496  
 1977 22,496  
 1978 22,496  
 1979 22,496  
 1980 22,496  
 1981 22,496  
 1982 22,496  
 1983 22,496  
 1984 22,496  
 1985 22,496  
 1986 22,496  
 1987 22,496  
 1988 22,496  
 1989 22,496  
 1990 22,496  
 1991 22,496  
 1992 22,496  
 1993 22,496  
 1994 22,496  
 1995 22,496  
 1996 22,496  
 1997 22,496  
 1998 22,496  
 1999 22,496  
 2000 22,496

GRAND TOTAL.—ABSTRACT OF STATISTICAL RETURNS OF P. E. ISLAND, 1861.

No. of persons held, being amount held of	4073	First quality.
	6180	Second quality.
	1488	Third quality.
	466,4424	In fee simple.
No. of ACRES HELD	407,169	Under Lease or agreement for Lease.
	38,440	By verbal agreement.
	64,636	Occupants being neither freeholders nor tenants.
CROPS RAISED IN 1860.	308,1274	No. of acres of arable land.
	346,125	Bushels of Wheat.
	224,1824	Bushels of Barley.
	2,218,678	Bushels of Oats.
	50,137	Bushels of Buckwheat.
	2,972,326	Bushels of Potatoes.
	318,784	Bushels of Turnips.
	19,307	Pounds of Clover Seed.
	31,0884	Tons of Hay.
	122,940	No. of yards of full-d Cloth manufactured last year.
303,6764	No. of yards of Cloth not full-d manufactured last year.	
109,2334	Pounds of Cheese made last year.	
711,486	Pounds of Butter made last year.	
866	No. of Thrashing Machines.	
18,765	Horses.	
60,012	Neat Cattle.	
107,245	Sheep.	
71,636	Hogs.	
179	Churches.	
302	School-houses.	
30	Brewing and Distilling establishments.	
55	Tanneries.	
143,803	Pounds of Leather manufactured last year.	
3	Tobacco Manufactories.	
89	Fishing Establishments.	
2318	No. of persons fishing last year.	
7163	No. of barrels of Mackerel cured last year.	
22,416	Number of barrels of Herrings or Alewives cured last year.	
39,756	Number of quintals of Codfish or Lake-wives cured last year.	
17,6094	Number of gallons of Fish Oil made last year.	
1239	Number of Boats owned for fishing purposes.	
MILLS.	141	Grist Mills.
	46	Carding Mills.
	176	Saw Mills.
	9	Rolling and Pressing Mills.
	48	Lime Kilns.
	22,821	No. of barrels of Lime made last year.
9	Brick Kilns.	
1,391,000	Bricks manufactured last year.	
1151	No. of Carriages and Sleighs manufactured last year.	

## ABSTRACT OF GENERAL REMARKS,

APPENDED BY THE ENUMERATORS TO THE FOREGOING RETURNS.

### LOT OR TOWNSHIP No. 1.

The Cunard Estate on this Lot is a light soil, but when well cultivated, very productive in moist seasons. Palmers' part of this Township is a heavy clay bottom, good for grass, and very productive; and a fishing sea board not surpassed in the Gulf. The great drawbacks on the trade of this Lot are—the want of a harbor—of a Light-house on North Cape—and the operation of the Alewives' Act, which Act prevents the fishermen from getting their bait, and benefits those only who have the ownership of ponds. The Alewives have regularly decreased since the Act was put in force. The markets most resorted to by the inhabitants are Tignish, Nail Pond and Sencow Pond. The roads are generally good; the bridges decidedly bad. The trade of this Township will not now appear, as the exports are represented at Cascumpec, as we have no Custom-house. Fish represented as exported from Cascumpec were cured at Tuwaship One, and cleared only from the former Custom-House.

DAVID PETRAE.

### LOT 2.

The land on Lot Two is poor, being mostly second and third quality. The roads on the East side of the Lot are good, but on the West side, bad. The markets mostly resorted to by the inhabitants of this Township are Cascumpec and Tignish,—Casumpec being about ten miles distant; but the people are so poor that they have scarcely any surplus produce to take to market. The want of a harbor is very much felt by the inhabitants of this Township.

RICHARD DAWSON.

### LOT 3.

The land on Lot Three is in general good; at the West end (Miminish) the land is very good; but the people complain of the roads, for which I think they have good reason; they are almost impassable for a carriage, at present. The people of Miminish are very anxious to have a road opened through the centre line of Lot Three, which would be very little more than half the distance to Cascumpec, which is the general market place. On the East end of the Lot the roads are pretty good. Both ends of the Lot possess water communications; and the Kildare River, which is navigable for small boats only, runs up into the middle of it. The mouth of the river is filled up by a muscle bed, the clearing out thereof, to permit small vessels to ascend, would be a great benefit to the inhabitants.

JAMES SIMPSON.

### LOT 4.

The whole of this Township may be classed as second quality land, there being only a few small spots of first quality; there are about 1000 acres of barrens, and a small portion of swamp.

It being impossible in the space allowed in the columns to describe properly the tenures of lands in and about the Cascumpec Cross Roads, owing to the difference of size of lots; the front lots of one acre each being let for the sum of ten shillings sterling for the first ten years, and twenty shillings sterling for the residue of the term of 999 years; these lots are designated in the margin by 1.

The thirteen acre lots are let for the term of 999 years, at ten shillings sterling for the first ten years, and sixty shillings sterling for the residue of the term, and marked in the margin O. There is one farm of 100 acres at 1s. British sterling per acre, designated \*. Also a Mill site on the West shore at £5 for the first ten years; five years £10; next five years £15; and the residue of the term of 999 years £20. The whole of the rent on this Township (4) is sterling, except two farms.

It has also been impossible to give the exact dates at which full rent commences on several of the farms, in many cases owing to the farms changing occupants,—the leases being held by other parties as security; there are also many persons who have not yet taken their leases.

The potato crop last year was a failure, compared with that of the previous year. Clover seed has also been a failure; on account of the scarcity of hay, very little was sowed,—last summer being very dry.

With regard to the quantity of butter made, not one farmer knew the quantity consumed by his family, and could only give account of the sales; the same remark will apply to the quantity of cheese made.

The road from the Western road to Campbellton, from the head of the New Langholm or Duck Settlement, which was formerly opened by the Proprietor, is now almost impassable, even for a person on foot; having walked through that way to the back settlers, I can testify to this from actual experience. The Lot 7 Road by Campbell's Cross is in a bad state for wheeled carriages, being much cut up by frost, &c., &c. The road from Campbellton to the head of Duck Settlement would be a great convenience to the inhabitants of the West shore, including the rear of Lots 3, 4, 5, 7 and 8, as a short road to Cascumpec harbor would consequently open a port to them for either sale or shipment; at present they have to run the risk of shipping in the open straits, with scows, &c., or take their produce, fish, &c., in open boats to Richibucto, N. B., which they barter for other necessaries.

JOHN D. WOODMAN.

ABSTRACT OF GENERAL REMARKS.

Lot 5.—No remarks.  
Lot 6.—No remarks.

LOT 7.

The land on this Township is, in general, of the best quality; there are about 500 acres, perhaps, of what is called "barrens" on the whole Township; but it is useful for pasture. The main road through this Township is good, but some bridges are falling fast into decay, although several sums of money have been laid out on them; but the most important parts have not been replaced. Our markets are inconvenient, as we have no harbor, but an iron bound shore, which makes the shipping of produce always a risk, and very much lessens the value of our produce; while oats were selling at harbors for 2s. 3d. to 2s. 6d. per bushel, through the winter, the highest price we could get was 2s. per bushel. Richibucto is our nearest market but it is always attended with risk and expense, as the inhabitants generally go in small boats, and not unfrequently lose much time, notwithstanding I think it is the market most resorted to. Richibucto is about twenty-four miles distant from Cape Wolfe.

RICHARD LIOSTONZ.

LOT 8.

Land Assessment is paid at present for about ten thousand acres of land on Lot Eight. Of this quantity, which is of the best or first quality, in general, there are but 2253 acres of arable land,—a small amount, when we consider that the inhabitants have been residents for ten to thirty years on it; the reason of this is, that we have no harbor or safe place of landing, the nearest harbor being Cascumpec or Summerside, a distance of thirty to forty-five miles. The roads also are very inferior; so much so, that the profits accruing from surplus produce taken to market is lost in the time spent and expense incurred in transportation. The markets to which the people of this lot resort are Cascumpec and Summerside; and in the neighboring Province, Shediac, Richibucto and Miramichi. A resort to these markets takes away, of course, the business that might be done among ourselves, stops the circulation of money, and of necessity makes us a poor people; such, for example, is our state and condition, that when a merchant brings goods to sell, the common prices are as follows: when tea is selling at any of the above markets at 2s. 3d. to 2s. 9d., it is here 5s. per lb.; when molasses is at 1s. 6d. to 2s., it is sold here at 4s. to 5s. per gallon; cottons, prints, and other household things, all in the same proportion, and on the other hand, when the above markets are giving high prices for grain, this advantage is here seldom to be obtained, for want of road and water communication.

The people of this and the adjoining Lots petitioned the Legislature for a grant to build a wharf at the West Point; should it be built there, it would be a direct benefit not only to Lot 8, but to other Lots, such as Lots 4, 6, 7, 8, 9 and 10.

A steamer calling at Cascumpec is no direct benefit to the people of these Lots; but were a wharf built here, it would be a direct benefit not only to the above Lots, but to Cascumpec. There are but three Schools on this Township,—two of them but

seldom in operation, teachers being disinclined to come to the place.

ROBERT MACDONALD.

LOT 9.

The quality of land in general on this Township is very bad. I would safely say that there are not, according to my knowledge, more than about 4000 acres of good land—that is, of first quality—on Lot 9 altogether, and a large quantity of it is nothing but barrens.

Secondly, with regard to advantages: the only advantage here is, that it is a good place for herring fishing in the spring; but there are many disadvantages on account of roads. There is no market within seventeen miles—at Cascumpec Cross Roads,—and then, I believe, but once a year, in October, when a man can scarcely travel these bad roads.

Thirdly, there is no Post Office nearer than Mr. James Kuley's, Lot 7,—a distance of about eighteen miles from Lot 9, where letters may sometimes remain for four or five months, and perhaps be returned. I witnessed a case of this kind not many days since.

JOHN MACDONALD.

Lot 10.—No remarks.

LOT 11.

The quality of land on this Township is in some parts, very good, and in other parts very bad. A considerable quantity of it is not fit for cultivation; I think nearly half of the Township is bad land. With regard to its road communications, they are very good; when a bridge—which is now commenced—will be built over Lot 10 River, they will be much better.

The water communications are only middling. The water for the most part is shallow, and will not admit a vessel of any burthen up any of the rivers, except Foxley River, up which some vessels ascend, and take in produce at the Canadian River Bridge, on Lot 11. Port Hill and Cascumpec are the nearest markets, except when a vessel comes to the Canadian River Bridge on purpose to take in produce for a merchant doing business on the Lot. The land on this Lot is all Government land excepting 100 acres of rented land.

JOSEPH MURPHY.

Lot 12.—No remarks.

Lot 13.—No remarks.

LOT 14.

Although no pains have been spared to render the returns intelligible, and duly fill up the columns containing the landed property, I regret to have to state that there are some heads of families who can give no information respecting their leaseholds, save that they pay rent to the Hon. James Yeo, but know nothing about their leases: others call themselves leaseholders, but pay no rent. It will be seen that only the number of acres in farms of this description has been returned; being unable to ascertain the conditions upon which they are held.

The land on this Township, generally, is of second quality, but when well cultivated, yields good crops. Freeholders are mostly independent; but the inconvenience of obtaining a market for their surplus

ABSTRACT OF GENERAL REMARKS.

produce, tends to retard their prosperity. Tenants complain loudly of the rental system; some few among them are independent; but too many are needy, particularly the French settlers located on the Western section of the Lot.

The wilderness land is of very inferior quality. Roads and bridges are generally kept in pretty fair order; but it is to be regretted that we have no wharves for shipping purposes, as the Eastern section especially commands excellent water privileges. The markets most resorted to are St. Eleanor's and Summerside,—distant from twelve to eighteen miles.

RODERICK MCINTYRE.

LOT 15.

Land about second quality. Great disadvantages from the want of roads. Water extends the length of the Township. Summerside is the nearest market,—distant from 15 to 20 miles.

HUGH GAMBLE.

LOT 16.

The Eastern part of this Lot is about eight miles from Summerside, whither the inhabitants generally take their grain to market. The main road leads through the Lot to that place, and is generally in a good state for that purpose. The Western part of the Lot is twelve to fourteen miles from Summerside, and produce has to be carted by the main Western road. This Township is also bounded Easterly and North by Richmond Bay, where grain is occasionally shipped off. This bay extends some distance up, affording an opportunity of water communication occasionally. The land in general is low, swampy and barren; the people generally poor.

JAMES LYLE.

LOT 17.

The land in general is of good quality. This Township is pretty well supplied with roads, and the Southern boundary fronts on water the whole length; the Northern part also for several miles fronts on, and has communication with, Richmond Bay. St. Eleanor's and Summerside are the principal markets; extreme distance to the former place, eight and a half miles; to the latter, eleven miles.

WILLIAM BEARISTO.

LOT 18.

The quality of land on this Township is generally good. The advantages in regard to roads and bridges and water communication are good. The markets resorted to are Summerside and Princetown.

STEPHEN MACLELLAN.

LOT 19.

Land on this Township may be considered a light loam of medium quality, which, if properly manured, would yield good returns to the farmer in the root crops, barley and oats; but it is not good for wheat or hay. Farmers having shore fronts have the privilege of obtaining the necessary ingredients for manuring, with but little expense; but those in the rear, in the absence of peat or bog mud,—of which this Lot has not much—have to pay dearly enough

for it, if they get it at all. Neither is there much wood on the Lot; scarcely enough for common fuel, building and fences, to say nothing of burning ashes to enrich the land.

The Township is pleasantly situated, well intersected by roads, which if in good repair, would compete fairly with any on the Island. As to sea-bay,—with the small exception of the produce exported from Margate,—all goes from Summerside, possessing as it does the best harbor for shipping on the end of the island, and is within reach of all residing on the Lot; the greatest distance being from two to ten miles.

ARCHIBALD TOWNSEND.

LOT 20.

The land on this Township would, on an average, come up to second quality; the interior being very stony and hard to cultivate, and requiring more manure than the occupants can procure, in order to raise anything like an average crop, particularly of hay; and the portion fronting on the shore is of a light sandy nature, requiring heavy manuring to keep it in good heart.

The Township is pretty well intersected by roads; and although the Southwest River runs across the Lot at near its centre, water communication is seldom resorted to. The markets generally resorted to by the inhabitants of this Township for the sale of surplus produce are, Summerside, New London Harbor and Graham's Wharf. Summerside is distant from twelve to fifteen miles; New London Harbor from four to eight miles from those living on the North side of the Southwest River; Graham's Wharf being the easiest of access, and the chief mart for the settlers on the south side of the Southwest River, is mostly resorted to, and a large amount of produce is annually shipped thereat. Long River Wharf, at the head of the South-west River, is also of great convenience to the inhabitants in that vicinity, and of Irish town,—one or two schooners generally loading there with grain in spring and fall.

ARCHIBALD MACKINSON.

LOT 21.

The quality of the land on this Township, in most settlements, will compare favorably with the soil of the Island in general; while in some parts it is inferior, in some settlements, particularly in and around Millvale road. Many of the settlers are in very destitute circumstances, living on rented farms, and being poor when they came here, having scarcely any clearance, and many of them no other way of subsistence than by planting a little with the hoe, they scarcely gain a livelihood, although the people seem industrious in general; the land is also very hilly, &c.

This Lot is pretty well intersected with roads, and which are in a fair state of repair. The greatest inconvenience to the travelling public is the want of a bridge over the South-west River, New London, at or near Cole's Ferry. The water communication is good; the harbor well buoyed, with about ten feet of water on the bar at half tide. Markets most generally resorted to for the sale of produce are, Miramichi, St. John, N. B., Newfoundland, New York, Boston, &c.

ABSTRACT OF GENERAL REMARKS.

LOT 22.

The quality of the land on this Township, except about 1000 acres on the North end, which was originally a pine forest, and repeatedly burnt; some few hundred acres of stony land, and a few hundred acres in the hollows by the brooks, is of a good quality, and will compare favorably with any land in Queen's County: the surface is uneven, and towards the South, hilly.

The Township abounds with springs and brooks of excellent water; many of the streams are of sufficient magnitude to propel mills. Fyfe's Bridge, New London, is the principal shipping place for the North end of the Township, to which there is access by pretty good roads, and where considerable quantities of oats and potatoes are annually shipped. The only market resorted to from the South end of the Township is Charlottetown, distant at the nearest point thirteen miles, by Anderson's Road, the Township roads leading to which are very hilly. The settlers on this part of the Township are mostly from the Island of Kansas, and do not appear to have agricultural skill; although they have been on the Lot twenty years, there are many who have not soed to plant their yet small farms, nor food for the coming summer. Very considerable numbers of cattle and sheep have likewise perished for want of sufficient food to sustain them through our long winter. Reference to the foregoing pages will show the very small amount of hay grown, and without it, in the absence of turnips—which are not grown—no man can keep stock through our long winter, without risk of losing them.

JEREMIAH SIMPSON.

LOT 23.

The North end of Lot 23, Cavendish and vicinity, ship their produce at Hope River, distant 2½ to 4 miles; some is also shipped at Rustico and New Glasgow Wharf. New Glasgow and vicinity ship from Rustico harbor, sometimes, but there is a sand bar at the entrance, which does not admit vessels of heavy draught of water, there being seldom more than eight feet of water at flood tide. Charlottetown is the principal market for New Glasgow, and the only market for the South end and centre of the Lot, say—Johnston's and the Malpeque Road, distant from eleven to seventeen miles, and a hilly road. Sea manure is obtained by only a few: no muscle mud or river mud on the Lot except in New Glasgow or Hunter River. Roads hilly, but generally pretty good. Fencing is chiefly done with fir and spruce poles, which are becoming very scarce. No cedar. Firewood scarce; worth about forty shillings per acre. By firewood, understand hardwood, such as beech, birch or maple.

JOHN C. CLARK.

LOT 24, AND PETER'S ISLAND.

The soil on Lot 24 will compare favorably with most of the land of the Island, with the exception of about 3000 acres fronting on Rustico Bay and the Gulf shore. The roads are numerous, and generally good. Charlottetown is the principal market for produce,—distant from ten to twenty-five miles. A bridge across the Hunter River would shorten the distance six miles to about one fourth of the population.

THOMAS McNEILL.

LOT 25.

Summerside is the nearest market at which most of the produce of this Township is sold and shipped; but as it is very inconvenient for many on the Lot to carry their produce so far, they require a wharf built on the North side of Bedouque harbor.

WILLIAM TAYLOR.

Lot 26.—No remarks.

Lot 27.—No remarks.

Lot 28.—No remarks.

Lot 29.—No remarks.

LOT 30.

*Argyle Shore.*—The inhabitants of this district are all freeholders; the land, if not first rate, is fertile, level and well watered, and from its proximity to the sea-shore—where abundance of manure can be easily procured—it can be brought to yield luxuriant crops, wheat, barley, oats and potatoes; the inhabitants are, consequently, among the most thriving in the Colony. Surplus produce is shipped at McEwen's Wharf and Crapaud.

*Bonshaw, Smell Creek, and Argyle Rear.*—With the exception of three or four families, the inhabitants of this District are all leaseholders, very poor, and utterly unable to pay back rent. The land is light and hilly. McEwen's Wharf and Crapaud are the places of shipment.

*Green Road.*—The land in this settlement is level and fertile, and the inhabitants industrious; they are Irish leaseholders, very anxious to purchase the freehold interest of their farms. Crapaud is their usual shipping place.

*Appin Road.*—This settlement is quite new; the land beautifully sloping to the South. The settlers are all leaseholders, contending with numerous privations. A cart road from Hugh Currie's to Green Road is indispensable.

*Settlements South side of Rhymery River, between Crosby's and Dollar's Mills.*—The miserable inhabitants of this District, composed of Irish and Highlanders, are destitute of roads and bridges. The land is very hilly and steep, except near the border of the stream. The inhabitants are all under some obligation to pay rent; there is no road, bridge or school in the whole District.

*Road between Townships Nos. 30 and 65.*—The land is generally second rate. The inhabitants are leaseholders and squatters, apparently very industrious; and although poor, extremely anxious to purchase the fee simple interest of their farms. Charlottetown is the nearest market.

*Scotch Settlement back of Lot 30.*—The land is so high, and the hills so steep in this District, as to preclude the possibility of its ever becoming a flourishing settlement. The farmers are Scotch Highlanders, frugal, persevering and industrious, else they would never have been able to maintain themselves under so many privations. They are all leaseholders, extremely anxious to become freeholders. The trading sum of eight pounds is the only item over appropriated towards roads and bridges in this District. Charlottetown, about 20 miles distant, is the nearest market.

*Old Tryon Settlement Road.*—The inhabitants are all squatters, natives of Ireland, and equally industrious and persevering with their Highland neigh-

ABSTRACT OF GENERAL REMARKS.

hours, and as anxious to become freeholders. The land is similar in every respect to that in the Scotch Settlement; the wretched state of the road is deeply felt by both. There are probably between six and seven hundred persons in the above three settlements, without a Magistrate or a Post Office; their quarrels are settled at Charlotetown or Crapaud, entailing exorbitant expenses.

ARCHIBALD MCKENZIE.

Lot 31.—No remarks.

LOT 32.

The lands on the South end of this Lot are light and fertile, and not subject to midew or early frost; the farmers have access to muscle mud and other sea manure, are all freeholders, and in easy circumstances. Those on the middle part of the Township are poor, the lands being flat and swampy, and subject to early frosts. The North end of the Lot is light and poor, and the farmers are chiefly tenants, and poor, having no access to sea manure, and their farms are very small. The crops this year were partially a failure. I met with many who had no seed nor anything to support their families during the ensuing summer. This Lot is well provided with roads and bridges, and near to places for shipping produce. Upon the whole, I am of opinion that Lot 32 is very poor, and may be classed second or third quality.

JONAS McPHEE.

Lot 33.—No remarks.

LOT 34.

With respect to the general quality of land in this Township, the Southern portion of it is superior to the other parts. Commencing at the Hillsborough, for three miles North, the land appears to be first and second quality; for two miles farther North, it is very inferior; but on towards the Gulf shore the quality is much improved, with the exception of the eastern portion of the Township, which cannot be considered better than third quality.

In regard to roads, there is a sufficiency for the convenience and accommodation of the inhabitants of the Township. As to water communication, there being no harbor on the North side of the Lot sufficient to admit trading vessels, the market resorted to for the disposal of surplus produce is chiefly Charlotetown; a few of the inhabitants of the Southern part of the Township ship off produce at Appletree Farm Wharf.

The extreme North part of this Township is distant about 14 miles from Charlotetown; the Southern part not more than 6 miles.

With respect to one name or the return—Robert S. Follows—that individual at first refused to answer all my questions, saying that he would give an account of his farm and stock, but that it was positively injurious to pry into a man's domestic concerns; and then he added that he would give a return such as he could swear to. The number of bushels of produce returned by him from a farm of 130 acres of arable land, is, I believe, far under the mark; and his return therefore, so far, in my opinion, is not reliable and correct.

DAVID LAWSON.

Under the head of "produce raised by each family during the past year," the following is the return above referred to: "5 bushels wheat; 5 bushels of barley; 5 bushels of oats; 5 bushels of buckwheat; 5 bushels of potatoes; 5 bushels of turnips; 5 tons of hay." Also, stock—"3 horses; 2 neat cattle; 1 hog."

Lot 35.—No remarks.

LOT 36.

The North of the Township, along the Sand Hills, is very destitute, they say, from high rents and poor land, and disadvantages in respect of markets; the nearest shipping place is McConnell's Wharf. If the Aiton road were made through, and a wharf at Hayden's, it would reduce the distance to between three and four miles to a shipping place, where it is now from nine to ten miles.

The South side of the Township is—part of it—better land, and the rents are lower; near the South boundary, the land is very poor; the only place of shipping is Hickey's Wharf, distant about six miles.

ALEXANDER STEWART.

LOT 37.

Farms on the sea shore of this Lot are partly ruined by drifting sand. Farmers, in general, not well off; rent too high for the quality of land. Scarcity of grain and potatoes for seed. Great loss of cattle and sheep on account of scarcity of fodder.

Light soil, in general, on the North side of the Hillsborough River, and very difficult to clear on account of so much wild tea and ferns; also, farming not carried on as it should be. Mount Stewart a good shipping place, but very poor road and bridge; road from St. Peter's Road to Mount Stewart Bridge is impassable, and the bridge unsafe.

BENJAMIN A. COFFIN.

LOT 38.

The land—from what I have seen of it—is good, and the greater part of it of first quality. The Southern part of the Township, being the best land, is being fast settled; although the settlement is new, they are fast reclaiming their forest. The Township is pretty well supplied with roads, there are about twelve different public roads, all in a very good state; the main post road being the worst I travelled on in the Township, excepting a new one lately cut out. If the bushes and trees allowed to grow close to the track on many of the roads, especially the main post road, were cut down the full width of the road—say sixty feet—the sun and wind would in the spring dry up the roads much earlier, if those obstructions were removed; and many heavy snow drifts in winter would also thus be prevented. The bridges are in a good state; I observed but two small ones, of about four logs each, bad, in the whole Township. The principal shipping place is Mount Stewart Bridge, at the head of the Hillsborough, distant about one mile from the nearest part of the Township, and about seven or eight from the farthest point.

WILLIAM STERN.

LOT 39.

The land on this Township appears to be, about

ABSTRACT OF GENERAL REMARKS.

one-third first quality, and nearly two-thirds second quality. The Township possesses the advantage of good roads,—with the exception of the new settlements. The markets mostly resorted to by the inhabitants are Charlottetown city, Mount Stewart Bridge, and country traders who export to Newfoundland, Nova Scotia and St. Pierre. The Township is upwards of twenty miles distant from Charlottetown, and six to twelve miles from Mount Stewart Bridge.

JOHN JARDINE.

LOT 40.

The settled land here is of good quality generally, and of a bad quality.

The roads are generally in a very good state, except two or three back roads, viz.: the road at Murrell, called Milltown road, and the road leading to Macdonald's Saw Mill; the bridges are in a fair condition, except Murrell Bridge—which requires to be built anew—well as one or two other small bridges. The water communication would be good but for the bar at the mouth of St. Peter's harbor; this bar makes it unsafe for vessels to come in or go out, consequently vessels will not come here in the fall; so the market is but a very small one on the bay. This compels farmers to take their surplus produce, some to Grand River and others to Mount Stewart Bridge—a distance of ten to sixteen miles. The people hope for a nearer market when the blackwater at the harbor of St. Peter's is completed.

WILLIAM HAYDES.

LOT 41.

The principal part of this Township consists of good land, pretty productive when under good tillage; notwithstanding, I would not class it among the first quality of land on the Island; and although it produces a tolerably fair return of cereal and green crops, it is too sandy and light, and being principally sloping land from ranging heights, much of its productive substratum is, in consequence, carried off—particularly in the spring seasons—to the bays and rivers, rendering it consequently but very inefficient for the production of hay or pasturage, as may be seen by the accompanying return; a considerable portion of it—probably one-sixth—is irremediable, being what is commonly called red spruce swamps.

The roads through the Township will compare favorably with the roads generally throughout the Island. In respect to water communication, the harbor of St. Peter's was never a good one, and is now become worse than ever; so much so, that the inhabitants have almost abandoned the shipment of their surplus produce, particularly in the fall of the year, by water, and have, therefore, no alternative for its disposal but to resort to a market in Charlottetown—a distance of over thirty miles—or to Georgetown, a distance of over twenty miles, and sometimes to Grand River harbor, about the same distance by the present route as to Georgetown. But a road in a straight line from the head of St. Peter's Bay to Grand River Bridge would bring the shippers of produce from this locality to within a distance of six miles, and often to—as it has proved of late years—a ready money market, and always to a

safe place of shipment, by Grand River harbor. This object once accomplished would prove of vast benefit not only to the settlers of St. Peter's Bay, and those in its immediate vicinity, but the surrounding country on the North side of the Island, to a considerable extent, would be benefited thereby.

PETER McCALLUM.

LOT 42.

On this Township there is but one main post road, leading from the head of St. Peter's Bay to East Point. This being the only market road, it should be always in good condition, but which is a difficult matter, in consequence of the proximity of the road to the North shore, there being several bridges which are in danger of being (and often are) carried away by the action of the sea; therefore it is the desire of the inhabitants generally to have the main post road nearer the rear of their farms, by which it will more easily be made a good road.

As regards markets,—the head of St. Peter's Bay is the nearest, being ten miles to the Eastern boundary of Lot 42, on the North side of shore; and Souris is the next, being from 16 to 18 miles.

RODERICK McINTYRE.

LOT 43.

The quality of land on this Township is in general good. The roads are mostly laid off to good advantage, with the exception of a back settlement in the interior, from Roderick McIntyre's, Cow River, towards Naufrage Marsh, where there are several settlers without any road. The only harbors on this Township are Fortune and Rollo Bays, which are not much frequented on account of the difficulty of getting to them, there being at Rollo Bay no way of approaching the loading ground but by a sand flat of a mile in length, which is covered with water at half tide. The chief market is Souris, about 12 or 13 miles distant from some parts of the Township; and a few traders in the vicinity. JAMES DAVIDSON.

LOT 44.

A good deal of the interior of this Township is low, swampy land. The principal market for surplus produce is at Souris, whence it is shipped by the merchants to the neighboring ports of Halifax and St. John, and occasionally to Boston. Seldom a cash market is met with at Souris; and to obtain cash for their produce, the inhabitants have to convey it to Grand River, a distance of 15 to 20 miles, or to Georgetown, a distance of 30 miles, when it generally commands a fair cash price. Shipping of produce from the North side has almost ceased; the inhabitants prefer taking it to market, by land, rather than running the risk of the delay and danger attendant on shipping it at the sea board.

JOHN MACGOWAN.

LOT 45.

The quality of land is generally good; this Township is well supplied with roads. Souris is the principal place of business, and where most of the produce is sold. Sometimes fish and grain are shipped from the North side, in summer, to save the hauling to Colville Bay or Souris harbor for shipment. The



ABSTRACT OF GENERAL REMARKS.

distance from the North to the South side (Souris harbor) is about nine miles.

ROBERT BOSWALL.

LOT 46.

Although the East end of the Island is almost surrounded by water, yet very much inconvenience is felt from the want of harbours; and the distance from any market causes a great deal of trouble to the inhabitants hauling their produce to market.

The Baltic Road settlement is principally very inferior land, with but an indifferent road, only lately opened. Greenvale, in the interior of the Lot, is very inconveniently situated, on account of bad roads; the nearest market is Souris. Glencorodale, which is a new settlement, with but middling land and very indifferent roads, is very much inconvenienced in regard to markets; the inhabitants have to bring their produce through to the North side, and from thence to Souris.

JAMES McVEAN.

LOT 47.

The soil of Lot 47 is generally good; scarcely any portion of it being unfit for cultivation, excepting about 1000 acres of barren sandhills, which being included in the area of the Lot, is levied on annually for arrears of land tax. Although this Township is nearly surrounded with water, yet being entirely destitute of harbors, and in an exposed position, Shipowners rarely venture to take freights off the coast, after the middle of October; and the road to Souris—the nearest place of shipment and about 15 miles distant—being one of the most hilly on the Island, the inhabitants are in a great measure cut off from the advantage of an autumnal exportation of their surplus produce.

Owing to the foregoing geographical disadvantages, Agricultural produce never commands such a high price at the East Point as it does in most other parts of Prince Edward Island.

EMANUEL MACRACHEN.

LOT 48.

A great part of the land in this Township is of good quality, and capable of producing fair crops; but there are other portions especially those remote from the shores, which will yield more than a scanty remuneration to the agriculturist, as the soil is generally composed of white sand, and swampy. These latter remarks refer chiefly to the lands at the upper end of the Lot, occupied principally by Irish inhabitants from Monaghan. The roads through the settlement above referred to are bad, and likely to continue so for some time, owing to the swampy nature of the land; those through the other parts of the settlement are fair. The principal markets for produce are Charlottetown, and the Ferry opposite that city.

ROBERT MURCH.

LOT 49.

There are seven school-houses and two churches on this Township. Governor's Island has no inhabitants. It is owned and cultivated by Robert Gay; the statistics of his produce, &c., are included in the returns of this Township.

JOSEPH SLEDGE.

LOT 50.

The general quality of land on this Township is good. The roads are passable. With respect to markets, there is no part of the Lot distant more than five or six miles from Vernon River Bridge—one of the best shipping places in the Township; China Point Wharf is also a good shipping place, as vessels drawing twenty-two or twenty-three feet of water can load in the harbor.

THOMAS BEER.

LOT 51.

1. *Quality of land.*—The land in general on this Township appears to be of an average quality; about one-half of it is of the first, one-third is of the second, and the residue is of the third quality.

2. *Roads and water communications.*—The Township is pretty well intersected by roads, with the exception of that portion of it South of Montague River, the only road there being nothing better than a winter timber road. The main post road leading from Charlottetown to Georgetown intersects the middle of the Lot East and West. Baldwin's Road runs Northward from the main post road, and connects it with the Pisquid road leading from the head of Cardigan, and crossing Lot 51 to Mount Stewart Bridge, affording communication between the Cardigan and Hillsborough Rivers. The Union road runs South from the main post road, and connects with Sparrow's road to the South, which crosses the Lot East and West, and leads to Montague Bridge.

3. *Markets.*—To the inhabitants of the South end of the Township, Montague Bridge offers the nearest and most advantageous market; from them it is distant about two and a half miles; from those in the central parts, about six miles; and from the Northern settlements, about nine miles; it is the chief market, and that most resorted to by the inhabitants of the Lot, and where the greater portion of the produce is shipped; much of the produce, however, finds its way to Georgetown, Cardigan, Brudenell and Hillsborough Rivers. Georgetown is distant, on an average, about ten miles, and Brudenell Wharf and the Hillsborough respectively, about eight miles from the Northern settlements on the Township. The new bridge now in course of erection on Cardigan River, will afford—from its proximity to the Northern portions of the Lot—the most convenient place of exportation.

JAMES MACDONALD.

LOT 52.

The quality of land on this Township (as shown by the returns) is, with few exceptions, "second." The enumerator is of opinion that it would bear a higher rating. The Southern half is a light soil, but easily cultivated. About the middle of the Township, and towards the North end, is a portion of swamp; but where the land is dry, it appears to be of excellent quality. The Township, generally, is level, possessing a good quantity of firewood, rails, and timber for building purposes. The Southern half is well situated as regards both roads and water communication; the furthest settlers, with the exception of a few at the North end, about Morell, being within eleven miles of Georgetown; nine of Montague Bridge; eight of Brudenell Wharf; and

ABSTRACT OF GENERAL REMARKS.

about eight of Cardigan Bridge. Should the road be opened, as contemplated, to the latter place, the distance will be shortened about one and a half mile; but the majority of the inhabitants of the Township are two to five miles from shipping places. Of these, Georgetown and Montague Bridge are the most resorted to. Ten families in the back settlement about Morell, are very disadvantageously circumstanced, having neither roads nor water communications. If the Morell, crossing Prake's road, was bridged, it would be a great advantage to them, and it would soon become a large settlement; a great part of the land being taken up, but for want of roads people are tardy in settling there.

WILLIAM ALLEY.

LOT 53.

The soil of Lot 53 is light and sandy, with very little swamp south of Cardigan; on the north of Cardigan there is a large extent of swamp. I consider the Township second quality; nearly every settler has put his land down at that rating.

The Lot is well intersected with roads, in a very fair state for this time of year.

The advantages of the Lot as to water communication are equal to any in King's County, having a frontage on Montague River, with Brudenell and Cardigan Rivers crossing it, with a depth of water sufficient for vessels of a moderate size to load in. Most of the settlers on the Lot go to Georgetown, Brudenell Wharfs and Montague Bridge, which are easy of access, with their surplus produce; those on the North of Cardigan have a long distance to go to Georgetown,—some twelve miles; when the new bridge on Cardigan River is finished, it will shorten the distance to Georgetown, and will be a first rate place at which to load vessels of a large draught of water.

GEORGE MOAR.

LOT 54.

This Township, with the exception of the portions thereof bounded by the Cardigan, has been but recently settled; therefore, the quantity of agricultural produce stated in the annexed return cannot be fairly reckoned as testing the capabilities of the soil for agricultural purposes. The township is of an undulating and uneven surface; in many places swampy, but interspersed with tracts of superior land, yielding all the variety of timber peculiar to King's County, excepting hemlock. The quality of the soil is a fair average of the Colony, although the unevenness of the surface causes a material difference in the soil, in the different localities.

Lot 54 is favorably situated for the purposes of commerce, having a good wharf on Cardigan Bay, and shipping accommodation at Grand River Bridge. It is bounded on the east, longitudinally, by a road leading from Cardigan Wharf to its rear, and intersected by two roads, transversely, respectively named Launching road and Grand River road, all of which are in good repair, except the road leading from Grand River road to the rear, or North boundary of the Lot.

The market to which the inhabitants of this Lot resort is Georgetown, which by the winter route is three miles from the southern extremity of the Township; but by the summer route, along the main road,

Georgetown is eleven miles distant from the nearest part of Lot 54, although that distance may be much shortened by crossing the Cardigan Ferry.

Hector Johnson.

LOT 55.

The principal market, and that nearest to Grand River, is Georgetown, and Launching Wharf, and Grand River Wharf; there are besides, three small wharfs, all private property, on Grand River,—one at the head of the river, on the west side, and two on the east side, one of the latter two to three miles from the Grand River Bridge. The bridge at the head of Grand River is in a very bad state of repair, and much decayed; a new bridge is much needed here.

The road from Enman's to Mathewson's across Hayden's Milldam, is not passable, either in spring or fall; residents of the District estimate the cost of making it a sufficient road at one hundred pounds; sixty pounds have already been expended on it. Inhabitants speak of endeavoring, by the interference of Government, to get the road shilled on Alexander Hayden's and Mathewson's land, as they think that the one now in use over the dam, can never be made a good road without great expense to the country to keep it in repair.

The roads on the East side of Grand River travelled by me this spring are in better order, in general, than they have been for some years past; if the Commissioner had money enough to expend, the roads would soon be fair. On the west side of Grand River I travelled a good deal along shore and across farms; but such parts of the road as were travelled on are in a very fair condition for this season of the year.

As regards the quality of the land on Lot 55, some is very poor,—I should say over one-third of it,—and a considerable part of it swampy; some of the land is second, and the remainder first quality, that is, as far as I have travelled it.

JOHN WISE.

LOT 56.

The land in general is second quality. The advantages in regard to roads are good, if they were kept in repair. The markets most resorted to are Lower Grand River and Fortune harbor. The harbors are very inconvenient to a number of settlers on this Township.

WILLIAM CONOAN.

LOT 57.

The land of Point Prim is very fine; that of the Portage is lighter, and not so good. The Orwell soil is excellent; that of Newtown is light and not so good. The Murray Harbor road settlement, and the different adjoining Districts possess very good soil, with the exception of Brez's Creek, which is light and stony.

At Pucko Wharf,—distant seven or eight miles from some of them,—the people of Point Prim ship their produce; the roads in general are very soft, spring and fall. The inhabitants are very anxious that a wharf be built at Angus Macaulay's; the harbor, from the entrance, runs pretty straight, so far, and vessels of greater draft could load there, and get in and out much sooner and more easily, while the distance would be considerably shortened.

ABSTRACT OF GENERAL REMARKS.

I believe the people would subscribe handsomely towards that object. The inhabitants of the Portage and Lower Newtown load, in general, at Pinette Wharf; those of Orwell and Upper Newtown generally, at Orwell Point or Vernon River Bridge,—a distance of three to four miles. The people of Murray Harbor road, and of the different adjoining settlements, load either at Vernon River Bridge or at Montague River Bridge,—distance in general about five miles; the greater quantity of the produce is carried to the latter place, on account of the number of Americans loading there, and the generally better prices obtained.

ALEX. MACDOUGALL.

LOT 58.

St. John's Church, in connection with the established Church of Scotland, and St. Michael's Chapel, of the Roman Catholic Church, and the Light-house on Point Prim, are erected on this Township. In the centre of this Lot is Pinette River—the nearest and usual market for surplus agricultural produce. Widow Lyance, widow Jessie Macdonald, and Murdoch Martin—one of the late immigrants—who have settled in the Surrey settlement, have got helpless families, and are not in a situation to pay for any part of their land. I beg most respectfully to recommend them to the favorable consideration of his Excellency the Lieutenant Governor in Council. The settlers on Lot 58 who have complied with the Government terms, and paid the first instalment of the price of their lands, are returned as "freeholders."

ALEXANDER McLEAN.

LOT 59.

The land on this Township is inferior, not to be rated above second quality, the best of it being a poor sandy soil. The Lot is well supplied with roads, and these roads are in good repair for this time of year. The markets and chief places of shipment of surplus produce are Montague Bridge and St. Andrew's Point. At the former, there is always a ready market for produce, at the shipping season; it is about eight miles distant from the farthest part of the Lot. At the latter place a large quantity of produce is bought by the resident trader, and shipped to the different markets. A public wharf is in course of erection at Aitken's shore, which, when finished, will be a very convenient shipping place for surplus produce for a portion of the inhabitants of this Lot.

JOHNSTON AITKEN.

LOT 60.

The land generally is third quality. The inhabitants in general resort to Pinette market. The inhabitants of Culloden settlement, fronting on the Selkirk Estate, labor under much difficulty for want of water; there is none within two miles of some of them, in summer. They complain of being assessed to support Free Education, and cannot get a School-house erected, for want of means, although there are children enough in the settlement to make up the average required by the Act. The inhabitants of Rona, fronting on the Three Rivers road, declare they are, in general, in poorer circumstances, than when the last census was taken.

WILLIAM ROSS.

LOT 61, AND PANMURE ISLAND.

The land on Lot 61 is generally bad; that which is not swampy, is sand and flint; when looking at the new fields on the new settler's farms, I could see flint stones almost as thick as grass over the surface. I did not see more than four or five good farms on the whole Township.

There are about forty immigrant families on the west end of the Lot, without even a road to their miserable abodes; of this they complain very much, as they have to carry every thing they can get (not what they want) ten or fifteen miles on their backs.

Two lines of roads are intended to be opened through to the Wood Island road, which crosses the west end of the Lot, but from some cause this object has been neglected for the past three years, and the above people are suffered to undergo all the hardships which can be better imagined than described. I had to wade nearly knee-deep in swamp, and was in danger of losing my horse.

The west end of Lot 61 is well wooded, but the land bad, worth nothing, except for lumber; far from market, and the settlers are without a road or a school. It is the last place I would choose to make a living in. A road is very much required to enable the poor people to get a horse to their abodes.

DUNCAN FRASER.

LOT 62.

The soil of this Township, in general, is light, sandy. The roads require to be greatly improved. There is no stated water communication with other ports; the inhabitants suffer great inconvenience for want of a harbor. The nearest stated market is Charlottetown, about 35 miles distant. In the fall of the year surplus produce is generally shipped at Pinette and Murray Harbor,—distant respectively ten or twelve miles.

DUNCAN MURN.

LOT 63.

So far as my acquaintance with the soil of the said Island extends, I am of opinion that Lot 63 is among the poorest, for farming purposes; and all of it fit for cultivation is nearly occupied; there is a great extent of what is called barrens or swamp, and the crops on the farms near the swamps are often destroyed by the early frosts.

The inhabitants of this Township have, in a great measure, to deal with the merchants in Murray Harbor proper, and at St. Andrew's Point, and Georgetown. Sometimes American vessels call into St. Mary's Bay in the autumn, and pay for produce in cash. The roads are very good, except in the rear of the Township, and there they will never be good, on account of deep ravines, although mostly dry, rendering it very difficult for the poor settlers there to take their produce to market; some of them will have to cart it about thirteen miles to the shipping places on Lots sixty-three and sixty-four; but in my opinion it will be long before the poor settlers on the rear of Lot 63 will be able to ship much produce.

As regards leases, neither the time when they were executed, nor the time expired, could be correctly ascertained, because some not being able to pay for it, have not got a lease yet, and some have a number of leases, once held by others, and

ABSTRACT OF GENERAL REMARKS.

many or most of these have been executed at different times, and with different rents payable, &c.

JOHN DALZIEL.

Lot 64.—No remarks.

LOT 65.

*South Shore.*—The land is generally high and stony, but the inhabitants, by industry, and the collection of sea manure, raise considerable crops of wheat, oats and potatoes, but very little hay. Charlottetown is their chief market, to which most of the surplus produce is hauled on the ice, on account of the want of a convenient shipping wharf.

*Nine Mile Creek.*—The land is more loamy and flat,—better adapted for hay and pasturage; but rent is a great hindrance, especially to those in arrears; their shipping place is the wharf at Deadman's Point.

*Big Point.*—The land is generally very gravelly and dry; but for the advantage of sea manure, some farmers could hardly subsist,—to say nothing of paying rent. Their shipping place is McEwen's Wharf.

*Canoe Cove and Rear Settlement.*—The rear settlement is very gravelly and dry land. The soil may be rated as third quality. The inhabitants are generally very poor; some of them hardly able to obtain seed.

Road between Lots 65 and 31, and also between 65 and 30, is very hilly land, and much subject to blast and mildew, about the creeks, by reason of which the wheat crop generally fails; some have abandoned sowing it altogether. The general market is Charlottetown, distant about twelve miles.

NEIL MACRINNON.

LOT 66.

The north end of this Lot is rather far from any market or shipping place,—Montague Bridge being the nearest. There is but one School-house on the Lot.

JOHN MACLEAN.

LOT 67.

Lot 67 is situated in the centre of the Island, and contains a good deal of hilly land, with a great

quantity of stones, rendering it hard to cultivate; hence, the land ranks as second quality; but the Township contains neither swamps nor barren land. The land marked first quality is easy of cultivation, producing good crops of hay and grain of all kinds, as also root crops. The agricultural produce of the Township, generally, and hay particularly, was below an average, considering the breadth under crop, owing to the drouth of the season.

Charlottetown is the principal market for the eastern part of the Lot,—distant 14 to 20 miles. The nearest market, where a considerable quantity of produce is shipped, is New London, on the North side,—five to nine miles distant. Summerside, on the west,—thirteen to eighteen miles distant,—commands a good deal of grain, on account of the facility of getting goods or necessaries in return. Crapaud, on the south,—distant seven or ten miles,—would be a good outlet for produce, in the shipping season, were the County line road sufficiently improved.

WILLIAM HADLAM.

PRINCETOWN AND ROYALTY.

The quality of land in general is pretty good. The place is well supplied with roads. The markets mostly resorted to are Boston, Halifax, Miramichi, Dalhousie and Richibucto.

ARCHIBALD MACGEOGGIN.

GEORGETOWN AND ROYALTY.

The quality of land in the Royalty is poor. The town is advantageously situated for shipping. Road communication in the Royalty, indifferent.

JOHN C. MACKENZIE.

CHARLOTTETOWN AND ROYALTY.

There are thirty-nine inhabitants in the Barracks. In the County Jail are seven male prisoners—two of them criminals under sentence of death; and also two female prisoners, both of them criminals.

Steam Tannery of W. B. Dawson manufactured last year 64,088 lbs. of leather, valued at £7357 14s.

JAMES E. S. BAGNALL.

