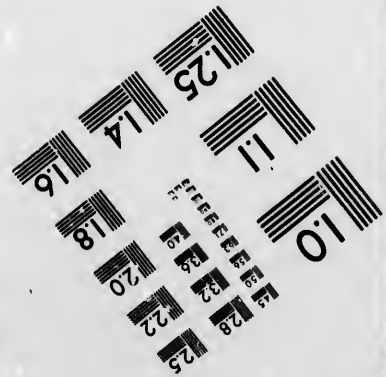
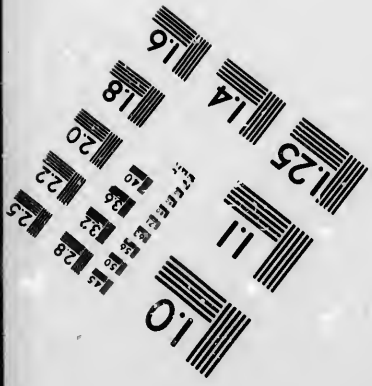
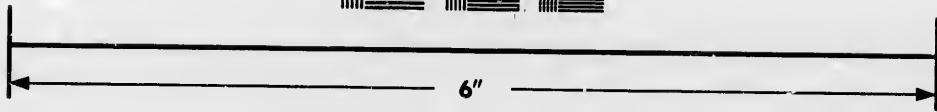
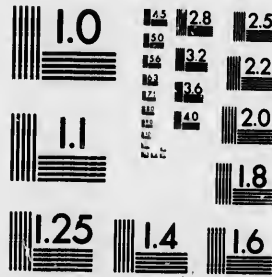


**IMAGE EVALUATION
TEST TARGET (MT-3)**



**Photographic
Sciences
Corporation**

23 WEST MAIN STREET
WEBSTER, N.Y. 14580
(716) 872-4503

**CIHM/ICMH
Microfiche
Series.**

**CIHM/ICMH
Collection de
microfiches.**



Canadian Institute for Historical Microreproductions / Institut canadien de microreproductions historiques

© 1986

The copy filmed here has been reproduced thanks to the generosity of:

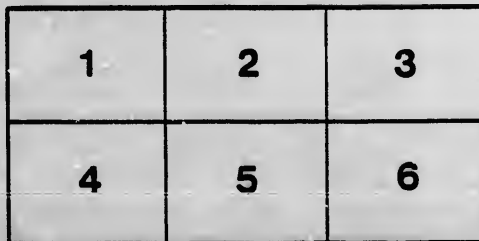
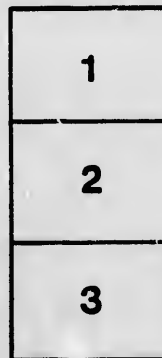
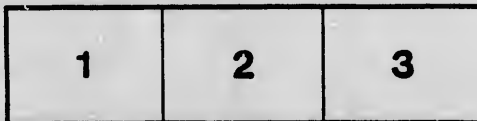
Archives of Ontario
Toronto

The images appearing here are the best quality possible considering the condition and legibility of the original copy and in keeping with the filming contract specifications.

Original copies in printed paper covers are filmed beginning with the front cover and ending on the last page with a printed or illustrated impression, or the back cover when appropriate. All other original copies are filmed beginning on the first page with a printed or illustrated impression, and ending on the last page with a printed or illustrated impression.

The last recorded frame on each microfiche shall contain the symbol \rightarrow (meaning "CONTINUED"), or the symbol ∇ (meaning "END"), whichever applies.

Maps, plates, charts, etc., may be filmed at different reduction ratios. Those too large to be entirely included in one exposure are filmed beginning in the upper left hand corner, left to right and top to bottom, as many frames as required. The following diagrams illustrate the method:



L'exemplaire filmé fut reproduit grâce à la générosité de:

Archives of Ontario
Toronto

Les images suivantes ont été reproduites avec la plus grande soin, compte tenu de la condition et de la netteté de l'exemplaire filmé, et en conformité avec les conditions du contrat de filmage.

Les exemplaires originaux dont la couverture en papier est imprimée sont filmés en commençant par le premier plat et en terminant soit par la dernière page qui comporte une empreinte d'impression ou d'illustration, soit par le second plat, selon le cas. Tous les autres exemplaires originaux sont filmés en commençant par la première page qui comporte une empreinte d'impression ou d'illustration et en terminant par la dernière page qui comporte une telle empreinte.

Un des symboles suivants apparaîtra sur la dernière image de chaque microfiche, selon le cas: le symbole \rightarrow signifie "A SUIVRE", le symbole ∇ signifie "FIN".

Les cartes, planches, tableaux, etc., peuvent être filmés à des taux de réduction différents. Lorsque le document est trop grand pour être reproduit en un seul cliché, il est filmé à partir de l'angle supérieur gauche, de gauche à droite, et de haut en bas, en prenant le nombre d'images nécessaire. Les diagrammes suivants illustrent la méthode.

errata
to

pelure,
n à



32X



VOTERS' LIST 1876

Municipality of Usborne.

POLLING SUBDIVISION No. 1

No. on Roll	NAME	Lot	Con.	REMARKS.
90	Anderson John	pt. 19 & 21	20r	
22	Balkwell William	N 1/2 12	10r	
84	Blatchford George	N E 1/4 21	10r	
39	Bowden William	24 25	10r	
55	Bonthron James	part 85	10r	
85	Balsdon George	S 1/2 19 and 20	2T.	
126	Burt Elam	15	80r	
128	Bissett James	17	80r	
145	Buchanan Alex.	38	80r	
180	Blatchford Richard	part 29 and 30	20	See sub-div. 4.
16	Cudmore Aaron	part 10	1T.	
21	Crawley Timothy	S 1/2 12	10r	
23	Cottle Ambress	part 18	10r	
24	Cottle George	part 18	10r	
25	Case William	part 18	10r	
29	Couch William	part 18	10r	
44	Case Abraham	29	10r	
45	Case Thomas	30	10r	
46	Case Joseph	31	10r	
47	Case Thos. Murray	31	1T.	
57	Cave Thomas	part 1	20r	
59	Cave James	S part 1	20r	
62	Coggins Thomas	S 1/2 8	2T.	
63	Coggins James	S 1/2 8	20r	
108	Christie John	E 1/2 31	2T.	
105	Cornish Thomas	32	2T.	
121	Contes Thomas	11 part 9	80r	See sub-div. 2.
28	Drew Edred	part 18	10r	
54	Doan Hadley	part 34	10r	

VOTERS LIST 186

No. on Roll	NAME	Lot	Con O. Co. or T	REMARKS.
44	Dempsey John	N $\frac{1}{2}$ 8	80'r	
98	Down Thomas	27	20'r	
99	Down John	27	20'r	
106	Dougal David	85	20'r	
112	Dempsey John	4	20'r	
124	Dew John	13	20'r	
185	Daymen William	S $\frac{1}{2}$ 24	80'r	
186	Dayman Humphrey	N $\frac{1}{2}$ 24	80'r	
8	Essery John	part 1 2	10'r	
52	Elder James	part 84	10'r	
56	Elder William	part 85	10'r	
118	Essery John	7	80'r	
119	Essery Samuel	8	80'r	
182	Elston Richard	22	8T.	
70	Fisher Frederick	9	2T.	
71	Fisher Richard	9	20'r	
88	Frayne Robert	S $\frac{1}{2}$ 17 ; pt 16 N $\frac{1}{2}$ 20	20'r	
87	Frayne John	N $\frac{1}{2}$ 20	2T.	
128	Fisher George	S $\frac{1}{2}$ 14	80	See sub-div. 2.
124	Fisher Pratt	N $\frac{1}{2}$ 14	80	See sub-div. 2.
187	Foster George	25	8T.	
4	Greenway William	8	1T.	
80	Greenway Thomas	part 18	10'r	
96	Garland James	E part 25	2T.	See sub-div. 2.
129	Greenwood Jos. P.	N $\frac{1}{2}$ 27	80'r	
1	Hooper William	part 1	1T.	
2	Hooper Henry	part 1	1T.	
5	Handford James	8	10'r	
7	Huxtable John	4	10'r	
8	Hockey Henry	S $\frac{1}{2}$ 5	10'r	
27	Hill James	part 14	1T.	
25	Harris William	part 21 22	1T.	
48	Hawkins George	28	10'r	
48	Henderson, George	N $\frac{1}{2}$ 32	1T.	
61	Harris Oliver	2	2T.	
80	Harten John	E $\frac{1}{2}$ 15	10'r	
122	Heywood John	12 13	80'r	
129	Hodgson James	18	80'r	
181	Harvey Richard	20 S $\frac{1}{2}$ 28	80'r	
69	Isaac Henry.	8	2T.	

MARKS.

No. on Roll	NAME.	Lot	Con. O, Oc, or T	REMARKS.
61	Jory Stephen	2	2 O'r	
17	Johns John	part 10	1 O'r	
40	Jeckell William	26	1 O'r	
74	Jones jr. John	11 part 9	2 8 T.	
75	Jones Thaddaus	11 part 9	2 8 T.	
76	Jones sen. John	11 part 9	2 8 O'r	
91	Jory James	E $\frac{1}{2}$ 21 22	2 O'r	
92	Jory Simon A.	E $\frac{1}{2}$ 21 22	2 T.	
120	Jones Henry	10	8 T.	
67	Kerslake John	7	2 T.	
68 72	Kerslake Henry	7 10	2 O	See sub-div. 4.
73	Kerslake Robert	10	2 Oc.	
100	Keddy Walter	28	2 O'r	
115	Kelland Mathew	part 6 5 6	8 2 O'r	
116	Keiland Robert	part 6 5 6	8 2 T.	
180	Kernick Thomas	19	8 Oc.	
140	Keddy Ralph	S $\frac{1}{2}$ 28	8 O'r	
140	Keddy William	N part 28	8 O'r	
102	Low George	W $\frac{1}{2}$ 31	2 O'r	
104	Low John	E $\frac{1}{2}$ 31	2 O'r	
118	Luxton John	part 5	8 O'r	
114	Luxton Frederick	part 5	8 O'r	
15	May Thomas	8 9	1 O'r	
58	Marshall John P.	part 84	1 O'r	
106	Moir Peter	33	2 O'r	
107	Moir George	34	2 O'r	
109	Murdock William J.	E $\frac{1}{2}$ 1	8 T.	
110	Murley John	W $\frac{1}{2}$ 1 2	8 O'r	
188	Millar James	21	8 O'r	
198	Manning Samuel	26 S $\frac{1}{2}$ 27 28	8 2 O'r	
142	Moir Andrew	30	8 O'r	
144	Moir Alexander	32	8 O'r	
187	Mitchell Valentine	35	8 O'r	
14	McMahon George	7	1 O'r	
86	McLeod George	28	1 O'r	
87	McLeod Geo. A. K.	25	1 Oc.	
88	McLeod James G.	28	1 Oc.	
41	McTaggart Sam. J.	27	1 O'r	
42	McTaggart Peter	27	1 T.	
89	McCond Robert	pt 19 & 20	2 O'r	

sub-div. 2.
b-div. 2

sub-div. 2.

No. on Roll	NAME	Lot	Con.	O. or T.	REMARKS.
12	Owen John	part 6	1	T.	
94	Oke James	24 N $\frac{1}{2}$ 28	2	T.	
95	Oke William	24 N $\frac{1}{2}$ 28	2	T.	
9	Perkin Richard	part 5 & 6	1	T.	
93	Pickard James	pt. 16 18 S $\frac{1}{2}$ 20	2	O'r	
60	Pym William	N $\frac{1}{2}$ 1	2	O'r	
97	Pengelly William	W part 25	2	O'r	
111	Popplestone Samp.	8	3	O'r	
51	Rodgers Matthew	part 88	1	O'r	
58	Riley Philip	S part 1	2	T.	
65	Rook Sen. George	4	2	T.	
66	Rook George	4	2	T.	
148	Ross Russell	81 S $\frac{1}{2}$ 32	8	1 O'r	
11	Sprague Obed	part 5	1	O	See sub-div 2.
141	Straug J. hn	29	8	O'r	
146	Stewart Robert	84	8	O'r	
31	Treble John	parts 18 and 14	1	O'r	
184	Tucker John	part 21	8	T.	
105	Trick John	82	2	O'r	
18	Voaper George	part 11	1	O'r	
10	Webber George	parts 5 and 8	1	O'r	
19	Weir George	part 11	1	T.	
20	Weir Thomas	part 11	1	O'r	
26	Walker Andrew	part 18	1	O'r	
18	Walker James	part 6	1	O'r	
82	Willie John	S $\frac{1}{2}$ 15 W $\frac{1}{2}$ 15	1	2 O'r	
50	Workman James	part 88	1	O'r	
77	Welsh John	12	2	T.	
79	Westcott William	14	2	O'r	
81	Westcott James	part 16	2	T.	
82	Westcott George	16	3	O'r	
84	Westcott Henry	N $\frac{1}{2}$ 17	2	O'r	
98	Westcott Chris.	N $\frac{1}{2}$ 28	2	O'r	
101	Wood James	W $\frac{1}{2}$ 29 and 30	2	O'r	
127	Westcott William	part 16	3	T.	
147	Wood William	85	3	O'r	
69	Westcott Walter	8	2	O'r	
77	Welsh Richard	12	2	O'r	

No. on Roll

216 An
226 An
240 An
272 An
311 An
397 An

151 Br
152 Br
155 Bal
167 Bus
192 Bal
268 Bri
269 Bri
270 Bri
271 Bri
286 Bri
382 Ben
387 Batt
355 Bro
377 Batt
361 Bro
382 Bro
390 Balk
391 Bro
392 Bro
385 Brui

158 Chow
190 Chin
211 Corn
215 Coun
235 Crook
260 Case
262 Corn
275 Coop
275 Coop
277 Coop
278 Coop
287 Coat
345 Cle. ne
385 Corn

VOTERS' LIST 1876.

Municipality of Usborne.

POLLING SUBDIVISION No 2

No. on Roll	NAME.	Lot	Con.	O, Oc, or T	REMARKS.
216	Andrew John	4	8	O'r	
226	Andrew George	part 10	8	O'r	
240	Andrew Thomas	18	8	O'r	
272	Andrew Philip	part 3 & 4	7	O'r	
311	Andrew Joseph	S† 18	7	Oc	
397	Ahnan David	12	9	O'r	
151	Brownlee James	S† 2 & 3	4-5	O'r	
152	Brownlee William	S† 2 & 3	4-5	Oc	
155	Bain Philip	E† 8	4	O'r	
167	Buswell George	part 15	4	O'r	
192	Balman Thomas	S† 15	6	O'r	see sub-div. 4.
268	Brimacombe Wm	2	7	O'r	
269	Brimacombe Rich'd	2	7	O'r	
270	Brimacombe Chas.	2	7	O'r	
271	Brimacombe John	2	7	O'r	
286	Brimacombe John	part 10	7	O'r	
332	Bennett Lawrence	1	8	O'r	
337	Batten John	part 4 & 5	8	O'r	
355	Brown Henry	part 10	8	O'r	
377	Batten John	S part D	9	O'r	
381	Brock John	B	9	O'r	
382	Brock William	part A S† 2	9-8	O'r	
390	Balkwell James	7	9	O'r	
391	Brown William	part 11	9	O'r	
392	Brock Samuel	S† 9	9	O'r	
395	Bruin Patrick	11	9	O'r	
158	Chowing William	part 2 & 3	4	T.	
190	Ching John	12	5	T.	
211	Cornish jr. John	N† A	6	T.	
215	Caultis Richard	8	6	O'r	
225	Crocker James	part 10	8	Oc	
260	Casey Thomas	D.	7	O'r	
262	Cornish John	B	7	O'r	
275	Cooper sr. Jonathan	7 part 7	7.6	O'r	
275	Cooper Robert	7 part 7	7.6	Oc	
277	Cooper jr. Jonathan	7 part 7	7.6	Oc	
278	Cooper John	7 part 7	7.6	Oc	
287	Coates Christopher	part 10	7.8	O'r	
345	Clements Isaac	N† 7	8	O'r	
385	Cornish William	3 part 4	9	O'r	

VOTERS LIST 1876

No.	NAME	Lot	Con	O.	REMARKS.
386	Cornish Francis	part 4	9	O'r	
394	Cook Thomas	parts 10 & 11	9.8	O'r	
400	Coward Robert	parts 15 & 15	9	O'r	
401	Coward William	N 1/2 18	8	T.	see sub-div. 4
402	Clark William	N 1/2 15	8	O'r	
381	Colbert James	part 8	8	O'r	see sub-div. 1
121	Cones Thomas	14	7	T.	
256	Casey Patrick	S 1/2 E	7	O'r	
257	Casey Thomas	S 1/2 E	7	O'r	
684	Casey Thomas	11	11	s w B T.	
148	Davis Samuel	A	4	O'r	
219	Dagg Francis	6	6	O'r	
237	Davidson Robert	part 10	8	O'r	
346	Delbridge sr. Richard	S 1/2 8	9	O'r	
847	Delbridge William	S 1/2 8	9	O'r	
348	Delbridge jr. Richard	part 8 & 9	8	O'r	see sub-div. 4
365	Dinning Joseph	S 1/2 18	9	O'r	
891	Delbridge John	part 8	9	O'r	
283	Elliott Robert	part 10	7	O'r	
398	Francis Henry	13	9	T.	
123	Fisher George	part 14	4	O'r	see sub-div. 1
125	Fisher Pratt.	part 14	4	O'r	see sub-div. 1
265	Gourley James	E 1/2 1	7	O'r	
357	Godbolt Frederick	part 11	8	O'r	
156	Hunter Leonard	W 1/2 8 4 5	4	O'r	
157	Hunter George	2 W 1/2 10	5	O'r	
158	Hunter Richard	W 1/2 6 7 8 & 9	4	O'r	
208	Hicks Daniel	C	6	Oc	
218	Herbert James	N 1/2 5	6	T.	
221	Hunter Samuel	9 8	6	T.	
222	Hunter Richard	9 8	6	O'r	
231	Halls Samuel	part 10	6	O'r	
232	Hind John	part 10	6	O'r	
235	Hind George	part 10	7	O'r	
236	Hind Robert	part 10	7	O'r	
238	Halls Samuel P.	S 1/2 11	6	O'r	
239	Halls James	N 1/2 11 12	6	Oc	
267	Harding William	2	7	O'r	
280	Hunter John	N 1/2 8 8 9	7	O'r	
281	Heywood Thomas	9	7	O'r	
307	Halls John	N 1/2 11	7	O'r	
331	Horn William	A	8	Oc	
338	Hogg Samuel	N part 5	8	Oc	
339	Hogg Joseph	N part 5	8	Oc	
342	Hern Henry	N 1/2 6 S 1/2 7	8	Oc	
343	Hern Philip	N 1/2 6 S 1/2 7	8	Oc	
888	Hern Thomas	1 N 1/2 2	9.8	O'i	
398	Heywood George	N 1/2 9 S 1/2 1 C N pt. 10	9.8	O'r	

No.	NAME	Lot	Con.	O, Oc, or T	REMARKS
899	Harton Thomas	S 1/4 14	11	9	O'r
680	Hodgin John	7	11	swb	O'r
626	Hogg Herbert	20	11	swb	T
150	Horrell Isaac	1	4		O'r
368	Isaac Samuel	N 1/4 15	18		O'r
210	Jaques William	S half A	11	6	O'r
218	Jaques Thomas	1	6		O'r
258	Jaques Solomon	N 1/4 E.	10	7	O'r
808	Johns Richard	12 14	11	7	O'r
809	Johns William	N 1/4 18	11	7	O'r
688	Jones Daniel	W 1/4 10		swb	O'r
261	Jones Richard	C	7		O'r
268	Jones William	A	7		T.
149	Kestle John	1	4		T.
241	Knight John	part 14	6		O'r
259	Knowles Robert	D	7		T.
840	Kyle sr. James	S half 6	10	8	O'r
841	Kyle jr. James	5	10	9	O'r
640	Kehoe Philip	18	11	swb	O'r
687	Kensela James	part 12	11	swb	O'r
827	Magee John	F	10	9	O'r
159	Martin William	E 1/4 7 8 9 S 1/4 10 18	4	5	O'r
274	Miner William	6	17	2	O'r
285	Miner William	part 10	7	9	O'r
288	Maier John	part 10	7	9	O'r
980	Millson George	B S half D	8	3	O'r
851	Millar David	part 11	11	18	O'r
862	Madge Philip	S half 15	8	7	O'r
976	Middleton Francis	E	9		O'r
626	Mara John	part 12 & 10		swb	O'r
688	Morley Henry	part 14		swb	O'r
896	Morley Benjamin	part 14		swb	O'r
264	McCague James	E half 1	7		T
628	McDonald John	S 21	9	8	O'r
624	Nagle James	17		swb	O'r
682	Ogden John	9		swb	O'r
160	Pincombe John	N part 10	11	4	O'r
166	Pincombe Richard	E part 10	11	5	O'r
209	Parkingson Samuel	B	6	1	O'r
214	Pym John	2	6	1	T
242	Perkin William	15	6		O'r
278	Prier John	S half 10	7		O'r
329	Pearl Joseph	N half D C	8		O'r

No. on Roll	NAME	Lot	Con.	O. C.	REMARKS.
888	Parkinson Thomas	8	8	O'r	
850	Powell George	part 11	8	O'r	
852	Penwarden David	part 11	8	O'r	
884	Penwarden Thomas	8	0	O'r	
186	Quinton William	1 N+ 8 4 5 6 7 8 5	8 5	O'r	
187	Quinton Bishard	1 N+ 8 4 5 6 7 8 5	8 5	O'r	
161	Rowcliffe John	S+ 11	4	O'r	
184	Rowcliffe William	18	4	T.	
280	Robinson William	Pt. 10	6	O'r	
858	Robinson Robert	Pt. 11	8	O'r	
854	Robinson Henry	Pt. 11	8	T.	
889	Rowcliffe James	8	9	O'r	
625	Routly William	18	8	O'r	
154	Sprague Obed	N+2, E+8	4	O'r	see sub-div. 1
191	Shute Thomas	14	5	O'r	
217	Skinner Samuel	S+5, 5	6	O'r	
220	Sleaman George	Pt. 7, S+8	6	O'r	
228	Sprague Theodore	Pt. 10	6	T.	
288	Shute Edward	Pt. 10	6	O'r	
242	Smale Thomas	Pt. 14	6	O'r	
266	Small Edmond	W+ 1	7	O'r	
279	Sleaman John	S+8	7	T.	
284	Sleaman William	Pt. 10	7	O'r	
802	Smith Henry	Pt. 10	7	O'r	
808	Spicer William B.	Pt. 10	7	O'r	
806	Spicer John	S+ 11	7	O'r	
826	Sadler Jarree	Q	8	O'r	
827	Squire Herby	E.F.	8	T.	
828	Squire Thomas	E.F.	8	T.	
868	Smith Alexander	Pt. 11, 12	8	O'r	
639	Shirlock Patrick	7	8	T.	
198	Tom James	N+15	5	O'	
289	Taylor Anthony	Pt. 10	7	O'	
885	Towl John	S+ 4	8	O'	
849	Turnbull George	W+8 & 10	8	O'	
878	Taylor William	Pt. C. & D.	8	O'r	
879	Taylor jr. John	Pt. C	9	O'r	
880	Taylor sr. John	Pt. C	9	O'r	
888	Taylor Richard	N half 4	9	O'r	
896	Turnbull Andrew	11	9	O'r	
204	Veal John	Pt. 10	6	O'	
182	Wadlan Richard	N half 11	4	O'r	
188	Wood William	12, Pt. 11	5	O'r	
189	Wilson Thomas	Pt. 11	5	O'r	
804	White Nicholas	Pt. 11	7	T.	
812	Werry William	15	7	O'r	

No. on Roll

412
559
620
612

528
504
500
458
489
488

422
428
426
428
429
480
481
448
444
485
525
582
546
547
548
549
614
618
599

VOTERS LIST 1876.

Municipality of Usborne.

POLLING SUBDIVISION No. 3

No. on Roll	NAME	Lot	Con.	Or.	REMARKS.
412	Avery Richard	B	10	Or	
559	Ashton Francis	O 11		Or	
620	Abraay John W.	O Pt. 18		Or	
612	Al ray William	O Pt. 12		Or	
528	Brimacombe Azr	O Pt. 18		Or	
504	Brown William	O 19	17	Or	
500	Bryans William	O 19	15	Or	
466	Bra, John	O 17	14	Or	
489	Beaver Benjamin	O 4	11	Or	
488	Bently John	O 16	10	Or	
422	Cornish George	O St. 8	10	T.	
428	Cornish John	O St. 8	10	Or	see sub-div. 2
425	Creery John	O 9	10	Or	
428	Creery William	O 11	10	Or	
429	Creery Robert	O T. 12, 13	10	Or	
480	Clark James	O 14	10	Or	
481	Clark Thomas	O 14	10	Or	
448	Camm John	O Tr. N. 6	11 10	Or	
444	Chewings David	O 12, 12	10	T.	
486	Copeland John	O 12, 12	18	Or	
525	Carliale James	O Pt. 18		Or	
582	Clark Nicholas J.	O Pt. 19		Or	
546	Campbell Andrew	O W. 17		Or	
547	Campbell Simon	O E. of W. 17		Or	see sub-div. 4
548	Cameron John	O 17, 18		Or	see sub-div. 4
549	Cameron Thomas	O E. 17		Or	
614	Cathcart John	O Pt. 12		Or	
618	Chappell Charles	O Pt. 18		Or	
589	Cairne William	O Pt. 8		Or	

1871 TAX LIST

No. on Roll	NAME.	Lot	Con.	O. Co.	REMARKS.
592	Dodd William	14	S.E.B.	O'r	
589	Dawson Archy	2	S.E.B.	O'r	
587	Dawson Robert	2	S.E.B.	O'r	
586	Dawson Duncan	2	S.E.B.	O'r	
581	Davis James	Pt. 19	N.E.B.	O'r	
498	Doups Henry	14, 15	14	Oo	
499	Doups Robert	14 15	14	O'r	
477	Durcan John	18	12	O'r	
476	Duncan Alexander	17	12	O'r	
420	Easterbrook John	4, 5	10	T.	
499	Ellerington Mark B	Pt. 17 & 18	18	T.	
621	Edwards Robert	Pt. '8	S.E.B.	O'r	
612	Ford Samuel	Pt. 12 & 13	S.E.B.	O'r	
557	Fraser Alexander	N pt. 27	S.T.R.	O'r	
552	Francis James	22	S.T.R.	O'r	
478	Francis Henry	Pt. 15	12	O'r	
454	Fletcher Michael	12, S+ 17, N+ 15	11 10	O'r	
452	Fletcher William	N+ 15 S+ 17	11 10	T.	
440	Fuller Charney	5 S half 6	11 10	O'r	
486	Fulton Hugh	N half 7	10	Oo	
484	Fulton John	N half 17	10	O'r	
414	Frayne John	1 part 2	10	T.	
426	Godbolt John	10	10	O'r	
450	Godbolt George	10	11	O'r	
468	Gourley John	11	12	O'r	
495	Gilfillan William	18	14	O'r	
498	Gilmour James	17	14	O'r	
522	Gullet James	part 18	N.T.R.	T.	
528	Gardiner William	part 18	N.T.R.	O'r	
529	Gardiner Robert	N half 20 pt. 19	N. & S.T.R.	O'r	
530	Gardiner William	N half 20 pt. 19	N. & S.T.R.	Oo	
583	Gardiner James	S half 20 21 20	N. & S.T.R.	O'r	
584	Gardiner Robert	S half 20 21 20	N. & S.T.R.	O'r	
601	Gould John	part 9	S.E.B.	O'r	
601	Hazlewood John	part 9	S.T.R.	O'r	
555	Hackney James	23	S.T.R.	O'r	
558	Hackney George	23 N half 18	S.T.R.	O'r	
462	Hazlewood William	part 8	11	O'r	
460	Harris sen. James	N half 18	11	Oo	
459	Harris jr. James	N half 18	11	O'r	
461	Hazlewood Thomas	11	11	O'r	
419	Horn Samuel R.	S half 8	10	O'r	

No. on Roll
 484
 621
 456
 471
 472
 486
 611
 611
 441
 478
 481
 489
 488
 551
 591
 608
 611
 611
 611
 558
 451
 451
 457
 481
 481
 581
 601
 601
 601
 601
 591
 551
 551
 521
 491
 491
 491
 481

No. on Roll	NAME	Lot	Con.	O. Co. or T.	REMARKS
484	Harah George	11	18	O'r	
628	Hopkins John	14	11	O'r	
459	Hackney William	17	11	O'r	
471	Irvine Gerard	18 S half 18	12 11	O'r	
472	Irvine Christopher	14	12	O'r	
486	Irvine John	18 N half 12	18 12	O'r	
615	Johns William	St. P. 12	10	O'r	
611	Jeffry William	B	10	O'r	
446	Kee John	S 9	11 7	T	
478	Kirk John	8	18 18	O'r	
481	Kirk James	S 10	18	Oc	
482	Kirk Alexander	S 10, S 12	18 12	O'r	
469	Kirk Willham	S 12	12	O'r	
551	Kay Thomas	21	s.e. 1/4	O'r	
596	Kirk Lewis	8	s.e. 1/4	O'r	
608	Kirk Samuel	Pt. 10	s.e. 1/4	T	
610	Kirk David	11	s.e. 1/4	O'r	
611	Kirk Adam	11	s.e. 1/4	Oc	
616	Kahler Henry	Part 18	s.e. 1/4	O'r	
558	Luxton William	Part 27	s.t. 1/4	O'r	
455	Makins Mark	18	11 11	O'r	
456	Makins Marshal	18	11 11	Oc	
457	Mill David	S 15, 14	11	O'r	
483	Mahon David	N 10	18	O'r	
490	Marshall Wetheral	9, N 9	18 19	O'r	
585	Murray Samuel	1	s.e. 1/4	O'r	
606	Millar Alfred	Part 9	s.e. 1/4	O'r	
600	Moor James	Part 8	s.e. 1/4	O'r	
608	McClocklin Dav. I.	Part 9, S 10	s.e. 1/4	O'r	
602	McCurdy John	Part 9	s.e. 1/4	O'r	
605	McGregor John	7, 5	s.e. 1/4	O'r	
558	McCurdy Samuel	26	s.t. 1/4	O'r	
554	McGill Richard	24	s.t. 1/4	O'r	
527	McNicol David	Part 19	n.t. 1/4	T	
490	McClocklin Thos.	Part 17	18 9	T	
491	McClocklin Dav. P.	S 17	18 7	O'r	
490	McCurdy Archibald	16	18 2	O'r	
482	McCullagh James	15, 16	10 11	O'r	

No. on Roll	NAME.	Lot	Con.	O, Oc, or T	REMARKS.
488	Melnnis John	8	11	O'r	
418	Nagle Thomas	A	10	O'r	
486	Nagle John	2, 16	11, s.e.s.	O'r	
487	Nagle sr. James	15	11	O'r	
479	Porter Robert	7	12	O'r	
468	Paisey William H.	part 8	12	O'r	
488	Pearn Thomas	8, N+8	11, 10	O'r	
415	Routly Emanuel	1, part 2	10	T.	
424	Routly Matthew	N+7 & 8	10	O'r	
505	Rutherford James	18	15	O'r	
420	Reeve John T.	5	10	O'r	
619	Shier Jonathan	part 12	15	O'r	
600	Smith Hugh	part 8	15	T.	
509	Shier Nicholas	14, 15	15	O'r	
501	Shier Adam	12	14	O'r	
497	Switzer Chris.	16	14	O'r	
489	Stinson John	N+15	18	O'r	
488	Stinson jr. William	S+15	18	O'r	
497	Stinson sr. William	14	18	O'r	
475	Stacey Thomas	16	12	O'r	
467	Sample James	N+10	12	O'r	
466	Sample John	S+10	12	Oc	
465	Sample Samuel	S+10	12	O'r	
442	Straffon Henry	N+6	11	O'r	
418	Skinner Samuel	part 2	10	O'r	
420	Simpson John	4	10	O'r	
521	Turnbull David	18	10	O'r	see sub-div. A
594	Tyfts Thomas	6	11	O'r	
592	Wood William	part 5	s.e.s.	T.	
590	Wiseman David	11	14	O'r	
512	Wiseman William	11	14	O'r	
464	Webb William	S+9	11	O'r	
447	Wynn Arthur	S+9	11	O'r	
448	Wynn William	N+9	11	O'r	
449	Wynn David	N+9	11	Oc	
441	Washburn Charles	E+6	11	T.	
421	Woodhull Wilmet	S+7	10	O'r	
417	Walker William	part 2	10	O'r	
416	Walker David	1, part 2	10	O'r	

No. on Roll

178
174
175
318
319
568
514
506
507
508
509
180
181
207
200
207
581
582
583
584
585
201
202
241
250

VOTERS' LIST 1876.

Municipality of Usborne.

POLLING SUBDIVISION No. 4.

No. on Roll	NAME.	Lot	Con.	REMARKS.
178	Armstrong George	28, part 6	4	N.T.R. O'r
174	Armstrong Irvine	28, part 6	4	N.T.R. O'r
175	Armstrong James	24	4	O'r
818	Anderson Robert	24, N ^o 25	7	O'r
819	Anderson Richard	W ^o 25	7	O'r
568	Alexander Robert	20	7	N.T.R. O'r
514	Allison John	T Part 10 and 28	7	N.T.R. O'r
506	Airth jr. James	Part 5	7	N.T.R. O'r
507	Airth sr. James	Part 5	7	N.T.R. O'r
508	Allin Thomas	Part 6	7	N.T.R. O'r
509	Armstrong George	Part 6	7	N.T.R. O'r
180	Blatchford Richard	Parts 81 and 82	4	O'r see sub-div. 1
181	Blatchford John	Parts 81 and 82	4	O'r
201	Bishop Archibald	26, W ^o 26	5	O'r
206	Bell William	O Part 31	5	O'r
207	Bell Robert	O W part 31	5	O'r
681	Bowerman Ich.	27	5	N.E.B. O'r
569	Bolton Samuel	21	5	N.E.B. O'r
582	Ballantyne James	18	5	N.E.B. O'r
500	Brimacombe Thos.	Part 12	5	N.E.B. O'r
196	Balman Thomas	18	5	O'r see sub-div. 2
205	Cudmore Thomas	30	5	O'r
225	Cameron John	Part 28	6	O'r
228	Cann Robert	Pts. 25, 27, 28	6	O'r
249	Cann Thomas	S ^o 27	6	T
250	Cann Charles	S ^o 27	6	T

NOTICE

No. on Roll	NAME.	Lot	Con.	S, O, or T	REMARKS.
402	Clark William	S half 18	9	O'r	see sub-div. 2
406	Campbell John	17	9	O'r	
407	Campbell Arch.	17	9	O'r	
409	Colwill James	28	9	T.	
541	Cole Alfred	part 12	S.T.R.	O'r	
545	Campbell Robert	E half 15	S.T.R.	O'r	
546	Campbell Andrew	W half 18	S.T.R.	O'r	see sub-div. 8
547	Campbell Simon	E half 16	S.T.R.	O'r	see sub-div. 8
518	Cottle John	part 18	N.T.R.	O'r	
197	Creep Thomas	N half 28	5	O'r	
169	Dew Robert	S half 17	4	O'r	
170	Dow William	N half 17	4	O'r	
324	Dinning William	part 28	7	O'r	
365	Dinning Joseph	16	8	O'r	see sub div. 2
202	Etherington St'ph.	25	5	O'r	
251	Ellerington Thos.	part 27	6	O'r	
871	Earl William	24	8	T.	
408	Elford Michael	16	9	T.	
184	Fulton Robert	84	4	O'r	
322	Fyfe John	27	7	O'r	
828	Fyfe James	27	7	T.	
255	Greenwood Philip	29	6	O'r	
561	Gardiner John	part 122	N.E.B.	O'r	
570	Glenn sr. John	28 80	N.E.B. 6	O'r	
578	Glenn jr. John	28 80	N.E.B. 6	O'r	
574	Glenn James	28 80	N.E.B. 6	O'r	
535	Gibson Robert	5	S.T.R.	O'r	
96	Garland James	part 82	4	O'r	see sub-div. 18
196	Harrison Charles	18	6	T.	
197	Horney James	S half 28	5	O'r	
198	Horney Henry	S half 24	5	O'r	
199	Horney Charles H.	N half 24	5	O'r	
200	Harris John	25	5	O'r	
204	Hardy Lancelot	29	5	O'r	
867	Hamilton Francis	part 17	8	T.	

MARKS.

No. on Roll	NAME	Lot	Con.	O, Oe, or T	REMARKS.
869	Hunkin John	28 W 1/2 26	8	O'r	
370	Hunkin Andrew	W half 26	8	Oc	
408	Hodgert Arch.	18	9	O'r	
579	Horton Samuel	26	N.E.B.	O'r	
580	Horton James	26	N.E.B.	Oc	
244	Johns Richard	N half 17	7	O'r	see sub div. 2
171	Kydd Robert	part 18	4	O'r	
172	Kydd William	part 18	4	O'r	
246	Kydd John	part 28	6	O'r	
247	Kydd jr. Robert	N half 28	6	O'r	
570	Kerslake George	22	N.E.B.	T.	
571	Kerslake Henry	22	N.E.B.	O'r	see sub div. 1
194	Martin William	16	5	O'r	see sub div. 2
512	Monteith Charles	9 part 18	N.T.R.	O'r	
511	Millar David	8	N.T.R.	O'r	
548	Monteith Pobert	18	S.T.R.	O'r	
177	Moir James	W 1/2 26 27 28 W 1/2 25	4 6	O'r	
178	Moir Robert	29	4	O'r	
182	Morrison Robert	38	4	O'r	
188	Morrison Andrew	38	4	Oc	
320	Marquis Richard	E 1/2 25 26 23	7 9	O'r	
372	Moir Thomas	24	8	O'r	
364	Marquis Richard	16	8	T.	
588	Monteith George	9	S.T.R.	O'r	
589	Madge Walter	10 18	S.T.R. 6	O'r	
540	Monteith James	W half 12	S T R	O'r	
179	McQueen Peter	80	4	O'r	
208	McFarlane Thos.	28	5	O'r	
320	McKenzie Murdo'k	part 25	7	O'r	
584	McTaggart Martin	80	N.E.B.	O'r	
515	McDonald Robert	11 6	N. & S.R.	O'r	
516	McDonald Alex.	6	S.T.R.	O'r	
519	McInnis Douakl.	14	N.T.R.	O'r	
520	McInnis Archibald	14	N.T.R.	O'r	
185	Nairn Thomas	36	4	O'r	
252	Nilson William	part 28	6	T.	

div. 8
div. 8

div. 2

180 B
181 B
201 B
202 B
203 B
204 B
205 B
206 B
207 B
208 B
209 B
210 B
211 B
212 B
213 B
214 B
215 B
216 B
217 B
218 B
219 B
220 B
221 B
222 B
223 B
224 B
225 B
226 B
227 B
228 B
229 B
230 B

AMERICAN... 1875

No. on Roll	NAME	Lot	Con.	O. Oc. or	REMARKS.
168	Perkin Charles	16		O'r	
194	Prout John	16		O'r	
195	Perkin Henry	17		O'r	
254	Pollard Thomas	Part 28 and 12		O'r	
816	Passmore Thomas	28		Oc	
278	Pybus William	25		T.	
274	Pybus John	28		O'r	
544	Passmore Henry	14		O'r	
517	Passmore William	28, 12		O'r	
868	Reemer Richard	N. 18		O'r	
582	Ryckman John	28		O'r	
588	Ryckman Philip	28		O'r	
586	Russell James	7		O'r	
510	Russel Thomas	7		O'r	
258	Strang David	Part 28		O'r	
315	Smalacombe John	16, part 11		O'r	
825	Stacey George	Part 28		O'r	
563	Stewart William	14		O'r	
564	Stewart John	N. 15		O'r	
565	Stewart Andrew	16, E. 15		O'r	
575	Stewart Neil	26		O'r	
578	Stewart James	26		O'r	
524	Somers Robert	16		O'r	
567	Thomson James	19		O'r	
587	Tyndall Anthony	8		O'r	
521	Turnbull David	15		O'r	
566	Vance James	17, 18		O'r	
176	Wilson Samuel	25		O'r	
244	Whitlock Isaac	17		O'r	
318	Werry Jr. Thomas	24		O'r	
314	Werry sr. Thomas	18, S. 17		O'r	
404	Whitlock silas	17		T.	
405	Whitlock John	17		T.	

I, SAMUEL P. HALLS, Clerk of the Municipality of Usborne, in the County of Huron, do hereby certify that the foregoing list is a correct list for the year 1876 of all persons appearing by the last revised Assessment Roll of the said Municipality to be entitled to vote in the several polling subdivisions of Usborne at Elections for members of the Legislative Assembly, and that a copy of such list was first posted up in my office at Elmville on the eighth day of August 1876. And I hereby call upon all electors to examine the said list, and if any omissions or other errors are perceived therein, to take immediate proceedings to have the said errors corrected according to law. Dated this 8th day of August 1876

SAMUEL P. HALLS, CLERK OF USBORNE

