

# CANADIAN Contract Record

*A Weekly Journal of Public Works, Tenders,  
Advance Information and Municipal Progress*

This Paper Reaches Every Week the Town and City Clerks, Town and City Engineers, County Clerks and County Engineers, Purchasers of Municipal Debentures and Leading Contractors in All Lines Throughout Canada

VOL. 15.

TORONTO, MONTREAL AND WINNIPEG, AUGUST 17, 1904

No. 27.

## THE CANADIAN CONTRACT RECORD

**PUBLISHED EVERY WEDNESDAY**  
As an Intermediate Edition of the Canadian Architect and Builder.  
Subscription Price, \$5 per annum, payable in advance.

## THE C. H. MORTIMER PUBLISHING COMPANY

of Toronto, Limited,  
CONFEDERATION LANE, BURLINGO, TORONTO.  
Telephone Main 2392.  
Branch Offices:  
30 Alliance Building, Montreal,  
Telephone Main 2399.  
310 McIntyre Block, Winnipeg,  
21 Great St. Helen's, London, England.

Subscribers who may change their address should give prompt notice of same. In doing so give both old and new address. Notify the publishers of any irregularity in delivery of papers.

## WATERWORKS CONSTRUCTION

Town of East Toronto, Ontario

Sealed tenders will be received by the undersigned until 5 p.m., MONDAY, AUGUST 23rd, 1904, for furnishing all material and labor in constructing the following:

**Section A—Force and Supply Main**  
5,220 feet of 12 inch Cast Iron Pipe, 1,750 feet of 10 inch Cast Iron Pipe, also all necessary Valves, Valve Boxes, Chambers and Special Castings, etc.

**Section B—Intake Pipe and Pump Well**  
1,800 feet of 12 inch Cast Iron Pipe, also all necessary Flexible Joints, Valves, Steel Pump Well and Steel Intake Screen.

Plans and specifications may be seen and tender forms obtained from the undersigned, or at the head office of John Galt, C. E. & M. E., Chief Engineer, Toronto. A certified bank cheque for \$1,000 must accompany each tender.

W. H. CLAY, Clerk,  
Town of East Toronto, Ont.

## Sewer Construction

PALMERSTON, ONT.

Sealed tenders will be received by the undersigned until MONDAY, 8 p.m., 29th AUGUST, 1904, for furnishing all materials and labor in constructing the following sewer system:

- 1,086 feet of 20 inch Pipe Sewer.
- 947 feet of 18 inch Pipe Sewer.
- 1,375 feet of 15 inch Pipe Sewer.
- 624 feet of 12 inch Pipe Sewer.
- 606 feet of 10 inch Pipe Sewer.
- 500 feet of 8 inch Pipe Sewer.

- 5,310—total.
- 106 Single T Y Junctions.
- 11 Manholes.
- 3 Flush Tanks.
- 24 Catch Basins.

Plans and specifications may be seen and tender forms obtained at Palmerston or at the head office of the Chief Engineer, JOHN GALT, C. E. & M. E., Toronto. Certified bank cheque for \$500 must accompany each tender.

H. HYNDMAN, Jr., Clerk,  
Palmerston, Ont.

## TENDERS

will be received until noon on FRIDAY, AUGUST 26th, for the erection of a Church Building in the City of Stratford. Building to be of Concrete and Cement Blocks.

W. J. IRELAND, Architect,  
Stratford, Ont.

ARCHITECTURAL DKAUGHTSMAN wanted at once. Apply stating experience and salary expected to Box 20 CONTRACT RECORD.

## TENDERS

Will be received until MONDAY, THE 22nd INST., for the several trades required in the erection of St. Andrew's Presbyterian Church, Burk's Falls, Ont. The lowest or any tender not necessarily accepted.

WALTER SHARPE, Secretary, Burk's Falls.  
GREGG & GREGG, Architects,  
96 King Street West, Toronto.

## TENDERS

Tenders will be received by the undersigned up to NOVEMBER 1st, 1904, for the construction of a System of Waterworks and Sewerage for the Town of Summerside, P.R.I., according to plans and specification made by Mr. R. C. Lea, C.E., of Montreal. Plans and specifications may be seen at the Town Clerk's office, Summerside. The lowest or any tender not necessarily accepted.

H. J. MASSY, Town Clerk,  
Town of Summerside, P.R.I., Aug. 10, 1904.

## TOWN OF PORTAGE LA PRAIRIE PROVINCE OF MANITOBA

## WATERWORKS AND SEWERAGE WORKS

Sealed tenders will be received by the Secretary-Treasurer until 5 p.m. on

WEDNESDAY, SEPT. 7th, 1904

for certain materials for laying about 40,000 feet of water mains and 16,000 feet of tile sewers.

Tenders for buildings, machinery and pipe-laying will be called for at a later date. Specifications and forms may be seen at the office of the Secretary-Treasurer, Portage La Prairie, or at the office of the Chief Engineer, 103 Bay Street, Toronto.

EDWARD BROWN, Esq., Mayor,  
Portage La Prairie, Man.

F. A. WHITAKER, Esq.,  
Secretary-Treasurer,  
Portage La Prairie, Man.

WILLIS CHIPMAN, Esq.,  
Chief Engineer,  
103 Bay Street, Toronto, Ont.

## Tenders for Debentures

Sealed tenders will be received by the undersigned up to 7 o'clock p.m., on MONDAY, THE 22ND DAY OF AUGUST, 1904, for \$24,000 Water Works Debentures of the City of Hull, of the denomination of \$1,000 each and payable in 30 years with interest at 5% per annum payable semi-annually.

Any information concerning these debentures shall be given on applying to A. P. Thibault, Treasurer, of the City of Hull.

JOHN F. BOULT, City Clerk.

## TOWN OF OSHAWA, ONT.

## TENDERS FOR DEBENTURES

Sealed tenders will be received by the Town Clerk, up to noon of the 20th DAY OF AUGUST, 1904, for the purchase of the whole or part of \$10,000 of Waterworks and Sewer Debentures, payable in 40 equal annual instalments of Principal and interest at 4% per annum from 1st August, 1904. Said debentures bear date 1st August, 1904, and are payable at the office of the Treasurer, Oshawa. Any accrued interest to be paid by the purchaser. The highest or any tender not necessarily accepted.

THOMAS MORRIS, Oshawa, Ont., Clerk.  
Dated 23rd July, 1904.

## BUSINESS NOTES.

The Consolidated Plate Glass Company, of Toronto, have been given additional power to manufacture all kinds of glass and mirrors and the by-products thereof.

William Stuart, contractor, of Ottawa, expects to have the new post office and custom house at Bowmanville, Ont., completed in two months. It is of pressed brick and gray Credit Valley limestone and is expected to cost \$25,000.

## Laying of Steel Conduit

## NOTICE TO CONTRACTORS

Tenders will be received, by registered post only, addressed to the Chairman of the Board of Control, City Hall, Toronto, up to noon on TUESDAY, AUGUST 13th, 1904, for the Excavation and Piling for and the Laying of 5,155 feet of 6 foot Steel Conduit on Toronto Island, between the shore crib and the proposed tunnel shaft in Toronto Bay, together with the necessary Valves, Flexible and Expansion Joints.

Envelopes containing tenders must be plainly marked on the outside as to contents.

Plans and specifications may be seen and forms of tender obtained at the office of the City Engineer.

The conditions relating to tendering as prescribed by City By-law must be strictly complied with.

The lowest or any tender not necessarily accepted.

THOMAS URQUHART (Mayor),  
Chairman Board of Control,  
City Hall, Toronto, August 5th, 1904.



## CONTRACTS OPEN.

CROFTON, B. C.—M. Conlin has decided to rebuild his hotel immediately.

GRAND MANAN, N.B.—A new fog alarm building is to be erected at North Head.

COBDEN, ONT.—The Village Council are considering the question of constructing granolithic walks.

DAUPHIN, MAN.—A by-law will be voted on to raise money to build an addition to the public school.

RAPID CITY, MAN.—N. Turfitt invites tenders up to August 20th for the drainage of Cooks marsh.

BURK'S FALLS, ONT.—Walter Sharpe invites tenders up to Monday, August 22nd, for the erection of a new church.

BRANTFORD, ONT.—George W. Hall, architect, desires tenders by 24th inst. for erection of two houses on Park avenue.

SMITH'S FALLS, ONT.—The by-law for the installation of a new waterworks pump was carried on Monday, August 8th.

VICTORIA, B. C.—Hooper & Watkins, architects, have just taken tenders on erection of a brick building on Cormoran street.

MASSEY STATION, ONT.—It is stated that the Massey Station Mining Co. will erect a 50-ton Elmore oil process plant here.

LITTLE CURRENT, ONT.—A by-law to raise \$1,200 to erect a new fire hall will be submitted to the ratepayers August 22nd.

AMHERSTBURG, ONT.—Xavier Malloux, of Tilbury, has purchased a lot on St. Arnaud street and will build a house on same.

NORTH TORONTO, ONT.—P. Pratt has commenced the erection of a brick residence at corner of Yonge and Merton streets.

WINDSOR, ONT.—The Windsor Boiler Works will erect a cement block building at corner of Wyandott, street and Caron avenue.

WESTWOOD, MAN.—R. P. Shanks desires tenders by 19th inst. for erection of a Methodist church, to be completed by November 10th.

RENFREW, ONT.—Tenders close 20th inst. for purchase of \$15,000 4 per cent. debentures. Particulars from S. E. Mitchell, County Clerk.

GREENWOOD, B.C.—It is rumored that the Great Northern Railway contract from Midway to Greenwood will be awarded at an early date.

ST. ANDREWS, N. B.—The St. Andrews Land Co. contemplate the erection of thirty cottages, also the rebuilding of Katy's Cove dam.

OSHAWA, ONT.—Thomas Morris, Town Clerk, invites tenders up to noon Monday, August 22nd, for the concrete foundations for a water tower.

WESTMEATH, ONT.—The Presbyterian church congregation have recently purchased a site on which they propose erecting a new church building.

MOOSE JAW, N. W. T.—G. M. Annable, of this place, has organized a company to carry on lumbering operations at Vioin Lake, south of Rossland, B.C.

MONCTON, N.B.—D. Pottinger, manager Intercolonial Railway, will receive tenders up to 25th inst. for construction of a station building at Maccan, N.S.

CREEMORE, ONT.—It is understood that tenders will shortly be invited

for construction of waterworks system here, from plans by John Galt, C.E., Toronto.

THAMESVILLE, ONT.—Plans for waterworks system here have been completed by John Galt, C. E. & M. E., Toronto, and tenders will be invited at an early date.

DUNGANNON, ONT.—J. M. Roberts invites tenders up to August 20th for the construction of 3,960 square feet of cement or concrete sidewalks on Main street.

HALIFAX, N. S.—D. Pottinger, General Manager Intercolonial Railway, Moncton, N. B., invites tenders up to August 25th for the construction of a quay wall of cribwork.

LONDON, ONT.—Matthews & Murray, architects, are preparing plans for a residence for W. J. Clark, of this city.—J. B. Smallman has purchased 20 feet of property on Dundas street, near Richmond.

SUMMERSIDE, P.E.I.—H. J. Massy, Town Clerk, is asking for tenders up to November 1st for the construction of a system of waterworks and sewerage. Plans by R. C. Lea, C.E., of Montreal.

STURGEON FALLS, ONT.—Jesse Bradford, of this place, will receive tenders up to Saturday, September 3rd, for purchase of \$2,000 school debentures issued by the town of Cache Bay, 5 per cent. interest.

REGINA, N. W. T.—The new armories to be erected at several points in the Northwest Territories will cost about \$80,000. The buildings will each be 32x60 feet, 2 stories, with armoury room 30 feet square.

LISTOWEL, ONT.—The Public Library Board have accepted the plans of R. B. Barber, architect, of Stratford, for a library building to be built in this town, at a cost of \$10,000.

ALBERT, N.B.—W. A. Trueman is taking tenders up to the 20th inst. for building a frame school house in the Riverside Consolidated School District No. 1, Hopewell and Harvey. Plans by W. P. Reid, architect, of Riverside.

BARRIE, ONT.—Mr. Thos. Kennedy, architect, is receiving tenders for alterations to Mrs. Rankin's residence also for additions and alterations to Henry Bird's residence and for a brick stable and carriage house for Dr. Ross.

WALKERVILLE, ONT.—A large extension will be made to the bottling room of Walker's distillery.—Surveyors are laying out the route of the proposed railway to be built by the Ontario Traction Co. from this place to Tecumseh.

CORNWALL, ONT.—A by-law to loan \$17,500 to J. B. Atchison to assist him in rebuilding his saw and planing mill, was carried on the 7th inst., also a by-law to exempt the old woolen mill, which is to be converted into a cotton mill.

ST. CATHARINES, ONT.—New tenders are invited up to 19th inst. for the supply of electrical conductors for the Welland canal. Plans at the office of the superintending engineer here, and of Roderick J. Parke, consulting electrical engineer, Toronto.

PALMERSTON, ONT.—Tenders are invited by H. Hyndman, jr., up to August 29th, at 8 p. m., for sewer construction, including 5,210 feet of pipe sewer, 106 single junctions, 2 flush tanks, 11 manholes and 24 catch basins. Plans here or at the office of John Galt, chief engineer, Toronto.

WILLOWDALE, ONT.—Peter S. Gibson & Sons, engineers Township of York, desire tenders by 20th inst. for repairing McKenzie avenue and Daven-

port road from the C. P. R. northerly to Davenport road and along latter to Toronto Junction, about 2,200 feet.

CALGARY, N.W.T.—Six by-laws, involving an expenditure of \$111,500, were voted on here August 13. The only one which passed was that to provide \$39,100 for waterworks purposes, including an extension of the mains and purchase of a new pumping engine.

HAMILTON, ONT.—Tenders are being taken until noon to-day for grading of extensions to yards at Welland, Hamilton and Vinemount, on the line of the Toronto, Hamilton, and Buffalo railway, Plans at the station.—The Toledo Stock Co. purpose building a factory in this city for the manufacture of shovels.

GRAND FORKS, B.C.—J. P. Graves, manager of the Granby Consolidated Mining, Smelting & Power Co., states that it has been definitely decided to double the capacity of the Granby plant by duplicating the number of furnaces. About \$75,000 will be expended in equipping the No. 2 and No. 3 tunnels at the Granby mine.

KINGSTON, ONT.—William Newlands, architect, has just taken tenders for the construction of a 4-storey mill building and addition to power house for the Frontenac Cereal Co.—Tenders are invited by H. P. Smith, architect, up to 22nd inst. for erection of a laundry and dormitory building for the Sisters of the House of Providence.

CRYSLER, ONT.—J. A. Cockburn, Clerk of Finch Township, is asking for tenders up to 25th inst. for constructing the Wiseman creek drain, estimated to cost \$1,788, also for necessary excavation for change of course of the Payne river and for the construction of concrete work for bridges across the Payne river. Plans by W. H. Magwood, C. E., Cornwall.

STRATFORD, ONT.—The Grand Trunk Railway purpose shortly erecting new shops, at a cost of \$170,000.—W. J. Ireland, architect, is preparing plans for a residence at Walton, Ont., for J. McDonald. Same architect is asking for tenders by 26th inst. for erection of a church building in this city, of concrete and cement blocks.

FORT FRANCES, ONT.—Plans will be filed in the Crown Lands Department at Toronto within a few days for the new power development plant which the Backus-Brooks syndicate of Minneapolis will construct on the Rainy river here. It is estimated that between 15,000 and 25,000 horse power can be developed, and it is proposed to establish large flour and pulp mills.

EAST TORONTO, ONT.—W. H. Clay invites tenders up to 8 p. m., Monday, August 29th, for furnishing all materials and labor in constructing a waterworks system as follows: Section A, force main—5,220 12-inch cast iron pipe; 1,760 feet of 10-inch cast iron pipe; valves, valve boxes, valve chambers, special castings, etc. Section B, intake pipe—1,800 feet of 12-inch cast iron pipe; flexible joints, valves, steel pump well, and steel intake screen.

HULL, QUE.—John F. Boulé, City Clerk, desires tenders by 22nd inst. for the following works in connection with the water power development at Brewery Creek: Concrete work, rock excavations, floors, stairs, plastering, etc., of power house, trench for 20-inch main, and laying of pipe in Brewery street.—Bids for the purchase of \$54,000 waterworks debentures will be received by the City Clerk up to 22nd inst.

ST. JOHN, N. B.—The Board of Works have given the Anglo Cold Storage Co. an option till January 1st, 1905, on three lots beside Wellington

Cor



Railway,

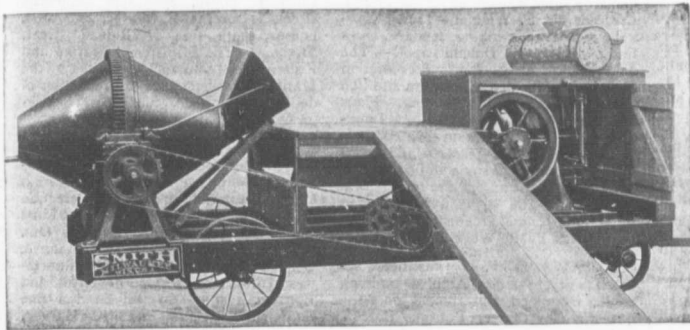
slip on which cold storage also decided construction of on Pettigill Barbour on has been su He recomm tained from the cost at \$

ARNPRI will shortly the proper Gillies.—Ge invites tend 28-foot mac street; a 5 walk on a si and 24-foot street; a 30 way on Ma foot macada 24 foot mac gal street; on Tiery st \$27,500.

TORON The Citizen on 10th ins joint stock ( the travellin building two next spring building on lowing bu granted: H lin avenue; on Clenden W. McKinl avenue, cost semi-detach cost \$3,000.

MONTR been grante cher, wareh cost \$10,000 dwelling ho \$6,500; Sis Notre Dam Ontario st Montreal, win street, two dwelling \$3,000; Tl house at 51 O. David, C up to 23rd cementing reservoir, ce square basin brick sewer at the entra

# Concrete Mixers For Street Work



The Smith New Model Street Concrete Mixer is a favorite among cement sidewalks and pavement contractors, being well known as a strong, portable and easy operating mixer, giving a large capacity per day. We furnish the Smith Mixer in several sizes with or without steam, gasoline or electric power — New Mixer Catalogue on request.

## W. H. C. MUSSEN & CO.,

Railway, Mining and Contractors' Supplies

MONTREAL, P. O.

# Portland Cements

Highest Grade

Canadian, German, English and Belgian

DRAIN PIPES and Connections of all kinds.

PAVING BRICKS, ENAMELLED BRICKS,

FIRE BRICKS, FIRE CLAY, Etc., Etc.

## F. HYDE & CO.,

31 Wellington Street

MONTREAL



Moulds and the Tile they make.

STEEL MOULDS

Latest Improved  
Making 4" to 36"

CONCRETE TILE

All kinds of  
ROAD MAKING MACHINERY and  
CONTRACTORS' SUPPLIES.

SAWYER & MASSEY CO., Limited  
Hamilton, Canada.

# Portland Cement...

HIGH GRADE GERMAN BRANDS FOR GRANOLITHIC  
AND ARTIFICIAL STONE SIDEWALKS.

Sewer Pipes, Best English Cements, Best Belgian Cements

Culvert Pipes, &c. W. McNALLY & CO., Montreal

# THE Canadian Casualty and Boiler Insurance Co.

Head Office: N.E. Cor. Adelaide and Victoria Streets, TORONTO.

The Steam Boilers of Civic and Municipal Steam Plants, and Corporation and Public Works, Power and Electric Light Plants regularly inspected.

A STEAM BOILER POLICY

in the Canadian Casualty and Boiler Insurance Company, includes the services of Consulting Engineers free of cost. Write for book to Steam Users.

ALEXANDER SUTHERLAND, D.D., President.  
H. N. BATE W. S. DINNICK, Vice-Presidents.

A. G. C. DINNICK, Managing Director  
A. M. WICKENS, Chief Engineer

slip on which it is desired to establish a cold storage plant. The Board have also decided to call for tenders for construction of a small frost-proof warehouse on Pettingill street.—The report of F. A. Barbour on a water supply for the city has been submitted to the City Council. He recommends that the supply be obtained from Loch Lomond and estimates the cost at \$170,000.

ARNPRIOR, ONT.—B. V. Stafford will shortly erect a residence adjoining the property purchased by James R. Gillies.—George E. Neilson, Town Clerk, invites tenders for the construction of a 28-foot macadamized roadway on Daniel street; a 5-foot cement concrete sidewalk on a section of Daniel street; a 30 and 24-foot macadam roadway on Elgin street; a 30 and 24 feet macadam roadway on Madawaska street; a 28 and 20 foot macadam roadway on John street; a 24 foot macadam roadway on McGonigal street; a 24-foot macadam roadway on Tierie street. The estimated cost is \$27,500.

TORONTO JUNCTION, ONT.—The Citizens League, at a meeting held on 10th inst., finally decided to form a joint stock company to build an hotel for the travelling public. Mr. Hoover intends building two houses on Franklin avenue next spring.—A. W. McKinley intends building on Franklin avenue.—The following building permits have been granted: H. Hoover, dwelling on Franklin avenue; M. Greenow, brick residence on Clendennan avenue, cost \$2,500; A. W. McKinley, brick residence on Clara avenue, cost \$1,400; John Brown, pair semi-detached dwellings, Fairview ave., cost \$3,000.

MONTREAL, QUE.—Permits have been granted as follows: Charles Fletcher, warehouse on St. James street west, cost \$10,000; J. A. Richard, four-roomed dwelling house on St. James street, cost \$6,500; Sisters of the Congregation of Notre Dame, school at Sanguinet and Ontario streets, cost \$6,000; Henry Montcalm, two dwelling houses on Aylwin street, cost \$2,500; Joseph Simard, two dwelling houses on Gain street, cost \$2,000; Thomas Dalrymple, dwelling house at 51 Forfar street, cost \$900.—L. O. David, City Clerk, will receive tenders up to 23rd inst. for levelling off and cementing the bottom of McTavish reservoir, cementing bottom of St. Louis square basin, and constructing a 3x2 inch brick sewer to receive the farm drainage at the entrance to the aqueduct.—The

therly to latter to bet. laws, in- oo, were only one provide, includ- and pur- ders are r grading id, Ham- ie of the railway, do Stock this city . Graves, solidated o., states ecided to y plant furnaces. in equip- ls at the

am New- tenders ore mill house for ders are ct, up to idry and rs of the

ockburn, sking for nstructing mated to r excavate Payne concrete ve river. E., Corn-

he Grand erecting o.—W. J. plans for or J. Mc- asking for tion of a concrete

Plans s Depart- days for ant which of Min- ain river een 15,000 e develop- lish large

W. H. m., Mon- ishing all ructing a Section A, iron pipe; on pipe; chambers, B, intake cast iron teel pump

lout, City d inst. for ction with at Brewery excavations, of power and laying ids for the ks debent- City Clerk

Board of Anglo Cold nuary 1st, Wellington

City Clerk is also asking for bids by 26th inst. for the purchase of the whole or part of \$700,000 4 per cent. bonds.

VANCOUVER, B.C. — The congregation of St. Paul's church have decided to build a handsome new church with stone foundation and lofty tower and spire, at a cost of \$12,000.—Edmund Bell, architect, has taken tenders for erection of offices for the North Vancouver Ferry & Power Co.—A. Clemes, of Spencer's Bridge, has purchased two lots on Hastings street, near Columbia ave. He will commence at once the erection of a 2-storey brick building on the rear of the lot, and later a large building fronting on Hastings street.—Rev. J. MacLeod is moving towards the erection of a new Presbyterian church in North Vancouver, a site for the purpose having been purchased.—Plans have been prepared for a new building to be built by H. Bell-Iving on corner of Georgia and Howe streets, to be 3 stories, 120 x 50 feet, cost \$25,000.—G. L. Betts, C.E., is making surveys for the proposed waterworks system for North Vancouver, and the Village Clerk has been instructed to advertise for tenders for the construction of the work.

WINNIPEG, MAN.—John Erickson has sold his store in Louise Bridge to M. Jancke, who intends extending it.—The piles for the foundation of the new C. P. R. hotel are now being driven.—W. B. Lat, architect, is this week taking tenders for erection of a frame residence on stone foundation on Balmoral street for W. G. Blyth. V. W. Horwood is taking tenders on a residence on McDonald street for Mrs. G. Nagy.—Darling, Pearson & Over, architects, will receive tenders up to 18th inst. for erection of a

warehouse on Princess street.—Plans have been prepared and tenders taken by H. S. Griffith, architect, for a frame residence for D. Manson and a brick residence on stone foundation on Wellington Crescent for E. Winkler.—James Chisholm is this week taking tenders on a frame residence on Donald street.—The congregation of St. Paul's Presbyterian church have decided to erect an addition and remodel the present building.—Plans have been completed for the new Immigration Hall to be built in this city. It will be 200x60 feet, 4 stories and basement, first storey of stone and balance of brick, the stone and brick to be of local production. The plans were prepared by D. Ewart, chief architect of the Department of Public Works.

OTTAWA, ONT.—It has been decided to erect the new Archives building for the Dominion Government on a site near the Government Printing Bureau. It will be a 3-storey structure, with steel fittings throughout.—The old saw mill of Gilmour & Hughson at Chelsea has been purchased by J. Wilcox & Co., of Montreal. It is reported that English capitalists may utilize the water power at Chelsea for pulp mill purposes.—The Hygienic Ice Co. will let contracts shortly for the erection of their building on Nicholas street. The ice storage building will be 180 x 50 feet, with tower 30 x 80 feet and 55 feet high. James A. McCullough is the promotor of the company.—F. Gelnas, Secretary Department of Public Works, wants tenders by September 6 for the construction of a wharf at North Gut, St. Ann's, Victoria County, N.S. Plans at above Department, on application to postmaster at North Gut, and at office at C.E. W. Dodwell, resi-

dent engineer, Halifax.—Building permits issued last week: J. U. Vincent, brick veneered dwelling, east side Sussex street, \$2,700; Hugh McGuire, brick veneered house, east side Dalhousie street, \$1,200; A. E. Shaver, two brick houses, south side of Rideau street, \$1,500.—The Minister of Marine and Fisheries will construct 3 factories in the Maritime Provinces for the reduction of dogfish offal into oil, glue, etc. The factories will cost about \$9,000 each.

TORONTO, ONT.—Darling & Pearson, architects, 2 Leader Lane, invite tenders up to August 25th for all labor and material required in the erection of a brick building for the Canadian Bank of Commerce at Cayuga, Ont.—D. D. Mann, of Mackenzie, Mann & Co., has purchased the property at northwest corner of St. George street and Lowther avenue and will build a fine residence on the site.—A. Harvey, architect, Manning Chambers, wants tenders for brick work of two houses on Hepburne street.—Tenders are wanted at 325 Howland avenue for brickwork of pair of houses.—The Board of Control is asking for tenders up to 23rd inst. for the excavation, piling and laying of 5,185 feet of 6-foot steel conduit on Toronto Island, between the shore crib and the proposed tunnel shaft in Toronto Bay, together with valves and flexible and expansion joints. Tenders are also asked up to same date for construction of a tile pipe sewer on Hallam avenue, from Preston to Delaware avenue.—Plans of sewer construction to be undertaken at Palmerston, Ont., may be seen at the office of John Galt, C.E., this city. Tenders close August 29th.—A waterworks and sewerage system is to be constructed

at Portage la Prouve, which are on view at Chipman, the tenders must be invited by the 17th inst. for cast-iron pipe systems to be constructed in Montreal. The work is John Galt's. The contractor has instructed the architect to prepare racks in this city.—A. Willis, 34, tenders for brick to be built on street.—E. J. shortly award tender for power house Toronto & Niagara Falls, Ont.—Tenders for building at south-west corner of Court streets and Rolph, Smith & Co. into a ment.—Build granted as follows: Company, four York, on south \$60,000; E. J. warehouse, near Wellington, cost \$20,000; send, two-storey stable, 21 to \$9,000; W. J. dence, 85 Bedford street, H. McFaul, the residence, 474 \$5,000; S. B. two and one-half dwellings, 69 cost \$6,000; J. detached two-storey, Concord \$5,000.

## CONTI

VICTORIA at Port San contractor.

DALHOUSIE island at entrance contractor.

GLACE BAY D. McDougal contractors.

LITTLE C skating and C & Sons, contractor.

STURGEON for Charles B Charles Britt

FRASERV castings, etc. Gaudry & Co

BARRY'S of wharf for D. McRae, contractor.

## JOHN

Mem. S

## CONSUI

Dorms, Mill Room 41 20 King St. Telephone

J. A. L. WADD

Mem. Can. St. Mem. Inst. C. Mem. Am. St.

## Wade

Consulting

KA

Canadian Head Manning C Montreal Of

WE STOCK

# EVERYTHING

That a Contractor Requires . . . .

. . . . AND AT RIGHT PRICES

Genuine K & J Wheel and Drag Scrapers, Marion Steam Shovels and Ballast Unloaders, Dominion Wire Ropes, Blocks and Fittings, Robert's Velocipedes, Hand Cars, Lorries, Push Cars.

## F. H. HOPKINS & CO.

NEW IMPERIAL BANK BLDG.

Successors late James Cooper

.....MONTREAL

**PORTLAND CEMENT, HYDRAULIC LIME, CHINA CLAY**  
**E. FREEMAN, 20 Bucklersbury, LONDON, ENG.**



Sole Agent for U.K. and Colonies for Oldest Continental Works



Supplying to Contracts on the Principal Railways, Large Sewage and Sea Defence Works, etc., in England. Will be Pleased to Quote to the Wholesale Trade Only.

CORRESPONDENCE INVITED FOR CONTROL OF BRANDS

at Portage la Prairie, Man., from plans which are on view at the office of Willis Chipman, the chief engineer, this city. Tenders must be in by September 7th.—It is understood that tenders will shortly be invited by the Dominion Government for cast-iron piping for the pneumatic tube systems to be constructed in this city and Montreal. The chief engineer for the work is John Gal, C.E. and M.E., of this city.—The Department of Militia has instructed the Department of Public Works to prepare plans for the new barracks in this city for the permanent corps.—A. Willis, 34 Adelaide street east, wants tenders for brick work of a pair of houses to be built on west side of Crawford street.—E. J. Lennox, architect, will shortly award the contracts for the new power house and sub-station of the Toronto & Niagara Power Co. at Niagara Falls, Ont.—The stone and brick building at south-west corner of Church and Court streets has been purchased by Rolph, Smith & Co., who will convert it into a lithographing establishment.—Building permits have been granted as follows: Merchants' Union Company, four-storey brick factory, near York, on south side of Wellington, cost \$50,000; E. J. Dignum, five-storey brick warehouse, north-west corner Bay and Wellington, cost \$17,000; John Townsend, two-storey brick and stone livery stable, 21 to 25 Yorkville ave., cost \$9,000; W. J. Fleury, two-storey residence, 85 Bedford road, cost \$8,000; Dr. H. McFaul, three-storey and attic brick residence, 474 Dovercourt road, cost \$5,000; S. B. Coon, pair semi-detached two and one-half storey stone and brick dwellings, 69 and 71 Macpherson ave., cost \$6,000; John Hambleton, pair semi-detached two-storey and attic brick dwellings, Concord ave., near Dewson, cost \$5,000.

**CONTRACTS AWARDED.**

**VICTORIA, B.C.**—Repairing wharf at Port San Juan: Herman Hogland, contractor.  
**DALHOUSIE, N.B.**—Light house on island at entrance to harbor: P. B. Troy, contractor.  
**GLACE BAY, N.S.**—Residence for D. McDougall: Armstrong & Sutherland, contractors.  
**LITTLE CURRENT, ONT.**—Large skating and curling rink: George Shaw & Sons, contractors.  
**STURGEON FALLS, ONT.**—House for Charles Bragdon, of Pittsburg, Pa.: Charles Britton, contractor.  
**FRASERVILLE, QUE.**—Piping, castings, etc., for waterworks: H. L. Gaudry & Co., Quebec, contractors.  
**BARRY'S BAY, ONT.**—Construction of wharf for Dominion Government: J. D. McRae, of Eganville, contractor.

**JOHN S. FIELDING**  
 Mem. Soc. C. E. West Penn. '87.  
**CONSULTING ENGINEER**  
 Dams, Mills, Bridges, Machinery.  
 Room 41, National Trust Building,  
 20 King Street East, TORONTO, ONT.  
 Telephone Main 3488.

**J. A. L. WADDELL**, Mem. Can. Soc. C. E.  
**IRA G. HEDRICK**, Mem. Can. Soc. C. E.  
 Mem. Inst. C. E. Mem. Inst. C. E.  
 Mem. Am. Soc. C. E. Mem. Am. Soc. C. E.

**Waddell & Hedrick**  
 Consulting Bridge Engineers  
 KANSAS CITY, MO.  
 Canadian Head Office:  
**Manning Chambers, TORONTO, ONT.**  
 Montreal Office: 185 St. James Street.

**ORILLIA, ONT.**—Timber dam in connection with municipal plant at Ragged Rapids: Joseph Battle, of Thorold, contractor.

**BROCKVILLE, ONT.**—Improvements to Neill's store building on King street: White & Chapman, successful contractors.

**BATTLEFORD, N.W.T.**—Canadian Northern bridge over the North Saskatchewan river: Canada Foundry Co., Toronto, successful contractors.

**HAMILTON, ONT.**—M. A. Piggott, of this city, has been awarded the contract for the construction of four sections of the Guelph and Goderich Railway, an extension of the C.P.R. from Guelph.

**COLLINGWOOD, ONT.**—The James Smart Manufacturing Co., of Brockville, have secured the contract for heating and ventilating the East Ward public school and the Y.M.C.A. building in this town. Kelsey generators will be used.

**OTTAWA, ONT.**—New hall for St. George's Society: Stone and brick work, C. Robertson; carpentry, A. Richards; painting and glazing, W. J. Carson.—French national hall: Pepin & Co., Montreal, successful contractors.

**VANCOUVER, B. C.**—Two storey brick block for C. W. Doud, of Chapfield, Minn.: Crowe & Wilson, contractors.—Block on Hastings street for Center & Hanna and Mrs. Caldwell: Mr. McLeod, contractor, cost \$15,000.

**THAMESVILLE, ONT.**—For construction of granolithic walks tenders were received as follows: A. E. Jones, walks 8½ cents per foot, crossings 11 cents; Everitt & Higgins, 9½ and 11 cents; G. H. Conibear, 10½ and 13 cents; Morgan & Farrell, 10 and 12 cents; J. McBryden, walks 12 cents; Charles Hubbell, walks 8½ cents. The last named tender was accepted.

**OTTAWA, ONT.**—The Separate School Board last week awarded the following contracts: Wilbrod street school, H. Pepin, of Gatneau Point, \$8,950; Our Lady's school, Felix McCullough, \$17,700; hot water heating apparatus for Garneau school, Martel & Langelier, \$675. Contract for plastering will be let this week.—The Dominion Government have let the contract for an ice breaker for the Lower St. Lawrence to Fleming & Ferguson, of Great Britain, for \$272,500. Other tenderers were: Vickers, Sons & Maxim, \$303,780, after-

wards reduced to \$350,000; Armstrong, Whitworth & Co., \$335,000.

**BIDS.**

**OTTAWA, ONT.**—The following tenders were received for erection of Fat Stock Show building: Taylor & Lackie, \$10,748 for all interior carpenter work; \$3,157 for the poultry department only. Painting and glazing, William Howe, \$600; Joan Strang & Sons, \$475. Electrical work, Marchand & Co., \$347; O'Reilly & Murphy, \$317. Plumbing, McKinley & Northwood, \$339; Knox Bros., \$493. Galvanized iron work, McKinley & Northwood, \$117; MacFarlane & Douglas, \$107. Concreting, John Foley, \$165. In view of the high cost it was decided to award only the contract for the poultry department and for the electrical work. Taylor & Lackie were the successful tenderers for the former at \$3,157, and O'Reilly & Murphy for the latter at \$317.—Tenders were opened last week for the purchase of \$829,000 of city bonds. The Dominion Securities Co., Toronto, offered to purchase \$330,760 of 4 per cent. bonds at 97.01 and accrued interest providing the city would grant an option for sixty days upon the remainder of the 4 per cent. bonds at same figure. They also offered to buy the entire amount of the four per cent. bonds, namely, \$631,643.11, paying 96.01 and interest, and also to purchase the entire amount 3½ per cent. bonds, namely, \$108,329.73, paying therefor at the rate of 92 for the 3½ per cent. bonds due in 1912, 1913, 1914, and at the rate of 89½ and interest for those due in 1921, 1922, 1923 and 1924. Other offers were: Amelius Jarvis & Co., Toronto, 96 for both 3½ and 4 per cent. bonds; W. C. Brent, Toronto, 96 for \$62,000 of 4 per cent.; City and District Savings Bank, Montreal, 96 for \$16,000 of 4 per cent.; Robinson & Son, St. John, N. B., 97 for \$61,000 of 4 per cent. The City Treasurer will report on the different tenders.

George Menzies, of Owen Sound, Ont., is considering the question of installing a plant for the manufacture of cement blocks.

The Best Sand to withstand Fire is the Sand that is all Sand, namely, **Water Washed Sand.** It is the Best. It is the Cheapest. **SAND & DREDGING, Limited**  
 Tel. M. 457 John Street Dock, TORONTO

**PALMERSTON BOULEVARDE, Toronto**

is to be paved with the Bitulithic pavement. It has been laid in London, Chatham, Montreal and Glace Bay and contracts have been awarded to us for 16,000 sq. yds. in Walkerville, Ont., also for the Driveways around the Dominion Parliament Buildings in Ottawa. Write for particulars and estimates to

**The Warren Bituminous Paving Co., Limited**  
 Head Office: 164 Bay Street, TORONTO.

**"Giant Brand" Portland Cement**

Manufactured at BLUE LAKE Gives universal Satisfaction. Used exclusively on all work by the City of Brantford and other places  
**THE ONTARIO PORTLAND CEMENT CO., LIMITED**  
 Head Office: Brantford, Ont. Long Distance Phone 194.

**THE LAKEFIELD PORTLAND CEMENT CO., LIMITED**

Manufacturers and Sales Agents of **MONARCH BRAND PORTLAND CEMENT**  
 One grade only—Straight Portland. Unexcelled for Strength, Color and Uniformity. **The Recognized Standard Canadian Brand**  
 Used by the Dominion Government, large Corporations and leading Contractors throughout Canada Phone, wire or write for prices to **THE LAKEFIELD PORTLAND CEMENT CO. Limited, Lakefield, Ont.**  
 Long distance phone No. 29.

**COST OF MASONRY AND STEEL.**

In a paper on masonry arches which appears in *The Transit*, published by the Engineering Society of the University of Iowa, Mr. C. H. Smith gives the following data showing the relative sizes and costs of masonry and steel bridges:

system of sloping from the middle to sides is needlessly expensive, and a concave form, in which the slope would be from sides to middle, would be better in every respect. There would be a saving in first cost, as not only could the gully drains be entirely dispensed with, but half the num-

traffic the whole of the mud and grease could be washed down into the central and natural channel of the carriage way. The slope or fall of the road could be considerably less than it now is, and with heavy, slow traffic kept in the centre vehicles hailed by the foot passengers would have to draw across the road to pull up. The cost of such a road would be much more lasting and require less repairs. Provision could be made for access to all sewers, gas and water pipes.

As evidence of the possibilities before concrete as a building material much interest is being displayed at present in a new armoured concrete, fireproof power building at Cincinnati, Ohio. This building is 68 x 335 feet long, nine stories high in the rear and seven stories only above the street in the front. The footings, walls, columns, girders, beams, floors, roof, pent houses, tanks, partitions, hot air ventilating ducts, as well as shafts, chimneys and stairs, are of reinforced concrete, not a particle of wood, brick, or structural steel being used in the building. When completed it will be the most incombustible building ever constructed.

**MASONRY BRIDGES.**

BRIDGES	Length	Width	Cost	Cost Per Sq. Ft. of Area
Elkader, Ia. (s) .....	246'	34'	\$13,000	\$ 1.67
Hyde-Park-on-Hudson (s) .....	90'	28'	12,500	4.96
Germany (hinged c) .....	262'	13'	4,285	1.25
Pittsburg (s) .....	341'	85.5'	112,201	3.84
Cornell University (s) .....	63'	33'	6,260	3.00
including removal of old bridge.				
Over Danube (3 hinged c) .....	144'	13'	5,310	2.83
Belleville, Ill. (c) .....	85'	52'	10,500	2.37
Cincinnati (m. c) .....	70'	32.5'	7,130	3.13
Over Danube (hinged c) .....	164'	25'	10,898	4.12
Stockbridge, Mass. (m. c) .....	100'	7'	1,475	2.10
Cour. St. Arch N. Y. (s) .....	510'	64'	137,937	4.22
Andrews St. N. Y. (s) .....	280'	60'	72,557	4.31
Kankakee, Ill. (s) .....	64'	55'	2,700	0.76
New Brunswick, N. J. .....	818'	36'	99,000	3.36
Baltimore, Md. .....	480'	100'	319,915	6.66
Mt. Vernon, Va. .....	220'	62'	30,000	2.19
Gour Noir, Fr. .....	358'	3'	67,000	6.24
Topeka, Kan. .....	625'	40'	150,000	6.00
Le Mans, Fr. .....	sq. ft. = 5382'			1.04
Wissahickon, Pa. .....	510'			3.00
Over the Eoz .....	147.6'			3.20
Over the Eoz .....	67.6'			2.09
Over the Glatt .....	68.2'			1.46
Over the Murr .....	139.7'			2.43
Waterloo .....	560'	54'	60,000	1.98
<b>STEEL BRIDGES.</b>				
Piategirder, Monmouth, Ill. ....	105' 8"	9'	5,450	5.73
Paris over Seine. ....	509'	63.75'	404,000	11.14
On Chicago and Saline creek, steel, via Eastern R. R., (Grasshopper creek, via. ....	845'	9'	44,700	5.87
Kinza Viaduct in Pa. ....	650'	9'	38,000	6.49
Lightning Creek through G. ....	2050'	10'	112,000	5.46
Little Missouri R. Deck span .....	102'	13'	64,000	4.82
Denver Viaduct .....	102'	9'	48,000	5.22
Messalin Bridge .....	2105'	50'	425,000	4.03
Iowa City Bridge .....	121'	16'	4,800	2.48
Mesa City, (new) .....	350'	17'	10,450	1.65

**CONCRETE AS A BUILDING MATERIAL.**

Concrete has now become one of the most important materials employed in building, and it bids fair to become even more used than now. There are dozens of places where this material could be used instead of wood, brick or stone, to advantage. Why cannot our roads and highways be laid with cement instead of paving stones, asphalt and other materials?

In the case of town roads the ordinary

ber of gullies would suffice. Channels, too, in the case of macadam or gravel roads, would not be needed on either side, as heavy traffic would have no tendency to gravitate to the curb, and for the same reason a lighter curb would answer the purpose. In wet weather there would be no channels running with mud and water for the unwary pedestrian to step into, no heaps of slush piled up for removal against the curb, and by running a perforated hose pipe along the curb clear of the

Building operations in Winnipeg are very brisk, although at the opening of the season prospects were not as bright as they have since proved to be. All the architects are exceedingly busy and there is every indication that they will continue so until the building season closes. It is pleasing to be able to note that though the ranks of the architects have been considerably augmented by new arrivals this season, the amount of work executed by the older architects in the city has not suffered, but on the contrary shows a decided increase, while all new comers are kept busy. The Carnegie library, under the charge of Mr. S. Hooper, is making rapid progress towards completion.

**McGREGOR & McINTYRE, LIMITED**

67 to 91 Pearl Street, Toronto, Ont.

**STRUCTURAL IRON WORKS**

Fire Escapes, Library Racks, Sidewalk Door, Jail Cells, Iron Stairs, Railings, Etc. tc.

WRITE FOR ESTIMATES.

**The Rotary Man Power Concrete Mixer**

Capacity five cubic yards per hour.

Continuous in Action.

Specially adapted for Sidewalk and Street Work, and all classes of concrete work where a thorough mixture with but small capacity is required.

Other Mixers and Concrete Mixing Machinery.

Send for Catalogues.

**E. F. DARTNELL,**  
Montreal.**Surveying  
and  
Drawing  
Instruments***Best English Quality*

Manufactured by

**A. G. Thornton**

Manchester, Eng.

Surveyors' and  
Engineers' SuppliesWrite Us For Catalogue  
and Prices

The

**C. H. MORTIMER  
PUBLISHING CO.**

of Toronto, Limited

AGENTS FOR CANADA

Confederation Life Bldg., TORONTO  
Imperial Building, MONTREAL

The Hanover

H

Manuf

"SAUGEET"

P

Pav

Granite sets f

to any shap

Building

Quarries,

Addr

JOS. BRU

TUNNEL

Steel B

Works: For

HIC

Roofs, St

Iron

ARTIFICI

SIDE

CORPORATI

The Silic

C

WALTER M

General Man

T.A.

PURVEY

Munici

Corpor

Archite

Engine

Mines

Railwa

Buildin

GONTE

Stackpo

Patent

Becau

11 Swr

cliaon.

less gea

reasons

Established 1898.  
**The Hanover Portland Cement Co., Ltd**  
 Hanover, Ontario.

Manufacturers of the Celebrated  
**"SAUGEEN" Brand of PORTLAND CEMENT**  
 Prices on application.

**Paving Granite**

Granite Sets for Street Paving — CURBING cut to any shape ordered. — Fine Rich Colors for Building and Monumental Purposes.  
 Quarries, St. Philippe d'Argenteuil, P.Q.

Address communications to  
**JOS. BRUNET - COTE DES NEIGES, MONTREAL**

**TUNNEL CITY BRIDGE & IRON WORKS**

Steel Bridges and Structural Work.  
 Works: Port Huron, Mich., and Sarnia, Ont.  
**HIGHWAY BRIDGES**  
 Roofs, Steel Buildings and Structural Iron Work of all Descriptions.

**ARTIFICIAL STONE PAVEMENTS**

**SIDEWALKS A SPECIALTY**  
 CORPORATIONS Will do well to consider our work and prices before letting contracts  
**The Silica Barytic Stone Company of Ontario, Limited.**

WALTER MILLS General Manager. Head Office: **INGERSOLL, ONT.**

**T. A. Moppison & Co.**

**PURVEYORS TO** ROAD MACHINERY  
 Municipal Corporations STEAM ROAD ROLLERS  
 Architects STEAM AND GASOLINE  
 Engineers FIRE ENGINES  
 Mines BRICK AND STONE  
 Railway and CONCRETE STONE  
 Building ROOFING GRAVEL  
**CONTRACTORS** ROCK DRILLS  
 BOILERS AND ENGINES  
 CONTRACTOR'S PLANT

204 St. James Street  
**MONTREAL**

**PORTLAND CEMENT**

**SAMSON BRAND MAGNET BRAND**

MANUFACTURED BY

**THE OWEN SOUND PORTLAND CEMENT COMPANY, Limited, Owen Sound, Ont.**  
 Works at **SHALLOW LAKE, ONT.** Write us for prices

**THE CANADIAN PORTLAND CEMENT COMPANY, LIMITED**

Manufacture **"RATHBUN'S STAR" Brand**

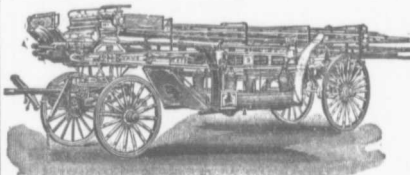
The Leading Canadian Portland Cement.

Capacity of Works: **500,000 Barrels Per Year.**

**The RATHBUN CO.** St. Lawrence Portland Cement Co.  
 310-312 Front Street West, TORONTO, ONT. 202-203 Board of Trade Building, MONTREAL.

**LIGHTNESS, STRENGTH AND ECONOMY**

Seagrave Patent Trussed Ladders, Trussed Aerial, City Service and Village Hook and Ladder Trucks, Combination Hook and Ladder Trucks and Chemical

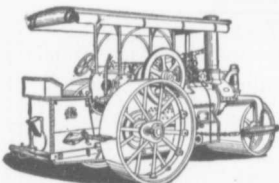


Engines, Trussed Trucks and Hand Pumps, Combination Hose Wagons and Chemical Engines, Hose Wagons, Combination Hook and Ladder Trucks and Hose Wagons, Chemical Engines, Fire Extinguishers, Hose Reels, Patrol Wagons, Ambulances, Specialty Wagons, Patent Sleigh Runners, and other Modern Fire Fighting Tools.

Prompt attention given all inquiries. All goods built to order.  
 Long Distance Phones 686 and 684 **W. E. SEGRAVE, WALKERVILLE ONT.**

**"WATEROUS"**

**ROAD MACHINERY AND FIRE APPARATUS**



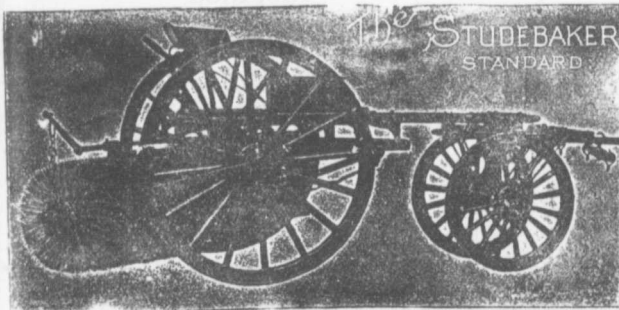
**FIRE ENGINES** in five sizes, with a full line of fire-fighting goods

We Rebuild other makes of Fire Engines with our patent Boiler.

**BRANTFORD PITTS DOUBLE ENGINE STEAM ROAD ROLLER**

IN THREE SIZES—10, 12 and 15 ton.  
 CORRESPONDENCE SOLICITED.

**HUGH CAMERON & CO.,** Selling Agents, 72 Queen St. West, Manning Chambers, **TORONTO**



**Studebaker Sprinkler**  
 (PATENT IMPROVED.)

Does not clog or get out of order. Greatest width of spray Can be graded from driver's seat to any volume. We also make an . . .

**IMPROVED VERTICAL SPRAY**

for Pavements.

**Geo. Heaman, Mnfr., London, Ont.**

**Street Sweeping Machine** is the Standard of Perfection

Stackpole Patent Improved Because no sweeper so effectually does the work for which it is designed as "The Studebaker." It Sweeps Clean. No sweeper is constructed with the same degree of care and mechanical precision. It Wears Well. "The Studebaker" has the smallest number of working parts, and has less gearing than any other sweeper made. It is free from all unnecessary complications. With reasonable care it does not get out of order. Send for complete descriptive catalogue.

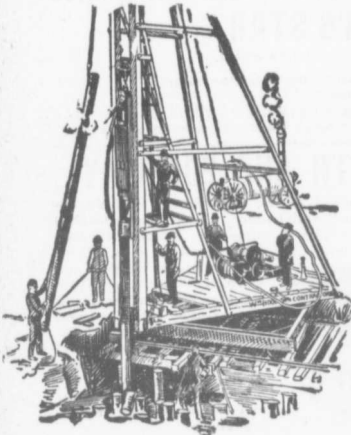
# The Canadian Bridge Co., Limited

WALKERVILLE, ONT.

MANUFACTURERS OF

## RAILWAY AND HIGHWAY BRIDGES

Locomotive Turn Tables,  
Roofs, Steel Buildings and  
Structural Iron Work of all descriptions



### PILE DRIVING

on land or water by Steam Pile Drivers or Drop Hammers.

**Portable Boilers  
Hoisting Engines  
Pumping Machinery**

**TO LET**

Bridge Building, Trestle Work, Wharves,  
Dams, Diving Submarine Work and  
General Contracting.

**WM. HOOD & SON**  
10 Richmond Sq. - MONTREAL

A TRIUMPH OF THE METALLURGIST'S ART

### MANGANESE

Anti-Friction  
Babbitt Metal.

Syracuse Smelting Works, Montreal.

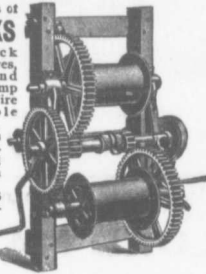
### Notice to Contractors.

The Niagara Falls Machine &  
Foundry Co., Limited,  
Niagara Falls, Ont.,

are making a speciality of improved  
**HOISTING AND BUILDING ENGINES.**  
Write for Prices.

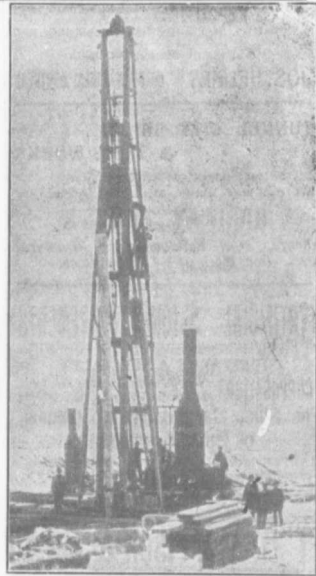
Manufacturer of  
**DERRICKS**

and Derrick  
Irons, Sheaves,  
Hooks and  
Chains, Stump  
Pullers, Wire  
and Cable  
Stretchers,  
Tackle Blocks,  
Material Ele-  
vators, and  
Dealers in  
HOISTING  
ENGINES  
and Con-  
tractors'  
Supplies.



National Hoist & Machine Co.  
463 West 22nd Street, Chicago

If you want to reach Muni-  
cipalities advertise in the  
**CONTRACT RECORD.**



### PILE DRIVING

and Foundation Work.

By 5-ton Automatic Steam Pile Hammer,  
Water Jet or Drop Hammers, Dock Build-  
ing, Submarine Work and Dredging.

**BUILDING MOVER AND WRECKER**

General Contracting.

**JNO. E. RUSSELL, - Toronto**  
908 Queen St. E. - Phone M. 207.

## Pumps for Waterworks

Waterworks Systems  
Installed

Steam, Hydraulic, Electric,  
Gasoline, Air Lift and  
Automatic Rams.

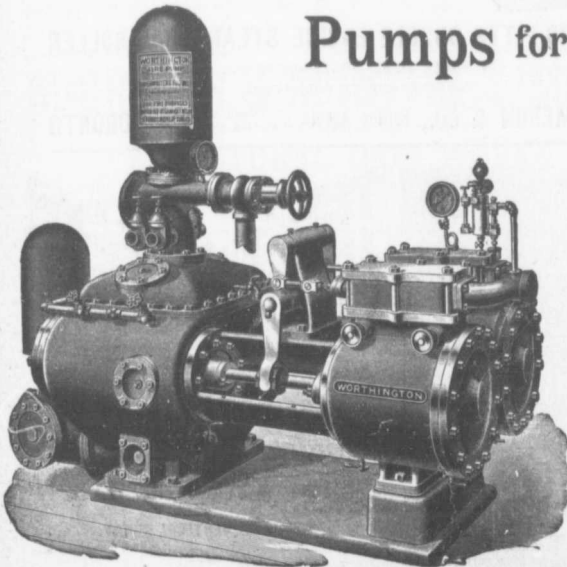
**Steam Boilers and  
Filters**

Write for Prices and Particulars

### The John McDougall

CALEDONIAN IRON WORKS CO., LIMITED

MONTREAL, P.Q.





### DEBENTURES

Municipalities contemplating the issue of Debentures will find it to their advantage to communicate with

**G. A. STIMSON & CO.**

Investment Dealers  
24 and 26 King St. W. TORONTO

### THE GREY AND BRUCE PORTLAND CEMENT COMPANY

of Shallow Lake, Limited.

Manufacturers of  
BRAND OF

### "HERCULES" PORTLAND CEMENT

Very finely ground. Unsurpassed for Sidewalks, Floors and all work requiring the Highest Grade of Portland Cement. For prices address.

A. D. CREASOR, Sec'y-Treas.  
Head Office, Owen Sound, Ont.

Please mention this paper when corresponding with advertisers.

#### THE BEST LIGHT

For Contractors, Railways, Mines, Steamboat Lines, Etc.

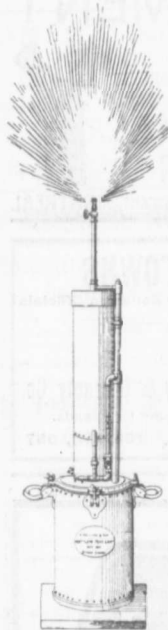
is the

### HOLLAND PORTABLE LIGHT

Cheaper to operate and cheaper to buy than any other gives 300 candle-power of light and costs less than 3 cents an hour to operate. Suitable for any cut-of-door work in any weather. Delivered at any railroad station in Canada for \$42.00.

### HOLLAND PORTABLE LIGHT WORKS

17-19 Busby Lane, Montreal, P. Q.  
Phone Main 2399.  
P. O. Box No. 229



## THE PHOENIX BRIDGE & IRON WORKS, LIMITED MONTREAL GENERAL STEEL CONTRACTORS

Large Stock I BEAMS, CHANNELS, ANGLES, TEES, ZEES and PLATES always on hand.

## Dominion Bridge Co., Ltd.

P. O. Address, MONTREAL, P.Q.  
Works at LACHINE LOCKS, P.Q.

## STEEL BRIDGES

For Railways and Highways  
Piers, Trestles, Water Towers  
Tanks, Buildings, Roofs, Girders,  
Beams and Columns

Toronto Agent: GEO. E. EVANS,  
38 Canada Life Bldg., TORONTO, ONT



### The Highest Grade of American Portland Cement is "Iron Clad"

It is the most finely ground (97 per cent. passing No. 100 sieve) and most uniform, having a Ten Years' Record. Used on some of the most important work in Canada and U. S. A.

Prices on application to all dealers, or to

The Glens Falls Portland Cement Co.,  
224 Board of Trade, MONTREAL, P. Q.  
W. A. COOK, Agent

## PORTLAND CEMENT

T. M. Morgan

Manufactures the



CRESCENT & DIAMOND BRANDS



AS GOOD AS THE BEST FOR ANY PURPOSE

Office and Works: Longue Point, MONTREAL, QUE.  
Long Distance Phone R. 436 Ring 2.



## "Lehigh" Portland Cement

Capacity 11,000 Barrels every Day in the Year.

For Sidewalks and all other work requiring the highest quality Portland Cement Used by the U. S. Government and the largest contractors and users of Portland Cements in the United States.

Absolutely the most popular Cement in Canada on account of its merits

For Prices, etc., address

**THORN CEMENT CO. - Buffalo, N. Y.**

## The Locomotive and Machine Company OF MONTREAL, LIMITED

NEW YORK OFFICE:  
25 BROAD STREET  
N. Y.

## Structural Steel

FOR ALL PURPOSES

WORKS:  
LONG POINT  
MONTREAL

Principal Office: Imperial Bank Building, MONTREAL

**NEW COMPANIES.**

Dominion Roller Screen Company, Limited, Toronto, incorporated, capital \$150,000. Directors, Ford Addison Mansell, Elmer Sheetz, Jabez Nathan Lynde, Cephas Thomas Rodman, and William John Courts.

Labor Temple Company, Limited, Toronto, incorporated, capital \$40,000. Directors, James Simpson, Alfred John Raynor, John Hill Huddleston, John Alexander McIntyre, George Cooper, Frederick John Wilson, Samuel Halfyard Garland and Robert Glocking.

Alpena Oil and Gas Company, Limited, Chatham, Ont., incorporated, capital \$100,000. Directors, Samuel Thomas Bell, Solomon Eagle, Thomas Robinson, James Rutherford, and Richard Lawrence Gosnell.

Victor Varnish Company, Limited, Toronto, incorporated, capital \$40,000. Directors, Arthur Carson McMaster, George Reginald Geary, and William Patrick Brodie.

Laurentian Club, Limited, Ottawa, incorporated, capital \$40,000. Directors, Gordon Cameron Edwards, William Alexander Cameron, Robert George Ca-

meron, John Lorn McDougall, jr., and others.

Stratford Chair Company, Limited, Stratford, Ont., incorporated, capital \$60,000. Directors, William Hall Crowe, Alfred James McPherson, Frank Augustus Nichols, Arthur Murray Panton, and John Alexander McFadgen.

International Varnish Company, Limited, Toronto, incorporated, capital \$100,000. Directors, Herman Rosenberg, Max Wolf, Wm. Rosenberg, Ferdinand Wolf Herz, and Oscar Rosenberg.

Godson Contracting Company, Limited, Toronto, incorporated, capital \$100,000. Directors, Margaret Godson, Frederick William Godson, and Arthur Ferguson Godson.

Imperial Leather Company, Limited, Toronto, incorporated, capital \$40,000. Directors, Charles Adelbert Crawford, Thomas Lyle Bray, and Henry Hunter.

Stewart, Howe & Meek Company, Limited, Toronto, incorporated, capital \$100,000. Directors, Arthur James Stewart, Lucian Flander Howe, and Charles Samuel Meek.

Goderich Cement Brick Company, Lim-

ited, Goderich, Ont., incorporated, capital \$40,000. Directors, George Acheson, James Clark, James Alfred McIntosh, Wm. Proudfoot, and Job Parsons Brown.

Typograph, Limited, Windsor, Ont., incorporated, capital \$80,000. Directors, James Benjamin Allen, Frank Herbert Macpherson, and Sylvester B. Best.

Railway Spring & Supply Company, Limited, Montreal, incorporated, capital \$49,000; to manufacture and deal in railway mill, and contractors' supplies of all kinds. Incorporators, James Rogers, contractor; Cornelius Coughlin, exporter; J. A. Rowan, manufacturer; F. D. Shallow, publisher, and P. M. Wickham, insurance manager, all of Montreal.

Canadian Lowe Coke & Gas Company, Limited, Montreal, incorporated, capital \$1,000,000. Promoters, A. W. G. McAlister, advocate; W. J. Henderson, accountant, Montreal, and others.

St. Lawrence Coal Company, Limited, Montreal, incorporated, capital \$500,000, to mine, quarry, and trade in coal, iron, copper, and other minerals. Promoters, Charles Brandeis, electrical engineer, G. A. Forbes, broker, and others, of Montreal.

**THE CANADIAN INSPECTION COMPANY, LIMITED**

Main Office and Laboratories:  
 146 St. James Street, MONTREAL  
 SPECIALTIES: INSPECTION OF RAILS and all material for BRIDGES, BUILDINGS, and other structures, cast iron pipe, wood and steel railroad cars.  
 MANUFACTURE AND ERECTION.  
 Expert examination and reports, chemical analyses and physical tests of all kinds. Cement Testing.

**FIREMEN'S LADDERS  
 —AND—  
 LADDER TRUCKS**

We make the lightest, quickest, strongest and cheapest. Every Town and Village needs them and can afford them. They will save 50 times their price in insurance premiums. Write for circulars and quotations.

**THE WAGGONER LADDER CO., Limited**  
 LONDON - - - ONT.

**PORTLAND CEMENT**



SEWER PIPES  
 FIRE BRICKS  
 FIRE CLAY  
**ALEX. BREMNER**



50 Bleury Street, MONTREAL



**PROGRESSIVE TOWNS**

Use Guaranty Bonds on Officials

We make a specialty of guaranteeing Municipal Officers.  
 Write Us.

The United States Fidelity & Guaranty Co.,  
 A. E. KIRKPATRICK, Manager for Canada.  
 6 COLBORNE STREET, - - - TORONTO, ONT.

THE STANDARD Where Cement is Known. IN ALL COUNTRIES is Known.

**ALSEN**  
 "THE ABSOLUTELY SAFE CEMENT"  
 45 BROADWAY, NEW YORK

Yearly Capacity Over Two Million Barrels

August 17, 1904

**WILLIAMS**  
 H. M. Can. WATERWORKS  
 Reports, 103 E. R. E. CONS  
 Waterworks Municipality Granolithic Electric Draining Coal Ho. Plans, S. Constru  
 Canada I  
**WM. H.**  
 M. AM. CONSULT  
 Found  
**JAMES**  
 Civil Examinat Supervis Powers  
 P. O. Box 877 Dorc  
**RO**  
 Consult Su  
 Water Plants, Estima  
 80 ST. FR  
**E. VON**  
 Indus Light Sewer Garb Muni  
 507 Mannin  
**J. J.**  
**B.A.**  
 Consu  
 O  
 E  
 ELE  
 16 K  
**ROD**  
 A.M. Ca  
**CONS**  
 Electr Steam Pow Estim  
 82-83 Ja  
 Long Dist  
 Cable A

MUNICIPAL ENGINEERS, CONTRACTORS AND MATERIALS

**WILLIS CHIPMAN**

Hon. Grad. McGill University.  
M. Can. Soc. C.E. M. Am. Soc. C.E.  
Mem. Am. W.W. Ass'n.  
**WATERWORKS, SEWERAGE WORKS, GAS  
WORKS, ELECTRIC LIGHT AND  
POWER PLANTS**  
Reports, Surveys, Construction, Valuations  
**103 BAY STREET - TORONTO**

**R. E. SPEAKMAN, C.E.**

A. M. Inst. C. E., 1878.  
**CONSULTING ENGINEER**

Waterworks, Sewerage and Sewage Disposal.  
Municipal Improvements.  
Granolithic Pavements.  
Electric Light Plants.  
Drainage and Irrigation of Land.  
Coal Handling Plant and Machinery.  
Plans, Specifications and Estimates.  
Construction and Valuations.

Canada Life Building - TORONTO

**WM. H. BREITHAUP, C.E.**

M. AM. SOC. C.E. M. CAN. SOC. C.E.  
**CONSULTING STRUCTURAL ENGINEER**

Foundations, Bridges, Buildings.  
BERLIN, ONT.

**JAMES C. KENNEDY,**

MEM. CAN. SOC. C. E.  
**Civil and Hydraulic Engineer**  
Examinations, Reports, Plans, Estimates,  
Supervision of Construction of Water  
Powers, Waterworks, Sewerage, etc.  
P. O. Box 131, HAWKESBURY, ONT., and  
877 Dorchester Street, MONTREAL, QUE.

**ROSS & HOLGATE**

**Consulting and  
Supervising Engineers**

Water Powers, Electric Light and Power  
Plants, Structural Work, Reports,  
Estimates, Arbitrations.  
80 ST. FRANCOIS XAVIER ST. - MONTREAL

**E. VON DER OSTEN & CO.,**

**Consulting Engineers**  
Industrial Plants, Waterworks,  
Lighting and Power Plants  
Sewerage and Sewage Disposal  
Garbage Reduction Plants  
Municipal Improvements  
73 Queen Street West,  
507 Manning Chambers, TORONTO, ONT.

**J. J. COLLINS**

B.A.S., C.E., M.E., E.E.  
**Consulting Engineer**  
Ottawa, Ont., Canada

**EDWARD B. MERRILL**  
**ELECTRICAL & MECHANICAL  
ENGINEER**  
16 KING ST. W. TORONTO

**RODERICK J. PARKE**

A.M. Can. Soc. C.E. A.M. Amer. Inst. E.E.  
**CONSULTING ELECTRICAL ENGINEER.**  
Electrical Light and Power.  
Steam Plants, Gas Power Plants, Water  
Power Plants.  
Estimates, Tests, Reports, Valuations.  
82-83 James Building - TORONTO, CAN.  
Long Distance Telephones-Office and Residence  
Cable Address "Rodparke" (W. U. Code.)

**John H. Jackson**

**CIVIL ENGINEER**  
WATER POWER, ELECTRIC RAIL-  
WAYS, STRUCTURAL STEEL.  
Niagara Falls, Canada  
Associated with Charles H. Mitchell,  
C. E., Hydraulic Engineer.

**CHARLES BRANDEIS**

A. M. Can. Soc. C. E., A. M. Amer. Inst. E.E.  
Mem. Amer. Electro-Chemical Soc., Etc.  
**CONSULTING ENGINEER**  
Estimates, Plans and Supervision of Hydraulic  
and Steam-Electric Light, Power and Railroad  
Plants. Specifications, Reports, Switchboard  
Designs, Complete Factory Installations, Elec-  
tric Equipment of Mines and Electro-Chemical  
Plants.  
Long Distance Telephone Main 32-6.  
Cable Address: Brandeis-Montreal.  
W. U. Code, Univ. Edition.  
Liverpool & London MONTREAL  
& Globe Building.

**CEMENT TESTING**

**Dr. J. T. Donald**  
Official Analyst to the Dominion Government.  
Established 1880.  
Physical and Chemical Tests on all kinds of  
CEMENTS and RAW MATERIALS. Prompt  
returns and lowest rates consistent with accu-  
rate work.  
112 St. Francois Xavier Street, Montreal, Canada

**RAILS**

For Contractors, Switches, Gir-  
ders, &c.  
New and Second Hand.  
**LOCOMOTIVES & CARS**  
A  
W  
D  
John J. Gartshore  
83 Front St. West,  
Opposite Queen's Hotel.) TORONTO

**THE ONTARIO ASPHALT BLOCK CO., L'T'D.**

MANUFACTURERS OF  
**ASPHALT BLOCK PAVING**  
Information and samples furnished municipalities on application.  
Main Office: WINDSOR, ONT. Works: WALKERVILLE, ONT.

**'IMPERIAL BRAND' PORTLAND CEMENT**

You will surely admit that the best is none too good, and if you are  
requiring Cement give "IMPERIAL BRAND" a trial. We guarantee  
our product and can ship a quantity at once. Write for prices, etc., to  
**The Imperial Cement Company, Limited**  
OWEN SOUND, ONT.

**THE CANADIAN SEWER PIPE CO.**

MANUFACTURERS OF  
  
FOR  
**Sewers, Culverts and Water Pipes**  
*Inverts for Brick Sewers*

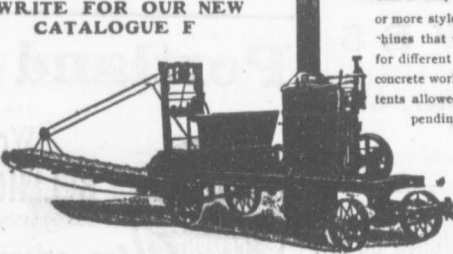
WRITE FOR DISCOUNTS  
ST. JOHNS, P.Q. HAMILTON, ONT. TORONTO, ONT.

**The Greatest Concrete Mixer Yet Made**

WRITE FOR OUR NEW CATALOGUE F

This is only one of 30 or more styles of machines that we make for different kinds of concrete work. 10 patents allowed, others pending

NUMBER OF PATENTS
35,664
672,934
675,053
675,056
675,037
698,182
698,910
699,667
699,668
701,312



Also  
Mortar and  
Asphalt Mixers

**DRAKE STANDARD MACHINE WORKS**  
Factory, 7-9-11-13 Garden Street, Chicago.  
Office an 1 Silesroom, 298-300-302 W. Jackson Bou 1  
Chicago, Ill., U. S. A.  
Eastern Agent, Walter S. King, 27 St. John's Place, Brooklyn, N. Y.

## MUNICIPAL DEPARTMENT

### LEGAL DECISIONS AFFECTING MUNICIPALITIES.

**TOWNSHIP OF WIGLE VS. GOSFIELD.**—The Court of Appeal, composed of Justices Moss, Osler, MacLennan, Garrow and MacLaren, at Osgoode Hall, Toronto, recently gave judgment in this case, which has been in the courts for the past seven or eight years. The facts of the Wigle Creek cases are as follows:—On the first of June, 1897, eight actions were brought against the township of Gosfield South claiming damages caused by No. 47 Tap Drain, constructed by Gosfield Township before its division into Gosfield North and Gosfield South, and claiming a mandamus to compel the township to construct a proper outlet to Tap Drain No. 47 and an injunction restraining the township from throwing water upon the plaintiffs' lands. Prideau Wigle and Mary H. Rae brought their actions in the High Court of Justice and Philip Wigle, Jonas Wigle, Alvin Wigle, Joshua Adams, E. A. Pulford and Theodore Wigle sued in the County Court of Essex. The whole eight actions were referred for trial to Thomas Hodgins, K.C., then Drainage Referee, who tried them on different dates running from March, 1898, to April, 1900. By his judgment he awarded Prideau Wigle \$400; Mary H. Rae \$300; Philip Wigle

\$40; Jonas Wigle \$38.70; Alvin Wigle, \$102; Joshua Adams \$115; E. A. Pulford \$75, and Theodore Wigle \$70 together with costs of the actions, all to be paid out of the general funds of Gosfield South. Gosfield South appealed from the judgment of Mr. Hodgins to the Court of Appeal, which gave judgment on the 2nd of March, 1901, holding that Gosfield North was a necessary party to the action and referring it back to the Referee to add Gosfield North and to proceed with the reference. Gosfield North was added according to the judgment and the cases came on again for hearing before Mr. Rankin, K.C., who had succeeded Mr. Hodgins as Drainage Referee, and Mr. Rankin, after hearing the further evidence submitted, gave judgment on the 30th of August, 1902, by which he increased the damages in some instances and in addition decided that the plaintiffs were entitled to an injunction to restrain both townships from continuing the damage to the plaintiffs' land. Both townships appealed from Mr. Rankin's report and their appeal was heard by the Court of Appeal on the 29th of April, 1903. Judgment was given by the Court of Appeal on the 5th of January, 1904, whereby the Court holds that both townships are jointly liable for such damages as the plaintiffs are entitled to, but that the plaintiffs are not entitled to the damages claimed by the actions and are only entitled to the damages sustained for the two years prior to the 10th of September, 1901, when Gosfield North became a party to the actions. The Court decides that the plaintiffs are not entitled to any injunction against the

townships to prevent the use of the drain for their waters and refers the action back again to the Referee to ascertain the proper amount of damages payable. The parties are ordered to pay their own costs of the appeals. The Court recommends that the parties make an adjustment without the further intervention of the Referee.

**OSBORNE VS. TOWN OF MIDLAND.**—W. Lajdlaw, K. C., for plaintiff, appealed from judgment of Meredith, C.J., dated 17th June, 1903. The action was for damages and for an injunction enjoining the defendants from continuing a certain drain in its present condition. Drains had been put down by the defendants on King and Victoria streets, in the town of Midland. The plaintiff was a merchant, and his premises were drained by the drains so put down, and he alleged that when the drain was put down on Victoria street the joining with the one on King street was done in an improper manner, and resulted in the plaintiff's premises being flooded, causing considerable damage to goods stored in his cellar. The defendants denied that they were under any obligation to keep the drain in question in repair, and that the damage was caused by the plaintiff's own defective drainage connection, and also that the damage was caused by an extraordinary and excessive rainfall, against which the defendants could not be expected and are not bound to provide. Meredith, C.J., dismissed the action with costs. Finlayson, for defendants, opposed appeal. Appeal dismissed.

William Curry & Sons, planing mill, etc., Windsor, N. S., are announced to have assigned.

**JOHN GALT, C.E. & M.E.**  
MEM. CAN. SOC. C.E. AND C.E.A., ETC.  
**CONSULTING ENGINEER and EXPERT**  
National Trust Building  
20 King Street East Toronto  
Specialties—Water Supply and Sewerage.

If Its  
**WATERWORKS  
PUMPING  
ENGINES**

**FIRE  
HYDRANTS  
OR  
VALVES**

for  
**Steam, Water, Gas  
and  
Radiation**

Get Catalog and Prices of  
**THE KERR ENGINE CO'Y**  
Limited  
Walkerville - - - Ontario

**JOSSON CEMENT** .. Manufactured at  
**NIEL ON RUPELL**

Is the Highest Grade Artificial Portland Cement and the Best for High Class Work. Has been used largely for Government and Municipal Works.

TO BE HAD FROM ALL CANADIAN DEALERS

**C. I. de Sola, Manager in Canada** .. 180 St. James Street, MONTREAL

**BLAST . . . SLAG . . . A MOLTEN  
FURNACE . . . ROCK . . .**

Cement Sidewalks, Road Foundation and Concrete Work

**STRONG AS STONE  
CHEAP AS GRAVEL**

**Doolittle & Wilcox, Hamilton, Ont.**

**Portland Cement..**

ALL GRADES.

Write or Telegraph to

**BELLHOUSE, DILLON & CO.**

201-208 Coristine Building, St. Nicholas Street, Montreal

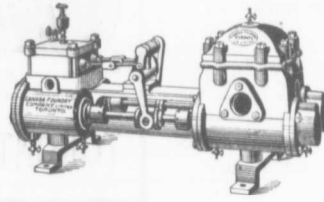
for prices—Large stock constantly  
on hand.



Largest Makers in the World.

# WATERWORKS SUPPLIES

OF EVERY DESCRIPTION



**Pumps for All Duties**  
**Boiler Feed, Fire Protection**  
**Hydraulic Elevators**  
**Pumps Actuated by Electricity, etc.**

**Valves, Hydrants, Valve Boxes,**  
**Cast Iron Water and Gas Pipe,**  
**Steam Boilers and Rivetted Steel Plate Work of Every Description.**

## CANADA FOUNDRY COMPANY, LIMITED

Head Office and Works: TORONTO, ONT.

District Offices: MONTREAL HALIFAX OTTAWA WINNIPEG VANCOUVER ROSSLAND CALGARY

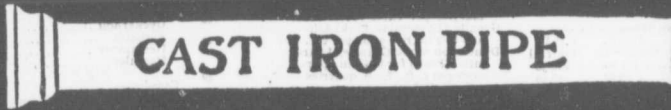
THOS. J. DRUMMOND, President

JAMES T. McCALL, Secretary-Treasurer

C. ED. GUDWILL, Vice-President

## Montreal Pipe Foundry Co., Limited

Special Castings  
Flange Pipe  
Branches  
Hydrants  
Valves



**CAST IRON PIPE**

Valve Boxes and general Water Works Supplies

Works at: { LACHNE, QUE.  
THREE RIVERS, QUE.  
LONDONDERRY, N. S.

Combined daily capacity:  
175 Tons Pipes and Castings.

HEAD OFFICE CANADA LIFE BUILDING, MONTREAL

JAMES THOMSON, President. JAMES A. THOMSON, Secretary. JOHN GARTSHORE, Treasurer. J. G. ALLAN, Vice-President.

## THE GARTSHORE-THOMSON PIPE & FOUNDRY CO. LIMITED.

Manufacturers of:::

Flexible and Flange Pipe,  
Special Castings and all kinds of  
Waterworks Supplies



**CAST IRON PIPE**

3 inches to 60 inches diameter.

For Water, Gas, Culvert and Sewer

~~~~~ HAMILTON, ONT ~~~~~

# M. BEATTY & SONS

WELLAND, ONT.

Dredges, Ditchers, Derricks and Steam Shovels  
of various styles and sizes to suit any work.

Submarine Rock Drilling Machinery, Hoisting Engines, Suspension Cableways, Horse-Power Hoisters, Gang Stone Saws, Centrifugal Pumps for Water, Sand and Gold Mining, and other Contractors' Plant.

Please mention the CONTRACT RECORD when corresponding with advertisers

## LARGEST GLAZED VITRIFIED SEWER PIPE and FITTINGS



HIGH-GRADE  
**FIRE BRICK & FIRE CLAY**  
WHOLESALE ONLY

Mimico, Hamilton, St. Johns, Que., and New Glasgow, N. S.  
Shipments will be made from nearest factory or freight equalized.  
Ask for Discounts and Prices. Address

**TORONTO POTTERY CO., Toronto, Ont.**  
Telephone North 1787

### Prices of Building Materials.

**PRESSED BRICK, Per M.**

| MILTON PRESSED BRICK AND SEWER PIPE CO. | F.O.B. Milton, Ont. | F.O.B. Montreal |
|-----------------------------------------|---------------------|-----------------|
| Red No. 1                               | 18 00               | 16 00           |
| " " "                                   | 18 00               | 14 00           |
| Buff No. 1                              | 20 00               | 18 50           |
| " " "                                   | 20 00               | 18 50           |
| Brown                                   | 25 50               | 25 50           |
| Roman Red                               | 30 50               | 30 50           |
| " Buff                                  | 33 50               | 33 50           |
| " Brown                                 | 40 50               | 40 50           |
| Hard Building                           | 12 00               | 12 00           |
| Sewers                                  | 12 00               | 12 00           |
| Backing                                 | 11 50               | 11 50           |

**DON VALLEY PRESSED BRICK WORKS.**

|                                                     |       |       |
|-----------------------------------------------------|-------|-------|
| Nos. 1, 2 and 3 Red Pressed Bricks                  | 18 00 | 16 00 |
| Nos. 1 and 2 Buff Pressed Bricks                    | 20 00 | 18 50 |
| No. 1 Brown Pressed Brick                           | 25 50 | 25 50 |
| Companion Red, Buff and Brown Pressed Bricks        | 30 50 | 30 50 |
| Ornamental Bricks of all kinds for Mantel purposes  | 40 50 | 40 50 |
| Porous Terra Cotta Fireproofing of all Descriptions | 12 00 | 12 00 |
| Vitrified Street-Paving Bricks                      | 12 00 | 12 00 |
| Am Vitrified Foundation Bricks                      | 12 00 | 12 00 |
| Common Stock Red and Grey Bricks                    | 12 00 | 12 00 |
| we 1 Bricks                                         | 12 00 | 12 00 |
| one for Macadamized Roadways                        | 12 00 | 12 00 |

Please write to both offices for catalogue and prices.

# W. & F. P. CURRIE & CO.

345 St. James St., Montreal

SEWER PIPES,  
CULVERT PIPES, ETC.  
VENT LININGS,  
FLUE COVERS,  
FIRE BRICKS,  
FIRE CLAY,  
WHITING.



Importers of  
**PORTLAND CEMENTS,**  
HIGH GRADE ENGLISH  
" " GERMAN  
" " BELGIAN  
PLASTER OF PARIS  
BORAX,  
CHINA CLAY.

**ONTARIO PRESSED BRICK AND TERRA COTTA WORKS**

| F.O.B. Milton, Ont.                                                      | F.O.B. Montreal |
|--------------------------------------------------------------------------|-----------------|
| Red No. 1                                                                | 18 00           |
| " " "                                                                    | 18 00           |
| Buff No. 1                                                               | 20 00           |
| " " "                                                                    | 20 00           |
| Brown                                                                    | 25 50           |
| Roman Red                                                                | 30 50           |
| " Buff                                                                   | 33 50           |
| " Brown                                                                  | 40 50           |
| Hard Building                                                            | 12 00           |
| Sewers                                                                   | 12 00           |
| Backing                                                                  | 11 50           |
| Moulded and Ornamental from \$2.00 to \$5.00 per 100                     |                 |
| Terra Cotta String Courses and Friezes, from soc. to \$2.00 per ft. run. |                 |
| Roofing Tiles, \$20.00 per 1,000, \$23.00 Montreal.                      |                 |

**BEAMSVILLE BRICK AND TERRA COTTA CO.**

| F.O.B. Beamsville, Montreal.                          | F.O.B. Montreal |
|-------------------------------------------------------|-----------------|
| Red Peerless Facing                                   | \$20 00         |
| " No. 1                                               | 18 50           |
| " No. 2                                               | 16 50           |
| " No. 3                                               | 14 00           |
| Brown Peerless Facing                                 | 25 50           |
| " No. 1                                               | 23 50           |
| " No. 2                                               | 21 50           |
| Moulded and Ornamental Brick from \$3 to \$10 per C50 |                 |
| Roman Red (Size 12 x 4 x 1 1/2 in.)                   | 28 00           |
| " Buff                                                | 33 50           |
| " Brown                                               | 39 50           |
| Vitrified Paving Brick No. 1                          | 23 50           |
| " " " No. 2                                           | 20 50           |
| Sewer                                                 | 12 00           |
| Roofing Tile                                          | 22 00           |

**TORONTO POTTERY CO.**

| F. O. B. Toronto | Car lots | Less     |
|------------------|----------|----------|
| Boyd             | 21 00 M. | 20 00 M. |
| W. W. Co.        | 24 50 M. | 23 50 M. |
| Savage Crown     | 28 50 M. | 33 00 M. |

**STONES.**

| Toronto                                                          | Montreal    |
|------------------------------------------------------------------|-------------|
| Common Rubble, per ton, delivered at building                    | 13 50 11 00 |
| Large flat Rubble, per ton, delivered                            | 14 00 18 00 |
| Foundation Blocks, per c. ft.                                    | 4 1 50      |
| Granite (Stanstead) Ashlar, 6 in. to 12 in., rise 4 in., per ft. | 15          |
| Amherst Red Sandstone                                            |             |
| Amherst, N. S., per cub. ft.                                     | 85 70       |
| Sackville, N. B. brown or red st. e. f. o. b. Quarries           | 45 45       |
| Massilon                                                         | 30 42       |

| Toronto, Montreal.                                                                              | PORTLAND CEMENT           | Toronto, Montreal   |
|-------------------------------------------------------------------------------------------------|---------------------------|---------------------|
| Stanstead granite paving blocks, 12 in. to 12 in. x 6 in. x 4 1/2 in. per M.                    | English—                  | 35 340 2 00 2 10    |
| Granite curbing stone, 6x 6 in. per lineal foot                                                 | Brock's Shoobridge Anchor | 2 35 2 50 2 40 2 50 |
| Bucatoche Olive Freestone                                                                       | Excelsior Brand           | 55                  |
| Olive Sandstone (Indian-town, N. B.)                                                            | Belgian—                  |                     |
| Brown Sandstone (Sackville, N. B.)                                                              | " " " " " " " "           |                     |
| Moat red sandstone, per cu. ft.                                                                 | " " " " " " " "           |                     |
| Black Pasture buff stone per cu. ft.                                                            | " " " " " " " "           |                     |
| Nova Scotia blue grey per cu. ft.                                                               | " " " " " " " "           |                     |
| Consera, 6 to 8 in. bed, f. o. b. St. Mary's, per cord                                          | " " " " " " " "           |                     |
| Roofing, 6 to 10 in. wide, per cubic foot                                                       | " " " " " " " "           |                     |
| Dimension Stone, f. o. b. St. Mary's, per cubic foot                                            | " " " " " " " "           |                     |
| Granite (Laurentian Pink) Ashlar, 6 to 2 in., rise 9 in., per c. ft.                            | " " " " " " " "           |                     |
| Dimension Stone Granite, (Laurentian Pink) for building purposes, per c. ft., f. o. b. quarries | " " " " " " " "           |                     |
| Do., for polishing purposes, up to 2 tons weight, per cubic foot                                | " " " " " " " "           |                     |
| Dimension stock granite for building purposes, per cu. ft.                                      | " " " " " " " "           |                     |
| Do., for polishing purposes, up to 2 tons weight, per cubic ft.                                 | " " " " " " " "           |                     |
| Paving sets, per thousand block                                                                 | " " " " " " " "           |                     |
| <b>CREDIT VALLEY STONE.</b>                                                                     |                           |                     |
| Rubble, per ton                                                                                 |                           |                     |
| Brown Coursing, up to 10 per sup. yard                                                          |                           |                     |
| Brown dimension, per cub. yard                                                                  |                           |                     |
| Grey coursing, per sup. yard                                                                    |                           |                     |
| Grey dimension, per cub. ft.                                                                    |                           |                     |
| <b>ROMAN STONE. F. O. B. Factory.</b>                                                           |                           |                     |
| Sills per lineal foot                                                                           |                           |                     |
| Hollow Block, 12-inch wall, per superficial foot                                                |                           |                     |
| Window Heads and Ashlar, per superficial foot, arch bed                                         |                           |                     |
| String Courses, Moulded and Ornamental, per lineal foot, soc. to                                |                           |                     |
| Chimney Caps, \$2 to                                                                            |                           |                     |
| <b>SLATE. Toronto, Montreal.</b>                                                                |                           |                     |
| Roofing (W squares)                                                                             |                           |                     |
| red....                                                                                         | 20 00 20 00               |                     |
| purple....                                                                                      | 9 00 10 00                |                     |
| unfading green                                                                                  | 10 00 11 00               |                     |
| oak....                                                                                         | 9 00 9 00                 |                     |
| Terra Cotta T Lr, per sq ..                                                                     | 23 00 25 00               |                     |
| Ornamental Black Slate Roofing                                                                  | 77 50                     |                     |

(CORRECTED UP TO AUGUST 16TH.)