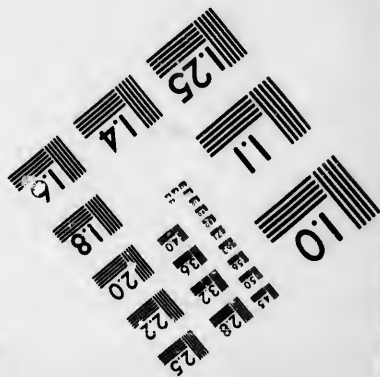
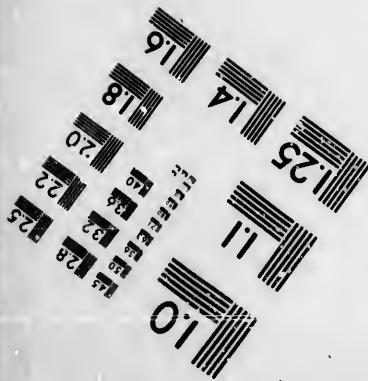
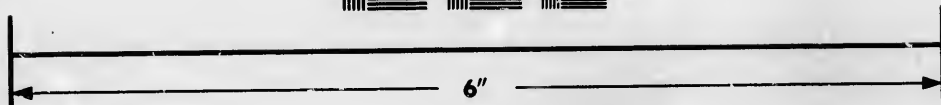
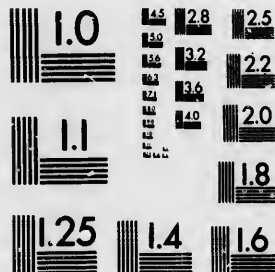


**IMAGE EVALUATION
TEST TARGET (MT-3)**



**Photographic
Sciences
Corporation**

23 WEST MAIN STREET
WEBSTER, N.Y. 14580
(716) 872-4503

**CIHM/ICMH
Microfiche
Series.**

**CIHM/ICMH
Collection de
microfiches.**



Canadian Institute for Historical Microreproductions / Institut canadien de microreproductions historiques

© 1986

Technical and Bibliographic Notes/Notes techniques et bibliographiques

The Institute has attempted to obtain the best original copy available for filming. Features of this copy which may be bibliographically unique, which may alter any of the images in the reproduction, or which may significantly change the usual method of filming, are checked below.

L'Institut a microfilmé le meilleur exemplaire qu'il lui a été possible de se procurer. Les détails de cet exemplaire qui sont peut-être uniques du point de vue bibliographique, qui peuvent modifier une image reproduite, ou qui peuvent exiger une modification dans la méthode normale de filmage sont indiqués ci-dessous.

- | | |
|--|--|
| <input type="checkbox"/> Coloured covers/
Couverture de couleur | <input type="checkbox"/> Coloured pages/
Pages de couleur |
| <input type="checkbox"/> Covers damaged/
Couverture endommagée | <input type="checkbox"/> Pages damaged/
Pages endommagées |
| <input type="checkbox"/> Covers restored and/or laminated/
Couverture restaurée et/ou pelliculée | <input type="checkbox"/> Pages restored and/or laminated/
Pages restaurées et/ou pelliculées |
| <input type="checkbox"/> Cover title missing/
Le titre de couverture manque | <input checked="" type="checkbox"/> Pages discoloured, stained or foxed/
Pages décolorées, tachetées ou piquées |
| <input type="checkbox"/> Coloured maps/
Cartes géographiques en couleur | <input type="checkbox"/> Pages detached/
Pages détachées |
| <input type="checkbox"/> Coloured ink (i.e. other than blue or black)/
Encre de couleur (i.e. autre que bleue ou noire) | <input checked="" type="checkbox"/> Showthrough/
Transparence |
| <input type="checkbox"/> Coloured plates end/or illustrations/
Planches et/ou illustrations en couleur | <input type="checkbox"/> Quality of print varies/
Qualité inégale de l'impression |
| <input type="checkbox"/> Bound with other material/
Relié avec d'autres documents | <input type="checkbox"/> Includes supplementary material/
Comprend du matériel supplémentaire |
| <input type="checkbox"/> Tight binding may cause shadows or distortion
along interior margin/
La reliure serrée peut causer de l'ombre ou de la
distorsion le long de la marge intérieure | <input type="checkbox"/> Only edition available/
Seule édition disponible |
| <input type="checkbox"/> Blank leaves added during restoration may
appear within the text. Whenever possible, these
have been omitted from filming/
Il se peut que certaines pages blanches ajoutées
lors d'une restauration apparaissent dans le texte,
mais, lorsque cela était possible, ces pages n'ont
pas été filmées. | <input type="checkbox"/> Pages wholly or partially obscured by errata
slips, tissues, etc., have been refilmed to
ensure the best possible image/
Les pages totalement ou partiellement
obscurcies par un feuillet d'errata, une pelure,
etc., ont été filmées à nouveau de façon à
obtenir la meilleure image possible. |
| <input checked="" type="checkbox"/> Additional comments:/ [Printed ephemera] [4] p.
Commentaires supplémentaires: | |

This item is filmed at the reduction ratio checked below/
Ce document est filmé au taux de réduction indiqué ci-dessous.

10X	12X	14X	16X	18X	20X	22X	24X	26X	28X	30X	32X
							↓				

The copy filmed here has been reproduced thanks to the generosity of:

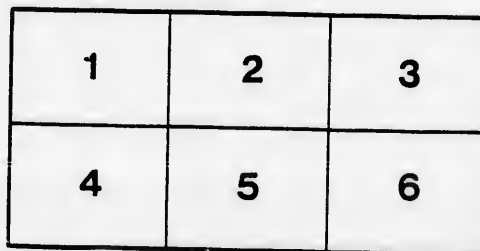
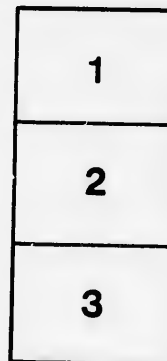
D. B. Weldon Library
University of Western Ontario
(Regional History Room)

The images appearing here are the best quality possible considering the condition and legibility of the original copy and in keeping with the filming contract specifications.

Original copies in printed paper covers are filmed beginning with the front cover and ending on the last page with a printed or illustrated impression, or the back cover when appropriate. All other original copies are filmed beginning on the first page with a printed or illustrated impression, and ending on the last page with a printed or illustrated impression.

The last recorded frame on each microfiche shell contain the symbol \rightarrow (meaning "CONTINUED"), or the symbol ∇ (meaning "END"), whichever applies.

Maps, plates, charts, etc., may be filmed at different reduction ratios. Those too large to be entirely included in one exposure are filmed beginning in the upper left hand corner, left to right and top to bottom, as many frames as required. The following diagrams illustrate the method:



L'exemplaire filmé fut reproduit grâce à la générosité de:

D. B. Weldon Library
University of Western Ontario
(Regional History Room)

Les images suivantes ont été reproduites avec le plus grand soin, compte tenu de la condition et de la netteté de l'exemplaire filmé, et en conformité avec les conditions du contrat de filmage.

Les exemplaires originaux dont la couverture en papier est imprimée sont filmés en commençant par le premier plat et en terminant soit par la dernière page qui comporte une empreinte d'impression ou d'illustration, soit par le second plat, selon le cas. Tous les autres exemplaires originaux sont filmés en commençant par la première page qui comporte une empreinte d'impression ou d'illustration et en terminant par la dernière page qui comporte une telle empreinte.

Un des symboles suivants apparaîtra sur la dernière image de chaque microfiche, selon le cas: le symbole \rightarrow signifie "A SUIVRE", le symbole ∇ signifie "FIN".

Les cartes, planches, tableaux, etc., peuvent être filmés à des taux de réduction différents. Lorsque le document est trop grand pour être reproduit en un seul cliché, il est filmé à partir de l'angle supérieur gauche, de gauche à droite, et de haut en bas, en prenant le nombre d'images nécessaire. Les diagrammes suivants illustrent la méthode.

ire
détails
es du
modifier
er une
filmage

es

rrata
to

pelure,
n à

32X

GENERAL STATEMENT.

31ST MAY, 1898.

LIABILITIES.

Notes of the Bank in circulation	\$ 3,030,428 00
Deposits not bearing interest	\$ 3,490,953 75
Deposits bearing interest, including interest accrued to date	10,798,152 55
	\$23,289,106 30
Balances due to other Banks in Canada	16,125 89
Balances due to Agents in Great Britain	665,669 91
Dividends unpaid	1,837 92
Dividend No. 62, payable 1st June	210,000 00
Capital paid up	\$6,000,000 00
Rest	1,000,000 00
Balance of Profit and Loss Account carried forward	42,935 57
	7,042,935 57
	\$34,256,103 59

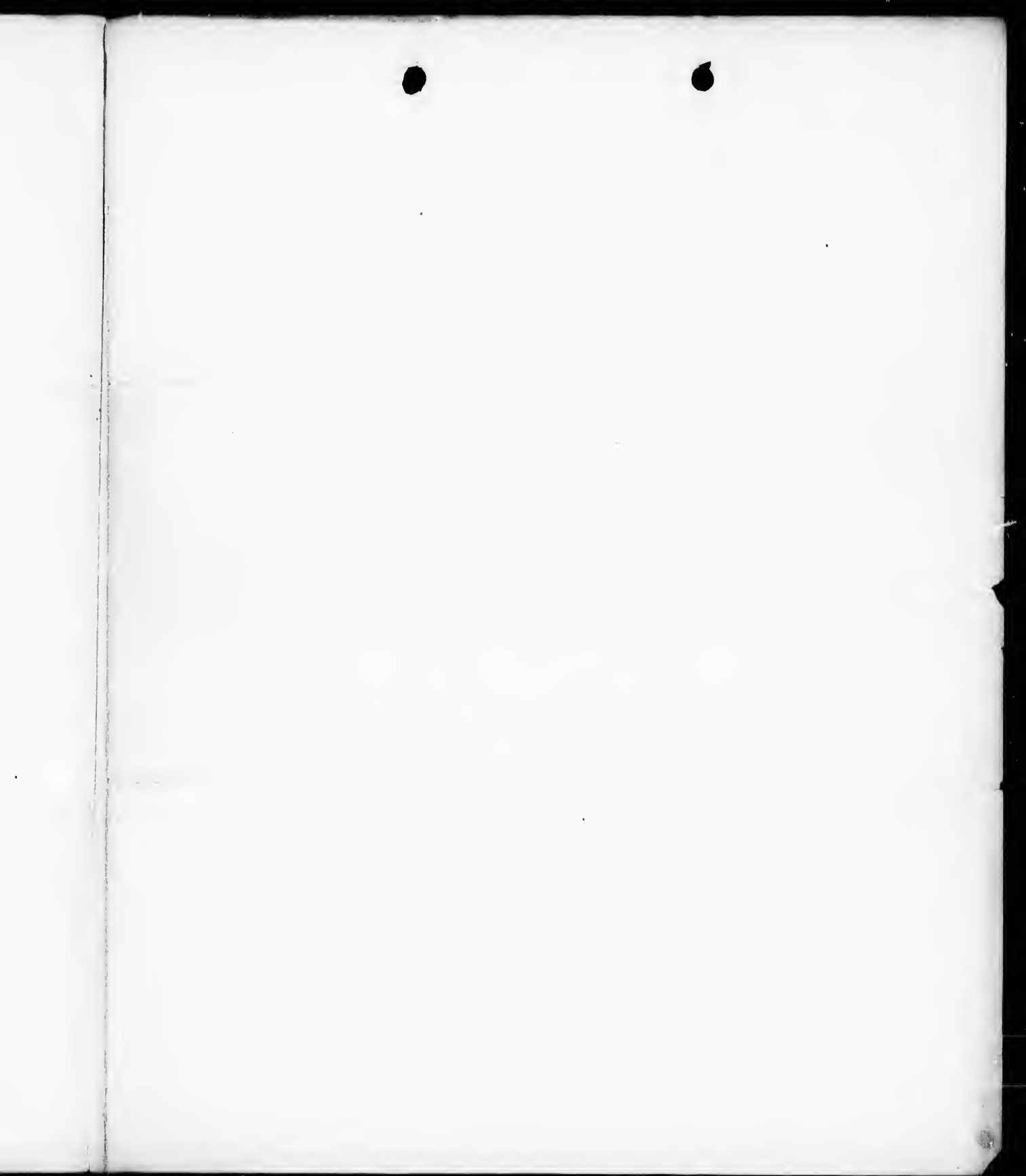
ASSETS.

Specie	\$419,250 38
Dominion Notes	889,776 75
	\$ 1,309,036 13
Deposit with Dominion Government for security of Note circulation	165,001 77
Notes of and Cheques on other Banks	894,186 13
Balances due by other Banks in Canada	71,756 10
Balances due by Agents of the Bank in the United States	4,443,069 53
Canadian Government Securities, Municipal and other Bonds	7,444,102 56
Call Loans on Stocks and Bonds	2,651,532 73
	\$16,978,684 95
Time Loans on Stocks and Bonds	910,476 86
Other current Loans and Discounts	15,131,578 20
Overdue Debts (loss fully provided for)	161,002 91
Real Estate (other than Bank premises)	116,439 51
Mortgages	107,027 02
Bank Premises and Furniture	754,401 53
Other Assets	96,492 61
	\$34,256,103 59

B. E. WALKER,

General Manager.





THE CANADIAN BANK OF COMMERCE.

REPORT OF THE BOARD OF DIRECTORS.

To be presented to the Shareholders at the Annual Meeting on Tuesday, 21st June, 1898.

The Directors beg to present to the Shareholders the thirty-first Annual Report, covering the year ending 31st May, 1898, together with the usual Statement of Assets and Liabilities :

The Balance at credit of Profit and Loss Account, brought forward from last year, is.....	\$ 20,479 27
The Net Profits for the year ending 31st May, after providing for all bad and doubtful debts, is.....	477,456 30
	<u>\$497,935 57</u>

Which has been appropriated as follows : -

Dividends No. 61 and 62 at Seven per cent. per annum.....	\$420,000 00
Transferred to Pension Fund	10,000 00
Written off Bank Premises and Furniture.....	25,000 00
Balance carried forward	42,935 57
	<u>\$497,935 57</u>

The usual careful revaluation of the entire assets of the Bank has been made, and all bad and doubtful debts have been amply provided for.

In presenting the statement at the close of the last fiscal year the Directors drew attention to the large resources of the Bank which they were obliged to invest in loans and securities yielding a low rate of interest. This condition continued throughout the year which has just closed until the marked revival in all channels of business two or three months ago.

The Bank has been appointed the sole agent of the Dominion Government for the collection of the royalty to be imposed on gold mined in the Yukon District. It has also been appointed the banker for all the ordinary business of the Government in that District. In consequence of this and of influential business connections in the Alaskan and Yukon countries, a branch of the Bank has been established at Dawson City. A branch has also been opened at Dresden, Ont., and the sub-branch at Chaboillez Square has been closed.

The Directors have again pleasure in recording their appreciation of the efficiency and zeal with which their respective duties have been performed by the officers of the Bank.

GEO. A. COX,

President.

TORONTO, June 7th, 1898.

