

Technical and Bibliographic Notes / Notes techniques et bibliographiques

The Institute has attempted to obtain the best original copy available for filming. Features of this copy which may be bibliographically unique, which may alter any of the images in the reproduction, or which may significantly change the usual method of filming, are checked below.

L'Institut a microfilmé le meilleur exemplaire qu'il lui a été possible de se procurer. Les détails de cet exemplaire qui sont peut-être uniques du point de vue bibliographique, qui peuvent modifier une image reproduite, ou qui peuvent exiger une modification dans la méthode normale de filmage sont indiqués ci-dessous.

Coloured covers/
Couverture de couleur

Coloured pages/
Pages de couleur

Covers damaged/
Couverture endommagée

Pages damaged/
Pages endommagées

Covers restored and/or laminated/
Couverture restaurée et/ou pelliculée

Pages restored and/or laminated/
Pages restaurées et/ou pelliculées

Cover title missing/
Le titre de couverture manque

Pages discoloured, stained or foxed/
Pages décolorées, tachetées ou piquées

Coloured maps/
Cartes géographiques en couleur

Pages detached/
Pages détachées

Coloured ink (i.e. other than blue or black)/
Encre de couleur (i.e. autre que bleue ou noire)

Showthrough/
Transparence

Coloured plates and/or illustrations/
Planches et/ou illustrations en couleur

Quality of print varies/
Qualité inégale de l'impression

Bound with other material/
Relié avec d'autres documents

Continuous pagination/
Pagination continue

Tight binding may cause shadows or distortion along interior margin/
La reliure serrée peut causer de l'ombre ou de la distorsion le long de la marge intérieure

Includes index(es)/
Comprend un (des) index

Title on header taken from:
Le titre de l'en-tête provient:

Blank leaves added during restoration may appear within the text. Whenever possible, these have been omitted from filming/
Il se peut que certaines pages blanches ajoutées lors d'une restauration apparaissent dans le texte, mais, lorsque cela était possible, ces pages n'ont pas été filmées.

Title page of issue/
Page de titre de la livraison

Caption of issue/
Titre de départ de la livraison

Masthead/
Général (périodiques) de la livraison

Additional comments:
Commentaires supplémentaires:

This item is filmed at the reduction ratio checked below/
Ce document est filmé au taux de réduction indiqué ci-dessous.

10X	12X	14X	16X	18X	20X	22X	24X	26X	28X	30X	32X
<input type="checkbox"/>	<input type="checkbox"/>	<input type="checkbox"/>	<input type="checkbox"/>	<input type="checkbox"/>	<input type="checkbox"/>	<input type="checkbox"/>	<input type="checkbox"/>	<input type="checkbox"/>	<input type="checkbox"/>	<input checked="" type="checkbox"/>	<input type="checkbox"/>

CANADA LUMBERMAN

WEEKLY EDITION

The Lumberman Monthly Edition, 24 pages } \$1.00 PER YEAR { The Lumberman Weekly Edition, every Wednesday

THIS PAPER REACHES REGULARLY THE PRINCIPAL LUMBER MANUFACTURERS AND DEALERS THROUGHOUT CANADA, AND WHOLESALE BUYERS IN GREAT BRITAIN, THE UNITED STATES, AND OTHER FOREIGN MARKETS.

Vol. VIII.

TORONTO, CANADA, SEPTEMBER 17, 1902

33

CANADA LUMBERMAN

PUBLISHED BY

The G. H. Mortimer Publishing Co.'s
of Toronto, Limited

Confederation Life Building - TORONTO.

Branch Offices.

IMPERIAL BUILDING MONTREAL,
22 GREAT ST. HILARY'S, LONDON, E. C.

Weekly Lumberman, published every Wednesday. Contains reliable and up-to-date market conditions and tendencies in the principal manufacturing districts and trading domestic and foreign wholesale markets. A weekly medium of information and communication between Canadian timber and lumber manufacturers and exporters and the purchasers of timber products at home and abroad.

Lumberman, Monthly A 32-page journal, discussing fully and impartially subjects pertinent to the lumber and wood-working industries. Contains interviews with prominent members of the trade, and character sketches and portraits of leading lumbermen. Its special articles on technical and mechanical subjects are especially valuable to saw mill and planing mill men and manufacturers of lumber products.

LUMBERMAN'S

VEST-POCKET

INSPECTION BOOK

Containing Rules for the Inspection and Measuring of Pine and Hardwood Lumber in the leading markets of Canada and the United States. Embracing also many useful tables and calculations of everyday service to lumbermen.

Prepared by the Editor of the
"Canada Lumberman."

Toronto, Canada

C. H. MORTIMER, Publisher

1895

THE above is a fac simile of the title page of the latest and most complete Lumber and Inspection Book published.

We shall be pleased to send you a copy on receipt of six 2 cent Canadian postage stamps

THE CANADA LUMBERMAN,
Toronto, Canada.

WANTED AND FOR SALE

Advertisements will be inserted in this department at the rate of 15 cents per line each insertion. When four or more consecutive insertions are ordered a discount of 25 per cent. will be allowed. This notice shows the width of the line and is set in Nonpareil type; 12 lines make one inch. Advertisements must be received not later than 4 o'clock p. m. on Tuesday to insure insertion in the current week's issue.

WANTED—MACHINERY SUITABLE FOR A good circular mill that would have a capacity of 30,000 feet per day. Apply at once to Box 20, CANADA LUMBERMAN.

In the High Court of Justice.

In the Matter of the

McLAREN-ROSS LUMBER CO., Limited

In the Matter of the Winding up Act (Domestic) and of the Acts amending the same.

Pursuant to a winding up order of the Court dated 6th September, 1902, made in this matter, there will be sold by and with the approbation of William Louis Scott, Esquire, the Master of this Court at Ottawa, at his Chambers, in the Court House, at the City of Ottawa, at the hour of two o'clock p. m. on the 17th DAY OF NOVEMBER, 1902, the following real and personal estate, the property of the said Company, all situate in the Province of British Columbia, Canada.

PARCEL NO. 1.—Lot No. 55, comprising 2,600 acres more or less in the Seaward District, Vancouver Island. Title renewable ten-yearhold.

PARCEL NO. 2.—Lot No. 439 G 2, comprising 9,280 acres more or less, situate in the District of New Westminster.

Lot No. 50, comprising 6,720 acres more or less, in the Chilliwack District.

Lot No. 55, comprising 15,000 acres more or less in the Chilliwack District.

Lot No. 81, comprising 1,042 acres more or less in the Chilliwack District.

The above four lots are held under renewable annual licenses.

PARCEL NO. 3.—A tract of land comprising about 400 acres more or less, held in fee simple, including a mill site and farm lands en bloc situated on the north bank of the Fraser River about three miles east of New Westminster, B.C.

About 200 acres of this land is cleared, graded and drained and has been under cultivation a number of years. The mill located upon this site is a frame mill about 455 ft. by 72 ft. with T cross tall end of main building, about 176 ft. by 60 ft. The whole structure from foundation up is built in a most substantial manner, well timbered and braced with knees, metal roof, contains three steam engines of three hundred horse power each, and is fitted throughout with special machinery for working up B.C. timber of all dimensions as well as for working out the refuse into laths, pickets, etc., etc., also planers and matchers, with a large assortment of tools, plant and equipment, also one large refuse burner, one large stone boiler house, metal roof, containing ten large tubular boilers, steam pumps with all necessary and proper attachments, good frame office, boarding house, cottages, horse stables, blacksmith shop and machine shop, with good efficient and complete plant of tools and machinery in each shop.

Each parcel will be offered for sale separately, without reserve. All persons other than the liquidator are to be at liberty to bid.

The property will be sold subject to all rents, taxes, dues and rates accruing due subsequent to the 31st December, 1902.

The purchaser shall, at the time of sale, pay a deposit of 10 per cent of their purchase money and shall pay the balance within one month of the day of sale. The purchasers shall have the conveyances prepared at their own expense and tender the same for execution. All expenses of and incidental to the investigation of titles, including the abstracts thereof, shall be borne by the purchasers. The vendor will be bound to produce only such title deeds as are in his possession. In all other respects the terms and conditions of sale shall be the standing conditions of this Court.

Further particulars may be had on application to E. S. Leatham, Esq., the Liquidator, or to Messrs. Christie & Greene, his solicitors, No. 110 Wellington Street, Ottawa.

Dated 11th day of September, 1902.

(Signed) W. J. SCOTT,
Master, at Ottawa.

FOR SALE FOR NEXT SPRING AND SUMMER delivery. Twenty Thousand and up Hemlock Railway ties. For particulars apply to W. THOMSON, Thurso, Que.

WANTED—TEN THOUSAND CORDS Hard and Soft Wood, also same quantity of Slabs. SIMCOE WOOD AND LUMBER CO., 52 Yonge Street Arcade, Toronto.

FOR SALE—First-Class Portable Saw and Shingle Mill; good locality; plenty of timber. For further particulars apply to GEO. A. PATRICK, Emo P. O., Rainy River District.

HAVE YOU ANY STOCK WHICH YOU wish to sell? If so, make the fact known to probable buyers by placing an advertisement in the Wanted and For Sale Department. Address, CANADA LUMBERMAN, Toronto.

WANT TO CORRESPOND WITH PARTIES that wish to open up a trade in all kinds of Hardwood Blocks for the English market. Specifications, prices, etc., obtained from E. D. G. FIDGON, St. John, N. B.

WE ARE IN THE MARKET AND WILL pay highest cash price for immediate shipment of Birch, Black Ash, Basswood, Red Oak and Soft Elm, any thickness, will inspect at mill. LONDON LUMBER COMPANY, London, Ont.

ROOM CHAINS FOR SALE.

A LARGE QUALITY OF 9/16 AND 11/16 Wire, B. H. grade, Cable Chain at second-hand. Lengths 10 to 16 feet. In quantities as desired. Write for prices. DETROIT LUMBER CO., Detroit, Mich.

DRY PINE.

WE HAVE ABOUT 1,000,000 FEET DRY PINE in 1, 2 and 3 inch common and better, prefer selling in bulk. Will quote freight rate to Buffalo, Chicago or Toronto on application. Correspondence solicited. N. B.—Would like to correspond with consumers of hardwoods. ST. JOHN ISLAND LUMBER CO., Sault Ste. Marie, Ont.

SPECIAL TO LUMBERMEN.

WITH A THOROUGHLY EQUIPPED PLANING MILL at Orillia, we solicit orders for resawing and planing of lumber, in any quantity; can match 26 inches wide; all work guaranteed first-class; prices on application. Address, NATIONAL BOX CO., Orillia, Ont.

Hardwood Staves For Sale

THE UNDERSIGNED IS IN A POSITION to manufacture a large quantity of hardwood staves, and would be pleased to enter into correspondence with firms desiring to purchase such stock either in Canada or abroad. Address L. M. MAJORS, Bedford, Nova Scotia, Canada.

FOR SALE.

THE ENTIRE CUT OF 100 OF SEVERAL mills on the Ottawa Valley of all number one white pine mill culls, strips and slings, 1" to 3" thick, and also other grades. Shipments by water or rail. Write for particulars and quotations to A. P. BURN AUSTIN, Wholesale Lumber & Timber, Room 507 Merchants Bank Bldg., Montreal. Also spruce lumber of all grades.

SAWMILL MACHINERY FOR SALE

CAPACITY OF MILL 40 M. PER 10 HRS. Will fit up mill with band or circular saw, long timber or lumber mill, will cut from 3 to 6 ft. long, with large edger, slash table and lumber trimmer and jump-up saws, endless log chain and bull-wheel and drag-saw for sawing logs in water, also lath machines and trimmers and live rollers, turn tables, lumber cars and some track iron, with large powerful boiler and engine. Will erect mill for anyone wishing to buy or would go partner with person who has a large pine or hardwood limit and convenient place for shipping. For further particulars apply to NAVIER BARCHILLER, Sarula, Ont., Box 115.

3/16 INCH BASSWOOD AND ELM

WE HAVE FOR SALE ABOUT 200,000 FEET 3/16 inch Rotary Cut Basswood, 35 to 42 inches long and 6 to 16 inches wide, a large percentage of which is clear also about 300,000 feet 1/16 Elm mostly 60 inches long, suitable for crating. Would sell this stock in bulk or would cut it to dimensions or strips ready for use. T. H. RINK & KITCHENER CO., Limited, Lindsay, Ont.

CURRENT TRADE CONDITIONS.

ONTARIO.

A Western Ontario manufacturer, referring to the lumber market, writes: "Conditions were never brighter in the lumber trade, and the consumption of lumber in Canada and the United States is enormous. This is the almost unanimous opinion of lumbermen, whether manufacturer or dealer. In some quarters there is an inclination to endeavor to prevent prices from going higher, on the ground that a further advance would be likely to check the consumption. That the conditions warrant higher prices, however, can scarcely be disputed. There will not be sufficient white pine lumber to meet the requirements of the market, nor is the log production of the coming winter likely to relieve the situation entirely, as the condition of the labor market renders it almost impossible to secure more than an average crop of logs. Present indications point to a heavy demand and advancing prices during the balance of this year. In the Ottawa Valley good wide strips are bringing \$39 wholesale and are likely to go to \$40 within two weeks. Cutting-up plank also is likely to advance. Norway has come into greater favor and sells readily at \$13 at the mill. A few mills have a moderate stock of mill culls and the lower grades which have not been contracted for, but the entire production of good lumber may be said to have passed out of first hands.

Hardwoods are gaining in strength. Soft elm and maple stocks are more plentiful than other kinds, but red oak, black ash, birch and basswood are scarce and in good demand, with prospects of higher prices in the near future.

QUEBEC AND NEW BRUNSWICK.

Spruce lumber prices have hardened during the past week. There is a heavy demand for spruce boards and South American stock, as well as for British deals. For spruce boards, 6 inches and up wide, \$13 at the mill is being paid, while for deals of fair specification contracts have been placed at an equal to \$38 delivered at British ports, with higher prices for a large percentage of 9 x 3.

Although the cut of spruce lumber this year has been, if anything, above the average, stocks at the present time are very light, and on the year's contracts are filled it is predicted that the stocks carried over will be the smallest in twenty years. Manufacturers are finding no difficulty in obtaining \$3.60 for extra cedar shingles on Boston rate of freight.

There have been no recent sales of square or waney timber, and prices remain unchanged, but the tendency is towards firmness.

UNITED STATES.

Farmers have commenced to buy lumber liberally, and as during the summer months the demand was chiefly from the cities; increased activity has been caused by the buying throughout the agricultural districts. Most manufacturers have sold the greater portion of their cut and will go into the winter with very light stocks. The retail demand is expanding and indicates that a large consumption of lumber is expected during the fall and winter months. It is predicted that a marked shortage in several lines of white pine will be experienced. The present scarcity pertains especially to piece stuff. The shortage in dimension has already compelled some manufacturers to buy from others to fill orders. This condition is certain to result in higher prices for dimension. The strength of hemlock lumber is little less than remarkable, but is probably due to an appreciation of the scarcity of white pine. In New York last week an advance of 50 cents in the price of hemlock was put into effect, while Tonawanda dealers anticipate that an advance of from 50 cents to \$1 on some of the longer lengths will be made very shortly. Buffalo retailers held a meeting a few days ago and adopted a new schedule for hemlock on the basis of a \$3 advance over the wholesale price. Spruce is almost as firm as hemlock. Frames can hardly be bought in the Boston market at less than \$19, with 10 and 12-inch at \$21.

One of the most active hardwoods is basswood, for which there is a constant inquiry. The hardwood market as a whole is firm, with maple somewhat backward.

Red cedar shingles have advanced fifteen cents within the last ten days. This advance has been reflected in a stronger market for other kinds of shingles. White pine would be more in favor among dealers but for the scarcity and difficulty in obtaining a supply. Spruce lath was recently advanced 25 cents in New York.

GREAT BRITAIN.

The lumber trade of Great Britain have watched with some interest the result of the wheat harvest. The prediction that it would be an exceptionally poor one has been confirmed, as wet weather throughout the summer prevented the wheat from properly maturing. It is not believed that the poor harvest will materially affect lumber prices, as the stocks held are not large and imports continue to be light. The decrease in the different classes of lumber held in the Surrey Commercial Docks at London on August 31st of this year, as compared with same date last year, is as follows: Pine deals, 209,207 pieces; pine battens, 41,086 pieces; spruce deals, 300,086 pieces; spruce battens, 249,808 pieces; Baltic deals, 300,207 pieces; Baltic battens, 1,456,229 pieces; Baltic prepared board, 5,930,166 pieces; slating battens, 2,922,707 pieces. Considering the wet summer the extent to

which stocks have been kept down is quite satisfactory. Importers are discouraging further advances in shippers prices, but are placing orders at current quotations with some freedom. The key to the situation, so far as Canadian lumber is concerned, is the light stocks that all held on this side for shipment to Great Britain, the result of an increased demand at home and in the United States. The best grades of white pine deals are in splendid demand, prices ranging as high as \$75 per thousand feet. For best quality spruce deals \$38 per thousand feet is being paid by dealers for Quebec specifications, and \$26 for New Brunswick specifications. Red pine is showing more life at slightly advanced figures. First-class rock elm, maple and oak meet with ready sale. Prices of birch have been maintained, but the stock is rather heavy.

STOCKS AND PRICES.

The steamer Ancud sailed from Montreal last week for Antwerp, calling at Three Rivers to take on a quantity of deals.

The steamer Kalford is about to load a cargo of deals at Quebec for Cork. The barque C. B. Whidden sailed from Montreal last week for Rosaria, with a cargo of lumber.

There will be offered for sale by public auction by the New Brunswick Government on September 24th three square miles of timber limits on the Eel river, Lower Bay du Vin, and 4½ miles on Mc Donald's Brook, a branch of the Green river.

The Sutherland-Innes Company, of Chatham, Ont., state that the only change in the cooperage stock market is for the better. They believe that No. 1 staves will be a little scarce later on, and that the market for all classes of cooperage stock will advance considerably before the end of the year.

At the Crown Lands Office, Fredericton, N. B., the following timber berths were sold last week each, going to the applicants at the upset price of \$8 a mile. Little Salmon River, Victoria, 2 miles to J. A. Patterson; head of North Pole, branch S. W. Miramichi River, 9 miles, to Timothy Lynch; between Cow Mountain and Serpentine Lake, 6 miles, to Timothy Lynch; head of Gaspereau River, 6 miles, to Sayre & Holly Lumber Co.

Clairmonte, Man & Company, under date of August 30th, say of the Barbadoes market: "There have been no arrivals of lumber during the fortnight. Merchantable white pine is wanted, the last sale being at \$26 per M, while second quality is in over supply and brings \$7.50 per M. Last sale of spruce was at \$19.60. The "Lizzie Lindsay" arrived from Gaspé, Que., on 17th with 506,000 shingles. Sales were made at \$3.67½ to \$4.07 per M for Gaspé Long Cedar."

The Fredericton Boom Company had rafted upwards of one hundred million feet of logs of all kinds up to September 1 of this year. The quantity rafted up to same date last year was only 81,000,000 feet, and for the whole of 1901 the total was 91,399,515. The quantity rafted this season is made up as follows: 43,942 joints containing 566.40 tons of timber; 484,120 feet of hemlock; 6,498,870 feet of cedar; 3,343,310 feet of pine; 93,919,988 feet of spruce; total 104,245,288 superficial feet.

The cut of timber in the Lake St. John district of Quebec promises to be larger during the coming winter than ever before. Already several large contracts have been

given out. Elx's Tremblay, of St. Anne de Cincomin, has undertaken to cut 300,000 logs at Lake Kiskimik for the Belgo-Canadian Pulp Company, of Shawangou Falls. Israel Morin, of Chicoutimi, has taken a contract for the same company for 200,000 logs, and John Tremblay for 80,000 logs. A. Jonquiere will also take out a quantity of logs this winter.

THE GLASGOW MARKET

According to Edmiston & Mitchell's monthly timber circular, a fairly active business was done in Glasgow during the month of August, both on an "ex quay" and an "ex yard" basis, and values have been well maintained throughout. The consumption generally continues on a satisfactory scale, and, as the import to date has been very moderate, the market is strong all round. First quality white pine deals and sidings are in good demand, but for lower qualities there is not much enquiry. The housebuilding trade still continues in an active condition, and the prospects for the autumn and winter are fairly good.

WHITE PINE—The imports during the month consist of about 5000 loads, chiefly first-class waney. Some good lines of first-class waney deckwood have been placed "ex ship" at prices ranging from 3s 2d to 3s 5d per cubic foot, according to size. Square timber is difficult to move; prices, however, are firm at 2s 6d to 2s 9d per cubic foot for 800 to 1000 feet per page.

RED PINE—The import consists of about 500 loads, and coming on a light stock it will meet with a ready sale, as there are some good enquiries at present in the market. Prices are firm at from 1s 9d to 2s per cubic foot, according to size.

OAK—There has been an import of about 2200 loads, chiefly on contract. There is a fair demand and prices are firm at 3s to 3s 6d per cubic foot, according to specification.

ELM—The import during the month has been about 1800 loads. A number of sales are reported at firm prices, and prospects for first-class rock elm are good, though inferior timber is difficult to sell.

BIRCH—Quebec—The imports for August amount to about 400 logs and 130 loads planks, some of which were sold "ex quay" at prices which could not be satisfactory to shippers, but the bulk of the import found its way into

Orillia Planing Mills

and Sash and Door Factory

Near C. T. R. Station.

PLANING, MATCHING AND RE-SAWING

Done in any quantity. We guarantee satisfaction. Write for prices. Address,

S. P. CROFT, Box 428, Orillia.

Bulmer McLennan & Co.

EVERYTHING IN

LUMBER AND TIMBER

Rough or Dress & Wholesale and Retail

Office and Yard:

571 Dorchester St., Montreal, P. Q.
Telephone Main 368 Correspondence Solicited

FINANCIAL.

TELEPHONE 992 MAIN.

Codes used, A-B-C. Fourth Edition; Moring & Neale's Western Union.

New York
Chicago
London
Paris

J. H. JEWELL & CO. Bankers and Brokers

5 King Street West, Toronto, Canada.

store. The stock is still heavy and is moving away very slowly. Lower Port—There have been no imports during the month, but there is still a considerable stock on hand which is in all probability sufficient to meet the market's requirements for some time to come.

ASH—About 600 logs have come forward during the month, part of which went away from the ships' side, the balance being stored. There is very little enquiry for ash, and there is an ample stock on hand.

DEALS, &c.—The imports during the month have been on a moderate scale, and prices still continue firm. First pine deals and sidings of all sizes are scarce, and some good lines of these could be placed at satisfactory prices if quality good. Spruce deals are moving off fast, and stocks of some sizes are low, especially 8 and 9-inch. Current values as under: Broad first pine deals, £26 to £31; 11-inch, £24 to £26; ends and non-dimensions, £18 to £22. Second pine deals—11-inch and up, £18 10s to £21; non-dimensions, £12 10s to £15. Third pine deals—11-inch and up, £12 to £13; ends and non-dimensions, £8 10s to £10 10s. Fourth pine deals—11-inch and up, £9 10s to £10; narrows, £7 10s to £8 5s. Red pine deals—9 and 11 inch, £10 to £12; narrows, £7 to £8. First pine sidings and strips—9 and 10-inch average, £18 to £20; 11 to 12 inch average, £21 to £24; 13 to 14 inch average, £25 to £26. Spruce deals—9-inch and up, £8 10s to £9 10s; 7 and 8 inch, £7 5s to £8 5s. Lower port pine and spruce—9-inch and up, £8 10s to £9; 7 and 8 inch, £7 to £7 15s.

BIRCH SQUARES AND SEATS.

A large buyer of Birch chair seats and of Birch squares is open to contract with a mill for their output. Also open for Broom Handles and Dowels in large quantities. Write in first instance to "Finance," care of CANADA LUMBERMAN.

THE CLEVELAND-SARNIA SAW MILLS CO., LIMITED

SARNIA, ONT.

Manufacturers and
Wholesale Dealers in

Band-Sawed Timber and Lumber

White Pine Lath

Daily capacity 250,000 feet

Special bills cut to order in

WHITE PINE RED PINE HEMLOCK and FIR

CORRESPONDENCE SOLICITED.

CANADIAN LUMBER SHIPMENTS.

From Yarmouth, N.S.: Barque, Recon-
-scoeur, for France, 507,000 ft. deals
and ends, value \$7,408, by Dickie & Mc-
-Crath.

From Halifax, N. S.: Str. Ida, for
Sharpe's, Eng., 1,790,259 ft. deals, etc.,
value \$19,505. Barque Drot, for Alexan-
-dria Dock, Eng., 983,031 ft. de ls. etc.,
value \$9,803.

From St. John, N.B.: Schr. Pardon,
for Atlantic City, 9,385,000 laths, by A.
-Cushing & Co. Schr. Rewa, for New
-York, 215,247 ft. deals, 812 ft. boards, by
-A. Cushing & Co. Schr. Myra, for New
-Haven, 31,458 ft. boards, 96,534 ft. scantling,
by J. M. Driscoll. Schr. Daniel C.
-Baker, for Lubec, 40,000 herring box
-shooks, by J. R. Warner & Co. Schr.
-Prudent, for Westerly, 1,654,000 shingles,
by J. E. Moore. Schr. Hattie Muriel, for
-Middleton, Conn., 605,000 laths by A.
-Cushing & Co. Schr. Joliette, for Bos'on,
105,000 ft. deals, by Stetson, Cutler & Co.
Schr. Agnes May, for Westerly, 122,000
ft. boards, by N. H. Murchie. Schr.
-Frank and Ira, for Westerly, 120,388 ft.
boards, by Stetson, Cutler & Co. Schr.
-Alice Maud, for Salem, 134,744 ft. boards,
by Stetson, Cutler & Co. Schr. Jennie C.,
for Westerly, 65,500 ft. boards, 150,000
laths, 500,000 cedar shingles, by Stetson,
Cutler & Co. Schr. Ida May, for Bridge-
-port, 64,741 ft. scantling, 98,232 ft. plank,
by A. Cushing & Co. Schr. Fanny, for
-New Bedford, 1,410,000 shingles, by D. J.
-Seely & Son.

birch, by McLaurin Bros; 6,676 pieces
deals, by McArthur Export Co; 132 pack-
-ages pulp boards, by Laurentide Pulp Co.
Str. Concordia, sailed September 4th, for
-Glasgow, 12,365 pieces deals and ends, by
-J. Burstall & Co; 5,163 pieces deals, by
-McArthur Export Co; 380 pieces birch
-planks, by Dobell, Beckett & Co; 3,836
-pieces deals by McLaurin Br. Str. L. ke
-Champlin sailed August 31st, for Liver-
-pool, 8,162 pieces lumber, by J. Burstall &
-Co; 17,822 pieces lumber, by Watson &
-Todd; 1,930 pieces lumber, by Dobell,
-Beckett & Co; 10,667 pieces lumber, by
-W. Edwards & Co; 7,875 pieces lumber,
-by McLaurin Bros; 1,181 bundles sailed
-lumber, by G.T.R. Str. Monterey, sailed
-September 5th, for Bristol, 250 bundles
-pulp board, by Laurentide Pulp Co; 1,663
-pieces lumber, by Montreal Lumber Co;
-4,177 pieces lumber, by Dobell, Beckett &
-Co; 1,109 pieces lumber by R. Cox & Co;
-20,242 pieces lumber, by Watson & Todd;
-951 pieces lumber by McLaurin Bros. Str.
-Ottoman, sailed September 7th, for Liver-
-pool, 2,203 pieces deals and boards, by
-McArthur Export Co; 2,532 pieces deals
-and boards, by R. Cox & Co; 13,401
-pieces deals and boards, by Watson &
-Todd; 71 pieces lumber, by C.P.R. Str.
-Gulf of Arcud, sailed September 7th, for
-Antwerp 2,422 pieces deals, 6,341 pieces
-boards, by Dobell, Beckett & Co. Str.
-Skuld, sailed September 10th, for New-
-castle, 8,486 pieces deals, by R. Cox &
-Co; 18,572 pieces deals, by Dobell,
-Beckett & Co; 5,524 pieces deals, by W.
-J. Sharple; 7,134 pieces deals, by E.H.
-Lemay; 8,147 pieces deals, by McArthur
-Export Co. Str. Alexandrian, sailed

September 11th, for Antwerp, 834 pieces
lumber, by C. P. R. Str. Lake Ontario,
sailed September 11th, for Liverpool,
12,851 pieces lumber, by Charlemagne

Lumber Co; 3,348 pieces lumber, by
Dobell, Beckett & Co; 8,280 pieces
lumber, by Watson & Todd; 411 pieces
lumber, by Imperial Lumber Co.

THE IMPERIAL LUMBER CO. LIMITED
RED AND WHITE PINE DEALS

MASON, GORDON & CO.
WHOLESALE TIMBER
Montreal, Quebec
Eastern Agents The R.C. Mills, Timber & Trading
Co., Vancouver, B.C.
DOUGLAS FIR Timber in any size or length supplied
WRITE FOR PARTICULARS AND QUOTATIONS.

TELEGRAPH POLES
We are prepared to buy Telegraph Poles,
all lengths, in any quantity.
J. B. FARWELL & SON
Orillia, Ont. Oswego, N. Y.

CACHE BAY LUMBER INDUSTRIES.

Geo. Gordon & Co.,
Manufacturers of RED and WHITE PINE
Band - Gang LUMBER
Circular AND LATH
CACHE BAY, Ont. 26 miles West North Bay.

CACHE BAY PLANING MILL CO.
... MANUFACTURERS OF ...
CROSS ARMS
MOULDINGS
GEILING
FLOORING
WAINSCOTING
SHEETING
And all kinds of Dressed Pine Lumber.

THE NEW LINE
Through the Spruce Forests of the Laurentian
Mountains—between Quebec and Hawkesbury.
WATER-POWERS, TIMBER LIMITS and ELECTRIC
POWER FOR SALE. IDEAL PULP-MILL SITES.
Unexcelled Export Facilities at Quebec.
J. G. SCOTT, Gen. Mgr. QUEBEC GUY TOMBS
O. P. F. & A.

FRANK A. CUTTING
BUYER OF
Hemlock Bark
And the only Dealer who
can furnish Cutting Patent
Bark Cars for Shippers.
116 BEDFORD ST., - - - BOSTON, MASS.

From Montreal: Str. Jacona, sailed
September 4th, for Leith, 4,513 pieces
deals, boards, etc., by R. Cox & Co; 12-
-513 pieces deals and ends, by J. Burstall
-& Co; 5,586 pieces deals and ends, by
-McLaurin Bros; 2,941 pieces deals, by
-Watson & Todd; 2,606 pieces deals and
-boards, by Dobell, Beckett & Co; 1,244
-pieces deals, by G.T.R. Str. Manchester
-Commerce, sailed September 4th, for
-Manchester, 10,432 pieces deals and ends,
-7,474 pieces boards, by R. Cox & Co; 1812
-bundles hardwood, by Canadian Atlantic
-Railway; 1,231 pieces lumber, 311 pieces
-flooring, 2,646 pieces deals, 4,107 boards,
-by Imperial Lumber Co; 4,171 pieces
-deals, by Watson & Todd; 2,159 pieces
-ends, by Watson & Todd; 4,131 pieces
-deals, by W. & J. Sharple; 26 pieces

FOR SALE.
A number of very valuable pine and other timber
limits on the north shore of Lake Huron and elsewhere
for sale. Also limits bought and sold on commission
and estimates given. For particulars, apply to
P. McDERMETT,
Box 177, South River, Ont.

Subscribe for **THE LUMBERMAN**, \$1 a Year.
J. D. SHIER LUMBER CO., LIMITED,
BRACEBRIK GF, ONT.
MANUFACTURERS OF
LUMBER, LATH AND SHINGLES
Pine, Hardwood and Hemlock Floorings
and Ceilings. Sash and Doors, Wood Turnings,
etc. All Dressed Lumber Kiln Dried if desired.
End Matched Flooring a Specialty.
Planing Mill in connection.

PINE LUMBER **Get our Prices** **HARDWOOD LUMBER**
THE ORILLIA EXPORT LUMBER CO.
High Grade Pine, Rough or Dressed
British Columbia Red Cedar Shingles a specialty
LATH **ORILLIA, ONT.** SHINGLES

KILN-DRIED BIRCH FLOORING SHEETING GEILING

HEMLOCK SOFT & ROCK ELM, BASSWOOD, BIRCH, WHITE QUARTZ, PLAIN SAW, MAPLE, BLACK ASH, CEDAR, PINE.
HEMLOCK Hardwood
"We are now cutting two million Hemlock, 22 to 34 feet long, and would like your bill timber specifications."
Write for Quotations. **OWEN SOUND, ONT.**

Flooring from \$14.00 Ceiling " 12.00 SAMPLES BY MAIL KNIGHT BROTHERS CO. Burk's Falls, Ont.

F. MCGIBBON & SONS, PENETANGUISHENE ONT.
Manufacturers of Pine, Hemlock and Hardwood Lumber, and dealers in Cordwood
Hemlock Bills cut on short notice.

O. Dufresne, Jr. & Frere
WHOLESALE LUMBER
Montreal - - - Canada
have at present for sale at various points of shipment, by either rail or water route, on
to Ottawa River, pine cuttings of different grades from seasons 1900 and 1901. Will
quote upon small lots or heavy blocks
Correspondence Solicited

TIMBER LIMIT TRANSACTIONS.

Several important transactions in timber limits have taken place during the past week. Munro Bros., of Pembroke, disposed of a large limit on the Jocko river, in the Mattawa district, to J. B. and W. H. Fraser, of Ottawa. The figure is given as \$225,000. The limit was purchased by Munro Bros. two years ago for \$150,000, and it is said that since that time they

have taken off logs and square timber to the value of probably \$230,000.

The Rideau Lumber Company last week disposed of their limits on the Dumoine river to the Pembroke Lumber Company, of Pembroke, Ont., for a sum in the vicinity of \$200,000.

Edward Moore, of Ottawa, is reported to have sold a limit on the Black river to McLachlin Bros., of Arnprior, but the report is not confirmed.

A. B. Hunt, of Bury, Que., has sold to T. A. Vandyke and others, of New Hampshire, 2,500 acres of timber land located near Bury Village, the price being \$13 per acre.

Allen Francis, of Renfrew, is reported to have recently purchased a timber limit in the Sault Ste. Marie district at figures said to approach the \$200,000 mark.

Limits in townships of Jarvis and Anderson, estimated to contain 50,000,000 feet,

have been purchased by James McFadden, of Ottawa, and a limit in the township of Chesley has been purchased by N. Dymont.

The sash and door factory of W. W. Harper, of Charlottetown, P. E. I., was completely destroyed by fire on September 9th. The loss is estimated at \$3,000, with no insurance.

Quebec
Montreal
Ottawa
Three Rivers

DOBELL, BECKETT & CO.,
TIMBER, DEAL and LUMBER EXPORTERS.

London, Eng. RICHARD R. DOBELL & CO.,
110 Cannon Street, E. C.

H. D. WIGGIN BOSTON, MASS.
89 STATE ST.
will inspect at mill and PAY CASH for
LOG RUN
Elm, Ash, Bass and other Hardwoods
CORRESPONDENCE SOLICITED.

For Sale
Cascapedia and Skimencac Rivers.
Saw Mill, Timber Limits and Water Power.
Price reasonable
H. M. SIMPSON,
29 Canada Life Building,
189 St. James Street MONTREAL

QUEBEC.

H. R. GOODDAY & CO.,

SPRUCE AND RED PINE EXPORTERS

LONDON, ENG.

AGENT ... **FOY, MORGAN & CO.,**
104 and 105 Bishopsgate St. W., E. C.

MAITLAND, RIXON & CO. OWEN SOUND, ONTARIO.

Manufacturers and Dealers

LUMBER, LATH, TIES, POLES, SHINGLES, ETC.

Make a Specialty of Long Pine, Cedar and Hemlock Bill Stuff.
WE SHIP BY C.P.R., G.T.R. AND BY WATER

Veneers, Hardwoods, Ash, Elm, Birch, Basswood—Clothboards—Cheese Box Bands and Rims.

THE PATENT CLOTHBOARD CO., of Parry Sound, Limited, Parry Sound, Ont

AUGER & SON - Quebec
:: DIMENSION TIMBER ::

Sawn to Sizes—Telegraph Poles, Railway Ties, Spruce and Poplar Pulpwood.

THE ONTARIO LUMBER CO.

LIMITED
Mills: North Bay, C.P.R. and G.T.R. Delivery.

MANUFACTURERS OF
WHITE PINE LUMBER, LATH AND SHINGLES.

35 and 36 Home Life Building
TORONTO, Ont.
MILLS: French River, Georgian Bay. Water Shipment Only.

The Pearce Company

Limited

MARMORA - - - ONTARIO

WRITE US FOR PRICES ON HEMLOCK BILL STUFF.

BOOTH & GORDON

—MANUFACTURERS OF AND DEALERS IN—

Sawn and Planed Lumber, Dimension Timber, Joisting, Car Sills, Car Flooring and Lath
AZILDA, - - - ONT.
C. P. R., NEAR SUDBURY

J. S. O'BRIEN, ANTIGONISH, NOVA SCOTIA
HEADQUARTERS FOR HARDWOOD LUMBER

CHAIR STOCK A SPECIALTY

Prompt Delivery Guaranteed. Mills running Summer and Winter.
Regular Communication with British Ports all the Year. Correspondence Solicited

A. F. BURY AUSTIN
WHOLESALE LUMBER and TIMBER
CANADA PINE

Room 507, Merchants Bank of Canada Building - MONTREAL, CANADA
SPECIALTIES: Railway Bridge Timber and all kinds of Hardwoods; Ship Decking, Norway and White Pine, Dimension Timber, Norway Car Sills, Car Flooring, Telegraph Poles, Railway Ties, Oak and Whitewood, Planed and Rough Lumber, British Columbia Pine, Southern Pine, &c.; Birch Flooring, hollow back, end butted.

Sole Eastern Agent for The North Pacific Lumber Company, Limited, Barnet, B. C.
Douglas Fir Timber in any size or length up to 90 feet long. Timber Planes face up to 24 inch x 30 inch
Dry Kilns of large capacity. Rough and Dressed Lumber, Douglas, Fir and Cedar.

WRITE FOR PARTICULARS AND QUOTATIONS.

ALEXANDER MACLAREN
BUCKINGHAM, Que.
PRESIDENT

H. DEPENCIER,
BARNET, B. C.
MANAGER.

THE NORTH PACIFIC LUMBER COMPANY
LIMITED
BARNET, B. C.

Mills on Burrard Inlet and Canadian Pacific Railroad

FIR AND CEDAR

Lumber and Timber
Rough and Dressed.
In all sizes and quantities.

DIMENSION TIMBER.

SHIP Decking, Timbers, Spars.

HOUSE Flooring, Siding and Finish of all kinds.

EASTERN AGENT: A. F. BURY AUSTIN, 507 Merchants' Bank of Canada Bldg., MONTREAL, Que.

EXCLUSIVELY
HAND SAW
LUMBER
and TIMBER.
Car and Cargo.

TIMBER PLANERS

FACE UP TO
24" x 30"

DRY KILNS of large capacity.

CAR Sills, Decking, Siding and Roofing.

CANADA ATLANTIC RAILWAY

... operating ...

OTTAWA & NEW YORK LUMBER LINE
OTTAWA & BOSTON LUMBER LINE
CANADA ATLANTIC TRANSIT COMPANY.

... Shortest and Quickest Route from ...
OTTAWA, ROCKLAND, HAWKESBURY, ARNPRIOR, PEMBROKE, PARRY SOUND and other Lumber Centres, TO BOSTON, PORTLAND, NEW YORK, DETROIT, TORONTO, QUEBEC, HALIFAX, ST. JOHN, &c.

H. B. MUSKIE, Contracting Agent
M. A. OVEREND, Foreign Freight Agent,
26 St. Sacramento St., Montreal.

E. R. BREMNER, Asst. General Freight Agent, Ottawa.
W. P. HINTON, General Freight Agent, Ottawa.

Scribner's Lumber and Log Book

A handy book for Lumbermen. Gives Correct Measurements of Scantlings, Boards and Planks; Cubical Contents of Square and Round Timber; Doyle's Rules, and much other practical information.

Price 35 Cents

Address:

THE CANADA LUMBERMAN
TORONTO, ONT.

CANADIAN MANUFACTURERS and WHOLESALERS

THE PEMBROKE LUMBER CO. LIMITED

Pembroke, Ont.

DIMENSION TIMBER A SPECIALTY. WRITE OR WIRE FOR QUOTATIONS. ROUGH AND DRESSED LUMBER IN ALL GRADES AND SIZES. Car-Sills. Ship-planking. Jump-stock. Turning-squares, Etc.

DIMENSION TIMBER Up to 60 feet in length

SASH and DOOR SKEWERS

JOHN HARRISON & SONS COMPANY LIMITED

SAW and PLANING MILLS PINE and HARDWOOD Lumber and Timber Manufacturers OWEN SOUND, ONT.

WANTED

4 x 4 CEDAR FOR 1902 DELIVERY

We are open to make contracts for this class of stock 10 to 16 feet long to be cut and shipped through the year 1902 in from one to ten car lots; can take it dry or green.

Address, REID & CO., Esplanade Street, Toronto

When in the market for Pine or Hardwood

Lumber

Write or telephone us

THE OLIVER LUMBER CO., OF TORONTO, LIMITED

84 Canada Life Building, Toronto. Tel. Main 365.

RHODES, CURRY & CO., Limited

LUMBER MERCHANTS.

Yards at Amherst, Little Forks, Sydney and Halifax.

BUILDING MATERIAL of all kinds carried in stock. We are buyers of Ontario Basswood, Elm and Pine.

Amherst, N.S.

SQUARE and Sawn Spruce and Pine Lumber, Dimension Timber, Birch, Ash, Tamarac, B.C. Fir and Cedar, Flooring, Shingles, &c.

JAMES J. MURPHY, 28 St. James St, Quebec

BOOTH & SHANNON, BISCOTASING, ONT.

MANUFACTURERS OF

Red and White Pine Lumber, Lath and Shingles.

Shipments promptly attended to.

Inquiries answered by return mail

So long as there shall continue to exist a demand for choice selected stock, we hope to be there with a supply. Write us.

R. LAIDLAW LUMBER CO., 18 Toronto St. TORONTO.

JAS. PLAYFAIR & CO.

Manufacturers and Wholesale Dealers

LUMBER • LATH • SHINGLES

Contractors for Railway Supplies BILL TIMBER a Specialty . . .

MIDLAND, ONT.

A. & P. WHITE

Manufacturers of and Dealers in

Sawn and Planed Lumber, Dimension Timber, Joisting, Car Sills, Car Flooring, Shingles and Lath.

PEMBROKE, ONT.

A quantity of 6x6, 6x8 8x8, 8x10 and 10x10x18 ft. and up White Pine Dimension Timber, for sale

Robert Watt - Wiarton

MANUFACTURER OF AND WHOLESALE DEALER IN

LUMBER

of all kinds, Pine Lath, Cedar Shingles and Posts. Dressed Pine and Hardwood Flooring, Lumber resawn into Dimension Stuff such as Crating, Table Legs, Chair Rungs, Etc. Cedar and Hemlock Mill Stuff Cut to Order

Shipment by Rail or Water.

Correspondence Solicited.

The Siemon Bros.' Factories and Mills

Operated by CANADA FURNITURE MFRS., Limited.

WIARTON, ONT.

LUMBER MERCHANTS AND MANUFACTURERS

We manufacture and deal in Hard and Soft Wood Lumber and Timber, Ties, Cedar Posts and Shingles. Correspondence invited. Shipping facilities, Rail and Water.

WILLIAMSON & MORRISON

Mills at L'Orignal, Ont.

LUMBER

HEAD OFFICE:

30 St. John Street, MONTREAL, P.Q.

WHOLESALE

Turner Lumber Co., Limited

MANUFACTURERS

LUMBER and LATH

Shipments by Rail or Water.

Midland, Ont.

Cable Address: GILMOUR, TRENTON

MAIN OFFICES: TRENTON, ONTARIO

CODES { A B C LUMBERMAN'S ZEBRA

ESTABLISHED 1820

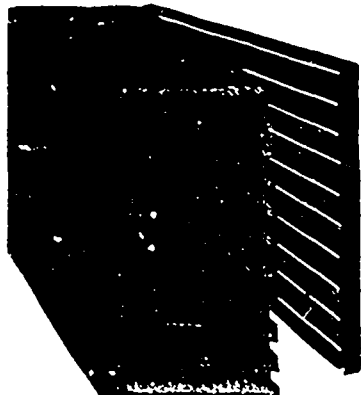
ESTABLISHED 1820



GILMOUR & CO., LTD.

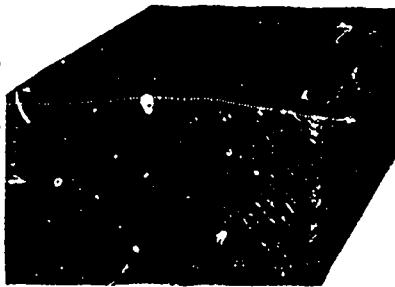
TRENTON, CANADA

BRANCH OFFICES IN: London, Eng. New York Chicago Glasgow Capetown, S. Africa Sydney, Australia



SECTION SHOWING PROCESS

PATENT LUMBER



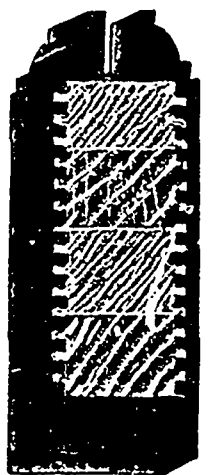
SECTION PATENT LUMBER

Saw Mills, Patent Lumber, Door, Sash, Box and Veneer Factories

Capacity of Mills and Factories

25,000,000 feet per year

OUTPUT: 300,000 DOORS Per Year.



STILE SECTION

Manufacturers of—SASH, DOOR and BOX FACTORY GOODS, LATH, SHINGLES, RAILROAD TIES, TELEGRAPH POLES and POSTS, JOINERY, FINE INTERIOR FINISH, HARDWOOD FLOORING, Etc. EGG CASES, EGG-FILLERS. Write or Wire for Samples and Price Lists.

Responsible Agents Wanted in all Parts of the World

ORDERS PROMPTLY FILLED

GILMOUR & COMPANY, LIMITED

TRENTON, CANADA

TIMBER STATEMENT.

Following is a comparative statement for three years of the timber, etc., measured and culled at the port of Quebec up to 29th August, 1902, as reported by the Supervisor of Cutters:

	Cu. ft. 1900	Cu. ft. 1901	Cu. ft. 1902
Waney white pine	1,366,523	1,321,723	1,591,600
White pine	507,375	535,740	798,600
Red pine	61,112	59,184	60,050
Oak	451,820	444,040	527,700
Hem	611,026	911,913	641,800
Ash	28,355	131,612	79,240
Basswood	241	914	...
Hutternut	142	914	...
Tamarac	71	128	...
Birch and Maple	457,154	307,039	164,500

THE BOSTON MARKET.

The demand for spruce lumber at Boston is very low, and in face of the fact that the cut was a small one, leaving the mills rather short of logs, the tone of the market is firm. Quotations are fully sustained: Ten and 12-inch dimensions, \$21; 9-inch and under, \$19; 10 and 12 inch random lengths, 10 feet and up, \$20.50;

2x3, 2x4, 2x5, 2x6, 2x7, and 3x4, 10 feet and up, \$17 to \$17.50; all other randoms, 9-inch and under, 10 feet and up, \$18 to \$18.50; 5-inch and up, merchantable boards, \$17; matched boards, \$18 to \$20; out spruce boards, \$14; bundle furring, \$17.

Hemlock is in small supply, and in few hands, with the market firm, though quiet. Boards, 12, 14 and 16 feet stock, \$14.50 to \$15.50 for good eastern; Pennsylvania, No. 1, \$16 to \$17.50; No. 2, \$15 to \$15.50.

The white pine position continues very firm, though trade is quiet: Uppers, 1 to 2 in. \$82.50 to \$85; 2 1/2 to 3 in. \$87 to \$88; 4-in. \$90; selects, 1 in. \$65; 1 1/4 to 1 1/2 in. \$70; 2-in. \$72; 2 1/2 to 3 in. \$80; 4 in. \$82; fine common, 1-in. \$62 to \$63; 1 1/4 to 1 1/2 in. \$65; 2-in. \$67.50; 2 1/2 to 3 in. \$72.50; 4-in. \$82.50; barn boards, \$23 to \$33; coffin boards, \$28 to \$32.

Hardwood lumber continues generally firm, with a fair demand: Quartered oak,

\$66 to \$68; plain oak, \$4. to \$45; common and rejects, \$20 to \$25; red oak, plain, \$43; whitewood, \$4. to \$43; sap and common, \$30 to \$35; brown ash, \$41 to \$44; white ash, \$43 to \$46; maple, \$28 to \$30; end-dried white maple, \$38 to \$42; birch, \$27 to \$30; birch, 75 per cent. red, \$45 to \$50; elm, \$29 to \$31.

Shingles are firmer, with shippers and dealers getting 10 cents advance: Extra cedar, \$3.60; clear, \$3.15; second clear, \$2.55; extra No. 1, \$1.90 to \$2; British Columbia red cedar, 16-inch, five butts to 2 inches, \$2.75 to \$3.80; 18-inch, \$4.25 to \$4.50.

Clapboards continue very firm: Clear,

\$40 to \$42; second clear, \$37 to \$39; extra No. 1, \$22 to \$32.

Laths are firmer, under the fact that New York has advanced 25 cents: One and five-eighths inch, \$3.15; 1 1/2 inch, \$3.

WANTED

MESSRS JOSEPH OWEN & SONS, Ltd., of Liverpool, Eng., are open to treat for regular supplies of large quantities of HARDWOOD LUMBER, and will be glad to hear from holders who have to offer WHITE ASH, WHITE OAK, SCALY BARK and SECOND GROWTH HICKORY, POPLAR and WALNUT in logs, planks and boards, also prime fresh BIRCH LOGS of large dimensions.
Cable address, "Owen, Liverpool." A. B. C. Code used

ARTHUR RUSHFORTH
Exporters of *Manogany* Logs and Lumber
Veneer Logs and Gratches, English Brown and Pollard Oak.
12 Derby Road, LIVERPOOL.

Cedar Cove Mill,
Vancouver, B.C.

E. H. HEAPS & CO.

Ruskin Mill,
Ruskin, B. C.

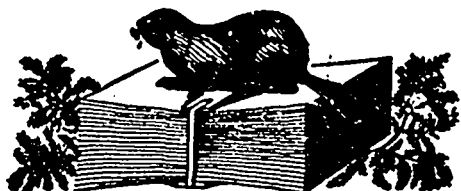
MANUFACTURERS OF

Lumber, Lath, Shingles, Doors, Mouldings, Etc.

SPECIALTIES:

AA1 HIGH GRADE CEDAR SHINGLES.

Cedar Bevelled Siding, Cedar Door and Sash Stock, cut to size, Cedar Finish, Base, Casing, Newels, Balusters, etc. Douglas Fir Timber up to 85 feet in length.



SPICER SHINGLE MILL CO., LIMITED

MANUFACTURERS OF

**Red . .
Cedar
Shingles**

VANCOUVER, B. C.

The HASTINGS SHINGLE MANUFACTURING CO., LIMITED

Head Office: - - - VANCOUVER, B. C.

MILLS:

- Shingle, - - - Whatcom, Wash.
- " - - - Sumas, Wash.
- " - - - Carroll Siding, Wash.
- " - - - Nooksack, Wash.
- " No. 1 - Vancouver, B. C.
- " No. 2 - Vancouver, B. C.
- Saw Mill - - - Vancouver, B. C.
- Planing Mill - - Vancouver, B. C.

OUR SPECIALTY:

Dimension Shingles in Plain and Fancy Butts.

4 x 16 6/2 inch Butts	3 x 20 1/2 inch butts
5 x 16 6/2 " "	3 1/2 x 20 1/2 " "
6 x 16 6/2 " "	4 x 20 1/2 " "
4 x 16 5/2 " "	4 1/2 x 20 1/2 " "
5 x 16 5/2 " "	5 x 20 1/2 " "
6 x 16 5/2 " "	5 1/2 x 20 1/2 " "
4 x 18 5/2 " "	6 x 20 1/2 " "
5 x 18 5/2 " "	7 x 20 1/2 " "
6 x 18 5/2 " "	5 x 24 1/2 " "
7 x 18 5/2 " "	6 x 24 1/2 " "
4 x 18 5/2 1/4 " "	7 x 24 1/2 " "
5 x 18 5/2 1/4 " "	5 x 24 9/16 " "
6 x 18 5/2 1/4 " "	6 x 24 9/16 " "
7 x 18 5/2 1/4 " "	7 x 24 9/16 " "

BRITISH WOOD BROKERS AND IMPORTERS

FARNWORTH & JARDINE

Wood Brokers and Measurers

Cable Address, "Farnworth," Liverpool. Dale Street and Canada Dock, LIVERPOOL, ENG.

WRIGHT, GRAHAM & CO. Wood Brokers

Royal Bank Place GLASGOW, SCOTLAND Cable Address: "Farnworth," Glasgow
Codes U 4d: Watkin's, Scott's, A.B.C. Lumberman's, Zebra; Private.

Agents for the sale of CANADIAN WHITE PINE AND SPRUCE, cut to all sizes—and all kinds of Hardwood's in Log, Lumber and Dimension Stock. Shipments to any of the principal ports in the United Kingdom or continent handled to the best advantage.

Cable Address: SINGLETONS, Glasgow. ABC, At and Lieber's Codes.

SINGLETON, DUNN & CO.

WOOD BROKERS
27 Union Street - GLASGOW

F. A. Lightbody & Co.

8 Gordon Street - GLASGOW, SCOTLAND

WOOD BROKERS

Cable Address: "TENEBRIS," GLASGOW. Codes: A. B. C., A 1, "Zebra" and Private.

Agents for CANADIAN WHITE PINE AND SPRUCE; Hardwoods in Log, Etc. Shipments handled to the best advantage to all ports in the United Kingdom. Correspondence Solicited.

Telegraphic Address—"WAINSCOT," GLASGOW.

BUCHANAN & FRENCH

WOOD IMPORTERS AND MERCHANTS

Albert Saw Mills, BRUNNEN, and St. Enoch Square, GLASGOW.

Dealers in Birch, Walnut, Ash, Oak, Canary Whitewood, Pine, Spruce, &c.

DEPOTS: BARKING, LIVERPOOL, NEWCASTLE-ON-TYNE, HULL AND BRISTOL

JONAS SMITH & CO.

Telegraphic Address: MOULDING, LONDON 92 to 98 Belvedere Road, LAMBETH, S. E.

Moulding and Joinery Manufacturers, Etc. IMPORTERS OF: Pine Doors, Mouldings

C. LEARY & CO. Wood Agents and Brokers

4 Lombard Court, Gracechurch Street, LONDON, E.C., ENGLAND.

MORGAN, GELLIBRAND & CO.

.. WOOD AGENTS ..
Established 1808.

Cable Address: GELLIBRAND, London. 20 Bishopsgate St. Within, LONDON, E.C.

A. KENNEDY

48 West Regent Street - GLASGOW, SCOTLAND

BUYER OF BOX SHOOKS, SPRUCE AND PINE DEALS

Invites correspondence from Manufacturers for shipment per regular liners. Cables: "BIRCH," Glasgow. Directory, A. B. C. and Zebra Telegraphic Codes.

Telegrams: "Burke, Belfast." Codes: A. B. C., Zebra Universal, Watkin's, Scott's & Private Codes

JOHN BURKE & CO. Wood Brokers and Merchants

Formerly H. ANDREWS & Co., Established 1833

BELFAST IRELAND.

Agents for Canadian white pine and spruce, cut to all sizes, and for all kinds of hardwoods in log, lumber and dimension stock. Shipments handled to the best advantage at all ports in Ireland. Correspondence solicited.

Consular Offices of Austro-Hungary, France, Italy, Portugal and Uruguay.

Codes: A B C 4th and 5th Edition, Zebra, Lumberman's, Western Union.

WALCOT, LIMITED

Wood Brokers and Agents

Cable Address, Walcot, London. 17 Gracechurch St., London, Eng.

SMITH & TYRER - 14 Canada Dock, LIVERPOOL

.. WOOD AGENTS ..

Cable Address—"Walmer," Liverpool. Halifax, N.S., Office—SMITH, TYRER & CO., Metropole Bldg., Hollis St., Halifax, N.S.

Cable Address: "ALLISON," Glasgow.

ALLISON, COUSLAND & CO. Wood Brokers

154 St. Vincent St., GLASGOW

GANT & KEMP TIMBER BROKERS

52 St. Enoch Square, GLASGOW

Cable Address: "TECTONA" Glasgow. At and A B C Codes used.

CHURCHILL & SIM TIMBER BROKERS

Cable Address: "CHURCHILL" London.

Cable Address: "INVIGORATE" Liverpool.

29 Clements Lane, London, E. C.

Albert Buildings, 22 Pineons Row, Liverpool, Eng.

ZEBRA CODE

A. B. C. CODE

DIRECTORY CODE

GELLIBRAND, HEYWOOD & CO.

Wood Agents and Brokers

Cable Address: "GELLIBRAND, CARDIFF," Western Mall Chambers, CARDIFF

Cable Address: "SPRUCE, BRISTOL."

ARTHUR BEACHAM

(Manager to the late firm of Messrs. King Bros.)

WOOD BROKER

Surveyor, Arbitrator and Valuer.

OFFICES: 73 Que Square, Bristol.

Avonmouth Dock and Bristol

A. B. C. Code,

A. I. Code.

Agents & Private Codes

BRYCE, JUNIOR & WHITE, TIMBER BROKERS AND AGENTS,

CABLE ADDRESSES: Trigonial, Bristol, 26 Baldwin St. Tallman, Glasgow, 66 St. Enoch Sq. Noccasin, London, 22 Bastughill St.

BARTON THOMPSON & Co.,

Colonial House

WOOD BROKERS

155 Fenchurch St., LONDON, E.C.

CABLES: LUMBERING, LONDON

All Standard Codes used

Cable Address: "Pocahontas, London." Codes: A1 and A.B.C., 4th Edition, Lieber, Western Union

Geo. Rogers, Son & Co.

22 Great St. Helen's - LONDON, E.C.

Agents Wood Specialties of all Description.

CORRESPONDENCE INVITED

FELBER, JUCKER & CO. Lumber Importers

MANCHESTER

ENGLAND

Invite offers from Lumbermen for Spruce Deals and Battens, Spruce and Pine Floorings, Shooks, Sashes, Mouldings, Dowels, Broom Handles, Chair Stock, Seats, etc. or any Woods suitable for English Market.

Telegraphic Address: FELBER MANCHESTER

JAMES W. SOUTHERN & SON MANCHESTER, ENGLAND

Are open to represent a firm of door manufacturers not at present represented in the North of England.

Cable Address: LIGNUM, Manchester. A B C Code

Is it your wish . . .

To Purchase or Sell as quickly as possible

A PARTICULAR LOT OF LUMBER

OR A MILL PROPERTY

SECOND-HAND MACHINERY

An Advertisement in the "Wanted" and "For Sale" Department of the CANADA LUMBERMAN WEEKLY EDITION

Will secure for you a Buyer or Seller, as the case may be. Address, The Canada Lumberman, Toronto

THOMPSON, BLOIS & KJELGREN

AGENTS AND BROKERS FOR ALL KINDS OF LUMBER AND LOGS

CASH ADVANCES MADE AGAINST SHIPPING DOCUMENTS

BRANCH OFFICE 41 Corporation St., MANCHESTER

HEAD OFFICE 17 Gracechurch St., LONDON, E.C.

BRANCH OFFICE Brook 1, HAMBURG

Do You Ship in Car Lots?

If so you should have the

RED BOOK

The recognized authority on lumber credits. It contains the names of concerns engaged in the following lines, together with their financial standing:

Lumber Lines—Cedar Posts, (Dealers and Manufacturers), Interior Finish Manufacturers, Moulding Manufacturers, Lumber Dealers, Wholesale and Retail, Planing Mills, Saw Mills, Sash, Door and Blind Dealers and Manufacturers, Stair Builders (Operating Mill), Wood Box Manufacturers, Hardware Dealers, carrying stock of sash, doors and blinds.

Manufacturers of Agricultural Implements, Cans, Carriages, Furniture, Chairs, Coffins, Desks, Ladders, Mowers, Organs, Parlor Frames, Pianos, Pl. & Reapers, Refrigerators, School and Sewing Machine Furniture, Show Cases, Store and Office Fixtures, Trunks, Veneers, Wagons, Wood Floors and Mantles, Wood Pumps, Woodware, Wind Mills.

The book is also a Bank Directory, Railroad Guide, Attorney's List, Express Directory, etc. Published in January and July and covers the United States and Manitoba. Thoroughly organized collection department in connection. Claims collected anywhere. Try us

Lumbermen's Credit Association

Established 1876. Suite 911 Tocoma Bldg. CHICAGO. Mention this paper.

Please mention the CANADA LUMBERMAN when corresponding with advertisers.

DIRECTORY OF ADVERTISERS

In "Canada Lumberman" Monthly Edition.

AXES

Campbell Bros., St. John, N. B. Dundas Axe Works, Dundas, Ont. Warnock & Co., Jas., Galt, Ont.

BELTING

Buchanan & Co., R. H., Montreal, Que. Canadian Oak Belting Co., Brockville, Ont. Durham Rubber Co., Bowmanville, Ont. Dominion L. Ather Co., Toronto. Fleming, W. A., Montreal, Que. P. H. Wilby, Toronto. Goodhue, J. L. & Co., Danville, Que. Lewis, Rice & Son, Ltd., Representing Hoyt's Belting.

DRY KILNS

A. H. Andrews Co., Chicago, Ill. American Blower Co., Detroit, Mich. McEachern Heating & Ventilating Co., Galt, Ont. Standard Dry Kiln Co., Indianapolis, Ind.

LUMBERMEN'S SUPPLIES

Reckardt, H. P. & Co., Toronto. Gartshore, John, Toronto. Long & Ero, T., Collingwood, Ont. Rice Lewis & Son, Toronto. Woods, Jas. W., Ottawa, Ont.

MACHINERY

Bridley, Levy & Weston Co., Toronto, Ont. Carrier, Laine & Co., Lewis, Que. Drake, F. J., Belleville, Ont. Dunbar & Sons, Woodstock, N. B. Earl Compound Engine Co., Mitchell, Ont. Lloyd Manufacturing Co., Kentville, N. S. Madison Williams, Port Parry, Ont. Nowry & Sons, B. X., Gravenhurst, Ont. P. Payette & Co., Penstanguishene, Ont. Robb Engineering Co., Amherst, N. S. Stuart-Arbutnot Machinery Co., Winnipeg. The E. Long Mfg. Co., Orillia, Ont. The Wm. Hamilton Mfg. Co., Peterboro', Ont. The Waterous Co., Brantford. Winnipeg Machinery & Supply Co., Winnipeg.

OILS

Commercial Oil Co., Hamilton, Ont. Queen City Oil Co., Toronto.

PULLEYS

Uodge Mfg. Co., Toronto, Ont.

PULP AND PAPER MILL MACHINERY

Bertram, John & Sons, Dundas, Ont. The Jencks Machine Co., Sherbrooke, Que. The Waterous Co., Brantford.

PAPER AND PULP MILL ENGINEERS

Drewsen Company, New York and Webb-Wallace, Jos. H., O.E. New York and Webb-Wood, Ont. Vogel, Chas. E., Ottawa.

SAW MANUFACTURERS

Burns, E. R., Saw Co., Toronto, Ont. Shury & Dietrich, Galt, Ont. Wee & Co., R., New York. The James Robertson Co., Montreal, Que. The Ottawa Saw Co., Ottawa, Ont.

WHOLESALE LUMBER DEALERS

Houston, G. T. & Co., Chicago, Ill, U.S.A

WIRE ROPE

Demolin Wire Rope Company, Montreal. Mussen & Co., Montreal, Que.

MISCELLANEOUS

Alexander Engraving Co. Babbitt Metal, Syracuse Smelting Works, Montreal, Que. Cordage, Independent Cordage Co., Toronto, Ont. Can. Office and School Furniture Co., Preston, Ont. Cableways, H. P. Macmillan & Co., Montreal. Embossed Mouldings, Boynton & Co., Chicago, Ill. Files and Rasps, Nicholson File Co., Port Hope. Lumber Hoses, Telfer & Clime Co., Montreal. Lumber Underwriters, New York. Legal, Denton, Duan & Boubtee, Toronto, Ont. Lumbering Tools, Thos. Pink, Pembroke, Ont. Machine Knives, Peter Hink, Galt, Ont. Saw Sharpening Wheels, Hart Emery Wheel Co., Hamilton, Ont. The Broadstreet Mercantile Agency, New York and Toronto. Turbines, Madison Williams, Port Parry, Ont. Tool Handles, Blyth Handle Works. Wire Mats, E. Greening Wire Co., Hamilton, Ont.

CURRENT LUMBER PRICES--WHOLESALE

TORONTO, ONT.

CAR OR CARGO LOTS.

Table listing lumber prices in Toronto, Ontario, including items like 1x8 & 9 No. 1 barn, 1x8 & 9 No. 2, Lath, per M, No. 1 white pine, No. 2 white pine, Spruce, and Red Pine.

HARDWOODS—PER M. FEET CAR LOTS.

Quality, 15 and 25 unless otherwise specified.

Table listing hardwood prices in Toronto, Ontario, including Elm, Hickory, Maple, Oak, and Walnut.

OTTAWA, ONT.

Table listing lumber prices in Ottawa, Ontario, including Pine, Spruce, Fir, and Hemlock.

Table listing lumber prices in Quebec, Quebec, including Cedar Shingles, Clear Butt, Pine Shingles, and Clear Butt.

QUEBEC, QUE.

WHITE PINE—IN THE RAFT

Table listing white pine prices in Quebec, Quebec, including Square white pine, First class Ottawa waney, and Michigan.

RED PINE—IN THE RAFT

Table listing red pine prices in Quebec, Quebec, including Measured off, according to average and quality, and In shipping order.

OAK—MICHIGAN AND OHIO.

Table listing oak prices in Quebec, Quebec, including By the dram, according to average and quality, and By the dram, according to average and quality.

ASH.

Table listing ash prices in Quebec, Quebec, including 14 inches and up, according to average and quality, and To average 16 inch.

BIRCH.

Table listing birch prices in Quebec, Quebec, including 14 inch average, 16, 17, 18.

DEALS.

Height spruce, according to mill specification, \$44 to \$46 for 1st, \$30 to \$32 for 2nd, \$28 to \$30 for 3rd, and \$24 to \$26 for 4th quality. F.O.B. batteries.

BAY CITY AND SAGINAW, MICH.

UPPKS AND SELECTS.

Table listing uppk and select prices in Bay City and Saginaw, Michigan, including Uppers, 1 n., 10 n. and up, and Selects.

FINE COMMON.

Table listing fine common prices in Bay City and Saginaw, Michigan, including 1 in., 8 in. and up wide, and 2 1/2 and 3 in.

B FINE COMMON OR NO 1 CUTTING.

Table listing b fine common or no 1 cutting prices in Bay City and Saginaw, Michigan, including 1 in., 7 in. and up wide, and 1 1/2 and 3 in.

STRIPS, A AND B (CLEAR AND SELECTS).

Table listing strip prices in Bay City and Saginaw, Michigan, including 1 1/2 in., 4, 5 and 7 in. wide, and 1 1/2 x 5 in. wide.

PINK COMMON OR C.

Table listing pink common or c prices in Bay City and Saginaw, Michigan, including 1 in., 4, 5 in. wide, and 1 1/2 in., 6 in. wide.

SKETCHED NO. 1 SHIRLING OR PRINCING STRIPS.

Table listing sketched no 1 shirling or princing strips prices in Bay City and Saginaw, Michigan, including 1 1/2 in., 4, 5, 6 in. wide.

BARN BOARDS OR STOCKS.

Table listing barn boards or stocks prices in Bay City and Saginaw, Michigan, including No. 1, 12 in., and No. 2, 9 in.

SHIPPY CULLS OR BOX.

Table listing shippy culls or box prices in Bay City and Saginaw, Michigan, including 1 in., 4 and 5 in. wide, and 1 in., 6 in. wide.

SHANKY CLEAR.

Table listing shanky clear prices in Bay City and Saginaw, Michigan, including 1 in., 3, 4, 5, 7, 8 and 9 in. wide, and 1 in., 6 in. wide.

SHINGLES, 18-IN.

Table listing shingles prices in Bay City and Saginaw, Michigan, including Pine, XXXX, and Clear Butts.

Table listing lumber prices in Albany, N.Y., including No. 1 White Pine, No. 2 White Pine, and Hemlock.

ALBANY, N.Y.

PINE.

Table listing pine prices in Albany, N.Y., including Uppers, 3 in. up, 1 1/2 in. up, 1 to 2 in., 2 to 3 in., 3 to 4 in., 4 to 5 in., 5 to 6 in., 6 to 7 in., 7 to 8 in., 8 to 9 in., 9 to 10 in., 10 to 12 in., 12 to 14 in., 14 to 16 in., 16 to 18 in., 18 to 20 in., 20 to 22 in., 22 to 24 in., 24 to 26 in., 26 to 28 in., 28 to 30 in., 30 to 32 in., 32 to 34 in., 34 to 36 in., 36 to 38 in., 38 to 40 in., 40 to 42 in., 42 to 44 in., 44 to 46 in., 46 to 48 in., 48 to 50 in.

LATH.

Table listing lath prices in Albany, N.Y., including Pine, Spruce, and Shingles.

SHINGLES.

Table listing shingle prices in Albany, N.Y., including Sawn Pine, ex. XXXX, Clear butts, and Smooth.

BUFFALO AND TONAWANDA, N.Y.

WHITE PINE.

(Wholesale selling price.)

Table listing white pine prices in Buffalo and Tonawanda, N.Y., including Uppers, 1, 1 1/2, 1 3/4 and 2 in., 2 1/2 and 3 in., 3 to 4 in., 4 to 5 in., 5 to 6 in., 6 to 7 in., 7 to 8 in., 8 to 9 in., 9 to 10 in., 10 to 12 in., 12 to 14 in., 14 to 16 in., 16 to 18 in., 18 to 20 in., 20 to 22 in., 22 to 24 in., 24 to 26 in., 26 to 28 in., 28 to 30 in., 30 to 32 in., 32 to 34 in., 34 to 36 in., 36 to 38 in., 38 to 40 in., 40 to 42 in., 42 to 44 in., 44 to 46 in., 46 to 48 in., 48 to 50 in.

The following quotations on hardwoods represent the jobber's buying price at Buffalo and Tonawanda:

Table listing hardwood prices in Buffalo and Tonawanda, N.Y., including 1st & 2nd, 2 inch, 1 1/2 to 2 in.

BLACK AND BROWN ASH.

Table listing black and brown ash prices in Buffalo and Tonawanda, N.Y., including 1st & 2nd, 6 inch up, 28 00 30 00.

BIRCH.

Table listing birch prices in Buffalo and Tonawanda, N.Y., including 1st & 2nd, 6 inch & up, red.

ELM.

Table listing elm prices in Buffalo and Tonawanda, N.Y., including 1st & 2nd, 6 in. & up, 20 00 22 00, and Common and culls.

MAPLE.

Table listing maple prices in Buffalo and Tonawanda, N.Y., including 1st & 2nd, hard, 20 00 22 00, and Common and culls.