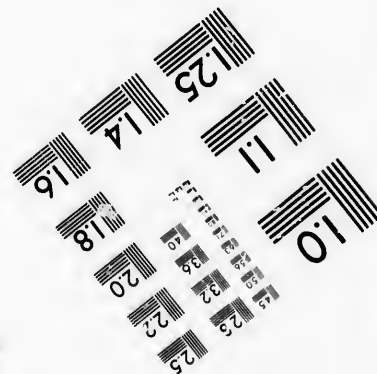
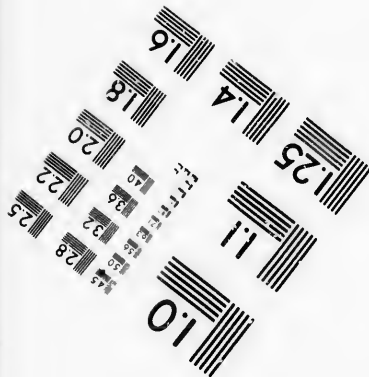
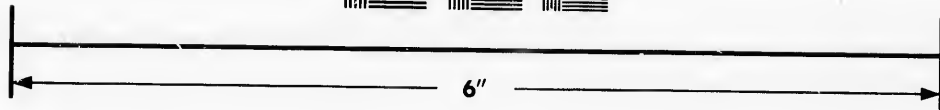
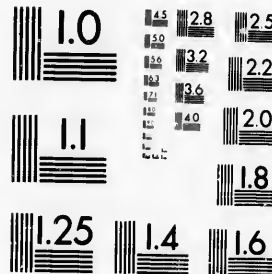


**IMAGE EVALUATION
TEST TARGET (MT-3)**



**Photographic
Sciences
Corporation**

23 WEST MAIN STREET
WEBSTER, N.Y. 14580
(716) 872-4503



**CIHM/ICMH
Microfiche
Series.**

**CIHM/ICMH
Collection de
microfiches.**



Canadian Institute for Historical Microreproductions / Institut canadien de microreproductions historiques



© 1986

Technical and Bibliographic Notes/Notes techniques et bibliographiques

The Institute has attempted to obtain the best original copy available for filming. Features of this copy which may be bibliographically unique, which may alter any of the images in the reproduction, or which may significantly change the usual method of filming, are checked below.

L'Institut a microfilmé le meilleur exemplaire qu'il lui a été possible de se procurer. Les détails de cet exemplaire qui sont peut-être uniques du point de vue bibliographique, qui peuvent modifier une image reproduite, ou qui peuvent exiger une modification dans la méthode normale de filmage sont indiqués ci-dessous.

- | | |
|--|--|
| <input type="checkbox"/> Coloured covers/
Couverture de couleur | <input type="checkbox"/> Coloured pages/
Pages de couleur |
| <input type="checkbox"/> Covers damaged/
Couverture endommagée | <input checked="" type="checkbox"/> Pages damaged/
Pages endommagées |
| <input type="checkbox"/> Covers restored and/or laminated/
Couverture restaurée et/ou pelliculée | <input type="checkbox"/> Pages restored and/or laminated/
Pages restaurées et/ou pelliculées |
| <input type="checkbox"/> Cover title missing/
Le titre de couverture manque | <input checked="" type="checkbox"/> Pages discoloured, stained or foxed/
Pages décolorées, tachetées ou piquées |
| <input type="checkbox"/> Coloured maps/
Cartes géographiques en couleur | <input type="checkbox"/> Pages detached/
Pages détachées |
| <input type="checkbox"/> Coloured ink (i.e. other than blue or black)/
Encre de couleur (i.e. autre que bleue ou noire) | <input checked="" type="checkbox"/> Showthrough/
Transparence |
| <input type="checkbox"/> Coloured plates and/or illustrations/
Planches et/ou illustrations en couleur | <input type="checkbox"/> Quality of print varies/
Qualité inégale de l'impression |
| <input type="checkbox"/> Bound with other material/
Relié avec d'autres documents | <input type="checkbox"/> Includes supplementary material/
Comprend du matériel supplémentaire |
| <input type="checkbox"/> Tight binding may cause shadows or distortion
along interior margin/
La reliure serrée peut causer de l'ombre ou de la
distorsion le long de la marge intérieure | <input type="checkbox"/> Only edition available/
Seule édition disponible |
| <input type="checkbox"/> Blank leaves added during restoration may
appear within the text. Whenever possible, these
have been omitted from filming/
Il se peut que certaines pages blanches ajoutées
lors d'une restauration apparaissent dans le texte,
mais, lorsque cela était possible, ces pages n'ont
pas été filmées. | <input type="checkbox"/> Pages wholly or partially obscured by errata
slips, tissues, etc., have been refilmed to
ensure the best possible image/
Les pages totalement ou partiellement
obscurcies par un feuillet d'errata, une pelure,
etc., ont été filmées à nouveau de façon à
obtenir la meilleure image possible. |
| <input checked="" type="checkbox"/> Additional comments: /
Commentaires supplémentaires: | Printed ephemera 1 sheet (verso blank) |

This item is filmed at the reduction ratio checked below/
Ce document est filmé au taux de réduction indiqué ci-dessous.

10X	12X	14X	16X	18X	20X	22X	24X	26X	28X	30X	32X
										/	

The copy filmed here has been reproduced thanks to the generosity of:

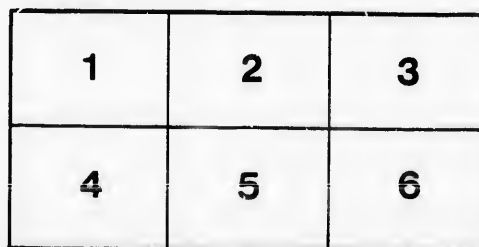
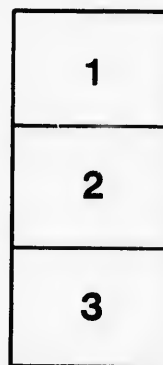
McLennan Library
McGill University
Montreal

The images appearing here are the best quality possible considering the condition and legibility of the original copy and in keeping with the filming contract specifications.

Original copies in printed paper covers are filmed beginning with the front cover and ending on the last page with a printed or illustrated impression, or the back cover when appropriate. All other original copies are filmed beginning on the first page with a printed or illustrated impression, and ending on the last page with a printed or illustrated impression.

The last recorded frame on each microfiche shell contain the symbol \rightarrow (meaning "CONTINUED"), or the symbol ∇ (meaning "END"), whichever applies.

Maps, plates, charts, etc., may be filmed at different reduction ratios. Those too large to be entirely included in one exposure are filmed beginning in the upper left hand corner, left to right and top to bottom, as many frames as required. The following diagrams illustrate the method:



L'exemplaire filmé fut reproduit grâce à la générosité de:

McLennan Library
McGill University
Montreal

Les images suivantes ont été reproduites avec le plus grand soin, compte tenu de la condition et de la netteté de l'exemplaire filmé, et en conformité avec les conditions du contrat de filmage.

Les exemplaires originaux dont la couverture en papier est imprimée sont filmés en commençant par le premier plat et en terminant soit par la dernière page qui comporte une empreinte d'impression ou d'illustration, soit par le second plat, selon le cas. Tous les autres exemplaires originaux sont filmés en commençant par la première page qui comporte une empreinte d'impression ou d'illustration et en terminant par la dernière page qui comporte une telle empreinte.

Un des symboles suivants apparaître sur la dernière image de chaque microfiche, selon le cas: le symbole \rightarrow signifie "A SUIVRE", le symbole ∇ signifie "FIN".

Les cartes, planches, tableaux, etc., peuvent être filmés à des taux de réduction différents. Lorsque le document est trop grand pour être reproduit en un seul cliché, il est filmé à partir de l'angle supérieur gauche, de gauche à droite, et de haut en bas, en prenant le nombre d'images nécessaire. Les diagrammes suivants illustrent la méthode.

Committee-Chamber, Bishop's Palace, Quebec, 6th. November 1790.

SIR,



I S Excellency LORD DORCHESTER, with the advice of the Council, was pleased, by his Order in Council of the 22d. of July 1788, to order, " That the Clerk of the Courts of Justice should on or before the 1st. day of October then next, file in the Council-Office an Estreat or Account of all Fines, Forfeitures and other dues, Articles of the Casual Revenues of the Crown, at any time within ten years then last past incurred in either of their respective Courts. That all Magistrates, Justices of the Peace and others should make a like Estreat of all such Dues as had accrued by any process before them in Sessions or otherwise. That like Estreats should be made by all Sheriffs, Clerks and other Officers of the Courts of Justice of every kind, of all and every sum of money that had at any time come to their hands, as part of the Royal Revenue. And to the end that it might be known by the report of the several persons officiating as Notaries Public what sums had accrued since they had respectively been in Office, for quints, lods et ventes or other the Seigniorial Rights of the Crown, the said Notaries are commanded to make due Report thereof to the Council-Office within the time aforementioned."

And further to Order, " That every the said respective Officers, Magistrates, Clerks of Court, Sheriffs, Coroners and others having any Public Monies in their hands, should forthwith pay over the same to His Majesty's Receiver-General for the use of the Crown, and that they should continue to do so in all times coming as often as they might receive any part of the Royal Revenue in the course of the execution of their trusts.

" And that the like Estreats, Returns, Accounts and Reports, should be filed in the said Council Office half-yearly, from and after the said first day of October, by every of the Officers aforementioned, under his signature and upon oath, and that a certified copy thereof be at the same time filed in the Office of His Majesty's Receiver-General."

His Lordship's Order aforesaid was published in the Quebec Gazettes of the 31st. July 1788 N^o 1198, and 7th. and 14th. of August following N^o 1199 and 1200.

On the 17th. of May last His Lordship, with the advice of the Council, was pleased to commit to a Committee of His Majesty's Council, of which I am Chairman, " to make inquiry how far the said Order of the 22d. of July 1788 has been complied with by the different Officers as well as Notaries Public, thereby required to furnish Estreats and Reports of the sums accrued to His Majesty in their respective Departments, calling upon such as may be in default for a Justification of their conduct, and reporting the Result."

In Order to enable the Committee to Report to His Lordship upon this Reference, I am directed by them to call upon You for the Reason why the said Order has not been complied with on your part, and I request your answer addressed to JENKIN WILLIAMS, Esquire, Clerk of the Council with all possible dispatch.

I have the Honor to be,

SIR,

Your most obedient humble Servant,

Edw. Barré

J. Williams

