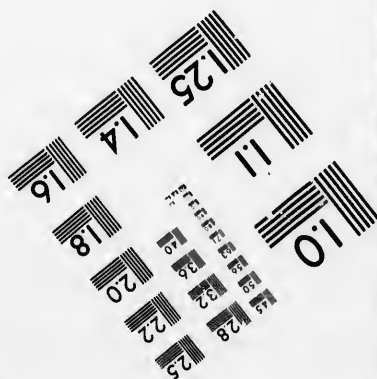
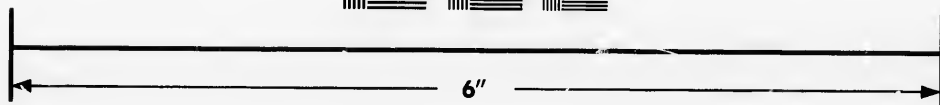
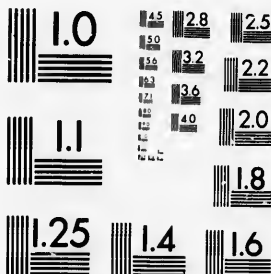


**IMAGE EVALUATION
TEST TARGET (MT-3)**



**Photographic
Sciences
Corporation**

23 WEST MAIN STREET
WEBSTER, N.Y. 14580
(716) 872-4503

15 12.8 25
13 13 22
12 13.2 20
11 13.6 18
10 14 16

**CIHM/ICMH
Microfiche
Series.**

**CIHM/ICMH
Collection de
microfiches.**



Canadian Institute for Historical Microreproductions / Institut canadien de microreproductions historiques

11
10
01
57

© 1986

The copy filmed here has been reproduced thanks to the generosity of:

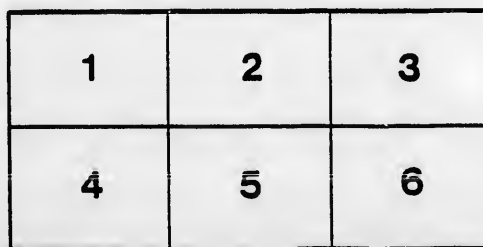
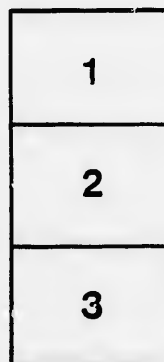
Archives of Ontario
Toronto

The images appearing here are the best quality possible considering the condition and legibility of the original copy and in keeping with the filming contract specifications.

Original copies in printed paper covers are filmed beginning with the front cover and ending on the last page with a printed or illustrated impression, or the back cover when appropriate. All other original copies are filmed beginning on the first page with a printed or illustrated impression, and ending on the last page with a printed or illustrated impression.

The last recorded frame on each microfiche shall contain the symbol \rightarrow (meaning "CONTINUED"), or the symbol ∇ (meaning "END"), whichever applies.

Maps, plates, charts, etc., may be filmed at different reduction ratios. Those too large to be entirely included in one exposure are filmed beginning in the upper left hand corner, left to right and top to bottom, as many frames as required. The following diagrams illustrate the method:



L'exemplaire filmé fut reproduit grâce à la générosité de:

Archives of Ontario
Toronto

Les images suivantes ont été reproduites avec le plus grand soin, compte tenu de la condition et de la netteté de l'exemplaire filmé, et en conformité avec les conditions du contrat de filmage.

Les exemplaires originaux dont la couverture en papier est imprimée sont filmés en commençant par le premier plat et en terminant soit par la dernière page qui comporte une empreinte d'impression ou d'illustration, soit par le second plat, selon le cas. Tous les autres exemplaires originaux sont filmés en commençant par la première page qui comporte une empreinte d'impression ou d'illustration et en terminant par la dernière page qui comporte une telle empreinte.

Un des symboles suivants apparaîtra sur la dernière image de chaque microfiche, selon le cas: le symbole \rightarrow signifie "A SUIVRE", le symbole ∇ signifie "FIN".

Les cartes, planches, tableaux, etc., peuvent être filmés à des taux de réduction différents. Lorsque le document est trop grand pour être reproduit en un seul cliché, il est filmé à partir de l'angle supérieur gauche, de gauche à droite, et de haut en bas, en prenant le nombre d'images nécessaire. Les diagrammes suivants illustrent la méthode.

tails
du
odifier
une
image

errata
to

pelure,
n à

32X

VOTERS' LIST, 1892.



MUNICIPALITY OF SOUTH GOWER

Schedule of Post Offices.

1 Heckston ; 2 South Gower ; 3 Kemptville ; 4 Hallville.

Polling Sub-Division No. 1.—Comprising the 1st, 2nd, 3rd and 4th Concessions of the Township of South Gower, and not including that part of the 2nd and 3rd Concessions of South Gower which was formerly a part of North Gower.

PART 1.—Persons entitled to Vote at both Municipal Elections and Elections to the Legislative Assembly.

No. on Roll	NAME.	JURORS.	LOT.	CON.	DESCRIPTION.	P. O. A.
11	Anderson, Samuel H.	J	5	3 & o p	o & m f	1
12	Anderson, Thomas.	J	p 6	2	t & m f	1
14	Anderson, Thomas B.	J	8	3	t s & m f	1
16	Beggs, John sr.	J	6	1	o & m f	1
17	Beggs, John jr.	J	6	1	f s & m f	1
18	Beggs, Joseph	J	e quarter 1	2	o & m f	1
19	Beggs, Hugh	J	s quarter 1	2	o & m f	1
20	Brown, John S.	J	w half 4	2	o & m f	1
21	Brown, William	J	w half 4	2	f s & m f	1
22	Beach William	J	s p n half 11, 12	2	o & m f	1
23	Beach, John	J	e p 11 and 12	2	t & m f	1
24	Bennett, Samuel	J	n p 10	2	o & m f	1
25	Bennett, William	J	p 10	2 & o p	o & m f	1
26	Bennett, George	J	p 10	2	f s & m f	1
27	Beach, Sandford	J	s p 9	4 & o p	o & m f	2
28	Beach, George	J	s p 9	4	o & m f	2
30	Beach, Benjamin	J	e p 9	4 & o p	o & m f	2
31	Beach, David	J	e p 9	4	f s & m f	2
32	Beach, Frederick	J	e p 9	4	f s & m f	2
33	Beach, Albert B.	J	s p 8	4 & o p	o & m f	2
34	Bennett, Robert	J	s quarter 9	3	o & m f	1
35	Bennett, Robert	J	s quarter 11	3	o & m f	1
40	Boyd, William	J	p 7	2	t & m f	1
42	Bower, Joseph	J	w half 1	4	f s & m f	2
43	Bower, Samuel	J	w half 1	4	f s & m f	2
44	Bower, Andrew	J	w half 1	4	f s & m f	2
45	Bower, David	J	w half 1	4	f s & m f	2
46	Bower, James	J	w half 1	4	f s & m f	2
50	Bennett, Joseph	J	e quarter 8	2	o & m f	1
51	Bennett, John	J	n w p 12	3 & o p	o & m f	2
52	Cowden, Alexander	J	e half 7	1	o & m f	1

POLLING SUB DIVISION NO. 1.

No. on Roll	NAME	JURORS.	LOT.	CON.	DESCRIPTION.	P. O. A.
53	Cowden, Samuel	j	n w quarter 7	1	o and m f	1
54	Cummings, Wm. A.	j	e half 4	2	o and m f	1
55	Cummings, Anderson J.	j	e w p 3	2 & o p	o and m f	1
62	Colburn, John	j	s e quarter 9	3 & o p	o and m f	1
63	Colburn, James	j	n e quarter 11	3	o and m f	2
64	Conley, William	j	n half 8	2	c and m f	1
65	Conley, Walter	j	n half 8	2	f s and m f	1
68	Cummings, William	j	e half 3	4 & o p	o and m f	2
69	Cumming, Allen	j	w half 3	4 & o p	o and m f	2
70	Cummings, Duncan	j	w half 4	4	o and m f	2
71	Carpenter, Alexander	j	s p n half 6	4	o and m f	2
72	Conley, Henry	j	s e half 7	4 & o p	o and m f	2
76	Currie, Archibald	j	e half 9	1	o and m f	1
77	Currie, David	j	w half 10	1	o and m f	1
78	Currie, Thomas W.	j	s p e half 9	2 & o p	o and m f	1
84	Dulmage, James	j	s half 7	3 & o p	o and m f	1
85	Dillabough, Albert	j	n p 11 and 12	2	o and m f	1
90	Eager, Richard	j	e half w half 5	2 & o p	o and m f	1
91	Eager, Thomas	j	s p 5	1 & o p	o and m f	1
100	Gilmore, James	j	e half 1	1	o and m f	1
101	Gilroy, Edward	j	n quarter 3	1 & o p	o and m f	1
102	Gilroy, Edward A	j	w quarter 4	1	f s and m f	1
103	Grant, Malcolm	j	s p 1	3	o and m f	1
104	Grant, John S.	j	s p 1	3	o and m f	1
105	Grant, Albert A.	j	s p 11 and 12	2	o and m f	1
106	Grant, Lorenzo	j	s p 11 and 12	2	f s and m f	1
107	Gregory, Alexander	j	n p 12	4 & o p	o and m f	2
108	Gilroy, Thomas	j	s p 11	4	o and m f	2
36	Greer, John	j	s quarter 11	3	t and m f	1
113	Hunter, Sinclair	j	p s half 8	4	o and m f	2
114	Hazard, Phineas	j	n half 10	4	o and m f	2
122	Hughes, Hugh	j	c p 7	2	o and m f	1
124	Irvine, John	j	s p 11 and 12	2 & o p	o and m f	1
132	Jackson, William	j	p s half 7	4 & o p	o and m f	2
142	Latimore, Thomas	j	n half 2	1	o and m f	1
143	Latimore, William	j	n half 2	1	f s and m t	1
144	Loucks, James	j	s p 4	3	o and m f	1
145	Long, Joseph	j	s p e half 5	1	o and m f	1
146	Long, Thomas	j	s p e half 5	1	f s and m f	1
147	Latimore, Thomas jr.	j	e half 11	1	o and m f	1
161	Latourell, John	j	e half 5	4 & o p	o and m f	2

POLLING SUB-DIVISION NO. 1.

No. on Roll.	NAME.	JURORS	LOT.	CON.	DESCRIPTION.	P. O. A.
162	Latourell, William	j	s w half 5	4	o and m f	2
166	McLennon, John sr.		s w quarter 3	1	o and m f	1
167	McLennon, John jr.		s w quarter 3	1	f s and m f	1
168	Magee, James			2 & o p	o and m f	1
177	McCord, William	j	n w half 8	1	o and m f	1
179	McDowell, Thomas		s p 11 and 12	2	o and m f	1
180	McGee, James	j	c o 9 and 10	2	o and m f	1
181	McGee, Lyman		c p 9 and 10	2	f s and m f	1
182	McDowell, Hugh	j	n p 11	3	o and m f	2
183	McKeen, Robert		p s half 10	4	o and m f	2
184	McKeen, Joseph		p s half 10	4	f s and m f	2
185	McKeen, Robert		p s half 10	4	f s and m f	2
186	McDowell, Thomas	j	p s half 10	4	o and m f	2
187	Mace, Edward		w quarter 9	4	o and m f	2
188	Mace, William		w quarter 9	4	f s and m f	2
189	Mace, Henry	j	p 10	3	o and m f	1
200	McCann, Hugh C.		n p 7	2	o and m f	1
201	McCann, J. A.		n p 7	2	f s and m f	1
202	McKendry, Branford	j	e half 4	4	o and m f	2
203	McGee, Robert		n p 7	4 & o p	o and m f	2
204	McGovern, Richard	j	s p 7	4 & o p	o and m f	2
208	McCord, Samuel		p 7	2	t and m f	1
215	Norton, William H.	j	p 11 and 12	2	o and m f	1
222	Pelton, Elijah		s p 7	4	o and m f	2
223	Pelton, Erastus		n p s half 6	4	o and m f	2
225	Pelton, Haskell	j	n p s half 6	4 & o p	o and m f	2
226	Pitman, Ralph	j	s w quarter 7	1	o and m f	1
227	Pitman, Thomas	j	s e quarter 4	1	o and m f	1
228	Pitman, Wesley	j	s w quarter 4	1	o and m f	1
229	Payne, Sidney	j	s w half 12	3 & o p	o and m f	2
230	Payne, Albert		n p 12	4 & o p	o and m f	2
89	Price, Robert	j	n three-quarter 3	3	t and m f	1
235	Raymond, Richard sr.		w p 12	3	o and m f	2
236	Raymond, Arthur	j	3	1	o and m f	1
237	Raymond, Richard jr.	j	n p 3	1	t and m f	1
238	Raymond, James	j	n p 3	1	t and m f	1
241	Robinson, Wesley	j	c p 7	1	o and m f	1
242	Somerville, William	j	s quarter 1	1	o and m f	1
243	Smith, Patrick	j	w half 2	1	o and m f	1
244	Smith, James W.		e half 2	3 & o p	o and m f	1
245	Smith, Peter	j	s w quarter 2	3	o and m f	1
255	Spencer, Gideon		n p s half 11	4	o s and m f	2
262	Shaver, Gordon		n p 6	2	o and m f	1
263	Shaver, James W.	j	s p 6	3	o and m f	1
265	Shiach, David		w half 2	4	o and m f	2

POLLING SUB-DIVISION NO. 1.

No. on Roll.	NAME.	JURORS	LOT.	CON.	DESCRIPTION.	P. O. A.
266	Shiach, John	j	w half 2	4	o s and m f	2
267	Shaver, Nicholas	j	n p 9	2 & o	p o and m f	1
277	Tobin, James		p 6	4	o and m f	2
279	Workman, W. J.	j	w quarter 1	1	e and m f	1

PART. 3—Persons entitled to Vote at Municipal Elections only.

13	Anderson, Elizabeth (w.)			8	3	o	1
60	Cameron Mary (widow)		p 6		2	o	1
75	Currie, Elizabeth (w'do.)		s p 7		2 & o	p o	1
88	Eager, George		n three-quarters	3	3	o	3
92	Eager, William		p s half 7		2 & o	p o	1
93	Eager, Daniel		s p 6		2 & o	p o	1
40	McElroy, J. Rev.		p 7		2	o	1
178	McIntyre, Jane (spinster)		n half 8		1 & o	p o	1
234	Quackenbush, Cyrus		w p 11		1	o	1
254	Spencer, Sarah (widow)		n half 11		4 & o	p o	
278	Vanallen, Samuel		e p 1		4	o	

PART. 3—Persons entitled to Vote at Elections to the Legislative Assembly only.—NONE.

POLLING SUB DIVISION No 2.

Polling Sub-Division No. 2.—Comprising the 5th, 6th, 7th, 8th and 9th Concessions of the Townships of South Gower and also that part of the 2nd and 3rd Concessions of South Gower which was formerly a part of North Gower.

PART I.—Persons entitled to Vote at both Municipal Elections and Elections to the Legislative Assembly.

No. on Roll.	NAME.	JUROES	LOT.	CON.	DESCRIPTION.	P. O. A.
1	Arcaw, Christmas	j	n w half 6	8	o and m f	3
2	Arcaw, John	j	n w half 6	8	o s and m f	3
3	Arcaw, Frank	j	e half 7	8	t and m f	3
4	Arcaw, Henry	j	s e half 6	8	o and m f	3
5	Arcaw, Fred	j	e half 5	8	o and m f	3
6	Arcaw, Francis	j	s w half 3	8	o and m f	3
7	Arcaw, Lewis	j	s e half 3	8	o and m f	3
8	Arcaw, Leon jr.	j	n e quarter 1	8	o and m f	3
9	Arcaw, Leon sr.	j	s w half 1	8	o and m f	3
10	Arcaw, Peter	j	s e quarter 1	8	o and m f	3
15	Anderson, Samuel	j	s p 13	6	o and m f	3
29	Beach, Sidney	j	s half 9	5	o and m f	2
38	Buchanan, Wm. H	j	13	5	o and m f	3
57	Cullen, James	j	41	3	o and m f	3
58	Cullen, Edward	j	41	3	f s and m f	3
59	Code, George	j	10, 11 and 12	9	o and m f	3
61	Cusick, James	j	e half 12	8	o and m f	3
66	Clark, Joseph	j	4	5	o and m f	2
67	Coleman, John	j	s three-quarters	25 & o p	o and m f	2
73	Conlon, John	j	e half 7	6	t and m f	3
80	Coleman, John	j	s half 8	6 & o p	o and m f	3
81	Coleman, Earnest	j	s half 6	6	f s and m f	3
82	Coleman, John W.	j	s half 8	6	f s and m f	3
83	Carter, S.	j	s p 7	5	o and m f	2
87	Drew, James J.	j	n e quarter 9	7	o and m f	3
94	Floyd, Thomas	j	s p 9	8	o and m f	3
95	Fintley, Martin	j	e half 4	8	o and m f	3
96	Flin, John	j	n w p 43	3	o and m f	3
97	Flin, James	j	e p 43	3 & o p	o and m f	3
98	Flin, Thomas R.	j	s p 43	3	o and m f	3
99	Gibson, Alexander	j	p 35	2	o and m f	3
109	Green, Richard	j	e p 42	3	o and m f	3
110	Green, Martin	j	n half 3	6	t and m f	3
120	Hulbert, Ransom	j	p w 6	5	o and m f	2
121	Hulbert, Parnell	j	s e quarter 9	7	o and m f	3
123	Hulbert, Erastus	j	n p 7	7	o and m f	3

No. on Roll.	NAME.	JURORS.	LOT.	CON.	DESCRIPTION.	P. O. A.
125	Jackson, Allen	j	s w quarter 9	6	o and m f	3
126	Johnston, Nicholas	j	e three-quarters	46	o and m f	3
127	Johnston, William	j	w quarter 4	6 & o p	o and m f	3
128	Johnston, Edwin	j	5	7	o and m f	3
129	Jarbo, Joseph sr.	j	w half 4	8	o and m f	3
130	Jarbo, Joseph jr.	j	w half 4	8	f s and m f	3
131	Jarbo, Lewis	j	w half 4	8	f s and m f	3
133	Kennedy, Thomas	j	p 10	7	t and m f	3
134	Kite, James	j	e p 42	3	o and m f	3
135	Kite, Thomas	j	e p 42	3	o and m f	3
149	Longway, Joseph	j	n w quarter 11	7	o and m f	3
150	Longway, Francis	j	s w quarter 11	7 & o p	o and m f	3
151	Longway, John	j	n w quarter 12	7	o and m f	3
152	Longway, Nelson,	j	n w quarter 12	7	f s and m t	3
153	Leach, George	j	p 43	2	o and m f	3
154	Leach Joshua	j	p 43	2	f s and m f	3
155	Leach, W. J.	j	p 43	2	f s and m f	3
156	Lavere, Ira	j	quarter 8	9 & o p	o and m f	3
157	Limmen, David	j	quarter 9	9	o and m f	3
158	Little, James	j	quarter 9	9	o and m f	3
159	Little, Mathew	j	n e p 10	8 & o p	o and m f	3
160	Little, Thomas	j	w half 11	8	o and m f	3
164	Logan, William J.	j	p w half 1	7 & o p	o and m f	3
169	Mackey, James sr.	j	s quarter 12	7	o and m f	3
170	Mackey, James jr.	j	s quarter 12	7	f s and m f	3
171	Mackey, Thomas	j	w quarter 12	7	f s and m f	3
172	McGahey, Patrick	j	s e p 38	2	o and m f	3
173	McGahey, Timothy	j	s e p 38	2	f s and m f	3
174	McGahey, Patrick	j	39	2	o and m f	3
175	Mussell, Solomon	j	36 and 37	2	o and m f	3
176	McKim, Sidney	j	p 14	8	o and m f	3
177	McKim, James	j	13	8	o and m f	3
190	McElroy, George	j	e haf 3	7	o and m f	3
191	McElroy, James.	j	e haf 3	7	f s and m f	3
192	McLaughlin, Wm. sr.	j	2	7	o and m f	3
193	Magee, William	j	s p 10	6	o and m f	3
194	Mackey, John	j	e half 11	6 & o p	o and m f	3
195	Mackey, Thomas J.	j	w half 10	6	f s and m f	3
196	Mundle, Thomas	j	s w p 11	6 & o j	o and m f	3
197	Mundle, Molson	j	w half 12	6	o and m f	3
198	Mackey, Edmund	j	s e quarter 12	6 & o p	o and m f	3
199	McMullen, Thomas	j	s w quarter 9	7	o and m f	3
209	McLean, John	j	w three-quarters 4	7	o and m f	3
210	Miller, David	j	e quarter 4	7	o and m f	3
211	McQuay, Thomas	j	s half 10	8	o and m f	3
216	O'Neil, Charles sr.	j	e half 11	5	o and m f	3
217	O'Neil, Peter	j	e half 11	5	f s and m f	3

POLLING SUB-DIVISION NO. 2.

No. on Roll.	NAME.	JUROS.	LOT.	CON.	DESCRIPTION.	P. O. A.
218	O' Neil, Charles jr.		e half 11	5	f s and m f	3
219	Prosser, William		n w p 8	5	o and m f	2
220	Prosser, George		p 13	6	o and m f	3
232	Percival, Samuel	j	n p 11	8	o and m f	3
239	Rath, James	j	s quarter 14	8	o and m f	3
240	Rath, John	j	s o p 14	8	o and m f	3
246	Santimaw, Dermiah	j	w half 7	8	o and m f	3
247	Santimaw, John		w half 7	8	f s and m f	3
248	Santimaw, Leon		w half 7	8	f s and m f	3
249	Sabraw Levins	j	e quarter 3	9	o and m f	3
251	Santimaw, Andrew		n w p 10	8	o and m f	3
252	Santimaw, Dennis		n w p 10	8	o and m f	3
253	Sparks, Isaiah	j	s half 12	8	o and m f	3
257	Story, Alexander	j	n p 9	5	o and m f	2
258	Smith, John P.	j	n w p 1	5 & o p	o and m f	4
259	Smith, Livingston	j	1	6	o and m f	4
260	Smith, Gideon	j	s half 1	6	t and m f	3
261	Stewart, Robert	j	n half 8	6 & o p	o and m f	3
268	Sheridan, John	j	s half 40	2 & o p	o and m f	3
269	Shie'ds, John	j	2	8	o and m f	3
279	Sabraw, Andrew	j	c p 41	2	o and m f	3
272	Sabraw, James	j	n p 41	2	f s and m f	3
273	Sabraw, William E.	j	n p 41	2	f s and m f	3
274	Sabraw, Moses	j	n p 41	2	f s and m f	3
275	Sabraw, John	j	n p 42	2	o and m f	3
67	Tobin, William		o half 5	5	o and m f	2
276	Taylor, James	j	8	7	o and m f	3
280	Wilson, Thomas	j	w half 39 and 40	3	o and m f	3
281	Wilson, Alexander	j	p 40	3	o and m f	3
282	Wilson, Ambrose	j	p 40	3	f s and m f	3
283	Whaley, John	j	s p 7	7 & o p	o and m f	3
284	Whitney, John	j	s quarter 12	5	o and m f	3
285	Whitney, Robert	j	s quarter 12	5	f s and m f	3
286	Wiley, Alexander	j	4, 5, 6 and 7	9	o and m f	3
288	Wilson, Thomas H.	j	w half 39 and 40	3	f s and m f	3
74	Watson, Henry		e half 7	6	o and m f	3

PART. 2 — Persons entitled to Vote at Municipal Elections only.

No. on Roll	NAME	JURORS.	LOT.	CON.	DESCRIPTION.	P. O. A.
37	Anderson, W. H.		10	5	o	3
37	Bolton, Hugh		10	5	o	3
39	Buchanan, Angus		w p 11	5	& o p	3
47	Bennett, Ellen (widow)		n quarter 14	7	o	3
48	Barns, Theresa		w half 5	8	o	3
49	Bower, Mary A. (widow)		s e p 37	2	o	3
97	Beggs, John		s p 42	2	o	3
79	Clothier, Ambrose		s half 3	6	o	3
86	Dormer, Jane (widow)		w half 8	8	o	3
111	Houston, Amos		n p 7	7	o	3
112	Henry, Matilda, (widow)		s half 13 and 14	7	o	3
115	Hyndman, Joseph		2	6	o	4
116	Hyndman, Alexander		2	6	f s.	4
117	Hyndman, David		n w p 7	5	o	3
118	Hulbert, Erastus		n half 9	5	& o p	3
119	Hays, Charles		p w 5 and 6	5	o	3
136	Kennedy, John		e p w half 5 and 6	5	o	3
137	Kennedy, William		e p w half 5 and 6	5	o	3
138	Kennedy, David		e p w half 5 and 6	5	o	3
139	Kennedy, Nathaniel		e p w half 5 and 6	5	o	3
140	Kirkwood, Alwilda (sp'r)		w p 5	6	& o p	3
163	Lamping, Vincent		w half 11	7	o	3
165	Logan, James		p w half 1	7	o	3
205	McDonald, John		s p 10	7	o	3
110	McLaughlin, William		n half 3	6	o	3
206	McDonald, James		p s 10	7	f s.	3
207	Maley, George		n e 4 9	6	o	3
212	McGregor, James		n w p 11	6	o	3
214	Murphy, Ann (widow)		e half 8	8	o	3
231	Parkinson, Robert		n half 13	7	o	3
233	Plunket, Rebecca		n p 1	9	o	3
250	Schwertfeger, Nancy (w)		s half e p 37	2	o	3
256	Story, Margaret (widow)		s p 7	5	& o p	2
264	Smith, James R.		3	5	o	2
213	Sanders, James		w p 11	6	o	3
271	Sabraw, Amelia		n p 41	2	o	3
287	Watson, Edward R.		s p 7	7	o	3

PART. 2 --Persons entitled to Vote at Municipal Elections only.

No. on Roll	NAME	JUROS.	LOT.	CON.	DESCRIPTION.	P. O. A.
37	Anderson, W. H.		10	5	o	3
37	Bolton, Hugh		10	5	o	3
39	Buchanan, Angus		w p 11	5 & o p	o	3
47	Bennett, Ellen (widow)		n quarter 14	7	o	3
48	Barns, Theresa		w half 5	8	o	3
49	Bower, Mary A. (widow)		s e p 37	2	o	3
97	Beags, John		s p 42	2	o	3
79	Clothier, Ambruse		s half 3	6	o	3
86	Dormer, Jane (widow)		w half 8	8	o	3
111	Houston, Amos		n p 7	7	o	3
112	Henry, Matilda, (widow)		s half 13 and 14	7	o	3
115	Hyndman, Joseph		2	6	o	4
116	Hyndman, Alexander		2	6	f s,	4
117	Hyndman, David		n w p 7	5	o	3
118	Hulbert, Erastus		n half 9	5 & o p	o	3
119	Hays, Charles		p w 5 and 6	5	o	3
136	Kennedy, John		e p w half 5 and 6	5	o	3
137	Kennedy, William		e p w half 5 and 6	5	o	3
138	Kennedy, David		e p w half 5 and 6	5	o	3
139	Kennedy, Nathaniel		e p w half 5 and 6	5	o	3
140	Kirkwood, Alwilda (sp'r)		w p 5	6 & o p	o	3
165	Lamping, Vincent		w half 11	7	o	3
165	Logan, James		p w half 1	7	o	3
205	McDonald, John		s p 10	7	o	3
110	McLaughlin, William		n half 3	6	o	3
206	McDonald, James		p s 10	7	f s,	3
207	Maiey, George		n e 9	6	o	3
212	McGregor, James		n w p 11	6	o	3
214	Murphy, Ann (widow)		e half 8	8	o	3
231	Parkinson, Robert		n half 13	7	o	3
233	Plunket, Rebecca		n p 1	9	o	3
250	Schwertfeger, Nancy (w)		s half e p 37	2	o	3
256	Story, Margaret (widow)		s p 7	5 & o p	o	2
264	Smith, James R.		3	5	o	2
213	Sanders, James		w p 11	5	o	3
271	Sabraw, Amelia		n p 41	2	o	3
287	Watson, Edward R.		s p 7	7	o	3

PART. 3.—Persons entitled to Vote at Elections to the Legislative Assembly only.

No. on Roll.	NAME.	JURORS.	LOT.	CON.	DESCRIPTION.	P. O. A.
141	Kirkwood, William J.	7		6	m f	3
221	Prosser, Samuel	p 13		6	m f	3

The aggregate number of names of persons upon the foregoing list, qualified to serve as jurors, is One Hundred and Forty-two (142.)

ELIJAH PELTON, Clerk of said Municipality.

I, Elijah Pelton, Clerk of the municipality of the township of South Gower, in the County of Grenville, do hereby certify that parts one and three of the within list constitute a correct list for the year 1892, of all persons appearing by the last Revised Assessment Roll of the said Municipality, to be entitled to vote at Elections for Members of the Legislative Assembly; and that parts one and two constitute a correct list for said year of all persons appearing by the said roll to be entitled to vote at Municipal Elections in said Municipality; and I hereby call upon all electors to examine the said list, and if any omissions or other errors are perceived therein, to take immediate proceedings to have the said errors corrected according to law.

ELIJAH PELTON, Clerk of said Municipality.

Dated this 20th day of July, 1892.

