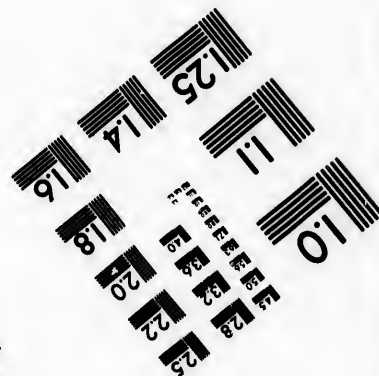
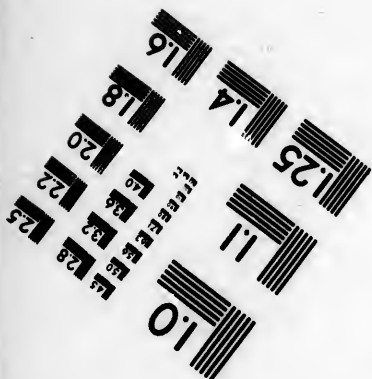
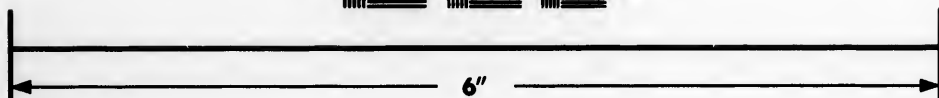
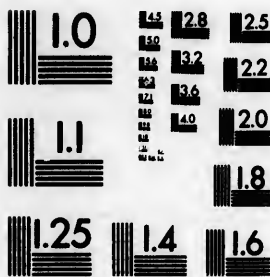


**IMAGE EVALUATION
TEST TARGET (MT-3)**



**Photographic
Sciences
Corporation**

23 WEST MAIN STREET
WEBSTER, N.Y. 14580
(716) 872-4503

1.8
1.9
2.0
2.2
2.5
2.8
3.2
3.6
4.0
4.5
5.0
5.6
6.3
7.0
7.9
8.9
10.0
11.2
12.5
14.0
15.6
17.5
19.6
22.0
24.8
28.0
31.5
35.4
39.6
44.1
49.1
54.4
60.0
66.0
72.4
79.2
86.4
93.9
101.8
110.1
118.8
127.9
137.4
147.3
157.6
168.3
179.4
190.9
202.8
215.1
227.8
240.9
254.4
268.3
282.6
297.3
312.4
327.9
343.8
359.9
376.4
393.3
410.6
428.3
446.4
464.9
483.8
503.1
522.8
542.9
563.4
584.3
605.6
627.3
649.4
671.9
694.8
718.1
741.8
765.9
790.4
815.3
840.6
866.3
892.4
918.9
945.8
973.1
1000.8

**CIHM/ICMH
Microfiche
Series.**

**CIHM/ICMH
Collection de
microfiches.**



Canadian Institute for Historical Microreproductions / Institut canadien de microreproductions historiques

01
02
03
04
05
06
07
08
09
10
11
12
13
14
15
16
17
18
19
20
21
22
23
24
25
26
27
28
29
30
31
32
33
34
35
36
37
38
39
40
41
42
43
44
45
46
47
48
49
50
51
52
53
54
55
56
57
58
59
60
61
62
63
64
65
66
67
68
69
70
71
72
73
74
75
76
77
78
79
80
81
82
83
84
85
86
87
88
89
90
91
92
93
94
95
96
97
98
99
100

© 1985

Technical and Bibliographic Notes/Notes techniques et bibliographiques

The Institute has attempted to obtain the best original copy available for filming. Features of this copy which may be bibliographically unique, which may alter any of the images in the reproduction, or which may significantly change the usual method of filming, are checked below.

L'institut a microfilmé le meilleur exemplaire qu'il lui a été possible de se procurer. Les détails de cet exemplaire qui sont peut-être uniques du point de vue bibliographique, qui peuvent modifier une image reproduite, ou qui peuvent exiger une modification dans la méthode normale de filmage sont indiqués ci-dessous.

- Coloured covers/
Couverture de couleur
- Covers damaged/
Couverture endommagée
- Covers restored and/or laminated/
Couverture restaurée et/ou pelliculée
- Cover title missing/
Le titre de couverture manque
- Coloured maps/
Cartes géographiques en couleur
- Coloured ink (i.e. other than blue or black)/
Encre de couleur (i.e. autre que bleue ou noire)
- Coloured plates and/or illustrations/
Planches et/ou illustrations en couleur
- Bound with other material/
Relié avec d'autres documents
- Tight binding may cause shadows or distortion along interior margin/
La reliure serrée peut causer de l'ombre ou de la distorsion le long de la marge intérieure
- Blank leaves added during restoration may appear within the text. Whenever possible, these have been omitted from filming/
Il se peut que certaines pages blanches ajoutées lors d'une restauration apparaissent dans le texte, mais, lorsque cela était possible, ces pages n'ont pas été filmées.
- Additional comments:/
Commentaires supplémentaires:

- Coloured pages/
Pages de couleur
- Pages damaged/
Pages endommagées
- Pages restored and/or laminated/
Pages restaurées et/ou pelliculées
- Pages discoloured, stained or foxed/
Pages décolorées, tachetées ou piquées
- Pages detached/
Pages détachées
- Showthrough/
Transparence
- Quality of print varies/
Qualité inégale de l'impression
- Includes supplementary material/
Comprend du matériel supplémentaire
- Only edition available/
Seule édition disponible
- Pages wholly or partially obscured by errata slips, tissues, etc., have been refilmed to ensure the best possible image/
Les pages totalement ou partiellement obscurcies par un feuillet d'errata, une pelure, etc., ont été filmées à nouveau de façon à obtenir la meilleure image possible.

This item is filmed at the reduction ratio checked below/
Ce document est filmé au taux de réduction indiqué ci-dessous.

10X	14X	18X	22X	26X	30X
<input type="checkbox"/>	<input type="checkbox"/>	<input type="checkbox"/>	<input checked="" type="checkbox"/>	<input type="checkbox"/>	<input type="checkbox"/>
12X	16X	20X	24X	28X	32X

The to th
The pos
of th
film
Orig
beg
the
sion
othe
first
sion
or il
The sh
TIN
whic
Map
diffe
entia
begi
right
requ
met

The copy filmed here has been reproduced thanks to the generosity of:

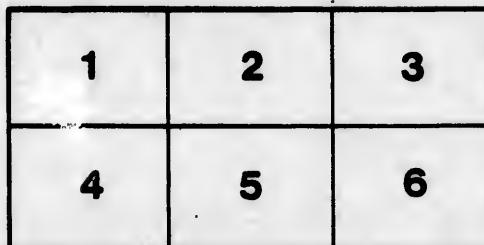
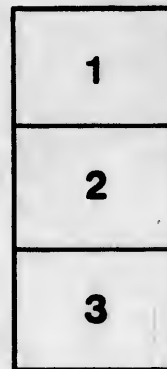
New Brunswick Museum
Saint John

The images appearing here are the best quality possible considering the condition and legibility of the original copy and in keeping with the filming contract specifications.

Original copies in printed paper covers are filmed beginning with the front cover and ending on the last page with a printed or illustrated impression, or the back cover when appropriate. All other original copies are filmed beginning on the first page with a printed or illustrated impression, and ending on the last page with a printed or illustrated impression.

The last recorded frame on each microfiche shell contain the symbol \rightarrow (meaning "CONTINUED"), or the symbol ∇ (meaning "END"), whichever applies.

Maps, plates, charts, etc., may be filmed at different reduction ratios. Those too large to be entirely included in one exposure are filmed beginning in the upper left hand corner, left to right and top to bottom, as many frames as required. The following diagrams illustrate the method:



L'exemplaire filmé fut reproduit grâce à la générosité de:

New Brunswick Museum
Saint John

Les images suivantes ont été reproduites avec le plus grand soin, compte tenu de la condition et de la netteté de l'exemplaire filmé, et en conformité avec les conditions du contrat de filmage.

Les exemplaires originaux dont la couverture en papier est imprimée sont filmés en commençant par le premier plat et en terminant soit par la dernière page qui comporte une empreinte d'impression ou d'illustration, soit par le second plat, selon le cas. Tous les autres exemplaires originaux sont filmés en commençant par la première page qui comporte une empreinte d'impression ou d'illustration et en terminant par la dernière page qui comporte une telle empreinte.

Un des symboles suivants apparaîtra sur la dernière image de chaque microfiche, selon le cas: le symbole \rightarrow signifie "A SUIVRE", le symbole ∇ signifie "FIN".

Les cartes, planches, tableaux, etc., peuvent être filmés à des taux de réduction différents. Lorsque le document est trop grand pour être reproduit en un seul cliché, il est filmé à partir de l'angle supérieur gauche, de gauche à droite, et de haut en bas, en prenant le nombre d'images nécessaire. Les diagrammes suivants illustrent la méthode.

étails
du
modifier
une
image

errata
to

pelure,
n à



32X

Th

I.
Com
Ath
ciat
and
and
in g

I
Ori
rul
ber
by
for

The Fredericton Athenæum,

INSTITUTED APRIL 23, 1847.

Patron.

HIS EXCELLENCY THE LIEUT. GOVERNOR
SIR W. M. G. COLEBROOKE, K. H.

President.

THE HONORABLE N. PARKER.

Vice-Presidents.

HONORABLE W. B. KINNEAR,
HONORABLE JUDGE CARTER,
The REV. J. M. BROOKE,
L. A. WILMOT, Esq., M. P. P.

Secretary & Treasurer.

J. ROBB, Esq., M. D.

LAWS OF THE SOCIETY.

I. The Society shall consist of Subscribing, Honorary and Corresponding Members, united under the name of the Fredericton Athenæum and New Brunswick Literary and Scientific Association, and shall have for its object the promotion of Literature and Science, more particularly as applicable to the circumstances and conditions of this Province, and the North American Colonies in general.

II. The ordinary business of the Society shall consist in reading Original Papers conformable to the provisions of the preceding rule, to be followed by a discussion of the same among the Members generally; after which it shall be competent for any Member, by and with the consent of the President for the evening, to bring forward an *extempore* subject or communication, the duration of

the discussion of which shall be determined from the Chair ; and the President shall always prevent the introduction of any matter repugnant to the Spirit of Christianity, and all Religious or Political controversy in papers or discussions before the Society.

All written Communications which shall be laid before the Society shall become part of its property.

III. For the first twelvemonth the number of Subscribing Members shall not exceed thirty, being contributors of one pound *per annum*, payable in advance, and no Member whose subscription is in arrear shall be allowed to vote at any of the Meetings.

Vacancies shall be filled up from Candidates who must be proposed in writing by two Members of the Society at one Meeting, and balloted for at the succeeding one ; four black balls to exclude from admission.

IV. Corresponding Members are admissible in the same manner as Subscribing Members, and Communications shall be solicited from them.

Honorary Members are also to be proposed in the same manner as others, and to be elected by the unanimous votes of the Members present.

V. Nine Subscribing Members shall be necessary to form a Meeting of the Society.

VI. Meetings shall be held on the third Monday of every Month throughout the year, at King's College, (provided leave can be obtained for that purpose,) at 7 P. M.

VII. The Officers of the Society shall consist of a President, four Vice Presidents, (the senior of whom present shall take the Chair in the absence of the President,) and a Secretary and Treasurer, who shall keep the Minutes of the Society's proceedings, and duly notify every Member of the times of meeting, and of the business then to be discussed, so far as it may be known to him ; as Treasurer he shall also receive and pay all monies on behalf of the Society, and be responsible for the same.

The above Officers shall be elected annually by ballot, and shall constitute a Standing Committee, with power to convene extraordinary meetings of the Society.

No Member shall be eligible to the Office of President for two years in succession.

VII
ruary,
the pa
the So
elected
the en

IX.
for the
Societ

X.
with t
than s
regard
for one


of the
deposi

Frec

VIII. At the Annual Meeting on the third Monday in February, after a Discourse by the President upon the proceedings of the past year, the Accounts of the Receipts and Expenditures of the Society shall be audited, Subscriptions paid, new Officers elected, and arrangements made for the reading of Papers for the ensuing year.

IX. His Excellency the Lieutenant Governor of the Province for the time being, shall be requested to be the Patron of the Society.

X. None of the above Laws shall be rescinded or altered except with the assent of three fourths of a Meeting at which not less than sixteen Members are present, and notice of any motion regarding the same, or of any new Law, must lie upon the Table for one Meeting before the subject can be entertained or discussed.

 *All parties who may be possessed of materials illustrative of the History of the Provinces, are most respectfully solicited to deposit them with this Society.*

Fredericton, May 1, 1847.

