

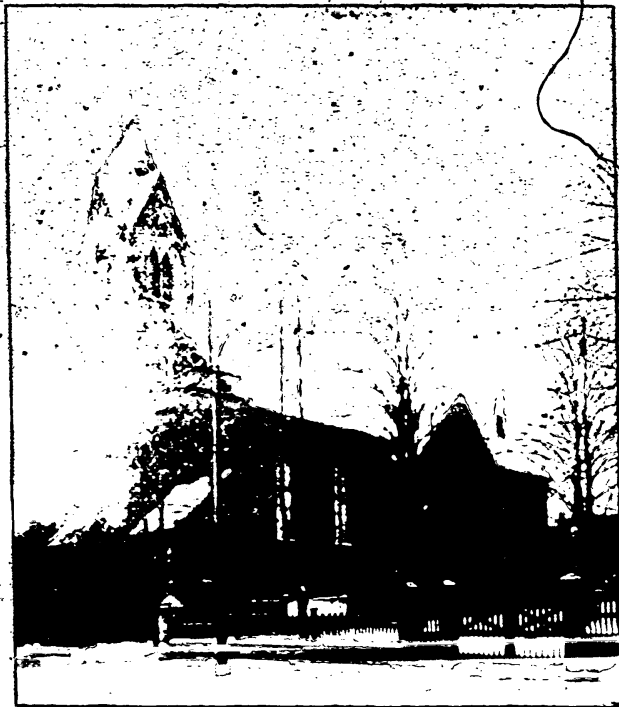
Take with you and keep for reference at home.

Our Calendar.

3.

APRIL 15, 1900.

No. 15



THE NORTH BAPTIST CHURCH.

GOTTINGEN STREET, HALIFAX, N. S.

REV. Z. L. FASH, M. A., Pastor,

RESIDENCE, 31 COMPTON AVE.

THIS IS THE PEOPLE'S CHURCH HOME.

A Hearty Welcome For Everyone. Come Again.

For the Week Beginning April 15, 1900.

Daily Bible Readings.

MON.—Josh. 9. TUES.—Josh. 10: 1-15. WED.—Josh. 10: 16-43. THU—
—Josh. 11. FRI.—Josh. 12. SAT.—Josh. 13. SUN.—Lk. 7: 1-10.

Sunday Services.

- 10.30 A. M.—Morning Prayer Meeting. Every Sunday Morning.
11 A. M.—Public Worship, with Sermon by the Pastor.
Hymns: 23, 103, 192.
2.45 P. M.—S. School Lesson.—“The Daughter of Jairus Raised.”
5: 22-24, 35-43. The Pastor teaches the Men's Class. All men
invited.
2.45 P. M.—Sunday School at Bloomfield St. Mission
7 P. M.—Prayer and Praise Service at Bloomfield St. Mission.
7 P. M.—Public Worship, with Sermon, by the Pastor.
Hymns: 206, 192, 203.
Baptism at beginning of Service.
AFTER MEETING in vestry at close of evening praying service.
-

Meetings for the Week.

- 7.45 P. M. MONDAY—B. Y. P. U. Service. “Serving God Joyously”
Matt. 22: 1-14.
8 P. M. TUESDAY—Sewing Circle at the residence of Mrs. H. Fulton,
Edward Street.
WEDNESDAY, 7.15 P. M.—Deacon's Meeting. Candidates for Baptism
meet the Pastor and Deacons.
7.45 P. M. WEDNESDAY—Prayer and Praise Service.
7.45 P. M. TUESDAY and THURSDAY—EVANGELISTIC SERVICES
BLOOMFIELD ST. MISSION.

in. Strangers and new comers feel at home with us.

00.

Notes

"Chime solemn bells of Easter,
The shadows flee away,
And all the earth is smiling,
In the glory of the day."

FRU
-10.

The Missionary Meeting this month was one of the best we have had. May Keirstead gave a most instructive paper, on "Our Bloomfield Mission." The special music was much enjoyed. Rev. P. Whytecock, of "Regions Beyond Missions," whose visit we all enjoyed very much, gave an interesting address on the "Congo." The Missionary Committee of our Y. P. U. know how to give us a good meeting. Look out for the next one.

11.

Do you read the "Messenger and Visitor," our denominational paper? If not, you ought to become a subscriber. The Rev. J. W. Manning gives some pertinent suggestions in the issue March 28th, regarding the work of young people to world-wide evangelization. It applies to young and old. Read carefully: "There is on the field embraced in our mission a total population of 2,000,000 in nearly 5,000 villages and towns, and covering an area of nearly 5,500 square miles. The forces at work on this field are eight male missionaries with their wives, and six single ladies. Of these eight mission families, two of them and the wife of another are at present on furlough; or will be in a few weeks. Besides these, there are about five native helpers; these include colporteurs and Bible-women as well as preachers and teachers. It surely is not pertinent to ask the question—What are these among so many? Will the Master rebuke us for asking it? There is no lack of faith in Him. We know that He can save with many or with few. He is able to save to the uttermost. God be praised in the display.

Applications for Sittings should be made to Deacon Jas McPherson. The seats are given, not rented. Each holder of a sitting is expected to be a contributor.

THIS CHURCH IS SUPPORTED by the voluntary contributions of the people. It is to say, every member of this church shall voluntarily subscribe towards the expenses of the church whatever sum it is in their power to give, and shall support the Financial Secretary, and from him receive envelopes for that purpose.

All bills or accounts are to be sent to A. E. Soule, 119 Robie St. All monies contributed, donated or raised by and for the church, are to be handed to N. L. Donald, Fin. Sec'y.

CONVENTION FUND offering the second Sunday of each month. W. M. A. S. offering the third Sunday of each quarter beginning with August.

Families having cases of sickness or distress will please send word at once to the pastor, or one of the Deacons. You are urged to use the information cards in press. If you are not a regular member of some other city congregation, you are cordially invited to come with us and find a permanent home.

"Seek ye first the Kingdom of God."—Matt. 6: 33.

Organization..

Pastor—G. L. FASH.

Deacons—J. C. DUMARESQ., JAS. ROSS, W. T. HARRIS,
W. W. PICKINGS, JAS. MCPHERSON, JOHN BENTLEY

Clerk—GEO. A. McDONALD.

Assistant Clerk—F. GAETZ.

Treasurer—W. T. HARRIS.

Trustees—W. T. HARRIS, GEO. A. McDONALD, W. W. PICKINGS, G.
FIELDING, W. H. HAMILTON.

Chorister—W. T. HARRIS.

Organist—MRS. GEO. BURGON

Chairmen of Standing Committees.

Finance—A. E. Soulis.

Taking Sunday Offerings—J. C. Dumaresq.

Ushers—J. F. L. Parsons, P. O. Soulis.

Peace—J. McPherson.

District Committee—Geo. A. McDonald.

Bloomfield Street Mission—J. A. Thompson.

Visiting and Sick—Mrs. Z. L. Fash.

Convention Fund—W. J. Gates.

Organ Fund—C. T. Burns.

Mortgage Fund—A. E. Soulis.

Communion Fund—J. C. Dumaresq.

Social—Jas. McPherson.

Auditor—C. R. Hoben.

Auxiliary Organizations.

Sabbath School—Superintendent, A. C. LAYTON.

Primary Dept. Superintendent, Geo. A. McDonald.

Home Dept. Superintendent, C. R. Hoben.

Mission Band Committee—Chairman, A. C. Layton.

White Ribbon Band—Superintendent, W. J. Gates.

Women's Missionary Aid Society—Mrs. Jas. McPherson, President.

Baptist Young People's Union—S. P. Dumaresq, President.

Junior B. Y. P. U.—Supt., G. A. McDonald. Pres., Clinton Proctor.

Session—Lewis Bourne, 99 Maynard Street.