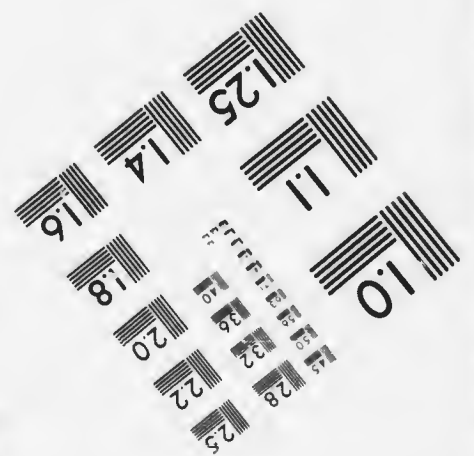
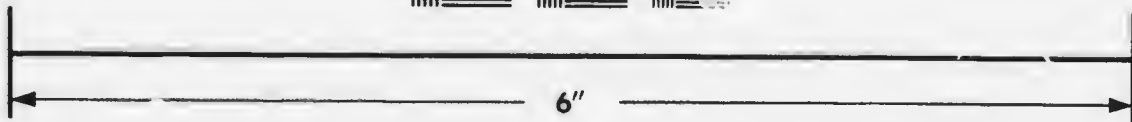
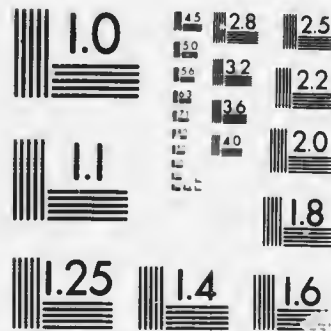


**IMAGE EVALUATION
TEST TARGET (MT-3)**



**Photographic
Sciences
Corporation**

23 WEST MAIN STREET
WEBSTER, N.Y. 14580
(716) 872-4503

25
**CIHM/ICMH
Microfiche
Series.**

**CIHM/ICMH
Collection de
microfiches.**



Canadian Institute for Historical Microreproductions / Institut canadien de microreproductions historiques

© 1987

Technical and Bibliographic Notes/Notes techniques et bibliographiques

The Institute has attempted to obtain the best original copy available for filming. Features of this copy which may be bibliographically unique, which may alter any of the images in the reproduction, or which may significantly change the usual method of filming, are checked below.

L'Institut a microfilmé le meilleur exemplaire qu'il lui a été possible de se procurer. Les détails de cet exemplaire qui sont peut-être uniques du point de vue bibliographique, qui peuvent modifier une image reproduite, ou qui peuvent exiger une modification dans la méthode normale de filmage sont indiqués ci-dessous.

- | | |
|--|--|
| <input type="checkbox"/> Coloured covers/
Couverture de couleur | <input type="checkbox"/> Coloured pages/
Pages de couleur |
| <input type="checkbox"/> Covers damaged/
Couverture endommagée | <input type="checkbox"/> Pages damaged/
Pages endommagées |
| <input type="checkbox"/> Covers restored and/or laminated/
Couverture restaurée et/ou pelliculée | <input type="checkbox"/> Pages restored and/or laminated/
Pages restaurées et/ou pelliculées |
| <input type="checkbox"/> Cover title missing/
Le titre de couverture manque | <input checked="" type="checkbox"/> Pages discoloured, stained or foxed/
Pages décolorées, tachetées ou piquées |
| <input type="checkbox"/> Coloured maps/
Cartes géographiques en couleur | <input type="checkbox"/> Pages detached/
Pages détachées |
| <input type="checkbox"/> Coloured ink (i.e. other than blue or black)/
Encre de couleur (i.e. autre que bleue ou noire) | <input checked="" type="checkbox"/> Showthrough/
Transparence |
| <input type="checkbox"/> Coloured plates and/or illustrations/
Planches et/ou illustrations en couleur | <input type="checkbox"/> Quality of print varies/
Qualité inégale de l'impression |
| <input type="checkbox"/> Bound with other material/
Relié avec d'autres documents | <input type="checkbox"/> Includes supplementary material/
Comprend du matériel supplémentaire |
| <input type="checkbox"/> Tight binding may cause shadows or distortion
along interior margin/
La reliure serrée peut causer de l'ombre ou de la
distorsion le long de la marge intérieure | <input type="checkbox"/> Only edition available/
Seule édition disponible |
| <input type="checkbox"/> Blank leaves added during restoration may
appear within the text. Whenever possible, these
have been omitted from filming/
Il se peut que certaines pages blanches ajoutées
lors d'une restauration apparaissent dans le texte,
mais, lorsque cela était possible, ces pages n'ont
pas été filmées. | <input type="checkbox"/> Pages wholly or partially obscured by errata
slips, tissues, etc., have been refilmed to
ensure the best possible image/
Les pages totalement ou partiellement
obscurcies par un feuillet d'errata, une pelure,
etc., ont été filmées à nouveau de façon à
obtenir la meilleure image possible. |
- Additional comments: / [Printed ephemera] 1 sheet (verso blank)
Commentaires supplémentaires:

This item is filmed at the reduction ratio checked below/
Ce document est filmé au taux de réduction indiqué ci-dessous.

10X	14X	18X	22X	26X	30X
<input type="checkbox"/>	<input type="checkbox"/>	<input checked="" type="checkbox"/>	<input type="checkbox"/>	<input type="checkbox"/>	<input type="checkbox"/>
12X	16X	20X	24X	28X	32X

The copy filmed here has been reproduced thanks to the generosity of:

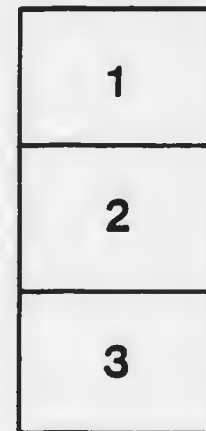
D. B. Weldon Library
University of Western Ontario
(Regional History Room)

The images appearing here are the best quality possible considering the condition and legibility of the original copy and in keeping with the filming contract specifications.

Original copies in printed paper covers are filmed beginning with the front cover and ending on the last page with a printed or illustrated impression, or the back cover when appropriate. All other original copies are filmed beginning on the first page with a printed or illustrated impression, and ending on the last page with a printed or illustrated impression.

The last recorded frame on each microfiche shall contain the symbol \rightarrow (meaning "CONTINUED"), or the symbol ∇ (meaning "END"), whichever applies.

Maps, plates, charts, etc., may be filmed at different reduction ratios. Those too large to be entirely included in one exposure are filmed beginning in the upper left hand corner, left to right and top to bottom, as many frames as required. The following diagrams illustrate the method:



L'exemplaire filmé fut reproduit grâce à la générosité de:

D. B. Weldon Library
University of Western Ontario
(Regional History Room)

Les images suivantes ont été reproduites avec le plus grand soin, compte tenu de la condition et de la netteté de l'exemplaire filmé, et en conformité avec les conditions du contrat de filmage.

Les exemplaires originaux dont la couverture en papier est imprimée sont filmés en commençant par le premier plat et en terminant soit par la dernière page qui comporte une empreinte d'impression ou d'illustration, soit par le second plat, selon le cas. Tous les autres exemplaires originaux sont filmés en commençant par la première page qui comporte une empreinte d'impression ou d'illustration et en terminant par la dernière page qui comporte une telle empreinte.

Un des symboles suivants apparaîtra sur la dernière image de chaque microfiche, selon le cas: le symbole \rightarrow signifie "A SUIVRE", le symbole ∇ signifie "FIN".

Les cartes, planches, tableaux, etc., peuvent être filmés à des taux de réduction différents. Lorsque le document est trop grand pour être reproduit en un seul cliché, il est filmé à partir de l'angle supérieur gauche, de gauche à droite, et de haut en bas, en prenant le nombre d'images nécessaire. Les diagrammes suivants illustrent la méthode.

*Votes of the House of Assembly on the second expulsion of
W. L. Mackenzie, Esq. member for the county of York.*

HOUSE OF ASSEMBLY, SATURDAY 7th JANUARY, 1832.

The Solicitor General, seconded by Mr. Elliott, moves that it be Resolved.

That William Lyon Mackenzie, Esq. a member returned to represent the county of York, in Provincial Parliament has been expelled this house during the present session, for the publication of certain gross, scandalous and malicious libels, intended and calculated to bring this house, and the government of the Province into contempt, and to excite groundless suspicion and distrust in the minds of the inhabitants of this Province as to the proceedings and motives of their Representatives.

That since his re-election in a certain newspaper called the Colonial Advocate, dated 5th January instant, in an article therein published, entitled "articles of impeachment or public accusations read and submitted to the consideration of the electors of the county of York, in county court assembled on Monday 2d January 1832 by Mr. Mackenzie their late member against the Lieutenant Governor and the advisers of the Crown," of which he has avowed himself the author, and in a certain other article in the same paper of the same date purporting to be an address, "*To the people of Upper Canada*" of which he has also acknowledged himself the author, has, in high contempt of this house and its privileges not only re-asserted the said gross, scandalous and malicious libels for which he the said William Lyon Mackenzie had been expelled; but hath also in the said articles endeavoured by false, scandalous and malicious representations to cause his Majesty's subjects of this Province, to believe that the majority of their representatives should be held in execration and abhorrence by posterity, as enemies to the liberties of the people they represent,—as persons who would by violent and unconstitutional means destroy the liberty of the press, and convert the fifty members of which this house is composed into tyrants, in close and unholy alliance with trained bands of public robbers.

Wherefore it is Resolved. That the said William Lyon Mackenzie be expelled this house and declared unfit and unworthy to hold a seat therein.

Mr. MacNab, seconded by Mr. Vankoughnett, moves, in amendment, that after the word "therein" the following words be added "during the present Parliament."

On which amendment the house divided and the yeas and nays were taken as follows :

Yeas. Messrs. Attorney General, Berczy, Boulton, Brown, Burwell, Chisholm, Crooks, Elliott, A. Fraser, Jarvis, Jones, Lewis, McMartin, MacNab, Magon, Morris, Mount, Robinson, Samson, Shade, Sol. General, Thomson, Vankoughnett, Warren, Werden, J. Willson, W. Wilson, 27.

Nays. Messrs. Beardsley, Bidwell, Buell, Campbell, Clark, Cook, Duncombe, Howard, Ketchum, Lyons, McCall, A. McDonald, D. McDonald, Norton, Perry, Randal, Roblin, Shaver, White, 19.

The question of amendment was carried in the affirmative by a majority of eight.

The original question as amended was then put, on which the house divided as follows :

Yeas Messrs. Attorney General, Berczy, Boulton, Brown, Burwell, Chisholm, Crooks, Elliott, A. Fraser, Jarvis, Jones, Lewis, McMartin, MacNab, Magon, Morris, Mount, Robinson, Samson, Shade, Sol. General, Thomson, Vankoughnett, Warren, Werden, J. Willson, W. Wilson, 27.

Nays Messrs. Beardsley, Bidwell, Buell, Campbell, Clark, Cook, Duncombe, Howard, Ketchum, Lyons, McCall, A. McDonald, D. McDonald, Norton, Perry, Randal, Roblin, Shaver, White, 19.

The question was carried in the affirmative by a majority of eight.

