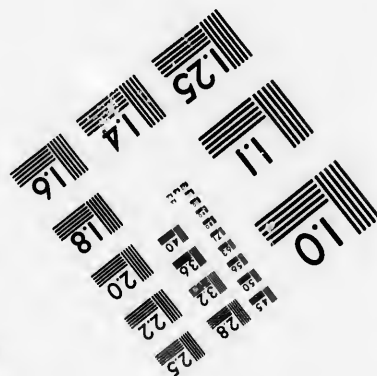
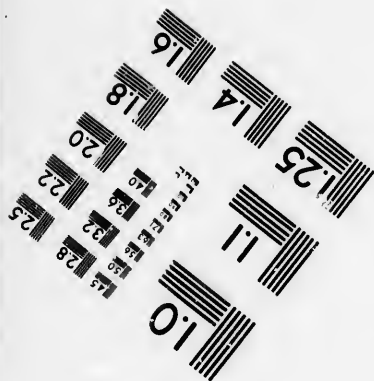
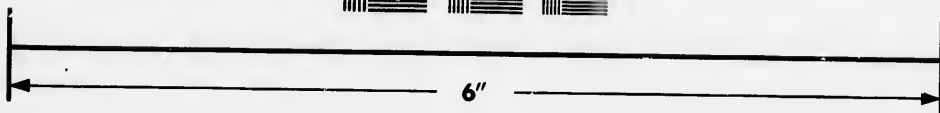
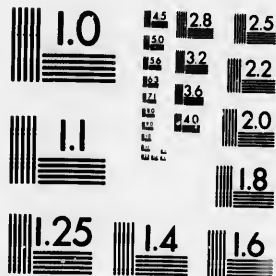


**IMAGE EVALUATION
TEST TARGET (MT-3)**



**Photographic
Sciences
Corporation**

23 WEST MAIN STREET
WEBSTER, N.Y. 14580
(716) 872-4503



**CIHM/ICMH
Microfiche
Series.**

**CIHM/ICMH
Collection de
microfiches.**



Canadian Institute for Historical Microreproductions / Institut canadien de microreproductions historiques



© 1986

Technical and Bibliographic Notes/Notes techniques et bibliographiques

The Institute has attempted to obtain the best original copy available for filming. Features of this copy which may be bibliographically unique, which may alter any of the images in the reproduction, or which may significantly change the usual method of filming, are checked below.

L'Institut a microfilmé le meilleur exemplaire qu'il lui a été possible de se procurer. Les détails de cet exemplaire qui sont peut-être uniques du point de vue bibliographique, qui peuvent modifier une image reproduite, ou qui peuvent exiger une modification dans la méthode normale de filmage sont indiqués ci-dessous.

- Coloured covers/
Couverture de couleur
- Covers damaged/
Couverture endommagée
- Covers restored and/or laminated/
Couverture restaurée et/ou pelliculée
- Cover title missing/
Le titre de couverture manque
- Coloured maps/
Cartes géographiques en couleur
- Coloured ink (i.e. other than blue or black)/
Encre de couleur (i.e. autre que bleue ou noire)
- Coloured plates end/or illustrations/
Planches et/ou illustrations en couleur
- Bound with other material/
Relié avec d'autres documents
- Tight binding may cause shadows or distortion along interior margin/
La reliure serrée peut causer de l'ombre ou de la distorsion le long de la marge intérieure
- Blank leaves added during restoration may appear within the text. Whenever possible, these have been omitted from filming/
Il se peut que certaines pages blanches ajoutées lors d'une restauration apparaissent dans le texte, mais, lorsque cela était possible, ces pages n'ont pas été filmées.
- Additional comments: [Printed ephemera] 1 sheet (verso blank)
Commentaires supplémentaires:
- Coloured pages/
Pages de couleur
- Pages damaged/
Pages endommagées
- Pages restored and/or laminated/
Pages restaurées et/ou pelliculées
- Pages discoloured, stained or foxed/
Pages décolorées, tachetées ou piquées
- Pages detached/
Pages détachées
- Showthrough/
Transparence
- Quality of print varies/
Qualité inégale de l'impression
- Includes supplementary material/
Comprend du matériel supplémentaire
- Only edition available/
Seule édition disponible
- Pages wholly or partially obscured by errata slips, tissues, etc., have been refilmed to ensure the best possible image/
Les pages totalement ou partiellement obscurcies par un feuillet d'errata, une pelure, etc., ont été filmées à nouveau de façon à obtenir la meilleure image possible.

This item is filmed at the reduction ratio checked below/
Ce document est filmé au taux de réduction indiqué ci-dessous.

10X	14X	18X	22X	26X	30X
				✓	
12X	16X	20X	24X	28X	32X

The copy filmed here has been reproduced thanks to the generosity of:

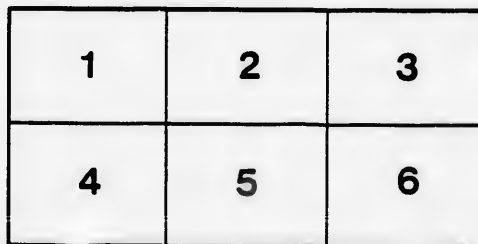
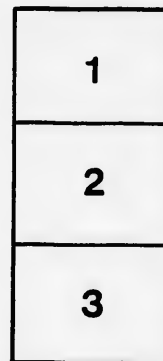
Manuscript Division
Public Archives of Canada

The images appearing here are the best quality possible considering the condition and legibility of the original copy and in keeping with the filming contract specifications.

Original copies in printed paper covers are filmed beginning with the front cover and ending on the last page with a printed or illustrated impression, or the back cover when appropriate. All other original copies are filmed beginning on the first page with a printed or illustrated impression, and ending on the last page with a printed or illustrated impression.

The last recorded frame on each microfiche sheet contains the symbol \rightarrow (meaning "CONTINUED"), or the symbol ∇ (meaning "END"), whichever applies.

Maps, plates, charts, etc., may be filmed at different reduction ratios. Those too large to be entirely included in one exposure are filmed beginning in the upper left hand corner, left to right and top to bottom, as many frames as required. The following diagrams illustrate the method:



L'exemplaire filmé fut reproduit grâce à la générosité de:

Division des manuscrits
Archives publiques du Canada

Les images suivantes ont été reproduites avec le plus grand soin, compte tenu de la condition et de la netteté de l'exemplaire filmé, et en conformité avec les conditions du contrat de filmage.

Les exemplaires originaux dont la couverture en papier est imprimée sont filmés en commençant par le premier plat et en terminant soit par la dernière page qui comporte une empreinte d'impression ou d'illustration, soit par le second plat, selon le cas. Tous les autres exemplaires originaux sont filmés en commençant par la première page qui comporte une empreinte d'impression ou d'illustration et en terminant par la dernière page qui comporte une telle empreinte.

Un des symboles suivants apparaîtra sur la dernière image de chaque microfiche, selon le cas: le symbole \rightarrow signifie "A SUIVRE", le symbole ∇ signifie "FIN".

Les cartes, planches, tableaux, etc., peuvent être filmés à des taux de réduction différents. Lorsque le document est trop grand pour être reproduit en un seul cliché, il est filmé à partir de l'angle supérieur gauche, de gauche à droite, et de haut en bas, en prenant le nombre d'images nécessaire. Les diagrammes suivants illustrent la méthode.

V.



PROCLAMATION

SOUTHERN

County Since

PUBLIC NOTICE is hereby given



00899

R.

AMMATION.

RIDING,
mcoe, to Wit.

by given to the Electors of the SOUTH

PUBLIC NOTICE is hereby given

PUBLIC NOTICE is hereby given
RIDING, that in obedience to Her Majesty's Writ, to n
day of June, in the year of our Lord One Thousand Eig
presence of the said Electors at the Common School H
of West Gwillimbury, on Monday the Seventeenth day o
pose of electing a person to represent them in the Legis
case a Poll shall be demanded and allowed, in the
opened on Monday the Twentyfourth day of July, 18
Townships, divided into Wards, at the place where the
ships and Union of Townships held its first meeting for
ships and Union of Townships, not divided into Wards
ings where respectively held.

Provided nevertheless, that in case
should have been held at a Tavern, that then and in tha
f the said Townships, or Union of Townships where s
himself appoint the place, selecting such as he shall dec
the majority of **THE ELECTORS**, as provided for by

Of all which every person is hereby required to take notice, and to govern himself
Given under my hand, at Barrie, in the said County of Simcoe, this Fifth day of Jul

GEO

GOD SAVE th

reby given to the Electors of the **SOUTH**
ty's Writ, to me directed, and bearing date the Twentythird
Thousand Eight Hundred and Fifty Four, I require the
mon School House, in the village of Bond Head, Township
venteenth day of July, 1854, at 12 o'clock, noon, for the pur-
m in the Legislative Assembly of this Province; and that in
owed, in the manner by Law prescribed, such Poll will be
ay of July, 1854, in each of the Townships, and Union of
ace where the Municipal Council for each of the said Town-
st meeting for the present year: and in each of those Town-
ed into Wards, at the place where the last Township Meet-

at in case such meetings, or any of them,
hen and in that case, the Deputy returning Officer for each
nships where such meeting had been held at a Tavern, shall
as he shall deem most **CENTRAL** and **CONVENIENT** for
rovided for by law.

and to govern himself accordingly.

ie, this Fifth day of July, in the year of our Lord One Thousand Eight Hundred and Fifty-four.

GEO. LOUNT,
Returning Officer.

E the QUEEN!

