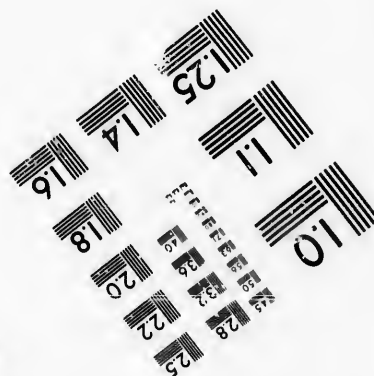
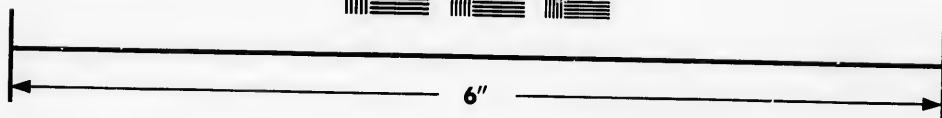
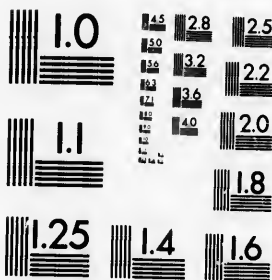


**IMAGE EVALUATION
TEST TARGET (MT-3)**



**Photographic
Sciences
Corporation**

23 WEST MAIN STREET
WEBSTER, N.Y. 14580
(716) 872-4503

**CIHM/ICMH
Microfiche
Series.**

**CIHM/ICMH
Collection de
microfiches.**



Canadian Institute for Historical Microreproductions / Institut canadien de microreproductions historiques

© 1986

Technical and Bibliographic Notes/Notes techniques et bibliographiques

The Institute has attempted to obtain the best original copy available for filming. Features of this copy which may be bibliographically unique, which may alter any of the images in the reproduction, or which may significantly change the usual method of filming, are checked below.

L'Institut a microfilmé le meilleur exemplaire qu'il lui a été possible de se procurer. Les détails de cet exemplaire qui sont peut-être uniques du point de vue bibliographique, qui peuvent modifier une image reproduite, ou qui peuvent exiger une modification dans la méthode normale de filmage sont indiqués ci-dessous.

- | | |
|--|--|
| <input type="checkbox"/> Coloured covers/
Couverture de couleur | <input type="checkbox"/> Coloured pages/
Pages de couleur |
| <input type="checkbox"/> Covers damaged/
Couverture endommagée | <input type="checkbox"/> Pages damaged/
Pages endommagées |
| <input type="checkbox"/> Covers restored and/or laminated/
Couverture restaurée et/ou pelliculée | <input type="checkbox"/> Pages restored and/or laminated/
Pages restaurées et/ou pelliculées |
| <input type="checkbox"/> Cover title missing/
Le titre de couverture manque | <input checked="" type="checkbox"/> Pages discoloured, stained or foxed/
Pages décolorées, tachetées ou piquées |
| <input type="checkbox"/> Coloured maps/
Cartes géographiques en couleur | <input type="checkbox"/> Pages detached/
Pages détachées |
| <input type="checkbox"/> Coloured ink (i.e. other than blue or black)/
Encre de couleur (i.e. autre que bleue ou noire) | <input type="checkbox"/> Showthrough/
Transparence |
| <input type="checkbox"/> Coloured plates and/or illustrations/
Planches et/ou illustrations en couleur | <input type="checkbox"/> Quality of print varies/
Qualité inégale de l'impression |
| <input checked="" type="checkbox"/> Bound with other material/
Relié avec d'autres documents | <input type="checkbox"/> Includes supplementary material/
Comprend du matériel supplémentaire |
| <input type="checkbox"/> Tight binding may cause shadows or distortion
along interior margin/
La reliure serrée peut causer de l'ombre ou de la
distorsion le long de la marge intérieure | <input type="checkbox"/> Only edition available/
Seule édition disponible |
| <input type="checkbox"/> Blank leaves added during restoration may
appear within the text. Whenever possible, these
have been omitted from filming/
Il se peut que certaines pages blanches ajoutées
lors d'une restauration apparaissent dans le texte,
mais, lorsque cela était possible, ces pages n'ont
pas été filmées. | <input type="checkbox"/> Pages wholly or partially obscured by errata
slips, tissues, etc., have been refilmed to
ensure the best possible image/
Les pages totalement ou partiellement
obscurcies par un feuillet d'errata, une pelure,
etc., ont été filmées à nouveau de façon à
obtenir la meilleure image possible. |
| <input checked="" type="checkbox"/> Additional comments: / [Printed ephemera] [4] p.
Commentaires supplémentaires: | |

This item is filmed at the reduction ratio checked below/
Ce document est filmé au taux de réduction indiqué ci-dessous.

10X	12X	14X	15X	16X	18X	20X	22X	24X	26X	28X	30X	32X
					✓							

The copy filmed here has been reproduced thanks to the generosity of:

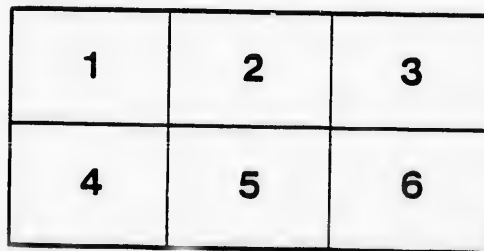
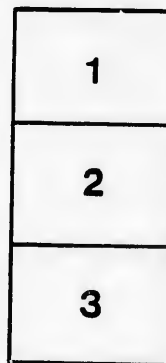
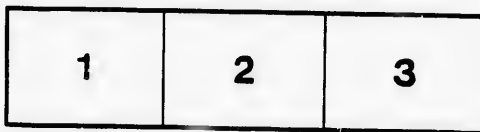
D. B. Weldon Library
University of Western Ontario
(Regional History Room)

The images appearing here are the best quality possible considering the condition and legibility of the original copy and in keeping with the filming contract specifications.

Original copies in printed paper covers are filmed beginning with the front cover and ending on the last page with a printed or illustrated impression, or the back cover when appropriate. All other original copies are filmed beginning on the first page with a printed or illustrated impression, and ending on the last page with a printed or illustrated impression.

The last recorded frame on each microfiche shall contain the symbol \rightarrow (meaning "CONTINUED"), or the symbol ∇ (meaning "END"), whichever applies.

Maps, plates, charts, etc., may be filmed at different reduction ratios. Those too large to be entirely included in one exposure are filmed beginning in the upper left hand corner, left to right and top to bottom, as many frames as required. The following diagrams illustrate the method:



L'exemplaire filmé fut reproduit grâce à la générosité de:

D. B. Weldon Library
University of Western Ontario
(Regional History Room)

Les images suivantes ont été reproduites avec le plus grand soin, compte tenu de la condition et de la netteté de l'exemplaire filmé, et en conformité avec les conditions du contrat de filmage.

Les exemplaires originaux dont la couverture en papier est imprimée sont filmés en commençant par le premier plat et en terminant soit par la dernière page qui comporte une empreinte d'impression ou d'illustration, soit par le second plat, selon le cas. Tous les autres exemplaires originaux sont filmés en commençant par la première page qui comporte une empreinte d'impression ou d'illustration et en terminant par la dernière page qui comporte une telle empreinte.

Un des symboles suivants apparaîtra sur la dernière image de chaque microfiche, selon le cas: le symbole \rightarrow signifie "A SUIVRE", le symbole ∇ signifie "FIN".

Les cartes, planches, tableaux, etc., peuvent être filmés à des taux de réduction différents. Lorsque le document est trop grand pour être reproduit en un seul cliché, il est filmé à partir de l'angle supérieur gauche, de gauche à droite, et de haut en bas, en prenant le nombre d'images nécessaire. Les diagrammes suivants illustrent la méthode.

1892 - '93

THE BACORIAN CLUB

+ NINTH ANNUAL BANQUET +



FRIDAY MAY 5th 1893

TECUMSEH HOUSE, LONDON

"Again the feast the speech, the cheer,
 The shade of passing thought, the wealth
 Of words and wit, the double health,
 The crowning cup, the three times three" *Traveller*

Richard Handman langem Handman lectum et Handman amica amica
1898 [unclear]

MENU

CONSOMME IMPERIALE

FILETS OF FISH, *à la Truie*

à la Truie

WELSH RABBIT

LETUCE WITH DRESSING

WELSH RABBIT

SUPPER OF SWEETENED *à la Champagne*

WELSH RABBIT *à la Truie* *à la Truie* *à la Truie*

WELSH RABBIT OF PRIME FISH *à la Truie* *à la Truie*

WELSH RABBIT *à la Truie* *à la Truie*

SWEET POTATOES

NEW POTATOES

FRENCH BEAN

WELSH RABBIT *à la Truie* *à la Truie* *à la Truie*

WELSH RABBIT JELLY

WHIPPED CREAM *à la Meringue*

CHARLOTTE RÔLE

STRAWBERRY AND CREAM

FRUIT

CHEESE

FRENCH COFFEE

By order of the Board of Directors of the Hotel
New York & Albany, N. Y. 1898

We have a small soul who can hold it all within the compass of his ribs — *Spurgeon*

TOASTS

“A good dinner, a banquet or even a profusion of banquets.” — *Lord Dufferin*

“The Queen”

Oh! loyal to the royal as thyself
And loyal to the land as thou to thee. — *Tennyson*

The Baconian Club.

G. N. WATSON

The end of wisdom is consultation and deliberation. — *Democritus*

The Memory of Lord Bacon

Wm. M. P. TAYLOR

The History of what man has accomplished in this world is at bottom the History
of the Great Men who have worked here. — *Henry and Clara Irving*

Our Native Land.

R. A. LIVING

Love them thy land, with love far being it,
Fours on the crumpled mat. — *Tennyson*

The Learned Professions

They are chosen to furnish to all mankind, either by wisdom, *skilful hands*
— *Mary Queen of Scots*

DRIVERS

J. W. WATSON

They govern their numerous vehicles
By speedier laws and kinder.

Walter

LAW

C. J. JONES

Let justice, and not gold, reward thy
No matter for what strikes. — *John Lydgate*

MEDICINE

J. F. ALLEN

His sagacious genius illuminated,
The profundity of his nature.

Henry Carey

EDUCATION

W. F. FLEMING

Diffused a new light upon the world,
The lamp of knowledge.

The Press.

G. R. S. JONES

We give voice to a government of men and to many newspapers. — *Shakespeare*

Literature.

R. A. LIVING

Read the immortal and immortal — not to believe and take the greatest — not to find
and the immortal — not to believe and take the greatest — not to find

The Future.

J. WATSON

As that world ring the bell of doom,
And that world shake the history
Of this generation, which is to be. — *John Lydgate*

The Modern Drama.

W. A. FLEMING

After it was improved to the last in nature. — *Walter*

The World's Fair.

W. A. FLEMING

The golden age of the world's fair. — *W. A. Fleming*

Music.

W. A. FLEMING

Music is the immortal language of the world.
Music is well said to be the speech of angels. — *Walter*

The Ladies.

J. F. ALLEN

The woman's world is the world of the future.
Something between a man and a woman. — *Walter*

Our Wobblers.

Apprentice to the world of the future. — *Walter*

"On their own merits, modest men are dumb"

—G. Colman



OFFICERS.

SEASON, 1907-08

President—G. N. WILKES

Vice-President—REV. M. R. TALLING

Secretary-Treasurer—W. C. FERGUSON

EXECUTIVE COMMITTEE:

JOHN STEVENSON ROSELLE POCOCK G. R. FARMER

"He knows him that would open the sack of this rough world, search him out himself"
—King Lear



MORTREUX.

RECITALS:

"Man! Man! What was going to be said!"

—The Merchant of Venice

URBAN A. BUCHNER J. B. FERGUSON
& YVING

MUSIC:

"Such songs have power to pierce
The careless pride of man."

—Longfellow

W. C. FERGUSON ROSELLE POCOCK
C. G. POWELL R. A. GRAY

"I do not sing for ease I sing"

—Tennyson

"Laughing, Auld Jock Barclay sang:
What dangers these caused usks at night!"

—Burns

