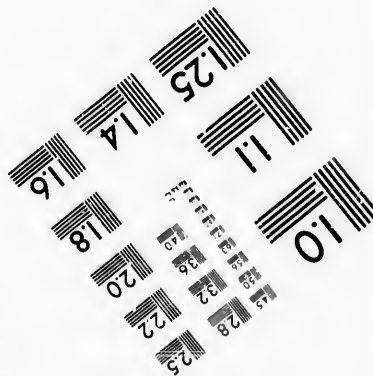
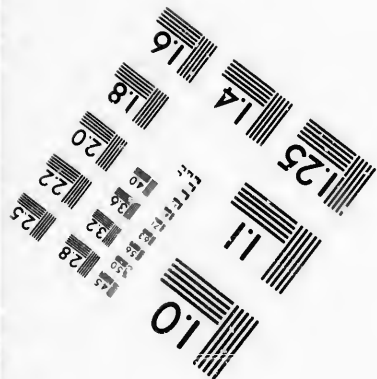
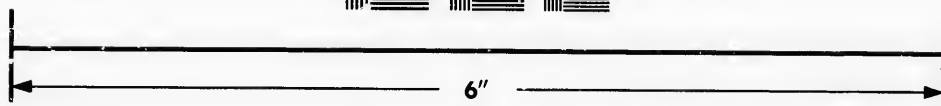
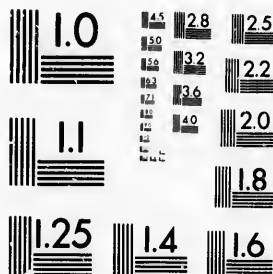


**IMAGE EVALUATION  
TEST TARGET (MT-3)**



Photographic  
Sciences  
Corporation

23 WEST MAIN STREET  
WEBSTER, N.Y. 14580  
(716) 872-4503



**CIHM/ICMH  
Microfiche  
Series.**

**CIHM/ICMH  
Collection de  
microfiches.**



**Canadian Institute for Historical Microreproductions / Institut canadien de microreproductions historiques**



**© 1986**

Technical and Bibliographic Notes/Notes techniques et bibliographiques

The Institute has attempted to obtain the best original copy available for filming. Features of this copy which may be bibliographically unique, which may alter any of the images in the reproduction, or which may significantly change the usual method of filming, are checked below.

L'Institut a microfilmé le meilleur exemplaire qu'il lui a été possible de se procurer. Les détails de cet exemplaire qui sont peut-être uniques du point de vue bibliographique, qui peuvent modifier une image reproduite, ou qui peuvent exiger une modification dans la méthode normale de filmage sont indiqués ci-dessous.

- |  |  |
|--|--|
| <input type="checkbox"/> Coloured covers/<br>Couverture de couleur   | <input type="checkbox"/> Coloured pages/<br>Pages de couleur   |
| <input type="checkbox"/> Covers damaged/<br>Couverture endommagée  | <input type="checkbox"/> Pages damaged/<br>Pages endommagées   |
| <input type="checkbox"/> Covers restored and/or laminated/<br>Couverture restaurée et/ou pelliculée  | <input type="checkbox"/> Pages restored and/or laminated/<br>Pages restaurées et/ou pelliculées  |
| <input type="checkbox"/> Cover title missing/<br>Le titre de couverture manque   | <input checked="" type="checkbox"/> Pages discoloured, stained or foxed/<br>Pages décolorées, tachetées ou piquées   |
| <input type="checkbox"/> Coloured maps/<br>Cartes géographiques en couleur   | <input type="checkbox"/> Pages detached/<br>Pages détachées  |
| <input type="checkbox"/> Coloured ink (i.e. other than blue or black)/<br>Encre de couleur (i.e. autre que bleue ou noire)   | <input checked="" type="checkbox"/> Showthrough/<br>Transparence   |
| <input type="checkbox"/> Coloured plates and/or illustrations/<br>Planches et/ou illustrations en couleur  | <input type="checkbox"/> Quality of print varies/<br>Qualité inégale de l'impression   |
| <input type="checkbox"/> Bound with other material/<br>Relié avec d'autres documents   | <input type="checkbox"/> Includes supplementary material/<br>Comprend du matériel supplémentaire   |
| <input type="checkbox"/> Tight binding may cause shadows or distortion<br>along interior margin/<br>La reliure serrée peut causer de l'ombre ou de la<br>distorsion le long de la marge intérieure   | <input type="checkbox"/> Only edition available/<br>Seule édition disponible   |
| <input type="checkbox"/> Blank leaves added during restoration may<br>appear within the text. Whenever possible, these<br>have been omitted from filming/<br>Il se peut que certaines pages blanches ajoutées<br>lors d'une restauration apparaissent dans le texte,<br>mais, lorsque cela était possible, ces pages n'ont<br>pas été filmées. | <input type="checkbox"/> Pages wholly or partially obscured by errata<br>slips, tissues, etc., have been refilmed to<br>ensure the best possible image/<br>Les pages totalement ou partiellement<br>obscurcies par un feuillet d'errata, une pelure,<br>etc., ont été filmées à nouveau de façon à<br>obtenir la meilleure image possible. |
| <input checked="" type="checkbox"/> Additional comments: [Printed ephemera] [4] p.<br>Commentaires supplémentaires:  |  |

This item is filmed at the reduction ratio checked below/  
Ce document est filmé au taux de réduction indiqué ci-dessous.

10X	12X	14X	16X	18X	20X	22X	24X	26X	28X	30X	32X
								✓			

The copy filmed here has been reproduced thanks to the generosity of:

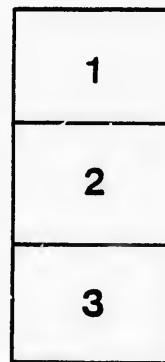
D. B. Weldon Library  
University of Western Ontario  
(Regional History Room)

The images appearing here are the best quality possible considering the condition and legibility of the original copy and in keeping with the filming contract specifications.

Original copies in printed paper covers are filmed beginning with the front cover and ending on the last page with a printed or illustrated impression, or the back cover when appropriate. All other original copies are filmed beginning on the first page with a printed or illustrated impression, and ending on the last page with a printed or illustrated impression.

The last recorded frame on each microfiche shall contain the symbol  $\rightarrow$  (meaning "CONTINUED"), or the symbol  $\nabla$  (meaning "END"), whichever applies.

Maps, plates, charts, etc., may be filmed at different reduction ratios. Those too large to be entirely included in one exposure are filmed beginning in the upper left hand corner, left to right and top to bottom, as many frames as required. The following diagrams illustrate the method:



L'exemplaire filmé fut reproduit grâce à la générosité de:

D. B. Weldon Library  
University of Western Ontario  
(Regional History Room)

Les images suivantes ont été reproduites avec le plus grand soin, compte tenu de la condition et de la netteté de l'exemplaire filmé, et en conformité avec les conditions du contrat de filmage.

Les exemplaires originaux dont la couverture en papier est imprimée sont filmés en commençant par le premier plat et en terminant soit par la dernière page qui comporte une empreinte d'impression ou d'illustration, soit par le second plat, selon le cas. Tous les autres exemplaires originaux sont filmés en commençant par la première page qui comporte une empreinte d'impression ou d'illustration et en terminent par la dernière page qui comporte une telle empreinte.

Un des symboles suivants apparaîtra sur la dernière image de chaque microfiche, selon le cas: le symbole  $\rightarrow$  signifie "A SUIVRE", le symbole  $\nabla$  signifie "FIN".

Les cartes, planches, tableaux, etc., peuvent être filmés à des taux de réduction différents. Lorsque le document est trop grand pour être reproduit en un seul cliché, il est filmé à partir de l'angle supérieur gauche, de gauche à droite, et de haut en bas, en prenant le nombre d'images nécessaire. Les diagrammes suivants illustrent la méthode.

errata  
to

pelure,  
à

MICHIGAN, OHIO  
CANADIAN CIRCUIT

EIGHTEEN  
THEATRES

CLEVELAND, CINCINNATI, BUFFALO,  
DETROIT, TORONTO,  
TOLEDO, LONDON, HAMILTON,  
WOODSTOCK, SAGINAW,  
GRAND RAPIDS, BAY CITY AND  
JACKSON.



# Grand Opera House

## London.

C. J. WHITNEY. A. E. ROOTE. ONTARIO.  
LESSEE. MANAGER



W. SMITH. E. HOLLAND. W. S. PARTRIDGE.

### SMITH & BROS.

THE LEADING  
SANITARY  
PLUMBERS  
AND  
HEATING  
ENGINEERS  
OF  
WESTERN  
ONTARIO.

376 RICHMOND STREET, LONDON.  
OPPOSITE GRAND OPERA HOUSE BUILDING.

A full stock of Supplies always on hand.

TELEPHONE 538.

(London Printing and Litho. Co.)

LADIES! THE ONLY WAY TO GET HELP IS THROUGH THE "FREE PRESS" WANT COLUMN.



Parisian  
Steam  
Laundry

73 & 75 DUNDAS STREET.

BRANCH OFFICES:

256 Dundas St. 752 Waterloo. 410 Hamilton Rd.  
280 " " 572 Pall Mall. 211 Wellington.  
370 " " 350 Richmond. 338 Ridout.  
632 " " 485 " "

J. K. SPRY, Manager.

**HUESTON'S**

**LIVERY,**  
**Goupe & Cab Stables**  
WELLINGTON STREET.

Finest Horses and Carriages in the City.  
OPEN DAY AND NIGHT. TELEPHONE 441.

**ROBT. HUESTON,**  
Proprietor.

**H. McKENNA,**  
—FOR—

**Choice Cigars, Tobaccos**  
AND PIPES.

ALWAYS OPEN .....  
..... AFTER THE OPERA.

225 DUNDAS STREET.

**SPRING**



1894.

WE have just received the finest assortment of Spring Hats ever shown in the city. We are leaders for correct shapes, try us. A pleasure to show goods.

**Rivard**

LONDON'S FASHIONABLE HATTER AND FURRIER .....  
**400 RICHMOND STREET.**

**WILLIAMS' Pianos** CANADA'S FAVORITE

Cannot be excelled for touch, singing quality, delicacy and great power of tone, with highest excellence of workmanship.

ALL THE LATEST VOCAL AND INSTRUMENTAL MUSIC RECEIVED AS PUBLISHED.

Musical Instruments of all kinds, Strings and Fittings  
AT LOWEST PRICES.

**R. S. WILLIAMS & SON,** 171 DUNDAS STREET,  
LONDON, ONT.

J. A. CRODEN, Manager.



«PROGRAMME»

**HARRY LINDLEY'S BIG CO.**

FIVE NIGHTS, COMMENCING  
WEDNESDAY, MARCH 7th. 1894

Presenting the great sensational English Melo-  
Drama in five acts, entitled

**The Inside Track.**

CAST.

JIM, (A TRAMP) .....	HARRY LINDLEY	
Harry Denbeigh .....	Willis Campbell	
Samuel Glade .....	Wm. Marsh	
Rev. Theo Denbeigh .....	Arthur Denvir	
John Foster .....	D. O. Secord	
Anderson Steele .....	Everett King	
Bill Brown .....	} Strikers {	
Bob Taylor .....		.. W. K. Edwards
Peter Spaulding .....		.. Chas. Omer
Kitty, (Jim's Wife) .....	.. E. P. Alba	
Winnie Foster .....	Leuella Beck	
JERRY, (Rags and Bones) ADELAIDE FLINT	Lottie Sutton	

Songs by LITTLE ETHEL LINDLEY.

(Programme continued on next page.)

SOMETHING NEW.

Opera English & Canadian  
Caramels. Chocolate Creams.

VERY FINEST Olives in Bulk.  
French Crystalized .. Fresh Roquefort Cheese..  
FRUITS.

**FITZGERALD, SCANDRETT & CO.**  
169 Dundas Street.

ESTABLISHED 1831.

**H. DAVIS & SON,**  
**WATCHMAKERS**  
—AND—  
**JEWELLERS**

DEALERS IN ..  
Watches, Clocks, Jewellery, Spectacles,  
Silver Plated Ware, &c.

170 DUNDAS ST., LONDON, ONT.

**W. T. STRONG**

Dispensing  
Chemist,

184 Dundas Street,  
LONDON, - ONTARIO.

**BROWN,**



145 Dundas Street.

OUR aim has been to steadily increase our business by the excellence of our goods and the low price at which we sell them; and we are pleased to tell our patrons that we have succeeded beyond our highest expectations. The reputation enjoyed by Brown's Shoe Store as the leader in ..

First-Class, Stylish, Fine Footwear  
..... has been well earned.

Our 1894 Spring and Summer Stock will contain all the Latest Designs from the leading American and Canadian Houses, and will combine the Novel with the Serviceable.

THE FOLLOWING ARE SOME OF OUR NEWEST:—  
FOR LADIES:

"The Prince Edna," "Lapelle," "Eugene,"  
"Jacquette," "Eulalia," "Summer" (six large buttons), "Blucrerette,"  
"White Stitched Oxford, with French Heel" (very pretty).

FOR GENTLEMEN:

"New York Razor Toe Wing Tip,"  
IN PATENT AND TAN.  
"Ablington," Turned Sole Bal.  
(A VERY NICE DRESS SHOE.)  
"Harvard," Calf Bal.,  
IN TAN AND BLACK.  
"Opera," "Bon-Ton," "Old London."

We have also full lines of staple goods of the highest grade, and in our Heavy Boot Department we sell ten per cent. cheaper than similar goods can be bought for elsewhere. In Boys', Girls' and Babies' Shoes, we carry a great variety in all grades, calculated to meet every requirement for school, play and dress.

See our Windows. Inspect our Goods. Ascertain our Prices.

**BROWN.**  
TELEPHONE 881.

IF YOU WANT THE BEST, TAKE THE "FREE PRESS." ALL THE NEWS!

SON,  
ERS  
ERS  
Spectacles,  
, &c.  
NDON, ONT.  
RONG  
ing  
t,  
street,  
TARIO.  
N,  
eet.  
ndly increase  
excellence of  
ice at which  
eased to tell  
e succeeded  
ona. The re-  
Shoe Store as  
e Footwear  
well earned.  
ock will contain  
ding American  
ubine the Novel  
OUR NEWEST—  
,"Eugene"  
mmer" (six  
erette,"  
with French  
y).  
Wing Tip,"  
N. ole Bal.  
MOE.)  
al.,  
k.  
d London."  
e goods of the  
Department we  
r goods can be  
is' and Habies'  
grades, calcu-  
chool, play and  
ertain our Prices.  
N.

— TRY —  
**SOUTHCOTTS**  
Nice Suit  
Fancy Vest  
Trousers  
NEAT LINE OF LIGHT-WEIGHT OVERCOATINGS IN STOCK.  
Satisfaction Assured. Prices Right.  
361 RICHMOND STREET.

I-I-I-I-I-I-I-I-I-I

PRINTERS  
LITHOGRAPHERS  
ENGRAVERS

The  
London  
Printing and  
Lithographing  
Co'y, SUCCESSORS TO FREE PRESS  
PRINTING AND LITHO.  
DEPARTMENTS.

OFFICE,  
"FREE PRESS"  
BUILDING.

BEST WORK  
AT MODERATE  
PRICES.

I-I-I-I-I-I-I-I-I-I

**TEGUMSEH HOUSE**  
LONDON.



Directly opposite G.T.R. depot;  
street railway past the doors;  
convenient to all the wholesale  
and retail business houses of  
city, making it the most desir-  
able hotel in the city; elevator,  
and heated throughout with  
steam.

Porter in attendance on  
arrival of all trains.

**RATES, \$2.00 AND \$2.50  
PER DAY,**

ACCORDING TO LOCATION.

No Extra Charge For Baggage.

C. W. DAVIS, PROP.

LATEST SHAPES  
In American and English  
**Spring Hats**

JUST OPENED.

**GRAHAM BROS.,**

Leading Hatters and Furnishers.

«Programme Continued.»

Thursday, March 8th.

Presenting the latest New York Sensational Success.

THE GREATEST SENSATIONAL DRAMA OF THE DAY,  
IN PROLOGUE OF TWO ACTS, AND DRAMA  
OF THREE, ENTITLED

THE

**Dark Side of New York**

CAST.

JIM FARRIEN.....	HARRY LINDLEY
Tom Cooper.....	Willis Campbell
Geo. Benson.....	Wm. Marsh
Abraham Nathan....	Arthur Denvir
Mr. Arkwright.....	D. O. Secord
Joe Hammond.....	W. K. Edwards
Charlie Biggs.....	W. Everetts
Abrams.....	E. P. Alba
Anne Benson.....	Lottie Sutton
Nellie Standish.....	
Baby Nellie.....	Ethel Lindley
Mrs. Higgins.....	Louise Lee

—AND—

ADELAIDE FLINT as BIDDY RONAN.

Songs by LITTLE ETHEL LINDLEY.

FRIDAY NIGHT—BELASCO & DeMILLS' GREATEST PLAY,  
The Charity Ball.

EXECUTIVE STAFF.

Manager.....	W. Everett King
Business Manager.....	A. K. Edwards
Stage Manager.....	Arthur Denvir
Musical Director.....	Herbert Wiley
Properties.....	William Hall
Master of Transportation.....	W. Ford

(Programme continued on last page.)

**McLEAN'S HARDWARE**

—FOR—

**Bissell's Carpet Sweepers.**

WE CAN SHOW YOU TWELVE DIFFERENT STYLES SAME  
AS ARE NOW DISPLAYED BY THE BISSELL COM-  
PANY AT THE WORLD'S FAIR.

CALL AND SEE THESE GOODS

—AT—

**McLEAN'S HARDWARE,**  
151 Dundas Street.

**Wm. Stevely & Son,**

—THE LEADING DEALERS IN—

STOVES, RANGES,

...AND...

HOUSE FURNISHING GOODS.

OUR STOCK IS THE LARGEST.

OUR PRICES THE LOWEST.

362 RICHMOND STREET.

PHONE 452.

**W. T. STRONG,**

Dispensing

Chemist,

184 DUNDAS ST.,

LONDON, ONT.

..FOR..

Fine Etchings....

—AND—

Engravings

—TRY—

**O. B. GRAVES,**

222 DUNDAS STREET.

A WONDER-  
WORKING

**Quarter!**

— IS A —

25 CENT PIECE

INVESTED IN **3** Elegant

**GROTTO**  
**BOUQUET**

**CIGARS**

OF QUALITY AND AROMA, MADE OF  
EXCELLENT

HABANA FILLER,

Very Mild and Delicious.

**BRENER BROS.**

**OLD STAMPS WANTED**

All kinds of Canadian, Nova Scotia, New Brunswick, Prince Edward Island, British Columbia, Newfoundland and Un-  
 used stamps are valuable. These we desire to purchase for cash. We pay from 1 cent to \$1000 according to the value of the stamps. Do not cut up your old stamps. We recently paid several hundred dollars for a lot of stamps obtained in this manner. It will pay you. Send all you can find to us on approval and we will remit highest price by return of mail. Common stamps now in use are not wanted. If you have old letters you may have some friends that have. You will confer a favor on both them and us by calling their attention to this. Write now; do not delay.

**L. M. STAEBLER,**  
 185 Dundas Street, - - LONDON, CANADA.  
 (Mention this Paper.)



**FIND YOUR FORTUNE IN LUCKY  
 SANTO DOMINGO**

**INVESTMENT BONDS** guaranteed by the **SANTO DOMINGO GUARANTY CO.**

Allotments take place monthly, and are payable in U. S. gold coin in sums of \$160,000, \$40,000, \$20,000, etc. 5,692 Bonds paid monthly, aggregating \$374,890. Subscription fees, \$10, \$5, \$2, \$1, 50c. and 25c.

Apply to Local Agents, or address,  
**ANTONIO MORA,** CITY OF SANTO DOMINGO,  
 SANTO DOMINGO. . . . .

**EDY BROS.**

The Artistic Photographers,

— RECEIVED —

**Three First Prizes**

— AND —

**DIPLOMA**

For Finest Display of Photography  
 AT WESTERN FAIR, 1893.

Cabinet Photos, \$3 per doz.

**EDY BROS.,**  
 214 DUNDAS STREET.

The **HUB**

Restaurant,

203 & 205 DUNDAS STREET.

For a NICE LUNCH after the  
 Opera, go to the

**Hub Restaurant.**

Steaks, Chops, Chicken,  
 Oysters, Etc.

OPEN TILL 12.00 P.M.

**J. W. MARTIN, Prop.**  
 (Late of the Martin House)

« Programme Concluded. »



**NEXT + ATTRACTION**

COMING NEXT TUESDAY NIGHT,  
 MARCH 13TH.

The New Comedy Opera,  
 in Three Acts,

**THE ALGERIAN.**

Music by **REGINALD DE COVEN.** Book by **GLEN MAC DONOUGH.**

— WITH —

**Adele Ritchie and Herbert Wilke,**

And an Excellent Company.

Direct from **DALY'S THEATRE, New York City.**

**COMING  
 ATTRACTIONS**

Are always a source of interest,—  
 theatrical or otherwise. Our attraction just now is the new coal we are receiving daily. It comes direct from the mines, in box cars; is clean, dry, and strictly first-class. All orders, large or small, will receive our prompt and careful attention. Offices, 421 Richmond St., and 316 Burwell St. **A. D. Cameron & Son.**

WE call the attention of our business men to the PROGRAM as an advertising medium. It reaches the class of people whose trade you want, and the way to get that trade is to make yourself known.

**BELTON & ROOTE,**  
**BILL POSTING,**  
 DISTRIBUTING

GENERAL ADVERTISING AGENTS

Control all the Bill Boards and Dead Walls throughout the City. Population of City, 40,000

All orders for Bill Posting, Distributing Card Tacking, and General Advertising for Western Ontario will receive prompt attention.

OFFICE: BOX OFFICE, OPERA HOUSE.

**Roses, Carnations,**

**Palms,**

**Ferns, Bulbs,**

**J. GAMMAGE & SONS,**

213 Dundas Street.

**INDIAN... TEA IMPORTING HOUSE.**  
**CEYLON**

NEW BLENDS, DELICIOUS AND ECONOMICAL, AT MODERATE PRICES.

"English Breakfast," "Five o'clock Tea," & "Club House" Blends.  
 30c. 50c. 45c.

These Blends are standard selections of choice Teas. Highly recommended to families for their fine quality and economical properties.

**S. FUGE,** —IMPORTER OF—  
**CHOICE TEAS** 212 Dundas St.  
 TELEPHONE 858. LONDON.



