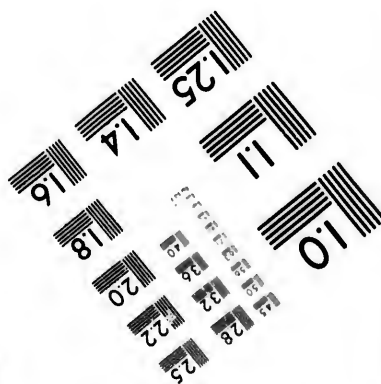
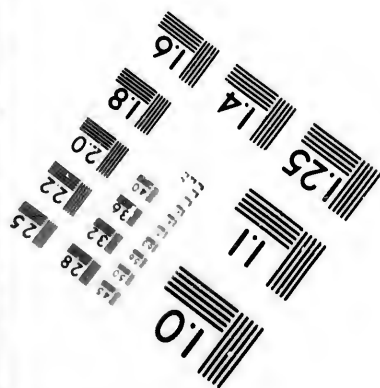
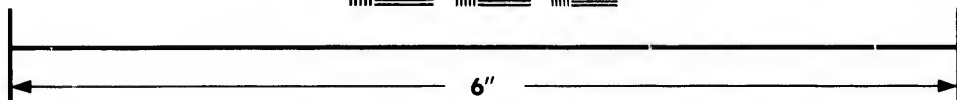
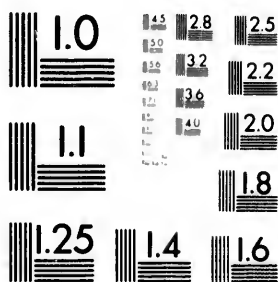


**IMAGE EVALUATION
TEST TARGET (MT-3)**



**Photographic
Sciences
Corporation**

23 WEST MAIN STREET
WEBSTER, N.Y. 14580
(716) 872-4503

14
28
32
25
22
20
8

**CIHM/ICMH
Microfiche
Series.**

**CIHM/ICMH
Collection de
microfiches.**



Canadian Institute for Historical Microreproductions / Institut canadien de microreproductions historiques

10

© 1981

Technical and Bibliographic Notes/Notes techniques et bibliographiques

The Institute has attempted to obtain the best original copy available for filming. Features of this copy which may be bibliographically unique, which may alter any of the images in the reproduction, or which may significantly change the usual method of filming, are checked below.

L'institut a microfilmé le meilleur exemplaire qu'il lui a été possible de se procurer. Les détails de cet exemplaire qui sont peut-être uniques du point de vue bibliographique, qui peuvent modifier une image reproduite, ou qui peuvent exiger une modification dans la méthode normale de filmage sont indiqués ci-dessous.

- Coloured covers/
Couverture de couleur
- Covers damaged/
Couverture endommagée
- Covers restored and/or laminated/
Couverture restaurée et/ou pelliculée
- Cover title missing/
Le titre de couverture manque
- Coloured maps/
Cartes géographiques en couleur
- Coloured ink (i.e. other than blue or black)/
Encre de couleur (i.e. autre que bleue ou noire)
- Coloured plates and/or illustrations/
Planches et/ou illustrations en couleur
- Bound with other material/
Relié avec d'autres documents
- Tight binding may cause shadows or distortion along interior margin/
La reliure serrée peut causer de l'ombre ou de la distorsion le long de la marge intérieure
- Blank leaves added during restoration may appear within the text. Whenever possible, these have been omitted from filming/
Il se peut que certaines pages blanches ajoutées lors d'une restauration apparaissent dans le texte, mais, lorsque cela était possible, ces pages n'ont pas été filmées.
- Additional comments:/
Commentaires supplémentaires:

- Coloured pages/
Pages de couleur
- Pages damaged/
Pages endommagées
- Pages restored and/or laminated/
Pages restaurées et/ou pelliculées
- Pages discoloured, stained or foxed/
Pages décolorées, tachetées ou piquées
- Pages detached/
Pages détachées
- Showthrough/
Transparence
- Quality of print varies/
Qualité inégale de l'impression
- Includes supplementary material/
Comprend du matériel supplémentaire
- Only edition available/
Seule édition disponible
- Pages wholly or partially obscured by errata slips, tissues, etc., have been refilmed to ensure the best possible image/
Les pages totalement ou partiellement obscurcies par un feuillet d'errata, une pelure, etc., ont été filmées à nouveau de façon à obtenir la meilleure image possible.

This item is filmed at the reduction ratio checked below/
Ce document est filmé au taux de réduction indiqué ci-dessous.

10X	14X	18X	22X	26X	30X
<input type="checkbox"/>	<input type="checkbox"/>	<input checked="" type="checkbox"/>	<input type="checkbox"/>	<input type="checkbox"/>	<input type="checkbox"/>
12X	16X	20X	24X	28X	32X

The copy filmed here has been reproduced thanks to the generosity of:

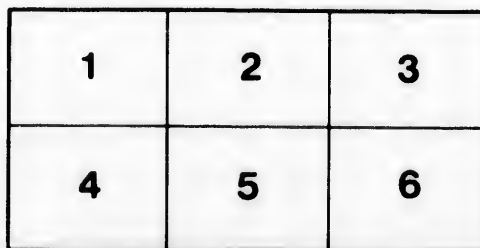
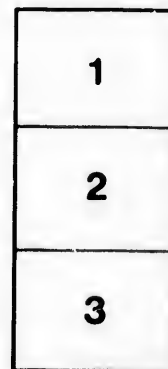
Library Division
Provincial Archives of British Columbia

The images appearing here are the best quality possible considering the condition and legibility of the original copy and in keeping with the filming contract specifications.

Original copies in printed paper covers are filmed beginning with the front cover and ending on the last page with a printed or illustrated impression, or the back cover when appropriate. All other original copies are filmed beginning on the first page with a printed or illustrated impression, and ending on the last page with a printed or illustrated impression.

The last recorded frame on each microfiche shall contain the symbol \rightarrow (meaning "CONTINUED"), or the symbol ∇ (meaning "END"), whichever applies.

Maps, plates, charts, etc., may be filmed at different reduction ratios. Those too large to be entirely included in one exposure are filmed beginning in the upper left hand corner, left to right and top to bottom, as many frames as required. The following diagrams illustrate the method:



L'exemplaire filmé fut reproduit grâce à la générosité de:

Library Division
Provincial Archives of British Columbia

Les images suivantes ont été reproduites avec le plus grand soin, compte tenu de la condition et de la netteté de l'exemplaire filmé, et en conformité avec les conditions du contrat de filmage.

Les exemplaires originaux dont la couverture en papier est imprimée sont filmés en commençant par le premier plat et en terminant soit par la dernière page qui comporte une empreinte d'impression ou d'illustration, soit par le second plat, selon le cas. Tous les autres exemplaires originaux sont filmés en commençant par la première page qui comporte une empreinte d'impression ou d'illustration et en terminant par la dernière page qui comporte une telle empreinte.

Un des symboles suivants apparaîtra sur la dernière image de chaque microfiche, selon le cas: le symbole \rightarrow signifie "A SUIVRE", le symbole ∇ signifie "FIN".

Les cartes, planches, tableaux, etc., peuvent être filmés à des taux de réduction différents. Lorsque le document est trop grand pour être reproduit en un seul cliché, il est filmé à partir de l'angle supérieur gauche, de gauche à droite, et de haut en bas, en prenant le nombre d'images nécessaire. Les diagrammes suivants illustrent la méthode.

NW

970.85

L534:

-
-
-
-
-
-
-
-
-
-
-
+ 0
=
+ 1
=
P
0) 8
+ 1
=
+ 1
/ 5
-
-

First Catechism.
in
Thompson Language.

Lesson I.

+ 66. 10 / 42 ?

= 660 P 10 / 42 .

+ 42 10 / 42

= 420 10 / 42

660 42 2 2 : 02. 200

02. 200 2 2

+ 02. 0 42) 10 / 42 ?

= 020 0 42) 10 / 42 .

+ 020 0 42 0 0 0 0 0 0

42) 10 / 42 ?

- - - - -
 = 10/9 ⁻² 70, 10/9
 70, 10/9 70
 + 70 0 70?
 = 70 - 70 0 70
 10/9: 70 60 10/9
 9.

~~~~~  
 II.  
 ~~~~~

+ 70, 70 70
 0 0?
 = 70 70 70
 70 70 10/9
 10/9 0 70 70
 70 70 70 70

+ ଚିତ୍ର ଚିତ୍ର, ବା ଚିତ୍ର
 ଚିତ୍ର ଚିତ୍ର ?
 = ଚିତ୍ର ଚିତ୍ର ବା ଚିତ୍ର
 ଚିତ୍ର ଚିତ୍ର, ଚିତ୍ର ଚିତ୍ର
 ଚିତ୍ର ଚିତ୍ର, ଚିତ୍ର ଚିତ୍ର
 + ଚିତ୍ର ଚିତ୍ର ଚିତ୍ର
 ଚିତ୍ର ?
 = ଚିତ୍ର ଚିତ୍ର ଚିତ୍ର
 ଚିତ୍ର ଚିତ୍ର ଚିତ୍ର;
 ଚିତ୍ର ଚିତ୍ର ଚିତ୍ର
 + ଚିତ୍ର ଚିତ୍ର ଚିତ୍ର
 ଚିତ୍ର ଚିତ୍ର ଚିତ୍ର
 = ଚିତ୍ର ଚିତ୍ର ଚିତ୍ର
 ଚିତ୍ର ଚିତ୍ର ଚିତ୍ର
 ଚିତ୍ର ଚିତ୍ର ଚିତ୍ର ଚିତ୍ର

- 4 -

+ 2 2 2 2 1.0 1 4 2 ?
 = 1.0 1 4 2 2 2 2 2 2 2
 2 2 2 2 2 2 2 2 2 2
 2 2 2 2 2 2 2 2 2 2
 2 2 2 2 2 2 2 2 2 2

III

+ 2 2 2 2 ?
 = 2 2 2 2 1.0 1 4 2
 2 2 2 2 2 2 2 2 2 2
 2 2 2 2 2 2 2 2 2 2
 + 2 2 2 2 2 2 2 2
 2 2 2 2 ?

- - - - -
 = $\frac{1}{2} \int_0^1 x^2 dx$
 = $\frac{1}{2} \left[\frac{x^3}{3} \right]_0^1$
 = $\frac{1}{2} \left(\frac{1}{3} - 0 \right)$
 = $\frac{1}{6}$
 - - - - -
 = $\frac{1}{2} \int_0^1 x^3 dx$
 = $\frac{1}{2} \left[\frac{x^4}{4} \right]_0^1$
 = $\frac{1}{2} \left(\frac{1}{4} - 0 \right)$
 = $\frac{1}{8}$
 - - - - -
 = $\frac{1}{2} \int_0^1 x^4 dx$
 = $\frac{1}{2} \left[\frac{x^5}{5} \right]_0^1$
 = $\frac{1}{2} \left(\frac{1}{5} - 0 \right)$
 = $\frac{1}{10}$
 - - - - -
 = $\frac{1}{2} \int_0^1 x^5 dx$
 = $\frac{1}{2} \left[\frac{x^6}{6} \right]_0^1$
 = $\frac{1}{2} \left(\frac{1}{6} - 0 \right)$
 = $\frac{1}{12}$
 - - - - -
 = $\frac{1}{2} \int_0^1 x^6 dx$
 = $\frac{1}{2} \left[\frac{x^7}{7} \right]_0^1$
 = $\frac{1}{2} \left(\frac{1}{7} - 0 \right)$
 = $\frac{1}{14}$
 - - - - -
 = $\frac{1}{2} \int_0^1 x^7 dx$
 = $\frac{1}{2} \left[\frac{x^8}{8} \right]_0^1$
 = $\frac{1}{2} \left(\frac{1}{8} - 0 \right)$
 = $\frac{1}{16}$
 - - - - -
 = $\frac{1}{2} \int_0^1 x^8 dx$
 = $\frac{1}{2} \left[\frac{x^9}{9} \right]_0^1$
 = $\frac{1}{2} \left(\frac{1}{9} - 0 \right)$
 = $\frac{1}{18}$
 - - - - -

┌ - - - - - - - - - -
| ~~~~~ . t : o d . P .

| ... 91 3 .

| + 0 , 0 2 2 . 0 2 1 1

| = 0 . t . 0 2 2

| . 0 2 1 .

| + 0 2 . 0 2 1 .

| = 9 9 2 . 0 2 2 0 0 . 0 2 1 .

| y d . 0 6 0 2 1 .

| + 0 , 0 2 2 . 0 1 1 ?

| = 0 . t . 0 2 2

| . 0 2 1 .

| + 0 2 . 0 2 1 ?

| = t 0 2 2 . 0 2 1 0

| 9 1 0 2 1 . 0 2 1 0 2 1

| 0 2 1 : 0 2 1 0 2 1 .

- - - - -

+ ७, ७२२. ७
 = ७२२. ७?

= ७२२. ७२२.

७२२. ७२२. ०. ०. ०.

७२२. ०. ०. ७२२.

७२२. ७२२. ७२२.

+ ७२२. ७२२. ७?

= ७२२. ७२२. ७२२.

७२२. ७२२. ७२२.

७२२. ७२२. ७२२.

+ ७२२. ७२२. ७२२.

७२२. ७२२. ७?

= ७२२. ७२२. ७२२.

७२२. ७२२. ७२२.

७२२. ७२२. ७२२.

- - - - -

- 8 -

+ 02.00 - 8.00

of you & 20.00 +

20.00 - 8.00?

= 12.00

of 8.00 of you &

20.00 + 20.00 - 8.00

for 8.00 & 20.00

10.00 of you.

IV.

+ 42.00 : 10.00 ?

= 32.00

of 10.00, 20.00 -

17.00

$$+ 62 \cdot \overline{9} ?$$

$$= 6 \cdot 10 \cdot 10 : 10$$

$$10/10, 10 \cdot 8, 10$$

$$10/10$$

$$+ 42 \cdot 10 \cdot 10 ?$$

$$= 0 \cdot 2 \cdot 10 \cdot 10$$

$$10 \cdot 10 \cdot 10 \cdot 10$$

$$10 \cdot 10 \cdot 10 \cdot 10$$

$$10 \cdot 10 \cdot 10 \cdot 10$$

$$10 \cdot 10 \cdot 10 \cdot 10$$

$$+ 42 \cdot 10 \cdot 8 \cdot 10$$

$$10 \cdot 10 \cdot 10 ?$$

$$= 0 \cdot 2 \cdot 10 \cdot 10$$

$$8 \cdot 10 \cdot 10 \cdot 10$$

$$10 \cdot 10 \cdot 10$$

1 + 42. ⁻¹⁰ 2000?

= 66. 2000 2

100. 2000 2000

100. 2000 2000

100. 2000 2000

1 + 42. 2000 2000?

= 100. 2000 2000

100. 2000 2000

100. 2000 2000

100. 2000 2000

1 + 42. 2000 2000?

= 100. 2000 2000

100. 2000 2000

100. 2000 2000

100. 2000 2000

-11-

-V-

~

+ 200 200 200 ?

= 200 200 200

200 200 200

200 200 200

200 200 200

200 200 200

200 200 200

200 200 200

200 200 200

+ 200 200 200

200 200 200

= 200 200 200

200 200 200

196. $\frac{1}{2} \times \frac{1}{2} = \frac{1}{4}$
 10. $\frac{1}{2} \times \frac{1}{2} = \frac{1}{4}$
 16. $\frac{1}{2} \times \frac{1}{2} = \frac{1}{4}$
 17. $\frac{1}{2} \times \frac{1}{2} = \frac{1}{4}$
 18. $\frac{1}{2} \times \frac{1}{2} = \frac{1}{4}$
 19. $\frac{1}{2} \times \frac{1}{2} = \frac{1}{4}$

VI.

+ $\frac{1}{2} \times \frac{1}{2} = \frac{1}{4}$
 = $\frac{1}{2} \times \frac{1}{2} = \frac{1}{4}$
 10. $\frac{1}{2} \times \frac{1}{2} = \frac{1}{4}$
 11. $\frac{1}{2} \times \frac{1}{2} = \frac{1}{4}$
 12. $\frac{1}{2} \times \frac{1}{2} = \frac{1}{4}$
 13. $\frac{1}{2} \times \frac{1}{2} = \frac{1}{4}$

... ..
... ..
... ..

+

... ..?

=

... ..

... ..

... ..

+

... ..?

=

... ..

... ..

+

... ..?

-14-

1. $\frac{1}{2} \times \frac{1}{6} = \frac{1}{12}$
 2. $\frac{1}{3} \times \frac{1}{4} = \frac{1}{12}$
 3. $\frac{1}{4} \times \frac{1}{3} = \frac{1}{12}$

VII

1. $\frac{1}{2} \times \frac{1}{3} = \frac{1}{6}$
 2. $\frac{1}{3} \times \frac{1}{2} = \frac{1}{6}$
 3. $\frac{1}{4} \times \frac{1}{2} = \frac{1}{8}$
 4. $\frac{1}{2} \times \frac{1}{4} = \frac{1}{8}$
 5. $\frac{1}{3} \times \frac{1}{4} = \frac{1}{12}$
 6. $\frac{1}{4} \times \frac{1}{3} = \frac{1}{12}$

1. $\frac{1}{2} \times \frac{1}{3} = \frac{1}{6}$
 2. $\frac{1}{3} \times \frac{1}{2} = \frac{1}{6}$
 3. $\frac{1}{4} \times \frac{1}{2} = \frac{1}{8}$
 4. $\frac{1}{2} \times \frac{1}{4} = \frac{1}{8}$

Handwritten notes on the left margin, including symbols like $\frac{1}{2}$, $\frac{1}{3}$, and $\frac{1}{4}$.

Handwritten notes on the right page, starting with a circled number 15. The text includes mathematical expressions and symbols such as $\frac{1}{2}$, $\frac{1}{3}$, $\frac{1}{4}$, and $\frac{1}{5}$.

16.
179 0.0 p.e. 429?

= 1705 0.0 32.0 27

10.0 10.0 p.e. 200

p.d. 100.

+ 100.0 p.d. 100?

= 6600 2.04 0

10.0 10.0 p.e.

10000 2.04 0

10000 0.0 2 100

10.0 p.d. 100.

+ 429 100.0 0

10000 p.d. 100?

= 10000 0.0 42 0

10000 p.d. 100.

10000 2.04 0

1.
 2.
 3.
 4.
 5.
 6.
 7.
 8.
 9.
 10.
 11.
 12.
 13.
 14.
 15.
 16.
 17.
 18.
 19.
 20.
 21.
 22.
 23.
 24.
 25.
 26.
 27.
 28.
 29.
 30.
 31.
 32.
 33.
 34.
 35.
 36.
 37.
 38.
 39.
 40.
 41.
 42.
 43.
 44.
 45.
 46.
 47.
 48.
 49.
 50.
 51.
 52.
 53.
 54.
 55.
 56.
 57.
 58.
 59.
 60.
 61.
 62.
 63.
 64.
 65.
 66.
 67.
 68.
 69.
 70.
 71.
 72.
 73.
 74.
 75.
 76.
 77.
 78.
 79.
 80.
 81.
 82.
 83.
 84.
 85.
 86.
 87.
 88.
 89.
 90.
 91.
 92.
 93.
 94.
 95.
 96.
 97.
 98.
 99.
 100.

+ 421 0 2 1 2 0

0 2 1 0 0 2 1 0

= 4 2 1 0 0 1 2 0

0 2 1 0 0 2 1 0

0 2 1 0 0 2 1 0

0 2 1 0 0 2 1 0

0 2 1 0 0 2 1 0

0 2 1 0 0 2 1 0

0 2 1 0 0 2 1 0

0 2 1 0 0 2 1 0

0 2 1 0 0 2 1 0

0 2 1 0 0 2 1 0

0 2 1 0 0 2 1 0

+ 421 0 2 1 2 0

0 2 1 0

-21-

+ 2 2 3 4 5 6 7 8 9 10

11 12 13 14 15 16 17 18 19 20

= 21 22 23 24 25 26 27 28 29 30

31 32 33 34 35 36 37 38 39 40

41 42 43 44 45 46 47 48 49 50

51 52 53 54 55 56 57 58 59 60

61 62 63 64 65 66 67 68 69 70

71 72 73 74 75 76 77 78 79 80

81 82 83 84 85 86 87 88 89 90

+ 91 92 93 94 95 96 97 98 99 100

101 102 103 104 105 106 107 108 109 110

= 111 112 113 114 115 116 117 118 119 120

121 122 123 124 125 126 127 128 129 130

131 132 133 134 135 136 137 138 139 140

141 142 143 144 145 146 147 148 149 150

1. కుల కుల వుండు.

2. ముల కుల వుండు.

3. లు. కుల వుండు.

4. ము. కుల వుండు.

5. కు - కు.

6. కు. కు. కు. కు.

7. కు. కు. కు. కు.

8. కు. కు. కు. కు.

9. కు. కు. కు. కు.

10. కు. కు. కు. కు.

11. కు. కు. కు. కు.

12. కు. కు. కు. కు.

13. కు. కు. కు. కు.

14. కు. కు. కు. కు.

15. కు. కు. కు. కు.

1-0 W. 0-0 L M

10 W 0 0 0 0

1-0 + 6 2 1 0 2 2 2 2

10 W - 1 0 0 0 0

1 = 0 0 0 0 2 2 2 2

1 W - 1 0 0 0 0 0 0 0

10 W e 2 2 2 2 0

1 0 0 0 0 0 0 0 0 0 0 0

1 0 0 0 0 0 2 2 2 2 2

1 W. 2 2 0 2 2 2

1 0 0 0 0 0 2 2 2 2 2

1 0 0 0 0 0 0 2 2 2 2 2

1 0 2 0 0 0 2 2 2 2 2

1 2 0 0 0 0 0 0 0 0 0

1 0 0 0 2 2 2 2 2 2 2

Handwritten notes on the left margin, including a large 'W' at the top and various symbols and characters.

Handwritten notes on the right page, starting with a circled '25' at the top. The text consists of several lines of symbols, numbers, and characters, possibly representing a sequence or a set of instructions.

1. 2 6 6 0 0 0 0 0 0 0

1. 6 0 7 1 0 0 0 0 0 0

1. 0 0 0 2 0 0 0 0 0 0

1. 0 0 0 0 0 0 0 0 0 0

1. + 0 0 0 0 0 0 0 0 0 0

1. 0 0 0 0 0 0 0 0 0 0

1. = 0 0 0 0 0 0 0 0 0 0

1. 6 0 7 0 0 0 0 0 0 0

1. 0 0 0 0 0 0 0 0 0 0

1. + 0 0 0 0 0 0 0 0 0 0

1. 0 0 0 0 0 0 0 0 0 0

1. 2 0 0 0 0 0 0 0 0 0

1. = 0 0 0 0 0 0 0 0 0 0

1. 0 0 0 0 0 0 0 0 0 0

1. 0 0 0 0 0 0 0 0 0 0

1. 0 0 0 0 0 0 0 0 0 0

1. 0 0 0 0 0 0 0 0 0 0

+ 420 ० १०००००
= १०००००००००

१००००००००००

१०००००००००००

१०००००००००००

१०००००००००००

१०००००००००००

+ ०००००००००००

१०००००००००००

१०००००००००००

१०००००००००००

१०००००००००००

१०००००००००००

१०००००००००००

+ 4 L K. yd
 L. @ @ d). K L?
 = - - L K. yd
 L. @ @ - d). K L?
 10 P. L. to o b
 17 e z . @ 2 o w
 - h .

VIII

+ 4 z . K L!
 = 3 i s . b o o 7
 10 v f o : d . d . - e d o
 10 / q u y e t . o p
 10 d . 2 o n v o v z . v
 10 b v o . v o u t y o .

