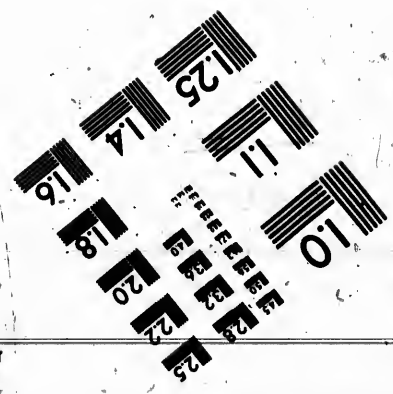
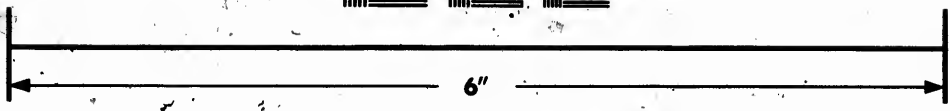
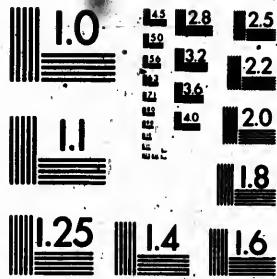


**IMAGE EVALUATION
TEST TARGET (MT-3)**



**Photographic
Sciences
Corporation**

23 WEST MAIN STREET
WEBSTER, N.Y. 14580
(716) 872-4503

1.8
1.9
2.0
2.2
2.5
2.8
3.2
3.6
4.0

**CIHM
Microfiche
Series
(Monographs)**

**ICMH
Collection de
microfiches
(monographies)**



Canadian Institute for Historical Microreproductions / Institut canadien de microreproductions historiques

10
11
12
13
14
15
16
17
18
19
20
21
22
23
24
25
26
27
28
29
30

© 1991

Technical and Bibliographic Notes / Notes techniques et bibliographiques

The Institute has attempted to obtain the best original copy available for filming. Features of this copy which may be bibliographically unique, which may alter any of the images in the reproduction, or which may significantly change the usual method of filming, are checked below.

L'Institut a microfilmé le meilleur exemplaire qu'il lui a été possible de se procurer. Les détails de cet exemplaire qui sont peut-être uniques du point de vue bibliographique, qui peuvent modifier une image reproduite, ou qui peuvent exiger une modification dans la méthode normale de filmage sont indiqués ci-dessous.

- Coloured covers/
Couverture de couleur
- Covers damaged/
Couverture endommagée
- Covers restored and/or laminated/
Couverture restaurée et/ou pelliculée
- Cover title missing/
Le titre de couverture manque
- Coloured maps/
Cartes géographiques en couleur
- Coloured ink (i.e. other than blue or black)/
Encre de couleur (i.e. autre que bleue ou noire)
- Coloured plates and/or illustrations/
Planches et/ou illustrations en couleur
- Bound with other material/
Relié avec d'autres documents
- Tight binding may cause shadows or distortion
along interior margin/
La reliure serrée peut causer de l'ombre ou de la
distorsion le long de la marge intérieure
- Blank leaves added during restoration may appear
within the text. Whenever possible, these have
been omitted from filming/
Il se peut que certaines pages blanches ajoutées
lors d'une restauration apparaissent dans le texte,
mais, lorsque cela était possible, ces pages n'ont
pas été filmées.
- Additional comments:
Commentaires supplémentaires:

- Coloured pages/
Pages de couleur
- Pages damaged/
Pages endommagées
- Pages restored and/or laminated/
Pages restaurées et/ou pelliculées
- Pages discoloured, stained or foxed/
Pages décolorées, tachetées ou piquées
- Pages detached/
Pages détachées
- Showthrough/
Transparence
- Quality of print varies/
Qualité inégale de l'impression
- Continuous pagination/
Pagination continue
- Includes index(es)/
Comprend un (des) index
- Title on header taken from: /
Le titre de l'en-tête provient:
- Title page of issue/
Page de titre de la livraison
- Caption of issue/
Titre de départ de la livraison
- Masthead/
Générique (périodiques) de la livraison

This item is filmed at the reduction ratio checked below/
Ce document est filmé au taux de réduction indiqué ci-dessous.

10X	14X	18X	22X	26X	30X	
				J		
	12X	16X	20X	24X	28X	32X

The copy filmed here has been reproduced thanks to the generosity of:

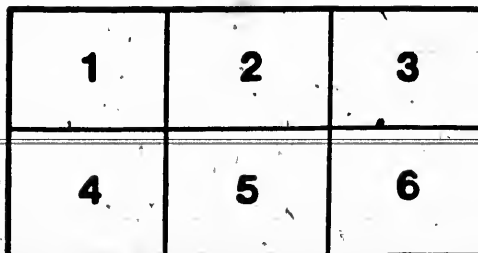
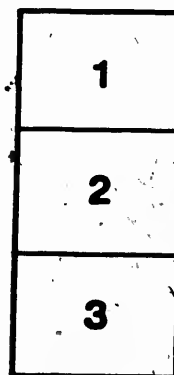
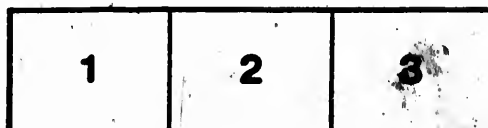
Société du Musée
du Séminaire de Québec

The images appearing here are the best quality possible considering the condition and legibility of the original copy and in keeping with the filming contract specifications.

Original copies in printed paper covers are filmed beginning with the front cover and ending on the last page with a printed or illustrated impression, or the back cover when appropriate. All other original copies are filmed beginning on the first page with a printed or illustrated impression, and ending on the last page with a printed or illustrated impression.

The last recorded frame on each microfiche shall contain the symbol \rightarrow (meaning "CONTINUED"), or the symbol ∇ (meaning "END"), whichever applies.

Maps, plates, charts, etc., may be filmed at different reduction ratios. Those too large to be entirely included in one exposure are filmed beginning in the upper left hand corner, left to right and top to bottom, as many frames as required. The following diagrams illustrate the method:



L'exemplaire filmé fut reproduit grâce à la générosité de:

Société du Musée
du Séminaire de Québec

Les images suivantes ont été reproduites avec le plus grand soin, compte tenu de la condition et de la netteté de l'exemplaire filmé, et en conformité avec les conditions du contrat de filmage.

Les exemplaires originaux dont la couverture en papier est imprimée sont filmés en commençant par le premier plat et en terminant soit par la dernière page qui comporte une empreinte d'impression ou d'illustration, soit par le second plat, selon le cas. Tous les autres exemplaires originaux sont filmés en commençant par la première page qui comporte une empreinte d'impression ou d'illustration et en terminant par la dernière page qui comporte une telle empreinte.

Un des symboles suivants apparaîtra sur la dernière image de chaque microfiche, selon le cas: le symbole \rightarrow signifie "A SUIVRE", le symbole ∇ signifie "FIN".

Les cartes, planches, tableaux, etc., peuvent être filmés à des taux de réduction différents. Lorsque le document est trop grand pour être reproduit en un seul cliché, il est filmé à partir de l'angle supérieur gauche, de gauche à droite, et de haut en bas, en prenant le nombre d'images nécessaire. Les diagrammes suivants illustrent la méthode.

276
Géographie 124

RAMSAY'S

Scripture Atlas for Schools,

CONTAINING

SIX COLOURED MAPS,

ILLUSTRATIVE OF THE GEOGRAPHY OF SACRED HISTORY

1. COUNTRIES OF THE EAST.
2. JOURNEYINGS OF THE ISRAELITES.
3. JEWISH PALESTINE.
4. ANCIENT JERUSALEM.
5. ROMAN PALESTINE.
6. TRAVELS OF ST PAUL.

PRICE FOURPENCE.

**MONTREAL:
HEW RAMSAY.**

QUEBEC: P. MICALLEF. BOSTON: A. BRIDGMAN. KINGSTON: J. DUFFY. TORONTO: H. ARMOUR & CO.
LONDON (C. W.): J. M. GRAHAM.



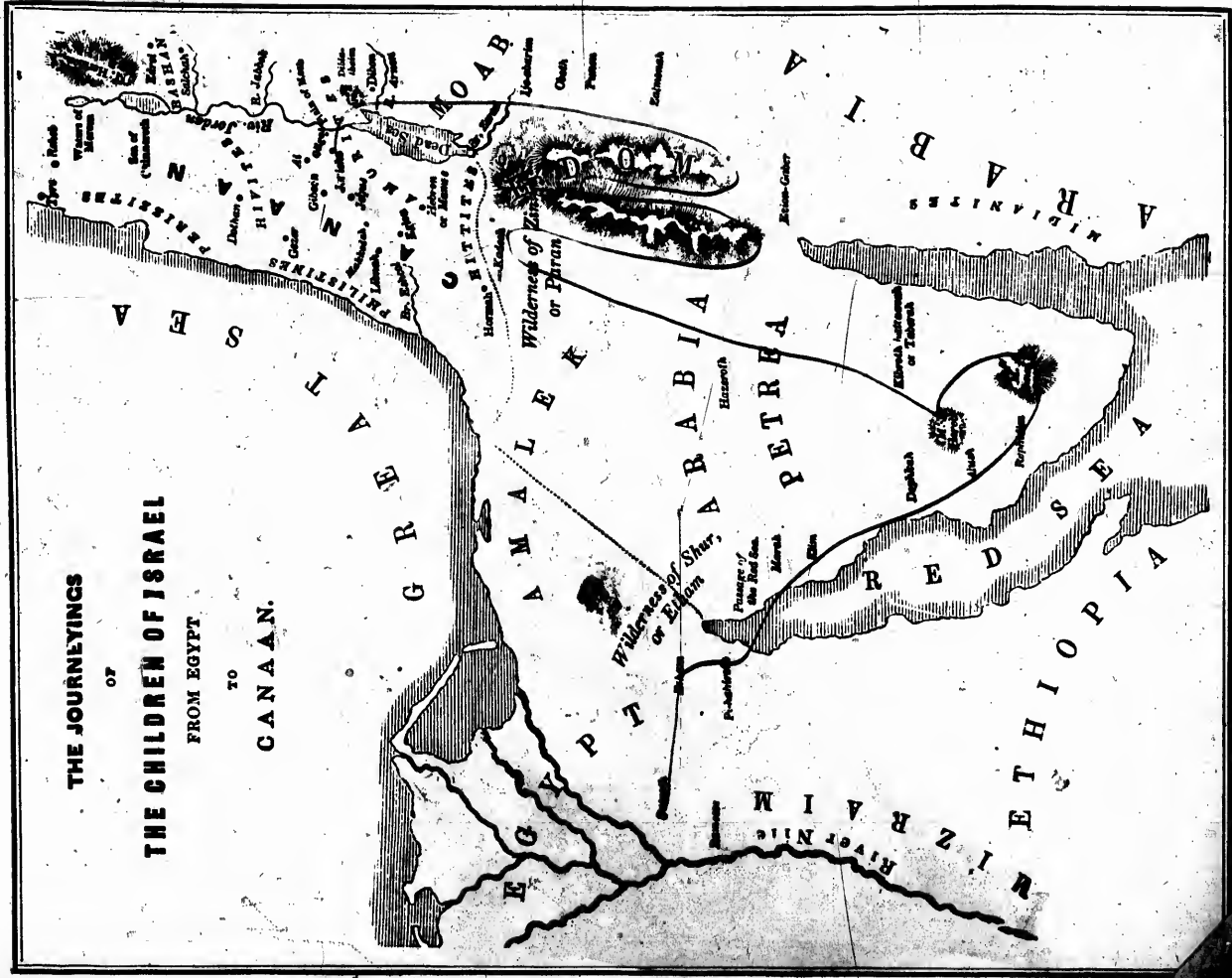
Bibliothèque
Le Séminaire
8, rue de l'Université
Québec 4, QUEB.







THE JOURNEYINGS
 OF
 THE CHILDREN OF ISRAEL
 FROM EGYPT
 TO
 CANAAN.





A
MAP OF
JEWISH PALESTINE

A
MAP OF
JEWISH PALESTINE
 ILLUSTRATIVE
 of
OLD TESTAMENT
HISTORY.

MOUNTAINS.

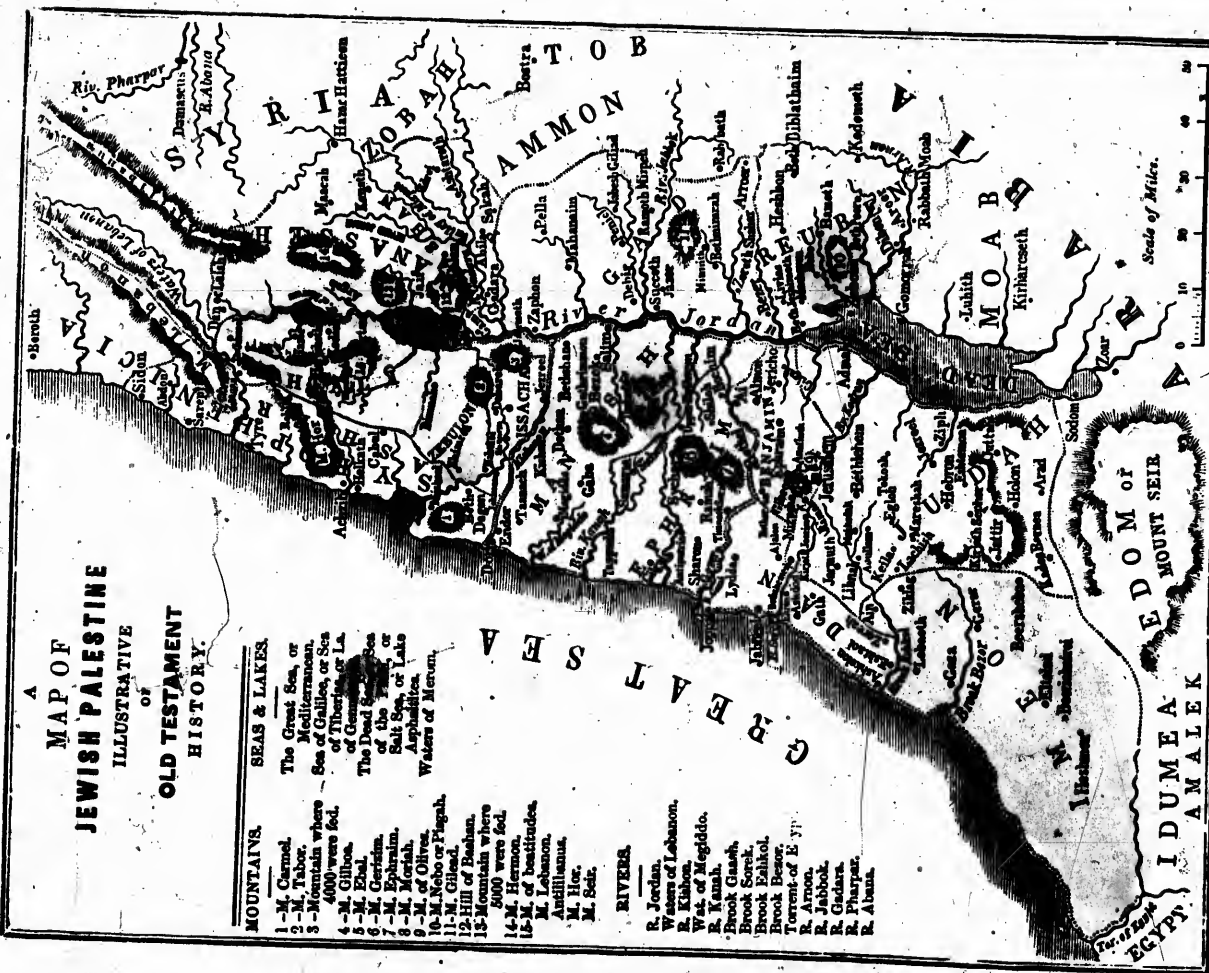
1. M. Carmel.
2. M. Tabor.
3. M. Hermon where 4000 were fed.
4. M. Gilboa.
5. M. Ebal.
6. M. Gerizim.
7. M. Ephraim.
8. M. of Moriah.
9. M. of Olivet.
10. M. Nebo or Pisgah.
11. M. Gilbad.
12. Hill of Bashan.
13. M. Hermon where 2000 were fed.
14. M. of Sinitadites.
15. M. Lebanon.
16. M. of Sinitadites.
17. M. Hermon.
18. M. of Sinitadites.
19. M. Hermon.
20. M. of Sinitadites.

SEAS & LAKES.

- The Great Sea, or Mediterranean.
 Sea of Gallilee, or Sea of Tiberias, or Sea of Gennesareth.
 The Dead Water.
 Salt Sea, or Lake Asphaltites.
 Waters of Mercur.

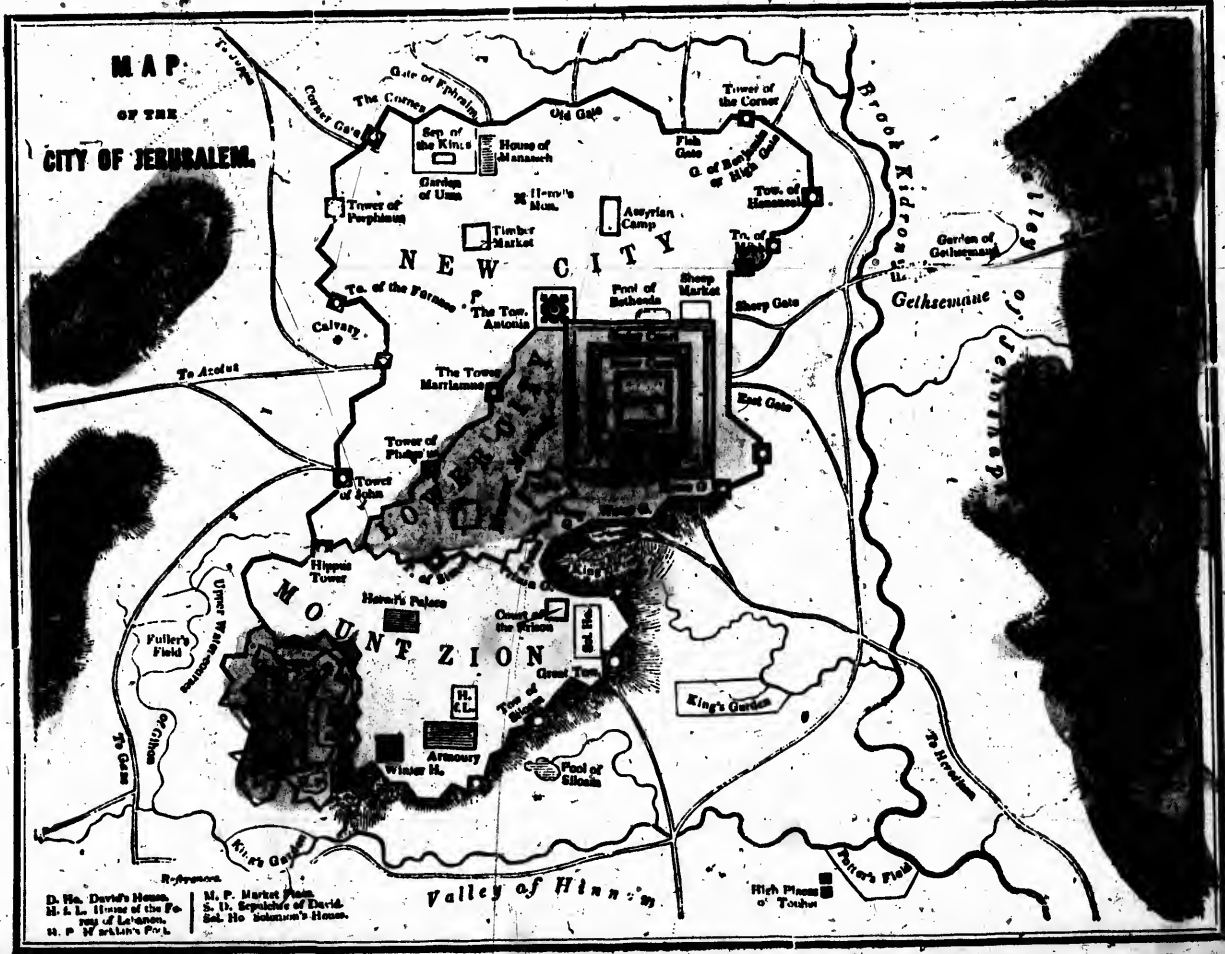
RIVERS.

1. Jordan.
2. Euphrates.
3. Tigris.
4. Euphrates.
5. Euphrates.
6. Euphrates.
7. Euphrates.
8. Euphrates.
9. Euphrates.
10. Euphrates.
11. Euphrates.
12. Euphrates.
13. Euphrates.
14. Euphrates.
15. Euphrates.
16. Euphrates.
17. Euphrates.
18. Euphrates.
19. Euphrates.
20. Euphrates.

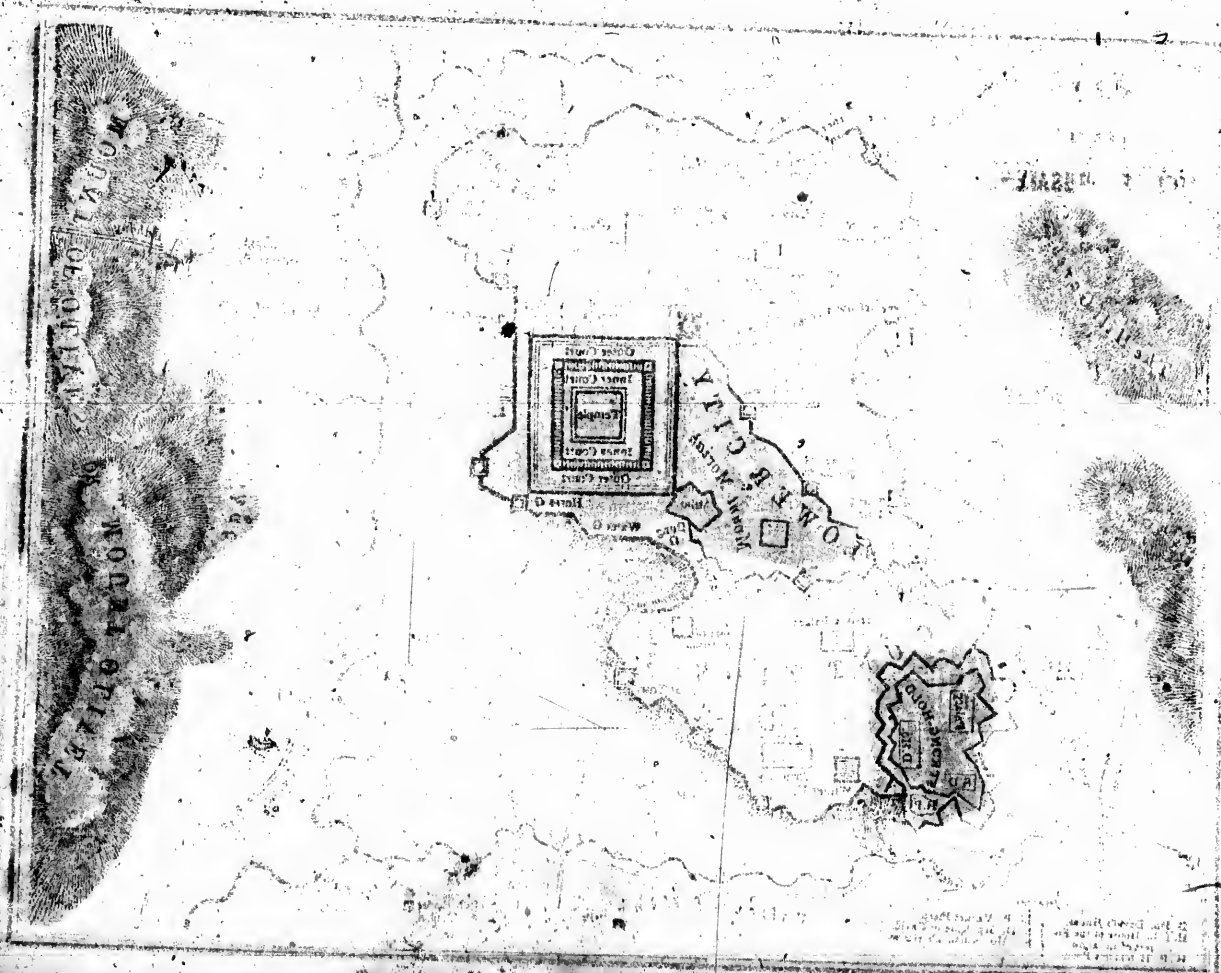




MAP
OF THE
CITY OF JERUSALEM.



D. Ho. David's House
 H. & L. House of the Fathers of Lebanon.
 St. P. Werthe's Post.
 M. P. Market Place.
 St. H. Sepulchre of David.
 Sol. Ho. Solomon's House.



A
 MAP OF
 FORT MIFFLIN AND THE TOWN OF MIFFLINTOWN

A
MAP OF
ROMAN PALESTINE
 ILLUSTRATIVE
 OF
NEW TESTAMENT
HISTORY.

MOUNTAINS.

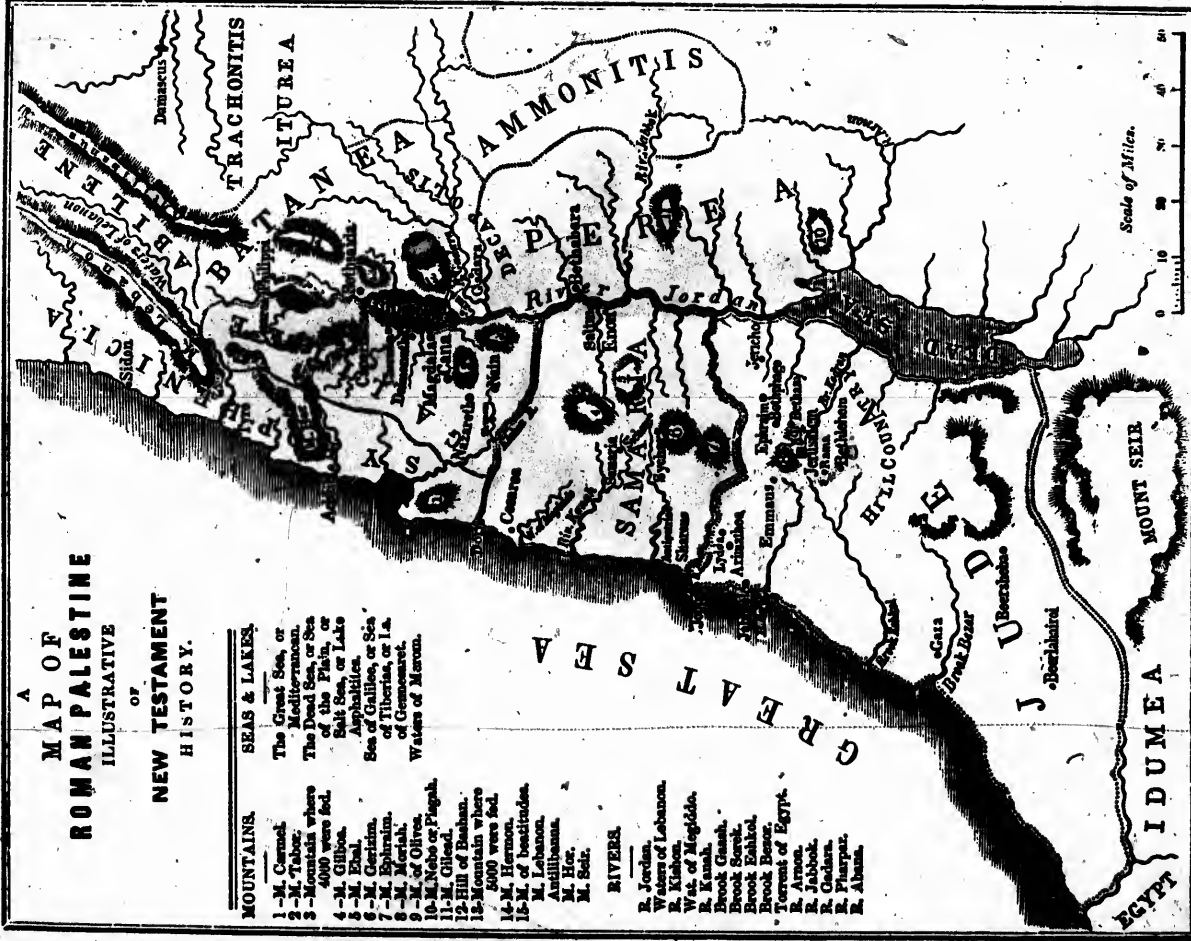
- 1-M. Carmel.
- 2-M. Tabor.
- 3--Mountain where 4000 were fed.
- 4-M. Gilboa.
- 5-M. Ebal.
- 6-M. Gerizim.
- 7-M. Ephraim.
- 8-M. Acriah.
- 9-M. of Olivet.
- 10-M. of Sion or Pnyca.
- 11-M. of Bethan.
- 12-Hill of Beth.
- 13-M. of Sion where 4000 were fed.
- 14-M. Hermon.
- 15-M. of beatitudes.
- M. Lebanon.
- Antilibanus.
- M. Hor.
- M. Seir.

RIVERS.

- R. Jordan.
- Waters of Lebanon.
- R. Kishon.
- W. of Megiddo.
- R. Kishon.
- Brook Gash.
- Brook Esbik.
- Brook Beset.
- Torrent of Egypt.
- R. Arnon.
- R. Jabok.
- R. Gader.
- R. Pharpar.
- R. Abana.

SEAS & LAKES.

- The Great Sea, or Mediterranean.
- The Dead Sea, or Sea of the Plain, or Salt Sea, or Lake Asphaltites.
- Sea of Galilee, or Sea of Tibertan, or I. a. Waters of Meron.





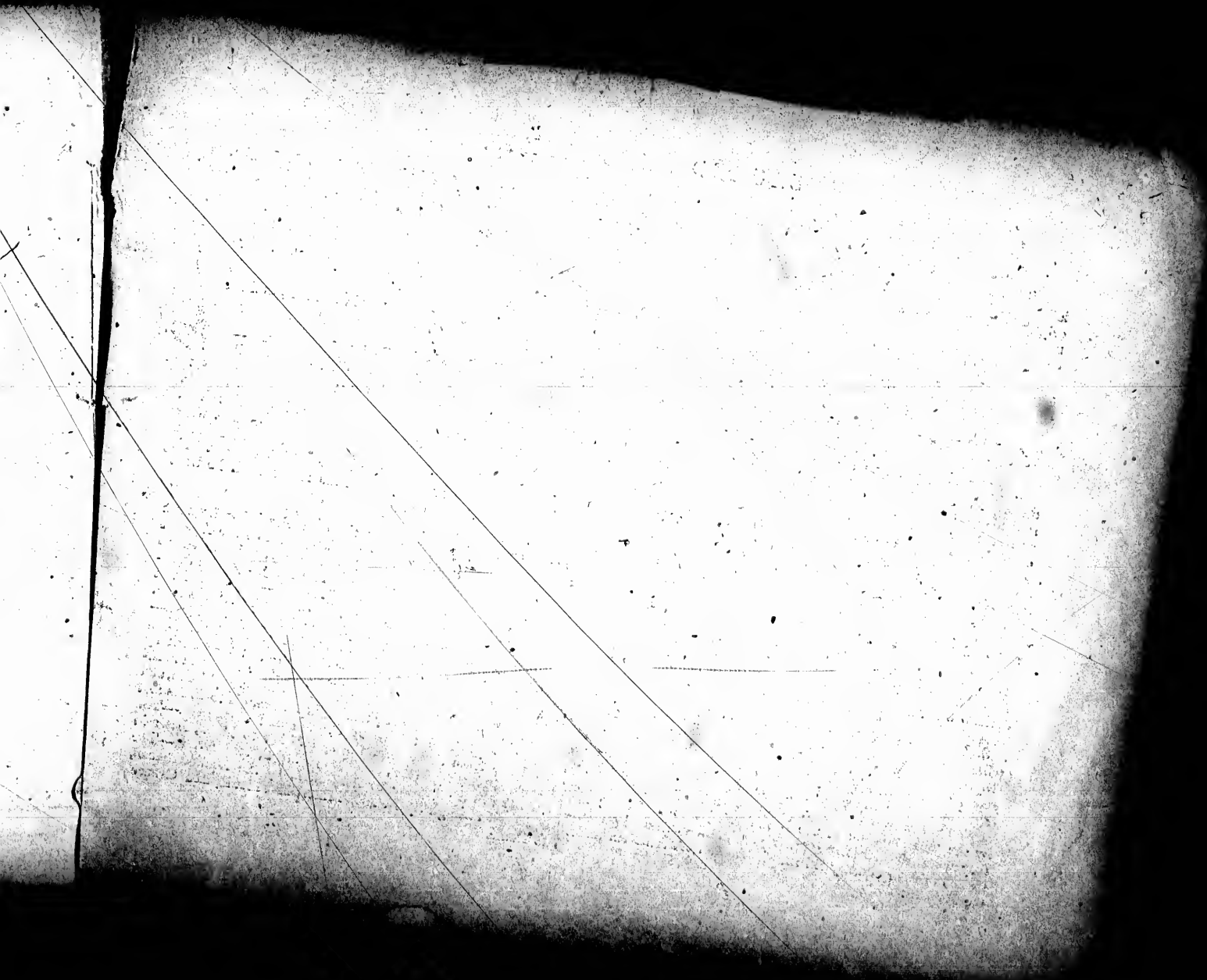
QUEEN
The
A
P
SIC
M
A
First
to
back
Act

ST. PAUL'S TRAVELS.



Note.—Paul made seven journeys, three of which only (4, 5 and 6) are traced on the Map. The First was from Jerusalem to Damascus, Arabia, and back again.—The Second was from Jerusalem to Tarvus, and back.—The Third was from Jerusalem, through Antioch, Cyprus, and Derbe, and back.—The Seventh was from Rome to Jerusalem, by the Mediterranean, and back through Syria, Asia Minor, Macedonia, and Greece, to Rome.





SACRED GEOGRAPHY.

1. In the first Map of this series will be found a representation of that part of the world which was first occupied by man. The situation of Eden is unknown; but the place assigned to it here, is one which, more than any other, answers to the description given of it in Scripture. Babylon and Nineveh were the first great cities in the world, and the Babylonian empire, or Chaldea, including Assyria, was the first great empire. (Dan. ii. 38.) After the Babylonian arose that of the Persians and Medes, under Cyrus and Darius. Armenia was the place from which the world was peopled after the flood, the Ark having rested on Ararat. Syria was also a powerful kingdom. In it lay the Holy Land, which God gave to the descendants of Jacob.

2. The Journeys of the Children of Israel is the subject of the second Map. Jacob, or Israel, who sojourned in Canaan, sent his sons to Egypt for corn. There Joseph relieved them and sent for all his family to live with him. On Joseph's death, the Israelites were subjected to a most cruel bondage, until God plagued the Egyptians, and brought out the people under Moses. Journeying from Rameses they passed through the Red Sea, and travelled southward to Mount Sinai, and thence to Kadesh, where they sent spies into Canaan as far as Rehob. They returned bringing a false report of the land; and God was so much displeased with the murmuring of the people, that he sent them back to wander in the wilderness of Edom, until all their old men died. After that, God led them into Canaan under Joshua. They crossed the Jordan, and Jericho was the first city which they destroyed.

3. Palestine (No. 3.) was divided by Joshua among the tribes of Israel, after the idolatrous inhabitants had been destroyed or subdued. Jerusalem was chosen by David as the capital; but on the revolt of the ten tribes after Solomon's death, Samaria became the capital of the revolters, until they were carried away into captivity. Jerusalem itself was destroyed by the Babylonians, and the Jews carried into captivity; but they were restored after seventy years, and continued in possession of their country till the destruction of Jerusalem under the Romans.

4. Jerusalem, the capital of Judea and the Holy Land, was built on four hills, Mount Zion and Mount Moriah being the most celebrated. Mount Zion was strongly fortified, and the Temple was built on Mount Moriah, where Abraham had formerly offered a ram instead of Isaac. The Mount of Olives lay on the east of Jerusalem, and the brook Kedron flowed between. Jerusalem was first wholly subdued by David. It suffered many sieges afterwards; but during its siege by Titus the inhabitants suffered the most awful calamities, and the city itself was utterly destroyed.

5. Palestine (No. 5.) was divided into five provinces—Judea, Samaria, Galilee, Batanea, and Perea. Zacharias and Elizabeth, the parents of John the Baptist, lived in the hill-country of Judea. Mary, the mother of Jesus, in Nazareth of Galilee. They, however, belonged to Bethlehem, and it was there that Jesus was born. Judea, Samaria, and especially Galilee, were favoured with the preaching and miracles of Jesus. The sea of Galilee also was frequently the scene of his labours. At Jerusalem he was crucified, but after his resurrection he went before his disciples into Galilee.

6. The sixth Map represents the countries lying between Jerusalem and Rome, the scene of the labours of the Apostle Paul. There were seven journeys altogether, three of which (4, 5 and 6) are traced on the Map. The *First* was from Jerusalem to Damascus, Arabia, and back again.—The *Second* was from Jerusalem to Tarsus, and back.—The *Third* was from Jerusalem, through Antioch, Cyprus, and Derbe, and back.—The *Fourth* was from Jerusalem, through Antioch, Asia Minor, Macedonia, and Greece, to Athens and Corinth; then back by Ephesus to Cesarea and Jerusalem.—The *Fifth* was from Jerusalem, through Antioch, Asia Minor, Macedonia, Illyricum, and Greece, to Corinth, and back through Macedonia to Troas and Miletus, and from thence to Cesarea and Jerusalem.—The *Sixth* was from Jerusalem, through Sidon to Myra, Lasea in Crete, Melita, Syracuse, Rhegium, Puteoli, and Rome.—The *Seventh* was from Rome to Jerusalem, by the Mediterranean, and back through Syria, Asia Minor, Macedonia, and Greece to Rome.



