

**CIHM
Microfiche
Series
(Monographs)**

**ICMH
Collection de
microfiches
(monographies)**



Canadian Institute for Historical Microreproductions / Institut canadien de microreproductions historiques

© 2000

Technical and Bibliographic Notes / Notes techniques et bibliographiques

The Institute has attempted to obtain the best original copy available for filming. Features of this copy which may be bibliographically unique, which may alter any of the images in the reproduction, or which may significantly change the usual method of filming are checked below.

- Coloured covers / Couverture de couleur
- Covers damaged / Couverture endommagée
- Covers restored and/or laminated / Couverture restaurée et/ou pelliculée
- Cover title missing / Le titre de couverture manque
- Coloured maps / Cartes géographiques en couleur
- Coloured ink (i.e. other than blue or black) / Encre de couleur (i.e. autre que bleue ou noire)
- Coloured plates and/or illustrations / Planches et/ou illustrations en couleur
- Bound with other material / Relié avec d'autres documents
- Only edition available / Seule édition disponible
- Tight binding may cause shadows or distortion along interior margin / La reliure serrée peut causer de l'ombre ou de la distorsion le long de la marge intérieure.
- Blank leaves added during restorations may appear within the text. Whenever possible, these have been omitted from filming / Il se peut que certaines pages blanches ajoutées lors d'une restauration apparaissent dans le texte, mais, lorsque cela était possible, ces pages n'ont pas été filmées.
- Additional comments / Commentaires supplémentaires:

L'Institut a microfilmé le meilleur exemplaire qu'il lui a été possible de se procurer. Les détails de cet exemplaire qui sont peut-être uniques du point de vue bibliographique, qui peuvent modifier une image reproduite, ou qui peuvent exiger une modification dans la méthode normale de filmage sont indiqués ci-dessous.

- Coloured pages / Pages de couleur
- Pages damaged / Pages endommagées
- Pages restored and/or laminated / Pages restaurées et/ou pelliculées
- Pages tilted, stained or foxed / Pages décolorées, tachetées ou piquées
- Pages detached / Pages détachées
- Showthrough / Transparence
- Quality of print varies / Qualité Inégale de l'impression
- Includes supplementary material / Comprend du matériel supplémentaire
- Pages wholly or partially obscured by errata slips, tissues, etc., have been refilmed to ensure the best possible image / Les pages totalement ou partiellement obscurcies par un feuillet d'errata, une pelure, etc., ont été filmées à nouveau de façon à obtenir la meilleure image possible.
- Opposing pages with varying colouration or discolourations are filmed twice to ensure the best possible image / Les pages s'opposant ayant des colorations variables ou des décolorations sont filmées deux fois afin d'obtenir la meilleure image possible.

This item is filmed at the reduction ratio checked below /
Ce document est filmé au taux de réduction indiqué ci-dessous.

	10x		14x		18x		22x		26x		30x	
					✓							
	12x		16x		20x		24x		28x		32x	

The copy filmed here has been reproduced thanks to the generosity of:

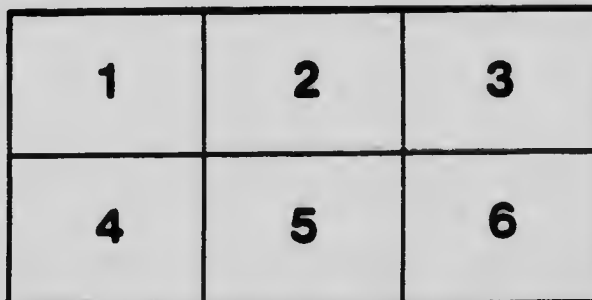
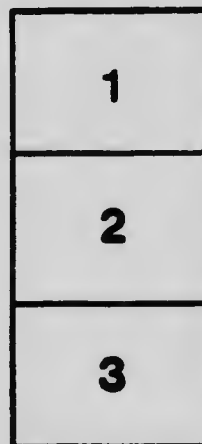
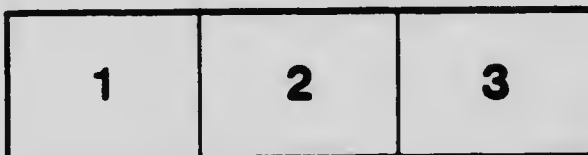
Archives of Ontario
Toronto

The images appearing here are the best quality possible considering the condition and legibility of the original copy and in keeping with the filming contract specifications.

Original copies in printed paper covers are filmed beginning with the front cover and ending on the last page with a printed or illustrated impression, or the back cover when appropriate. All other original copies are filmed beginning on the first page with a printed or illustrated impression, and ending on the last page with a printed or illustrated impression.

The last recorded frame on each microfiche shall contain the symbol \rightarrow (meaning "CONTINUED"), or the symbol ∇ (meaning "END"), whichever applies.

Maps, plates, charts, etc., may be filmed at different reduction ratios. Those too large to be entirely included in one exposure are filmed beginning in the upper left hand corner, left to right and top to bottom, as many frames as required. The following diagrams illustrate the method:



L'exemplaire filmé fut reproduit grâce à la générosité de:

Archives publiques de l'Ontario
Toronto

Les images suivantes ont été reproduites avec le plus grand soin, compte tenu de la condition et de la netteté de l'exemplaire filmé, et en conformité avec les conditions du contrat de filmage.

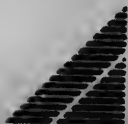
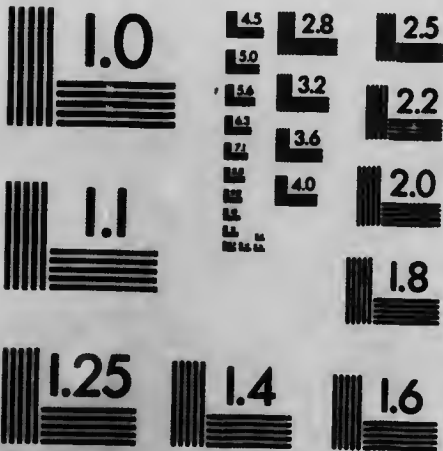
Les exemplaires originaux dont le couvertures en papier est imprimée sont filmés en commençant par le premier plat et en terminant soit par la dernière page qui comporte une empreinte d'impression ou d'illustration, soit par le second plat, selon le cas. Tous les autres exemplaires originaux sont filmés en commençant par le première page qui comporte une empreinte d'impression ou d'illustration et en terminant par la dernière page qui comporte une telle empreinte.

Un des symboles suivants apparaîtra sur la dernière image de chaque microfiche, selon le cas: le symbole \rightarrow signifie "A SUIVRE", le symbole ∇ signifie "FIN".

Les cartes, planches, tableaux, etc., peuvent être filmés à des taux de réduction différents. Lorsque le document est trop grand pour être reproduit en un seul cliché, il est filmé à partir de l'angle supérieur gauche, de gauche à droite, et de haut en bas, en prenant le nombre d'images nécessaire. Les diagrammes suivants illustrent la méthode.

MICROCOPY RESOLUTION TEST CHART

(ANSI and ISO TEST CHART No. 2)



APPLIED IMAGE Inc

1653 East Main Street
Rochester, New York 14609 USA
(716) 482-0300 - Phone
(716) 288-5969 - Fax

1



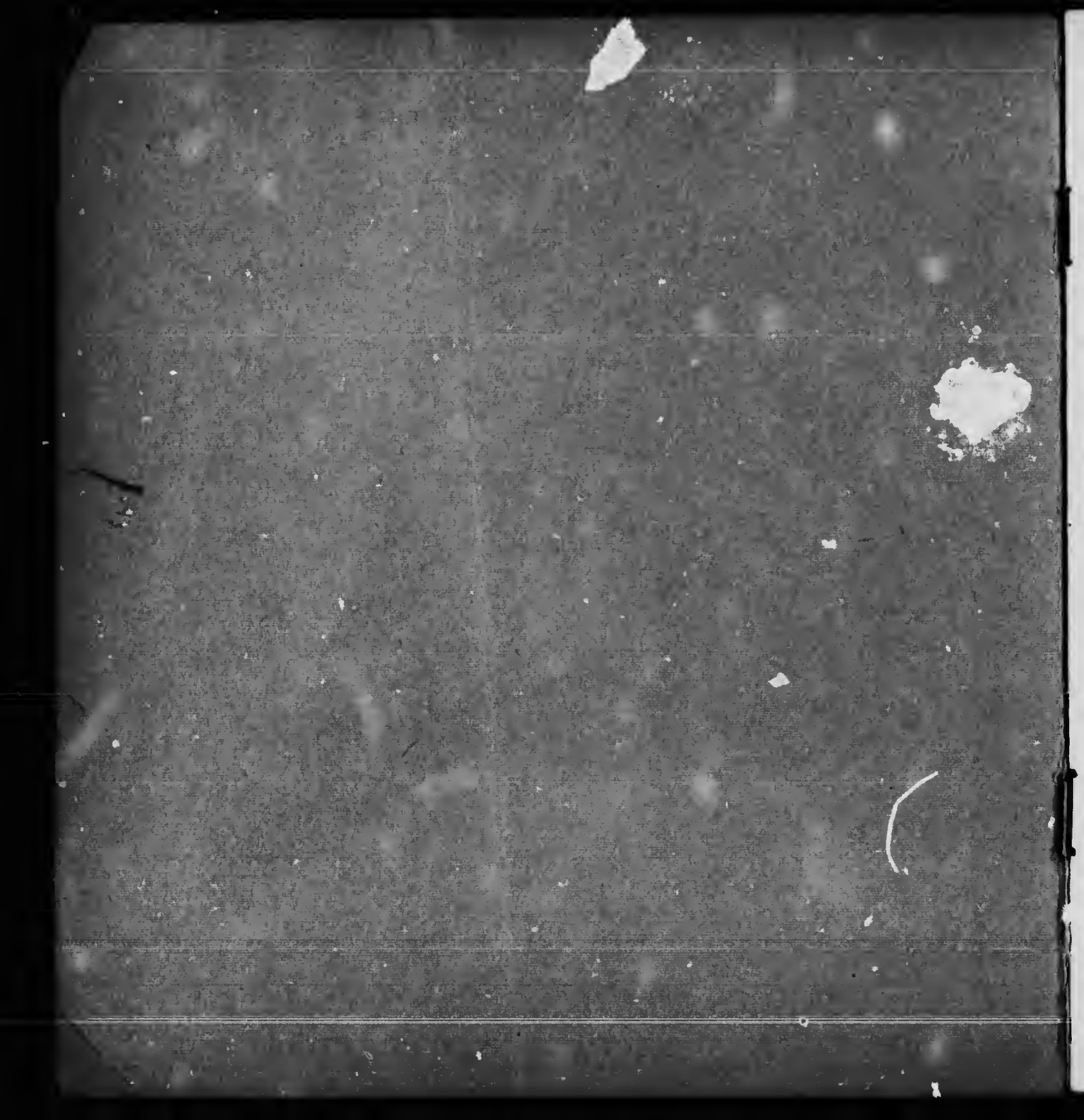
The

1712

Penetanguishene

PENETANGUISHENE, ONTARIO
CANADA

**A Delightful
Summer Resort
among the
Thirty Thousand
Islands of the
Georgian Bay**

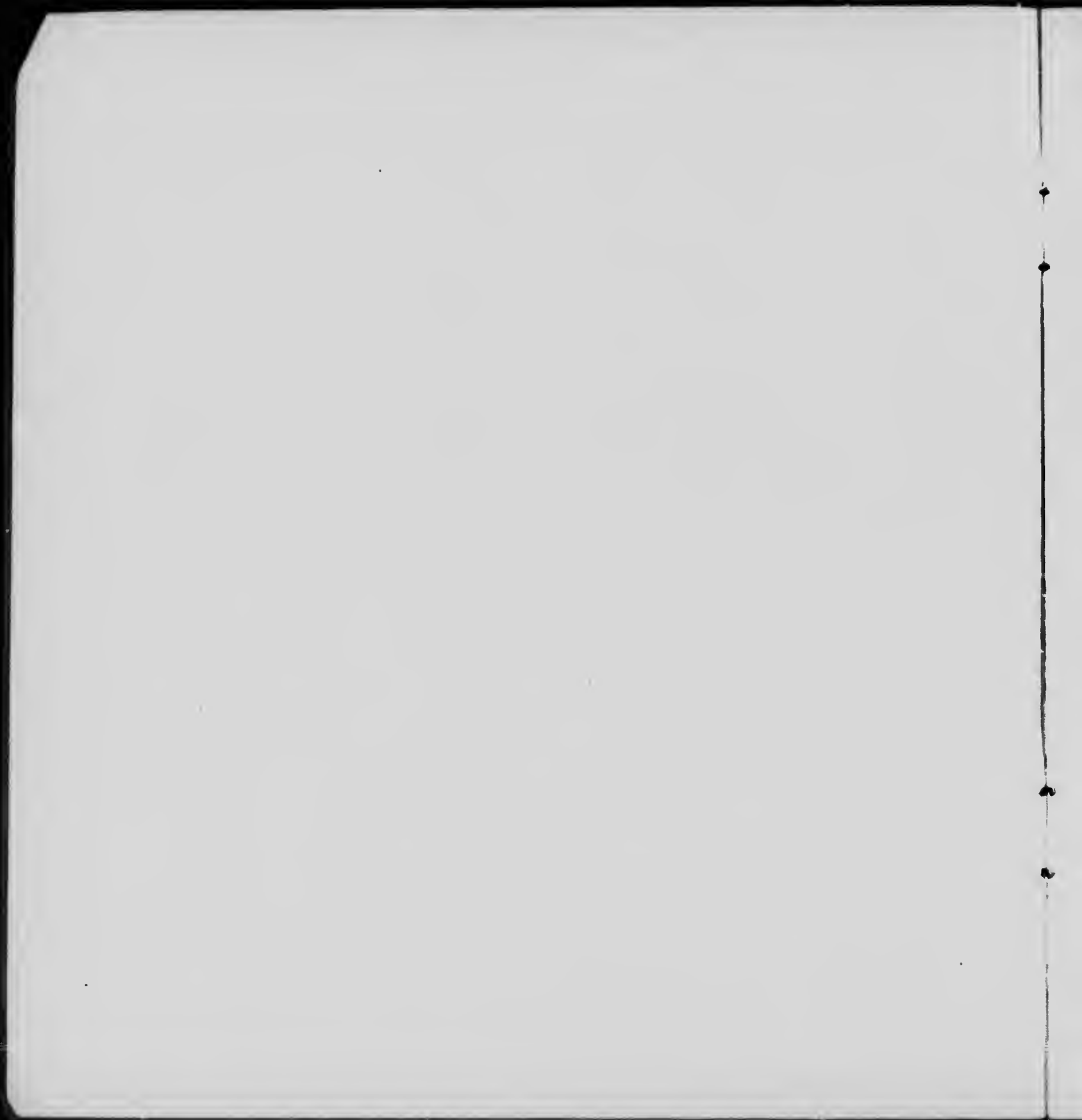


The  enetanguishene



Canada's
Popular
Summer
Hotel

PENETANGUSHENE, ONTARIO, CANADA



A Health Resort

THE bracing air of the Georgian Bay, its high altitude, combined with an abundant supply of purest spring water and ice, have made The Penetanguishene unsurpassed as a health resort.

Malaria, nervous troubles, hay fever, and the ills which make life in the cities unbearable in the warm weather, cannot exist here.

We claim to have the PUREST and BEST drinking water in Canada.



Rotunda

The Situation

The Penetanguishene is picturesquely situated on a high sandy beach overlooking Penetanguishene Harbor, the gateway to the thirty thousand islands of the famed Georgian Bay.



A Paradise for those who seek Location, Service
and Comfort.



A Natural Park

The Penetanguishene occupies the choicest position of all summer hotels on the northern lakes. It is the centre of a natural park containing about fifteen acres well laid out, beautifully wooded, with delightful walks, drives and shady nooks.



The Grounds

The Penetanguishene is distinguished for its grounds, having a frontage of half a mile of water front, laid out with bowling and tennis lawns, beautiful walks through the wooded Park, seats, swings, etc., etc.



The Name

The Penetanguishene is named after the historic Town of Penetanguishene, noted as the former site of a British Naval and Military Station in the early days of Canada. Penetanguishene signifies "The Place of the White Rolling Sand."



The Appointments

The Penetanguishene is lighted with electricity throughout. Magnificent dining room, also a special dining room for children and servants. Excellent cuisine. Splendidly appointed sleeping rooms. The bath rooms are provided with hot and cold water. Large and airy halls, broad piazzas and verandahs extend the whole length and width of building, giving ample room for promenading and for the enjoyment of the beauties of the surrounding scenery.

Steam radiators warm the building when necessary. Post, telephone and telegraph facilities.



Main Dining Room

Boating, Bathing, Fishing

Among the advantages always at hand is the delightful sand beach for bathing. Excellent fishing—Bass, Maskinonge and Pickerel; fine boating and good boats (large and small), including pleasure steamers and gasoline yachts, running from Hotel to islands for the accommodation of guests, returning in good time in the evening, the sail, combined with fishing, making a delightful day's outing. The Northern Navigation Co.'s Twin Screw Steamer "Waubic" runs daily trips to Parry Sound through the many Islands of the Georgian Bay. Picturesque drives over good roads; good horses and turnouts close at hand.



Entertainment

The Orchestra renders choice selections daily during lunch hour. In the evening social hops and high-class vocal and instrumental concerts and indoor amusements of various kinds are provided during the season.



Advantages

The aim of the Management is to provide the best that any first-class hotel can give, at the lowest possible rates. No other hotel in the summer resort district offers the same advantages at as low rates.



32 pounder caught 100 yards
from Hotel

Opens

The Penetanguishene opens for the season about the 20th of June. The Management would impress upon intending patrons that the latter part of June and July is the most beautiful weather of the year—no black flies or mosquitoes to mar the pleasure of guests.



Rates

\$2.50 PER DAY and upwards.

\$14.00 per week and upwards, according to location of rooms.

Special rates for families.

In writing for rooms the following particulars should be specified:

1. From what date rooms are required and for how long.
2. Number in party; if any children state their several ages.
3. Number and style of rooms required.

Address

The Penetanguishene Hotel Company

GEO. ROBINSON, Manager

PENETANGUISHENE, ONTARIO, CANADA

To Reach
The Penetanguishene
AND THE
30,000 ISLANDS
OF THE
GEORGIAN BAY

Travel by the



The only direct route to Penetanguishene, where connection is made for all Points on the Inner Channel and Parry Sound, and Points on Lake Huron and the Georgian Bay.

Write for Illustrated Book and further particulars to the following

G. W. VAUX, 917 Merchants Loan and Trust Bldg., Chicago, Ill.
F. P. DWYER, 290 Broadway, New York, N Y.
E. H. BOYNTON, 360 Washington Street, Boston, Mass.
W. ROBINSON, 560 Park Building, Pittsburg, Pa.

W. E. DAVIS
Passenger Traffic Manager
Montreal

G. T. BELL
General Passenger and Ticket Agent
Montreal



