

**CIHM  
Microfiche  
Series  
(Monographs)**

**ICMH  
Collection de  
microfiches  
(monographies)**



**Canadian Institute for Historical Microreproductions / Institut canadien de microreproductions historiques**

**© 1997**

## Technical and Bibliographic Notes / Notes techniques et bibliographiques

The Institute has attempted to obtain the best original copy available for filming. Features of this copy which may be bibliographically unique, which may alter any of the images in the reproduction, or which may significantly change the usual method of filming are checked below.

- ☐ Coloured covers / Couverture de couleur
- ☐ Covers damaged / Couverture endommagée
- ☐ Covers restored and/or laminated / Couverture restaurée et/ou pelliculée
- ☐ Cover title missing / Le titre de couverture manque
- ☐ Coloured maps / Cartes géographiques en couleur
- ☐ Coloured ink (i.e. other than blue or black) / Encre de couleur (i.e. autre que bleue ou noire)
- ☐ Coloured plates and/or illustrations / Planches et/ou illustrations en couleur
- ☐ Bound with other material / Relié avec d'autres documents
- ☐ Only edition available / Seule édition disponible
- ☐ Tight binding may cause shadows or distortion along interior margin / La reliure serrée peut causer de l'ombre ou de la distorsion le long de la marge intérieure.
- ☐ Blank leaves added during restorations may appear within the text. Whenever possible, these have been omitted from filming / Il se peut que certaines pages blanches ajoutées lors d'une restauration apparaissent dans le texte, mais, lorsque cela était possible, ces pages n'ont pas été filmées.
- ☐ Additional comments / Commentaires supplémentaires:

L'Institut a microfilmé le meilleur exemplaire qu'il lui a été possible de se procurer. Les détails de cet exemplaire qui sont peut-être uniques du point de vue bibliographique, qui peuvent modifier une image reproduite, ou qui peuvent exiger une modification dans la méthode normale de filmage sont indiqués ci-dessous.

- ☐ **Cooured pages / Pages de couleur**
- ☒ **Pages damaged / Pages endommagées**
- ☐ **Pages restored and/or laminated / Pages restaurées et/ou pelliculées**
- ☒ **Pages discoloured, stained or foxed / Pages décolorées, tachetées ou piquées**
- ☐ **Pages detached / Pages détachées**
- ☒ **Showthrough / Transparence**
- ☒ **Quality of print varies / Qualité inégale de l'impression**
- ☐ **Includes supplementary material / Comprend du matériel supplémentaire**
- ☐ **Pages wholly or partially obscured by errata slips, tissues, etc., have been refilmed to ensure the best possible image / Les pages totalement ou partiellement obscurcies par un feuillet d'errata, une pelure, etc., ont été filmées à nouveau de façon à obtenir la meilleure image possible.**
- ☐ **Opposing pages with varying colouration or discolourations are filmed twice to ensure the best possible image / Les pages s'opposant ayant des colorations variables ou des décolorations sont filmées deux fois afin d'obtenir la meilleure image possible.**

**This item is filmed at the reduction ratio checked below /  
Ce document est filmé au taux de réduction indiqué ci-dessous.**

A horizontal number line with 16 equal segments. The segments are labeled with algebraic expressions at the top and bottom. The top labels are 10x, 14x, 18x, 22x, 26x, and 30x. The bottom labels are 12x, 16x, 20x, 24x, 28x, and 32x. A checkmark is placed in the 10th segment from the left, which is the segment between 22x and 24x.

The copy filmed here has been reproduced thanks to the generosity of:

Library  
Agriculture Canada

The images appearing here are the best quality possible considering the condition and legibility of the original copy and in keeping with the filming contract specifications.

Original copies in printed paper covers are filmed beginning with the front cover and ending on the last page with a printed or illustrated impression, or the back cover when appropriate. All other original copies are filmed beginning on the first page with a printed or illustrated impression, and ending on the last page with a printed or illustrated impression.

The last recorded frame on each microfiche sheet contains the symbol  $\rightarrow$  (meaning "CONTINUED"), or the symbol  $\nabla$  (meaning "END"), whichever applies.

Maps, plates, charts, etc., may be filmed at different reduction ratios. Those too large to be entirely included in one exposure are filmed beginning in the upper left hand corner, left to right and top to bottom, as many frames as required. The following diagrams illustrate the method:

1	2	3
---	---	---

1	2
4	5

L'exemplaire filmé fut reproduit grâce à la générosité de:

Bibliothèque  
Agriculture Canada

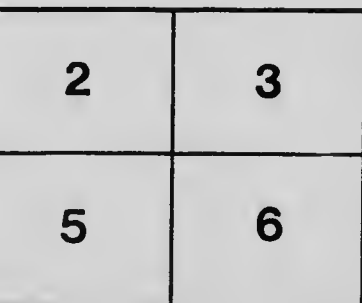
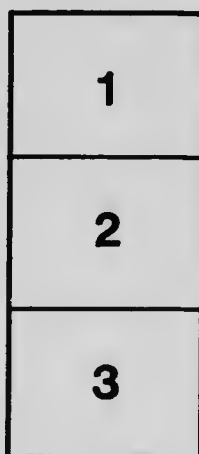
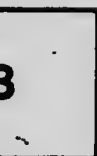
Les images suivantes ont été reproduites avec le plus grand soin, compte tenu de la condition et de la netteté de l'exemplaire filmé, et en conformité avec les conditions du contrat de filmage.

Les exemplaires originaux dont la couverture en papier est imprimée sont filmés en commençant par le premier plat et en terminant soit par la dernière page qui comporte une empreinte d'impression ou d'illustration, soit par le second plat, selon le cas. Tous les autres exemplaires originaux sont filmés en commençant par la première page qui comporte une empreinte d'impression ou d'illustration et en terminant par la dernière page qui comporte une telle empreinte.

Un des symboles suivants apparaîtra sur la dernière image de chaque microfiche, selon le cas: le symbole  $\rightarrow$  signifie "A SUIVRE", le symbole  $\nabla$  signifie "FIN".

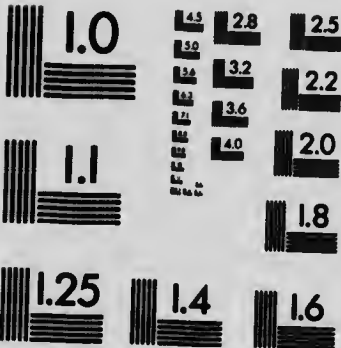
Les cartes, planches, tableaux, etc., peuvent être filmés à des taux de réduction différents.

Lorsque le document est trop grand pour être reproduit en un seul cliché, il est filmé à partir de l'angle supérieur gauche, de gauche à droite, et de haut en bas, en prenant le nombre d'images nécessaire. Les diagrammes suivants illustrent la méthode.



# MICROCOPY RESOLUTION TEST CHART

(ANSI and ISO TEST CHART No. 2)



**APPLIED IMAGE Inc**

1653 East Main Street  
Rochester, New York 14609 USA  
(716) 482 - 0300 - Phone  
(716) 288 - 5989 - Fax

9/

# PROGRAMME



## SHORT COURSE

---

IN

---

# FRUIT-GROWING

Jan. 26th to Feb. 5th,  
1909.



ONTARIO AGRICULTURAL COLLEGE,  
GUELPH, CANADA.



### Notice Re Reduced Rates on Railways.

We have made arrangements with the Grand Trunk and Canadian Pacific Railways for reduced rates to our Short Courses. In buying your ticket for Guelph, ask for a Single Fare First Class Ticket, and secure from the ticket agent a Standard Certificate. This Certificate, when signed at the College, will entitle you to reduced rate for the return trip.

**DON'T**

throw this Programme away. If you are not interested, yourself pass it on to some other young man. At some future time he may thank you. We thank you now.

634.07  
.059

# **PROGRAMME.**

## **Tuesday, January 26th.**

- 9.00 a.m.—Locations, Sites and Soils for Fruit Growing.  
HAROLD JONES, Maitland ;  
J. L. HILBORN, Leamington.  
1.30 p.m.—Drainage. - - - W. H. DAY, O. A. C.  
3.00 p.m.—Preparation of Land for Fruit.  
HAROLD JONES, J. L. HILBORN.

## **Wednesday, January 27th.**

- 9.00 a.m.—Selection of Nursery Stock. J. W. CROW, O.A.C.  
10.30 a.m.—Laying out Plantations. - - HAROLD JONES.  
1.30 p.m.—Soil Moisture. - - - W. H. DAY, O. A. C.  
3.00 p.m.—Planting and care of Young Orchards.  
HAROLD JONES.

## **Thursday, January 28th.**

- 9.00 a.m.—Propagation of Fruit Trees and Plants.  
W. T. MACOUN, Horticulturist,  
Central Experimental Farm, Ottawa.  
10.30 a.m.—Strawberries for the Canning Factory.  
S. H. RITTENHOUSE, Jordan.  
1.30 p.m.—Judging Fruit. - - - W. T. MACOUN.  
3.00 p.m.—Fertilizers for Fruit Plantations.  
R. HARCOURT, O.A.C.

## **Friday, January 29th.**

- 9.00 a.m.—Pruning. - - - W. T. MACOUN.  
10.30 a.m.—Commercial Pear Culture. - J. E. ORR, Fruitland.  
1.30 p.m.—Top-working. - - - W. T. MACOUN.  
3.00 p.m.—Fertilizers. - - - R. HARCOURT.

## **Saturday, January 30th.**

- 9.00 a.m.—Management of Bearing Orchards.  
H. S. PEART, Jordan Harbor.  
10.30 a.m.—Question Box.

## **Monday, February 1st.**

- 1.30 p.m.—Insects Injurious to Fruits. - T. D. JARVIS, O.A.C.  
3.00 p.m.—Orchard Diseases. - - - L. CAESAR, O.A.C.

## **Tuesday, February 2nd.**

- 9.00 a.m.—General Conference on the Preparation and Application of Spraying Materials. The important fungicides and insecticides will be prepared on a commercial scale. Demonstrations will be conducted by experts and the best informed men in the Province will contribute to the experience meeting.

### **Wednesday, February 3rd.**

9.00 a.m.—Conference on Varieties Worth Growing. The best information available on this subject will be presented by men of experience.

10.30 a.m.—Thinning Fruit. - J. GILBERTSON, Simcoe.  
WM. H. FRENCH, Oshawa.

1.30 p.m.—Conference on Box and Barrel Packing. Demonstrations of proper and improper methods, conducted by A. McNeil, Chief, Fruit Division, Ottawa, with the assistance of other experts.

### **Thursday, February 4th.**

9.00 a.m.—The Fruit Crop of 1908 : What became of it, with practical observations by growers, shippers, dealers, and inspectors regarding difficulties encountered.

1.30 p.m.—Experiments with Long Distance Shipment of Tender Fruits. - - - J. B. REYNOLDS, O. A. C.

3.00 p.m.—Cold Storage for the Fruit Grower.  
J. A. RUDDICK,  
Dairy and Cold Storage Commissioner, Ottawa.

### **Friday, February 5th.**

9.00 a.m.—Conference on Co-operation. A thorough discussion of the present status and future possibilities of co-operative work in Ontario.

Managers of Co-operative Associations, including J. E. Johnson, Simcoe ; R. Thompson, St. Catharines ; D. Johnson, Forest ; Elmer Lick, Oshawa ; and J. G. Mitchell, Clarksburg ; and A. W. Peart, Burlington, will be assisted by such authorities as W. L. Smith, Toronto ; A. McNeil, Ottawa, and P. W. Hodgetts, Toronto.

The phases of co-operation discussed will be :

1. Does it Pay ?
2. Forms of Organization.
3. Systems of Management.
4. Selling Methods.
5. The Next Step.

The evenings will be devoted to special discussions and to addresses by prominent speakers. Illustrated lectures on "Home and Rural Improvement," by H. L. Hutt ; and on "Insect Enemies," by T. D. Jarvis, will be included. Other special addresses are "Commercial Orchardng," by A. McNeil ; "Apple Cankers," by R. M. Winslow, Picton, Ont. John Craig, Professor of Horticulture, College of Agriculture, Cornell University, will deliver an illustrated lecture on "Apple Growing" in the North West Pacific States, on Monday evening, Feb. 1st, '09.



## A WORD TO SHORT COURSE STUDENTS.



We sincerely trust that you will be pleased with your stay in Guelph, and with the instruction received at the College.

The Ontario Government has invested a large sum of money in this farm, in the College buildings and equipment, and in maintaining a large staff of Instructors from year to year. You cannot hope to get more than a hazy idea of our work in two weeks, but during the time you are here we invite you to visit the different departments of the College, to talk with the professors and instructors, and, as far as possible, to get a clear idea of the scope and workings of the whole institution.

If you do this we feel sure that you will see the need of a longer course in Agricultural Science. Why not decide now, and before you leave make application for a longer Course, commencing next fall?

Remember this, our Course for farmers' sons takes only two winters, and that the spring, summer and harvest seasons may be spent at home on the farm. Please keep in mind also, that the Course is planned to meet the requirements of the farmer's boy, who has up to this time been unable to attend school regularly. At this, the Farmers' College, every boy gets the same chance, and by hard work and at a small expense, can secure for himself a thorough practical common-sense education for a life on the farm.

If you would like to discuss this subject further with any of our instructors whom you may meet here, please feel at liberty to do so, or I shall be pleased at any time to meet you in my office in the Main Building.

G. C. CREELMAN,

President.



