

**CIHM
Microfiche
Series
(Monographs)**

**ICMH
Collection de
microfiches
(monographies)**



Canadian Institute for Historical Microreproductions / Institut canadien de microreproductions historiques

© 1996

Technical and Bibliographic Notes / Notes techniques et bibliographiques

The Institute has attempted to obtain the best original copy available for filming. Features of this copy which may be bibliographically unique, which may alter any of the images in the reproduction, or which may significantly change the usual method of filming are checked below.

- Coloured covers / Couverture de couleur
- Covers damaged / Couverture endommagée
- Covers restored and/or laminated / Couverture restaurée et/ou pelliculée
- Cover title missing / Le titre de couverture manque
- Coloured maps / Cartes géographiques en couleur
- Coloured ink (i.e. other than blue or black) / Encre de couleur (i.e. autre que bleue ou noire)
- Coloured plates and/or illustrations / Planches et/ou illustrations en couleur
- Bound with other material / Relié avec d'autres documents
- Only edition available / Seule édition disponible
- Tight binding may cause shadows or distortion along interior margin / La reliure serrée peut causer de l'ombre ou de la distorsion le long de la marge intérieure.
- Blank leaves added during restorations may appear within the text. Whenever possible, these have been omitted from filming / Il se peut que certaines pages blanches ajoutées lors d'une restauration apparaissent dans le texte, mais, lorsque cela était possible, ces pages n'ont pas été filmées.
- Additional comments / Commentaires supplémentaires:

L'Institut a microfilmé le meilleur exemplaire qu'il lui a été possible de se procurer. Les détails de cet exemplaire qui sont peut-être uniques du point de vue bibliographique, qui peuvent modifier une image reproduite, ou qui peuvent exiger une modification dans la méthode normale de filmage sont indiqués ci-dessous.

- Coloured pages / Pages de couleur
- Pages damaged / Pages endommagées
- Pages restored and/or laminated / Pages restaurées et/ou pelliculées
- Pages discoloured, stained or foxed / Pages décolorées, tachetées ou piquées
- Pages detached / Pages détachées
- Showthrough / Transparence
- Quality of print varies / Qualité inégale de l'impression
- Includes supplementary material / Comprend du matériel supplémentaire
- Pages wholly or partially obscured by errata slips, tissues, etc., have been refilmed to ensure the best possible image / Les pages totalement ou partiellement obscurcies par un feuillet d'errata, une pelure, etc., ont été filmées à nouveau de façon à obtenir la meilleure image possible.
- Opposing pages with varying colouration or discolourations are filmed twice to ensure the best possible image / Les pages s'opposant ayant des colorations variables ou des décolorations sont filmées deux fois afin d'obtenir la meilleure image possible.

This item is filmed at the reduction ratio checked below /
Ce document est filmé au taux de réduction indiqué ci-dessous.

10x		14x		18x		22x		26x		30x	
<input type="checkbox"/>	<input type="checkbox"/>	<input type="checkbox"/>	<input type="checkbox"/>	<input type="checkbox"/>	<input type="checkbox"/>	<input checked="" type="checkbox"/>	<input type="checkbox"/>	<input type="checkbox"/>	<input type="checkbox"/>	<input type="checkbox"/>	<input type="checkbox"/>
12x		16x		20x		24x		28x		32x	

The copy filmed here has been reproduced thanks to the generosity of:

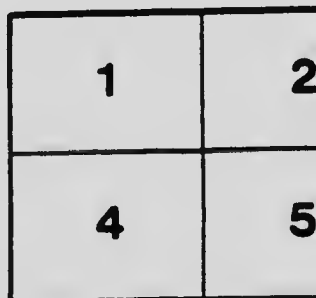
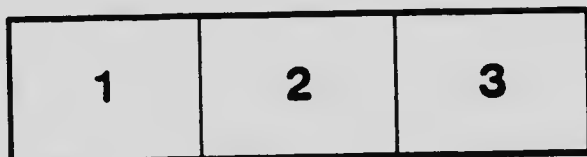
National Library of Canada

The images appearing here are the best quality possible considering the condition and legibility of the original copy and in keeping with the filming contract specifications.

Original copies in printed paper covers are filmed beginning with the front cover and ending on the last page with a printed or illustrated impression, or the back cover when appropriate. All other original copies are filmed beginning on the first page with a printed or illustrated impression, and ending on the last page with a printed or illustrated impression.

The last recorded frame on each microfiche shall contain the symbol \rightarrow (meaning "CONTINUED"), or the symbol ∇ (meaning "END"), whichever applies.

Maps, plates, charts, etc., may be filmed at different reduction ratios. Those too large to be entirely included in one exposure are filmed beginning in the upper left hand corner, left to right and top to bottom, as many frames as required. The following diagrams illustrate the method:



L'exemplaire filmé fut reproduit grâce à la générosité de:

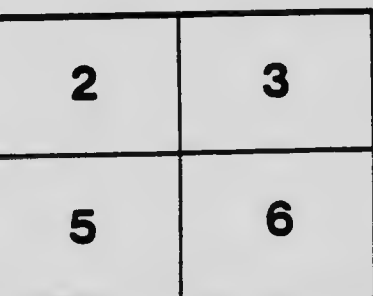
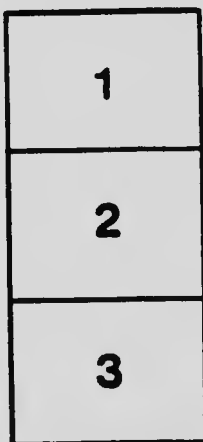
Bibliothèque nationale du Canada

Les images suivantes ont été reproduites avec le plus grand soin, compte tenu de la condition et de la netteté de l'exemplaire filmé, et en conformité avec les conditions du contrat de filmage.

Les exemplaires originaux dont la couverture en papier est imprimée sont filmés en commençant par le premier plat et en terminant soit par la dernière page qui comporte une empreinte d'impression ou d'illustration, soit par le second plat, selon le cas. Tous les autres exemplaires originaux sont filmés en commençant par la première page qui comporte une empreinte d'impression ou d'illustration et en terminant par la dernière page qui comporte une telle empreinte.

Un des symboles suivants apparaîtra sur la dernière image de chaque microfiche, selon le cas: le symbole \rightarrow signifie "A SUIVRE", le symbole ∇ signifie "FIN".

Les cartes, planches, tableaux, etc., peuvent être filmés à des taux de réduction différents. Lorsque le document est trop grand pour être reproduit en un seul cliché, il est filmé à partir de l'angle supérieur gauche, de gauche à droite, et de haut en bas en prenant le nombre d'images nécessaire. Les diagrammes suivants illustrent la méthode.



MICROCOPY RESOLUTION TEST CHART

(ANSI and ISO TEST CHART No. 2)



1.50

1.56

1.63

1.71

1.80

1.88

1.96

2.04

2.12

2.20

2.29

2.38

2.47

2.56

2.65

2.74

2.83

2.92

3.01

3.10

3.19

3.28

3.37

3.46

3.55



APPLIED IMAGE Inc

1653 East Main Street
Rochester, New York 14609 USA
(713) 482 - 0300 - Phone
(716) 288 - 5989 - Fax

53A

111
1262

MONTREAL



1904

MONTREAL CANADA PROVINCE OF QUEBEC

1904

ADVERTISEMENTS



THE GREAT INTERNATIONAL HIGHWAY OF
TRADE AND TRAVEL
..... BETWEEN

The Atlantic Ocean
and The Great Lakes

It is the Popular Route from every direction to
Montreal, the Metropolis of Canada. Fast Trains.
Up-to-date Equipment. Polite Employees



TRAVEL BY THE

Grand Trunk
Railway
System

TO THE

WORLD'S FAIR

.... ST. LOUIS, MO.



The World's Fair is by
all comparison the
most wonderful in all
history. It is the great-
est of the creations of
modern man.
Fifty Nations and all
the States and Terri-
tories of the United
States have combined
their efforts to make
a twentieth century
wonder.



The key-note of travel — harmony — is
sounded by this great system.
Special equipment for the World's Fair
Season.

Through trains direct to St. Louis.
Excursion rates in effect during its pro-
gress.

An elegant and artistic souvenir publication describing
and illustrating the World's Fair, with maps of St.
Louis and the World's Fair Grounds, etc., will be
mailed to any address on receipt of request accom-
panied by four cents in postage stamps to

G. T. BELL

General Passenger and Ticket Agent

MONTREAL, QUEBEC

ADVERTISEMENTS

BY THE LINES OF THE

Canadian Pacific Railway

radiating from Montreal, all the important points
in Canada and the United States can be reached



Place Viger Hotel, Montreal

Fast Trains to Quebec, the Laurentians, Eastern Townships, St. John, N.B., Halifax, Boston, Worcester, Springfield, Mass., New York, Portland, Me., and the principal Atlantic sea-side resorts, Toronto, Niagara Falls, Detroit, Chicago, Ottawa, the Timiclaming, New Ontario, Sault Ste. Marie, St. Paul and Minneapolis, Winnipeg, and the Great Wheat Belt of Western Canada, the Kootenay Mining Regions, the Mountains of British Columbia, unrivalled for scenic grandeur, Vancouver and the Pacific Coast.

The fine fleet of the Canadian Pacific Railway Company's Atlantic Steamship Lines carries passengers from Montreal and Quebec to Liverpool, and freight direct to Liverpool, Bristol, London, and Antwerp, in addition to a fast steamship service on the Upper Lakes (Owen Sound to Fort William), on the inland waters of British Columbia, the Pacific Ocean to China, Japan, Australia, *via* Honolulu and Suva, and to Skagway *en route* to the Yukon.

A DAILY DOUBLE TRANSCONTINENTAL SERVICE, including

THE IMPERIAL LIMITED

Crosses the Continent in four and a half days

**SUPERB SLEEPING
AND DINING CARS
AND COACHES**

For illustrated pamphlets apply to city office,
129 St. James St., Montreal, or to

ROBERT KERR,
Passenger Traffic Manager,
MONTREAL

C. E. E. USSHER,
General Passenger Agent,
MONTREAL



TOURISTS'
INFORMATION BUREAU,
MONTREAL.

Entered, according to Act of the Parliament of Canada, in the year 1904,
by HENRY MILES,
at the Department of Agriculture.



MONTREAL

PROVINCE OF QUEBEC
CANADA



MONTREAL, a city of some 350,000 souls, so named from the mountain between whose base and the mighty St. Lawrence the city lies, is the commercial metropolis and national port of the Dominion of Canada. Situated at the head of navigation of one of the greatest of rivers—a river which drains a most fertile and generous land—Montreal is destined to occupy a foremost rank among the cities of this continent and of the world. Long ago, about the year 1535, Jacques Cartier came up the St. Lawrence to where the city now stands, and found a large well-fortified Indian town called Hochelaga. Later on, in 1611, Champlain established a trading-post and called it Place Royale; a tablet in front of the Custom House now marks the spot. It was not, however, till 1642 that Paul de Chomedey, Sieur de Maisonneuve, landed on the island and laid the lasting foundation of the city. For almost a century and a quarter Canada remained a French colony, and not till the Treaty of Paris, in 1763, did Montreal become a British city. Since then, French and English have lived together happily and prosperously, side by side, each in the enjoyment of his own language and religion, both working strenuously for the development of Montreal as a national port, and a port which will eventually be second to none upon the continent.

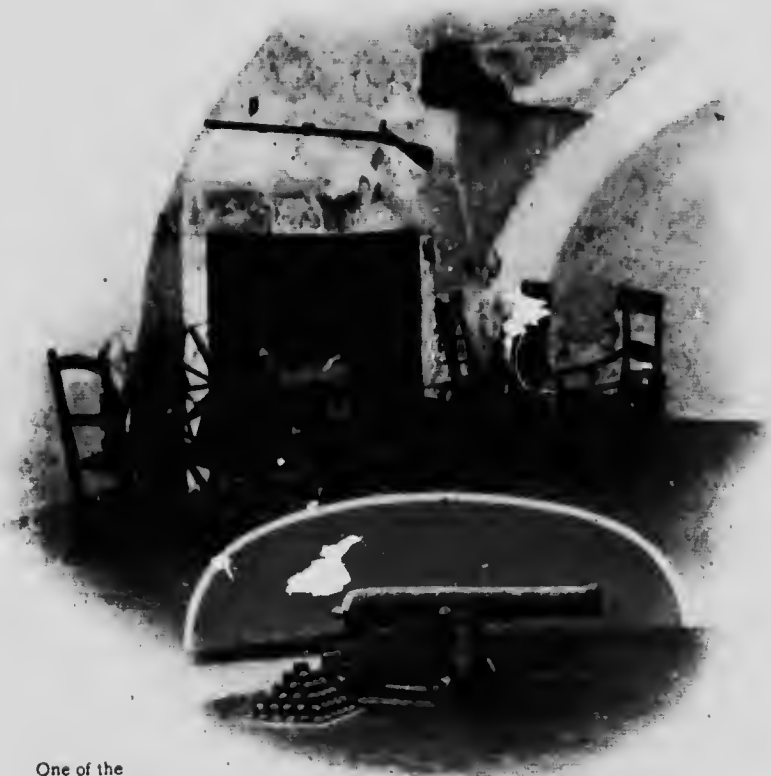
The early history of the United States is indelibly blended with that of Montreal, for it was from this city that many of the strong men of one, two and three centuries ago went forth to discover, to govern, to trade



Monument to commemorate the Landing
of Maisonneuve.

and to convert. On St. Paul street, just east of Place Royale, stood the birth-place of Pierre and Jean-Baptiste Le Moyne the men who discovered the mouth of the Mississippi river, in 1699, founded New Orleans, and who were, between them, governors of Louisiana for forty-six years.

Between 1666 and 1668, Jacques Marquette, the great Jesuit missionary and discoverer, was a familiar figure in Ville-Marie, and he left the banks of the St. Lawrence on his voyage of discovery to the Mississippi. It was to Montreal that Sir William Johnson, of Johnson Hall, on the Mohawk, came in 1760, and on the site of the present Bonsecours Market stood the residence occupied by his son, Sir John Johnson, Indian commissioner, and it was here that peace conferences were held with the great Indian chiefs Brant and Tecumseh.



One of the
Vaulted Rooms
in the
Château de Ramessay.

Canon found in the Old Port of Louisbourg.

At the corner of St. Peter and St. Paul streets stood the residence of Robert Cavalier, Sieur de La Salle. In 1666 La Salle came to Montreal, to go, ten years later, on his voyage of discovery into the North-west and thence to the Gulf of Mexico. On the lower road leading from Montreal to Lachine can still be seen the remains of a fortified seignorial chateau which tradition asserts was the home of La Salle in the year 1668.

Some Historical Reminiscences.

Near the Place d'Armes stood the house of Sieur du Luth, after whom the city of Duluth, in Minnesota, is named. On Notre-Dame street, just west of St. Lambert Hill, was the residence of La Moine Cadillac, who left the then little French village to proceed westward and found the now beautiful city of Detroit. In the years which came after, such men as Washington Irving, General Montgomery, Benjamin Franklin, Arnold, Chase, Carroll and John Jacob Astor followed one after the other to Montreal, each leaving a lasting imprint on the city's history.

A little tablet at the corner of Notre-Dame and St. John streets, with the following inscription: "Forretier House. Here General Montgomery resided during the winter of 1775-6," reminds us that the city was once in the hands of our southern neighbors. Sir Guy Carleton—whose name will always be associated with the Quebec Act, 1774—won back the city for us, and since then Montreal has stood secure, though again threatened during our troubles with the great republic to the south, in 1812-15. Its growth in population has been consistent. At the time of the cession to Great Britain, the city had only a population of some 3,000; at the beginning of last century this had increased to 12,000, and at the present time she boasts of some 350,000 inhabitants.



Old Windmill
on the Lower Lachine Road.

Situated on the island of Montreal, the largest of a group of islands formed by the confluence of the Ottawa with the St. Lawrence river, one thousand miles from the open sea, its position is picturesque to a degree. Behind is the beautifully-wooded Mount Royal, in front the majestic St. Lawrence, and in the distance the mountains



Notre-Dame Church.

of northern New York. The natural beauty of the site is more than matched by its practical importance as the head of ocean navigation; as the key to and from the great interior of the Dominion, as the spot whence all traffic upon the great waterways of the country must centre, Montreal can never lose its maritime and commercial supremacy.

Immediately to the west of the city has been built the Lachine canal, thus obviating the difficulties to navigation presented by the Lachine rapids. The passenger steamers "run the rapids," and this is a most exciting and indeed a never-to-be-forgotten experience enjoyed by thousands of tourists each year.

The Lachine rapids were first run by a steamer in the summer of 1840, by the side-wheeler "Ontario," afterwards known as the "Lord Sydenham."

Not only is Montreal the key to the great waterways of Canada, but it is also the chief railway centre of the Dominion.

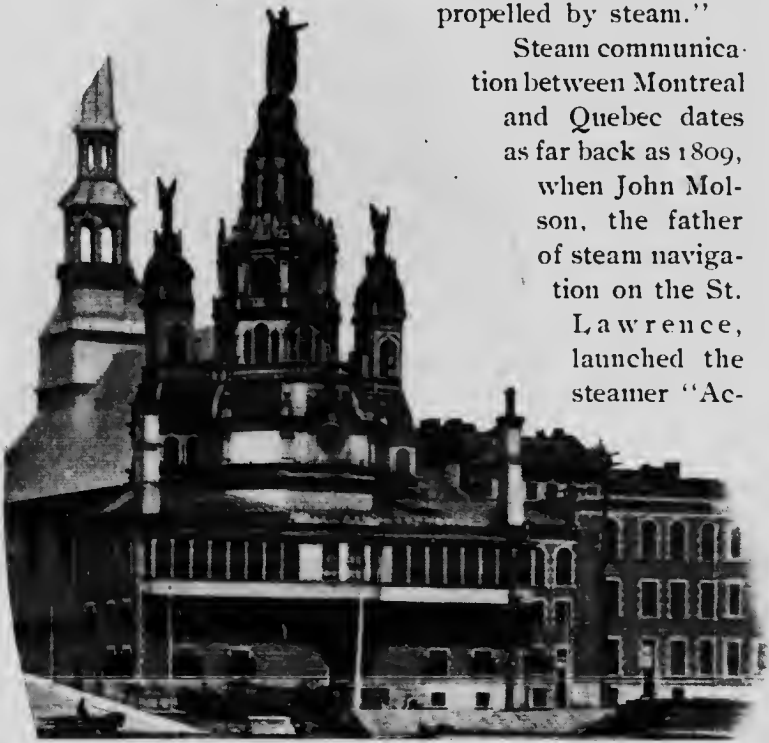
To facilitate direct railway communication with the city, two magnificent bridges span the St. Lawrence and several connect the islands at the branches of the Ottawa river. The Victoria Jubilee Bridge, opened for traffic in 1860, by His Majesty King Edward VII., then Prince of Wales, is a double-track steel open-girder bridge, with carriage-ways and foot-walks on either side of the main trusses. It is a magnificent structure, over two miles

long, and brings its traffic directly into the city. The other bridge over the St. Lawrence belongs to the Canadian Pacific Railway, and crosses the river at the head of the Lachine rapids, striking the north shore a little below the village of Lachine and about seven miles west of the city. This bridge is also a great triumph of engineering.

Ocean steamships, carrying passengers and freight, run direct between Montreal and Liverpool, London, Glasgow, Manchester, Belfast and other British ports; also to several Continental ports, such as Hamburg, Antwerp and Havre, and to the Mediterranean. In connection with the large ocean traffic, the following tablet, found on the walls of the Canadian Rubber Company's works, on Notre-Dame street, records this interesting fact: "1829-1833. The Pioneer of Steam Navigation. On this site stood Bennet & Henderson's foundry, in which were erected the two engines designed and placed by John Bennet on the 'Royal William,' the

first vessel to cross the Atlantic or any ocean, entirely propelled by steam."

Steam communication between Montreal and Quebec dates as far back as 1809, when John Molson, the father of steam navigation on the St. Lawrence, launched the steamer "Ac-



Statue of Notre-Dame de Bonsecours.

commodation" for Montreal and Quebec service, as shown by a tablet on the wall of Molson's brewery.

The City's Foreign Trade. The harbor of Montreal, situated on the north side of the River St. Lawrence, has seven miles of wharfage accommodation, and this is being constantly increased. Before 1851, the largest ship coming to

Montreal did not exceed six hundred tons, with a draught of not more than eleven feet. Since then, however, steady and energetic development of the ship-channel has been carried on, so that now we have a channel between twenty-eight and thirty feet deep at low water from here to Quebec, and one able to accommodate with safety the largest ocean-going vessels.

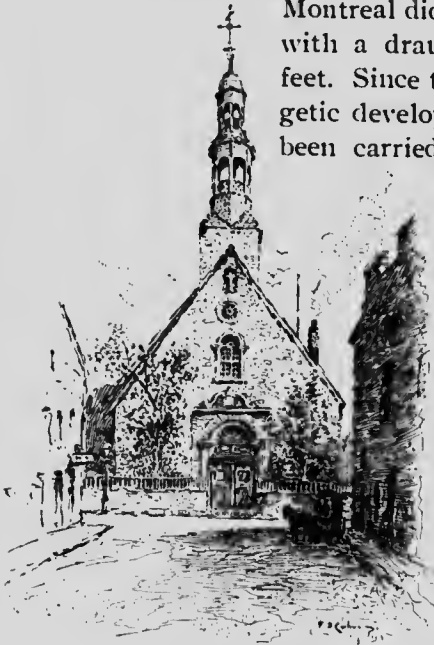
The guard-pier is a huge embankment extending downward from a point near the Victoria Jubilee Bridge, and protecting all the upper part of the harbor from ice-shoves. The revetment-wall is a magnificent piece of granite masonry running along the river-

front and securely protecting the city from inundation. Six million dollars have been spent on harbor improvements, and it will take probably four million more to complete them.

The weekly passenger services of the Allan, the Dominion and the Canadian Pacific Railway Company lines between Montreal and British ports are first-class in every respect, and are yearly becoming more popular with tourists.

Montreal's trade with foreign countries has grown very fast of late years, the short route to Europe *via* the St. Lawrence meeting with universal commendation of trader and passenger alike. Montreal is the great export centre of the continent for dairy produce, and the exports exceed those of New York in butter and cheese.

The exports from the port of Montreal for the year



Old Bonsecours Church.

1903 amounted to \$65,643,393, and the value of the imports to \$79,725,553. The Customs duty collected at Montreal amounted to \$11,803,298.

Built chiefly of limestone, of which there is an inexhaustible supply at hand, Montreal's public and private buildings wear a look of stability, comfort and wealth. Many of its private residences, university buildings and churches are magnificent examples of architecture.

Churches of Interest. One of the most important of these churches is the Roman Catholic parish church of Montreal. It is situated on Notre-Dame street, facing Place d'Armes



St. James Cathedral (Roman Cathedral).

Square, and is a massive and impressive structure. The style is of a composite Gothic order, combining different varieties of a severe French design. Enormous sums of money have been expended on the church by its wealthy owners, the Seminary of St. Sulpice. The vast auditorium holds ten thousand people. The organ is reputed to be the finest on the continent.

The towers are 228 feet high. In the western tower, from the top of which a fine view is obtained, is hung the great bell, *Le Gros Bourdon*, the largest in America, weighing 24,780 pounds. The bell was cast in London, in 1846. In the eastern tower are ten bells, which require eighteen men to ring them.

The Seminary adjoins the church, and here since 1710 have been kept all the registers—baptismal and others—of the city. Here also is found a vast wealth of historic treasure. The building, including the old stone wall on the Notre-Dame street side, have seen practically no change since erected, nearly two hundred years ago. The fleur-de-lys, the quaint old-time clock, with its little bells which tinkle off the quarters and hours, are all relics of old French occupation.

The following interesting tablets contain a great deal of important history in brief space :

“The Seminary of St. Sulpice founded at Paris by Monsieur Jacques Olier, 1641 ; established at Ville-Marie 1657 ; Monsieur Gabriel de Queylus, Superior ; Seigneurs of the Island of Montreal, 1663.”

“François Dollier de Casson, first historian of Montreal, captain under Marshal de Turenne, then priest of St. Sulpice during thirty-five years. He died in 1701, curé of the parish.”

St. James Cathedral (Roman Catholic) is situated on Dorchester street, at the eastern side of Dominion Square. Designed to exceed in size and magnificence all other ecclesiastical buildings on this continent, it is built on the model and being one-third the size of St. Peter's at Rome. The foundations were commenced in 1870, and the structure is hardly completed as yet.

It is built in the form of a cross, 330 feet long and 222 feet wide. The dome is the great feature of the building, and is seen from all parts of the city. It is 70 feet in diameter at its base, and the summit is 210 feet from the floor of the church. The exterior height of the dome to the top of the cross is 250 feet.

The palace of the Roman Catholic archbishop of Montreal adjoins the cathedral to the south.

The church of Notre-Dame-de-Bonsecours, situated on St. Paul street, at the east end of Bonsecours Market, is historically, perhaps, the most important of Montreal's churches. It was named Bonsecours to commemorate the many escapes of the colony from destruction by the Iroquois Indians. It was the first stone church in Montreal. The foundations were laid about 1657, by the

celebrated Sister Bourgeois, who intended to found here the nunnery of the Congregation.

The church of the Gesù, on Bleury street, is a favorite resort of visitors on account of the beauty of its frescoes, and the exquisite music of its choral services.

Christ Church Cathedral (Anglican), situated on the north side of St. Catherine street, between University street and Union avenue, is the Episcopal parish church of Montreal. It is, architecturally, the finest church



Christ Church Cathedral (Anglican).

edifice in the city, and is an excellent specimen of the decorated Gothic style. It was built in 1859, under the *régime* of Bishop Fulford, a marble bust of whom stands in the left transept, and to whose memory there is erected in the churchyard a fine monument similar to the Martyrs' Memorial in Oxford. The spire, built entirely of stone, the only one of the kind in Canada, is 211 feet high.

The Presbyterians have about twenty churches in Montreal, some of them handsome architectural structures built by wealthy congregations; notably, St. Paul's, Knox, Crescent street, and the American Presbyterian Church, all on Dorchester street; St. Andrew's, on Beaver Hall hill, and Parkersville Church, on Sherbrooke street.

St. James Methodist Church, on St. Catherine street, is one of the largest Protestant churches in the city.

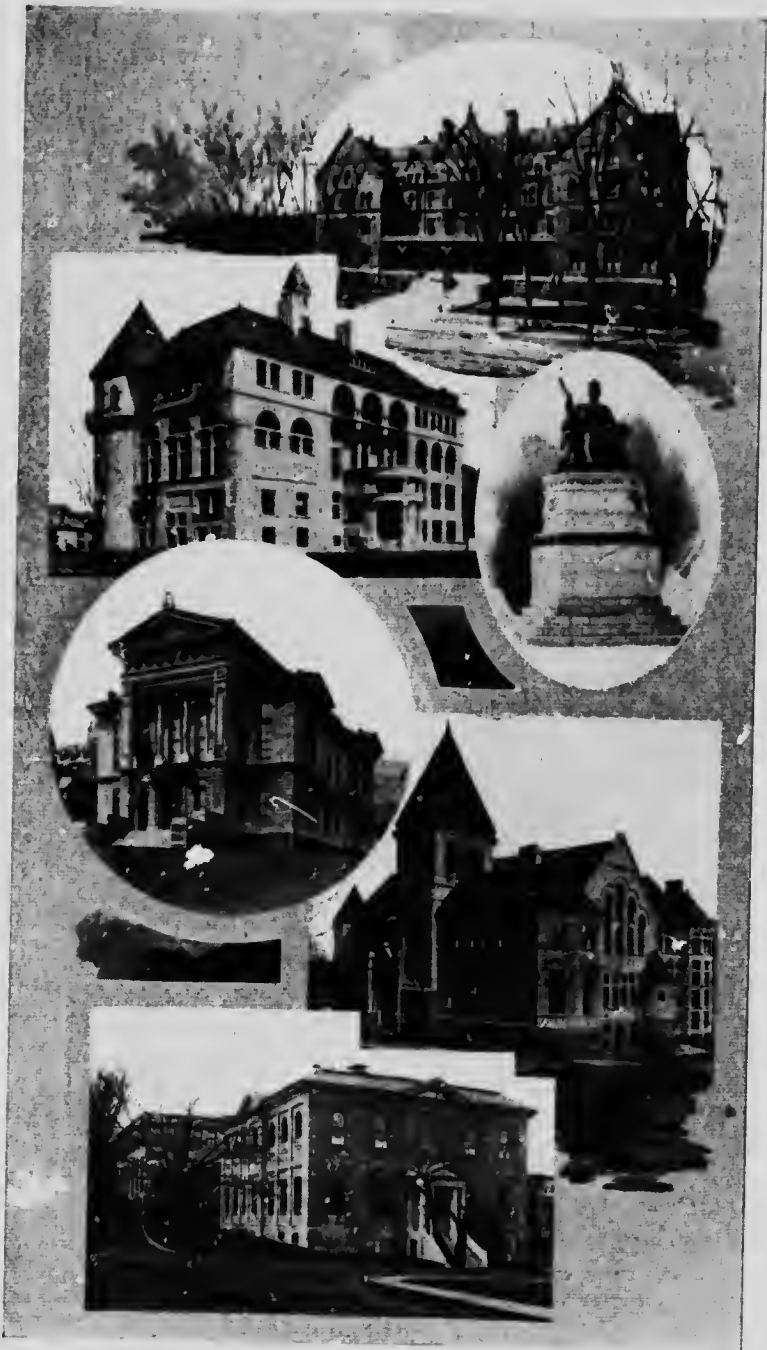
The Seats of Learning. McGill University grounds lie at the foot of the slope of Mount Royal. From the gate on Sherbrooke street, a broad avenue, lined on each side by a double row of fine trees, divides the campus. On the left are the cricket and football grounds, the cinder-path, the library and the museums. On the right stands the new Physics building, the Chemistry and Mining building, and the Engineering building and workshops. At the head of the avenue are the old buildings—the home of the Faculty of Arts, the Molson Hall, the Biological laboratories, the lecture-rooms of the Faculty, and the offices of the administration; while to the rear, on the right, are the buildings of the Medical School.

Close to the grounds are situated the Royal Victoria College (for the Donalda Department), the building of the Faculty of Comparative Medicine and Veterinary Science, the Gymnasium, and the four affiliated theological colleges—Diocesan, Presbyterian, Wesleyan and Congregational.

The modern buildings are magnificent in their architecture and unrivalled in their equipment. The princely munificence of Sir William McDonald has erected and endowed the Physics building and the Chemistry laboratories. It is said by experts that these are unsurpassed, not only on this continent, but in the world. In 1886 Lord Strathcona and Mount Royal, Chancellor of the University, endowed the Royal Victoria College for the instruction of women in the Arts course. In addition to the endowment of one million dollars, he built the college at a cost of three hundred thousand dollars.

Laval University is situated on St. Denis street, one of the chief thoroughfares of the eastern part of the city. It is a handsome building in modern Renaissance style, with a frontage of one hundred and ninety feet. Laval University was founded in 1852 at Quebec by the Seminary of that city, who gave it the name of the founder, François de Montmorency-Laval.

The College of Montreal, or *Petit Séminaire*, is the junior branch of the Seminary of St. Sulpice, and is situated on Sherbrooke street, to the west of Guy street. The buildings are very extensive, and accommodate about four hundred and fifty pupils.



A Few of the Buildings of McGill University.

- | | | |
|-------------------|-------------------------|---------------------------|
| | Royal Victoria College. | |
| Physics Building. | | Statue of Queen Victoria. |
| Redpath Museum. | | Redpath Library. |
| | Medical Building. | |

Behind the college, farther up the hill, stands the old country house of the Seminary, and still farther up is the handsome structure built as the headquarters of the order. The village of the Indian converts stood in a walled enclosure to the east. The two towers which remain standing, in an excellent state of preservation, formed originally a portion of the wall. One of the old towers was used, in early times, as a chapel for the Indian mission, and the other as a school. A tablet on the chapel tower bears this inscription: "Here rest the mortal remains of François Thoronhiongo, Huron; baptized by the Reverend Père de Brébeuf. He was, by his piety and by his probity, the example of the Christians and the admiration of the unbelievers; he died, aged about 100 years, the 21st April, 1690." This Père de Brébeuf, along with Père Lalement, was tortured to death by the Iroquois with every cruelty devisable.

The school held in the other tower had at one time a very famous native teacher. She was called "the Schoolmistress of the Mountain," and a memorial is erected to her memory: "Here rest the mortal remains of Marie-Thérèse Gannansagouas, of the Congregation of Notre-Dame.

Above the door of the western wing is the legend, "*Hic Evangelibantur Indi*"—"Here the Indians were evangelized." Two tablets are seen on the wall on Sherbrooke street: the one to the west stating that the Indian mission was founded in 1677, and recording some facts about the towers; the other to the east marking the position of General Amherst's army at the time of the surrender of the town to Britain.

There are many large public institutions in Montreal, offering interest to strangers visiting the city. The hospitals bear witness to the benevolence of the citizens; and the equipment and character of these institutions show that Canada is in the front rank of surgical and medical science. Very notable among them is the Montreal General Hospital, established 1818, situated towards the eastern end of Dorchester street.

Hospitals and Asylums. The Royal Victoria Hospital was founded in the year 1887, in commemoration of the jubilee of Her Majesty the late Queen Victoria. The founders,



Towers in the Grounds of Montreal College, Sherbrooke Street.
probably the Oldest Structure in Montreal,
dating back some 250 years.

Lord Mount Stephen and Lord Strathcona, each contributed one million dollars for its erection, equipment and endowment.

The Hôtel-Dieu St.-Joseph-de-Ville-Marie is the oldest and largest of the Roman Catholic hospitals in the city. It is situated on Pine avenue, on land given by Benoit and Gabriel Basset. The original building, however, stood on St. Paul street, near Place Royale. It was founded in 1644, by M^{lle} Mance, whose name is inseparable from the early history of the city.

The following tablet: "Hôtel-Dieu de Ville-Marie, founded in 1644 by Jeanne Mance. Transferred in 1861 to this land, given by Benoit and Gabriel Basset. Removal of the remains of Jeanne Mance and 178 nuns, 1861," records the occupation of the present site. Jeanne Mance forms the subject of one of the groups at the base of the statue on Place d'Armes. She is represented as tying up a child's cut finger.

The order of nuns of the Hôtel-Dieu is known as "the Black Nuns." Those who take the full vows never leave the premises.

The Notre-Dame Hospital, situated on Notre-Dame street, close to the Canadian Pacific Railway Station at Place Viger, and established in 1880, is a smaller institution than the others already referred to. It is managed by Roman Catholics, but its doors are open to all.

The Grey Nunnery, so called from the dress of its community, is situated on Dorchester street, to the west of Guy street. It was founded in 1692, when Louis XIV of France had granted, by letters-patent, to the bishop of Quebec, the governor and their successors, power to establish general hospitals and other similar institutions. Over the gateway of the new building is placed the inscription: "Hôpital général des Sœurs Grises. Fondé en 1775. Mon père et ma mère m'ont abandonné, mais le Seigneur m'a recueilli. Ps. 26."

In a corner of the grounds is a red cross which marks a murderer's grave. For the killing of an old man and his wife, for their money, this murderer, Belisle by name, was arrested, tried, convicted and condemned "to torture ordinary and extraordinary, and then to have his arms, legs, thighs and ribs broken, alive, on a scaffold to be erected in the market-place of this city, then put on a rack, his face towards the sky, to be left to die." The sentence was carried out, and the mutilated body buried in Guy street, near where the red cross stands.

Montreal's
Pleasure-grounds. Is.

Montreal has many pleasure-grounds, and its parks and squares are laid out with good taste. There are three large public parks—Mount Royal, St. Helen's Island and Parc Lafontaine.

Mount Royal is an ideal crown for a city. Rising directly behind the city, it is covered to the summit with beautiful trees, under whose grateful foliage thousands find a cool and quiet spot. In its quiet nooks and beside its pleasant drives, the wild-flower mingles with the fern, and all nature seems to extend a welcome to the visitor. From the summit may be had a most enchanting panoramic view of the valleys of the St. Lawrence and Ottawa rivers and of the island itself. The mountain elevator from Park avenue gives an easy means of ascent, while foot-paths lead up its sloping sides. Unquestionably the finest view is obtained from the "Look-out."

Mount Royal is of volcanic origin. The crater of



Entrance to the Seminary of St. Sulpice.
St. Patrick's Church. Chapel of the Grey Nuns.
Hôtel-Dieu.

Mount Royal is on the top of the hill, and there is a prophecy that one day it will become active and bury Montreal in its ashes. From the Observatory can be seen, to the west, the Lake of the Two Mountains, with the various branches of the Ottawa by which it pours its waters into the St. Lawrence, and beyond that the Laurentian mountains, the oldest hills known to geology.

Mount Royal is about nine hundred feet above the sea, and seven hundred and forty feet above the river. The portion set apart as a park contains four hundred and sixty-four acres.

On the opposite side of the mountain from the city are the cemeteries.

Alongside of the Protestant cemetery to the south, on another face of the mountain-slope, lies the Roman Catholic cemetery. It can be reached from the top of the mountain, but the chief entrance is on the Côte-des-Neiges road, which is a continuation of Guy street over the mountain. Here stands the Patriots' Monument to commemorate those who fell in the rebellion of 1837.

The park on the island of St. Helen, containing 28 acres, was granted by the Government to the city in 1874. The island is about a mile from the city, and is reached in summer by a steam-ferry. It was named by Champlain after his wife, Hélène de Bouilli, and bought by him with her dowry. Under the early British *régime* the island was made a garrison. A portion is still reserved for military purposes. The old fort is extremely well preserved, as is also an ancient wooden block-house situated on the crown of the hill. It was upon St. Helen's Island that Chevalier de Lévis, commanding the last French army in Canada, burned his flags (September 8, 1760), rather than surrender them to General Amherst, who took the city.

LaFontaine Park, containing $84\frac{1}{2}$ acres, lies at the east end of Sherbrooke street.

Of the public squares reserved as refreshing resting-places in the midst of the city, Dominion Square is the largest and most beautiful. It is divided into two parts by Dorchester street, and is very tastefully laid out with shade-trees and flower-beds. To the east is the building of the Young Men's Christian Association, constructed

of brick, with facings of grey stone, in the style of Queen Anne. The interior is handsomely fitted up and thoroughly equipped. On the southern part of the square is the statue of the late Sir John Macdonald, and two cannons taken from the Russians in the Crimean war. To the east stands St. James Cathedral, and to the west are St. George's Episcopal and



St. James Methodist Church. St. Paul's Church (Presbyterian).
St. George's Church (Anglican).

the Dominion Square Methodist churches. At the south-west corner is seen the new Canadian Pacific Railway Station and general offices.

Phillips Square lies a short distance eastward on St. Catherine street. The Art Gallery, on the east side, will well repay a visit.

"Our Handicraft Shop," under the management of the Woman's Art Association, has moved to its new quarters, 2456 St. Catherine street, where *habitant* home-spuns, Doukhobor and Galician embroideries and Indian work are being shown.

Southwards, at the foot of Beaver Hall Hill, is Victoria Square. On the way down are passed, on the right, St. Andrew's Presbyterian and, on the left, the Unitarian Church, on which is the tablet: "Here stood Beaver Hall,



Peel Street High School.

built 1800, burnt 1848, mansion of Joseph Frobisher, one of the founders of the North-West Company, which made Montreal for years the fur-trading centre of America."

Opposite the office of the Montreal Business Men's League, on Victoria Square, stands the beautiful bronze statue of Queen Victoria, from which the square is named.

The Queen's Hotel, Fuchs & Raymond, proprietors, is situated at the corner of St. James and Windsor streets, near the principal buildings and pleasure resorts. The hotel is handsomely furnished throughout and its appointments first-class and modern, telephones in the rooms, and it is the only fire-proof hotel in the city.

A Bit of
Old Montreal.

Eastward along St. James street is the Place d'Armes. In the centre stands the bronze statue of de Maisonneuve, above a granite pedestal on which is inscribed: "Paul de Chomedey de Maisonneuve, founder of Montreal, 1642." There are four *bas-reliefs* on the pedestal, representing (1) the founding of Ville-Marie; (2) de Maisonneuve killing the Indian chief; (3) the death of Dollard; and (4) the first Mass. Four full-sized figures stand at the corners: an Indian of the Iroquois tribe; a soldier, LeMoyne; a colonist, Closse,

with his dog, and Jeanne Mance, tying up a child's wounded hand. The statue, by Hébert, a Canadian, is one of the finest pieces of sculpture on the continent. Notre-Dame Church and the Seminary of St. Sulpice stand on the south side, while on the opposite side of the square is the Imperial Insurance building, on the wall of which are two tablets: "Near this square, afterwards named La Place d'Armes, the founders of Ville-Marie first encountered the Iroquois, whom they defeated, Chomedey de Maisonneuve killing the chief with his own hand, 30th March, 1644." "This building is erected on part of the original concession made to Urbain Tessier named Lavigne, this being the second lot granted to an individual on the island of Montreal." To the west is the Bank of Montreal, the oldest bank in Canada, organized in 1817. It is a fine specimen of Corinthian architecture. On the wall is the tablet: "The stone fortifications of Ville-Marie extended from Dalhousie Square through this site to McGill street, thence south to Commissioners street, and along the latter to the before-mentioned square. Begun 1721 by Chaussegros de Léry, demolished 1817." To the west of the bank is the massive building of the General Post Office. In this square the French laid down their arms to the British, under General Amherst, in 1760. On a house at the south-east corner of the square is another tablet: "Here



The Queen's Hotel.

lived, in 1675, Daniel de Grésolon, Sieur Duluth, one of the explorers of the Upper Mississippi, after whom the city of Duluth was named."

Further east is the Champ-de-Mars. It is situated on the slope from Craig street up to Notre-Dame street. at the east end of St. James street. Here the British regiments stationed in the city paraded, and it is still used as a parade-ground by our volunteers. On Craig street, opposite, is the Drill-hall, capable of holding fifteen thousand people. At the top of the ridge are the massive buildings of the Court House, the City Hall, and the Provincial Government House, which was formerly the residence of the Honorable Peter McGill, who was, in 1840, the first British mayor of Montreal. In the Court House are held the principal courts for the district of Montreal. Here was the old Jesuit monastery, which was successively used as military quarters, gaol and court house. The present building was erected in 1856. Two tablets here are interesting: "The Père Charlevoix, historian of La Nouvelle France, 1725." "Here stood the church, chapel and residence of the Jesuit Fathers. Built 1692, occupied as military headquarters 1800, burnt 1803. Charlevoix and Lafitau, among others, sojourned here. On the square in front four Iroquois suffered death by fire, in reprisal, by order of Frontenac, 1696." Here stood also the town pillory. The City Hall is a large and handsome building, with a striking tower and heavy corner turrets, and cost in the neighborhood of \$525,000. On the wall is the tablet: "To Jacques Cartier, celebrated navigator of St. Malo. Discovered Canada and named the St. Lawrence, 1534-1535."

In front, on the river slope of the ridge, is Jacques Cartier Square, at the upper end of which stands Nelson's monument. This tall column, surmounted by a statue of Lord Nelson, was erected by public subscription in 1809. The square is used as an open market. The district round the square is the oldest in the city, few of the houses being less than a hundred years old, and many of them in the old French style. In a house to the east lived the Honorable James McGill; on it is a tablet: "The residence of the Honorable James McGill, founder of McGill University, 1744-1813."



Royal Victoria Hospital.
Western General Hospital. Notre Dame Hospital.
Grey Nuns' Asylum.
Montreal General Hospital.

Adjoining this is the famous Château de Ramezay. It is now a museum, containing many interesting relics. Two tablets on its walls set forth its history: "Château de Ramezay. Built about 1705 by Claude de Ramezay, governor of Montreal, 1703. Headquarters of La Compagnie des Indes, 1745. Official residence of the British



Young Men's Christian Association Building.

governors after the cession. Headquarters of the American army, 1775; of the Special Council, 1837." "In 1775 this château was the headquarters of the American Brigadier-General Wooster, and here, in 1776, under General Benedict Arnold, the Commissioners of Congress—Benjamin Franklin, Samuel Chase, and Charles Carroll of Carrolton—held council." Here Franklin set up his printing press and printed "The Gazette," which still continues as a Montreal daily paper. In the council room Lord Elgin signed the Rebellion Losses Bill, after the rebellion of 1837. So distasteful to the people was this measure, that his lordship was pelted with stones and rotten eggs. The riots consequent upon the passing of this bill led to the removal of the seat of government to Ottawa, then known as Bytown.

On the east side of St. Jean-Baptiste street, between Notre-Dame and St. Paul streets, is possibly the oldest

building now existing in the city. Used as a chemical factory at present, the structure, of massive stone, was erected about 1680, by a trader named Hubert dit Lacroix.

Place Viger is situated on Craig street, some distance to the east of the Champ-de-Mars. It was named after Commander Viger, the first mayor of the city. The chief French residential quarter lies to the north, up St. Denis and the neighboring streets. Opposite the square, on Craig street, stands the Canadian Pacific Station and magnificent Place Viger Hotel. This is a handsome building of red sandstone, and, like the Frontenac at Quebec and other hotels of the Canadian Pacific Railway, affords first-class accommodation to the tourist.

The ancient fortifications of the city, of which relics here and there are still to be seen—notably at the Champ-de-Mars—extended from Dalhousie Square on the east to McGill street on the west. On the north, a bastioned stone wall ran along what is now Fortification lane, while the water-front was also fortified. There were a half-dozen gates, great and small, leading from the city. At the corner of Notre-Dame and McGill streets is the following tablet: "Récollets Gate. By this gate Amherst took possession, 8th September, 1760. General Hull, U. S. Army, 25 officers, 350 men, entered prisoners of war, 20th September, 1812."

St. Louis Square, situated to the west of St. Denis street, above Sherbrooke street, is one of the most delightful in the city. To the east is the Aberdeen School, one of the largest and best-equipped of the schools of the Protestant School Commissioners.



Château de Ramesay.

These squares, reserved in the various districts of the city, have a total area of $47\frac{1}{4}$ acres; and, along with the public parks, have an estimated value of \$7,238,500.

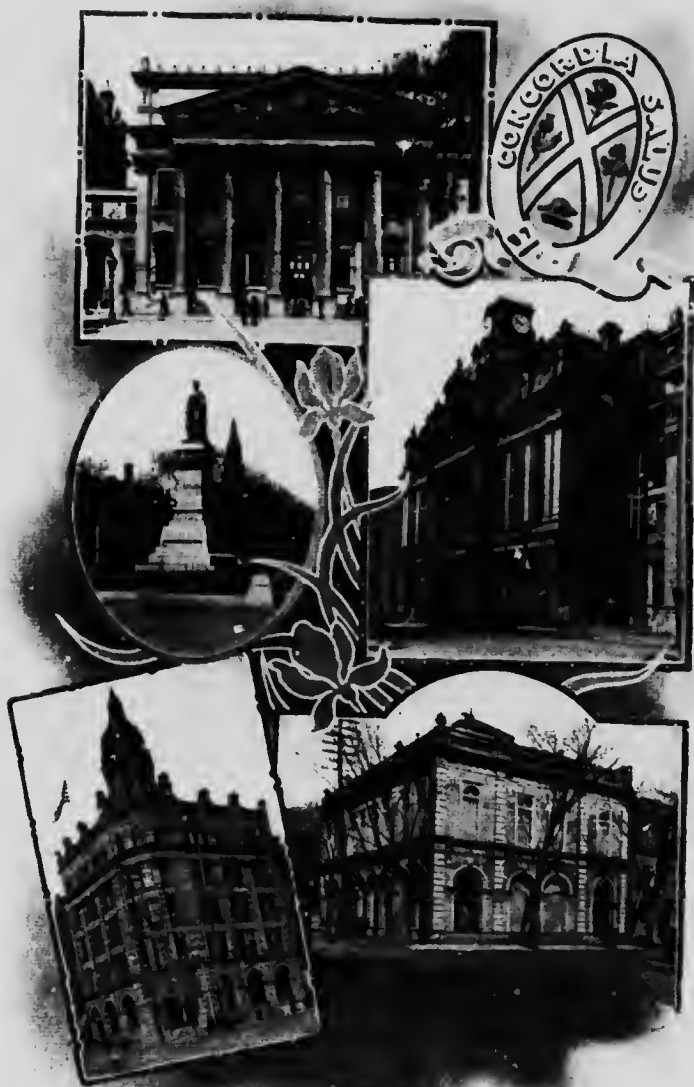
The water supply of the city is good. Powerful engines raise the water of the river to two reservoirs on the side of the mountain.

The city is as regularly laid out in streets as the configuration of the land would permit. The streets cross one another at right angles. There are in all 182 miles of streets in the city. Of these 45 miles are covered by electric car lines.

The Bonsecours Market, situated on the water-front, near Jacques Cartier Square, is one of the city's sights, on a market day, presenting as it does the unique scenes of French provincial life. Thither flock, on Tuesdays and Fridays, the country *habitants* with their little carts and homespun clothing. Amid the jabber of Norman *patois*, and a preposterous haggling worthy of Italy, over the *trente sous*, the *neuf francs*, or the *un cen*, one catches glimpses, through the jostling crowds, of piles of wooden shoes, of brilliant stripes of native rag-carpet, of home-made chairs, or olive-wood rosaries and metal charms, exposed for sale; and at Easter-tide the display of enormous oxen, decorated with paper roses, green, yellow and red, delight the hearts of the children and peasants. The lover of human nature will find ample opportunity for the study of character in an early morning walk through the motley throng.

There are thirty-four chartered banks in Canada, with an authorized capital of \$86,332,566, and a paid-up capital of \$73,591,509. Montreal being the great commercial centre of the Dominion, has the head offices of a number of the banks and branches of all the most important of these financial institutions.

Fish and Game. While hundreds of sportsmen from the United States and Great Britain each year visit Canada's magnificent forests, lakes, rivers and streams, and who can tell even as well as the native himself the advantages of this or that section as regards the deer, the moose, the trout, the ouananiche, or the small-mouth bass, there are still thousands devoted to the reel and rifle who are utterly ignorant of what the territory north of the 45th parallel has to offer.



Bank of Montreal.
Monument to Queen Victoria in Victoria Square.
Bank of Toronto (U.S. Consulate).

Post Office.
Art Gallery.

It is presumed that the reader is an unattached sportsman, that he is not a member of one of the many fish-and-game clubs, but would, perhaps, prefer to work out his own salvation, as it were, with the aid of a few suggestions and his own instinctive love of sport.

First of all, fishing and hunting in Canada is an inexpensive sport, as compared with other sections of the continent; particularly if it is gone about in the right manner. If the luxury of a guide is demanded, the pay runs from \$1 to \$3 per day, according to locality, but never more. Throughout the Province of Quebec, Jean-Baptiste and his good wife keep the hostelry, and a dollar a day or thereabouts is the maximum charge. The little hotel over which he presides is ordinarily comfortable, but never fashionable, and nine o'clock at night finds the household, including the tired fisherman, sound asleep.

For trout, speckled and grey, the Laurentians open up to the sportsman a delightful territory, being on the lines of the Canadian Pacific Railway, within a day's ride of the city. For trout and for the small-mouth bass, often called the prince of American game-fish, that vast field for the angler known as the "Highlands of Ontario" is readily accessible by the Grand Trunk Railway. If ouananiche, spoken of as the land-locked salmon, are the quest, then the journey continues on from Montreal to the Lake St. John country.

Still another sportsman's territory is opened up to the lover of the rod and gun by the Intercolonial Railway; for upon this line we have the lovely Metapedia valley, with all its famous rivers and streams filled with trout and salmon; the same territory, in the autumn, furnishing fine sport for the hunter, with its caribou, moose and deer.

Within a ride of an hour or two of Montreal, black bass, doré and maskinongé fishing can be obtained which would warm the heart of the average angler. These spots are to be found on the St. Lawrence, in the neighborhood of the Lachine, the Long Sault, the Cascades and the Cedar rapids, on the Richelieu river, on the Ottawa, and on the various lakes in that section of the Province to the south of Montreal. In this latter dis-



City Hall.
Nelson Column.
Court House.

trict might be mentioned Brome lake, near Knowlton, famous for its large black bass; Lake Memphremagog, partly in the Province of Quebec and partly in Vermont,



Windsor St. Station, Canadian Pacific Railway.

where large grey trout and pickerel abound; and Lake Megantic, with its tributaries, some five hours from Montreal. The waters in this latter section are well filled with

speckled trout. Again, there are various points on the Ottawa river where bass and maskinougé fishing is unexcelled, the latter running up to sixty pounds in weight.

To the north of Montreal, in what is known as the Ste. Agathe region, are literally hundreds of lakes which abound with speckled trout, and which can be fished with success throughout the summer months. An advantage here, also, is the fact that practically any point in the district may be reached in a day's journey. In the autumn, red deer, partridge and duck also abound in this section, and here are to be seen vast stretches of country in which the settler is unknown and where the woodman's axe has yet to ring.

The "Highlands of Ontario," already referred to, are reached by the northern division of the Grand Trunk Railway running from Toronto to North Bay. The lake country presents unrivalled facilities for hunting, fishing and camping. Another



Grand Trunk Railway Station.

district, east, known as the Haliburton region, but included in the high altitude of the Highlands, is the haunt of some of the largest speckled trout on the continent, running as high as eight pounds each.

A great advantage in fishing and hunting in Canada, and one which will be readily appreciated by all true sportsmen, is the fact that he has plenty of elbow-room. The domain occupied by the fish and game covers so many hundreds of thousands of acres, that he need not feel that his pet pool or favorite lake will be infested by a crowd of eager, and perhaps noisy, sportsmen. Then



The New Offices of the Grand Trunk Railway.

again, the quantity and quality of the sport is in accord with the wide domain. In the cold waters of these northern lakes and rivers, not only do the fish thrive, but grow larger and gamier than in any other section of the continent. A well-known writer on fishing in Canadian waters has described the ouananiche as an "Indiarubber idiot on a spree." This might be applied nearly as well to the other game-fish of these northern waters; and all we can say is, "Come and see for yourself."

Any information required as to these resorts can be obtained by addressing the office of the Montreal Business Men's League.

WHEN YOU MAY FISH AND HUNT

PROVINCE OF QUEBEC

Caribou.—From the 1st of September to the 1st of February.

Deer and moose.—From the 1st of September to 1st January.

Deer and moose, counties of Ottawa and Pontiac.—From 1st October to 1st December.

It is forbidden to hunt, kill, or take, at any time, the young of caribou, deer or moose of one year of age or less. Also to hunt, kill or take at any time any cow moose or doe.

Beaver.—At any time after the first day of November, 1903.

Mink, otter, marten, pekan, fox and lynx.—From the 1st of November to 1st of April.

Hare.—From 1st November to 1st of February.

Bear.—From 20th August to 1st July.

Muskrat.—From 1st April to 1st May.

Woodcock, snipe, plover, curlew, tattler or sand-piper.—From 1st of September to 1st of February.

Birch or spruce partridge.—From 1st of September to 15th of December.

Widgeon, teal, wild duck of any kind.—From 1st of September to 1st of April.

Sheldrake, loons, gulls, eagles, falcons, hawks and other birds of the falconidae are not protected.

It is forbidden to take nests or eggs of wild birds at any time of the year.

Line fishing, and rod-and-line fishing, are alone permitted in navigable waters, and the rod-and-line fishing only is permitted in the non-navigable waters of the Province of Quebec.

Any person not having his domicile in the Province, who desires to fish therein, must, before beginning to fish, procure a special license to that effect from the Commissioner, or from any other person authorized for that purpose.

Fees for license for non-residents are as follows :

For one day or more, per day	\$ 1.00
For one month	10.00
For two months	15.00
For three months	20.00

Bona fide active members of the clubs duly incorporated under the laws of the Province, or licensees of the fishing territory, have no license to pay to fish in their territory.

The fishing rights do not give non-residents the privilege to hunt.

OPEN SEASON FOR FISH

Bass.—From 16th June to 15th of April.

Maskinongé.—From 2nd of July to 25th of May.

Pickereel (doré).—From 16th of May to 15th of April.

Salmon.—From 2nd of February to 15th of August.

Speckled trout.—From 1st of May to 1st of October.

Grey trout, lake trout or lunge.—From 2nd of December to 15th of October.

Whitefish.—From 2nd of September to 10th of November.

Ouananiche.—From 2nd of December to 15th of September.

The St. Lawrence
Below Montreal.

Boucherville, situated on the south shore of the St. Lawrence, a few miles below Montreal, was, in the old French *régime*, known as Fort St. Louis. Here, on May 20, 1668, Father Marquette, the discoverer of the Mississippi, baptized a baby Indian girl, and that baptism appears at the head of the first register of the parish. The original, in the hand of the famous Jesuit, is still to be seen in the parish church.



Club St. Denis.

St. James' Club.
Mount Royal Club.

The Lower St. Lawrence, specially attractive to those seeking pleasant summer quarters and to the lovers of the rod and gun, is reached by the Intercolonial Railway, running down the south side of the river. On the way are passed St. Hyacinthe, a summer resort, and Drummondville, in whose neighborhood good trout fishing may be had. Thence the line runs through twenty-eight miles of forest abounding in deer and caribou. At Lévis the river is reached, whence are seen the heights at Sillery, the Plains of Abraham, and Quebec itself. The city is beyond description. It is unique among the cities of the continent. To one coming from the busy West and South, everything here is strange and new; for, despite its commercial progress, the past and present seem inseparably interwoven. Quebec of to-day reminds one at every turn of the centuries dead and gone.

For hundreds of miles below the country is purely French-Canadian. The farms are long and narrow, with quaint cottages and low barns. Beyond this is the district of summer resorts, each with its own peculiar feature to commend it to the pleasure seeker.

Murray Bay, on the opposite side of the river, amidst magnificent surroundings, with cool and invigorating ocean breezes, is more accessible this year than heretofore, owing to the construction of the new short line from Rivière Ouelle to Rivière Ouelle wharf, thence by steamer across the broad St. Lawrence. This new route saves many hours of travel. The new hotel, the "Manoir Richelien," completes Murray Bay as an ideal summer resort.

Rivière-du-Loup, besides being a favorite watering-place, is a centre from which various points on the river or in the forests can be easily reached. A railway runs inland here to Temiscouata Lake, where good fishing for tuladi and trout can be had. Steamers ply from Rivière-du-Loup to the watering-places on the north side of the St. Lawrence—Murray Bay, Tadousac and the Saguenay river. One of the most remarkable of nature's works on the continent is this Saguenay river. As Bayard Taylor says: "It is a natural chasm, like that of the Jordan Valley and the Dead Sea, cleft for sixty miles through the heart of a mountain wilderness."



Scenes on the Canada Atlantic Railway.

Cacouna is one of the most popular places on the river. Bie is, perhaps, the prettiest spot on the south shore, and has often been called the Switzerland of Canada. Rimonski and Little Metis are farther down the river, and at about this point the Railway strikes inland to the beautiful valley of the Matapedia, so justly famous for its salmon rivers. Below this lies the home of the moose, the deer and the caribou. Here also are the rivers Restigouche, Mipisquit and Miramichi, abounding in salmon and trout. At Moncton is to be seen the wonderful tidal-bore on the Petticodiac river. Here a branch of the railway runs to St. John, and another branch to Pointe-du-chêne, whence Prince Edward Island can be reached by boat. This beautiful island can also be reached by rail to Picton and thence by boat to Charlottetown, the capital. The main line of railway ends at Halifax, well known as one of the military and naval depôts of the British Empire. From Truro, on this line, a branch runs to Cape Breton Island, and through the island to Sydney. This island has lately risen into importance through its rich coalfields. Here are also many charming summer resorts, such as Baddeck, on the Bras d'Or lakes.

On Dominion Square, one of the most prominent structures, is the splendid cut-stone pile of the Windsor Station—headquarters worthy of the Canadian Pacific Railway, the greatest transportation company in the world. It controls 10,000 miles of lines, stretches from the Atlantic to the Pacific, and has fleets of fine vessels regularly plying on both oceans. On the Atlantic its ships keep up a regular service between Montreal, Quebec or St. John, N.B., and London, Liverpool, Bristol and Antwerp, and on the Pacific between Vancouver and Victoria, B.C., and the Orient, Skagway and Seattle, while the steamers of the Canadian-Australian line run in close connection with its trains to Australasia.

Besides the Windsor Station, it has another fine depot in the east end of the city, on Place Viger. Here arrive the trains from Quebec, the Nominique branch through the Laurentians and the north shore route to Ottawa. The Windsor Station, however, is the centre of the whole system, for it is the point of departure and arrival of the

regular transcontinental trains, and of the "Short Line" trains that connect Montreal with the Maritime Provinces, Halifax and St. John, the winter terminus of the Atlantic steamship service. Here, too, arrive and depart the trains for New York, Boston and Toronto.

Such a system touches many points of interest to the tourist. Quebec, Montreal and the Maritime Provinces mite scenic and historic interest. From Toronto, Niagara and the "Garden of Canada" may be visited. The sportsman will seek the St. Maurice and Gatineau



Iona Islands, Bras d'Or Lakes, Cape Breton, Nova Scotia.

valleys for big game, and Timiskaming and Mississauga for fishing and canoeing, while the Laurentians afford most pleasant outings. At Desbarats the Indian play, "Hiawatha," and at Rat Portage the lovely Lake of the Woods attract much interest, and Winnipeg and the prairies shew a nation in the making—a process the Canadian Pacific Railway is doing much to foster. The Canadian Rockies are famous the world over, and are all the more accessible by reason of the double daily transcontinental train service, including the Imperial Limited express, and the chain of fine hotels the Canadian Pacific has instituted. Banff, Lake Louise, Field, Emerald

Lake, the Yoho valley and Glacier are the favorite points for tourists; while the sportsman will find Sicomous, on Shuswap Lake, one of the most attractive spots. The whole of British Columbia, however, is an



excellent country for the angler or the lover of big game. Vancouver and Victoria are most picturesquely situated, and he who crosses the continent in the Imperial Limited or

express trains of this great Canadian company will find it one of the most interesting and delightful trips imaginable.

Montreal is the headquarters of one of the oldest railroads, not only of America, but of the world. Railroading was in its infancy when, in 1851, the Grand Trunk Railway Company obtained its charter, and it was only two years later that the line from Montreal to Portland, Me., a distance of two hundred and ninety-seven miles was opened—a remarkable record for those early days. This vigorous and progressive beginning was kept up, and the main line to Toronto was opened in 1856, and continued to Sarnia in 1858. The next great step was the purchase of the Chicago and Port Huron Line, which opened communication from the great city on the Lake to Montreal, and thence to the Atlantic Ocean, at Portland. Further details of the progress of this huge corporation, interesting as they are, must be left, and it will be sufficient to say that the Grand Trunk System to-day has a mileage of four thousand one hundred and seventy-nine miles; that it covers with its iron network the States of Illinois and Michigan; that it touches every town of importance in the provinces of Ontario and Quebec, and that the original section through Vermont, New Hampshire and Maine carries a yearly increasing number of pleasure-seekers to the seaside resorts of the Atlantic coast. It receives inland water freight on lakes Huron, Michigan, Erie and Ontario; it taps both inland ocean navigation at Montreal, and it meets the great ocean liners at Quebec, Montreal and Portland.

Naturally, a railroad system with such a mileage and with such varied connections offers a wide range of attraction to the tourist, every taste finding something to satisfy it. The vast expanse of inland seas, the varied beauty of wooded Islands, the shimmering loveliness of lonely lakes, the foamy attractions of rapid streams, the charm of tree-clad hills, the grandeur of snow clad mountains, and the awe-inspiring Niagara Falls, are all found along this line.

A trip to Montreal from the West carries the traveller past four of the world's great triumphs of engineering skill. The St. Clair tunnel is really an iron tube nine-



Beach at Cacouna.

teen feet in diameter and nearly two miles long, through which the trains pass under the St. Clair river. The International bridge crossing the Niagara River at Buffalo is a vast and important piece of work. The single-arch double track steel bridge at Niagara Falls replaces the old suspension bridge which had such a world-wide fame. The new bridge is not only a wonderful structure, but it harmonizes in a marvellous way with the natural scenery about. The span of the arch is 115 feet long and 226 feet above the river. At Montreal is the Victoria Jubilee bridge. This has replaced the old tubular bridge; and while the work was in progress it was so cleverly performed that no stoppage of traffic was necessary.

By taking any of the many branch lines at different points, lovely side-trips can be had, and splendid localities for fishing and shooting reached. Its lines into the northern part of Ontario lead into the wonderful scenic region of Mnskoka, a name already well known among



Abenakis Springs Hotel, Quebec.

tourists and lovers of beautiful scenery. Here are lakes and streams, varied in character but uniform in beauty, which make a trip through this district a continual panorama of loveliness.

The yachting centres of the Richelieu and of Lake St. Louis, where the international races are held, are all reached by this line. Perhaps the most enjoyable of the outings in the vicinity of Montreal is the trip down the Lachine rapids. The experience is unique, and those who "shoot" the rapids for the first time experience the sensation of having come safely through some dangerous pass. This is considered to be one of the feats of navigation of the world.

The rolling-stock and road-bed of this company are in excellent condition, and everything is done for the comfort and convenience of their passengers. One of the finest structures in Montreal is the general offices of the Grand Trunk Railway System, on McGill street, and which is well worthy of a visit.

The Abenakis Springs is one of Canada's best known pleasure and health resorts. These mineral springs rival those of Europe in health-giving qualities, so much so, that they are known as "the Carlsbad of Canada." For

centuries the Indians have referred to these waters as the "Water of Life," because of its wonderful curative properties. The hotel accommodation is excellent and the surroundings of the St. François River, Lake St. Peter, etc., delightful.

The Canada Atlantic Railway from Montreal to Ottawa, and thence across to Parry Sound, carries the tourist through the famous Algonquin National Park of Canada. This Park is a reserve of over two thousand square miles set apart by the Ontario Government for all time to come, "for the benefit and enjoyment of the people." It lies between the Georgian Bay and the Ottawa river, south of Lake Nipissing. It is one of the most remarkable regions of lake and stream, primeval forest and rock, that can be found anywhere. It is a great game-preserve, a fisherman's paradise, a source of water supply, a field for reforestry, and a natural sanitarium. No less than one thousand lakes make the reservation a veritable lakeland, if the expression may be used. The largest is Great Opeongo, and the highest is Caché Lake, which is 1837 feet above the sea-level. The elevation of this territory consequently is much greater than any other district in Canada east



The Restigouche River, New Brunswick.

of the Rocky Mountains. On the shore of Opeongo is the burial place of the Algonquin Indians, who formerly inhabited the district.

Nature interded a region so wooded and watered to be the haunt of fish, birds, game and fur-bearing animals, and, under the wise protection of the Ontario Government, hundreds of strong colonies of beaver, otter, marten and mink are to be found within the protected limits. The lordly moose and red deer are found in large numbers. Fish are plentiful and various kinds are cultivated in all the waters. Good portage roads have been made, and forty-eight shelter-huts have been built in various parts for the convenience of the rangers and the public. A map has been issued by the Government showing the canoe routes, portages and situation of huts. Licenses to fish with rod and line only, and to make a tour through the park, may be had, without charge, on application to the Superintendent, Mr. G. W. Bartlett, at Algonquin Park, P. O., Ontario.

The historical
Ottawa.

The Ottawa river, known to old *voyageurs* and early settlers as the Grand River, is upwards of six hundred miles long, and has twenty large tributaries.

At the Chute-à-Blondeau—*au pied du Long-Sault*—Dollard des Ormeux and his brave Frenchmen perished in 1660, in their stand against the Iroquois.

At St. Anne, where the Ottawa empties into the St. Lawrence, stands the house in which Tom Moore, the great Irish poet, resided in 1805. Here he wrote the "Canadian Boat Song," and the old house has seen no change from that day to this.

Montreal a

Sporting Centre.

Montreal has much to offer in the way of recreation, being the sporting centre of the Dominion and at all seasons of the year appropriate contests may be seen. In Montreal will be found pastimes peculiar to Canada, and in no other city on the continent are these particular games played with such a degree of skill. The Minto Cup, emblematic of the championship of the world in lacrosse, is held by a Montreal club; and the Royal St. Lawrence Yacht Club holds the Seawanhaka International Challenge Cup, which is to twenty-five footers what the America's Cup is to the gigantic ninety-footers.

Lacrosse is the national game of the country, and its season extends from May until October. Hockey is the national winter game, and is played on ice from December until March. In addition to these distinctly Canadian games, football (both Rugby and Association,) cricket, golf, polo, yachting, rowing and canoeing flourish, and all field sports are well patronized. Horse racing comes in for attention also. Ice racing is a feature of winter sports; while for tobogganing and skating no city in the universe furnishes such opportunities.

Montreal is the home of three athletic associations—the Montreal Amateur Athletic Association, the Shamrock Amateur Athletic Association, and the National Amateur Athletic Association; the latter being the foremost French-Canadian club of the country. Each possesses well equipped grounds. The Montreal Amateur Athletic Association has an excellent cinder-track, where on alternate years, the Canadian amateur championships are contested. In the winter this immense athletic oval is turned into an open-air skating rink, with a quarter-mile track. By an arrangement with the National Amateur Skating Association of America, the speed-skating championships of the continent take place on this track every second year.

In small yacht racing Montreal designers, builders and sailors hold an eminent position. Lake St. Louis is within easy access of the city, and affords a magnificent course for sailing. The home of the Royal St. Lawrence Yacht Club is at Dorval, and it is here that the Seawanhaka Cup is kept. This trophy of international fame was won from the Seawanhaka-Corinthian Yacht Club of New York, and has been successfully defended against American and English challengers since its arrival here.

Cross-country riding is extremely popular, and there are two hunt clubs which furnish sport of this character. The Montreal Hunt and the Canadian Hunt are both flourishing organizations. The former is one of the oldest hunt clubs on the continent, standing second in point of age. The Canadian hunt while a younger organization, also possesses an excellent pack of hounds and many riders. The country about Montreal is particularly well adapted for fox-hunting.

There is also a Polo Club, with headquarters at St. Lambert.

Golf has become a favorite pastime, and Montreal is, indeed, well favored, and devotees of the ancient game have no lack of courses, there being no less than six of them in the city, or else within convenient access. All of them are so situated that the scenic advantages alone would appeal to anyone with a love of the beautiful in nature.

Tourists are invited to call at the Information Bureau of the Montreal Business Men's League. The advantages offered to strangers are free of charge and correspondence receives attention.

The address may be used by tourists for letters and telegrams. Side trips and accommodation arranged for; information about the city and all Canadian places of interest furnished on application.

Places of Interest in and about Montreal

- | | |
|--|---|
| Drive through Mount Royal Park and Cemeteries. | Château de Ramezay. |
| Victoria Jubilee Bridge. | Harbor of Montreal. |
| Around the Mountain | Allan Line steamers, foot of St. Peter street. |
| Ferry to St. Helen's Island. | Bank of Montreal. |
| Elevator to the Mountain top. | Natural History Museum. |
| Dominion Square. | Montreal Hunt Club Kennels. |
| Victoria Square. | Canadian Hunt Club Kennels. |
| St. Louis Square. | Sir John A. Macdonald's Monument. |
| Lafontaine Park. | Notre-Dame-de-Lourdes Chapel. |
| Notre-Dame Church. | Ville-Marie Convent. |
| Art Gallery. | Hochelaga Convent. |
| Henry Morgan & Co. | St.-Vincent-de-Paul Asylum. |
| McGill College and grounds. | Montreal College. |
| St. James Cathedral. | Mont St.-Louis College. |
| St. James Methodist Church. | Laval University. |
| City Hall and Court House. | Chas. Desjardins & Co., Fur House, 1537 St. Catherine street. |
| Maisonnette Monument. | Insane Asylum, Verdun. |
| Nelson's Column. | Notre-Dame Hospital. |
| Lachine Rapids. | Old windmill, Lachine road. |
| Royal Victoria Hospital. | Longue Pointe Insane Asylum. |
| Hôtel-Dieu. | Seminary of St. Sulpice. |
| Y. M. C. A. building. | Old towers, Sherbrooke street. |
| General Hospital. | Houses of the old French régime, in or near Jacques Cartier Square. |
| Grey Nunnery. | |
| Church of the Gesù. | |
| Christ Church Cathedral. | |
| Bousecours Market. | |
| Drill Hall. | |

The principal points of interest can be reached by taking the observation-car, which leaves the Windsor, Queen's and Place Viger hotels at stated hours, the particulars of which can be found on page 48.

Worth . . . Knowing

TOURISTS WHO STOP AT
MONTREAL, CANADA
SHOULD VISIT THE



Chas.
Desjardins
& Cie

1527 to 1541 St. Catherine St.
MONTREAL

Are
Immense
Stock

OF ALL
KINDS OF

Furs



SUCH AS
GENUINE

RUSSIAN
CROWN
SABLE . .

SILVER .
FOX

HUDSON
BAY . . .
SABLE . .

MINK . . .

SEAL . . .

PERSIAN
LAMB . .
Etc., Etc.

ALSO FUR RUGS
OF ALL KINDS
AND
DESCRIPTIONS

Montreal Business Incorporated 1901 Men's League

Under the auspices of
The Montreal Board
of Trade



OBJECTS: To advertise Montreal; to bring people to the city; to encourage an attitude of courtesy toward strangers; to exploit national characteristics and historical associations . . .

OFFICERS, 1904-1905

HENRY MILES,	President
CHARLES CHAPUT,	Vice-President
J. C. HOLDEN,	Treasurer

Executive Committee:

HENRY MILES,	Chairman
CHARLES CHAPUT	J. C. HOLDEN
F. W. EVANS	ALEX. MCFEE

Advisory Committee:

HON. J. D. ROLLAND	GEORGE HAGUE
HON. L. BEAUBIEN	ROBT. MUNRO
WM. BIRKS	E. H. BOTTERELL
W. D. LIGHTHALL	C. S. J. PHILLIPS
GEO. T. BELL	C. E. E. USSHER
H. A. PRICE	T. L. PATON
N. E. HAMILTON	A. LALONDE
	WALTER PAUL

Hon. Solicitors, - FOSTER, MARTIN, ARCHIBALD & MANN
Hon. Auditors, SAVAGE & FISK
MISS E. MACFARLANE, Acting Secretary.

Office and Tourists' Information Bureau, - - Montreal
288 ST. JAMES STREET

Here are to be found lists of desirable Hotels, Boarding Houses and Lodging Houses located in Montreal and elsewhere throughout Canada. Rates, special advantages and all other particulars.

Travellers wishing particulars concerning Montreal or any portion of Canada, can obtain same by applying to the Tourists' Information Bureau, either by letter or in person.

Telegrams and letters for tourists may be sent in care of the Information Bureau

Canada Atlantic Ry.



Algonquin Park

comprising 2,000 square miles of high lands, lakes and rivers, is one of our nature's playgrounds along the line of the Canada Atlantic Railway. This vast extent of practically virgin wilderness has aptly been termed "Lakeland," and the Canada Atlantic penetrates it for almost 200 miles. Highest altitudes, best trout fishing, canoeing and camping

New Route, via Ottawa

Canada's Picturesque Capital

Between Eastern Points

NEW YORK, BOSTON,
PORTLAND,
QUEBEC, MONTREAL

and Algonquin Park,
Muskoka,
Parry Sound and
Georgian Bay

200 miles of Lakeland.
Finest canoeing and trout fishing in
Canada.

Standard roadbed and equipment be-
tween Ottawa and Montreal.
Through Cafe Sleeping cars between
Ottawa and New York.

H. B. MUSSEN, AGENT,
403 Beard of Trade Bldg.,
MONTREAL.

W. P. HINTON,
General Pass. Agent,
OTTAWA, ONT.

Abenakis Springs Hotel

*Situated at the confluence of the St. Francis and
St. Lawrence Rivers, at the head of Lake St
Peter. Sixty miles from Montreal*

Open from June 1st to October 1st

WHERE the Summer and Fall Climate, the Mineral Waters, Baths,
Hotel, etc. have no equal in Canada; Boating; Bathing; Fishing;
Driving; Tennis; Clock-Golf; Croquet and all Out-door Pastimes;
Dancing every evening in large, airy ball-room; Cuisine unsurpassed;
Healthy location; Absolute cleanliness; Home comforts.

Terms: \$9.00 to 12.00 per week

YOU will find Abenakis Springs an ideal spot to
spend a day, a week or the season. Come
and stay one day, you will telegraph for your friends

A CONVENIENT TRIP FROM MONTREAL

Morning and Evening trains via the Grand Trunk
Railway. Round-trip tickets from Montreal
to Abenakis Springs. \$2 25

Be sure your ticket reads
Abenakis Springs, Que.



ADDRESS
R. G. KIMPTON, MANAGER

HOTEL EARLINGTON

27th Street West, between Broadway & Sixth Ave.



E. M. EARLE & SON
30 years
connected with Earle's Hotel, N.Y.

New York City

ABSOLUTELY FIREPROOF
... EUROPEAN PLAN ...

The most central and accessible location in the city, combined with quiet and refined surroundings... **Table d'Hote, six to eight.** Music in Palm Room.

Tariff of Rates:

Single room (bath) \$1.50 to \$2.00
Double rooms (bath) 1 person \$2.00
" " 2 persons \$3.00

Bath rooms adjoining.

Large double rooms with private bathroom, 1 person \$3.00
" " 2 persons \$4.00

Suites of parlor, bed-room and bath, for 1 person \$3, \$4, \$5, \$7
" " 2 persons \$4, \$5, \$6, \$8

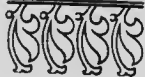
Suites of parlor, two bed-rooms and bath \$7, \$8, and \$10

Bed-rooms furnished with double or twin single brass bedsteads

Seeing Montreal

Cars cover in two hours the history, darling, romance and achievements of nearly three centuries

Observation Cars

Starting June 15		10 a.m. 2 p.m. 4 "
------------------	---	--------------------------

EXPERT GUIDE ON EACH CAR

Every Day, Including Sunday

Cars Start from Windsor Hotel

Pass Queen's Hotel at 10.00 a.m., 2.00 and 4.00 p.m.
Place Viger Hotel at 10.20 a.m., 2.20 and 4.20 p.m.

ROUND TRIP, - - 50 CENTS

E. M. EARLE & SON, 27th Street West, between Broadway and Sixth Avenue, New York City. Telephone 100-1000.



