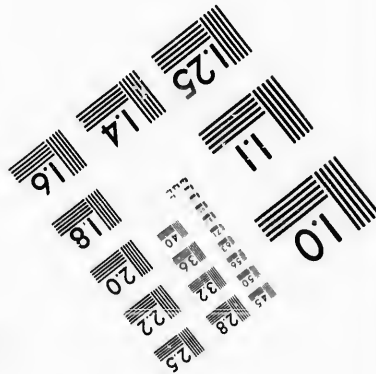
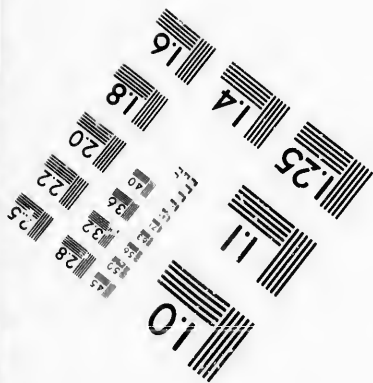
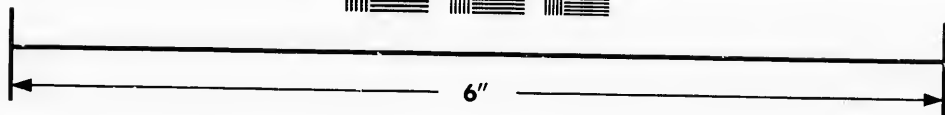
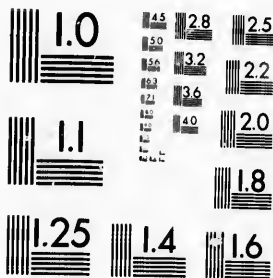


**IMAGE EVALUATION
TEST TARGET (MT-3)**



**Photographic
Sciences
Corporation**

23 WEST MAIN STREET
WEBSTER, N.Y. 14580
(716) 872-4503

10
15
18
20
22
25
28
32
36
40
45
50
54
58
62
66
70
74
78
82
86
90
94
98
102

**CIHM/ICMH
Microfiche
Series.**

**CIHM/ICMH
Collection de
microfiches.**



Canadian Institute for Historical Microreproductions / Institut canadien de microreproductions historiques

10
15
18
20
22
25
28
32
36
40
45
50
54
58
62
66
70
74
78
82
86
90
94
98
102

© 1986

Technical and Bibliographic Notes/Notes techniques et bibliographiques

The Institute has attempted to obtain the best original copy available for filming. Features of this copy which may be bibliographically unique, which may alter any of the images in the reproduction, or which may significantly change the usual method of filming, are checked below.

L'Institut a microfilmé le meilleur exemplaire qu'il lui a été possible de se procurer. Les détails de cet exemplaire qui sont peut-être uniques du point de vue bibliographique, qui peuvent modifier une image reproduite, ou qui peuvent exiger une modification dans la méthode normale de filmage sont indiqués ci-dessous.

- | | |
|------------------------------------------------------------------------------------------------------------------------------------------------------------------------------------------------------------------------------------------------------------------------------------------------------------------------------------------------|--------------------------------------------------------------------------------------------------------------------------------------------------------------------------------------------------------------------------------------------------------------------------------------------------------------------------------------------|
| <input type="checkbox"/> Coloured covers/
Couverture de couleur | <input checked="" type="checkbox"/> Coloured pages/
Pages de couleur |
| <input type="checkbox"/> Covers damaged/
Couverture endommagée | <input checked="" type="checkbox"/> Pages damaged/
Pages endommagées |
| <input type="checkbox"/> Covers restored and/or laminated/
Couverture restaurée et/ou pelliculée | <input type="checkbox"/> Pages restored and/or laminated/
Pages restaurées et/ou pelliculées |
| <input type="checkbox"/> Cover title missing/
Le titre de couverture manque | <input checked="" type="checkbox"/> Pages discoloured, stained or foxed/
Pages décolorées, tachetées ou piquées |
| <input type="checkbox"/> Coloured maps/
Cartes géographiques en couleur | <input type="checkbox"/> Pages detached/
Pages détachées |
| <input type="checkbox"/> Coloured ink (i.e. other than blue or black)/
Encre de couleur (i.e. autre que bleue ou noire) | <input checked="" type="checkbox"/> Showthrough/
Transparence |
| <input type="checkbox"/> Coloured plates and/or illustrations/
Planches et/ou illustrations en couleur | <input type="checkbox"/> Quality of print varies/
Qualité inégale de l'impression |
| <input type="checkbox"/> Bound with other material/
Relié avec d'autres documents | <input type="checkbox"/> Includes supplementary material/
Comprend du matériel supplémentaire |
| <input type="checkbox"/> Tight binding may cause shadows or distortion
along interior margin/
La reliure serrée peut causer de l'ombre ou de la
distorsion le long de la marge intérieure | <input type="checkbox"/> Only edition available/
Seule édition disponible |
| <input type="checkbox"/> Blank leaves added during restoration may
appear within the text. Whenever possible, these
have been omitted from filming/
Il se peut que certaines pages blanches ajoutées
lors d'une restauration apparaissent dans le texte,
mais, lorsque cela était possible, ces pages n'ont
pas été filmées. | <input type="checkbox"/> Pages wholly or partially obscured by errata
slips, tissues, etc., have been refilmed to
ensure the best possible image/
Les pages totalement ou partiellement
obscurcies par un feuillet d'errata, une pelure,
etc., ont été filmées à nouveau de façon à
obtenir la meilleure image possible. |
| <input checked="" type="checkbox"/> Additional comments:/ [Printed ephemera] 1 sheet (verso blank)
Commentaires supplémentaires: | |

This item is filmed at the reduction ratio checked below/
Ce document est filmé au taux de réduction indiqué ci-dessous.

10X	12X	14X	16X	18X	20X	22X	24X	26X	28X	30X	32X
						✓					

The copy filmed here has been reproduced thanks to the generosity of:

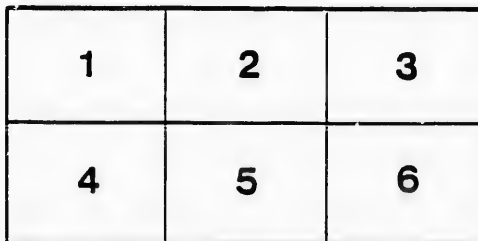
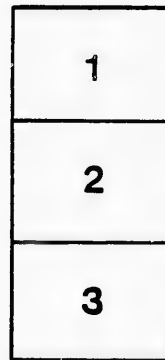
D. B. Weldon Library
University of Western Ontario
(Regional History Room)

The images appearing here are the best quality possible considering the condition and legibility of the original copy and in keeping with the filming contract specifications.

Original copies in printed paper covers are filmed beginning with the front cover and ending on the last page with a printed or illustrated impression, or the back cover when appropriate. All other original copies are filmed beginning on the first page with a printed or illustrated impression, and ending on the last page with a printed or illustrated impression.

The last recorded frame on each microfiche shall contain the symbol \rightarrow (meaning "CONTINUED") or the symbol ∇ (meaning "END"), whichever applies.

Maps, plates, charts, etc., may be filmed at different reduction ratios. Those too large to be entirely included in one exposure are filmed beginning in the upper left hand corner, left to right and top to bottom, as many frames as required. The following diagrams illustrate the method:



L'exemplaire filmé fut reproduit grâce à la générosité de:

D. B. Weldon Library
University of Western Ontario
(Regional History Room)

Les images suivantes ont été reproduites avec le plus grand soin, compte tenu de la condition et de la netteté de l'exemplaire filmé, et en conformité avec les conditions du contrat de filmage.

Les exemplaires originaux dont la couverture en papier est imprimée sont filmés en commençant par le premier plat et en terminant soit par la dernière page qui comporte une empreinte d'impression ou d'illustration, soit par le second plat, selon le cas. Tous les autres exemplaires originaux sont filmés en commençant par la première page qui comporte une empreinte d'impression ou d'illustration et en terminant par la dernière page qui comporte une telle empreinte.

Un des symboles suivants apparaîtra sur la dernière image de chaque microfiche, selon le cas: le symbole \rightarrow signifie "A SUIVRE", le symbole ∇ signifie "FIN".

Les cartes, planches, tableaux, etc., peuvent être filmés à des taux de réduction différents. Lorsque le document est trop grand pour être reproduit en un seul cliché, il est filmé à partir de l'angle supérieur gauche, de gauche à droite, et de haut en bas, en prenant le nombre d'images nécessaire. Les diagrammes suivants illustrent la méthode.

ails
du
odifier
une
image

rata
o

elure,
à

32X

Harper's Pedigree.

HARPER was bred by JOHN HARPER, Esq., of Kentucky, Brown Horse, got by Lexington out of

- 1st dam Margaret Morris, by imported Glencoe.
- 2nd " The Mule, by Medoc.
- 3rd " Jenny Slammerkin, by Tiger.
- 4th " Hannah Harris, afterwards Paragon, by imported Buzzard.
- 5th " Indiana, by Butler's Coleribus, son of imported Pantaloon.
- 6th " Jane Hunt, by Wade Hampton's Paragon.
- 7th " Moll, by imported Figure.
- 8th " Old Slammerkin, by imported Wildair.
- 9th " Imported Cub Mare, by Cub.
- 10th " Amaranthus, dam by Secord.
- 11th " by Starling, dam by Leede's Flash Fop.
- 12th " sister to Van's Little Partner, by Croft's Partner.
- 13th " sister to Guy, by Greyhound.
- 14th " Brown's Farewell, by Makeless.
- 15th " by Brimmer.
- 16th " by Place's White Turk.
- 17th " by Dodsworth.
- 18th " Layton Barb Mare.

PERFORMANCES.

HARPER was imported into Canada in 1863, and at the Spring Races held in Toronto, he beat the then Champions of the Canadian Turf, "Verge" and "Zig-zag" three mile heats for a purse of \$200; and again at St. Hyacinthe Fall Races he repeated his victory by beating "Verge," "Twilight," and others, three miles, in the fast time of 5.45, for a purse of \$300; and the next day he walked over the course for a purse of \$200, no horse opposing him. 1864—at Detroit fall races, two mile heats for \$700, he beat Kate Duncan, Rook Miranda, in 3.44. 1865—At London, June 8th, at two mile heats for \$200, he beat Rook Miranda Rouble and Julia Adams, in 3.48-3.46. At Three Rivers same month, he ran three successive days, four races, winning each day. First Day, 1½ mile heat, for \$125, he beat Seven Oaks, George and Reporter. Second Day, one mile heat, three in five, he beat Copee, Seven Okes and George for \$100, and also mile heats for \$125. Third day, at two mile heats for \$150, he beat Reporter, Minnie Watson and Copee—sawd very deep. Same month, in Hamilton, in a two mile dash, he beat Rouble, Sunshine and Muddy Corn. July, in Quebec, mud very deep, he won the first heat against Thunder, distancing Sunshine and Bowen. At St. Catharines, a 2½ mile dash for \$200, he won, beating Jimmey Kelly, Bowen and Julia Adams. 1865, at Guelph June Races, two mile heats, he beat Rook Miranda, for a purse of \$200. At Elkh, Indiana, two mile heats for \$300, he distanced Brighton, St. Deanson (by Rurick) and all others, 3.46. At Wisconsin, Agricultural State Fair, Sept. 14, 1867, he won the First Premium of \$500 as the best thorough-bred stallion; two mile heats, distancing Joe Davis, Rook Miranda and all other competitors, track very heavy in 3.50. Kalamazoo, mile heats, he won the first heat under a dead pull, but split his foot the next heat and had to be withdrawn. In the fall races in September, 1872, at Strathroy, HARPER beat Baron Rothschild, General Custer, Protection, Longueil and Brown Billy in the dash of 1½ miles, in 5 weeks' training, serving 11 mares. In the spring of 1870, at the same place, he beat Longueil, in a two mile dash; second day, mile heats, 3 in 5, beat Longueil, distancing Charlie Stuart. The foregoing is only a portion of HARPER'S performances but from it can be seen that he has won at both short and long distances, in fast time and carrying heavy weights. HARPER, as a stock getter, has not yet been surpassed in Canada. The first colt by him was Bay Jack, the winner of the Queen's Plate at London in 1869. The next of his stock, a two year old Blood Stallion, got the first prize at the Provincial Exhibition in Toronto, in 1870. HARPER'S stock have also taken prizes at County and Township Shows wherever exhibited. The next of his stock, Dr. Morton's Goldfinch Mare, sired by HARPER, won at Whitby, beating Swallow, the winner of the Queen's Plate at Hamilton; also won at Ottawa and Barrie, where she got the record of 1.47½, beating Nettie's best time. Hemisphere and Jim Christie, also of his Stock, are well known on the turf as winners. Hemisphere running half mile heats in 50 and 51 seconds. Christie has run the same heats and repeated in 49 seconds; he is admitted to have been the best Provincial bred horse in Canada.

