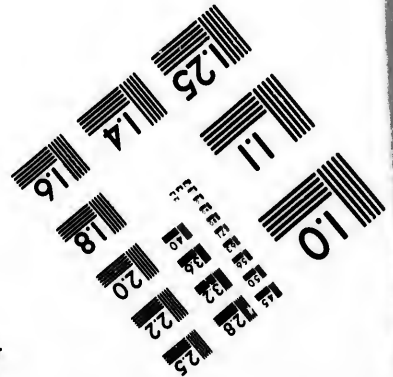
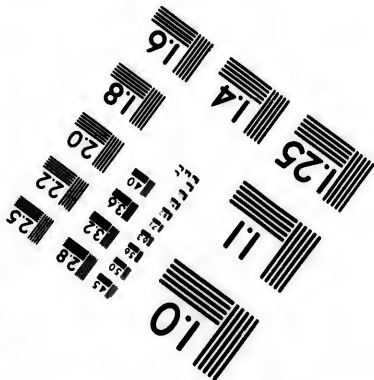
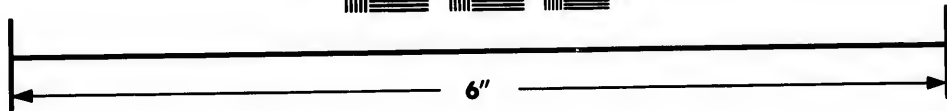
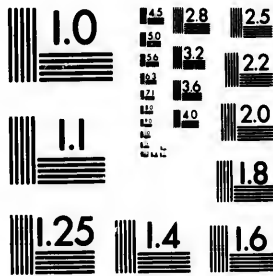


**IMAGE EVALUATION
TEST TARGET (MT-3)**



**Photographic
Sciences
Corporation**

23 WEST MAIN STREET
WEBSTER, N. Y. 14580
(716) 872-4503

1.5 1.8
2.0 2.2
2.5 2.8
3.0 3.2
3.6 4.0

**CIHM/ICMH
Microfiche
Series.**

**CIHM/ICMH
Collection de
microfiches.**



Canadian Institute for Historical Microreproductions / Institut canadien de microreproductions historiques

1.5 1.8
2.0 2.2
2.5 2.8
3.0 3.2
3.6 4.0

© 1984

Technical and Bibliographic Notes/Notes techniques et bibliographiques

The Institute has attempted to obtain the best original copy available for filming. Features of this copy which may be bibliographically unique, which may alter any of the images in the reproduction, or which may significantly change the usual method of filming, are checked below.

L'Institut a microfilmé le meilleur exemplaire qu'il lui a été possible de se procurer. Les détails de cet exemplaire qui sont peut-être uniques du point de vue bibliographique, qui peuvent modifier une image reproduite, ou qui peuvent exiger une modification dans la méthode normale de filmage sont indiqués ci-dessous.

- Coloured covers/
Couverture de couleur
- Covers damaged/
Couverture endommagée
- Covers restored and/or laminated/
Couverture restaurée et/ou pelliculée
- Cover title missing/
Le titre de couverture manque
- Coloured maps/
Cartes géographiques en couleur
- Coloured ink (i.e. other than blue or black)/
Encre de couleur (i.e. autre que bleue ou noire)
- Coloured plates and/or illustrations/
Planches et/ou illustrations en couleur
- Bound with other material/
Relié avec d'autres documents
- Tight binding may cause shadows or distortion
along interior margin./
La reliure serrée peut causer de l'ombre ou de la
distortion le long de la marge intérieure
- Blank leaves added during restoration may
appear within the text. Whenever possible, these
have been omitted from filming/
Il se peut que certaines pages blanches ajoutées
lors d'une restauration apparaissent dans le texte,
mais, lorsque cela était possible, ces pages n'ont
pas été filmées.
- Additional comments:/
Commentaires supplémentaires:

- Coloured pages/
Pages de couleur
- Pages damaged/
Pages endommagées
- Pages restored and/or laminated/
Pages restaurées et/ou pelliculées
- Pages discoloured, stained or foxed/
Pages décolorées, tachetées ou piquées
- Pages detached/
Pages détachées
- Showthrough/
Transparence
- Quality of print varies/
Qualité inégale de l'impression
- Includes supplementary material/
Comprend du matériel supplémentaire
- Only edition available/
Seule édition disponible
- Pages wholly or partially obscured by errata
slips, tissues, etc., have been refilmed to
ensure the best possible image/
Les pages totalement ou partiellement
obscurcies par un feuillet d'errata, une pelure,
etc., ont été filmées à nouveau de façon à
obtenir la meilleure image possible.

This item is filmed at the reduction ratio checked below/
Ce document est filmé au taux de réduction indiqué ci-dessous.

10X	12X	14X	16X	18X	20X	22X	24X	26X	28X	30X	32X
<input type="checkbox"/>	<input type="checkbox"/>	<input type="checkbox"/>	<input type="checkbox"/>	<input type="checkbox"/>	<input type="checkbox"/>	<input type="checkbox"/>	<input type="checkbox"/>	<input type="checkbox"/>	<input checked="" type="checkbox"/>	<input type="checkbox"/>	<input type="checkbox"/>

The copy filmed here has been reproduced thanks to the generosity of:

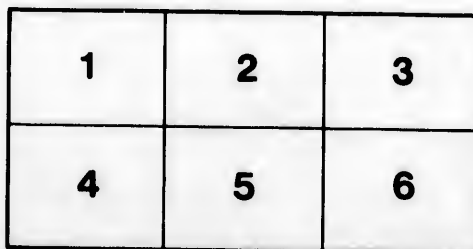
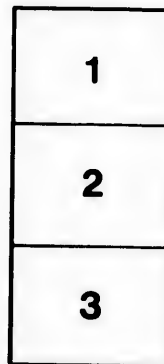
Library Division
Provincial Archives of British Columbia

The images appearing here are the best quality possible considering the condition and legibility of the original copy and in keeping with the filming contract specifications.

Original copies in printed paper covers are filmed beginning with the front cover and ending on the last page with a printed or illustrated impression, or the back cover when appropriate. All other original copies are filmed beginning on the first page with a printed or illustrated impression, and ending on the last page with a printed or illustrated impression.

The last recorded frame on each microfiche shall contain the symbol \rightarrow (meaning "CONTINUED"), or the symbol ∇ (meaning "END"), whichever applies.

Maps, plates, charts, etc., may be filmed at different reduction ratios. Those too large to be entirely included in one exposure are filmed beginning in the upper left hand corner, left to right and top to bottom, as many frames as required. The following diagrams illustrate the method:



L'exemplaire filmé fut reproduit grâce à la générosité de:

Library Division
Provincial Archives of British Columbia

Les images suivantes ont été reproduites avec le plus grand soin, compte tenu de la condition et de la netteté de l'exemplaire filmé, et en conformité avec les conditions du contrat de filmage.

Les exemplaires originaux dont la couverture en papier est imprimée sont filmés en commençant par le premier plat et en terminant soit par la dernière page qui comporte une empreinte d'impression ou d'illustration, soit par le second plat, selon le cas. Tous les autres exemplaires originaux sont filmés en commençant par la première page qui comporte une empreinte d'impression ou d'illustration et en terminant par la dernière page qui comporte une telle empreinte.

Un des symboles suivants apparaîtra sur la dernière image de chaque microfiche, selon le cas: le symbole \rightarrow signifie "A SUIVRE", le symbole ∇ signifie "FIN".

Les cartes, planches, tableaux, etc., peuvent être filmés à des taux de réduction différents. Lorsque le document est trop grand pour être reproduit en un seul cliché, il est filmé à partir de l'angle supérieur gauche, de gauche à droite, et de haut en bas, en prenant le nombre d'images nécessaire. Les diagrammes suivants illustrent la méthode.

rrata
o

pelure,
à

NWp
571.1V
L897:

INDUSTRIAL EXHIBITION.

The Executive Committee of the Industrial Exhibition invite the attention of their fellow-Colonists to the subjoined list of articles, crude and manufactured, specimens of which they deem desirable for transmission to England, to represent the Industrial Resources of these Colonies at the Great Industrial Exhibition in 1862.

They would direct public notice to one of the features of Industrial Exhibitions, viz.: that of *Rewards* for articles deemed worthy of special commendation for their goodness, for their usefulness, for their ingenuity, for their commercial value, or as showing the adaptability of materials not previously known, in supplying some common want.

Two methods of obtaining collections will be adopted:

- 1st. Specimens contributed to or purchased by the Association;
- 2d. Specimens lent to the Association, of which the care will be taken, and which will be returned to the owner, or disposed of to the best advantage in England. All articles will be labelled with the name and address of the donor or lender, and will be conveyed to England in the same state as sent to the Association here, who will bear the expense of their transmission.

The Executive Committee trust to see specimens of our Colonial produce, which, with care in their preparation, may enter into competition with similar articles of European or other Colonial production, with a fair chance of winning, if not a *Premium*, at all events that commendation from the gathering of all Nations at the Great International Exhibition, which would tend more than any other means to direct the attention of Emigrants towards these Colonies.

In reference to Canada, with which we have much in common here, Mr. Wallis, Head Master of the Government School of Art, Birmingham, and Deputy Commissioner of Juries in the Great Exhibition of 1851, speaking of the Exhibition of Art-Industry in Paris in 1855, says—"Probably the most complete display of Colonial produce, properly so called, is that of Canada. Improving upon the experience of 1851, and satisfied that the exhibition of its products on that occasion had been of immense value to its commerce; the Colonial Legislature voted a large sum of money. * * * * The result is a most useful and even tasteful display of trans-Atlantic utilities and products. Among the former may be quoted a deal window-frame, with sashes and Venetian shutters, manufactured by machinery for sixteen shillings English, and a door-frame, door and finishings of the same material, and manufacture in the same manner for about seventeen shillings. The workmanship is perfect in every respect. Such is the result of the application of machinery to the working of wood as practised in the United States and in Canada. The edge tools also of Canadian manufacture took a higher position in the opinion of the Jury than those of England and those stood relatively to us as high numerically, as those of France. The woods of various kinds, many of them highly ornamental, and all useful, carefully cut into slabs and polished, form another useful feature in the Canadian department," &c.

The Executive Committee confidently anticipate that a large amount of public attention will be centered on the exhibition of the products of Vancouver Island and British Columbia and they ask the zealous help of all towards worthily representing our native resources and aiding in the development of a land which in many ways is fitted to take a not unimportant part in the World's future history.

Contributions of articles named in the accompanying list, or of those which, though not enumerated, may be deemed of value, or communications respecting them are requested to be sent to the Office of the Industrial Exhibition, next door to the Post Office or to any member of the Sub-committees named on the next page.

SUB-COMMITTEE FOR INDUSTRIAL RESOURCES.

CAPT. E. STAMP,
A. DE COSMOS, Esq.,
H. P. P. CHEASE, Esq.,
W. J. McDONALD, Esq.,
S. FRANKLYN, Esq.,
DR. RATTRAY, R. N., H. M. S. TOPAZE, } VICTORIA.

SUB-COMMITTEE FOR MINERALS.

DR. FORBES, R. N., H. M. S. TOPAZE,
CAPT. GOSSETT, R. E., NEW WESTMINSTER,
MR. JUSTICE BEGRIE, Do.
C. J. NICOL, Esq., NANAIMO,
C. C. PENDERGAST, VICTORIA,
ROBT. BURNABY, Esq., Do.

SUB-COMMITTEE FOR INDIAN PRODUCTIONS.

DR. TOLMIE, VICTORIA,
DR. HELMCKEN, Do.
C. B. LENNARD, Esq., Do.
C. B. WOOD, Esq., R. N., H. M. S. HECATE,
DR. SEDDALL, R. E., NEW WESTMINSTER,
A. C. ANDERSON, Esq., VICTORIA.

SUB-COMMITTEE FOR AGRICULTURE.

T. J. SKINNER, Esq., VICTORIA,
KENNETH MCKENZIE, Esq., Do.
MAJOR FOSTER, Do.
JOHN COLES, Esq., Do.

LIST OF ARTICLES that may be Contributed from Vancouver Island and British Columbia.

AGRICULTURAL—

WHEAT,
BARLEY,
OATS,
PEAS,
BEANS,
RYE,
HOPS,
ROOTS, generally.
SEEDS, (Indigenous.)
FRUITS,
WOOL.

} Of these, not less than One Bushel of each.

Preparations of any kind adapted for Food, such as OATMEAL, PEARL BARLEY, DISCUIT, &c.
ISLAND MADE BEER OR ALE.
CHEESE, BUTTER, &c.
NATIVE HEMP, or FLAX, or any other Product adapted for Making Textile Fabrics.

FISH—

SALMON—Dried, Salted, Pickled, or Cured in any other way.
CODFISH " " " "
HERRING " " " "
SARDINES " " " "
HALIBUT " " " "
PLAWNS " " " "
HOULAKANS " " " "
OYSTERS " " " "
CLAMS " " " "
OIL, procured from the Whale, Dogfish, Houlakan, or Fish of any kind.

WOOD—

SPARS for Shipping or other purposes.
SECTIONS OF NATIVE TIMBER, Plain, Polished, or Varnished.
PLAIN AND ORNAMENTAL ARTICLES, Manufactured from Native Timber.
RESINS,
PITCH, &c.

STONE—

SLATE, Slabs of, or Manufactured into Useful or Ornamental Articles.
SANDSTONE " " " "
GRANITE " " " "
LIMESTONE " " " "
MARBLE " " " "
GRINDSTONES, WHETSTONES, &c., &c.

MINERALS—

GOLD.
COPPER.
SILVER.
PLUMBAGO.
COAL.
SALT—Natural and prepared.
CLAYS—Adapted for Potteries, Bricks, &c., and articles made from the same.
MANUFACTURED ARTICLES of Gold, Silver, Copper, &c., produced in these Colonies.
ARTICLES OF COLONIAL MANUFACTURE, of Foreign Gold, Silver, &c., Plumbago as Pencils.

FABRICS—

CURED HIDES AND SKINS—The same adapted for or manufactured into articles of daily use, such as Harness, Boots, Shoes, &c.

MISCELLANEOUS—

SPECIMENS OF HORN OF ELK, DEER, &c.—Articles manufactured of the same.
HARK—For Tanning purposes.
DYES.
MEDICAL PREPARATIONS.
PREPARATIONS OF ISLAND FRUITS—Such as Cranberries, Raspberries, Currants, Sallal, Oregon Grapes, Strawberry, Native Plum, &c.
PREPARATIONS OF ISLAND VEGETABLES.
PAINTINGS, showing the use of any new pigment.
PHOTOGRAPHIC PICTURES.
MODELS OF ISLAND FRUITS, VEGETABLES, &c., in Plaster or Wood.
NATURAL HISTORY SPECIMENS—Such as Birds, Animals, Insects, Fish, Plants, &c.

ARTICLES INDICATING INDIAN HANDICRAFT, VIZ—

MANUFACTURES OF SLATE,
WOOD,
SKINS,
HAIR—Such as Mats, &c.
CEDAR-BARK—Such as Hats, Tippets, Baskets, Fishing-lines, Rope, &c.,
HIDES,
GRASS.

