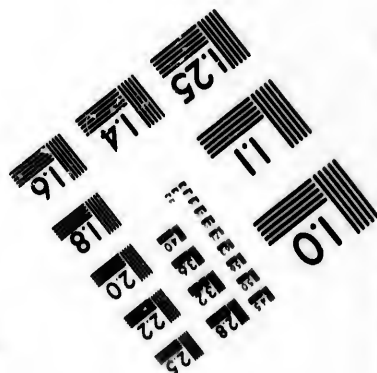
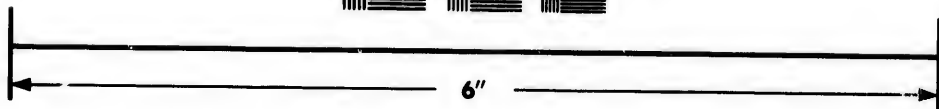
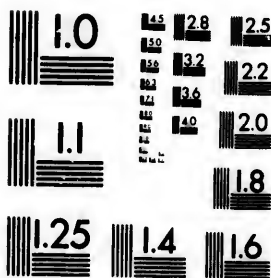


**IMAGE EVALUATION
TEST TARGET (MT-3)**



**Photographic
Sciences
Corporation**

23 WEST MAIN STREET
WEBSTER, N.Y. 14580
(716) 872-4503

**CIHM/ICMH
Microfiche
Series.**

**CIHM/ICMH
Collection de
microfiches.**



Canadian Institute for Historical Microreproductions / Institut canadien de microreproductions historiques

© 1984

Technical and Bibliographic Notes/Notes techniques et bibliographiques

The Institute has attempted to obtain the best original copy available for filming. Features of this copy which may be bibliographically unique, which may alter any of the images in the reproduction, or which may significantly change the usual method of filming, are checked below.

L'Institut a microfilmé le meilleur exemplaire qu'il lui a été possible de se procurer. Les détails de cet exemplaire qui sont peut-être uniques du point de vue bibliographique, qui peuvent modifier une image reproduite, ou qui peuvent exiger une modification dans la méthode normale de filmage sont indiqués ci-dessous.

- Coloured covers/
Couverture de couleur
- Covers damaged/
Couverture endommagée
- Covers restored and/or laminated/
Couverture restaurée et/ou peiliculée
- Cover title missing/
Le titre de couverture manque
- Coloured maps/
Cartes géographiques en couleur
- Coloured ink (i.e. other than blue or black)/
Encre de couleur (i.e. autre que bleue ou noire)
- Coloured plates and/or illustrations/
Planches et/ou illustrations en couleur
- Bound with other material/
Relié avec d'autres documents
- Tight binding may cause shadows or distortion along interior margin/
La reliure serrée peut causer de l'ombre ou de la distortion le long de la marge intérieure
- Blank leaves added during restoration may appear within the text. Whenever possible, these have been omitted from filming/
Il se peut que certaines pages blanches ajoutées lors d'une restauration apparaissent dans le texte, mais, lorsque cela était possible, ces pages n'ont pas été filmées.
- Additional comments:/
Commentaires supplémentaires:

- Coloured pages/
Pages de couleur
- Pages damaged/
Pages endommagées
- Pages restored and/or laminated/
Pages restaurées et/ou pelliculées
- Pages discoloured, stained or foxed/
Pages décolorées, tachetées ou piquées
- Pages detached/
Pages détachées
- Showthrough/
Transparence
- Quality of print varies/
Qualité inégale de l'impression
- Includes supplementary material/
Comprend du matériel supplémentaire
- Only edition available/
Seule édition disponible
- Pages wholly or partially obscured by errata slips, tissues, etc., have been refilmed to ensure the best possible image/
Les pages totalement ou partiellement obscurcies par un feuillet d'errata, une pelure, etc., ont été filmées à nouveau de façon à obtenir la meilleure image possible.

This item is filmed at the reduction ratio checked below/
Ce document est filmé au taux de réduction indiqué ci-dessous.

10X	14X	18X	22X	26X	30X
<input type="checkbox"/>	<input type="checkbox"/>	<input type="checkbox"/>	<input checked="" type="checkbox"/>	<input type="checkbox"/>	<input type="checkbox"/>
12X	16X	20X	24X	28X	32X

The copy filmed here has been reproduced thanks to the generosity of:

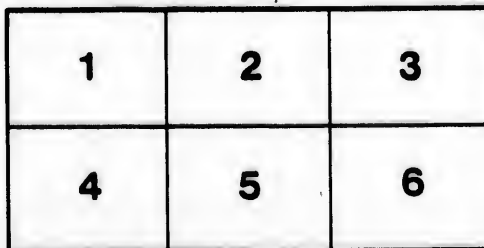
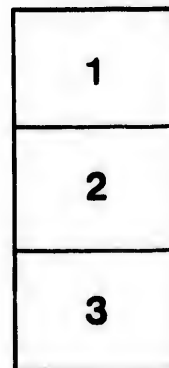
University of Alberta
Edmonton

The images appearing here are the best quality possible considering the condition and legibility of the original copy and in keeping with the filming contract specifications.

Original copies in printed paper covers are filmed beginning with the front cover and ending on the last page with a printed or illustrated impression, or the back cover when appropriate. All other original copies are filmed beginning on the first page with a printed or illustrated impression, and ending on the last page with a printed or illustrated impression.

The last recorded frame on each microfiche shall contain the symbol \rightarrow (meaning "CONTINUED"), or the symbol ∇ (meaning "END"), whichever applies.

Maps, plates, charts, etc., may be filmed at different reduction ratios. Those too large to be entirely included in one exposure are filmed beginning in the upper left hand corner, left to right and top to bottom, as many frames as required. The following diagrams illustrate the method:



L'exemplaire filmé fut reproduit grâce à la générosité de:

University of Alberta
Edmonton

Les images suivantes ont été reproduites avec le plus grand soin, compte tenu de la condition et de la netteté de l'exemplaire filmé, et en conformité avec les conditions du contrat de filmage.

Les exemplaires originaux dont la couverture en papier est imprimée sont filmés en commençant par le premier plat et en terminant soit par la dernière page qui comporte une empreinte d'impression ou d'illustration, soit par le second plat, selon le cas. Tous les autres exemplaires originaux sont filmés en commençant par la première page qui comporte une empreinte d'impression ou d'illustration et en terminant par la dernière page qui comporte une telle empreinte.

Un des symboles suivants apparaîtra sur la dernière image de chaque microfiche, selon le cas: le symbole \rightarrow signifie "A SUIVRE", le symbole ∇ signifie "FIN".

Les cartes, planches, tableaux, etc., peuvent être filmés à des taux de réduction différents. Lorsque le document est trop grand pour être reproduit en un seul cliché, il est filmé à partir de l'angle supérieur gauche, de gauche à droite, et de haut en bas, en prenant le nombre d'images nécessaire. Les diagrammes suivants illustrent la méthode.

ALBERTA RAILWAY AND COAL CO.
A Stockman's paradise. . . (189-).

"A STOCKMAN'S PARADISE"



GOOD MARKETS
AND
NO TAXES ON STOCK



EX LIBRIS
UNIVERSITATIS
ALBERTAENSIS



SF
267
566

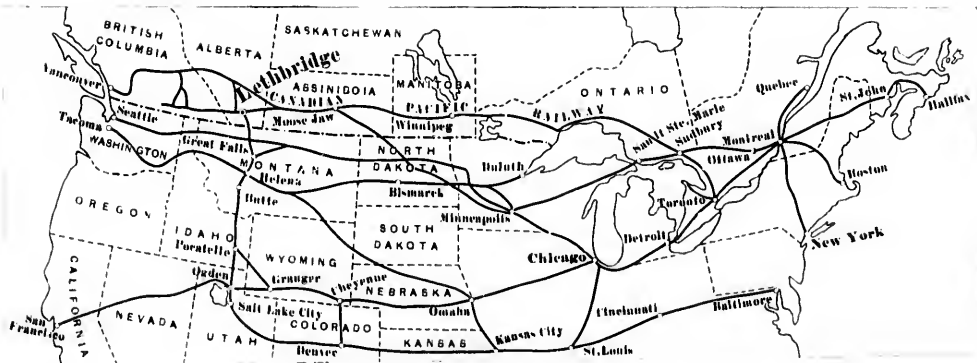
Rutherford Collection

THE HOME OF
LARGE FAT CATTLE.

2083309

FOR INFORMATION REGARDING THE
 LANDS DEALT WITH IN THIS BOOK,
 ADDRESS THE ALBERTA RAILWAY
 & COAL COMPANY OR THE CANADIAN
 NORTH-WEST IRRIGATION COMPANY,
 LETHBRIDGE, ALBERTA, CANADA. . . .

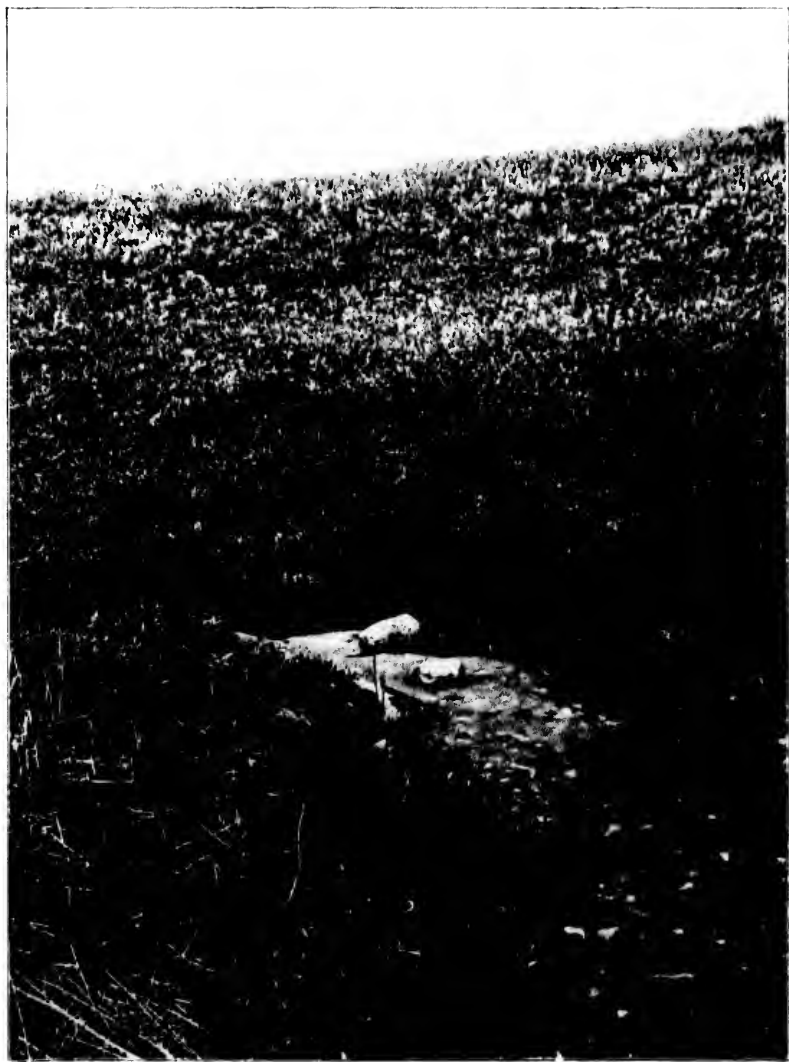
ROUTE TO LETHBRIDGE,
 CENTER OF MILK RIVER REGION.





on

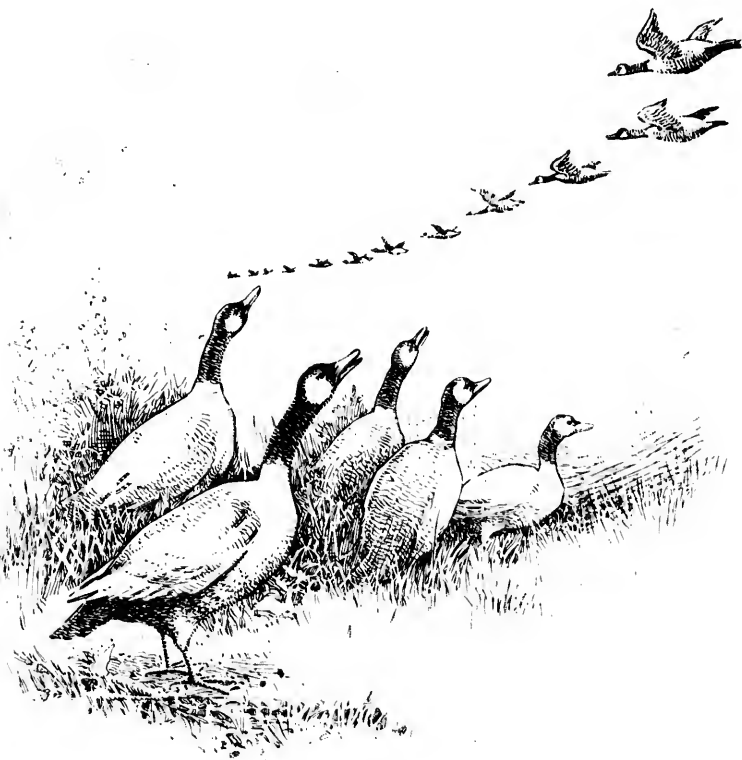
k



AN IDEAL SPRING.



THE OBJECT of this book is to draw the attention of Stockmen in the United States and elsewhere to the ranching lands of the Milk River Ridge District of Southern Alberta, Canada.



WILD GESE.



THE CUTS herein are from photographs taken in the Milk River Ridge District. The object being to give some idea of the appearance of the country, the grass, springs, lakes, etc.

RIGHT TO ACQUIRE AND HOLD LANDS
IN CANADA.

The Canadian laws are as liberal as any in the world. Aliens have equal rights with citizens in



"SQUEELED"

acquiring and holding property and citizenship is not pressed upon any man.

A well-known stockman of Salt Lake City, Utah, owns over 40,000 acres of Milk River Ridge lands, and successfully conducts thereon a large ranch in charge of a responsible man, whom he visits once or twice each year.

CLIMATE.

The climate of Southern Alberta may be said, without fear of contradiction, to be the finest and mildest in North Western Canada, and, indeed, the whole of Canada. The winter is very similar to the



WHERE SILVERS GROW FAT.



HORSES FORDING BEAVER RIVER.

M. H. CO.
BUFFALO.



"MEAT AND DRINK"

2

avored parts of Montana. Intense cold is not common, and is of short duration; the snow-falls rarely remain on the ground for any length of time; horses and cattle graze all the year round. The district has acquired the favorable reputation it bears owing to the "Chinooks," or warm winds, from the Pacific coast.

In summer, the duration of daylight extends for nineteen hours, with the result that crops more speedily mature, and the healthiness of the climate is much increased. Indeed, owing to its high altitude and dry climate, this district is regarded as a rival of that of Colorado.



THE MCINTYRE RANCHE CORRALS.

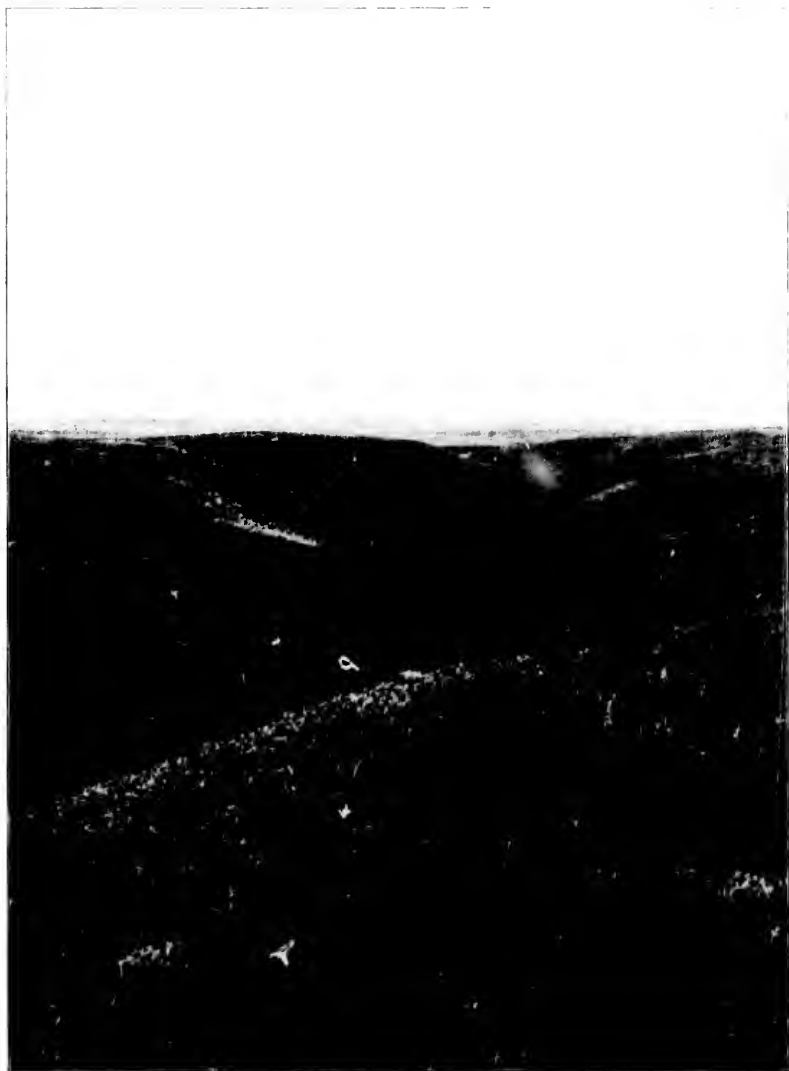
"THE FINEST GRASS COUNTRY IN AMERICA."

This is no extravagant statement. It is a fact. This expression, and "A Stockman's Paradise," have been used time and again by stockmen coming into the district for the first time, having had no knowledge of the possibilities of ranching outside of the United States. If Southern Alberta was better known, then this little book would remain unwritten.

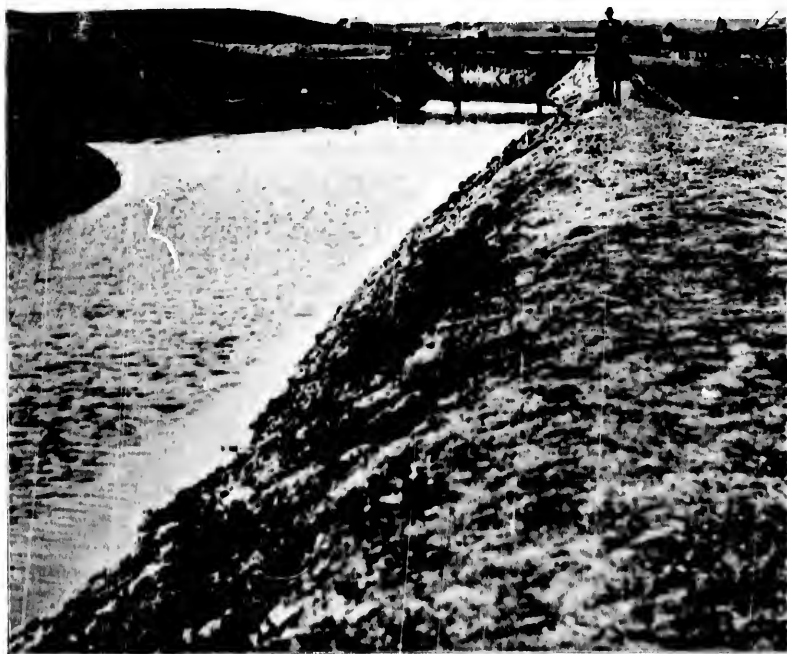
Looking back about twenty-five years, this region was an immense Buffalo range; but the only traces now left of "The Monsters of the Plains" are the numerous trails or paths worn down into the earth by their passage, especially to and from water.



A TEMPTING RANGE.



TENANTLESS.



CANAL OPPOSITE MAGRAH.

The value of the district for stock-raising purposes has long since been demonstrated. Ranching on a large scale have been conducted here since the early eighties, and to-day great herds of range cattle roam at will over these seemingly boundless pastures. The clear, light air, dry atmosphere, the pure water, cool nights and the nutritious buffalo and bunch grasses, produce an animal full of stamina and health, free from lung or bone disease, and when taken off the range the cattle are fit for any butcher's shop in the world. It is not necessary to point out to stockmen the profits to be derived from raising cattle. Small quantities of hay are put up by some ranchers for the



AN ABANDONED BUFFALO HAUNT.

weaker stock during inclement weather in the winter. Three and four-year-old steers bring from \$42 to \$50 per head. Last year 1,000 head were sold from one ranch for \$50,000.

LOCATION OF LANDS.

Owing to the rapidity with which vacant lands throughout the United States are being settled upon, large areas for stock-raising purposes are yearly becoming more difficult to obtain, and, in consequence thereof, it is only a question of a few years when such lands will be very valuable.



VALLEY OF ST. MARY'S RIVER.



A SEA OF GRASS.



A MAMMOTH C.T.

Milk River is a small stream about thirty feet wide and from one to three feet deep. It rises in Montana at the eastern base of the Rocky Mountains, and flowing northward into Alberta, Canada, it turns and runs eastward about 100 miles (never reaching a greater distance than ten miles north of the international boundary), and reenters Montana and becomes one of the feeders of the Missouri River.

The Milk River Ridge is a low range of hills, lying to the north of and extending along the Milk River about thirty miles; having a width from north to south of about eighteen miles.



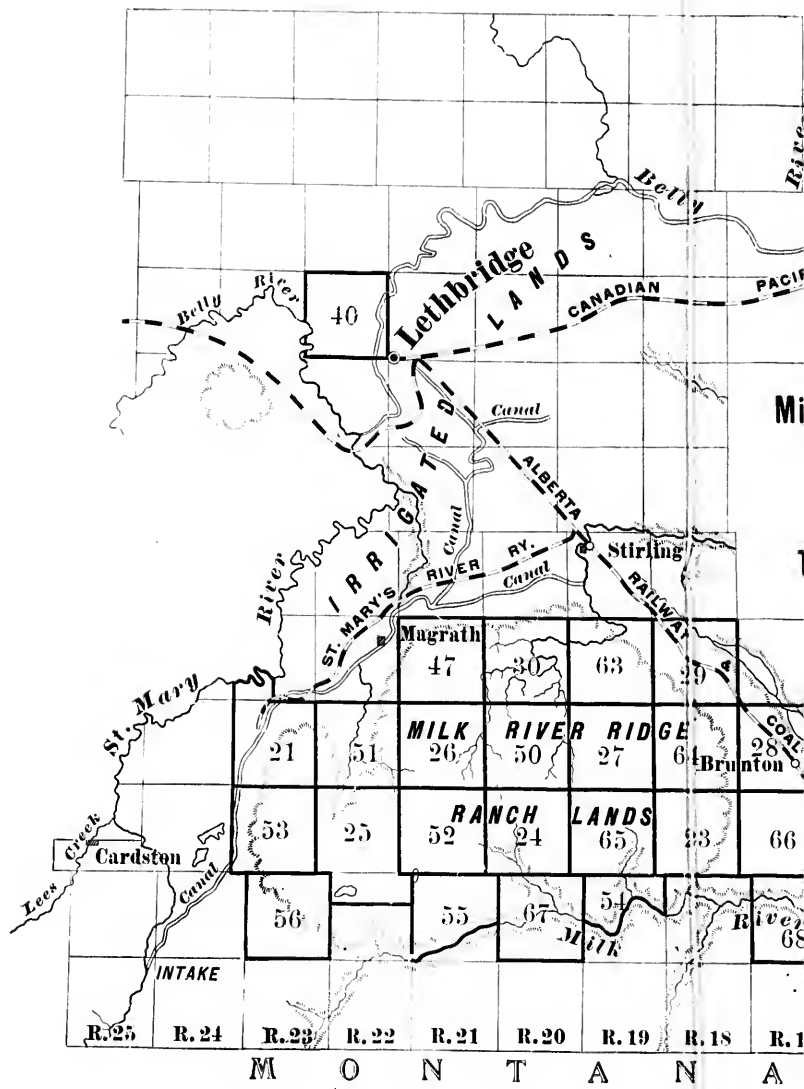
A SNAP SHOT.

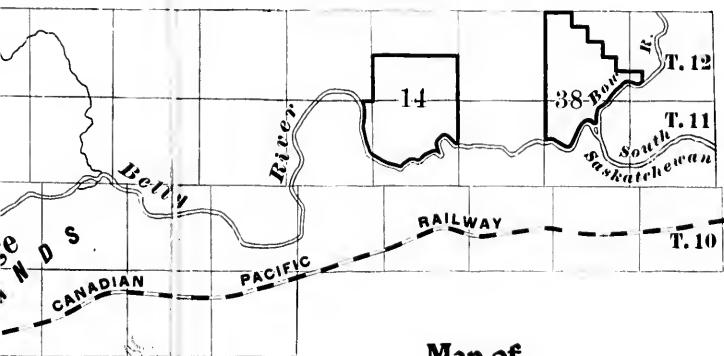
The Milk River Ridge District is preëminently suited for stock-raising purposes. It produces a luxuriant growth of grass, yielding as high as one ton per acre, which cures on the stem, retaining its nutritious properties the entire year. The snow is never deep enough to prevent the animals from eating the grass off the ground. Good water, in lakes and springs, is to be had in abundance.

Cattle thieving and other acts of vandalism are comparatively rare in the Northwest Territories. The Government has had a force known as the Northwest Mounted Police stationed in the country for the past twenty-five years. These "Riders of the



NATURE'S MEADOW.





Map of
Milk River Ridge Grazing Lands.

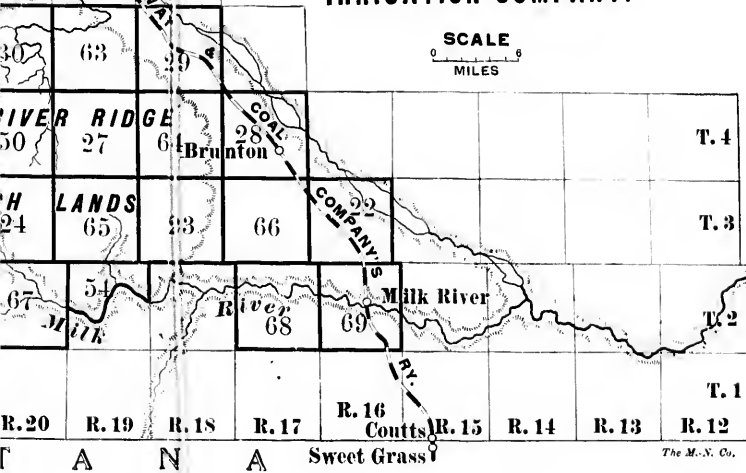
— ALSO —

Irrigated Lands

— OF —

THE CANADIAN NORTH-WEST
IRRIGATION COMPANY.

SCALE
0 1 2 3 4 5 6
MILES



The M. N. Co.

Plains" are located in small detachments throughout the country, and are constantly patrolling it; thereby rendering lawlessness practically impossible, and earning for themselves a reputation which has become world famous.

HOW TO OBTAIN LANDS.

The Canadian Northwest Irrigation Company and the Alberta Railway & Coal Company own the principal portions of the Milk River Ridge District, as well as large areas of other choice ranching lands in Southern Alberta. These lands are offered for



THE DAY'S REST.

ut
by
n-
ne

sale in blocks containing from 10,000 to 100,000 acres; and for convenience of reference, the blocks, consisting of townships, and in certain instances parts of townships, are numbered on the map herewith. Prices and terms may be had on application to either of the companies named at their offices in Lethbridge, Alberta, Canada.

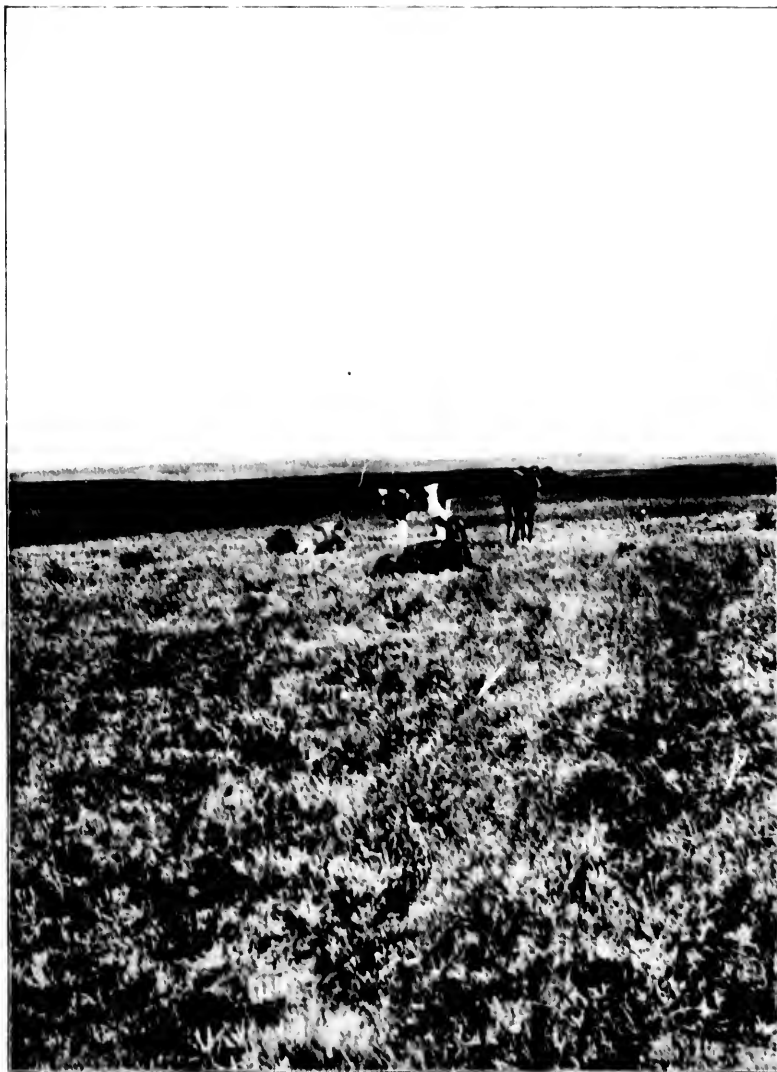
IRRIGATED LANDS.

nd
he
ct,
ds
or

Skirting the Milk River Ridge, on the north, is the Canadian Northwest Irrigation Company's Canal System. It consists of over 100 miles of waterways,



HAS HE AN EQUAL?



GROWING DAY AND NIGHT



WHAT MORE IS NEEDED?

capable of irrigating 100,000 acres of low-lying lands under the ridge. These lands will be offered at moderate figures, and stockmen desiring to guard against the risk of hard winters can grow hay on an irrigated farm within a reasonable distance from their ranch. At present, ranch lands may be had extending down to the canal system.

MARKETS.

There is an unlimited market for fat cattle on the western coast, the great mining districts of British Columbia, which adjoin Alberta to the west, and



ST. MARY'S RIVER—INTAKE OF CANAL.

especially in Europe, at a rate that will abundantly satisfy investors.

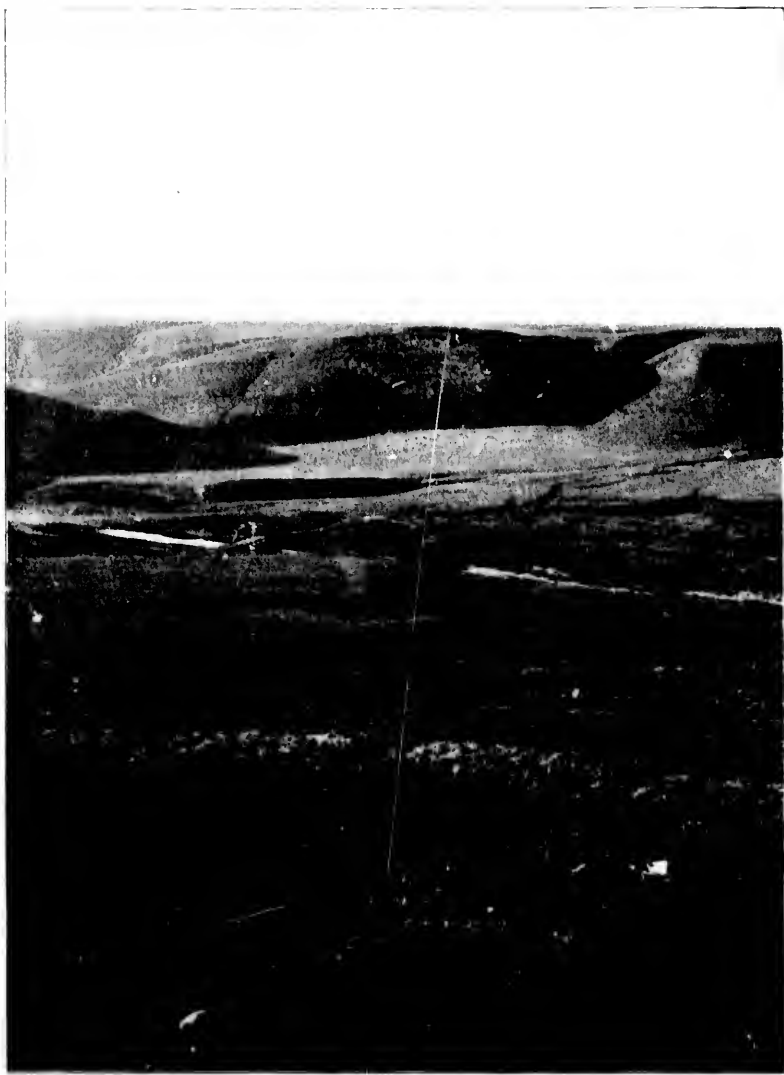
Southern Alberta range cattle are looked upon most favorably in the English markets.

TAXES.

There are no taxes of any kind on range stock. A light tax of one and one-fourth cents per acre is levied on lands by the local government, known as "The Local Improvement Tax." It is raised for the purpose of road improvement, prairie-fire guards, and such other purposes as will benefit the district within



BUFFALOES — A VISION OF THE PAST.



A SHUTTERED FAMILY.



ON ROAD TO STOCKYARDS.

which the tax is collected. In the towns and settlements there is a school tax. An excellent school system is in force, supported to the extent of about seventy-five per cent. of running expenses, by the local government.

FUEL.

The country is underlaid with an excellent bituminous coal at a depth varying from seventy-five to 300 feet below the surface of the ground. The coal seams crop out at various points along the river valleys, and coal has been found in the Milk River Ridge.



HUNTING SCENE — PARTY OF LETHBRIDGE SPORTSMEN.

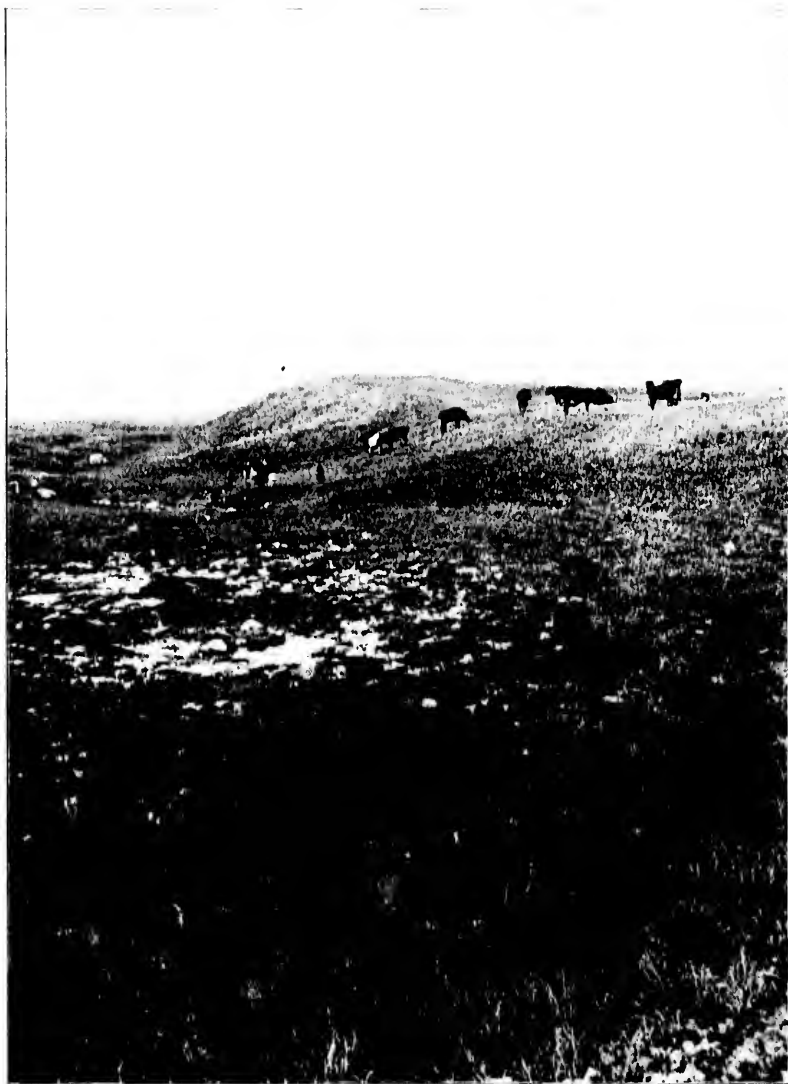
LUMBER.

The average prices of lumber, etc., at Lethbridge are as follows:

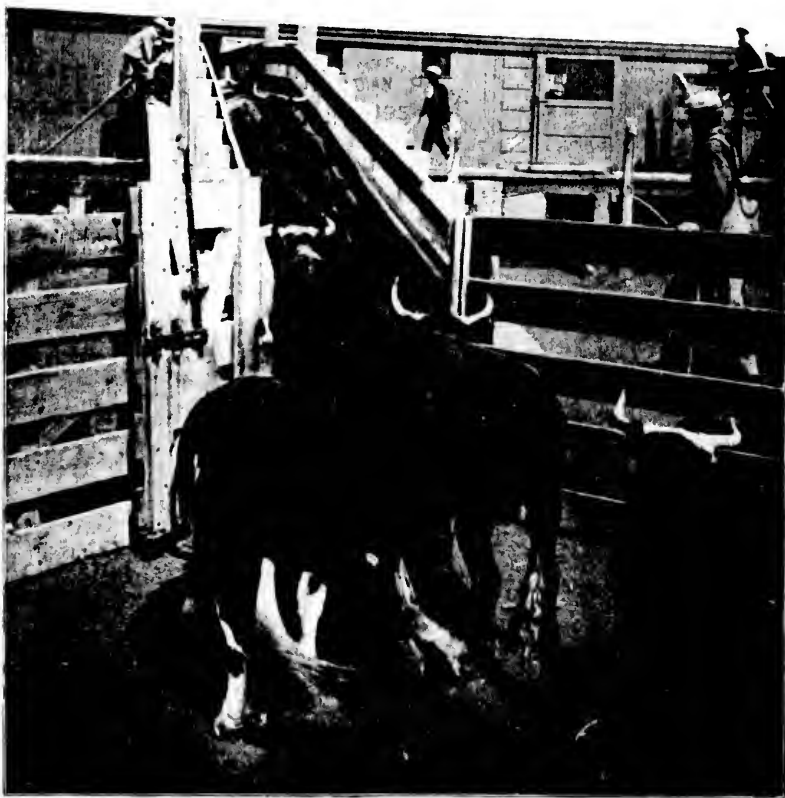
Rough Lumber, per M.	\$16.00
Dimension Lumber, 2 x 4, 2 x 12, No. 1,	15.50
Dimension Lumber, 2 x 4, 2 x 12, No. 2,	18.00
Fir Flooring,	27.00
Fir and Pine Siding,	27.00
6-Ship-lap,	18.00
No. 1 Coast Cedar Shingles, per M,	2.85
No. 2 Coast Cedar Shingles, per M,	2.50
Tar Paper, best, per roll,	1.00
Building Paper, per roll,75
Lath, per M.	4.75
Cedar Posts,13
Bricks, per M.	10.00



LAKE IN RIDGE.



AFTER A MIDDAY DRINK



LOADING CATTLE, LEITHBRIDGE STOCK YARDS

FISHING AND HUNTING.

Wild geese and ducks are always to be found in the small lakes in the fall in myriads. Prairie chickens are very plentiful within a distance of from fifteen to thirty miles westward from the Milk River Ridge District; the finest trout and other fishing may be had in streams and rivulets in the foothills of the Rocky Mountains, and antelopes still abound on the plains adjacent thereto. The grandeur and beauty of these mountains in Alberta cannot be excelled. All these advantages combined make this region truly a "sportsman's paradise."

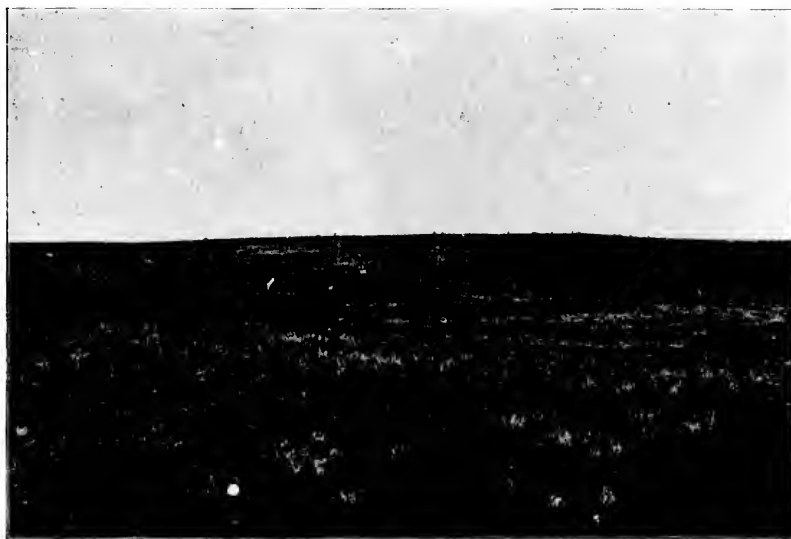


GALE HOSPITAL, LETHBRIDGE.

CUSTOMS REGULATIONS.

Stock coming into Canada from the United States is examined at the boundary by a Veterinary Inspector, and, if found free from disease, will be admitted upon payment of a duty of twenty per cent., based on a fair value of the stock at the shipping point.

Free entries may be had on from sixteen to thirty-two head of stock, and on wearing apparel, household furniture, agricultural and other implements that have been in the possession of the settler for at least six months before his arrival in Canada.



WHY SHOULD NOT THEY BE HAPPY ?



“RIDERS OF THE PLAINS”—CANADIAN NORTHWEST MOUNTED POLICE.



CANAL AND POL-HOLE VALLEY.



EXPANSE OF PRAIRIE TRIBUTARY TO CANAL.

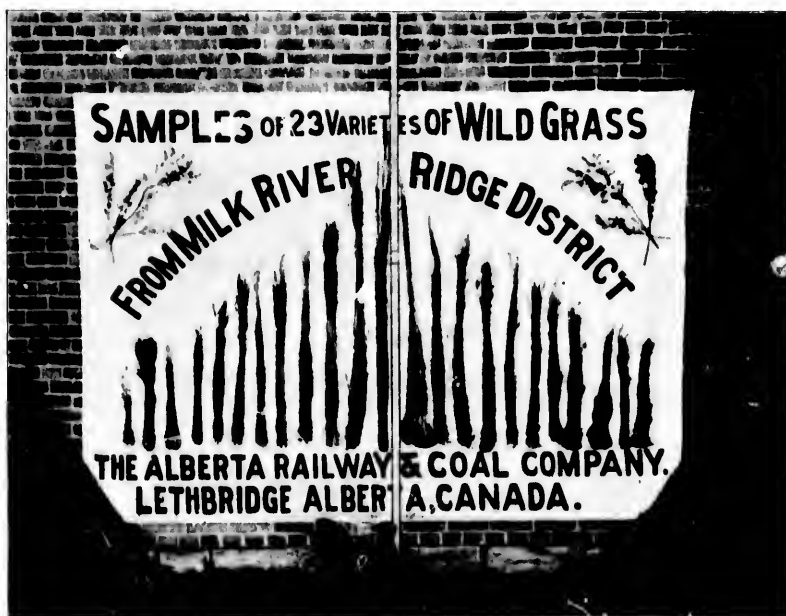
SOUTHERN ALBERTA, HOW REACHED.

Lethbridge, a town of over 2,500 inhabitants, is the most central point. It has excellent railway facilities, namely:

From all points in Canada, via the Canadian Pacific Railway.

From Ogden, Utah, thirty-six hours, via the Oregon Short Line, Great Northern, and the Great Falls & Canada railways.

From St. Paul, Minn., thirty-six hours, via the Great Northern and Great Falls & Canada railways.



SAMPLE OF WILD GRASSES.



CENTRAL SCHOOL - THERMIDOR.

