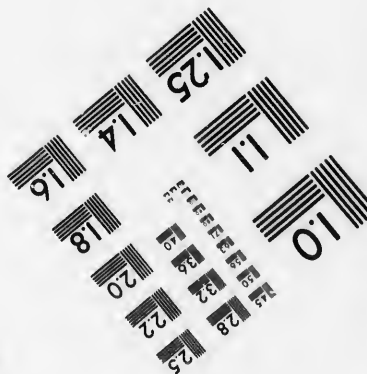
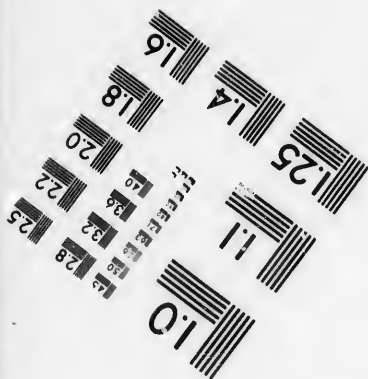
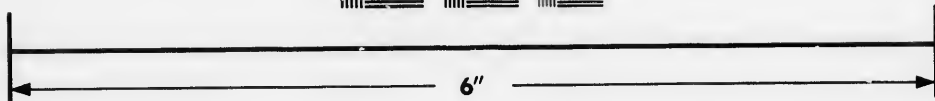
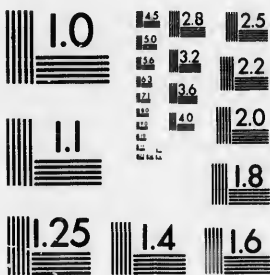


**IMAGE EVALUATION
TEST TARGET (MT-3)**



**Photographic
Sciences
Corporation**

23 WEST MAIN STREET
WEBSTER, N.Y. 14580
(716) 872-4503

14
16
18
20
22
25

**CIHM/ICMH
Microfiche
Series.**

**CIHM/ICMH
Collection de
microfiches.**



Canadian Institute for Historical Microreproductions / Institut canadien de microreproductions historiques

11
10
9
8
7
6
5
4
3
2
1

© 1987

Technical and Bibliographic Notes/Notes techniques et bibliographiques

The Institute has attempted to obtain the best original copy available for filming. Features of this copy which may be bibliographically unique, which may alter any of the images in the reproduction, or which may significantly change the usual method of filming, are checked below.

L'Institut a microfilmé le meilleur exemplaire qu'il lui a été possible de se procurer. Les détails de cet exemplaire qui sont peut-être uniques du point de vue bibliographique, qui peuvent modifier une image reproduite, ou qui peuvent exiger une modification dans la méthode normale de filmage sont indiqués ci-dessous.

- | | |
|--|--|
| <input type="checkbox"/> Coloured covers/
Couverture de couleur | <input type="checkbox"/> Coloured pages/
Pages de couleur |
| <input type="checkbox"/> Covers damaged/
Couverture endommagée | <input type="checkbox"/> Pages damaged/
Pages endommagées |
| <input type="checkbox"/> Covers restored and/or laminated/
Couverture restaurée et/ou pelliculée | <input type="checkbox"/> Pages restored and/or laminated/
Pages restaurées et/ou pelliculées |
| <input type="checkbox"/> Cover title missing/
Le titre de couverture manque | <input type="checkbox"/> Pages discoloured, stained or foxed/
Pages décolorées, tachetées ou piquées |
| <input type="checkbox"/> Coloured maps/
Cartes géographiques en couleur | <input type="checkbox"/> Pages detached/
Pages détachées |
| <input type="checkbox"/> Coloured ink (i.e. other than blue or black)/
Encre de couleur (i.e. autre que bleue ou noire) | <input checked="" type="checkbox"/> Showthrough/
Transparence |
| <input type="checkbox"/> Coloured plates and/or illustrations/
Planches et/ou illustrations en couleur | <input type="checkbox"/> Quality of print varies/
Qualité inégale de l'impression |
| <input type="checkbox"/> Bound with other material/
Relié avec d'autres documents | <input type="checkbox"/> Includes supplementary material/
Comprend du matériel supplémentaire |
| <input type="checkbox"/> Tight binding may cause shadows or distortion
along interior margin/
La reliure serrée peut causer de l'ombre ou de la
distorsion le long de la marge intérieure | <input type="checkbox"/> Only edition available/
Seule édition disponible |
| <input type="checkbox"/> Blank leaves added during restoration may
appear within the text. Whenever possible, these
have been omitted from filming/
Il se peut que certaines pages blanches ajoutées
lors d'une restauration apparaissent dans le texte,
mais, lorsque cela était possible, ces pages n'ont
pas été filmées. | <input type="checkbox"/> Pages wholly or partially obscured by errata
slips, tissues, etc., have been refilmed to
ensure the best possible image/
Les pages totalement ou partiellement
obscurcies par un feuillet d'errata, une pelure,
etc., ont été filmées à nouveau de façon à
obtenir la meilleure image possible. |
| <input checked="" type="checkbox"/> Additional comments: /
Commentaires supplémentaires: | [Printed ephemera] 1 sheet (verso blank) |

This item is filmed at the reduction ratio checked below/
Ce document est filmé au taux de réduction indiqué ci-dessous.

10X	14X	18X	22X	26X	30X
<input type="checkbox"/>	<input type="checkbox"/>	<input type="checkbox"/>	<input checked="" type="checkbox"/>	<input type="checkbox"/>	<input type="checkbox"/>
12X	16X	20X	24X	28X	32X

The copy filmed here has been reproduced thanks to the generosity of:

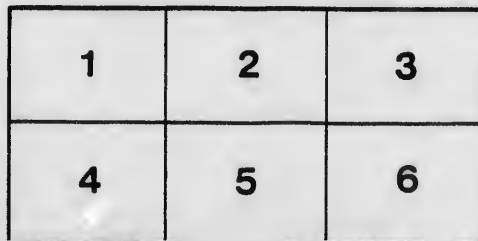
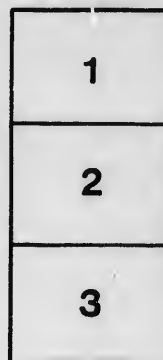
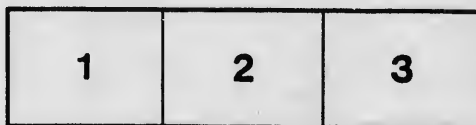
Manuscript Division
Public Archives of Canada

The images appearing here are the best quality possible considering the condition and legibility of the original copy and in keeping with the filming contract specifications.

Original copies in printed paper covers are filmed beginning with the front cover and ending on the last page with a printed or illustrated impression, or the back cover when appropriate. All other original copies are filmed beginning on the first page with a printed or illustrated impression, and ending on the last page with a printed or illustrated impression.

The last recorded frame on each microfiche shell contain the symbol \rightarrow (meaning "CONTINUED"), or the symbol ∇ (meaning "END"), whichever applies.

Maps, plates, charts, etc., may be filmed at different reduction ratios. Those too large to be entirely included in one exposure are filmed beginning in the upper left hand corner, left to right and top to bottom, as many frames as required. The following diagrams illustrate the method:



L'exemplaire filmé fut reproduit grâce à la générosité de:

Division des manuscrits
Archives publiques du Canada

Les images suivantes ont été reproduites avec le plus grand soin, compte tenu de la condition et de la netteté de l'exemplaire filmé, et en conformité avec les conditions du contrat de filmage.

Les exemplaires originaux dont la couverture en papier est imprimée sont filmés en commençant par le premier plat et en terminant soit par la dernière page qui comporte une empreinte d'impression ou d'illustration, soit par le second plat, selon le cas. Tous les autres exemplaires originaux sont filmés en commençant par la première page qui comporte une empreinte d'impression ou d'illustration et en terminant par la dernière page qui comporte une telle empreinte.

Un des symboles suivants apparaîtra sur la dernière image de chaque microfiche, selon le cas: le symbole \rightarrow signifie "A SUIVRE", le symbole ∇ signifie "FIN".

Les cartes, planches, tableaux, etc., peuvent être filmés à des taux de réduction différents. Lorsque le document est trop grand pour être reproduit en un seul cliché, il est filmé à partir de l'angle supérieur gauche, de gauche à droite, et de haut en bas, en prenant le nombre d'images nécessaire. Les diagrammes suivants illustrent la méthode.



PROGRAMME OF FIRE WORKS

IN HONOR OF THE VISIT OF

His Royal Highness The Prince of Wales,

TO BE SET OFF ON THE ESPLANADE, AT

QUEBEC, Aug. 20, 1860.

The Fire Works from the Consolidated Laboratories of
Messrs. J. G. Hovey & Co. and A. LANERGAN & Co. of Boston.

From Sunset until 9 o'clock will be fired, without intermission,

ROCKETS AND FLORAL ARTILLERY SHELLS

Of the various garnitures, from a Heavy Battery of Mortars, displaying colored bouquets of fire at a great altitude.

AT NINE O'CLOCK WILL BE FIRED :

1—THE INTRODUCTORY PIECE

Consisting of an extended illumination of crimson, emerald, orange, blue and violet fires.

2—GRAND WELCOME TO H. R. H. THE PRINCE OF WALES TO CANADA.

The Inscription "SOYEZ LE BIENVENU," appears with a simultaneous flight of Rockets, mutating to a Battery of Roman Candles, with colored Stars—the whole terminating in a grand Battery of Floral Shells and flights of Rockets.

3—WELCOME OF HIS ROYAL HIGHNESS TO QUEBEC.

The CIVIC ARMS, with the inscription "WELCOME TO THE PRINCE OF WALES," terminating with a *Feu de Joie*.

The CIVIC ARMS, with the inscription "WELCOME TO THE PRINCE OF WALES," terminating with a *Feu de Joie*.



The CIVIC ARMS, with the inscription "WELCOME TO THE PRINCE OF WALES," terminating with a *Feu de Joie*.

4—THE CROWN OF ENGLAND.

Above the motto, "GOD SAVE THE QUEEN," is seen the Crown of England, studded with jewels, with the letters "V. R." and the insignia of Royalty upon either side—the whole encircled by a wreath of Maple leaves of brilliant emerald fire, in imitation of nature. A Royal Salute from a Halo of Glory around the Crown, terminates the piece.

5—DISPLAY OF CHINESE CROSS-FIRES.

With colored revolving centres, mutating from a revolving base of novel scroll wheels—the whole terminating with a GRAND FEU DE JOIE OF 100 ROCKETS.

6—THE ROSE OF ENGLAND.

Commences with revolving fires of crimson and green, and suddenly mutates to a representation of the Rose of England, composed of lance work; again changing, the piece closes amid a shower of Stars from a Battery of Roman Candles and a large flight of Rockets.

7—DISPLAY OF ARTILLERY SHELLS.

From a heavy Battery of Mortars, showing, at an altitude of one thousand feet, the various fires in Pyrotechny.

8—TRIBUTE TO AGRICULTURE AND HORTICULTURE.

Shewing a Bee-Hive as an emblem of industry, with a Sheaf of Wheat, Plough, Implements and Cornucopias as emblems of plenty; and beneath, the inscription, "LA PAIX & L'ABONDANCE;" closing with a flight of Floral Shell.

9—FOUNTAIN PIECE.

Revolving Fountains, sending forth showers of spray, ornamented with colored reflections; closing with heavy reports and a Battery of Floral Shells.

10—THE PRINCE OF WALES' FEATHER.

A representation, with the motto, "ICH DIEN," and beneath, is the inscription, "HONOR TO THE PRINCE." A *Feu de Joie* of numerous Rockets and Floral Shells closes this design.

11—TRIBUTE TO THE DUKE OF NEWCASTLE.

Arms of the Duke of Newcastle, with the motto "LOYAUTE N'HONTE,"; underneath, the inscription, "NEWCASTLE AND COLONIES."

12—TRIBUTE TO EARL ST. GERMAIN.

Arms of the Earl St. Germain, with motto.

13—GRAND ILLUMINATION OF BENGAL LIGHTS.

Introducing the finale and making the scene as light as day.

GRAND TABLEAU AND FINALE.

Consisting of the Royal Coat of Arms, portraying in colored lancework, with the motto "Dieu Et Mon Droit" and "Honi Soit Qui Mal y Pense," and to the right and left of the Crown British Emblems emblematic of protection to British trade,—the names of "Victoria and Albert," the whole surmounted by Brilliant Haloes of Glory.

Upon the right of this central piece appear the Arms of Canada with the motto "Rendre le Peuple Meilleur" and upon the left the Arms of Liverpool, with the motto "Deus Nobis Hæc Otia Fecit."

Above the Locomotive and Steamship is shown the inscription "Canada Inland Trade," and "Royal Mail Service."

The whole forming a large extended Tableau, closing amid Batteries of Floral Shells, Batteries of Serpent Mines, Batteries of Colored Roman Candles, and simultaneous flights of several hundred Rockets in honor of HIS ROYAL HIGHNESS THE PRINCE OF WALES.

God Save the Queen !!





