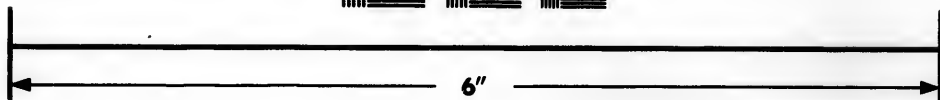
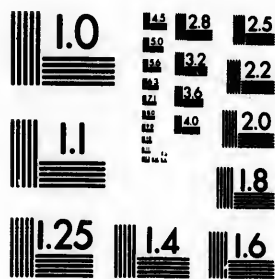


**IMAGE EVALUATION
TEST TARGET (MT-3)**



**Photographic
Sciences
Corporation**

23 WEST MAIN STREET
WEBSTER, N.Y. 14580
(716) 872-4503

**CIHM/ICMH
Microfiche
Series.**

**CIHM/ICMH
Collection de
microfiches.**



Canadian Institute for Historical Microreproductions / Institut canadien de microreproductions historiques

© 1986

Technical and Bibliographic Notes/Notes techniques et bibliographiques

The Institute has attempted to obtain the best original copy available for filming. Features of this copy which may be bibliographically unique, which may alter any of the images in the reproduction, or which may significantly change the usual method of filming, are checked below.

L'Institut a microfilmé le meilleur exemplaire qu'il lui a été possible de se procurer. Les détails de cet exemplaire qui sont peut-être uniques du point de vue bibliographique, qui peuvent modifier une image reproduite, ou qui peuvent exiger une modification dans la méthode normale de filmage sont indiqués ci-dessous.

- | | |
|--|--|
| <input type="checkbox"/> Coloured covers/
Couverture de couleur | <input type="checkbox"/> Coloured pages/
Pages de couleur |
| <input type="checkbox"/> Covers damaged/
Couverture endommagée | <input type="checkbox"/> Pages damaged/
Pages endommagées |
| <input type="checkbox"/> Covers restored and/or laminated/
Couverture restaurée et/ou pelliculée | <input type="checkbox"/> Pages restored and/or laminated/
Pages restaurées et/ou pelliculées |
| <input type="checkbox"/> Cover title missing/
Le titre de couverture manque | <input checked="" type="checkbox"/> Pages discoloured, stained or foxed/
Pages décolorées, tachetées ou piquées |
| <input type="checkbox"/> Coloured maps/
Cartes géographiques en couleur | <input type="checkbox"/> Pages detached/
Pages détachées |
| <input type="checkbox"/> Coloured ink (i.e. other than blue or black)/
Encre de couleur (i.e. autre que bleue ou noire) | <input checked="" type="checkbox"/> Showthrough/
Transparence |
| <input type="checkbox"/> Coloured plates and/or illustrations/
Planches et/ou illustrations en couleur | <input type="checkbox"/> Quality of print varies/
Qualité inégale de l'impression |
| <input type="checkbox"/> Bound with other material/
Relié avec d'autres documents | <input type="checkbox"/> Includes supplementary material/
Comprend du matériel supplémentaire |
| <input type="checkbox"/> Tight binding may cause shadows or distortion
along interior margin/
La reliure serrée peut causer de l'ombre ou de la
distorsion le long de la marge intérieure | <input type="checkbox"/> Only edition available/
Seule édition disponible |
| <input type="checkbox"/> Blank leaves added during restoration may
appear within the text. Whenever possible, these
have been omitted from filming/
Il se peut que certaines pages blanches ajoutées
lors d'une restauration apparaissent dans le texte,
mais, lorsque cela était possible, ces pages n'ont
pas été filmées. | <input type="checkbox"/> Pages wholly or partially obscured by errata
slips, tissues, etc., have been refilmed to
ensure the best possible image/
Les pages totalement ou partiellement
obscurcies par un feuillet d'errata, une pelure,
etc., ont été filmées à nouveau de façon à
obtenir la meilleure image possible. |
| <input checked="" type="checkbox"/> Additional comments: [Printed ephemera] 1 sheet (verso blank)
Commentaires supplémentaires: | |

This item is filmed at the reduction ratio checked below/
Ce document est filmé au taux de réduction indiqué ci-dessous.

10X	12X	14X	15X	16X	18X	20X	22X	24X	26X	28X	30X	32X
								/				

The copy filmed here has been reproduced thanks to the generosity of:

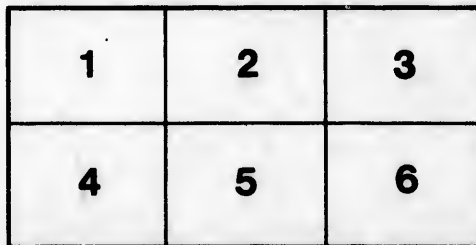
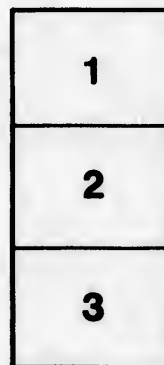
Library of the Public
Archives of Canada

The images appearing here are the best quality possible considering the condition and legibility of the original copy and in keeping with the filming contract specifications.

Original copies in printed paper covers are filmed beginning with the front cover and ending on the last page with a printed or illustrated impression, or the back cover when appropriate. All other original copies are filmed beginning on the first page with a printed or illustrated impression, and ending on the last page with a printed or illustrated impression.

The last recorded frame on each microfiche shall contain the symbol \rightarrow (meaning "CONTINUED"), or the symbol ∇ (meaning "END"), whichever applies.

Maps, plates, charts, etc., may be filmed at different reduction ratios. Those too large to be entirely included in one exposure are filmed beginning in the upper left hand corner, left to right and top to bottom, as many frames as required. The following diagrams illustrate the method:



L'exemplaire filmé fut reproduit grâce à la générosité de:

La bibliothèque des Archives
publiques du Canada

Les images suivantes ont été reproduites avec le plus grand soin, compte tenu de la condition et de la netteté de l'exemplaire filmé, et en conformité avec les conditions du contrat de filmage.

Les exemplaires originaux dont la couverture en papier est imprimée sont filmés en commençant par le premier plat et en terminant soit par la dernière page qui comporte une empreinte d'impression ou d'illustration, soit par le second plat, selon le cas. Tous les autres exemplaires originaux sont filmés en commençant par la première page qui comporte une empreinte d'impression ou d'illustration et en terminant par la dernière page qui comporte une telle empreinte.

Un des symboles suivants apparaîtra sur la dernière image de chaque microfiche, selon le cas: le symbole \rightarrow signifie "A SUIVRE", le symbole ∇ signifie "FIN".

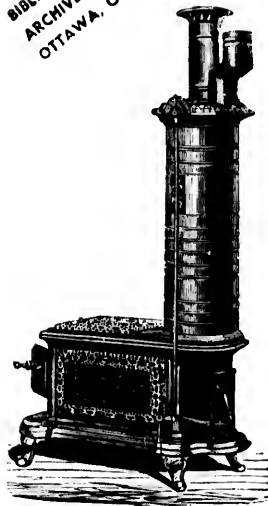
Les cartes, planches, tableaux, etc., peuvent être filmés à des taux de réduction différents. Lorsque le document est trop grand pour être reproduit en un seul cliché, il est filmé à partir de l'angle supérieur gauche, de gauche à droite, et de haut en bas, en prenant le nombre d'images nécessaire. Les diagrammes suivants illustrent la méthode.

ails
du
odifier
une
image

rrata
o

pelure,
à

32X



Important Invention.

TREMENDOUS SAVING IN FUEL!

Over 50 per cent. saved by using

R. EATON'S

Patent Automatic Ventilating Stove

FOR BURNING COAL, WOOD, OR PEAT.



This Patent Stove has been constructed with a special view to remedy the serious defects common to all patterns of heating stoves now in use, and to supply the want which has long been felt by families and Public Institutions—of one means of reducing the outlay for Fuel, the cost of which has been increasing yearly, and has now become a most formidable item.

The principal defects of *all* the old stoves are:—

- 1st.—The utter absence of any provision for carrying off the foul air. It is an alarming fact that a confined atmosphere from continued contact with over-heated metal becomes dessicated and deteriorated to such a degree as to be quite injurious to health, and this impure air is retained in the apartment just at the height to be unavoidably breathed by the occupants, while at the same time the room is robbed of its pure air (which necessarily lies in the lower portion of the apartment) to support combustion.
- 2nd.—The very extravagant consumption of Fuel, and the great waste of heating power.
- 3rd.—The impossibility of securing an equable temperature, for while the upper part of the room is too hot, the lower portion is often too cold, owing principally to the rushing of the cold draughts of air to the register or damper, which is invariably placed at the lower part of the stove.
- 4th.—The constant danger of over-heating the stove and pipes to such an extent as to set the house on fire, and this is frequently the result of leaving the damper open too long on putting in a fresh charge of Fuel, thus placing the safety of life and property at the mercy of careless attendants; and it is scarcely necessary to add that very many disastrous fires may be traced to this fruitful cause.

The advantages of the New Patent Stove are:—

- 1st.—Thorough ventilation of the apartment, secured by means of a "ventilating pipe" at the *top* of the Stove, which carries the heated and impure air *down into the fire*; thus, by this simple contrivance, all injurious gases are taken from the room, and a continual supply of heated air is obtained for combustion; while all cold draughts are avoided, and the apartment is not robbed of its pure air to supply the fire.
- 2nd.—The new Stove saves 50 per cent. (or one half) at least of the fuel ordinarily used, and gives out more heat as compared with the old stoves.
- 3rd.—An equal and agreeable temperature (which can be regulated for the day by means of the "automatic" apparatus) is maintained in the apartment, and the discomfort arising from frequent changes in the temperature is avoided.
- 4th.—The danger of fire from over-heating of the Stove, pipes, etc., is entirely abolished, as the new Stove *regulates itself*, and *shuts its damper* when the required temperature is reached. The danger from children meddling with the damper is also avoided.

The Patent Stove has been thoroughly tested at several Public Institutions, Hotels, and private dwellings; and the invention can be confidently recommended for use in Barracks, Hospitals, Assembly and Lecture Rooms, as well as in Hotels and private dwellings, as it secures both "Salubrity," "Economy" and "Safety," as shewn by the following



TESTIMONIALS.

Messrs. C. F. HILL & Co.

POST OFFICE, MONTREAL, 9th March, 1868.

Gentlemen:—Having at your request placed one of Eaton's "Automatic Ventilating Wood Stoves" in the lobby of this Office, for the purpose of testing its warming capacity for a building of this size, I beg to state that the result has proved the superiority of your Stove in every respect. The mode of test was rigid and exact, a thermometer having been kept at different points in the lobby during the week's trial. The period was from the 2nd to the 7th March, the 2nd being the coldest day of the winter. During the whole of the period the Stove was found quite equal in its warming power to the large 4ft. 6in. Stove ordinarily in use, while the consumption of wood was the difference between 30 sticks per day used in the large Stove and 10 used in yours, or, in other words, a saving of two-thirds in fuel. The outside temperature of the first day being 15° below zero, constituted a very severe test for a new Stove, the regulation of which was not understood by the messenger attached to this Office.

I have therefore much pleasure in communicating this result, and am,

Gentlemen,

Yours obediently,

E. S. FREER, Postmaster.

To C. F. HILL, Esq.

FIRE DEPARTMENT, CHIEF ENGINEER'S OFFICE, MONTREAL, 9th March, 1868.

Sir:—I have had one of Mr. Eaton's two-feet "Automatic Ventilating Wood Stoves" in No. 1 Fire Station, and from its superior construction and power of heating, with the same quantity of wood, the Station was kept at the same temperature for 108 hours as the 4ft. Stove, which is used in the Station, done for 41 hours.

Yours respectfully,

ALEX. BERTRAM,

Chief Engineer, Fire Department, Montreal.

C. F. HILL, Esq.

MONTREAL, March 4th, 1868.

Dear Sir:—Having substituted "Eaton's Automatic" Stove for the one we were using, and having given it a fair trial, we can confidently say our saving of Coal has been upwards of fifty per cent.

I am, yours, &c., &c.,

JOHN ROGERS & CO.,

Chemist and Druggist, 133 Great St. James Street.

C. F. HILL, Esq.

390 NOTRE DAME ST., MONTREAL, March 5th, 1868.

Sir:—Having substituted "Eaton's Automatic" Stove for an "Albanian," the consumption of Coal was on the coldest day this season about Thirty Pounds, which was a saving of fully two-thirds, and giving a greater degree of heat and thoroughly ventilating the room.

FREDERICK DAKUS.

C. F. HILL, Esq.

CITY SALOON, 5 PLACE D'ARMES HILL, MONTREAL, March 4th, 1868.

Sir:—I have been using "Eaton's Automatic" Stove for the past few months in my Bar, and I now certify that it has saved me in Coal at least two-thirds of the quantity consumed by an "Albanian," giving at the same time by the Regulator a more general and comfortable heat through the rooms, besides carrying off smoke and foul air, and thoroughly ventilating the place.

I am, yours, &c., &c.,

JOHN WALTERS.

C. F. HILL, Esq.

MONTREAL, March 4th, 1868.

We, the undersigned, having for some time past been using "Eaton's Automatic" Stove for burning wood, find it far superior to the common "Box" Stove, also far more economical as regards fuel, it only consuming about half of the amount used in the other Stove, at the same time throwing off a greater amount of heat; and by setting it according to the Regulator at a given temperature, we find it to remain so all day, and that by its construction it causes a thorough ventilation,—therefore we have much pleasure in granting the present certificate.

WRIGHT & BROGAN,

Notaries Public, Commissioners, &c., &c., 58 St. François Xavier Street.

C. F. HILL & CO.,

Agents for EATON'S Automatic Ventilating Stove,

58 FRANCOIS XAVIER STREET,

MONTREAL.

C-122281

