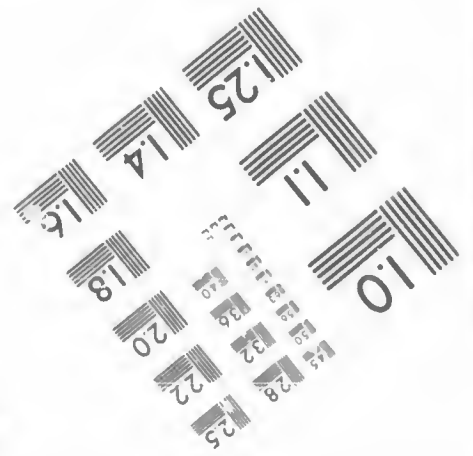
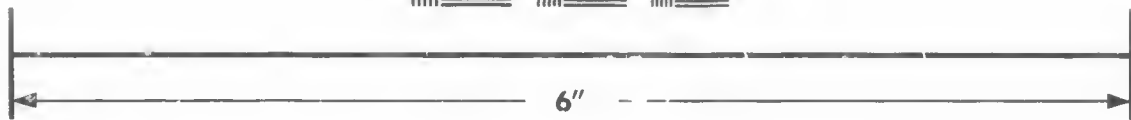
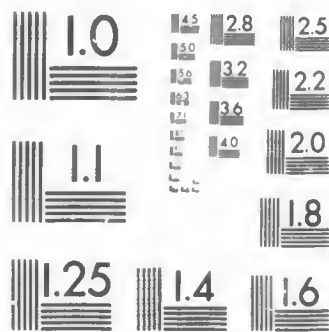


**IMAGE EVALUATION
TEST TARGET (MT-3)**



**Photographic
Sciences
Corporation**

23 WEST MAIN STREET
WEBSTER, N.Y. 14580
(716) 872-4503

**CIHM/ICMH
Microfiche
Series.**

**CIHM/ICMH
Collection de
microfiches.**



Canadian Institute for Historical Microreproductions / Institut canadien de microreproductions historiques

© 1987

Technical and Bibliographic Notes/Notes techniques et bibliographiques

The Institute has attempted to obtain the best original copy available for filming. Features of this copy which may be bibliographically unique, which may alter any of the images in the reproduction, or which may significantly change the usual method of filming, are checked below.

L'Institut a microfilmé le meilleur exemplaire qu'il lui a été possible de se procurer. Les détails de cet exemplaire qui sont peut-être uniques du point de vue bibliographique, qui peuvent modifier une image reproduite, ou qui peuvent exiger une modification dans la méthode normale de filmage sont indiqués ci-dessous.

- Coloured covers/
Couverture de couleur
- Covers damaged/
Couverture endommagée
- Covers restored and/or laminated/
Couverture restaurée et/ou pelliculée
- Cover title missing/
Le titre de couverture manque
- Coloured maps/
Cartes géographiques en couleur
- Coloured ink (i.e. other than blue or black)/
Encre de couleur (i.e. autre que bleue ou noire)
- Coloured plates and/or illustrations/
Planches et/ou illustrations en couleur
- Bound with other material/
Relié avec d'autres documents
- Tight binding may cause shadows or distortion along interior margin/
La reliure serrée peut causer de l'ombre ou de la distorsion le long de la marge intérieure
- Blank leaves added during restoration may appear within the text. Whenever possible, these have been omitted from filming/
Il se peut que certaines pages blanches ajoutées lors d'une restauration apparaissent dans le texte, mais, lorsque cela était possible, ces pages n'ont pas été filmées.
- Additional comments:/
Commentaires supplémentaires.

- Coloured pages/
Pages de couleur
- Pages damaged/
Pages endommagées
- Pages restored and/or laminated/
Pages restaurées et/ou pelliculées
- Pages discoloured, stained or foxed/
Pages décolorées, tachetées ou piquées
- Pages detached/
Pages détachées
- Showthrough/
Transparence
- Quality of print varies/
Qualité inégale de l'impression
- Includes supplementary material/
Comprend du matériel supplémentaire
- Only edition available/
Seule édition disponible
- Pages wholly or partially obscured by errata slips, tissues, etc., have been refilmed to ensure the best possible image/
Les pages totalement ou partiellement obscurcies par un feuillet d'errata, une pelure, etc., ont été filmées à nouveau de façon à obtenir la meilleure image possible.

This item is filmed at the reduction ratio checked below/
Ce document est filmé au taux de réduction indiqué ci-dessous.

10X	14X	18X	22X	26X	30X
<input type="checkbox"/>	<input type="checkbox"/>	<input type="checkbox"/>	<input checked="" type="checkbox"/>	<input type="checkbox"/>	<input type="checkbox"/>
12X	16X	20X	24X	28X	32X

The copy filmed here has been reproduced thanks to the generosity of:

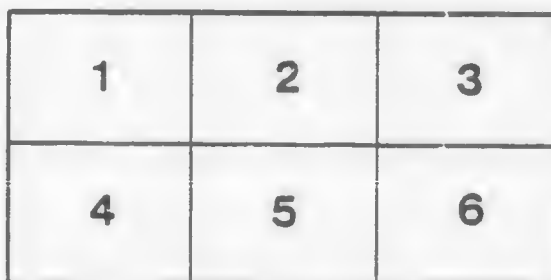
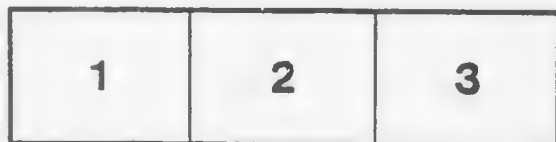
Harold Campbell Vaughan Memorial Library
Acadia University.

The images appearing here are the best quality possible considering the condition and legibility of the original copy and in keeping with the filming contract specifications.

Original copies in printed paper covers are filmed beginning with the front cover and ending on the last page with a printed or illustrated impression, or the back cover when appropriate. All other original copies are filmed beginning on the first page with a printed or illustrated impression, and ending on the last page with a printed or illustrated impression.

The last recorded frame on each microfiche serial contain the symbol \rightarrow (meaning "CONTINUED"), or the symbol ∇ (meaning "END"), whichever applies.

Maps, plates, charts, etc., may be filmed at different reduction ratios. Those too large to be entirely included in one exposure are filmed beginning in the upper left hand corner, left to right and top to bottom, as many frames as required. The following diagrams illustrate the method:



L'exemplaire filmé fut reproduit grâce à la générosité de:

Harold Campbell Vaughan Memorial Library
Acadia University.

Les images suivantes ont été reproduites avec le plus grand soin, compte tenu de la condition et de la netteté de l'exemplaire filmé, et en conformité avec les conditions du contrat de filmage.

Les exemplaires originaux dont la couverture en papier est imprimée sont filmés en commençant par le premier plat et en terminant soit par la dernière page qui comporte une empreinte d'impression ou d'illustration, soit par le second plat, selon le cas. Tous les autres exemplaires originaux sont filmés en commençant par la première page qui comporte une empreinte d'impression ou d'illustration et en terminant par la dernière page qui comporte une telle empreinte.

Un des symboles suivants apparaîtra sur la dernière image de chaque microfiche, selon le cas: le symbole \rightarrow signifie "A SUIVRE", le symbole ∇ signifie "FIN".

Les cartes, planches, tableaux, etc., peuvent être filmés à des taux de réduction différents. Lorsque le document est trop grand pour être reproduit en un seul cliché, il est filmé à partir de l'angle supérieur gauche, de gauche à droite, et de haut en bas, en prenant le nombre d'images nécessaire. Les diagrammes suivants illustrent la méthode.

GUIDE TO VICTORIA, BRITISH COLUMBIA.

"All Roads Lead to Rome."—They Also Lead to—

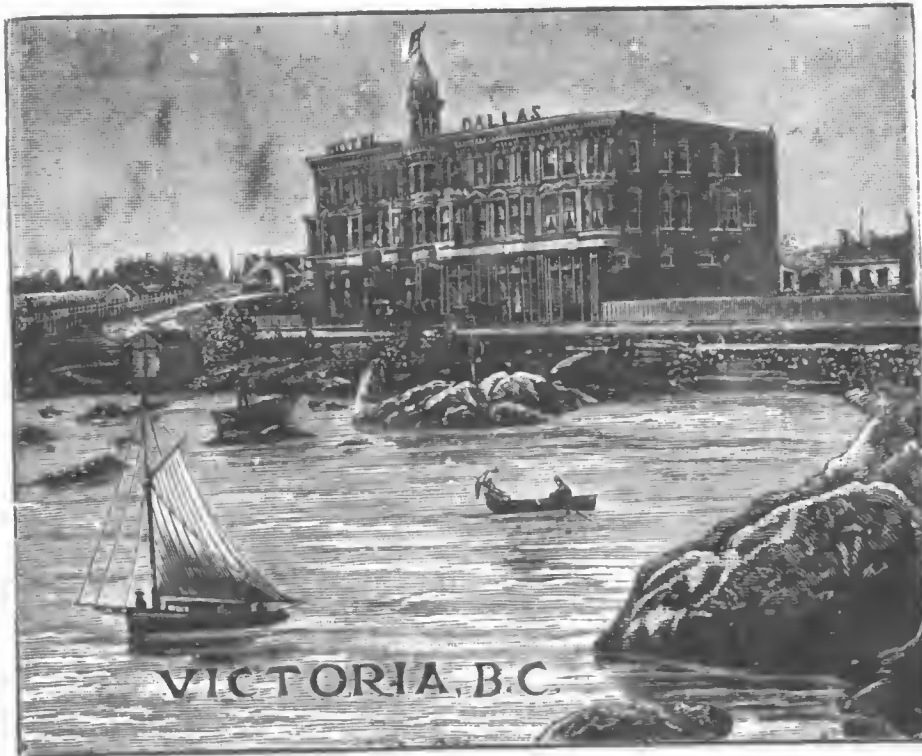
A
917.11
H79.

—THE—

HOTEL



DALLAS



VICTORIA, B.C.

THE HOME FOR TOURISTS.

WM. JENSEN,

PROPRIETOR.

VICTORIA, B.C.

Rates, from \$2.50 to \$5.00 per day.

PROVINCE PRINT

A
917.11
H79

"ALL ROADS LEAD TO ROME."

. . . They Also Lead to . . .



THE DALLAS HOTEL



THE MOST RECHERCHE HOTEL IN THE CITY.



• VICTORIA, B.C. •



SITUATED within an easy distance of the commercial centre and commanding a splendid view of the Straits of San Juan de Fuca, and within five minutes to the wharf landings of the China, Australian and San Francisco Steamers, etc. It has all the more modern improvements, including the electric light throughout, and is conducted on the American plan by Mr. Wm. Jensen, whose reputation as a successful caterer is universally known. The various suites of rooms are elegantly furnished, and, in a few words, it is the most complete, luxurious and liberally managed hotel in the Province. A paradise in summer and a most perfect home in winter for families and travellers.

✻ VICTORIA ✻

BRIEFLY DESCRIBED.

VICTORIA, the most pleasant and delightful city on the Pacific Coast, is the capital and seat of Government of British Columbia, situated on the extreme south-eastern extremity of Vancouver Island, in lat. 48° 25' 20" north and long. 123° 22' 24" west.

Early in the present century, the Hudson's Bay Company established a trading post at Victoria; in 1847, they built a fort; and, in 1852, the town was surveyed and plotted by the late Mr. Pemberton and his assistants; and, in 1862, was incorporated as a city. At the present time, the City Council comprises a mayor and nine aldermen, elected annually in January. Since incorporation, the city limits have been several times extended, until they now embrace an area of about 8½ square miles.

Victoria is a city manifold in its advantages and delightful to the heart of the tourist. Driving over any of the excellent and well preserved and macadamized roads the eye is enchanted with the picturesqueness of the landscape and the handsome residences, with their well-kept gardens, are evidence of the prosperity of the inhabitants and the richness of the soil. The scenery is grand; Mount Baker with its ever snow-clad top being conspicuous in the distance, and the drives in and around Victoria are numerous and enchanting. The climate is delightful; in summer, always cool and pleasant,

especially in the evenings ; in the winter, the thermometer rarely falls below 16° above zero ; the average rainfall being about thirty-four inches.

The increase of the population has been steady. In 1874, it numbered 4,674; in 1884, 12,000; and, at the last census, in 1891, taken by the city, the return was 22,981.

To the sportsman, Victoria is a delightful headquarters; for within easy distance of the city can be found in plenty quail, snipe, wild duck, grouse (blue and willow) and pheasants, and also deer. The angler can, in the numerous lakes and mountain streams, find trout; and, in the various bays of the sea, salmon at all seasons. Visitors cannot do better than trust themselves to the guidance of the genial proprietor of the DALLAS HOTEL, who is himself a keen sportsman.

Victoria possesses a well-appointed theatre, capable of seating 1,200 persons; and, during the winter season, performances by the best companies are continuously represented.

The industries of Victoria are numerous and varied, including large iron and boiler works, machine shops, saw mills, flour and rice mills, chemical works, ship-building, etc.; in fact, every industry is well represented by many flourishing firms of old standing and respectability.

The various churches are well represented ; amongst the principal being Christ Church Cathedral in Burdette Avenue, (Anglican); St. Andrew's Cathedral (R.C.), in Blanchard street ; the Methodist, in Pandora street ; the Presbyterian, in Douglas street ; with several others of all denominations scattered over the city, all in close proximity by car line to the DALLAS HOTEL.

Victoria has a splendid ten minutes' service of electric street railways, conducted by a private company, having about 14½ miles of rails, branching out in various directions from the business centre, having a terminus within two minutes' walk of the DALLAS HOTEL.

OAK BAY.

A most popular resort for picnics and excursions. A splendid view of Mount Baker can be seen from the bay. Electric tram-cars run from the DALLAS HOTEL.

THE PROVINCIAL MUSEUM.

Situated in the Government grounds in James' Bay, a few minutes by tram from the DALLAS HOTEL, is open to the public free from 9 a.m. to 5 p.m. Organized in 1887, with a few specimens of British Columbia products in mineral and natural history, it has developed under the able supervision of Mr. John Fannin, the curator, to its present extensive and interesting collection of minerals, fossils, Indian curios, specimens of natural history, etc., etc., which all visitors should not fail to see.

GOLDSTREAM.

A very picturesque resort about 11 miles from Victoria, so named from an excitement some years since of gold being found in its stream, is reached by the E. & N. railway; but a drive from the DALLAS HOTEL, through Esquimalt, the various hamlets and Langford plains (the picnic paradise of Victorians), would repay the tourist. Hunting and fishing, combined with its most lovely scenery, are its chief attractions.

COWICHAN LAKE.

Reached from Victoria by the E. & N. railway, is famous for its lake, which is twenty miles long and two miles wide, and abounds in fish, principally speckled trout. This lake is noted throughout the Province for its excellent fly fishing—fifty or sixty pounds being no uncommon catch in a single day.

The beautiful resorts around Victoria frequented by the sportsman, cyclist and by tourists and Victorians in riding and driving are so numerous that to give them in detail would require more space than is at command; suffice it to say that from the DALLAS HOTEL, the visitor can, within a very few minutes, satisfy his requirements, be they boating, fishing, hunting, driving or walking.

✧ RESORTS ✧



In and around Victoria.



BEACON HILL.

Lying to the south of the city, and overlooking the Straits of San Juan, and within five minutes' from the DALLAL HOTEL. It commands from its high points perhaps the finest landscape views of mountains, water and islands that are to be seen in any part of the world. From the DALLAS HOTEL, an uninterrupted drive along the shores of the Straits and through the park can be enjoyed that is unequalled anywhere. Nature has done much and, being embellished by the art of man, has made Beacon Hill the pride of Victoria. It is a grand athletic ground, and various games—such as cricket, baseball, lacrosse, etc.—are always being played.

THE GORGE.

A north arm of the harbour is reached by a lovely drive from the DALLAS HOTEL; but the most favoured route is by boat. The scenery around the Gorge is very beautiful.

ESQUIMALT.

One of the most prominent resorts in the vicinity of Victoria lying to the west of the city, has a most splendid harbour, where Her Majesty's men-of-war are always stationed; it being the naval station for the Pacific squadron, every facility is given the public to inspect them at all times. The graving dock, lately built at the expenditure of one million dollars, is 400 feet in length, 26 feet deep, and has an entrance of 90 feet. The electric railway tram-cars run from the DALLAS HOTEL. The drive from the DALLAS HOTEL through the city and over the north arm of the harbour is very beautiful.

→ The Public Buildings →

IN VICTORIA ARE HANDSOME STRUCTURES.

THE LAW COURTS,

Situated in the centre of the city in Bastion Square.

THE NEW GOVERNMENT BUILDINGS,

Fronting on James Bay; now being erected at a cost of about \$1,000,000.

THE CUSTOM HOUSE,

On Wharf Street.

THE POST OFFICE,

On Government Street.

THE PROVINCIAL MUSEUM,

James Bay.

THE CITY HALL,

With its Public Library and free reading rooms, on Douglas Street.

THE PUBLIC SCHOOLS,

On Fort Street, with the various ward schools—two of which have lately been erected at a cost of \$40,000.

THE BOARD OF TRADE BUILDING,

On Bastion Square.

THE UNION CLUB,

On Douglas Street.

THE ROYAL JUBILEE HOSPITAL,

Costing \$100,000, on Cadboro Bay Road.

THE AGRICULTURAL HALL,

On Cadboro Bay Road.

These are among the handsome edifices already built on a scale adapted not only for the present use, but for the future increased requirements.

STEAMBOAT SERVICE.

- FOR SAN FRANCISCO (750 miles)—Steamers arrive and depart every five days from the wharf opposite the DALLAS HOTEL.
- FOR CHINA AND JAPAN—Canadian Pacific steamers Empress of Japan, India and China arrive and depart from the wharf opposite DALLAS HOTEL, fortnightly.
- The Northern Pacific steamers Tacoma, Sikh and Victoria arrive and depart monthly from the wharf opposite the DALLAS HOTEL.
- FOR AUSTRALIA AND HONOLULU—The C.P.R. steamers Arawa and Warrimoo arrive and depart monthly from the wharf opposite the DALLAS HOTEL.
- FOR VANCOUVER—The C.P.N. Co's steamer Charmer leaves daily, except Monday, at 2 a.m., connecting with the Atlantic Express leaving Vancouver at 2 p.m.
- FOR NEW WESTMINSTER AND FRASER RIVER—C.P.N. steamers leave Sunday at 11 p.m., Wednesday and Friday at 7 a.m.
- FOR ALASKA—Steamers leave the Outer Wharf, opposite DALLAS HOTEL, fortnightly.
- FOR NANAIMO AND COMOX—Steamer Joan leaves every Tuesday at 7 a.m.; returning, arrives every Saturday about 3 p.m.
- FOR PUGET SOUND—The steamers City of Kingston and Rosalie arrive and depart daily, calling at Port Townsend (38 miles), Seattle (82 miles) and Tacoma (110 miles).
- FOR NORTHERN COAST POINTS—C.P.N. Co's steamers Danube and Barbara Boscowitz leave on the 1st and 15th of every month, for Port Simpson and Intermediate ports. When sufficient inducements are offered, trips will be extended to Queen Charlotte Islands.
- FOR ALBERNI AND BARCLAY SOUND PORTS—C.P.N. Co's steamer Maude leaves the 1st and 15th of each month.

TRAIN SERVICE.

- FOR NANAIMO AND DEPARTURE BAY—The E. & N. train leaves daily at 8 a.m.; an additional train leaves Friday, Saturday and Sunday, at 4:50 p.m., returning same day.
- TO SYDNEY (Saanich)—Leave Victoria at 7 a.m. and 4 p.m. on week days, and 8:15 a.m. and 2 p.m. on Sundays.

STAGE ROUTES.

- FOR MOUNT TOLMIE—Stage leaves Fort Street 11 a.m. daily, ex. Sunday.
- FOR SAANICH—Leaves Post Office each Tuesday and Friday at 2 p.m.
- FOR METCHOSIN—Every Friday at 8 a.m.
- FOR SOOKE—Every Friday at 7 a.m.

ELECTRIC TRAM CARS.

Leave the DALLAS HOTEL every twenty minutes, for Saanich road, Fernwood road, Victoria West, Esquimalt, Oak Bay, Cadboro Bay, Royal Jubilee Hospital and Agricultural Grounds.

Trains in Connection with Victoria Steamers.

- C.P.R.—The Atlantic Express leaves Vancouver daily at 14 o'clock. The Pacific Express arrives daily at 13 o'clock.
- FOR SEATTLE, per C.P.R., via Mission—Train leaves Vancouver daily at 9 a.m.
- FOR SEATTLE, per Great Northern—Train leaves New Westminster daily at 9:30 a.m.
- FOR NEW WESTMINSTER, per C.P.R.—Train leaves Vancouver daily at 9 and 14:00 o'clock.
- FOR ST. PAUL AND EASTERN POINTS, per Northern Pacific—Train leaves Seattle daily at 10:20 p.m.
- FOR PORTLAND, SAN FRANCISCO AND ALL POINTS SOUTH—Trains leave Seattle at 9 a.m.
- FOR SPOKANE, ST. PAUL AND ALL EASTERN POINTS—Trains leave Seattle daily at 11 p.m.



The Province is a high class literary weekly paper published on Saturdays. Send post Card for Sample Copy to the Managing Editor

P. O. Drawer 64

VICTORIA, B.C.

RELIABLE BUSINESS HOUSES.

ESTABLISHED 1862.

WEILER BROS.



SOLE AGENTS FOR
CROSSLEY & SONS'
CARPETS, NAIRNS,
LINOLEUMS,
LIBERTY ART FABRICS
AMERICAN RATTAN CO'S.
REED AND
RATTAN FURNITURE.

THE LARGEST STOCK OF

Furniture,	Carpets,	Rugs,
Art Squares,	Linoleums,	Oilcloths,
Wallpapers,	Curtains,	Draperies,
Crockery,	Glassware,	Fine Art China,
	Silverware.	

COMPLETE HOUSE FURNISHINGS

The Largest and Most Interesting Store in the Province.

SHOWROOMS, 51 to 55 FORT ST.
FACTORY, HUMBOLDT STREET.

VICTORIA, B.C.

RELIABLE BUSINESS HOUSES.

Victoria Transfer Company, Ltd.

THE ONLY INCORPORATED TRANSFER COMPANY IN THE CITY.

21 & 22 BROUGHTON ST., Foot of Broad.

TELEPHONE 129.

This Company have the finest stock of Horses, Carriages, Buggies and Phaetons in the Province.

Two, four and six horse omnibuses furnished for parties on short notice.



TOURISTS TO VICTORIA will find it to their advantage to have their Baggage Checked by this Company, as good, reliable men only are employed, and prompt delivery to hotels guaranteed.

See that you get the VICTORIA TRANSFER CO'S. carriages. The name of the Company is on all our public conveyances.

Baggage Checked and Transferred to all Parts or Stored. Furniture and Freight Moved, Etc., Etc.

FLEMING BROS. - - -

Portrait and Landscape Photographers

VISITORS TO VICTORIA CAN OBTAIN

VIEWS, PORTRAITS, KODAKS, FILM AND PLATES

At 50 Government St. Next to Bank of B.C. Victoria, B.C.

D. CAMPBELL & CO.

VICTORIA'S LEADING TAILORS

Importers of Finest English Goods. A Fit Guaranteed.

TOURISTS AND THE GENERAL PUBLIC will do well if they leave their orders with Campbell & Co., if they want Suits or Trousers made at a short notice during their stay in the city.

CORNER
Trounce Ave. and Broad Street.

OPP. DRIARD HOTEL

VICTORIA, B.C.

RELIABLE BUSINESS HOUSES.

Tourists and Visitors to Victoria
should visit the

BROWN JUG SALOON

Fort and Government Sts.

First-Class Drinks and Cigars.

M. POWERS, - Proprietor.

Tourists and Visitors to Victoria
should see that they

DRINK ONLY

**THE EXCELSIOR
ALE AND LAGER BEER**

Brewed from Malt and Hops only.

STEVE O'BRIEN,
Proprietor.

**The Golden Rule
Clothing Store**

Tourists and Travellers
you should call and see
us, if you require any-
thing in our line. No
trouble to show goods.

77 GOVERNMENT STREET

Opp. Bank of Montreal.

W. J. Jeffree, - - Proprietor.

Gentlemen's
Furnishings,
Underwear,
Suits, Etc.

The Largest
and best
assorted
stock
in the city.

The Gorge



ALL Visitor to Victoria should not
fail to pay a visit to

Victoria's Famous Pleasure Grounds

*Picturesquely situated on the Arm.
Easy approach for boating parties
Best picnic grounds in the vicinity
of Victoria.*

GORGE HOTEL

MRS. MARSHALL,

Proprietress.

RELIABLE BUSINESS HOUSES.

A. W. MORE & CO.

Real Estate, Insurance and Financial Agents, Etc.

70 DOUGLAS STREET, VICTORIA, B.C.

Investments made for non-residents.

Correspondence Solicited.

While in the city, should you want anything in the Musical
Line, Call at _____

WAITT'S MUSIC STORE

64 GOVERNMENT ST., VICTORIA, B.C.

LATEST SHEET MUSIC, BOOKS, AND ALL KINDS OF MUSICAL INSTRUMENTS.

J. BARNSLEY & CO.

IMPORTER OF

GENERAL SPORTING GOODS

Guns, Rifles,

Ammunition,

Fishing Tackle.

119 GOVERNMENT STREET.

C. H. BOWES

Prescription - Druggist.

100 GOVERNMENT STREET.

Near the corner of Yates.

TELEPHONE ORDERS
PROMPTLY ATTENDED TO.

Victoria - Baths AND Hair Dressing Saloon

Wm. Whittaker. Prop.

128 GOVERNMENT ST.

Near Johnson.

Special attention given to Ladies and
Children's Hair Cutting.

J. Fullerton

TOURISTS' SHOES

A SPECIALTY . . .

103 Government St.

RELIABLE BUSINESS HOUSES.

CAPT. CHAS. CATES.

ALEX. McDERMOTT.

Gates & McDermott,

LICENSED GENERAL STEVEDORES



Doing Business at all British Columbia Ports.

BALLAST FURNISHED.

Ships Letters Addressed to our care Delivered Promptly and Free of Charge.

P. O. BOX 350. VICTORIA, B.C.

LAKESIDE HOTEL

COWICHAN LAKE

— VANCOUVER ISLAND —

Price and Jaynes, Proprietors.

THE CENTRE OF HUNTING AND FLY FISHING.

Sportsmen and Tourists should not fail to pay this most charming spot a visit.

Canadian Pacific Navigation Co.,

LIMITED

PRINCIPAL OFFICE, - - VICTORIA, B.C.

Steamers of this Line, carrying passengers, freight and Her Majesty's mails, leave Victoria regularly for Vancouver, New Westminster, and points on Fraser River, connecting with trains of the Canadian Pacific Railway, Nanaimo, and Ports on the East Coast, and

ALL POINTS ON THE NORTHERN AND WESTERN COASTS OF BRITISH COLUMBIA

JOHN IRVING, - . Manager.

