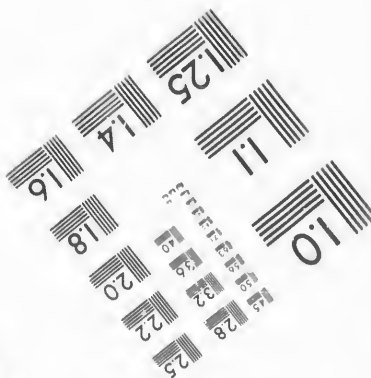
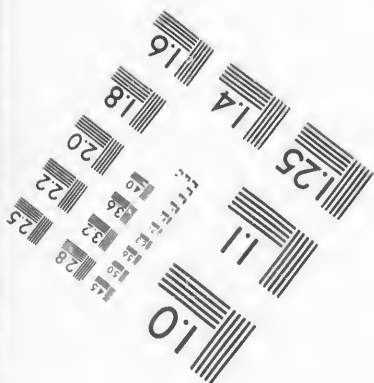
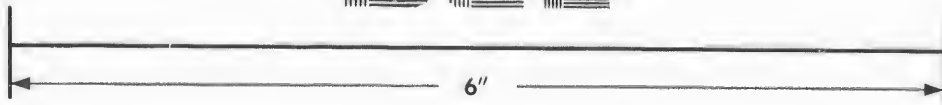
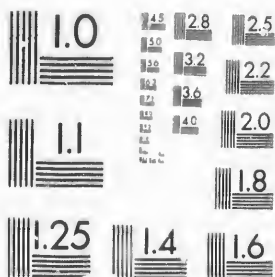


**IMAGE EVALUATION
TEST TARGET (MT-3)**



**Photographic
Sciences
Corporation**

23 WEST MAIN STREET
WEBSTER, N.Y. 14580
(716) 872-4503

1.5 2.8
1.8 2.5
2.2 2.2
2.0 2.0
1.8

**CIHM/ICMH
Microfiche
Series.**

**CIHM/ICMH
Collection de
microfiches.**



Canadian Institute for Historical Microreproductions / Institut canadien de microreproductions historiques

10

© 1987

Technical and Bibliographic Notes/Notes techniques et bibliographiques

The Institute has attempted to obtain the best original copy available for filming. Features of this copy which may be bibliographically unique, which may alter any of the images in the reproduction, or which may significantly change the usual method of filming, are checked below.

L'Institut a microfilmé le meilleur exemplaire qu'il lui a été possible de se procurer. Les détails de cet exemplaire qui sont peut-être uniques du point de vue bibliographique, qui peuvent modifier une image reproduite, ou qui peuvent exiger une modification dans la méthode normale de filmage sont indiqués ci-dessous.

- | | |
|--|--|
| <input type="checkbox"/> Coloured covers/
Couverture de couleur | <input type="checkbox"/> Coloured pages/
Pages de couleur |
| <input type="checkbox"/> Covers damaged/
Couverture endommagée | <input checked="" type="checkbox"/> Pages damaged/
Pages endommagées |
| <input type="checkbox"/> Covers restored and/or laminated/
Couverture restaurée et/ou pelliculée | <input type="checkbox"/> Pages restored and/or laminated/
Pages restaurées et/ou pelliculées |
| <input type="checkbox"/> Cover title missing/
Le titre de couverture manque | <input checked="" type="checkbox"/> Pages discoloured, stained or foxed/
Pages décolorées, tachetées ou piquées |
| <input type="checkbox"/> Coloured maps/
Cartes géographiques en couleur | <input type="checkbox"/> Pages detached/
Pages détachées |
| <input type="checkbox"/> Coloured ink (i.e. other than blue or black)/
Encre de couleur (i.e. autre que bleue ou noire) | <input checked="" type="checkbox"/> Showthrough/
Transparence |
| <input type="checkbox"/> Coloured plates and/or illustrations/
Planches et/ou illustrations en couleur | <input type="checkbox"/> Quality of print varies/
Qualité inégale de l'impression |
| <input type="checkbox"/> Bound with other material/
Relié avec d'autres documents | <input type="checkbox"/> Includes supplementary material/
Comprend du matériel supplémentaire |
| <input type="checkbox"/> Tight binding may cause shadows or distortion
along interior margin/
La reliure serrée peut causer de l'ombre ou de la
distorsion le long de la marge intérieure | <input type="checkbox"/> Only edition available/
Seule édition disponible |
| <input type="checkbox"/> Blank leaves added during restoration may
appear within the text. Whenever possible, these
have been omitted from filming/
Il se peut que certaines pages blanches ajoutées
lors d'une restauration apparaissent dans le texte,
mais, lorsque cela était possible, ces pages n'ont
pas été filmées. | <input type="checkbox"/> Pages wholly or partially obscured by errata
slips, tissues, etc., have been refilmed to
ensure the best possible image/
Les pages totalement ou partiellement
obscurcies par un feuillet d'errata, une pelure,
etc., ont été filmées à nouveau de façon à
obtenir la meilleure image possible. |
- Additional comments: [Printed ephemera] 1 sheet (verso blank)
Commentaires supplémentaires:

This item is filmed at the reduction ratio checked below/
Ce document est filmé au taux de réduction indiqué ci-dessous.

10X	14X	18X	22X	26X	30X
<input type="checkbox"/>	<input type="checkbox"/>	<input type="checkbox"/>	<input type="checkbox"/>	<input checked="" type="checkbox"/>	<input type="checkbox"/>
12X	16X	20X	24X	28X	32X

The copy filmed here has been reproduced thanks to the generosity of:

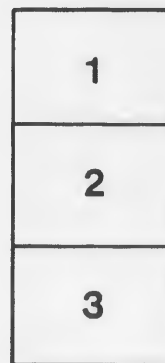
D. B. Weldon Library
University of Western Ontario
(Regional History Room)

The images appearing here are the best quality possible considering the condition and legibility of the original copy and in keeping with the filming contract specifications.

Original copies in printed paper covers are filmed beginning with the front cover and ending on the last page with a printed or illustrated impression, or the back cover when appropriate. All other original copies are filmed beginning on the first page with a printed or illustrated impression, and ending on the last page with a printed or illustrated impression.

The last recorded frame on each microfiche shall contain the symbol \rightarrow (meaning "CONTINUED"), or the symbol ∇ (meaning "END"), whichever applies.

Maps, plates, charts, etc., may be filmed at different reduction ratios. Those too large to be entirely included in one exposure are filmed beginning in the upper left hand corner, left to right and top to bottom, as many frames as required. The following diagrams illustrate the method:



L'exemplaire filmé fut reproduit grâce à la générosité de:

D. B. Weldon Library
University of Western Ontario
(Regional History Room)

Les images suivantes ont été reproduites avec le plus grand soin, compte tenu de la condition et de la netteté de l'exemplaire filmé, et en conformité avec les conditions du contrat de filmage.

Les exemplaires originaux dont la couverture en papier est imprimée sont filmés en commençant par le premier plat et en terminant soit par la dernière page qui comporte une empreinte d'impression ou d'illustration, soit par le second plat, selon le cas. Tous les autres exemplaires originaux sont filmés en commençant par la première page qui comporte une empreinte d'impression ou d'illustration et en terminant par la dernière page qui comporte une telle empreinte.

Un des symboles suivants apparaîtra sur la dernière image de chaque microfiche, selon le cas: le symbole \rightarrow signifie "A SUIVRE", le symbole ∇ signifie "FIN".

Les cartes, planches, tableaux, etc., peuvent être filmés à des taux de réduction différents. Lorsque le document est trop grand pour être reproduit en un seul cliché, il est filmé à partir de l'angle supérieur gauche, de gauche à droite, et de haut en bas, en prenant le nombre d'images nécessaire. Les diagrammes suivants illustrent la méthode.

PROCLAM

Electoral District

SOUTH R

OF THE

COUNTY OF

INDIANA

Public Notice is hereby given to the Electors of the Electoral District aforesaid, that on the Seventeenth day of August, 1873. I require the pro

VILLAGE OF

In the Township of Hamilton, the C

AMMATION

District of the

RIDING

THE

OF HURON,

W E T :

erict aforesaid, that in obelience to Her Majesty's Writ to me directed and bearing date
3. I require the presence of the said Electors at the

OF HENSALL,

VILLAGE OF

In the Township of Hay in the County of

Tenth day of the month

From noon until two of the clock, for the purpose of nominating a person to represent them in the poll demanded and allowed in the manner by law prescribed, such poll will be opened on the seventh day of the month at the hour of nine in the morning until five of the clock in the afternoon in the

FOR THE TOWNSHIP OF GODERICH.

- Polling District No. 1**—Comprising and containing all that part of the Township of Goderich commencing at the lake shore, at the line between the Goderich town boundary and the Township, thence south along the several windings of said lake shore to the line between Lots Twenty-five and Twenty-six, thence east along said line to the line between the 4th and 5th Concessions, thence north along said line until it touches the line between Lot Eight in Maitland Concession and Concession B, thence along said line to the River Maitland, thence north west along said river to the boundary of the Town of Goderich, thence along said line to the Huron Road, thence from said road along the boundary line between the Town and Township of Goderich, to the place of beginning, at Murdo Gordon's House, Lot 16, Con. 3.
- Polling District No. 2**—Comprising and containing all that part of the Township of Goderich commencing at the River Maitland at the line between Lot Eight in the Maitland Concession and Concession B; thence along said line to the line between the Fourth and Fifth Concessions, thence south along said line to the line between Lots Twenty-five and Twenty-six, thence east along said line to the line between the Eighth and Ninth Concessions, thence north along said line to the line Lots Twenty and Twenty-one, thence east to the River Maitland, thence along the several windings of said River to the place of beginning at James Duncan's house Lot 17, Con. 7.
- Polling District No. 3**—Comprising and containing all that part of the Township of Goderich commencing at the Lake shore along the line between Lot Twenty-five and Twenty-six, thence along said Lake shore to the River Bayfield, thence along said river to the line between the Eighth and Ninth Concessions, thence north along said line to the line between Lots Twenty-five and Twenty-six, thence west to the place of beginning at Robert Russell's house, Lot 36, Con. 5.
- Polling District No. 4**—Commencing at the line between lots 25 and 26 (cut line) thence south along the line between the Eighth and Ninth Concession to the River Bayfield thence along the said River to the line between Goderich Township and the Township of Tucker Smith, thence along said line to the Huron Road along the Boundary of the Town of Clinton, thence along the west side of the Huron Road to the Centre Road at the Village of Holmesville, thence along the south side of the Cut Line to the line between the Eighth and Ninth Concessions being the place of beginning at W. Wise's House, Lot 41, Con. 11.
- Polling District No. 5**—Commencing at the River Maitland at the line between Lots Thirty-one and Thirty-two in the Maitland Concession, thence west along said line to the line between the Eighth and Ninth concessions thence south along said line to the Centre Road (known as the cut line) thence along the north side of said cut line to the Village of Holmesville thence along the east side of the Huron Road to the Town of Clinton thence along the Boundary of the Township to the North branch of the Maitland River thence along said River to the place of beginning at H. Efferds house Holmesville.

FOR THE VILLAGE OF EXETER.

- Polling District No. 1**—Comprising from Sanders and North Streets to the South Boundary of the Village, Southcot's Store, Main St.
- Polling District No. 2**—Comprising from Sanders and North Streets to the North Boundary of the Village, E. Drew's Hall.

FOR THE TOWNSHIP OF STANLEY.

- Polling District No. 1**—Comprising Concessions 1, 2, 3, 4 and 5 north of the Bayfield Road, together with parts of 4 and 5 north of the Bayfield Road, together with parts of 24 and 25, in the Bayfield Road North and Bayfield Road South concessions, and Lots 2 to 5, inclusive, in the Bayfield Road South Boundary at Yuill's School House Sec. 10.
- Polling District No. 2**—Comprising the Lots in Concession 6 South of the Bayfield Road, and in Concessions 7, 8, 9, 10, 11, 12, 13, 14, 15, 16, 17, 18, 19, 20, 21, 22, 23, 24, 25, 26, 27, 28, 29, 30, 31, 32, 33, 34, 35, 36, 37, 38, 39, 40, 41, 42, 43, 44, 45, 46, 47, 48, 49, 50, 51, 52, 53, 54, 55, 56, 57, 58, 59, 60, 61, 62, 63, 64, 65, 66, 67, 68, 69, 70, 71, 72, 73, 74, 75, 76, 77, 78, 79, 80, 81, 82, 83, 84, 85, 86, 87, 88, 89, 90, 91, 92, 93, 94, 95, 96, 97, 98, 99, 100, together with Lots 1 to 23, inclusive, in the Bayfield Road South, and Lots 24 to 30, inclusive, in the South Boundary at Town Hall, Varnum's School House, Sec. 10.
- Polling District No. 3**—Comprising the Lots in Concession 11, together with the Lots 15 to 21, inclusive, in the Bayfield Road South Boundary, at School House, Goshen Line Sec. 5.
- Polling District No. 4**—Comprising the Lots in Concession 12, 13, 14, 15, 16, 17, 18, 19, 20, 21, 22, 23, 24, 25, 26, 27, 28, 29, 30, inclusive, in the South Boundary at Drigat's School House, sec. 4.

FOR THE TOWNSHIP OF HAY.

- Polling District No. 1**—Comprising the First, Second, Third, Fourth, Fifth, Sixth, and Seventh Concessions, from the South Boundary to and including Lots Twenty, and South Boundary Lots Four to Thirteen inclusive at School House No. 2.
- Polling District No. 2**—Comprising the First Second, Third, Fourth, Fifth, Sixth and Seventh Concessions, including Lot one to North Boundary, and Lots Two to Thirteen inclusive, North Boundary at School House No. 10.
- Polling District No. 3**—Comprising the Eighth, Ninth, Tenth, Eleventh, Twelfth, Thirteenth, Fourteenth, Fifteenth, Sixteenth, Seventeenth, Eighteenth, Nineteenth, Twentieth, Twenty-first, Twenty-second, Twenty-third, Twenty-fourth, Twenty-fifth, Twenty-sixth, Twenty-seventh, Twenty-eighth, Twenty-ninth, Thirtieth, Thirty-first, Thirty-second, Thirty-third, Thirty-fourth, Thirty-fifth, Thirty-sixth, Thirty-seventh, Thirty-eighth, Thirty-ninth, and Fortieth Concessions, and the Eleventh Concession from and including Lot Sixteen to North Boundary; and North Boundary Lots Fourteen to Twenty inclusive; and Lots Fourteen to Twenty inclusive, South Boundary at Town Hall, Zurich.
- Polling District No. 4**—Comprising Lots Three to Fifteen inclusive, on the Eleventh Concession; and Concessions Twelve, Thirteen, Fourteen, Fifteen, Sixteen, Seventeen, Eighteen, Nineteen, Twenty, Twenty-one, Twenty-two, Twenty-three, Twenty-four, Twenty-five inclusive, and South Boundary from Lots Three to Fifteen inclusive at School House No. 4.
- Polling District No. 5**—Comprising the Fourteenth, Fifteenth, Sixteenth, Seventeenth, Eighteenth, Nineteenth, Twentieth, Twenty-first, Twenty-second, Twenty-third, Twenty-fourth, Twenty-fifth, Twenty-sixth, Twenty-seventh, Twenty-eighth, Twenty-ninth, Thirtieth, Thirty-first, Thirty-second, Thirty-third, Thirty-fourth, Thirty-fifth, Thirty-sixth, Thirty-seventh, Thirty-eighth, Thirty-ninth, and Fortieth Concessions and Boundary Lots from Twenty-six to Thirty inclusive, at School House No. 12, Con. 15.

And further that on the Twenty-first day of September, at 11 a. m. at my office Goderich, I shall open the Ballot Boxes, sum up the votes given and the persons are hereby required to take notice and to govern themselves accordingly.

Given under my hand at Goderich this Twenty-Fourth day of August, in the year 1878.

Signal Print, Goderich.

OF HENSALL,

in the County of Huron, on the

month of September,

represent them in the House of Commons of Canada. And that in case a poll be opened on the seventeenth day of the month of September, in the year 1878, from the in the afternoon in each of the Polling Districts, that is to say:

TOWNSHIP OF STANLEY.

Comprising Concessions 1, 2, 3 and those of the Bayfield Road, together with Lots of Bayfield Road North and Bayfield Road and Lots 2 to 5, inclusive, in the South School House Sec. 10

Comprising the Lots in Concessions 4 and 5, of the Bayfield Road, and in Concessions 6 and 7, to 23, inclusive, in the Bayfield Road North, Bayfield Road South, and Lots 6 to 14, inclusive, at Town Hall, Varna.

Comprising the Lots in Concessions 8, 9, 10 and 11, in the South School House, Goshen Line Sec. 5.

Comprising the Lots in Concessions 12, 13, 14 and 15, in the South School House, and Lake Road West together with Lots 32 to 36, inclusive, at Delgaty's School

TOWNSHIP OF HAY.

Comprising the First, Second, Third, Fourth, Fifth, Sixth, Seventh, Eighth, Ninth, Tenth, Eleventh, Twelfth, Thirteenth, Fourteenth, Fifteenth, Sixteenth, Seventeenth, Eighteenth, Nineteenth, Twentieth, Twenty-first, Twenty-second, Twenty-third, Twenty-fourth, Twenty-fifth, Twenty-sixth, Twenty-seventh, Twenty-eighth, Twenty-ninth, Thirtieth, Thirty-first, Thirty-second, Thirty-third, Thirty-fourth, Thirty-fifth, Thirty-sixth, Thirty-seventh, Thirty-eighth, Thirty-ninth, and Fortieth Concessions, from the South Boundary to the North Boundary, and South Boundary Lots 1 to 10, inclusive at School House No. 2.

Comprising the First, Second, Third, Fourth, Fifth, Sixth, Seventh, Eighth, Ninth, Tenth, Eleventh, Twelfth, Thirteenth, Fourteenth, Fifteenth, Sixteenth, Seventeenth, Eighteenth, Nineteenth, Twentieth, Twenty-first, Twenty-second, Twenty-third, Twenty-fourth, Twenty-fifth, Twenty-sixth, Twenty-seventh, Twenty-eighth, Twenty-ninth, Thirtieth, Thirty-first, Thirty-second, Thirty-third, Thirty-fourth, Thirty-fifth, Thirty-sixth, Thirty-seventh, Thirty-eighth, Thirty-ninth, and Fortieth Concessions, including Lots Twenty-first, Twenty-second, Twenty-third, Twenty-fourth, Twenty-fifth, Twenty-sixth, Twenty-seventh, Twenty-eighth, Twenty-ninth, Thirtieth, Thirty-first, Thirty-second, Thirty-third, Thirty-fourth, Thirty-fifth, Thirty-sixth, Thirty-seventh, Thirty-eighth, Thirty-ninth, and Fortieth Concessions, and Lots Two to Thirteen inclusive on the South Boundary at School House No. 10.

Comprising the Eighth, Ninth and Tenth Concessions, from the South Boundary to the North Boundary, and including Lots 1 to 10, inclusive, and North Boundary Lots from 11 to 20, inclusive; and Lots Fourteen to Nineteen inclusive, at Town Hall, Zurich.

Comprising Lots Three to Fifteen inclusive in the South School House, and Concessions Twelve and Thirteen, from the South Boundary to the North Boundary, from Twenty-two to Twenty-third, inclusive, at School House No. 4.

Comprising the Fourteenth, Fifteenth, Sixteenth, Seventeenth, Eighteenth, Nineteenth, Twentieth, Twenty-first, Twenty-second, Twenty-third, Twenty-fourth, Twenty-fifth, Twenty-sixth, Twenty-seventh, Twenty-eighth, Twenty-ninth, Thirtieth, Thirty-first, Thirty-second, Thirty-third, Thirty-fourth, Thirty-fifth, Thirty-sixth, Thirty-seventh, Thirty-eighth, Thirty-ninth, and Fortieth Concessions, Lake Road East, and Lake Road West together with Lots from Twenty-six to Thirty-six, inclusive, at School House No. 12, Con. 15.

FOR THE TOWNSHIP OF STEPHEN.

Polling District No. 1.—Comprising Concessions 1, 2, 3, 4, and Boundary Lots 4, 5, 6, 7, at School House No. 1, Lot 7, Con. 2

Polling District No. 2.—Comprising Concessions 5, 6, 7, and Boundary Lots 8, 9, 10, 11, 12 and 13, at Town Hall, Crediton.

Polling District No. 3.—Comprising Concessions 8, 9, 10, 11, 12 and Boundary Lots 14 to 23 inclusive, at School House No. 6, Lot 11, Con. 11.

Polling District No. 4.—Comprising Concessions 13, 14, 15, 16, 17, 18, 19 and S. B. Lots 24 to 34 inclusive and N. E. Lots 24 to 34 inclusive, at Pratt's Hall, Shipha.

Polling District No. 5.—Comprising Concessions 20, 21, 22, Sable, A., B., L. R. E., L. B. W. and N. E. 35, 36, 37, 38 and S. B. 36 to 43 inclusive, at School House No. 8, Grand Bend.

FOR THE TOWNSHIP OF USBORNE.

Polling District No. 1.—Comprising Lots 1 to 24 inclusive, in the 1st Concession; all the Lots South of the Sideline between Lots 15 and 16 in the 2, 3, 4, 5, 6 and 7 Concessions; Lots 7 to 12 inclusive, S. W. B., at Town Hall, Elmville.

Polling District No. 2.—Comprising Lots 21 to 35 inclusive, in the 1st Concession; all the Lots North of the Sideline between Lots 14 and 16 in the 2, 3, 4, 5 and 6 Concessions; Lots 1 to 10 inclusive; N. and S. Thames Road; Lots 24 to 30 inclusive N. E. Boundary, at Thomas Allen's House, Lot 6, N. Thames Road.

Polling District No. 3.—Comprising Lots 12 and 13 in the 2, 3, 4, 5, 6, 7, 8, 9, 10, 11, 12, 13 and 14th Concessions, Lots 13 and 14 S. W. Boundary; Lots 1 to 25 inclusive S. E. B., at Thomas Ferrin's House, Lot 3, Con. 10.

Polling District No. 4.—Comprising all the Lots North of the Sideline between Lots 15 and 16, Con. 7; and all the Lots North of the Sideline between Lots 12 and 13 in the 2, 3, 4, 5, 6, 7, 8, 9, 10, 11, 12, 13 and 14th Concessions; Lots 14 to 18 inclusive in the 15th Concession; Lots 1 and 2 S. E. Boundary; all Lots on the Thames Road East of the Con. Road between Lots 10 and 11; Lots 11 to 23 inclusive N. E. B., at Village of Macquhar.

FOR THE TOWN CLINTON.

Polling District No. 1.—St. Andrew's Ward, Town Hall

Polling District No. 2.—St. James' Ward, Geo. Diehls' Cabinet Shop, Victoria St.

Polling District No. 3.—St. John's Ward, Rumball & Leslie's Waggon Shop, Huron St.

Polling District No. 4.—St. George's Ward, Cantelon Bros. Waggon Shop, Albert St.

FOR THE VILLAGE OF BAYFIELD.

Poll at Homan's Tin Shop.

Boxes, sum up the votes given for the several candidates and return as elected the one having the majority of votes. Of which all

ROBERT GIBBONS,

Returning Officer.

