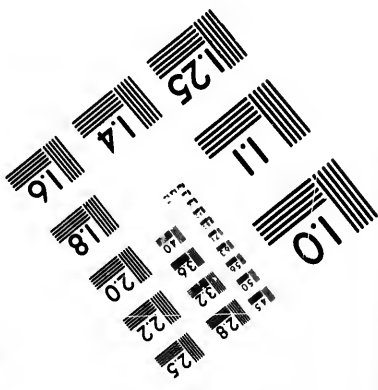
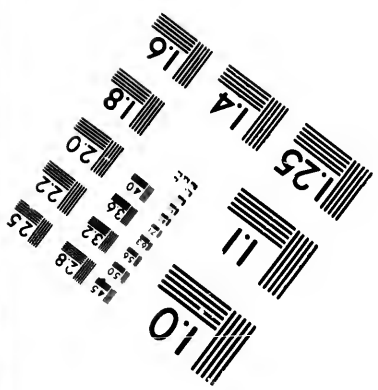
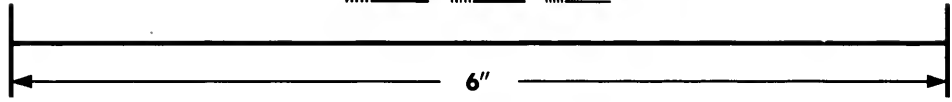
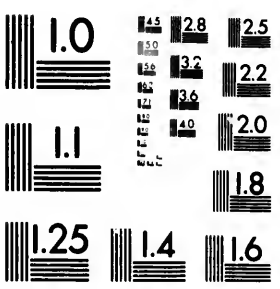


**IMAGE EVALUATION
TEST TARGET (MT-3)**



**Photographic
Sciences
Corporation**

23 WEST MAIN STREET
WEBSTER, N.Y. 14580
(716) 872-4503

**CIHM/ICMH
Microfiche
Series.**

**CIHM/ICMH
Collection de
microfiches.**



Canadian Institute for Historical Microreproductions / Institut canadien de microreproductions historiques

© 1986

Technical and Bibliographic Notes/Notes techniques et bibliographiques

The Institute has attempted to obtain the best original copy available for filming. Features of this copy which may be bibliographically unique, which may alter any of the images in the reproduction, or which may significantly change the usual method of filming, are checked below.

L'Institut a microfilmé le meilleur exemplaire qu'il lui a été possible de se procurer. Les détails de cet exemplaire qui sont peut-être uniques du point de vue bibliographique, qui peuvent modifier une image reproduite, ou qui peuvent exiger une modification dans la méthode normale de filmage sont indiqués ci-dessous.

- Coloured covers/
Couverture de couleur
- Covers damaged/
Couverture endommagée
- Covers restored and/or laminated/
Couverture restaurée et/ou pelliculée
- Cover title missing/
Le titre de couverture manque
- Coloured maps/
Cartes géographiques en couleur
- Coloured ink (i.e. other than blue or black)/
Encre de couleur (i.e. autre que bleue ou noire)
- Coloured plates and/or illustrations/
Planches et/ou illustrations en couleur
- Bound with other material/
Relié avec d'autres documents
- Tight binding may cause shadows or distortion along interior margin/
La reliure serrée peut causer de l'ombre ou de la distorsion le long de la marge intérieure
- Blank leaves added during restoration may appear within the text. Whenever possible, these have been omitted from filming/
Il se peut que certaines pages blanches ajoutées lors d'une restauration apparaissent dans le texte, mais, lorsque cela était possible, ces pages n'ont pas été filmées.
- Additional comments:/
Commentaires supplémentaires:

- Coloured pages/
Pages de couleur
- Pages damaged/
Pages endommagées
- Pages restored and/or laminated/
Pages restaurées et/ou pelliculées
- Pages discoloured, stained or foxed/
Pages décolorées, tachetées ou piquées
- Pages detached/
Pages détachées
- Showthrough/
Transparence
- Quality of print varies/
Qualité inégale de l'impression
- Includes supplementary material/
Comprend du matériel supplémentaire
- Only edition available/
Seule édition disponible
- Pages wholly or partially obscured by errata slips, tissues, etc., have been refilmed to ensure the best possible image/
Les pages totalement ou partiellement obscurcies par un feuillet d'errata, une pelure, etc., ont été filmées à nouveau de façon à obtenir la meilleure image possible.

This item is filmed at the reduction ratio checked below/
Ce document est filmé au taux de réduction indiqué ci-dessous.

10X	14X	18X	22X	26X	30X
<input type="checkbox"/>	<input type="checkbox"/>	<input type="checkbox"/>	<input type="checkbox"/>	<input checked="" type="checkbox"/>	<input type="checkbox"/>
12X	16X	20X	24X	28X	32X

The copy filmed here has been reproduced thanks to the generosity of:

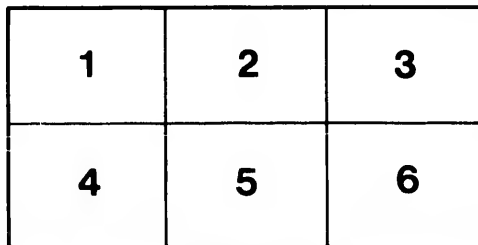
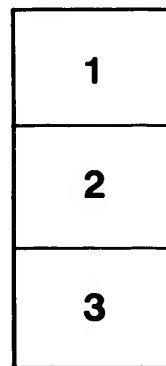
National Library of Canada

The images appearing here are the best quality possible considering the condition and legibility of the original copy and in keeping with the filming contract specifications.

Original copies in printed paper covers are filmed beginning with the front cover and ending on the last page with a printed or illustrated impression, or the back cover when appropriate. All other original copies are filmed beginning on the first page with a printed or illustrated impression, and ending on the last page with a printed or illustrated impression.

The last recorded frame on each microfiche shall contain the symbol \rightarrow (meaning "CONTINUED"), or the symbol ∇ (meaning "END"), whichever applies.

Maps, plates, charts, etc., may be filmed at different reduction ratios. Those too large to be entirely included in one exposure are filmed beginning in the upper left hand corner, left to right and top to bottom, as many frames as required. The following diagrams illustrate the method:



L'exemplaire filmé fut reproduit grâce à la générosité de:

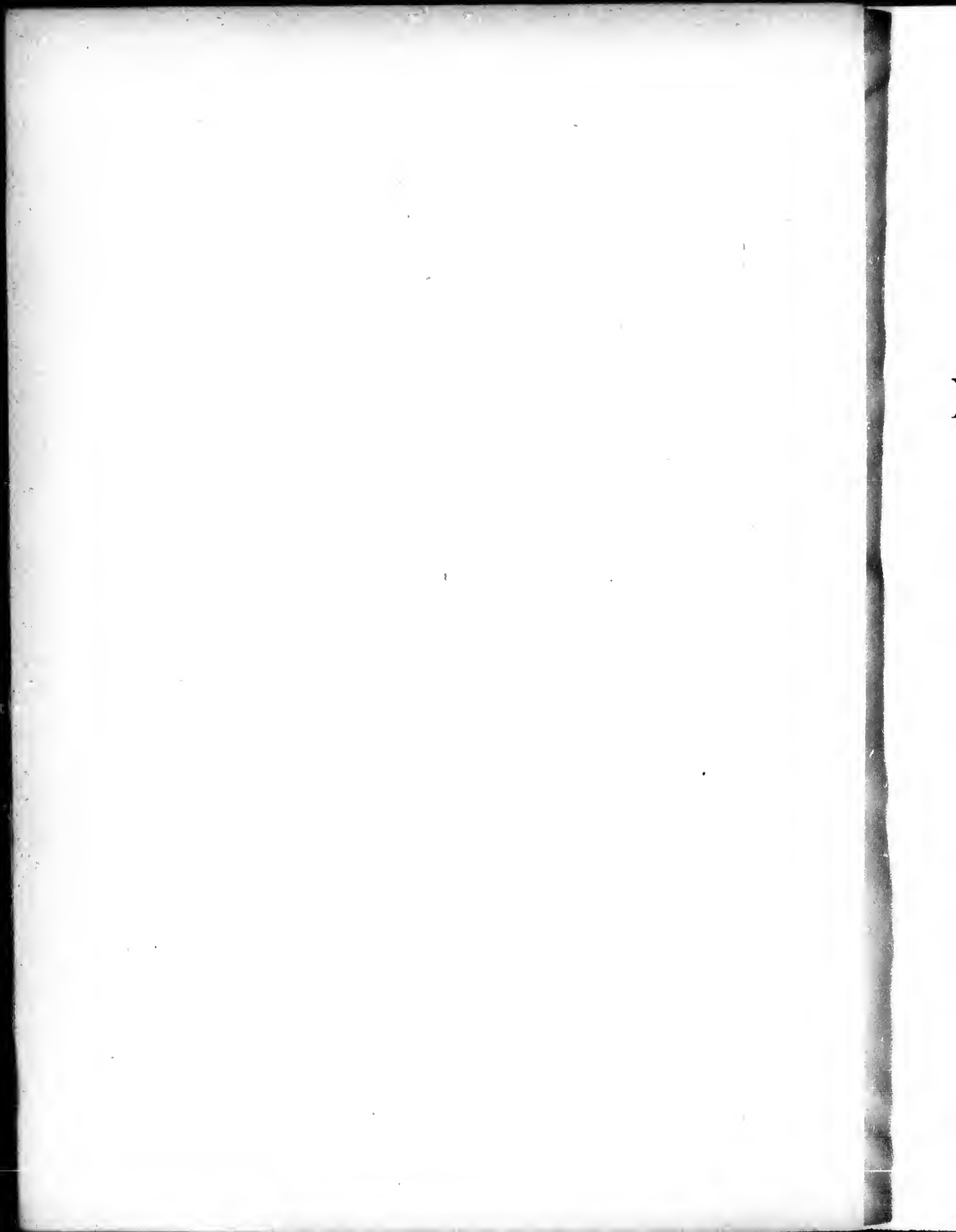
Bibliothèque nationale du Canada

Les images suivantes ont été reproduites avec le plus grand soin, compte tenu de la condition et de la netteté de l'exemplaire filmé, et en conformité avec les conditions du contrat de filmage.

Les exemplaires originaux dont la couverture en papier est imprimée sont filmés en commençant par le premier plat et en terminant soit par la dernière page qui comporte une empreinte d'impression ou d'illustration, soit par le second plat, selon le cas. Tous les autres exemplaires originaux sont filmés en commençant par la première page qui comporte une empreinte d'impression ou d'illustration et en terminant par la dernière page qui comporte une telle empreinte.

Un des symboles suivants apparaîtra sur la dernière image de chaque microfiche, selon le cas: le symbole \rightarrow signifie "A SUIVRE", le symbole ∇ signifie "FIN".

Les cartes, planches, tableaux, etc., peuvent être filmés à des taux de réduction différents. Lorsque le document est trop grand pour être reproduit en un seul cliché, il est filmé à partir de l'angle supérieur gauche, de gauche à droite, et de haut en bas, en prenant le nombre d'images nécessaire. Les diagrammes suivants illustrent la méthode.



vol 98 1116

No. 30.

BUREAU OF NAVIGATION—HYDROGRAPHIC OFFICE.

No. 1.

LIST OF LIGHTS

OF

NORTH AND SOUTH AMERICA
(EAST AND WEST COASTS),

INCLUDING

*BRITISH NORTH AMERICA; THE WEST INDIA ISLANDS, AND THE
ADJACENT COASTS; THE COAST OF BRAZIL, ETC., TO CAPE
HORN; THE PACIFIC COAST OF AMERICA,
AND THE PACIFIC ISLANDS.*

(The Lights of the Coast, &c., of the United States will be found in the Lists published
by the U. S. Light-house Board.)

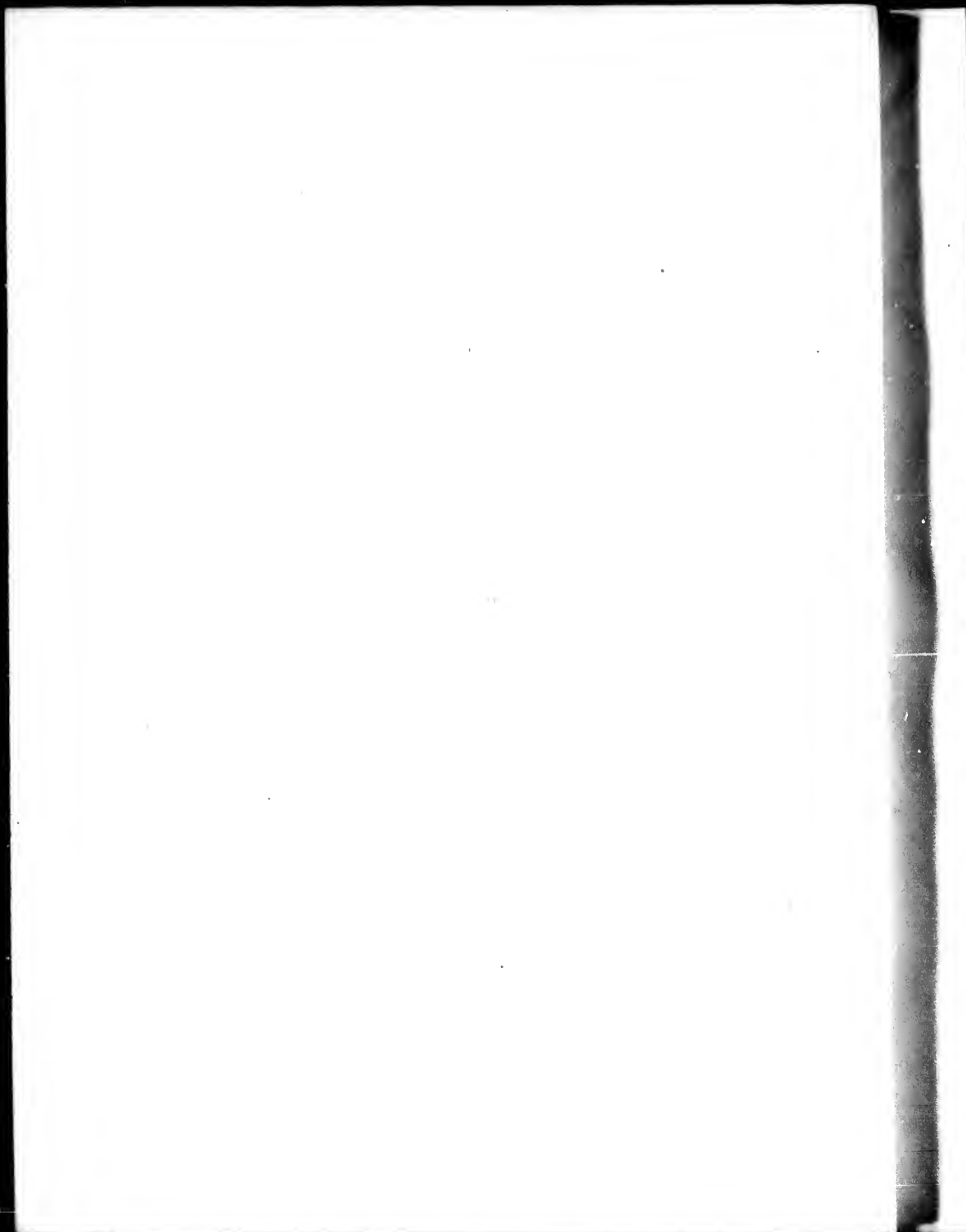
Corrected to January, 1873.

BY LIEUT. COMMANDER FELIX MCCURLEY, U. S. N.

(Navigators are requested to inform the U. S. Hydrographic Office, Washington, D. C., of any
omissions or errors they may discover in this List.)

Price, 30 Cents.

WASHINGTON:
GOVERNMENT PRINTING OFFICE,
1873.



ABBREVIATIONS AND EXPLANATIONS.

LIGHTS.

F. Fixed or steady.

FL. Flashing. Showing five or more flashes and eclipses, alternately, in a minute.

F. & FL. Fixed light, with a white or red flash, in addition (preceded and followed by a short eclipse), at intervals.

REV. Revolving. Lights gradually increasing to full effect, and gradually decreasing to eclipse, at equal intervals.

INT. Intermittent. Suddenly appearing in view, remaining visible for a certain time, and then as suddenly eclipsed for a shorter time.

ALT. Alternating. Red and bright light, alternately, at equal intervals, without any intervening eclipse.

ILLUMINATING APPARATUS.

C. Catoptric, or by metallic reflectors.

D. Dioptric, or by refracting lenses.

ORD. Order or class of apparatus, numbered from the first to the sixth order.

N. North.		E. East.		S. South.		W. West.
B. Brazil.		Dn. Danish.		M. Mexico.		Spa. Spain.
B.A. Buenos Ayres.		Dn. Dutch.		N.G. Nueva Grenada.		U.S. United States.
B.O. Banda Oriental.		E. England.		P. Peru.		V. Venezuela.
C. Chilé.		F. France.		R. Russia.		

The bearings are magnetic, and are given *from* the ship, *not from* the light.

Measurements are in English feet, yards, and nautical miles.

The distance the lights are visible is calculated from a height of fifteen feet above the level of the sea at high water.

TABLE II.

Table for finding the distance of an object by two bearings, and the distance run between them.

Points.	Difference between the course and the FIRST bearing—points.																						
	2	2½	3	3½	4	4½	5	5½	6	6½	7	7½	8	8½	9	9½	10	10½					
Difference between the course and the SECOND bearing.	4	1.00																					
	4½	0.81	1.23																				
	5	0.69	1.00	1.45																			
	5½	0.60	0.85	1.17	1.66																		
	6	0.54	0.74	1.00	1.35	1.85																	
	6½	0.49	0.67	0.88	1.14	1.50	2.02																
	7	0.46	0.61	0.79	1.00	1.27	1.64	2.17															
	7½	0.43	0.57	0.72	0.90	1.11	1.39	1.77	2.30														
	8	0.41	0.53	0.67	0.82	1.00	1.22	1.50	1.87	2.31													
	8½	0.40	0.51	0.63	0.76	0.92	1.09	1.31	1.58	1.96	2.50												
	9	0.39	0.49	0.60	0.72	0.85	1.00	1.18	1.39	1.66	2.03	2.56											
	9½	0.38	0.48	0.58	0.69	0.80	0.93	1.08	1.25	1.46	1.72	2.08	2.60										
	10	0.38	0.47	0.57	0.66	0.76	0.88	1.00	1.14	1.31	1.51	1.76	2.11	2.61									
10½	0.38	0.47	0.56	0.65	0.74	0.84	0.94	1.06	1.19	1.35	1.55	1.79	2.12	2.60									
11	0.39	0.47	0.56	0.64	0.72	0.81	0.90	1.00	1.11	1.24	1.39	1.57	1.80	2.11	2.56								
11½	0.40	0.48	0.56	0.63	0.71	0.79	0.87	0.95	1.05	1.15	1.27	1.41	1.58	1.79	2.08	2.50							
12	0.41	0.49	0.57	0.64	0.71	0.78	0.85	0.92	1.00	1.08	1.18	1.29	1.41	1.57	1.76	2.03	2.41						
12½	0.43	0.51	0.58	0.65	0.71	0.77	0.83	0.90	0.97	1.03	1.11	1.20	1.29	1.41	1.55	1.72	1.96	2.30					

RULE.—Multiply the distance run in the interval between the two bearings by the number found in the table under the difference between the course and first bearing, and opposite the difference between the course and second bearing. The product is the distance at the time the second bearing was taken.

EXAMPLE.—A light-house, when first seen, bore W. N.W.; after running W, by S. 16 miles, it bore N. ½ W. Required, its distance when the second bearing was taken.

Difference between course and first bearing = 3 points.
 Difference between course and second bearing = 5½ points.
 Corresponding tabular number 0.51
 And 16 miles . . 0.61 = 10.08 miles, the distance required.

stances, geographic nautical miles.
 18.14
 19.87
 21.46
 22.94
 24.33
 25.65
 26.90
 28.10
 29.25
 30.28
 32.45
 34.54
 36.28

water, 17

LIGHTS.

LABRADOR.

Number.	Height of light above sea level.	Distance visible in nautical miles.	Character of light-house or vessel.	Height, in feet, of building from base to vane.	Character and order of illuminating apparatus.	Year lighted.	Remarks.
1	470	24	Circular tower; clap-boarded, and white.	62	D., 1st ord.	1858	Lighted from April 1 to Dec. 15. Visible from about N.W. by N. round by S. to E. A gun is fired every hour during fog and snow-storms. Depot of provisions here for shipwrecked mariners. Var'n in 1870, 32° 10' W.
2	138	20	Hexagonal white building, 100 feet from keeper's dwelling.	40	C.	1871	
3	153	18	Circular tower; clap-boarded, and white.	100	D., 2d ord.	1858	Lighted from April 1 to Dec. 15. A gun fired here every hour during fog and snow-storms.

NEWFOUNDLAND.

4	130	18	Hexagonal white tower, 100 feet from keeper's dwelling.	40	C.	1871	
5	100	12	Circular brick tower.	7	D.	1858	Var'n in 1870, 34° W.
6							
7	150	16	Square tower, with vertical stripes red and white.	36	D., 1st ord.	1843	RED and WHITE, alternately, in every direction seaward. Visible for a quarter of a minute, and half a minute dark. Kept open at Spillers Point clears the Flowers Rocks. Var'n in 1870, 32° 45' W.
8							
9	92	15	Wood; white; roof red.		C., 4th ord.	1857	Visible seaward between the bearings of W. S.W. and N.E.
10							
11	380	24	Circular; brick.	31	C., 1st ord.	1858	When the S. part of the island bears N. N.E. $\frac{1}{2}$ E. within the distance of 8 miles, the light is not visible, being obscured by the high land. The keeper's dwelling is white and roof red.
12							
13	151	18	Square wooden house; roof white and red stripes.	35	1869	On keeper's dwelling. Two bright and one red flash. Visible between the bearings of N. N.E. to S. S.W. Var'n in 1870, 31° W.
14							
15	{ 40 17 }	3 & 11	Wood; white.	38	Gas.	1853	West leads in to clear the spit of 8 feet. Appears as a double light for 3 miles only. Obscured by the Salvage on the bearings of W. $\frac{1}{2}$ S.
16							

NEWFOUNDLAND—Continued.

Number.	Height of light above sea level.	Distance visible, in nautical miles.	Character of light-house or tower.	Height, in feet, of building from base to vane.	Character and order of illuminating apparatus.	Year lighted.	Remarks.
17	114	10	Stone; square	30	C, 4th ord.	1834	On keeper's dwelling. Visible seaward between the bearings of W. 8 W. and S. S. E. When Cape Spear or St. John's Harbor is enveloped in fog, a gun is fired every hour during day light. St. John's Chain Rock Battery in lon. 52° 49' 47" W.
18							
19	225					1863	
20							These two lights in one lens through the Narrows, S. W. 1 W. Var'n in 1850, 31° 10' W.
21	50					1863	
22							
23	264	22	Wood; square tower red and white horizontal.	38		1835	Visible seaward.
24							
25	200	16	Red brick tower.			1871	Keeper's dwelling painted white, with red roof.
26							
27	180	19	Circular; S. E. face of light-house striped red and white, vertical.	40	C, 1st ord.	1856	A conical beacon stands 50 yards S. from light-house, and telegraph station N. 340 yards from light-house. Visible between the bearings E. N. E. and W. S. W.
28							
29	314	24	Circular; red and white bands.	56		1851	Visible in all directions seaward between the bearings of W by S, and S. E. Var'n in 1870, 50° 30' W.
30							
31	330	26	Circular; brick.	40	D., 1st ord.	1860	RED and WHITE, alternately.
32							
33	430	27	Circular	25	D., 1st ord.	1858	On keeper's dwelling.
34							

NEWFOUNDLAND—Continued.

Number.	Name.	Location.	Latitude.		Longitude.		Number of lights and relative positions.	Character of light.	Interval of revolution or flash.
			N. ° ' "	W. ° ' "	W. ° ' "	W. ° ' "			
35	ST. PIERRE ISLAND . . .	Galantry Head	46 46 3	56 9 7	1	Fl.	Flash every 20 seconds.		
36									
37		Cannon Point, St. Pierre Harbor	46 17 2	56 9 38	1	F.			
38									
39		N.W. of above 0.4 mile			1	F.			
40									
41	FORTUNE BAY	Brunet Island, Mercer Head S. part of island.	47 15 32	55 51 50	1	Fl.	Every 10 seconds		
42									
43	CAPE RAY	W. side of Cape Ray	47 37 0	59 18 0	1	Fl.	Every 10 seconds		
44									
ST. LAWRENCE GULF AND RIVER.									
45	ST. PAUL ISLAND	On rock, 25 feet from island, N.E. point.	47 13 50	60 8 20	1	F.			
46									
47		S.W. point	47 11 30	60 9 36	1	Rev.	Every minute . . .		
48									
49	AMHERST ISLAND	South Cape	47 13 0	61 58 0	1	Alt.	Every minute . . .		
50									

NEWFOUNDLAND—Continued.

Number.	Height of light above sea level.	Distance visible, in nautical miles.	Character of light-house or vessel.	Height, in feet, of building from base to vane.	Character and order of illuminating apparatus.	Year lighted.	Remarks.
35	210	20	Nearly square; white ...	36	D., 5d. ord.	1862	RED flash, succeeded by two BRIGHT ones. Two guns are fired, at 3 minutes' interval, every 2 hours during fog, from 6 a. m. to 6 p. m. Obscured on the N. by the bluffs of St. Pierre, Var'n in 1870, 28° 5' W.
36							
37	36	6	Square; white.....		C., 4th ord.		These two lights kept in one N.W. lead mid-channel through S. entrance, and indicate the best water between the Herbrand Rocks and Dog Island.
38							
39	64	3	Square; white		C., 4th ord.	1862	RED light, kept in sight to the left of Cape Eagle, working into the S.E. passage, clears to S. of Cape Rouge Shoals. Var'n in 1870, 28° 10' W.
40							
41	408	25	White; a square house; roof red; tower rising from the center.	30	D., 3d ord.	1865	Visible in all directions, except when obscured by the land between E. S.E. and S.
42							
43	41	20	Wooden hexagonal tower; white.		C.....	1871	The powerful flashing white light make a complete revolution in 24 minutes. At a long distance it appears as a steady light.
44							

ST. LAWRENCE GULF AND RIVER.

45	140	20	Octagonal; wood; white.	40	D., 3d ord.	1839	Obscured between N. by E. & E. N.E. Extinguished when the gulf is obstructed by ice. Var'n in 1870, 27° 10' W.
46							
47	140	20	Octagonal; wood; white.	40	D., 3d ord.	1831	Steam fog-whistle sounded during a fog, and a gun fired every 4 hours, commencing at 4 a. m. Visible on all bearings, except between S. S.E. and W. Extinguished when the gulf is obstructed with ice.
48							
49	20	Hexagonal wooden tower; white.		C.....	1871	Shows red 30 seconds, white 30 seconds.
50							

ST. LAWRENCE GULF AND RIVER—Continued.

Number	Height of light above sea level.	Distance visible, in nautical miles.	Character of light-house or vessel.	Height, in feet, of building from base to vane.	Character and order of illuminating apparatus.	Year lighted.	Remarks.
51	140	21	White frame building....	50	D., 2d ord.	1870	White dwelling 200 feet distant. Var'n in 1870, 27° 30' W.
52							
53	136	16	Circular tower; faced, clapboarded, and white.	112	D., 1st ord.	1858	A gun is fired every hour during fog and snow-storms. Var'n in 1869, 26° 16' W.
54							
55	49	11				1867	Var'n in 1870, 26° 26' W.
56							
57	20	7					RED light only when mail steamers are expected.
58							
59	{ 25 } { 29 }	7	Red light-ship			{ 1871 } { 1872 }	{ For guiding vessels into the harbor.
60							
61	110	15	Circular tower; faced, clapboarded, and white.	80		1835	The light-house must always be kept open southward of Cormorant Point. Visible between the bearings of N. N.W. to N.E. by N. Depot of provisions here for shipwrecked mariners. Lighted from April 1, to December 15.
62							
63	75	14	White hexagonal wooden building.	54	C.....	1871	Keeper's dwelling, also of wood, painted white, and stands about 150 feet E. from the tower.
64							
65	100	15	Circular tower; gray stones.	75		1831	Visible between the bearings of N. N.W. and S.E. by E. round by N.
66							
67	112	15	Circular tower; clapboarded, and white.	109	D., 2d ord.	1858	A gun is fired every hour during fog and snow-storms. Depot of provisions for shipwrecked mariners.
68							
69	147	R. 15 D. 20	Hexagonal white wooden building.	54	C.....	1871	Shows RED and BRIGHT every 4 minutes, there being an interval of 2 minutes between each flash.
70							

ST. LAWRENCE GULF AND RIVER—Continued.

Number.	Height of light above sea level.	Distance visible, in nautical miles.	Character of light-house or vessel.	Height, in feet, of building from base to vane.	Character and order of illuminating apparatus.	Year lighted.	Remarks.
71	110	18	Low square tower, with dwelling-house combined, all white.	37	C.....	1871	Is visible from all points seaward, except east, in which direction it is obscured by Chate Point and Cape Anne.
72							
73	195	20	Square white tower, over house.	35	C.....	1871	Destroyed by fire. Discontinued for the present.
74	70	15	Octagonal tower, on keeper's dwelling.	35	C.....	1871	
75	100	15	Circular tower; chip-boarded, and white.	75	1830	Depot of provisions for shipwrecked mariners. A gun will be fired every hour during fogs or snow-storms from April 1 to Dec. 15. Var'n in 1870, 259 W.
76	{ 34 37 }	12	Black light-vessel, with "Manicougan, Quebec," on her stern.	D.....	1872	The vessel is moored in 25 fathoms, and lies 4 miles from land. East Peninsula bears N.E., West Peninsula W. N.W. During thick and foggy weather and during snow-storms a steam fog-whistle will be sounded as follows: A blast of 8 seconds, an interval of 8 seconds, then another blast of 8 seconds, after which an interval of 2 minutes and 20 seconds. It will probably be heard at the following distances: In calm weather or with the wind, from 10 to 20 miles; in stormy weather or against the wind, from 3 to 8 miles.
77	43	10	Octagonal; white	1830	Pilots stationed here. Lighted from April 10 to Dec. 10.
78							
79	112	17	Circular; gray stones	65	1844	A gun fired every half hour during fog and snow-storms from April 10 to Dec. 15. Lighted from April 10 to Dec. 15.
80							
81	34	12	Red light-vessel, with "Red Island Light" on her sides.	C.....	1871	The vessel is moored during season of navigation in 10 fathoms, in a northeasterly direction from Red Islet, with the latter a little open of Hare Island, and with the RED BUOY about 1/2 mile distant in a W. S.W. direction. During thick or foggy weather or snow-storms a steam fog-whistle will be sounded from the light-vessel 10 seconds in every minute. The whistle will probably be heard at the following distances: In calm weather 15 miles. With the wind 20 miles. Stormy weather 5 to 8 miles. Against the wind 3 to 5 miles.
82	35	10	Square; wood, painted white.	29	C.....	1872	
83	75	12	Circular; gray stones	51	1848	Lighted from April 10 to Dec. 10.
84							
85	60	13	Octagonal; chip-boarded, and white.	40	1809	Lighted from April 10 to Dec. 10. A gun fired every half hour during fog and snow-storms.
86							
87	78	10	Brick; drab color	39	D., 4th ord.	1862	Lighted from April 10 to Dec. 10.
88							

ST. LAWRENCE GULF AND RIVER—Continued.

Number.	Height of light above sea level.	Distance visible, in nautical miles.	Character of light-house or vessel.	Height, in feet, of building from base to vane.	Character and order of illuminating apparatus.	Year lighted.	Remarks.
89	180	12	Brick; drab color	39	D., 4th ord.	1862	Lighted from April 10 to Dec. 10.
90							
91	166	18	Wood.....	39	C.....	1862	Var'n in 1870, 19° 20' W.
92	{ ²⁴ 16}		Light-vessel; two masts.....			1871	In thick or foggy weather or snow-storms a bell will be tolled. If, from any accident, the light-vessel should be out of position, the light on the foremast only will be exhibited, and during the day the ball at the foremast-head will be taken down.
93		9	Two masts			1836	The ship's bell is kept tolling during fogs and snow-storms.
94							
95	68	13	Stone; conical; white ...	38		1843	Lighted from April 10 to Dec. 10.
96							

ST. LAWRENCE RIVER.

97	175	10	Square white wooden building.	24	C.....	1871	
98							
99	44	10	Wood.....	37	C.....	1862	Var'n in 1870, 17° 50' W.
100							
101	70	13	Wood.....	30	C.....	1862	
102	38	8	White.....		C.....	1869	
103	96	10	Wood; white			1858	Var'n in 1870, 15° 53' W.
104							
105	30	6	Wood; white.....	30		1842	A small light, to assist in keeping in channel for some distance up and down the river.
106							

ST. LAWRENCE RIVER—Continued.

Number.	Height of light above sea level.	Distance visible, in nautical miles.	Character of light-house or vessel.	Height, in feet, of building from base to vane.	Character and order of illuminating apparatus.	Year lighted.	Remarks.
107	{ 200 130 }	5	Both stone, and white; the lower lantern is on roof of house.			1842	These lights in one lead up Richelieu Channel to the light on Richelieu Island.
108							
109	{ 152 130 }	12	Wood; octagonal; white	{ 24 7 }		{ 1846 1824 }	These lights lead up the Richelieu. Var'o in 1876, 15° 30' W.
110							
111	57	6	Octagonal; stone			1843	This light and the lights on Platon Point are very nearly in the same line of bearing, namely, N. 73° E.
112							
113	35	5	Wood	8		1844	To show off Battures des Grondines, and to avoid Battures Cordin, and as a steering point for Richelieu.
114							
115	110	4	Wood	20		1856	Lead to and from Cap à la Roche and Cape Charles, and to answer as a steering point through Richelieu.
116							
117	{ 50 25 }	5 each.	Octagonal; wood; white.	30		1857	To lead off Cap à la Roche to Levrard.
118							
119	85	5	Wood; octagonal; white.	12		1844	To indicate the widest berth off Cap à la Roche. Var'n in 1873, 14° 10' W.
120							
121	{ 39 20 }	3	Wood; octagonal; white.	{ 21 11 }		1844	To lead through Levrard, and clear Batture S. Ann on S. and Poullier on N.
122							
123	30	4	Wood; octagonal; white.	10		1844	Steering point for lower part of Bay of Champlain.
124							

ST. LAWRENCE RIVER—Continued.

Number.	Height of light above sea level.	Distance visible, in nautical miles.	Character of light-house or vessel.	Height, in feet, of building from base to vane.	Character and order of illuminating apparatus.	Year lighted.	Remarks.
125	{ 53 } { 33 }	4	Wood; octagonal; white.	{ 13 } { 10 }		1843	To clear Batture Bigot. Var'n in 1870, 14° 29' W.
126							
127	{ 55 } { 35 }	6	Wood; octagonal; white.	{ 30 } { 10 }		1843	To clear Pouillier Provenché.
128							
129	{ 31 } { 12 }	3 each.		{ 21 } { 4 }		1839	These lights, in one with the eastern light-vessel on lake, lead up through the dredged channel. S. 70° W. High light removed in winter.
130							
131	71	12		24		1843	Shows the turn of channel at Point du Lac.
132							
133	15	6	Red.	8			Removed at the approach of winter on account of ice. On south side of Petite Traverse, off Rivière du Loup.
134							
135	15	6	Red.	8		1816	Removed at the approach of winter on account of ice. To indicate the turn of the channel, and leads to No. 2.
136							
137	15	6	Red.	8		1828	In connection with Isle à la Pierre, and bearing in line with No. 1, and to avoid Battures St Francis and à la Carpe. Var'n in 1870, 12° 55' W.
138							
139	30	6	Red.	20		1843	To lead from the entrance of the Batture of Lake St Peter to No. 1 light-vessel, up and down.
140							
141			Red.			1863	
142							
143	30	6	Red.				Indicates entrance to channel, and leads to No. 1.
144							

ST. LAWRENCE RIVER—Continued.

Number.	Height of light above sea level.	Distance visible, in nautical miles.	Character of light-house or vessel.	Height, in feet, of building from base to vane.	Character and order of illuminating apparatus.	Year lighted.	Remarks.
145	{ 21 } { 13 }	7	Red	{ 17 } { 9 }		1851	Leads to channel called Flat Island.
146							
147			Wood; white; square			1858	To lead into La Valtrie Channel and Isle Bouchard, and indicates the new channel to be kept in line till La Valtrie lights are brought to bear.
148							
149			Octagonal; wood; white			1866	To clear the island.
150							
151	{ 20 } { 14 }	4	Wood; white	{ 20 } { 14 }		1843	To lead through Isle d'In Bogue Channel, and to avoid Pouliller on the N. and shoal on S.
152							
153	21	4	Wood; white; octagonal			1831	To indicate the island, being extremely low land. Removed in winter on account of ice.
154							
155		4	Wood; white, square				Leads to entrance through Vercheres Channel, up and down the river. Var'n in 1870, 121° W.
156							
157	{ 53 } { 25 }	{ 6 } { 4 }	High and low; octagonal; wood; white			1846	To lead through the channel between Point aux Trembles and Varennes up to Longue Point.
158							
159	{ 28 } { 29 } each.	4	{ Wood; octagonal	{ 31 } { 21 }		1830	Indicates the deepest channel to and from the harbor. Var'n 1870, 11° 45' W.
160							
161		6	Square; wood; white	17		1849	Var'n in 1870, 11° 25' W.
162							

ST. LAWRENCE RIVER—Continued.

Interval of revolution or flash.	Number.	Height of light above sea level.	Distance visible, in nautical miles.	Character of light-house or vessel.	Height, in feet, of building from base to vane.	Character and order of illuminating apparatus.	Year lighted.	Remarks.
	163	20	6	Circular; iron; red			1849	
	164							
	165	30	6	Red				
	166							
	167	35	8	Wooden tower; hexagonal; two sides next to river white, the others brown.	25	C	1870	Can be seen on approaching it in both directions.
	168							
	169	21	6	Iron	17			
	170							
	171	29	7	Wood	25			
	172							
	173	36	9	Wood	17			
	174	45	6	Hexagonal white tower	30	C	1871	
	174½	35	6	Hexagonal white tower, on a pier.	30	C	1871	
	175	20	6	Red			1849	
	176							
	177		10	Wood; square frames			1850	In one lead to Chateaugay Light. Var'n in 1870, 11° W.
	178							
	179	20	8	Square; wood	20		{ 1845 1850 }	To be kept in one, when leaving the canal, till the upper lights come in one.
	180							

ST. LAWRENCE RIVER—Continued.

Number.	Name.	Location.	Latitude.		Longitude.	Number of lights and relative positions.	Character of light.	Interval of revolution or flash.		
			°	' "					°	' "
181	OFF GROSSE POINT.....	On piers in river.....		N. "	W. "	2	F.			
182										
183	ST. FRANCIS LAKE.	Coteau du lac..... N. shore, at head of rapids, in village.	45	16 30	74 11 45	1	F.			
184										
185			McGee's Point.....	N. shore.....	45	12 25	74 19 10	1	F.	
186										
187			Cherry Island.....	S. side of N. channel.....	45	9 —	74 22 —	1	F.	
188										
189			Cherry.....	Light-vessel above island.....	45	8 20	74 25 40	1	F.	
190										
191	Crib.....	N. side of channel, on a pier, 4 miles S. W. from Lancaster village.	45	7 —	74 30 —	1	F.			
192										
193		Cornwall Canal.....	45	1 15	74 55 25	1	F.			
194										
195	COLE'S SHOAL.....	On pier, 5 miles W. of Brockville, $\frac{1}{4}$ of a mile from N. shore.				1	F.			
196										
197	GRENADIER ISLAND.....	S. W. point of island, N. side of channel, 2 miles below Rockport.				1	F.			
198										
199	LYNDOCK ISLAND.....	S. W. point of island, S. side of channel, 5 miles W. of Rockport.				1	F.			
200										

ST. LAWRENCE RIVER—Continued.

Number.	Height of light above sea level.	Distance visible, in nautical miles.	Character of light-house or vessel.	Height, in feet, of building from base to vane.	Character and order of illuminating apparatus.	Year lighted.	Remarks.
181		3	Square; wood; red.....			1850	
182							
183	50	6	On top of a house.....	11		1818	Not lighted since 1863. Var'n in 1870, 10° 20' W.
184							
185	30	10	Square; wood.....	21			Midway between Coteau and Cherry Island.
186							
187	40	10	Square; wood.....	50		1847	
188							
189						1849	Opposite the light there is a beacon, N. of the channel.
190							
191	20	8	Square; wood.....	20		1844	
192							
193						1865	Var'n in 1870, 9° 40' W.
194							
195	33	6	White; square; wood....	31	C.....	1856	
196							
197	55	10	White; square; wood....	37	C.....	1856	
198							These small lights are for the purpose of marking out the channel through the "Thor" and Islands, between Brockville and Kingston. Var'n in 1870, 7° 15' W.
199	40	7	White; square; wood....	26	C.....	1856	
200							

ST. LAWRENCE RIVER—Continued.

Number.	Name.	Location.	Latitude.		Longitude.		Number of lights and relative positions.	Character of light.	Interval of revolution or flash.
			N. ° ' "	W. ° ' "	W. ° ' "	° ' "			
201	GANNIQUE NARROWS.	N.E. end of Little Slave Island, S. side of channel, 5 miles below Gannique.					1	F.	
202									
203	JACK-DRAW SHOAL.	On a pier, N. side of channel, 5 miles below Gannique.					1	F.	
204									
205	SPECTACLE SHOAL.	On a pier, N. side of channel, 2 miles W. of Gannique.	41 16 0		76 22 30		1	F.	
206									
207	RED HORSE ROCK.	On a pier, S.E. side of channel, $\frac{1}{4}$ a mile W. of No. 203.					1	F.	
208									
209	BURNT ISLAND.	S.E. point of island, N. side of channel, $\frac{1}{2}$ of a mile from No. 203.					1	F.	
210									
211	WOLFE ISLAND.	N.E. entrance point of island, 18 miles S.E. of Kingston.	41 14 0		76 10 —		1	F.	
212									

LAKE ONTARIO.

213	KINGSTON.	S.E. part of town.	41 13 30		76 29 0		1	F.	
214									
215	SNAKE ISLAND.	On pier on bar, N. side of chan- nel, 5 miles W. of Kingston.	41 11 30		76 22 —		1	F. red.	
216									
217	GAGE or SIMCOE.	S.W. point of island, Yeo Point, 9 miles W. of Kingston.	41 9 0		76 33 0		1	F.	
218	PIGEON ISLAND.	Near the center of the island.	41 4 5		76 22 30		1	Rev.	Every minute and 10 seconds.

ST. LAWRENCE RIVER—Continued.

Interval of revolution or flash.	Number.	Height of light above sea level.	Distance visible, in nautical miles.	Character of light-house or vessel.	Height, in feet, of building from base to vane.	Character and order of illuminating apparatus.	Year lighted.	Remarks.
	501	44	7	White; square; wood ...	37	C.....	1856	
	502							
	503	31	6	White; square; wood ...	29	C.....	1856	
	504							
	205	28	9	White; square; wood ...	26	C.....	1856	
	206							
	207	28	8	White; square; wood ...	26	C.....	1856	These small lights are for the purpose of marking out the channel through the Thousand Islands, between Brockville and Kingston. Var'n in 1870, 7° 15' W.
	208							
	209	64	10	White; square; wood ...	25	C.....	1856	
	210							
	211			White; square; wood ...		C.....	1856	
	212							

LAKE ONTARIO.

	213		4	Square; wood; white.....			1844	<i>Not lighted.</i> Latitude of court-house at Kingston, 44° 14' N.; long, 76° 28' 38" W. Var'o in 1870, 7° W.
	214							
	215	35	6	Stone; square.....	35		1858	
	216							
	217	45	15	Round; stone.....	40		1830	
	218	46	12	Tower on keeper's dwelling; white.	41	C.....	1871	

LAKE ONTARIO—Continued.

Number.	Height of light above sea level.	Distance visible, in nautical miles.	Character of light-house or vessel.	Height, in feet, of building from base to vane.	Character and order of illuminating apparatus.	Year lighted.	Remarks.
219	68	22	Round; stone.....	62		1828	
220							
221	10				
222	46	12	41	C.....	1870	Seen when approaching it from the E. or W.
223	62	21	Round; stone.....	60		1833	Var'n in 1870, 6° W.
224	40	10	Square white tower, on keeper's dwelling.		C.....	1871	Visible from all points of approach.
225	51	12	Stone.....	54	C.....	1856	
226							
227	67	18	Octagonal; stone.....	63		1840	
228							
229		3			1851	
230							
231	46	12	Square wooden tower, painted brown.	39	C.....	1870	Can be seen on approaching it from the N.E., E., and S.W.
232							
233	50	8	Square; wood; white....	16		1844	
234							
235	45	10	Octagon; stone.....	48		1840	Two miles off shore.
236							
237		4				{ RED, facing S. BRIGHT, facing E. and W.
238							
239		4	On a stone house.....				Var'n in 1870, 3° W.
240							

LAKE ONTARIO—Continued.

Number.	Name.	Location.	Latitude.		Longitude.	Number of lights and relative positions.	Character of light.	Interval of revolution or flash.
			N. ° ' "	W. ° ' "				
241 242	OSHAWA POINT	Pier head	43 52 0	78 47 0	1		F.	
243 44	WHITBY HARBOR	W. pier	43 51 0	78 56 —	1		F.	
245 246	PICKERING, or LIVER- POOL	E. pier head	43 48 45	79 2 0	1		F.	
247 248	TORONTO	Gibraltar Point, S.W. side of point, 1½ miles S. of Toronto.	43 37 0	79 23 30	1		F.	
249 250		Queen's Wharf, western part; the other on arm of pier.	43 38 10	79 23 45	2		F.	
251 252	CREDIT PORT	On pier	43 33 30	79 35 0	1		F.	
253 254	OAKVILLE	Pier head	43 26 45	79 40 30	1		F.	
255 256	BURLINGTON BAY	S. pier of entrance	43 18 0	79 48 50	2			
257 258	DALHOUSIE HARBOR	E. pier head	43 13 30	79 15 30	1		Rev.	

LAKE ERIE.

259 260	COLDBORNE PORT and RANGE LIGHT.	W. pier head	43 53 30	79 17 0	2			
------------	------------------------------------	--------------------	----------	---------	---	--	--	--

LAKE ONTARIO—Continued.

Number.	Height of light above sea level.	Distance visible, in nautical miles.	Character of light-house or vessel.	Height, in feet, of building from base to vane.	Character and order of illuminating apparatus.	Year lighted.	Remarks.
241						1863	
242							
243	12	5	Square; wood	8		1844	
244							
245						1863	
246							
247	66	18	Hexagonal; stone	62		1820	
248							
249	22	6	Wood; square; red	16		1838	RED light is on the arm of the pier. To be passed closely on port hand. Var'n in 1870, 3° W.
250							
251						1863	
252							
253	42	12	Wood; octagon	36		1836	
254							
255	{ 60 18	{ 15 4	{ One white; one red; square; octagon.	{ 54 14	{ {	{ 1838 1845	{ High light, RED.
256							
257	53	10	Wood	44		1852	Entrance to Welland Canal.
258							

LAKE ERIE.

259	{ 58 14	{ 12 8	{ Wood	{ 54 10	{ {	{ 1852	{ Entrance to Welland Canal.
260							

LAKE ERIE—Continued.

Number.	Name.	Location.	Latitude.		Longitude.	Number of lights and relative positions.	Character of light.	Interval of revolution or flash.
			N. ° ' "	W. ° ' "				
261	MOHAWK ISLAND	On an island between Colborne and Matland Ports, 1 mile S.W. of main land.	42 50 40	79 34 —	1	Rev.	Every 3 minutes.	
262								
263	MATLAND PORT	W. pier	42 52 0	79 37 0	1	F.		
264								
265	DOVEY PORT	W. pier	42 47 30	80 13 0	1	F.		
266								
267	LONG POINT, or NORTH FORELAND.	E. extremity	42 33 24	80 5 30	1	F.		
268								
269	BIG OTTER CREEK, or BURWELL PORT.	333 yards in shore	42 39 0	80 49 30	1	F.		
270								
271	CATFISH CREEK, or BRUCE PORT.	42 40 0	81 1 0	1	F.		
272								
273	STANLEY PORT	Extremity of W. pier	42 40 0	81 12 30	1	F.		
274								
275	PELÉE ISLAND	N.E. point ..	41 50 0	82 37 45	1	F.		
276								
277	PELÉE SPIT	On caisson, 2½ miles southerly from extreme end of point from N. shore.	41 52 30	82 29 45	1	F.		
278								
DETROIT RIVER.								
279	AMHERSTBURGH	Blanc Island, S. point ...	42 5 0	83 6 36	1	F.		
280								

LAKE ERIE—Continued.

Number.	Height of light above sea level.	Distance visible, in nautical miles.	Character of light, house or vessel.	Height, in feet, of building from base to vane.	Character and order of illuminating apparatus.	Year lighted.	Remarks.
261	64	10	Round; stone.....	60		1848	Var'n in 1870, 22° 40' W.
262							
263		10	Square; wood; white.....			1848	Grand River entrance.
264							
265	20	8	Square; wood; white....	20		1846	
266							
267	65	25	Octagon; wood.....	60		1843	Var'n in 1870, 12° 40' W.
268							
269	96	12	Octagon; wood.....	46		1840	
270							
271							
272							
273	20	4	Lantern.....	20		1841	
274							
275	45	9	Round; stone.....	40		1833	W. by N. clears Pelee Shoal. Var'n in 1870, 02° 45' E.
276							
277	76			61		1861	
278							

DETROIT RIVER.

279	56	18	Round; stone.....	40		1837	
280							

Interval of revolution or flash.

Every 3 minutes.

LAKE ST. CLAIR.

Number.	Height of light above sea level.	Distance visible, in nautical miles.	Character of light-house or vessel.	Height, in feet, of building from base to vane.	Character and order of illuminating apparatus.	Year lighted.	Remarks.
251	34 15	12 6	Square; wood Stone; round tower.....	30 15	1837 1815	The two lights in one lens over the bar.
252							

LAKE HURON.

253	150	25	Square tower	20	1847	Var'n in 1870, 0° 50' W.
254							
255	87	15	87	D., 3d ord.	1850	
256							
257	86	15	86	D., 3d ord.	1850	
258							
259	90	15	85	D., 3d ord.	1850	Var'n in 1870, 0° 50' W.
260							
261	130	12	85	D., 3d ord.	1850	
262							
263	86	10	85	D., 3d ord.	1850	
264							
265	21	6	1858	Var'n in 1870, 0° 30' W.
266							
267	61	8	60	D., 4th or .	1850	
268							

Interval of revolution
or flash.

Every 4 minutes.

Every 24 minutes.

LAKE HURON—Continued.

Number.	Height of light above sea level.	Distance visible in nautical miles.	Character of light-house or vessel.	Height in feet of building from base to vane.	Character and order of illuminating apparatus.	Year lighted.	Remarks.
299	56	16	Square wooden tower, painted white; on keeper's dwelling-house.	40	C.....	1870	Visible from all points of approach.
300							
301	195	20	Square tower, on white dwelling.	42	C.....	1870	
302							
303	60	10	20	C, 3d ord.	1866	At N. side of channel leading into Killarney Harbor.
304							
305	30	5	20	C, 3d ord.	1866	
306							
307	24 } 22 }	6		C, 3d ord.	1866	
308							
309	35	8		C, 3d ord.	1866	
310							
311							
312							

LAKE SUPERIOR.

313		8		C, 3d ord.	1866	
314							

NEW BRUNSWICK.

315	79	12	Wood; white; octagon...	74	1856	
316							

NEW BRUNSWICK—Continued.

Number.	Height of light above sea level.	Distance visible, in nautical miles.	Character of light-house or vessel.	Height, in feet, of building from base to vane.	Character and order of illuminating apparatus.	Year lighted.	Remarks.
317 318	52	11	White; wood.....	4*	C.....	1870	Attached in keeper's dwelling.
319	{ 27 31½ }	10	Buildings hexagonal and white.			1871	These beacons, kept in range, lead into the harbor. The outer exhibits a bright, the inner a red light.
320	32	12	Square wooden tower, painted white.	28	C.....	1872	
321 322	49	13	Square wooden tower, painted white.	33	C.....	1870	Seen from all points of approach.
323 324	55	13	Square; white; wood....	40	C.....	1870	
325 326							<i>Building.</i>
327 328							<i>Building.</i>
329 330	70	14	Wood; white.....	58		1841	Var'n in 1870, 23° 10' W.
331 332							<i>Building.</i>
333	70	14	White; wood; square tower.	50	D., 4th ord.	1864	
334	40	14	Wood; square; white ...	27	C.....	1872	To guide vessels into Shediac Harbor.
335 336	15	6	Lantern on a pole			1860	Lighted during the summer season.
337 338	72	14	Octagonal; white.....	40		1870	White dwelling 50 feet westward of light-house.

Interval of revolution or flash.

Rev. every 2 minutes, showing light every alternate half-min.

PRINCE EDWARD ISLAND.

Number.	Name.	Location.	Latitude.		Longitude.	Number of lights and relative positions.	Character of light.	Interval of revolution or flash.
			° N. "	' " W. "				
339 340	NORTH POINT.....	On point.....	47	3 46	63 59 19	1	F.	
341 342	CASCUMPEQUE, N. side ..	Sandy Island	46	48 22	64 2 15	1	F.	
343 344	RICHMOND HARBOR.....	Bill Hook, or Fishery Island, N. side entrance.	46	34 44	63 42 29	1	F.	
345 346	EAST POINT.....	200 yards in shore from S. part of point.	46	27 9	61 58 15	1	F.	
347 348	CARDIGAN BAY	Panmure Head, Georgetown Harbor, S. entrance.	46	8 47	62 27 40	1	F.	
349 350	GEORGETOWN	St. Andrew Point	46	9 57	62 30 15	1	F.	
351 352	HILLSBOROUGH BAY	Prim Point, 100 yards from the point, S.E. part of bay.	46	3 10	63 3 40	1	F.	
353 354	CHARLOTTE TOWN HAR- BOR.	Blockhouse Point, W. side of entrance.	46	13 55	63 7 28	1	F.	
355 356 357 358	BEDEQUE BAY.....	Salutation, or Seseow Head. . .	46	19 0	63 48 30	1	F.	
		Green's Wharf	46	23 32	63 47 5	1	F.	
359 360	PUGWASH HARBOR.....	Seaman's Point, E. side of entrance.	45	52 30	63 40 30	1	F.	

PRINCE EDWARD ISLAND.

Number.	Height of light above sea level.	Distance visible, in nautical miles.	Character of light-house or vessel.	Height, in feet, of building from base to vane.	Character and color of illuminating apparatus.	Year lighted.	Remarks.
330 340	80	14	1856	
341 342	82	8	Octagon tower; wood; white.	C.....	1856	Lighted during 8 months of the year. Var'n in 1870, 33° 40' W.
343 344	20	8	Tower.....	1856	Lighted during 8 months of the year.
345 346	130	18	Wood; octagon; white....	63	1867	
347 348	89	14	Wood; octagon; white....	49	C.....	1853	Lighted during 8 months of the year. The light should be kept open of Terns Point to clear reef off Bear Cape. In 1867 partially hidden by fir trees.
349 350	36	8	Red and white, striped vertical.	20	Lantern with coal-oil.	1868	
351 352	68	13	Brick; white; circular...	50	C.....	1845	Lighted during 8 months of the year. Several buoys mark the dangers in the bay.
353 354	35	16	On roof of block-house; white.	1856	Var'n in 1870, 22° 44' W.
355 356	80	14	1864	
357 358	15	7	Lantern on a pole.....	1856	
359 360	48	8	Square; wood; white....	44	C.....	1871	Showing RED seaward, and BRIGHT toward the harbor.

NOVA SCOTIA.

Interval of revolution or flash.	Number.	Height of light above sea level.	Distance visible, in nautical miles.	Character of light-house or vessel.	Height in feet of building from base to vane.	Character and order of illuminating apparatus.	Year lighted.	Remarks.
	361	44	12	Square; wood; white ...	32	C.....	1866	Visible round horizon.
	362							
every minute...	363	35	12	White; square	26	1878	
	364							
	365	65	11	Octagon; wood; striped red and white vertically.	55	1834	Lighted when the navigation is free from ice. A small RED light is seen below lantern, kept W. S.W. clears the E. reefs off Pictou Island. Var'n in 1870, 22° 40' W.
	366							
	367	52	12	Square; white			1853	
	368							
every 1/4 minute...	369	350	25	Square; white	39	D., 2d ord.	1861	
	370							
	371	50	10	White; square	23	1868	Visible between the bearings of W. (round by N.) and S. Var'n in 1870, 23° 40' W.
	372							
	373	110	18	Wood; square; white ...	35	1842	There is good anchorage under the light with the wind off shore.
	374							
	375	44	Square; white tower.....	24	1870	117 feet from extremity of point. Visible from N. entrance of Gut of Canso, and from south about 3 miles.
	376							
	377	54	10	Square; white tower			1854	RED light on N. side. BRIGHT light on S. side.
	378							
	379	218	21	Square; white tower.....			1854	To vessels in dangerous proximity to the island the light may become obscured by the abrupt cliffs on the sides of the island.
Flashes once in 1/2 minutes, and shows a flash every 45 sec's.	380	149	20	Wood; square; painted white, with black ball on seaward side.	24	C.....	1872	
	381	257	15	Square; white wooden tower.	40	D., 5th ord.	1871	
	382							

NOVA SCOTIA—Continued.

Number.	Name.	Location.	Latitude.		Longitude.		Number of lights, and relative positions.	Character of light.	Interval of revolution or flash.		
			N.	W.	°	'				°	'
283	Bird Island	Cilboix Island $\frac{1}{4}$ of a mile from N. end.	46	21	60	22	30	1	Rev.	Every minute.	
284											
285	Black Rock Point ..	S. side of entrance to Big Bras d'Or.	46	18	60	24	0	1	F.	
286											
287	Point of beach.....	N. side.....	46	17	60	32	15	1	F.	
288	Sydney.....	W. end of South Bar	46	12	60	12	40	1	F. red.	
289	Sydney.....	Flint Point, E. side of Spanish Bay.	46	16	60	7	22	1	F.	
290											
291	Flint Island	On island	46	11	59	45	50	1	Rev.	Every 15 seconds	
292											
293	Scatarl Island.....	N.E. point, on Trap Rock	46	2	59	40	18	1	Rev.	Visible a minute, eclipsed half a minute.	
294											
295	Scatarl Island.....	W. end	46	0	59	47	20	1	F. red.	
296											
297	Louisburg Harbor ..	N. side of entrance, 60 fathoms in shore of point.	45	54	59	57	15	1	F.	
298											
299	S. ENTRANCE CANOE GUT	Eddy or Sand Point.....	45	31	61	14	42	2	Horizontal, 8 yards apart.	F.
400											
401	GUYSBOROUGH HARBOR	W. side of entrance, near Pearl Point, Chebucto Bay.	45	22	61	29	11	1	F.	
402											

CAPE BRETON ISLAND—Continued.

NOVA SCOTIA—Continued.

Interval of revolution or flash.	Number.	Height of light above sea level.	Distance visible, in nau- tical miles.	Character of light, house or vessel.	Height, in feet, of duml- ing from base to vane.	Character and order of illuminating apparatus.	Year lighted.	Remarks.
Every minute.....	383	77	14	1863	Alternate RED and BRIGHT flashes.
.....	384							
.....	385	45	10	White; square.....	21	
.....	386							
.....	387	21	8	White.....	30	C.....	1871	Two lamps; one facing S.W., the other N.E. To show entrance to Narrows.
.....	388	36½	10	Wood; square; painted white.	20	C.....	1872	
.....	389	70	14	Octagonal; red and white, vertical.	51	1892	Var'n in 1870, 25° 55' W.
.....	390							
Every 15 seconds	391		2	Octagonal; white.....	43	1856	Visible round circle.
.....	392							
Visible a minute, eclipsed half a minute.	393	90	15	Octagonal; white.....	70	1839	The light should never be brought to bear to eastward of N. N.E., or to southward of S. S.W., nor approached nearer than 1½ miles. A gun is here for signals, also a boat to render assistance.
.....	394							
.....	395	90	9	Square; white wooden tower.	40	C.....	1871	Situated at Main-a-dieu.
.....	396							
.....	397	85	16	White, with a black ver- tical stripe.	35	1842	On keeper's dwelling. Var'n in 1870, 25° 10' W.
.....	398							
.....	399	25 each.	8	Wood; square; white, with a black diamond.	1851	
.....	400							
.....	401	30	8	Wood; square; white ...	20	1846	Var'n in 1870, 23° 25' W.
.....	402							

NOVA SCOTIA—Continued.

Interval of revolution or flash.	Number.	Height of light above sea level.	Distance visible, in nautical miles.	Character of light-house or vessel.	Height, in feet, of building from base to vane.	Character and order of illuminating apparatus.	Year lighted.	Remarks.
	403	70	14	Wood; square; white....	31		1865	Center of keeper's dwelling. Visible round horizon.
	404	39	11	Wood; square; painted white.	28	C.....	1872	
	405	31	8	Wood; square; white....			1851	
	406	42	12	Wood; square; painted white.	28	C.....	1872	
	407	75 & 40	15 & 9 &	Wood; octagon; striped red and white horizontally.	60		1815	A steam fog-whistle is situated 100 yards S. of light-house. Each blast will be 8 seconds' duration, with intervals of 51 seconds. Varn in 1870, 23° 30' W.
	408							
Every 20 seconds	409	55	11	White; pyramidal; octagonal lantern.	35		1851	Light not totally obscured during the eclipses. 10 seconds' duration flash and 10 seconds' eclipse.
Showing alternate flashes of red and white every 2 minutes.	410	61	15	Wood; square; painted white; roof of dwelling red.	28	C.....	1872	
Every 2 minutes	411	70	12	White, with two black bulls seaward, S, S.W.	35		1846	On house.
	412							
Every minute....	413	85	14	Wood; octagonal; black and white vertical stripes on seaward side.	53		1865	Alternately BR. HT and RED faces. Visible round horizon.
	414							
	415	45	8	Octagonal; dull red, with white belt.			1852	BR. HT RED to seaward. Pilots are stationed here.
	416							
	417	58	12	White; circular; roof red.	48		1815	When Sambro Light bears W, S.W., this light should not be brought to the westward of S., which clears the Thru Cup Shoal. Varn in 1870, 26° 25' W.
	418	132	18	Wood; square; painted white.	23	C.....	1872	
Revolves once in 2 minutes, and shows a flash every minute.	419	115	20	Octagon; white	60		1758	If a vessel fires a gun during a fog it will be answered by two from the island, and the same reply will be made to the sound of a steamer's whistle. Pilots resort here.
	420							

NOVA SCOTIA—Continued.

Number.	Name.	Location.	Latitude.		Longitude.	Number of lights and relative positions.	Character of light.	Interval of revolution or flash.
			N. ° ' "	W. ° ' "				
421	PEGGY'S POINT	E. side of entrance to St. Margaret's Bay.	41 26 30	63 54	—	1	F. red.	
422								
423	CHESTER or MADONE B. I.	East Ironbound Island, S.E. part, 200 feet from the shore.	44 26 22	64 4 50	—	1	F.	
424	MADONE BAY	On Hudson's Nose	44 24 56	64 13 46	—	1	F. red.	
425	MALAGASH or L'AN-ENBURG BAY.	Cross Island, E. point	44 18 43	64 9 57	—	2	Vertical, 11 yards apart. Upper Fl. Lower F.	Bright 45 seconds, eclipsed 15 seconds.
426		Battery Point	44 21 41	64 17 36	—	1	F.	
427								
428								
429	MOSHER	On island, S.E. part, W. side of entrance to Le Have River.	44 11	64 19	—	1	F. red.	
430								
431	WEST IRONBOUND ISLAND, S. side.	Mouth of Le Have River	44 13 43	64 16 19	—	1	Rev.	Every 30 seconds
432								
433	METWAY FORT	Metway Head, W. side of entrance.	44 6 10	64 32 14	—	1	F.	
434								
435	LIVERPOOL BAY	Coffin Island, S. point	44 1 58	64 37 34	—	1	Rev.	Bright 40 seconds, eclipsed 80 seconds.
436		Fort Point, S. entrance	44 3	64 42	—	1	F. red.	
437								
438								
439	LITTLE HOPE	Nearly on center of islet	43 48 31	64 47 15	—	1	Rev. red.	
440	PORT EBERT HARBOR	On Shingle Beach, E. side of harbor.	43 48 10	64 55 24	—	1	F. red.	

NOVA SCOTIA Continued.

Interval of revolution or flash.	Number.	Height of light above sea level.	Distance visible, in nau- tical miles.	Character of light-house or vessel.	Height, in feet, of build- ing from base to vane.	Character and order of illuminating apparatus.	Year lighted.	Remarks.
	421	65	14	White; square	26		1868	
	422							
	423	150	16	White; wood	46	C.	1866	Visible from all points of approach. Rebuilt.
	424	68	11	Square; wood; painted white.	23	C.	1872	
Bright 45 seconds, eclipsed 15 sec- onds.	425	{ 100 65	{ 14 8	Red; octagonal base.....	23		1832	Pilots resort here; and vessels might take refuge in case of necessity. Var'n in 1870, 19° 55' W.
	426							
	427		12	Square; white.....		C.	1864	On top of dwelling-house, which is white.
	428							
	429	55	12	Square; white	26		1868	
	430							
Every 30 seconds	431	72	13	Square tower; white.....	29		1855	Near the edge of a cliff 40 feet high.
	432							
	433	41	10	Square; white; with black square seaward.			1851	Like a dwelling-house.
	434							
Bright 40 seconds, eclipsed 80 sec- onds.	435	72	16	Octagon base; horizontal stripes, red and white, eight in number.	66		1812	Var'n in 1870, 18° 55' W.
	436							
	437	30	5	Square; white.....	17		1855	Left on port side when entering harbor.
	438							
	439	40	12	Square; white.....	31		1865	Center of keep'r's dwelling; visible round horizon.
	440	33	10	Square; wood; painted white.	29	C.	1872	

NOVA SCOTIA—Continued.

Interval of revolution or flash.	Number.	Height of light above sea level.	Distance visible, in nautical miles.	Character of light-house or vessel.	Height, in feet of building from base to vane.	Character and order of illuminating apparatus.	Year lighted.	Remarks.
	441	44	10	Square; white	39		1853	
	442	66	11	Square; wood; painted white.	29	C.	1872	
	443	{ 130 65	{ 18 10 }	Octagonal; vertical stripes, black and white.	77		1788 Repaired 1858	Var'n in 1870, 18° 5' W.
Alternate red and white flashes every minute.	444	48	12	Square; wood; painted white.	29	C.	1872	
	445	49	12	Square; white, with black ball seaward.	35		1850	
	446							
Bright 15 seconds, eclipsed 35 seconds.	447	53	12	White; conical	50	D.	1861	Var'n in 1870, 17° 25' W.
	448							
	449		12	Wood; white		C.	1864	Visible seaward. Each end of a dwelling-house white.
	450							
	451	28	8	Square; white	27		1854	Open westward of St. John's Island; bearing N.E. by N. clears the ledge. Making harbor from any other direction, the light must be brought to the northward of E. N.E. before it can be steered for, to avoid shoal spot off C. St. Ann Point.
	452							
	453	58	18	Octagon; white	59		1830	The Bloude Rock lies 8 by W. 3½ miles from light-house. A steam-whistle is sounded, during fogs and snow-storms, in blasts of 5 seconds' duration, with intervals of 5 seconds and 45 seconds, alternately. May be heard from 5 to 25 miles, according to weather. Var'n in 1870, 16° 40' W.
	454							
Every minute and 45 seconds, dark 30 seconds.	455	117	20	Octagon; vertical stripes, red and white.	59		1839	Fog-whistle on W. side sounded in fogs or snow-storms 10 seconds in every minute, with an interval of 50 seconds. May be heard from 5 to 7 miles, according to wind and weather. Cannot be at all times relied on.
	456							
Every 30 seconds.	457	100	13	Octagonal; white	46		1868	RED and BRIGHT.
	458							

NOVA SCOTIA—Continued.

Number.	Name.	Location.	Latitude.		Longitude.		Number of lights and relative positions.	Character of light.	Interval of revolution or flash.			
			N. ° ' "	W. ° ' "	° ' "	° ' "						
459	Bryer Island	N.W. point	44	14	57	66	23	33	1	F.
460		
461	Peter Island	S. entrance to Grand Passage.	44	15	30	66	20	20	2	Horizontal...	F.
462	
463	Petit Passage, N. entrance.	Bonr's Head, 50 feet from edge of cliff.	44	24	16	66	13	0	1	Rev.	Alternate red and white flashes every minute.
464			
465	Sissiboo River.....	Near Weymouth.....	44	26	30	66	1	15	1	F.
466	
467	Digby, or Annapolis	Prim Point, S. point of entrance	44	41	34	65	47	8	1	F.
468	Southwestern Wolf Island.	Southeastern point of island ..	44	56	50	66	41	10	1	Rev.	An interval of 1½ minutes between each flash.
469			Marshall Cove, or Port Williams.	44	56	52	65	16	1	2	
470	Bliss Island	W. point of island	45	1	15	66	51	0	1	F. red.
471	Margaretville	45	2	57	65	4	0	2	F.
472	
473	Black Rock Point.	S. shore	45	10	10	64	46	0	1	F.
474	
475	Horton.....	On bluff	45	6	15	64	13	10	1	F.
476	
477	Burn Coat Head ...	Basin of mines	45	18	17	63	48	30	1	F.
478	

BAY OF FUND.—Continued.

NOVA SCOTIA—Continued.

Number.	Height of light above sea level.	Distance visible, in nautical miles.	Character of light-house or vessel.	Height, in feet, of building from base to vane.	Character and order of illuminating apparatus.	Year lighted.	Remarks.
459 460	72	13	Octagonal; white	55		1809	Var'n in 1870, 172° 45' W.
461 462	40 each.	10	Square; white			1850	Visible from the northward between the bearings of S. by W. and S. S.W., and from the southward between the bearings of N.E. by E. and N. N.W. $\frac{1}{4}$ W.
463						1864	On the top of a dwelling-house, which is white. Visible from E. by S. to S.W. by W.
464 465 466	30	8	Square, pyramidal; painted white.	33	C.	1870	Visible from all points of approach.
467	76	13	Square; vertical stripes	22		1817	Var'n in 1870, 189° 45' W. During thick weather, fogs, and snow-storms, a steam fog-whistle will be sounded 8 seconds in each minute, thus making an interval of 52 seconds between each blast. The whistle has been heard at the following distances: In calm weather, over 15 miles; with the wind, about 20 miles; stormy weather and against the wind, 6 miles.
468	111	17 to 20	Square wooden building, painted white	55	C.	1871	Visible from all points of approach.
469	{ 60 } { 57 }	5	Square; white	22		1859	Visible between the bearings of W. S.W. and E. N.E. (round by N.) At the distance of about 5 miles it will show a BRIGHT light, and on a nearer approach GREEN.
470	45	12	Square wooden tower, painted white.	50	C.	1871	Visible from all points of approach seaward.
471	{ 30 } { 27 }	5	Square; white	22		1859	Visible between the bearings of W. S.W. and E. N.E. (round by N.) At the distance of about 5 miles it will show a BRIGHT light, and on a nearer approach RED.
472							
473 474	45	12	Square; white	35		1848	
475 476	92	20	Square; white	20		1851	Var'n in 1870, 209° 40' W.
477 478	75	13	Square; white	50		1859	On keeper's dwelling. Visible from all points of approach.

Interval of revolution or flash.

Alternate red and white flashes every minute.

Interval of 1 1/2 minutes between each flash.

NOVA SCOTIA—Continued.

Number.	Name.	Location.	Latitude.	Longitude.	Number of lights and relative positions.	Character of light.	Interval of revolution or flash.
479	BAY OF FUNDY.—Continued.	Cobequid Bay.....	Spencer Point, N. shore.....	N. "	W. "	1	F.
480							
481		Partridge Island or Parsborough.	W. side of river	45 23 —	64 19 0	1	F.
482							
483		Apple River, Chignecto Bay.	Cape Curstan or Hetty Point, N. entrance.	45 28 —	64 51 30	1	F.
484							

NEW BRUNSWICK.

485	BAY OF FUNDY.	Grindstone	W. part of island	45 43 13	64 37 25	1	F.		
486									
487		Enragé.....	Pitch of cape.....	45 35 31	61 46 55	1	F.		
488									
489		Quaco.....	Small rock off head.....	45 19 20	65 31 55	1	Rev.	Every 50 seconds.	
490									
491			St. John's Harbor.	Partridge Island.....	45 14 —	66 3 5	1	F.	
492									
493				Bacon Tower, S. extreme of spit.	45 15 3	66 3 5	1	F.	
494									
495	Lepreau.....	On point.....	45 3 31	66 27 39	2	Vertical, 9 yards apart.	F.		
496									

NOVA SCOTIA—Continued.

Interval of revolution or flash.	Number.	Height of light above sea level.	Distance visible, in nautical miles.	Character of light-house or vessel.	Height, in feet, of building from base to vane.	Character and order of illuminating apparatus.	Year lighted.	Remarks.
	450			Window in a building.....			1863	
	481	37	9	Octagon; white.....	32		1852	
	482							
	483		12	Tower; white.....	24			
	484							

NEW BRUNSWICK.

	485	60	12	Wood; octagonal; white.....			1850	Visible from N.E. by E. (round by N.) to E. by S., or 315° Cape Enragé Light-house S.W. by W. $\frac{1}{4}$ W. about 10 miles. Var'n in 1870, 21° 10' W.
	486							
	487	120	15	Square; white.....	33		1840	Visible between the bearings of N.W. and N.E. (round by S.)
	488							
Every 20 seconds.	489	38	15	Octagon; horizontal bands, red and white.	46		1835	
	490							
	491	119	20	Octagon; vertical stripes, red and white.	40		1791	In foggy weather a steam-whistle is sounded every minute for 10 seconds. A bell buoy is established near the E. side of Partridge Reef.
	492							
	493	35	12	Octagon; vertical stripes, red and white.	15	D.....	1828 relighted 1808	Leading light for the spit. Var'n in 1870, 19° 25' W.
	494							
	495	{ 81 53 }	15	Octagon; striped horizontally, red and white.	31		1831	Visible from southward between the bearings of W. N.W. and E. by N. A steam-whistle is sounded, during fogs and snow-storms, in blasts of 5 seconds' duration, with intervals of 5 seconds and 45 seconds, alternately. May be heard from 3 to 20 miles, according to the weather. Var'n in 1869, 18° 10' W.
	496							

NEW BRUNSWICK—Continued.

Interval of revolution or flash.	Number.	Height of light above sea level.	Distance visible, in nautical miles.	Character of light-house or vessel.	Height, in feet, of building from base to vane.	Character and order of illuminating apparatus.	Year lighted.	Remarks.
	497	64	15	Octagon; white, with red cross.	34		1829	Var'n in 1870, 18° W.
	498							
	499	42	10	Octagon; white.	22		1831	Visible between the bearings of N.W. by N. and S.E. by S.
	500							
	501	118	17	Octagon; wood; white.	50	C.	1860	Visible between the bearings of S.W. and N.W. (round by S.) Var'n in 1870, 17° 30' W.
	502							
	503	E. 58 (W. 54)	15	{ White; octagon { White.	58 36	D., 3d ord.	{ 1870 { 1832	{ A gun is fired every four hours during a fog. Vessels standing to the northward should haul off the moment the lights are in one to avoid the Murr Ledges.
	504							
Every minute....	505	66	12	Octagon; striped vertically, black and white alternately.	41	D., 4th ord.	1831	A gun is fired to answer signals during a fog. Dangerous rocks extend 4 miles eastward of the light-house. Fixed light..... 45 seconds. Eclipse..... 54 " Flash..... 44 " Eclipse..... 54 " <u>60</u>
	506							
BERMUDA ISLANDS.								
Every 51 seconds.	507	362	24	Circular; iron; white.	106		1846	Visible from all directions except between the bearings of S. 48° W. and S. 52° W., also S. 53° W. to S. 62° W., being interrupted by high land. Var'n in 1870, 7° 16' W.
	508							
BAHAMIA ISLANDS.								
Every minute and a half.	509	80	12	Conical tower; upper part red, lower white; lantern white.	70	C., 2d ord.	1836	Seen except when it bears between S. by W. 4 W. and S. 4 E., being intercepted by the Demini Isles when 8 miles distant. Var'n in 1870, 4° 10' E. An indifferent light.
	510							

BAHAMAS ISLANDS—Continued.

Interval of revolution or flash.	Number.	Height of light above sea level.	Distance visible inautical miles.	Character of light-house or vessel.	Height, in feet, of building from base to vane.	Character and order of illuminating apparatus.	Year lighted.	Remarks.
Every $\frac{1}{2}$ minute.	511	158	16	Iron, with broad red bands, 8 in number; and white, 7 in number, horizontal bands; lantern white.	145	C, 1st ord.	1859	Shows a fixed light, for a distance of 6 miles, between the flashes.
	512							
	513	81	12	Circular; 5 bands, red and white alternately.	46	D, 3d ord.	1863	Visible between the bearings of N.W. by N. and N.E., or 58°.
	514							
	515	68	10	Conical stone tower; white.	58	C, 1st ord.	1816	Visible between the bearings of N.E. and N.W. through N. Var'n in 1870, 32° 30' E. The regulation is still in force which requires the exhibition at night of a red light at Hog Island Light-house whenever the state of the bar at the entrance to Nassau is such as to be considered impassible or dangerous to vessels entering the harbor.
	516							
	517	50	9	On cupola of house.				Visible only between N. N.W. $\frac{1}{2}$ W. and W. $\frac{1}{2}$ N.
	518							
Every minute.	519	160	16	Conical stone tower; white lower part and red upper part; lantern white.	85	C, 1st ord.	1836	Visible between the bearings of S.W. and E. S.E. through E.
	520							
	521	123	14	Circular; stone	77	D, 1st ord.	1863	Illuminates 22° of the horizon.
	522							
	523							<i>Proposed.</i>
	524							
	525	133	17	Conical; 3 bands of red brick.	114	D, 2d ord.	1868	Illuminates 33°.
	526							
Every minute	527	120	17	Conical, stone tower; whitish.	114	D, 2d ord.	Visible about 1 mile southward of Mathew Town over the land. Var'n in 1870, 3° E.
	528							

BAHAMA ISLANDS—Continued.

Interval of revolution or flash.	Number.	Height of light above sea level.	Distance visible, in nautical miles.	Character of night-house or vessel.	Height, in feet, of building from base to vane.	Character and order of illuminating apparatus.	Year lighted.	Remarks.
A flash every half minute.	529	108	15	White; iron; circular....	60	C.....	1845	Var'n in 1870, 2° 25' E.
	530							
	531	146	16	Circular, iron; broad red bands, 7 in number, and white, 6 in number; lantern white.	150	D., 1st ord.	1860	Visible round horizon.
	532							
	533		8			D., 1th ord.		<i>Proposed.</i>
	534							
	535	96	8	Stone, conical tower; white and red upper part.	58		1830	Visible round horizon, except when it bears S.W. 1/4 W., being intercepted by water cays when 3 leagues distant. Var'n in 1870, 4° 25' E.
	536							
GREAT ANTILLES.								
Half a minute	537	117	20		167	D., 2d ord.	1863	"Roncall" thereon. Var'n in 1870, 6° E.
	538							
	539					D., 2d ord.		<i>Proposed.</i>
	540							
	541	110	15			D., 3d ord.		<i>Proposed.</i> Var'n in 1870, 5° 38' E.
	542							
A flash every half minute.	543	170	21	Stone cubic.....	73	D., 1st ord.	1845	"O'Donnell" thereon. The light is extinguished for ten minutes after midnight to clean and trim the lamps. Var'n in 1870, 5° 30' E.
	544							
	545							
	546							
Every minute	547	93				D., 3d ord.		<i>Proposed.</i>
	548							

GREAT ANTILLES—Continued.

Number	Name.	Location.	Latitude.		Longitude.	Number of lights and relative positions.	Character of light.	Interval of revolution or flash.
			N. ° ' "	W. ° ' "				
549	Cardenas Bay (Spa.)	Piedras Cay, Los Pinzones.....	23 14 24	81 6 32	1	F. & Fl.	A red flash every half minute.	
550		Cay Diana.....	23 9 56	81 6 10	1	F.		
551								
552								
553	Cayo Cruz del Padre (Spa.)	On reef, $\frac{1}{2}$ of a mile N.E. of cay.	23 17 —	80 53 29	1	F.		
554								
555	Bahia de Urdiz (Spa.)	N.E. part of cay.....	23 12 34	80 58 35	1	F. & Fl.	Every minute....	
556	Sagua la Grande....	Rancheria Point.....	23 5 2	80 4 0	1	F.		
557	Parson Cay Grande (Spa.)	N. part of cay.....	22 29 3	78 9 10	1	F. & Fl.	A flash every minute.	
558								
559	Nuevitas Harbor (Spa.)	Empovento or Pilots' Point, E. entrance.	21 37 30	77 4 33	1	F.		
560		Maternillos Point.....	21 40 6	77 8 14	1	Rev.	Every minute....	
561								
562								
563	Lucrecia (Spa.)....	On point.....	21 4 38	75 37 11	1	Rev. red.	Every minute....	
564								
565	Barnes (Spa.)....	Entrance of port.....	20 21 40	74 29 37	1	F.		
566								
567	Cape Maysi (Spa.)...	On cape, E. point of island....	20 15 10	74 9 41	1	F.		
568								

CUBA, North Coast—Continued.

GREAT ANTILLES—Continued.

Interval of revolution of flash.	Number.	Height of light above sea level, in feet.	Distance visible, in nautical miles.	Character of light-house or vessel.	Height, in feet, building from base to vane.	Character and order of illuminating apparatus.	Year lighted.	Remarks.
A red flash every half minute.	549	74	15	Tower on house; white.	67	D., 4th ord.	1857	
	550							
	551	41	7	Iron column			1862	Var'n in 1870, 4° 53' E.
	552							
	553	49	10	Coneal; white.	46	D., 4th ord.	1862	
	554							
Every minute.	555	175	24	Iron; white.	159	D., 1st ord.	1862	
	556	57	8½	Red pole	46	D.	1872	The pole is in the center of the keeper's dwelling, which is of brick. Visible between S.W. ¼ W., round by N., to S.E. ¼ E.
A flash every minute.	557	150 {	Fl. 20	Iron; brown; base stone.	127	D., 1st ord.	1859	Var'n in 1870, 4° 10' E.
	558	P. 14						
	559	49	9	On white mast from center of building.	44	D., 6th ord.	1864	Keeper's dwelling is quadrangular, yellow.
	560							
Every minute.	561	173	23	White	170	D., 1st ord.	1866	Color thereon. Duration of eclipse, 16 seconds.
	562							
Every minute.	563	130	17	Stone; white		D., 2d ord.	1868	Var'n in 1870, 3° 40' E.
	564							
	565	48	12	Iron column		D., 4th ord.	1870	To facilitate entrance by night. Column attached to keeper's dwelling.
	566							
	567	128	17	Tower circular; base octagonal.		D., 2d ord.	1862	
	568							

GREAT ANTILLES—Continued.

Number.	Name.	Location.	Latitude.		Longitude.		Number of lights and relative positions.	Character of light.	Interval of revolution or flash.		
			N.	W.	°	'				°	'
569	St. Jago de Cuba (Spa.)	100 yards E. of the Morro Castle.	19	57	42	75	53	35	1	Rev.	Every 2 minutes
570											
571	Cruz (Spa.)	On cape.	19	48	21	77	44	40	1	F.	A red flash every 3 minutes.
572											
573	Jagua, Xagua, or Clemfuegos Harbor (Spa.)	Colorada Point. E. point of entrance.	22	1	0	80	30	30	1	F. & Fl.	
574											
575	Cochinos Bay (Spa.)	Cay Piedras, N. part.	21	58	0	81	4	47	1	F.	
576											
577	Batabano (Spa.)		22	41	25	82	18	21	1	F.	
578											
579	Pepe, Isle of Pines (Spa.)	On cape	21	26	—	83	6	—	1	Rev.	
580											
581		Morant Point	17	56	0	76	11	40	1	Rev.	Every minute
582											
583	JAMAICA ISLAND (E.).	Blum Point, 66 yards northward of point.	17	55	45	76	47	0	1	F.	
584											
585		Fort Augusta	17	58	—	76	51	0	1	F.	
586											

CUBA, South Coast.

GREAT ANTILLES—Continued.

Interval of revolution or flash.	Number.	Height of light above sea level.	Distance visible, in nau- tical miles.	Character of light, house or vessel.	Height, in feet, of build- ing from base to vane.	Character and order of illuminating apparatus.	Year lighted.	Remarks.
2 minutes	569	223	15	White; iron.....	30	D, 3d ord.	1861	Var'n in 1870, 1° 6' E.
	570							
flash every minutes.	571	115	18	Stone tower on focal plane.		C, 2d ord.	1871	Vessels passing the light from E. to W. or from W to E. should keep well off until passed, to avoid the reef.
	572							
	573	81	14	45	D, 2d ord.	1851	"Villa Nueva" thereon. Var'n in 1850, 5° 18' E.
	574							
	575	30	7	Brown.....	26	D, 1th ord.	1863	Over keeper's dwelling.
	576							
	577	31	3	Lantern on mast.....			1854	
	578							
	579		16		D, 2d ord.		Proposed. Var'n in 1870, 5° 40' E.
	580							
minute...	581	115	15	White iron tower.....	96		1842	Var'n in 1870, 4° 50' E.
	582							
	583	68	12	White.....			1854	RED when seen between the bearings of N.W. by W, $\frac{1}{2}$ W, and N. $\frac{1}{4}$ E. BRIGHT from N. $\frac{1}{4}$ E. to S.E. (round by E.)
	584							
	585	40		Single lamp suspended from the beacon.				BRIGHT and RED light. The BRIGHT light visible to the S. and W., and the RED to the eastward. Bearing N. by E. leads through the S. channel. Var'n in 1870, 4° 50' E.
	586							

GREAT ANTILLES—Continued.

Number.	Height of light above sea level.	Distance visible in actual miles.	Character of light-house or vessel.	Height, in feet, of building from base to vane.	Character and order of illuminating apparatus.	Year lighted.	Remarks.
587	234	6	On a mast	16		1861	<i>Discontinued.</i> Var'n in 1870, 22° 25' E.
588							
589	113	9	Cupola, white	100		1853	
590							
591		12				1866	Indicates the position of the bay at night.
592							
593		12				1866	Intended to indicate the position of the bay at night.
594							
595	80	9				1864	<i>Discontinued.</i>
596							
597		10				1866	
598							
599	171	15		D, 30 ord.		1846	Only 5 seconds bright; eclipse 112 seconds. Var'n in 1870, 17° 40' E.
600							

VIRGIN AND CARIBBEE ISLANDS.

601	115	12	White			1872	Visible from E. by S. through S. to W.
602							
603		4				1857	Var'n in 1870, 17° 30' E.
604							
605						1855	
606							

VIRGIN AND CARIBBEE ISLANDS—Continued.

Number.	Height of light above sea level.	Distance visible, in nautical miles.	Character of light, lens or glass.	Height, in feet, of building from base to vane.	Character and order of illuminating apparatus.	Year lighted.	Remarks.
607	150	20	Red, of en iron frame-work	132	D., 2d ord.	1868	Var'n in 1870, 0° 40' E.
608							
609	37	12	Wooden frame	33		1846	N. by W, $\frac{1}{2}$ W, leads to the anchorage.
610							
611							For mail steamer, when expected. Var'n in 1870, 1° E.
612							
613	62	8		42		1843	<i>Temporary.</i> For mail steamer, when expected. The upper light 614. Var'n in 1870, 0° 30' E.
614							
615	108	15		75	D., 3d ord.		The Balchae Rock lies S, 12° W, $\frac{1}{2}$ a mile. Var'n in 1870, 1° E.
616							
617		7					
618							
619			Lantern				
620							
621			Lantern				
622							
623		7				1858	
624							
625		2				1865	Light at end of what also is R.D. but is elevation.
626							
627		9				1867	
628							

VIRGIN AND CARIBBEE ISLANDS—Continued.

Number.	Height of light above sea level.	Distance visible, in nautical miles.	Character of light-house or vessel.	Height, in feet, of building from base to vane.	Character and order of illuminating apparatus.	Year lighted.	Remarks.
629			On flag-staff			1867	When mail steamer is expected.
630							
631	62	11	Red mast	15		1855	
632							
633	131	6					RED light from W. N.W. to W. S.W. BRIGHT in other directions.
634							
635		5				1860	
636							
637		5				1860	ORANGE to the N., BLUE to the W., and GREEN to the S. The BRIGHT and BLUE lights in line lead to the anchorage.
638							
639		2				1860	Lighted on the day the mail is expected, and for three nights after, if not arrived.
640							
641	410	24	White tower		D, 1st ord.	1862	Var'n in 1:50, 1° 15' E.
642							
643	80	3				1843	For mail steamer, when expected. Var'n in 1870, 1° 30' E.
644							
645			Red perch			1868	When mail steamers are expected.
646							
647			Perch			1868	Shown from the day the mail is due until it arrives.
648							

VIRGIN AND CARIBBEE ISLANDS—Continued.

Number.	Height of light above sea level.	Distance visible, in nautical miles.	Character of light-house or vessel.	Height, in feet, of building from base to vane.	Character and order of illuminating apparatus.	Year lighted.	Remarks.
649	640	6				1858	For mail steamer, when expected.
650							
651					D, 1st ord.		<i>Proposed.</i>
652							
653	145	18	Alternate red and white bands.	90		1852	Does not show until it bears to the westward of S.W. by W., and to be kept well open in order to clear the Cobbler Reef, Var'n in 1870, 12° 57' E.
654							
655	34	Br ^t , 8 Red, 3				1850	RED to N. of E., and BRIGHT to S. of E.
656							

MEXICO AND CENTRAL AMERICA.

657	15					New 1865	
658							
659	80	15	White	60			Var'n in 1870, 82° 20' E.
660	102	15	Tower, pointed blue, with white stripes at the upper part.		4th ord.	1872	
661	126	12				1860 Imp'd 1869	Var'n in 1870, 69° 49' E.
662							
663	100	14	Circular; white lantern; red and white upper part.		D, 2d ord.	1856	
664							
665	95	14					1861
666							
667	60	10		50		1852	Var'n in 1870, 72° 35' E.
668							

MEXICO AND CENTRAL AMERICA—Continued.

Interval of revolution or dash.	Number.	Height of light above sea level.	Distance visible, in nautical miles.	Character of light-house or vessel.	Height, in feet, of building from base to vane.	Character and order of illuminating apparatus.	Year lighted.	Remarks.
	649	31 49	13	Skeleton; iron; upper third black; remainder white.	57	D., 4th ord.	1840 New 1868	The bank extends 14 miles to the N.E. of the light-house. The lights can be seen above the trees from all points of the compass, but the light-house is seen from seaward only from N.E. to S.W. by W.
	650							
	671	95 75	3			D., 6th ord.	1846	Var'n in 1870, 7° E.
	672							
	673					D., 6th ord.	1863	Holsted on flag-staff.
	674							
	675	53	6	Flag-staff, with a yard, on which the lights are displayed.	75	D.	1868	One major, the other red.
	676							
	677	88	18	Iron tower; white.	About 100	C., 3d ord.	1821	Visible round horizon.
	678							
	679	30	11					Seventy yards from the shore. Var'n in 1850, 24° E.

NEW GRENADA, VENEZUELA, AND GUYANA.

	681	60	10	Wood; open white building	60	D., 5th ord.	1852	Var'n in 1870, 0° 45' E.
	682							
	683	328	24				1870	
	684	58	10	White tower			1872	Temporary guide to the anchorage. Var'n in 1872, 4° 50' E.
	685	60	6				1857	
	686							
	687	30	6	Stone tower				Building.
	688							

NEW GRENADA, ETC.—Continued.

Number.	Name.	Location.	Latitude.		Longitude.	Number of lights and relative positions.	Character of light.	Interval of revolution or flash.	
			N. ° ' "	W. ° ' "					
689 690	GRAN CURAÇAO ISLAND (Du.)	St. Ann Harbor, Rif Fort	12	6 10	68 53 10	1	F.		
691 692	LITTLE CURAÇAO (Du.)	On E. side of island	11	58 0	68 38 0	1	F.		
693 694	BUEN AYRE (Du.)	Laete (S. point)	12	2 12	68 17 0	1	F.		
695 696 697 698	PUERTO CABELLO	Brava Point	10	30 0	68 0 0	1	Rev.	Red and bright flashes every 40 seconds.	
699 700 701 702	TRINIDAD (E.)	Port Espana, on jetty	10	38 40	61 31 0	1	F.		
		Leicos Point	10	3 30	61 55 40	1	F.		
703 704 705 706		TORLIGO (E.)	Scarborough, or Buccolet Point	11	10 0	60 42 —	1	F.	
707 708 709 710		DEMERARA (E.)	On E. side of entrance	6	49 30	58 11 30	1	Rev.	Every minute.
	Light-vessel, in 3 fathoms, N.E. ½ N., about 10 miles from entrance of river.		6	57 15	58 6 50	1	F.		

NEW GRENADA, ETC.—Continued.

Number.	Height of light above sea level.	Distance visible, in nautical miles.	Character of light-house or vessel.	Height, in feet, of building from base to vane.	Character and order of illuminating apparatus.	Year lighted.	Remarks.
689						1850	
690							
691	40	10			C, 2d ord.	1850	
692							
693	85	12	White, with vertical red stripes.	75	C, 2d ord.	
694							
695	70	11	Quadrangular			1861	Var'n in 1870, 3° 40' E.
696							
697							
698							
699	50	15	Hexagonal tower	43	D, 4th ord.	1841	Visible between the bearings of N. E. by N. and E. E. round by W. Var'n in 1870, 2° E.
700							
701	29	5					Lantern hoisted on a white spar. Va
702							
703	115	12	Pentagon tower; red and white.	46	1842	Visible between the bearings of E. N. by S. Var'n in 1870, 2° 18' E.
704							
705							
706							
707	103	16	Octagonal tower; red and white vertical.	100	D, 4th ord.	1829	Var'n in 1870, 2° E.
708							
709	30	10	Red, with one mast about 60 feet high, and a blue flag by day.			1844	Pilot for Demerara and Essequibo Rivers are on board. "DEMERARA" on her sides.
710							

Interval of revolution
or flash.RED and WHITE
flashes every 40
seconds.

every minute....

NEW GRENADA, ETC.—Continued.

Interval of revolution or flash.	Number.	Height of light above sea level.	Distance visible, in nautical miles.	Character of light-house or vessel.	Height, in feet, of building from base to vane.	Character and order of illuminating apparatus.	Year lighted.	Remarks.
	711		10	A ball on the Foremast; roofed over, with a jigger-mast aft.			1850	The light bearing S. S. W., in 4 fathoms, is the fairway into the harbor. A ship pilot boat cruises outside the bar constantly, carrying a white flag with PILOT inscribed thereon.
	712							
	713	30	7	Red ball at mast-head.			1858	"SURIAM" on the vessel's sides. Var'n in 1870, 17 3/4 E.
	714	75	12	Wooden tower.	70	D.	1871	To enter the Maroni River by day, keep the outer buoy and the Dutch light-house on the W. side of entrance in a line, and, on reaching the inner buoy, steer for Point Panato. The Dutch light shows only over a sector of 90°; that is, 45° each side of S. 38° W.
	714 1/2	75	13	White wooden tower.		D.	1871	
	715	200	18			C.	1864	A rock of 12 feet lies 2,078 yards N. by W. 1/4 W. from light-house.
	716							
	717	61	9	Iron piles; quadrangular.		C.	1864	Var'n in 1870, 6° 20' W.
	718							
	719	69	8			C.	1850	GREEN light. These two lights in one lead over the <i>Atollé Rock</i> , which is avoided by passing W. of this line.
	720							
	721	130	10	Wooden frame.	40	C.	1862	
	722							
	723	39				C.	1862	
	724							

BRAZIL.

Every 5 minutes; eclipsed every 5 seconds.	725	30		Iron; one mast.		C.	1868	Ships coming from the eastward should, as soon as the light-vessel bears W., steer for her, and, passing N., steer S. W., as soon as they have rounded her.
	726							
Every 2 minutes	727		17				1852	Var'n in 1870 37° W.
	728							

BRAZIL.—Continued.

Interval of revolution or flash.	Number.	Height of light above sea level.	Distance visible in nautical miles.	Character of light-house or vessel.	Height in feet of lighting from base to vane.	Character and order of illuminating apparatus.	Year lighted.	Remarks.
Every 14 minutes for 48 seconds.	729	147	15	Square.....	75		Re-established 1868	BRIGHT and RED, alternately. Var'n in 1870, 4° 40' W.
	730							
	731						1860	A guide to the anchorage before Alcantara.
	732							
Every 32 seconds	733		11			D., 1st ord.	1829	
	734							
	735	70	14	Square; white.....	80		1861	
	736							
	737	85	12		50	, 4th ord.	1872	
	738							
	739	30					1868	
	740							
	741	43	12	Round tower.....		C., 3d ord.	1860	
	742							
Every minute.	743		15				1824	Twice BRIGHT and once a RED light in succession showing a light every minute. Var'n in 1870, 10° W.
	744							
A flash every 2 minutes.	745	308	22				1856	Fixed light 70 seconds, eclipse 16 seconds, flash 12 seconds, eclipse 32 seconds.
	746							
	747	69	11				1867	Var'n in 1870, 8° 45' W
	748							

BRAZIL—Continued.

Number.	Name.	Location.	Latitude.		Longitude.		Number of lights and relative positions.	Character of light.	Interval of revolution or day.
			S.	N.	W.	E.			
749	COFINDEA BAR	Watch tower	10	59 30	37	2 30	1	F.	
750									
751	BAHIA or SAN SALVA- DOR (B.)	Fort San Antonio	11	0 55	38 31 35	1	Rev.	Every 80 seconds	
752									
753		Fort San Marcello	12	58 16	38 30 44	1	F. red.		
754									
755	MORRO DE SAN PAULO (B.)	On Morro	15	22 35	38 54 14	1	Rev.	Every minute	
756									
757	ARROLDOS ISLES (B.)	Santa Barbara Island, highest point.	17	57 42	38 41 30	1	Fl.	Every minute	
758	ESPIRITO SANTO BAY	On hill of Santa Luzia				1	F.		
759	FRIO CAPE ISLAND (B.)	Focinho do Cabo Point	23	0 42	41 59 36	1	Fl.	Every minute and a half.	
760									
761	RAZA (B.)	On island	23	3 0	43 8 26	1	Rev.	Every 2½ minutes	
762									
763	RIO DE JANEIRO (B.)	Fort Santa Cruz, E. entrance	22	56 36	43 8 —	1	F.		
764									
765		Callabouco Point				1	F.		
766									
767	SANTOS (B.)	Mocha Island	24	3 6	46 15 3	1	F.		
768									
769	PARANAGUA BAY	Island	25	32 58	48 19 0	1	F.		
770	do Mel (B.)	On summit of Morro das Gen- chas, on N.E. part of islet.							

BRAZIL.—Continued.

Interval of revolution or flash.	Number.	Height of light above sea level.	Distance visible, in navi- gational miles.	Character of light-house or vessel.	Height, in feet, of build- ing from base to vane.	Character and order of illuminating apparatus.	Year lighted.	Remarks.
	719	115	6 to 9				1862	BRIGHT to S. E., RED eastward, GREEN southward. Vessels should anchor with RED light in sight in 4 fathoms; with BRIGHT or GREEN light in sight, do not go into less than 5 fathoms.
	720							
Every 80 seconds.	721	140	18				1823	Twice BRIGHT and once a RED light succeed each other, showing a light every 80 seconds.
	722							
	723						1864	
	724							
Every minute	725	256	20	White	80		1854	Eclipse not total within 8 miles.
	726							
Every minute	727	189	17	Iron; circular	51	D., 1st ord.	1861	Var'n in 1870, 59° 35' W.
	728	66	12	Tower		D., 4th ord.	1871	
Every minute and a half.	729	522	25	Circular; light stone color	53	C., 1st ord.	1861	Visible between S. W. and E., or 925°. Duration of the total eclipse is 45 seconds.
	730							
Every 2½ minutes	731	315	10 to 14	White; square	50		1828	BRIGHT and RED alternately.
	732							
	733		6				1830	Position of Fort Villegagnon, lat. 22° 54' 42" S., long. 43° 5' 0" W. of Greenwich. Var'n in 1870, 23° 24' W.
	734							
	735			Lantern on a pole			1856	RED light exhibited occasionally when steamers are plying.
	736							
	737	384	21	White	40	D., 1st ord.	1831	
	738							
	739	262	20	Iron tower	72		1872	
	740							

BRAZIL.—Continued.

Interval of revolution or flash.	Number.	Height of light above sea level.	Distance visible, in nauti- cal miles.	Character of light-house or vessel.	Height in feet of build- ing from base to vane.	Character and order of illuminating apparatus.	Year lighted.	Remarks.
Every minute.....	771	149	18	Circular.....		C, 5d ord.	1861	
	772							
Every 2 minutes	773	96	11		C, 2d ord.	1833	Bright 70 seconds, eclipsed 50 seconds. Var'n in 1870, 6° 30' E.
	774							
	775						1860	
	776							
	777						1860	
	778							
	779						1860	
	780							
	781						1860	
	782							
	783						1860	
	784							
	785						1860	
	786							

BUENOS AYRES, ETC.

Every minute.....	786	130	16	Octagonal tower.....		, 1st ord.	1872	Proposed.
	787	152	20	90	D.....	1860	To be removed to its former position on Lobos Island. Var'n in 1870, 4° 10' E.
	788							
Every 3 minutes	789	104	12	White.....	65	1833	Not to be depended on.
	790							

BUENOS AYRES, ETC.—Continued.

Number.	Name.	Location.	Latitude.		Longitude.		Number of lights and relative positions.	Character of light.	Interval of revolution or dash.
			° S.	' "	° W.	' "			
791	English Bank (B.O.)	Light-vessel, in 7 fathoms; on tail, N. part of bank.	35	6 0	55	52 —	1	F.	
792									
793	Puñela Shoal	Light vessel a cable's length N. N.W. $\frac{1}{4}$ W. of shoal.	34	51 0	56	25 0	1	F.	
794									
795		W. side of harbor, on mount..	34	53 3	56	15 13	1	F. & Fl.	A flash every 3 minutes for 15 seconds.
796									
797	Monte Video (B.O.)	End of breakwater, on San José Point.					1	F. red.	
798									
799		Cathedral, S. tower	34	54 20	56	12 58	1	F.	
800									
801	Point Indio Light-ship.	Light-vessel, in 3 $\frac{1}{2}$ fathoms, N.E. $\frac{1}{4}$ N., 8 miles from Indio Point.	35	11 —	57	3 —	1	F.	
802									
803	Chico Bank (B.O.)	Light-vessel, in 4 $\frac{1}{2}$ fathoms, N.E. $\frac{1}{4}$ N., from Point Aulaya 11 $\frac{1}{2}$ miles.	34	46 45	57	28 —	1	F.	
804									
805	Colonia (B.O.)	S.W. angle of plaza	34	28 20	57	52 —	1	Rev.	Every 2 minutes.
806									
807		In 2 $\frac{1}{2}$ fathoms, guard-ship outer roads.	34	34 30	58	18 —	1	F.	
808	Buenos Ayres (B. A.)								
809		Custom-house tower					1	F.	
810	MARTIN GARCIA		34	11 10	58	13 30		F. white.	

BUENOS AYRES, ETC.—Continued.

Number.	Height of light above sea level.	Distance visible, in nautical miles.	Character of light, sound or vessel.	Height, in feet, of building from base to vane.	Character and order of illuminating apparatus.	Year estab.	Remarks.
791	8		Red, with 3 masts			1857	Position not <i>always</i> to be depended on.
792							
793	17	5				1866	
794							
795	48	25	Brown	25	C, 1st ord.	1852	The flash of 15 seconds is preceded and followed by a short eclipse. Dial-plate of clock in the S. tower of cathedral lighted by gas, which enables vessels to anchor by cross-bearings by night
796							
797	16					1850	
798							
799	147					1862	
800							
801	About 30	10	Two masts; a black ball at the foremast head.			1849	When pilots are on board, a RED and WHITE diagonal flag is hoisted. The vessel is frequently passed without being seen.
802							
803	About 20	10	Two masts			1857	After bad weather the position of this light is not to be depended on.
804							
805	110	10	Dull brick			1846	
806							
807	About 20	7	Three masts			1857	Var'n in 1870, 10° 20' E.
808							
809							
810							

BUENOS AYRES, ETC.—Continued.

Number.	Name.	Location.	Latitude.		Longitude.		Number of lights and relative positions.	Character of light.	Interval of revolution of flash.
			S.	N.	W.	E.			
811	FALKLAND ISLANDS (E.).	Pembroke Cape.....	51	40 40	57	41 48	1	F.	
812									
813	MAGELLAN STRAIT.....	Sandy Point, blockhouse $\frac{1}{2}$ mile from entrance to the river.	53	9 30	50	13 10	2	F.	
814									

WEST COAST OF SOUTH AMERICA.

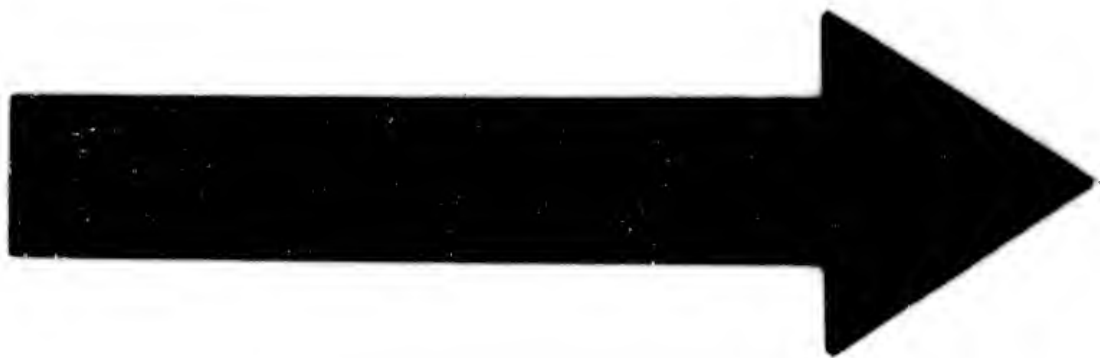
815	CHILOE ISLAND (C).....	N. part, San Carlos de Ancud, Huapihuay, or Punta Corona.	41	46 45	73	53 —	1	F. & Fl.	A flash every 2 minutes.
816									
817	VALDIVIA (C).....	Noble Fort Point.....	39	52 10	73	24 50	1	F.	
818									
819	COQUIMBO BAY, S. part (C.)	Tortuga Point.....	29	56 53	71	21 10	1	Fl.	Every 15 seconds
820									
821	QUIBUQUINA ISLAND, N. point.	Concepcion Bay, Talcahuano.	36	36 18	73	4 —	1	Rev.	Every $\frac{1}{2}$ minute.
822									
823	VALPARAISO (C).....	Angeles or Flynn Ancha Point.	33	1 10	71	39 —	1	F. & Fl.	A flash every minute.
824									
825	HUASCA (C).....		28	28 0	71	19 0	1		
826									
827	CALDERA PORT (C).....	On point.....	27	3 0	70	53 30	1	F. & Fl.	A flash every minute and a half.
828	MOHENDO HARBOR.....	On promontory.....	17	1 —	72	0 —	1	F.	

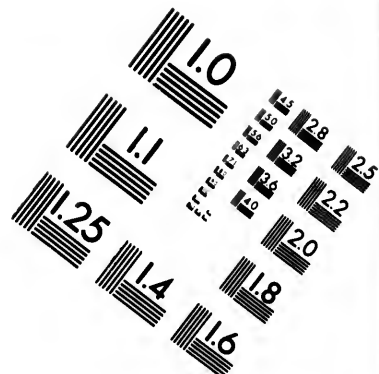
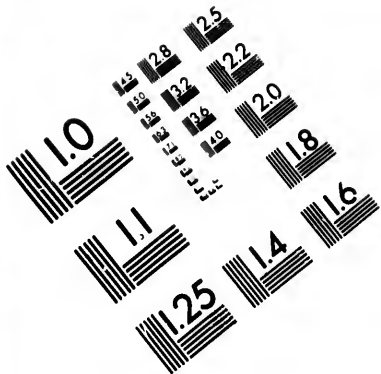
BUENOS AYRES, ETC.—Continued.

Interval of revolution or flash.	Number.	Height of light above sea level.	Distance visible, in nautical miles.	Character of light-house or vessel.	Height, in feet, of building from base to vase.	Number and order of illuminating apparatus.	Year lighted.	Remarks.
	811	110	14	Circular; iron; white and red bands.	60	1		Seen from seaward in every direction, and dark only between N.W. $\frac{1}{2}$ N. and S.W. $\frac{1}{2}$ W. Dark toward Porto William and Stanley (which are free ports). Var'n in 1870, 14° 55' E.
	812							
	813	19						Var'n in 1870, 21° 50' E.
	814							

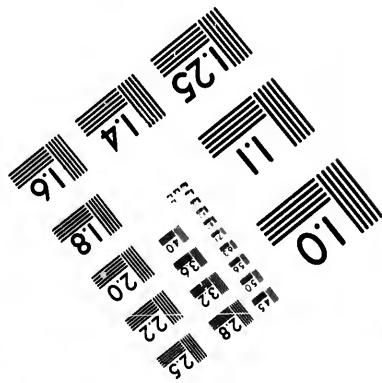
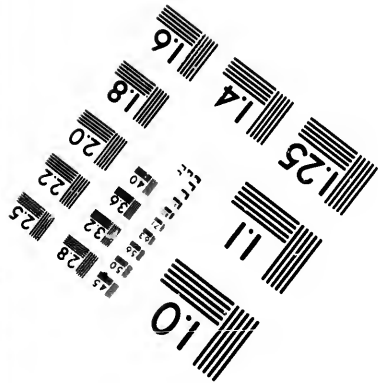
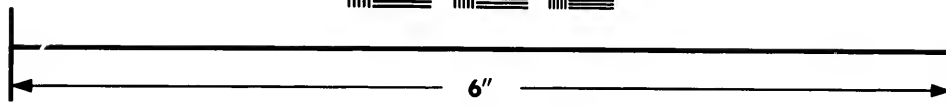
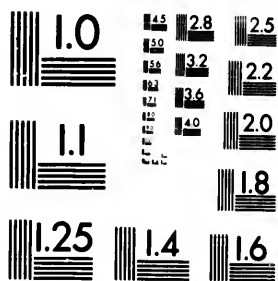
WEST COAST OF SOUTH AMERICA.

A flash every 2 minutes.	815	197	12	Circular; white; lantern green.	32	D., 4th ord.	1859	When the light bears S.E. by E., you may haul to southward.
	816							
	817	121	8	Square; wood; white....	24	D., 4th ord.	1866	
	818							
Every 15 seconds	819	106	12	Square; white; cupola green.	25	D., 4th ord.	1868	To mark Punta Arenas anchorage, in 8 fathoms.
	820							
Every 4 minute..	821	213	15	Circular; white; lantern and dome green.	36	D., 4th ord.	1869	Bright 9 seconds and eclipsed 21 seconds
	822							
flash every minute.	823	197	20	Circular; white.....	61	D., 4th ord.	1838	The flash is preceded and followed by a short eclipse. In coming from the southward the light does not open off Curaumilla Point until it bears to eastward of N. N.E. $\frac{1}{2}$ E. Longitude of Port Antonio, 71° 38' W. Var'n in 1870, 16° 20' E.
	824							
	825							Proposed.
	826							
flash every minute and a half.	827	123	15	Square; wood; white; rail black; lantern green.	42	D., 4th ord.	1868	
	828	147	3	On flag-staff, 65 feet high.				





**IMAGE EVALUATION
TEST TARGET (MT-3)**



**Photographic
Sciences
Corporation**

23 WEST MAIN STREET
WEBSTER, N.Y. 14580
(716) 872-4503

10
16
18
20
22
25
28
32
36

10
16
18
20
22
25
28
32
36

WEST COAST OF SOUTH AMERICA—Continued.

Number.	Height of light above sea level.	Distance visible, in nautical miles.	Character of light-house or vessel.	Height, in feet, of building, from base to vane.	Character and order of illuminating apparatus.	Year lighted.	Remarks.
829	880	12	Wood; octagonal form	60		1857	Not visible from N.W. $\frac{1}{2}$ N. to W. by N. $\frac{1}{2}$ N.; just open on latter bearing will lead through Boqueron Channel in $4\frac{1}{2}$ fathoms. Var'n in 1870, 11° E.
830							
831						1872	Var'n in 1870, $9^{\circ} 45'$ E.
832							
833						1870	
834							

CENTRAL AMERICA AND MEXICO, S.W. COAST.

835	65	9	White		D., 3d ord.	1856	
835 $\frac{1}{2}$		7 to 8				1872	
836		6 to 7				1872	
837	855	4 or 5				1858	For mail steamers only, when expected. Var'n in 1870, $8^{\circ} 25'$ E.
838							

BRITISH COLUMBIA.

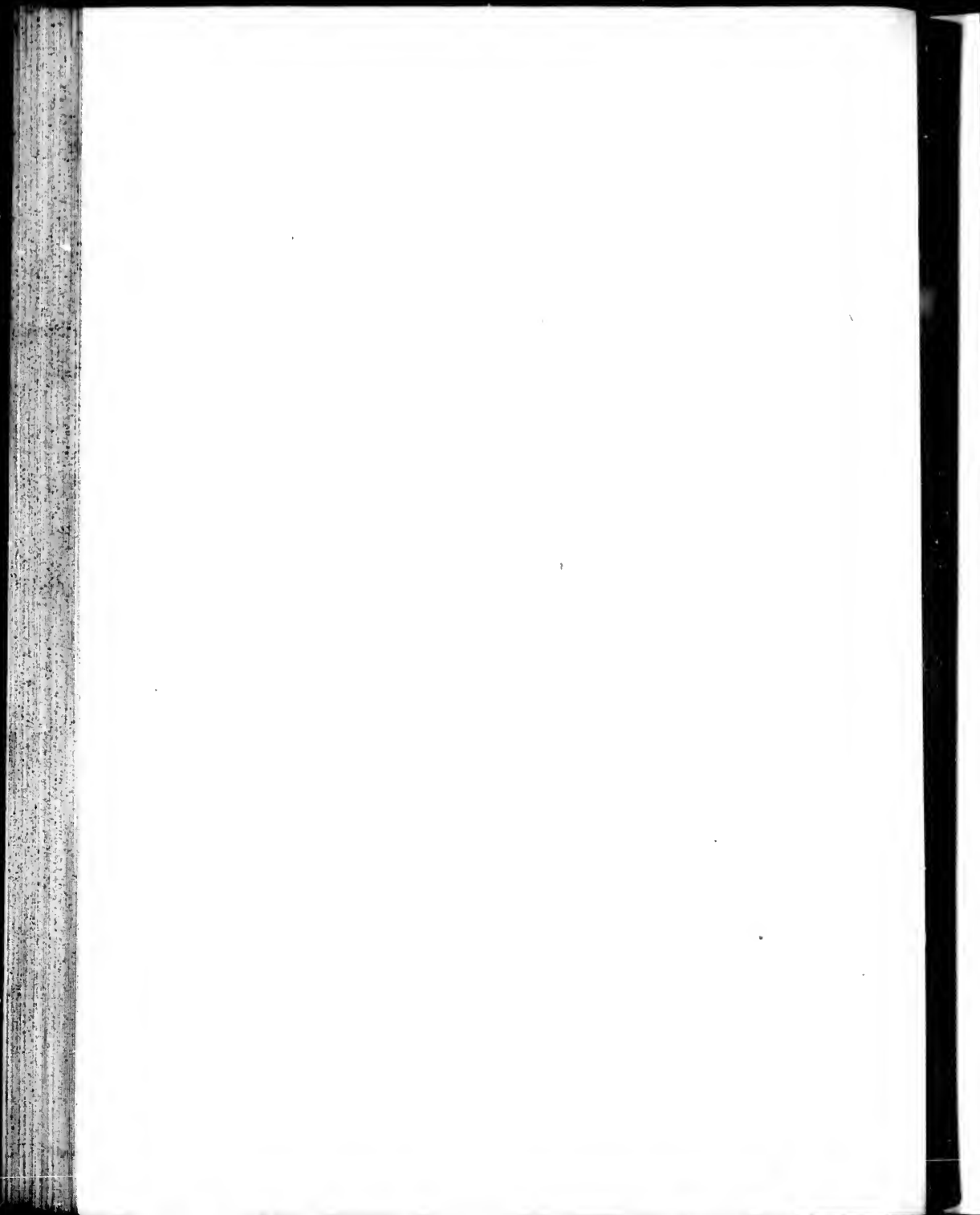
839	118	18	Tower stone; with 5 alternate horizontal bands, black and white.		D., 2d ord.	1861	A fog bell has been established at Race Island Light-house, Juan de Fuca Strait, which will be used as occasion may require. S.E. by E., 3 or 4 cables' length, is a reef, having 5 feet thereon.
840							
841	70	10	White; iron; lantern red	57	D., 4th ord.	1860	BRIGHT when bearing from N. $\frac{1}{2}$ W. to N.W. by W. $\frac{1}{2}$ W. RED from N.W. by W. $\frac{1}{2}$ W. to S. $\frac{1}{2}$ E., and eclipsed from S.E. $\frac{1}{2}$ E. landward to the BRIGHT limit. Var'n in 1870, $21^{\circ} 30'$ E.
842							
843	About 54	11	Red, with 2 masts; on the mainmast is a ball.		C., 6th ord.	1866	White name on her sides. Bell sounded in foggy weather. Var'n in 1870, 23° E.
844							

HAWAIIAN ISLANDS (or Sandwich Islands).

Number.	Height of light above sea level.	Distance visible, in nautical miles.	Character of light-house or vessel.	Height, in feet, of building from base to vane.	Character and order of illuminating apparatus.	Year lighted.	Remarks.
815	50	10				1869	
846							
847	50	10				1869	With the light bearing E. N.E. is good anchorage about $\frac{1}{4}$ of a mile off shore.
848							
849		6				1868	Var'n in 1870, 9° 10' E.
850							
851	} 26 } 28	9			D., 4th ord.	1869	Visible between the bearings of E. and N.W. by W. round by N. GREEN light. To enter the harbor, bring the two lights in one.
		5					
852							

SOCIETY ISLANDS.

853	350	15	Square tower; white.....	72	D., 3d ord.	1868	Visible between the bearings of E. by S. and S.W. by W. $\frac{1}{4}$ W. round by N. Var'n in 1870, 7° 51' E.
854							
855						1869	On beacons, which serve as a leading mark through the channel, one of which is on the corner of the Battery de l'Embuscade, and the other on the side of the hill beyond. Lights not to be depended on.
856							To the right of the lights which serve as a leading mark, about $\frac{1}{4}$ of a mile W. N.W. from the first light.
857		5	White beacons with red diamonds.			1871	The inner light is placed on a hill behind the town; the other a little to the S. of the Wesleyan Mission-house. The lights by night or beacons by day, kept in line, lead through the middle of S. entrance passage.
858							



INDEX.

	<i>No.</i>		<i>No.</i>		<i>No.</i>
A.					
Abaco	521	Bireh Point	315	Carnool Mountain	641
Abrolhos Islands	757	Bird Island	383	Caraquet Island	317
Acujutla, San José de	835½	Bird Island	523	Cardenas Bay	549
Acapulco	837	Black Rock Point	385½	Carligan Bay	347
Aleantara	731	Bliss Island	470	Caribbean Islands	601 to 656
Amet Island	361	Blockhouse Point	353	Caribba Island	263
Amherst, Fort	17	Boar's Head	463	Carleton Point	319
Amherst Islands	49	Bois Blanc Island	279	Carlisle Bay	655
Amherstburgh	279	Bojurn	779	Carousal Island	73
Amour Point	3	Bokel Cay	675	Carron Point	319
Angeles Point	823	Bonami Point	331	Carters Island	442
Anguilla Cay	533	Bonnyvata	7	Casoumpette	341
Annapolla, or Digby	467	Braganza Shoul.	725	Cassels Point	354
Anticosti and Islands	63 to 67	Brams Point	713	Castile Point	679
Antigua Islands	613	Brandy Pots	87	Castle Island	525
Antilles, Great	537 to 600	Brava Point	695	Castles Harbor	643
Antonio, Fort San	751	Brazil	725 to 785	Catalina Harbor	9
Apple River	483	British Columbia	829 to 841	Catfish Creek	271
Arichat Harbor	405	Bruce Port	271	Catherina, Santa	771
Arichat Harbor, West	404	Rinet Island	41	Cay Diana	551
Arsineau Point	331	Bryer Island	459	Cayeeno	715 to 724
Aspinwall	681	Buenos Ayres (City)	807 to 809	Cayes Bay	593
Atalia Point	727	Buenos Ayres	787 to 813	Cayo Cruz	553
Athol Island	517	Burin Island	31	Cay Piedras	575
		Burlington Bay	255	Ceara	737
B.		Burnt Island	209	Central America and Mexico	835 to 838
Bacallen Island	11	Burwell Port	269	Ceperon Bay	721
Bacero Point	445			Chaleur Bay	320 to 323
Bacolet Point	703	C.		Champlain	123
Bacots Bluff	63	Cabello, Puerto	695	Chantry Islands	287
Bahama Islands	509 to 536	Cadiz, Bahia de	555	Charles Cape	115
Bahia de Cadiz	535	Caldera Port	827	Charlotte Fort	649
Bahin, or San Salvador	751 to 753	Calhabouco Point	765	Charlotte Town Harbor	353
Balsandry Head	587	Callao	829	Chateauguny	175
Barceen	565	Campeche	685	Chebueto Head	418
Barbados Island	651 to 655	Campobello Island	497	Chesabucto Bay	401
Barba Negra	785	Canon Point	37	Cherry	169
Barbura Island, Santa	757	Canso Cape	407	Cherry Island	187
Barclay Point	613	Canso Gut (N. entrance)	373	Chester Bay	423
Barlovento Point	539	Canso Gut (ship harbor)	376	Chetcamp Island	380
Basse Terre	625	Canso Gut (S. entrance)	399	Chico Bank	803
Batabono	577	Canso Harbor	406	Chignecto Bay	483
Bathurst Harbor	319	Cape Breton Island	377 to 398	Chiloe Island	815
Batiscan	121	Cape Capstan	483	Christian Island	297
Bay of Quinte	221, 292	Cape Chatte	71	Christianstadt Fort	605
Beach Point	451	Cape Frio	759	Christovno	783
Beach, point of	387	Cape Madelleno	125 to 127	Ciboux Island	383
Beauharnois	177	Cape Magdalen	69	Cienfuegos Harbor	573
Beaver Islands	411	Cape Mayst	567	Clairo Point	171
Bedeque Bay	355 to 357	Cape Norman	2	Clapperton Island	309
Belize	671 to 673	Cape Pine	29	Clark Point	285
Belle Chasse	101	Cape Race	27	Cobequid Bay	479
Belle Isle	1	Cape Bay	43	Coburg	233
Berbee	711	Cape Roseway	443	Cochinos Bay	575
Bermuda Island	507, 508	Cape Rouge	97	Cocoonut Shoul	647
Bisquette Island	79	Cape Sable	53	Coffin Island	435
Big Bras d'Or	385	Cape Santa Maria	447	Colborne Port	259
Big Fish Island	449	Cape Santa Maria	786½	Coles Shoul	195
Big Outer Creek	269	Cape St. Mary	31	Colonia	805
Bill Hook Island	343	Cape St. Mary	457	Colorado Point	573

	No.		No.		No.
Conception Bay	821	Flat Point	389	Gull Island	235
Conchas, Moro das	769	Flint Island	391	Gull Rock	441
Convent of San Francisco	609	Flores Island	789	Gun Cay	509
Coquilmo Bay	819	Foelinho do Cobo Point	759	Guyana, New Grenada, and Vene-	
Corwall Cannl	193	Foreland or Long Point, N.	267	zuela	681 to 724
Coteau du Lac	183	Fortean Bay	3	Guysborough Harbor	401
Cotladiba Bar	749	Fort Point	437		
Cranberry Island	407	Fort St. Louis	633		
Cranberry Point	410	Fortune Bay	41	II.	
Credit Port	351	Fourchu, Cape	455	Hacha, Rio de In	685
Crib	191	Fox Island	331	Haiti, Port au Princes	595 to 597
Croix, St.	603 to 605	Fox Island	231	Half-moon Cay	677
Crooked Island Passage	523 to 525	Française Point	714½	Halifax	415 to 417
Cross Island	425	Francis Port, St.	129	Halifax Harbor, entrance to	418
Cruz, Cape	571	Francisco, San	747	Hara Point, O'	57
Cruz, Santa	603 to 605	Francisco, Convent of San	650	Harbor Grace	13 to 15
Cruz, Vera	659, 660	Fraser River	843	Hart's Island	406
Cuba	537 to 580	Frederichstadt Port	603	Havana	543
Curaçoa Island, Great	689	Frio, Cape	753	Hawaii Island	845 to 847
Curaçoa Island, Little	691	Fundy, Bay of	451 to 506	Hawillan Islands	845 to 852
				Head Harbor	497
				Heath Point	61
D.		G.		Hetty Point	483
Dalhousie Harbor	257	Ginge or Simeoe	217	Hillsborough Bay	351
Darlington	239	Gananoque Narrows	201	Hilo Harbor	845
De La Plata, Rio	787 to 809	Gannet Rock	505	Hobson's Nose	424
Demerara	707 to 709	Garola, Martin	810	Hog Island	515
Devil Island	415	Gaspe Bay	55 to 57	Hole in Wall	519
Diana Cay	351	Gaspe Harbor	59	Honduras, Cape	674
Digby or Annapolis	467	George Bay, St.	371	Honolulu	851
Dodding Head	33	George, Cape St.	949	Hood, Port	377
Domlago, Santa	589	Georgetown	349	Hope Islet, Little	439
Dominica Island	629	Georgian Bay	289 to 309	Hope, Port	237
Duver, Port	365	Georgia, Gulf of	843	Horton	475
Ducks, False	219	Gibb's Hill (Bermuda)	507	Huaplaycy	815
		Gibraltar Point	247	Husen	825
E.		Goatzacencos River	661	Huckleberry	330
East Beaver Island	411	Gobernadora	541	Huron, Lake	293 to 312
East Ironbound Island	423	Goderich	283		
East Point	345	Gonzalo River	739	I.	
Ebert Harbor, Port	440	Gozier Islet	617	Icaosa Point	701
Eddy or Sand Point	399	Grace, Harbor	13 to 15	Icnaeo Island, St.	313
Edward Island, Prince	339 to 369	Grande Do Norte, Rio	741	Iguana Island, Great	527
Egg Island	74, 413	Grande Do Sul, Rio	773	India Point, Light-slip	801
Egg Island or Scotch Bonnet	225	Grande Ido Kanooutaska	91	Ingonish Island	381
Elbow Cay	521	Grand Manan Island	501	Ironbound Island, E.	423
Enfant Perdu	717	Great Antilles	537 to 600	Ironbound Island, W.	431
English Bank	791	Great Curaçoa Island	689	Isaac Island, Great	511
English Cay	671	Great Inagua Island	527	Isle à la Bague	153
English Harbor, Fort Berkeley	613	Great Isaac	511	Isle à la Pierre	143
Enragé Cape	487	Great Stirrup Cay	513	Isle aux Prunes	149
Erle Lake	259 to 278	Green Island	85	Isle aux Raisins	139 to 141
Escumance Point	329	Green Island	403	Isle of Coves	289
Espana Port	639	Green Shoal	173	Isle of Pines	579
Espirito Santo Bay	758	Griffith Island	291	Incolomi	729
Esquimalt	841	Grifo Island	837		
Estreito	777	Grindstone	485	J.	
		Grondine	117	Jack-straw Shoal	263
F.		Grosse Point	179	Jacmel	591
Falkland Islands	811	Grosse Point, Off	181	Jago de Cuba, St.	569
False Ducks	219	Gundaloupe Island	615 to 625	Jagua Harbor	573
Father Point	77	Guana Cay, Little	521	Jamaica Island	581 to 585
Ferryland Head	25	Guanoes	547	Junero, Rio de	763 to 765
Fisgard Island	841	Gunnyquil	831	Jerseyman's Island	404
Fishery Island	343	Gulf of St. Lawrence	45 to 96	John's Harbor, St.	17 to 21
Fish Island, Big	449			José Fort, San	589

INDEX.

No.
235
441
509
and Vene-
681 to 724
401

683
595 to 597
677
415 to 417
418
57
13 to 15
406
543
843 to 847
845 to 852
497
61
493
351
845
424
515
519
673
651
377
439
237
475
815
825
330
293 to 312

701
313
527
801
391
423
431
511
153
143
149
139 to 141
289
579
729

803
591
569
573
581 to 585
763 to 765
404
17 to 21
589

No.		No.
797	José Point, San	797
337	Jourimain Island	337
659	Juan de Ulloa, San	659
599	Juan, Fort San	599
539	Jutias Cay	539
K.		
91	Kamouraska, Grand Isle	91
213	Kingston	213
L.		
1 to 4	Labrador	1 to 4
161	Laehue	161
693	Lacoe, S. point	693
556	La Grande, Sagua	556
663	Laguna de Terminos	663
685	La Hacha, Rio de	685
849	Lahunata	849
849	Lahaina Port	849
259 to 278	Lake Erie	259 to 278
393 to 312	Lake Huron	393 to 312
213 to 258	Lake Ontario	213 to 258
291 to 292	Lake St. Clair	291 to 292
183 to 193	Lake St. Francis	183 to 193
161 to 165	Lake St. Louis	161 to 165
133 to 141	Lake St. Peter	133 to 141
313 to 314	Lake Superior	313 to 314
836	La Libertad	836
113	Langhaia Point	113
787 to 809	La Plata, Rio de	787 to 809
82	Lark Islet	82
445	Lator Port	445
145	La Valtrie	145
45 to 96	Lawrence Gulf and River, St.	45 to 96
37 to 212	Lawrence River, St.	37 to 212
495	Lepreau	495
857	Levuka Harbor	857
836	Libertad, La	836
410	Liscomb Island	410
691	Little Curagon	691
397	Little Current	397
521	Little Gimna Cay	521
439	Little Hope Islet	439
433 to 437	Liverpool Bay	433 to 437
245	Liverpool or Pickering	245
531	Lobos Cay	531
301	Lonely Island	301
89	Long Pilgrims	89
267	Long Point	267
829	Lorenzo Island	829
397	Louisburg Harbor	397
643 to 647	Lucia Island, St.	643 to 647
563	Lucrecia	563
733	Luz, Maranhann San	733
758	Luzia, Santa	758
199	Lyndock Island	199
M.		
745	Macao	745
503	Machias	503
737	Macarpe Point	737
405	Madame Island	405
125 to 127	Madeleloe, Cape	125 to 127
69	Magdalen, Cape	69
51	Magdalen Islands	51

No.		No.
813	Mageilan Strait	813
424	Mahone Bay	424
263	Maitland Port	263
425 to 427	Malaguash Bay	425 to 427
330	Maleolm Point	330
787	Maldonado	787
76	Manleongan Shoals	76
501	Manan Islands, Grand	501
691	Manzanillo Island	691
687	Maracaibo	687
405	Marache Point	405
733	Maranhann	733
781	Mares	781
733	Mareello, Fort San	733
733	Mareos, Fort San	733
379	Margaree Island	379
471	Margreenville	471
627	Marlegante Island	627
714, 714½	Marion River	714, 714½
469	Marshall Cove	469
683	Martin, Santa	683
635	Marthe Point, St.	635
810	Martin Garcia	810
631 to 641	Martinique	631 to 641
687	Marycubo	687
31	Mary, Cape St.	31
437	Mary, Cape St.	437
591	Materillos Point	591
417	Mauger Beach	417
689	Mauger Cay	689
849	Maul Island	849
567	Mays, Cape	567
185	McGee's Point	185
174½	McTavish Point	174½
769	Mel, Island do	769
433	Metway Head	433
433	Metway Port	433
657 to 680	Mexico and Central America	657 to 680
680	Mexico and Central America, S.W.	680
835 to 837	Coast	835 to 837
299	Miak Island	299
329, 330	Miamichl Bay	329, 330
315	Miscou Island	315
767	Moela Island	767
261	Molauk Island	261
828	Molendo Harbor	828
601	Mohlenfels Point	601
677	Moon Cay, Half	677
795 to 799	Monte Video	795 to 799
159	Montserrat	159
611	Montserrat Island	611
75	Mont, Point de	75
581	Morant Point	581
543	Morro Castle	543
755	Morro de San Paolo	755
663	Morro Island	663
429	Mosher	429
623	Moule de Port	623
621	Mouron Islet	621
N.		
515	Nassau Harbor	515
771	Nantagados, Ponta dos	771
655	Needham Point	655

No.		No.
765	Negra, Barba	765
631	Negros, Pointe des	631
444	Negro Harbor	444
444	Negro Island	444
315 to 328 and 485 to 506	New Brunswick	315 to 328 and 485 to 506
5 to 44	Newfoundland	5 to 44
681 to 794	New Grenada, Venezuela, and Guy-	681 to 794
107	Neuf, Port	107
835	Nicoya Gulf	835
817	Niebla Fort Point	817
2	Norman, Cape	2
267	North Foreland	267
339	North Point	339
334	Northumberland Strait	334
741	Norio, Rio Grande do	741
293	Nottawasaga Island	293
361 to 484	Nova Scotia	361 to 484
559 to 561	Nuevitas	559 to 561
O.		
651	Oahu Island	651
330	Oak Point	330
253	Oakville	253
181	Off Grosse Point	181
57	O'Hara Point	57
213 to 258	Ontario, Lake	213 to 258
174	Orignid, Point l'	174
102	Orleans Island	102
189 to 174½	Ottawa River	189 to 174½
269	Otter Creek, Big	269
857	Ovalun Island	857
P.		
533	Padre, Cayo Cruz del	533
793	Panela Shoal	793
833	Panama	833
755	Paolo, Morro de San	755
855, 856	Papilote, Port	855, 856
725 to 727	Para	725 to 727
769	Parana, S. E. y	769
557	Paradon Cay Grande	557
289	Parry Sound Harbor	289
481	Parborough	481
481	Partridge Island (Bay of Fundy)	481
305	Partridge Island (Georgian Bay)	305
491	Partridge Island (St. John's Harbor)	491
775 to 789	Patos Lake	775 to 789
45 to 47	Paul Island, St.	45 to 47
401	Peart Point	401
421	Peggy's Point	421
275	Pelee Island	275
277	Pelee Spit	277
811	Pembroke Cape	811
579	Pepe	579
717	Perdu, Enfant	717
743	Pernambuco	743
461	Peter Island	461
223	Peter Point	223
235	Peter Rock	235
615	Petite Terre	615
463	Petit Passage	463
783	Peyrera, Christovao	783
245	Pickering or Liverpool	245

	No.		No.		No.
Pietou Harbor	365	Punta Corona	815	San José de Acuña	835
Pietou Island	367	Punta dos Naufragados	771	San Juan de Ulloa	659
Piedras Cay	549			San Luis (Maranhão)	733
Piedras Cay, N. part	575	Q.		San Marcello, Fort.	753
Pierro Bay, St.	639	Queen's Wharf (Toronto)	249	San Marcos, Fort.	733
Pierre des Boquets, St.	119	Quilate, Bay of	221, 222	San Paolo, Morro de	755
Pierre, Isle à la	143	Quitridina Island	821	San Salvador, Bahia, or	751
Pierre Island, St.	35 to 39			Santa Anna	735
Pigeon Island	218	R.		Santa Barbara Island	757
Pilgrims, Long	89	Raca, Cape	97	Santa Catharina Island	771
Pillar, Stone	95	Race Island	839	Santa Clara Island	831
Pilots' Point	559	Ragged Point	651	Santa Cruz	545
Pine, Cape	29	Raisins, Isle Aux	139	Santa Cruz Port	761
Pines, Isle of	579	Rancheria Point	556	Santa Cruz Island	603 to 605
Piozones, Los	549	Range Light	307	Santa Lusia	758
Planquata Cay	535	Ray, Cape	43	Santa Maria, Cape	764
Plata, Rio de la	787 to 809	Raza Island	761	Santa Marta	683
Platon Point	169	Red Island Bank	81	Santo Domingo	587 to 597
Playa Ancha Point	823	Red Islet	83	Santo Domingo	589
Plain Point	583	Red Rock	303	Santos	767
Point Amour	3	Repentigny	151	Savannah Port	684
Pointe à Pitre	619	Richelieu	111	Searborough Point	763
Pointe des Negres	631	Richibucto	333	Scutari Island, N.E. point	393
Point aux Trembles	157	Richmond Harbor	243	Scutari Island, W. end	395
Point of Beach	387	Rich Point	4	Scotch Bonnet Island	225
Point Claire	169 to 171	Rico Island, Puerto	599	Scotia, Nova	361 to 484
Point du Lac	131	Rif Fort	689	Senosow Head	355
Point de Monte	75	Rimonaky	77	Sent Island	453
Point, Father	77	Rio de Janeiro	763 to 765	Sennan's Point	359
Point Indio (light-ship)	801	Rio de la Hache	685	Sea Wolf Island	579
Point Langlais	113	Rio de la Plata	787 to 809	S. entrance, Canso Gut	399
Point l'Original	174	Rio Grande do Norte	741	Shafsbury	307
Point Pleasant	221	Rio Grande do Sul	773	Shediac	335
Point St. Pierre	119	Rivière du Loup (light-ship)	135	Shelburne Harbor	443
Point Rich	4	River St. Lawrence	97 to 212	Shingle Beach	449
Point Tupper	375	River St. Lawrence	212	Ship harbor, Canso Gut	375
Pouquet, St. George Bay	371	Roqueta Island	837	Sincoe	217
Portage Beach	327	Roseau Bay	829	Sisal	667
Portage Island	325	Roseway, Cape	443	Sisiboo River	405
Port au Prince (Half)	595 to 597	Rouge, Cape	97	Snake Island	215
Port Ebert Harbor	440	Royale Island	715	Society Islands	153 to 858
Port Espana	699	Rozier Cape	53	Sombro Island	607
Port Hood	377	Rugged Island Harbor	441, 442	South Cape	49
Port Lahaion (Lahinaluon)	849			Southwestern Wolf Island	468
Port Latour	445	S.		Spear, Cape	23
Port Neuf	107	Sable, Cape	447	Spectacle Shoal	205
Port Papete	855, 856	Sagua la Grande	556	Spencer Point	479
Port Santa Cruz	545	Saguenay River	82	Spit, Pelce	277
Port Savanilla	684	Sal Cay	533 to 535	Stanley Port	273
Port Stanley	273	Salmon Point	224	Stirrup Cay, Great	513
Port St. Andrew	459	Salutation Head	355	Stone Island	143
Port St. Francis	129	Salut Islets	715	Stone Pillar	95
Port Williams	469	Samana Bay	587	Straw Shoal, Jack	293
Pots, Broody	87	Sambro	419	St. Andrew, Port	499
Presque Isle	529	Sand Point	399	St. Antoine	181
Prim Point	467	Sandy Head Point	59	St. Christopher Island	669
Prince Edward Island	329 to 360	Sandy Island	341	St. Clair, Lake	281 to 282
Princes, Isle Aux	149	Sandy Point	813	St. Croix	165
Punkaa Point	845	Sandwich Islands	845 to 852	St. Croix Island	603 to 605
Pubnico Harbor	451	San Antonio	537	St. Francis Lake	193 to 199
Puerto Cabello	685	San Antonio, Port	751	St. Francis Port	129
Puerto Rico Island	599	San Carlos de Aneud	815	St. George Cape	369
Pugwash Harbor	359	San Francisco	747	St. Ignace	313
Punta Arenas	835	San Francisco, Convent of	661	St. John's Harbor (Newfoundland)	17 to 21

INDEX.

V

No.
 8354
 659
 733
 753
 733
 755
 751
 735
 757
 771
 831
 645
 703
 603 to 605
 758
 7864
 683
 587 to 597
 589
 707
 681
 703
 393
 395
 395
 361 to 484
 355
 433
 359
 379
 399
 307
 335
 443
 440
 375
 217
 607
 465
 215
 853 to 858
 607
 49
 468
 23
 205
 479
 277
 271
 513
 143
 95
 203
 498
 103
 608
 281 to 282
 105
 603 to 605
 183 to 193
 129
 368
 313
 (ndland) 17 to 21

No.	No.
St. John's Harbor (N. Brunswick) 491 to 493	493
St. Lawrence Point 102	102
St. Lawrence Gulf and River 45 to 96	96
St. Lawrence River 97 to 212	212
St. Louis, Fort 633	633
St. Louis Lake 163 to 165	165
St. Lucia Island 643 to 648	648
St. Margaret's Bay 421	421
St. Mary, Cape 31	31
St. Mary, Cape (Bay of Fundy) 457	457
St. Paul Island 45 to 47	47
St. Peter's Lake 133 to 139	139
St. Pierre des Becquets 119	119
St. Pierre Island 35 to 39	39
St. Roque Shoals 92, 93	93
St. Therese 155	155
St. Thomas 601	601
St. Vincent Island 649	649
S. Traverse (light-ship) 93	93
Sulphur Island 311	311
Superior, Lake 313	313
Suregonoa 775	775
Surinam 713	713
Swallow's Tail 501	501
Sydney 388, 389	389
T.	
Tahiti 853	853
Talechunno 821	821
Taupico 657	657

No.	No.
Tapiou Battery 643	643
Telegraph Island 222	222
Thames River 281	281
Therese, St. 155	155
Thomas, St. 601	601
Toronto 247 to 249	249
Tortuga Point 819	819
Tower, Old Lookout 661	661
Traverse 147	147
Traverse, South 93	93
Trembles, Point aux 157	157
Trinidad 699 to 701	701
Truxillo 679	679
Turks Island 529	529
Turneff Cayn 660	660
Tusket River 449	449
U.	
U'ilon, Fort San Juan de 659	659
V.	
Vache Isle 503	503
Vaidivin 817	817
Valparaiso 823	823
Valtrie, La 145	145
Vancouver Island 839 to 841	841
Venus Point 853	853
Venezuela and Guyana, New Gren- ada 681 to 724	724
Vera Cruz 659, 660	660
Video, Monte 795 to 799	799

No.	No.
Vieille Ville Shoal 645	645
Vineent Island, St. 649	649
Virgin and Caribbee Islands 601 to 656	656
W.	
Wade Shoal 167	167
Wadhams, Offer 5	5
West Arlebat Harbor 404	404
West Coast of South America 815 to 834	834
Western Light (St. Peter's Lake) 137	137
West Ironbound Island 431	431
Weymouth 465	465
Whitby Harbor 243	243
White Cliff 391	391
White Head Island 409	409
Wicked Point 324	324
William Island 411	411
Williams, Port 469	469
Wolfe Island 211	211
Wolfe Island, Southwestern 468	468
X.	
Xagua Harbor 573	573
Xicalango Island 663	663
Y.	
Yarmouth 455	455
Yeo Point 217	217
Z.	
Zaparo Island 687	687

0

