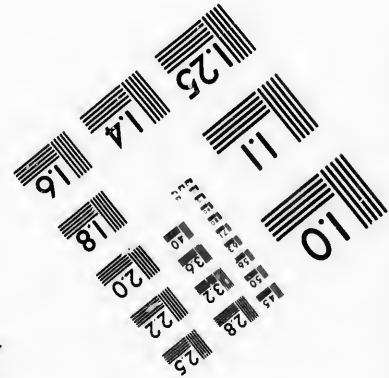
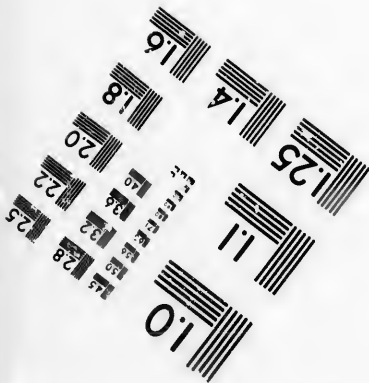
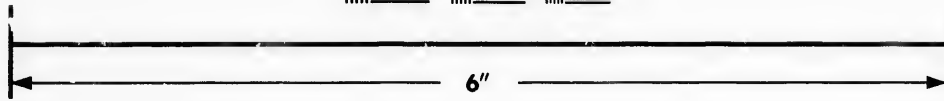
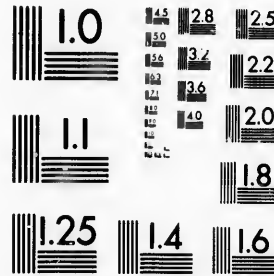


**IMAGE EVALUATION
TEST TARGET (MT-3)**



**Photographic
Sciences
Corporation**

23 WEST MAIN STREET
WEBSTER, N.Y. 14580
(716) 872-4503

14
12
10
8
6
4
2
18
20
22
25

**CIHM/ICMH
Microfiche
Series.**

**CIHM/ICMH
Collection de
microfiches.**



Canadian Institute for Historical Microreproductions / Institut canadien de microreproductions historiques

10
11
12
13
14
15
16
17
18
19
20
21
22
23
24
25

© 1987

Technical and Bibliographic Notes/Notes techniques et bibliographiques

The Institute has attempted to obtain the best original copy available for filming. Features of this copy which may be bibliographically unique, which may alter any of the images in the reproduction, or which may significantly change the usual method of filming, are checked below.

L'Institut a microfilmé le meilleur exemplaire qu'il lui a été possible de se procurer. Les détails de cet exemplaire qui sont peut-être uniques du point de vue bibliographique, qui peuvent modifier une image reproduite, ou qui peuvent exiger une modification dans la méthode normale de filmage sont indiqués ci-dessous.

- | | |
|--|--|
| <input type="checkbox"/> Coloured covers/
Couverture de couleur | <input type="checkbox"/> Coloured pages/
Pages de couleur |
| <input type="checkbox"/> Covers damaged/
Couverture endommagée | <input type="checkbox"/> Pages damaged/
Pages endommagées |
| <input type="checkbox"/> Covers restored and/or laminated/
Couverture restaurée et/ou pelliculée | <input type="checkbox"/> Pages restored and/or laminated/
Pages restaurées et/ou pelliculées |
| <input type="checkbox"/> Cover title missing/
Le titre de couverture manque | <input checked="" type="checkbox"/> Pages discoloured, stained or foxed/
Pages décolorées, tachetées ou piquées |
| <input type="checkbox"/> Coloured maps/
Cartes géographiques en couleur | <input type="checkbox"/> Pages detached/
Pages détachées |
| <input type="checkbox"/> Coloured ink (i.e. other than blue or black)/
Encre de couleur (i.e. autre que bleue ou noire) | <input checked="" type="checkbox"/> Showthrough/
Transparence |
| <input type="checkbox"/> Coloured plates and/or illustrations/
Planches et/ou illustrations en couleur | <input type="checkbox"/> Quality of print varies/
Qualité inégale de l'impression |
| <input type="checkbox"/> Bound with other material/
Relié avec d'autres documents | <input type="checkbox"/> Includes supplementary material/
Comprend du matériel supplémentaire |
| <input type="checkbox"/> Tight binding may cause shadows or distortion
along interior margin/
La reliure serrée peut causer de l'ombre ou de la
distorsion le long de la marge intérieure | <input type="checkbox"/> Only edition available/
Seule édition disponible |
| <input type="checkbox"/> Blank leaves added during restoration may
appear within the text. Whenever possible, these
have been omitted from filming/
Il se peut que certaines pages blanches ajoutées
lors d'une restauration apparaissent dans le texte,
mais, lorsque cela était possible, ces pages n'ont
pas été filmées. | <input type="checkbox"/> Pages wholly or partially obscured by errata
slips, tissues, etc., have been refilmed to
ensure the best possible image/
Les pages totalement ou partiellement
obscurcies par un feuillet d'errata, une pelure,
etc., ont été filmées à nouveau de façon à
obtenir la meilleure image possible. |
| <input type="checkbox"/> Additional comments:/
Commentaires supplémentaires: | |

This item is filmed at the reduction ratio checked below/
Ce document est filmé au taux de réduction indiqué ci-dessous.

10X	12X	14X	16X	18X	20X	22X	24X	26X	28X	30X	32X
					✓						

The copy filmed here has been reproduced thanks to the generosity of:

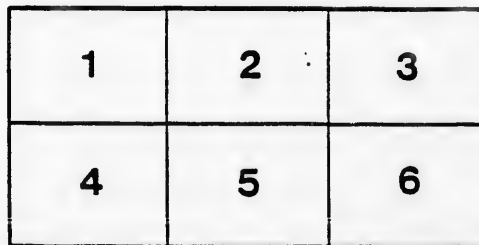
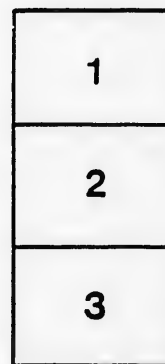
Archives of Ontario
Toronto

The images appearing here are the best quality possible considering the condition and legibility of the original copy and in keeping with the filming contract specifications.

Original copies in printed paper covers are filmed beginning with the front cover and ending on the last page with a printed or illustrated impression, or the back cover when appropriate. All other original copies are filmed beginning on the first page with a printed or illustrated impression, and ending on the last page with a printed or illustrated impression.

The last recorded frame on each microfiche shall contain the symbol \rightarrow (meaning "CONTINUED"), or the symbol ∇ (meaning "END"), whichever applies.

Maps, plates, charts, etc., may be filmed at different reduction ratios. Those too large to be entirely included in one exposure are filmed beginning in the upper left hand corner, left to right and top to bottom, as many frames as required. The following diagrams illustrate the method:



L'exemplaire filmé fut reproduit grâce à la générosité de:

Archives of Ontario
Toronto

Les images suivantes ont été reproduites avec le plus grand soin, compte tenu de la condition et de la netteté de l'exemplaire filmé, et en conformité avec les conditions du contrat de filmage.

Les exemplaires originaux dont la couverture en papier est imprimée sont filmés en commençant par le premier plat et en terminant soit par la dernière page qui comporte une empreinte d'impression ou d'illustration, soit par le second plat, selon le cas. Tous les autres exemplaires originaux sont filmés en commençant par la première page qui comporte une empreinte d'impression ou d'illustration et en terminant par la dernière page qui comporte une telle empreinte.

Un des symboles suivants apparaîtra sur la dernière image de chaque microfiche, selon le cas: le symbole \rightarrow signifie "A SUIVRE", le symbole ∇ signifie "FIN".

Les cartes, planches, tableaux, etc., peuvent être filmés à des taux de réduction différents. Lorsque le document est trop grand pour être reproduit en un seul cliché, il est filmé à partir de l'angle supérieur gauche, de gauche à droite, et de haut en bas, en prenant le nombre d'images nécessaire. Les diagrammes suivants illustrent la méthode.



VOTERS' LIST, 1898.

Township of Colborne.

CLERK'S CERTIFICATE.

I, F. W. McDONAGH, Clerk of the Municipality of the Township of Colborne, in the County of Huron, do hereby certify that Parts One and Three of the within List constitute a correct list for the year 1898 of all persons appearing by the last revised Assessment Roll of the said Municipality to be entitled to vote at Elections for members of the Legislative Assembly, and that Parts One and Two constitute a correct list for said year of all persons appearing on the said Roll to be entitled to vote at Municipal Elections in the said Municipality.

And I hereby call upon all electors to examine the said Lists, and if any omissions or other errors are perceived therein, to take immediate proceedings to have the said errors corrected according to law.

Dated this 27th day of September, 1898.

F. W. McDONAGH, Township Clerk, Carlow.

CERTIFICATE OF NO COMPLAINTS.

F. W. McDONAGH, Clerk of the Municipality of the Township of Colborne, having certified under his hand that no complaints respecting the List of Voters for said Municipality for the year 1898 had been received by him within thirty days after the first posting of the same, and on application of the said Clerk, I, JAMES MASSON, Esq., Judge of the County Court of the County of Huron, in pursuance of the provisions of the Ontario Voters' List Act, 1889, certify that the annexed printed List of Voters, being one of the copies received by me from the said Clerk, under Section 5 of the said Act, is the revised List of Voters for the said Municipality for the year 1898.

Given under my hand and seal, at Goderich, in the said County, this.....

..... day of 1898.

CERTIFICATE OF JUDGE.

I, JAMES MASSON, Esq., Judge of the County Court of the County of Huron, pursuant to Section 17 of the Ontario Voters' List Act, 1889, do hereby certify that the annexed is a correct copy of the List of Voters for the year 1898, received by me from the Clerk of the Municipality of the Township of Colborne, according to my revision and correction thereof, pursuant to the provisions of the said Act.

Dated at the..... of.....

in the said County, this..... day of..... 1898.

The Sheriff shall, immediately upon receipt of his copies, cause one of them to be posted up in a conspicuous place in the Court House; the Clerk of the Peace, upon receipt of his copies, shall cause one of them to be posted in a conspicuous place in his office; every Public or Separate School Head Master or Mistress shall in a like manner put up one on the door of the School House; and every Postmaster shall post up one of his copies in his Post Office.

1. 1

Com
5. 6
with

PA

3
3
3

11
18
7
21
15
17
16
13
12
10
8
11
112

53
51
48
17
52
49
50

1898.

VOTERS' LIST.

1898.

Township of Colborne.

SCHEDULE ' F POST OFFICES:

1. BENMILLER ; 2. SALTFOED ; 3. CARLOW ; 4. DUNLOP ; 5. NILE ; 6. AUBURN ;
7. GODERICH ; 8. SHELPARDTON.

POLLING SUB-DIVISION No. 1

Comprising Maitland Concession, Beaumiller Village, the Falls Reserve, Concessions 1, 2, 3 and 4 in the Eastern Division, and the following Lots, viz: 5, 6, 7 and 8 on the 1st, 2nd, 3rd and 4th Concessions in the Western Division, with Lot 9 on the 3rd Concession.

PART I.—List of Persons entitled to vote at Elections to the Legislative Assembly and Municipal Elections.

Neigh- hood No.	NAME.	Occu- tion.	No. of Lot or Part of Lot.	Conces- sion or Street.	Owner of Tenant
11	Askwith, William.....	farmer.....	pt 11	1 E D.	o m f 1
18	Allen, Joshua.....	farmer.....	pt 26 and 26	M C.	o m f 1
7	Ashton, Thomas.....	farmer.....	pt 8	3 W D.	o m f 1
21	Allen, William.....	farmer.....	S 1/2 5	3 E D.	o m f 1
15	Allen, William.....	farmer.....	12	M C.	o m f 1
17	Allen, Wesley G.....	farmer.....	12	M C.	o m f 1
16	Allen, Albert E.....	farmer.....	12	M C.	o m f 1
13	Allen, Luther.....	farmer.....	W 1/2 7	3 E D.	o m f 1
12	Allen, Richard.....	farmer.....	W 1/2 7	4 E D.	o m f 2
10	Allen, John.....	farmer.....	N 1/2 5	3 E D.	o m f 2
8	Ashton, John.....	farmer.....	pt 8	3 W D.	o m f 1
11	Allen, Walter John.....	farmer.....	N 1/2 6	3 E D.	o m f 1
112	Aken, Adam.....	farmer.....	pt 11	1 E D.	o m f 1
53	Butt, Stephen.....	farmer.....	pt 6, 7	M C.	o m f 1
51	Baer, Nathaniel.....	farmer.....	15	M C.	o m f 9
18	Blake, William.....	farmer.....	13, 11	1 E D.	o m f 1
17	Butt, Henry.....	farmer.....	pt 5 and 6	3 E D.	o m f 1
52	Baker, Richard.....	farmer.....	22	M C.	o m f 1
39	Brecknow, Charles.....	farmer.....	N pt 29	M C.	o m f 1
50	Brownlee, John.....	farmer.....	E 1/2 30	M C.	o m f 1
95	Colnson, William.....	farmer.....	11	3 E D.	o m f 2

No. on
Roll
Page

100
108

116
115
117
118
111

128
127
117
152
131
163
162
156
161
157
151
157
169
119
118
155
130
123
165
150
158
159

185
186
187
183
196
197
201
191
198

POLLING SUB-DIVISION No. 1.

No. on Roll.	Juror.	NAME.	OCCUPATION.	No. or Lot or Part of Lot	Part	Concession or Street.	Owner or Tenant	P. O.
100		Darst, William C.	farmer	pt 27, 28	M C	o m f 1	
108		Dewar, Avelubald L.	farmer	pt 1	3 E D	o m f 1	
116		Elsley, Jacob	farmer	4	2 W D	t m f 1	
115		Edmanson, A E.	farmer	E 1/2 10	4 E D	t m f 6	
117		Edward, J B.	farmer	pt 5 and 6	3 & 4 wd	o m f 2	
118		Edward, Howard	farmer	pt 5 and 6	3 & 1 wd	o m f 2	
111		Edmanson, John	farmer	E 1/2 10	4 E D	t m f	
128		Fisher, Isaac	farmer	6	1 W D	o m f 7	
127		Fisher, Joseph, jr.	farmer	6	2 W D	o m f 7	
117		Fisher, Jacob	farmer	pt 1 and 2	1 E D	t m f 7	
152		Fisher, William	farmer	11	2 E D	t m f 1	
139		Fisher, Henry S.	farmer	pt 1	1cdmby	t m f 1	
163		Fisher, Amos	farmer	3	1 E D	o m f 1	
162		Fisher, Herbert	farmer	3	2 E D	o m f 1	
156		Fisher, Charles	farmer	6	2 E D	o m f 1	
161		Fisher, Peter, jr.	farmer	31	M C	o m f 1	
157		Fisher, Richard	farmer	11	2 E D	t m f 1	
151		Fisher, Aaron	farmer	6	1 E D	o m f 1	
157		Fisher, Valentine	farmer	pt 26, 27	M C	o m f 1	
160		Foster, W. B.	farmer	19, pt 20	M C	o m f 9	
119		Flick, Jacob	farmer	E 1/2 30	M C	o m f 1	
118		Flick, Michael	farmer	pt 28, 29	M C	o m f 1	
155		Fisher, Abraham	farmer	pt 7 and 8	M C	o m f 1	
130		Fisher, Seth, jr.	farmer	7	5 E D	h m f 1	
129		Fisher, Edward J.	farmer	3, 7	2 W D	o m f 1	
165		Fisher, W. W.	farmer	8	1 E D	o m f 1	
150		Flick, John J.	farmer	28, 29	M C	o m f 1	
158		Foster, H. R.	farmer	16, 17, 18, 19, 20	M C	o m f 9	
159		Foster, O. R.	farmer	16, 17, 18, 19, 20	M C	o m f 9	
185		Gledhill, Thomas	merchant	pt 20, 21, 1, 2	2 ed. vac	o m f 1	
186		Gledhill, Jesse	Woolen Factory	pt 1	1, 2cdmby	o m f 1	
187		Gledhill, J. W.	"	pt 1	1, 2cdmby	o m f 1	
183		Good, Thomas	farmer	S 1/2 6 and 49, 10 B. V.	5 E D	t m f 1	
196		Good, William H.	farmer	pt 8, 9	3 E D	o m f 1	
197		Good, Edward	farmer	pt 10	3 E D	o m f 1	
201		Gnn, Peter	farmer	pt 28, 29	M C	o m f 1	
191		Gardner, Thomas	farmer	3 W 1/2 4	3 E D	o m f 7	
198		Ginder, Charles	farmer	14	2 E D	o m f 1	

No. on
Roll.

200
184
190
193
195

237
239
238
236
235
234
211
222
233
210
216

267
264
265
266
255
256
263
251
253
257
262

278
277
276

290
291
286
285
289

POLLING SUB-DIVISION NO. 1.

No. on Roll.	NAME.	OCCUPATIONS.	No. or Lot or Part of Lot.	Concession or Street.	Owner or Tenant.	P. O.
190	Grigg, Edward	farmer	pt 21	M C	o m f	9
184	Gledhill, A. S.	farmer	pt 20 and 21	M C	o m f	1
199	Grigg, Oliver	farmer	pt 21	M C	o m f	9
193	Gardner, Samuel	farmer	3 W 1 4	3 E D	o m f	7
195	Grainger, Benjamin	farmer	E 1 7	3 E D	t m f	
237	Hill, William	farmer	9, 9	1, 2 E D	o m f	1
239	Hedcoe, Andrew	farmer	pt F R	1 W D	o m f	1
238	Haboel, George	farmer	pt 10	M C	o m f	1
236	Holtzham, Mike	farmer	pt 11	2 E D	o m f	1
235	Hahday, Andrew	farmer	15	2 E D	o m f	1
234	Hahday, John	farmer	pt 13, 14, 15	3 E D	o m f	1
211	Hart, Samuel	farmer	pt 8	2 W D	o m f	1
222	Hart, Samuel, jr.	farmer	pt 8	2 W D	o m f	1
233	Hobson, Henry	farmer	pt 5	4 E D	o m f	1
210	Hedcoe, Samuel	farmer	pt F R	1 W D	o m f	1
216	Holtzham, Levi	farmer	B M V		bl m f	
267	Jenkins, James	farmer	5	1 W D	t m f	2
261	Jenkins, John	farmer	4	6 W D	o m f	2
265	Jenkins, Edward	farmer	5	2 W D	o m f	2
263	Jenkins, Isaac	farmer	5	2 W D	o m f	2
255	Jewell, Richard	farmer	pt 6, pt 3, 4, W 1 7	2, 3 W D	o m f	1
256	Jewell, James, sr.	farmer	pt 1	1 E D	o m f	1
263	Johns, Nathan	farmer	9, E 1 8	4 E D	o m f	1
251	Jewell, Melvin	farmer	pt 7	3 W D	o m f	1
253	Jewell, William	farmer	pt 3 and 4	2 W D	o m f	1
257	Jewell, James, jr.	farmer	pt 1	1 E D	o m f	1
262	Johns, Thomas	farmer	9, E 1 8	4 E D	o m f	1
278	Kurschinsk, Fred	farmer	pt 10	M C	o m f	1
277	Kerningham, John	farmer	B	2 E D	o m f	1
276	Kerningham, J. N.	farmer	E 1 12	2 E D	o m f	1
290	Long, James	farmer	N 1 6, pt 1 and 2	6, 2 E D	o m f	1
291	Larnie, Fred	tailor	pt 1, 2	2 E D	o m f	1
286	Long, William, sr.	farmer	E 1 8, 8	4 W D	o m f	1
285	Long, William, jr.	farmer	E 1 8	3 W D	o m f	1
289	Long, John	farmer	pt 6	4 E D	o m f	1

No on
R. H.
Luton

338
371
311
335
337
321
336
336
332
321
326
359
372
321
316
357
377
376
372
373
100
300
323
330
337
375

101
103
102

410
407
109
108
411

417
418
42
121

POLLING SUB-DIVISION NO. 1.

No on Roll.	Dist.	NAME.	Occra- tion.	No. of Lot or Part of Lot.	Corner of Street	Owner of Tenm	Ac.
338	j	Mugford, John.	farmer...	S 1/2 12	4 E D.	o m f 1
371	j	Moore, William, sr	farmer..	S 1/2 18 1/2 5	3 E D.	o m f 1
314	j	Maedel, William.	farmer....	6	B M V.	o m f 1
335	j	McCorvie, Neil.	farmer... pt 9	3 W D.	o m f 1
338	j	Moore, William	farmer... pt 5	1 E D.	t m f 1
381	j	Malloy, Nelson.	farmer... W 1/2 12	2 E D.	o m f 1
382	j	Mitchell, Samuel.	farmer... 10	2 E D.	o m f 1
336	j	McCorvie, Duncan.	farmer... pt 1	3 W D.	t m f 1
382	j	Mohring, Manuel W.	farmer... pt FR	2 W D.	o m f 1
381	j	Munnings, John.	farmer... pt 11	1 E D.	t m f 1
380	j	McClure, James.	farmer... 12	1 E D.	o m f 1
379	j	McClure, Robert.	farmer... pt 11	1 E D.	o m f 1
378	j	McClure, John.	farmer... 12	1 E D.	o m f 1
381	j	Mitchell, Emanuel.	farmer... 10	2 E D.	o m f 1
316	j	Mitchell, Albert.	farmer... pt 11	1 E D.	o m f 1
387	j	Maedel, Paul.	farmer... 8	2 E D.	o m f 1
377	j	Million, William.	farmer... W 1/2 8	3 E D.	o m f 2
376	j	McLarty, John.	farmer... E 1/2 6	4 E D.	o m f 1
372	j	Manning, Frank.	farmer... pt 2	3 E D.	o m f 1
373	j	Morris, William.	farmer... pt 3	1 E D.	o m f 7
100	j	Mew, Henry, sr.	farmer... pt 11	M C.	t m f 1
309	j	Mew, Henry, jr.	farmer... pt 10	M C.	t m f 1
383	j	Mitchel, Claude M.	farmer... pt 11	1 E D.	o m f 1
339	j	Mugford, Fred.	farmer... pt 1	4 E D.	o m f 1
337	j	Mugford, Charles.	farmer... pt 5	4 E D.	o m f 1
375	j	Moore, Renaud.	farmer... pt 5, 7, 8	3&4 ED	o m f 1
101	j	Naegel, Joseph.	farmer... N pt 13	3 E D.	o m f 1
103	j	Naegel, Frank.	farmer... W pt 13	3 E D.	o m f 1
402	j	Newell, George.	farmer...	1 E D.	o m f 1
410	j	Oke, Charles.	farmer... N 1/2 8	3 W D.	o m f 1
107	j	Oke, William.	farmer... pt 1, 2	3 E D.	o m f 1
109	j	Ohler, William.	farmer... N W pt 29	M C.	o m f 1
408	j	Ohler, Michael.	farmer... N 1/2 30	M C.	o m f 1
411	j	Olivant, Rev. Ed.	minister... pt F S	1 W D.	o m f 1
417	j	Pfammer, Michael.	farmer... p. 1, 2	1, 2 E D.	o m f 1
418	j	Pennington, Thos.	farmer... 11	M C.	t m f 9
42	j	Pfammer, John.	farmer... pt 28, 22	M C.	o m f 1
421	j	Pfammer, George.	farmer... pt 28	M C.	o m f 1

434

434

477

477

477

470

470

477

468

477

477

478

480

521

521

519

551

551

551

541

541

551

551

551

551

571

571

571

POLLING SUB-DIVISION No. 1.

No. on Roll, Junior.	NAME.	OCCUPATION.	No. of Lot or Part or Lot.	Conces- sion or Street.	Owner or Tenant.
431	Rosier, John	farmer.	pt 4, 5, 6, 7, 8.	1ed me	o m f 1
434	Rowden, Richard	farmer.	pt 3	1 E D.	o m f 1
477	Strachan, William	farmer	2, N 1/2 5	2 E D.	o m f 1
472	Stevens, John	farmer	pt 25, 26	M C.	o m f 1
474	Snyder, Jesse	farmer	pt 4, 5	1 E D.	o m f 1
470	Schwanz, Michael	farmer	11	M C.	o m f 1
476	Snyder, Levy	farmer	24	M C.	o m f 9
471	Schwanz, John G	farmer	11	M C.	o m f 1
469	Strachan, Robert	farmer	W 1/2 10	5 E D.	o m f 2
473	Stevens, William	farmer	pt 25, 26	M C.	o m f 1
475	Snyder, Henry	farmer	pt 4 and 5.	1 E D.	o m f 1
479	Stewart, George	farmer	2	1 W D.	o m f 1
480	Stewart, Joseph L.	gardner	pt 11 R.	1 W D.	o m f 1
520	Vanston, William	farmer	S 1/2 6, pt 7	3ed 1wd	o m f 1
521	Vanston, C. A.	farmer	S 1/2 6	3 E D.	o m f 1
519	Vanston, Ambrose	farmer	S 1/2 6	3 E D.	o m f 1
551	Walters, Charles	farmer	S 1/2 1, 2	3 E D.	o m f 1
551	Walters, William	farmer	pt 5	4 E D.	o m f 1
550	Walters, Nathan	farmer	E 4	4 E D.	o m f 1
547	Walters, Joshua	farmer	E 4	3 E D.	o m f 1
549	Walters, Eli	farmer	E 4	3 E D.	o m f 1
552	Walters, Richard J.	farmer	7	2 E D.	o m f 1
553	Walters, Clarence	farmer	S 1/2 1, 2	4 E D.	o m f 1
551	Walters, Wm, jr.	farmer	N 1/2 5, 6	4 E D.	o m f 2
558	White, James	farmer	6	M C.	h m f 1
574	Young, Henry	farmer	13	M C.	o m f 4
575	Young, Richard	farmer	pt 5, 6	4 W D.	o m f 2
573	Young, W. H.	farmer	pt 23	M C.	o m f 9

Section

153

232
245

203

384
343
396

405

190
189
178

548

271

PART II.--Persons Entitled to Vote at Municipal Elections only.

No. on Roll. In con.	NAME	Occupation.	No. of Lot or Part of Lot	Conces- sion or Street.	Owner or Te ant	P.O.
153	Fisher, Elizabeth	widow	6, 7, 8	1 E D	fr h	1
232	Hobson, Ellen	widow	W pt 3	4 E D	owner	1
245	Hays, Thos. E		F R	1 E D	tenant	15
293	Levy, Ann	widow	pt 9	3 E D	owner	16
384	Malloy, Margaret	farmer	10	1 E D	owner	1
343	Maedel, Wilhelmina	farmer	5, 7	B M V	owner	1
396	Moore, Joshua	farmer	pt 1 and 5	1 E D	owner	1
405	Nott, Nicholas	farmer	pt 1 and 2	4 E D	owner	7
490	Snyder, John	farmer	24	M C	owner	14
489	Sowerby, Wm	farmer	8	1 W D	owner	7
478	Stewart, Mrs	farmer	pt F R	1 W D	owner	1
548	Walters, Mrs	farmer	4	3 E D	owner	1

Additional Post Offices--10, London ; 11, Mitchell ; 12, Toronto ; 13, Belgrave ; 14, Clinton ; 15, Seaforth ; 16, Walkerton.

PART III--Persons Entitled to Vote at Elections for the Legislative Assembly Only.

NONE.

PAR

No. 1
No. 2

19
4
5
20

29
33
34
37
28
32
54
30
31

02
01
00
55
64
67
02
02
03
04

0
0
0
10
10

POLLING SUB-DIVISION No. 2.

Comprising Blocks A, B, C, D, E and G; also Lots 1, 2, 3 and 4, in the 1st, 2nd, 3rd and 4th Concessions in the Western Division.

PART I.—List of Persons entitled to vote at Elections to the Legislative Assembly and Municipal Elections.

No. of Reg. Juror.	NAME.	OCCUPA- TION.	NO. OF LOT OR PART OF LOT.	CONCES- SION OR STREET.	Owner or Tenant	P. O.
19	Adams, David	farmer	pt 3, 4	1 W D.	o m f	7
4	Allen, Anthony	farmer	pt block B.	1 r e & w	o m f	4
5	Allen, Frank	farmer	pt block B.	1 r e & w	o m f	4
20	Adams, James	farmer	pt 34	1 W D.	o m f	7
29	Bissett, Samuel	farmer	5, 1	6, 4 W D	o m f	3
33	Buchanan, Allen	farmer	pt 1 and 2	1 W D.	o m f	7
34	Buchanan, James G.	farmer	pt 1 and 2	1 W D.	o m f	7
37	Barker, John H.	farmer	pt block B.	L R W.	o m f	4
28	Boxall, John	farmer	59	M V.	t m f	2
32	Beck, Joseph	farmer	pt B C, 29, 41, 42.	B H M V.	o m f	2
54	Bogue, Alexander	farmer	W 15, S W pt 6.	pt 43 W D.	o m f	7
30	Bradford, George	farmer	pt 28	M V.	t m f	2
31	Bradford, Henry M.	blacksm th	pt 28	S V.	t m f	2
62	Clark, William	farmer	pt block C.	S V.	t m f	2
61	Cornell, William	farmer	pt block C.	M V.	o m f	2
60	Cornell, Martin	farmer	pt block C.	M V.	o m f	2
55	Cark, John	farmer	pt block G.	7 W D.	t m f	4
64	Chisholm, Charles	farmer	pt block C.	M V.	o m f	4
67	Carter, David	farmer	43, 44	S V.	t m f	4
92	Clark, Alex.	farmer	pt block C.	S V.	t m f	2
93	Clark, W. J.	farmer	pt block C.	S V.	t m f	2
65	Chisholm, Austin	farmer	pt block C.	S V.	o m f	2
94	Clark, David	farmer	pt block C.	S V.	t m f	2
99	Davison, James	farmer	E pt 3, pt 4.	3 W D	o m f	7
97	Dodd, Alf.	farmer	pt 1	3 W D.	o m f	2
96	Donaldson, Alex.	farmer	70, 71, 72, 73, 74, 75.	M V.	o m f	2
104	Dean, John	farmer	pt block C.	M V.	o m f	2
105	Dodd, Benjamin	farmer	pt block C.	1 W D.	t m f	2

220

120
160
120
110

170
170
170
170
170

200
220
220
200
210

240

260
270

300
300
380
310
310
310

POLLING SUB-DIVISION NO. 2.

No. CH Ro. I.	Jurat.	NAME.	OCCUPA- TION.	No. of Lot or PART OF Lot.	Conces- sion of Street.	Owner or Tenant	P.O.
120		Fritzley, Richard	laborer	pt block C	1 E D.	o m f	2
164		Fritzley, Jonathan	laborer	pt 1	M V	t m f	2
126		Fulford, Robert	merchant	pt block B	L R W	t m f	4
119		Fritzley, R. W.	laborer	14	S V	o m f	2
176		Goldthorpe, Albert	farmer	1, 2	3 W D.	o m f	2
170	j	Goldthorpe, J. T.	farmer	pt block E	M V	o m f	2
175		Gibbs, Richard	laborer	pt 2	M V	t m f	2
171	j	Greer, Robert sr.	laborer	13	M V	o m f	2
173		Gilders, Thomas	laborer	67, 68	M V	o m f	2
172		Greer, Robert jr	laborer	13	S V	o m f	3
206		Henderson, Alex.	laborer	91, 92	M V	o m f	2
220	j	Haughton, T. A.	farmer	pt block G		o m f	2
221		Horney, James	farmer	pt block C	2 W D.	t m f	2
207		Hellton, Fred		pt 1	1 W D.	t m f	3
219		Hantheck, D. F.		pt B A	L R W	o m f	7
248	j	Jones James	farmer	pt 1, 2	2 W D.	o m f	3
269		Kennedy, John R.		5	S V	t m f	2
279		Kuntz, Jacob	brewer	pt block C	Brew'y.	o m f	3
393		Maskell, Edward		pt 7	8 W D.	t m f	
390	j	McKinnon, Donald	farmer	pt 4	1, 2 W D.	o m f	2
389		McKinnon, Angus	farmer	pt 7	1 W D.	o m f	2
316	j	McAvoy, Owen	farmer	pt 1	1 W D.	o m f	2
315		McQuarrie, John	farmer	pt 1	1 W D.	o m f	2
314	j	McLean, James	farmer	12, pt 8	M V	o m f	2

30
31
32

310
331
315
332
333
309
320
302
312
311
333
304

100

410
412
413
414

428

403
445
483
184
402
441
412
417
440
438
441

POLLING SUB-DIVISION NO. 2.

10

No.	Name.	Occupation.	No. of Lot or Part of Lot.	Concession or Street.	Owner or Tenant.	P.O.
310	McEwan, Peter	farmer	61, 62, 63	M V	o m f	2
331	Morris, William	farmer	pt block B		o m f	2
313	McLaren, Daniel	builder	pt block B	3 W D	o m f	3
332	Morris, Charles		pt block B		o m f	2
330	Morris, Herbert	farmer	pt block B	L R W	t m f	2
309	McIntyre, John	farmer	E ½ 61, 65	M V	o m f	2
326	McDonald, A. C	farmer	pt block D	L R E	o m f	4
302	Maskell, Edward	farmer	pt 3, 4	2 W D	t m f	7
312	McEwan, Peter, jr	manager	pt block C	M V	t m f	2
311	Mason, Benjamin	hotel	3	S V	t m f	2
333	McNeil, Arthur		pt block D	7 W D	o m f	3
304	Mingford, Albert	farmer	W ½ 5, pt 6	3 W D	o m f	3
106	Oke, John	farmer	pt block D	L R E	t m f	4
416	Potts, William	farmer	4	M V	o m f	2
412	Patton, James	farmer	pt block C		o m f	4
413	Patton, John	farmer	pt block F	7 W D	o m f	7
419	Plant, Peter	farmer	pt 1	1 W D	o m f	2
428	Robertson, P. A	farmer	W ½ 3, 3	3, 4 w d	o m f	7
493	Symonds, George	cooper	41, 42	S V	o m f	2
445	Strangham, Edward jr	farmer	W ½ 9, pt 1, 2	2 W D	o m f	2
483	Silleb, Henry	farmer	pt block C		o m f	2
484	Simmonds, Robert	farmer	6, 7, 8	M V	o m f	2
492	Shultz, Arthur	farmer	pt 13, block C	M V	o m f	2
441	Sands, Archibald	farmer	pt block C, 1, 2, 3	1 W D	o m f	2
442	Sands, James	farmer	pt block C, 1, 2, 3	1 W D	o m f	2
443	Sands, John	farmer	pt block C, 1, 2, 3	1 W D	o m f	2
440	Symonds, Ely	laborer	31, 32, 35	S V	o m f	2
439	Symonds, Wm	cooper	31, 32, 35	S V	o m f	2
441	Symonds, Charles	hotel	1	S V	t m f	2

No. on
Roll

507

525
513
557
512
526
527

570
569

6

68
63

106
107

174

201

334
327
320
328

POLLING SUB-DIVISION No 2.

11

No. on Roll.	NAME.	OCCUPATION.	No. of Lot or Part of Lot.	Consent of Street.	Owner or Tenant.	P. O.
507	Tieborne, Thomas	farmer	pt block B	LRW	o m f	1
525	Walters, John	farmer	2	MV	o m f	2
543	Wilson, Albert	farmer	pt A B		hm f	2
557	Wilson, Joseph	farmer	pt 4	W D	o m f	2
512	Webb, John	laborer	pt block B	SV	o m f	2
526	Whitmore, Edward	laborer	8	SV	t m f	2
527	Whitmore, George	laborer	8	SV	t m f	2
570	Young, Robert	laborer	pt block B		hm f	7
569	Young, James	farmer	pt block B	7 E D	o m f	4

PART II.--Persons Entitled to Vote at Municipal Elections only.

6	Attrill, Mrs. H. Y.		pt block B, A B C		owner	7
66	Campbell, George		26, 27	MV	owner	7
63	Chisholm, Jessie		pt block C		owner	2
106	Duff, Robert		pt block C		owner	7
107	Dunmage, Mary Ann		pt block B		O [Pt. A	
171	Goldthorpe, Mrs.		pt 1, 38, 39 pt B C	SV	owner	2
291	Lasham, William		5	SV	owner	7
334	McNeil, Barbara	farmer	pt block D	3,3,7 wd	owner	2
327	Morris, R. D.	farmer	pt block B	LRW	o [ma	
329	Morris, Mary		pt block D	LR E	owner	2
328	Morris, Edwm J.		pt block B	LRW	o [ma	

No. on
leaf
of vol.

427

~~433~~

~~432~~

~~431~~

511

P

522

and
1, 2,
in the

PA

9
2
3

27
22
21
24
33
38
24
27

POLLING SUB-DIVISION NO. 2.

12

No. on Poll- book.	Name.	Occu- sion.	No. of Lot or Part of Lot.	Conces- sion or Street.	Owner or Tenant	Σ
427	Robertson, John.....		3	1 W D.	owner	7
488	Smith, Abraham.....	tailor	pt 1, pt block A B.....	h w, lsc	owner	7
488	Symonds, Mrs.....		31, 32, 35.....	h v.....	owner	7
482	Stewart, James.....	gentleman	pt block C.....	h v.....	owner	7
491	Stranghan, Mrs.....	widow	pt 8.....	h v.....	owner	12
511	Webb, Ellen.....		pt block B.....	M V.....	owner	2

PART III--Persons Entitled to Vote at Elections for the Legislative Assembly Only.

522	Vaustone, Richard.....	laborer.	1 and 2.....	3 W D. M F.		
-----	------------------------	----------	--------------	-------------	--	--

POLLING SUB-DIVISION NO. 3.

Comprising Block F, the 5th, 6th, 7th, 8th, 9th and 10th Concessions (save and except Lots 9, 10 and 11 on the 9th and 10th Concessions, W. D.); also Lots 1, 2, 3 and 4, on the 11th Concession, and Lots 2, 3 and 4 on the 12th Concession, in the Eastern and Western Divisions.

PART I.—List of Persons entitled to vote at Elections to the Legislative Assembly and Municipal Elections.

9	Allen, Samuel.....	farmer	E $\frac{1}{2}$ 1.....	5 W D.	o m f	3
2	Allen, Charles.....	farmer	W $\frac{1}{2}$ 1.....	5 W D.	o m f	3
3	Allen, Henry.....	farmer	W $\frac{1}{2}$ 1.....	5 W D.	o m f	3
27	Bean, George.....	farmer	pt 1.....	7 E D.	t m f	3
22	Bell, Joseph.....	farmer	2.....	7 W D.	o m f	3
21	Bean, Robert.....	farmer	6.....	8 W D.	t m f	4
22	Barkwell, William.....	farmer	3.....	8 W D.	o m f	3
36	Burns, Thomas.....	farmer	6.....	7 E D.	o m f	3
38	Brownlee, Wilson.....	farmer	9.....	6 E D.	t m f	6
29	Bissett, Samuel.....	farmer	N $\frac{1}{2}$ 1, N $\frac{1}{2}$ 2.....	4 W D.	o m f	3
25	Boggs, Nathaniel.....	hotel	pt 1.....	8 E D.	o m f	3
37	Buchanan, John.....		9.....	7 E D.	o m f	3

No. in
R. 10.
of 1000.

59
58
72
68
55
91
90
89
70
64
57
56
71

98
111
100
101

112
113

121
121
122
130
135
137
131
131
133
122
123
133

16
17
18
17

POLLING SUB-DIVISION No. 3.

No. in Block.	Name.	Occu- tion.	No. of Lot or Part of Lot.	Conces- sion or Street.	Owner or Tenant.	P. C.
59	Carroll, Thomas	farmer	5	7 W D	o m f	3
58	Campbell, Thomas	farmer	4	9 W D	o m f	3
72	Cunningham, William	farmer	8	8 E D	o m f	3
68	Cunningham, David	farmer	2	8 E D	o m f	3
55	Clark, John	farmer	N 1/2 9	8 W D	o m f	3
91	Clark, William	farmer	pt 1	10 W D	o m f	5
90	Cartelon, John	farmer	pt 1	11 W D	o m f	5
89	Corey, William	farmer	pt 1	11 W E	o m f	5
70	Curry, George C.	farmer	1, 5	10 E D	o m f	5
63	Curry, Isaac	farmer	1, 5	10 E D	o m f	5
57	Clark, James	farmer	pt 9	8 W D	o m f	4
56	Clark, George F.	farmer	pt 9	8 W D	o m f	4
71	Curry, George Jr.	farmer	1, 5	11 W D	o m f	5
98	Dobbie, Joseph	farmer	pt 6	7 E D	o m f	6
111	Davison, John	farmer	pt 16	7 E D	o m f	6
100	Dustow, John	farmer	7	12 W D	o m f	5
101	Dustow, James	farmer	pt 3	12 W D	o m f	5
112	Elliott, Thomas D.	laborer	pt 1	11 W D	o m f	5
113	Elliott, James	laborer	pt 7	11 W D	o m f	5
121	Ferguson, William L.	farmer	W 1/2 2	10 W D	o m f	3
121	Ferguson, George J.	farmer	3	7 E D	o m f	3
122	Ferguson, Archibald B.	farmer	3	7 E D	o m f	3
136	Fagen, Thomas	farmer	3, 4	6 E D	o m f	3
135	Fagen, James	farmer	3, 4	6 E D	o m f	3
137	Fagen, John	farmer	3, 4	6 E D	o m f	3
134	Fowler, William J.	farmer	7, 6	6 E D	o m f	2
131	Fowler, John	farmer	7, 6	5, 6 E D	t m f	6
132	Fowler, Joseph	farmer	7, 6	10, W 1/2 11	o m f	6
123	Ferguson, Albert E.	farmer	3	6 E D	o m f	3
125	Fisher, J. P.	farmer	pt 8	7 E D	o m f	3
138	Feagam, William	farmer	12	8 E D	t m f	3
169	Glenn, James	farmer	4	7 W D	o m f	3
179	Glenn, George	farmer	12 3/4	9 E D	o m f	3
180	Glenn, Robert	farmer	12 3/4	9 E D	o m f	3
178	Glenn, Alexander	farmer	3 1/2 5	9 E D	o m f	3

No. on
Roll.

167
168
182
177
166

211
205
213
223
213
212
215
208
229
210
209
230
231
211
216

249
217
261
260
251
259
268

279
273
271
275

281
280
282

POLLING SUB DIVISION No. 3.

No. on Roll.	Juror.	NAME.	OCCUPATION.	NO. OF LOT OR PART OF LOT.	CONCESSION OR STREET.	Owner or Tenant.	P. O.
167		Gallagher, John.....	farmer...	3	7 W D.	o m f	3
168		Green, Andrew.....	farmer...	N 1/8	8 W D.	o m f	4
182		Gilders, Fletcher.....	farmer...	pt 8	6 E D.	o m f	2
177		Glenn, William.....	farmer...	pt 6	8 E D.	o m f	3
166		Gallagher, James.....	farmer...	E 1/3	8 W D.	o m f	3
214		Howe t, Thomas.....	farmer...	14 and 15.	7 W D.	o m f	6
205		Howell, William N.....	farmer...	2	8 W D.	o m f	3
213		Hogan, Edward.....	farmer...	part	7 W D.	o m f	3
223		Hamilton, William J.....	farmer...	11	5 E D.	o m f	6
213		Howett, James sr.....	farmer...	14, 15	7 E D.	o m f	6
212		Howett, James jr.....	farmer...	14, 15	7 E D.	o m f	6
215		Hamilton, Thomas sr.....	farmer...	4	7 E D.	o m f	3
208		Hamilton, Thomas jr.....	farmer...	7	7 E D.	o m f	3
229		Hetherington, Joseph.....	farmer...	10	12 W D.	o m f	5
210		Hutson, James.....	farmer...	W 1/7	9 E D.	o m f	5
209		Hutson, Robert.....	farmer...	6	10 E D.	o m f	5
230		Hutchins, William.....	laborer...	pt 1	11 E D.	o m f	5
231		Hutchins, Mark.....	farmer...	pt 1	11 W E.	o m f	5
211		Hardy, David.....	farmer...	pt 11	8 E D.	o m f	5
216		Hamilton, David.....	farmer...	pt 11	8 E D.	o m f	6
219		Jones, Henry.....	farmer...	N pt 13	8 E D.	o m f	6
217		Jones, William.....	farmer...	pt E, pt block G	7 W D.	o m f	3
261		Jones, William O.....	farmer...	1	9 W D.	o m f	5
260		Jones, Owen.....	farmer...	E 1/2	10 W D.	o m f	5
251		Jones, Richard.....	farmer...	pt 13	8 E D.	o m f	6
259		Johnston, Thomas M.....	farmer...	5	11 W D.	o m f	5
268		Johnston, Andrew.....	farmer...	7	7 E D.	o m f	3
279	j	Kmetz, Jacob.....	brewer...	pt 16	7 E D.	o m f	6
273		Kerr, William.....	farmer...	3	12 W D.	o m f	5
271		Kirkpatrick, Robert.....	farmer...	pt 1	11 W D.	o m f	5
275	j	Kennedy, James.....	farmer...	pt 1	11 W D.	o m f	5
281	j	Linfield, John P.....	farmer...	7	9.	t m f	4
280	j	Linfield, Samuel.....	farmer...	7	9 W D.	t m f	4
282		Long, Matthew.....	laborer...	N 1/6	6 E D.	h m f	3

No. on
Vol.

295
292

307
306
305
318
308
312
311
302
357
358
360
297
296
299
317
321
321
320
370
322
363
368
369
360
367
366
365
359
298
362
340
361
392
301
395

401

413
412

POLLING SUB-DIVISION NO. 3.

15

No. on Roll.	Name.	Occupation.	No. of Lot or Part of Lot.	Concession or Street.	Owner or Tenant	P.O.
295	Long, Charles.....	laborer.....	pt 1.....	7 E D.....	t m f 3	
292	Levy, John.....		pt 6.....	8 E D.....	t m f 3	
307	McDonagh, Frank W.....	farmer.....	1.....	7 W D.....	o m t 3	
307	McBride, James.....	farmer.....	1.....	8 E D.....	o m f 3	
306	McDonagh, J. A.....	farmer.....	1, pt 1.....	8 W D.....	o m f 3	
303	Morris, George.....	farmer.....	6.....	10 W D.....	o m f 7	
318	McPhee, William.....	farmer.....	6.....	9 E D.....	o m f 3	
308	Mitchell, Thomas.....	farmer.....	1.....	6 W D.....	o m f 3	
312	Mitchel, James.....	farmer.....	8 1/2.....	6 E D.....	o m f 3	
311	Million, Andrew.....	farmer.....	10, pt 16.....	67 E D.....	o m f 3	
302	Morris, Henry J.....	farmer.....	6.....	9 W D.....	o m f 7	
357	May, George.....	farmer.....	2.....	12 W D.....	o m f 5	
358	McVittie, William.....	farmer.....	2.....	11 E D.....	o m f 5	
360	McLwayne, Robert.....	farmer.....	pt 1.....	11 W D.....	o m f 5	
297	McPhee, George.....	farmer.....	pt 8.....	8 W D.....	o m f 5	
293	McMillan, Robert.....	farmer.....	pt block F.....	7 W D.....	o m f 4	
299	McHardy, John.....	farmer.....	1.....	9 E D.....	o m f 4	
317	McPhee, Charles.....	farmer.....	N 1/2 5, N W pt 6.....	9 E D.....	o m f 5	
321	McPhee, John.....	farmer.....	9, 10.....	9 E D.....	o m f 5	
321	McPhee, Thomas.....	farmer.....	W 1/2 11, 9.....	8 E D.....	o m f 5	
320	McPhee, Daniel.....	farmer.....	8.....	9 E D.....	o m f 5	
370	McIntyre, William.....	farmer.....	3.....	10 W D.....	o m f 5	
322	McLwain, David.....	farmer.....	E 1/2 7.....	9 E D.....	o m f 5	
363	Morrow, Richard.....	farmer.....	pt 1.....	11 E D.....	t m f 5	
368	McIntyre, Frank.....	farmer.....	3.....	10 W D.....	o m f 5	
369	McIntyre, George.....	farmer.....	3.....	10 W D.....	o m f 5	
300	McNeven, John, sr.....	farmer.....	pt 9.....	9 W D.....	hh m f 5	
367	McHardy, Charles.....	farmer.....	4.....	10 W D.....	o m f 7	
366	McKnight, William.....	farmer.....	4.....	12 W D.....	o m f 7	
365	McKnight, James.....	farmer.....	4.....	12 W D.....	o m f 7	
359	Matthews, Samuel H.....	farmer.....	E pt 4.....	11 W D.....	o m t 7	
298	McHardy, James.....	farmer.....	1.....	9 E D.....	o m f 7	
362	Moreland, James H.....	farmer.....	pt 1.....	11 W D.....	t m f 5	
340	Millan, Edward.....	farmer.....	W 1/2 9.....	5 E D.....	o m f 2	
361	Moreland, Hugh.....	farmer.....	pt 1.....	11 E D.....	t m f 5	
392	Maskell, Edward.....	farmer.....	pt 7.....	8 W D.....	t m f 2	
301	McNeven, Joseph.....	laborer.....	pt 9.....	9 W D.....	t m f 5	
395	Manning, James.....	laborer.....	pt 4.....	8 W D.....	t m f 3	
401	Neaves, William.....	farmer.....	pt 16.....	7 E D.....	o m f 6	
413	Patton, John.....	farmer.....	pt B E.....	7 W D.....	o m f 7	
412	Patton, James.....	farmer.....	pt B E.....	7 W D.....	o m f 4	

No. on
Ref.

415
422
414

426
427
430
432
429
425

437
436
469
453
454
452
447
449
448
464
446
463
465
466
467
468
486
435
487
517

512 j
511
497
495
513 j
514
503
508
501
496
500

POLLING SUB-DIVISION No. 3.

No. on Roll.	Jurat.	NAME.	OCCUPATION.	No OF LOT OR PART OF LOT.	Concession or Strcer.	Owner or Tenant	P. O.
415	j	Porter, W. C.	farmer	7, E 1/2 8	10 W D	o m f	4 7
422		Pring, Rev.	minister	pt 1	11 W D	hh mf	5 7
414		Potter, Samuel	laborer	pt 7, 8	10 W D	t m f	7
426	j	Robertson, Alex.	farmer	2	6 W D.	o m f	3
427		Robertson, John	farmer	E 1/2 15	6 E D.	o m f	6
430		Robertson, William	farmer	W 1/2 15	6 E D.	o m f	6
432		Robertson, Thomas	farmer	12	7 E D.	o m f	6
429	j	Ryan, Richard	farmer	E 1/2 2	10 D W	o m f	5
425		Robertson, Charles M.	farmer	Hall and 2	7 E D.	o m f	3
437		Smith, Wilham B.	B S	pt 1	7 E D.	o m f	3
436		Sallows, Thomas	farmer	5	9 W D.	o m f	7
469		Straughan, Robert	farmer	40, W 1/2 10, pt 11, 12	5, 4 E D	o m f	2
453		Straughan, Edward, sr	farmer	W 1/2 12	6 E D.	o m f	6
454		Straughan, George	farmer	E 1/2 11	6 E D.	o m f	6
452		Straughan, James	farmer	E 1/2 12	6 E D.	o m f	6
447		Symington, John	farmer	15, 16 pt 17	7 E D.	o m f	6
449		Symington, William	farmer	N 1/2 17	7 E D.	o m f	6
448		Symington, James	farmer	14	8 E D.	o m f	6
464		Smith, Albert	farmer	pt 1	11 W D	o m f	5
446		Sterling, Alex	farmer	2	7 E D.	o m f	3
463		Stewart, Charles	farmer	3	11 W D	o m f	5
465		Sheppard, George	farmer	1	10 E D.	o m f	5
466		Sheppard, Thos. G.	farmer	1	10 E D.	o m f	5
467		Sheppard, Alex. P.	farmer	1	11 E D.	o m f	5
468		Sheppard, Samuel	farmer	5	12 W D	o m f	5
486		Shields, Alex	farmer	pt 5	10 E D.	o m f	5
435		Somersall, R. H.	farmer	pt 8	8 W D.	o m f	3
487		Shields, Thomas	laborer	pt 5	10 E D.	o m f	5
517		Stevens, Samuel	laborer	pt 7, 8	6 E D.	t m f	3
512	j	Tiffin, John, sr	farmer	3	9 W D.	o m f	5
511		Tiffin, John, jr	farmer	3	9 W D.	fs m f	5
497		Treble, C. W.	farmer	E 1/2 4, E 1/2 5	5 E D.	o m f	3
495		Treble, John	farmer	N 1/2 1	6 E D.	o m f	3
513	j	Tabb, James	farmer	13, 14 pt 8	6 E D.	t m f	6
514		Tabb, William J.	farmer	13, 14	6 E D.	t m f	6
503		Tewsley, Harry	farmer	5	8 E D.	o m f	3
508		Tabb, Thomas H.	farmer	13, 14	6 E D.	t m f	6
501		Tewsley, Joseph	farmer	5	8 E D.	o m f	3
496		Treble, Charles	farmer	E 1/2 5	5 E D.	o m f	3
500		Tyndall, Milton	farmer	3	8 E D.	o m f	3

No. on
Page

51
51

53
53
52
52
52
53
53
52
53
53
54

56
56
56
56
56
56
56
56
56
56
56

18

25

31
37
38

POLLING SUB-DIVISION NO. 3.

No. on Roll.	Major.	NAME.	Occupations.	No. of Lot or PART of Lot.	Concession or Street.	Owner or Tenant	P. O.
516		Vanstone, Charles	farmer.	N pt 7	6 E D.	o m f	7
515		Varoo, John A. S.	farmer.	5	8 W D	o m f	3
555		Walter, Charles A.	farmer.	W $\frac{1}{2}$ 4, S $\frac{1}{2}$ 1, S $\frac{1}{2}$ 15	6 E D.	o m f	2
531		Wilson, David.	farmer.	pt 16	7 E D.	o m f	6
523		Walter, J. A.	farmer.	2	5 W D.	o m f	2
524		Walter, Wm. jr.	farmer.	N $\frac{1}{2}$ 5, 6	4 W D.	o m f	2
528		Watson, William	farmer.	pt 11	8 E D.	o m f	5
536		Wilson, John	farmer.	E $\frac{1}{2}$ 7	9 E D.	o m f	5
534		Williams, R. B. H.	farmer.	S $\frac{1}{2}$ 9	8 W D.	o m f	4
529		Windmill, James	farmer.	12	8 E D.	t m f	6
530		Windmill, Oscar	farmer.	12	8 E D.	t m f	6
532		Wilson, James	farmer.	pt 16	7 E D.	o m f	6
546		Willis, David	farmer.	pt 3	12 W D	o m f	5
568		Young, William	farmer.	10, 11 block G	7 W D.	o m f	4
565		Young, Gordon sr.	farmer.	9	7 E D.	o m f	3
563		Young, Gordon jr.	farmer.	10	7 E D.	o m f	3
564		Young, John	farmer.	10	7 E D.	o m f	
567		Young, Roderick M.	farmer.	7	8 E D.	o m f	3
561		Young, Alex. jr.	farmer.	5, pt 6	8, 7 E D	o m f	3
560		Young, William	farmer.	4, pt 6	8 E D.	o m f	3
572		Young, Alex. W.	farmer.	N $\frac{1}{2}$ 1, E $\frac{1}{2}$ 2	10 W D	o m f	5
569		Young, James	farmer.	11, pt block E	4 W D.	o m f	4
559		Young, Andrew A.	farmer.	8, 4, 3	5ed, 4, 6wd	o b. f	3
562		Youngt hit, Eckert	farmer.	pt 16	7 E D.	o m f	6

PART II.--Persons Entitled to Vote at Municipal Elections only.

1	Allen, Mrs. R.	pt 1	5 W D.	owner	
133	Fowler, Margaret				
250	Jones, Hannah	N pt 13	8 E D.	owner	5
319	McPhee, Almira	6	9 E D.	owner	3
371	McIntyre, W. J.	W $\frac{1}{2}$ 2	9 W D.	owner	6
361	Morrow, William	pt 11	11 W D	owner	7

March
April
June

185 Stitt, M
191 Sallow

499 Tinda
502 Tows

566 You

PART

63 B
26 L

579 C

323

C
Baird
Son
on 1
Wes

PA

POLLING SUB DIVISION NO. 3

No. on No. of Block, Corner.	NAME.	Occu- pation.	No. of Lot or of Lot.	PART	Conces- sion or Street.	Owner or Tenant	P.C.
185	Stitt, Mary		pt 16		7 E D.	owner	6
191	Sallows, Frank		5		10 W D.	owner	6
499	Tindal, Mary Jane		3		8 E D.	owner	3
502	Tewsley, Margaret		W 1/4		7 E D.	owner	3
566	Young, Mrs. W.		pt 8		8 E D.	owner	3

PART III---Persons Entitled to Vote at Elections for the Legislative Assembly Only.

63	Buchanan, John		5		7 E D.	m f	3
26	Foggs, James		pt 1		8 E D.	m f	3
579	Curtis, —	teacher				m f	
323	Mills, William		pt B		8 E D.	m f	7

POLLING SUB DIVISION NO. 4

Comprising the Lake Road East and West, and Lake Shore from Lot 1 to Boundary Line; also the 11th, 12th, 13th and 14th Concessions, Western Division (save and except Lots 1, 2, 3, and 4, 11th Concession and Lots 2, 3 and 4 on the 12th Concession; also Lots 9, 10 and 11 on the 9th and 10th Concessions, Western Division.)

PART I. List of Persons entitled to vote at Elections to the Legislative Assembly and Municipal Elections.

5	Allen, Frank	farmer	pt 1, 1 pt block B		11 wd, 10 m f	4
4	Allen, Anthony	farmer	pt 1, 1 pt block B		11 wd, 10 m f	4
11	Bogie, Robert	farmer	pt B		10 wd, 10 m f	8
10	Bogie, Andrew	farmer	pt B		10 wd, 10 m f	8
16	Bogie, Wm. G.	farmer	pt 9		10 wd, 10 m f	8
13	Brindley, William	farmer	pts 18 19		10 wd, 10 m f	8

No. on
Page
Name

N.Y.

12 | Bachelor
45 | Bogie, D
39 | Bogie, W
54 | Burrows

121 | Clark
122 | Chi-sho
123 | Chi-sho
124 | Chi-sho
125 | Cook
126 | Carno
127 | Calbo
128 | Cant
129 | Camu
130 | Clut
131 | Cam
132 | Car
133 | Chi
134 | Cu
135 | Co
136 | C
137 | Ch

103 |
102 |
110 |

111
112
110
111
113
115
110

POLLING SUBDIVISION No. 1.

No. on Roll.	NAME.	OCCUPATION.	No. of Lot or of Lot.	PART.	CONCESSION OR STREET.	Owner or Tenant.
12	Bastler, Joseph	farmer	pt 11, N 13			L.R.W. o m f 3
45	Bogue, David C.	farmer	N 9 and 10			11 W D o m f 3
39	Bogue, Wm. G.	farmer	15			L.R.W. o m f 3
51	Burrows, Wm.	farmer	pt of 17			L.R.W. o m f 3
57	Clark, James	farmer	9			9 W D o m f 4
58	Chisholm, Hugh	farmer	6			L.S.C. o m f 4
59	Chisholm, James	farmer	10			9 W D o m f 4
60	Chisholm, John	farmer	7			L.R.E. o m f 4
61	Cook, Joseph	farmer	pt 8			12 W D o m f 4
62	Carney, Daniel	farmer	pt 15			L.R.E. o m f 3
63	Culbert, George	farmer	pt 15			11 W D o m f 3
64	Cantwell, John	farmer	11			L.R.E. o m f 4
65	Campbell, James	farmer	B, 11			L.R.W. o m f 4
66	Carney, Richard	farmer	1			L.R.E. o m f 4
67	Clinton, Alex. H.	farmer	pt 2			L.S.C. o m f 4
68	Cummings, Donald	farmer	N 1 1/2			
69	Carney, Michael	farmer	16			L.S.C. o m f 4
70	Christlaw, Edmund	farmer	B, 11			L.R.E. o m f 4
71	Carney, Richard, jr.	farmer	pt 1			9 W D o m f 4
72	Cook, Wm.	farmer	B and 11			
73	Carney, Daniel	farmer	B and 11			
74	Chisholm, Wm.	farmer	10			
103	Doherty, Thos.	farmer	pt 18, 19			L.S.C. o m f 3
102	Doherty, Nixon	farmer	pt 18, 19			L.S.C. o m f 3
110	Dalton, Jerry	farmer	11			12 W E t m f 4
111	Fulford, Richard	farmer	8 1/2			L.R.E. o m f 4
112	Fulford, George	farmer	8 1/2			L.R.E. o m f 4
119	Fulford, William	farmer	8 1/2			L.R.E. o m f 4
111	Foley, Mathew	farmer	pt 10			L.S.C. o m f 4
113	Foley, John	farmer	9			L.R.W. o m f 4
115	Foley, George	farmer	9			L.R.W. o m f 4
116	Foley, Michael	farmer	9			L.R.W. o m f 4
188	Green, Henry	farmer	8 1/2			10 W D o m f 4
191	Graham, Wm. J.	farmer	16			L.R.W. o m f 3
192	Green, Peter	farmer	pt 16			L.R.W. o m f 3

No. in Roll.	Juror.	N.
-----------------	--------	----

203	Graham.
190	Gliddon.
181	Glazier.
189	Gliddon.
202	Garrett.

226	Hort.
228	Hort.
217	Heal.
221	Hort.
212	Haw.
211	Hav.
225	Hur.
218	Hort.

258 J J
252 J J

270
271
272

28
29
30

POLLING SUB-DIVISION No. 4.

No. in Roll.	Juror.	NAME.	OCCUPATION.	No. of Lot or Part of Lot.	Conces- sion or Street.	Owner or Tenant.	P.O.
203		Graham, William B.	farmer.	11		B W D o m f 8	
190		Gliddon, Richard.	farmer.	S pt 1		L R E. t m f 4	
181		Glazier, William.	hotel.	pt 1		L R E. t m f 4	
189		Gliddon, William.	farmer.	S pt 12		L R W. t m f 4	
202		Garrett, William.	farmer.	N pt 11		L R E. o m f 8	
226		Horton, James.	farmer.	S 1/2 7		L R W. o m f 4	
228		Horton, Hillary.	farmer.	N 1/2 7		L R W. o m f 4	
217		Healey, Joseph.	farmer.	N 1/2 9		L R E. o m f 4	
221		Horton, Henry A.	farmer.	5		L R W. o m f 4	
212		Hawkins, William.	farmer.	W pt 10		B W D o m f 8	
244		Hayden, Frank.	farmer.	pt 18, 19.		L S C. o m f 8	
225		Hunter, John W.	farmer.	E 1/2 11		L R W. o m f 4	
218		Horton, Horace J.	farmer.	pt 1		L R W. o m f 4	
258		Johnston, Samuel.	farmer.	N 1/2 8		12 W D o m f 8	
252		Jewell, William	farmer.	pt 1		L R E. o m f 8	
270		Kelly, Theo.	farmer.	N E 1/2 10.		L S C. o m f 4	
271		Kelly, Patrick	farmer.	N 1/2 10		L R E. o m f 3	
272		Kirkpatrick, James.	farmer.	N 1/2 11, 12.		L R E. o m f 4	
287		Linklater, James	farmer.	S 1/2 6		L R W. o m f 4	
282		Lawson, David	farmer.	2 pt 2		l w. l s c o m f 4	
283		Lawson, John.	farmer.	2 pt 2		h w. l s c o m f 4	
299		McHardy, John	farmer.	N 1/2 10		L S C. o m f 4	
298		McHardy, James	farmer.	N 1/2 10		L S C. o m f 4	
315		McMannus, James jr.	farmer.	5		L S C. o m f 4	
316		McMannus, Hamilton.	farmer.	11		L S C. o m f 4	

No. on Roll.	Juror.	N.
--------------	--------	----

349		McCombe
348		Maw, El
350		McNee,
301		McCann
355		McLeod
353		Morris,
354		Morris,
356		Morris,
347		Mosier,
325		McLeod
352		McW

424 j Qua

455	1	5
456	1	5
457	1	5
458	1	5
459	1	5
462	1	5
450	1	5
464	1	5
460		

509
498
500
501
502
503

POLLING SUB-DIVISION NO. 4.

No. on Roll.	Junior.	NAME.	OCCUPATION.	No. of Lot or Part of Lot.	Conces- sion or Street.	Owner or Tenant.	P. O.
319		McConnell, William	farmer	pt 17	L R E. o m f 8	
348		Maw, Elisha	farmer	pt 17	L R W. t m f 8	
350		McNee, Duncan	farmer	9	13 W D o m f 5	
301		McCann, Joseph E.	farmer	S 1/2 8	12 W D o m f 4	
355		McLeod, Alex.	farmer	W 1/2 7	L R W. t m f 4	
353		Morris, Samuel	farmer	N pt 8	11 W D o m f 4	
351		Morris, Abner	farmer	N pt 8	11 W D o m f 4	
356		Morris, Kenneth	farmer	W 1/2 6	L R W. o m f 4	
347		Mosier, Jacob	farmer	10	L R E. h m f 4	
325		McLeod, Daniel	farmer	N 1/2 4	12 W D o m f 4	
352		McWhiney, James	farmer	9		

121 | Quade, Robert..... farmer ... 1, pt 1 1sc, 1rw o m f 4

455		Sterling, David	farmer	10	10 W D o m f 4	
456		Sterling, Alex. jr	farmer	10	10 W D o m f 4	
457		Stewart, James O	farmer	11	9 W D. o m f 4	
458		Stewart, Percy	farmer	11	L S C. o m f 4	
459		Sterling, Wm. D	farmer	9	11 W D o m f 4	
462		Sturdy, Thomas	farmer	11	L R E. o m f 4	
460		Shaw, Edward	merchant	S 1/2 4	L R W. o m f 8	
461		Simpson, J. H.	masen	pt 17	L R W. o m f 4	
460		Stewart, John	masen	pt 11		

500		Taylor, James	farmer	8	1sc, 1rw o m f 4	
498		Thompson, Joseph	farmer	10	22 W D t m f 4	
506		Tobin, James	farmer	3	1rw, 1rc o m f 4	
501		Tobin, Michael	farmer	3	1rw, 1rc o m f 4	
505		Tobin, William	farmer	3	1rw, 1rc o m f 4	
510		Thurlow, Hugh		15	L S C. o m f 8	

520 | Vrooman, William..... farmer E 1/2 10 13 W D o m f 8

No. on
Roll.
Juror.

N.A.

544 Wright, J.
545 Watson, J.
535 Williams.
536 Williams
534 Williams
537 Williams
533 Williams
538 William
530 William
510 William

571 Young

576 Zol

PA.

11

227

288

351

18

30

POLLING SUB-DIVISION NO. 4.

No. on Roll.	Juror.	NAME.	OCCUPATION.	NO. OF LOT OR PART OF LOT.	CONCESSION OR STREET.	Owner or Tenant.	Q.
541	J	Wright, J. J.	hotel.	pt 8	L S C.	o m f 7
545	J	Watson, James	farmer.	pt 8, 9, 10.	H W E.	o m f 2
535	J	Williams, Raby	farmer.	S 1/2 3	L R E.	o m f 1
536	J	Williams, S. B.	farmer.	2 1/2 3	L R E.	o m f 4
534	J	Williams, R. B. H.	farmer.	2 1/2 3	L R E.	o m f 4
537	J	Williams, J. M.	farmer.	N 1/2 3	L R E.	o m f 4
533	J	Williams, Arthur A.	farmer.	3, 2.	L R E.	o m f 4
538	J	Williams, Patrick	farmer.	1 1/2 3	L R E.	o m f 4
539	J	Williams, Richard	farmer.	1 1/2 3	L R E.	o m f 4
540	J	Williams, Roland	farmer.	1 1/2 3	L R E.	o m f 4
571	J	Young, William	farmer.	pt 17	L R W.	o m f 8
576	J	Zollner, Henry	farmer.	pt 12	L S C.	o m f 4

PART II.--Persons Entitled to Vote at Municipal Elections only.

11	Bogie, Mary Ann	farmer	pt 9, 10	H	owner	8
227	Horton, Ellen	farmer	W 1/2 7	L R W.	owner	4
288	Linklater, John	farmer	W 1/2 6	L R W.	owner	4
351	McWhimney, Ellen		9	12 E D.	owner	7
181	Martin, J. C.		12	L R E.	owner	7
304	Morris, Alfred		E 1/2 6	H	owner	7
123	Price, George		11	12	owner	7
181	Sloan, Samuel		12	L R E.	owner	7
151	Shaw, John		N 1/2 4	L R E.	owner	7

Stratford
127
Wheatland

PART I

No. on Roll.	Juror.
279 ¹ ₂	Kel

Aggregate
Total

Polling S
"
"
"

POLLING SUB-DIVISION No. 4.

PART III---Persons Entitled to Vote at Elections for the Legislative Assembly Only.

No. on Roll.	Juror.	NAME.	OCCUPATION.	No. of LOT OR PART OF LOT.	Concession or Street.	Owner or Tenant.	P.O.
279 ¹ ₂		Kehoe, George.....		pt 8	L. R. E..	m f ..	S

Aggregate number of persons to serve on Juries.....450

Total number of Voters :		PART I.	PART II.	PART III.
Polling Sub-Division No.	1.....	160	12	—
"	2.....	84	17	—
"	3.....	185	9	3
"	4.....	107	9	1

