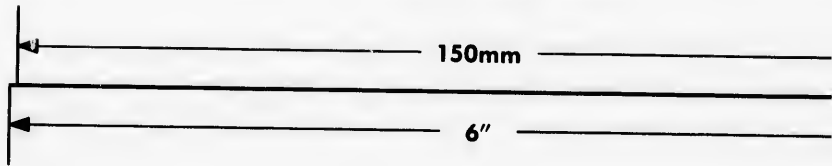
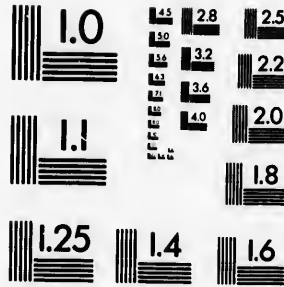
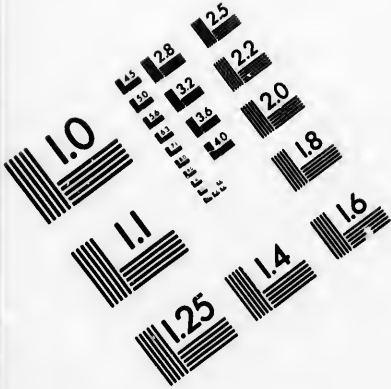


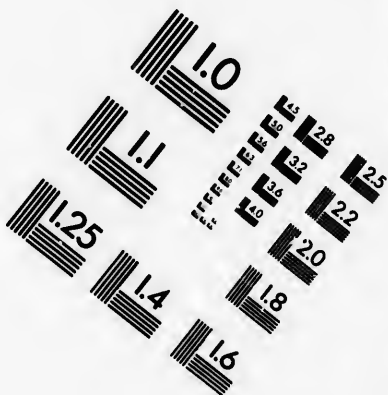
IMAGE EVALUATION TEST TARGET (MT-3)



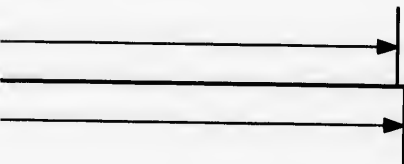
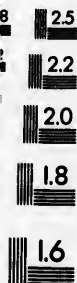
APPLIED IMAGE, Inc
 1653 East Main Street
 Rochester, NY 14609 USA
 Phone: 716/482-0300
 Fax: 716/268-5989

© 1993, Applied Image, Inc., All Rights Reserved

JATION
(MT-3)



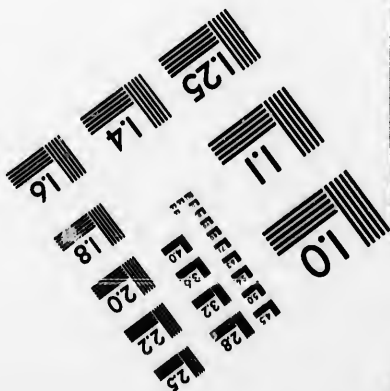
CIHM Microfiche Series (Monograph)



Canadian Institute for Historical Microrepro

SE, Inc
t Main Street
r, NY 14609 USA
16/482-0300
288-5989

Reserved



iche
raphs)

ICMH
Collection de
microfiches
(monographies)



Microreproductions / Institut canadien de microreproductions historiques

1994

The Institute has attempted to obtain the best original copy available for filming. Features of this copy which may be bibliographically unique, which may alter any of the images in the reproduction, or which may significantly change the usual method of filming, are checked below.

- Coloured covers/
Couverture de couleur
- Covers damaged/
Couverture endommagée
- Covers restored and/or laminated/
Couverture restaurée et/ou pelliculée
- Cover title missing/
Le titre de couverture manque
- Coloured maps/
Cartes géographiques en couleur
- Coloured ink (i.e. other than blue or black)/
Encre de couleur (i.e. autre que bleue ou noire)
- Coloured plates and/or illustrations/
Planches et/ou illustrations en couleur
- Bound with other material/
Relié avec d'autres documents
- Tight binding may cause shadows or distortion
along interior margin/
La reliure serrée peut causer de l'ombre ou de la
distorsion le long de la marge intérieure
- Blank leaves added during restoration may appear
within the text. Whenever possible, these have
been omitted from filming/
Il se peut que certaines pages blanches ajoutées
lors d'une restauration apparaissent dans le texte,
mais, lorsque cela était possible, ces pages n'ont
pas été filmées.
- Additional comments: /
Commentaires supplémentaires:

This item is filmed at the reduction ratio checked below/
Ce document est filmé au taux de réduction indiqué ci-dessous.

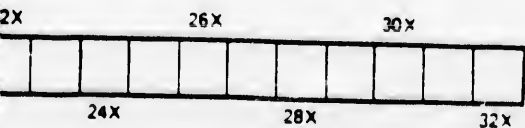
10X	14X	18X	22X
<input type="checkbox"/>	<input type="checkbox"/>	<input checked="" type="checkbox"/>	<input type="checkbox"/>
12X	16X	20X	24X
<input type="checkbox"/>	<input type="checkbox"/>	<input type="checkbox"/>	<input type="checkbox"/>

L'Inst
lui a é
exemp
biblio
repro
dans l
ci-dess

Notes techniques et bibliographiques

L'Institut a microfilmé le meilleur exemplaire qu'il lui a été possible de se procurer. Les détails de cet exemplaire qui sont peut-être uniques du point de vue bibliographique, qui peuvent modifier une image reproduite, ou qui peuvent exiger une modification dans la méthode normale de filmage sont indiqués ci-dessous.

- Coloured pages/
Pages de couleur
 - Pages damaged/
Pages endommagées
 - Pages restored and/or laminated/
Pages restaurées et/ou pelliculées
 - Pages discoloured, stained or foxed/
Pages décolorées, tachetées ou piquées
 - Pages detached/
Pages détachées
 - Showthrough/
Transparence
 - Quality of print varies/
Qualité inégale de l'impression
 - Continuous pagination/
Pagination continue
 - Includes index(es)/
Comprend un (des) index
- Title on header taken from: /
Le titre de l'en-tête provient:
- Title page of issue/
Page de titre de la livraison
 - Caption of issue/
Titre de départ de la livraison
 - Masthead/
Générique (périodiques) de la livraison



The copy filmed here has been reproduced to the generosity of:

National Library of Canada

The images appearing here are the best possible considering the condition and age of the original copy and in keeping with the filming contract specifications.

Original copies in printed paper covers are beginning with the front cover and ending the last page with a printed or illustrated impression, or the back cover when appropriate. Other original copies are filmed beginning with the first page with a printed or illustrated impression, and ending on the last page with a printed or illustrated impression.

The last recorded frame on each microfilm shall contain the symbol → (meaning "CONTINUED"), or the symbol ▼ (meaning "END") whichever applies.

Maps, plates, charts, etc., may be filmed at different reduction ratios. Those too large to be entirely included in one exposure are filmed beginning in the upper left hand corner, left to right and top to bottom, as many frames as required. The following diagrams illustrate the method:



ed here has been reproduced thanks
sity of:

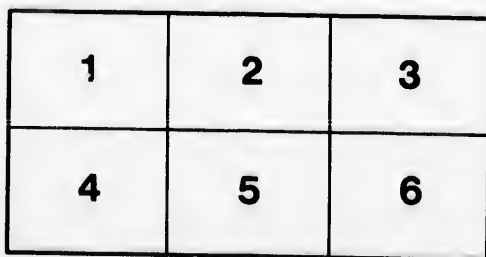
National Library of Canada

appearing here are the best quality
sidering the condition and legibility
copy and in keeping with the
ct specifications.

s in printed paper covers are filmed
h the front cover and ending on
with a printed or illustrated impres-
ck cover when appropriate. All
copies are filmed beginning on the
a printed or illustrated impres-
ng on the last page with a printed
impression.

led frame on each microfiche
he symbol \rightarrow (meaning "CON-
che symbol ∇ (meaning "END"),
lies.

charts, etc., may be filmed at
tion ratios. Those too large to be
d in one exposure are filmed
e upper left hand corner, left to
o bottom, as many frames as
ollowing diagrams illustrate the



L'exemplaire filmé fut reproduit grâce à la
générosité de:

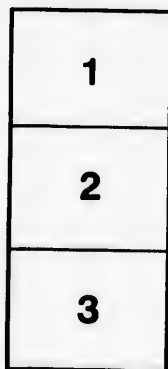
Bibliothèque nationale du Canada

Les images suivantes ont été reproduites avec le
plus grand soin, compte tenu de la condition et
de la netteté de l'exemplaire filmé, et en
conformité avec les conditions du contrat de
filmage.

Les exemplaires originaux dont la couverture en
papier est imprimée sont filmés en commençant
par le premier plat et en terminant soit par la
dernière page qui comporte une empreinte
d'impression ou d'illustration, soit par le second
plat, selon le cas. Tous les autres exemplaires
originaux sont filmés en commençant par la
première page qui comporte une empreinte
d'impression ou d'illustration et en terminant par
la dernière page qui comporte une telle
empreinte.

Un des symboles suivants apparaîtra sur la
dernière image de chaque microfiche, selon le
cas: le symbole \rightarrow signifie "A SUIVRE", le
symbole ∇ signifie "FIN".

Les cartes, planches, tableaux, etc., peuvent être
filmés à des taux de réduction différents.
Lorsque le document est trop grand pour être
reproduit en un seul cliché, il est filmé à partir
de l'angle supérieur gauche, de gauche à droite,
et de haut en bas, en prenant le nombre
d'images nécessaire. Les diagrammes suivants
illustrent la méthode.



A SONG.

'Tis Autumn and down in the fields
The buckwheat is browning still :
Gather yourself in your cloak,
The Winter is over the hill.

There's a cloud of black in the north,
The aurora is smouldering behind,
There are stars in the parting clouds,
And a touch of frost in the wind.

Down in the icy dew
The crickets are cheering shrill :
" There is time for another song,
" Though Winter is over the hill."

Out of the great black cloud,
The aurora leaps and flies,
Pushing its phosphor spikes
In the deeps of the violet skies.

The moon is wrapped in a film,
She looks wan and chill :
Gather yourself in your cloak,
The Winter is over the hill.

EA
Ear
Emp
Emp
Now
And
The
The
The
Yet
Bea
In a
Dae
Wh
And

EARTH: THE STOIC.

Earth like a goblet empty of delight,
Empty of summer and balm-breathing hours,
Empty of music, empty of all flowers,
Now with that other draught of death and night,
And loss and iron bitterness refills :
The upland rifts are gleaming white with snow,
The north wind pipes, the forests groan below,
The clouds are heaping grandly on the hills.

Yet dost thou not complain, O steadfast Earth,
Beautiful Mother, with thy stoic fields ;
In all the ages since thy fiery birth,
Deep in thine own wide heart thou findest still
Whatever comforts and whatever shields,
And plannest also for us the same sheer will.

