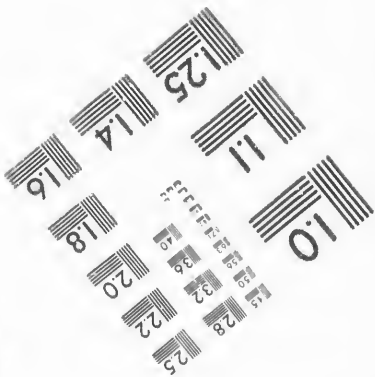
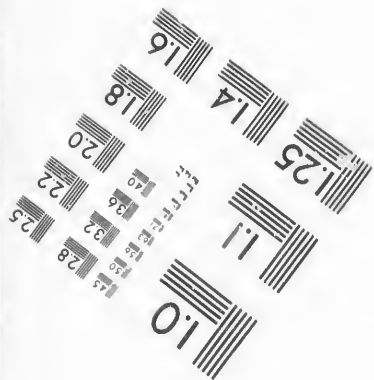
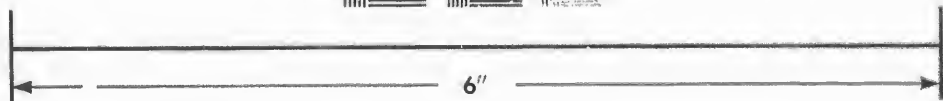
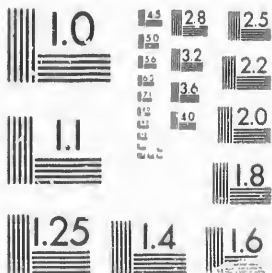


IMAGE EVALUATION
TEST TARGET (MT-3)



Photographic
Sciences
Corporation

23 WEST MAIN STREET
WEBSTER, N.Y. 14580
(716) 872-4503

Canada

28 25
22
20

**CIHM/ICMH
Microfiche
Series.**

**CIHM/ICMH
Collection de
microfiches.**



Canadian Institute for Historical Microreproductions / Institut canadien de microreproductions historiques

01

© 1987

Technical and Bibliographic Notes/Notes techniques et bibliographiques

The Institute has attempted to obtain the best original copy available for filming. Features of this copy which may be bibliographically unique, which may alter any of the images in the reproduction, or which may significantly change the usual method of filming, are checked below.

L'Institut a microfilmé le meilleur exemplaire qu'il lui a été possible de se procurer. Les détails de cet exemplaire qui sont peut-être uniques du point de vue bibliographique, qui peuvent modifier une image reproduite, ou qui peuvent exiger une modification dans la méthode normale de filmage sont indiqués ci-dessous.

- Coloured covers/
Couverture de couleur
- Covers damaged/
Couverture endommagée
- Covers restored and/or laminated/
Couverture restaurée et/ou pelliculée
- Cover title missing/
Le titre de couverture manque
- Coloured maps/
Cartes géographiques en couleur
- Coloured ink (i.e. other than blue or black)/
Encre de couleur (i.e. autre que bleue ou noire)
- Coloured plates and/or illustrations/
Planches et/ou illustrations en couleur
- Bound with other material/
Relié avec d'autres documents
- Tight binding may cause shadows or distortion
along interior margin/
La reliure serrée peut causer de l'ombre ou de la
distorsion le long de la marge intérieure
- Blank leaves added during restoration may
appear within the text. Whenever possible, these
have been omitted from filming/
Il se peut que certaines pages blanches ajoutées
lors d'une restauration apparaissent dans le texte,
mais, lorsque cela était possible, ces pages n'ont
pas été filmées.
- Additional comments: / [Printed ephemera] [2] p.
Commentaires supplémentaires:

- Coloured pages/
Pages de couleur
- Pages damaged/
Pages endommagées
- Pages restored and/or laminated/
Pages restaurées et/ou pelliculées
- Pages discoloured, stained or foxed/
Pages décolorées, tachetées ou piquées
- Pages detached/
Pages détachées
- Showthrough/
Transparence
- Quality of print varies/
Qualité inégale de l'impression
- Includes supplementary material/
Comprend du matériel supplémentaire
- Only edition available/
Seule édition disponible
- Pages wholly or partially obscured by errata
slips, tissues, etc., have been refilmed to
ensure the best possible image/
Les pages totalement ou partiellement
obscurcies par un feuillet d'errata, une pelure,
etc., ont été filmées à nouveau de façon à
obtenir la meilleure image possible.

This item is filmed at the reduction ratio checked below/
Ce document est filmé au taux de réduction indiqué ci-dessous.

10X	14X	18X	22X	26X	30X
<input type="checkbox"/>	<input type="checkbox"/>	<input type="checkbox"/>	<input checked="" type="checkbox"/>	<input type="checkbox"/>	<input type="checkbox"/>
12X	16X	20X	24X	28X	32X

The copy filmed here has been reproduced thanks to the generosity of:

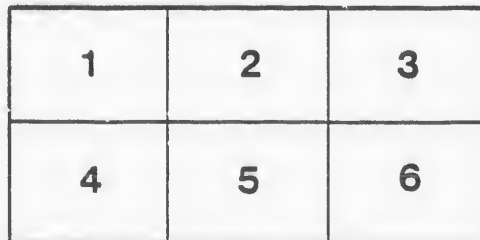
D. B. Weldon Library
University of Western Ontario
(Regional History Room)

The images appearing here are the best quality possible considering the condition and legibility of the original copy and in keeping with the filming contract specifications.

Original copies in printed paper covers are filmed beginning with the front cover and ending on the last page with a printed or illustrated impression, or the back cover when appropriate. All other original copies are filmed beginning on the first page with a printed or illustrated impression, and ending on the last page with a printed or illustrated impression.

The last recorded frame on each microfiche shell contain the symbol \rightarrow (meaning "CONTINUED"), or the symbol ∇ (meaning "END"), whichever applies.

Maps, plates, charts, etc., may be filmed at different reduction ratios. Those too large to be entirely included in one exposure are filmed beginning in the upper left hand corner, left to right and top to bottom, as many frames as required. The following diagrams illustrate the method:



L'exemplaire filmé fut reproduit grâce à la générosité de:

D. B. Weldon Library
University of Western Ontario
(Regional History Room)

Les images suivantes ont été reproduites avec le plus grand soin, compte tenu de la condition et de la netteté de l'exemplaire filmé, et en conformité avec les conditions du contrat de filmage.

Les exemplaires originaux dont la couverture en papier est imprimée sont filmés en commençant par le premier plat et en terminant soit par la dernière page qui comporte une empreinte d'impression ou d'illustration, soit par le second plat, selon le cas. Tous les autres exemplaires originaux sont filmés en commençant par la première page qui comporte une empreinte d'impression ou d'illustration et en terminant par la dernière page qui comporte une telle empreinte.

Un des symboles suivants apparaîtra sur la dernière image de chaque microfiche, selon le cas: le symbole \rightarrow signifie "A SUIVRE", le symbole ∇ signifie "FIN".

Les cartes, planches, tableaux, etc., peuvent être filmés à des taux de réduction différents. Lorsque le document est trop grand pour être reproduit en un seul cliché, il est filmé à partir de l'angle supérieur gauche, de gauche à droite, et de haut en bas, en prenant le nombre d'images nécessaire. Les diagrammes suivants illustrent la méthode.

University of Hamilton.

In the UNIVERSITY there will be the following Departments or Faculties, viz. :

- I.—FACULTY OF ARTS.
- II.—FACULTY OF LAW.
- III.—FACULTY OF MEDICINE.
- IV.—AGRICULTURE.
- V.—MERCANTILE.
- VI.—MECHANICS.

I. FACULTY OF ARTS.

This College, or Department in the University, is to embrace the Collegiate course of instruction which has obtained in similar Institutions, viz., Ancient and Modern Languages; Mathematics; Natural, Mental, and Moral Sciences; General, but more particularly, English Literature.

The Degrees to be conferred in this Faculty, are B. A. and M. A.

II. LAW.

The Studies and Lectures necessary for Students in Law, to be established in this Department. But Lectures, on the more practical parts of the Laws of the country, to be open to all the Students of the University.

The Degrees to be conferred in this Faculty, are B. C. L. and D. C. L.

III. MEDICINE.

To embrace the Studies usual in Schools of Medicine.

The Degrees to be M. B. and M. D.

IV. AGRICULTURE.

With a Farm, under the superintendence of a practical Agriculturist, and Lectures on those subjects which elucidate every department of Agriculture—as the nature of Soils, Manures, Rotation of Crops, Drainage, &c. Also, Natural Philosophy—as Mechanics, Hydrostatics, Hydraulics, Pneumatics, with Chemistry, Botany, &c.

Appropriate Degrees to be given in this and the two following Departments.

V. MERCANTILE.

In which will be taught those studies especially necessary for the Merchant, the Banker, the Accountant, &c.—such as Book-keeping, Political Economy (the Laws of Wealth), French, &c.

VI. MECHANICS.

In which the Scientific knowledge necessary in the Mechanical Arts, shall be taught. This Department will also include Navigation, Surveying, Engineering, Gunnery, &c.

THE UNIVERSITY is designed to be eminently practical, and to afford facilities for the attainment of the Scientific knowledge necessary in the Professions, (except Divinity,) and in all the chief callings in Society ; to furnish, as far as a public institution can, that kind of Education which Milton so well describes : " I call a complete and general education that which fits a man to perform justly, skilfully, and magnanimously, all the offices, both private and public. of peace and war."

The entire system to be in one University, and under one organization, embracing the several Faculties and Departments above specified.

The Trustees for the management of the property, and for the election of the Professors in the University, to be appointed—one by each Municipality which shall make an appropriation of £500, and one by the Governor General. Each Municipality to appoint one Trustee for each £500 appropriated.

CITY HALL, Hamilton, 1st June, 1855.

J. HURLBURT, A. M., B. C. L.

DEAR SIR,—At your request I beg to enclose you an extract from the Report of the Finance Committee adopted by the City Council on the 28th May last.

I am, Your obed't Servant,

THOS. BEASLEY,
Clerk of City Council.

REPORT OF THE FINANCE COMMITTEE,

On the Memorial of Mr. Hurlburt, in reference to the establishment of a UNIVERSITY in Hamilton. Adopted by the City Council.

The Memorial of Mr. Hurlburt referred to your Committee by this Council, asking the Corporation to investigate and report upon the propriety of establishing a University in this City for teaching the following branches: 1st, Faculty of Arts; 2nd, Agriculture; 3rd, Mechanics; 4th, Mercantile; 5th, Law; 6th Medicine.

Your Committee gave the subject their serious consideration, and are of opinion that such an Institution is highly necessary.

Your Committee would here remark that the proposed University contains one feature which must highly recommend it to the support of the public. Your Committee refer to the proposed facilities for imparting the scientific knowledge required in every department of practical life. The advantages to Hamilton of such a University must be apparent to all, and especially to those who feel an interest in the education of the young.

Your Committee find, however, that at present they have no power to grant any sum of money to Institutions of this kind; but as soon as an Act can be procured from the Government, giving power to Municipalities to do so, they would then be able to give a more substantial support than at the present time.

THOMAS GRAY,
Chairman of Finance Committee.

May 26, 1855.

