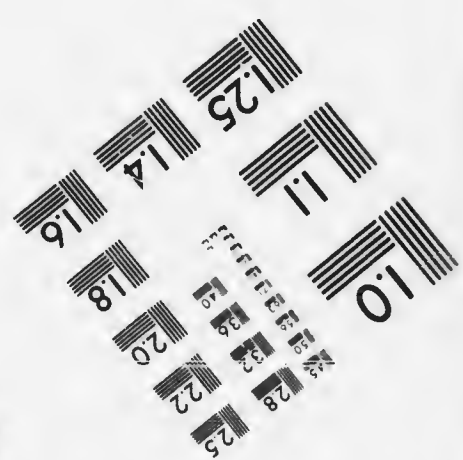
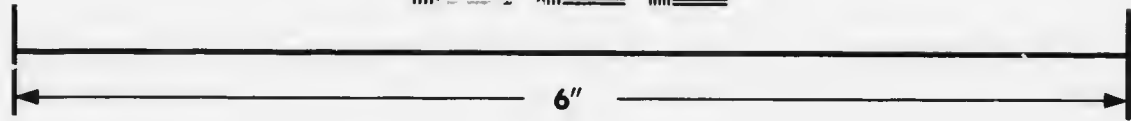
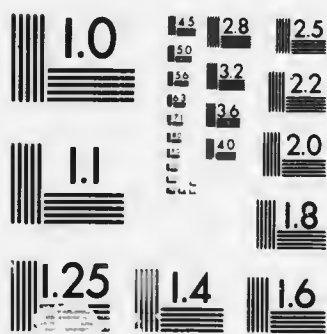


**IMAGE EVALUATION  
TEST TARGET (MT-3)**



**Photographic  
Sciences  
Corporation**

23 WEST MAIN STREET  
WEBSTER, N.Y. 14580  
(716) 872-4503

125  
22

**CIHM/ICMH  
Microfiche  
Series.**

**CIHM/ICMH  
Collection de  
microfiches.**



**Canadian Institute for Historical Microreproductions / Institut canadien de microreproductions historiques**

**© 1987**

Technical and Bibliographic Notes/Notes techniques et bibliographiques

The institute has attempted to obtain the best original copy available for filming. Features of this copy which may be bibliographically unique, which may alter any of the images in the reproduction, or which may significantly change the usual method of filming, are checked below.

L'Institut a microfilmé le meilleur exemplaire qu'il lui a été possible de se procurer. Les détails de cet exemplaire qui sont peut-être uniques du point de vue bibliographique, qui peuvent modifier une image reproduite, ou qui peuvent exiger une modification dans la méthode normale de filmage sont indiqués ci-dessous.

- Coloured covers/  
Couverture de couleur
- Covers damaged/  
Couverture endommagée
- Covers restored and/or laminated/  
Couverture restaurée et/ou pelliculée
- Cover title missing/  
Le titre de couverture manque
- Coloured maps/  
Cartes géographiques en couleur
- Coloured ink (i.e. other than blue or black)/  
Encre de couleur (i.e. autre que bleue ou noire)
- Coloured plates and/or illustrations/  
Planches et/ou illustrations en couleur
- Bound with other material/  
Relié avec d'autres documents
- Tight binding may cause shadows or distortion along interior margin/  
La reliure serrée peut causer de l'ombre ou de la distorsion le long de la marge intérieure
- Blank leaves added during restoration may appear within the text. Whenever possible, these have been omitted from filming/  
Il se peut que certaines pages blanches ajoutées lors d'une restauration apparaissent dans le texte, mais, lorsque cela était possible, ces pages n'ont pas été filmées.
- Additional comments:/  
Commentaires supplémentaires:

- Coloured pages/  
Pages de couleur
- Pages damaged/  
Pages endommagées
- Pages restored and/or laminated/  
Pages restaurées et/ou pelliculées
- Pages discoloured, stained or foxed/  
Pages décolorées, tachetées ou piquées
- Pages detached/  
Pages détachées
- Showthrough/  
Transparence
- Quality of print varies/  
Qualité inégale de l'impression
- Includes supplementary material/  
Comprend du matériel supplémentaire
- Only edition available/  
Seule édition disponible
- Pages wholly or partially obscured by errata slips, tissues, etc., have been refilmed to ensure the best possible image/  
Les pages totalement ou partiellement obscurcies par un feuillet d'errata, une pelure, etc., ont été filmées à nouveau de façon à obtenir la meilleure image possible.

This item is filmed at the reduction ratio checked below/  
Ce document est filmé au taux de réduction indiqué ci-dessous.

10X	14X	18X	22X	26X	30X
<input type="checkbox"/>	<input type="checkbox"/>	<input checked="" type="checkbox"/>	<input type="checkbox"/>	<input type="checkbox"/>	<input type="checkbox"/>
12X	16X	20X	24X	28X	32X

The copy filmed here has been reproduced thanks to the generosity of:

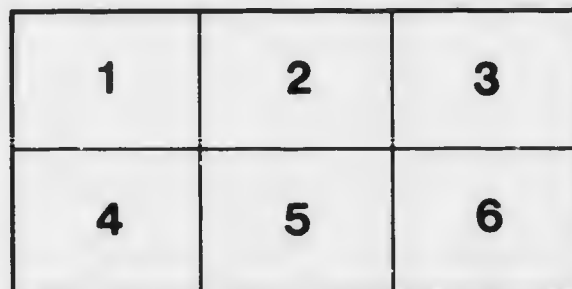
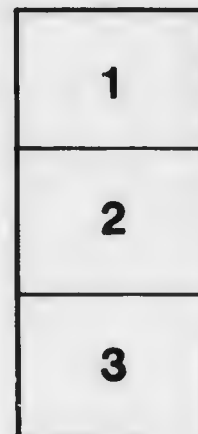
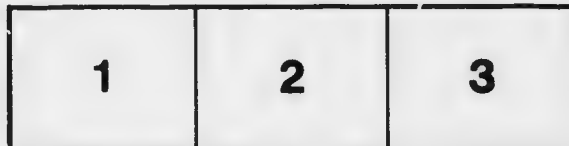
Douglas Library  
Queen's University

The images appearing here are the best quality possible considering the condition and legibility of the original copy and in keeping with the filming contract specifications.

Original copies in printed paper covers are filmed beginning with the front cover and ending on the last page with a printed or illustrated impression, or the back cover when appropriate. All other original copies are filmed beginning on the first page with a printed or illustrated impression, and ending on the last page with a printed or illustrated impression.

The last recorded frame on each microfiche shall contain the symbol  $\rightarrow$  (meaning "CONTINUED"), or the symbol  $\nabla$  (meaning "END"), whichever applies.

Maps, plates, charts, etc., may be filmed at different reduction ratios. Those too large to be entirely included in one exposure are filmed beginning in the upper left hand corner, left to right and top to bottom, as many frames as required. The following diagrams illustrate the method:



L'exemplaire filmé fut reproduit grâce à la générosité de:

Douglas Library  
Queen's University

Les images suivantes ont été reproduites avec le plus grand soin, compte tenu de la condition et de la netteté de l'exemplaire filmé, et en conformité avec les conditions du contrat de filmage.

Les exemplaires originaux dont la couverture en papier est imprimée sont filmés en commençant par le premier plat et en terminant soit par la dernière page qui comporte une empreinte d'impression ou d'illustration, soit par le second plat, selon le cas. Tous les autres exemplaires originaux sont filmés en commençant par la première page qui comporte une empreinte d'impression ou d'illustration et en terminant par la dernière page qui comporte une telle empreinte.

Un des symboles suivants apparaîtra sur la dernière image de chaque microfiche, selon le cas: le symbole  $\rightarrow$  signifie "A SUIVRE", le symbole  $\nabla$  signifie "FIN".

Les cartes, planches, tableaux, etc., peuvent être filmés à des taux de réduction différents. Lorsque le document est trop grand pour être reproduit en un seul cliché, il est filmé à partir de l'angle supérieur gauche, de gauche à droite, et de haut en bas, en prenant le nombre d'images nécessaire. Les diagrammes suivants illustrent la méthode.

21<sup>ST</sup> LOAN EXHIBITION  
OF PAINTINGS, IN  
THE ART GALLERY  
PHILLIPS SQUARE.

BEGINNING FEBRUARY 20th,  
1899.

The Art Association,  
Montreal.

LP  
F5012  
1899.  
M811

PRINTED BY  
D. BENTLEY & CO.  
*Fine Art Printers,*  
1746 NOTRE DAME STREET,  
MONTREAL.

F8040

Montreal, Art Association

**21<sup>ST</sup> LOAN EXHIBITION  
OF PAINTINGS, IN  
THE ART GALLERY  
PHILLIPS SQUARE.**

✻ ✻

**BEGINNING FEBRUARY 20th,  
1899.**

✻

**The Art Association,  
Montreal.**

2<sup>o</sup> F5012 1899 M811



# Art Association of Montreal.

---

## Council for the Year 1898.

*President,* - - MR. JAMES ROSS.  
*Vice-President,* HON. G. A. DRUMMOND.  
*Treasurer,-* - MR. C. J. FLEET.

---

### Councillors.

#### *For One Year.*

MR. R. B. ANGUS.  
" E. S. CLOUSTON.  
DR. W. GARDNER.  
DR. F. J. SHEPHERD.  
MR. A. T. TAYLOR.  
MR. D. A. WATT.  
ROBERT LINDSAY, *Secretary.*

#### *For Two Years.*

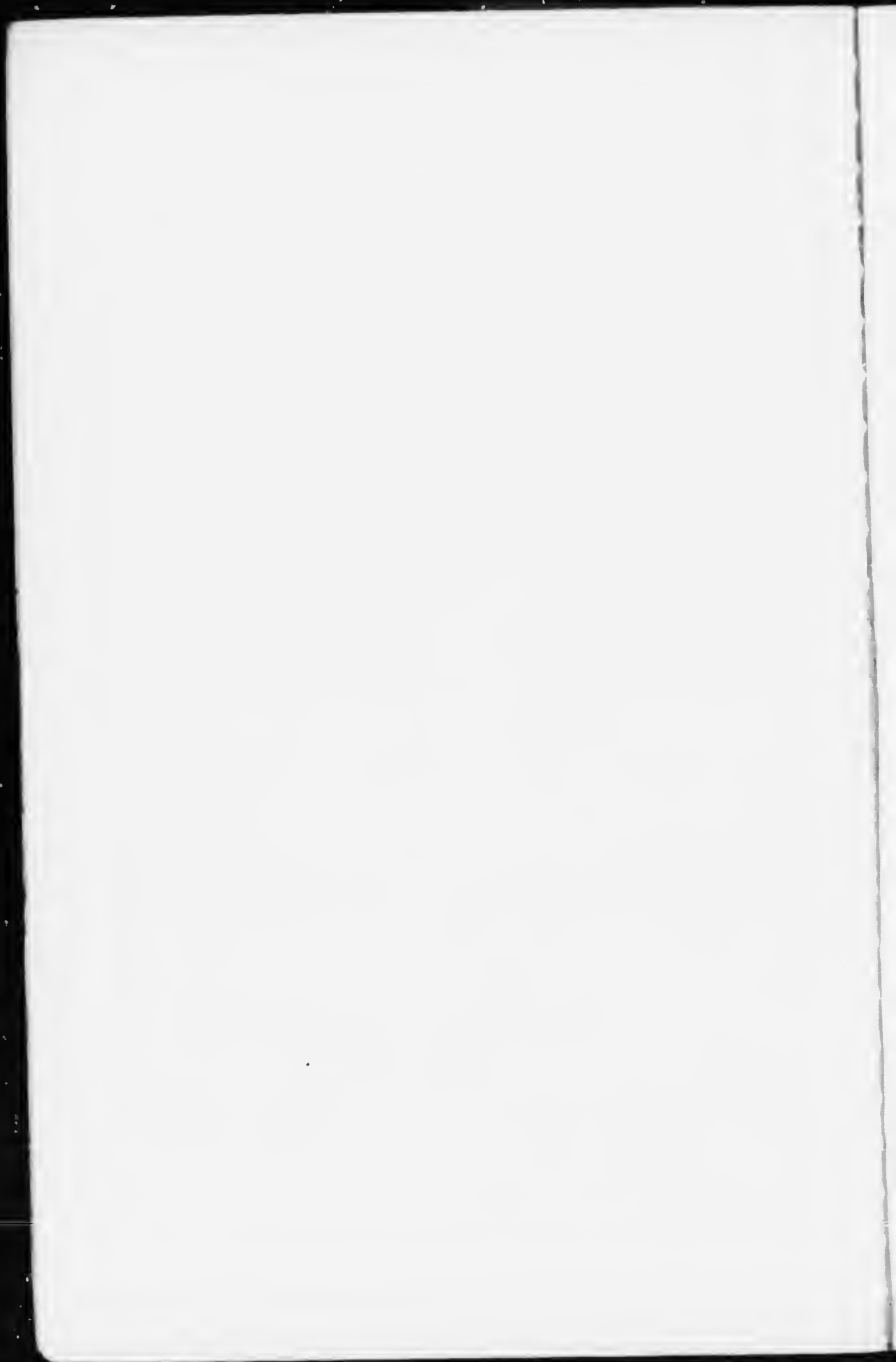
REV. J. EDGAR HILL.  
MR. E. B. GREENSHIELDS.  
" W. J. LEARMONT.  
" WILLIAM MCLENNAN.  
" DAVID MORRICE.  
SIR WM. C. VAN HORNE.  
MISS PANGMAN, *Asst. Secretary.*

---

## Loan Exhibition, February, 1899.

### Executive Committee.

HON. G. A. DRUMMOND.	DR. WM. GARDNER.
MR. R. B. ANGUS.	DR. F. J. SHEPHERD.
MR. E. B. GREENSHIELDS.	MR. A. T. TAYLOR.



## CATALOGUE.

**BOSBOOM (Johannes)** ..... Dutch  
1817-1892.

MEDALS :—Paris, 1855, 1889 ; Philadelphia, 1876. Knight of the Order of the Lion, of the Crown of Oak and of Leopold.

1—The Alms House (*Water Colour*)  
Lent by F. J. Shepherd, Esq., M.D.

2—Interior of Church (Water Colour)  
Lent by James Crathern, Esq.

3—Interior of Church (~~Water Colour~~)  
Lent by W. J. Learmont, Esq.

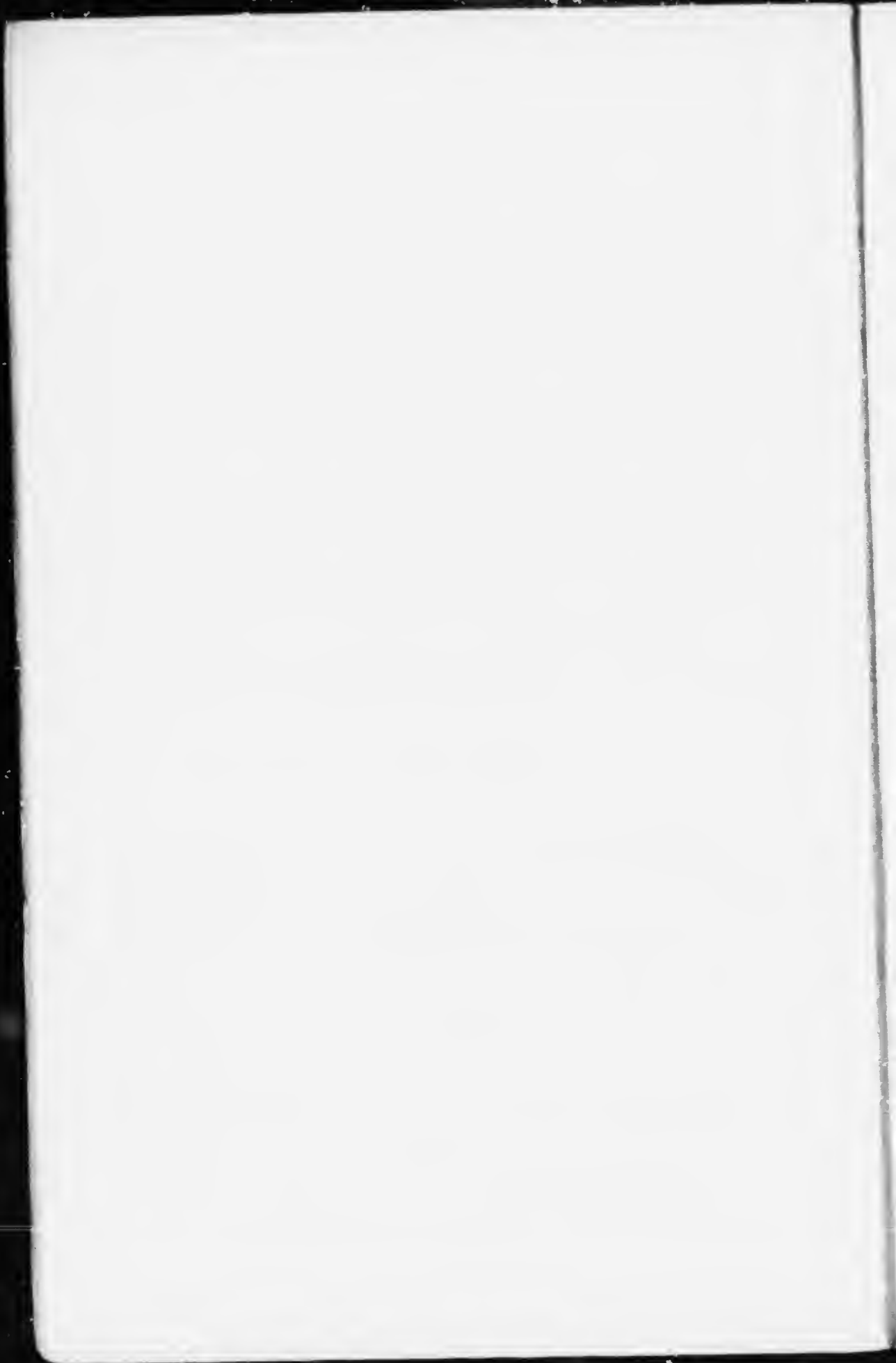
**BOUDIN (Eugène)** ..... French  
1810 1898.

4—Landscape, St. Damoye  
Lent by Wm. Gardner, Esq., M.D.

5—Ia Dune à Etaples  
Lent by Thomas Fyshe, Esq.

**CONSTABLE (John) R.A** ..... British  
1776-1837.

6—The Old Mill  
Lent by The Hon. G. A. Drummond.



**COROT (Jean Baptiste Camille)** ..... French  
1796-1875.

MEDALS:—Paris, 1833, 1848, 1855, 1867. Legion of Honour, 1846.  
Officer, 1867.

7—Landscape

Lent by the Hon. G. A. Drummond.

8—The Fisherman

Lent by W. W. Ogilvie, Esq.

9—Twilight

Lent by Hector MacKenzie, Esq.

10—Landscape

Lent by James Ross, Esq.

11—Femme à la Fontaine

Lent by R. B. Angus, Esq.

12—Figure

Lent by W. J. Learmont, Esq.

*Lawb. G.*  
**CUYP (~~Aelbert~~)** ..... Dutch  
~~1620-1691.~~ 1575-1649.

13—Dutch Lady

Lent by James Crathern, Esq.

**DAUBIGNY (Charles François)** ..... French  
1817-1878.

MEDALS:—Paris, 1848, 1853, 1857, 1859. Diploma to the memory  
of deceased artists, 1878.

14—Landscape

Lent by R. B. Angus, Esq.

15—The Valley of the Dieppe

Lent by W. J. Learmont, Esq.



---

**DECAMPS (Alexandre Gabriel)** ..... French

1803-1860.

MEDALS :—Paris, 1831, 1834. Legion of Honour, 1839.  
Officer, 1851.

16—" Le Chenil "

Lent by C. R. Hosmer, Esq.

**DELACROIX (Ferdinand Victor Eugène)** ..... French

1779-1863.

Legion of Honour, 1831 ; Officer, 1846 ; Commander, 1855.

17—Lady Macbeth

Lent by C. R. Hosmer, Esq.

**ETTY (William) R. A** ..... British

1787-1849.

18—Bivouac of Cupid and his Company

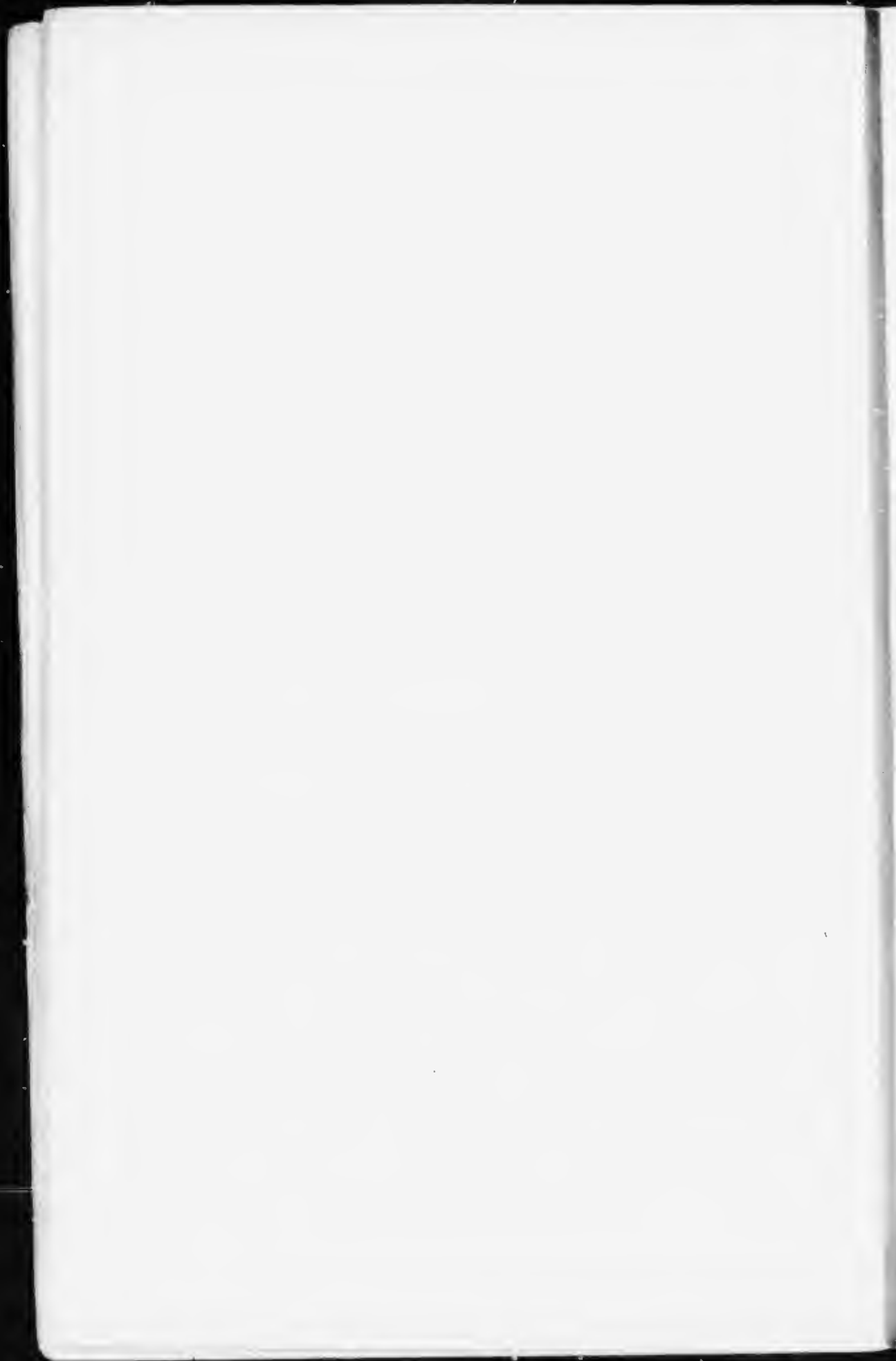
Lent by R. B. Angus, Esq.

**HOPPNER (John) R. A** ..... British

1758-1810.

19—Portrait of a Lady

Lent by C. R. Hosmer, Esq.





---

**INNES (George) N.A** .....American  
1825-1894.

20—Sunset

Lent by R. B. Angus, Esq.

21—Sunset over the hills

Lent by James Ross, Esq.

**JACQUE (Charles Emile)** .....French  
1813-1894.

MEDALS :—1851, 1861, 1863, 1864, 1867. Legion of Honour, 1867.

22—Evening, returning home

Lent by the Hon. G. A. Drummond.

**JONGKIND (Johann Barthold)** .....Dutch  
1819-1891.

23—The Skaters

Lent by C. R. Hosmer, Esq.

**LHERMITTE (Léon Augustin)** .....Paris

MEDALS :—1874 and 1880. Legion of Honour, 1884.

24—Ruins of the Chateau Thierry

Lent by W. J. Learmont, Esq.

25—Harvest

Lent by J. Reid Wilson, Esq.



---

**MARIS (Jacobus)** .....The Hague

Hon. Mention, Salon, Paris, 1884. Exposition Universelle, 1889.

26—Coast Scene, Holland

Lent by the Hon. G. A. Drummond.

27—Dort Cathedral, Winter

28—The Beach, Scheveningen

Lent by Wm. Gardner, Esq., M.D.

29—Canal Scene

Lent by J. Reid Wilson, Esq.

30—On the Sea Shore

Lent by James Ross, Esq.

31—The Picture Book

32—The Rhine at Katwyk

Lent by W. J. Learmont, Esq.

**MAX (Gabriel)** ..... Munich

MEDALS :—Gold, Berlin and Munich.

33—Susanne

Lent by J. Reid Wilson, Esq. X

**MESDAG (Hendrik Willem) H.C** .....The Hague

MEDALS :—Paris, 1870, 1878 ; Gold, 1889 ; Legion of Honour, 1889.

Knight of the Order of Leopold.

34—Marine

Lent by George Sumner, Esq.



---

**MONTICELLI (Adolphe)** ... .. French  
1824-1886.

35—Festival of Isis

Lent by James Ross, Esq.

36—A Festival on the Terrace

Lent by W. J. Learmont, Esq.

**MUHRMAN (Henry)** .....

37—Low water near Kew Bridge (Pastel)

Lent by James Ross, Esq.

**NEUHUYS (Albert) H.C** ..... The Hague  
MEDALS :—Amsterdam, 1872 ; Paris, 1880.

38—Sheep Shearing

Lent by James Crathern, Esq.

39—Interior of Fisherman's House

Lent by J. Reid Wilson, Esq.

**PYNE (James Barker)** ..... British  
1800-1870.

40—Marine

Lent by James Crathern, Esq.

**REYNOLDS (Sir Joshua) P.R.A** ..... British  
1723-1792.

41—Sylvia

Lent by James Ross, Esq.

*Van Dyke Pastel*



---

**ROUSSEAU (Pierre Etienne Théodore)** ..... French  
1812-1867.

MEDALS :—Paris, 1834, 1849, 1855, 1867. Legion of Honour, 1852.

42—The Edge of the Wood

Lent by W. W. Ogilvie, Esq.

**STARK (James)** ..... British  
1794-1859.

43—Hampstead Heath

Lent by Messrs. W. Scott & Sons.

**SWAN (John Macallan)** ..... London

44—Prowling Lions (Pastel)

Lent by James Crathern, Esq.

**THOLEN (Willem Bastien)** ..... Antwerp

MEDALS :—Bronze, Paris, 1889 ; Gold, 1st Class, Exposition Inter-  
nationale des Beaux Arts, Munich, 1892.

45—Landscape

Lent by Wm. Gardner, Esq., M.D.

46—Dutch Harbour

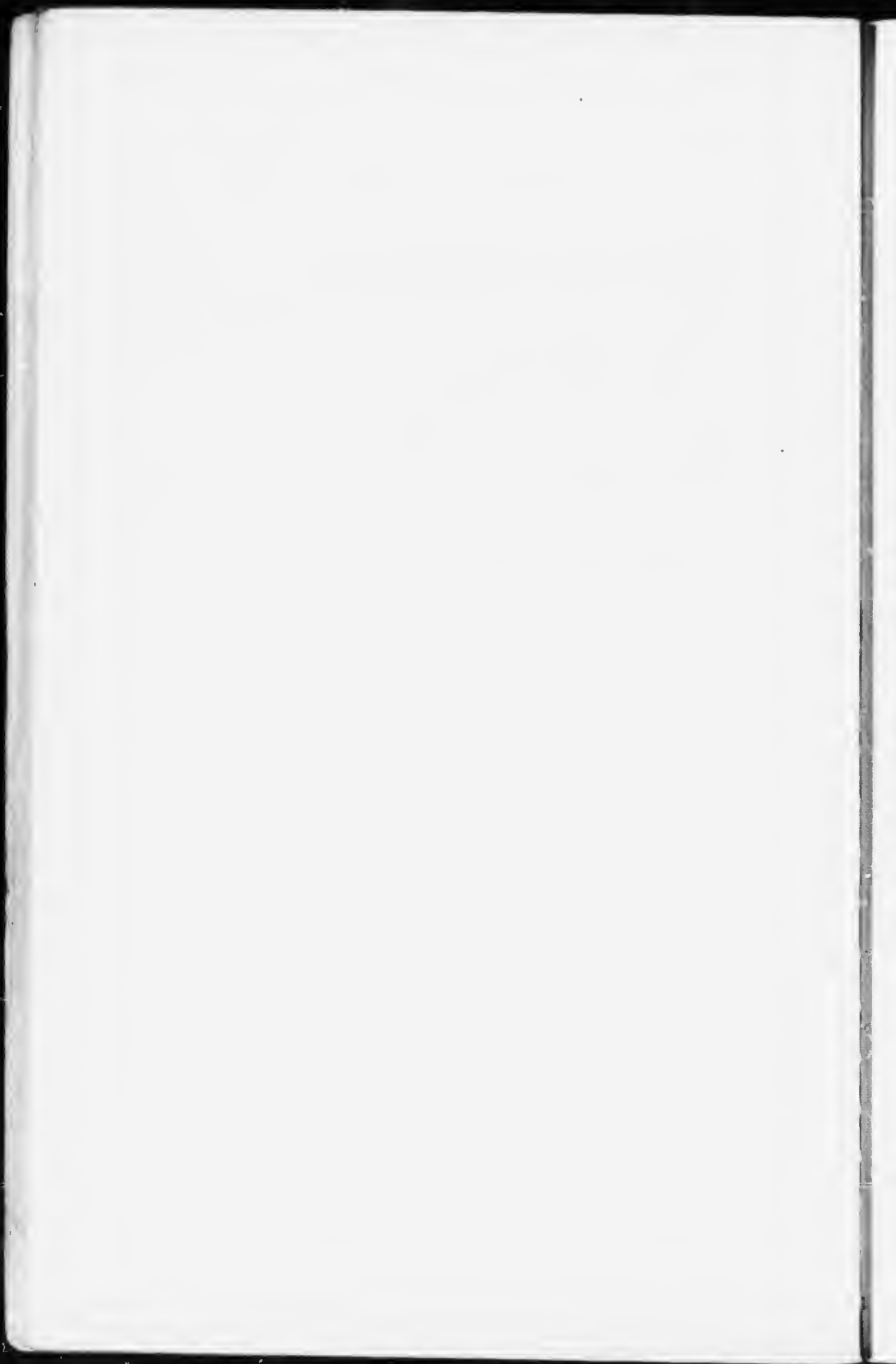
Lent by A. A. Browne, Esq., M.D.

47—Sand Dune, Holland

Lent by James Crathern, Esq.

48—Sand Dunes, Scheveningen

Lent by W. J. Learmont, Esq.





---

**TURNER (J. M. W.) R.A** .....British

1775-1851.

49—Sunrise

Lent by the Estate A. Wilson.

**VAN MARCKE (Emile)** .....French

1827-1891.

MEDALS :—Salon, 1867, 1869, 1870. Exposition Universelle, 1878.  
Chevalier Legion of Honour, 1872.

50—In the Marshes

Lent by W. W. Ogilvie, Esq.

**WEISSENBRUCH (J. H.)** .....The Hague

51—Landscape

Lent by A. A. Browne, Esq., M.D.

52—The Strand (Water Colour)

Lent by Wm. Gardner, Esq., M.D.

53—Landscape

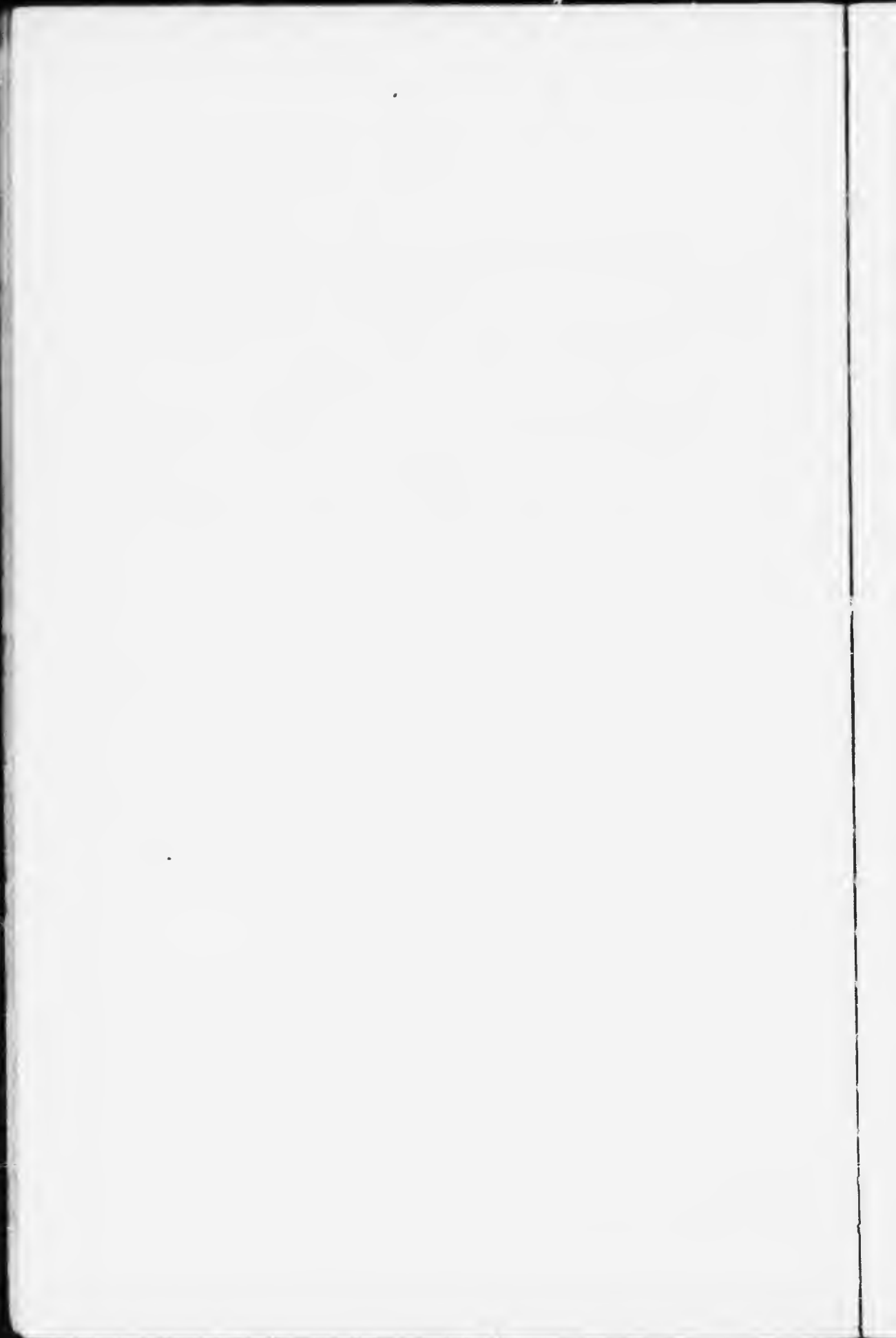
Lent by George Sumner, Esq.

**ZIEM (Felix François) H.C** .....Paris

MEDALS :—Salon, 1851, 1852, 1855. Legion of Honour, 1857.  
Officer in 1878.

54—Constantinople

Lent by the Estate A. Wilson.





THE PRESIDENT and COUNCIL  
of the Art Association desire to  
offer their sincere thanks to the  
owners of the valuable Works so kindly  
loaned for this Exhibition.

