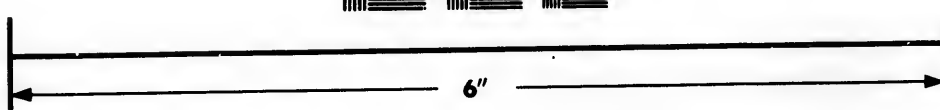
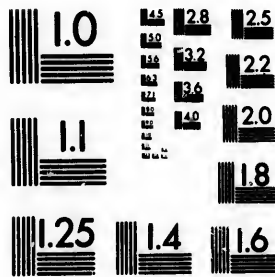


**IMAGE EVALUATION
TEST TARGET (MT-3)**



**Photographic
Sciences
Corporation**

23 WEST MAIN STREET
WEBSTER, N.Y. 14580
(716) 872-4500

**CIHM/ICMH
Microfiche
Series.**

**CIHM/ICMH
Collection de
microfiches.**



Canadian Institute for Historical Microreproductions / Institut canadien de microreproductions historiques

© 1985

Technical and Bibliographic Notes/Notes techniques et bibliographiques

The Institute has attempted to obtain the best original copy available for filming. Features of this copy which may be bibliographically unique, which may alter any of the images in the reproduction, or which may significantly change the usual method of filming, are checked below.

L'Institut a microfilmé le meilleur exemplaire qu'il lui a été possible de se procurer. Les détails de cet exemplaire qui sont peut-être uniques du point de vue bibliographique, qui peuvent modifier une image reproduite, ou qui peuvent exiger une modification dans la méthode normale de filmage sont indiqués ci-dessous.

- Coloured covers/
Couverture de couleur
- Covers damaged/
Couverture endommagée
- Covers restored and/or laminated/
Couverture restaurée et/ou pelliculée
- Cover title missing/
Le titre de couverture manque
- Coloured maps/
Cartes géographiques en couleur
- Coloured ink (i.e. other than blue or black)/
Encre de couleur (i.e. autre que bleue ou noire)
- Coloured plates and/or illustrations/
Planches et/ou illustrations en couleur
- Bound with other material/
Relié avec d'autres documents
- Tight binding may cause shadows or distortion along interior margin/
La reliure serrée peut causer de l'ombre ou de la distortion le long de la marge intérieure
- Blank leaves added during restoration may appear within the text. Whenever possible, these have been omitted from filming/
Il se peut que certaines pages blanches ajoutées lors d'une restauration apparaissent dans le texte, mais, lorsque cela était possible, ces pages n'ont pas été filmées.
- Additional comments:/
Commentaires supplémentaires:

- Coloured pages/
Pages de couleur
- Pages damaged/
Pages endommagées
- Pages restored and/or laminated/
Pages restaurées et/ou pelliculées
- Pages discoloured, stained or foxed/
Pages décolorées, tachetées ou piquées
- Pages detached/
Pages détachées
- Showthrough/
Transparence
- Quality of print varies/
Qualité inégale de l'impression
- Includes supplementary material/
Comprend du matériel supplémentaire
- Only edition available/
Seule édition disponible
- Pages wholly or partially obscured by errata slips, tissues, etc., have been refilmed to ensure the best possible image/
Les pages totalement ou partiellement obscurcies par un feuillet d'errata, une pelure, etc., ont été filmées à nouveau de façon à obtenir la meilleure image possible.

This item is filmed at the reduction ratio checked below/
Ce document est filmé au taux de réduction indiqué ci-dessous.

10X	12X	14X	16X	18X	20X	22X	24X	26X	28X	30X	32X
			✓								

The copy filmed here has been reproduced thanks to the generosity of:

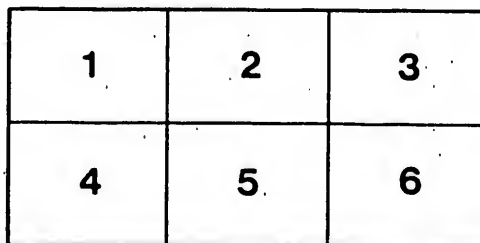
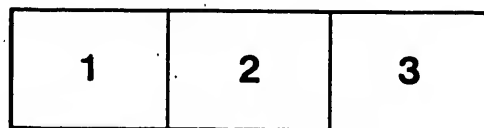
Seminary of Quebec
Library

The images appearing here are the best quality possible considering the condition and legibility of the original copy and in keeping with the filming contract specifications.

Original copies in printed paper covers are filmed beginning with the front cover and ending on the last page with a printed or illustrated impression, or the back cover when appropriate. All other original copies are filmed beginning on the first page with a printed or illustrated impression, and ending on the last page with a printed or illustrated impression.

The last recorded frame on each microfiche shall contain the symbol \rightarrow (meaning "CONTINUED"), or the symbol ∇ (meaning "END"), whichever applies.

Maps, plates, charts, etc., may be filmed at different reduction ratios. Those too large to be entirely included in one exposure are filmed beginning in the upper left hand corner, left to right and top to bottom, as many frames as required. The following diagrams illustrate the method:



L'exemplaire filmé fut reproduit grâce à la générosité de:

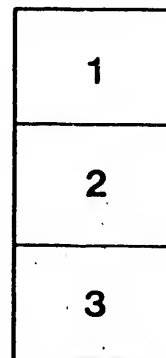
Séminaire de Québec
Bibliothèque

Les images suivantes ont été reproduites avec le plus grand soin, compte tenu de la condition et de la netteté de l'exemplaire filmé, et en conformité avec les conditions du contrat de filmage.

Les exemplaires originaux dont la couverture en papier est imprimée sont filmés en commençant par le premier plat et en terminant soit par la dernière page qui comporte une empreinte d'impression ou d'illustration, soit par le second plat, selon le cas. Tous les autres exemplaires originaux sont filmés en commençant par la première page qui comporte une empreinte d'impression ou d'illustration et en terminant par la dernière page qui comporte une telle empreinte.

Un des symboles suivants apparaîtra sur la dernière image de chaque microfiche, selon le cas: le symbole \rightarrow signifie "A SUIVRE", le symbole ∇ signifie "FIN".

Les cartes, planches, tableaux, etc., peuvent être filmés à des taux de réduction différents. Lorsque le document est trop grand pour être reproduit en un seul cliché, il est filmé à partir de l'angle supérieur gauche, de gauche à droite, et de haut en bas, en prenant le nombre d'images nécessaire. Les diagrammes suivants illustrent la méthode.



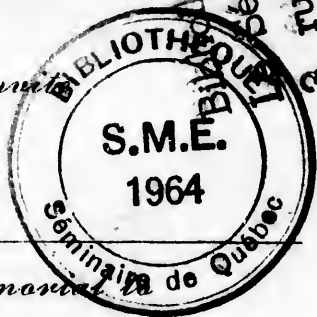
286, Broq. can. 1125

The Canadian Pacific Railway

and

Canadian Pacific Steamships Limited

have the honour to invite



to the unveiling of a Memorial

Abraham Martin

first King's Pilot on the St. Lawrence
and first known Canadian of Scotch descent

on

Saturday, May Twelfth at Eleven thirty a.m.

at the Harbour of Quebec

near the Canadian Pacific Sheds



Bibliothèque de l'Université,
3, rue de l'Université,
Québec 4, Q.U.E.

FOR over three hundred years the St. Lawrence River has been the great waterway into the interior of the American Continent. It was the route by which La Salle, Marquette, Joliette, Hennepin and Dul'hut penetrated to Lake Michigan, although a round-about passage had to be taken up the Ottawa and Mattawa Rivers over Lake Nipissing into Lake Huron to avoid the hostile Indians below Lake Erie.

The first known pilot on the St. Lawrence was Abraham Martin, after whom the Plains of Abraham at Quebec are named. In the Jesuit Relations, Abraham Martin is referred to as "dit l'Ecoissais" or "called the Scot," so that in addition to being the first pilot of the King of France he was also the first known Canadian of Scotch descent. Although married to a French woman and very possibly born in France, Abraham Martin was no doubt descended from one of the numerous soldiers of fortune who fought in the Army of the French King, and perhaps formed one of the Scots Guard which became famous in the days of Louis the Eleventh. Colonel Alexander Fraser of Toronto has evidence to show that the family of Abraham Martin belonged to Perthshire in Scotland.

The Plains of Abraham are named from the grant of land which Abraham Martin received from Samuel de Champlain in 1617 at the time of the settlement of Quebec. Louis

Hébert, the most famous of the first colonists of Canada, received a grant of land alongside at the same time. Abraham Martin undoubtedly cultivated his own farm, but apparently was also a carpenter and took sufficient interest in shipping to get the appointment of King's Pilot.

The Canadian Pacific Railway, in view of its great steamship interests, has decided to erect a simple but artistic Memorial to Abraham Martin, which has been designed by Henri Hébert, the well-known French-Canadian sculptor, who is connected with the original Louis Hébert, and thus is particularly fitted to design the Memorial. This is of granite and shows a pillar crowned by a globe of the world, supported by thistles. Carved in low relief is the Lily of France rising out of the sea. The inscription is in both French and English. An appropriate site has kindly been granted by the Quebec Harbour Commissioners. The architect is J. Roxburgh Smith.



Monument erected by the Canadian Pacific to Abraham Martin, the first known Canadian of Scotch descent and the first King's Pilot in Canada.

