

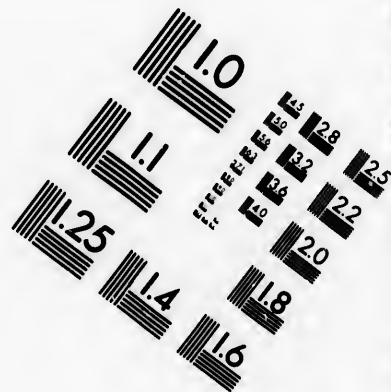
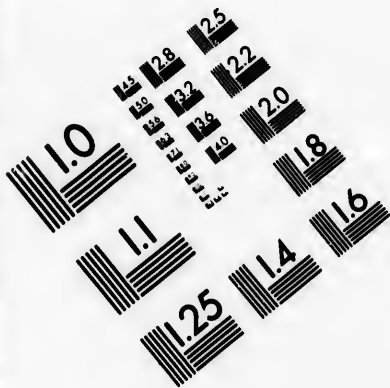
**CIHM/ICMH
Microfiche
Series.**

**CIHM/ICMH
Collection de
microfiches.**

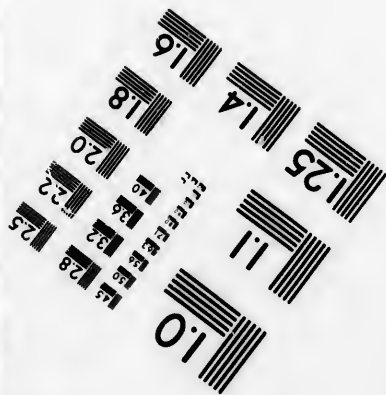
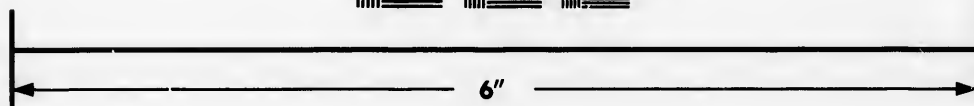
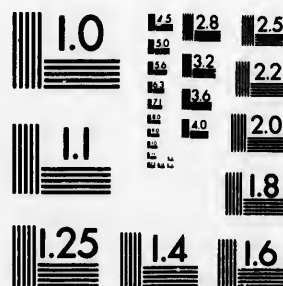


Canadian Institute for Historical Microreproductions / Institut canadien de microreproductions historiques

© 1982



**IMAGE EVALUATION
TEST TARGET (MT-3)**



**Photographic
Sciences
Corporation**

23 WEST MAIN STREET
WEBSTER, N.Y. 14580
(716) 872-4503

Technical and Bibliographic Notes/Notes techniques et bibliographiques

The Institute has attempted to obtain the best original copy available for filming. Features of this copy which may be bibliographically unique, which may alter any of the images in the reproduction, or which may significantly change the usual method of filming, are checked below.

L'Institut a microfilmé le meilleur exemplaire qu'il lui a été possible de se procurer. Les détails de cet exemplaire qui sont peut-être uniques du point de vue bibliographique, qui peuvent modifier une image reproduite, ou qui peuvent exiger une modification dans la méthode normale de filmage sont indiqués ci-dessous.

Coloured covers/
Couverture de couleur

Covers damaged/
Couverture endommagée

Covers restored and/or laminated/
Couverture restaurée et/ou pelliculée

Cover title missing/
Le titre de couverture manque

Coloured maps/
Cartes géographiques en couleur

Coloured ink (i.e. other than blue or black)/
Encre de couleur (i.e. autre que bleue ou noire)

Coloured plates and/or illustrations/
Planches et/ou illustrations en couleur

Bound with other material/
Relié avec d'autres documents

Tight binding may cause shadows or distortion along interior margin/
La reliure serrée peut causer de l'ombre ou de la distortion le long de la marge intérieure

Blank leaves added during restoration may appear within the text. Whenever possible, these have been omitted from filming/
Il se peut que certaines pages blanches ajoutées lors d'une restauration apparaissent dans le texte, mais, lorsque cela était possible, ces pages n'ont pas été filmées.

Additional comments:/
Commentaires supplémentaires:

Coloured pages/
Pages de couleur

Pages damaged/
Pages endommagées

Pages restored and/or laminated/
Pages restaurées et/ou pelliculées

Pages discoloured, stained or foxed/
Pages décolorées, tachetées ou piquées

Pages detached/
Pages détachées

Showthrough/
Transparence

Quality of print varies/
Qualité inégale de l'impression

Includes supplementary material/
Comprend du matériel supplémentaire

Only edition available/
Seule édition disponible

Pages wholly or partially obscured by errata slips, tissues, etc., have been refilmed to ensure the best possible image/
Les pages totalement ou partiellement obscurcies par un feuillet d'errata, une pelure, etc., ont été filmées à nouveau de façon à obtenir la meilleure image possible.

This item is filmed at the reduction ratio checked below/
Ce document est filmé au taux de réduction indiqué ci-dessous.

10X	12X	14X	16X	18X	20X	22X	24X	26X	28X	30X	32X
<input type="checkbox"/>	<input type="checkbox"/>	<input type="checkbox"/>	<input type="checkbox"/>	<input type="checkbox"/>	<input type="checkbox"/>	<input type="checkbox"/>	<input checked="" type="checkbox"/>	<input type="checkbox"/>	<input type="checkbox"/>	<input type="checkbox"/>	<input type="checkbox"/>

The copy filmed here has been reproduced thanks to the generosity of:

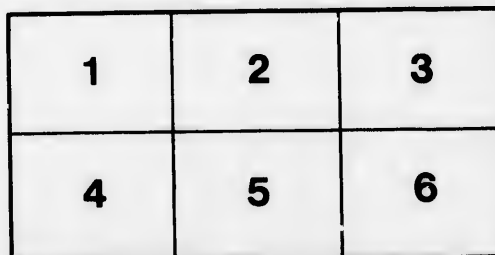
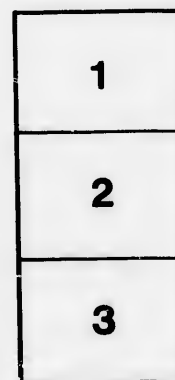
Library of Congress
Photoduplication Service

The images appearing here are the best quality possible considering the condition and legibility of the original copy and in keeping with the filming contract specifications.

Original copies in printed paper covers are filmed beginning with the front cover and ending on the last page with a printed or illustrated impression, or the back cover when appropriate. All other original copies are filmed beginning on the first page with a printed or illustrated impression, and ending on the last page with a printed or illustrated impression.

The last recorded frame on each microfiche shall contain the symbol \rightarrow (meaning "CONTINUED"), or the symbol ∇ (meaning "END"), whichever applies.

Maps, plates, charts, etc., may be filmed at different reduction ratios. Those too large to be entirely included in one exposure are filmed beginning in the upper left hand corner, left to right and top to bottom, as many frames as required. The following diagrams illustrate the method:



L'exemplaire filmé fut reproduit grâce à la générosité de:

Library of Congress
Photoduplication Service

Les images suivantes ont été reproduites avec le plus grand soin, compte tenu de la condition et de la netteté de l'exemplaire filmé, et en conformité avec les conditions du contrat de filmage.

Les exemplaires originaux dont la couverture en papier est imprimée sont filmés en commençant par le premier plat et en terminant soit par la dernière page qui comporte une empreinte d'impression ou d'illustration, soit par le second plat, selon le cas. Tous les autres exemplaires originaux sont filmés en commençant par la première page qui comporte une empreinte d'impression ou d'illustration et en terminant par la dernière page qui comporte une telle empreinte.

Un des symboles suivants apparaîtra sur la dernière image de chaque microfiche, selon le cas: le symbole \rightarrow signifie "A SUIVRE", le symbole ∇ signifie "FIN".

Les cartes, planches, tableaux, etc., peuvent être filmés à des taux de réduction différents. Lorsque le document est trop grand pour être reproduit en un seul cliché, il est filmé à partir de l'angle supérieur gauche, de gauche à droite, et de haut en bas, en prenant le nombre d'images nécessaire. Les diagrammes suivants illustrent la méthode.

ails
du
odifier
une
image

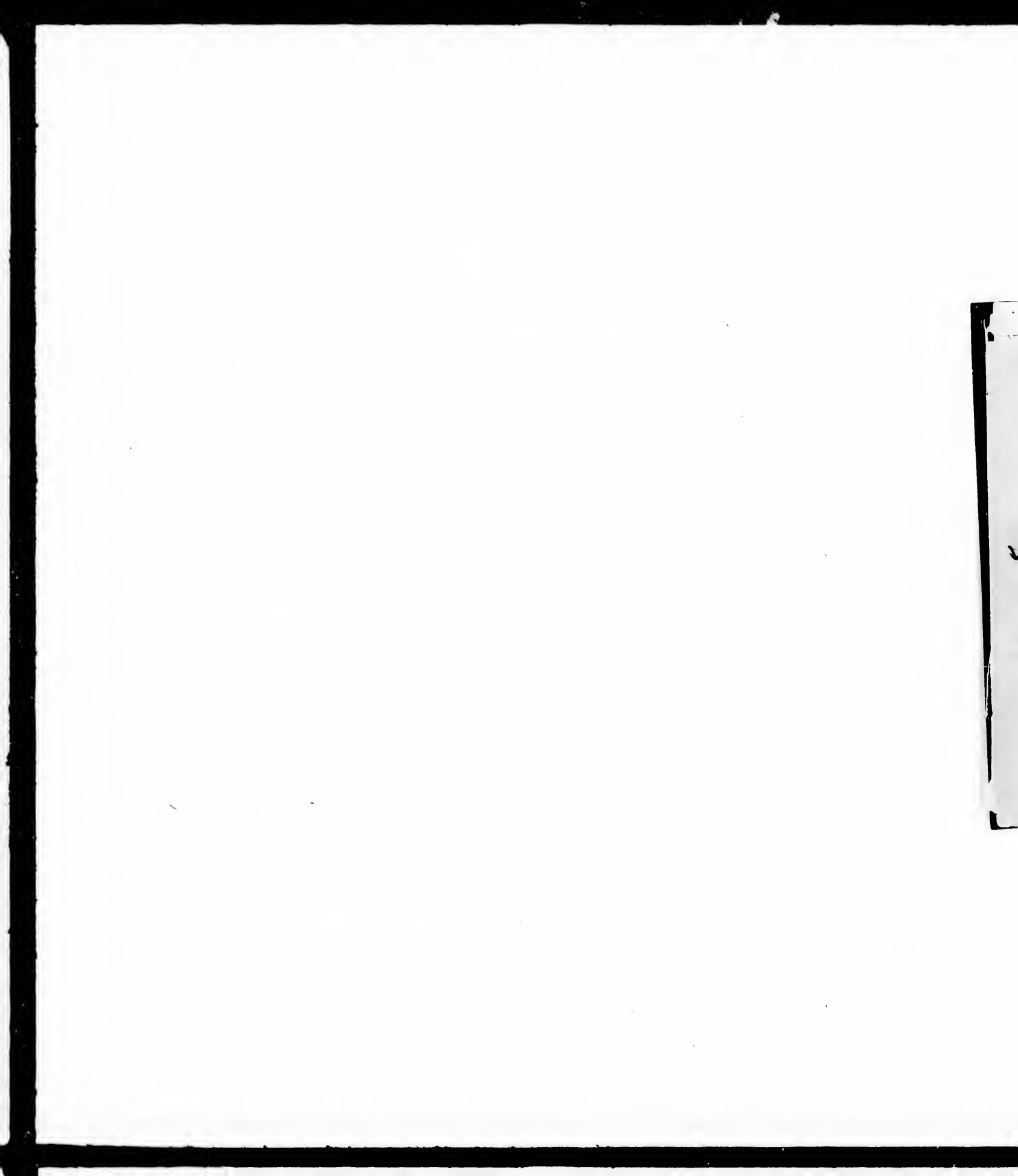
s

errata
to

a pelure,
on à



32X



SF327
G65

RACING
✓ GOODWIN'S
COLORS



The highest grade in the World.

"CARTE BLANCHE,"
A magnificent Rich Wine.

"GRAND VIN SEC,"
Perfection of a Dry Wine.

Acknowledged by Connoisseurs to be the finest Champagne imported into the United States.

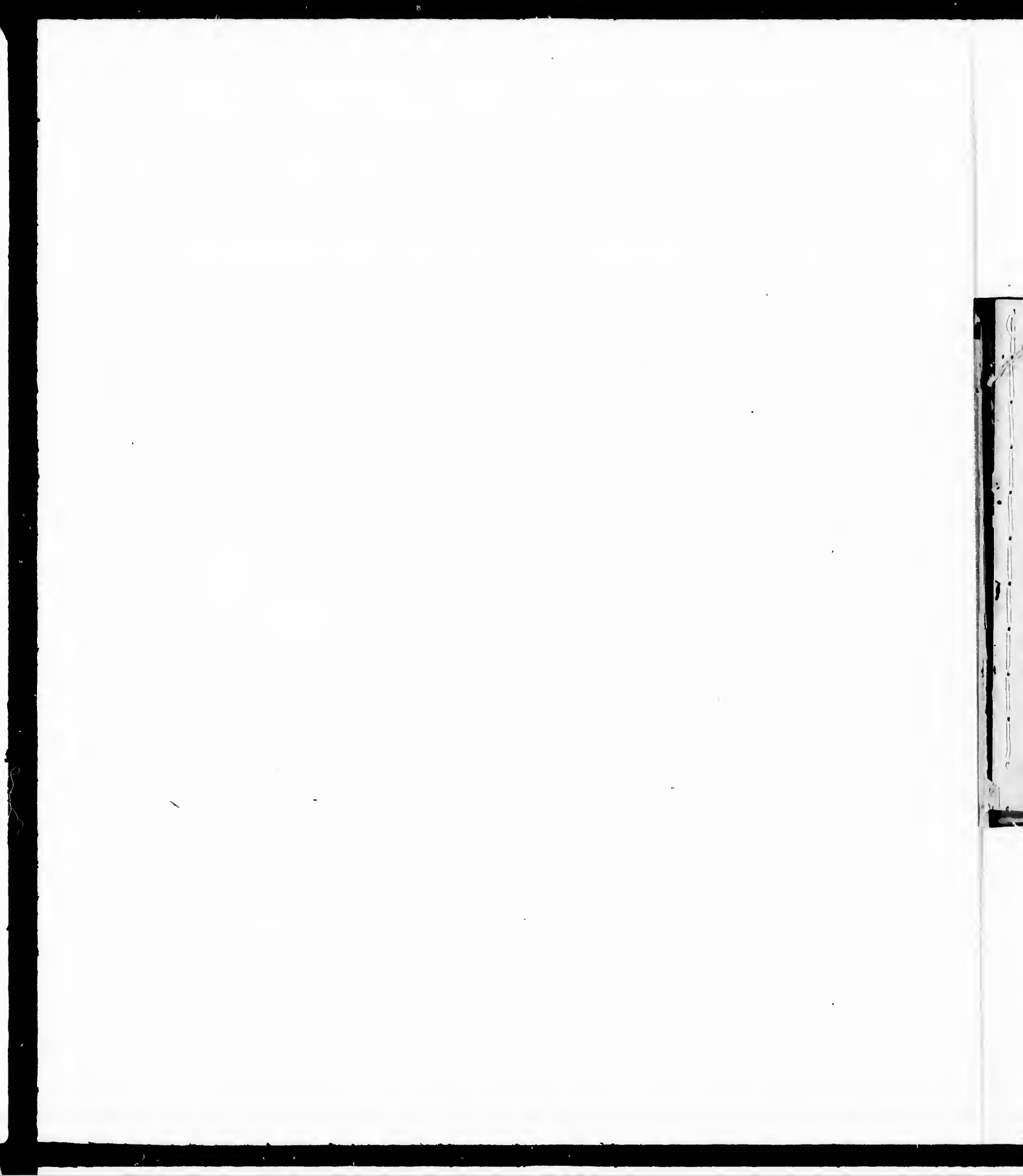
Sold by the leading Wine Merchants and Grocers, and to be had at all the Clubs, Hotels and Restaurants.

Orders solicited from the trade by the Agents.

ALEX. D. SHAW & CO., 58 Broad Street, New York.



the World.
"D VIN SEC,"
son of a Dry Wine.
page imported into
d to be had at all the
the Agents,
reet, New York.



GOODWIN'S
" RACING COLORS

OF THE

UNITED STATES AND CANADA.

15
42
9.
Revised and Enlarged Edition.

✓
GOODWIN BROS.,

PUBLISHERS,

MARCH, 1888.

241 BROADWAY, NEW YORK.

(1888)



291/00 SF 327
.G 65
Rising Colors

Entered according to Act of Congress, in the year 1888, by
GOODWIN BROS.,
In the Office of the Librarian of Congress, at Washington, D. C.

49/12

SF327
.G65

21,6412
H1912

To the Public.

The accompanying pages, comprising 1160 Racing Colors, we take pleasure in offering to the American public, as a revised, enlarged and improved compilation from the list which appeared in our "Official Annual Turf Guide."

We present this work, gotten up in an ENTIRELY DIFFERENT manner from the old stereotyped methods, and think we can lay claim to being the first to give to the public a work of this nature, compiled in the manner herewith presented.

The novelty of our system consists in having a "List of Colors," numbered and arranged in alphabetical order, with owners names

gress, in the year 1888, by
ROS.,
ngress, at Washington, D. C.

appended. In addition there is an Index in the form of an alphabetized "List of Owners," also having numbers attached to their names, corresponding with the figures in the "List of Colors."

The utility of this arrangement is obvious, as it enables one to determine, at a glance, whether a certain set of colors is already in use, whether one or more persons are using the same set, or what the colors are of any one individual.

By this means, not only is the old method of wading through many hundred names avoided, but a great deal of labor, and frequently valuable time, saved.

We believe, therefore, the public will duly appreciate our labors in the issuing of the present work.

GOODWIN BROS.

L
inac
1
2
3
4
5
6
7
8
9
10
11
12
13
14
15
16
17
18
19
20
21
22

There is an Index in
"List of Owners,"
attached to their names,
and references in the "List of

Management is obvious,
and, at a glance,
the colors is already in
the persons are using
the colors are of any one

is the old method
of hundred names
of labor, and fre-

and.
The public will duly
the issuing of the

EDWIN BROS.

LIST OF COLORS.

We shall be glad to have our attention drawn to any inaccuracies which may exist in the subjoined list.

- 1 Black.....H. Brown
- 2 Black.....D. D. Withers
- 3 Black.....D. Gibson
- 4 Black.....J. Merritt
- 5 Black.....L. M. Spafford
- 6 Black and Canary, Pk Sash, Canary Cap....Lakeview Stable
- 7 Black and Canary, Red Sash and Cap.....F. Berninger
- 8 Black and Canary, Red Sash and Cap.....S. M. Sexton
- 9 Black and Cream Stripes.....M. Batman
- 10 Black and Gold.....J. H. Dillard
- 11 Black and Old Gold, Gold Sash.....Chicago Stable
- 12 Black and Orange Stripes.....W. M. Niver
- 13 Black and Orange Stripes.....Bidleman & Evans
- 14 Black and Red.....M. E. Stratton
- 15 Black and Red.....D. Heard
- 16 Black and Red Stripes.....W. Bright
- 17 Black and Red Stripes, Red Sash and Cap.....G. Force
- 18 Black and Red, White Sash.....C. Moore
- 19 Black and White.....W. McClelland
- 20 Black and White Stripes.....J. S. Allan
- 21 Black and White Stripes.....H. McCarron, Jr.
- 22 Black and White Stripes, Black Cap.....L. L. Lorillard

23	Black and Yel Stripes, Blk and Red Cap....	R. J. Hutchinson	55	B
24	Black, Black and White Cap.....	L. H. Davies	56	B
25	Black, Blk and Yellow Sleeves, Blk Cap....	Wm. M. Brady	57	B
26	Black, Blk and Orange Sleeves, White Cap...	J. D. Pulford	58	E
27	Black, Blue and Purple.....	J. B. Weigart	59	E
28	Black, Blue Cap.....	W. H. Bliss	60	I
29	Black, Blue Cap.....	A. Anderson	61	I
30	Black, Blue Hoops.....	Jordan & Martin	62	I
31	Black, Blue Sash, Black Cap.....	H. F. Oots	63	I
32	Black, Blue Sash, Silver Cap.....	Jno. Hannigan	64	I
33	Black, Blue Sash, White Cap.....	Spring Valley Stable	65	I
34	Black, Blue Sleeves, White Cap.....	J. W. Mitchell	66	I
35	Black, Canary Sleeves and Cap.....	J. Willingmeyer	67	I
36	Black, Canary Sleeves and Cap.....	Ramapo Stable	68	I
37	Black, Canary Stripes, Black Cap.....	C. Littlefield	69	I
38	Black, Cherry Hoops.....	J. T. Stewart & Son	70	I
39	Black, Cherry Hoops on Sleeves.....	E. Sleight	71	I
40	Black, Cherry Sleeves, Orange Cap... ,	A. J. Evans	72	I
41	Black, Cherry Stripes.....	W. M. Ashlock	73	I
42	Black, Cherry Stripes.....	W. L. Cassidy	74	I
43	Black, Cream Bands, Black and Cr. Cap.....	J. B. Chase	75	I
44	Black, Cri'son Hoops on Sleeves, Blk and Cr. Cap...	H. Carcy	76	I
45	Black, Gold Braid.....	J. Sanford	77	I
46	Black, Gold Braid, Orange Cap.....	W. C. Sanford	78	I
47	Black, Gold Cap.....	Coburn & Co.	79	I
48	Black, Gold Hoops.....	L. A. Legg	80	I
49	Black, Gold Sleeves and Cap.....	Jas. Peene	81	I
50	Black, Gold Sleeves and Cap.....	Paragon Stable	82	I
51	Black, Gold Sleeves and Cap... ..	W. C. Callahan	83	I
52	Black, Gold Sleeves and Cap ..	P. J. Carmody	84	I
53	Black, Gold Stars.....	D. Campbell	85	I
54	Black, Gold Stars.....	Lone Star Stable	86	I

ap....R. J. Hutchinson
L. H. Davies
 Cap....Wm. M. Brady
 te Cap...J. D. Pulford
J. B. Weigart
W. H. Bliss
A. Anderson
Jordan & Martin
H. F. Oots
Jno. Hannigan
Spring Valley Stable
J. W. Mitchell
J. Willingmeyer
Ramapo Stable
C. Littlefield
J. T. Stewart & Son
E. Sleight
A. J. Evans
W. M. Ashlock
W. L. Cassidy
 Cap.....J. B. Chase
 and Cr. Cap...H. Carey
J. Sanford
W. C. Sanford
Coburn & Co.
L. A. Legg
Jas. Peene
Paragon Stable
W. C. Callahan
P. J. Carmody
D. Campbell
Lone Star Stable

55 Black, Gold Stripes, Orange Cap.....G. F. Foster, Jr.
 56 Black, Green Cap.....J. M. Broadwell
 57 Black, Green Sash and Cap.....W. B. Lambert
 58 Black, Green Sash, Blk and Green Cap.....B. C. Randall
 59 Black, Green Sash, Old Gold Cap.....Mahwah Stable
 60 Black, Green Sleeves and Cap.....Jas. F. Davis
 61 Black, Green Sleeves and Cap.....M. L. Mitchell
 62 Black, Green Sleeves and Cap.....J. H. Whitely & Co.
 63 Black, Green Sleeves, Red Sash, Blue Cap.....J. Stout
 64 Black, Gn Sleeves, Rd Sash, Rd and Gn Cap...R. H. Spriggs
 65 Black, Green Sleeves, Red Sash, Red and
 Green Cap.....West Side Stable
 66 Black, Magenta Sleeves and Cap.....Thos. Little
 67 Black, Old Gold Cuffs and Cap.....C. F. Armstrong
 68 Black, Old Gold Sleeves and Cap.....Westmont Stable
 69 Black, Old Gold Sleeves and Cap.....F. R. Stewart
 70 Black, Old Gold Sleeves, Blk and O. G. Cap....A. Worley
 71 Black, Old Gd Sleeves, Blk and O. G. Cap..Snowball Stable
 72 Black, Old Gd Sleeves, Blk and O. G. Cap...W. S. Bortner
 73 Black, Orange Bars, Green Cap.....Wm. M. Brady
 74 Black, Orange Cap.....C. K. Doty
 75 Black, Orange Cap.....T. M. Berry
 76 Black, Orange Cap.....T. H. Stevens
 77 Black, Orange Cap.....B. B. Million
 78 Black, Orange Hoops.....Davis & Co.
 79 Black, Orange Hoops, Black and Orange Cap.....J. Bebus
 80 Black, Orange Sash and Bars, Black and
 Orange Cap.....G. V. Hankins
 81 Black, Orange Cap and Sash.....J. M. Jeffcot
 82 Black, Orange Sash, Black and Orange Cap.....J. B. Chase
 83 Black, Orange Sash, Black and Orange Cap..J. S. Shawhan
 84 Black, Orange Sleeves and Cap.....J. P. Bidleman

85	Black, Orange Sleeves and Cap...	Dalrymple & Alexander	117	B
86	Black, Orange Sleeves and Cap.....	P. A. Brady	118	B
87	Black, Orange Sleeves, Blk Bars, Orange Cap...	D. Abrams	119	B
88	Black, Orange Sleeves, Red Cap.....	W. M. Ashlock	120	B
89	Black, Orange Spots.....	R. J. Lucas	121	B
90	Black, Red and Yellow.....	W. Gratz	122	B
91	Black, Red Bars on Sleeves, Red Sash and Cap...	E. Storms	123	F
92	Black, Red Bars, Red Sash and Cap.....	C. L. Haas	124	F
93	Black, Red Bars, Red Sash and Cap.....	W. M. Owens	125	F
94	Black, Red Bars, Red Sash, Black Cap.....	Ed. Sterns	126	F
95	Black, Red Cap.....	Wiley Buckles	127	F
96	Black, Red Cap.....	C. F. Armstrong	128	F
97	Black, Red Cap.....	J. F. Walden	129	F
98	Black, Red Cap.....	W. D. Phillips	130	F
99	Black, Red Cords and Cuffs, Black Cap...	Cotton & Boyle	131	F
100	Black, Rd Cuffs and Collar, Blk and Rd Cap...	J. C. Smith	132	F
101	Black, Red Maltese Cross, Sash and Cap.....	E. J. Baldwin	133	F
102	Black, Red Polka Dots.....	E. Storm	134	F
103	Black, Red Polka Dots, Yellow Cap.....	Brannon & Cohen	135	F
104	Black, Red Sash and Cap.....	J. T. Williams	136	F
105	Black, Red Sash and Hoops.....	F. Jones	137	F
106	Black, Red Sash, Black and Red Cap.....	J. White & Co.	138	F
107	Black, Red Sash, Cross and Cap.....	A. G. McCampbell	139	F
108	Black, Red Sash, Cuffs and Cap.....	L. H. Todhunter	140	F
109	Black, Red Sash, Cuffs and Cap.....	W. L. Collins & Co.	141	F
110	Black, Red Sleeves.....	B. Murphy	142	F
111	Black, Red Sleeves.....	P. P. Robson	143	F
112	Black, Red Sleeves.....	Glenmore Stable	144	F
113	Black, Red Sleeves and Cap, White Sash...	S. E. Holloway	145	F
114	Black, Red Sleeves, Black and Red Cap.....	Ray & McEvoy	146	F
115	Black, Red Sleeves, Blue and Red Cap.....	Pallsade Stable	147	F
116	Black, Red Sleeves, Wh. Hoops, Blk Cap.	Queens Co. Stable	148	F

Walrymple & Alexander	117	Black, Red Sleeves, White Sash and Cap.....	Al. Caskey
.....P. A. Brady	118	Black, Red Sleeves, Wh. Sash, Orange Cap...	P. W. Brown
Orange Cap...D. Abrams	119	Black, Red Sleeves, Wh. Sash, Blk and Wh. Cap..	Al. Caskey
.....W. M. Ashlock	120	Black, Red Sleeves, Yellow Cap.....	R. Le Fevre
.....R. J. Lucas	121	Black, Red Sleeves, Yellow Cap..	Turf Stable
.....W. Gratz	122	Black, Red Stripes and Sleeves, Or'ge Cap..	Hopedale Stable
h and Cap...E. Storms	123	Black, Scarlet Sleeves and Cap.....	Wm. M. Conner
.....C. L. Haas	124	Black, Tan Sleeves, Crimson Cap.....	J. J. Hyland
.....W. M. Owens	125	Black, White Cap.....	Orlolo Stable
Cap.....Ed. Sterns	126	Black, White Cuffs and Cap.....	J. E. McDonald
.....Wiley Buckles	127	Black, White Diamonds, Blue Cap.....	C. J. Garrison
.....C. F. Armstrong	128	Black, White Diamonds, Blue Cap.....	P. D. Crumie
.....J. F. Walden	129	Black, White Diamonds, Blue Cap.....	J. Coonley
.....W. D. Phillips	130	Black, White Diamonds, Red Cap.....	W. R. Cook
Cap...Cotton & Boyle	131	Black, White Sash and Cap.....	W. H. Maddox
Rd Cap...J. C. Smith	132	Black, White Sash and Cap.....	S. Strauss
Cap...E. J. Baldwin	133	Black, White Sash and Cap.....	T. French
.....E. Storm	134	Black, White Sleeves and Cap.....	G. Campbell
.....Brannon & Cohen	135	Black, White Sleeves and Sash.....	A. Smith
.....J. T. Williams	136	Black, White Stripes and Cap.....	O. O. West, Jr.
.....F. Jones	137	Black, White Sleeves, Black Cap.....	W. Lakeland
.....J. White & Co.	138	Black, White Sleeves, Chery Cap.....	F. A. Jones
.....A. G. McCampbell	139	Black, White Sleeves, Red Cap.....	Brighton Stable
.....L. H. Todhunter	140	Black, White Sleeves, Red Cap.....	J. Johnson
.....W. L. Collins & Co.	141	Black, White Sleeves, Red Cap.....	E. J. Mitchell
.....B. Murphy	142	Black, White Sleeves, Yel. Sash, Blk Cap..	J. W. Dempsey
.....P. P. Robson	143	Black, with Horseshoes.....	G. D. Doremus
.....Glenmore Stable	144	Black, with White Sleeves, Red Cap...	Hurstbourne Stable
Sash...S. E. Holloway	145	Black, Yellow Cap.....	D. Meredith
Cap...Ray & McEvoy	146	Black, Yellow Cap.....	R. Bradley
ap...Pallsade Stable	147	Black, Yellow Sash.....	W. F. Weld
Cap. Queens Co. Stable	148	Black, Yellow Sash, Black and Yellow Cap...	J. E. Segrain

149	Black, Yellow Sleeves, Cherry Cap.....	Jas. Galway	181
150	Black, Yellow Sleeves and Cap.....	Geo. Work	182
151	Black, Yellow Spots.....	J. D. Cheever	183
152	Black, Yellow Spots.....	Rockaway Stable	184
153	Black, Yellow Stripes.....	J. B. Givens	185
154	Blue.....	Alexander & Co.	186
155	Blue.....	Ch. E. Allen	187
156	Blue.....	Beck & Co.	188
157	Blue.....	H. W. Bellew	189
158	Blue.....	L. W. Benson	190
159	Blue.....	Campbell & Co.	191
160	Blue.....	Congress Stable	192
161	Blue.....	L. Ellmore	193
162	Blue.....	Feeny & Gillespie	194
163	Blue.....	Al. Hankins	195
164	Blue.....	W. Hayes	196
165	Blue.....	M. J. Leonard	197
166	Blue.....	R. J. Persons	198
167	Blue.....	J. S. Peters	199
168	Blue.....	W. Pinto	200
169	Blue.....	Wm. Sanford	201
170	Blue.....	W. L. Seddens	202
171	Blue.....	M. Smith	203
172	Blue.....	Thayer & Co.	204
173	Blue.....	B. E. Wilkerson	205
174	Blue and Black Stripes.....	C. Levinus	206
175	Blue and Bronze Stripes, Bronze Cap.....	Loughran & Co.	207
176	Blue and Gold.....	P. Chapman	208
177	Blue and Gray Halves, Green Cap.....	N. Casey	209
178	Blue and Green, with Red Dots.....	E. L. Carmichael	210
179	Blue and Orange.....	W. H. Williamson	211
180	Blue and Orange, Green Sash.....	J. J. Bevins	211

.....Jas. Galway	181	Blue and Orange, White Sleeves and Cap.....	P. P. Porter
.....Geo. Work	182	Blue and Pink.....	F. P. Porter
.....J. D. Cheever	183	Blue and Red.....	B. V. Martin
.....Rockaway Stable	184	Blue and Red, Gold Band.....	G. W. Bowen & Co.
.....J. B. Givens	185	Blue and Red, Red Bars on Sleeves...	G. W. Bowen & Co.
.....Alexander & Co.	186	Blue and White.....	L. J. Garrett
.....Ch. E. Allen	187	Blue and White, Red Stars.....	A. Burnham
.....Beck & Co.	188	Blue and White Stripes.....	C. Carroll
.....H. W. Bellew	189	Blue and White Stripes.....	R. C. Pate
.....L. W. Benson	190	Blue, Black Cap.....	Wellington Stable
.....Campbell & Co.	191	Blue, Black Cap.....	Jno. Nixon
.....Congress Stable	192	Blue, Black Cap.....	W. B. Clark
.....L. Ellmore	193	Blue, Black Sash.....	A. McCarthy, Sr.
.....Feeny & Gillespie	194	Blue, Black Sash, Blue Cap.....	Ganley & Co.
.....Al. Hankins	195	Blue, Black Sash, Blue Cap.....	J. Croker
.....W. Hayes	196	Blue, Black Sash, Red Cap.....	W. Boyle
.....M. J. Leonard	197	Blue, Black Sleeves.....	R. Tucker
.....R. J. Persons	198	Blue, Black Sleeves, Blue and Blk Cap..	R. T. Kirkpatrick
.....J. S. Peters	199	Blue, Black Sleeves, Blue and Blk Cap.....	W. Arnett
.....W. Pinto	200	Blue, Black Stripes.....	L. Kessler
.....Wm. Sanford	201	Blue, Blue and Red Cap.....	A. Martin
.....W. L. Seddens	202	Blue, Blue and White Cap... ..	J. B. Davis
.....M. Smith	203	Blue, Blue and White Cap.....	Davis & Rucker
.....Thayer & Co.	204	Blue, Canary Cap.....	S. Emery & Co.
.....B. E. Wilkerson	205	Blue, Canary Hoops and Sleeves	T. A. Goodman
.....C. Levinus	206	Blue, Canary Hoops on Sleeves.....	G. R. Tompkins
Cap.....Loughran & Co.	207	Blue, Canary Sleeves and Spots, Game Chicken..	S. Bryant
.....P. Chapman	208	Blue, Canary Sleeves, Game Chicken.....	Geo. Scroggins
ap.....N. Casey	209	Blue, Cardinal Sash, Blue and Cardinal Cap..	C. Cavanagh
.....E. L. Carmichael	210	Blue, Cardinal Sash, Blue and Cardinal Cap.....	Magnolia Stable
.....W. H. Williamson	211	Blue, Cherry and Black Cap.....	J. Harris
.....J. J. Bevins			

213	Blue, Cherry Bars on Sleeves, White Cap.....	C. Murphy	248
218	Blue, Cherry Hoops on Sleeves, White Cap.....	A. W. Weingardt	244
214	Blue, Cherry Sleeves, Blue and Cherry Cap....	Wm. Boots	246
215	Blue, Cherry Sleeves, Blue Cap.....	H. Hentz, Jr.	247
216	Blue, Gold Sleeves and Cap.....	Jno. Davis	248
217	Blue, Gold Sleeves, Red Cap.....	T. Lathrop	249
218	Blue, Gold Spots.....	J. Daniels	250
219	Blue, Gold Stars.....	D. S. Baldwin	251
220	Blue, Gray Sash and Cap.....	W. P. & J. S. Cook	252
221	Blue, Gray Sleeves, Red Cap.....	J. J. Tompkins	253
222	Blue, Green Bars, Tricolor Cap.....	W. G. Brien, Jr.	254
223	Blue, Green Sash.....	G. D. Wilson	255
224	Blue, Green Sash.....	B. F. Pettit	256
225	Blue, Green Sash, Blue Cap.....	Thos. Chrysler	257
226	Blue, Green Sleeves and Cap.....	R. W. Thomas	258
227	Blue, Gray Sleeves and Cap.....	Applegate Bros.	259
228	Blue, Green Sleeves, Red Cap.....	S. Grimshaw	260
229	Blue, Green Sleeves, Red Polka Dots.....	C. Mahone	261
230	Blue, Old Gold Hoops.....	T. & J. Barrett	262
231	Blue, Old Gold Spots and Cap.....	N. H. Snyder & Co.	263
232	Blue, Old Gold Spots, Blue and Old Gold Cap....	J. Moran	264
233	Blue, Old Gold Stripes.....	J. De Long	265
234	Blue, Old Gold Stripes, Red Sash.....	R. H. Powers	266
235	Blue, Orange Cap.....	F. Hoyle	267
236	Blue, Orange Cap.....	H. Y. Johnson	268
237	Blue, Orange Cap.....	J. J. Merrill & Co.	269
238	Blue, Orange Cuffs and Cap.....	W. P. Burch	270
239	Blue, Orange Cuffs and Cap.....	S. L. Cooper	271
240	Blue, Orange Dots and Cap.....	B. Kahn	272
241	Blue, Orange Hoops and Cap.....	Boulevard Stable	273
242	Blue, Orange Sash.....	H. D. Markstone	274

e Cap.....C. Murphy
 White
A. W. Weingardt
 rry Cap....Wm. Boots
H. Hentz, Jr.
Jno. Davis
T. Lathrop
J. Daniels
D. S. Baldwin
W. P. & J. S. Cook
J. J. Tompkins
W. G. Brien, Jr.
G. D. Wilson
B. F. Petit
Thos. Crysler
R. W. Thomas
Applegate Bros.
S. Grimshaw
C. Mahone
T. & J. Barrett
N. H. Snyder & Co.
 d Gold Cap...J. Moran
J. De Long
R. H. Powers
F. Hoyle
H. Y. Johnson
J. J. Merrill & Co.
W. P. Burch
S. L. Cooper
B. Kahn
 Boulevard Stable
H. D. Markstone

243 Blue, Orange Sash, Blue and Orange Cap.....Jno. Henry
 244 Blue, Orange Sash, Blue and Orange Cap.....P. Tobin
 245 Blue, Orange Sash, Blue CapLeland Stanford
 246 Blue, Orange Sleeves.....W. M. Dodd
 247 Blue, Orange Sleeves.....N. Armstrong
 248 Blue, Orange Sleeves.....G. L. Hayden
 249 Blue, Orange Sleeves.....F. M. Lilly
 250 Blue, Orange Sleeves and Polka Dots,
 Blue and Orange Cap.....Scroggins and Bryant
 251 Blue, Orange Sleeves and Cap.....Mrs. G. L. Lorillard
 252 Blue, Orange Sleeves and Cap.....F. Corrigan
 253 Blue, Orange Sleeves and Cap.....J. M. Dukes
 254 Blue, Orange Sleeves and Cap.....R. A. Johnson & Co.
 255 Blue, Orange Sleeves, Blue BarsJ. W. Cook
 256 Blue, Orange Sleeves, Red Cap.....Walnut Grove Stable
 257 Blue, Orange Sleeves, White Sash and Cap...Bradley Bros.
 258 Blue, Orange Sleeves, White Sash and Cap....O. Bradley
 259 Blue, Orange Spots.....T. King
 260 Blue, Orange Spots, Blue and Old Gold Cap...J. L. Harris
 261 Blue, Orange Spots, Blue and Orange Cap.....S. Bryant
 262 Blue, Orange StarsJ. E. Cushing
 263 Blue, Orange Stars.....W. Hummel
 264 Blue, Pk Sash and Hoops, Blue and Pk Cap...F. P. Porter
 265 Blue, Pink Sleeves.....T. Carr
 266 Blue, Pink Sleeves, White Cap.....T. Watkins & Son
 267 Blue, Purple Stripes.....Lynch & Jones
 268 Blue, Red and White.....M. A. Johnson
 269 Blue, Red and White Sash, Red Cap.....W. H. Shadley
 270 Blue, Red and White Stars, White Cap..H. E. Kimbel & Co.
 271 Blue, Red and White Stripes, Black Cap..Mulkey & Keith
 272 Blue, Red BallC. H. Hurdic
 273 Blue, Red Ball on Back.....J. Riley & Co.

274	Blue, Red Ball on Back, Red Cap.....	Columbia Stable	806
275	Blue, Red and Blue Cap.....	E. Martin	807
276	Blue, Red Cap.....	T. Colgan	808
277	Blue, Red Cap.....	Geo. Gill	809
278	Blue, Red Cap.....	Horseshoe Stable	810
279	Blue, Red Cap.....	H. G. Root	811
280	Blue, Red Cap.....	Whittaker & Barry	812
281	Blue, Red Cap.....	Saratoga Stable	813
282	Blue, Red Cap, Gold Band.....	Clay & Woodford	814
283	Blue, Red Horseshoes.....	J. P. Banahan	815
284	Blue, Red Maltese Cross.....	G. S. Caldwell	816
285	Blue, Red Maltese Cross, Red Cap.....	E. W. Phillips	817
286	Blue, Red Sash.....	McIntyre & Swiney	818
287	Blue, Red Sash.....	W. Penn & Co.	819
288	Blue, Red Sash.....	W. M. Fuqua	820
289	Blue, Red Sash.....	H. D. Bellew	821
290	Blue, Red Sash and Cap.....	G. Doremus	822
291	Blue, Red Sash and Cap.....	Gay & Co.	823
292	Blue, Red Sash and Cap.....	W. H. Stevenson	824
293	Blue, Red Sash and Cap.....	E. G. Wachter	825
294	Blue, Red Sash and Sleeves, Blue Cap.....	M. T. Danaher	826
295	Blue, Red Sash, Hoops and Cap.....	W. Arlington	827
296	Blue, Red Sash, Sleeves and Cap.....	Spendthrift Stable	828
297	Blue, Red Sash, Old Gold Cap.....	W. R. Brannon	829
298	Blue, Red Sash, Old Gold and Red Cap.....	Newark Stable	830
299	Blue, Red Sash, White Cap.....	L. Knox	831
300	Blue, Red Sash, White Cap.....	J. S. Brannon & Son	832
301	Blue, Red Sash, White Cap.....	C. Weatherford	833
302	Blue, Red Sash, White Cap.....	Vanguard Stable	834
303	Blue, Red Sash, White Stars.....	Ch. Schlutius	835
304	Blue, Red Sleeves and Cap.....	W. R. Babcock	836
305	Blue, Red Sleeves, Blue and Red Cap.....	Carolina Stable	837

..... Columbia Stable	806 Blue, Red Sleeves, Gold Sash, Red Cap.....	Madison Stable
..... E. Martin	807 Blue, Red Sleeves, Green Cap.....	S. Grimshaw
..... T. Colgan	808 Blue, Red Sleeves, Green Cap.....	E. J. McElmeel
..... Geo. Gill	809 Blue, Red Sleeves, Orange Cap.....	C. B. Long
..... Horseshoe Stable	810 Blue, Red Sleeves, Sash and Cap.....	C. W. Bathgate
..... H. G. Root	811 Blue, Red Sleeves, Sash and Cap.....	J. Rowe & Co.
..... Whittaker & Barry	812 Blue, Red Sleeves, White Cap.....	R. H. Owens & Co.
..... Saratoga Stable	813 Blue, Red Spots.....	W. M. Murray
..... Clay & Woodford	814 Blue, Red Spots.....	P. Kempton
..... J. P. Banahan	815 Blue, Red Stripes on Sleeves, Red Cap.....	Ch. Wright
..... G. S. Caldwell	816 Blue, Scarlet Sleeves and Cap.....	J. Cotton
..... E. W. Phillips	817 Blue, Star on Back, Orange Sleeves, Red Cap.....	J. Gordon
..... McIntyre & Swiney	818 Blue Velvet.....	Mitchell & Price
..... W. Penn & Co.	819 Blue, White Anchor, Red Cap.....	J. Cochran
..... W. M. Fuqua	820 Blue, White Bars and Cap.....	W. O. Scully
..... H. D. Bellew	821 Blue, White Bars on Sleeves, White Cap.....	M. Young
..... G. Doremus	822 Blue, White Cap.....	Ch. E. Mahone
..... Gay & Co.	823 Blue, White Cap.....	S. E. Crouse
..... W. H. Stevenson	824 Blue, White Cap.....	W. Jennings
..... E. G. Wachter	825 Blue, White Cap.....	R. & N. Weisiger
Cap..... M. T. Danaher	826 Blue, White Cap.....	H. T. Batchelor
..... W. Arlington	827 Blue, White Cap.....	Jersey City Stable
..... Spendthrift Stable	828 Blue, White Collar and Cap.....	M. Kollmeyer
..... W. R. Brannon	829 Blue, White Crescent, Blue and White Cap.....	Jno B. Nixon
Cap..... Newark Stable	830 Blue, White Crescent, Blue and White Cap.....	J. Barry
..... L. Knox	831 Blue, White Crescent, Blue and White Cap.....	R. Clare
..... J. S. Brannon & Son	832 Blue, White Crescent, Sleeves and Cap.....	Geo. H. Rice
..... C. Weatherford	833 Blue, White Hoops, Red Cap.....	W. Olney
..... Vanguard Stable	834 Blue, White Polka Dots.....	E. W. Heffner
..... Ch. Schlutius	835 Blue, White Polka Dots, Red Cap.....	H. Lewinski
..... W. R. Babcock	836 Blue, White Sash.....	C. Dorsey
Cap..... Carolina Stable	837 Blue, White Sash.....	F. McDonald

838	Blue, White Sash	R. W. Meredith	869
839	Blue, White Sash	F. Carter	870
840	Blue, White Sash and Cap	Washn. Webb	871
841	Blue, White Sash and Cap	Jas. M. Doran	872
842	Blue, White Sash and Cap	R. A. Swigert	873
843	Blue, White Sash, Blue and White Cap	E. Browne	874
844	Blue, White Sash, Blue and White Cap	D. Waldo	875
845	Blue, White Sash, Or Sleeves and Cap	Geo. W. Withers	876
846	Blue, White Sash, Red Cap	A. B. Goodwin	877
847	Blue, White Sash, Red Cap	J. M. McClelland	878
848	Blue, White Sleeves	J. Rivers	879
849	Blue, White Sleeves	Eugene Leigh	880
850	Blue, White Sleeves and Cap	J. Williams	881
851	Blue, White Sleeves and Cap	J. G. Greener	882
852	Blue, White Sleeves, Blue and White Cap	J. Isaacs	883
853	Blue, White Sleeves, Blue and White Cap	H. Askey	884
854	Blue, White Sleeves, Sash and Cap	J. W. Hayes	885
855	Blue, White Sleeves, Sash and Cap	Mahoy & Porter	
856	Blue, White Sleeves with Blue Hoops, White Cap	Chatham Stable	886
857	Blue, White Spots	P. H. Duffy	887
858	Blue, White Spots, Red Sleeves and Cap	E. E. Crowley	888
859	Blue, White Stars	R. Smallwood	889
860	Blue, White Stars	Ed. Wiley	890
861	Blue, White Stars	Haydon & Barry	891
862	Blue, White Stars, Red Sash	C. A. Brown	892
863	Blue, White Stripes	C. C. Maffitt	893
864	Blue, White Stripes	Opequon Stable	
865	Blue, Yellow Bars, Blue and Yellow Cap	Jere Dunn & Co.	894
866	Blue, Yellow Hoops and Cap	J. O. Blake	895
867	Blue, Yellow Sash, Blue and Yellow Cap	Jas. R. Branch	896
868	Blue, Yellow Sash, White Cap	E. A. Trimmer	897

.....R. W. Meredith	869 Blue, Yellow Sleeves, Black Cap.....	J. L. Lloyd
.....F. Carter	870 Bronze, Blue Cap.....	S. C. Strever
.....Washn. Webb	871 Bronze, Blue Sash, Bronze and Blue Cap.....	Cassie Stable
.....Jas. M. Doran	872 Bronze, Green Jacket, Blue Cap.....	J. P. Smallwood
.....R. A. Swigert	873 Brown and Orange, Blue Cap.....	A. L. Todd
.....E. Browne	874 Brown, Blue Cap.....	Jno. Bowler
.....D. Waldo	875 Brown, Blue Sleeves and Cap.....	E. V. Snedeker & Co.
.....Geo. W. Withers	876 Brown, Blue Stripes, Gold Horseshoes.....	A. O. Gilman
.....A. B. Goodwin	877 Brown, Cherry Sleeves.....	G. B. Bryson
.....J. M. McClelland	878 Brown, Cherry Sleeves, Black Cap.....	G. W. Poole
.....J. Rivers	879 Brown, Ch Sleeves, Blk Sash and Cap...	J. N. Carlile & Co.
.....Eugene Leigh	880 Brown, Red Cap.....	E. J. Ward
.....J. Williams	881 Brown, Red Sash.....	I. Staple
.....J. G. Greener	882 Brown, White Cords.....	J. H. Harbeck
.....White Cap.....J. Isaacs	883 Buff and Black, Yellow Cap.....	H. Luzenberg
.....White Cap.....H. Askey	884 Buff and Blue.....	Mrs. J. M. Clay
.....J. W. Hayes	885 Buff, Blue Cap and Sleeves.....	T. W. Moore
.....Mahoy & Porter		
.....ops, White		
.....Chatham Stable	886 Canary, Black Cap, Gold Tassel.....	R. R. Owings
.....P. H. Duffy	887 Canary, Black Sleeves and Cap.....	J. H. Bradford, Jr.
.....and Cap.....E. E. Crowley	888 Canary, Blk Sleeves, Canary and Blk Cap...	E. Y. Johnson
.....R. Smallwood	889 Canary, Blk Sleeves, Canary and Blk Cap.....	W. Fields
.....Ed. Wiley	890 Canary, Blk Sleeves, Gray and Blk Cap...	J. W. Campbell
.....Haydon & Barry	891 Canary, Blk Sleeves, Gray and Blk Cap.....	M. Doyle
.....C. A. Brown	892 Canary, Orange Sleeves, Black Cap.....	C. Cornehlisen
.....C. C. Maffitt	893 Canary, Purple Sleeves and Sash, Canary and	
.....Opequon Stable	Purple Cap.....	Labold Bros.
.....low Cap. Jere Dunn & Co.	894 Cardinal.....	W. M. Allen
.....J. O. Blake	895 Cardinal and Gold, Red Cap.....	R. W. Hopsen
.....low Cap...Jas. R. Branch	896 Cardinal Black Cuffs and Cap.....	Thos M. Draney
.....E. A. Trimmer	897 Cardinal, Black Sash and Cap.....	W. H. Timmons

398	Cardinal, Old Gold Sleeves and Cap.....	Waverly Stable	429
399	Cardinal White Sash and Cap.....	J. Birmingham, Jr.	430
400	Cardinal, with letter "B"	W. T. Browning	431
401	Changeable Red.....	M. Killilea	432
402	Changeable Red and Blue.....	Montgomery Stable	433
403	Changeable Red, Green Cap.....	C. Hessler	434
404	Check Jacket, White Sleeves, Red Cap.....	Boston Stable	435
405	Cherry.....	R. P. Ashe	436
406	Cherry and Black Halves.....	J. H. McCreery	437
407	Cherry and Black Stripes.....	W. H. Cheppu	438
408	Cherry and Lemon Stripes.....	J. W. & R. H. Loud	439
409	Cherry and Lemon Stripes.....	Phoenix Stable	440
410	Cherry and Orange Halves.....	M. McArdle	441
410a	Cherry and White Cap.....	F. C. Kammerer	442
411	Cherry and White Halves.....	J. J. Carroll	443
412	Cherry, Black and Gold Belt and Cap.....	D. A. Honig	444
413	Cherry, Black Belt and Cap	D. A. Honig	445
414	Cherry, Black Belt and Cap.....	R. Pryor	446
415	Cherry, Black Hoops and Cap, Gold Tassel.....	N. G. Lorillard	447
416	Cherry, Black Sleeves and Cap.....	H. T. Howard	448
417	Cherry, Black Sleeves and Cap	F. B. Close	449
418	Cherry, Black Sleeves, Sash and Cap.....	J. H. McCormick	450
419	Cherry, Black Spots.....	Stanley Mortimer	451
420	Cherry, Blue Bars and Sash.....	F. B. Curry	452
421	Cherry, Blue Bars and Sash.....	Ogden Stable	453
422	Cherry, Blue Cap.....	S. S. Brown	454
423	Cherry, Blue Hoops and Sleeves, Cherry Cap.....	W. Redmond	455
424	Cherry, Blue Sleeves, Cherry and Blue Cap.....	Dabney Carr	456
425	Cherry, Blue Sleeves, Ch Bars, Blk Cap.....	Portland Stable	457
426	Cherry, Blue Sleeves and Sash, Cherry Cap.....	Parkville Stable	458
427	Cherry, Blue Square in Back.....	J. Ferguson	459
428	Cherry, Canary Bars and Cap.....	J. Oliver	460

p.....	Waverly Stable	429	Cherry, Cherry and Orange Cap.....	C. H. Pettingill
.....	J. Birmingham, Jr.	430	Cherry, Gold Sleeves and Cap.....	Flatbush Stable
.....	W. T. Browning	431	Cherry, Gold Sleeves and Cap.....	W. Walker
.....	M. Killilea	432	Cherry, Green Sash and Cap.....	E. Purcell
.....	Montgomery Stable	433	Cherry, Green Sleeves, Cherry Bars, Green Cap..	W. Wynne
.....	C. Hessler	434	Cherry, Lemon Cap.....	J. H. Nuce & Co.
Cap.....	Boston Stable	435	Cherry, Old Gold Sleeves and Cap.....	M. A. Walden
.....	R. P. Ashe	436	Cherry, Old Gold Sleeves and Cap.....	C. Johnson
.....	J. H. McCreery	437	Cherry, Orange Collar and Cuffs, Cherry and Orange Cap.....	Al. Caskey
.....	W. H. Cheppu	438	Cherry, Orange Sleeves, Black Cap.....	B. Hill
.....	J. W. & R. H. Loud	439	Cherry, Orange Sleeves, Black Cap.....	John Funk
.....	Phoenix Stable	440	Cherry, Pink Sash and Cap.....	Wm. W. Ayres
.....	M. McArdle	441	Cherry, White Hoops and Cap.....	J. J. Carter
.....	F. C. Kammerer	442	Cherry, White Sash, Black Cap.....	C. Mooney
.....	J. J. Carroll	443	Cherry, White Sash, Black Cap.....	Jas. Hernon
Cap.....	D. A. Honig	444	Cherry, White Sleeves, Blue Cap.....	A. Voorhees
.....	D. A. Honig	445	Chocolate, Blue Sleeves, Chocolate Cap.....	C. J. Kelly
.....	R. Pryor	446	Claret and Gold.....	J. Savage
old Tassel..	N. G. Lorillard	447	Claret and Old Gold.....	H. J. Morris
.....	H. T. Howard	448	Crazy Quilt (Harlequin).....	D. Jackson
.....	F. B. Close	449	Cream and Blue, Red Polka Dots, Black Cap..	W. J. Scoles
Cap.....	J. H. McCormick	450	Crimson and Black.....	F. Rittenhouse
.....	Stanley Mortimer	451	Crimson and Gray.....	A. C. Tower
.....	F. B. Curry	452	Crimson and Old Gold.....	Jeter Walden
.....	Ogden Stable	453	Crimson, Canary Cap.....	B. F. Collier
.....	S. S. Brown	454	Crimson, Canary Cap.....	Garden City Stable
Cherry Cap..	W. Redmond	455	Crimson, Crimson and Yellow Cap.....	J. Lacy
Blue Cap....	Dabney Carr	456	Crimson, Old Gold Sash, Crimson and Old Gold Cap.....	McCullough & Savage
lk Cap....	Portland Stable	457	Crimson Orange Cap.....	Haydon & Barry
Cherry Cap..	Parkville Stable	458	Crimson, Purple Cap.....	F. M. Ware
.....	J. Ferguson			
.....	J. Oliver			

459	Dark Blue	G. R. Buchanan	486	G
460	Dark Blue	L. R. Ketcham	487	G
461	Dark Blue and Green Cap	J. V. Elliott	488	G
462	Dark Blue, Crimson Sash and Cap	Blohm & Co	489	G
463	Dark Blue, Green Bars, Tricolor Cap	P. Mallon	490	G
464	Dark Blue, Maroon Sleeves, Bl and Mar Cap	G. F. Park	491	G
465	Dark Blue, Orange Sash	J. B. Pryor	492	G
466	Dark Blue, Red Cap	B. Woodford	493	G
467	Dark Blue, White Sash	J. M. McCullough	494	G
468	Dark Blue, White Sash	P. J. Donahue	495	G
469	Dark Blue, White Sleeves, Black Cap	D. D. Bell	496	G
469a	Dark Blue, White Sleeves, Black Cap	N. T. Cheek	497	G
470	Dark Green	A. Hemenway	498	G
471	Dark Green and Black Cap	Matlock Bros.	499	G
472	Dark Green and Black Cap	T. Malarkey	500	G
473	Dark Green and Red Cap	S. Emery		
474	Dark Green, Gold Tassel	Hempstead Stable	501	G
475	Dark Maroon, Blue Hoops and Cap, Maroon Tassel	J. B. Pryor, Jr.	502	G
			503	G
			504	G
476	Ecrú, Cardinal Cuffs and Cap	D. H. Moshler	505	G
477	French Gray, Green Sash, Red Sleeves, Wh. Cap	C. Moncks	506	G
			507	G
			508	G
478	Garnet and Black Stripes	Joshua Mitchell	509	G
479	Garnet and Old Gold	W. B. Scaman	510	G
480	Garnet and Old Gold	P. F. Cogan	511	G
481	Garnet and Old Gold Stripes	Brophy Bros.	512	G
482	Garnet, Garnet and Pink Cap	F. D. Jones	513	G
483	Garnet, Gold Hoop, Garnet and Gold Cap	Jos. Warder	514	G
484	Garnet, Light Blue Sleeves and Cap	Jas. Parker	515	G
485	Garnet, Old Gold Hoops and Cap	J. R. Woodward	516	G

.....G. R. Buchanan	486	Garnet, Pink Sleeves and CapJ. Brannigan & Co.
.....L. R. Ketcham	487	Garnet, Pink Sleeves and CapT. H. Bush
.....J. V. Elliott	488	Garnet, Pink Sleeves and CapSwan Stable
.....Blohm & Co	489	Garnet, White Sleeves, Red CapW. K. Bender
.....P. Mallon	490	Gold and Bik Body, Red Sleeves and CapFennimore Bros.
Mar Cap.....G. F. Park	491	Gold and Purple Stripes, Red CapIrving Stable
.....J. B. Pryor	492	Gold, Blue CapG. W. Nixon
.....B. Woodford	493	Golden BrownF. Taylor
.....J. M. McCullough	494	Golden BrownAuburndale Stable
.....P. J. Donahue	495	Gold, Rose Sleeves and Sash, G. and R. CapG. Howson
.....D. D. Bell	496	Graham PlaidW. A. Dunn
.....N. T. Cheek	497	GrayGarth & Co.
.....A. Hemenway	498	Gray and CherryA. Johnson
.....Matlock Bros.	499	Gray, Cherry Sash, Cuffs, Collar and CapH. O. Eicks
.....T. Malarkey	500	Gray, Cherry Sash, Collar and Cuffs, Cherry and Gray CapHy. Thomas
.....S. Emery	501	Gray, Red Sash and CapG. B. Walters
.....Hempstead Stable	502	GreenC. A. Bader
.....p, Maroon	503	GreenJno. S. Clark
.....J. B. Pryor, Jr.	504	GreenJ. J. Kane
.....D. H. Moshier	505	GreenJas. Murphey
.....ves, Wh. Cap..C. Moncks	506	GreenJ. D. Morrissey
.....Joshua Mitchell	507	GreenM. Welsh
.....W. B. Scaman	508	Green and BlackW. J. Brien
.....P. F. Cogan	509	Green and Black Jacket and CapJno. A. Stewart
.....Brophy Bros.	510	Green and Black SashT. Hearne
.....F. D. Jones	511	Green and Blue StripesN. W. Kittson
.....old Cap.....Jos. Warder	512	Green and Cherry DotsG. Carroll & Co.
.....ap.....Jas. Parker	513	Green and Cherry StripesM. N. Nolan
.....J. R. Woodward	514	Green and GoldP. J. Carmody
	515	Green and Maltese CrossJ. Cochran
	516	Green and Old Gold Stripes, White CapH. C. Wolf

517	Green and Orange.....	O. F. Wiseman	547	C
518	Green and Orange.....	W. H. Laudeman	548	C
519	Green and Orange.....	Rutherford & McClelland	549	C
520	Green and Orange.....	J. B. Clay	550	C
521	Green and Orange, Red Cross.....	H. L. Bond	551	C
522	Green and White Stripes.....	L. Curran	552	C
523	Green and Wh Stripes, Wh Sleeves Gn Cap....	G. F. Vingut	553	C
524	Green, Blk Cuffs, White Stars and Cap....	Jilson & Chapman	554	C
525	Green, Blue Cap.....	J. Thompson	555	C
526	Green, Brown Sleeves.....	Paxton Bros.	556	C
527	Green, Gold Bars on Sleeves.....	J. Foley	557	C
528	Green, Gold Jacket and Cap.....	Oakwood Stable	558	C
529	Green, Gold Sash and Hoops, Green Cap.....	John Church	559	C
530	Green, Gold Sash, Hoops on Sleeves, Gn Cap....	D. O'Connor	560	C
531	Green, Gold Stripes, Red Cap.....	H. Davis	561	C
532	Green, Old Gold Sleeves, Green and Old Gold Cap.....	R. McGuigan	562	C
533	Green, Old Gold Sleeves, Green Cap.....	Jas. Griffin	563	C
534	Green, Old Gold Stripes, White Cap.....	B. Farris	564	C
535	Green, Old Gold Stripes, White Cap.....	Fisher & Co.	565	C
536	Green, Old Gold Stripes, White Cap.....	Octo Stable	566	C
537	Green, Orange Cuffs and Sash, Green and Orange Cap.....	D. C. Fannin & Co.	567	C
538	Green, Orange Sash.....	Byron McClelland	568	C
539	Green, Orange Sash, Cherry Cap.....	Veritas Stable	569	C
540	Green, Orange Sash, White Cap.....	Penn. Yetter	570	C
541	Green, Orange Sleeves.....	A. L. Loveless	571	C
542	Green, Orange Sleeves and Cap.....	J. L. Kernochan	572	C
543	Green, Orange Sleeves and Cap.....	M. Elder	573	C
544	Green, Orange Sleeves Black and Orange Cap....	C. Hughes	574	C
545	Green, Orange Sleeves, Gr and Or. Cap.....	W. Whalen	575	C
546	Green, Orange Sleeves, White Cap.....	J. P. McDermott	576	C
			577	C

COLORS.

.....O. F. Wiseman	547 Green, Pink Sash.....	P. McCauley
.....W. H. Laudeman	548 Green, Pink Sash, Green and Pink Cap.....	A. Kramer
.....Rutherford & McClelland	549 Green, Pink Sleeves.....	A. G. Weston
.....J. B. Clay	550 Green, Pink Sleeves, White Cap.....	S. Lee
.....H. L. Bond	551 Green, Purple Stripes.....	Geo. Ward
.....L. Curran	552 Green, Red and White Cap.....	C. Nelson
Gn Cap....G. F. Vingut	553 Green, Red Cap.....	P. Stanton
Cap....Jilson & Chapman	554 Green, Red Cap.....	G. Donohue
.....J. Thompson	555 Green, Red Cap.....	Berger Stable
.....Paxton Bros.	556 Green, Red Cap.....	C. F. Clark
.....J. Foley	557 Green, Red Sash.....	A. F. McCullough
.....Oakwood Stable	558 Green, Red Sash.....	P. Corrigan
n Cap.....John Church	559 Green, Red Sash and Belt, Green Cap.....	J. C. Burk
s, Gn Cap....D. O'Connor	560 Green, Red Sash and Cap.....	C. Doyle
.....H. Davis	561 Green, Red Sash and Cap.....	L. Martin
and Old	562 Green, Red Sash and Cap.....	Hy. Nungesser
.....R. McGuigan	563 Green, Red Sash, Green Cap.....	R. Stark
ap.....Jas. Griffin	564 Green, Red Sleeves, Orange Cap.....	J. M. Brown & Co.
ap.....B. Farris	565 Green, Red Sleeves, Orange Cap.....	T. Turner
ap.....Fisher & Co.	566 Green, Red Sleeves, Red and Green Cap.....	Robt. Wilson
ap.....Octo Stable	567 Green, Red Sleeves and Sash, Gr. and Red Cap.....	R. McBride
reen and	568 Green, Red, White and Blue Cap....	J. J. Dougherty
.....D. C. Fannin & Co.	569 Green, Red, White and Blue Cap.....	M. E. Clarke
.....Byron McClelland	570 Green, White Bars on Sleeves.....	Mr. Reichert
.....Veritas Stable	571 Green, White Bars on Sleeves, White Cap, Green	
.....Penn. Yetter	Tassel.....	W. Rollins
.....A. L. Loveless	572 Green, White Cap.....	Clifton Bell
.....J. L. Kernochan	573 Green, White Cap.....	J. Casey
.....M. Elder	574 Green, White Hoops and Cap.....	M. Clancy
Orange Cap....C. Hughes	575 Green, White Hoops, Black Cap.....	L. Tully
r. Cap....W. Whalen	576 Green, White Hoops on Right Arm.....	N. Becker
ap.....J. P. McDermott	577 Green, White Hoops, Red Cap.....	T. Kearns

578	Green, White Hoops, Red Cap.....	McInerney & Son	608	Li
579	Green, White Sash.....	I. Murphy	609	Li
580	Green, White Sash.....	E. Corrigan	610	Li
581	Green, White Sash.....	Keene Page	611	Li
582	Green, White Sash, Gold Cap.....	C. Sullivan	612	Li
583	Green, White Sash, Green and White Cap.....	L. Hart		
584	Green, White Spots.....	D. Nagle	613	M
585	Green, White Spots.....	D. J. McColl		
586	Green, White Spots.....	W. H. Ottman	614	M
587	Green, White Star and Cap.....	P. McKenna	615	M
588	Green, White Star and Cap.....	Chapman & Liddell	616	M
589	Green, White Star and Cap.....	W. J. Kennedy	617	M
590	Green, with Polka Dots.....	J. M. Isola	618	M
591	Green, Yellow Sash, Red and White Cap.....	D. Berganini	619	M
592	Green, Yellow Sleeves and Cap.....	L. J. Yore	620	M
			621	M
			622	M
593	Lavender, White Sash.....	F. Robinson	623	M
594	Lavender, White Sash and Cap.....	J. B. Quinn	624	M
595	Lavender, White Sash, Lav. and Wh Cap..	Geo. W. Maurer	625	M
596	Lemon, Maroon Sash.....	D. Lace	626	M
597	Light Blue.....	H. Brown	627	M
598	Light Blue.....	E. Burgess	628	M
599	Light Blue.....	W. Callahan	629	M
600	Light Blue.....	Long Island Stable	630	M
601	Light Blue, Dark Blue Sash, Black Cap.....	J. Lawrence	631	M
602	Light Blue, Gold Trimmings, Blk Sash and Cap...	L. Ehlers	632	M
603	Light Blue, Gray Sash and Cap.....	J. Hynes	633	M
604	Light Blue, Maroon Hoops and Cap.....	Blagrove & Co.		
605	Light Blue, Maroon Hoops and Cap.....	H. Olney	634	M
606	Light Blue, Maroon Spots.....	Oxford Stable		
607	Light Blue, Red Cap.....	Pawnee Stable	635	M

.....McInerney & Son
I. Murphy
E. Corrigan
Keene Page
C. Sullivan
 e Cap.....L. Hart
D. Nagle
D. J. McCoil
W. H. Ottman
P. McKenna
Chapman & Liddell
W. J. Kennedy
J. M. Isola
 Cap.....D. Berganini
L. J. Yore

F. Robinson
J. B. Quinn
 a Cap..Geo. W. Maurer
D. Lace
H. Brown
E. Burgess
W. Callahan
Long Island Stable
 Cap.....J. Lawrence
 ash and Cap....L. Ehlers
J. Fynes
Blagrove & Co.
H. Olney
Oxford Stable
Pawnee Stable

608 Light Blue, Red Sash and CapW. L.ritchard
 609 Lilac and Black CapJ. Cooley
 610 Lilac and Blue.....W. Snell
 611 Lilac and Blue CapM. Jordan
 612 Lilac and Pink.....Western Union Stable

 613 Magenta, Canary Hoops on Sleeves,
 Canary Cap.....W. S. Barnes & Co.
 614 Magenta, Gold Star.W. L. Stokes
 615 Magenta, Salmon Sleeves, Magenta Cap.McMahon & Garrison
 616 Maroon.....G. W. Downing
 617 Maroon.....P. Halpin
 618 Maroon.....Ch. O'Neil
 619 Maroon, Blue and Maroon Cap.....J. Nevins
 620 Maroon, Blue Cap.....T. Dalton
 621 Maroon, Blue Cap.....C. F. Schleich
 622 Maroon, Blue Cap.....J. McNamee
 623 Maroon, Blue HoopsWestbury Stable
 624 Maroon, Blue Sash and Cap.....F. E. Bader
 625 Maroon, Blue Sash and Cap.....J. E. Cook
 626 Maroon, Lavender Sleeves and Cap.....M. D. Callahan
 627 Maroon, Pink Sash.....Jno. Alexander & Co.
 628 Maroon, Red Cap.....F. M. Bray
 629 Maroon, Scarlet Sash and Cap.....Aug. Belmont
 630 Maroon, White SashA. G. McCampbell & Co.
 631 Maroon, White Sash, Orange Cap.....Geo. Carson
 632 Maroon, Yellow Sash, Blue Cap.....Dr. Balfour
 633 Maroon, Yellow Sash, Blue Cap.....J. E. Barkley

 634 Navy Blue, Old Gold Sleeves, Red Collar and
 Cuffs, Green Cap.M. Hilgert
 635 Nile Green, Olive Sleeves and CapP. Clinch

686	Old Gold and Blue.....	J. W. Owens	688
687	Old Gold and Cardinal.....	J. D. Matheson	689
688	Old Gold and Polka Dots.....	Griffin & Bradbury	670
689	Old Gold and Purple.....	J. T. Clay	671
640	Old Gold and Wine.....	A. H. Barney	672
641	Old Gold, Black Sleeves and Cap.....	O. E. Le Fevre	673
642	Old Gold, Black Sleeves and Cap.....	H. Howard	
643	Old Gold, Black Stripes.....	Clark & Co.	674
644	Old Gold, Black Stripes and Cap.....	J. H. Fee	675
645	Old Gold, Blue Cross.....	Curtis & Nepper	676
646	Old Gold, Blue Cuffs and Cap.....	P. Hughes	677
647	Old Gold, Blue Dots and Sleeves.....	Baxter & Jordan	678
648	Old Gold, Blue Polka Dots and Sleeves.....	J. E. Cashon	679
649	Old Gold, Blue Sash and Cap.....	P. H. Grill	680
650	Old Gold, Blue Sleeves, O G and Blue Cap.....	J. Mason & Son	681
651	Old Gold, Blue Stripes.....	T. P. Phelan	
652	Old Gold, Blue Stripes.....	A. Louden	682
653	Old Gold, Blue Stripes and Cap.....	J. Flynn	683
654	Old Gold, Green Sleeves, O G and Gr Cap.....	W. McGuigan	684
655	Old Gold, Green and Old Gold Cap.....	W. B. Linell	685
656	Old Gold, Green Stripes.....	C. H. Brackett	686
657	Old Gold, Maroon Cap.....	H. C. Judson	687
658	Old Gold, Purple Sash, Pink and Blue Cap.....	H. E. Smith	688
659	Old Gold, Purple Stripes.....	Josiah Allen	689
660	Old Gold, Red Cap.....	A. Mills	690
661	Old Gold, Red Polka Dots.....	F. W. Matthews	691
662	Old Gold, Red Sleeves and Sash.....	Tinsdale & Houston	
663	Olive Green, Gold Belt.....	R. C. Livingston	692
664	Olive, Pink Stripes on Sleeves.....	Tremont Stable	693
665	Olive, Red Sash and Cap.....	T. McCaull	694
666	Orange.....	A. Alexander	695
667	Orange.....	T. W. Dowwell	696

COLORS.

GOODWIN'S RACING COLORS.

27

..... J. W. Owens	668	Orange.....	W. Gillespie
..... J. D. Matheson	669	Orange.....	W. E. Walker & Co.
..... Griffin & Bradbury	670	Orange and Green.....	J. K. Megibben
..... J. T. Clay	671	Orange and Green Cap.....	J. T. Ireland
..... A. H. Barney	672	Orange and Red.....	T. H. Swope
..... O. E. Le Fevre	673	Orange, Black Bars on Sleeves, Black Sash and Cap.....	W. J. Weidener
..... H. Howard	674	Orange, Black Sleeves and Cap.....	St. Cloud Stable
..... Clark & Co.	675	Orange, Black Sleeves, White Cap.....	Carroll & Mack
..... J. H. Fee	676	Orange, Black Stripes, Red Sleeves and Cap.....	W. Boughrum
..... Curtis & Nepper	677	Orange, Blue Cap.....	Long & Lewis
..... P. Hughes	678	Orange, Blue Cap.....	W. M. Anderson
..... Baxter & Jordan	679	Orange, Blue Cap.....	B. G. Harria
..... J. E. Cashon	680	Orange, Blue Crescent.....	M. Barrett
..... P. H. Grill	681	Orange, Blue Crescent, Maroon and Blue Cap.....	Green & Roberts
..... J. Mason & Son	682	Orange, Blue Cuffs, Sash and Cap.....	R. M. Maynard & Co.
..... T. P. Phelan	683	Orange, Blue Polka Dots.....	R. J. Anderson
..... A. Louden	684	Orange, Blue Sash and Cap.....	D. A. Broller
..... J. Flynn	685	Orange, Blue Sleeves and Cap.....	J. B. Haggin
..... W. McGuigan	686	Orange, Blue Sleeves and Cap.....	Jno. Balley
..... W. B. Linell	687	Orange, Blue Sleeves and Cap, Red Sash.....	T. Kiley
..... C. H. Brackett	688	Orange, Blue Sleeves, Red Sash.....	T. Brown & Co.
..... H. C. Judson	689	Orange, Blue Stars and Bars.....	S. L. Groves
..... H. E. Smith	690	Orange, Blue Stars and Crescent.....	Louisiana Stable
..... Josiah Allen	691	Orange, Blue Stripes and Cuffs, Old Gold and Black Cap.....	C. C. Maffit
..... A. Mills	692	Orange, Brown Sleeves, Sash and Cap.....	J. Elter
..... F. W. Matthews	693	Orange, Crimson Sash and Cap.....	Arthur M. Hunter
..... Tinsdale & Houston	694	Orange, Green Sash.....	T. J. Megibben
..... R. C. Livingston	695	Orange, Green Sleeves and Cap.....	G. S. Caldwell
..... Tremont Stable	696	Orange, Maroon Cap.....	N. C. Ackerman
..... T. McCaull			
..... A. Alexander			
..... T. W. Dowwell			

697	Orange, Old Gold Cap.....	Thos. Raymond	727
698	Orange, Purple and Garnet, Maltese Cross....	H. O. Bernard	728
699	Orange, Purple Sleeves, Or and Pur Cap.....	T. B. Poswell	729
700	Orange, Red Cap.....	F. B. Harper	730
701	Orange, Red Sash.....	W. T. Brooks	731
702	Orange, Red Sash and Cap.....	Jas. Surget	732
703	Orange, Red Sash, Orange Cap.....	J. W. Guest	733
704	Orange, Red Sash, White Cap.....	W. T. Brooks	734
705	Orange, Red Sash, White Cap.....	R. Lisle & Co.	735
706	Orange, Red Sleeves.....	Appleby and Johnson	736
707	Orange, Red Sleeves and Cap.....	J. Wakely	737
708	Orange, Red Sleeves and Cap.....	W. Huston	738
709	Orange, Red Sleeves and Cap.....	Hudson Stable	739
710	Orange, Red Sleeves, Sash and Cap.....	T. Puryear	740
711	Orange, White and Black.....	T. N. Miller	741
712	Orange, White Sash, Red Cap.....	J. J. Tompkins	742

713	Peacock Blue.....	M. J. Daly	743
714	Peacock Blue, Cherry Sash, Sleeves and Cap..	J. N. Cassidy	744
715	Peacock Blue, Maroon Sleeves and Cap..	Highland Pk. Stable	745
716	Peacock Blue, White Horseshoe and Cap..	Wheeler & Faires	746
717	Peacock Blue, with three Gold Stars.....	P. Mulcahey	747
718	Pink.....	R. Brandt	748
719	Pink.....	M. Sheridan	749
720	Pink.....	West End Stable	750
721	Pink and Blue.....	D. F. Savage	751
722	Pink and White Stripes, Black Cap.....	Jos. Donohue, Jr.	752
723	Pink and White, Yellow Cap.....	H. Dawa	753
724	Pink, Black Sleeves and Cap.....	J. F. Ullman	754
725	Pink, Blue Cap.....	C. H. Hughes	755
726	Pink, Blue Sash, Red Cap.....	G. Webb	756
			757

.....Thos. Raymond
 Cross.....H. O. Bernard
 Cap.....T. B. Doswell
F. B. Harper
W. T. Brooks
Jas. Surget
J. W. Guest
W. T. Brooks
R. Lisle & Co.
Appleby and Johnson
J. Wakely
W. Huston
Hudson Stable
T. Puryear
T. N. Miller
J. J. Tompkins

.....M. J. Daly
 and Cap...J. N. Cassidy
 Cap. Highland Pk. Stable
 Cap. Wheeler & Faies
 s.....P. Mulcahey
R. Brandt
M. Sheridan
West End Stable
D. F. Savage
Jos. Donohue, Jr.
H. Daws
J. F. Ullman
C. H. Hughes
G. Webb

727 Pink, Gold Spots, Gold Cap.....E. Zborowski
 728 Pink, Green Sleeves and Cap.....H. Vingut
 729 Pink, Green Sleeves and Cap.....R. McCann
 730 Pink, Green Sleeves, White Cap... ..S. D. Jackson
 731 Pink, Light Blue Sash and Cap.....J. Kenny
 732 Pink, Orange Sleeves and Cap.....J. M. Paul
 733 Pink, Orange Sleeves and Cap.....S. S. Crawford
 734 Pink, Orange Sleeves and Cap.....J. W. Engleman
 735 Pink, Orange Sleeves and Cap.....W. Fields, Jr.
 736 Pink, Red Cap.....Levi Knott
 737 Pink, Red Sash and Cap.....Riverside Stable
 738 Pink, Red Sash, Cuffs and Cap.... ..J. N. Price
 739 Pink, Violet Sleeves and Cap.....Keystone Stable
 740 Pink, White Rose Sleeves and Cap.....Hillside Stable
 741 Pink, White Sleeves and Sash, Pink Cap...Balrowne Stable
 742 Plum and Orange.....J. N. Ackerman
 743 Plum and Yellow.....J. Redfield
 744 Plum, Orange Cap.....Old Mill Stable
 745 Purple.....Engleman & Fields
 746 Purple.....L. B. Fields
 747 Purple.....W. M. Fields, Jr.
 748 Purple.....G. W. Stewart
 749 Purple and Gold.....Clyde Stable
 750 Purple and Orange.....W. G. St. John
 751 Purple, Canary Sash, Purple and Canary
 Cap.....W. H. Harding & Co.
 752 Purple, Crimson Sash.....C. King, Jr.
 753 Purple, Crimson Sash, Orange Cap.....J. Hogan
 754 Purple, Gold Sash.....P. Fisher
 755 Purple, Old Gold Sash.....W. A. Curwin
 756 Purple, Old Gold Sash, Red and White Cap..G. H. Kernaghan
 757 Purple, Old Gold Sleeves.....W. H. May

758	Purple, Old Gold Sleeves, Pur and O. G. Cap...	Geo. H. Clay	787
759	Purple, Old Gold Stripes	H. A. Newton	788
760	Purple, Old Gold Stripes, Cherry Cap.....	Hurricane Stable	789
761	Purple, Pink Sash, Green Cap.....	W. H. Barrett	790
762	Purple, Red Cuffs and Cap.....	J. W. Crawford	791
763	Purple, Red and White Sash.....	Redding Bros.	792
764	Purple, White Cap.....	G. B. Morris	793
765	Purple, White Sash and Cap.....	P. Mack	794
766	Purple, White Sash and Cap	Jas. Gray & Co.	795
767	Purple, White Sleeves.....	Jas. F. McElhone	796
768	Purple, White Sleeves, Purple and White Cap....	C. Askey	797
769	Purple, White Sleeves, Purple and Wh Cap.....	E. Cartwell	798
770	Purple, Yellow Sleeves and Cap.....	F. D. Beard	799
			800
			801
771	Red.....	J. C. Alexander	802
772	Red.....	D. D. Davis	803
773	Red.....	G. W. Hancock	804
774	Red.....	A. C. Tucker	805
775	Red and Black, Green Sash and Cap... ..	Ed. Caldwell	806
776	Red and Black Halves.....	S. D. Bruce	807
777	Red and Black Stripes.....	Ira E. Bride	808
778	Red and Black Stripes.....	Red Bank Stable	809
779	Red and Black Stripes.....	E. Cahill	810
779	Red and Black Stripes.....	Wm. Carson	811
780	Red and Blue	S. A. Brown	812
781	Red and Blue.....	Wm. Conner	813
782	Red and Blue.....	W. G. Middleton	814
783	Red and Blue Halves.....	V. L. Kirkman	815
784	Red and Blue Halves, Red and Blue Cap.....	R. E. Maddox	816
785	Red and Blue Jacket, White Band and Cap..	Chickasaw Stable	817
786	Red and Blue Quarters.....	D. D. Younger	818

O. G. Cap...	Geo. H. Clay	787	Red and Blue Stripes.....	Excelsior Stable	
.....	H. A. Newton	788	Red and Green Stripes.....	Gorman & Haig	
Cap.....	Hurricane Stable	789	Red and Old Gold.....	J. R. McKee	
.....	W. H. Barrett	790	Red and Old Gold Sleeves, Red and O. G. Cap..	L. & G. Straus	
.....	J. W. Crawford	791	Red and Orange, Sash in Back.....	E. M. Hilton	
.....	Redding Bros.	792	Red and Silver Gray Stripes and Cap.....	C. Terry & Co.	
.....	G. B. Morris	793	Red and White.....	O. Bowie	
.....	P. Mack	794	Red and White.....	A. G. Johnson	
.....	Jas. Gray & Co.	795	Red and White.....	Ch. Uncher	
.....	Jas. F. McElhone	796	Red and White, Blue Sleeves.....	C. W. Bradley	
.....	White Cap....	C. Askey	797	Red and White Halves.....	N. J. Douglas
.....	Wh Cap.....	E. Cartwell	798	Red and White Halves.....	J. B. Ferguson
.....	F. D. Beard	799	Red and White Halves, White Cap.....	W. J. Lecal	
.....		800	Red and White, Purple Cap.....	A. McCarthy, Sr.	
.....		801	Red and White Stripes.....	H. B. Durham	
.....	J. C. Alexander	802	Red and White Stripes.....	J. Arnett	
.....	D. D. Davis	803	Red and White Stripes.....	W. B. Jennings	
.....	G. W. Hancock	804	Red and White Stripes Red Cap.....	J. C. Alexander	
.....	A. C. Tucker	805	Red and White, with Star.....	M. M. Lynch	
Cap.....	Ed. Caldwell	806	Red and Yellow.....	J. A. Fink	
.....	S. D. Bruce	807	Red and Yellow.....	M. Hogan	
.....	Ira E. Bride	808	Red and Yellow.....	J. White	
.....	Red Bank Stable	809	Red and Yellow Halves and Cap.....	G. Davies	
.....	E. Cahill	810	Red, Black and White Cap.....	F. Charlton	
.....	Wm. Carson	811	Red, Black Cap.....	P. Manee	
.....	S. A. Brown	812	Red, Black Cap.....	Davis & Co.	
.....	Wm. Conner	813	Red, Black Maltese Cross, Black Cap.....	H. J. Woodford	
.....	W. G. Middleton	814	Red, Black Sash and Cap.....	Geo. Reed	
.....	V. L. Kirkman	815	Red, Black Sash and Cap.....	La Masney Bros.	
Blue Cap.....	R. E. Maddox	816	Red, Black Sash, Blue Cap.....	W. R. Rogan	
and Cap.....	Chickasaw Stable	817	Red, Black Sash, Blue Cap.....	Bell & Timberlake	
.....	D. D. Younger	818	Red, Black Sash, Blue Cap.....	Bennett & Co.	

819	Red, Black Sash, Brown and Blue Cap.....	R. L. Downton	851
820	Red, Black Sash, Maroon and Red Cap.....	D. A. Honlg	852
821	Red, Black Sash, White Cap.....	C. Pritchard	853
822	Red, Black Sash, White Cap.....	Mr. Hayden	854
823	Red, Black Sleeves and Cap.....	W. Donohue	855
824	Red, Black Sleeves and Cap.....	J. B. Randall & Co.	856
825	Red, Black Sleeves and Sash, Rd and Blk Cap....	V. Hollar	857
826	Red, Black Stripes.....	Lexington Stable	858
827	Red, Black Stripes, Red Cap.....	Wm. Elrick	859
828	Red, Blue and Maroon Cap.....	Creole Stable	860
829	Red, Blue and Tan Stripes.....	H. Mack	861
830	Red, Blue and Tan Stripes.....	W. R. Brassfield & Co.	862
831	Red, Blue and Tan Stripes.....	W. R. Letcher	863
832	Red, Blue Cap.....	M. Meador	864
833	Red, Blue Cap.....	A. L. Broeck	865
834	Red, Blue Cap.....	G. H. Bell	866
835	Red, Blue Cap.....	F. E. Sage	867
836	Red, Blue Cap.....	Thos. Finucan	868
837	Red, Blue Cap.....	Hubbard & Co.	869
838	Red, Blue Cap.....	Ed. Hughes	870
839	Red, Blue Cap.....	F. D. Weir	871
840	Red, Blue Cap.....	P. W. Brown	872
841	Red, Blue Cap.....	J. Rodegap	873
842	Red, Blue Collar, White Cap.....	J. J. Connolly	874
843	Red, Blue Cross, Red and Blue Cap.....	L. Yehle	875
844	Red, Blue Cuffs, White Sash and Cap.....	W. Lonx	876
845	Red, Blue Hoops on Sleeves, Blue Cap.....	C. Thomas	877
846	Red, Blue Hoops, Red and Blue Cap.....	J. & J. Christy	878
847	Red, Blue Hoops, Red and Blue Cap.....	P. J. Flinn	879
848	Red, Blue Sash.....	W. B. Cheatham	880
849	Red, Blue Sash, Red Cap.....	Dwyer Bros.	881
850	Red, Blue Sash, Black and Blue Cap.....	E. W. Price	882

Cap.....R. L. Downton	851 Red, Blue Sash, White Cap.....Orkney Stable
ed Cap.....D. A. Honig	852 Red, Blue Sleeves and Cap.....P. Gorman
.....C. Pritchard	853 Red, Blue Sleeves and Cap.....Campbell & Co.
.....Mr. Hayden	854 Red, Blue Sleeves and Cap.....G. B. Grimes
.....W. Donohue	855 Red, Blue Sleeves and Cap.....P. Erzinger
.....J. B. Randall & Co.	856 Red, Blue Sleeves and Cap.....J. Ward
and Blk Cap....V. Hollar	857 Red, Blue Sleeves and Cap, Red Hoops..W. B. Scarborough
.....Lexington Stable	858 Red, Blue Sleeves and Cap, Red Stripes.....Jos. Ullman
.....Wm. Elrick	859 Red, Blue Sleeves and Cap, White Sash....J. D. Cusenbery
.....Creole Stable	860 Red, Blue Sleeves, Black Cap.....H. Osborn
.....H. Mack	861 Red, Blue Sleeves Rd Cuffs, Rd and Blue Cap..P. L. Crume
.....W. R. Brassfield & Co.	862 Red, Blue Sleeves, Black Cap.....J. Downs
.....W. R. Letcher	863 Red, Blue Sleeves, Black Cap.....J. T. McIver
.....M. Meador	864 Red, Blue Sleeves, Black Sash.....Angle & Hildreth
.....A. L. Broeck	865 Red, Blue Sleeves, Rd Cuffs and Cap.....J. Patterson
.....G. H. Bell	866 Red, Blue Sleeves, Sash and Cap.....J. P. Gasaway
.....F. E. Sage	867 Red, Blue Sleeves, Sash and Cap.....W. T. Wright
.....Thos. Finucan	868 Red, Blue Sleeves, White Cap.....Treacy & Levy
.....Hubbard & Co.	869 Red, Blue Sleeves, White Cap.....P. H. McMahon
.....Ed. Hughes	870 Red, Blue Sleeves, White Sash and Cap.....Thos. Bryan
.....F. D. Weir	871 Red, Dark Blue Sleeves and Cap.....F. Gray Griswold
.....P. W. Brown	872 Red, Gold Cap.....Monmouth Stable
.....J. Rodegap	873 Red, Gold Spots.....F. Gebhard
.....J. J. Connolly	874 Red, Green Sleeves, Or and Pur Cap.....C. L. Thudichum
Cap.....L. Yehle	875 Red, Green Sleeves, Red Cap.....H. Ball
ed Cap.....W. Lonx	876 Red, Green Sleeves, Yellow Cap.....Linwood Stable
ue Cap.....C. Thomas	877 Red, Green Sleeves, Yellow Cap.....Union Stable
Cap.....J. & J. Christy	878 Red, Green Sleeves, Yellow Cap.....J. M. Womack
Cap.....P. J. Fliinn	879 Red, Maroon and Blue Cap.....D. A. Honig
.....W. B. Cheatham	880 Red, Maroon and Red Cap.....D. A. Honig
.....Dwyer Bros.	881 Red, Maroon Cap.....R. Harris
Cap.....E. W. Price	882 Red, Maroon Sleeves.....J. T. Meagher

883	Red, Old Gold Sleeves, Red and Old Gold Cap...	W. E. West	915
884	Red, Old Gold Sleeves, Red and O. G. Cap...	J. G. McFadden	916
885	Red, Old Gold Sleeves, Red and O. G. Cap...	J. B. Richardson	917
886	Red, Orange and Black Cap.....	J. McKinney	918
887	Red, Orange Cap.....	P. McCarty	919
888	Red, Orange Sleeves.....	E. A. McGuire	920
889	Red, Orange Sleeves, Red Cap.....	W. C. Shelton	921
890	Red, Orange Sleeves, White Cap.....	J. D. Patton	922
891	Red, Peacock Blue Sleeves.....	J. Blanchfill	923
892	Red, Red and Black Cap.....	J. K. Adams	924
893	Red, Red and Black Cap.....	W. T. Taylor	925
894	Red, Red and White Cap.....	Jno. S. Shaw	926
895	Red, Red, White and Blue Sleeves.....	J. Bamford	927
896	Red, Red, White and Blue Sleeves and Cap.....	O. Shannon	928
897	Red, Silver Stars, Red Cap.....	W. Van Keuren	929
898	Red, White and Blue.....	B. J. Laraway	930
899	Red, White and Blue.....	Osborn Morton	931
900	Red, White and Blue Hoops, Blue Cap.....	A. J. Cassatt	932
901	Red, White and Blue, Blue Cap, with Stars..	Geo. L. Stemple	933
902	Red, White and Blue Stripes.....	Wooding & Puryear	934
903	Red, White and Blue Stripes, Blue Stars....	Jno. Hambrick	935
904	Red, White and Blue Stripes, with Stars..	Geo. E. Lynn & Co.	936
905	Red, White and Blue, with Shamrocks...	C. M. Barry & Co.	937
906	Red, White Band, Red Cap.....	Jno. Robinson	938
907	Red, White Cap.....	J. S. Moles	939
908	Red, White Cap.....	Lyle & Palmer	940
909	Red, White Cross.....	J. P. Cuerrin	941
910	Red, White Cross on Back.....	J. Logan	942
911	Red, White Cuffs and Cap.....	Kelder & Mullin	943
912	Red, White Hoops and Sash, Red and Wh Cap...	W. Stoops	944
913	Red, White Sash.....	T. Chapman	945
914	Red, White Sash.....	Gartlan & Murphy	946

Old Gold Cap...	W. E. West	915	Red, White Sash	J. C. Alexander
G. Cap...	J. G. McFadden	916	Red, White Sash and Cap	W. Adler
G. Cap...	J. B. Richardson	917	Red, White Sash and Cap	Bedford Stable
	J. McKinney	918	Red, White Sash and Cap	J. Klein & Co.
	P. McCarty	919	Red, White Sash and Cap	L. Metz
	E. A. McGuire	920	Red, White Sash, Black Cap	T. M. Berry
	W. C. Shelton	921	Red, White Sash, Blue and White Cap	S. E. Larabee
	J. D. Patton	922	Red, White Sash, Blue Cap	A. Lakeland
	J. Blanchfill	923	Red, White Sash, Blue and Old Gold Cap	J. Seyfried
	J. K. Adams	924	Red, White Sash, Blue Sleeves and Cap	Treacy & Levy
	W. T. Taylor	925	Red, White Sash, Green and Pink Cap	A. M. Boyer
	Jno. S. Shaw	926	Red, White Sash, Green and Pink Cap	Wood & Boyer
ves	J. Bamford	927	Red, White Sash, Red and White Cap	Whitten Bros.
ves and Cap	O. Shannon	928	Red, White Sleeves	Marvin & Douglas
	W. Van Keuren	929	Red, White Sleeves	T. Bate
	B. J. Laraway	930	Red, White Sleeves and Cap	E. S. Gardner
	Osborn Morton	931	Red, White Sleeves and Sash	W. B. Cheatham
ue Cap	A. J. Cassatt	932	Red, White Sleeves, Black Cap	Piedmont Stable
with Stars	Geo. L. Stemple	933	Red, White Sleeves, Black Cap	L. James
	Wooding & Puryear	934	Red, White Sleeves, Black Cap	J. Connelly
ue Stars	Jno. Hambrick	935	Red, White Sleeves, Blue Cap	C. D. McCoy
h Stars	Geo. E. Lynn & Co.	936	Red, White Sleeves, Red and White Cap	H. F. Visman
mrocks	C. M. Barry & Co.	937	Red, White Sleeves, Red and White Cap	J. Dichum
	Jno. Robinson	938	Red, White Sleeves, Red and White Cap	J. Uppleby
	J. S. Moles	939	Red, White Sleeves, Red and White Cap	J. J. Dougherty
	Lyle & Palmer	940	Red, White Sleeves, Red Cap	C. H. Gillock & Co.
	J. P. Cuerrin	941	Red, White Spots	T. Fallahee
	J. Logan	942	Red, White Spots	P. McDonald
	Kelder & Mullin	943	Red, White Stars, Black Cap	B. F. Cockerill, Jr.
ed and Wh Cap	W. Stoops	944	Red, White Stars, Black Cap	M. Randolph
	T. Chapman	945	Red, White Stripes, Blue Sash	D. T. Pulsifer
	Gartlan & Murphy	946	Red, Yellow Cap	J. Blanchfill

947	Red, Yellow Cap.....	D. A. Honig	976
948	Red, Yellow Halves and Cap.....	J. La Carroll	977
949	Red, Yellow Sleeves, Red Cap.....	J. H. Morris	978
950	Rose, Black Cap.....	A. Belmont Purdy	979
951	Rose Pink, Light Blue Sash and Cap.....	A. H. Sammis	
952	Rose and White Hoops, Rose Cap.....	A. P. Gardner	
953	Ruby.....	Westbury Stable	980
◆◆◆◆◆			
954	Scarlet.....	J. A. Morris	981
955	Scarlet and Green.....	R. M. Sadler	982
956	Scarlet and Green.....	G. Cook	983
957	Scarlet and White.....	R. A. Lawrence	984
958	Scarlet and White Sash.....	Van Studiford	985
959	Scarlet and White Stripes, Blue Sash.....	P. S. Donovan	986
960	Scarlet, Blue Bars, Black Cap.....	Davis & Hall	987
961	Scarlet, Blue Cap.....	McFarland Stable	988
962	Scarlet, Green Cap.....	W. C. Daly	989
963	Scarlet, Green Sash and Cap.....	W. E. Cotton	990
964	Scarlet, Green Sash and Cap.....	T. Hernon	991
965	Scarlet, Maroon Sleeves and Cap.....	Blemton Stable	
966	Scarlet, Silver Hoops on Sleeves, Star and Crescent, Scarlet Cap.....	Andrew Thompson	992
967	Scarlet, White Cap.....	Washington Stable	993
968	Scarlet, White Sash.....	W. Mulkey	994
969	Silver and Cherry.....	H. O. Eicks	995
970	Silver Gray.....	S. Y. Keene	996
971	Silver Gray, Red and Blue Sash.....	M. Corbett	997
972	Silver Gray, Red and Blue Sash.....	C. T. Perry	998
973	Silver, Red Sleeves and Cap.....	Mr. St. James	999
974	Sky Blue, Maroon Diamonds.....	Fairfax Stable	1000
975	Solferino, Buff and Silver.....	B. G. Thomas	1001

.....D. A. Honig
J. La Carroll
J. H. Morris
A. Belmont Purdy
 Cap.....A. H. Sammis
A. P. Gardner
Westbury Stable

.....J. A. Morris
R. M. Sadler
G. Cook
R. A. Lawrence
Van Studiford
 Sash.....P. S. Donovan
Davis & Hall
McFarland Stable
W. C. Daly
W. E. Cotton
T. Hernon
Blenston Stable

s, Star and
Andrew Thompson
Washington Stable
W. Mulkey
H. O. Eicks
S. Y. Keene
M. Corbett
C. T. Perry
Mr. St. James
Fairfax Stable
B. G. Thomas

976 Stars and Stripes.....J. J. Keith
 977 Stars and Stripes, Black Cap.....Mulkey & Keith
 978 Straw, Green Sleeves, Sash and Cap.....H. T. Roberts
 979 Straw, Orange Sleeves, Blue Cap.....P. Weber

980 Tan.....Farley & Co.
 981 Tan, Black Hoops.....F. E. Schultz
 982 Tan, Blue Cap.....C. W. Medinger
 983 Tan, White Sash, Black Cap.....Davis & Manning
 984 Tartan, Black Sleeves and Cap.....Geo. B. Inches
 985 Tartan, Canary Sleeves and Cap.....R. B. Forbes, Jr.

986 Violet, Plaid Sash.....L. C. Bruce
 987 Violet, White Maltese Cross, Violet and Wh Cap...Ch. Oxx
 988 Violet, White Sash and Cap.....B. F. Cadigan
 989 Violet, White Sash and Cap.....F. M. Woodford
 990 Violet, White Sleeves and Cap.....R. W. Walden
 991 Violet, White Sleeves, Orange Cap.....Jno. A. Morris

992 White.....L. C. Beaman
 993 White.....Brannon Bros.
 994 White.....S. Cohen
 995 White and Blue.....McIrney Stable
 996 White and Blue Braces.....John Daly & Co.
 997 White and Blue Sleeves.....A. O. Gilman
 998 White and Cherry.....J. H. Ernest
 999 White and Red, Blue Sleeves.....C. F. Strain
 1000 White and Red, Blue Sleeves.....H. L. Bond
 1001 White and Yellow, Blue Sash, White and Black
 Cap.....Luke Tully

1002	White Black Cap	F. Hemberger	1085
1003	White, Black Hoops, Red Sleeves and Cap....	J. C. Furman	1083
1004	White, Black Sleeves, Red Cap.....	S. Williams	1083
1005	White, Black Sleeves, Sash and Cap.....	R. G. Tower	1083
1006	White, Black Spots and Cap.....	Rabdash Ranch Stable	1083
1007	White, Blue Cap.....	J. Winter	1083
1008	White, Blue Cap.....	Wm. Lovell	1083
1009	White, Blue Collar and Cuffs, Canary Cap.....	South Brooklyn Stable	104
1010	White, Blue Collar and Cuffs, Canary Cap....	S. W. Street	104
1011	White, Blue Diamonds, Canary and Blue Cap..	Ward Bros.	104
1012	White, Blue Sash.....	S. Barta	104
1013	White, Blue Sash and Cap	C. Van Buren	104
1014	White, Blue Sash, Red Cap,	R. Honey	104
1015	White, Blue Sleeves and Cap.....	Mr. Harbor	104
1016	White, Blue Sleeves, Pink Cap.....	A. C. Benson	104
1017	White, Blue Sleeves, Red and Green Cap.....	P. H. Ryan	104
1018	White, Blue Spots.....	Foxhall Keene	102
1019	White, Blue Stripes, Red Cap	Wynne & Sons	102
1020	White, Blue Stripes, Yellow Cap.....	R. J. Carlin, Jr.	102
1021	White, Cardinal Sleeves.....	Philadelphia Stable	102
1022	White, Cardinal Sleeves and Cap.....	Lambert & Berry	102
1023	White, Cherry Bars on Sleeves and Cap.....	J. W. Whalen	102
1024	White, Cherry Cap.....	Talbot Bros.	102
1025	White, Cherry Sash and Cap.....	G. L. Branch	102
1026	White, Cherry Sash and Hoops	Mr. Madison	102
1027	White, Cherry Sleeves and Cap.....	G. M. Rye	102
1028	White, Crimson Circle and Cap.....	R. C. Roth & Co.	102
1029	White, Gold Sash, Cuffs and Cap.....	Hy. Stull	102
1030	White, Green Harp.....	Ruddy Bros.	102
1031	White, Green Sash and Cap	J. D. Nicholson	102
1032	White, Green Sleeves.....	C. Donovan	102

COLORS.

GOODWIN'S RACING COLORS.

..... F. Hemberger	1033	White, Green Sleeves and Cap.....	J. R. Graham
s and Cap... J. C. Furman	1034	White, Lilac Sash and Cap.....	F. C. Kammerer
..... S. Williams	1035	White, Lilac Sash and Cap.....	J. W. Carter
Cap..... R. G. Tower	1036	White, Orange Hoops.....	W. M. Walker
..... Rabdash Ranch Stable	1037	White, Orange Hoops, Black Tassel.....	C. A. Jordan
..... J. Winter	1038	White, Orange Sleeves and Cap.....	W. L. Scott
..... Wm. Lovell	1039	White, Pink Sleeves and Cap.....	R. Black
anary	1040	White, Purple Hoops, Drab Cap.....	T. Y. Coles
..... South Brooklyn Stable	1041	White, Red Bars on Sleeves.....	C. H. Gage
anary Cap... S. W. Street	1042	White, Red Bars on Sleeves and Cap.....	F. Whalen
and Blue Cap... Ward Bros.	1043	White, Red Hoops, Blue Cap.....	Summit Stable
..... S. Barta	1044	White, Red Polka Dots, Blue Cap.....	J. F. Smith
..... C. Van Buren	1045	White, Red Polka Dots, Blue Cap.....	E. Devine
..... R. Honey	1046	White, Red Sash and Cap.....	R. Roche
..... Mr. Harbor	1047	White, Red Sash, Blue Cap.....	G. S. Kenny
..... A. C. Benson	1048	White, Red Sash, Gray Cap.....	J. M. Batchelor
Green Cap... P. H. Ryan	1049	White, Red Sleeves.....	B. Stufflet
..... Foxhall Keene	1050	White, Red Sleeves and Cap.....	F. Keene
..... Wynne & Sons	1051	White, Red Sleeves, Blue Cap.....	M. McNamara
ap..... R. J. Carlin, Jr.	1052	White, Red Sleeves, Blue Cap.....	M. Ziegler
..... Philadelphia Stable	1053	White, Red Sleeves, White and Red Cap.....	J. Strauss
..... Lambert & Berry	1054	White, Red Sleeves, Yellow Cap.....	R. Burns
and Cap... J. W. Whalen	1055	White, Red Spots.....	F. Ahrens
..... Talbot Bros.	1056	White, Red Stars.....	P. G. Speth
..... G. L. Branch	1057	White, Red Stripes and Cap.....	C. Desmond
s..... Mr. Madison	1058	White, Rose Hoops and Cap.....	Jas. McAdams
p..... G. M. Rye	1059	White, Ruby Sleeves and Cap.....	Ch. Noyes
Cap... R. C. Roth & Co.	1060	White, Scarlet Braces.....	F. T. Walton
..... Hy. Stull	1061	White, Violet Hoops, Drab Cap.....	Garth & Coles
..... Ruddy Bros.	1062	Wine.....	D. Abrams
..... J. D. Nicholson	1063	Wine and Blue.....	J. H. Thompson
..... C. Donovan	1064	Wine, Blue Sash and Cap.....	J. Clugston

1065	Wine, Blue Sash, Orange Sleeves.....	R. Lisle	
1066	Wine, Old Gold Sash.....	W. B. Feland	
1067	Wine, Orange Cuffs, Wine and Orange Cap...	Vivell Bros.	
1068	Wine, Orange Sleeves, Blue Cap.....	Jacobin Stable	

1069	Yellow and Black.....	P. Lorillard, Jr.	1089
1070	Yellow and Black.....	L. M. Nivera	1090
1071	Yellow and Black Checks, Yellow Sleeves, Red Cap.....	Revere Stable	1091
1072	Yellow and Black Stripes.....	Thos. Watkins	1092
1073	Yellow and Black Stripes.....	M. Shields	1093
1074	Yellow and Blue.....	Harry Oelrichs	1094
1075	Yellow and Maroon Halves, Yel and Mar Cap...	C. F. Ungue	1095
1076	Yellow and Red.....	M. McCardie	1096
1077	Yellow, Black Hoops.....	F. K. Seabury	1097
1078	Yellow, Black Sash.....	L. & G. Strauss	1098
1079	Yellow, Black Sleeves, Yel and Blk Cap...	Geo. A. Collins	1099
1080	Yellow, Blue Cap.....	J. Shields	1100
1081	Yellow, Blue Cap.....	T. P. Raymond	1101
1082	Yellow, Blue Cap.....	Wrenwood Stable	1102
1083	Yellow, Maroon Sleeves and Cap.....	Ch. Bosguca	1103
1084	Yellow, Purple Sash and Cap.....	H. Cohen	1104
1085	Yellow, Red and Green Cap.....	Campbell & Henderson	1105
1086	Yellow, Red Cap.....	W. J. Roche	1106
1087	Yellow, Red Cap.....	W. J. Laeal	1107
1088	Yellow, Red Sleeves and Cap.....	J. & J. Swigert	1108
			1109
			1110
			1111
			1112
			1113
			1114

CANADA.

.....R. Lisle
W. B. Feland
Orange Cap... Vivell Bros.
Jacobin Stable

.....P. Lorillard, Jr.
L. M. Nivers
ow Sleeves,
Revere Stable
Thos. Watkins
M. Shields
Harry Oelrichs
and Mar Cap...C. F. Ungue
M. McCardle
F. K. Seabury
L. & G. Strauss
Blk Cap...Geo. A. Collins
J. Shields
T. P. Raymond
Wrenwood Stable
Ch. Bosguca
H. Cohen
Campbell & Henderson
W. J. Roche
W. J. Lalal
J. & J. Swigert

- 1089 Black and Red Stripes Wm. Carson
 1090 Black and Tartan Dr. R. Cralk
 1091 Black, Blue Cap C. Boyle
 1092 Black Body, White Sleeves and Hoops..... A. Smith
 1093 Black Body, Yellow Sash, Yel and Blk Cap... J. E. Segrain
 1094 Black Jacket, Green Cap..... W. E. Owens
 1095 Black Jacket, Maroon Sash, Blue Cap..... S. Maloche
 1096 Black, Pink and Black Sleeves, Black Cap..... R. Bond
 1097 Black, Pink Sleeves, Pink and Black Cap.... W. E. Owens
 1098 Black, Yellow Sash, Black and Yellow Cap..... R. Bond
 1099 Black, Yellow Sash, Black and Yellow Cap... W. E. Owens
 1100 Blue..... G. Forbes
 1101 Blue and Yellow, Yellow Cap..... Osborn Morton
 1102 Blue Body, Yellow Sleeves, Blue Cap.... Rockaway Stable
 1103 Blue Jacket, Cream Sash, Red Cap..... Jno. Smith
 1104 Blue Jacket, Red Sleeves and Cap..... J. Alex L. Strathy
 1105 Blue, Red Cap..... J. A. Donaldson
 1106 Brown and Black..... Chas. Finnie
 1107 Brown Body, Yellow Sleeves and Cap..... Wm. Hendrie
-
- 1108 Canary Alton F. Clark
 1109 Canary..... Red Bank Stable
 1110 Cardinal and Green J. Doane
 1111 Cardinal Body, Blue Sleeves and Cap..... M. Gorman
 1112 Cerise, Black and White Cap..... Fk. Elliot
 1113 Cerise, Black and White Cap..... Pytchley Stable
 1114 Cherry and Gold..... Pytchley Stable

1115	Crimson and Blue Stripes.....	F. A. Campbell	1188	F
1116	Crimson, Black Cap.....	J. P. Dawes	1189	F
<hr/>				
1117	Dark Red and Black Stripes.....	Jno. Wiseman	1140	F
1118	French Gray, Red Sash and Cap.....	Jas. Irwin	1141	F
<hr/>				
1119	Lemon and Blue.....	G. L. Hayden	1142	F
1120	Light and Burnt Orange.....	Lachine Stable	1143	F
1121	Light and Dark Blue.....	H. S. Craik	1144	F
1122	Light and Dark Blue.....	J. Harris	1145	F
1123	Light Blue.....	E. Burgess	1146	F
<hr/>				
1124	Maroon, Blue Sleeves, Black Cap.....	F. H. Penniston	1147	F
1125	Maroon, Blue Sleeves, Black Cap.....	J. E. Penniston	1148	F
1126	Maroon, Blue Sleeves, Red Cap.....	C. H. Penniston	1149	F
1127	Maroon, White Sash, Maroon Cap.....	B. J. Coghlin	1150	F
1128	Nile Green, Orange Sleeves and Cap.....	P. Clinch	1151	F
<hr/>				
1129	Old Gold and Blue.....	T. P. Phelan	1152	F
1130	Old Gold and Cardinal, Old Gold Cap.....	Waverly Stable	1153	F
1131	Old Gold, Black Sleeves and Cap.....	T. Ricketts	1154	F
1132	Old Gold, Brown Sash and Collar, Old Gold and Brown Cap.....	J. D. Shatford	1155	F
1133	Orange and Blue.....	A. W. Croft	1156	F
1134	Orange, Blue Hoops and Cap.....	Dr. C. Sewell	1157	F
<hr/>				
1135	Pale Blue, White Sleeves and Cap.....	Alex. Shields	1158	F
1136	Peacock Green and Orange.....	J. K. White		
1137	Pink.....	P. J. Major		

RS.

GOODWIN'S RACING COLORS.

..... F. A. Campbell
 J. P. Dawes
 Jno. Wiseman
 Jas. Irwin
 G. L. Hayden
 Lachine Stable
 H. S. Craik
 J. Harris
 E. Burgess
 F. H. Penniston
 J. E. Penniston
 C. H. Penniston
 B. J. Coghlin
 P. Clinch
 T. P. Phelan
 Waverly Stable
 T. Ricketts
 Old Gold
 J. D. Shatford
 A. W. Croft
 Dr. C. Sewell
 Alex. Shields
 J. K. White
 F. J. Major

- 1188 Pink.....J. Alex. Stevenson
 1189 Pink and Black.....John Henderson
 1140 Pink and Black Stripes.....A. Louden
 1141 Pink and Blue.....H. McGee
-
- 1142 Red.....R. Minogue
 1143 Red.....G. H. Gilbert
 1144 Red and Black.....L. Dewers
 1145 Red and Black.....R. Hueston
 1146 Red and Blue.....H. Drysdale
 1147 Red and Blue.....Wm. Henderson
 1148 Red and Green.....R. Wilson
 1149 Red, Black Sleeves and Cap... Phair & Higgins
 1150 Red, White and Blue.....John Murphy, Jr.
 1151 Royal Blue, Scarlet Sash, Black Cap.....J. Alex Karney
 1152 Royal Blue, Scarlet Sash, Blue Cap (2d cols.)...J. A. Karney
 1153 Ruby, Old Gold Hoops and Cap.....J. R. Woodward
-
- 1154 Scarlet.....D. W. Campbell
 1155 Scarlet and White Stripes.....A. Gates
 1156 Scarlet and White Stripes, Scar and Wh Cap. Waverly Stable
-
- 1157 White and Brown Jacket, Red Cap.....M. Minogue
 1158 White and Red Jacket, Red and White Cap...Jas. Minogue

INDEX.

It will be noted that several owners have run their horses in different colors.

ABRAMS, D.....	87, 1062	ARNETT, WM.....	190
ACKERMAN, J. N.....	742	ASHE, R. P.....	405
ACKERMAN, N. C.....	696	ASHLOCK, W. M.....	41, 88
ADAMS, J. K.....	892	ASKEY, C.....	768
ADLER, W.....	916	ASKEY, H.....	858
AHRENS, F.....	1055	AUBURDALE STABLE.....	494
ALEXANDER, A.....	666	AYRES, WM. W.....	440
ALEXANDER & Co.....	154	BABCOCK, W. R.....	304
ALEXANDER, J. C.. 771, 804,	915	BADER, C. A.....	502
ALEXANDER, JNO. & Co...	627	BADER, F. E.....	624
ALLAN, J. S.....	20	BAILEY, JNO.....	686
ALLEN, CH. E.....	155	BALDWIN, D. S.....	219
ALLEN, JOSIAH.....	659	BALDWIN, E. J.....	101
ALLEN, W. M.....	394	BALFOUR, DR.....	681
ANDERSON, A.....	29	BALROWNIE STABLE.....	741
ANDERSON, R. J.....	683	BAMFORD, J.....	895
ANDERSON, W. M.....	678	BANAHAN, J. P.....	283
ANGLE & HILDRETH.....	864	BARKLEY, J. E.....	683
APPLEBY & JOHNSON.....	706	BARNES, W. S. & Co.....	613
APPLEGATE BROS.....	227	BARNEY, A. H.....	640
ARLINGTON, W.....	295	BARRETT, M.....	680
ARMSTRONG, C. F.....	87, 96	BARRETT, T. & J.....	280
ARMSTRONG, N.....	247	BARRETT, W. H.....	761
ARNETT, J.....	802	BARRY, C. M. & Co.....	905

BARRY,
BARTA,
BATCHER,
BATE, T
BATHGA
BATMAN
BAXTER
BEACON
BEARD,
BEBUS,
BECK &
BECKER
BEDFOR
BEHMAN
BELL, C
BELL, I
BELL, G
BELL &
BELLEW
BELLEW
BELMON
BENDE
BENNET
BENSON
BERGAN
BERGER
BERNAR
BERNIN
BERRY,

INDEX.

ii

have run their horses

WM..... 199
 P..... 405
 W. M..... 41, 88
 768
 H..... 858
 DALE STABLE..... 494
 W. M. W..... 440
 W. R..... 804
 C. A..... 502
 F. E..... 624
 JNO..... 686
 D. S..... 210
 E. J..... 101
 DR..... 681
 NIE STABLE..... 741
 D. J..... 895
 S. J. P..... 283
 S. J. E..... 638
 W. S. & Co..... 613
 A. H..... 640
 F. M..... 680
 F. T. & J..... 230
 F. W. H..... 761
 C. M. & Co..... 905

BARRY, J..... 330	BEVINS, J. J..... 180
BARTA, S..... 1012	BIDLEMAN & EVANS..... 13
BATCHELOR, H. T..... 326	BIDLEMAN, J. P..... 84
BATCHELOR, J. M..... 1048	BIRMINGHAM, J., JR..... 399
BATE, T..... 929	BLACK, R..... 1089
BATHGATE, C. W..... 310	BLAORAVE & CO..... 604
BATMAN, M..... 9	BLAKE, J. O..... 866
BAXTER & JORDAN..... 647	BLANCHFILL, J..... 891, 946
BEACONSFIELD STABLE	BLENTON STABLE..... 965
(See P. Weber)	BLISS, W. H..... 28
BEARD, F. D..... 770	BLOHM & Co..... 462
BEBUS, J..... 79	BOLL, II..... 875
BECK & Co..... 156	BOND, H. L..... 521, 1000
BECKER, N..... 576	BOOK, W. P. & J. S..... 220
BEDFORD STABLE..... 917	BOOTS, WM..... 214
BEHMAN, L. C..... 992	BORTNER, W. S..... 72
BELL, CLIFTON..... 572	BOSQUES, CHAS..... 1088
BELL, D. D..... 469	BOSTON STABLE..... 404
BELL, G. H..... 884	BOUHRUM, W..... 676
BELL & TIMBERLAKE..... 817	BOULEVARD STABLE..... 241
BELLEW, H. D..... 289	BOWEN, G. W. & Co... 184, 185
BELLEW, H. W..... 157	BOWIE, O..... 798
BELMONT, AUG..... 629	BOWLER, JNO..... 374
BENDER, W. K..... 489	BOYER, A. M..... 925
BENNETT & Co..... 818	BOYLE, W..... 196
BENSON, A. C..... 1016	BRACKETT, C. H..... 656
BENSON, L. W..... 158	BRADFORD, J. H., JR..... 887
BERGANINI, D..... 591	BRADLEY, BROS..... 257
BERGEN STABLE..... 555	BRADLEY, C. W..... 796
BERNARD, H. O..... 698	BRADLEY, O..... 258
BERNINGER, F..... 7	BRADLEY, R..... 146
BERRY, T. M..... 75, 920	BRADY, P. A..... 86

BRADY, WM. M.	25, 73	BRYAN, THEO.	870	CARROL
BRANCH, G. L.	1025	BRYANT, S.	207, 261	CARROL
BRANCH, JAS. R.	367	BRYSON, G. B.	377	CARSON,
BRANDE, R.	718	BUCHANAN, G. R.	459	CARSON,
BRANNIGAN, J. & CO.	486	BUCKLES, WILEY.	95	CARTER
BRANNON BROS.	993	BURCH, W. P.	238	CARTER
BRANNON & COHEN.	103	BURGESS, E.	598	CARTER
BRANNON, J. S. & SON.	300	BURK, J. C.	559	CARTWE
BRANNON, W. R.	297	BURNHAM, A.	187	CASEY,
BRASFIELD, W. R. & Co.	830	BURNS, R.	1054	CASEY,
BRAY, F. M.	628	BUSH, T. H.	487	CASHON
BRIDE, IRA, E.	777	CADDIAN, B. F.	988	CASKEY
BRIEN, W. G., JR.	222	CAHILL, E.	779	CASSATT
BRIEN, W. J.	508	CALDWELL, ED.	775	CASSIDY
BRIGHT, W.	16	CALDWELL, G. S.	284, 695	CASSIDY
BRIGHTON STABLE.	139	CALLAHAN, M. D.	626	CASTLE
BROADWELL, J. M.	56	CALLAHAN, W.	599	CAVAN
BROECK, A. L.	833	CALLAHAN, W. C.	51	CHAPMA
BROLLER, D. A.	684	CAMPBELL & Co.	159, 853	CHAPMA
BROOKS, W. T.	701, 704	CAMPBELL, D.	53	CHAPMA
BROPHY BROS.	481	CAMPBELL, G.	134	CHARLT
BROWN, C. A.	362	CAMPBELL & HENDERSON.	1085	CHASE,
BROWN, H.	597	CAMPBELL, J. W.	309	CHATIA
BROWN, J. M. & Co.	564	CAREY, H.	44	CHEATI
BROWN, P. W.	118, 840	CARLLE, J. N. & Co.	379	CHEEK,
BROWN, S. A.	780	CARLIN, R. J., JR.	1020	CHEEVI
BROWN, S. S.	422	CARMICHAEL, E. L.	173	CHEPPU
BROWN, T. & Co.	688	CARMODY, P. J.	52, 514	CHICAG
BROWNE, E.	343	CAROLINA STABLE.	305	CHICKA
BROWNING, W. T.	400	CARR, DABNEY.	424	CHRIST
BRUCE, L. C.	986	CARROLL, C.	188	CHURCI
BRUCE, S. D.	776	CARROLL, J. J.	411	CLANCY

INDEX.

iv

THEO.....	870	CARROLL, G. & Co.....	512	CLARK, R.....	331
S.....	207, 261	CARROLL & MACK.....	675	CLARK & Co.....	643
G. B.....	377	CARSON, GEO.....	631	CLARK, C. F.....	556
AN, G. R.....	459	CARSON, WM.....	779a	CLARK, JNO S.....	503
S, WILEY.....	95	CARTER, F.....	339	CLARK, M. E.....	569
W. P.....	238	CARTER, J. J.....	441	CLARK, W. B.....	192
S, E.....	598	CARTER, J. W.....	1035	CLAY, GEO. H.....	758
C.....	559	CARTWELL, E.....	769	CLAY, J. B.....	520
AM, A.....	187	CASEY, J.....	573	CLAY, J. M., MRS.....	384
R.....	1054	CASEY, N.....	177	CLAY, J. T.....	639
C. H.....	487	CASHION, J. E.....	648	CLAY & WOODFORD.....	282
N, B. F.....	988	CASKEY, AL.....	117, 119, 437	CLIFTON STABLE	
E.....	779	CASSATT, A. J.....	900	(see Cohen, H.)	
ELL, ED.....	775	CASSIDY, J. N.....	714	CLINCH, P.....	635
ELL, G. S.....	284, 695	CASSIDY, W. L.....	42	CLOSE, F. B.....	417
IAN, M. D.....	626	CASTLE STABLE.....	371	CLUGSTON, J.....	1064
IAN, W.....	599	CAVANAGH, C.....	209	CLYDE STABLE.....	749
IAN, W. C.....	51	CHAPMAN & LIDDELL.....	588	COBURN & Co.....	47
ELL & Co.....	159, 658	CHAPMAN, P.....	178	COCHRAN, J.....	319
ELL, D.....	53	CHAPMAN, T.....	913	COCHRANS, J.....	515
ELL, G.....	184	CHARLTON, F.....	810	COCKRILL, B. F., Jr.....	948
ELL & HENDERSON.....	1085	CHASE, J. B.....	43, 82	COGAN, P. F.....	480
ELL, J. W.....	309	CHATHAM STABLE.....	356	COHEN, H.....	1084
H.....	44	CHEATHAM, W. B.....	848, 931	COHEN, S.....	994
E, J. N. & Co.....	379	CHEEK, N. T.....	469a	COLES, T. Y.....	1040
I, R. J., JR.....	1020	CHEEVER, J. D.....	151	COLGAN, T.....	276
HAEL, E. L.....	178	CHEPPU, W. H.....	407	COLLIER, B. F.....	453
DY, P. J.....	52, 514	CHICAGO STABLE.....	11	COLLINS, GEO. A.....	1079
INA STABLE.....	305	CHICKASAW STABLE.....	785	COLLINS, W. L. & Co.....	109
DABNEY.....	424	CHRISTY, J. & J.....	846	COLUMBIA STABLE.....	274
LL, C.....	188	CHURCH, JNO.....	529	CONGRESS STABLE.....	160
LL, J. J.....	411	CLANCY, M.....	574	CONNELLY, J.....	934

CONNER, WM.	781	CURWIN, W. A.	755	DONOHUE
CONNOR, WM. M.	128	CUSENBERRY, J. D.	859	DONOVAN
CONNOLLY, J. J.	842	CUSHING, J. E.	262	DONOVAN
COOK, G.	956	DALRYMPLE & ALEXANDER.	85	DORAN
COOK, J. W.	255	DALTON, T.	620	DOREM
COOK, J. E.	625	DALY, JOHN, & CO.	996	DOREM
COOK, W. R.	180	DALY, M. J.	718	DORSEY
COOLEY, J.	609	DALY, W. C.	962	DOSWELL
COONLEY, J.	129	DANAHER, M. T.	294	DOSWELL
COOPER, S. L.	239	DANIELS, J.	218	DOTY
CORBETT, M.	971	DAVIES, G.	809	DOUGHERTY
CORNELIUSSEN, C.	362	DAVIES, L. H.	24	DOUGLASS
CORR, T.	265	DAVIS & CO.	78, 812	DOWNING
CORRIGAN, E.	580	DAVIS, H.	581	DOWNING
CORRIGAN, F.	252	DAVIS, JAS. F.	60	DOWNING
CORRIGAN, P.	558	DAVIS, J. E.	202	DOYLE
COTTON & BOYLE.	99	DAVIS, D. D.	772	DOYLE
COTTON, J.	316	DAVIS, JNO.	216	DRANE
COTTON, W. E.	963	DAVIS & HALL.	900	DUFFY
CRAWFORD, J. W.	762	DAVIS & MANNING.	963	DUKES
CRAWFORD, S. S.	783	DAVIS & RUCKER.	203	DUNN
CREOLE STABLE.	823	DAWS, H.	723	DUNN
CROKER, J.	195	DE LONG, J.	233	DURHAM
CROUSE, S. E.	323	DEMPSEY, J. W.	142	DWYER
CROWLEY, E. E.	358	DESMOND, C.	1057	EHLER
CRUME, P. D.	128	DEVINE, E.	1045	EICKS
CRUME, P. L.	861	DICHUM, J.	937	ELDER
CRYSLER, THOS.	225	DILLARD, J. H.	10	ELLIOTT
CUERRIN, J. P.	909	DODD, W. M.	246	ELMON
CURRAN, L.	522	DONAHUE, P. J.	468	ELRIC
CURRY, F. B.	420	DONOHUE, G.	554	ELTER
CURTIS & NEPPER.	645	DONOHUE, JOS. JR.	722	EMERY

INDEX.

vi

W. A.	753	DONOHUE, Wm.	823	EMERY, S., & Co.	204
RY, J. D.	859	DONOVAN, C.	1032	ENGLEMAN & FIELDS.	745
J. E.	262	DONOVAN, P. S.	959	ENGLEMAN, J. W.	734
PIE & ALEXANDER.	85	DORAN, JAS. M.	341	ERNEST, J. H.	908
T.	620	DOREMUS, G.	290	ERZINGER, P.	855
OHN, & Co.	996	DOREMUS, G. D.	143	EVANS, A. J.	40
I. J.	713	DORSEY, C.	336	EXCELSIOR STABLE.	787
W. C.	962	DOSWELL, T. B.	699	FAIRFAX STABLE.	974
ER, M. T.	294	DOSWELL, T. W.	607	FALLAHEE, T.	941
S, J.	218	DOTY, C. K.	74	FANNIN, D. C., & Co.	537
G.	308	DOUGHERTY, J. J.	508, 939	FARLEY & Co.	980
L. H.	24	DOUGLASS, N. J.	797	FARRIS, B.	534
& Co.	78, 812	DOWNING, G. W.	616	FEE, J. H.	644
H.	531	DOWNNS, J.	862	FEENEY & GILLESPIE.	162
JAS. F.	60	DOWNTON, R. L.	819	FELAND, W. B.	1066
J. B.	202	DOYLE, C.	560	FENNIMORE BROS.	490
D. D.	772	DOYLE, M.	391	FERGUSON, J.	427
JNO.	216	DRANEY, THOS. M.	396	FERGUSON, J. B.	798
& HALL.	900	DUFFY, P. H.	357	FIELDS, L. B.	746
& MANNING.	983	DUKES, J. M.	253	FIELDS, W.	389
& RUCKER.	203	DUNN, JERE & Co.	365	FIELDS, W., JR.	735
H.	723	DUNN, W. A.	496	FIELDS, W. M., Jr.	747
NG, J.	233	DURHAM, H. B.	801	FINK, J. A.	306
EY, J. W.	142	DWYER BROS.	849	FINUCAN, THOS.	336
ND, C.	1057	EHLERS, L.	602	FISHER & Co.	535
E, E.	1045	EICKS, H. O.	499, 969	FISHER, P.	754
M, J.	937	ELDER, M.	543	FLATBUSH STABLE.	430
RD, J. H.	10	ELLIOTT, J. V.	401	FLINN, P. J.	847
W. M.	246	ELMORE, L.	161	FLYNN, J.	653
HUE, P. J.	468	ELRICK, Wm.	827	FOLEY, J.	527
HUE, G.	554	ELTER, J.	692	FORBES, R. B., Jr.	985
HUE, Jos. Jr.	722	EMERY, S.	473	FORCE, G.	17

FOSTER, G. F., JR.....	55	GORMAN & HAIG.....	788
FRENCH, T.....	133	GRAHAM, J. R.....	1033
FUNK, JOHN.....	489	GRATZ, W.....	90
FUQUA, W. M.....	288	GRAY, JAS., & Co.....	766
FURMAN, J. C.....	1008	GREEN & ROBERTS.....	681
GAGE, C. H.....	1041	GREENER, J. G.....	351
GALWAY, JAS.....	149	GRIFFIN, JAS.....	538
GANLEY & Co.....	194	GRIFFIN & BRADBURY.....	638
GARDEN CITY STABLE.....	454	GRILL, P.....	649
GARDNER, A. P.....	956	GRIMES, G. B.....	854
GARDNER, E. S.....	980	GRIMSHAW, S.....	228, 307
GARRETT, L. J.....	182	GRISWOLD, F. GRAY.....	871
GARRISON, C. J.....	127	GROVES, S. L.....	689
GARTH & Co.....	497	GUEST, J. W.....	708
GARTH & COLES.....	1061	HAAS, C. L.....	92
GARTLAN & MURPHY.....	914	HAGGIN, J. B.....	635
GASAWAY, L. P.....	866	HALPIN, P.....	617
GAY & Co.....	291	HAMBRICK, JNO.....	908
GEBHARD, F.....	873	HANCOCK, G. W.....	773
GIBSON, D.....	3	HANKINS, AL.....	163
GILL, GEO.....	277	HANKINS, GEO. V.....	80
GILLESPIE, W.....	668	HANNIGAN, JNO.....	32
GILLESPIE & FEENEY (See Feeney & Gillespie)		HARBECK, J. H.....	382
GILLOCK, C. H., & Co.....	940	HARBOR, Mr.....	1015
GILMAN, A. O.....	376, 997	HARDING, W. H., & Co...	751
GIVENS, J. B.....	153	HARPER, F. B.....	700
GLENMORE STABLE.....	112	HARRIS, B. G.....	679
GOODMAN, T. A.....	205	HARRIS, J.....	211
GOODWIN, A. B.....	346	HARRIS, J. L.....	260
GORDON, J.....	317	HARRIS, R.....	381
GORMAN, P.....	852	HART, L.....	583
		HAYDEN, G. L.....	248

HAYD
HAYD
HAYE
HAYE
HEAR
HEAR
HEFF
HEMB
HEME
HEMP
HENR
HENT
HERN
HES
HICK

HIGH
HILG
HILL
HILL
HILT
HOG
HOG
HOLL
HOLL
HON
HON

HOP
HOP
HOR

INDEX.

viii

HAIG.....	788	HAYDEN, Mr.....	822	HOWARD, H.....	643
J. R.....	1033	HAYDON & BARRY.....	361, 457	HOWARD, H. T.....	416
.....	90	HAYES, J. W.....	854	HOWSON, G.....	495
, & Co.....	766	HAYES, W.....	164	HOYLE, F.....	285
ROBERTS.....	681	HEARD, D.....	15	HUBBARD & Co.....	337
J. G.....	851	HEARNE, T.....	510	HUDSON STABLE.....	709
JAS.....	538	KEFFNER, E. W.....	334	HUGHES, C.....	544
& BRADBURY.....	638	HEMBERGER, F.....	1002	HUGHES, C. H.....	725
.....	649	HEMENWAY, A.....	470	HUGHES, ED.....	888
B. B.....	854	HEMPSTEAD STABLE.....	474	HUGHES, P.....	646
, S.....	228, 307	HENRY, JOHN.....	243	HUMMEL, W.....	263
D, F. GRAY.....	871	HENTZ, H., Jr.....	215	HUNTER, ARTHUR M.....	693
S. L.....	689	HERNON, JAS.....	443	HURDIC, C. H.....	272
W.....	708	HERNON, T.....	964	HURRICANA STABLE.....	760
L.....	92	HESSLER, C.....	408	HURSTBOURNE STABLE.....	144
J. B.....	655	HICKORY STABLE		HUSTON, W.....	708
P.....	617	(See Davis, D. D.)		HUTCHINSON, R. J.....	28
K, JNO.....	908	HIGHLAND PARK STABLE.....	715	HYNES, J.....	603
C, G. W.....	778	HILGERT, M.....	634	HYLAND, J. J.....	124
, AL.....	163	HILL, B.....	438	INCHES, GEO. B.....	984
, GEO. V.....	80	HILLSIDE STABLE.....	740	IRELAND, J. T.....	671
N, JNO.....	32	HILTON, E. M.....	791	IRVING STABLE.....	491
C, J. H.....	393	HOGAN, J.....	753	ISAACS, J.....	352
Mr.....	1015	HOGAN, M.....	807	ISOLA, J. M.....	590
, W. H., & Co.....	751	HOLLAR, V.....	825	JACKSON, D.....	448
, F. B.....	700	HOLLOWAY, S. E.....	113	JACKSON, S. D.....	730
B. G.....	679	HONEY, R.....	1014	JACOBIN STABLE.....	1068
J.....	211	HONIG, D. A.,		JAMES, L.....	983
J. L.....	280	412, 413, 820, 879, 880, 947		JEFFCOT, J. M.....	81
R.....	881	HOPEDALE STABLE.....	122	JENNINGS, W.....	324
.....	553	HOPSON, R. W.....	395	JENNINGS, W. B.....	303
, G. L.....	248	HORSESHOE STABLE.....	278	JERSEY CITY STABLE.....	327

JILSON & CHAPMAN.....	524	KESSLER, L.....	200
JOHNSON, A. G.....	794	KETCHUM, L. R.....	460
JOHNSON, C.....	496	KEYSTONE STABLE.....	739
JOHNSON, E. Y.....	388	KILEY, T.....	687
JOHNSON, M. A.....	268	KILLEA, M.....	401
JOHNSON, A.....	498	KIMBEL, H. E. & Co.....	270
JOHNSON, HY.....	286	KING, C., JR.....	752
JOHNSON, J.....	140	KING, T.....	259
JOHNSON, R. A., & Co.....	254	KIRKMAN, V. L.....	733
JONES, F. A.....	138	KIRKPATRICK, R. T.....	198
JONES, F.....	105	KITSON, N. W.....	511
JONES, F. D.....	482	KLEIN, J., & Co.....	918
JORDAN, C. A.....	1037	KNOTT, LEVI.....	736
JORDAN, M.....	611	KNOX, L.....	299
JORDAN & MARTIN.....	30	KOLLMAYER, M.....	328
JUDSON, H. C.....	657	KRAMER, A.....	548
KAHN, B.....	240	LABOLD BROS.....	393
KAMMERER, F. C.....	410a-1084	LACAL, W. J.....	799, 1087
KANE, J. J.....	504	LA CARROLL, J.....	948
KEARNS, T.....	577	LACE, D.....	596
KEENE, F.....	1050	LACY, J.....	455
KEENE, FOXHALL.....	1018	LAKELAND, A.....	922
KEENE, S. Y.....	970	LAKELAND, W.....	137
KEITH, J. J.....	976	LAKE VIEW STABLE.....	6
KELDER & MULLIN.....	911	LA MASNEY BROS.....	815
KELLY, C. J.....	445	LAMBERT & BERRY.....	1023
KEMPTON, P.....	314	LAMBERT, W. B.....	57
KENNEDY, W. J.....	589	LARABEE, S. E.....	921
KENNEY, G. S.....	1047	LARAWAY, B. J.....	398
KENNY, J.....	731	LATHROP, T.....	217
KERNAGHAN, G. H.....	756	LAUDEMAN, W. H.....	518
KERNOCHAN, J. L.....	543	LAURELWOOD STABLE (Sec Donahue, P. J.)	

LAWRIE
LAWRIE
LEE, S
LE FE
LE FE
LEGG,
LEIGH
LEONA
LETCHE
LEVIN
LEVY

LEWIN
LEXIN
LILLY
LINW
LINEL
LISLE,
LISLE,
LITTL
LIVING
LOYE
LOGAN
LONE
LONG,
LONG
LONG
LONX,
LORIL
LORIL
LORIL

..... 200
 L. R. 460
 STABLE..... 789
 687
 M 401
 E. & Co 270
 R..... 752
 259
 V. L 783
 CK, R. T 198
 W 511
 & Co 918
 VI 736
 209
 R, M 328
 548
 ROS..... 393
 J..... 799, 1087
 LL, J 948
 596
 455
 A 923
 W 187
 W STABLE..... 6
 Y BROS..... 815
 & BERRY..... 1022
 W. B..... 57
 S. E..... 921
 B. J..... 898
 T..... 217
 W. H..... 518
 OOD STABLE
 (See Donahue, P. J.)

INDEX.

x

LAWRENCE, J.....	601	LORILLARD, P., Jr.....	1069
LAWRENCE, R. A.....	957	LOUD, J. W. & R. H.....	408
LEE, S.....	550	LOUDEN, A.....	652
LE FEVRE, O. E.....	641	LOUGHRAN & Co.....	175
LE FEVRE, R.....	120	LOUISIANA STABLE.....	690
LEGG, L. A.....	48	LOVELESS, A. S.....	541
LEIGH, EUGENE.....	349	LOVELL, WM.....	1008
LEONARD, M. J.....	165	LUCAS, R. J.....	89
LETCHER, W. R.....	881	LUZENBERG, H.....	383
LEVINUS, C.....	174	LYLE & PALMER.....	908
LEVY & TREACY (see Treacy & Levy).		LYNCH, M. M.....	805
LEWINISKI, H.....	385	LYNCH & JONES.....	267
LExINGTON STABLE.....	826	LYNN, GEO. E. & Co.....	904
LILLY, F. M.....	240	MACK, P.....	765
LINWOOD STABLE.....	876	MACK, H.....	829
LINELL, W. B.....	655	MADDOX, R. E.....	784
LISLE, R.....	1005	MADDOX, W. H.....	181
LISLE, R. & Co.....	705	MADISON, Mr.....	1026
LITTLE, THOS.....	66	MADISON STABLE.....	306
LITTLEFIELD, C.....	37	MAFFITT, C. C.....	363, 691
LIVINGSTON, R. C.....	663	MAGNOLIA STABLE.....	210
LLOYD, J. L.....	369	MAHONE, C.....	229
LOGAN, J.....	910	MAHONE, CHAS. E.....	322
LONE STAR STABLE.....	54	MAHOY & PORTER.....	355
LONG, C. B.....	309	MAHWAH STABLE.....	59
LONG ISLAND STABLE.....	600	MALARKEY, T.....	472
LONG & LEWIS.....	677	MALLON, P.....	463
LONX, W.....	844	MALTESE VILLA FARM (see Ashe, R. P.)	
LORILLARD, G. L., Mrs.....	251	MANEE, P.....	811
LORILLARD, L. L.....	22	MARKSTONE, H. D.....	243
LORILLARD, N. G.....	415	MARTIN, A.....	201

MARTIN, B. V.....	188	McCULLOUGH & SAVAGE...	456
MARTIN, E.....	275	McDERMOT, J. P.....	546
MARTIN, L.....	561	McDONALD, F.....	887
MARVIN & DOUGLAS.....	928	McDONALD, J. E.....	126
MASON, J. & SON.....	650	McDONALD, P.....	942
MATHESON, J. D.....	637	McELHONE, JAS. F.....	767
MATLOCK, BROS.....	471	McELMEEL, E. J.....	308
MATTHEWS, F. W.....	861	McFADDEN, J. G.....	884
MAUFER, GEO. W.....	595	McFARLAND STABLE.....	961
MAY, W. H.....	757	McGUIGAN, W.....	654
MAYNARD, R. M. & Co.....	682	McGUIGAN, R.....	582
McADAMS, JAS.....	1058	McGUIRE, E. A.....	888
McARDLE, M.....	410	McIRNEY STABLE.....	995
McBRIDE, R.....	587	McINRNEY & SON.....	578
McCAMPBELL, A. G.....	107	McINTYRE & SWINEY.....	286
McCAMPBELL, A. G. & Co..	630	McIVER, J. T.....	863
McCANN, R.....	729	McKEE, J. R.....	789
McCARDIE, M.....	1076	McKENNA, P.....	587
McCARRON, H., Jr.....	21	McKINNEY, J.....	886
McCARHY, A., Sr.....	198, 800	McMAHON, P. H.....	869
McCARTY, P.....	887	McMAHON & GARRISON...	615
McCAULEY, P.....	547	McNAMARA, M.....	1051
McCAUL, T.....	665	McNAMEE, J.....	622
McCLELLAND, J. M.....	347	MEADOR, M.....	832
McCLELLAND, BYRON.....	538	MEAGHER, J. T.....	882
McCLELLAND, W.....	19	MEDINGER, C. W.....	962
McCOLL, D. J.....	585	MEGIBBEN, J. K.....	670
McCORMICK, J. H.....	418	MEGIBBEN, T. J.....	694
McCoy, C. D.....	935	MELBOURNE STABLE	
McCREERY, J. H.....	406	(see Barnes, W. S. & Co.)	
McCULLOUGH, A. F.....	557	MEREDITH, D.....	145
McCULLOUGH, J. M.....	487	MEREDITH, R. W.....	838

MERRI
MERRI
METZ, J
MIDDLE
MILLER
MILLIO
MILLS,
MITCH
MITCH
MITCH
MITCH
MITCH
MOLES
MONCH
MONC
MONTG
MOON
MOOR
MOOR
MORA
MORR
MORR
MORR
MORR
MORT
MORT
MOSH
MULC
MUL
MUL

INDEX.

xii

H & SAVAGE... 456	MERRILL, J. J. & Co..... 287	MURPHY, B..... 110
J. P..... 546	MERRITT, J..... 4	MURPHY, C..... 212
, F..... 337	METZ, L..... 919	MURPHY, I..... 579
J. E..... 126	MIDDLETON, W. G..... 782	MURPHY, JAS..... 505
P..... 942	MILLER, T. N..... 711	MURRAY, W. M..... 318
JAS. F..... 767	MILLION, B. B..... 77	NAGLE, D..... 584
E. J..... 308	MILLS, A..... 660	NELSON, C..... 553
J. G..... 884	MITCHELL, E. J..... 141	NEVINS, J..... 619
D STABLE..... 961	MITCHELL, J. W..... 84	NEWARK STABLE..... 298
, W..... 654	MITCHELL, JOSHUA..... 478	NEWTON, H. A..... 759
, R..... 532	MITCHELL, M. L..... 61	NICHOLSON, J. D..... 1081
E. A..... 888	MITCHELL & PRICE..... 318	NIVER, W. M..... 12
STABLE..... 995	MOLES, J. S..... 907	NIVERS, L. M..... 1070
& SON..... 578	MONCKS, C..... 477	NIXON, G. W..... 492
& SWINEY..... 286	MONMOUTH STABLE..... 872	NIXON, JOHN..... 191
T..... 863	MONTGOMERY STABLE..... 402	NYON, JNO. B..... 329
R..... 789	MOONEY, C..... 442	NOLAN, M. N..... 513
P..... 587	MOORE, C..... 18	NOYES, CHAS... 1059
, J..... 886	MOORE, T. W..... 385	NUCE, J. H. & Co..... 434
, P. H..... 869	MORAN, J..... 232	NUNGESSER, Hy..... 582
t & GARRISON..... 615	MORRIS, G. B..... 764	OAKWOOD STABLE..... 528
IA, M..... 1051	MORRIS, H. J..... 447	O'CONNOR, D..... 530
E, J..... 822	MORRIS, JNO. A..... 991	OCTO STABLE..... 536
M..... 892	MORRIS, J. A..... 954	OELRICHS, HARRY..... 1074
t, J. T..... 862	MORRIS, J. H..... 249	ODDEN STABLE..... 421
R, C. W..... 962	MOURISSEY, J. D..... 506	OLD MILL STABLE..... 744
N, J. K..... 670	MORTIMER, STANLEY..... 419	OLIVER, J..... 428
N, T. J..... 694	MORTON, OSBORN..... 899	OLNEY, H..... 605
RNE STABLE	MOSHIER, D. H..... 476	OLNEY, W..... 333
Barnes, W. S. & Co.)	MULCAHY, P..... 717	O'NEIL, CHAS..... 618
H, D..... 145	MULKEY & KEITH..... 271, 977	OOTS, H. F..... 81
H, R. W..... 333	MULKEY, W..... 968	OPEQUON STABLE..... 364

ORIOLE STABLE.....	125	PHILADELPHIA STABLE.....	1021	RANDALL
ORKNEY STABLE.....	851	PHILLIPS, E. W.....	285	RANDOLP
OSBORN, H.....	860	PHILLIPS, W. D.....	98	RAYMOND
OTTMAN, W. H.....	586	PHENIX STABLE.....	400	RAYMOND
OWENS, J. W.....	636	PIEDMONT STABLE.....	982	RAY & M
OWENS, W. M.....	98	PINTON, WM.....	168	RED BAN
OWENS, R. H. & Co.....	312	POOLE, G. W.....	378	REDDING
OWINGS, R. R.....	386	PORTER, F. P.....	182, 264	REDFIELD
OXFORD STABLE.....	606	PORTER, P. P.....	181	REDMON
OXX, CH.....	987	PORTLAND STABLE.....	425	REED, G
PAGE, KEENE.....	581	POWERS, R. H.....	234	REICHER
PALISADE STABLE.....	115	PREAKNESS STABLE		REILLY,
PALO ALTO STABLE		(see Galway, Jas.)		REVERE
(see Stanford, Leland)		PRICE, E. W.....	850	RICE, GE
PARAGON STABLE.....	50	PRICE, J. N.....	738	RICHARD
PARK, G. F.....	464	PRICE & MITCHELL (see Mit-		RITEND
PARKER, JAS.....	484	chell & Price)		RIVERS,
PARVILLE STABLE.....	426	PRITCHARD, C.....	821	RIVERSD
PATE, R. C.....	189	PRITCHARD, W. L.....	608	ROBERTS
PATTERSON, J.....	865	PRYOR, J. B.....	465	ROBINSO
PATTON, J. D.....	890	PRYOR, J. B., Jr.....	475	ROBINSO
PAWNEE STABLE.....	607	PRYOR, R.....	414	ROBSON,
PAXTON BROS.....	526	PULFORD, J. D.....	26	ROCHE,
PAUL, J. M.....	732	PULSIFER, D. T.....	945	ROCHE,
PERNE, JAMES.....	49	PURCELL, E.....	482	ROCKAW
PENN, W. & Co.....	287	PURDY, A. BELMONT.....	950	RODEGA
PERRY, C. T.....	972	PURYEAR, T.....	710	ROGAN,
PERSONS, R. J.....	166	QUEENS COUNTY STABLE... 116		ROLLIN
PETERS, J. S.....	167	QUINN, J. B.....	594	ROOT, H
PETTINGILL, C. H.....	429	RABDASH RANCH STABLE... 1006		ROTH, F
PETTIT, B. F.....	324	RAMAPO STABLE.....	86	ROWE, J
PHELAN, T. P.....	651	RANDALL, B. C.....	58	RUDDY

INDEX.

xiv

IA STABLE	1021	RANDALL, J. B. & Co	824	RUTHERFORD & McCLELL-	
E. W.	285	RANDOLPH, M.	944	LAND	519
V. D.	98	RAYMOND, T. P.	1081	RYAN, P. H.	1017
ABLE	409	RAYMOND, THOS.	697	RYE, G. M.	1027
TABLE	982	RAY & McEvoy	114	SADLER, R. M.	955
M.	168	RED BANK STABLE	778	SAGE, F. E.	885
V.	378	REDDING BROS	768	SAMMIS, A. H.	951
P.	182, 264	REDFIELD, J.	748	SANFORD, J.	45
P.	181	REDMOND, W.	423	SANFORD, W. C.	46
STABLE	425	REED, GEO	814	SANFORD, WM.	169
H.	234	REICHERT, Mr	570	SARATOGA STABLE	281
STABLE		REILLY, J., & Co	273	SANTA ANITA STABLE	
(see Galway, Jas.)		REVERE STABLE	1071	(see Baldwin, E. J.)	
W.	850	RICE, GEO. H.	332	SAVAGE, D. F.	721
T.	738	RICHARDSON, J. B.	885	SAVAGE, J.	446
MITCHELL (see Mit-		RITTENHOUSE, F	450	SCAMAN, W. B.	479
rice)		RIVERS, J.	348	SCARBOROUGH, W. B.	857
, C.	821	RIVERSIDE STABLE	737	SCHLEICK, C. F.	621
, W. L.	608	ROBERTS, H. T.	978	SCOLES, W. J.	449
B.	465	ROBINSON, F.	593	SCOTT, W. L.	1088
B., Jr.	475	ROBINSON, JNO.	906	SCHLUTIUS, CHAS.	303
.	414	ROBSON, P. P	111	SCHULTZ, F. E.	981
J. D.	26	ROCHE, R.	1046	SCOGGAN & BRYANT.	250
D. T.	945	ROCHE, W. J.	1086	SCOGGAN, GEO.	208
E.	482	ROCKAWAY STABLE	152	SCULLY, W. O.	320
BELMONT.	950	RODEGAP, J.	841	SEABURY, FK.	1077
T.	710	ROGAN, W. R.	816	SEDDENS, W. L.	170
COUNTY STABLE	116	ROLLINS, W	571	SEGRAM, J. E.	148
B.	594	ROOT, H. G	279	SEXTON, S. M.	8
RANCH STABLE	1006	ROTH, R. C. & Co	1028	SEYFRIED, J.	928
TABLE	36	ROWE, J. & Co	311	SHADLEY, W. H.	269
B. C.	58	RUDDY BROS	1030	SHANNON, O.	893

SHAW, JNO. S.....	894	STEVENS, T. H.....	76
SHAWHAN, J. S.....	83	STEWART, F. R.....	69
SHELTON, W. C.....	889	STEWART, G. W.....	748
SHERIDAN, M.....	719	STEWART, JOHN A.....	509
SHIELDS, J.....	1080	STEWART, J. T. & SON.....	88
SHIELDS, M.....	1078	ST. JAMES, Mr.....	978
SLEIGHT, E.....	89	ST. JOHN, W. G.....	780
SMALLWOOD, J. P.....	872	STOKES, W. L.....	614
SMALLWOOD, R.....	859	STOOPS, W.....	912
SMITH, A.....	135	STORM, E.....	102
SMITH, H. E.....	658	STORMS, E.....	91
SMITH, J. C.....	100	STOUT, J.....	63
SMITH, J. F.....	1044	STRAIN, C. F.....	999
SMITH, M.....	171	STRATTON, M. E.....	14
SNEDEKER, E. V. & Co.....	375	STRAUS, L. & G.....	790, 1078
SNELL, W.....	610	STRAUSS, J.....	1053
SNOWBALL STABLE.....	71	STRAUSS, S.....	182
SNYDER, N. H. & Co.....	281	STREVER, S. C.....	370
SOUTH BROOKLYN STABLE.....	1009	STREET, S. W.....	1010
STAFFORD, L. M.....	5	STUFFLET, B.....	1049
SPENT THRIFT STABLE.....	296	STULL, HY.....	1029
SPETH, P. G.....	1056	SULLIVAN, C.....	582
SPRIGGS, R. H.....	64	SUMMIT STABLE.....	1043
SPRING VALLEY STABLE.....	33	SURGET, JAS.....	702
STANFORD, LELAND.....	245	SWAN STABLE.....	488
STAPLE, I.....	381	SWIGERT, J. & J.....	1038
STANTON, P.....	553	SWIGERT, R. A.....	342
STARK, R.....	563	SWOPE, T. H.....	672
ST. CLOUD STABLE.....	674	TALBOT BROS.....	1024
STEMPLE, GEO. L.....	901	TAYLOR, F.....	493
STEPHENSON, W. H.....	292	TAYLOR, W. T.....	893
STERNB, ED.....	94	TERRY, C. & Co.....	792

TRAYER
 THOMAS
 THOMAS
 THOMAS
 THOMAS
 THOMP
 THOMP
 THOMP
 THUDIC
 TIMMON
 TINDA
 TOBIN,
 TODD,
 TODRU
 TOMPK
 TOMPK
 TOWER
 TOWER
 TREAC
 TREMC
 TRIMM
 TUCKE
 TUCKE
 TULLY
 TULLY
 TURF
 TURN
 ULLM
 ULLM
 UNCH
 UNGU
 UNIO

INDEX.

xvi

T. H.	76	THAYER & Co.	173	UPPLEBY, J.	938
F. R.	69	THOMAS, B. G.	975	VANGUARD STABLE.	302
G. W.	748	THOMAS, C.	845	VAN BUREN, C.	1013
JOHN A.	509	THOMAS, HENRY	500	VAN KEUREN, W.	897
J. T. & SON.	38	THOMAS, R. W.	226	VAN STUDIORD.	958
s, Mr.	978	THOMPSON, ANDREW.	966	VERITAS STABLE	539
W. G.	750	THOMPSON, J.	525	VINGUT, G. F.	523
W. L.	614	THOMPSON, J. H.	1063	VINGUT, H.	728
W.	912	THUDICHUM, C. L.	874	VISEMAN, H. F.	936
L.	102	TIMMONS, W. H.	397	VIVELL BROS.	1067
E.	91	TINSDALE & HOUSTON.	662	VOORHEES, A.	444
	63	TOBIN, P.	244	WACHTER, E. G.	293
C. F.	999	TODD, A. L.	373	WAKELY, J.	707
N, M. E.	14	TODHUNTER, L. H.	108	WALDEN, JETER.	452
L. & G.	790, 1078	TOMPKINS, G. R.	206	WALDEN, J. F.	97
J.	1053	TOMPKINS, J. J.	221, 712	WALDEN, M. A.	435
S.	132	TOWER, A. C.	451	WALDEN, R. W.	990
t, S. C.	370	TOWER, R. G.	1005	WALDO, D.	344
S. W.	1010	TREACY & LEVY.	868, 924	WALKER, W.	481
ET, B.	1049	TREMONT STABLE.	664	WALKER, W. E., & Co.	669
HY.	1029	TRIMMER, E. A.	368	WALKER, W. M.	1036
N, C.	582	TUCKER, A. C.	774	WALNUT GROVE STABLE.	253
STABLE.	1043	TUCKER, R.	197	WALTERS, G. B.	501
JAS.	703	TULLY, L.	575	WALTON, F. T.	1060
TABLE.	488	TULLY, LUKE.	1001	WARD BROS.	1011
T, J. & J.	1038	TURF STABLE.	121	WARD, E. J.	380
T, R. A.	342	TURNER, T.	565	WARD, GEO.	551
T. H.	372	ULLMAN, J. F.	724	WARD, J.	856
BROS.	1024	ULLMAN, JOS.	858	WARDER, JOS.	433
F.	493	UNCHEK, CHAS.	795	WARE, F. M.	459
W. T.	893	UNGUE, C. F.	1075	WASHINGTON STABLE.	967
C. & Co.	792	UNION STABLE.	877	WATKINS, THOS.	1072

WATKINS, T. & SON.....	270	WILKERSON, B. E.....	173
WAVERLY STABLE.....	303	WILLIAMS, J.....	350
WEATHERFORD, C.....	241	WILLIAMS, J. T.....	104
WEBB, G.....	720	WILLIAMS, S.....	1004
WEBB, WASH.....	340	WILLIAMSON, W. H.....	179
WEBER, P.....	979	WILLINGMEYER, J.....	35
WEIDENER, W. J.....	873	WILSON, G. D.....	223
WEIGART, J. B.....	27	WILSON, ROBT.....	566
WEINGARDT, A. W.....	213	WINTER, J.....	1007
WEIR, F. D.....	839	WISEMAN, O. F.....	517
WEISIGER, R. & N.....	325	WITHERS, D. D.....	2
WELD, W. F.....	147	WITHERS, GEO. W.....	345
WELLINGTON STABLE.....	190	WOLF, H. C.....	516
WELSH, M.....	507	WOMACK, J. M.....	878
WESTBURY STABLE.....	623, 953	WOOD & BOYER.....	928
WEST END STABLE.....	720	WOODFORD, B.....	466
WEST SIDE STABLE.....	65	WOODFORD, F. M.....	989
WEST, O. O., Jr.....	136	WOODFORD, H. J.....	813
WEST, W. E.....	883	WOODING & PURYEAR.....	902
WESTERN UNION STABLE...	612	WOODWARD, J. R.....	485
WESTMONT STABLE.....	68	WORK, GEO.....	150
WESTON, A. G.....	549	WORLEY, A.....	70
WHALEN, W.....	545	WRENWOOD STABLE...	1082
WHALEN, J. W.....	1023	WRIGHT, CH.....	315
WHALEN, F.....	1042	WRIGHT, W. T.....	867
WHEELER & FAIRES.....	716	WYNNE & SONS.....	1019
WHITE, J.....	808	WYNNE, W.....	433
WHITE, J. & Co.....	106	YEHLE, L.....	843
WHITELEY, J. H. & Co... ..	62	YETTER, PENN.....	540
WHITTAKER & BARRY.....	280	YORE, L. J.....	592
WHITTEN BROS.....	927	YOUNG, M.....	321
WILEY, ED.....	360	YOUNGER, D. D.....	786
		ZBOROWSKI, E.....	727
		ZIEGLER, M.....	1052

BOND, R.
 BOYLE, C.
 BURGESS, F.
 CAMPBELL,
 CAMPBELL,
 CARSON, W.
 CLARK, A.
 CLINCH, P.
 COOHLIN, I.
 CRAIK, H.
 CRAIK, R.
 CROFT, A.
 DAWES, J. I.
 DEWERS, J.
 DOANE, J.
 DONALDSON
 DRYSDALE
 ELLIOTT, J.
 ERWIN, J.
 FINNIE, C.
 FORBES, C.
 GATES, A.
 GILBERT,
 GORMAN,
 HARRIS, J.

CANADA.

I, B. E.	173	HAYDEN, G. L.	1119
J.	350	HENDERSON, JNO.	1140
J. T.	104	HENDERSON, WM.	1147
S.	1004	HENDRIE, WM.	1107
N, W. H.	179	HUESTON, R.	1145
YER, J.	35	KARNEY, J. ALEX.	1151, 1152
D.	223	LACHINE STABLE.	1120
BOBT.	566	LOUDEN, A.	1140
....	1007	MAJOR, E. J.	1137
D. F.	517	MALOCHÉ, S.	1095
D. D.	2	MCGEE, H.	1141
GEO. W.	845	MINOGUE, JAS.	1158
C.	516	MINOGUE, M.	1157
J. M.	878	MINOGUE, R.	1142
OYER.	926	MORTON, OSBORNE.	1101
D, B.	460	MURPHY, JNO., JR.	1150
D, F. M.	959	OWENS, W. E.	1094, 1097, 1099
D, H. J.	813	PENNISTON, C. H.	1126
& PURYEAR.	902	PENNISTON, F. H.	1124
D, J. R.	485	PENNISTON, J. E.	1125
CO.	150	PHAIR & HIGGINS.	1149
A.	70	PHELAN, T. P.	1129
D STABLE.	1082	PYTCHLEY STABLE.	1113, 1114
CH.	315	RED BANK STABLE.	1109
W T.	867	RICKETTS, T.	1131
SONS.	1019		
V.	483		
....	843		
PENN.	540		
....	592		
....	321		
D. D.	786		
I, E.	727		
M.	1052		
BOND, R.	1090, 1098		
BOYLE, C.	1091		
BURGESS, E.	1123		
CAMPBELL, D. W.	1154		
CAMPBELL, F. A.	1115		
CARSON, WM.	1089		
CLARK, ALTON F.	1108		
CLINCH, P.	1128		
COGHLIN, B. J.	1127		
CRAIK, H. S.	1121		
CRAIK, R., DR.	1090		
CROFT, A. W.	1133		
DAWS, J. P.	1116		
DEWERS, L.	1144		
DOANE, J.	1110		
DONALDSON, J. A.	1105		
DRYSDALE, H.	1146		
ELLIOTT, F. K.	1112		
ERWIN, JAS.	1118		
FINNIE, CHAS.	1106		
FORBES, G.	1100		
GATES, A.	1155		
GILBERT, G. H.	1143		
GORMAN, M.	1111		
HARRIS, J.	1123		

ROCKAWAY STABLE.....	1102	STEVENSON, J. ALEX.....	1138
SEGRAM, J. E.....	1093	STRATHY, J. ALEX. L.....	1104
SEWELL, C., Dr.....	1184	WAVERLY STABLE.....	1130, 1156
SHATFORD, J. D.....	1132	WHITE, J. K.....	1136
SHIELDS, ALEX.....	1135	WILSON, R.....	1148
SMITH, A.....	1092	WISEMAN, JNO.....	1117
SMITH, JNO.....	1103	WOODWARD, J. R.....	1153

ADDENDA.

HASCALL, L. A.....	Black, Black and Yellow Striped Sleeves and Cap
KAMMERER, F. C.....	Cherry, White Cap
O'BRIEN, D.....	Green, Old Gold Sash, Red Cap
STEELE, BRICE.....	Black, Orange Sleeves, Orange and Black Cap
THOMAS, W. R.....	White, Blue Cap

SU
 GOODW
 PER S
 Limit by Draft,

J. ALEX.....1138
 ALEX. L.....1104
 TABLE....1130, 1156
 K.....1136
1148
 JNO.....1117
 , J. R.....1153

SUBSCRIPTION TERMS

GOODWIN'S OFFICIAL TURF GUIDE.

Parties desiring to subscribe can cut out, and fill in the annexed blank.

PER SEASON, { Which includes all Semi-Monthly numbers issued during the season, and a *best bound Annual* at end of year. } \$7.00.

Postage prepaid in the U. S. and Canada.
 Remit by Draft, Check, Money Order, or Registered Letter to,
GOODWIN BROS.,
 241 BROADWAY, N. Y.

Striped Sleeves and Cap
 .. Cherry, White Cap
 Gold Sash, Red Cap
 Orange and Black Cap
 White, Blue Cap

Enclosed find \$_____ for _____
 Subscriptions to your Official Turf Guide for
 188_____, which please send to

Name _____
 Address _____

GOODWIN BROS.,
 241 BROADWAY, NEW YORK.

188_____

GOODWIN'S OFFICIAL TURF GUIDE

CAN BE PURCHASED IN

Baltimore, Md.	At	Barnum's Hotel.
Boston, Mass.	"	Reber & Gallagher, 15 Spring Lane.
Cincinnati, O.	"	Hawley's News Depot, Vine Street.
Chicago, Ill.	"	The Horseman, 182 State Street.
"	"	McDonald & Co., 55 Washington Street.
"	"	Palmer House News Stand.
"	"	Brenano, 101 State Street.
"	"	A. G. Spalding & Bros., 108 Madison Street.
Detroit, Mich.	"	Gilman & Barnes, 12 Cardiac Square.
Kansas City, Mo.	"	J. A. Frame & Co., 511 Delaware Street.
"	"	Wolf & Ormsby, 822 Delaware Street.
"	"	J. G. Moulton & Co., 104 W. 9th Street.
"	"	Live Stock Record & Farmer Office.
Lexington, Ky.	"	Live Stock Record Office.
Los Angeles, Cal.	"	Schwartz & Co., Cor. Requena & Main Sts.
Louisville, Ky.	"	Ch. T. Dearing, Cor. 3d and Jefferson Streets.
Memphis, Tenn.	"	R. M. Mansford, (Stationer).
Minneapolis, Minn.	"	Minneapolis Turf Exchange.
"	"	North Western Turf Ex., 31 Washington Ave.
Montreal, (Canada)	"	Dawson Bros.
Nashville, Tenn.	"	Duckworth & Co., 184 Church Street.
New Orleans, La.	"	Geo. F. Wharton, 5 Carondelet Street.
Pittsburgh, Pa.	"	R. S. Davis & Co., 96 Fifth Ave.
Philadelphia, Pa.	"	J. R. Hathaway, S. E. Cor. 11th & Chestnut Sts.
San Francisco, Cal.	"	Schwartz & Co., 411½ California Street.
"	"	J. K. Cooper, 740 Market Street.
"	"	J. C. Scott, 22 3d Street.
Saratoga, N. Y.	"	B. Brunner, Arcade News Depot.
St. Louis, Mo.	"	P. Roeder, 322 Olive Street.
"	"	Roche's Turf Exchange.
St. Paul, Minn.	"	Minnesota News Co., 16 W. 3d Street.
"	"	Shaw, Hannigan & Co., 307 Robert Street.
Troy, N. Y.	"	Northern News Co.
Washington, D. C.	"	Jones & Co., (Turf Exchange), Harris House.
"	"	National Hotel News Stand.
"	"	Polkinhorn's News Depot, adjoining Post Office.
"	"	Maheny & Co., 1311 E Street.

**PARIS (FRANCE), BRENTANO, 15 BOULEVARD ST. MARTIN
IN NEW YORK AT**

ASTOR HOUSE, GILSEY, BRUNSWICK, HOFFMAN, ST. JAMES,
MURRAY, HILL, COLEMAN, BRENTANO'S 15 Union Square,
Etc., Etc., all principal News Stands, Race Tracks, and
Publishers' Office.

241 Broadway, Rooms 5 and 6, New York.

S
GUIDE

and.
Street.
Street.

ison Street.
Square.
Street.
Street.
Office.

Main Sta.
Person Streets.

Washington Ave.

Street.
Street.

& Chestnut Sts.
ia Street.

ot.

Street.
bert Street.

Harris House.

oining Post Office.

D ST. MARTIN

AN. ST. JAMES.
Union Square,
Tracks, and

New York.



Established 1795.

A. R. Van Nest & Co.

FINE

HORSE GOODS,

COMPRISING

Racing Goods,

JOCKEY'S COLORS, BREECHES,
AND BOOTS.

Coolers and Linsey Woolseys made in
Stable Colors to order.

**Saddles, Bridles,
Whips, Spurs.**

HARNESS

Of Every Description.

Sole Agents for all English Preparations.
Also for MCKERRON'S
CALIFORNIA RACING BOOTS.

**120 CHAMBERS ST.,
AND
50 WARREN ST.
NEW YORK.**

Delury



HEADQUARTERS FOR

RACING COLOURS
AND
RIDING BREECHES.

6TH AVENUE, BET. 14TH & 15TH STS.

**RACING COLOURS
AND
RIDING BREECHEES.**



STs.

