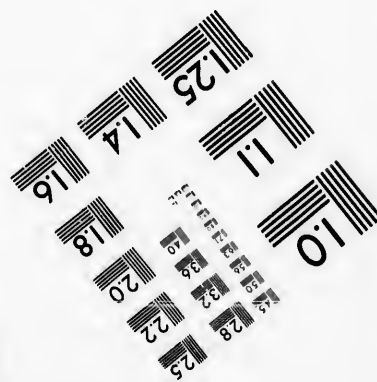
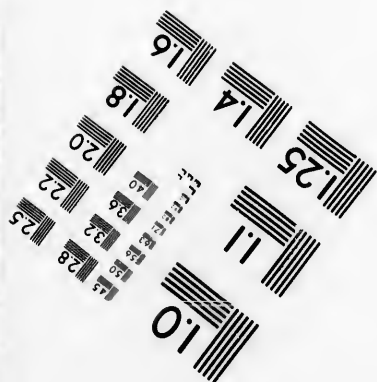
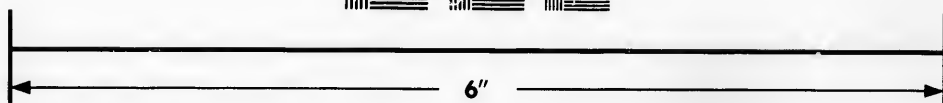
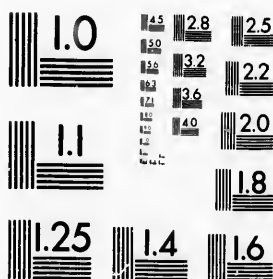


**IMAGE EVALUATION
TEST TARGET (MT-3)**



**Photographic
Sciences
Corporation**

23 WEST MAIN STREET
WEBSTER, N.Y. 14580
(716) 872-4503

**CIHM
Microfiche
Series
(Monographs)**

**ICMH
Collection de
microfiches
(monographies)**



Canadian Institute for Historical Microreproductions / Institut canadien de microreproductions historiques

© 1992

Technical and Bibliographic Notes / Notes techniques et bibliographiques

The Institute has attempted to obtain the best original copy available for filming. Features of this copy which may be bibliographically unique, which may alter any of the images in the reproduction, or which may significantly change the usual method of filming, are checked below.

L'Institut a microfilmé le meilleur exemplaire qu'il lui a été possible de se procurer. Les détails de cet exemplaire qui sont peut-être uniques du point de vue bibliographique, qui peuvent modifier une image reproduite, ou qui peuvent exiger une modification dans la méthode normale de filmage sont indiqués ci-dessous.

- Coloured covers/
Couverture de couleur
- Covers damaged/
Couverture endommagée
- Covers restored and/or laminated/
Couverture restaurée et/ou pelliculée
- Cover title missing/
Le titre de couverture manque
- Coloured maps/
Cartes géographiques en couleur
- Coloured ink (i.e. other than blue or black)/
Encre de couleur (i.e. autre que bleue ou noire)
- Coloured plates and/or illustrations/
Planches et/ou illustrations en couleur
- Bound with other material/
Relié avec d'autres documents
- Tight binding may cause shadows or distortion
along interior margin/
La reliure serrée peut causer de l'ombre ou de la
distorsion le long de la marge intérieure
- Blank leaves added during restoration may appear
within the text. Whenever possible, these have
been omitted from filming/
Il se peut que certaines pages blanches ajoutées
lors d'une restauration apparaissent dans le texte,
mais, lorsque cela était possible, ces pages n'ont
pas été filmées.

- Coloured pages/
Pages de couleur
 - Pages damaged/
Pages endommagées
 - Pages restored and/or laminated/
Pages restaurées et/ou pelliculées
 - Pages discoloured, stained or foxed/
Pages décolorées, tachetées ou piquées
 - Pages detached/
Pages détachées
 - Showthrough/
Transparence
 - Quality of print varies/
Qualité inégale de l'impression
 - Continuous pagination/
Pagination continue
 - Includes index(es)/
Comprend un (des) index
- Title on header taken from: /
Le titre de l'en-tête provient:
- Title page of issue/
Page de titre de la livraison
 - Caption of issue/
Titre de départ de la livraison
 - Masthead/
Générique (périodiques) de la livraison

Additional comments: /
Commentaires supplémentaires:

There are some creases in the middle of the pages.

This item is filmed at the reduction ratio checked below /
Ce document est filmé au taux de réduction indiqué ci-dessous.

10X	12X	14X	16X	18X	20X	22X	24X	26X	28X	30X	32X
									✓		

The copy filmed here has been reproduced thanks to the generosity of:

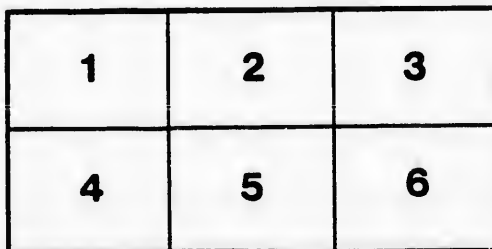
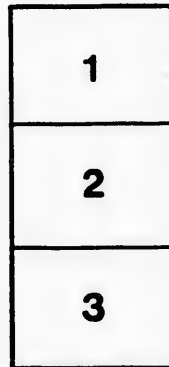
Manuscript Division,
National Archives of Canada

The images appearing here are the best quality possible considering the condition and legibility of the original copy and in keeping with the filming contract specifications.

Original copies in printed paper covers are filmed beginning with the front cover and ending on the last page with a printed or illustrated impression, or the back cover when appropriate. All other original copies are filmed beginning on the first page with a printed or illustrated impression, and ending on the last page with a printed or illustrated impression.

The last recorded frame on each microfiche shall contain the symbol \rightarrow (meaning "CONTINUED"), or the symbol ∇ (meaning "END"), whichever applies.

Maps, plates, charts, etc., may be filmed at different reduction ratios. Those too large to be entirely included in one exposure are filmed beginning in the upper left hand corner, left to right and top to bottom, as many frames as required. The following diagrams illustrate the method:



L'exemplaire filmé fut reproduit grâce à la générosité de:

Division des manuscrits,
Archives nationales du Canada

Les images suivantes ont été reproduites avec le plus grand soin, compte tenu de la condition et de la netteté de l'exemplaire filmé, et en conformité avec les conditions du contrat de filmage.

Les exemplaires originaux dont la couverture en papier est imprimée sont filmés en commençant par le premier plat et en terminant soit par la dernière page qui comporte une empreinte d'impression ou d'illustration, soit par le second plat, selon le cas. Tous les autres exemplaires originaux sont filmés en commençant par la première page qui comporte une empreinte d'impression ou d'illustration et en terminant par la dernière page qui comporte une telle empreinte.

Un des symboles suivants apparaîtra sur la dernière image de chaque microfiche, selon le cas: le symbole \rightarrow signifie "A SUIVRE", le symbole ∇ signifie "FIN".

Les cartes, planches, tableaux, etc., peuvent être filmés à des taux de réduction différents. Lorsque le document est trop grand pour être reproduit en un seul cliché, il est filmé à partir de l'angle supérieur gauche, de gauche à droite, et de haut en bas, en prenant le nombre d'images nécessaire. Les diagrammes suivants illustrent la méthode.

qu'il
cet
de vue

ge
ation
ués



32 X

TABLE OF DUTIES TO BE COLLECTED, FROM

ARTICLES.	DUTIES TO BE COLLECTED UNDER		REMARKS.
	Imperial Act 5 & 6 Vict. ch. 49.	Provincial Act 4 & 5 Vict. ch. 11.	
ARMS AND AMMUNITION, and Utensils of War, ASSES,	Free.	Free, see cattle and live stock.	Prohibited.
BARLEY,	Free, see grain.	Free.	} If the fresh Vegetable, liable to the Provincial Duty of 5 per cent.—See Vegetables, fresh.
BEANS,	Free, see grain.	Free.	
BEEF, } Salted, } } Fresh, } BISCUIT or BREAD,	3s. per cwt. see meat, salted. Free, see meat, fresh. Free.	Free. Free. Free.	
BLUBBER, the produce of Fish and Creatures living in the Sea of Foreign Fishing,	15 per cent.	5 per cent.	PORK, ... POTATOE PROVISION ty's L
BOOKS, such as are prohibited to be imported into the United Kingdom,			Prohibited.
BULLION,	Free.	5 per cent.	RESINS, S RICE, RUM, ...
BUTTER,	8s. per cwt.	5 per cent.	
CANDLES, other than Spermaceti,	7 per cent.	5 per cent.	SALT, ...
CARRIAGES, of Travellers,	Free.		SALT, impo SEEDS, ...
CATTLE, Neat, and other than Live Stock,	Free.	Free.	SETTLERS
CHEESE,	5s. per cwt.	5 per cent.	SILK, Manu SKINS, See SOAP, SPERMACE
CLOCKS AND WATCHES,	7 per cent.	5 per cent.	
COCOA,	1s. per cwt.	5 per cent.	SPIRITS AN
COIN,	Free.	Free, not being merchandize.	
COIN, Base or Counterfeit,			Prohibited.
COFFEE, } Green, } Ground, } Roasted,	5s. per cwt. 5s. per cwt. 5s. per cwt.	2d. per lb. 4d. per lb. 5 per cent.	STORES AN STRAW, ... SUGAR, Re Count SUGAR, Un SYRUPS, ...
CORDAGE,	7 per cent.	5 per cent.	
CORKS,	7 per cent.	5 per cent.	TEA, unles ported the Bri
CORN, AND GRAIN, Unground,	Free.	Free, see grain of all kinds.	
COTTON, Manufactures,	7 per cent.	5 per cent.	TOBACCO, TALLOW, TOW, ... TORTOISE
COTTON, Wool,	Free.	5 per cent.	
DIAMONDS,	Free.	5 per cent.	VEGETABI
DRUGS,	Free.	5 per cent.	
FINS AND SKINS, the produce of Creatures living in the Sea of Foreign taking,	15 per cent.	5 per cent.	WHEAT, ... WINE, whet
FISH, Fresh,	Free.	Free.	
FISH, of Foreign taking or curing, } Dried or Salted, } Pickled,	2s. per cwt. 4s. per barrel.	Free. Free.	WOOD AND WOOLLEN, ALL OTHE under
FLAX,	Free.	5 per cent.	
FLOUR, except Wheat Flour,	Free.	Free.	N. B.— by adding 10
FLOUR, Wheat,	2s. per barrel, of 196lb.	Free.	
FRUIT, Fresh,	Free.	5 per cent.	The P The D
GLASS, Manufactures,	15 per cent.	5 per cent.	See Corn and Grain.
GRAIN, Unground,	Free.	Of all kinds free.	
GUMS AND RESINS,	Free.	5 per cent.	Prohibited.
GUN POWDER,			
HARDWARE,	7 per cent.	5 per cent.	See Wood and Lumber.
HAY AND STRAW,	Free.	5 per cent.	
HEMP,	Free.	5 per cent.	Except Beef and Pork fresh or salted, which are free of the Provincial Duty of 5 per cent.
HIDES, Raw,	Free.	5 per cent.	
HOGS,	Free, see live stock.	Free.	INDIAN CORN, ... LEATHER, Manufactures, LINEN, Manufactures, LIVE STOCK, LUMBER AND WOOD, MANURES, of all kinds, MEAL or FLOUR, except Wheat Flour, MEAT, } Fresh, } Salted, } Cured, MOLASSES, MULES, OAKUM, OIL, the produce of Fish and Creatures living in the Sea of Foreign Fishing, PACKAGES, containing Dutiable articles, PAPER, Manufactures,
HORSES,	Free.	Free.	
HERRINGS, taken and cured by the Inhabitants of the Isle of Man and imported from thence,	Free.	5 per cent.	
INDIAN CORN,	Free, see corn and grain.	Free.	
LEATHER, Manufactures,	7 per cent.	5 per cent.	
LINEN, Manufactures,	7 per cent.	5 per cent.	
LIVE STOCK,	Free.	Free.	
LUMBER AND WOOD,	Free.	5 per cent.	
MANURES, of all kinds,	Free.	5 per cent.	
MEAL or FLOUR, except Wheat Flour,	Free.	Free, see flour.	
MEAT, } Fresh, } Salted, } Cured,	3s. per cwt. 3s. per cwt. 3s. per cwt.	5 per cent. 5 per cent. 5 per cent.	
MOLASSES,	3s. per cwt.	1s. 6d. per cwt.	
MULES,	Free.	Free, see live stock.	
OAKUM,	7 per cent.	5 per cent.	
OIL, the produce of Fish and Creatures living in the Sea of Foreign Fishing,	15 per cent.	Fish, free.	
PACKAGES, containing Dutiable articles,	Included in the difference of value at the Ports of Exportation and Importation.	Free.	
PAPER, Manufactures,	7 per cent.	5 per cent.	

COLLECTED, FROM AND AFTER 5th JULY, 1843.

REMARKS.	ARTICLES.	DUTIES TO BE COLLECTED UNDER		REMARKS.
		Imperial Act 5 & 6 Vict. ch. 49.	Provincial Act, 4 & 5 Vict. ch. 14.	
	PEAS,.....	Free, see grain.	Free.	} If the Fresh Vegetable, liable to the Provincial Duty of 5 per cent.—See Vegetables, fresh.
Vegetable, liable to the Duty of 5 per cent.—See fresh.	PORK,.....	Free, see meat, fresh.	Free.	
		{ Fresh,.....	3s. per cwt., see meat, salted.	Free.
	{ Salted,.....	Free, see vegetables, fresh.	Free.	
	POTATOES,.....	Free.	Free, see 9th section of the Act.	
	PROVISIONS AND STORES, for the use of Her Majesty's Land and Sea Forces,.....	Free.	Free, see 9th section of the Act.	
	RESINS, See Gums and Resins,.....	Free.	5 per cent.	} *See 10th Section of Imperial Act. †For excess over proof, &c.—See Schedule Provincial Act.
	RICE,.....	*1s. per gallon.	†6d. per gallon.	
	RUM,.....	Free.	2s. 6d. per barrel of 250lb.	
	SALT,.....	Free.	1s. per ton.	
	SALT, imported by Sea,.....	4 per cent.	Free.	
	SEEDS,.....	According to the description of the Articles.	Household &c., free, see 11th section of the Act.	} .
	SETTLERS' GOODS,.....	15 per cent.	5 per cent.	
	SILK, Manufactures,.....	7 per cent.	5 per cent.	
	SKINS, See Furs and Skins,.....	15 per cent.	5 per cent.	
	SOAP,.....	7 per cent.	5 per cent.	
	SPERMACELE,.....	15 per cent.	5 per cent.	
	SPIRITS AND CORDIALS, except Rum,.....	*1s. 6d. per gallon.	†Not sweetened 6d. per gallon. Sweetened, 1s. 7d. per gallon.	} *See 10th Section of Imperial Act. †For excess over proof, &c.—See Schedule of Provincial Act. See Provisions and Stores. See Hay and Straw.
	STORES AND PROVISIONS, for Her Majesty's Forces.	Free.	Free.	
	STRAW,.....	Free.	5 per cent.	
	SUGAR, Refined, the produce of, and refined in Foreign Countries,.....	20 per cent.	2d. per lb.	
	SUGAR, Unrefined,.....	5s. per cwt.	1d. per lb.	
	SYRUPS,.....	4 per cent.	1s. 6d. per cwt.	
	TEA, unless imported direct from China, or unless imported from the United Kingdom, or from any of the British Possessions,.....	1d. per lb.	3d. per lb.	
	TOBACCO,.....	7 per cent.	2d. per lb.	
	{ Manufactured,.....	4 per cent.	1d. per lb.	
	{ Unmanufactured,.....	Free.	5 per cent.	
	TALLOW,.....	Free.	5 per cent.	
	TOW,.....	Free.	5 per cent.	
	TORTOISE SHELL,.....	Free.	5 per cent.	
	VEGETABLES, Fresh,.....	Free.	5 per cent.	
	WHEAT,.....	Free, see grain.	Free.	
Grain.	WINE, whether bottled or not,.....	7 per cent.	1s. per gallon.	
	{ Madeira,.....	7 per cent.	6d. per gallon.	
	{ Other Wines,.....	Free.	5 per cent.	
	WOOD AND LUMBER,.....	Free.	5 per cent.	
	WOOLLEN, Manufactures,.....	7 per cent.	5 per cent.	
	ALL OTHER ARTICLES, not enumerated, or included under any of the foregoing heads,.....	4 per cent.	5 per cent.	

N. B.—The Imperial ad valorem Duties are calculated on the value at the Port of Entry, which value is generally to be ascertained by adding 10 per cent to the Invoice Price.

The Provincial ad valorem Duties are to be calculated on the first cost.

The Duties imposed under both Acts (Imperial and Provincial) are to be collected, the one in addition to the other.

Lumber.

and Pork fresh or salted, 5 per cent of the Provincial Duty.

