

THE COMMERCIAL

FINANCE AND INSURANCE REPORT

Subscription, \$2.00 per Annum in Advance.

Established 1852

Published Weekly.

No. 20

WINNIPEG, CANADA, MARCH 22, 1902

No. 29

Jubilee Brand Building Paper

PAYS us to make the Best Building Paper.

PAYS the dealer to sell it.

PAYS the carpenter to use it.

PAYS the owner to have it.

and business from end to end.

HERRICK, ANDERSON & CO.

WINNIPEG.

Selling Agents Man. Building Paper Co.

FLOUR

HIGHEST AWARDS at home and abroad:
WINNIPEG EXPOSITION
PARIS EXPOSITION.

Hudson's Bay Company



The flour manufactured by the Hudson's Bay Company has received the highest Prize at the Paris Exposition and highest awards at the Winnipeg International Exhibition. All the flour made by the Company is from specially selected wheat.

Hudson's Bay Co's



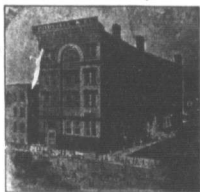
TENTS, FLAGS AND
ROLLER AWNINGS

**THE EMERSON-HAGUE
MANUFACTURING CO. Ltd.**

WINNIPEG.

CODVILLE & CO.

Wholesale Grocers.



—Packers of—

CELEBRATED GOLD STANDARD TEA
Coffee, Baking Powder and Spices.

BANNATYNE AVE. E. WINNIPEG.

Branches: BRANTON and CALGARY.

BROMLEY & CO.



Tents
Awnings and
Mattress
Factory

Cor. Princess and Alexander St., Winnipeg

HEADQUARTERS FOR THE FOLLOWING:

Pipes, Buttons, Playing Cards, Mouth Organs, Perfumes, Collar Buttons and Cuff Buttons, Rings and Gents' Chains, and complete stock of Smallwares. Wholesale only.

J. McLEOD HOLIDAY

173 McDermott St. Winnipeg

Thomas Ryan & Co. Ltd.

We are carrying an immense stock of

BOOTS AND SHOES

For the Spring and Summer trade. Our motto is good stock and close prices. Orders respectfully solicited.

THOMAS RYAN & CO. Ltd.

King and Bannockburn Sts., Winnipeg

Granby Rubbers

Enjoy the best reputation for good wear.

It stretches from ocean to ocean.

The quality is maintained by using PURE RUBBER in their manufacture.

Our travellers are on the road for fall 1902

Immediate orders filled same day as received.

THE AMES HOLDEN CO. Ltd.

BOOTS AND SHOES.
GRANBY RUBBERS.

WINNIPEG.

Send for New Granby Catalogue.

F
R
U
I
T
S



P
R
O
D
U
C
E

We have just received a shipment of

Leno Silk Mousseline

in all the newest as well as the most staple shades. This is a beautiful cloth, with the lace stripe effect, so much asked for at present—the daintiest thing in the market for Ladies' Waists.

Send for Samples or, better still, a few Blouse lengths, they will sell at sight.

Our Travellers are now out with samples of Fall Underwear, Blankets, Flannels, etc. In the meantime send us your letter orders for your immediate wants. They will receive prompt and careful attention.

The Gault Bros. Co. Ltd.

IMPORTERS and
MANUFACTURERS

WINNIPEG

Men's Furnishings

THIS DEPARTMENT occupies the greater part of the Fourth Floor, and is fully stocked with everything in the Furnishing Line.

Club Sweaters

For Men and Boys from \$7.00 to \$15. Boy's Sweaters are very popular and sell rapidly. Prices from \$4.00 up.

Try a couple Dozen and see how they'll go.

Regatta Shirts

In all the latest Spring and Summer Styles and Patterns.

Top Shirts

Our already famous



Brand of shirts is meeting with exceptional success. They are made in our own Factory from selected materials, and are well made and well fashioned in every particular.

We carry a full range in all sizes in Flannelette, Silk Stripes, Ceylon Flannel, Shirtings, Galasas, Denims (Blue Black and Grey), Stripe and Spot Drill, Moleskins, Black and Stripe Sateens, White Duck, and Cream Honeycomb.

You will do yourself and us a favor if you see and inquire about them.

R. J. Whitla & Co.

LIMITED

IMPORTERS AND MANUFACTURERS

WINNIPEG.

BAGS FOR BLUESTONE

Our EXTRA HEAVY FIBRE BAGS are just the thing for this and sugar. All sizes from 1 to 35 lbs. Nail Boxes, 3, 5, 7 and 10 lbs. K. BAGS, light and heavy, all sizes. HAT, SHIRT and MILLINERY BAGS.

McALLISTER & WATTS

43 Roria St., Winnipeg.
East of Post Office.



Cor. Portage Ave. and Fort St.

PREPARE

For the active duties of a business life by taking a course at the Winnipeg Business College. Annual catalogue sent free to any address.

G. W. DONALD, Secretary.

CHEESE



OUR car of Brockville Cheese advertised in this paper February 1st are all cleared out and we are pleased to know that our customers were so well satisfied with the quality of the goods.

We have now in transit from St. Thomas, Ontario, another selected car of finest September Colored Cheese, due to arrive here about 1st April. Merchants will do well to book their orders early, as stocks are very limited.

J. Y. GRIFFIN & CO. WHOLESALE COMMISSION MERCHANTS AND PORK PACKERS
WINNIPEG

EGGS CANNOT BE MOVED

At existing prices. Jobbers are to-day offering them at 13c to 14c, but at these figures they are not wanted other than in a small way. Would advise our shippers not to pay more than 10c for them, country points.

Neither Can Fresh Made Butter

For there is, comparatively speaking none to move, We are making sales for shippers' account at from 18c to 21c. When you have a box to spare mark it up to

R. A. ROGERS & COMPANY Ltd.

March 13, 1902.

WINNIPEG

G. F. STEPHENS & CO.

Limited.

IMPORTERS, MANUFACTURERS AND JOBBERS

Paints, Oils, Varnishes, Brushes

AND ALL PAINTERS' REQUISITES

PLATE AND WINDOW GLASS

Largest stock in Western Canada.

Orders receive careful attention and prompt shipment.

174-176 Market Street

Winnipeg

Train a Mile Long.

A train of cars exactly one mile in length is being hauled over the Thunder Bay and Wabigoon sections of the C. P. R. There are 165 cars in the train. Situated next to the engine is a coaling car. This train is being sent over the road to ascertain exactly the tonnage that can be handled on the various grades between the lake and the leveler sections of the crans. When this knowledge has been gained plans will be prepared to lower the grades where found necessary, and generally to improve the road to allow of the haulage of the maximum tonnage both directions. A portion of the \$2,000,000 appropriated for improving this section of the road will be applied to this work. It has been stated that the intention of the C. P. R. company is to lengthen all sidings between Winnipeg and the lake to one mile. This course, we are in a position to state, has not been definitely decided upon. A great many of the sidings are situated on comparatively heavy grades, and heavily loaded trains are moved with considerable difficulty into and out of such sidings. The engineering staff has this question under consideration also. They are considering the best method of overcoming the difficulty spoken of. Possibly the grades may be lowered sufficient to permit of the use of mile-long sidings, or half-mile sidings may be put in on each side of the grade. The whole plan for the contemplated betterment is not being worked out in the Montreal offices. When completed work will be commenced and a very large force of men will be employed all summer on the Winnipeg-Port Arthur sections—*Port Arthur Chronicle*.

Railway and Traffic Matters.

The Canadian Soo ship canal was expected to be in readiness for the passage of vessels by to-day.

The opening of navigation on the upper great lakes will be earlier this season than has ever been known if present prospects are realized. Ships will be plying between Duluth and Lake Erie ports by April 1. The usual date is a month later. An opening of navigation thirty days ahead of its usual time means an addition to the capacity of the lake fleet amounting to at least 15 per cent.

One of the most important freight matters, from a northwestern standpoint, this season, has just concluded its session at Chicago. At this meeting lake and rail rates on export and domestic flour and products consisting thereto were determined upon. The flour rate was cut three cents from its tariff in effect when the season of 1901 opened. This season the lake and rail rate on domestic flour will be 22 cents to the seaboard and 10½ cents on its export business. These rates are three cents under the agreed all rail rate, the recognized differential allowed to lake carriers. These new tariffs will take effect on April 1.

The Canadian Northern put into effect on the 10th inst. the following soft wood lumber rates: From Port Arthur, 15c; Rainy River 9c, to Winnipeg; from Port Arthur 17c; Rainy River 11c, to Portage la Prairie and Carman; from Port Arthur 16c; Rainy River 10c, to Gladstone; from Port Arthur 20c; Rainy River 17c, to Daughlin; from Port Arthur 21c; Rainy River 15c, to Brandon and Hartney. These rates are per 100 pounds. One point in proportion. These rates show a reduction of one cent per 100 pounds from the rates in effect by the Canadian Pacific from Port Arthur, to Portage and Keweenaw.

The first section of last Saturday's C. P. R. express from the east brought in 95 immigrants, who had various parts of the west as their destination. There were 25 more settlers on the second section, and altogether there were 25 cars of effects, with a man in charge of each, making a total of 109 settlers on the two trains. The same train had 110 immigrants on board, whose nationalities were: English 21, Swedish 33, Norwegian 33, and German 20. The Dominion immigration commissioner received advice this week to the effect that 130 arrivals from the Dominion had left Halifax for Winnipeg of the number 114 are British and 14 foreigners.

The W. H. Malkin Co.
LIMITED.

Importers and Wholesale Grocers

Packers of the Celebrated VICTORIA CROSS Evaporated Fruits, Teas and Coffees.

HEADQUARTERS for Sage, Tapioca, Rice and all classes of English Groceries.

Prompt attention to all letter orders.

137 Water St., VANCOUVER, B.C.

THE COMMERCIAL

The recognized authority on all matters pertaining to trade and progress in western Canada, including that part of Ontario west of Lake Superior, the province of Manitoba and the Territories.

Twentieth Year of Publication.

ISSUED EVERY SATURDAY.
Subscriptions—Canada and the United States, \$1.00 per annum in advance, or 50c per month; other countries 1.50 in advance.

Changes for advertisements or stops should be in not later than Thursday morning.

Advertisements purporting to be news matter, or which profess to express the opinion of this Journal, will not be inserted.

The Commercial certainly enjoys a very much larger circulation among the business community of the vast region lying between Lake Superior and the Pacific coast, than any other paper in Canada, daily or weekly. The Commercial also reaches the leading wholesale, commission and manufacturing and financial houses of Eastern Canada.

Office 219 McDermott St. Telephone 234

D. W. BUCHANAN,

Publisher.

WINNIPEG, MARCH 22, 1902

TO OUR ADVERTISERS.

Friday next (Good Friday) being a public holiday there will be no printing done on this paper that day, which necessitates the work on some parts of the ads for one day earlier than usual. Advertisers desiring changes in their advertisements should have their copy in this office not later than Wednesday noon.

RUSHING WHEAT TO MARKET.

We have heard a great deal of late about the loss occasioned by farmers about Manitoba by the inability of the railway companies to haul all the grain out as fast as it could be marketed. It might be worth while considering to the farmers on account of wheat of the throwing of large quantities of wheat on the market within a brief period. United States papers claim that the Manitoba crop has been the strongest bear element in depressing prices this season. The crop was said to be in the elevators and appearing in the visible supply, thereby depressing values. While we hear a great deal of complaint here on account of the lack of elevator and transportation facilities, millers and grain shippers south of the boundary are worrying over the depressing influence of the Manitoba crop. While United States millers and exporters were holding prices up, the Manitoba crop, or such portion of it as could be shipped out, was pushed forward into consuming markets at a price which brought purchasers. Our wheat was sold for export at a price relatively lower than Duluth and Minneapolis grades. Its cheapness brought a demand for the Manitoba grain in preference to similar grades of Duluth and Minneapolis wheat.

The grain and milling trade south of the boundary is now greatly perplexed over the Manitoba wheat problem. How to counteract competition from the Canadian grain is being seriously considered. The only plan they propose to overcome the competition, is to have the Manitoba and United States crops marketed and shipped to market as one crop. In order to accomplish this result, the United States buyers on wheat would have to be persuaded. Manitoba wheat could then be shipped to the United States for millage or for storage the same as the United States crop. This, they think, would differ the price of Manitoba wheat and place it on a par as to value with United States grain. This pre-

venting the depression of the markets by the offering of Manitoba wheat at lower prices than similar Duluth and Minneapolis grades.

If the farmers will persist in throwing all their wheat onto the market at the earliest possible moment, it is bound to have a very depressing influence on prices. This was not so noticeable when the crop was smaller, but now that it is beginning to assume the large proportions, the depressing influence is much greater. If the farmers would provide storage on the farm and market the grain in a smaller stream, spreading the marketing over a longer period, the depressing influence of the crop would not be as keenly felt. If the Manitoba crop had been all marketed before the close of navigation last fall, the price would probably have been depressed two or three or possibly as much as five cents per bushel below the price which was obtained. Those who figure up so glibly the alleged millions of dollars which the Manitoba farmers have lost through being obliged to hold over their wheat on account of lack of transportation facilities and storage space, might just call a halt long

Manitoba and the Canadian northwest are filling up and developing their wheat land with great rapidity. No one is prepared to say when this country will produce 100,000,000 bushels of wheat, but it will not be long hence. The 100,000,000 bushels will then be dumped on the English or continental markets within six months, the same amount as the 50,000,000 are now, for want of granaries on the farms or elevators in the town to store it. It will be gotten rid of quickly as threshed. The effect on trade is obvious. Millers and elevator men see only one way out of this serious dilemma. That way, suggests our flour-trade contemporary, is the removal of the United States duty levied on this wheat. This action would bring this vast volume of wheat under the influence of the United States market system, which is distinctly a bull and not a bear, influence. The grain could come to our mills for storage in their elevators and for grinding, and it would be collected in our grain elevators for storage until it should go into consumption naturally, along with United States grain, and the effect of this system of handling would be beneficial alike to the Canadian and United States grain. Milling in bond would not accomplish the same results.

MUTUAL LIFE OF CANADA.

The attention of readers is directed to the annual report of the Mutual Life of Canada, a careful perusal of which will reveal an excellent year's

in pointing out these features, dwell especially upon the fact that, notwithstanding the large turn of events of the year, the expenses were \$25,000 less than in 1900, being only 16 per cent of the total income. This is the lowest expense ratio of all the companies doing business in Canada, and shows that, while the company maintained and substantial progress, its affairs are prudently and economically administered.

The Mutual Life has been known as one of the foremost companies doing business in the western field. The Winnipeg office, under the management of P. D. McKinnon, has done a very successful business the past year in Manitoba, Assiniboia and the western portion of Ontario, which districts come within the field of the Winnipeg branch. In Alberta, the business of the company is looked after from the Calgary office, and there is also separate management for British Columbia business.

Alberta Oats.

The Edmonton board of trade has been testing the germinating qualities of oats grown in that district. The following has been sent, with a request for publication, which we gladly give:

Sir,—As our board was anxious to find out about the germinating power of oats, one of the members who had fifty thousand bushels on hand of last



Western Farm Homes—Residence of J. A. Snell, Yorkton, Assa.

enough to look at the other side of the question. Instead of figuring only on the loss occasioned by lack of transportation facilities, it would be interesting to have an estimate from some of our farmers' grievance orators as to how much the farmers would have lost if they had been able to market all their wheat as soon as it was threshed. We appended the following article from Bradstreet to show how the Manitoba wheat crop situation is regarded south of the boundary:

The American Miller notes that the 50,000,000-bushel wheat crop of Manitoba in 1901 has forced upon American millers and economists the disagreeable conviction that the United States wheat grower is no longer the controlling factor in Mark Lane. No doubt this conviction would have come sooner, and with much more force, if the Canadian car famine had not greatly retarded the movement abroad of the Manitoba crop. Even with a very large part of the crop held back, simply because it could not be moved to distant markets, the American miller has seen Manitoba wheat taken by British importers at "bargain-counter" prices, thus giving British millers a better wheat than No. 1 northern at a price that is reflected in a stagnant American export flour trade. Unfortunately, the future promises a worse condition rather than a betterment, and for obvious reasons.

business. The present prosperity in Canada is perhaps best evidenced by the satisfactory statements of our financial institutions, none of which, however, have made greater strides in the life insurance companies.

The Mutual Life is, as its name implies, a purely mutual company, having no shareholders. It is now in its thirty-third year, thus having the advantage to be gained by long experience and stability through its large and well invested funds. The insurance written last year was \$4,071,000, and in the past five years by \$18,920,000. The insurance in force now reaches the large sum of \$31,718,001, while the assets are \$5,757,822. The surplus over all liabilities, on the company's standard, is \$570,970, and on the Government standard \$905,470. A point worthy of special notice is the fact that the interest income exceeded the death claims last year by \$67,307, and in the past five years by \$185,920.

The large amount paid to policyholders, \$465,932, including \$305,021 paid to living policyholders, for profits, endowments, etc., is perhaps the best proof that this is essentially a policyholders' company, as progress can be most readily seen by the following items of gain over the previous year:—

Insurance in force	\$2,190,005
Assets	575,907
Income	165,741
Surplus	610,233

The President, Mr. Robert Melvin

year's growth, handled Mr. Donald Ross, our well known horticulturist, seven samples indiscriminately taken from seven different bins, and the following explains the result:

Dear Sir,—I have tested the several samples of oats submitted to me, and report their germinating powers as follows: Sample No. 1, 50 per cent.; No. 2, 82 per cent.; No. 3, 96 per cent.; No. 4, 82 per cent.; No. 5, 90 per cent.; No. 6, 64 per cent.; No. 7, 80 per cent. Yours truly, Donald Ross.

F. FRASER TIMS,

Secretary-Treasurer.

The Edmonton Board of Trade.

Country cow hides of best quality are now being held by sellers in Chicago at 8c per pound, and any business moving is on this basis, excepting that which is covered by old contracts. This is 1/2c better than the price we quoted a week ago. It is reported in Chicago that the supply of these hides is smaller than usual.

The Northern Navigation Company, of Collingwood, some time ago acquired an interest in the stock of the Northwest Transportation Company. The latter is sufficiently large to make the Northern Navigation Company one of the virtual owners of the line. It has now been decided to amalgamate the two companies under one management. The Northwest Transportation Company will be merged in the Northern Navigation Co., the latter name being retained for the company.

No Tariff Changes.

Mr. Fielding made his budget speech at Ottawa on Monday. Regarding the tariff he said:

"We do not propose any tariff changes this session. I do not for a moment claim that the tariff is perfect. On the whole we claim it is a very good tariff, and when we consider the conditions under which it was made, the complicated nature of the problem we had to deal with, I think we can congratulate ourselves on framing a tariff so well devised to meet the necessities of this country." "At the same time, sir, we think it is not wise to make frequent changes in the tariff, and while we have made a few small alterations, we have resisted applications in the past, and are resisting them now. Still after being in operation for a number of years we may need to make a revision. Conditions may change at home and conditions may change abroad; we do not think it is to remain always as it is, but we think the time is not opportune to make any changes now.

"We think before we yield to some of the claims advanced, that we can have the industrial statistics of the

make any changes in our tariff. But when that time arrives at no distant date, and this House is ready the subject will be dealt with by this government in the same spirit of caution, the same policy of moderation that has always marked them in dealing with tariff questions in this House hearing all sides and so in the end reaching a decision not best for one class or trade, but that which is best for the people of Canada as a whole."

Dealing with the duty on news print Mr. Fielding said: "That matter is now under consideration of the government and the Canadian Press association had promised to furnish the government with some further information. When that information is received, if we find the duties in our orders have not carried out the object in view, of course some amendment should be made in order to carry out the intention of the government."

The only industry which was specially dealt with by Mr. Fielding in his speech was that of manufacture of beet sugar. The only thing he has done is to continue machinery for the manufacture of sugar another year longer on the free list.

ing of the steel, and within a few years your sky-scraper will fall."

The speaker said that the elevated road structure would not prevent the corrosion. He asserted that within ten years they will be dangerous and within twenty years out of service. The corrosion of one-fifth of the thickness of the steel frame works of the structures, he said, will render them incapable of bearing their own weight.

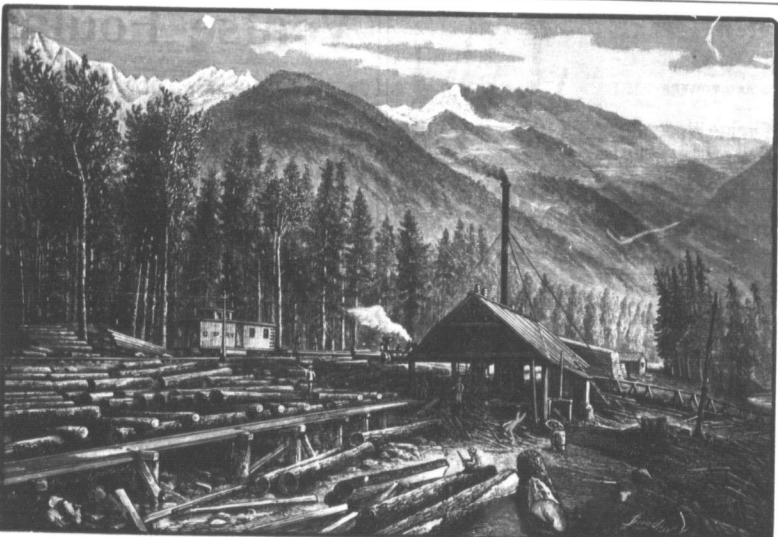
Brandon Summer Fair.

Brandon, March 17.—The regular meeting of the Western Agricultural and Arts association was held Friday afternoon. There were present Messrs. McPhail, in the chair, Anderson, Allen, Brisbin, Campbell, Fleming, Kelly, Matheson, Patmore, Sherriff, Trotter and Warner. Communications were received from the land department of the C. P. R., Geo. Bryan, Massey Harris Co., Lake ester & Woods Milling Co., Dominion Shorthorn association, and many others, acknowledging the receipt of the souvenir book of

that are owned by farmers, and that are not used for racing purposes, and that the committee frame special rules for same."

The prize list committee recommended the following amounts: Horses, \$1,500; cattle, \$1,200; sheep, \$300; swine, \$400; poultry and bee stock, \$500; dogs, \$200; agricultural products, \$218; horticultural products, bees and honey, \$300; dairy products, \$250; natural history, \$300; fine arts, \$220; ladies' work, \$130; domestic manufactures, \$85; schools, \$25, also "that there be only one class for Shorthorns, and that the number and value of the prizes be increased to four for each section." "That in all classes a third class 'highly recommended,' be added." "That in agricultural products the entry fee be 25 cents for each entry," and "that a well be dug at the south end of the horse stable No. 2."

The outlook for the biggest success, in next summer's exhibition, of all was never brighter. The grants from the government and the Brandon council have not been increased, but with the coming season, which bids fair to be an exceptional one, this falls as a factor in the success.



Romantic Saw Mill Site in the Rocky Mountains, on the Canadian Pacific Railway. View kindly furnished by the Watrous Engine Works Co., who supplied the plant.

Sky-scrapers Will Fall.

Chicago, Mar. 15.—"The steel frame work in many of the big buildings in the business district of Chicago is corroding, making them very dangerous. It is only a question of a few years when these buildings will fall to the ground."

This statement was made by General William Smyth Smith at the thirty-fifth annual dinner of the Chicago real estate board. He added: "That the steel frame work of some of the sky-scrapers is in the condition stated is nothing short of a public outrage." The speaker explained that his statements were based on personal observations and investigations. "The steel frame work imbedded in concrete will last 2,000 years," he said, "but the buildings are left free to the action of the air and gasses which circulate through the space about the steel. The owners of these structures have the steel painted with oils. This oil will withstand the corroding process about three years. Then begins the corroding

Brandon: from Dr. S. W. McInnes, M. P. P., stating that the government had made a grant of \$2,750 this year; and from the C. P. R., stating that exhibits would be carried at 50 per cent. of a single rate for round trip.

The following donations were received and acknowledged with thanks: Brandon city grant, \$500; Massey Harris Co., gang plow, value \$40; Inspector A. S. Ross, special, \$10; Milne Bros., silver cup; G. V. Hastings, Canadian Moline Plow Co., plow, value \$22; Dominion Swine Breeders' association, \$250; Dominion Clydesdale Breeders' association, silver cup; Smith & Barton Co., two parlor lamps, \$15; Calgary Brewing Co., trophy; Lieutenant-Governor of Manitoba, \$20; S. W. McInnis, M. P. P., \$25; Holstein Friesian Association of Canada, \$5. The reports of the sports and attractions committee was received and adopted, with the amendment that "the farmers' race be not necessarily for green horses, but horses

New Tariff.

The Canadian Northern have in preparation a tariff of merchandise rates from Port Arthur, their Lake Superior terminal, to Manitoba points. The rates to Winnipeg will be: Class 1, 36c; class 2, 7c; 3, 62c; 4, 47c; 5, 42c; 6, 35c; 7, 26c; 8, 26c; 9, 25c; 10, 21c. The rates are for 100 pounds, subject to Canadian joint freight classification.

They will also put in effect the following carload commodity rates from Port Arthur to Winnipeg: Cattle, oilers' work, 25 cents per 100 lbs.; petroleum, etc., in tank cars; crude petrol, 35 cents per 100 lbs.; apples, dried and evaporated; axle grease, binder twine, canned goods, cranberries, glass, canned window; iron and steel, oils for machine and lubricating purposes; asphalt, spirits of turpentine, wire, barbed or telegraph, 40 cents per 100 lbs.; oranges and lemons, 50 cents per 100 lbs.; boots and shoes, 62 cents per 100 lbs.

This tariff will take effect April 1.

last census. They are not available yet, but we hope to have them in time for next year and to see from them the condition of the industries of the country. Then we have certain negotiations regarding trade with other countries. We are hopeful that we can broaden the scope of our trade with France.

Referring to the situation regarding Germany, Mr. Fielding said: "Again, and a stronger reason for not taking action now, we are invited to take part in two conferences in London this summer. One is an imperial conference, called by His Majesty, and the other is a conference of the colonies, called by the Canadian government, to see if we cannot bring about better relations between Australia, New Zealand and Canada. It is our duty to participate in the second conference and bring about such improved relations as may offer larger markets for the products of Canada."

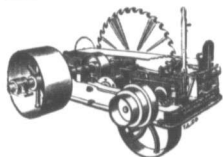
"In view of these negotiations with other countries, with His Majesty's government and with the sister colonies, we think the time is not ripe to

The Choice is Yours

We can supply suits \$4.00 to \$14.00.
 You get all you pay for in either case.
 We do not handle the "just as good" kind.
 Ours is the best that experience, judgment and mechanical skill can produce.

DONALD FRASER & CO.

Manufacturers of Fine Clothing
WHOLESALE WINNIPEG—125 Princess Street.
 MONTREAL—502 St. Paul Street.

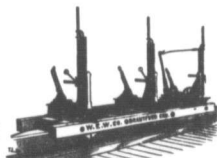


ENGINES AND BOILERS

Waterous Engine Works Co
 WINNIPEG, MAN. AND VANCOUVER, B.C.

SAW MILL MACHINERY

Shingle Mills and Planers
 Edgers and Trimmers



**THE STUART-ARBUTHNOT
 MACHINERY CO., LIMITED**

80008088 TO STUART & HARRIS
 .. 784-786 Main Street, Winnipeg

**HEAVY MACHINERY MERCHANTS
 ELECTRICIANS**

Sole Agents for:

"Leonard" Engines and Boilers, "Brown" Automatic Engines, "Canton" Mining Fire and Boiler Feed Pumps, "Cameron" Steam Pumps, "Dodge" Wood Split Pulleys, "Beadmore" Leather Belting, MacGregor, Gourlay & Co.'s Road Working Machinery, Stratford Mill Building Co.'s system of complete Flour Mills.

LONDON Motors, Dynamoes and Elevators.
 PACKARD'S LAMPS, Transformers and Supplies.

**CLARE BROS.
 & CO.**

**Stoves and
 Furnaces**

**Metal Roofing and Siding
 Steel Embossed Ceiling
 Eave trough and Conductor Pipe
 Graniteware and Tinware**

CLARE & BROCKEST
 Managers.

WESTERN BRANCH, WINNIPEG, MAN.

Established 110 Years.

Hartford

**Fire Insurance
 Company of Hartford,
 Conn.**

Assets:

\$12,259,076

**Reinsurance
 Reserve:**

\$6,798,504

W. W. SCRIMES,
 Supt., Winnipeg.

Agents wanted in unrepresented districts.



WAREHOUSES:
TORONTO AND MONTREAL

OFFICES: WINNIPEG, VANCOUVER, QUEBEC, HALIFAX

SHOWN THIS WEEK BY OUR

TORONTO HOUSE AND REPRESENTATIVES

Clearing Lot of 4000 Pieces

Venise Foulards

Extra Choice American Prints

32 inches wide in Beautiful Designs and Colorings, at about half their regular value.

REPRESENTATIVES, MANITOBA, NORTHWEST TERRITORIES
 AND BRITISH COLUMBIA:

W. L. BROOK, W. T. WALTERS, G. W. PARKER,
 SHADOWN BLOCK, WINNIPEG

A. F. MCNAUGHTON
 VANCOUVER

LEITCH BROS.

Oak Lake

"Anchor Brand" **Flours**

FROM NO. 1 HARD WHEAT.

Bran, Shorts and all kinds of
 Chopped Feed and Grain.

ADDRESS

OAK LAKE, MAN.

45,000 TREES

20,000 Petrosky Russian Poplar.
 10,000 Wobati Russian Poplar.
 5,000 Russian Golden Willow.
 5,000 Russian Laurel Willow.
 5,000 French Laurel Willow.

We are offering the above quality of beautiful young trees, well rooted, about two feet high, for fall and spring delivery, besides a good stock of small fruits, flowering shrubs, Virginia Creeper, etc. This is the largest and finest lot of Russian stock ever offered in the west. Send for descriptive price list to

CALDWELL & CO.

Vinden Nurseries, VIRDEN, MAN.

Wholesale

We supply all out of town merchants with a full line of

Jewellery

at wholesale prices. Write for particulars.

D. R. DINGWALL Ltd.

424 and 584 Main St., Winnipeg.
 Sign of the Street Clock.

A. CARRUTHERS & CO.

Dealers and Exporters of

**Hides, Wool, Sheepskins,
 Tallow, Seneca Root
 and Raw Furs**

Liberal advances made on shipments against Bill Lading. Wood packs, Hides Ropes and Tags furnished on application.

Office and Warehouse:

120-122 King St., Winnipeg, Man.

**JAS. MCCREADY & CO.
 LIMITED.**

WHOLESALE ..

**Boot and Shoe
 Manufacturers**

MONTREAL, QUE.

W. WILLIAMS, Agent.

GROCERY TRADE.

The Tea Market.

There was a steady improvement in the demand for teas this week, and the usual conservative has been more active than for some time past, says the Montreal Gazette. The demand has been principally for medium and low grade Japans, and sales of some of the finer teas have taken place, including one lot of 700 packages at prices ranging from 1½ to 1½. The stocks of teas on spot are small to be very small for this season of the year, both in Great Britain and in Canada. The buyers in some cases are now completely sold out, consequently, the undertone to the market is much firmer, and it is stated that no low grades can be had under 14c, and that the offerings are even limited at this figure, as the impression is that prices will improve still further before any new crop goods come to hand. Gunpowder teas are very scarce on spot, and the position of the market for these grades is strong. The market for times, is unobtainable, and those who have any are bidding firm at 20c. In Indian and Ceylon the movement has been fairly good, and some fair-sized lots have changed hands at prices ranging from 7½ to 10c. In conformity to advices from London, under date of March 15, the market for Ceylon is in a somewhat better position, and the improved demand and the better quality of the goods that have been offered, India tea have also shown a decided improvement, and prices in some cases have advanced 1-4d to 1-2d per cwt. The market for all the best teas, the best, that over 15,000,000 lbs. have been already shipped away, and some 10,000,000 lbs. more, of the 15,000,000 lbs. pretty certain, we shall not be so far short of last season after October of this season, and out at 16½. 10,000,000 lbs., and that was generally reckoned as 10,000,000 lbs. too much, and the market is not so confidently flattering after all. The comparatively small proportion of command and the fact that almost all to keep prices steady for anything that can go into the cutting-fine estate.

Grocery Trade Notes.

Maple sugar began to run in the sugar market at Quebec the early part of last week and new syrup is now in the Montreal market. There has been a decided improvement in the condition of the market for Barbadoes molasses at the Island, the first cost price being quoted at 8c. The Montreal Gazette. This low price, as compared with those ruling a year ago, has caused an increase in local buyers, and they have commenced to operate much earlier this year, as we understand that sales of three cargoes have been made during the past few days on the basis of 8d first cost. On March 15, 1901, the first cost price was quoted at 11c, and old molasses, on spot, was selling around 34c to 35c, a price which for new crop product this year is 5c lower, and old on spot 7c to 8c. Latest mail advices from Barbadoes say that the weather has been very dry, and that the crop in the districts is feeling the want of rain.

THE DRY GOODS TRADE.

The Advances in Cottons.

The advance in the price of domestic cottons had been expected in the local market ever since the withdrawal of the regular price lists some time last month, says the Toronto Globe. The advance, as already reported, was 1 to 10 per cent. In grey and white goods there has been a decided advance, and they have been buying steadily since before the list prices were withdrawn, and when the list prices were withdrawn by the mills they got such lines as they were short of in the expectation of having made up their orders. The list prices were withdrawn, jobbers were not able to place orders with any degree of certainty, and they have been buying, as orders were then only received by the mill people subject to the advance in the new goods, a direction that might be decided on, and agents were not allowed to make firm orders. The mills, however, having been well supplied with the goods before

the advance, retailers will no doubt expect to get them at previous quotations, but in cases where stocks of certain lines of goods are low, and the wholesale trade have to repeat orders at the advance, retailers will have to pay the advance. The advance represents quite a good rise in the price. On March 15, 1901, the advance of an advance of 10 per cent. in the price of denims. This advance was expected. About a month ago the prices of denims were advanced 5 per cent., and of course, the stocks of these goods are not very heavy in the markets, and this advance is likely to be felt soon by the retailers. The advance in denims and greys. A large amount of blue and grey are used in Canadian homes. There has been no further notice of any advance in ducks. The advance made some weeks ago, however, covered the necessities of the situation, but as the trade is now pretty well in the hands of an American syndicate, and the American syndicate on the other side of the line is very firm, not only on account of the cotton being in short supply, but also touching the raw material, but because of the shortage of stocks in the market, so soon as the advance, the difficulty in getting prompt delivery from the mills, prices might advance still further.

There has been no advice from British manufacturers of advances in cotton goods, but the advance in the prices across the Atlantic will also advance. Stocks of such goods, however, have been very low in the importing firms, and any advance in prices now should not have much effect on the Canadian markets.

Dry Goods Trade Notes.

Tan colored hosiery is popular in New York. Navy blue chevrot cloths are favorites for next fall's wear. Dry goods merchants report a good demand for blue and white striped factory lawns and such goods. New York market reports state that cotton goods are in short supply in that market, and some lines rule higher. Stark ducks are ¼c higher.

THE IMPLEMENT TRADE.

Enlarging Their Works.

Last week we mentioned briefly that the Frost & Wood Co., Ltd., manufacturers of harvesting machinery and farm implements, of Smith's Falls, Ont., were about preparing to increase their works. The following is a list of the firm's Falls papers, which gives a more extended reference to the work of the company:

Extensive enlargement of the plant of the Frost & Wood works took place last year when the large four-story brick building 350x90 feet was erected on the market place side of the works, but it seems that was only a beginning of the programme of general enlargement. The history of this long established industry, but there were many indications that it had not nearly reached the limit of the volume of business that could be done. Notwithstanding the greatly increased demand for their products, the company were unable to fill their orders for several lines of machines and many customers were disappointed. For this year a number of important improvements have been made in their binder and mowers, and now it is confidently asserted that the best of mowers is made in the world. The demand for these machines, as well as for their other lines of implements, is expected to be much greater than ever, and in anticipation of it a larger output than ever is the course of manufacture. The Coulthard Scott works, purchased last year, are being run to their full capacity, and the season for drills and seeders now there is now close at hand and the demand for these machines is unprecedented. Notwithstanding the shops there have been run to their full capacity, and many orders in now than can be filled and this week R. J. Whyte, the assistant general manager of Frost & Wood, says that if any arrangement can be made to get more work out of the shops during the next month, in the shops

here everything is going on smoothly. Yesterday there were 400 men at work here, the largest number ever on the pay roll.

To meet the requirements of this general expansion in trade and to outfit and equip the large new buildings necessary, the firm of the Oshawa business can be moved here it has decided to increase the authorized capital stock of the company from \$800,000 to \$1,500,000. This was decided on at a meeting of shareholders held here yesterday, but only a part of the increased stock will be issued. The plans for a handsome new office on Water street are now ready and the architect will take up next the plans for a large building fronting on Water street between Mr. Willcraft's and Mrs. Davis' houses, and extending back to the other shops at the foot of the hill. That as well as the office will be built this summer and this autumn it is expected that the Oshawa business will be moved here, which means the employment of at least 150 more men than are at present at work.

The Twine Market.

An increase of substantial proportions in the general volume of twine business is reported by houses producing as well as by consumers. Nearly all such are obtaining numerous orders and most of the contracts call for liberal protective clauses of some sort. In some sections, notably those west of the province, the partial crop failures, the disposition to prefer purchases is pronounced, although the objections of growers have been overcome by the use of a crop-failure clause a contract.

Manufacturers generally appear unusually confident regarding the outcome. The probable supply of twine for the season is not thought sufficient to cause a demoralization of prices at the end. There is no disposition at present to advance prices and a decline seems to be quite probable so long as the fiber market holds its present position. Current prices, f. o. b. Chicago, and other central distributing points, are as follows:

Sisal	11
Standard	11
Manila (500-foot)	12½
Manila (900-foot)	13
Pure Manila	15

Five ton lots, 10c. Car lots, ¼ cent less. Fall terms.—Farm implements, New, Chicago.

Implement Trade Notes.

Cars are reported to very scarce in the West, and this has interfered seriously with the western shipments from eastern implement and carriage factories.

Spencer & Stoddard, general merchants, Cardston, Alberta, are adding implements to their lines. They have arranged to handle the manufactures of the Frost & Wood Co., Ltd.

Receipts of fibre in America are not large as they might be in view of the probable requirements of the binder twine market. If the crops prove to be up to their average this year, there may be a shortage of twine as the visible supply is slight.

Hardware Trade Notes.

Window glass jobbers in the United States intend advancing their prices 5 per cent.

Turpentine is firm in price at producing points, and the position of the market seems strong.

Readers of the Commercial will notice by the advertisement of The Jas. Smart Manufacturing Co., in this issue, that the firm has introduced a line of shelf goods and hardware sundries in its Winnipeg warehouse and is prepared to fill all orders for these goods.

The American Metal Mark says:—Independent wire and wire nail mills are rapidly filling up with orders, and, at a meeting of managers held here the latter part of March, prices will probably be advanced 4c per ton. Stock bar is very quiet, and is quiet throughout the Dominion, excepting their mining interests. The company has an authorized capital of \$3,000,000 and is incorporated under the laws of Ontario. The name and style will be McKenlie, Mann & Company, Limited.

buyers see no particular objection in extending contracts up as far into the future. Some lines of steel and iron are sold almost up to the end of the year, and nearly all the orders are for July. Transportation facilities are still inadequate to handle the large quantities of building material, and also having the effect of holding prices down to a conservative basis.

Lumber Trade Notes.

The Hanbury Manufacturing Company's sawmill and floor factory at Brandon, Manitoba, is being built. The Northern Lumber Company's sawmill at Fish Creek, Manitoba, was burned early last Saturday morning. Besides the mill about forty thousand feet of lumber was also burned.

In local lumber circles an advance in the price of B. C. fir flooring has been in some lines of B. C. cedar lumber is talked of. It is said that this will take place almost immediately. This class of lumber has been very firm in price lately.

The Revelstoke Lumber Company, Revelstoke, B.C., are re-arranging their machinery with a view to starting sawing as soon as the ice goes out. The company's output of lumber is 4,000,000 feet of timber ready to drive.

The chief commissioner of lands and works of British Columbia, in a deputation of loggers on Saturday last, said that the government would remove the tax on cedar logs cut for export from the province. Since the government has decided to remove the cedar logs many shingle mills are being erected in the province and loggers are very anxious to get a better price from the American mills they prefer to sell to them, but the tax prevents this.

In reviewing the lumber market of the United States, the American Lumberman says of white pine: The only thing about white pine which the supplies are being rapidly lessened and markets which a short time ago ago had a goodly amount of orders are now seeing the foundations of the piles and are troubled somewhat to have to meet a market where sorting out can be done by rail, but it is slow and unsatisfactory, especially as the very terms might not be unwise as the are those which are scarce everywhere. Good lumber is almost out of the question and a good assortment are now continually coming into more prominence. The Lake Erie markets report an active demand for No. 2 boards. It is one of the hopeful features of the white pine situation that the low grades are not so unobtainable as they are. It looks as though the supply were to be curtailed somewhat this year owing to the breakup of logging, although railroads penetrate the provinces to such an extent that a good many of the logs can be brought in that way which in former years would have had to lie over. A little shortage might not be unwise as the are low grades are concerned, were it not for the situation of No. 2 common and better.

Dairy Trade Notes.

Hough & Crowe are erecting a creamery building at Solgirth and will operate it the coming season.

The cheese factory at Rosburgh, Man., which has been standing idle for some years is to be fitted up with a butter plant and operations started as soon as convenient.

Fruit House Moving.

Lock Bros. & Co., fruit and produce merchants, Winnipeg, will move into larger and more commodious quarters on April 1st. Their new premises on the corner of Bannatye and Rorie Streets, lately occupied by the Rubber Fruit Company.

A company has been formed by McKenlie & Mann, the well known Canadian railway contractors, to take over their railway interests in Manitoba throughout the Dominion, excepting their mining interests. The company has an authorized capital of \$3,000,000 and is incorporated under the laws of Ontario. The name and style will be McKenlie, Mann & Company, Limited.

He Never Sleeps

but always looking for

ORDERS for

REINDEER BRANDS

CONDENSED . . .

Milk
Coffee and Milk
Cocoa and Milk

EVAPORATED CREAM

EDWARDSBURG BRAND

Starch and Syrup

RELIABLE GOODS

FOR SALE BY ALL WINNIPEG WHOLESALE GROCERS

E. NICHOLSON

WHOLESALE AGENT
115 Bannatyne St. East, Winnipeg



Everything for Power

WINNIPEG MACHINERY & SUPPLY CO.

Wholesale Dealers

The Laurie Engine Co., Montreal, Engines, etc.; Olds Motor Works, Gasoline Engines for all purposes; The Hamilton Iron Tool Co., Ironworking Tools; Cowan & Co. Woodworking Machinery; The Ohio Pump Co., Canton, Ohio, "Ohio" Steam Pumps for all purposes; Flour



Mills and Elevator Machinery and Supplies; Saw Mill Machinery; Chisholm, Boyd & White Co., Boyd's Patent Brickmaking Machinery; The United Electric Co., Toronto; Electrical Motors, Dynamos and Supplies; Shantling, Puleys and all Accessories. WRITE US

Second Hand Machinery Bought, Sold or Exchanged.

179 Notre Dame Ave. East, Winnipeg, Man.

Excelsior Cement

Makes the strongest and most desirable walls and floors for buildings. Full descriptions.

Manitoba No. 1 Hard Wall Plaster—Up-to-date Plaster for finishing walls. Made in Manitoba by

THE MANITOBA UNION MINING CO. Ltd.

Office—214 Grain Exchange, Winnipeg



FISH

Fresh salt water fish, including salmon, halibut, cod, haddock, shad, trout, mackerel, smelts, tommy cods, foundlers, herring, flnan haddie, sea bass and salt water eels.

W. J. GUEST

Wholesale Fish, Game, Poultry, Etc
602 Main St., Winnipeg.

SOURIS COAL

The best and cheapest fuel in the market. Shipped direct from mine at Roche Perce to all points in Manitoba and the Territories.

Souris Coal Mining Co. Ltd.

Winnipeg Office

P. O. Box 744.

447 MAIN ST.

**THE W. E. SANFORD
MF'G CO., LTD.**
HAMILTON, ONT.

Wholesale

Clothing Manufacturers

Offices and sample rooms in the Bedford block, Winnipeg, corner of Princes and Bannatyne streets, where a complete set of samples can always be seen. Western representatives—H. Kita, W. Dunlop, Geo. Shaw, A. McAllister.

FRANK LIGHTCAP

DEALER IN

HIDES BELTS, WOOL, HIDES SENECA Etc.

EXPORTER OF

NORTHERN FURS

Highest prices paid for consignments and returns made promptly.

Write for circulars containing market reports and full quotations.

172-174 KING ST., WINNIPEG.
P. O. Box 484.

Harry Leadlay. Allison Leadlay

H. & A. LEADLAY

Successors to

Toronto Hide & Wool Co.

DEALERS IN

HIDES, WOOL, SHEEP SKINS.

TALLOW AND RAW FURS

Highest market prices paid. Consignments solicited.

295 Ross St. Winnipeg, Man.

J. L. Meikle & Co's

Travellers are now on the road with a complete line of Spring and Imported China, Toy Fancy Goods, Musical instruments, etc. Their assortment and prices will interest you.

J. L. MEIKLE & CO.

PORT ARTHUR, ONT.

An Irish friend insisted that Scotchmen should stay at his hotel instead of a hotel, and kept him there for a month, playing the bagpipes in detail, even to treating him to places of amusement, paying all his cab fares and the rest. When his visitor was returning to Dundee, the Irishman saw him down to the steamer, and they went together to have last cigar. "Now, look here," said the man from Dundee, "I'll have no more of this. Here you've been keeping me in your house for a month, and you part for a' the amusements and cab fares so on—I tell you I'll stan' case and o' it! We'll just have a tose for the one!"—The Scotsman.

Winning Hardware and Metal Prices.

AXLES - Per pound, 109 1/2; axle and tie combined, each, 204 1/2.
ADHESIVE - Post hole, Vaughan's, each, 50c.
AXES - Bench, 40c per cent; chopping...

BLINDING PAPER - Anchor, plain, 5c; Cyclone and Jubilee, plain, 5c; Anchor, tarred, 6c; Cyclone and Jubilee, tarred, 6c.
BUTS - Cast, loose pin, common, 60c per cent; stove, 60c per cent; iron, 60c per cent.

CHAINS - Coal, 1 1/2 inch and 1 3/4 inch and 1 1/2 inch and 1 3/4 inch and 1 1/2 inch and 1 3/4 inch.
COPPER - Tinned sheets, 22c; planished, 20c; galvanized, 18c; sheet, 16c; galvanized, 14c; sheet, 12c.

GLUE - Sheets, 1 lb; broken, 12c; glue water, for Kalsomine, 15c.
GRINDSTONES - 1 1/2 and 1 3/4 inch.
HARVEST TOOLS - 50c and 10c per cent.

IRON - 100 lb, \$2.50 base; Swedish iron, 100 lb, \$2.75 base; sheet, black, 100 lb, \$2.50 base; sheet, galvanized, 100 lb, \$2.75 base.

LEAD - 50 lb, \$1.50 base; sheet, 50 lb, \$1.50 base; sheet, 50 lb, \$1.50 base.
NAILS - 100 lb, \$1.50 base; sheet, 100 lb, \$1.50 base.

STEEL - Sheet, 100 lb, \$3.50 base; sheet, 100 lb, \$3.50 base.
WIRE - 100 lb, \$2.50 base; sheet, 100 lb, \$2.50 base.

Tool steel, \$2.50 base; the steel, \$2.50 base; tool steel, 1 lb, \$2.50.

STEELE BOILER PLATES - 1/2 inch, 1/4 inch, and 3/8 inch.
STAPLES - Galvanized, \$3.00 per 100 lb.

TINWARE - Plain, 2 1/2 and 2 3/4 per cent; tinware, 10c per cent.
TINWARE - Plain, 2 1/2 and 2 3/4 per cent; tinware, 10c per cent.

WATTS - Gray felt, 5c per lb; thin card wads in boxes of 500 each, 12c and smaller gauges, 20c per M.; thin card wads in boxes of 500 each, 10 gauge, 25c per M.

WATTS - Brass and copper wire, 20c per cent advance on the list; clothes line wire, 15c gauge, per 100 feet, \$2.50; barb...

WATTS - Brass and copper wire, 20c per cent advance on the list; clothes line wire, 15c gauge, per 100 feet, \$2.50; barb...

WATTS - Brass and copper wire, 20c per cent advance on the list; clothes line wire, 15c gauge, per 100 feet, \$2.50; barb...

WATTS - Brass and copper wire, 20c per cent advance on the list; clothes line wire, 15c gauge, per 100 feet, \$2.50; barb...

Tool Steel - Black Diamond, 8c; Jags and Steel - W. 50c; Sleighhose, 12c; tire...

Barb Wire - \$3 f.o.b. Montreal in less than car lots.
Horsehoes - Iron shoes, light and medium patterns, 12c; heavy, 14c.

Building Paper - Tarred, felt, \$1.70 per 100; 2 1/2 ply roofing, 25c per 100; 3 ply, \$1.10 per 100; carpet felt, \$1.25 per 100.

COFFEE - Manila, 15c per lb; Java and larger, 12c; Java, 10c; Java, 8c; Java, 6c; Java, 4c; Java, 2c.

GLASS - Single pane, first break, 15c to 25c; second break, 12c to 20c; third break, 10c to 18c; fourth break, 8c to 16c.

IRON - 100 lb, \$2.50 base; Swedish iron, 100 lb, \$2.75 base; sheet, black, 100 lb, \$2.50 base; sheet, galvanized, 100 lb, \$2.75 base.

LEAD - 50 lb, \$1.50 base; sheet, 50 lb, \$1.50 base; sheet, 50 lb, \$1.50 base.

STEEL - Sheet, 100 lb, \$3.50 base; sheet, 100 lb, \$3.50 base.

bottoms, 54c; heavy copper, 104c; coil wire, 50c; light copper, 104c; heavy...

IRON - 100 lb, \$2.50 base; Swedish iron, 100 lb, \$2.75 base; sheet, black, 100 lb, \$2.50 base; sheet, galvanized, 100 lb, \$2.75 base.

LEAD - 50 lb, \$1.50 base; sheet, 50 lb, \$1.50 base; sheet, 50 lb, \$1.50 base.

WATTS - Brass and copper wire, 20c per cent advance on the list; clothes line wire, 15c gauge, per 100 feet, \$2.50; barb...

WATTS - Brass and copper wire, 20c per cent advance on the list; clothes line wire, 15c gauge, per 100 feet, \$2.50; barb...

WATTS - Brass and copper wire, 20c per cent advance on the list; clothes line wire, 15c gauge, per 100 feet, \$2.50; barb...

WATTS - Brass and copper wire, 20c per cent advance on the list; clothes line wire, 15c gauge, per 100 feet, \$2.50; barb...

WATTS - Brass and copper wire, 20c per cent advance on the list; clothes line wire, 15c gauge, per 100 feet, \$2.50; barb...

Montreal Hardware Market.

Pipe Iron - Montreal, March 22.
Black Sheets - 20c for 8 and 50 gauge.
WIRE - 100 lb, \$2.50 base; sheet, 100 lb, \$2.50 base.

Montreal Hardware Market.

Pipe Iron - Montreal, March 22.
Black Sheets - 20c for 8 and 50 gauge.
WIRE - 100 lb, \$2.50 base; sheet, 100 lb, \$2.50 base.

Montreal Hardware Market.

Pipe Iron - Montreal, March 22.
Black Sheets - 20c for 8 and 50 gauge.
WIRE - 100 lb, \$2.50 base; sheet, 100 lb, \$2.50 base.

Marmalade Oranges

Order now as season is over about April 1st. If you don't want the oranges we can give you it done up ready for the table—

In 7-lb. pails, per doz. 17.20
In tins, per dozen 7.20
1-lb. glass jars 2.00

Attractive package. Order sample lot.

THE **MORPHERSON FRUIT CO.**

LIMITED.

491 Main St., Winnipeg

**Genuine Wabash
Screen Doors
Reliable
Refrigerators
Lightning Ice
Cream Freezers**

Write for prices.

MARSHALL-WELLS CO
WHOLESALE HARDWARE,
WINNIPEG.

DRUGS

We now have a fresh stock of heavy drugs, such as EP-SOM SALTS, SULPHUR, Salt-petre, and Borax, not excelled in point of purity. Low prices for quantity.

Write for quotations.

The Martin, Bole & Wynne Co.
Wholesale Druggists.
P. O. Drawer 1461. WINNIPEG.



CANADA

The World's Favorite Galvanized Iron

Unequaled for Quality,
Flatness and Durability.

**JOHN LYSAGHT, Limited, makers,
Bristol, Eng.**
A. O. LESLIE & CO., Montreal, Managers Canadian Branch

Maple Leaf Rubbers

Take the lead for style, fit and durability. Send us in your Spring order now before the Spring rush! Best discounts and terms. Our stock is large and complete in all lines of Boots, Shoes and Rubbers.

Write for catalogue.

THE KILGOUR-RIMER CO. Ltd. WHOLESALE
57 Princess Street, Winnipeg

RAT PORTAGE LUMBER COMPANY

LIMITED

Head Office and Mills at RAT PORTAGE, ONT.

MANUFACTURERS OF ..

**LUMBER,
LATH, SHINGLES,
SASH,
DOORS**

AND ALL KINDS
OF WOODWORK

Branch: Point Douglas Avenue, WINNIPEG

Wholesale Boots and Shoes

See our New Samples for Next Fall consisting of Felts, Moccasins, Gloves and Mitts, Rubbers and Overshoes. Sorting Orders Receive Prompt Attention—Stock Complete—Prices Right.

TRAVELLERS now on the road.

Berlin Rubbers (Daisy and America Brands). Trunks and Valises

H. G. MIDDLETON & BRO. 139 ALBERT STREET
WINNIPEG
Adjoining Leland Hotel. P. O. BOX 623

S. Greenshields, Son & Co.

MONTREAL

Wholesale ..

**DRY GOODS
MEN'S FURNISHINGS
CARPETS, ETC.**

Winnipeg Sample Rooms:

412-414 McIntyre Block

Represented by—R. B. GALLAGHER, G.
M. NEWTON, A. C. RUSSELL.

THE WESTERN PACKING COMPANY

Our new abattoir on Alexander avenue is now completed and running, and we are ready to supply the trade both in the city and country with fresh killed meat of finest quality. Mail orders give prompt attention.

We are also open to buy live or dressed hogs and all kinds of produce, paying highest cash prices for same.

Abattoir and Offices

ALEXANDER AVENUE, - WINNIPEG

HICKS BROS. & Co.

TEA IMPORTERS

And wholesale dealers in

Fancy Groceries, Butter, Eggs, Cheese

Factors of Britannia, Beaver and Buffalo Blends of Packet Teas, and are Agents for "The Lipton's Package Tea" for Manitoba, N. W. Territories and British Columbia.

277 Rupert Street.

274 Pacific Avenue, Winnipeg

Factory,

WINNIPEG, MAN. YARMOUTH, N. S.

The Redding Shoe Mfg. Co.

**Wholesale Boots
and Shoes.**

You are invited to inspect carefully our New Samples for Next Fall, consisting of Moccasins, Gloves, Mitts, Rubbers, Overshoes, and the best line of Staple Goods ever shown in the West, for their Values, and Wearing Qualities. All Solid Leather Goods. Every Pair Guaranteed.

Large and well assorted stock always on hand. Sorting orders receive Prompt and Careful Attention.

A trial solicited.

WAREHOUSES:

137 BANNATYNE AVE., WINNIPEG

P. O. Box 753.

Telephone 194

MANITOBA.

G. B. Johnston is opening a lumber yard at Edrans.

John Small is opening a general store at Nepawa.

Andrews & Co., Jewellers, Winnipeg, are in liquidation.

W. Rurand has bought the tailoring business of A. Bellele, at Macgregor.

Black Bros. have purchased the hardware business of J. B. Taylor at Minnies.

The Winnipeg office of the Hygiene Kola Co., has been moved to 206 Pacific avenue.

A party of farmers are now on their way to Manitoba for the purpose of locating here.

The Hanbury Manufacturing Company, Brandon, will open a lumber yard at Hamilton, with W. F. Watson in charge.

Alex. Lyons and Thos. Munroe have formed a partnership for the purpose of engaging in the booting business at Roland.

J. Smith & Co., general merchants, Badlar, have dissolved partnership. The business will be continued by Rollins & Sons.

C. W. Miller has bought the interest in the hardware business carried on at Souris by Bambridge & Co.

Harry Jones, restaurateur, Winnipeg, will open a new restaurant on Main Street in the premises lately vacated by the Lake of the Woods Milling Co.

The W. M. Gibson Co., carpets, Winnipeg, have leased the Main Street premises formerly occupied by Scarbath & Co., wall paper, and will occupy it about April 1st.

Mr. Hartney has purchased a brick shop on Hartney now occupied by Scott & Conn, and will open a line of suit furnishings in addition to his present tailoring business.

Chalmers Bros. & Bethune, Manitoba, have purchased the property recently owned by the Waterloo, a Deloraine, and intend opening in the hardware business about April 1st.

Several electrical companies estimate that the city could save \$1,000 a year by operating its own fire alarm system. The total value is performed by The Bell Telephone Co.

The stock in trade and fixtures of John G. Soper, picture dealer, Winnipeg, which he sold last week, will be sold at auction on the 28th inst. by Newton & Davidson, the sale price is \$496.88.

The Hoover Manufacturing Company, Winnipeg, have decided to increase their present facilities for output and have leased the flat beneath the one now occupied in the Main block new machinery is now being bought.

The stock in trade of Josephine Chouinard, clothing and furnishings, Winnipeg, who failed last week, will be sold at auction at a rate on the dollar, on the 28th inst. by Newton & Davidson, the assignees. The value is placed at \$3,494.22.

The local assessment at the town of Gustave, has been fined by a magistrate for neglect of duty, at the instance of local residents. The neglect consisted in his having failed to retain certain lands which had accidentally slipped off the assessment roll.

The Melita board of trade held a meeting last week, and appointed three of its members a deputation to the local members of the government with a view to securing better railway facilities. It was also decided to issue local certificates in the Melita district.

Lilly & Carter, general merchants, Dauphin, are advertising their stock and premises for sale by auction. The stock is valued at \$10,000. The value of the stock is placed at about \$6,000, and of the building \$2,500. A reserve bid of \$8 on the dollar is placed on the stock.

The building occupied as a bakery by H. Johnson, at West Selkirk, was destroyed by fire Sunday morning last, together with its contents. The loss on the building was \$1,500, insured for \$2,000, no insurance. The building belonged to A. Simonsdon.

The Ross & Co., Limited, have been incorporated at Russell, Man., with a capital of \$100,000, to manufacture and deal in all kinds of goods,

wares and merchandise. T. S. T. Smellie, A. G. P. Smellie, D. W. McElvray, J. T. Rogers, and A. R. Tingey are the incorporators.

On Wednesday the case of the Crown vs. Scarlett was tried at the Portage la Prairie assizes. The charge was embezzlement. The accused was in the employ of the Massey-Harris Co. at Dauphin. The amount alleged to have been embezzled was \$723.50. The jury returned a verdict of guilty.

The building inspector of Winnipeg has, up to date, this year, issued sixty-six permits for the construction of \$81,550. This is the largest figure in the history of the city for a corresponding period. The total figures were \$280,800 for the same time, and in 1900 it amounted to \$38,250, or only one-third of this year.

The Waterloo Engine Works Company, Limited, will make extensive improvements to their branch premises at Winnipeg this year. Plans are now prepared for a brick and stone office building to be erected on the corner of Main and St. James streets. Tenders for the work close on March 28. The building will be 50x40 feet. It is intended for more commodious offices and a show room for machinery. The estimated cost is \$8,000. The company's office in the building ready for occupation within three months.

W. Henry Scovill, who arrived in Manitoba at the beginning of the maritime provinces, has decided to locate permanently in Calgary, and left the water for the western shore. Mr. Scovill has established an agency in Winnipeg for the lines which he represents. He is intended for more commodious offices and a show room for machinery. The estimated cost is \$8,000. The company's office in the building ready for occupation within three months.

Some of the manufacturers which he represents are: The Fraser & Neave Co., having factories, confectioners, Montreal; Young & Smillie, liquorice, New York; Canadian Cigar Co., Toronto; The Davis Mfg. Co., St. Stephen, N. B., ladies' wrappers; and the Globe Cigar Mfg. Co., being made in the Manitoba government for letters patent incorporating the Union Colonization Company. The company will control a large area of lands in the carman and Winnipeg districts, and intend to attract a large number of prospective settlers from out of the line. Ogden Finch, of Carman, has been appointed manager. The company, and F. B. Herbert, of Moorhead, secretary-treasurer. Offices have been opened in the Forum block, Winnipeg.

The local legislature at its last session authorized the government to pay out \$15,000 in redeeming the debentures of the town of Nelson. This is at an old boom town which, working on the hypothesis that it was to be one of the largest centres of the west, ran up an account against succeeding generations. When the boom burst there was practically nothing on which to rely. The town was left with a debt built within the boundaries of the town proceeded to move their buildings to the west, and the result was leaving the debt as practically the sole remnant of the once booming town. Now the government has arranged to pay off the indebtedness and to recoup the province for the outlay by six annual assessments of \$250,000 each.

West Selkirk was visited by a serious fire on Saturday morning last. Flames were discovered about 500 yards from the town. The fire started in a brick veneered building on Evelyn street. The building was occupied by the Baptist and the Young Publishing Co., which lost everything. Upstairs Heap & Heap, lawyers, had their office stairs and bookshelves. The Selkirk hall adjoining the College block, and owned and occupied by the Baptist as a church, was also burned to the ground and two smaller buildings, one on each side, were destroyed. The fire started in the Millie block across the road, were all broken by the heat. The loss will be about \$10,000. The Young Publishing Co., \$2,000; insurance, \$500; contents saved, Heap & Heap, \$3,500; insurance, \$1,000; Young Publishing Co., \$500; insurance, \$1,000; Selkirk Publishing Co., \$2,000; insurance not known. E. Rayner, \$100; no insurance.

H. Bird, \$100; no insurance. The government rifles belonging to the Rifle Association were destroyed. On Colclough's building, Carriers Brock, Johnson & Day, agents for the Queen Fire Insurance Company, had a risk of \$2,500. In the same company they have \$1,000 on Jas. Heap's office.

ASINIBOIA.

Thos. Meredith is closing his general store at Saltozcas.

S. B. Paul, implement dealer, Moosomin, has taken W. Moran into partnership with himself.

John and Joseph Glenn have gone into partnership in the implement business at Milestone.

ALBERTA.

R. A. Lawrence is opening a general store at Wetsakwinn.

F. Brett has opened a general store in Canyon, near Lacombe.

A stock shipping yard will be built at Winniford, on the Crow's Nest Pass road.

G. A. Love has bought H. M. Douglas' interest in the Red Deer Lumber Company at Red Deer.

W. L. Gillett has disposed of the general store at Kneehill Valley to A. H. Beggs, who will carry on the business.

Frank J. Taylor has opened a meat market at Lamerton, Lacombe district. He will also carry lumber and implements.

B. F. Johnston has formed a joint stock company at Calgary to establish a water and sewerage system, and purchase of the electric light plant from the present company. The meeting was decidedly in favor of the town taking hold of both propositions and raising \$140,000 for same.

A party of 1,000 Mormons are now on their way from Utah to join their fellow colonists in Southern Alberta in the vicinity of Cardston. They are travelling overland.

A large public meeting was held at Edmonton on Wednesday night, to consider the installation of a water-works and sewerage system, and purchase of the electric light plant from the present company. The meeting was decidedly in favor of the town taking hold of both propositions and raising \$140,000 for same.

NORTHWESTERN ONTARIO.

Miss Jones is opening a millinery and ladies' furnishings shop at Rat Portage.

A saw mill is to be established shortly at Devlin, a point on the Canadian Northern, near Fort Frances.

It is reported that the Canadian Northern Railway Company will build another elevator at Port Arthur this year.

The steamer Myles, which is wintering at Port Arthur, has been chartered to take the first cargo of grain from the new Canadian Northern elevator at that point to the east.

Work on the new docks for the Canadian Northern Railway Company at Carrot River, is as soon as the ice is gone from the bay. The docks will be 470 feet long and 100 feet wide. The surface will be occupied by a freight shed 50x400 feet in size.

BASKATCHEWAN.

H. Bird will open a butcher shop at Carrot River.

W. McLean is opening a blacksmith shop at Carrot River.

John Hamm and Abraham Klassen, doing business under the firm name of Hamm & Klassen, have taken over the lumber, mash and door business of J. Wick at Hays.

At a recent meeting of the Prince Albert board of directors of Victoria hospital, it was decided to proceed with the erection of a \$5,000 hospital building on their splendid site overlooking the town.

The Territorial government is bringing a car of breeding hogs from Ontario, for sale to the farmers.

Tenders were opened at the Winnipeg board of works on Thursday for the supply of 500 cords of wood, 30 cords to be delivered at Little Stony Mountain and 200 cords for the asphalt plant. E. Atkinson got the contract at \$4.17 per cord. The specifications called for green cut, dry wood, 75 per cent. tamarac.

FINANCIAL.

WINNIPEG BANK CLEARING.

Returns for the Winnipeg Clearing House for the week ending Thursday, show as follows:

Week ending March 20, 1902 \$2,474,401
Corresponding week, 1901 \$1,652,485

Financial Notes.

G. Matheson, of the Bank of Commerce staff, Winnipeg, has been transferred to the head office.

Application will be made to the parliament of Canada at its present session for an act to incorporate "The Metropolitan Bank of Canada," with the usual powers of banks under the Bank Act and its amendments.

Notice is given that application will be made to the parliament of Canada, at its next session, for an act to incorporate a company, under the name of "The Dymont Banking, Loan and Savings Company." The application is dated from Owen Sound.

Insurance Notes.

The New York Journal of Commerce puts the fire losses of the United States and Canada during the month of January at \$10,632,800, or 20 per cent. the same month of 1901 the losses were \$10,744,950, and of 1900, \$11,755,300.

The grand lodge of the Manitoba branch, A. O. U. W., met in Winnipeg last week in annual session. The meetings commenced on Wednesday. The election of officers resulted as follows: G. M. W. Bro. A. A. Bird, Winnipeg; grand treasurer, W. D. Cowan, Regina; grand scribe, H. J. Stinson, Winnipeg; grand recorder, J. M. Matthew, Winnipeg; grand receiver, John Mason, Neepawa.

The Weather.

The storm which we reported as prevailing when we closed our report a week ago, proved not only the first but the most severe of the winter of the worst in many years. In some districts the storm is said to have been the most severe of the winter of March, 1882. The storm was heaviest south and southwest from Winnipeg, and lightest over the north-west. Along the southern boundary of Manitoba and southward in Minnesota, the snow was put back as very severe and the fall of snow heavy. The railways were blocked on some of the lines for several days. In Winnipeg there were great drifts of snow, such as have not been seen for years, and for the first time this winter sleighs were brought into general use. Some loss of cattle is reported by being drifted over with snow. As the weather was very mild previous to the storm, and the ground bare in the southern and western districts of the province, cattle had been turned out on the prairie to graze.

The snow is generally taken as a favorable feature. It will provide moisture and improve the crop outlook. The price of grain has put back at least two weeks, which is not considered a disadvantage, as the season was opening very dry and very early springs are not considered as favorable for the farmer. Growth is forced ahead and early checked by late frosts, which are liable to come every spring, whether the season be early or late.

From a business point of view the check is not taken seriously. Many houses were behind with their supplies, owing to the early demand for spring lines, and the delay will give them an opportunity to get ahead. In some cases men and teams who had been withdrawn from the woods owing to the heavy snow, were sent back after the storm, as the snow would insure a couple of more weeks in the woods getting out their cord and cordwood.

The weather has been fine since the storm of Thursday. It turned very mild again, since which time the snow has been melting fast. A very bright rain, which started yesterday, is still falling.

A train load of settlers from North Dakota, with 25 cars of effects, arrived via the Soo line and North Portal yesterday.

glows. Potatoes, farmers' loads, delivered here, per bushel, to 30c per bushel; carrots, 7c per bushel; beets, 60c per cwt.; onions, 10c to 30c per bushel; lettuce, 2 to 3c per pound; and radish, 40c per dozen bunches; and green beans, bunches, onions, 4c per pound.

DRESSED MEATS—Beef is very firm, with a prevailing scarcity of cattle. We quote: Beef, city dressed, 7 to 8c per pound; country, 5c; ground beef, veal, 8 to 9c; mutton, 8c; lamb, 8c; hogs, 7 1/2c.

HIDES—The market for hides has held about the same. Receipts are light and quality of country hides poor. Frozen stock will soon be out of the market. No. 1, 30c; No. 2, 27c; No. 3, 24c; No. 4, 21c; Country, frozen, are worth 2 1/2c per lb. delivered here, less 5c lbs. tar, keeps the same price as hides; calf, 7 1/2c; lockings, 25 to 40c; slunks, 10 to 15c; horse hides, 50c to \$1.

WOOL—Market nominal.

TALLOW—The local prices for tallow is 4 1/2 to 5c per pound.

SENNA ROOT—It is still a little on the market, but the price is falling here, but a few points regarding the markets elsewhere may be of interest. The New York, The Paint and Drug reporter comments as follows in its issue of Monday on the market there: "The market for senna root, aggregating about 200 lbs., sold at \$39.50. The market is firm at present." Another New York paper, The Price Current, says: "Senna is in better demand, chiefly for export." The market has marked up prices to \$39.50c."

LIVE STOCK.

CATTLE—Beef cattle are very scarce and butchers cannot secure enough to supply the wants of the city. Some of the fact prices have been advanced 1/2c this week, and we quote now for beef cattle, 7 1/2c per pound. From 4 to 4 1/2c is paid for common steers. Buyers are out through the country, seeking stockers and we understand that everything in sight is being taken at prices which average about \$12 per head for yearlings and from \$18 to \$20 for two-year-olds.

SHEEP—There is no movement at present as butchers are supplied with frozen mutton.

HOGS—The market is steady at 6c per pound for choice packing hogs, delivered at Winnipeg.

MILK COWS—There is a good demand for new milkers at from \$35 to \$45 each.

HORSES—There is a good demand for horses for spring work. Prices are high, and as much as \$550 is readily paid for a good team of work horses, the range being from \$300 to \$400.

New Fruit and Produce Company.

W. R. Watson, secretary for the new fruit company which is being organized by Winnipeg retail grocers, writes as follows to The Commercial:

At a meeting of the provisional directors of the United Fruit and Produce Company held last night, the new item concerning this company published in last week's issue of The Commercial came up for discussion, and I was requested to write you asking that some correction might be made. I may say that the party supplying the information on which the item is based can know very well of the facts of the case, as there are 45 of the leading retail grocers and butchers of this city who are stockholders in this concern, and you can easily look around from this and ascertain how many of the most important grocers are outside of it. If you were to call at my office here I am prepared to substantiate this statement by showing you the list of stockholders for your own satisfaction, and I am instructed to ask that you make this matter right in the next issue of The Commercial.

The following is the item from The Commercial of last week, to which Mr. Watson refers:

There is some talk of the retail grocers forming a company to import fruit in large quantities to the members of the fruit exchange. It is understood though that the bulk of the backing of some of the more important grocers. In that case it will not likely go ahead.

A special colonist excursion party from Eastern Canada, numbering 500 persons, arrived at Winnipeg on Thursday.

BANK CLEARINGS.

The following are some of the week's clearings as compiled by Bradstreet for the week ending March 20, with percentage of increase and decrease, as compared with the corresponding week last year. Montreal, \$18,040,000; increase, 33.4. Toronto, \$14,850,287; increase, 33.4. Winnipeg, \$2,277,445; increase, 38.8. Halifax, \$1,000,594; increase, 33.4. Vancouver, \$377,255; increase, 10.8. St. John, \$801,109; decrease, 1.5. St. John, \$82,900; decrease, 1.5. Victoria, \$414,940; decrease, 20.7. Quebec, \$1,210,000.

New York Money.

New York March 21.—Close—Prime mercantile paper, 4-2604 percent; sterling exchange, 100 to \$187 1/2 for demand and at 44 1/2 for 90 days; posted rates, 45c and 48 1/2; commercial bills, \$14,914, 7 1/2; bar silver, 54; Mexican dollars, 43 1/4. Government bonds steady; state bonds steady; railroad bonds irregular. Money on call firm. Actual transactions ranging from 4-1205 to 2 per cent; last loan 4 1/2 per cent; closing bid and asked, 4 1/2 to 1 1/2 per cent.

BRITISH LIVE STOCK MARKETS.

London, March 17.—The trade in cattle was active, and the tone of the market was easier, prices showing a decline of 1/2c, with choice Americans selling at 10s 10d.

Liverpool, March 17.—Choice Canadian cattle sold at 12c, and there were no sheep on the market.

CHICAGO LIVE STOCK.

Chicago, March 21.—Cattle week; good to prime steers, \$5.75-6.75; poor to medium, \$1.25-2.50; bulls and cows, \$2.50-4.00; cows, \$1.25-2.50; beefers, \$2.50-3.50; calves, \$1.25-2.50; hogs, \$4.00-5.00; Texas fed steers, \$6.00-7.00. Hogs—Strong; mixed and heavy, \$6 to \$6.50; good to choice heavy, \$6.00-6.50; 1-2; rough hogs, \$4.00-5.00; light, \$5.00-6.00; bulk of sales, \$1.50-2.00.

BRITISH STOCKS.

London, March 21.—4 p.m.—Consols for money, 103 1/2; 3 1/2 per cent, 103 1/2; Anacondo, 6 1/2; Atchison, 7 1/2; Atchison pfd., 100; B. and O., 109; C. P., 48 1/4; Chesapeake and Ohio, 47; Chicago Great Western, 55; Chicago, Milwaukee and St. Paul, 10 1/2; Denver and Rio Grande, 44 5/8; do. pfd., 94 1/4; Erie, 32 1/2; Louisville and Nashville, 100 1/2; Missouri, Kansas and Texas, 24 7/8; do. pfd., 36 1/2; New York Central, 67; Norfolk and Western, 48; do. pfd., 22 1/2; Ontario and Western, 33 1/2; Pennsylvania, 77 1/2; Reading, 35 1/2; St. Paul, 100 1/2; do. pfd., 102; 2nd pfd., 35 3/4; Southern Railway, 48 1/2; do. pfd., 48 1/2; Southern Pacific, 60 5/8; Union Pacific, 102 5/8; do. pfd., 89 1/2; United States St. R., 45 2 1/2; do. pfd., 80 7/8; Wash., 24 1/2; do. pfd., 14 1/4; Spanish Funds, 7 5/8; Rand Mines, 20 1/2; do. pfd., 7 5/8; Bar silver firm, 24 15-16 per ounce. Money, 2 1/2-2 3/4 per cent. Rate of discount in the open market for short bills, 2 1/2-3 1/4 per cent.; do. three months, 2 1/2-3 1/4.

Tenders.

R. Shrage, Winnipeg, is advertising for tenders for the erection of a residence for himself at Winnipeg.

Tenders will be received up to March 20 for the erection of a stone and brick residence on Edmonton street, Winnipeg, Jas. Chisholm, architect.

Tenders are called for a hospital building to be erected in connection with the immigration buildings, Winnipeg, to be by April 1. Plans at public works office, Winnipeg.

Tenders will be received up till 5 o'clock p. m. March 20th, for the erection of a brick and stone office building on Ponessa street, Winnipeg, for the Waterloo Engine Works Co., Limited.

Tenders for Indian supplies will be received up to noon on Monday, 14th April, for the Indian commissaries' supplies during the fiscal year ending 30th June, 1903, at various points in Manitoba and the Northwest Territories. Particulars from Indian commissioner, Winnipeg.

Movements of Business Men.

D. R. Dingwall, Jeweller, Winnipeg, left on Monday for his annual purchasing trip to London, Paris, Amsterdam and other European cities. J. T. Gordon, of Gardon, Ironside & Fares, accompanied by Mrs. Gordon, left this week to enjoy a three months' return in Europe.

C. R. Rowley, accountant of the Bank of Commerce, at Winnipeg, has been appointed accountant at Vancouver. Mr. Rowley has been in Winnipeg three years, and has in that time made many warm friends here. It is understood that his work at Vancouver will be of a special character in connection with the absorption of the business of the Bank of British Columbia.

This Week's London Fur Sales.

The continuation of C. M. Lampion & Co.'s fur sales in London, England, this week, resulted as follows:—

- Skins 25 per cent higher than last March.
- Red Fox 75 per cent higher than last March.
- Black Bear 15 per cent higher than last March.
- Black Bear, small, and sub-100 per cent higher than last March.
- Brown Bear 25 per cent higher than last March.
- Grizzly Bear 15 per cent higher than last March.
- Mink 10 per cent higher than last January.
- North 7 per cent higher than last March.
- Mink 20 per cent higher than last March.

London Wool Sales.

London, March 18.—The offerings at the wool auction sales to-day numbered 14,755 bales. All fine scoureds were in good demand at full prices and occasionally slightly higher rates were paid. Crossbreds and Merinos were very firm. Inferior stock sold less freely, and slightly in buyers favor. Americans purchased fine merinos and good greasy crossbreds at high rates. A fair supply of Fainting Archaes in good condition was offered, and the home trade secured practically all of it at firm rates. The present series will close on March 25. The opening of the third series of sales has been postponed until May 6. The lot will be closed on April 28, with a limit of 400,000 bales.

Late Western Business Items.

N. McDougall will open a tailor shop at Carberry, Man.

S. H. Goodrough, Jeweller, Dauphin, Man., has resigned.

The Territorial legislature was opened at Regina on Thursday.

H. C. Tuttleidge has sold his livery business at Neepawa, Man., to R. Hamilton.

Ston & Co. have opened a restaurant at 542 Main street, Winnipeg, which they have named the Bodega.

C. L. Meyers, late of McNeil & Meyers, has opened a tailoring establishment at 270 Fort street, Winnipeg.

G. S. Haslam, clothing and boots and shoes, Carberry, Man., is advertising a clearing sale with the intention of giving up business.

The grocery stock and fixtures of C. McDonald, 525 Main street, Winnipeg, were sold by the assignee on Friday to R. B. Vint, for 54c on the dollar.

The stock of pictures, mouldings, etc., of J. G. Soper, Winnipeg, amounting to \$490, will be sold at a rate on the dollar, by auction, on March 27.

Voting took place at Regina, Assn., yesterday on a by-law to authorize the town council to raise \$10,000 on twenty year debentures for the purpose of street improvements. The by-law was carried.

The offices at Winnipeg of the Canadian Pacific Railway freight department were completely destroyed by fire last night. The loss will be in the neighborhood of \$7,000, and is fully covered by insurance. The freight shed adjoining, packed with shipments of spring goods, was fortunately saved.

The tender submitted by the Dickson Co. of Chicago, manufacturers of the Alpha cement, has been accepted by the Winnipeg board of works. Their tender was the lowest, being 69 1/2 per one hundred pounds. The quantity to be purchased has not been decided on, but will not be far short of 15,000 barrels.

WATER
WITH OUR BACK FACED STONE
IT COSTS VERY LITTLE
It is a steel siding, either galvanized or painted—in great demand for new structures as well as for improving old ones. It can be readily applied, makes a most attractive looking finish, and also gives fire, cold and damp-proof protection. Fullest information, if you write.
The Metallic Roofing Co., LIMITED
TORONTO, Canada.
THOS. BLACK, Selling Agent, 131 Bannatyne Ave. WINNIPEG.

Toronto Wholesale Trade.

Special to the Commercial. Toronto, March 22. Dry Goods—Cottons and printed lines are in good demand...

Hogs and Hog Products.

Special to the Commercial. Toronto, March 22. Hog products are in good demand as Lent is now nearly over...

Toronto Grain and Produce.

Special to the Commercial. Toronto, March 22. Grain markets are quiet. Wheat is easier. No. 1 spring 3c lower...

Montreal Grain and Produce.

Special to the Commercial. Montreal, March 22. Butter is in good demand. The quality of dairy still high and prices for choice are firm...

Montreal Live Stock Market.

Special to the Commercial. Montreal, March 18. At the East End abattoir on Monday afternoon the following fat stock...

THURSDAY'S MARKETS

Montreal, March 21. Receipts at the East End abattoir yesterday were 300 cattle...

Toronto Live Stock Market.

Special to the Commercial. Toronto, March 19. Receipts at the stock market yesterday were 110 cattle, including 2 1/2 cart, 307 sheep and lambs...

Hogs—Were steady, selling at 86 per cwt. for choice ones and \$5.75 per cwt for lights and fats.

FRIDAY'S MARKETS.

Toronto, March 22. Receipts at the stock market yesterday were 40 cars, including 800 cattle, 500 sheep and lambs and 1,500 hogs...

Chicago Board of Trade Prices.

Chicago, March 17.—Wheat opened today at 75c for May option, and ranged from 74 1/2c to 76c...

New York Wheat.

New York, March 17.—May wheat closed at 82c and July at 80 1/2c.

St. Louis—Mississippi Wheat.

St. Louis, March 17.—May wheat closed at 72c and July at 70c.

Duluth Wheat.

Duluth, March 17.—May wheat closed at 78c and July at 76c.

Liverpool Wheat.

Liverpool, March 22.—Closing wheat—Spot, quiet; No. 2 red winter wheat...

Winnipeg Closing Wheat.

No. 1 hard cash wheat closed Saturday at 72 1/2c; No. 1 northern at 70c...

LIVERPOOL CHEESE MARKET.

Special to the Commercial. Liverpool, 3rd September. Finest Canadian condensed...

LONDON SUGAR MARKET.

Special to the Commercial. London, March 21. March option unchanged, at 6 3/4d.

LIVERPOOL CATTLE MARKET.

Special to the Commercial. Liverpool, March 21. Canadian cattle quoted firmer at 12 1/2 to 13 1/2c per pound...

Page Acme Poultry Netting

is enclosed mesh at bottom and does not require rail for support at top...

"Crescent" Steel Ware

Our other brands of Enamelled Ware: "Premier," "Colonial," White, Blue and White "Star" Decorated.

The Thos. Davidson Manufacturing Co., Ltd. MONTREAL

The British Columbia Mills Timber and Trading Co.

MANUFACTURERS OF

FIR AND CEDAR LUMBER

SHINGLES, DOORS, WINDOWS, ETC.

Winnipeg Office: JAMES A. OVAS, Manager

HEAD OFFICE: VANCOUVER, B. C.

HEAD OFFICE: VANCOUVER, B. C.

HEAD OFFICE: VANCOUVER, B. C.

HEAD OFFICE: VANCOUVER, B. C.



Kola Tonic Wine

Made from
Kola, Celery
and Pepsin

The Kola nut is grown in the Western Territories of Africa, and is not likely to remain much longer in obscurity, if the properties, which on good authority it is said to possess are found to be as stated from information communicated to the Fife Agricultural Association, by Sir Thos. B. Thurston and Mr. Thos. Christy, F. C. S., who have proven that Kola feeds the muscular system and prevents a rapid waste of tissues. The British Government have been making experiments with the pure paste of the Kola nut in order to ascertain how far it would meet the difficulty of transporting provisions in time of war as a concentrated sustainer of human life. Mr. Christy strongly advises planters to grow it more extensively, as it is sure to rise to more importance when its properties become better known; the usefulness of Kola in hot climates when water frequently contains the germs of various diseases, should be great, as a small quantity added purifies and changes foul water that would be dangerous to drink unless it were first boiled or treated in this way.

Dr. Nachtigall, from personal experience, gives some interesting information regarding Kola. He states it has a marvellous effect when taken into the human system; it is agreeable, stimulating and nourishing. In some places where Kola happens to be scarce, such value is set upon it that for the dry powder of the nut an equal weight of gold dust is given in exchange. This wonderful nut has risen into such request as a medicine

that for the public good the authorities are investigating its many properties, and there is a satisfaction in knowing the same is being done in this country and elsewhere; and evidence has been already collected to prove that Kola has an extraordinary influence in counteracting the effects of alcohol, and that it acts as a powerful Tonic in cases where the digestive organs are defective; that it purifies foul water, and that it sustains hard workers with very little food.

The Kola Tree grows to a height of 20 or 30 feet; two crops are obtained in the year: In June and November. Medical men prescribe the Kola before meals to people who have reason to feel anxious about the state of their Liver and Kidneys. As a Medicine, Kola will (undoubtedly) take an important place in the future. It seems admirably suited to the case of invalids who require something strengthening without having an appetite to taste food.

Kola Tonic Wine is manufactured from Kola, Celery and Pepsin, and in this combination the Hygiene Kola Co. have accomplished a scientific triumph, because it has been proven that not only diseases of almost every kind give way to its healing properties, but it puts the system into such a condition of perfect healthfulness that it is a practical proof against all diseases. Indigestion, Dyspepsia, Asthma, Rheumatism, and all nervous troubles are cured by using Kola Tonic Wine; thousands have been cured when all other remedies have failed. To enjoy good health, keep your stomach right and the use of Kola Tonic Wine will do that. Physicians all state that Kola, Celery and Pepsin is the best combination of any remedy ever offered for sale.

Beware of imitations; see that our address is printed on each bottle. Sold by all the leading druggists in Canada and the United States.

HYGIENE KOLA COMPANY

84 Church Street, Toronto.

206 Pacific Avenue, Winnipeg

Sole proprietors for the Dominion of Canada.

P. D. ROE, President.

R. ABERNETHY, Vice-President.

T. F. PATERSON, Sec. Treas.

The Canadian Pacific

Lumber Company Limited

MANAGER
PORT MOODY, B. C.

CAPACITY: LUMBER—60,000 feet per Day; LATH—20,000; SHINGLES—120,000.

We have the largest dry kiln capacity of any mill in B. C.; also the largest amount of sheds, and these are well stocked with Manitoba lumber. We have better planers and are prepared to ship promptly. We understand the requirements of Manitoba dealers. Send to us for your next car. HENRY BYRNES, Selling Agent, Winnipeg.

THE RIGHT PLACE

To advertise business for sale, partners wanted, ten per cent. wanted, etc., is in The Commercial. It reaches the people you want to get at.

WANTED.

Partnership in an established mercantile business, wholesale preference. Investment up to \$20,000. Address: F. W. M. B. care The Commercial.

WANTED TO BUY.

Butcher Business in Western Alberta or Alberta District, give full particulars when writing. I have a good farm for sale, one mile from town; that I will sell or trade for cattle. Butcher shop for sale. For further particulars apply to N. A. Welch, Dauphin, Manitoba.

WANTED.

To purchase, at rate on gold, general store business, Stock \$15,000 to \$20,000. Address Box 893, care The Commercial.

FLOUR MILL WANTED.

A liberal bonus is offered for the erection of a 100 bush flour mill and 200 bush elevator at Alameda, Alaska. Apply to J. W. Wilcox, Alameda, Ala.

SITUATION WANTED.

SITUATION WANTED as salesman in general store. Two years experience in dry goods, six years in groceries; give class references furnished. B. Shepard, Dauphin, Man.

FOR SALE.

An up-to-date General Store in the Hazel Cliffe and Valley View districts, none better; stock \$2,000.00; well assorted and new. Prospects bright. Apply to Meander & Co., Hazel Cliffe P. O. A.S.S.A.

WANTED.

Someone with one thousand cash to go shares with me in bringing West of horses to Manitoba. Market already in sight for all we can sell. Address Broncho, care of The Commercial.

Employment

Is any the question for any man. You can make money selling our coats. The assortment of fruit and other goods for fall or spring delivery. Write for terms. Address—The Jewel Murrey Co., Lisle City, Minn. (Established 1858. One thousand acres)



Our traveller is leaving on his regular Spring trip and will shortly call on you. Kindly save him your order orders.

The Hoover Mfg. Co. Ltd

Maw's Block, cor. King and William (opposite Leland Hotel), Winnipeg.

The commissioner of the Northwest Mounted Police is asking parliament for an addition of 50 men to the force. The present strength is 500 men in the Territories, and 200 in the Yukon country. He also asks for a small steamer to be placed on the Mackenzie River, which could be used for visiting the resorts of the United States whaling fleet, which operate upon the northern coast of Canada. It is charged that these whalers are tyrannizing the Indians and Eskimo of that region, debauching the women, and indulging in all sorts of lawlessness, besides trading illegally.

ESTABLISHED 1874 20 YEARS' EXPERIENCE

**CARRUTHERS, BROCK,
JOHNSTON & DRY**

Insurance,
Financial,
Real Estate
Agents

ESTATES MANAGED
MONEY INVESTED

1. & J. TAYLOR SAFES AND VAULT
DOORS.

481 MAIN STREET - WINNIPEG

JOHN W. PECK & CO.
MONTREAL BRANCH
HARDUVER

Manufacturers of
**Clothing
Furs
Shirts**

Dealers in
**Men's Furnishings,
Hats, Caps**

SEEDS

Merchants for 1902

Steele-Briggs Seeds

They have the four points for success in your seed business, viz.:

- 1st Always Reliable.
- 2nd Most Widely Advertised.
- 3rd Most Attractively Got Up.
- 4th Give a Good Round Profit.

See our big daily and weekly "ads." They don't forget the merchant. Please return the compliment by pushing our seeds, whenever possible, from box of catalogue.

We handle all seeds in all quantities, and cheerfully answer any written or wire enquiries.

THE STEELE-BRIGGS SEED CO. LTD.
Toronto

SEEDS SEEDS

The Northwest Seed and Trading Co. Ltd., have opened with a complete stock of

**Fresh Garden, Field
and Flower Seeds**

Stock selected with a special view to the requirements of this market, our Mr. Chester having had over 20 years experience in the seed trade here.

NORTHWEST SEED & TRADING CO., LTD.
805 Main St. Winnipeg.

PLEASE NOTIFY.
Subscribers to The Commercial are requested to notify the office of any irregularity in the receipt of their paper.

BICYCLES FOR 1902

Cleveland Brantford Massey-Harris
PERFECT



If you have not secured an agency for one of the above lines write us to-day and add a Bicycle Department to your business. The Profits are Satisfactory and Sure.

CANADA CYCLE & MOTOR CO. Ltd., Winnipeg
BICYCLES AND ACCESSORIES

W. R. TALBOT & CO. Spring Lines

239 PORTAGE AVENUE.
DEALERS IN

**Wall Papers
Pictures and
Frames**

All orders, either from the country or city, receive our most careful attention.

Now in stock, a full range of Spring Goods, Clothing, Furnishings, Small-wares, Fancy Goods, etc. We call attention especially to our RUBBER COATS, which are of good quality and marked low.
Mail orders will receive prompt attention.

EASTERN CLOTHING HOUSE
J. GENSER, Prop.
223 Alexander Ave. Winnipeg.



"What we have we'll hold"
As every man who has purchased Page Fencing knows he has the best Fence on the market.

"What we haven't we're after"
and if you are in the market for fencing we would like to have you consider the merits of the "Page" Fence - Galvald Wire, made in our own Wire Mill, woven by ourselves. Shipped already to put up.

The PAGE WIRE FENCE CO. (Ltd.)
WALKERVILLE, ONT.

ROSS & ROSS,
General Agents, Winnipeg.


"5 in 1"

You are requested to call or send for samples of the "5 IN 1" LETTER ENVELOPE. SAVES LABOR, TIME AND EXPENSE. Used extensively by all Banks, Merchants, etc. throughout the Dominion. Used in the city by the PROVINCIAL GOVERNMENT, Alloway & Champion, A. J. Brown & Co., Forrester & Hatcher, E. Knight & Co., G. F. Stablerford, Dr. Leeming, Dr. English, Winnipeg Coal Co., and a host of others.

"5 in 1" LETTER ENVELOPE CO
TORONTO.

Manager for Winnipeg.
LEWIS SAMUELS,
Telephone 1121. 201 Main St.

Fishing For Your Trade



The bait we use is GOOD CIGARS always up to the standard—pure stock—well made. Our leading brands are:

"FLOR DE TOM LEE" The "T. L."
"MAGNIFICOS" "ROSA LINDA"
"LEE'S PREMIER" "THE GORDON"

All good dealers sell them—particular men smoke them.
"THEY BRING HAVANA HOME TO YOU."

WESTERN CIGAR FACTORY
WINNIPEG
T. LEE, Prop.



For School Purposes

we offer the trade a new line of Globes, Maps, Blackboard Cloth and Slating. Music Charts, Numerical Frames. Call and Table Bells, Crayons, &c.

For School Books, Scribblers and everything for scholars' use, try

THE CONSOLIDATED STATIONERY CO. Ltd.
McDERMOTT AVENUE, WINNIPEG

D. S. PERRIN & COMPANY Limited BISCUITS AND CONFECTIONERY

Winnipeg Branch—327 Notre Dame Avenue.

Write for Quotations.

MANUFACTURERS OF

LONDON

CANADA

YOU'LL SEE THEM IN OUR 1902 SAMPLES

CANVAS BACK

Our new line of Boston Rubbers, made specially for us according to our own ideas of what the trade of Manitoba wants. You'll see nothing at all like them elsewhere and you'll buy them ON SIGHT.

GOOD BUYING DOES THE WORK

A clean saving of 2½ per cent and an absolute and unquestionable guarantee of wear are the best arguments to submit to the shrewd buyer. No other Company can guarantee their rubbers, nor can they give as much discount as Boston's. Our new samples are the brightest, most attractive and most progressive line on the road. Buy the only guaranteed rubbers now made in Canada. BUY BOSTON'S.

ARTHUR CONGDON WINNIPEG

TO THE HARDWARE TRADE

WE wish to announce to our numerous customers and the trade generally that we have a large stock of goods of our own manufacture in our warehouse in Winnipeg, among which are the following:



Hammers of all kinds and sizes,
Hatchets, Ware's Steel Yoke Vices
all sizes, Lawn Mowers, Mrs. Potts
Sad Irons, Grind Stone Fixtures,
Cistern and Force Pumps, Arcade
Spring Hinges.

Royal Canadian Wringers
Royal American Wringers
Royal Dominion Wringers
Gem Bench Wringers

WRITE FOR PRICES.
We make these goods.
Letter orders promptly attended to.

THE JAMES SMART MFG. CO.

244 PRINCESS ST., WINNIPEG

W. H. MCGUIRE, Manager

N.B.—We keep a full line of "Kelsey's" in stock as well. If interested in heating write us.

J. M. PERKINS

WHOLESALE.

SEEDS
SEED DRILLS
ONION SETS

Commission Seed Boxes. Trade List
Now Ready.

221 MARKET STREET, WINNIPEG, MAN.

PATENTS TRADE MARKS AND DESIGNS

PROCURD IN ALL COUNTRIES
SPECIAL ATTENTION GIVEN TO PATENT LITIGATION
PAINFULLY SENT FREE ON APPLICATION
103 BAY STREET,
RIDOUT & MAYBEE, TORONTO

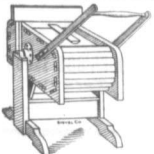


Sealed Tenders, addressed to the undersigned, and endorsed, "Tenders for Hospital, Immigrant Building, Winnipeg Man." will be received at this office until Monday, April 14th, inclusively, for the construction of a hospital for the Immigrant Building, at Winnipeg. Plans and specifications can be seen, and form of tender obtained at the Department, and at the office of Mr. Joseph Ernest Cyr, Public Works Office, Winnipeg, Man.

Persons tendering are notified that tenders will not be considered unless made on the form supplied, and signed with their actual signatures.
Each tender must be accompanied by an accepted cheque on a chartered bank made payable to the order of the Honorable the Minister of Public Works equal to ten per cent (10 p.c.) of the amount of the tender, which will be forfeited if the party declines to enter into a contract when called upon to do so, or if he fails to complete the work contracted for. If the tender has not accepted the cheque will be returned.
The department does not bind itself to accept the lowest or any tender.
By order,

FRED. GELINAR

Secretary
Department of Public Works,
Ottawa, March 12th, 1902.
Newspapers inserting this advertisement without authority from the Department will not be paid for it.



MERCHANTS

Why not sell the cheapest and best Washers. You know the price of the Home Washer is \$13. Washes clean at one time in 15 minutes a quantity of clothes equal to about eight shirts or three sheets and require a boiler or full of suds. Now I am prepared to give you the McCrossan Rocker that will clean at one time a quantity of clothes equal to ten shirts or four bags with half a boiler full of suds and in less time, and if I cannot clean the clothes as well as any \$10 washer that is in use, I will pay one hundred dollars for the test, which will be in Winnipeg. The price has been sent to the old country to friends there, which I am prepared to improve. My machines now clean nearly the same quantity and it is only \$10. The Improved Macintosh, my best, 10 shirt size, is \$10; 20 shirt size, \$12; 30 shirt size, \$15; 40 shirt size, \$18; 50 shirt size, \$22; 60 shirt size, \$25. All good. T. McROSSAN, 256 Bannatyne St., Winnipeg.

TREES

THAT

GROW

WRITE AT ONCE FOR SPRING 1902 CATALOGUE

DO NOT ORDER FROM OLD EDITIONS

Fruit trees, small fruits, evergreens and deciduous shrubstock, ornamental trees, shrubs and plants, house plants and foliage plants for the lawn—We offer in these lines the most complete assortment in the west. And remember that we have been testing varieties here in Minnesota for over 30 years and catalogue only those that are best adapted to Northern culture.

SPECIALTIES—Okabeena apple, Loyal's Prolific crab apple, Aitkin and Burry's plums, Canada cherry, North Star Currant, Red Jack-et gooseberry.

THE JEWELL NURSERY CO., Lake City, Minn.

Established 1869. 1,000 Acres. Capital \$100,000.

WINNIPEG PRICES CURRENT

GROCERIES.

Prices to retail dealers for ordinary quantities, cash accounts for cash or by note.

Table listing various grocery items such as Canned Goods, Flour, Sugar, and other foodstuffs with their respective prices.

Table listing various grocery items including Matches, Nuts, Syrup, Soap, and other household goods with their prices.

Table listing various grocery items including Golden Plug, Royal Oak, Something Good, and other specialty products with their prices.

Some Horse Nail Pointers:

The 'C' brand horse nails are not the lowest priced, but they are the cheapest—that is if you will take quality, pattern and durability into consideration. It is an accepted truth which has found expression in the saying 'the best are the cheapest.' To assert that the 'C' brand Nails are the best is only to repeat the experience of the hardware trade and farmers who have bought and used them for the past thirty-seven years. They are the Standard Horse Nails of Canada, because they are the best. No other Horse Nails made in Canada have ever been sold at a better price than the 'C' brand. Why? Because there were none better. If you want the best article, either Horse Nails or anything else, you have to pay a price corresponding to its value. The best cost the most to produce. Our 'C' brand costs more to make, because we do not admit anything of a cheap nature into their composition, or the process of manufacture. The best material that is known or used in the world for the manufacture of Horse Nails forms the basis of the 'C' brand. The 'hot-forged' hammered process is the only one we use, because it thoroughly hammers a Nail from the solid rod or bar of Swedish charcoal-toughened steel, which we use exclusively, and is made specially for our works in Canada. If other brands were sold at even twenty-five cents a box lower than our 'C' brand, it would only reduce the cost of the 32 nails used in shoeing a horse—one cent. There is no economy in using cheap Nails. Order the 'C' brand and satisfy yourselves and your customers. All the leading wholesale firms in Winnipeg have their sale or will obtain them for you; if not, send your orders direct.

Canada Horse Nail Company MONTREAL TODD HUNTER, MITCHELL & CO. Importers and Manufacturers

High Grade Coffees High Grade Spices 'Most Excellent' Cocos 'Most Excellent' Chocolate Baking Powders Flavouring Extracts, Etc. TORONTO MONTREAL

The Mutual Life of Canada

32nd ANNUAL MEETING

The Company Solid and Progressive—Another Year of Substantial Gains.

The Thirty-second Annual Meeting of this popular and prosperous life company took place at its Head Office, Waterloo, Ont., on Thursday, March 6th, 1902, at 1 p.m. The Company's spacious Board room was well filled with policy-holders, who evinced deep interest in the proceedings, which were throughout both harmonious and instructive. The President having taken the chair, on motion, Mr. W. H. Riddell, Secretary of the Company, acted as Secretary of the meeting, and at the request of the President read the

DIRECTORS' REPORT.

Your Directors submit for your consideration and approval their report, with financial statement for the year ending Dec. 31st, 1901.

New Business

They are pleased to inform you that the business of the year in all respects has been of the most satisfactory character, enabling them to make the same liberal distribution of surplus to policyholders as in the past. The volume and character of new business were all that could be desired, the death rate was much below the expectation, and the lapses and surrenders, in proportion to business in force, very moderate. Amount of applications for new assurance received was \$1,403,000; accepted and policies issued \$1,071,929, all of which with the exception of \$36,500 was secured in Canada.

Canada First

The Board of Directors have not seen any reason why they should depart from the rule hitherto followed of confining their operations to our own country and Newfoundland.

Insurance in Force

The number of policies in force was 21,785, assuring \$31,718,031, the reserve on which, based on our own standard, Actuaries 4 per cent., on all business previous to 1900, and 3½ per cent. on all business since then, is \$5,201,100.41.

Assets and Income

The cash assets are \$5,439,541.65, and the total assets \$5,757,822.17. The surplus on Government standard, over all liabilities, is \$645,470.09; on the Company's standard \$579,970.53. The net premium income was \$908,619.98; interest and rent \$558,817.02; annuity premiums \$23,250; total income \$1,577,086.08.

Paid to Policyholders

The amount paid to policyholders was \$408,532.45, of which sum \$305,021.95 was paid to living policyholders. The Death Claims paid were \$188,510.50; Matured Endowments \$163,480; Purchased Policies \$2,625.37; Surplus \$82,255.51; Annuities \$4,703.07.

Investments

During the year the demand for money has been active, and the funds of the Company have been fully employed. The rate of interest has been good, and payments on both instalments and interest have been promptly met, the interest overdue being much less than in any former year.

The Manager, officers and staff continue to discharge their duties to the entire satisfaction of the Board, and in the best interests of the Company.

The Executive Committee have carefully examined all the Securities, and compared them with the entries in the ledger, and found them to correspond therewith.

You will be called upon to elect four Directors in place of Right Hon. Sir Wilfrid Laurier, Alfred Hoskin, K.C., E. P. Clement and Hon. J. T. Garrow, whose term has expired, all of whom are eligible for re-election.

Waterloo, March 6th, 1902.

ROBERT MELVIN, President.

ABSTRACT FOR ACCOUNTS FOR 1901.

INCOME.	
Premiums, Net	\$ 908,619 06
Interest, Rent and Annuities	279,067 02
Total	\$1,177,686 08
DISBURSEMENTS.	
Death Claims, Endowments, Profits, etc.	\$ 408,532 45
All other Payments	215,076 94
Total	\$ 623,609 39
ASSETS.	
Loans on Fire, Mortgages and Bonds	\$2,650,566 61
Municipal Debentures and Bonds	2,012,449 03
Loans on Company's Policies	643,261 93
Real Estate, including Company's Office	123,729 01
Cash in hand and in Banks	14,312 25
Other Assets	315,403 34
Total	\$5,757,822 17
LIABILITIES.	
Reserve, 4 and 3½ per cent.	\$5,201,100 41
All other Liabilities	76,751 23
Total	\$5,277,851 64
SURPLUS.	
On the Company's Standard, 4 and 3½ per cent.	\$ 370,970 53
On the Government's Standard, 4 and 3½ per cent.	\$ 605,470 00

PRESIDENT'S ADDRESS.

In moving the adoption of the Report, Mr. Melvin said: Allow me to express to you the very great pleasure it gives me to meet you again, and to be able to place before you for your consideration a statement of the last year's business which is so eminently satisfactory in every respect; for whilst the new business was a little less than last year, it was quite up to our expectations, and beyond the amount, I believe, issued by the majority of other Canadian Companies in Canada. The statement shows steady progress in all that denotes strength and stability, while the rate of expense to income was the lowest in our history, viz. 10.88 per cent. or 0.57 per cent. less than the previous year.

We added to our business in 1901 \$2,100,000, and during the past five years the large amount of \$11,716,969, considerably over half of the total amount in force, a very gratifying increase indeed, which says much for the quality of the business done by our agency staff, for which they will please accept the hearty thanks of the Directors.

During the year we paid to policy-holders in surplus the sum of \$2,255.51, and during the past five years the large amount of \$98,527.64. During the same period we increased the surplus on hand from \$231,417.05 to \$370,970.53. This surplus is ascertained on the Combined Experience 4 per cent. Table for business in force previous to 1900 and 3½ per cent. Table on all new business since then. If we were to base our reserve on the present standard allowed by the Government, it is 4½ per cent. on all business, a stand which that some Companies still use, the Surplus would be \$93,107.00. And if that some Companies still use, the Surplus would be \$93,107.00.

The mortality for the year amounted to \$208,471, being much below the expectations for the year, and below the previous year, notwithstanding the increased business in force.

The interest and rents on our investments exceeded the amount paid for claims in 1901 to \$67,074.00, and in the past five years by the large sum of \$185,008.16. For this we are, no doubt, indebted to a large measure to Dr. Webb, our Medical Director, who has always been most careful in his selection of risks, and also to our medical examiners.

The large sum of \$305,021.95 was paid to living policy-holders during the year; the total amount paid to all classes of policy-holders or their representatives in 1901 was \$408,532.45, and in the past five years \$1,991,727.36. The amount paid to living policy-holders largely accounted for by the very large surplus paid to policy-holders and the increasing tendency for many years past towards endowment assurances as a provision for old age, instead of, as formerly by policies upon the whole life plan, which at one time were more in favor.

At the Annual Meeting on May 20th, 1898, in referring to the reserve and surplus, I used these words: "It may be that in the near future we may require a 3½ or even a 3 per cent. reserve, which some of the British companies have already adopted, and the death rate is a certain and fixed quantity, while the rate of interest, or value of money, is very unstable, but always with a downward tendency. This being the case, which is the more probable, we regard it as being bound to make ample provision in our reserve for payment to the policy-holders of the uttermost farthing of the obligations we have incurred." The result of the year, and the way in which we were then, as the Government in the following year, seeing the necessity for increasing the reserve in consequence of the steadily increasing rate of interest, and the making it compulsory for all new business after the 1st of January, 1900, to be on the higher basis of 3½ per cent., while all business issued prior to 1900 may remain on a 4 per cent. basis, until 1910, but from 1910 to 1915 4 per cent. must be assumed, and after 1915 all business must be placed upon a 3½ per cent. basis. It is true that we have yet some time to reach the higher standard, and it may be asked, why provide the additional reserve so long before the Government requires it? I answer that it is not only our duty to comply as soon as possible with the requirements of the Act, if it is to give added strength and stability to the Company, but to anticipate it, as was done previously with the best results. In 1865, long before the Government asked a higher reserve, our Company voluntarily raised the reserve from 4½ to 4 per cent. The wisdom of this is now apparent, as we can come to the 3½ reserve within a very short period, if our surplus continues to increase as it is now doing, the Government requires it, if any, with our present liberal scale of surplus distribution.

In conclusion, I will briefly recapitulate some additions and gains for the year. Our income amounted to \$1,177,686.08, and our gain in assurance \$2,100,000.00, in assets \$575,807.00. In gains \$463,397.63, in surplus \$69,620.63, and last, but not the least gratifying feature, the expense incurred in the year was \$623,609.39, or 57 per cent. to March 1st our death rate was much less than it was for the same period last year, and the new business exceeds that of last year at all the material points. It is, therefore, most gratifying if Directors, agents, the staff and the policy-holders do their duty, the year upon which we have now entered may be still more successful than the one just past?

VICE-PRESIDENT'S ADDRESS.

Speaking in support of the motion, Mr. A. Hoskin, K.C., First Vice-President, said: The President has spoken in a very able and excellent address fully delivered, but little else to be said for me to say. However, I may be permitted to take up a few minutes of your time in referring to a matter not enlarged upon by him. In this, as in all insurance companies, the investment of the assets of the company is of vital importance, both as regards the safety as well as the earning power. The Directors of your Company have paid both anxious and constant attention to this matter, and the President, in addition, has given a great deal of his time and thought to this part of the business, and I venture to say, with considerable success. At the end of 1900 the total amount invested was \$5,085,000 on securities representing over \$5,000,000, and of this amount over two thousand two hundred dollars have since been paid. The major part of the Company's investments are in mortgages, endowments and mortgages, and it is of great interest to the members to know how these investments are distributed. The amount invested on farm property is \$1,000,482.40, upon city property \$1,083,584.13. In Manitoba there are \$150,574 invested on

farm and \$178,815 upon city properties. The debentures are distributed as follows:

	Account Value.	Par Value.
Cities	\$ 375,700 87	\$ 375,741 87
Towns	1,184,380 51	1,140,730 83
Villages	138,042 96	134,255 96
Townships	34,955 80	33,576 80
Schools	68,390 21	65,245 02
Miscellaneous	200,000 07	192,000 00

\$2,012,488 03 \$1,944,758 95

The average rate of interest realized by the Company during the past year was nearly 5 per cent. I think it well to refer to another matter which the members at large may not be aware of, which may show their interests are safeguarded. The Executive Committee meet once a month, and among other duties pass upon every payment made on behalf of the Company; every item disbursed is audited and no item allowed to pass unless it has been expended solely for the business of the Company. The same Committee once a year go through all the securities of the Company. They take up the investments made during the past year. The mortgage is proposed and is compared with the application and the Minute Book of the Company to see if the land embraced in the mortgage is the same as that upon which it was agreed to lend, that the amount mentioned in the mortgage, the terms of payment and rate of interest, and the parties agree with the application and the Minute Book. Also the mortgage is examined to see that it is properly signed by the parties and properly registered. The Mortgage Ledger is also examined to see if all these particulars are entered in it. If all is found to be correct then some member of the Committee puts his initials upon the mortgage so that on its production at any future time and the initials being found there, the Committee know that the above investigation has been made. In addition to this, once a year the mortgages and mortgages at home go over with the Mortgage Ledger and Auditors' detailed statements. Each security is produced and handled by the Committee, the Mortgage Ledger is compared with the Auditors' list and statement to see if they agree as to the amounts still unpaid. Each mortgage account is looked at to see if it is in arrears, and for what length of time. By these means the Board endeavor to keep a check upon the investments of the Company.

I would like to be permitted to make a few remarks personal to myself. I have now been a member of the Board for twenty-one years and can say I have "come of age." I am proud to have been for such a length of time a member of such a prosperous and reliable institution, and in a manner to have "grown up" with the Company. I have grown since I became a Director, the present assets exceed by \$1,500,000 the total insurance in existence when I joined the Company, and the present annual income of the Company is \$1,000,000 more than the total assets of the Company at that time. I hope those who will be here twenty-one years hence will find, as I venture to predict they will, that there has been as great if not a greater progress. The Honorable Mr. Justice Britton, and Messrs. Bruce, Clement, Somerville and Kidd, Manager Wegeman, Messrs. Earl, Burrows, Siggell, Linton, Stewart, Mills, Mulr, Scripture, Ormsby, Chalmers, Dr. Webb and others, having spoken, the retiring Directors having been re-elected, the meeting adjourned. The Directors met subsequently and re-elected Mr. Robert Melvin President, Mr. Alfred Hoekin, K. C., First Vice-President, and the Hon. Mr. Britton, Second Vice-President of the Company for the ensuing year.

What We Want.

Strathcona Plaindealer. Strathcona wants every industry in the district can support. Sheep are well here and there is an immense demand for woolen goods by far here of the north. We have abundance of good pure water and fuel, hence a woolen mill should be a good investment here. Immense quantities of wood suitable for pulp are growing. Demand for paper throughout the west should make a pulp and paper mill a profitable enterprise. The numerous butcher shops and packing houses in and about Strathcona with the rapidly increasing population supply the raw material and market for a soap factory. The best soap is made here and is tested in this vicinity and is found to bear a very satisfactory result. From 14 to 15 per cent. notwithstanding the season was available. Further experiments will be made this year. Abundance of rich and a compact settlement about which to bear with the prospect of a domestic center making it a good point for the location of a sugar factory. A wholesale grocery business should be established here should do well. Our shipping lines, including a jobbers' local business, give us an advantage over other points in the district for the location of wholesale trade in any line. A large number of warehouses owned by a wholesale produce merchant doing business with British Columbia should be established. The supply of butter, eggs, poultry, fresh meats and vegetables here is abundant. The demand for these commodities there is immense but the business is hampered by the lack of best facilities for storage at this point of shipment. There is still an abundance of gold dust in the Sasheewan awaiting the operation of

experienced dredge miners. The dredging rights of the river bed are let to several big corporations having dredges of 2,000 yards capacity now on the river and others in prospect, but the bars above low water mark, which have in the past paid the grizzly miner well are still available. There is a great dearth of houses for rent in Strathcona; real estate will never be bought cheaper than it can be now and investment in lots and houses to let would be money laid out safely spent. These are a few good openings. The man with money to invest will find many other equally as good.

Lake and Rail Rates.

St. Paul, Minn., March 13.—One of the most important freight meetings from a northwestern standpoint (this season, has just completed its session. At this meeting lake and rail rates on export and domestic flour and products incidental thereto, were determined upon. The flour rate was cut three cents from the tariff in effect when the season of 1901 opened. This season the lake and rail rate on domestic flour will be 22 cents to the seaboard, and 19½ cents on the export business. These rates are three cents under the agreed all rail rate, the recognized differential allowed the lake carriers. These new tariffs will take effect on April 1.

The Western Canada Fish Company, Limited, has been incorporated in British Columbia with a capital of \$100,000, for the purpose of entering into the fish curing business.

Mr. Martin of the Northern Elevator Co., Winnipeg, has returned from a visit to Scotland and England. Mr. Martin says that there is a belief across the water that a tax may be placed on foreign wheat. He reports times good with the Scotch farmers.

LEADING COMMERCIAL HOTELS

- WINNIPEG**
HOTEL LELAND.
 Headquarters for commercial men.
 CITY HALL SQUARE.
- DRYDEN, ONT.**
DRYDEN HOTEL.
 A. R. HUTCHINSON, Prop.
 Headquarters for commercial and mining men and the general public.
- RAPID CITY.**
QUEEN'S HOTEL.
 THOS. EVOY, Prop.
 Headquarters for commercial travellers. Free bus meets all trains.
- BIRTLB**
ROSSIN HOUSE.
 B. FENWICK, Prop.
 Good accommodation; telephone connection with the station; ample rooms; inside closet. Livery in connection.
- TREHERNE**
LELAND HOTEL.
 W. F. LEE, Prop.
 First-class accommodation for commercial travellers.
- GLENBORO**
QUEEN'S HOTEL.
 M. E. NEVINS, Prop.
 Best hotel on the Glenboro branch. Three large and first-class sample rooms.
- NAPINKA**
HOTEL LELAND.
 B. HALLONQUIST, Prop.
 First-class in every department. Sample rooms. Every convenience for the travelling public. Opposite C. P. R. depot.
- DELORAINE**
PALACE HOTEL.
 LAIRD & MCGARVEY, Props.
 New building, new furnishings, furnace heating, acetylene gas. First-class. Large sample rooms.
- MACCROGREG, MAN.**
THE STANLEY HOUSE.
 E. WATSON, Prop.
 First-class accommodation for travellers. Commodious sample rooms. Livery and feed stable in connection. All kinds of teaming attended to.
- ELKHORN**
HOTEL MANITOBA.
 W. J. DIXON, Prop.
 New building, new furnishings, furnace heating, acetylene gas. First-class. Large sample rooms.
- FLEMING**
WINDSOR HOTEL.
 W. GEO. CLEVERLY, Prop.
 New management. Rates \$11.50. Renovated and re-furnished. Commodious sample rooms. Heated by hot air. Livery and feed stable in connection. Inside closet.
- ROSTHERN**
OCCIDENTAL HOTEL.
 H. A. MCGEVEN, Prop.
 New house. Up-to-date appointments

- RED DEER, ALTA.**
ALBERTA HOTEL.
 BEATTY & BRINDLE, Props.
 C. and E. dining hall, good sample rooms and every accommodation for commercial travellers and the general public.
- WETASKIWIN, ALTA.**
CRITERION HOTEL.
 F. M. HAMILTON, Proprietor.
 New buildings, new furnishings, hot and cold baths, heated by furnace and lighted with gas and good sample rooms.
- STRATHCONA**
STRATHCONA HOUSE.
 W. H. SHEPPARD, Prop.
 First-class. Opposite depot.
- EDMONTON**
ALBERTA HOTEL.
 JACKSON & GRIERSON, Proprietors
 Sample rooms. Free bus. Livery in connection.
- MACLEOD**
MACLEOD HOTEL.
 THOS. WILTON, Prop.
 Good sample rooms and every accommodation for commercial travellers and the general public. Rates \$2.00 per day. Bus to and from all trains.
- PINCHER CREEK**
HOTEL ARLINGTON.
 MITCHELL & DOBBIE, Props.
 New buildings, new and commodious bedrooms, parlors, bathrooms and sample rooms. Newly furnished. Heated throughout by hot air, lighted by gas. Electric bells in every room. Bus second to none; and the best stock of wines, liquors and cigars in Alberta. Miss Mitchell, Matron.
- NEW WESTMINSTER, B. C.**
HOTEL COLONIAL.
 J. E. INSLY, Proprietor
 Special attention given to commercial travellers. Charges moderate.
- VANCOUVER**
HOTEL LELAND.
 R. DOWSWELL, Proprietor.
 Refurnished and remodelled. Rates \$1.50 to \$2.00 per day. Long distance phone. One block from C. P. R. depot and station wharves. W. E. Grigor, Manager.
- VICTORIA**
HOTEL VERNON.
 JAR. PATTERSON, Mgr.
 Headquarters for commercial and business men. Free bus and sample rooms
- KAMLOOPS**
GRAND PACIFIC HOTEL.
 P. A. BARNHART, Proprietor.
 The best hotel in Kamloops. Ample accommodation.
- GREENWOOD, B. C.**
IMPERIAL HOTEL.
 GRAHAM & PARRY, Proprietors.
 Headquarters for commercial travellers and all business men.
- PHOENIX, B. C.**
THE VICTORIA HOTEL.
 B.C. Hotel Co., Ltd., B. TOMKINS, Mgr.
 Electric bells, electric lighted, furnace heated, finest liquors and cigars. Sample rooms.

STATISTICAL WHEAT REPORT.

WHEAT IN CANADA.

Stocks of wheat in Canada at principal points of accumulation are reported as follows:

Montreal	55,000
Toronto	60,000
Coteau, Que.	40,000
Devot Harbor, Ont.	38,000
Kingston	38,000
Port William, Port Arthur and	38,000
Kewatin	5,600,000
Winnipeg	12,700,000
Manitoba elevators	12,700,000

Total March 8, 1924 19,224,000
 Total previous year 19,202,000
 Total a year ago 5,468,000

HARDSTREET'S REPORT OF STOCKS.

Total stocks in the United States and Canada, east of the Rocky Mountains, as reported by Bradstreet's March 8, were 8,790,000 bushels, as against 8,415,000 bushels the previous year.

Total stocks in the United States and Canada a year ago were 79,000 bushels, according to Bradstreet's report.

Stocks of wheat at Pacific coast ports on March 1 were 5,520,000 bushels.

THE VISIBLE SUPPLY.

The Chicago visible supply statement of stocks in the United States and Canada, east of the Rocky Mountains, for the week ending March 15 was 59,997,000 bushels, being a decrease of 1,135,000 bushels for the week. A year ago the visible supply was 56,122,000 bushels, two years ago 52,910 bushels. Three years ago 52,922,000 bushels, four years ago 51,417,000 bushels, five years ago 49,630,000 bushels.

STOCKS OF OATS AND CORN.

The visible supply of oats in the United States and Canada, east of the Rocky Mountains is 2,985,000 bushels, compared with 3,073,000 bushels a year ago. The visible supply of corn is 5,986,000 bushels, compared with 5,238,000 bushels a year ago, according to the Chicago statement.

WORLD'S WHEAT STOCKS.

Stocks of wheat in America, South Europe and abroad for Europe Feb. 1 in each year for a series of years, were as follows—Bradstreet's report:

1902	108,000,000
1903	106,000,000
1904	112,000,000
1905	119,000,000
1906	117,000,000
1907	118,000,000
1908	117,000,000
1909	124,000,000

WHEAT MOVEMENT.

The following table gives the receipts of wheat at the four principal United States spring wheat markets, from the beginning of the crop movement, July 1, 1901, to date, compared with the same period of last year:

	This crop.	Last crop.
Minneapolis	50,000,450	58,206,150
Milwaukee	171,800	171,800
Duluth	28,829,424	14,927,749
Chicago	42,421,698	34,116,394
Total	140,407,698	113,343,193

The following table gives the receipts of wheat at the four principal United States winter wheat markets, from the beginning of the crop movement, July 1, 1901, to date, compared with the same period of last year:

	This crop.	Last crop.
Toledo	6,146,888	7,831,442
St. Louis	15,508,920	18,127,771
Detroit	161,100	2,528,000
Kansas City	16,785,748	31,642,317
Total	41,294,717	60,040,431

Winnipeg Prices a Year Ago.

Following were Winnipeg prices a year ago:

Wheat—Jobbing No. 1 hard closed at 81c in store Port William.

Flour—Jobbing price per sack: Patent, 82 1/2c; best bakers, 81.50c.

Millets—Bran, 50c per ton, shorts, 47c per ton delivered.

Oats—Carltons on track, Alberta 4 @ 81c; Manitobas, 80c/80c.

Barley—40c/45c per bushel.

Corn—in car lots 40c/45c per bushel of 50 lbs.

Butter—Dairy, 15c/16c per lb.; creamery jobbing at 22c.

Cheese—10c to retail merchants.

Eggs—10c for Manitoba, fresh, less expense.

Potatoes—Farmers' loads on the street, 60c/65c per bushel.

Dressed Mutton—Beef, 15c/16c for city dressed; country, 50c per lb.; hogs, 6c/7c.

Poultry—Dressed chickens, 7c/10c; ducks, dressed, 8c; geese, 8c; turkeys, dressed, 11 to 15c per lb.

Game—Rabbits, 12c per pair; jack rabbits, 25c each, and wild pigeons 30c per pair, pair.

Hides—No. 1 hides, 50c/55c per lb.; from 49c/54c.

Wool—50c/55c for unwashed fleece.

Baled Hay—30c per lb.

Seneca Hay—47c/48c per ton on cars.

Live Stock—Cattle 15c/16c; sheep nominal; hogs, 14c/15c.

Grain and Milling Notes.

F. A. handlers and lined off men of Minneapolis, Minn., are said to have taken up the question of bringing 30 mills, located in Minnesota, into bond. The desirability of such a procedure is questioned, but the fact remains that a local elevator has been asked for facts regarding storage capacity for flaxseed shipped in bond.

Montreal Trade Bulletin: "Those dealers who pretend that \$3.60 is the lowest price for 90 per cent. patents car lots on track must know better, as Western millers are asking for only \$2 and \$3.06 each in the West; but even at the decline buyers are not taking hold. Surely the dealer who makes the statement that he cannot buy under \$3.60 is not the same dealer who has sold at \$3.50 1/2 to 2 1/2 car lots at thirty days."

Reviewing the wheat market of last week a Montreal exchange says:—"Considerable business is reported in Manitoba, chiefly for March shipment, and a large amount of ocean space has been engaged for that month by Portland, Me., Boston and New York for United Kingdom ports. The Dominion S.S. Fisherm, it is said, will leave for that week with thirty loads of wheat, or about 240,000 bushels, for Liverpool. There has been any amount of consignment this month's shipment and also some for the first half of April, but our ship agents say they have very little call for May and June, which they are, of course, most interested in."

Ten Trains of Flour.

It was announced on Saturday that F. W. Thompson, general manager of the W. W. Ogilvie Milling Co., has just closed the largest single sale of flour ever made in the Dominion of Canada, being an order for the shipment to South Africa of 35,000 barrels. The magnitude of this order can probably be better appreciated when it is stated that it will comprise a solid shipment equivalent to one rail load. It is a matter of congratulation, not only to the Ogilvie company but to the entire Dominion of Canada, as the order, if extended, could be so promptly handled by a Canadian concern.

Manitoba Wheat Stocks.

There were 4,911,355 bushels of wheat in store at Port William and Port Arthur on March 17. A year ago stocks in store at Port William were 1,705,000 bushels. Two years ago there were 3,555,000 bushels. Stocks in store at Port William, Port Arthur, Kewatin, Winnipeg, and interior points are estimated approximately at 18,900,000 bushels, compared with 2,128,000 bushels a year ago, 9,000,000 bushels two years ago, and 3,500,000 bushels four years ago.

Grain Inspection.

During the week ending March 14 there were inspected 1,112 cars of grain, comprising the following: Wheat—No. 1 hard, 28 cars; No. 1 northern, 356 cars; 2 northern, 540 cars; 3 northern, 20 cars; No. 4, 2 cars; No. 1 rejected, 2 cars; No. 2 rejected, 2 cars; no grade, 27 cars; making a total inspection of wheat of 990 cars.

Oats—No. 1 white, 1 car; No. 2 white, 81 cars; 2 mixed, 8 cars; fed, 30 cars; no grade, 1 car; total, 121 cars.

Barley—No. 3, 2 cars; fed, 2 cars; no grade, 1 car; making a total of 5 cars.

Flax—None.

During the same period a year ago the total number of cars inspected was 660, and two years ago 415 cars.

The employees of the various work shops of Winnipeg are being organized into a union.

T. A. Russell, who has done so much valuable work as secretary of the Canadian Manufacturers' Association, has resigned that position to become manager of the Canada Cycle and Motor Company. The vacancy has been filled by the appointment of H. J. Young, secretary of the Toronto branch of the association.

Fort William Grain Stocks.

Stocks of grain in store at Fort William on Monday, the 17th inst. were as follows:—Wheat—1 hard, 319,801 bushels; No. 1 northern, 1,825,770 bushels; No. 2 northern, 2,196,862 bushels; No. 3 northern, 87,713 bushels; other grades, 34,418 bushels; making the total of wheat 4,466,252 bushels.

American flax, in Grain Trade Barley—No. 2, 871 bushels.

Receipts of wheat at Fort William during the week ending March 7 amounted to 25,190 bushels, and shipments to 11,206 bushels. Receipts of oats amounted to 3,570 bushels, and shipments, 3,614 bushels. Receipts of barley were nil, and shipments nil.

Stocks in store at King's elevator, Port Arthur, on the 17th inst. were:—Wheat—No. 1 hard, 4,140 bushels; No. 1 northern, 51,317 bushels; No. 2 northern, 47,778 bushels; other grades, 128,297 bushels; total, 232,213 bushels.

Oats—2 white, 9,299 bushels mixed, 14,774 bushels; total, 24,073 bushels.

Receipts of wheat at this elevator during the week were 10,761, and shipments, 11,476.

Stocks in grain in store at the new Canadian Northern elevator at Port Arthur on the 17th inst. were as follows:—Wheat—No. 1 hard, 18,993 bushels; No. 1 northern, 4,431 bushels; No. 2 northern, 129,243 bushels; No. 3 northern, 7,541 bushels; other grades, 2,966 bushels; making a total of 212,264 bushels. Receipts of wheat during the week amounted to 129,001 bushels.

He—Did you say he was a millionaire?
 She—No, a milliner.
 He—Well, that should be the same thing if he collects his bills regularly.

WANTED—SEVERAL PERSONS OF character and good reputation in each state (one in this county) required to represent and advertise our established wealthy business house of solid financial standing. Salary \$100 weekly, with expenses additional, all payable in cash each Wednesday direct from head office. Home and carriage furnished, when necessary. References. Business address stamped and returned to Manager, 516 Oxtown Building, Chicago.



WINNIPEG GRAIN AND PRODUCE EXCHANGE
 C. A. YOUNG, President
 GEO. V. HASTINGS, CHAS. S. BROWN, Vice-Presidents

LICENSED AND BONDED
 THOMPSON, SONS & CO.
 GRAIN COMMISSION MERCHANTS
 All grades of Wheat, Oats and Barley handled. Best prices; prompt returns. Liberal advances on B. L. Write for further information.

WINNIPEG.

H. D. METCALF
 GRAIN EXPORTER
 230 GRAIN EXCHANGE WINNIPEG 10 STORE STREET MONTREAL

Direct connection with Europe's ports.

THE DOMINION ELEVATOR CO.
 LIMITED
 GRAIN EXPORTERS
 OFFICE:

GRAIN EXCHANGE WINNIPEG

KIRKPATRICK & COOKSON
 Montreal.
 Consignments of Wheat and Manitoba Flour solicited.

F. O. B. Orders of Brain, Barley, Oats, etc., requested.
 Established 1890, Manitoba Grain Code used.

JAS. CARRUTHERS & CO.
 GRAIN EXPORTERS

MONTREAL TORONTO WINNIPEG

The Northern Elevator Co.
 LIMITED.
 HEAD OFFICE - WINNIPEG.
 BRANCH OFFICES: MONTREAL NEW YORK LONDON, ENG.

THE WINNIPEG ELEVATOR CO.
 GRAIN EXPORTERS

OFFICE: GRAIN EXCHANGE, WINNIPEG

ROBT. MUIR & CO.
 GRAIN DEALERS AND MILLERS
 SHIPPERS OF WHEAT, OATS, BARLEY, NO. 1 FLOUR, STRAW, SWEETS, ETC.

Buy or sell on commission. Refer to job or selling grain in car lots with wire up for quotations. Advances on consignments. Licensed and bonded.

WINNIPEG, MAN.
 M. McLAUGHLIN & CO.
 ROYAL DOMINION MILLERS
 TORONTO.
 CAPACITY, 700 BUSHELS DAILY

MILLERS OF HARD WHEAT
 No. 1 Manitoba Hard Wheat

Canadian Pacific Railway

The Quickest
And Best Route

TO THE
EAST & WEST

Train leaves for the East at 10.00
Train leaves for the West at 10.30

THROUGH CARS TO
Toronto, Montreal,
Vancouver, Seattle.

Passengers comfort assured in
through Tourist Cars to

TORONTO
MONTREAL
BOSTON
VANCOUVER
SEATTLE

Rates quoted for Tourists to
CALIFORNIA, CHINA, JAPAN,
around the World.

For full particulars apply at City
Office, opposite Post Office, or at
the Depot.

C. E. McPHERSON,
Gen. Pass. Agt. Winnipeg

WANTED

Local agents or travelling salesmen for
Manitoba and the Territories, to handle a
complete line of nursery stock, fruit
trees, ornamental trees, seed potatoes,
small fruits, etc. We grow special lines
of hardy Russian stock, adapted to cold
climate. Sample cases, etc., supplied
free. For terms apply now.

PELHAM NURSERY COMPANY,
Toronto, Ont.
N. B.—Special inducements to farmers
who can only work part time at the business.
Handsome catalogue free on application,
which gives valuable information
concerning ornamental and fruit stock.
P. N. Co.

EVERYTHING IN

BROOMS
BRUSHES
BASKETS

From the cheapest that's good to the
best that's made.

WALTER WOODS & CO

WHOLESALE WOODENWARE

147 Gannatyne Ave., Winnipeg.



THROUGH TICKETS
TO ALL PORTS.
EAST, SOUTH AND WEST
CHEAP TICKETS TO CALIFORNIA
With through Tourist Car, every Wednesday,
Friday, via Portland and Shasta route.

OCEAN TICKETS.
On sale to Great Britain and the Continent;
also to Adelaide ports, etc.
Trains leave Winnipeg daily at 1.45 p.m.,
from Canadian Northern Railway station,
Water street, first-class equipment,
including Pullman and Dining Cars.
For further information call on nearest
Canadian Northern Ticket Agent, or write
CHAS. S. FEE,
Gen. Pass. & Ticket Agt., St. Paul,
Minn., or—
H. SWINFORD,
Gen. Agt., 391 Main Street, Winnipeg.

I. C. FELL & CO.,
DIST. MERCHANTS



ATLANTIC STEAMSHIP LINES.

Allan Line—From St. John.
Numidian March 15
Ionian March 22
Allan Line—From Halifax.
Numidian March 17
Ionian March 24
Beaver Line—From St. John.
Lake Ontario March 15
Dominion Line—From Boston.
Commonwealth March 20
Dominion Line—From Portland.
California April 11
White Star Line—From New York.
Germanic March 19
Cymric March 25
Cunard Line—From New York.
Etruria March 22
Campania March 29
Cunard Line—From Boston.
Saxonia March 18
Ultonia March 29
American Line—From New York.
St. Louis March 19
Philadelphia March 26
Red Star Line—From New York.
Kensington March 19
Hayverford March 26
Anchor Line—From New York.
Astoria March 29
Furnessia April 11
RATES: Cabin, \$50, \$65, \$80, \$100, \$150 and
upwards. Second Cabin, \$25, \$30, \$40
and upwards. Steerage, \$24.50, \$25.50, \$26.
Passengers ticketed through to all points
in Great Britain and Ireland, and at
especially low rates to all parts of the
European continent. Prepaid passage arranged
from all points. Apply to the nearest
steamship or railway ticket agent, or to
W. P. CUMMINGS, General Agent,
Winnipeg, Man.

W. C. MACDONALD, Actuary. J. K. MACDONALD, Managing Director.

The Confederation
Life Association

There are no conditions as to residence, travel or occupation in the Uncon-
ditional Accumulative Policies issued by this Association. They guar-
antee Extended Insurance, Paid-up Policies, and Cash Surrender values.

Manitoba, N. W. T. and S. C.—Winnipeg Office, 467 Main Street.
CHARLES E. KERR, Sec.-Treasurer. DANIEL McDONALD, Manager.
HENRY WORSLEY, City Agent.

Brandon Office F. W. GILL, Cashier.

RAW FURS
THERE'S MONEY IN IT!
SHIP YOUR
FURS
HIDES DEERSKINS
and SEMEGA
TO
McMILLAN FUR & WOOL CO.
MINNEAPOLIS, MINN.
High Prices. Prompt Returns.
WRITE FOR PRICE CIRCULARS.

Hotel
Leland

The Palace Family
and Commercial Hotel

W. D. DOUGLAS
MANAGER

City Hall Square, Winnipeg

RATES :
\$2.00 to \$4.00
PER DAY

SECOND TO NOTHING
IN CANADA

MOYIE LUMBER COMPANY

Manufacturers and Dealers in

LUMBER LATH SHINGLES
MOULDINGS
CEDAR POSTS AND POLES

DRY KILN AND PLANERS IN CONNECTION

SAMUEL GRANT, Manager

MOYIE, B.C.

SEVEN PAPER MACHINES NOW RUNNING

We are therefore ready to book orders for

News, Tissues,
Heavy Wrappings

Writings, Litho, Nos. 1, 2 and
3 Book, Bristol Board,
Cover Papers and
Woodboard

THE E. B. EDDY CO. LIMITED

Hull, Montreal, Toronto, Quebec, Ottawa, Hamilton,
Kingston, London, St. John, N.B., Halifax, Winnipeg, Victoria, Vancouver

T & B
PLUG
AND
CUT
TOBACCO

Try the new fours. They are giving an
entire satisfaction. Pays the retailer a
handsome profit.

THE GEO. E. TUCKETT & SON CO., LTD
HAMILTON.

TESS & PERRON, Agents, Winnipeg.

Have You Bought

Your Wagons,
Toy Carts,
Velocipedes,
Baby Carriages

We have a big assortment of these in stock. We are also carrying a large range of Hammocks. Catalogue, with best prices on application.
We have just received a large range of Coronation Tablets, Exercise and Scribbling Books and Papeteries. These are right up-to-date and you should have some.

CLARK BROS. & CO. P. O. BOX 1240 WINNIPEG

THE **IMPERIAL**

—
WHOLESALE FRUIT AND PRODUCE CO.

We handle all kinds of green fruits and are prepared to fill your orders for same promptly.

We also buy or handle on commission everything in the way of country produce at highest cash prices and low rates of commission.

Settlements made promptly.

380 Elgin Avenue, Winnipeg.

THE EVER INCREASING DEMAND FOR

COCKSHUTT PLOWS

has necessitated larger manufacturing facilities from year to year.

We are now pleased to announce that during the present season extensive additions will be made to our Factory and Plant, and that our present facilities will be increased by 100 per cent.

HAVE YOU SECURED THE AGENCY FOR THE CELEBRATED COCKSHUTT PLOWS?

If so, you are assured of the Spring Plow Trade in your Territory.

COCKSHUTT PLOW COMPANY, LTD., WINNIPEG

Factory: BRANTFORD

To those who have not been getting

OGILVIE'S ROLLED OATS

*We would suggest your Insisting on getting
OGILVIE'S—and no other.*

*They are the best ever made, being so pronounced by all who
are using them. Made from selected white oats.*

DELICIOUS FLAVOR

FREE FROM HULLS

Grain Tickets

AND OTHER STATIONERY.

SEND FOR SAMPLES

THE FRANKLIN PRESS Ltd. Opp. Grain Exchange, Winnipeg

"REFINED ALE"

(Which Sparkles Like Champagne.)

"EXTRA STOUT"

and

"REDWOOD LAGER"

Are what the people are using.

WHY?

BECAUSE they are always marketed in
FINE CONDITION.

BECAUSE THEY ARE THOROUGHLY
MATURED in wood.

BECAUSE all ingredients are PURE.

BECAUSE THE UTMOST CLEAN-
LINESS is observed in every process of
manufacture.

Order from your wholesale dealer or direct
from Redwood factories, Win-
nipeg.

E. L. DREWRY Manufacturer and
Importer, Winnipeg.

SADLER & HAWORTH

Tanners and Manufacturers of

Oak Leather Belting

Montreal and Toronto.

JOHN A. CARRUTHERS, Selling
Agent, 120 King Street, Winnipeg,
Manitoba.

WM. FERGUSON

WHOLESALE

**Wines, Liquors
and Cigars**

818 STREET, BRANDON

IMPORTANT . . .

My travellers are now on the
road with Spring and Fall Sam-
ples.

It will be to the interest of
Merchants to defer buying until
they see my Samples.

THOS. CLEARHURST

BROCKVILLE, ONT.