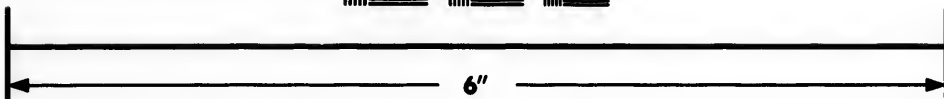
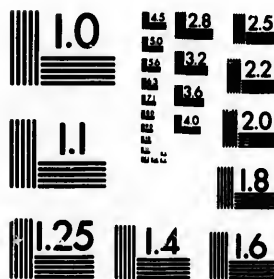


**IMAGE EVALUATION  
TEST TARGET (MT-3)**



**Photographic  
Sciences  
Corporation**

23 WEST MAIN STREET  
WEBSTER, N.Y. 14580  
(716) 872-4503

**CIHM/ICMH  
Microfiche  
Series.**

**CIHM/ICMH  
Collection de  
microfiches.**



**Canadian Institute for Historical Microreproductions / Institut canadien de microreproductions historiques**

**© 1987**

Technical and Bibliographic Notes/Notes techniques et bibliographiques

The Institute has attempted to obtain the best original copy available for filming. Features of this copy which may be bibliographically unique, which may alter any of the images in the reproduction, or which may significantly change the usual method of filming, are checked below.

L'institut a microfilmé le meilleur exemplaire qu'il lui a été possible de se procurer. Les détails de cet exemplaire qui sont peut-être uniques du point de vue bibliographique, qui peuvent modifier une image reproduite, ou qui peuvent exiger une modification dans la méthode normale de filmage sont indiqués ci-dessous.

- Coloured covers/  
Couverture de couleur
- Covers damaged/  
Couverture endommagée
- Covers restored and/or laminated/  
Couverture restaurée et/ou pelliculée
- Cover title missing/  
Le titre de couverture manque
- Coloured maps/  
Cartes géographiques en couleur
- Coloured ink (i.e. other than blue or black)/  
Encre de couleur (i.e. autre que bleue ou noire)
- Coloured plates and/or illustrations/  
Planches et/ou illustrations en couleur
- Bound with other material/  
Relié avec d'autres documents
- Tight binding may cause shadows or distortion  
along interior margin/  
La reliure serrée peut causer de l'ombre ou de la  
distorsion le long de la marge intérieure
- Blank leaves added during restoration may  
appear within the text. Whenever possible, these  
have been omitted from filming/  
Il se peut que certaines pages blanches ajoutées  
lors d'une restauration apparaissent dans le texte,  
mais, lorsque cela était possible, ces pages n'ont  
pas été filmées.
- Additional comments:/  
Commentaires supplémentaires:  
[Printed ephemera] 1 sheet, [4] p.

- Coloured pages/  
Pages de couleur
- Pages damaged/  
Pages endommagées
- Pages restored and/or laminated/  
Pages restaurées et/ou pelliculées
- Pages discoloured, stained or foxed/  
Pages décolorées, tachetées ou piquées
- Pages detached/  
Pages détachées
- Showthrough/  
Transparence
- Quality of print varies/  
Qualité inégale de l'impression
- Includes supplementary material/  
Comprend du matériel supplémentaire
- Only edition available/  
Seule édition disponible
- Pages wholly or partially obscured by errata  
slips, tissues, etc., have been refilmed to  
ensure the best possible image/  
Les pages totalement ou partiellement  
obscurcies par un feuillet d'errata, une pelure,  
etc., ont été filmées à nouveau de façon à  
obtenir la meilleure image possible.

This item is filmed at the reduction ratio checked below/  
Ce document est filmé au taux de réduction indiqué ci-dessous.

10X	12X	14X	16X	18X	20X	22X	24X	26X	28X	30X	32X
						✓					

The co  
to the

The im  
possib  
of the  
filming

Origin  
beginn  
the las  
slon, c  
other  
first p  
sion, s  
or illu

The la  
shall c  
TINUE  
which

Maps.  
differ  
entire  
beginn  
right  
requir  
metho

The copy filmed here has been reproduced thanks to the generosity of:

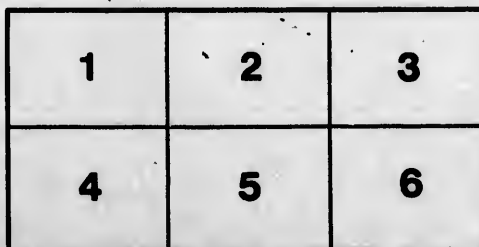
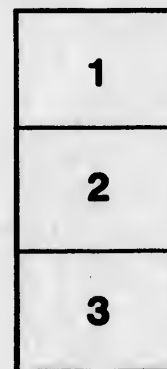
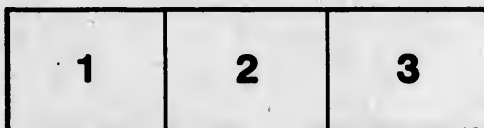
Metropolitan Toronto Library  
Canadian History Department

The images appearing here are the best quality possible considering the condition and legibility of the original copy and in keeping with the filming contract specifications.

Original copies in printed paper covers are filmed beginning with the front cover and ending on the last page with a printed or illustrated impression, or the back cover when appropriate. All other original copies are filmed beginning on the first page with a printed or illustrated impression, and ending on the last page with a printed or illustrated impression.

The last recorded frame on each microfiche shall contain the symbol  $\rightarrow$  (meaning "CONTINUED"), or the symbol  $\nabla$  (meaning "END"), whichever applies.

Maps, plates, charts, etc., may be filmed at different reduction ratios. Those too large to be entirely included in one exposure are filmed beginning in the upper left hand corner, left to right and top to bottom, as many frames as required. The following diagrams illustrate the method:



L'exemplaire filmé fut reproduit grâce à la générosité de:

Metropolitan Toronto Library  
Canadian History Department

Les images suivantes ont été reproduites avec le plus grand soin, compte tenu de la condition et de la netteté de l'exemplaire filmé, et en conformité avec les conditions du contrat de filmage.

Les exemplaires originaux dont la couverture en papier est imprimée sont filmés en commençant par le premier plat et en terminant soit par la dernière page qui comporte une empreinte d'impression ou d'illustration, soit par le second plat, selon le cas. Tous les autres exemplaires originaux sont filmés en commençant par la première page qui comporte une empreinte d'impression ou d'illustration et en terminant par la dernière page qui comporte une telle empreinte.

Un des symboles suivants apparaîtra sur la dernière image de chaque microfiche, selon le cas: le symbole  $\rightarrow$  signifie "A SUIVRE", le symbole  $\nabla$  signifie "FIN".

Les cartes, planches, tableaux, etc., peuvent être filmés à des taux de réduction différents. Lorsque le document est trop grand pour être reproduit en un seul cliché, il est filmé à partir de l'angle supérieur gauche, de gauche à droite, et de haut en bas, en prenant le nombre d'images nécessaire. Les diagrammes suivants illustrent la méthode.

ire  
détails  
es du  
modifier  
per une  
filmage

es

y errata  
d to

at  
e pelure,  
on à



32X



"TO-NIGHT I DO INTEND THAT WE MAY SUP TOGETHER."  
(ITHELLO)

**SECOND**  
**Annual Dinner**  
OF THE  
**BOARD OF TRADE**

OF THE  
**City of Toronto**

FRIDAY, JAN. 4<sup>TH</sup> 1889.

AT THE HORTICULTURAL  
GARDENS,  
TORONTO.



Reph. Smith & Co

"We are convened upon a pleasing treaty  
and have hearts  
Inclined to honor and advance  
The theme of our assembly."

(Coriolanus)

"How many ages hence shall this our lofty scene be acted o'er"?  
—Julius Caesar.

.....

# Menu.



Oyster Soup.

\*

Mayonaise of Salmon. Bread and Butter rolled.

Roast Young Turkey.

Jellied Turkey. Sugar cured Ham.

Jellied Tongue

\*

Roast Chicken. Roast Duck. Galantine of Jellied Veal.

Roast Lamb.

\*

Spiced Beef. Boar's Head, stuffed.

\*

Lobster Salad.

Chicken Salad. Salmon Salad.

\*

Rolls. Pickles. Hot Potatoes.

Hot Tomatoes

\*

Maderia Jelly. Champagne Jelly. Chocolate Creams.

Italiane Creams. Charlotte Russes. Filled Meringues.

Spanish Pies. Macaroons. Fancy Cakes  
and Pastry

\*

Strawberry, Vanilla and Lemon Ice Creams and Ices.

\*

Celery. Cheese. Biscuits.

Coffee. Lemonade.

\*

Apples. Oranges. Grapes. Bananas. Pine Apples.

\*

Almonds. Raisins.

.....

"Do as adversaries do in law, strive mightily; but eat and drink  
as friends."

# Coasts.



INTRODUCTORY—The President of the Board of Trade of the city of Toronto.

"My good will, and your good welcome here,"  
—*Comedy of Errors*.



## 1.—THE QUEEN.

"Hail to thee Lady, and the grace of Heaven  
Before, behind thee, and on every hand  
Enwheel thee 'round."—*Othello*.

## 2.—THE GOVERNOR-GENERAL OF CANADA.

"To put the power of sovereign rule into a good man's hand,  
Is giving peace and happiness to millions."

## 3.—THE ARMY, NAVY AND ACTIVE MILITIA.

"They have used their dearest action in the tented field."—*Othello*.

"For the deck it was their field of Fame."—*Campbell*.

"Shoulder to Shoulder, steady and true,  
Fight as your forefathers taught you to do."—*Old Song*.

## 4.—OUR SISTER PROVINCES.

"As between the various Provinces we need a national  
Sentiment more potent than a mere community of profit."  
—*W. A. Foster*.

## 5.—THE COMMERCIAL, MANUFACTURING AND AGRICULTURAL INTERESTS OF CANADA.

"Tyre, the crowning city whose merchants are princes, whose  
Traffickers are the honorable of the earth."—*Isaiah xxiii. 8*.

"Now the iron anvils ring,  
And the merry shuttles sing."—*Schiller*.

"O only too happy husbandmen, if they knew but their own  
Advantages for whom in the absence of clashing arms, the  
Grateful earth pouts forth an easy sustenance—support."—*Virgil*.

## 6.—SISTER BOARDS OF TRADE.

"Like to a double cherry, seeming parted  
But yet a union in partition."—*Midsummer Night's Dream*.

## 7.—THE PARLIAMENT OF CANADA AND ONTARIO LEGISLATURE.

'God speed the Parliament.'—*Shakespeare*.

## 8.—THE MAYOR AND CORPORATION.

"For forms of government let fools contend;  
Whate'er is best administered is best."—*Pope*.

## 9.—THE PRESS.

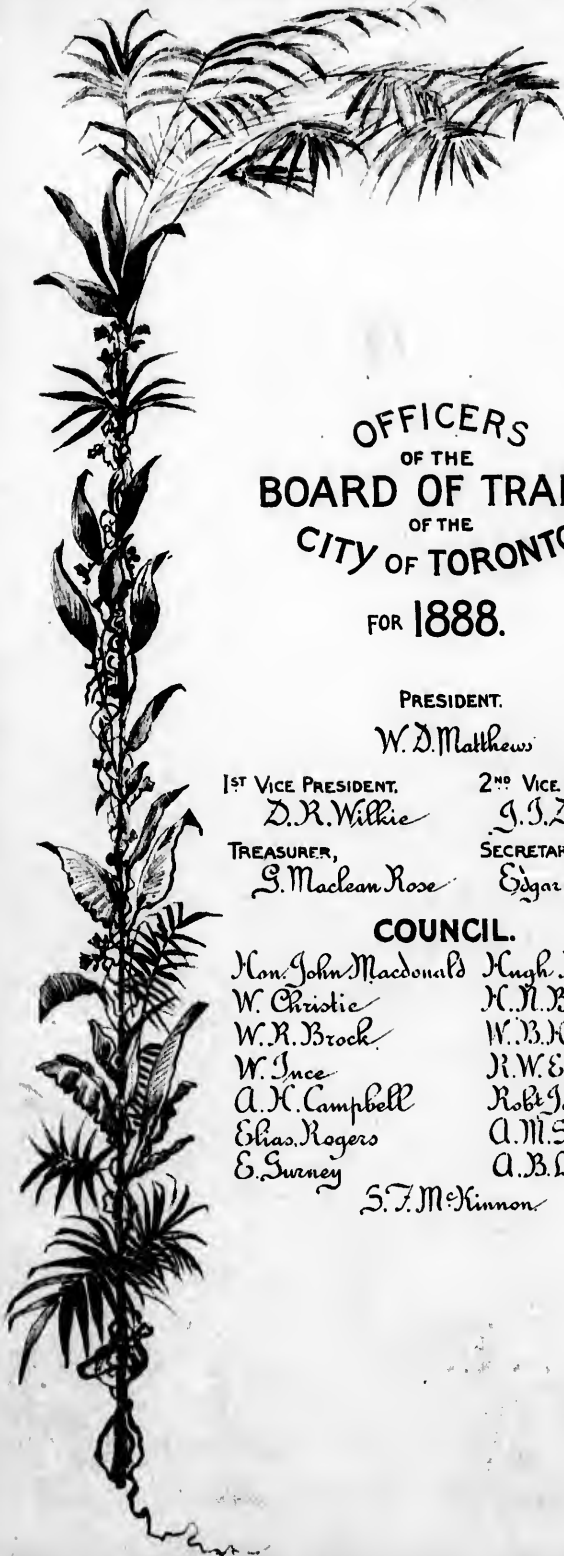
"He will print them no doubt,  
For he cares not what he puts into the press."  
—*Merry Wives of Windsor*.

## 10.—THE LADIES.

"O flower of creation, last and best of all God's works."

"Good night, good night. Parting is such sweet sorrow,  
That I shall say good night—till it be to-morrow."  
—*Romeo and Juliet*.

1881. Trade Dinner.



OFFICERS  
OF THE  
BOARD OF TRADE  
OF THE  
CITY OF TORONTO  
FOR 1888.

PRESIDENT.

*W. D. Matthews*

1<sup>ST</sup> VICE PRESIDENT.

*D. R. Wilkie*

2<sup>ND</sup> VICE PRESIDENT.

*J. J. Davidson*

TREASURER,

*S. Maclean Rose*

SECRETARY.

*Edgar A. Wilks*

COUNCIL.

*Hon. John Macdonald*

*Hugh Blair*

*W. Christie*

*H. N. Baird*

*W. R. Brock*

*W. B. Hamilton*

*W. Ince*

*R. W. Elliot*

*A. H. Campbell*

*Robt Jaffray*

*Elias Rogers*

*A. M. Smith*

*E. Sweeney*

*A. B. Lee*

*S. F. McKinnon*



