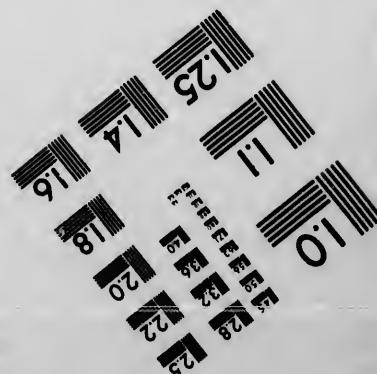
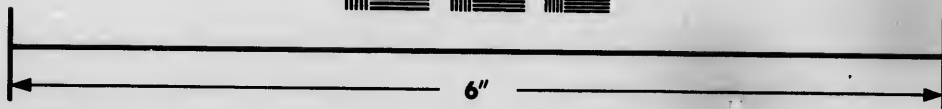
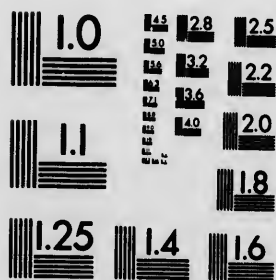


**IMAGE EVALUATION  
TEST TARGET (MT-3)**



**Photographic  
Sciences  
Corporation**

23 WEST MAIN STREET  
WEBSTER, N. Y. 14580  
(716) 872-4503

**CIHM  
Microfiche  
Series  
(Monographs)**

**ICMH  
Collection de  
microfiches  
(monographies)**



**Canadian Institute for Historical Microreproductions / Institut canadien de microreproductions historiques**

**© 1993**

Technical and Bibliographic Notes / Notes techniques et bibliographiques

The Institute has attempted to obtain the best original copy available for filming. Features of this copy which may be bibliographically unique, which may alter any of the images in the reproduction, or which may significantly change the usual method of filming, are checked below.

L'Institut a microfilmé le meilleur exemplaire qu'il lui a été possible de se procurer. Les détails de cet exemplaire qui sont peut-être uniques du point de vue bibliographique, qui peuvent modifier une image reproduite, ou qui peuvent exiger une modification dans la méthode normale de filmage sont indiqués ci-dessous.

- Coloured covers/  
Couverture de couleur
  - Covers damaged/  
Couverture endommagée
  - Covers restored and/or laminated/  
Couverture restaurée et/ou pelliculée
  - Cover title missing/  
Le titre de couverture manque
  - Coloured maps/  
Cartes géographiques en couleur
  - Coloured ink (i.e. other than blue or black)/  
Encre de couleur (i.e. autre que bleue ou noire)
  - Coloured plates and/or illustrations/  
Planches et/ou illustrations en couleur
  - Bound with other material/  
Relié avec d'autres documents
  - Tight binding may cause shadows or distortion along interior margin/  
La reliure serrée peut causer de l'ombre ou de la distorsion le long de la marge intérieure
  - Blank leaves added during restoration may appear within the text. Whenever possible, these have been omitted from filming/  
Il se peut que certaines pages blanches ajoutées lors d'une restauration apparaissent dans le texte, mais, lorsque cela était possible, ces pages n'ont pas été filmées.
  - Additional comments:  
Commentaires supplémentaires:
- Coloured pages/  
Pages de couleur
  - Pages damaged/  
Pages endommagées
  - Pages restored and/or laminated/  
Pages restaurées et/ou pelliculées
  - Pages discoloured, stained or foxed/  
Pages décolorées, tachetées ou piquées
  - Pages detached/  
Pages détachées
  - Showthrough/  
Transparence
  - Quality of print varies/  
Qualité inégale de l'impression
  - Continuous pagination/  
Pagination continue
  - Includes index(es)/  
Comprend un (des) index
- Title on header taken from:/  
Le titre de l'en-tête provient:
- Title page of issue/  
Page de titre de la livraison
  - Caption of issue/  
Titre de départ de la livraison
  - Masthead/  
Générique (périodiques) de la livraison

This item is filmed at the reduction ratio checked below/  
Ce document est filmé au taux de réduction indiqué ci-dessous.

10X	12X	14X	16X	18X	20X	22X	24X	26X	28X	30X	32X
<input type="checkbox"/>	<input type="checkbox"/>	<input type="checkbox"/>	<input type="checkbox"/>	<input type="checkbox"/>	<input type="checkbox"/>	<input checked="" type="checkbox"/>	<input type="checkbox"/>	<input type="checkbox"/>	<input type="checkbox"/>	<input type="checkbox"/>	<input type="checkbox"/>

The copy filmed here has been reproduced thanks to the generosity of:

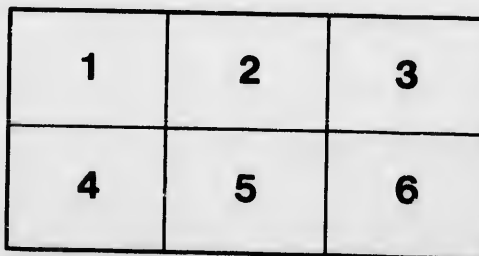
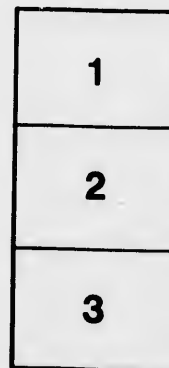
Douglas Library  
Queen's University

The images appearing here are the best quality possible considering the condition and legibility of the original copy and in keeping with the filming contract specifications.

Original copies in printed paper covers are filmed beginning with the front cover and ending on the last page with a printed or illustrated impression, or the back cover when appropriate. All other original copies are filmed beginning on the first page with a printed or illustrated impression, and ending on the last page with a printed or illustrated impression.

The last recorded frame on each microfiche shall contain the symbol  $\rightarrow$  (meaning "CONTINUED"), or the symbol  $\nabla$  (meaning "END"), whichever applies.

Maps, plates, charts, etc., may be filmed at different reduction ratios. Those too large to be entirely included in one exposure are filmed beginning in the upper left hand corner, left to right and top to bottom, as many frames as required. The following diagrams illustrate the method:



L'exemplaire filmé fut reproduit grâce à la générosité de:

Douglas Library  
Queen's University

Les images suivantes ont été reproduites avec le plus grand soin, compte tenu de la condition et de la netteté de l'exemplaire filmé, et en conformité avec les conditions du contrat de filmage.

Les exemplaires originaux dont la couverture en papier est imprimée sont filmés en commençant par le premier plat et en terminant soit par la dernière page qui comporte une empreinte d'impression ou d'illustration, soit par le second plat, selon le cas. Tous les autres exemplaires originaux sont filmés en commençant par la première page qui comporte une empreinte d'impression ou d'illustration et en terminant par la dernière page qui comporte une telle empreinte.

Un des symboles suivants apparaîtra sur la dernière image de chaque microfiche, selon le cas: le symbole  $\rightarrow$  signifie "A SUIVRE", le symbole  $\nabla$  signifie "FIN".

Les cartes, planches, tableaux, etc., peuvent être filmés à des taux de réduction différents. Lorsque le document est trop grand pour être reproduit en un seul cliché, il est filmé à partir de l'angle supérieur gauche, de gauche à droite, et de haut en bas, en prenant le nombre d'images nécessaire. Les diagrammes suivants illustrent la méthode.

LP  
F  
18  
C

**LAN**

*Incorp*

1st. CROW  
rate Far  
scattered  
Province

These lo  
the Old sep  
lished Road

2nd. Bloc  
acres eac  
Province

A town c  
position, on  
the Gore D  
expense of

This sett  
improved w  
of the Colon  
houses have

LP  
F 5012  
1830  
C3

# LANDS IN UPPER CANADA,

TO BE DISPOSED OF

BY THE

## CANADA COMPANY,

*Incorporated by Royal Charter, and Act of Parliament.*

1st. CROWN RESERVES.—Being detached lots or separate Farms, containing generally 200 acres each, scattered through the different Townships in the Province.

These lots are in many instances interspersed through the Old settlements; and have the advantages of established Roads in their immediate vicinity.

2nd. BLOCKS OF LAND containing from 1,000 to 25,000 acres each, situated in the Western Districts of the Province.

A town called Guelph, has been established in a central position, on the most considerable tract of land in the Gore District, and Roads have been opened at the expense of the Company to the various parts of the settlement, and the land has been rapidly improved with a rapidity unprecedented in any part of the Colony; a saw-mill and several houses have been built, besides a number of other buildings.

This settlement, and the land around it, has been rapidly improved with a rapidity unprecedented in any part of the Colony; a saw-mill and several houses have been built, besides a number of other buildings.

17033

descriptions of tradesmen are numbered amongst the inhabitants.

As the erection of a church is commencing, it is hoped that ere long there will be also a resident clergyman. The building of a good grist-mill and oatmeal-mill is also in progress, which will probably be in operation by the end of this year.

Settlers with capital, who prefer establishing themselves on land on which partial clearings have been made, and houses erected, may find lots with such improvements for sale, and will be at no loss for comfortable accommodations at the taverns in the town, and board and lodging at a moderate rate till they are able to establish themselves.

They will find no difficulty in procuring laborers and servants, or in contracting for buildings, or the first operations of clearing the land of timber, making fences, &c.

The distance from Guelph to York, the seat of government in Upper Canada, is not more than eighty miles, and will be reduced to sixty miles, when an intended improvement in the road is completed.

Two large Blocks in the township of Wilmot, have also been surveyed and laid out into farms, a road has been cut through one of them from Guelph leading to the Great Huron Tract, and again through that to Goderich, on Lake Huron.

THE HURON TERRITORY.—A tract of 1,100,000 acres in the shape of a triangle, its base being about sixty miles in length, resting on Lake Huron, and having a direct navigable communication through Lakes Erie and Ontario, to the Atlantic.

The Company have laid out a town in this district, at

the confu  
which pr  
one of th  
the Provi

Severa  
vantages,  
intention  
grist-mill,  
erected.)  
on the C  
ing vesse  
establishe  
inhabitan  
Countries  
tlements

The so  
more like  
abundanc  
rection,  
building,  
descriptio

Roads  
St. Thom  
are roads  
Erie. C  
dance by  
nication  
settlemer

A road  
from God  
Lake On  
and main  
them, in  
oldest se

d amongst the  
cing, it is hop-  
ent clergyman.  
eal-mill is also  
eration by the

blishing them-  
gs have been  
with such im-  
ss for comfort-  
he town, and  
they are able

g laborers and  
r the first ope-  
naking fences,  
e seat of go-  
e than eighty  
when an in-  
eted.

Wilmot, have  
s, a road has  
ph leading to  
h that to Go-

of 1,100,000  
se being about  
uron, and hav-  
hrough Lakes

his district, at

the confluence of the River Maitland with Lake Huron, which promises, from its local advantages, to become one of the most important and flourishing Settlements in the Province.

Several enterprizing colonists, attracted by these advantages, have gone to settle at Goderich, and with the intention of erecting a brewery, distillery, brick-kilns, grist-mill, &c. (a tavern and saw-mill have already been erected.) The harbour, the only one within 150 miles, on the Canadian side of the Lake, is capable of containing vessels of the burthen of 200 tons, and it has been established as a Port of Entry, which will ensure the inhabitants a great share of the trade with the Upper Countries, and their opposite neighbours in the new settlements in the United States.

The scenery in the River Maitland is beautiful, and more like English than any other in Canada. There is abundance of brick-earth and potters-clay in every direction, with abundance of lime-stone fit for burning or building, and the river abounds with fish of the finest description.

Roads are in progress from Goderich to the town of St. Thomas, in the London District, from whence there are roads to Kettle-Creek and Port-Talbot, on Lake Erie. Cattle and provisions can be obtained in abundance by this route or the still more easy water communication between Goderich and the old, well-cultivated settlements of Sandwich, Amherstburgh, and Detroit.

A road has also been completed, as before mentioned, from Goderich, by Wilmot and Guelph, to the Head of Lake Ontario, and York; and it is intended to improve and maintain all these communications, so as to make them, in every respect, equal to the best roads in the oldest settlements in the Province.



For this purpose, and towards the improvement of water communications, the building of churches, school-houses, bridges, wharfs, and other works for the benefit and accommodation of the public, the Company have engaged to expend a sum of £48,000.

With respect to the important consideration of climate and soil, in the Huron Tract, the former is as good, and the latter equal, if not superior, to any other in Upper or Lower Canada.

The company have hitherto preferred making sales of lots of about from 80 to 200 acres to individual settlers, but the commissioners in Upper Canada have directions to treat with associations of settlers for larger quantities, or even whole blocks of land, if they should prefer this course (which was adopted by many of the first settlers in the western, and now the most flourishing districts of the State of New-York;) and there will be every disposition to encourage small capitalists and enterprising and industrious emigrants by the most extended credit, on such conditions as may be only consistent with the final security of the Company.

EASTE

Con.	To
2	North
3	North
9	No. 1
"	No. 3
	Tow
9	No. 1
	11
	18.
"	No. 1
	Tow
1	No. 4
2	" 5
3	" 4
4	" 5
5	" 4
6	" 5
7	" 4
8	" 5
9	" 4
10	" 5
11	" 4
12	" 5
	T
1	North
2	"
3	"
"	No. 4
4	" 5
"	North
5	North
"	No. 4
6	North
"	No. 5
7	" 4
8	North
"	No. 5
9	" 4
10	" 5
"	" 2
11	" 4
"	No. 1
12	North

EASTERN DISTRICT. OTTAWA DISTRICT.

Improvement of  
churches, school-  
s for the benefit  
company have en-

ation of climate  
is as good, and  
other in Upper

making sales of  
individual settlers,  
have directions  
arger quantities,  
uld prefer this  
e first settlers  
ing districts of  
be every dis-  
d enterprising  
ended credit,  
stent with the

Township Lochiel.			Mountain.		
Con.	LOTS.	Acres	Con.	LOTS.	Acres
2	North 1/2 of 1 2 5.	100	1	No. 11 21 23.	200
3	North 1/2 of 1 9 11.	100	2	" 20.	200
9	No. 1.	200	3	" 21 23.	200
"	No. 38.	140	4	" 5 20.	200
	<i>Township Roxburgh.</i>		5	" 4 11 21 23.	200
9	No. 1 2 3 4 5 6 7 8 9 10		6	" 5 15 20.	200
	11 12 13 14 15 16 17		7	" 11 21 23.	200
	18.	200	8	" 5 15 20.	200
"	No. 19.	150	9	" 11 21 23.	200
	<i>Township Winchester.</i>		9	" 4 N. 1/2.	100
1	No. 4 11 21 23.	200	10	" 15 20.	200
2	" 5 15.	200	11	" 4 11 21 23.	200
3	" 4 11 21 23.	200	12	" 15 20.	200
4	" 5 20.	200	12	" 5.	180
5	" 4 11 21 23.	200		<i>Williamsburgh.</i>	
6	" 5 15 20.	200	8	No. 1 2 3 4 5 6.	200
7	" 4 11 21 23.	200		<i>OTTAWA DISTRICT.</i>	
8	" 5 15 20.	200		<i>Hawkesbury East.</i>	
9	" 4 11 21 23.	200	3	South 1/2 of 2 6 11.	100
10	" 5 15 20.	200	3	No. 17.	200
11	" 4 11 21 23.	200	4	" 6 13 20 27 34.	200
12	" 5 15 20.	200	5	" 3 17 24.	200
	<i>Township Finch.</i>		5	" 31.	195
1	North 1/2 of 4 11.	100	6	" 6 13 20.	200
2	" 1/2 of 5.	100	6	" 27.	110
3	" 1/2 of 11.	100	7	No. 3	200
"	No. 4 21.	200	7	North 1/2 of 17.	100
4	" 5.	200	8	No. 3 5 7 11.	200
"	North 1/2 of 20.	100		<i>Hawkesbury Gore.</i>	
5	North 1/2 of 11 21 23.	100	5	1.	200
"	No. 4.	200	6	2.	200
6	North 1/2 of 20.	100	8	2.	200
"	No. 5.	200		<i>Hawkesbury West.</i>	
7	" 4 11 21 23.	200	3	South 1/2 of 1 15.	100
8	North 1/2 of 20.	100	6	" 1/2 of 14.	100
"	No. 5 15.	200	9	No. 17.	190
9	" 4 11 21 23.	200		<i>Caledonia.</i>	
10	" 5 15.	200	1	No. 18 21 23 24.	200
"	" 20.	159	2	" 15 18 20.	200
11	" 4.	200	3	" 11 18 21 23.	200
"	No. 11.	72	4	" 14 15 20.	200
12	North 1/2 of 5.	100	5	" 11 21 23.	200
			6	" 5 15 20.	200

OTTAWA DISTRICT.

OTTAWA

Caledonia Continued.			Alfred Continued.			Cumberland		
Con.	LOTS.	Acres	Con.	LOTS.	Acres.	Con.	LOTS.	Acres.
7	No. 4 11 21 23.	200	3	N. 1/2 of 28.	100	3	No. 11	100
8	" 5 15 20.	200	4	No. 15.	200	4	" 3 9	200
9	" 21 23.	200	4	S. 1/2 of 5.	100	5	" 5 11	100
9	F. 1/2 of 11.	100	5	No. 4 11 16.	200	6	" 3 9	200
9	" 4.	60	5	N. 1/2 of 13.	100	7	" 5 11	100
10	" 15 20.	200	6	" 5 13 15.	200	8	" 3 9	200
11	" 21.	84	7	" 4 7 11.	"	9	" 5 11	"
	<i>Plantagenet Front.</i>			" 16.	122	10	" 3 9	200
	No. 1 broken front.	44	8	" 5 13.	40	11	" 5.	200
	" 3 " "	28	"	" 15.	130	"	" 11.	200
1	" 1.	152	9	" 4.	200	"	" 21.	200
"	" 37.	200	"	" 7 11.	"	"	" 28.	200
2	" 5 15 22 29 34 36.	200	10	" 5.	"		Lot B. in	"
3	" 4 14 21 23.	200	11	" 4 7.	"		11th	"
4	" 5.	133	12	" 5.	"		Lots on t	"
"	" 15 20.	200	13	" 4.	190		No. 1.	"
5	" 4 11 21 23.	200		<i>Cambridge.</i>			" 2 3 3	"
6	" 15 20.	200	1	No. 4 11 18 26.	200		" G	"
7	" 4 11 21 23.	200	2	" 2 8 15 23 30.	"		No. 7.	"
8	" 5 15 20.	200	3	" 4 11 18 26.	"	1	" 13.	"
9	" 4 11 21 23.	200	4	" 2 8 15 23 30.	"	"	" 19 2	"
10	" 5 15 20.	200	5	" 4 18 26.	"	"	" 14 2	"
11	" 4 21 23.	200	6	" 2 8 23 30.	"	2	" 3 13	"
12	" 15 20.	200	7	" 4 11 18 26.	"	3	" 3 13	"
13	" 4 11 21 23.	200	8	" 2 8 15 23 30.	"	4	" 3 13	"
	<i>Plantagenet Rear.</i>		9	" 4 11 18 26.	"	5	" 2 8 1	"
14	No. 4 14 19.	200	10	" 2 8 15 23 30.	"	6	" 27 B	"
15	" 3 10 20 22.	200		<i>Russell.</i>			Ride	"
16	" 4 14 19.	200	1	No. 1 8 13 15.	200		On th	"
17	" 3.	75	2	" 7 16 21.	"		No. 4 14	"
"	" 10 20 22.	200	3	" 1 8 13 15.	"	2	" 13 23	"
18	" 14 19.	200	4	" 7 16 21.	"	3	" 4 9 1	"
19	" 10 20 22.	200	5	" 1 8 13 15.	"	4	" 3 13.	"
20	" 14 19.	180	6	" 7 16 21.	"	5	" 4 12	"
	<i>Alfred.</i>		7	" 1 8 13 15.	"	6	" 3 9 1	"
1	Lot A.	70	8	" 7 16 21.	"		" 7 13	"
"	" B.	90	9	" 1 8 13 15.	"		" 2 8 1	"
2	No. 3.	60	10	" 7 16.	"		Cl	"
"	Lot A. B.	100		" 21.	36		No. 5.	"
3	No. 2.	148		<i>Cumberland.</i>			" 6.	"
"	" 3.	180	1	No. 5 21 28.	200		" 11.	"
"	Lot A. B.	100	2	" 9 16 24.	160		" 21.	"
"	No. 22 33.	200	3	No. 5.	160			"

OTTAWA DISTRICT. JOHNSTOWN DIST.

Continued.		Cumberland continued.		Clarence continued.			
LOTS.	Acres.	Con.	LOTS.	Acres.	Con.		
3.	100	3	No. 11 21 28,	200	2	No. 3 9 16 24.	200
	200	4	" 3 9 16 24,	200	3	" B. 11 21.	"
	100	5	" 5 11 21 28.	200	4	" 3 9 16 24.	"
16.	200	6	" 3 9 16 24.	200	5	" B. 5 11 21.	"
	100	7	" 5 11 21 28.	200	6	" 3 9 16 24.	"
5.	200	8	" 3 9 16 24.	200	7	" 5 11 21.	"
	"	9	" 5 11 21 28.	"	8	" 3 9 16 24.	"
	122	10	" 3 9 16 24.	"	9	" B.	120
	200	11	" 5.	205	"	" 5 11 21.	200
	40	"	" 11.	207	10	" 3 9 16 24.	"
	130	"	" 21.	222	11	" 5 11 21.	100
	200	"	" 28.	230		Osgood, br. f. on Ottawa.	
	"		Lot B. in the 5 7 9 and			No. 3.	24
	"		11th Concessions.	200		" 23.	133
	"		Lots on the Banks of the			" 29.	114
	190		Ottawa.			" 37.	90
			No 1,	200	1	" 3 23 29 37.	200
	200		" 2 3 35 36 37.	260	"	" 9.	152
	"		Gloucester.		"	" 17.	14 1/2
bridge.	"	1	No. 7.	40	2	" 4 12 18 24 32 38.	200
8 26.	"	"	" 13.	140	3	" 3 13 23 33.	"
23 30.	"	"	" 19 27.	200	4	" 2 7 12 17 22 27 32	"
26.	"	2	" 14 22 28.	"	5	<del>3 13 23 33.</del>	"
23 30.	"	3	" 3 13 23.	"	6	<del>3 13 23 33.</del>	"
26.	"	4	" 3 13 23.	"	7	" 4 12 18 24 32 38.	"
23 30.	"	5	" 13 17 22 27.	"	8	" 3 9 17 22 27 32	"
26.	"	6	" 3 13 23.	"	9	" 4 12 18 24 32 38.	"
23 30.	"		" 2 8 14 22 28.	"	10	" 6 14 24 32 42	"
sell.	"		" 27 Broken front on	120		front 1/2 28.	100
15.	200		Rideau.			" 13 24 33.	200
	"		On the Ottawa.		11	" 3.	150
5.	"	2	No. 4 14 22.	200	"	" 13.	76
	"	3	" 13 23.	"	"	" 23.	52
5.	"	"	" 4 9 14 19.	"	"	" 33.	52
	"	"	" 3 13.	"		JOHNSTOWN DISTRICT.	
5.	"	"	" 4 12 18.	"		Edwardsburgh.	
	"	"	" 3 9 17.	"	9	No. 6 13 30.	200
5.	"	"	" 7 13 19.	"	"	North 1/2 of 19.	100
	"	"	" 2 8 14.	"	"	South 1/2 of 33.	"
	36		Clarence.		"	East 1/2 of 31.	"
land.			No. 5.	194	"	No. 30.	97
	200		" 6.	192	10	" 31.	98
	"		" 11.	174	"	" 32.	99
	160		" 21.	140	"		

## JOHNSTOWN DISTRICT—continued.

Edwardsburgh Cont'd.			Marlborough Continued.		
Con.	Lots.	Acres	Con.	Lots.	Acres
10	No. 33.	100	7	East $\frac{1}{2}$ of 4.	100
"	" 34.	101	8	" 3 8 23 28.	200
"	" 35.	102	9	" 14 28 30.	"
"	" 36.	103	10	" 8 15 23 27.	80
"	" 37.	104		Broken Front No. 2.	"
	South Gower.			" " " 4.	"
1	No. 4.	200		" " " 30.	300
6	" 14.	100		Wolford.	
7	" 11.	200	2	No. 3 8.	200
8	West $\frac{1}{2}$ of 5.	100	3	" 9 <b>27</b>	200
	North Gower.			South $\frac{1}{2}$ of 2 and 17.	100
1	No. 7 13 19	200	4	No. 3.	170
2	" 4 12 23 38.	"	"	" 16.	200
3	" 8 28 38.	"	5	" 17.	200
4	" 4 9 14 24 29 34 39.	"	"	South $\frac{1}{2}$ of 9 and 27.	100
A.	" 7 13.	"	6	No. 3 8.	200
"	" 19.	190	"	South $\frac{1}{2}$ of 23.	100
	Front on the Rideau,		"	East $\frac{1}{2}$ of 28.	"
	No. 13.	70	7	No. 27.	200
	Oxford.		"	South half of 9.	100
1	No. 30.	250	8	No. 3 8 16 23 28.	80
2	" 29.	200		Montague.	
3	East $\frac{1}{2}$ of 2.	100	2	West $\frac{1}{2}$ of 8.	100
4	South $\frac{1}{2}$ of 10 and 12.	"	"	No. 16.	200
5	No. 1 5.	200	3	East $\frac{1}{2}$ of 4 and 14.	100
6	South $\frac{1}{2}$ of 1 and 19.	100	4	No. 3.	200
7	No. 4 14.	200	"	East $\frac{1}{2}$ of 8 and 23.	100
8	" 1.	"	"	South $\frac{1}{2}$ of 16.	"
9	South $\frac{1}{2}$ of 12 and 18.	100	5	No. 4 14 22.	200
10	No. 19.	200	5	Front $\frac{1}{2}$ 29.	100
"	" 7 13.	"	6	No. 2 8 23.	200
"	South west $\frac{1}{2}$ of 22.	100	"	Rear $\frac{1}{2}$ 29.	100
	Marlborough.		"	East $\frac{1}{2}$ of 16.	100
1	No. 2 4.	200	7	No. 22.	200
2	" 3 27 29.	"	"	East $\frac{1}{2}$ of 14.	100
"	East $\frac{1}{2}$ of 1.	100	8	No. 3.	200
"	South $\frac{1}{2}$ of 12.	"	"	East $\frac{1}{2}$ of 16.	100
3	No. 11 28 30.	200	9	No. 14.	200
4	" 13 16 23 28.	"	"	East half of 22 and 29.	100
4	East $\frac{1}{2}$ of 6.	100	10	No. 3 8 16.	200
5	" 14 22 29.	200	"	East half of 23 and 28.	100
6	" 3 8 16 23 26.	"		Elizabeth Town.	
7	No. 14 22 29.	"	11	No. 4 7 9 10 11 17 18.	110

JC

No. 17

" 22

South

Yonge.

No. 5,

" 10

" 20

" 4

" 17

" 11

" 17

" 17

" 20

West  $\frac{1}{2}$ East  $\frac{1}{2}$ 

Lot A.

No. 3

" 10

" 17

" 4

West  $\frac{1}{2}$ 

No. 10

" 17

" 11

" 10

" 20

" 11

South  $\frac{1}{2}$ South  $\frac{1}{2}$ 

No. 10

East  $\frac{1}{2}$  of"  $\frac{1}{2}$  of

No. 22

" 21

East  $\frac{1}{2}$  of

No. 9

" 10

No. 16

South  $\frac{1}{2}$ North  $\frac{1}{2}$

continued.

JOHNSTOWN DISTRICT—continued.

Lots.		Yonge.		Kitley continued.	
Acres.	Con.	Acres.	Con.	Acres.	Con.
10					
23 28.	2	No. 17.	200	No. 16 23	200
8 30.	5	" 22.	"	West 1/2 of 8	100
23 27.	6	South half of 13.	100	South 1/2 of 28	"
Front No. 2.	"	Yonge, formerly Escott.		" 1/2 of 16	"
" " 4.	"	No. 5, Broken Front.	279	" 1/2 of 4	"
" " 30.	3	" 10	239	No. 14	200
Volford.		" 20	77	South 1/2 of 8	100
27	1	" 4	170	No. 8.	200
of 2 and 17.	3	" 17	200	Bastard.	
	4	" 11	190	No. 4	65
	"	" 17	200	" 14 29	117
	6	" 17	150	" 3 8	200
of 9 and 27.	8	" 20 21	200	" 16	156
		Lansdown.		South 1/2 of 23	100
of 23.	2	West 1/2 of A.	100	" 1/2 of 4 14	"
28.	4	East 1/2 of 8	"	No. 16	200
	5	Lot A.	200	South 1/2 of 8	100
lf of 9.	6	No. 3	111	" 1/2 of 4	133
16 23 28.	"	" 10	200	" 1/2 of 8	64
ontague.	8	" 17	140	" 1/2 of 28	43
of 8.	7	" 4	50	No. 28	6
4 and 14.	8	West 1/2 of 11	100	North Crosby.	
8 and 23.	"	No. 10	200	No. 11 21 23	200
of 16.	"	" 17 22	100	" 5	80
22.	9	" 11	160	" 15 20 26	200
23.	10	" 10 15	200	" 11 21	"
9.	"	" 20	30	" 23	150
23.	1	" 11 South	50	" 15 20	200
9.	2	South 1/2 of 3	40	" 4 11 21 23	"
16.	3	Leads.		" 5 15 20 25	"
14.	4	South 1/2 of 9	100	" 4 21 23	"
16.	"	No. 10 22	200	" 5 20 25	"
of 22 and 29.	"	East 1/2 of 3 17	100	" 4 11 21 23	"
6.	5	" 1/2 of 4 14 21	"	" 5 15 20	100
of 23 and 28.	6	No. 22	120	South Crosby.	
eth Town.	7	" 21	200	No. 4.	60
10 11 17 18.	8	East 1/2 of 11	100	" 5	200
	9	No. 9	10	" 4	"
	"	" 10	36	" 23	185
	2	Kitley.		South half of 5	100
	"	No. 16	200	No. 15	200
	3	South 1/2 of 23	100	" 4	"
		North 1/2 of 29	"	" 21	170

JOHNSTOWN DIST.—BATHURST DIST.

South Crosby continued.			BATHURST DISTRICT.		
Con.	LOTS.	Acres.	Con.	Township of Nepean, on the Ottawa.	Acres.
6	No. 5 26.	204			
	South half of 15	100			
	No. 27	56	A.	North $\frac{1}{2}$ of 3	100
7	" 4	200	1	No. 3	200
	" 21	100		<i>On the Rideau.</i>	
	" 23	190	2	No. 4	164
8	" 5	170	"	" 18 24	200
	" 15	56	"	East $\frac{3}{4}$ of 32	150
9	" 4	90	3	" 3 13 33	200
	" 21	170	"	East $\frac{1}{2}$ of 23	100
	" 11 23	200	4	No. 4 9 14	200
10	" 15	25	"	East $\frac{1}{2}$ of 19	100
	" 20 25	96	5	No. 3	200
	<i>Burgess.</i>		6	" 4	"
1	No 14	60	"	South $\frac{1}{2}$ of 18	100
	" 27	32		<i>Goulburn.</i>	
2	" 3	200	1	No. 14	200
	" 8	170	2	West half of 3	100
	" 23	40	3	East $\frac{1}{2}$ of 14	"
3	" 4	200	4	" half of 8	"
	" 14	120	5	No. 22	200
	" 27	32	6	Part of 27	150
4	" 3	176	6	No. 23	200
	" 8	130	7	" 14 27	"
	" 16 23	200	8	East $\frac{1}{2}$ of 23	100
5	" 4	100	9	No. 14	200
	" 14 22	200	10	" 8 16	"
	" 27	32	11	" 4 14	"
7	" 4	40	12	" 8	166
	" 22	200	"	" 16	155
	" 16	"		<i>March.</i>	
10	" 23	"	1	No. 14 19 22 23 25	200
	<i>Emsley.</i>		2	West half of 4	100
1	No. 29	13	3	" 16 23 25	200
4	" 8	200	4	East half of 3	100
5	West $\frac{1}{2}$ of 4.	100	5	No. 4 22	200
6	No. 3 8	200	6	" 16 23	"
	" 16	42	7	" 14	"
8	" 3 8 23	200	8	" 27	100
	" 23	40	9	West half of 4 27	100
9	" 4	200	10	No. 27	"
10	" 3	"	11	" 27	"
		100	12	" 27	"
				" 3	68

Con.	No.
1	No.
"	"
2	"
"	W
3	No
"	Ea
"	No
4	"
5	"
"	W
6	No
7	"
"	"
8	"
9	"
"	"
10	"
11	"
12	"
"	"
"	"
1	No
2	"
3	"
4	"
5	"
6	"
7	"
8	"
1	N
2	"
3	"
4	"
5	V
6	M
7	"
8	E
9	M

BATHURST DISTRICT.

ACT.		Huntly.		Fitzroy continued,		Acre	
n, on		Lots.		Lots.			
Acre.		Con.	Acre.	Con.	Acre.	Acre	
		1	No. 4 14 22	200	9	No. 4 14	200
		"	" 27	110	10	" 3 8	200
		2	" 3 8 23	200	11	" 4 14 16	200
100		"	West half of 16	100	12	" 3 8 16	165
200		3	No. 22	200	<i>Pakenham.</i>		
	164	"	East 1/2 of 14	100	1	No. 4 14 22	200
	200	"	No. 27	116	2	" 3 8 16 19 23	200
	150	4	" 3 8 23	200	3	" 4 14 22 25	200
	200	5	" 4 14	"	4	" 3 8 23 16	200
	100	"	West half of 22	100	5	" 4 14 22	200
	200	6	No. 3 8 16 23	200	6	" 3 8 16 2	200
	100	7	" 4 14 22	"	7	" 14 19 22	200
	200	"	" 27	128	8	" 8 16 23	200
	"	8	" 3 8 16 23	200	"	West 1/2 of 3	100
	100	9	" 4 14 22	"	9	No. 4 14 22	200
		"	" 27	133	10	" 3 8 16 19 23	200
	200	10	" 3 8 16 23	200	11	" 4 14 22	200
	100	"	" 4 14 22	"	12	" 3 8	162
	"	11	" 3 8	165	<i>Beckwith.</i>		
	"	"	" 16	170	1	No. 22	200
	200	"	" 23	180	2	East 1/2 of 23	100
	150	<i>Torbolton.</i>			5	No. 14 26	200
	200	1	No. 4 11 14 22	200	6	" 16	"
	"	2	" 3 8 16 23	"	7	West 1/2 of 22	100
	100	3	" 4 14 22	"	"	" No. 27	125
	200	4	" 3 8	"	9	" 22	200
	"	"	" 23	45	10	West 1/2 of 16	100
	"	5	" 4	200	<i>Drummond.</i>		
	166	"	" 14	63	2	East half of 28	100
	155	6	" 3 8	200	3	No. 4 22	200
		7	" 4	"	"	" 27	"
	200	8	" 3	54	4	East 1/2 of 3	100
	100	<i>Fitzroy.</i>			5	No. 4	200
	200	1	No. 4 22	200	9	East 1/2 of 14	100
	100	2	" 3 8 16 23	"	10	No. 16	170
	200	3	" 4 14 22	"	<i>Bathurst.</i>		
	"	4	" 3 8 16	"	8	No. 3	167
	"	5	" 4 22	"	9	" 4	80
	100	"	West 1/2 of 14	100	10	West 1/2 of 3	100
	100	6	No. 3 8 16 23	200	"	No. 8	66
	"	7	" 14 22	"	11	East 1/2 of 14	165
	"	"	East 1/2 of 4	100	12	No. 8	100
	"	8	No. 3 8 16 23	200			



## BATHURST DISTRICT—continued.

North Sherbrooke.			Ramsay continued.		
Con.	Lots.	Acres.	Con.	Lots.	Acres
1	No. 4 14 22	200	8	Front $\frac{1}{2}$ of 3	100
"	" 27	118	9	No. 4 22	200
2	" 3 8 16	200	"	" 27	92
"	" 23	150	10	" 8 23	200
3	" 4 14	200	11	" 14 22	"
4	" 3 8	"	"	" 27	92
5	" 4	162	12	" 3 8 23	200
South Sherbrooke.			East half of 15		
1	No. 4 21	200	Lanark.		
"	East half of 11	100	1	No. 4 14 22	200
2	No. 5	"	"	" 27	100
3	" 21	200	2	" 23	200
4	" 5	"	3	" 14	"
"	" 15	"	"	" 27	100
"	West half of 20	100	"	East half of 22	"
5	No. 4	156	4	No. 8 16 23	200
"	" 11 21	200	"	" 2	170
6	" 10 15	"	"	" 27	100
7	" 11	"	6	" 2	194
8	" 15	"	"	" 3 8 23	200
"	" 20	144	7	" 1	188
9	" 11	200	"	" 3 4 14	200
10	" 10 15	"	"	" 22	142
11	" 11	"	"	" 27	100
"	East half of 21	100	8	" 3	200
12	No. 15 20	200	"	" 8	195
Ramsay.			"	" 16	155
1	" 4 22	200	"	" 23	190
"	" 27	92	9	" 14 22	200
"	East half of 14	100	"	" 27	100
"	West $\frac{1}{2}$ of 3 & East of 8	"	10	" 3 16 23	200
"	No. 23	200	11	" 4 22	"
3	" 4 14 22	"	"	West half of 14	100
"	" 27	92	"	No. 27	"
4	" 8 23	200	12	" 23	165
"	East half of 15	100	"	Rear part of 8	65
"	West half of 3	"	Dalhousie.		
5	No. 4 14 22	200	1	No. 4 14 22	200
"	" 27	92	"	" 27	100
6	" 3 8 15	200	2	" 3 8 16 23	200
7	" 4	"	3	" 4 14 22	"
"	West half of 14	100	"	" 27	92
"	No. 27	92	4	" 3 8 16 23	200

BATHURST DISTRICT—MIDLAND DISTRICT.

ued.

ntnued.

Acres
100
200
92
200
"
92
200
100
200
100
200
"
100
"
200
170
100
194
200
188
200
142
100
200
195
155
190
200
100
200
"
100
"
165
65
200
100
200
"
95
200

<i>Dalhousie continued.</i>			<i>Lavant continued.</i>		
Con.	LOTS.	Acres	Con.	LOTS.	Acres
5	No. 2 14 22	200	6	No. 3 8 12 16 23	200
"	" 27	80	7	" 4 14 22	200
6	" 8 16 23	200	8	" 3 8 16	200
"	South West half of 9	100	"	" 23	180
7	No. 4 14 22	200	9	" 4 14	200
"	" 27	70	"	" 22	196
8	" 3 16 23	200	10	" 25	96
9	" 4 14 22	100	11	" 3 8 12 16	200
"	" 27	200	12	West 1/2 of 14	96
10	" 3 16 23	60	13	No. 3	200
"	North 1/2 of 8	100	14	" 8	114
11	No. 4 14 22	200	15	" 3	96
"	" 27	50			
12	" 3 8 16 23	165			
	<i>Darling.</i>			<b>MIDLAND DISTRICT.</b>	
1	No. 4 14 19 22	200	4	<i>Township of Pittsbrgh</i>	
2	" 3 8 16 23	"	5	No. 13 21 23 29	200
3	" 4 19 22	"	"	" 23 25 27 29 31 33	200
"	" 14	185	6	35	
4	" 3 16 23	200	7	" 2 5 26 30 34 38	200
"	" 8	160	8	" 5 10 11 29 37	200
5	" 4 14 19 22	200	"	" 1 2 11 12 15 16 17	200
6	" 3 8 16 23	"	"	" 23	144
7	" 4 22	"	"	North 1/2 of 4	100
"	" 14	195	"	South 1/2 of 6	100
8	" 3 8 16 19	200	9	No. 4 30 31 32 33 34 36	200
"	" 23	117	"	" 18	124
9	" 4	185	10	" 27	164
"	" 14	200	"	" 15	200
"	" 22	100	"	" 22	147
10	" 3 8 16	200	"	" 24	162
"	" 23	80	"	" 27	153
11	" 4	200	"	" 29	148
12	" 3 8 16 23,	162	11	" 5 21 28 34	200
"	" 19,	157	"	" 11	109
	<i>Lavant.</i>		12	" 3 9	200
1	No. 4 14 22	200	"	" 16	140
2	" 3 8 16	"	"	" 24	154
"	" 23	172	"	" 30	93
3	" 4 14 22	200	13	" 5 11 21 28	200
4	" 3 8 16	"	14	" 3 9	200
"	" 23	170	"	" 16	125
5	" 4 14 22	200	15	" 5	47
			"	" 11 21	100

MIDLAND DISTRICT.

Loughborough.			Palmerston continued.		
Con.	LOTS.	Acres	Con.	LOTS.	Acres
1	No. 23	200	5	No. 4 11 21 28	200
3	" 23	135	6	" 3 9 16 24 30	"
4	" 15	200	7	" 4 11 21 28	"
5	" 2	"	8	" 3 16 24	"
"	" 21	160	"	" 9	170
6	" 15 24	200	"	" 30	200
7	" 11 21 23	"	9	" 4 11 21 28	"
8	" 5 24	200	10	" 3 16 24 30	"
"	South $\frac{1}{2}$ of 15	100	"	" 9	180
9	No. 4 11 21 23	200	11	No. 4 11 21 28	105
10	" 5 15 24	"	Camden East.		
11	" 4 11 21 23	"	2	East $\frac{1}{2}$ of 4	100
12	" 5 15 24	"	"	No. 30 37 46	200
13	" 4 11 21 23	"	"	" 33 35	150
14	" 5 15 24	"	3	" 7 27 50	200
Portland.			4	East half of 33	100
2	No. 6	200	5	No. 2 8 25 31 37	200
"	" 15	117	"	" 1 6 10 14 19 21 26	"
"	" 4	200	"	27	200
4	" 6	"	"	" 32	40
"	" 17	120	"	<del>34</del>	130
5	" 18	135	"	" 1 2 8 9 13 15 20 45	"
6	" 6 11 17	200	"	51	200
7	" 19	"	7	" 1 6 7 14 19 21 26	"
8	" 6 11	"	"	32 47	200
"	" 17	164	8	" 2 5 9 11 13 21 23	"
9	" 7	140	"	27 29 33 35 38 45 51	200
"	" 19	200	9	" 2 3 5 7 9 11 13 15	"
10	" 6 11 17	"	"	21 23 25 27 29 31 33	"
"	" 24	13	"	35 37 41 47	200
11	" 7 19	200	Richmond.		
12	" 6 11 17 24	"	5	No. 1 3 8 10	200
13	" 7	95	6	" 3 15	"
"	" 19 25	200	7	" 2 8 14 23	"
14	" 6 11 17 24	"	"	" 24	190
Palmerston.			8	" 4 5 8 10 11 14 16	200
1	No. 4	160	9	" 3	100
"	" 11 28	200	"	" 5 7 9 11 14 15 16	"
2	" 3 9 16 24	"	10	" 17 20	200
"	" 30	150	"	" 1	150
3	" 4 21 28	200	"	" 8 13 17	200
"	" 11	190	11	" 3 9	"
4	" 3 9 16 24 30	200			

MIDLAND DISTRICT.

*continued.*

	Acres
28	200
4 30	"
28	"
	170
	200
28	"
30	"
	180
28	105
<i>East.</i>	
	100
	200
	150
	200
3	100
37	200
19 21 26	
	200
	40
	130
15 20 45	
	200
19 21 26	
	200
13 21 23	
38 45 51	200
1 13 15	
29 31 33	
	200
<i>d.</i>	
	200
	"
	190
14 16	200
	100
15 16	
	200
	150
	200
	"

Sheffield.		Tyendinga continued.	
Con.	LOTS.	Acres	Con.
1	No. 5 11 21 28	200	4
2	" 3 9 16 24 30	"	"
3	No. 5	"	"
"	" 11 21 28	"	"
4	" 3 16	"	4
"	" 24	"	5
"	" 30	130	8
5	No. 5 21 28	200	9
"	" 11	110	"
6	" 3 16 24	200	6
7	" 5 21 28	"	7
"	" 11	184	"
8	" 3 16 24	200	"
9	" 5 11 21	"	8
"	" 28	30	"
10	" 3 16 24	200	9
11	" 5 11 21	"	"
12	" 3 16 24	"	1
13	" 5 11	"	1
"	" 21	175	"
14	" 3 16 24	200	2
15	" 5 11 (21 supposed a Clergy.)	"	3
16	" 16	50	4
"	" 24	55	5
	<i>Kaladar.</i>		6
1	No. 5 11 21 28	200	7
2	" 3 9 16 24 30	"	"
3	" 5 11 21 28	"	8
4	" 3 9 16 24 30	"	"
5	" 5 11 21 28	"	9
6	" 3 9 16 24 30	"	"
7	" 5 11 28	"	10
"	" 21	180	"
8	" 3 9 16 24 30	200	11
9	" 5 11 21 28	"	12
10	" 3 9 16 24 30	"	13
11	" 5 11 18 21 28	142	"
	<i>Tyendinga.</i>		14
1	No. 35	200	"
2	" 5 15 20 29	"	"
"	North $\frac{1}{2}$ of 39	100	"
3	No. 4 11 21 23 28 35	200	"

Acres
100
100
100
200
"
"
200
"
200
"
200
200
200
200
200
114
200
"
"
"
"
"
200
67
200
180
200
180
200
180
200
188
200
"
"
31
191
185
176
180
171

MIDLAND DISTRICT.

Huntingdon.			Marmora continued.		
Con	LOTS.	Acres.	Con.	LOTS.	Acres
1	No. 16	200	6	" 3 16 24 30	200
2	" 15	200	7	" 5 11 19 21 28	200
3	" 20	100	8	" 3 16 24 30	200
4	South 1/2 of 5 & E 1/2 15	100	9	" 5 11 19 21 28	200
5	No. 4 11 19	200	10	" 3 16 24 30	200
6	" 3 10 17	200	11	" 5 11 13 19 21 28	135
7	" 2 9 16	200	<i>Madoc</i>		
8	" 5 15	200	1	No. 5 11 28	200
9	" 20	100	2	" 3 9 16 24 30,	200
10	" 4 11 19	200	3	" 5 11 21 28	200
11	" 3 10 17	200	4	West 1/2 of 4	100
12	" 2 9 16	200	5	West 1/2 of 3	100
13	" 5 15	200	6	No. 9 16 24 30	200
14	" 20	200	7	" 5 11 21 28	200
15	" 4 11 19	200	8	" 3 9 24 30	200
16	" 3 10 17	200	9	" 16	158
17	" 2 9 16	200	10	" 5 11 21 28	200
18	" 5 15	200	11	" 3 9 16 24 30	200
19	" 20	80	12	" 5 11 21 28	200
<i>Rawdon.</i>			13	" 3 9 16 24 30	200
1	No. 4	200	14	" 5 11 21 28	135
2	" 5 20	200	<i>Elzevir.</i>		
3	" 4 11	200	1	No. 5 11 21 28	200
4	" 5 15 20	200	2	" 3 9 16 24 30	200
5	" 4 11 21	200	3	" 5 11 21 28	200
6	" 5 8 15 20	200	4	" 3 9 16 24 30	200
7	" 2 11 21 23	200	5	" 5 11 21 28	200
8	" 5 15 20	200	6	" 3 9 16 24 30	200
9	" 4 11 21 23	200	7	" 5 11 21 28	200
10	" 5 15 20	200	8	" 3 9 16 24 30	200
11	" 4 11 21 23	200	9	" 5 11 18 21 28	200
12	" 5 15 20	200	10	" 3 9 16 24 30	200
13	" 4 11 21 23	200	11	" 5 11 21 23 26 28	124
14	" 5 15 20	200	<i>Lake.</i>		
<i>Marmora.</i>			1	No. 5 11 19 28	200
1	No. 5 19 21 28	200	2	" 21	160
2	" 11	140	3	" 3 16 24 30	200
3	" 3 16 24 30	200	4	" 5 11 28	200
4	" 11	160	5	" 19	80
5	" 19 21 28	200	6	" 21	175
6	" 16 24	200	7	" 3 16 24 30	200
7	" 30	130	8	" 5 11 19 21 28	200
8	" 19 21 28	200	9	" 3 24 30	200

10  
C  
2 No

NEWCASTLE DISTRICT.

continued.	Acres
30	200
21 28	200
30	200
21 28	200
30	200
19 21 28	135
oc	
	200
4 30,	200
28	200
	100
	100
30	200
28	200
	200
	158
8	200
30	200
3	200
30	200
3	135
r.	
8	200
30	200
	200
30	200
0.	200
28	200
0	200
26 28	124
	200
	160
	200
	200
	200
	80
	175
	200
8	200
	200

Lots continued.		Cramahé continued.	
Con.	Acres	Con.	Acres
6	" 16	3	North $\frac{1}{2}$ of 5
7	" 5 11 19 21	"	East half of 11
"	" 28	4	No. 16 30
8	" 3 16	5	" 21 28
"	" 24	"	East half of 11
"	" 30	6	No. 3 24 30
9	" 5 11 19 21	7	" 21 28
"	" 28	"	North $\frac{1}{2}$ of 34
10	" 3 16 24	8	" 16 24 30
"	" 30	9	" 5 21 28 34
11	" 5 11 19 21	10	" 3 9 16 24 30
"	" 28		Haldimand.
		3	No. 5
	Hallowell	4	" 3 16
5	No. 5	5	" 5 11 21 34
"	" 7 8	6	" 3 9 16 24 30
"	" 9	7	" 5 11 21 28 34
"	" 10	8	" 3 9 16 24 30
"	" 11 14	9	" 5 11 21 38 34
"	" 12 13	10	" 3 16 24 30
"	" 15 16		Hamilton.
"	" 17	4	No. 9
"	" 18	5	" 5 11 21 28
		6	" 3 9 24 30
		"	North $\frac{1}{2}$ of 16
		7	" 5 11 21
		8	" 3 9
		9	" 34
		10	" 30
			Seymour.
		1	No. 4 11 23
		"	" 21
		2	" 15 20
		3	" 4 11 21 23
		4	" 5 15 20
		5	" 4 11 21 23
		6	" 5 15 20
		7	" 4 21 23
		8	" 5 20
		"	" 15
		"	4 11 21 23
		10	5 20
		"	15

NEWCASTLE DISTRICT  
Murray.

2	No. 24 30	200
3	" 20 21	"
4	" 24 30	"
5	" 5	"
6	" 24	"
7	West $\frac{1}{2}$ of 3	100
8	" 5 21 28	200
9	South $\frac{1}{2}$ of 3	100
10	No. 24 30	200
11	South $\frac{1}{2}$ of 5	100
12	East $\frac{1}{2}$ of 11	100
13	No. 21 28 34	200
14	" 9 16 24 30	100
15	" 32	90
16	" 35	55
17	" 36	30
	Cramahé.	
2	North $\frac{1}{2}$ of 16	100

D

## NEWCASTLE DISTRICT—Continued.

Seymour Continued			Otanabee continued.			Acres
Con.	LOTS.	Acres.	Con.	LOTS.	Acres	Acres
11	No. 4 11 23	200	7	No. 21 28	200	200
"	" 21	180	"	" 11	95	95
12	" 5 20	200	8	" 9 24 30	200	200
13	" 4 21 23	200	"	West $\frac{1}{2}$ of 16	100	100
"	" 11	120	9	No. 21 28	200	200
14	" 5	186	"	East $\frac{1}{2}$ of 11	100	100
"	" 15 20	200	10	No. 9 24 30	200	200
15	" 4	30	"	West $\frac{1}{2}$ of 16	100	100
"	" 11 21 23	38	11	West half of 28	100	100
	<i>Percy.</i>		12	No. 9	57	57
1	No. 4 11 23	200	"	" 16 24	200	200
2	" 5	200	13	" 21	200	200
3	" 4 11	200	14	" 16	200	200
4	" 5	200	15	" 21	200	200
5	" 4 11 21 23	200	16	" 16	200	200
6	" 5 15	200	17	" 11	186	186
7	" 4 11 23	200		<i>Monaghan.</i>		
8	" 5 15 20	200		No. 15	200	200
9	" 4 11 23	200	3	" 14	200	200
10	" 5 15 20	200	5	" 14	40	40
11	" 4	163	6	" 4	200	200
"	" 11	193	7	" 5	192	192
"	" 21 23	200	8	" 4	200	200
12	" 15	128	9	" 5	200	200
"	" 20	200	13	" 5	200	200
13	" 21 23	200		<i>Asphodel.</i>		
	<i>Alhwick.</i>		1	No. 5 19	200	200
1	No. 4 11 21 23	200	2	" 3 16	200	200
2	" 15 20	200	3	" 5 11 19	200	200
"	" 5	117	4	" 16	200	200
3	" 11 21 23	200	5	" 5 11 19	200	200
4	" 15 20	200	6	" 9 16	200	200
5	" 21 23	200	7	" 5 11 19	200	200
6	" 15	60	8	" 9 16	200	200
"	" 20	200	9	" 5	30	30
7	" 21	36	10	" 11	200	200
	<i>Otanabee.</i>		10	" 9 16 19	200	200
1	No. 21 28	200	11	" 11	200	200
2	" 16 24 30	200	12	" 9	20	20
3	" 28	200	"	" 16	160	160
4	" 16 24 30	200		<i>Belmont.</i>		
5	" 21 28	200	1	No. 3 16 24	200	200
6	" 9 24 30	200	"	" 30	190	190

NEWCASTLE DISTRICT.—continued.

Belmont continued.		Douro continued.	
Con.	LGTS.	Aeres.	Can.
2	No. 5 11 19 21	200	1
"	" 28	30	2
3	" 3 30	200	3
"	" 16	33	4
"	" 24	142	5
4	" 5 11	200	6
"	" 19	80	7
"	" 21	98	"
"	" 28	186	8
5	" 3 24 30	200	"
"	" 16	20	9
6	" 5 19 22 28	290	"
"	" 11	189	"
7	" 3 24 30	200	10
"	" 16	124	"
8	" 5 11 21 28	200	"
"	" 19	175	1
9	" 3 16 24 30	200	2
10	" 5 11 19 21 28	200	3
11	" 3 16 24 30	200	"
12	" 5 11 19 21 28	60	4
<i>Dummer.</i>			
1	No. 5 11 21	200	5
"	" 28	196	6
2	" 3 9 16 24	200	7
3	" 5 11 21 28	200	8
4	" 3 9 16 24	200	9
"	" 30	109	"
5	" 5 11 21 28	200	10
6	" 3 9 16 30	200	11
"	" 24	180	12
"	" 32	135	"
7	" 5 11 21 28	200	13
8	" 3 9 16 24 30	200	14
9	" 5 21 28	200	"
"	" 11	160	"
10	" 3 9 16 24 30	200	15
11	" 5 11 21 28	200	"
12	" 3 9 16	165	"
"	" 24	158	"
"	" 30	161	"
<i>Douro.</i>			
1	No. 5 11 21	200	"

Douro continued.		Aeres
Can.	LOTS.	
1	No. 28	66
2	" 3 9 16 24	200
3	" 5 11 21	"
4	" 3 9 16 24	"
5	" 5 11 21	"
6	" 3 9 16	"
7	" 5 11	"
"	" 21	90
8	" 3 9	200
"	" 16	60
9	" 5	200
"	" 10	135
"	" 11	22
10	" 13	200
"	" 9	42
<i>Smith.</i>		
1	No. 4	200
2	" 5	"
3	" 4	"
"	" 21	66
4	" 5 15	200
5	North $\frac{1}{2}$ of 30	100
6	No. 15 20	200
"	" 27	194
7	" 21	200
8	" 20 27	"
9	" 21 24	173
"	" 28	200
10	" 20 27	"
11	" 21 28	57
12	" 27 34	200
"	" 20	"
13	" 28 38	198
14	" 27	200
"	" 34	126
"	No. 44	40
15	" 20	142
"	" 21	200
"	" 28 38	25
16	" 22	200
"	" 27	39
"	" 34	186
"	" 44	"



## NEWCASTLE DISTRICT.—continued.

Smith continued.		Methuen continued.		Acres
Con.	LOTS.	Con.	LOTS.	
17	No. 24	62	" 16	200
"	" 28	200	" " 24	40
"	" 38	30	" " 30	190
18	" 27	60	12 " 5 11 19 21	64
	<i>Emily Gore.</i>		" " 28	48
1	No. 4	175		
2	" 5	164	1 No. 5	190
3	" 4	200	" " 11 21	200
"	" 9	120	" " 28	120
4	" 5	200	2 " 3 9 16 24 30	200
5	" 4	200	3 " 5 21	"
"	North $\frac{1}{2}$ of 11	100	" " 11	17
6	No. 5	200	" " 28	195
"	" 15	65	4 " 3 9 16 24 30	200
7	" 4 11	200	5 " 5 21 28	"
8	" 5	200	" " 11	196
"	" 15	133	6 " 3 9 16 24 30	200
"	" 10	195	7 " 5 11 21 28	"
9	" 4	200	8 " 3	38
10	" 5	200	" " 9 16 30	200
	<i>Methuen.</i>		" " 24	189
1	No. 3 16 24 30	200	9 " 5 11 21 28	200
2	" 5 11 19 21 28	200	10 " 3	"
3	" 3 16 30	200	" " 9 16 24 30	"
"	" 24	178	11 " 5 11 21 28	"
4	" 5 19 21 28	200	12 " 3 9 30	166
"	" 11	20	" " 16	160
5	" 3 24 30	200	" " 24	153
"	" 16	140		
6	" 5	59	1 No. 9 16 24	200
"	" 11 19 21 28	200	" " 30	189
7	" 3	100	2 " 11 21 28	200
"	" 16	190	3 " 9 16	"
"	" 24 30	200	" " 24	180
8	" 11	198	" " 30	192
"	" 5 19 21	200	4 " 11 21 28	200
"	" 28	91	5 " 9	155
9	" 3	150	" " 16 24 30	200
"	" 16	200	6 " 11 21 28	"
"	" 24	7	7 " 9	50
"	" 30	102	" " 16 24 30	200
10	" 5 11 19 21 28	200	8 " 11 21 28	"
11	" 3	160	9 No. 9 16 24 30	"

Con.	Acres
10	
"	
11	
"	
12	
"	
13	
"	
14	
"	
15	
16	
"	
17	
"	
18	
"	
19	
"	
5 No.	
6	
7	
8	
9	
10	
1 No.	
2	
" Sou.	
3 No.	
4	
" Sou.	
6 Nor.	
7 No.	
" Nor.	
8	
9 No.	
" Nor.	
10 Sou.	
12 Wes.	
" Nor.	
13 No.	
14	

NEWCASTLE DISTRICT.—continued.

d.

ed.

Acres  
200  
40  
190  
64  
48  
  
190  
200  
120  
200  
"  
17  
195  
200  
"  
196  
200  
"  
"  
38  
200  
189  
200  
"  
"  
186  
180  
153  
  
200  
189  
200  
"  
180  
192  
200  
155  
200  
200  
"  
60  
200  
"

Harvey continued.			Cavan Continued.		
Con.	Acres.	LOTS.	Con.	Acres.	LOTS.
10	200	" 11 21 28	14	200	East ½ 15
"	25	" 5	"	25	Clarke.
11	125	" 3	3	125	No. 5 21
"	200	" 9 16 24 30	4	200	" 16 30
12	105	" 5 21 28	5	105	" 5 11 21 28 34
"	200	" 11	6	200	" 9 16 24 30
13	200	" 3 9 24 30	7	200	" 3 5 11 21 28 34
"	185	" 16	8	185	" 3 9 16 24 30
14	200	" 5 11 21 28	9	200	" 5 11 21 28
15	"	" 3 9 24 30	10	"	" 9 16 24 30
16	175	" 5 21 28			Manvers.
"	200	" 11	1	175	No. 4 11 21 23
17	65	" 3 24 30 32	2	200	" 5 15 20
"	200	" 9	3	65	" 4 11 21 23
18	200	" 21 28	4	200	" 5 15 20
19	63	" 3	5	63	" 4 11 21 23
"	130	" 9	6	130	" 5 15 20 25
"	156	" 16 24 30	7	156	" 4 11 21 23
		Hope.	8		" 5 15 20
5	200	No. 21 34	9	200	" 4 11 21 23
6	"	" 3 24 80	10	"	" 5 15 20
7	"	" 28 34	11	"	" 4 11 21 23
8	"	" 3 9 16 24 30	12	"	" 5 15 20
9	"	" 5 11 21 28 34	13	"	" 4 11 21 23
10	100	" 3 9 16 24 30	14	"	" 5 15 20
		Cavan.			Emily.
1	200	No. 4 11	1	200	No. 4 11 21
2	"	" 4 5	2	"	" 5 20
"	100	" South ½ of 15	"	100	North ½ of 15
3	200	No. 4	3	200	No. 4 11
4	"	" 5	"	"	North ½ of 21
"	100	" South ½ of 11	4	100	No. 15 20 22
6	"	North ½ of 5	"	"	North ½ of 5
7	200	No. 4 21	5	200	No. 4 21
"	100	North ½ of 11	"	100	North ½ of 11
8	"	" ½ of 15	6	"	No. 5 15 20 22
9	200	No. 11 19 21	7	200	" 4 11 21
"	100	North ½ of 4	8	100	" 5 15 20
10	"	South ½ of 5	"	"	" 4 11 21
12	"	West ½ of 5	9	"	" 15 20
"	"	North ½ of 15	"	"	North ½ of 5
13	200	No. 4 21	11	200	No. 4 11 21
14	200	" 5 20	12	200	" 5 15 20

NEWCASTLE DIST.—HOME DISTRICT.

<i>Emily continued.</i>			<i>Darlington.</i>		
Con.	LOTS.	Acres.	Con.	LOTS.	Acres.
13	" 4 11 21	200	2	North $\frac{1}{2}$ of 24	100
14	" 5 15 20	200	3	No. 5 21 28 34	200
<i>Mariposa.</i>					
1	No. 4 11 21 23	200	4	" 3 9 16 24	200
2	" 5 15 20	200	5	" 5 11 21 28	200
3	" 4 11 21 23	200	"	East $\frac{1}{2}$ of 34	200
4	" 5 15 20	200	6	" 3 9 16 24 30	200
5	" 4 11 21 23	200	7	" 5 11 21 28 34	200
6	" 5 15 20	200	8	" 3 9 16 24 30	200
7	" 4 11 21 23	200	9	" 5 11 21 28 34	200
8	" 5 15 20	200	10	" 3 9 16 24 30	100
9	" 4 11 21 23	200	HOME DISTRICT.		
10	" 5 15 20	200	<i>Whitby.</i>		
11	" 4 11 21 23	200	3	No. 34	200
12	" 5 15 20	200	4	" 9 16 30	200
13	" 4 11 21 23	200	"	North $\frac{1}{2}$ of 3	100
14	" 5 15 20	200	5	" 5 11 21 28 34	200
15	" 4 11 21 23	200	6	" 3 9 16 24 30	200
<i>Cartwright.</i>					
1	No. 4 11 21 23	200	7	" 5 11 21 28 34	200
2	" 5 15 20	200	8	" 3 9 16 24 30	200
3	" 4 11 21 23	200	9	" 5 11 21 28 34	200
4	" 5 15 20	200	<i>Reach.</i>		
5	" 4 11 21 23	200	1	No. 4 11 21 23	200
6	" 5 15 20	200	2	" 5 15 20	200
7	" 4 11 21 23	200	3	" 4 11 21 23	200
8	" 5	195	4	" 5 15 20	200
"	" 15 20	200	5	" 4 11 21 23	200
9	" 4 21 23	200	6	" 5 15 20	200
10	" 5	200	7	" 4 11 21 23	200
"	" 20	145	8	" 5 15 20	200
11	" 4	192	9	" 4 11 21 23	200
"	" 21	80	10	" 5 15 20	200
"	" 23	200	11	" 4 11 21 23	200
12	" 5	120	12	" 5 15 20	200
"	" 15	130	13	" 4 11 21 23	200
"	" 20	110	14	" 5 15 20	200
"	" 21	190	<i>Brock.</i>		
"	" 23	200	1	No. 4 11 21 23	200
"	" 5	150	2	" 5 15 20	200
"	" 15	170	3	" 11 21 23	200
"	" 20	200	4	" 5 15 20	200
			5	" 4 11 21 23	200
			6	" 5 15 20	200

DISTRICT.

HOME DISTRICT.—continued.

rrlington. LOTS.	Acres.
of 24	100
28 34	200
6 24	200
21 28	200
34	200
6 24 30	200
21 28 34	200
6 24 30	200
21 28 34	200
6 24 30	100

DISTRICT.  
thiby.

0	200
3	100
1 28 34	200
24 30	200
1 28 34	200
24 30	200
1 28 34	200
each.	
21 23	200
0	200
1 23	200
0	200
23	200
0	200
1 23	200
0	200
23	200
0	200
23	200
0	200
23	200
0	200
23	200
0	200
23	200
0	200
23	200
0	200

Brook, continued.

Con.	LOTS.	Acres.
7	No. 4 21 23	200
8	" 5 20	200
9	" 4 11 21 23	200
10	" 5 15 20	200
11	" 4 11 21 23	200
12	" 5 15 20	200
13	" 4 11 21 28	200
14	" 5 15 20	200
<i>Georgina.</i>		
1	" 4 11 21 23	200
2	" 5 15 20	200
3	" 4 11 21 23	200
4	" 5 15 20	200
5	" 4 11 21	200
6	" 15 19	200
7	" 4 <del>21</del>	200
"	" 23	177
8	" 15	42
<i>Scott.</i>		
1	No. 5 11 21 28 34	200
2	" 3 9 16 24 30	200
3	" 5 11 21 28 34	200
4	" 3 9 16 24 30	200
5	" 5 11 21 28 34	200
6	" 3 9 16 24 30	200
7	" 21 28 34	200
8	" 3 9 16 24 30	25
<i>Uzbridge.</i>		
1	No. 9 16 24 30 36	200
2	" 11 21 28 34	"
3	" 3 9 16 24 36	"
4	" 5 11 21 28 34	"
5	" 3 9 16 24 36	"
6	" 5 11 21 28	"
7	" 3 9 16 24 30 36	"
8	" 5 11 21 28 34	25
<i>Whitchurch.</i>		
4	No. 12	200
5	" 15	"
6	" 6 12 20 27 33	"
7	" 16 17 18 19 20 21 28 34	200
8	" 12 20 27 33	"

Con.	LOTS.	Acres.
9	" 11	200
"	" 28	120
"	" 34	88
<i>Pickering.</i>		
1	" 34	200
2	" 30	"
3	" 21 28 34	"
"	North 1/2 of 5	100
4	South 1/2 of 30	"
"	North 1/2 of 9	"
5	No. 11 34	200
"	South 1/2 of 5	100
6	" 3 9 30	200
7	No. 5 11 21 28	"
8	" 3 9 16 24 30	"
9	" 5 11 28	"
<i>Scarborough.</i>		
2	No. 9	200
3	" 5	"
"	South 1/2 of 21	100
4	" 3 9	200
"	North 1/2 of 30	100
A	" 34	100
<i>Markham.</i>		
11	" 11	6
<i>Gwillimbury East.</i>		
2	No. 27 33	200
3	" 34	"
4	" 33	"
5	" 5 19 21 28 35	"
6	" 6 12 14 18 20 27 33	"
7	" 5 11 21 28 34	"
8	" 6 12 20 27 33	"
9	" 5	50
<i>Gwillimbury North.</i>		
2	No. 5	50
3	" 11	190
4	" 6 20	200
5	" 5 21	"
6	No. 6 12 20	"
7	" 5 11 21	"
8	" 6	76
"	" 12	50

HOME DISTRICT.—continued.

Guilimbury North cont.			Chinguacousy, East of Hurontario Street.		
Co.	LOTS	Acres.	Co.	LOTS	Acres.
	No. 5 Lake Con.	210	1	No. 22 28 32	200
	" 11	256	"	West 1/2 of 18	100
	" 19	230	2	West 1/2 of 26	100
	King.		3	No. 20	200
2	No. 12	200	4	West 1/2 of 6	100
3	" 2 15 31	200	"	No. 22 28	200
"	Vest 1/2 of 25	100	4	" 15 26 34	200
4	" 6 12 20	200	5	" 22 28 32	200
5	" 15	"	6	West 1/2 of 20	100
6	" 12 20 27 33	"	"	West 1/2 of 26	"
7	" 2 8 15 16 17 18 19 20 31	200	1	West of Hurontario St.	
8	" 12 20	"	"	No. 20 26 34	200
9	" 2 8 15 25	"	"	West 1/2 of 15	100
10	" 6 12 20	"	2	No. 22 28	200
"	West 1/2 of 27	100	3	" 20 26	"
11	" 8 15 18 25 31	200	4	" 6 13 22 28	"
"	" 2	148	"	S. W. 1/2 of 32	100
12	" 33	200	5	" 15 20 26 34	200
"	" 12	40	6	" 22 28	"
"	" 20	116		Caledon, E. Hurontario Street.	
"	" 27	184	1	No. 5 28	200
13	" 31	24	"	East half of 11	100
	Vaughan.		"	East half of 21	100
2	No. 33	200	2	No. 3 24	200
3	" 25 31	200	"	East half of 16	100
4	East half of 33	100	"	No. 30	6
5	East 1/2 of 25	100	3	" 5	200
6	No. 27	200	"	" 11 21	"
8	" 20 27 33	200	"	" 28	50
9	" 25 31	200	4	" 3 16 24	200
"	West half of 15	100	"	North 1/2 of 9	100
10	" 12	30	5	No. 5 11 21	200
"	" 20	80	6	" 3 16	200
"	" 27 33	150	"	" 24	50
11	" 31	200		West of Hurontario St.	
	Toronto, East of Centre Road.	52	1	No. 5 11 28	200
2	No. 6		"	West 1/2 of 21	100
	Etobicoke,	200	2	No. 9 24 30	200
A	No. 13	100	3	" 11 28 21	200
			"	West 1/2 of 21	100
			4	No. 3 9 16 30	200

Con. 4  
5  
6  
1  
2  
3  
4  
5  
6  
7  
8  
9  
10  
1  
2  
3  
4  
5  
6  
7  
8  
9  
10  
11  
1 No  
2  
3  
4  
5  
6  
7



HOME DISTRICT.—*continued.*

<i>Orillia, S. Division.</i>			<i>Medonte continued.</i>		
<i>Con.</i>	<i>LOTS.</i>	<i>Aeres.</i>	<i>Con.</i>	<i>LOTS.</i>	<i>Aeres.</i>
1	No. 5	170	13	No. 4 11 21 23	209
"	" 11	200	14	" 5 15 20	200
"	" 21	90		<i>Oro.</i>	
2	" 3 9 16	20	2	No. 16 25 33 39 A.	100
3	" 5 11	200	"	" 27	200
4	" 3 9	200	3	" 4 11 21 23	200
5	" 5 11	200	4	" 5 15 20 27	200
6	" 3	190	5	" 4 11 21 23	200
7	" 11	80	6	" 5 15 20	200
	<i>Tay.</i>		7	" 4 11 13 21 23	200
2	No. 82 89 94 103	100	8	" 5 8 11 12 13 15 20	200
"	" 112	54	9	" 27	100
3	" 5 11 28	200	"	" 4 11 12 21 23	200
"	" 19	87	10	" 5 15 20	200
"	" 21	42	11	" 4 11 21 23	200
4	" 3 7 9 16	200	12	" 5 15 20	200
5	" 5 11	200	13	" 23	32
6	" 3 7 9	200	"	" 11 21	200
"	" 16	12	"	" 4	108
7	" 5 11	200	14	" 5 15 20	200
8	" 3 7	200		<i>Tiny.</i>	
"	" 9	185	1	No. 11	200
9	" 5	200	"	" 21	122
10	" 3 7 9	200	"	" 28	97
11	" 5	200	2	" 9 16 24	200
"	" 11	60	3	" 11 21	200
12	" 3	192	"	" 28	11
"	" 16	141	4	" 9 16	200
13	" 7	195	"	" 24	159
"	" 11 13	200	5	" 11	200
14	" 3 9 16	200	"	" 21	185
	<i>Medonte.</i>		6	" 9 15 16 17 18	200
3	No. 4 11 21 23	200	7	" 11	200
4	" 5 15 20	200	8	" 9 16	200
5	" 4 11 21 23	200	9	" 11	200
6	" 5 15 20	200	10	" 9	165
7	" 4 11 21 23	200	"	" 16	200
8	" 5 13 15 20	200	11	" 11	200
9	" 4 11 12 13 14 21 23	200	12	" 9 16	200
10	" 5 13 15 20	200	13	" 11	200
11	" 4 11 21 23	200	"	" 21	29
12	" 5 15 20	200	14	" 9 16	200
			15	" 5	195

HOME DISTRICT.—continued.

e continued.		Tiny continued.		Vespra continued.	
LOTS.	Acres.	Con.	LOTS.	Acres.	Con.
21 23	209	15	No. 11 21	200	4
20	200	16	" " D	87	5
Oro.		"	" " 9 16	200	6
5 33 39 A.	100	"	" " 3	190	7
	200	"	" " 24	150	8
21 23	200	17	" " E 5 11 21	200	9
20 27	200	18	" " A D 9 16 24	"	10
1 23	200	"	" " 3	175	11
0	200	19	" " E.	114	"
3 21 23	200	"	" " 5 11 21	200	12
12 13 15 20	200	20	" " A.	111	13
	100	"	" " D.	96	"
2 21 23	200	"	" " 3	192	14
0	200	"	" " 9	144	"
123	200	"	" " 16	200	"
0	200	21	" " 21	48	1
	32	"	" " 5	18	2
	200		Flos.		3
	108	1	No. 5 11 19 21	200	
	200	"	" " 27	135	1
		2	" " 3 9 16 24	200	2
	200	3	" " 5 11 17 18 21	"	3
	122	"	" " 27	185	4
	97	4	" " 3 9 16 17 18 19 24	200	5
4	200	5	" " 5 11 21	"	6
	200	"	" " 27	135	7
	11	6	" " 3 9 16 24	200	8
	200	7	" " 5 11 21	"	"
	159	"	" " 27	135	1
	200	8	" " 3 9 16	200	2
	185	"	" " 24	141	3
3 17 18	200	9	" " 5 11 21	200	4
	200	"	" " 27	60	5
	200	10	" " 3 9 16	200	6
	200	"	" " 24	30	7
	165	11	" " 5 11	90	"
	200	"	" " 21	62	1
	200		Vespra,		
	200	2	No. 15 21 31 38	100	2
	200	"	" " 20	37	3
	29	"	" " 21	22	4
	200	3	" " 4 21	200	5
	195	"	" " 23	99	6

Vespra continued.	
LOTS.	Acres.
No. 5 17 20	200
" " 4 21 23	"
" " 5 15 17 20	"
" " 4 21 23	"
" " 5 13 15 17 20	"
" " 4 12 13 14 21 23	"
" " 5 13 15 17 20	"
" " 4 21	"
" " 23	72
" " 5 15 17 20	200
" " 4	"
" " 21	196
" " 5 15 17 20	200

Mulmur.	
St.	Acres.
West of Hurontario St	
No. 5 11 21 28 31	200
" " 3 9 16 24	"
" " 5 11 21 28 31	"
East of Hurontario St.	
No. 3 9 16 24	200
" " 5 11 21 28 31	"
" " 3 9 16 24	"
" " 5 11 21 28 31	"
" " 3 9 16 24	"
" " 5 11 21 28 31	"
" " 3 9 16 24	"
" " 5 11 21 28 31	"
Tosorontio.	
No. 5 11 21 28 31	200
" " 3 9 16 24	"
" " 5 11 21 28 31	"
" " 3 9 16 24	"
" " 5 11 21 28 31	"
" " 3 9 16 24	"
" " 5 11 21 28 31	"
Essa.	
No. 5 11 21 28	200
" " 3 9 16 24 30	"
" " 5 11 21 28	"
" " 3 9 16 24 30	"
" " 5 11 18 21 28	"
" " 3 9 16 24 30	"
" " 5 11 21 28	"



HOME DISTRICT.—*continued.*

<i>Essa continued.</i>			<i>Tecumseth.</i>		
Con.	LOTS.	Acres	Con.	LOTS.	Acres
8	No. 3 9 16 24 30	200	1	No. 4 11	200
9	" 5 11 21 28	"	2	" 5	200
10	" 3 9 16 24 30	"	3	" 11	200
11	" 5 21 28	136	4	" 15	200
	<i>Innisfil.</i>			North $\frac{1}{2}$ of 5	100
1	No. 4 21 23	200	5	" 4 11	200
"	" 11	50	6	" 5 20	200
2	" 5 15 20	200	7	North $\frac{1}{2}$ of 4	100
3	" 4 21	"	"	No. 11 4	200
"	" 23	160	8	" 5 20	200
4	" 5 15 20	200	"	North $\frac{1}{2}$ of 15	100
5	" 4 11 21 23	"	9	" 4 11	200
6	" 5 15 20	"	"	North $\frac{1}{2}$ of 21	100
7	" 4 11 21 23	"	10	" 5 15 20	200
8	" 5 15 20 "	"	11	" 4 11 21 23	200
9	" 4 11 21 23	"	12	" 5 15 20	200
10	" 5 15 20	"	13	" 4 11 21 23	200
"	" 27	160	14	" 5 15 20	200
11	" 4 11 21 23	200	15	" 4 11 21 23	50
12	" 5 15 20 27	"		<i>Adjala.</i>	
13	" 4 11	"	1	No. 11 21 28	200
"	" 21	150	2	" 3 16 24 30	200
"	" 23	190	"	West $\frac{1}{2}$ of 9	100
14	" 5	200	3	" 5 11 21 28	200
	<i>Gwillimbury West.</i>		4	" 3 9 16 24 30	200
	<i>Old Survey.</i>		5	" 5 11 21 28	200
2	No. 10 11 12	200	6	" 3 9 24 30	200
"	" 20	100	7	" 5 11 21 28	200
3	" 5	200	8	" 3 9 16 24 30	50
"	" 11	100		<i>Mono.</i>	
	<i>New Survey.</i>			<i>West of Hurontario St.</i>	
1	No. 11	64	1	No. 5 11 21 28	200
2	" 5	100	2	" 3 9 16 24 30	200
3	" 5 17	200	3	" 5 11 21 28	200
10	" 5 17	"		<i>East of Hurontario St.</i>	
11	" 11	"	1	" 5 11 21 28	200
12	" 5 15 17	"	2	" 3 9 16 24 30	200
"	" 20	190	3	" 5 11 18 21 28	200
13	" 4 11	200	4	" 3 9 16 24 30	200
"	" 21	150	5	" 5 11 21 28	200
14	" 5 15 17 20	200	"	" 3 9 16 24 30	200
15	" 4 11 21	40	"	" 5 21 28	200
			"	East half of 11	100

ued.

mseth.  
ts.

Acres.

- 200
- 200
- 200
- 200
- 100
- 200
- 200
- 200
- 100
- 200
- 200
- 200
- 100
- 200
- 200
- 200
- 200
- 200
- 200
- 200
- 50
- 200
- 200
- 100
- 200
- 200
- 200
- 200
- 200
- 50
- 200
- 200
- 200
- 200
- 200
- 200
- 200
- 200
- 200
- 200
- 200
- 200
- 200
- 200
- 200
- 100

5

+

15

21

23

23

23

ala.

8

30

28

24 30

28

30

28

24 30

no.

rontario St.

28

4 30

28

rontario St.

28

4 30

21 28

4 30

28

4 30

200

11

GORE DISTRICT.

Con.	Mono continued.		Acres.	Con.	Erin.		Acres.
	LOTS.				LOTS.		
8	No. 3	9 16 24 30	200	1	No. 6		196
	Amaranth.			"	" 13		218
1	No. 5	11 21 28 31	200	"	" 21 28		200
2	"	3 9 16 24	"	2	" 1 9 15 24 30 32		"
3	"	5 11 21 28 31	"	3	West 1/2 of 6		100
4	"	3 9 16 24	"	"	No. 13 21 28		200
5	"	5 11 21 28 31	"	4	" 9 15 21 24 30		"
6	"	3 9 16 24	"	5	" 6 13 21 28		"
7	"	5 11 21 28 31	"	"	West 1/2 of 20		100
8	"	3 9 16 24	"	6	No. 1 9 30 32		200
9	"	5 11 21 28 31	"	"	W. 1/2 of 15 E. 1/2 of 24		100
10	"	3 9 16 24	"	7	No. 6 13 21 28		200
GORE DISTRICT.							
Township of Trefalgar							
South Dundas Street.							
2	West 1/2 of 9		100	10	No. 1 9 15 24 30 32		200
"	North 1/2 of 14		"	11	" 13		200
Running North & South							
1	No. 5		200	1	Garafraxa.		
2	South West 1/2 of 3		100	2	No. 5 11 21 28 35		200
5	West 1/2 of 11		"	3	" 3 9 16 24 30		"
11	No. 5		200	4	" 5 11 21 28		"
Esquesing.							
1	No. 13		150	5	" 3 9 16 24 30		"
"	" 21		165	6	" 5 11 21 28		"
"	" 28		180	7	" 3 9 16 24		"
2	East 1/2 9		100	8	" 30		16
"	No. 15 18 24 30		200	9	" 5 11 21		200
3	" 21		"	10	" 28		69
"	West 1/2 of 6		100	11	" 3 9 16 24		200
4	" 24 30		200	12	" 5 11 21		"
5	East half of 13		100	13	" 3 9 16		28
"	No. 28		200	14	" 24		200
6	East 1/2 of 9		100	15	" 5 11		196
"	No. 30		200	16	" 21		200
7	" 6 28		200	17	" 3 9 16		"
8	" 24 30		200	18	" 5 11		"
9	" 13 28		200	19	" 3 9		"
10	" 24		200	20	" 5 11		"
"	S. E. 1/2 of 15		100	21	" 3 9		"
"	West 1/2 of 30		"	22	" 5		"
11	No. 21 28		200	23	" 11		8

GORE DISTRICT.—LONDON DISTRICT.

<i>Garrofraxa continued.</i>			<i>Beverly, continued.</i>		
Con.	LOTS.	Acres.	Con.	LOTS.	Acres.
A	No. 3	200	3	North half of 1 16	190
B	" 5	200	"	No. 23	200
C	" 3	200	4	" 5 13 20 28	100
	<i>Eramosa.</i>		5	" 16 23	200
1	No. 26	200	6	" 13 20 28	"
"	" 28	180	7	" 6 16 23 25	"
2	" 9 30	200	8	" 5 11 13 15 20 22 26 28	"
3	" 6 21 28	200	9	" 1 10 16 23 36	"
4	" 29 15 24 30	200	"	South half of 8	100
5	" 6 13 19 21 23	200	10	No. 5 13 20 28	"
6	" 29 15 24 30	200		<i>Glanford.</i>	
7	" 13 21 28	200	3	No. 13	200
	<i>Nassagaweya.</i>		5	" 13	"
1	No. 6 13 21 28	200	7	" 13	"
2	" 13 9 15 24 30	200	9	" 13	40
3	" 6 13	200		<i>Binbrook.</i>	
4	" 9 21 30	200	7	No. 25 29	200
5	" 3 6 13 28	200	8	" 17 21	"
6	" 9 15 24 30	200	9	" 29	"
7	" 3 13 21 23	200	"	" 25	170
	<i>Nilson.</i>			<b>NIAGARA DISTRICT.</b>	
	<i>North Dundas Street.</i>			<i>Township of Caistor.</i>	
2	North half of 23	100	1	No. 3	200
	<i>New Surrey.</i>		3	" 2 8 16	"
1	No. 5	200	4	" 7 13	"
2	" 9	200	5	" 2 8 16	"
4	" 3	200	"	South half of 21	100
5	" 11	200	6	No. 7 13 19	200
7	" 5 11	200	7	" 16.	246
	<i>Flamborough East.</i>			<b>LONDON DISTRICT.</b>	
6	No. 13	200		<i>Township of Windham.</i>	
7	" 3 9	200	1	No. 21 23	200
8	" 13	200	2	" 5 20	"
9	" 3	200	3	" 4 11 21 23	"
10	" 13	200	4	" 5 15 20	"
"	Rear half of 3	100	5	" 4 11 21 23	"
11	No. 2 3 9	200	6	" 15 20	"
12	" 5	200	7	" 4 11 21 23	"
13	" 3 9	200	8	" 15 20	"
14	" 5	45	9	" 11 21 23	"
	<i>Flamborough West.</i>		10	" 15 20	"
4	No. 4 12	200	11	" 11 21	"
"	" 21	110	12	" 15 20	"
5	" 5 13	200	13	" 11 21 23	"
"	" 18	106		<i>Rainham.</i>	
"	" 4 12	200	2	No. 5 15	200
7	" 5	200	3	" 4 11	"
8	" 2 5	200	4	" 5 6 7 12	"
"	" 8	166	"	" 15	135
9	" 5	171	"	" 16	64
10	" 4	42	5	" 4 5 6	200
	<i>Beverly.</i>		"	" 11	199
2	North half of 23	100			
"	No. 23	200			

DISTRICT.

Acres.
100
200
100
200
"
"
25
15 20 22 26 28
23 56
100
78
23
anford.
200
"
"
40
brook.
200
"
"
170
DISTRICT.
of Caistor.
200
"
"
"
100
200
145
DISTRICT.
of Windham.
200
"
"
"
"
"
"
"
"
"
"
ham.
200
"
"
135
64
200
199

LONDON DISTRICT.—continued.

Rainham continued.				Charlottesville continued.		
Con.	LOTS.	Acres.	Con.	LOTS.	Acres.	
6	" 5		4	No. 5	200	
7	" 4	200	5	" 4	200	
8	" 5	200	6	" 4 5	200	
		36	7	" 4 11	200	
	Walpole.		8	" 5 15 20	200	
3	No. 4 11 21 23	200	9	" 4 11	200	
4	" 5 15 20	200	10	" 15	200	
5	" 4 11 21 23	200	11	" 4	200	
6	" 5 15 20	200	12	" 5	105	
7	" 4 11 21 23	200		Walsingham.		
8	" 5 15 20	200	A	North half of 11	100	
9	" 4 11 21 23	200	1	No. 4	200	
10	" 5 7 14	200	2	North half of 11	100	
11	" 4 6 11	200	3	No. 5 12	200	
12	" 5 9 14 16	200	4	" 4 11 21	200	
13	" 4 8 13	200	5	" 5 12 15 20	200	
14	" 5	200	6	" 4 21 23	200	
16	" 4	200	7	" 5 15 20	200	
	Woodhouse.		8	" 4 11 21	200	
2	No. 20	200	9	" 5 15 20	200	
3	" 21	200	10	" 4 11 21 23	200	
4	" 20	200	11	" 5 15 20	200	
5	" 11 21 23	200	12	" 4 11 21 23	200	
6	" 20	200	13	" 5 15 20	200	
	South half of 15		14	" 4 11 21 23	200	
	Townsend			" 5 15 20	200	
1	No. 4	200		" 5 15 20	200	
2	" 5 22	200		Middleton,		
3	" 4 21	200		South of Talbot Road.		
4	" 23	198	2	No. 5	90	
5	" 5 20	200		" 8	150	
6	" 4 21 23	200		" 12 15 18 19 22 26	200	
7	" 15	200		29 34 36 40 43	194	
8	" 21 23	200		" 18	160	
9	" 15 20	200		" 32	76	
10	" 23	200		" 39 45	21	
11	" 15 20	200		" 46	200	
12	" 17 21	200		" 19 21 25 28	90	
13	" 15 20	200		" 22		
14	" 21 23	200		th of Talbot Road.		
	" 15 20	200		No. 4 11 13 18	200	
	Charlottesville.			" 19	195	
1	No. 4	200		" 21	118	
3	" 4	200		" 25	32	

LONDON DISTRICT.—continued.

Middleton continued.			Zorra continued.		
Con.	LOTS.	Acres.	Con.	LOTS.	Acres.
2	No. 32	80	12	No. 3 9 16 30	200
"	" 35	108	"	" 24	150
"	" 39 42 46	110	13	" 5 11 21 28 34	200
3	" 1 5 8 12	200	14	" 3 16 24 30	114
"	" 15	144		Zorra.	
4	" 4	200	1	East half of 11	100
"	" 8	197	"	No. 21 2 34	200
"	" 11	92	2	" 3 9 16 24 30	200
5	" 1	200	3	" 5 11 21 28 34	200
"	" 5	114	4	East half of 3	100
	Houghton.		"	" 24 30	200
	West of North Road.		5	" 21 28 34	200
	No. 4 11 14	200	6	East half of 3	100
	East of North Road.		"	West half of 9	100
	No. 1 5 7 15	200	"	No. 16 24 30	200
	" 20	155	"	" 36	40
	No. 21		7	" 5 21 28 34	200
	South of Talbot Road.	100	8	" 3 16 24 30	200
1	" 4 11 13 17 19	200	"	West 1/2 of 9	100
2	" 5 7 15 17	"	9	No. 21 28 34	200
3	" 4 7 11	"	"	East half of 5	100
4	" 1 5	"	"	West half of 11	100
"	" 13	185	10	No. 3 9 16 24 30	200
"	" 15	12	"	" 36	40
5	" 4	200	11	" 11 21 28 34	200
"	" 11	185	12	" 9 16 24 30	200
6	" 13 5 8	200	13	" 11 21 28 34	200
"	" 10	100	14	" 9 16 24 30	200
	Nissouri.		15	" 11 21 28 34	200
1	No. 21 28 34	200	16	" 9 24 30	200
2	" 3 16 24 30	"	"	" 16	140
3	" 5 11 21 28 34	"	17	" 11 28 34	200
4	" 3 9 16 24 30	"	18	" 30	120
5	" 5 21 28 34	"	19	" 34	60
6	" 3 9 16 24 30	"		Blenheim.	
"	" 36	96	1	No. 21 23	200
7	" 11 21 28 34 5	200	3	" 11 21 23	200
8	" 3 9 16 24 30	"	4	" 15 20	200
9	" 5 11 21 28 34	"	5	" 11 21 23	200
10	" 3 9 16 24 30	"	6	" 5 20	200
"	" 36	96	"	" 15	130
11	" 21 28 34	200	7	" 4 11 21 23	200
"	East half of 5	100	8	" 5 15 20	200

1st Range.

Con. 10 11 12 13 14 1 2 3 4 5 6 7 8 9 10 11 No No No No No

LONDON DISTRICT.—continued.

Continued.	Acres.
28 34	200
34	150
1 28 34	200
30	114
rra.	
f 11	100
34	200
24 30	200
28 34	200
f 3	100
	200
4	200
3	100
f 9	100
30	200
	40
8 34	200
30	200
9	100
34	200
5	100
f 11	100
24 30	200
	40
8 34	200
30	200
8 34	200
30	200
3 34	200
	200
	140
4	200
	120
	60
im.	200
3	200
	200
	200
	200
	130
23	200
	200

Blenheim continued.

Con.	LOTS.	Acres.
9	No. 4 11 21 23	200
10	" 5 15 20	"
11	" 4 11 21 23	"
12	" 5 15 20	"
13	" 11 21 23	"
14	" 11 15 20 21 23	"
	<i>Oxford North.</i>	
1	No. 17	200
2	" 4 11	"
3	" 8	"
"	North $\frac{1}{2}$ of 12	100
4	No. 4	200
	<i>Oxford West.</i>	
4	No. 5	200
"	" 15	180
5	" 4	87
"	" 11	192
6	" 5	32
	<i>Oxford East.</i>	
1	No. 4.	200
"	South half of 11	100
2	No. 5 15	200
3	" 4 11	"
4	South half of 15	100
5	No. 11	200
"	South half of 21	100
6	No. 5 15 20	200
7	" 4 11 21	"
8	" 5 15 20	"
	<i>Burford.</i>	
1	No. 12 21 23	200
2	" 5 20	"
3	" 4 11 21 23	"
4	" 5 15 20	"
5	" 6 23	"
6	" 15 20	"
7	" 21 23	"
8	" 15 20	"
9	" 4 23	"
"	North half of 21	100
10	No. 5 15	200
"	South half of 20	100
11	No. 4 11 21 23	200

Burford continued.

Con.	LOTS.	Acres.
12	" 15 20	200
13	" 11 21 23	"
14	" 20	"
	<i>Dereham.</i>	
1	No. 3 24	200
2	" 6 13 20 27	"
3	" 3 10 17 24	"
4	" 6 13 20 27	"
5	" 3 10 17 24	"
6	" 6 13 20 27	"
7	" 3 10 17 24	"
8	" 6 13 20 27	"
9	" 3 10 17 24	"
10	" 6 13 20 27	"
11	" 3 10 17 24	"
12	" 6 13 20 27	"
	<i>Norwich.</i>	
1	No. 3 24	200
2	" 27	"
3	" 24	"
4	" 27	"
5	South half of 17	100
"	South half of 24	"
7	No. 17	200
8	" 6	"
"	North half of 27	100
9	No. 3	200
"	South half of 24	100
10	No. 6 20 27	200
11	" 3 10 17 24	"
12	" 6 13 27	"
"	" 20	184
	<i>Gore of B.</i>	500
	<i>Bayham.</i>	
2	No. 27	200
3	" 24	"
"	South half of 22	100
"	South half of 7	"
4	No. 13 20	200
"	North $\frac{1}{2}$ of 27	100
"	North $\frac{1}{2}$ of 6	"
5	No. 3 17 22 24	200
5	" 10	50

LONDON DISTRICT.—continued.

Con.	Bayham continued LOTS.	Acres.	N. of Edgeware Road. First Range.	Acres.
6	" 27	220	LOTS.	
8	" 10 20 22 24	200	No. 4 6 11 13	100
"	North $\frac{1}{2}$ of 6	100	" 20 ditto.	65
9	No. 3 7 10 <b>21</b>	200	Second Range.	
"	" 27	60	" 4 6 11 13	100
10	" 6	150	Con. No. 1 3 10	200
"	" 24	50	" North $\frac{1}{2}$ of 17	100
"	" 13 20	200	" 1 4 6 11 13	200
11	" 17	100	Vort' $\frac{1}{2}$ of 18	100
	<i>Malahide.</i>		No. 3 10	200
2	No. 14	200	" 1	180
"	North $\frac{1}{2}$ of 22 24 30	100	" 6	140
3	No. 5 11 17 21 <b>25</b> 34	200	" 13	200
4	" 9 22 24 30 <b>35</b>	200	" 18	48
5	" 6 11	200	<i>Southwold.</i>	
"	" 28	180	No. 4.	120
"	" 34	260	" 11	99
	<i>North of 5th Concession.</i>		" 15	200
Gore	No. 5 11	40	" 4 11	"
	<i>South of 8th Concession</i>		" 5 15	"
	No. 21	102	" 7, East river road.	100
	" 23	100	" 7, N. side Union do.	75
	" 28	90	" 5, South side ditto.	84
Con.	" 16 17 24 28 30	200	" 6, ditto ditto.	100
"	" 9	212	<i>North side of Lake R'd.</i>	
<i>South</i>	North half of 3	100	No. 2	20
"	" 11	50	" 3	80
"	" 21	120	" 4	180
"	" 23	132	" 5 8	140
"	" 28	162	" 6 9	110
"	" 29	169	" 7	75
"	" 30	178	" 11	54
"	" 34	205	Con. <i>Dunwich.</i>	
	<i>Yarmouth.</i>		No. 4 11 21 23	200
1	North $\frac{1}{2}$ of 17	100	" 5 15 20	200
2	No. 27	200	" B.	60
"	Vorth $\frac{1}{2}$ of 13	100	" 4 11 21 23	200
4	" 27	200	" 5 15 20	200
6	" 13 27	200	" 5 15 20 C. next river Thames.	200
7	" 10 17	200	" 4 5 13 15 20 B.	200
			" 4 6 7 8 11 13 14 17 18, next L. Eric.	200

## LONDON DISTRICT.—continued

		<i>Dunwich continued.</i>				<i>Westminster continued.</i>	
		Con.	LOTS.	Acres.	Con.	LOTS.	Acres
	ware Road.	5	" 19 21 23, A. ditto	200	6	" 5 8 11 14 15 18 20	
	Range.	6	" 5 15 20, B.	200		" 21	200
	3				7	" 4 5 8 11 14 21	200
						" 23	120
	Range.	A	No. 4	90	8	" 5	45
	3		" 11	200		" 8	110
			" 21	100		" 9	120
	7		" 23	170		" 11	180
	13	B	" 11	150		" 14 15 18 20 21	200
	3					" 21	170
			<i>Aldborough.</i>			" 4	80
		1	" 4 11	200		" 11 21 23	100
		2	" 5 12	200	Gore		
		3	" D. 9	200			
		4	" 3 13	200			
		5	" D. 7 14	200	Con.	<i>Dorchester.</i>	
		6	" 5 8 13	200	1	<i>Northern Division.</i>	
		7	" C. 3 6 8 13 18 23	200	2	No. 5 15 20	200
			" 24	200	3	" 4 11 16 21	200
		8	" D. 19	200	4	" 8 12 15 20	200
		9	" C. 3 13 18 23	200		" 21	200
		10	" II 19	200		" 11	149
		11	" C 3 13 18 23	200		<i>Southern Division.</i>	
	ver road.				1	No. 11	200
	Union do.	Gore	<i>Between 6th &amp; 7th Con.</i>		2	" 5 15 20	200
	side ditto.		No. D. 5 10	116	3	" 4 11 21 23	200
	ditto.	B F	" 11	194	4	" 5 15 20	200
	Lake R'd.		<i>In the north east Division, or Gore.</i>		5	" 4 11 21 23	200
		Con.			6	" 5 15 20	200
		1	No. 21	200	7	" 4 11 21 23	200
		2	" 24	200	8	" 5 15 20	200
		3	" 21 23	200	9	" 4 11 21 23	200
		4	" 20 24	200	10	" 5 15 20	200
		A	" 21 23	200	11	" 4 11 21 23	200
		B	" 21	182	12	" 5 15 20	200
			<i>Delaware.</i>		B	No. 5	200
		1	No. 21 23	200		" 6	160
		2	" 5 20	200		" 7	120
		3	" 4 11 21 23	200			
		4	" 5 15 20	200		<i>London.</i>	
		C	" 21 23	200	1	No. 21	170
		D	" 11	300	2	" 2 3 24	200
			<i>Westminster.</i>		3	" 5 11	200
		3	No. 4 5 8 11 14 21	200		" 23	58
		4	" 5 8 11 15 18 20 21	200		" 24	200
		5	" 5 8 11 15 18 20 21	200		" 11 28	200
		6	" 4 5 8 11 14 21 23	200	6	" 3 9 24 30	200



## LONDON DISTRICT.—continued.

London continued.			Caradoc continued.		
Con.	LOTS.	Acres.	Con.	LOTS.	Acres.
7	" 28	200	8	" 5 15 20	200
"	North $\frac{1}{2}$ of 11 21	100	9	" 1 4 11 21 23	"
8	No. 3 9 24 30	200	10	" 5 15 20	"
9	" 5 21 28	200		<i>S. of Longwood Road.</i>	
10	" 3 9 24 30	200		No. 3 5 15 20 2d range.	200
11	" 5 11 21	200		" 4 11 3d ditto.	"
"	South half of 28	100		" 5 20 4th ditto.	"
12	No. 3 9 24 30	200		" 15 do. ditto.	195
"	South half of 16	100		" 4 5th ditto.	200
13	No. 5 11 28	200		" 11 do. ditto.	195
"	South half of 21	100		<i>Ekfrid.</i>	
14	No. 3 9 16 24 30	200	1	No. 5 6 15 20	200
15	" 5 11 21 28	200	2	" 4 7 11 13 15 20	"
16	" 3	129		" 21 23	200
"	" 9	138	3	" 3 5 15 20	"
"	" 24	165	4	" 4 11 21 23	"
"	" 30	180	5	" 5 15 20 23	"
C	" 3	200	6	" 4 11 21 23	"
	<i>Lobo.</i>		7	" 5 15 20	"
1	No. 12	136	8	" 4 11 21 23	"
3	" 4 11	200		<i>North of Talbot Road.</i>	
4	" 15	195		No. 4 2d range.	216
5	" 4 11	200		" 11 ditto.	228
6	" 5 15	200		" 21 23 ditto.	200
7	" 11	200		<i>South of Talbot Road.</i>	
8	" 5 15	200		No. 5 15 20 2d range.	200
"	" 20	55		" 4 11 21 23 3d do.	"
9	" 4 11	200		" 5 4th do.	"
"	" 21	55		" 20 ditto.	36
10	" 5 15 20	200		<i>Mosc.</i>	
11	" 4 11 21	200	1	No. 4 14 19 22 24 25	200
"	" 23	55	2	" 1 3 8 14 16	"
12	" 5 15 20	200	"	" 23	195
13	" 4 11 21 23	200	3	" 2 6 12 14	200
	<i>Caradoc.</i>		"	" 22	100
1	" 4 11 21	200	4	" 3 8 16	200
2	" 1 5 15 20	200	5	" 4 14	"
3	" 4 11 21 23	200	6	" 3 8	"
4	" 2 4 5 15 20	200	"	" 16	30
5	" 4 11 21	200	7	" 4	200
"	North half of 23	100	8	" 3 8	"
6	No. 5 15 20	200	9	" 4	"
7	" 4 11 21	200	10	" 3	"

inued.	Acres.
23	200
"	"
d Road.	
d range.	200
3d ditto.	"
4th ditto.	"
5th ditto.	195
6th ditto.	200
7th ditto.	195
"	200
5 20	200
"	200
"	"
"	"
"	"
"	"
Road.	
range.	216
to.	228
to.	200
Road.	
range.	200
3d do.	"
4th do.	"
ditto.	36
24 25	200
"	"
"	195
"	200
"	100
"	200
"	"
"	30
200	200
"	"
"	"

### WESTERN DISTRICT.

No. 12		13		14		15		16		17		18		19	

North side of Longwood  
 Run—2d range.  
 No. 23 14 16  
 " 23  
 " 25

WESTERN DISTRICT  
 Township of Howard.  
 North East of 21 22  
 Between this Town-  
 ship and Harwich.

Chatham.  
 No. 13 14 15 17  
 " 13 14 15 16 17  
 " 13 14 15 16 17  
 " 13 14 15 16 17  
 " 13 14 15 16 17  
 " 13 14 15 16 17  
 " 13 14 15 16 17  
 " 13 14 15  
 " 16  
 " 17

Raleigh.  
 No. 24 Broken front  
 on the Thames.  
 185

Raleigh A.  
 3500

Tilbury East.  
 No. 11  
 " 8 13 15  
 " 18  
 " 2 11  
 " 6  
 " 13  
 " 18  
 " 21  
 " 2  
 " 24  
 " 6 13 21 25  
 " 15  
 " 3

Tilbury East continued

No. 12 15 19  
 " 21  
 " 2  
 " 11  
 " 13 15  
 " 18  
 " 11  
 " 6  
 " 13  
 " 2  
 " 11

Tilbury West.  
 No. 5 11  
 " 3 9 16  
 " 5 21  
 " 3 9 16  
 " 5  
 " 3  
 " 11  
 " 21  
 " 9 16  
 " 5 11  
 " 21  
 " 3 9 16  
 " 5 11

No. 5 Broken front.  
 " 11 ditto.  
 Romney.  
 No. 4 broken front.  
 " 4  
 " 15 21  
 " 20  
 " 21 23 25  
 " 13 15 20  
 " 29  
 " 21  
 " 23  
 " 15  
 " 20  
 " 13  
 " 15  
 " 18  
 " 15  
 " 19  
 " 19

WESTERN DISTRICT--continued.

Dues continued		Dues continued.	
Loas.	Acres. Con.	Loas.	Acres.
13 14 15 16 17 18		5 7 11 21 28	200
19	200	8 9 16 24 30	200
7 13 14 15 16 17 18		5 11 21 28	200
19	200	3 9 16 24 30 35	200
8 13 14 15 16 17 18		5 11 21 28	200
19	200	3 9 16 24 30	200
9 13 14 15 16 17 18		5 11 21 28	200
19	200	3 9 16 24 30 33	200
10 13 14 15 16 17 18		5 11 21 28	200
19	200	3 9 16 24 30	200
11 13 14 15 16 17 18		5 11 21 28	200
19	200	3 9 16 24 30 33	200
Cander			
2 No. 7 8 9 10	200	1 No. 6 16 23 25	200
" 11		" 1 7 22 25	200
" 12		" 6 16 23 29	200
" 13		" 4 5 17 23 28	200
3 East 1/2 of 6	100	" 6 16 23 29	200
" No. 7 8	200	D.	156
" 9		6 " 1 7 15 22 25	200
" 10		7 " 6 16 23 29 A. D.	200
" 11		6 " 1 7 15 22 28	200
4 East half of 6	100	9 " 6 16 23 29	200
" No. 7		10 " 7 15 22 28	200
" 8		11 " 6 16 23 29	200
" 9		12 " 7 15 22 28	200
Zone.			
1 No. 21	114	13 " 6 16 23 29 A.	200
" 22	84	14 " 7 15 22 28	200
" 34	54	15 " 6 16 23 29	200
2 16 24 30	200	Malden.	
3 " 21 28 34	200	No. 64 65 66 67 68 69	
4 " 16 24 30	200	70 71 82 83 84 85	
5 " 21 28 34	200	86 87 88 89	200
6 " 16 24 30	200	Sandwich.	
7 " 21 28 34	200	1 2 3 4 5 6	200
8 " 16 24 30	200	7	
9 " 21 28 34	200	8	
10 " 16 24 30	200	1 2 3 4 5 6	200
11 " 21 28 34	135	7	
Dover.			
1 No. 6 11 21 28	200	" 6	
2 " 3 9 16 24 30 33	200	" 7	
		" 1 2 3 4 5	200

Doc. 8  
9  
10  
11  
12  
13  
14  
15  
16  
17  
18  
19  
20  
21  
22  
23  
24  
25  
26  
27  
28  
29  
30  
31  
32  
33  
34  
35  
36  
37  
38  
39  
40  
41  
42  
43  
44  
45  
46  
47  
48  
49  
50  
51  
52  
53  
54  
55  
56  
57  
58  
59  
60  
61  
62  
63  
64  
65  
66  
67  
68  
69  
70  
71  
72  
73  
74  
75  
76  
77  
78  
79  
80  
81  
82  
83  
84  
85  
86  
87  
88  
89  
90  
91  
92  
93  
94  
95  
96  
97  
98  
99  
100

WESTERN DISTRICT

*Sandwich continued.*

Acres.	No.	Notes.
200	8	No 6
200	9	" 1 2 3 4
200	10	" 5
200	11	" 1 3
200	12	" 4
200	13	" 5
200	14	" 7 9
200	15	" 3
200	16	" 1
200	17	" 1 2
200	18	" 3
200	South Side of Taba Rocky - 25 rags, No. 291, C. 305	
200	Midstone.	
200	South of Middle Road	
200	19	No. 26
200	20	" 2
156	21	" 3
200	22	" 2 6
200	North of Middle Road	
200	23	No. 17
200	24	" 12 13
200	25	" 16
200	26	" 2 1 8
200	27	" 14
200	28	" 15
200	29	" 12

Acres.	No.	Notes.
200	10	" 14
224	"	" 12 broken mt.
194	"	" 18 ditto
		<i>Rochester</i>
		South of Middle Road.
	1	No. 25
146	2	" 25
146	3	" 25
166	4	" 30
146	5	" 25
146	6	" 30
46	7	" 30
		North of Middle Road.
200	8	No. 15
200	9	" 17
200	10	" 11
200	11	" 12
200	12	" 17
200	13	" 13 19
90	14	" 17
214	15	" 7 broken front.
200	16	" 15 ditto.
284	17	" 7, E. of river Ros-
		common.
286	18	" 11, N. of Middle
		Road.

68 69  
84 85

- 200
- 200
- 200
- 200
- 200
- 200

Block	Acres	Block	Acres
A. Sandwich	9012	A.	3500
B. " "	3000	B.	3590
C. Maiden	3100	<i>Horwich</i>	
D. Colchester	6370	Of 2	
E. " "	690	2534	
F. " "	100	210	
G. " "	40	2900	
H. " "	690	3332	
<i>Alton</i>		<i>Chatteris</i>	
I. " "	673	<i>Gough</i>	
J. " "	1200	42784	
No. 24, broken front,		186	A.
			B.
			28768
			13362

OF APPLICATION.

Year, 18

18

To the *Land Company.*

I wish to purchase *12* in the  
Concession of *12* and *12*  
(for the same at the rate of *12* per acre,

in the following manner

Cash down,

Instalments, payable yearly, with Interest at 6 per cent.  
And I will conform to all the terms and conditions which  
the Company may establish for regulating the settlement  
of their Lands.

*Address,*

*Post Office,*

10 C

ATION.

1893

in the  
and  
per cent.

est at 6 per cent.  
conditions which  
ing the settlement

