

**CIHM
Microfiche
Series
(Monographs)**

**ICMH
Collection de
microfiches
(monographies)**



Canadian Institute for Historical Microreproductions / Institut canadien de microreproductions historiques

© 1997

The copy filmed here has been reproduced thanks to the generosity of:

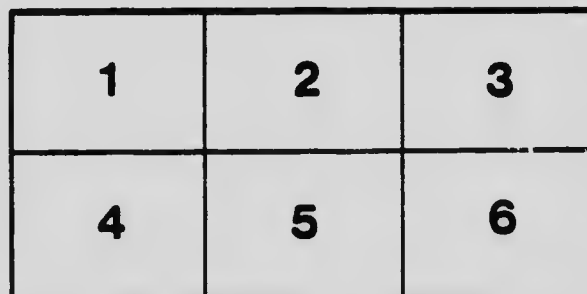
Université du Québec à Montréal
Bibliothèque

The images appearing here are the best quality possible considering the condition and legibility of the original copy and in keeping with the filming contract specifications.

Original copies in printed paper covers are filmed beginning with the front cover and ending on the last page with a printed or illustrated impression, or the back cover when appropriate. All other original copies are filmed beginning on the first page with a printed or illustrated impression, and ending on the last page with a printed or illustrated impression.

The last recorded frame on each microfiche shell contains the symbol \rightarrow (meaning "CONTINUED"), or the symbol ∇ (meaning "END"), whichever applies.

Maps, plates, charts, etc., may be filmed at different reduction ratios. Those too large to be entirely included in one exposure are filmed beginning in the upper left hand corner, left to right and top to bottom, as many frames as required. The following diagrams illustrate the method:



L'exemplaire filmé fut reproduit grâce à la générosité de:

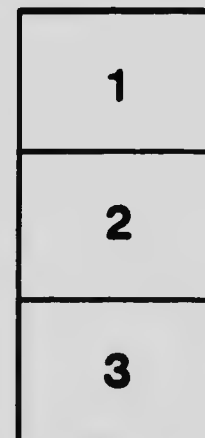
Université du Québec à Montréal
Bibliothèque

Les images suivantes ont été reproduites avec le plus grand soin, compte tenu de la condition et de la netteté de l'exemplaire filmé, et en conformité avec les conditions du contrat de filmage.

Les exemplaires originaux dont la couverture en papier est imprimée sont filmés en commençant par le premier plat et en terminant soit par la dernière page qui comporte une empreinte d'impression ou d'illustration, soit par le second plat, selon le cas. Tous les autres exemplaires originaux sont filmés en commençant par la première page qui comporte une empreinte d'impression ou d'illustration et en terminant par la dernière page qui comporte une telle empreinte.

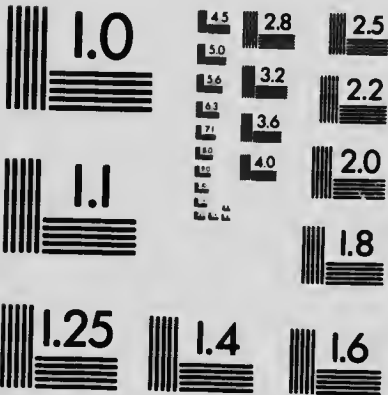
Un des symboles suivants apparaît sur la dernière image de chaque microfiche, selon le cas: le symbole \rightarrow signifie "A SUIVRE", le symbole ∇ signifie "FIN".

Les cartes, planches, tableaux, etc., peuvent être filmés à des taux de réduction différents. Lorsque le document est trop grand pour être reproduit en un seul cliché, il est filmé à partir de l'angle supérieur gauche, de gauche à droite, et de haut en bas, en prenant le nombre d'images nécessaire. Les diagrammes suivants illustrent la méthode.



MICROCOPY RESOLUTION TEST CHART

(ANSI and ISO TEST CHART No. 2)



APPLIED IMAGE Inc

1653 East Main Street
Rochester, New York 14609 USA
(716) 482 - 0300 - Phone
(716) 288 - 5989 - Fax

CATALOGUE OF THE
CANADIAN NATIONAL
EXHIBITION DEPART-
MENT OF FINE ARTS



IN FOLIO

NX
430
.C2A1
C3
1918

OPENED AT 26th to SEPTEMBER 7th

1918

021462

751.71
L

Catalogue of Department of Fine Arts

Canadian National Exhibition



Gallery of Fine Arts

Toronto, 1918

COUNCIL OF THE DEPARTMENT OF FINE ARTS

PRESIDENT T. A. RUSSEL, F.C.N.E.
CHAIRMAN W. K. McNAUGHT, C.M.G.
SECRETARY ROBERT F. GAGEN, R.C.A.
EUROPEAN REPRESENTATIVE E. RIMBULT LIDDIN, Director
Walker Art Gallery, Liverpool, England.

Commissioners

HOMER WATSON, R.C.A.
ROBT. F. GAGEN, R.C.A.
E. DYONNEE, R.C.A.
C. W. JEFFREYS, A.R.C.A.

Prefatory

THE present exhibition of selected paintings by American artists has been assembled with a view to present comprehensively the work of contemporary American painters. The selections were made as far as possible without prejudice or partiality, it being considered important that the newer expressions and motives of the moderns, as well as the work of the more conservative and academic, should be shown to give a broad view of the present state of the pictorial art of our southern neighbors, which ranks with the best contemporary art of the day.

The thanks of the Association are due to Mr. Clyde H. Burroughs, Director of the Detroit Museum of Art; Mr. Blake More Godwin, Director of the Toledo Art Museum; Mrs. Sage Quinten, Director of the Albright Art Gallery, Buffalo, and the Artists who have sent pictures for exhibition.

Owing to the war it has been impossible to import paintings from Britain or any foreign country, but through the kindness of Mr. J. W. Beatty, Director of the Carnegie Institute, Pittsburgh, we have on our walls some Foreign paintings which were retained in America after being exhibited at the Panama-Pacific Exposition.

Department of Fine Arts

The Canadian section, in many respects, may be considered an advance in the right direction in the quality of the work shown, and when we consider that many of our artists are now actively engaged in war work, and these include Captains Beatty, Cullen, Fosbery, Keene and Simpson, Lieut. Jackson, and the Misses Carlyle, Ford, Hagarty and Kerr, and that they are not as strongly represented as in previous years, the Canadian artists are to be congratulated on the excellence of their exhibition.

For a continual advancement of an annual exhibition of works by living Foreign and Canadian artists, such as the Canadian National, it is necessary to secure the active interest of the artist, and this can only be done by liberal purchases from the collection. A good record of sales will induce the artist to exhibit his most important work, and secure his enthusiastic co-operation in other ways. It will also add greatly to the artistic assets of Toronto, and the more general and earnest the co-operation of the artists, the more important and excellent will be the exhibitions.

con-
ality
y of
and
ene
le,
ng-
sts
bi-

m
s
e
f

MOST OF THE PAINTINGS
IN THIS COLLECTION
ARE FOR SALE, AND VISIT-
ORS ARE INVITED TO SEEK
INFORMATION IN REFER-
ENCE TO THEM FROM THE
CURATOR AT THE DESK AT
THE ENTRANCE IN THE
WEST GALLERY.

Half-hour lectures describing the
paintings will be given daily at
2 p.m. and 4 p.m. in the Gallery
by Mrs. Margaret MacLean.

The Applied Art Building

IN the Applied Art Building will be found a collection of Drawings, Etchings, Lithographs and Decorative Work. In addition to works by Canadian illustrators and etchers, contributed by the Society of Graphic Arts and the Canadian Society of Painter Etchers, the exhibit includes a group of twenty lithographs by British artists, lent by the National Gallery of Canada; several collections of illustrations supplied by Canadian publishers, a number of drawings depicting scenes in the great war, by Canadian artists at the front, and about 175 prints by American etchers, from the Chicago Society of Etchers. Among the exhibits of Decorative and Applied Art are the original drawings for the new bank notes of the Canadian Bank of Commerce, numerous striking poster designs, and a collection of mural decorations, textiles, batik hangings, tiles and pottery from New York.

Department of Fine Arts

United States Artists

N.A.—National Academy of Design.
A.N.A.—Associate National Academy of Design.

BENSON, FRANK W., N.A.
Salem, Mass.

- 1 THE OPEN WINDOW.

BEAL, GIFFORD R., N.A.
27 West 67th St., New York

- 2 RABBIT HUNTING.

BELLOWS, GEO., N.A.
146 E. 19th St., New York.

- 3 RIVER FRONT.
Awarded Gold Medal, Panama-Pacific Exposition.

BICKNELL, FRANK A., A.N.A.
Old Lyme, Conn.

- 4 THE OAK WOOD.

BRECKENRIDGE, HUGH H., A.N.A.
10 S. 18th St., Philadelphia, Pa.

- 5 IVORY, GOLD AND BLUE.

COOPER, COLIN CAMPBELL, N.A.
222 W. 59th St., New York.

- 6 THE PALACE GATE, UDAIPUR, INDIA.

CARLSON, JOHN F., A.N.A.
Plainfield, N.J.

- 7 MELTING SNOWS.

Canadian National Exhibition

CASER, ETTORE.
324 Michigan Ave., Chicago, Ill.

8 SUSIE AND THE STARS.

DONOHO, RUGER.
130 W. 57th St., New York.

9 A GARDEN.
Awarded Honourable Mention, Carnegie Institute.

DAVIS, CHARLES H., N.A.
Macbeth Gallery, 450 Fifth Ave., New York.

10 BY THE PASTURE WALL, SUMMER.

DAVY, RANDALL.
c/o Budworth & Son, New York City.

11 TWO SISTERS.

FOSTER, BEN, N.A.
119 E. 19th St., New York.

12 PINES 'MID THE LITCHFIELD HILLS.

FISK, GERTRUDE.
162 Newbery St., Boston, Mass.

13 ANN AND THERESA.

FRIESEKE, F. C., N.A.
Macbeth Gallery, 450 Fifth Ave., New York.

14 PEACE.

GENTH, LILLIAN, A.N.A.
62 Washington Square, New York.

15 FOREST MUSIC.

Department of Fine Arts

GROLL, ALBERT L., N.A.
222 W. 59th St., New York.
16 FLYING CLOUDS, ARIZONA.

GRUPPE, CHAS. P.
10 W. 55th St., New York.
17 IN THE CATSKILLS.

HASSAM, CHILDE, N.A.
130 W. 57th St., New York.
18 TABLE GARDEN.
(Lent by the Albright Art Gallery, Buffalo.)

HENRI, ROBERT, N.A.
10 Gramercy Park, New York.
19 SPANISH GIRL OF SEGOVIA.

HIGGINS, EUGENE.
411 E. 61st St., New York.
20 GIRL IN THE PARK.

HOPKINS, JAS. R.
Art Museum, Cincinnati, O.
21 BESIDE THE LAKE.
Awarded Gold Medal, Panama-Pacific Exposition.

HOFFMAN, HARRY L.
50 W. 67th St., New York.
22 ANOTHER YEAR.

JOHANSEN, JOHN C., N.A.
12 W. 9th St., New York.
23 PORTRAIT GROUP (MY FAMILY).
24 APPROACHING STORM.

Canadian National Exhibition

- KING, PAUL.
10 S. 9th St., Philadelphia, Pa.
25 BOATS.
- LIE, JONAS, A.N.A.
146 W. 55th St., New York.
26 AT THE DOCKS.
27 WITH OUR ARMIES AT HOME.
- LEVER, HAYLEY.
253 W. 42nd St., New York.
28 WINDY DAY, ST. IVES, CORNWALL, ENGLAND.
29 SMEATON'S COVE, ST. IVES, CORNWALL, ENGLAND.
- LUKS, GEORGE.
Jumel Pl. and Edgecomb Ave., New York.
30 WOMAN AND MACAWS.
31 NEW YEAR'S SHOOTER NO. 1.
- LAWSON, ERNEST, N.A.
2 W. 47th St., New York.
32 LANDSCAPE.
- MacEWEN, WALTER.
Century Club, New York.
33 THE OLD GUARD OF THE HOUSE OF ORANGE.
- MACRUM, GEORGE H.
121 E. 23rd St., New York.
34 A CORNISH HAVEN.
- McLANE, M. JEAN, A.N.A.
12 W. 9th St., New York.
35 PORTRAIT GROUP.
- MILLER, RICHARD E., N.A.
Macbeth Gallery, 450 Fifth Ave., New York.
36 AT THE WINDOW.

Department of Fine Arts

MORA, F. LUIS, N.A.
148 E. 10th St., New York.

37 THE FORTUNE TELLER.

OLINSKY, IVAN G., A.N.A.
27 W. 67th St., New York.

38 MAYTIME.

PAXTON, WM. M.
Riverside Studios, Boston, Mass.

39 THE EMBROIDERED JACKET.

PAGE, MARIE DANFORTH.
162 Newbury St., Boston, Mass.

40 CHARLOTTE.

Awarded the Julia A. Shaw Memorial Prize.
National Academy of Design, New York.

REDFIELD, E. W.
5807 Wellesley Ave., Pittsburgh, Pa.

41 WINTER WOODLANDS.

RITSCHER, WM., N.A.
58 W. 57th St., New York.

42 BLUE DEPTHS (CALIFORNIA).

REIFFEL, CHARLES.
Silvermine, Norfolk Co., Conn.

43 THE SQUATTER'S FARM.

ROSEN, CHARLES, N.A.
New Hope, Bucks Co., Pa.

44 SEPTEMBER DAY.

Canadian National Exhibition

ROBINSON, WM. S., N.A.
202 W. 74th St., New York.

45 MIDSUMMER.

RYDER, CHAUNCEY, A.N.A.
Macbeth Gallery, 450 Fifth Ave., New York.

46 FALLS AT ANTRIM.

SYMONS, GARDNER, N.A.
119 E. 19th St., New York.

47 CLINGING SNOWS.

SNELL, HENRY B., N.A.
253 W. 42nd St., New York.

48 PIGEON COVE.

SCHOFIELD, W. ELMER, CAPT.
On Active Service.

49 SPRING'S APPROACH.
(Lent by the Albright Art Gallery, Buffalo.)

SEYFFERT, LEOPOLD, A.N.A.
Macbeth Gallery, 450 Fifth Ave., New York.

50 PORTRAIT OF FRITZ KREISLER.

Awarded Beck Gold Medal, Pennsylvania
Academy of Fine Arts.

TURNER, HELEN M., A.N.A.
207 E. 17th St., New York.

51 LEARNING TO KNIT.

VONNOH, ROBERT, N.A.
145 E. 23rd St., New York.

52 LATE FOR SCHOOL (WINTER LANDSCAPE).

Department of Fine Arts

VAN DEERING, PERRINE.
Palisades, N.J.

- 53 AUTUMN.
- 54 SPRING FANTASY.
- 55 WIND IN THE TREES.
(Lent by E. F. Ely, Esq.)

WALTER, MARTHA.
222 W. 25th St., New York.

- 56 CHILDREN OF FISHERMEN.

WILLIAMS, F. BALLARD, N.A.
27 W. 67th St., New York.

- 57 THE LAND OF CONTENTMENT.

WIGGINS, GUY C., A.N.A.
Lyme, Conn.

- 58 BROADWAY BLIZZARD.

WOODBURY, CHAS. H., N.A.
162 Newbury St., Boston, Mass.

- 59 THE BARK.

WILES, IRVING R., N.A.
130 W. 57th St., New York.

- 60 ISABEL AND HER FATHER.

Canadian National Exhibition



GEORGE BELLOWS, N.A.
River Front.

Department of Fine Arts



ETTORE CASER.
Susie and the Stage.

Canadian National Exhibition



F. C. FRIESEKE, N.A.
Peace.

Department of Fine Arts



ROBERT HENRI, N.A.
Spanish Girl of Segovia.

Canadian National Exhibition



JOHN C. JOHANSEN, N.A.
Portrait Group (My Family).

Department of Fine Arts



HAYLEY LEVER.
Windy Day, St. Ives, Cornwall, England.

Canadian National Exhibition



JONAS LIE, A.N.A.
With Our Armies At Home.

Department of Fine Arts



GEORGE LUKS.
New Year's Shooter No. 1.

Canadian National Exhibition



WALTER MAC EWEN.
The Old Guard of the House of Orange.

Department of Fine Arts



M. JEAN McLANE, A.N.A.
Portrait Group.

Canadian National Exhibition



F. LUIS MORA, N.A.
The Fortune Teller.

Department of Fine Arts



IVAN G. OLINSKY, A.N.A.
Maytime.

Canadian National Exhibition



MARIE DANFORTH PAGE.
Charlotte.

Department of Fine Arts



E. W. REDFIELD.
Winter Woodlands.

Canadian National Exhibition



WILLIAM RITSCHER, N.A.
Blue Depths (California).

Department of Fine Arts



GARDNER SYMONS, N.A.
Clinging Snows.

Canadian National Exhibition



HELEN M. TURNER, A.N.A.
Learning to Knit.

Department of Fine Arts



F. BALLARD WILLIAMS, N.A.
The Land of Contentment.

Canadian National Exhibition



CHARLES H. WOODBURY, N.A.
The Bark.

Department of Fine Arts

Foreign Artists

ANDRE, ALBERT. (French.)

61 STILL LIFE.

(Lent by the National Gallery, Ottawa.)

BEFANI, GENNARO. (Italian.)

62 ST. GUENOLE, BRITTANY.

BROBOWSKY, GRIGORI. (Russian.)

63 PORTRAIT OF A WOMAN.

CHICHARRO, EDUARDO. (Spanish.)

64 CAMPESINOS DE CASTILLA.

CHIMONA, NICHOLAS. (Russian.)

65 HELLAS.

66 THE ISLE OF PRINCE.

LOISEAU, GUSTAVE.

67 LES RIVES DE L'EUROPE.

(Lent by the National Gallery, Ottawa.)

MAKOWSKY, ALEXANDER. (Russian.)

68 PROFILE.

MAUFRA, MAXIME.

69 LA POINTE DE L'HEBELLU.

(Lent by the National Gallery, Ottawa.)

MORET, HENRI.

70 PECHEURS DE COUARS, FINISTERRE.

(Lent by the National Gallery, Ottawa.)

ZAROUBINE, VICTOR. (Russian.)

71 LES MAGES.

Canadian National Exhibition

Canadian Artists

R.C.A.—Royal Canadian Academy of Arts.
A.R.C.A.—Associate Royal Canadian Academy of Arts.

ADAMS, L. O.

10 Elmscourt Apts., 27 Irwin Ave., Toronto.

72 AN ONTARIO VALLEY.

ATKINSON, W. EDWIN.

Baby Point Road, West Toronto.

73 THE HILLCRESTS.

74 GOOSE ISLAND.

BELL-SMITH, F. M., R.C.A.

336 Jarvis Street, Toronto.

75 BRITAIN'S BULWARKS.

76 COMING STORM IN THE ROCKIES.

BEATTY, CAPT. J. W., R.C.A.

On Active Service.

77 IN ALGONQUIN PARK.

BRADY, CYRIL P.

Palmerston Blvd., Toronto.

78 PORTRAIT OF MRS. GYBBON LE TOUZEL.

79. MAN WITH RED SCARF.

BRYMNER, WM., C.M.G., P.R.C.A.

255 Bleury St., Montreal.

80 PORTRAIT OF THE LATE K. R. MACPHERSON, Esq., K.C.

BROWNE, ARCHIBALD, A.R.C.A.

54 Adelaide St. E., Toronto.

81 THE CHURCH ON THE HILL.

82 THE TRYSTING PLACE.

Department of Fine Arts

BRITTON, HENRIETTA.
67 Wellesley St., Toronto.

83 THE LIFE CLASS.

BRITTON, HARRY, A.R.C.A.
67 Wellesley St., Toronto.

84 PORTRAIT, MISS DREW-BROOK.

85 WINTER.

86 THE REUNION.

BROCK, GUY N.
4282 Sherbrooke St., Westmount, Que.

87 THE TOW BOAT.

BARNES, WILFRED M.
747 St. Catherine St. W., Montreal.

88 THE WOODLAND POOL.

CRISP, ARTHUR.
1947 Broadway, New York City.

89 THE ABDUCTION OF COLUMBINE (DECORATION).

89. FRESH FROM THE GARDEN.

91. A LADY OF SPAIN.

CHAVIGNAUD, GEO.
Kleinburg, Ont.

92 DREAMLAND.

93 RIVER LANDSCAPE.

COTE, A. SUZOR, R.C.A.
26A Victoria St., Montreal.

94 LE VIEUX POMMIER.

95 VIEILLE CABANE A SUCRE.

96 ETUDE DE TYPE CANADIEN.

Canadian National Exhibition

CULLEN, MAURICE, R.C.A.
On Active Service.

- 97 BLUE VETCH.
- 98 HABITANT FARM.

CARMICHAEL, FRANK.
Thornhill P.O., Ont.

- 99 EARLY AUTUMN.
- 100 A STUDY.

CARLYLE, FLORENCE, A.R.C.A.
"Sweethaws," Croboro', Sussex, England.

- 101 THE YELLOW ROSE.
- 102 ROSES AND BRASS.

COBURN, F. S.
Upper Melbourne, Que.

- 103 THE RIVER ROAD.
- 104 STILL LIFE.

CLELAND, M. ALBERTA.
15 Souvenir Ave., Montreal.

- 105 PORTRAIT OF A BOY.

CHALLENGER, FREDERICK S., R.C.A.
2 Bloor St. W., Toronto.

- 106 RETURNING TROOPSHIPS, NEARING QUEBEC.
- 107 WITH WIND AND TIDE.

DE BELLE, CHAS.
1129 Boulevard Decarie, Montreal.

- 108 MADONNA.

Department of Fine Arts

DES CLAYES, GERTRUDE, A.R.C.A.
360 Beaver Hall Square, Montreal.

109 MRS. FISK (PORTRAIT.)

110 "BOBBIE," SON OF J. C. HANNA, ESQ., MONTREAL.

DES CLAYES, ALICE.
360 Beaver Hall Square, Montreal.

111 CARTING DRIFTWOOD NEAR BALSAM LAKE, ONT.

DES CLAYES, BERTHE.
360 Beaver Hall Square, Montreal.

112 KENNEBUNK BEACH.

DAVIDSON, HELEN L.
"Brookwood," Humber Bay.

113 PORTRAIT SKETCH.

DRAKE, WILLIAM A.
37 Carlton St., Toronto.

114 A SHALLOW STREAM, WINTER.

FORSTER, J. W. L.
24 King St. W., Toronto.

115 L. GOLDMAN, ESQ., PRESIDENT OF THE NORTH AMERICAN
LIFE ASSURANCE COMPANY.

FRANCHERE, J. C., A.R.C.A.
60 St. Denis St., Montreal.

116 GOLDEN YOUTH.

FLEMING, A. M.
69½ King St., Chatham, Ont.

117 THE MELTING SNOW.

Canadian National Exhibition

GREENE, T. G.

70 Lombard St., Toronto.

118 MAPLE SAP.

GAGNON, CLARENCE A., A.R.C.A.

c/o Johnson's Gallery, Montreal.

119 LATE EVENING SUN, VENICE.

120 EARLY MORNING IN THE LAURENTIANS.

121 THE TRAIN, WINTER.

GEDDES, FRANCES M.

62 Laing St., Toronto.

122 DOLCE FAR NIENTE.

GAGEN, ROBERT F., R.C.A.

707 Yonge St., Toronto.

123 ANCHORED FOR THE NIGHT.

124 IN THE HAVEN.

125 THE SEVENTH WAVE.

GRIER, E. WYLY, R.C.A.

Imperial Bank Chambers, Toronto.

126 THE LATE FLIGHT-LIEUT. FORD STRATHY, R.A.F.

127 MAJ.-GEN. S. C. MEWBURN, MINISTER OF MILITIA.

128 E. HAY, ESQ.

GILVERSON, QUEENIE V.

Dominion Bank Chambers, corner Bloor and Sher-
bourne Sts., Toronto.

129 WINTER SCENE.

130 FAIRY TALES.

Department of Fine Arts

HAINES, FRED S.

Thornhill, Ont.

131 FLY TIME.

132 BETWEEN LIGHTS.

133 THE PRIDE OF THE FARM.

HARRIS, R., C.M.G., R.C.A.

11 Durocher St., Montreal.

134 IN OLD MADRID.

HEBERT, ADRIEN.

309 Elm Ave., Westmount, Que.

135 LA TERRE.

136 DANS UN PARC.

HOLMES, R., A.R.C.A.

24 Isabella St., Toronto.

137 PINK LADY'S SLIPPER

JOHNSTON, FRANCIS H.

96 Keewatin Ave., Toronto.

138 FOREST FANTASY (TEMPERA).

JONES, HUGH E.

10 Oldfield Ave., Montreal.

139 THE RIVER.

KNOWLES, ELIZABETH A. McG., A.R.C.A.

c/o Roberts' Art Gallery, 729 Yonge St., Toronto.

140 THE SENTINEL.

141 SWEETHEARTS.

KNOWLES, F. MCGILLIVRAY, R.C.A.

c/o Roberts' Art Gallery, 729 Yorge St., Toronto.

142 A SHIMMERING AFTERNOON.

143 IN FRENCH CANADA.

Canadian National Exhibition

KERR, ESTELLE M.

80 Spadina Road, Toronto.

144 THE VIGIL.

KILGOUR, A. WILKIE.

176 Fairmount Ave., Montreal.

145 JEUNE FILLE PENSIVE.

KEENE, CALEB.

Corner Yonge and Bloor Sts.

146 OLD SUN DIAL AND GATEWAY, CAPE TOWN CASTLE.

147 TABLE MOUNTAIN FROM GORDON'S BAY, CAPE TOWN.

KALLMEYER, MINNIE.

94 South Drive, Toronto.

148 OCTOBER.

LONG, MARION.

Studio Building, Severn St., Toronto.

149 WOMAN IN BLACK.

150 JAPANESE PARASOL.

LYALL, LAURA A., A.R.C.A.

24 Bernard Ave., Toronto.

151 IRIS.

152 REBECKAH.

LISMER, ARTHUR.

Bedford, N.S.

153 THE HARBOR, HALIFAX, N.S.

LAPINE, A. C. G.

160 Richmond St. W., Toronto.

154 WAGGON SHED.

155 LA NONI.

Department of Fine Arts

MACDONALD, MANLY.

Point Anne, Ont.

156 IN THE SHADE.

157 HAYING.

MICKLE, ALFRED E., A.R.C.A.

Confederation Life Building, Toronto.

158 WHITE FLOWERS, WHITE CLIFF, ENGLAND.

MACDONALD, J. E. H., A.R.C.A.

Studio Building, 25 Severn St., Toronto.

159 OCTOBER, LAURENTIANS.

160 THE ELM—MOONLIGHT.

161 A SANDY BEACH—LAKE ONTARIO.

McGILLIVRAY, F. H.

292 Frank St., Ottawa.

162 CORNER OF THE GROVE, WHITBY, ONT.

163 CANAL, VENICE.

164 MIDWINTER, DUNBARTON, ONT.

MAY, H. MABEL, A.R.C.A.

434 Elm Ave., Westmount.

165 SUNNY AFTERNOON.

166 GOING TO THE STATION.

167 THE FERRY.

MITCHELL, THOMAS W.

44 Stibbard Ave., Toronto.

168 THE KILN.

169 LIMESTONE.

MATTICE, HORTENSE CROMPTON.

Studio, 83 King St., Chatham, Ont.

170 SUNSET GLOW.

Canadian National Exhibition

MANLY, C. M., A.R.C.A.

34 North St., Toronto.

171 CAPE COVE, BAY DES CHALEURS.

172 TOP OF THE STACK.

PALMER, HERBERT S., A.R.C.A.

2 Bloor St. W., Toronto.

173 AN ONTARIO PASTURE.

174 A RAINY DAY IN THE BUSH.

PHILLIPS, W. J.

32 Bannerman Ave., Winnipeg.

175 THE WINTER AMBULATORY.

176 GULL HARBOUR, LAKE WINNIPEG.

177 RED RIVER.

REID, LORNA FYFE.

30 South Drive, Toronto.

178 BEADS FROM FRANCE.

ROSAIRE, ARTHUR D., A.R.C.A.

296 Mountain St., Montreal.

179 FIRST WORK AT HYDRO PLANT, HEALEY'S FALLS.

180 CONVENT YARD, MONTREAL.

181 THE TOILERS.

RUSSELL, G. HORNE, R.C.A.

360 Beaver Hall Square, Montreal.

182 EVENING, ST. ANDREW'S, N.B.

183 FOGGY WEATHER, EASTPORT, ME.

REID, G. A., R.C.A.

Wychwood Park, Toronto.

184 AVE CANADA. STUDY FOR MURAL DECORATION.

185 EARLY MORNING, CANTERBURY, ENGLAND.

Department of Fine Arts

REID, MARY H., A.R.C.A.

26 Wychwood Park, Toronto.

186 PAST AND PRESENT.

187 BIRCH IN AUTUMN.

RUSSELL, JOHN.

28 College St., Toronto.

188 PORTRAIT, MAJOR T. CRAWFORD BROWN.

189 PORTRAIT, REV. ALBERT EUGENE RIBOURG, D.D.

190 A LIFE OF DEVOTION TO HOSPITAL AND RED CROSS WORK.

191 A FANTASY OF CHILDHOOD.

192 LA PLAGE—BERNEVAL.

SIMPSON, CAPT. CHARLES W., A.R.C.A.

On Active Service.

193 THE CITADEL, QUEBEC.

194 THE TOW PATH.

STAPLES, OWEN.

69 Hogarth Ave., Toronto.

195 MAPLE LEAVES.

STEVENS, DOROTHY.

2 Spadina Gardens, Toronto.

196 PORTRAIT, MISS A. CASSIDY.

TAYLOR, (MISS) KATE LIVINGSTONE.

9 Salina St., St. Catharines, Ont.

197 PORTRAITS ON IVORY.

THOMSON, GEO.

194 Winthrop Ave., New Haven, Conn.

198 THE FLATS IN EARLY WINTER.

199 LANDSCAPE, OCTOBER.

Canadian National Exhibition

TOPHAM, THURSTAN.

The Arts Club, 51 Victoria St., Montreal.

200 THE CRUCIFIX ON THE FRICOURT-CONTALMAISON ROAD.

WRINCH, MARY E., A.R.C.A.

30 Wychwood Park, Toronto.

201 THE SHORES OF THE ST. LAWRENCE.

202 CANADA GEESE IN A MAPLE SUGAR PLANTATION.

WATSON, HOMER, P.R.C.A.

Doon, Ont.

203 DRY SEASON, GRAND RIVER.

204 THE BROKEN TREE.

205 MARCH TWILIGHT.

Sculpture

BROWN, E. LOUISE.

1662 Queen St. W., Toronto.

206 PORTRAIT—BUST OF GIRL.

FOSTER, MERLE A.

25 Duggan Ave., Toronto.

207 MARSHAL FERDINAND FOCH—PLASTER MODEL.

LAUR, E. L.

707 Yonge St., Toronto.

208 PORTRAIT—BUST.

LORING, FRANCES.

114½ Church St., Toronto.

209 LE REVEIL.

210 MODEL FOR DECORATIVE P^l EL.

211 PORTRAIT—BAS-RELIEF—I M.

SCOBIE, MARGARET. (MRS. HAYES.)

600 Sherbourne St., Toronto.

212 STATUETTE—GIRL WITH LAMP.

213 RELIEF—POT.

WYLE, FLORENCE.

114½ Church St., Toronto.

214 INDIAN BOY—BAS-RELIEF.

215 PORTRAIT OF BABY—BAS-RELIEF.

216 PORTRAIT—BAS-RELIEF.

Canadian National Exhibition



WILLIAM BRYMNER, C.M.G., R.C.A.
The Late K. R. Macpherson, Esq., K.C.

Department of Fine Arts



CHARLES DE BELLE.
Madonna.

Canadian National Exhibition



F. M. BELL-SMITH, R.C.A.
Britain's Bulwarks.

Department of Fine Arts



GERTRUDE DES CLAYES, A.R.C.A.
Portrait of Mrs. H. J. Fisk.

Canadian National Exhibition



FREDERICK S. CHALLENGER, R.C.A.
With Wind and Tide.

Canadian National Exhibition



THOMAS G. GREENE.
Maple Sap.

Canadian National Exhibition



ROBERT F. GAGEN, R.C.A.
Anchored for the Night.

Department of Fine Arts



CLARENCE A. GAGNON, A.R.C.A.
Late Evening Sun, Venice.

Canadian National Exhibition



FRED S. HAINES.
Fly Time.

Department of Fine Arts



F MCGILLIVRAY KNOWLES, R.C.A.
A Shimmering Afternoon.

Canadian National Exhibition



ARTHUR LISMER.
The Harbor, Halifax, Time of War.

Department of Fine Arts



LAURA A. LYALL, A.R.C.A.
Iris.

Canadian National Exhibition



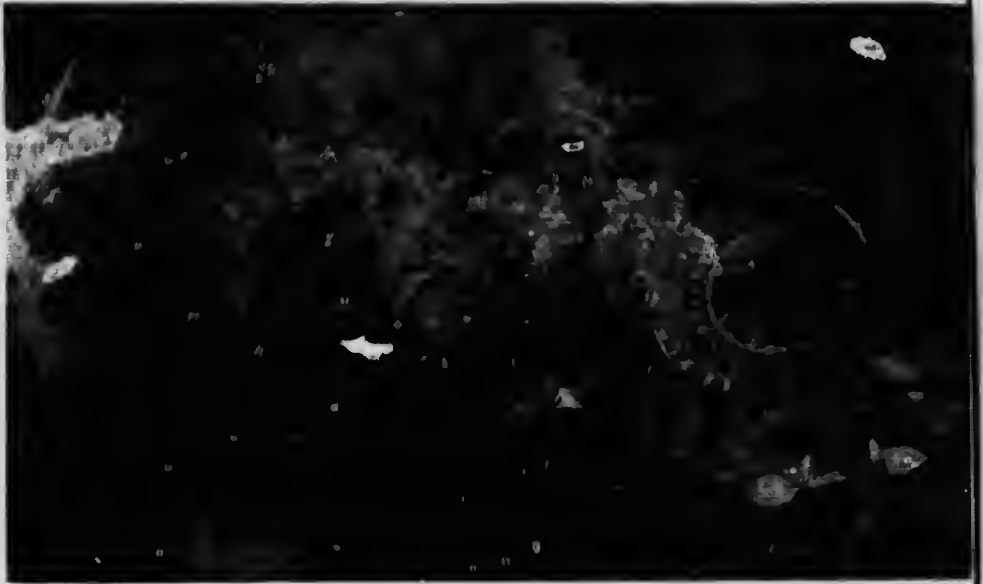
HERBERT S. PALMER, A.R.C.A.
An Ontario Pasture.

Department of Fine Arts



GEORGE A. REID, R.C.A.
Afternoon, Wychwood Pond.

Canadian National Exhibition



MARY H. REID, A.R.C.A.
Past and Present (Still Life).



JOHN RUSSELL.
A Fantasy of Childhood.

Canadian National Exhibition



A. SUZOR-COTE, R.C.A.
Le Vieux Pommier.

Department of Fine Arts



HOMER WATSON, P.R.C.A.
Dry Season, Grand River.

Bibliothèque des Arts

X 12 516 449

Canadian National Exhibition



MARY E. WRINCH, A.R.C.A.
The Shores of the St. Lawrence.

