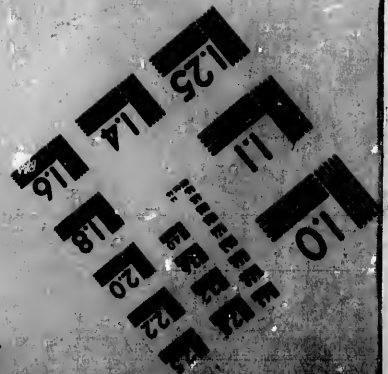
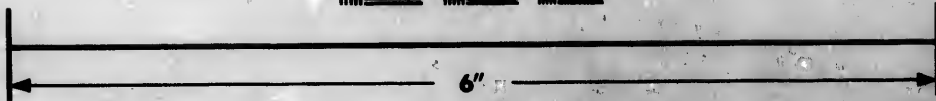
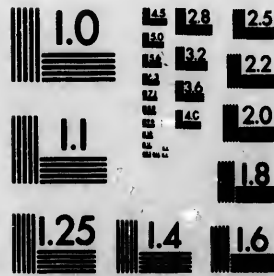


**IMAGE EVALUATION
TEST TARGET (MT-3)**



**Photographic
Sciences
Corporation**

23 WEST MAIN STREET
WEBSTER, N.Y. 14580
(716) 872-4803

**CIHM/ICMH
Microfiche
Series.**

**CIHM/ICMH
Collection de
microfiches.**



Canadian Institute for Historical Microreproductions / Institut canadien de microreproductions historiques

© 1983

Technical and Bibliographic Notes/Notes techniques et bibliographiques

The Institute has attempted to obtain the best original copy available for filming. Features of this copy which may be bibliographically unique, which may alter any of the images in the reproduction, or which may significantly change the usual method of filming, are checked below.

L'institut a microfilmé le meilleur exemplaire qu'il lui a été possible de se procurer. Les détails de cet exemplaire qui sont peut-être uniques du point de vue bibliographique, qui peuvent modifier une image reproduite, ou qui peuvent exiger une modification dans la méthode normale de filmage sont indiqués ci-dessous.

- Coloured covers/
Couverture de couleur
- Covers damaged/
Couverture endommagée
- Covers restored and/or laminated/
Couverture restaurée et/ou pelliculée
- Cover title missing/
Le titre de couverture manque
- Coloured maps/
Cartes géographiques en couleur
- Coloured ink (i.e. other than blue or black)/
Encre de couleur (i.e. autre que bleue ou noire)
- Coloured plates and/or illustrations/
Planches et/ou illustrations en couleur
- Bound with other material/
Relié avec d'autres documents
- Tight binding may cause shadows or distortion
along interior margin/
Le reliure serrée peut causer de l'ombre ou de la
distorsion le long de la marge intérieure
- Blank leaves added during restoration may
appear within the text. Whenever possible, these
have been omitted from filming/
Il se peut que certaines pages blanches ajoutées
lors d'une restauration apparaissent dans le texte,
mais, lorsque cela était possible, ces pages n'ont
pas été filmées.
- Additional comments:
Commentaires supplémentaires:

- Coloured pages/
Pages de couleur
- Pages damaged/
Pages endommagées
- Pages restored and/or laminated/
Pages restaurées et/ou pelliculées
- Pages discoloured, stained or foxed/
Pages décolorées, tachetées ou piquées
- Pages detached/
Pages détachées
- Showthrough/
Transparence
- Quality of print varies/
Qualité inégale de l'impression
- Includes supplementary material/
Comprend du matériel supplémentaire
- Only edition available/
Seule édition disponible
- Pages wholly or partially obscured by errata
slips, tissues, etc., have been refilmed to
ensure the best possible image/
Les pages totalement ou partiellement
obscurcies par un feuillet d'errata, une pelure,
etc., ont été filmées à nouveau de façon à
obtenir la meilleure image possible.

This item is filmed at the reduction ratio checked below/
Ce document est filmé au taux de réduction indiqué ci-dessous.

10X	12X	14X	16X	18X	20X	22X	24X	26X	28X	30X	32X
						X					

The copy filmed here has been reproduced thanks to the generosity of:

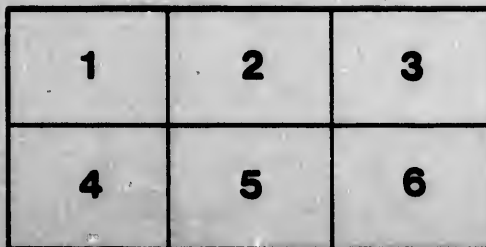
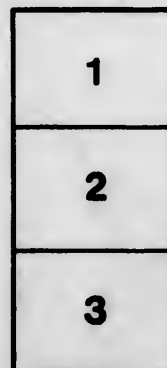
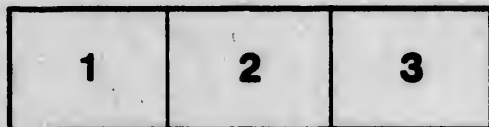
University of Alberta
Edmonton

The images appearing here are the best quality possible considering the condition and legibility of the original copy and in keeping with the filming contract specifications.

Original copies in printed paper covers are filmed beginning with the front cover and ending on the last page with a printed or illustrated impression, or the back cover when appropriate. All other original copies are filmed beginning on the first page with a printed or illustrated impression, and ending on the last page with a printed or illustrated impression.

The last recorded frame on each microfiche shall contain the symbol \rightarrow (meaning "CONTINUED"), or the symbol ∇ (meaning "END"), whichever applies.

Maps, plates, charts, etc., may be filmed at different reduction ratios. Those too large to be entirely included in one exposure are filmed beginning in the upper left hand corner, left to right and top to bottom, as many frames as required. The following diagrams illustrate the method:



L'exemplaire filmé fut reproduit grâce à la générosité de:

University of Alberta
Edmonton

Les images suivantes ont été reproduites avec le plus grand soin, compte tenu de la condition et de la netteté de l'exemplaire filmé, et en conformité avec les conditions du contrat de filmage.

Les exemplaires originaux dont la couverture en papier est imprimée sont filmés en commençant par le premier plat et en terminant soit par la dernière page qui comporte une empreinte d'impression ou d'illustration, soit par le second plat, selon le cas. Tous les autres exemplaires originaux sont filmés en commençant par la première page qui comporte une empreinte d'impression ou d'illustration et en terminant par la dernière page qui comporte une telle empreinte.

Un des symboles suivants apparaîtra sur la dernière image de chaque microfiche, selon le cas: le symbole \rightarrow signifie "A SUIVRE", le symbole ∇ signifie "FIN".

Les cartes, planches, tableaux, etc., peuvent être filmés à des taux de réduction différents. Lorsque le document est trop grand pour être reproduit en un seul cliché, il est filmé à partir de l'angle supérieur gauche, de gauche à droite, et de haut en bas, en prenant le nombre d'images nécessaire. Les diagrammes suivants illustrent la méthode.

R

N

Reprinted from the MONTHLY NOTICES OF THE ROYAL ASTRONOMICAL SOCIETY,
Vol. LV. No. 1.

NOTE ON MR. STONE'S THEORY OF THE MEASURE
OF TIME.

BY

PROFESSOR SIMON NEWCOMB.

n
S
th

p
I
an
H
O
ob
th

ap
wh
ta
a
ta
su
th
un
Th
sec
Ca
No
Ca
Le
the
fro
ma

Note on Mr. Stone's Theory of the Measure of Time.

By Professor Simon Newcomb.

The discussion with Mr. Stone has now reached a stage where nothing remains to be done on my part except to invite Mr. Stone's attention to the conclusions from his theory, as he states them in the May number of the *Monthly Notices*.

A copy of Le Verrier's *Tables du Soleil* has been in my possession since the year 1859. If, with the tables in this book, I compute the sidereal time of mean moon on 1892, January 6, and thence the tabular right ascension of the Moon from Hansen's tables at the moment of its transit over the meridian of Oxford, on that date, I find a difference between the tabular and observed right ascension of $1^{\circ}36'$. The result will be substantially the same if I use the older tables of Carlini.

Mr. Stone maintains that this result is due to my failure to apply a certain correction to the numbers of Le Verrier's tables, which correction is not a function of anything contained in the tables, or of the epoch of any natural event, but of the date when a certain office, three thousand miles away, began to use the tables in computing the solar ephemeris. In his last note on the subject he gives precision to this conclusion by stating explicitly that if the office in question had not begun the use of the tables until 1892, the result would have been $0^{\circ}10'$, instead of $1^{\circ}36'$. The statement is still further strengthened by his answer to my second question, that $0^{\circ}10'$ would also have been the result if Carlini's tables had been continued to the present time in the *Nautical Almanac Office*, though, if I make the computation with Carlini's tables now, I shall get nearly $1^{\circ}36'$, the same as with Le Verrier's tables. It thus seems, according to Mr. Stone's theory, that the results which I now get from tables are different from what they would have been had a change of tables not been made in the *Nautical Almanac Office*.

