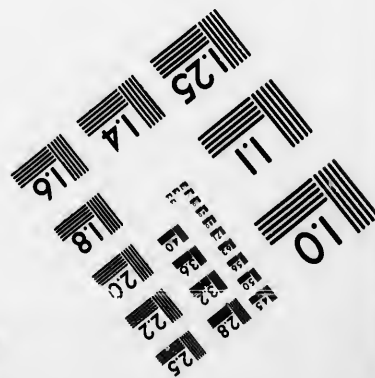
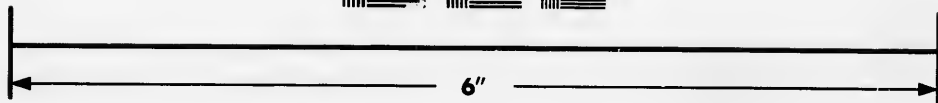
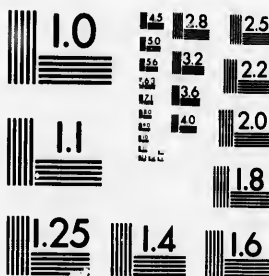


**IMAGE EVALUATION
TEST TARGET (MT-3)**



**Photographic
Sciences
Corporation**

23 WEST MAIN STREET
WEBSTER, N.Y. 14580
(716) 872-4503

Ca

**CIHM
Microfiche
Series
(Monographs)**

**ICMH
Collection de
microfiches
(monographies)**



Canadian Institute for Historical Microreproductions / Institut canadien de microreproductions historiques

© 1993

Technical and Bibliographic Notes / Notes techniques et bibliographiques

The Institute has attempted to obtain the best original copy available for filming. Features of this copy which may be bibliographically unique, which may alter any of the images in the reproduction, or which may significantly change the usual method of filming, are checked below.

L'Institut a microfilmé le meilleur exemplaire qu'il lui a été possible de se procurer. Les détails de cet exemplaire qui sont peut-être uniques du point de vue bibliographique, qui peuvent modifier une image reproduite, ou qui peuvent exiger une modification dans la méthode normale de filmage sont indiqués ci-dessous.

- Coloured covers/
Couverture de couleur
- Covers damaged/
Couverture endommagée
- Covers restored and/or laminated/
Couverture restaurée et/ou pelliculée
- Cover title missing/
Le titre de couverture manque
- Coloured maps/
Cartes géographiques en couleur
- Coloured ink (i.e. other than blue or black)/
Encre de couleur (i.e. autre que bleue ou noire)
- Coloured plates and/or illustrations/
Planches et/ou illustrations en couleur
- Bound with other material/
Relié avec d'autres documents
- Tight binding may cause shadows or distortion along interior margin/
La reliure serrée peut causer de l'ombre ou de la distorsion le long de la marge intérieure
- Blank leaves added during restoration may appear within the text. Whenever possible, these have been omitted from filming/
Il se peut que certaines pages blanches ajoutées lors d'une restauration apparaissent dans le texte, mais, lorsque cela était possible, ces pages n'ont pas été filmées.

- Coloured pages/
Pages de couleur
- Pages damaged/
Pages endommagées
- Pages restored and/or laminated/
Pages restaurées et/ou pelliculées
- Pages discoloured, stained or foxed/
Pages décolorées, tachetées ou piquées
- Pages detached/
Pages détachées
- Showthrough/
Transparence
- Quality of print varies/
Qualité inégale de l'impression
- Continuous pagination/
Pagination continue
- Includes index(es)/
Comprend un (des) index

Title on header taken from:
Le titre de l'en-tête provient:

- Title page of issue/
Page de titre de la livraison
- Caption of issue/
Titre de départ de la livraison
- Masthead/
Générique (périodiques) de la livraison

- Additional comments:
Commentaires supplémentaires:

This item is filmed at the reduction ratio checked below/
Ce document est filmé au taux de réduction indiqué ci-dessous.

| | | | | | | | | | | | |
|-----|-----|-----|-----|-----|-----|-----|-----|-----|-----|-----|-----|
| 10X | 12X | 14X | 16X | 18X | 20X | 22X | 24X | 26X | 28X | 30X | 32X |
| | | | | | | / | | | | | |

The c
to the

The i
possib
of the
filmin

Origin
begin
the la
sion,
other
first p
sion,
or illu

The la
shall
TINU
which

Maps
differ
entire
begin
right
requir
meth

The copy filmed here has been reproduced thanks to the generosity of:

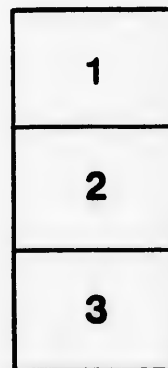
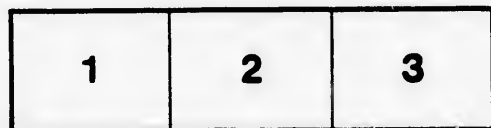
Library of the National
Archives of Canada

The images appearing here are the best quality possible considering the condition and legibility of the original copy and in keeping with the filming contract specifications.

Original copies in printed paper covers are filmed beginning with the front cover and ending on the last page with a printed or illustrated impression, or the back cover when appropriate. All other original copies are filmed beginning on the first page with a printed or illustrated impression, and ending on the last page with a printed or illustrated impression.

The last recorded frame on each microfiche shall contain the symbol \rightarrow (meaning "CONTINUED"), or the symbol ∇ (meaning "END"), whichever applies.

Maps, plates, charts, etc., may be filmed at different reduction ratios. Those too large to be entirely included in one exposure are filmed beginning in the upper left hand corner, left to right and top to bottom, as many frames as required. The following diagrams illustrate the method:



L'exemplaire filmé fut reproduit grâce à la générosité de:

La bibliothèque des Archives
nationales du Canada

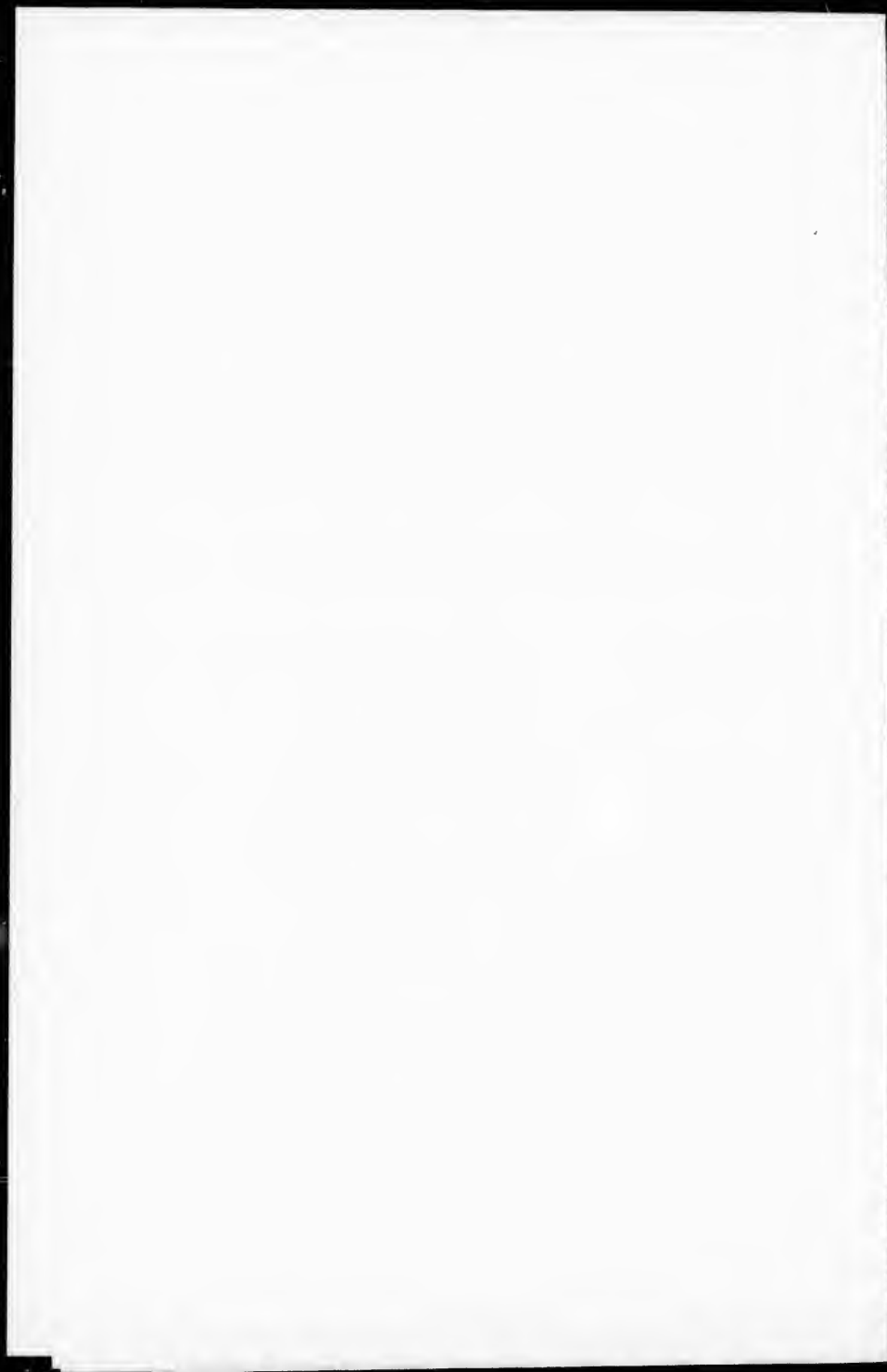
Les images suivantes ont été reproduites avec le plus grand soin, compte tenu de la condition et de la netteté de l'exemplaire filmé, et en conformité avec les conditions du contrat de filmage.

Les exemplaires originaux dont la couverture en papier est imprimée sont filmés en commençant par le premier plat et en terminant soit par la dernière page qui comporte une empreinte d'impression ou d'illustration, soit par le second plat, selon le cas. Tous les autres exemplaires originaux sont filmés en commençant par la première page qui comporte une empreinte d'impression ou d'illustration et en terminant par la dernière page qui comporte une telle empreinte.

Un des symboles suivants apparaîtra sur la dernière image de chaque microfiche, selon le cas: le symbole \rightarrow signifie "A SUIVRE", le symbole ∇ signifie "FIN".

Les cartes, planches, tableaux, etc., peuvent être filmés à des taux de réduction différents. Lorsque le document est trop grand pour être reproduit en un seul cliché, il est filmé à partir de l'angle supérieur gauche, de gauche à droite, et de haut en bas, en prenant le nombre d'images nécessaire. Les diagrammes suivants illustrent la méthode.





S
A
C

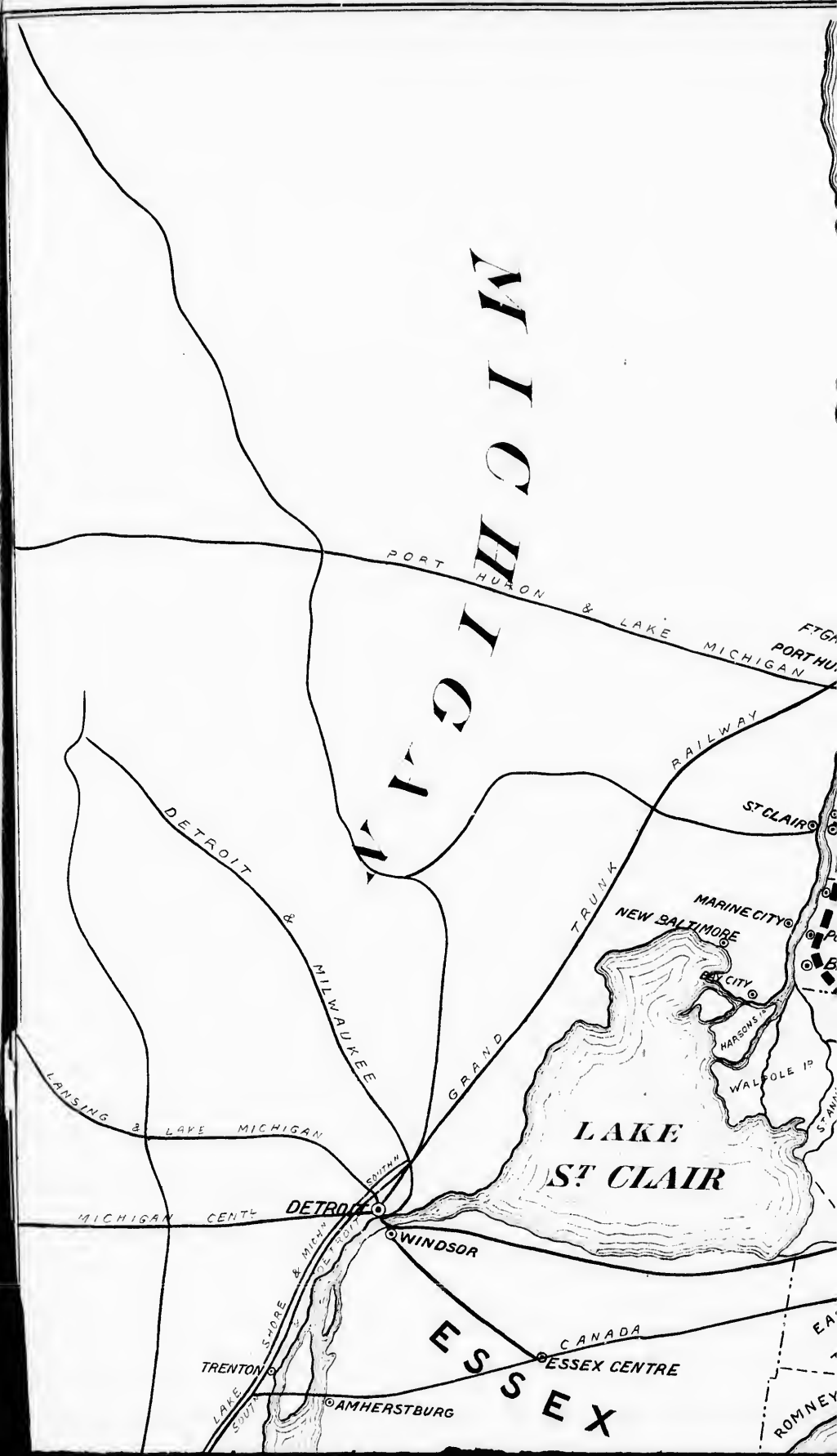
THE ERIE AND HURON RAILWAY
OF CANADA.

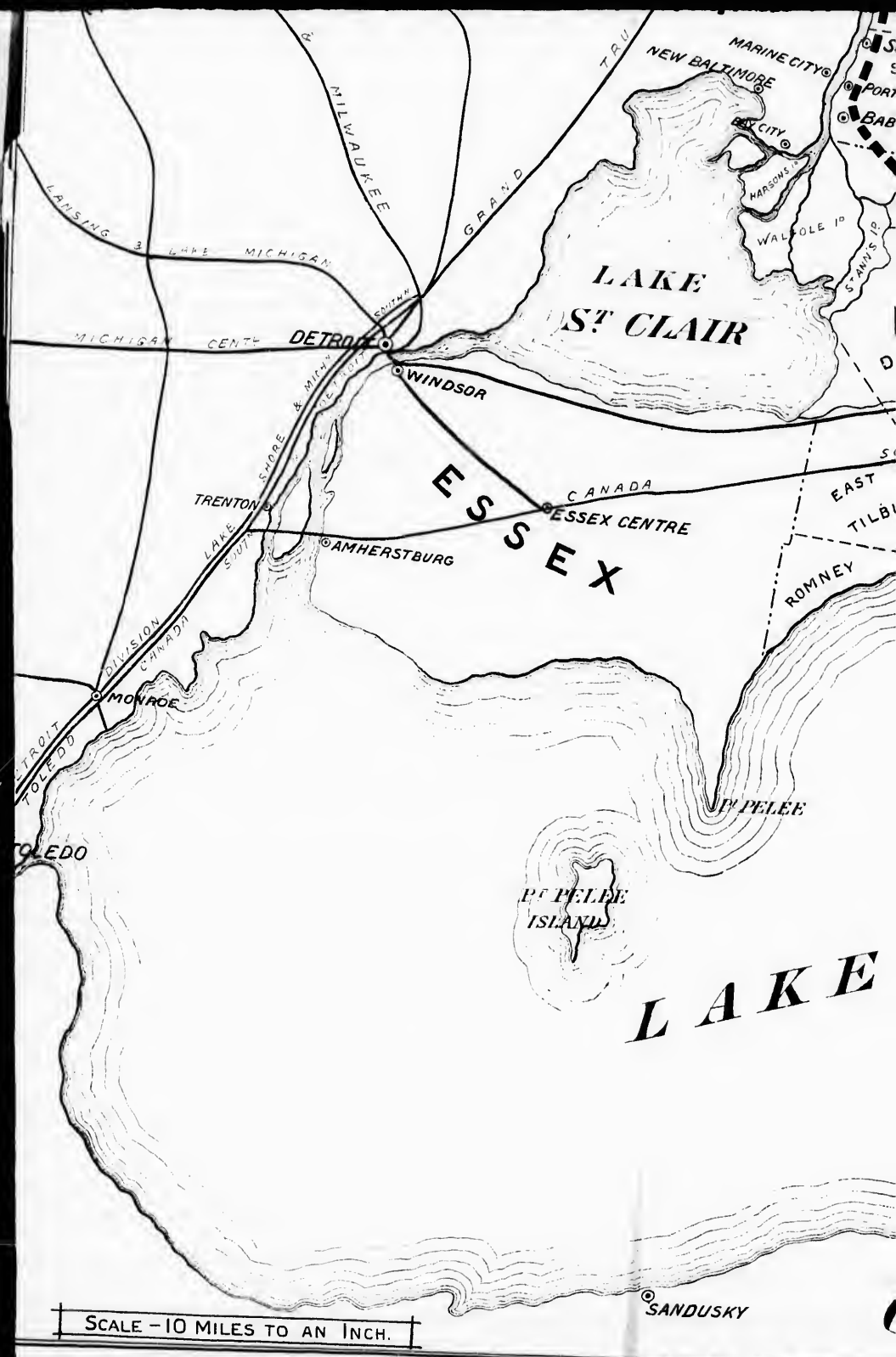
1884?

Letter from the President of the
Erie & Huron Ry. Co. to the Minister
of Ryrs & the members of the House
of Commons & Senate.

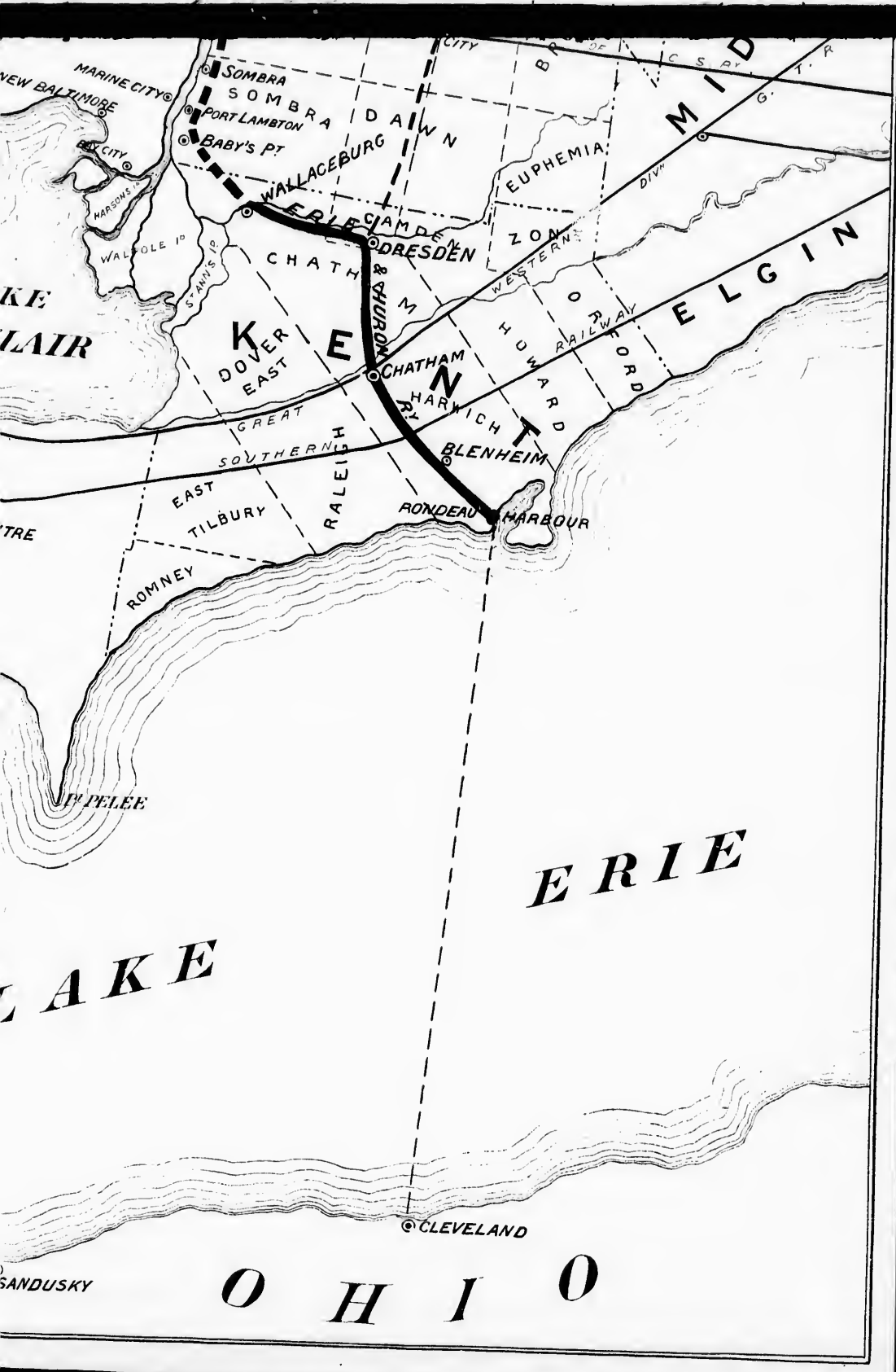
016023







SCALE - 10 MILES TO AN INCH.



NEW BALTIMORE
MARINE CITY
SANDUSKY

SOMBRA
PORT LAMBTON
BABY'S PT
WALLACEBURG
DRESDEN

MID
EUPHEMIA
ZONA
WESTERN

LAKE
WALPOLE IS.
SANDUSKY IS.

CHATHAM
DOVER
EAST
GREAT
SOUTHERN

ELGIN
HOWARD
RAILWAY
FORD

ROMNEY
TILBURY
EAST

CHATHAM
HARKNICH
BLENNHEIM
RONDEAU

ERIE

LAKE
PELEE

RALEIGH

ERIE

LAKE

RALEIGH

ERIE

SANDUSKY

RALEIGH

ERIE

SANDUSKY

RALEIGH

ERIE

CLEVELAND

O H I O

T

th
me
H
L
W
M
B
th
Se

of
La
fol
ve
ga
tor
of
tin

of

ma
W
ab

by
Co
of
of
bu
wh

To the Honourable, the Minister of Railways, and Members of the Senate and House of Commons of the Dominion of Canada:—

The Erie and Huron Railway Company beg to present a statement of their position and affairs.

In the year 1872 this Company was chartered by the Ontario Government to build a Line of Railway from the Rond Eau, a Government Harbour of Refuge on Lake Erie to the Town of Sarnia, at the foot of Lake Huron, *via* the Towns of Blenheim, Chatham, Dresden, and Wallaceburg, and the Villages of Port Lambton, Port Sombra, Cartwright, Mooretown, and Corruna, on the River St. Clair, to Port Sarnia; with a Branch from the Town of Dresden through the Township of Dawn, and the Village of Oil Springs to Oil City on the Canada Southern Railway. See map.

A Bonus of \$155,000 was voted, in aid of the scheme, by the County of Kent, and another Bonus of \$110,000 was also voted by the County of Lambton. Costly and prolonged Litigation to set aside these Bonuses followed on a suit brought by a ratepayer, and the Company was thus prevented from carrying on its scheme until the year 1878, when, having gained its case, the Directors made an agreement with a prominent contractor for the building of their Road through the County of Kent only, the Bonus of \$110,000 from the County of Lambton having expired, through lapse of time lost in Litigation.

In 1879 they were obliged to abandon the work temporarily for want of funds to carry on their contract.

In 1881 the Ontario Government passed an Act for their relief, by making the County of Kent Bonus payable when the Line was built to Wallaceburg and voting a subsidy of \$2,000 a mile to the Company, payable when finished to that point.

In 1882, further Bonuses having been voted to the extent of \$70,000 by the Towns of Blenheim, Chatham, Dresden, and Wallaceburg, the Company entered into another contract for the completion and equipment of that portion of the Line, and on the 30th September, 1883, that section of the Road from Rond Eau to Wallaceburg, a distance of $41\frac{1}{2}$ miles, was built in a first class manner with steel rails and iron bridges, together with wharves and piers at Rond Eau and Wallaceburg, and all necessary

stations, sidings, shops and other buildings, and equipped with a good and sufficient supply of Locomotives, freight, postal, and passenger coaches, and is now regularly running, carrying passengers, moving freight, and transporting the mails, in the most satisfactory manner, to the great advantage of the public at a cost of \$10,000 a mile in bonds of the Road, which together with the stock and bonuses, bring up the cost of Road, 41½ miles, and equipment, as it now stands, to a little over \$700,000.

The Company now find itself in the unpleasant position of its Bonuses and other Assets entirely exhausted, and its Road but partly built.

The Shareholders are fully impressed with the value and importance of their scheme, and the great need of completing it to Sarnia. Not only to the Municipalities along their Route, which are entirely without Railway facilities, but also to the Trade and Navigation of that portion of the Province of Ontario and to the Dominion as well, by connecting the Lakes of Erie and Huron, thus avoiding the dangers and difficulties of the Flats of St. Clair, and the constantly changing of Channel, which is now altogether in American waters.

The proposed Route runs parallel with the American Border in the State of Michigan for a considerable distance, with only the River St. Clair intervening, across which it is proposed to establish Ferries at given points, by which considerable advantages to that portion of the Province will be gained through the increased intercourse and traffic.

It is also expected that considerable advantages to the Peninsula of Western Ontario will arise by the completion to Sarnia in affording a short cut to the North-West by the Steamship Lines from that Port.

The completion to Sarnia and connection with Steamship Lines from there to the North West, would enable the Company to put on a regular Boat from the Government Harbour of Refuge, Rond Ean, to Cleveland, thus shortening the Route from Cleveland, Pittsburg, and Cincinnati, to Sarnia and the North-West by over 100 miles, and tend to bring considerable American travel and traffic through the Western Peninsula.

These advantages are now, for want of funds to go on with, in imminent danger of being lost to the Province.

It will cost over \$400,000 to complete and equip the 30 miles from Wallaceburg to Sarnia and build the necessary wharves, slips, and ferries, and a draw bridge over the Sydenham River.

The Company have not a dollar of cash or bonus, either Government or Municipal, but probably could raise \$200,000 on the Bonds of the under-mentioned if the Government and Municipalities interested, would assist with \$200,000 more.

Members of the Council of the Corporation of the Town of Sarnia have assured the Company that if the requisite aid from other sources could be had the Town would vote a Bonus of \$40,000 for the completion of the Road to that place.

The Townships of Sombra and Moore it is confidently expected would give \$15,000 each, and the Company have had some encouragement of small assistance from other sources. So if the Dominion Government will grant to this Company the same aid per mile as was given by them to the Napanee and Tamworth Road, as well as some others, the expectations of the promoters could be fulfilled to the great advantage of the western part of the Province of Ontario, and to the advantage of the Trade and Navigation of the Dominion of Canada.

By the operation of an Act of the Parliament of Canada the last Session, 46 Vic., Chapter 24, this Company came under the control of the Dominion Parliament, because its line crosses the G. W. R. Division of the Grand Trunk Railway as well as that of the Canada Southern Railway, and a short Act is now before this House for an extension of time in which to complete its Line which has become necessary.

Owing to the taking over of this Company under the control of the Dominion Parliament by the above cited Act, and away from the control of the Ontario Government, the Company appear to have lost the right to look to the Ontario Government for a continuance of their subsidy, which it had been led to expect, for the completion of the work, and have been plainly told by the latter Government that it must now look to the Dominion Government for a continuance of the aid heretofore voted and to be regarded as an unfinished work taken off their hands, which the Ontario Government were morally bound to see through, and that the Dominion Government having taken this Company off their hands should take it with all its equities.

Without discussing the logic or justice of this proposition the Company humbly beg to set forth that unless the Dominion Parliament adopt this view this Company seem likely to fall between two stools, and its scheme and undertaking be completely ruined.

The President and Directors of the Erie and Huron Railway beg that the Dominion Government and the members of the Senate and House of Commons of the Parliament of Canada will fairly consider the circumstances and do what in their judgment may appear to be just.

A. MCKELLAR,

President.

